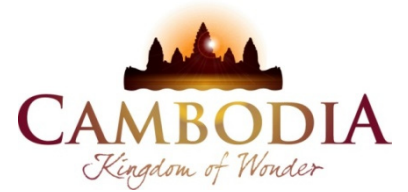




KINGDOM OF CAMBODIA
NATION RELIGION KING



TOURISM STATISTICS REPORT

April 2018

MINISTRY OF TOURISM

Statistics and Tourism Information Department

No. A3, Street 169, Sangkat Veal Vong, Khan 7 Makara, Phnom Penh, Cambodia.

Fax: +855 23 885003

E-mail: kong@tourism.gov.kh

Web site: www.tourism.gov.kh

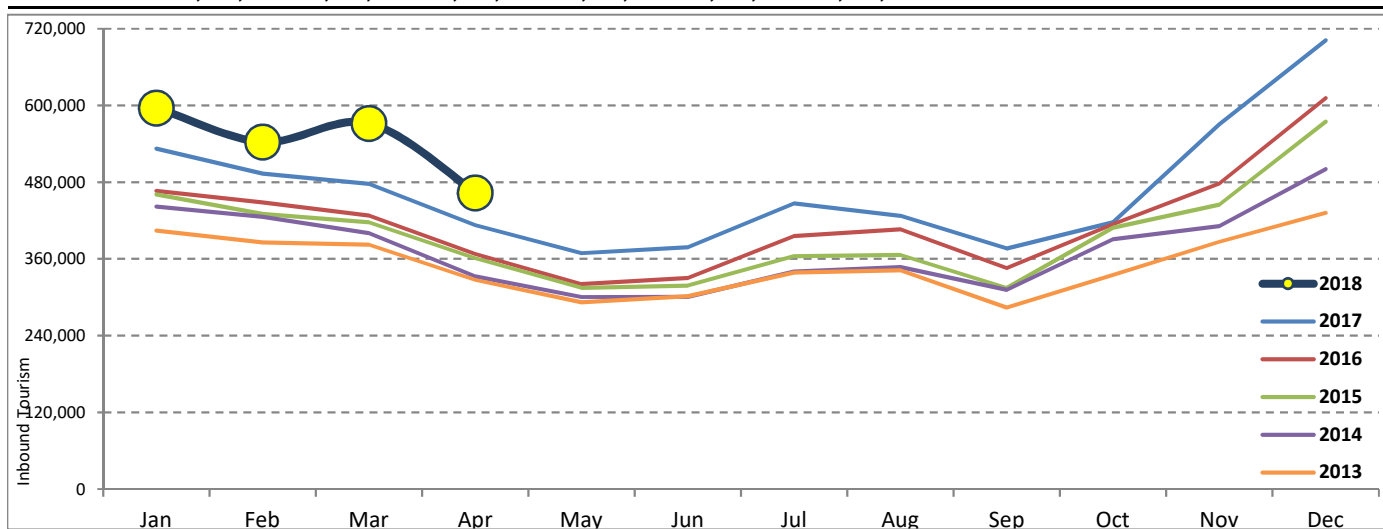
Tourism Highlights

Int'l Tourist Arrivals, Average Length of Stays, Hotel Occupancy & Int'l Tourism Receipts 1993 - 2017

Years	Int'l Tourist Arrivals		Average Length	Hotel Occupancy	Int'l Tourism Receipts
	Number	Change (%)	of Stays (Days)	(%)	(Million US\$)
1993	118,183	-	N/A	N/A	N/A
1994	176,617	49.4	N/A	N/A	N/A
1995	219,680	24.4	8.00	37.0	100
1996	260,489	18.6	7.50	40.0	118
1997	218,843	-16.0	6.40	30.0	103
1998	286,524	30.9	5.20	40.0	166
1999	367,743	28.3	5.50	44.0	190
2000	466,365	26.8	5.50	45.0	228
2001	604,919	29.7	5.50	48.0	304
2002	786,524	30.0	5.80	50.0	379
2003	701,014	-10.9	5.50	50.0	347
2004	1,055,202	50.5	6.30	52.0	578
2005	1,421,615	34.7	6.30	52.0	832
2006	1,700,041	19.6	6.50	54.8	1,049
2007	2,015,128	18.5	6.50	54.8	1,400
2008	2,125,465	5.5	6.65	62.7	1,595
2009	2,161,577	1.7	6.45	63.6	1,561
2010	2,508,289	16.0	6.45	65.7	1,786
2011	2,881,862	14.9	6.50	66.2	1,912
2012	3,584,307	24.4	6.30	68.5	2,210
2013	4,210,165	17.5	6.75	69.5	2,547
2014	4,502,775	7.0	6.50	67.6	2,736
2015	4,775,231	6.1	6.80	70.2	3,012
2016	5,011,712	5.0	6.30	68.9	3,212
2017	5,602,157	11.8	6.60	71.3	3,638

International Tourist Arrivals to Cambodia

Months	2013	2014	2015	2016	2017	2018	Change (%)				
							14/13	15/13	16/15	17/16	18*/17
Q1	1,172,072	1,267,922	1,307,836	1,342,477	1,502,896	1,711,253	8.2	3.1	2.6	11.9	13.9
Jan	404,106	442,045	460,577	466,086	532,206	596,241	9.4	4.2	1.2	14.2	12.0
Feb	385,760	425,801	430,207	448,468	493,316	542,937	10.4	1.0	4.2	10.0	10.1
Mar	382,206	400,076	417,052	427,923	477,374	572,075	4.7	4.2	2.6	11.6	19.8
Q2	920,527	933,446	994,154	1,018,455	1,159,783	463,423	1.4	6.5	2.4	13.9	
Apr	327,000	332,690	361,139	367,684	412,925	463,423	1.7	8.6	1.8	12.3	12.2
May	292,115	300,302	314,748	320,601	368,809		2.8	4.8	1.9	15.0	
Jun	301,412	300,454	318,267	330,170	378,049		-0.3	5.9	3.7	14.5	
Q3	964,612	998,690	1,044,880	1,147,483	1,250,082	0	3.5	4.6	9.8	8.9	
Jul	338,761	340,091	364,325	395,761	446,627		0.4	7.1	8.6	12.9	
Aug	342,064	347,211	366,096	406,214	427,224		1.5	5.4	11.0	5.2	
Sep	283,787	311,388	314,459	345,508	376,231		9.7	1.0	9.9	8.9	
Q4	1,152,954	1,302,717	1,428,361	1,503,297	1,689,396	0	13.0	9.6	5.2	12.4	
Oct	334,410	390,637	408,922	414,077	417,039		16.8	4.7	1.3	0.7	
Nov	386,737	411,501	444,640	477,686	570,471		6.4	8.1	7.4	19.4	
Dec	431,807	500,579	574,799	611,534	701,886		15.9	14.8	6.4	14.8	
Total	4,210,165	4,502,775	4,775,231	5,011,712	5,602,157	2,174,676	7.0	6.1	5.0	11.8	13.5



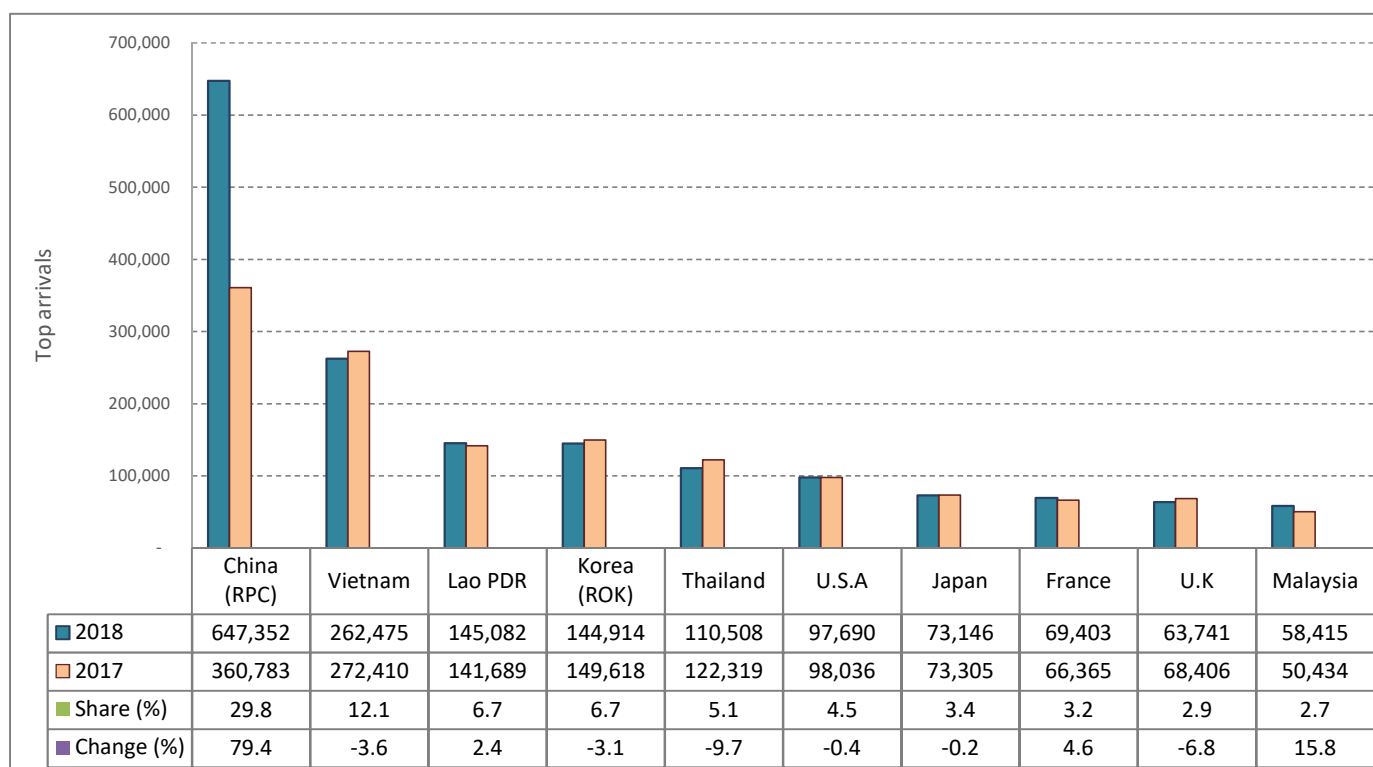
CAMBODIA: TOURISM STATISTICS REPORT IN THE FIRST FOUR MONTHS 2018

I. INBOUND TOURISM

1. International tourist arrivals in January - April 2018

	Inbound tourism			Share (%) 2018*	Change (%)	
	2016	2017	2018		17/16	2018*/17
Air	968,600	1,165,201	1,455,183	66.9	20.3	24.9
Phnom Penh Int'l Airport (PNH)	387,375	455,675	642,980	29.6	17.6	41.1
Siem Reap Int'l Airport (REP)	578,407	682,480	768,801	35.4	18.0	12.6
Kong Keng (KOS)	2,818	27,046	43,402	2.0	859.8	60.5
Land and Waterways	741,561	750,620	719,493	33.1	1.2	-4.1
Land	666,768	670,478	653,833	30.1	0.6	-2.5
Waterways	74,793	80,142	65,660	3.0	7.2	-18.1
Total	1,710,161	1,915,821	2,174,676	100.0	12.0	13.5

2. Top ten markets arrivals in January - April 2018



II. OUTBOUND TOURISM

Outbound tourism in January - April 2018

	Outbound tourism			Change (%)	
	2016	2017	2018	17/16	2018*/17
Cambodian Outbound Tourists	461,921	545,216	652,566	18.0	19.7
International Tourists Departure	1,614,824	1,764,262	2,083,659	9.3	18.1

III. INTERNAL TOURISM

Foreign visitor arrivals to the regions in January - April 2018

	Arrivals			Share (%) 2018*	Change (%)	
	2016	2017	2018		17/16	2018*/17
Phnom Penh & Surrounding	860,465	970,196	1,123,674	44.3	12.8	15.8
Siem Reap Angkor	849,696	945,625	1,050,992	41.4	11.3	11.1
Coastal Areas	267,042	284,622	333,433	13.1	6.6	17.1
Eco-tourism Areas	25,438	28,356	29,348	1.2	11.5	3.5
Total	2,002,641	2,228,799	2,537,447	100.0	11.3	13.8

International Tourist Arrivals to Cambodia by Country of Residence in January - April 2018

(by all means of transportation)

Regions Country of Residence	2017		2018				Share	Change	
			Purposes of Visit			Total	Female	2018*	2018*/17
			Holiday	Business	Others			(%)	(%)
Grand Total	1,915,821	1,929,899	176,446	68,331	2,174,676	984,062	100.0	13.5	
Asia and the Pacific	1,385,390	1,461,739	162,328	39,718	1,663,785	752,426	76.5	20.1	
ASEAN (Southeast Asia)	667,578	597,270	37,885	20,814	655,969	304,736	30.2	-1.7	
Brunei Darussalam	326	238	7	25	270	104	0.0	-17.2	
Indonesia	16,299	11,579	4,960	1,725	18,264	5,124	0.8	12.1	
Lao PDR	141,689	141,692	81	3,309	145,082	88,538	6.7	2.4	
Malaysia	50,434	52,089	4,492	1,834	58,415	19,259	2.7	15.8	
Myanmar	6,705	6,083	868	748	7,699	3,294	0.4	14.8	
Philippines	34,175	23,309	3,361	1,666	28,336	14,845	1.3	-17.1	
Singapore	23,221	22,181	1,394	1,345	24,920	7,393	1.1	7.3	
Thailand	122,319	97,849	7,804	4,855	110,508	41,292	5.1	-9.7	
Vietnam	272,410	242,250	14,918	5,307	262,475	124,887	12.1	-3.6	
Northeast Asia	628,920	789,488	119,451	9,207	918,146	412,797	42.2	46.0	
China	360,783	545,130	99,168	3,054	647,352	293,394	29.8	79.4	
Hong Kong (China)	6,081	3,509	38	51	3,598	1,536	0.2	-40.8	
Japan	73,305	63,330	7,895	1,921	73,146	27,579	3.4	-0.2	
Korea (ROK)	149,618	136,784	5,539	2,591	144,914	69,717	6.7	-3.1	
Macau (China)	173	98	6	13	117	31	0.0	-32.4	
Mongolia	297	301	13	15	329	172	0.0	10.8	
Taiwan (China)	38,663	40,336	6,792	1,562	48,690	20,368	2.2	25.9	
Southern Asia	21,548	23,009	2,186	368	25,563	7,937	1.2	18.6	
Afghanistan	66	70	5	8	83	16	0.0	25.8	
Bangladesh	624	778	144	51	973	101	0.0	55.9	
Bhutan	85	36	5	7	48	62	0.0	-43.5	
India	18,042	19,222	1,467	179	20,868	6,872	1.0	15.7	
Iran	348	509	19	15	543	191	0.0	56.0	
Nepal	959	751	119	42	912	278	0.0	-4.9	
Pakistan	579	799	153	43	995	141	0.0	71.8	
Sri Lanka	845	844	274	23	1,141	276	0.1	35.0	
Oceania	63,767	48,375	2,076	7,179	57,630	24,596	2.7	-9.6	
Australia	53,378	41,067	1,784	5,549	48,400	20,446	2.2	-9.3	
Fiji	129	57	13	15	85	30	0.0	-34.1	
New Zealand	10,260	7,251	279	1,615	9,145	4,120	0.4	-10.9	
Other Asia & the Pacific	3,577	3,597	730	2,150	6,477	2,360	0.3	81.1	
Europe	365,599	333,388	9,160	11,861	354,409	160,962	16.3	-3.1	
Northern Europe	99,339	88,119	2,803	1,105	92,027	39,323	4.2	-7.4	
Denmark	6,901	6,098	104	90	6,292	3,020	0.3	-8.8	
Finland	3,500	3,373	87	74	3,534	1,475	0.2	1.0	
Iceland	524	407	5	8	420	129	0.0	-19.8	
Ireland	4,357	4,249	151	44	4,444	1,921	0.2	2.0	
Norway	5,607	5,018	81	61	5,160	2,226	0.2	-8.0	
Sweden	10,044	8,094	191	151	8,436	3,459	0.4	-16.0	
United Kingdom	68,406	60,880	2,184	677	63,741	27,093	2.9	-6.8	
Western Europe	163,784	135,838	4,313	8,488	148,639	66,013	6.8	-9.2	
Austria	5,947	4,817	61	106	4,984	2,225	0.2	-16.2	
Belgium	8,686	7,014	215	260	7,489	3,291	0.3	-13.8	
France	66,365	59,876	2,685	6,842	69,403	31,411	3.2	4.6	
Germany	58,344	44,504	751	648	45,903	19,958	2.1	-21.3	
Luxembourg	422	331	9	8	348	145	0.0	-17.5	
Monaco	42	27	5	9	41	16	0.0	-2.4	
Netherlands	12,956	10,664	347	192	11,203	4,981	0.5	-13.5	
Switzerland	11,022	8,605	240	423	9,268	3,986	0.4	-15.9	
Central / Eastern Europe	57,451	64,393	889	344	65,626	33,669	3.0	14.2	
Bulgaria	1,456	1,221	15	12	1,248	610	0.1	-14.3	
Czech Republic	4,087	3,895	50	21	3,966	1,801	0.2	-3.0	
Estonia	1,332	1,468	18	9	1,495	658	0.1	12.2	
Hungary	3,264	2,857	24	11	2,892	1,335	0.1	-11.4	
Kazakhstan	945	832	96	22	950	489	0.0	0.5	
Kyrgyzstan	98	88	7	9	104	45	0.0	6.1	
Latvia	612	680	13	7	700	339	0.0	14.4	
Lithuania	1,516	1,155	55	22	1,232	631	0.1	-18.7	
Poland	8,990	9,141	77	37	9,255	4,572	0.4	2.9	
Romania	1,545	1,676	21	17	1,714	912	0.1	10.9	
Russian Federation	28,430	36,186	400	109	36,695	19,683	1.7	29.1	
Slovakia	1,863	1,821	25	23	1,869	845	0.1	0.3	
Ukraine	3,084	3,191	51	21	3,263	1,688	0.2	5.8	
Uzbekistan	229	182	37	24	243	61	0.0	6.1	

International Tourist Arrivals to Cambodia by Country of Residence in January - April 2018

(by all means of transportation)

Regions Country of Residence	2017	2018			Total	Female	Share	Change
		Purposes of Visit					2018*	2018*/17
		Holiday	Business	Others			(%)	(%)
Grand Total	1,915,821	1,929,899	176,446	68,331	2,174,676	984,062	100.0	13.5
Southern Europe	32,157	32,716	674	221	33,611	15,064	1.5	4.5
Croatia	833	979	17	14	1,010	472	0.0	21.2
Greece	823	854	13	9	876	384	0.0	6.4
Italy	15,554	14,950	382	101	15,433	6,715	0.7	-0.8
Malta	206	158	9	7	174	73	0.0	-15.5
Portugal	2,906	2,662	41	18	2,721	1,329	0.1	-6.4
Serbia	615	616	9	6	631	334	0.0	2.6
Slovenia	736	734	20	12	766	273	0.0	4.1
Spain	10,484	11,763	183	54	12,000	5,484	0.6	14.5
East Mediterranean Europe	10,408	10,342	142	266	10,750	5,207	0.5	3.3
Israel	6,702	6,742	53	60	6,855	3,373	0.3	2.3
Turkey	3,706	3,600	89	206	3,895	1,834	0.2	5.1
Other Europe	2,460	1,980	339	1,437	3,756	1,686	0.2	52.7
Americas	158,564	129,601	4,439	16,513	150,553	68,482	6.9	-5.1
North America	130,951	108,212	4,139	15,770	128,121	57,117	5.9	-2.2
Canada	29,842	24,248	905	2,215	27,368	12,709	1.3	-8.3
Mexico	3,073	3,023	19	21	3,063	1,496	0.1	-0.3
United States of America	98,036	80,941	3,215	13,534	97,690	42,912	4.5	-0.4
Central America	486	626	21	18	665	285	0.0	36.8
Costa Rica	352	536	9	7	552	249	0.0	56.8
Honduras	69	55	6	5	66	22	0.0	-4.3
Jamaica	65	35	6	6	47	14	0.0	-27.7
South America	25,689	19,645	169	216	20,030	10,389	0.9	-22.0
Argentina	9,840	7,180	11	46	7,237	3,790	0.3	-26.5
Brazil	8,371	6,045	46	101	6,192	3,107	0.3	-26.0
Chile	3,519	2,676	24	15	2,715	1,446	0.1	-22.8
Colombia	1,820	1,726	57	23	1,806	944	0.1	-0.8
Ecuador	273	277	4	7	288	149	0.0	5.5
Peru	627	726	12	12	750	374	0.0	19.6
Uruguay	949	896	5	5	906	518	0.0	-4.5
Venezuela	290	119	10	7	136	61	0.0	-53.1
Other America	1,438	1,118	110	509	1,737	691	0.1	20.8
Africa	4,353	3,694	399	139	4,232	1,871	0.2	-2.8
North Africa	375	550	27	26	603	239	0.0	60.8
Morocco	212	365	11	14	390	172	0.0	84.0
Sudan	43	55	11	5	71	10	0.0	65.1
Tunisia	120	130	5	7	142	57	0.0	18.3
Subsaharan Africa	3,552	2,897	350	79	3,326	1,516	0.2	-6.4
Cameroon	41	62	10	9	81	17	0.0	97.6
Congo	44	24	5	5	34	9	0.0	-22.7
Ghana	102	37	6	7	50	14	0.0	-51.0
Kenya	124	120	11	17	148	81	0.0	19.4
Liberia	18	21	4	4	29	9	0.0	61.1
Nigeria	833	72	133	7	212	32	0.0	-74.5
South Africa	2,178	2,470	165	12	2,647	1,301	0.1	21.5
Tanzania	104	30	4	6	40	15	0.0	-61.5
Uganda	54	23	6	4	33	19	0.0	-38.9
Zimbabwe	54	38	6	8	52	19	0.0	-3.7
Other Africa	426	247	22	34	303	116	0.0	-28.9
Middle East	1,915	1,477	120	100	1,697	321	0.1	-11.4
Egypt	350	275	15	10	300	70	0.0	-14.3
Iraq	74	100	11	6	117	13	0.0	58.1
Jordan	226	160	15	5	180	35	0.0	-20.4
Kuwait	262	167	8	8	183	18	0.0	-30.2
Oman	84	62	5	5	72	6	0.0	-14.3
Palestine	49	22	14	6	42	5	0.0	-14.3
Qatar	49	33	5	6	44	7	0.0	-10.2
Saudi Arabia	106	90	4	8	102	14	0.0	-3.8
Syria	185	140	8	9	157	21	0.0	-15.1
United Arab Emirates	67	66	11	5	82	18	0.0	22.4
Yemen	126	151	8	5	164	27	0.0	30.2
Other Middle East	337	211	16	27	254	87	0.0	-24.6

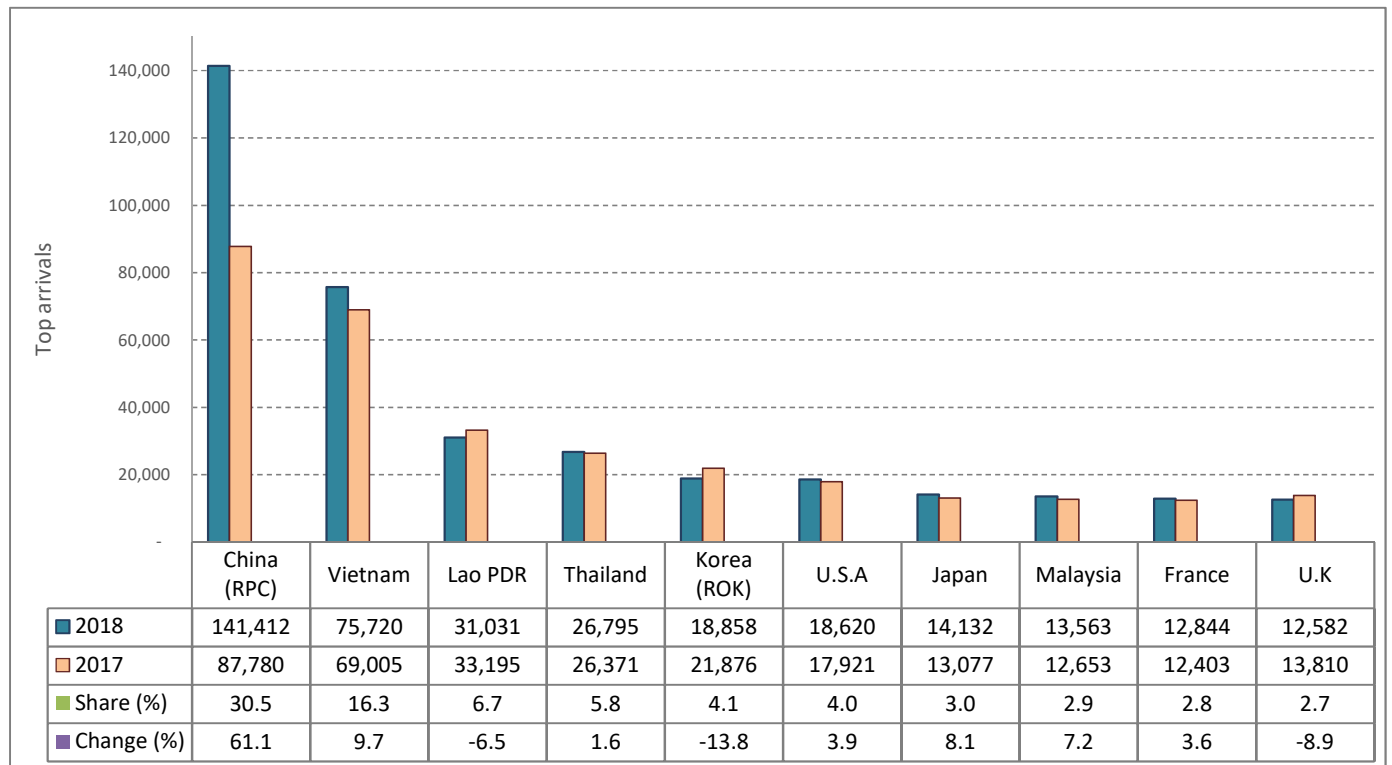
CAMBODIA: TOURISM STATISTICS REPORT IN APRIL 2018

I. INBOUND TOURISM

1. International tourist arrivals in April 2018

	Inbound tourism			Share (%) 2018*	Change (%)	
	2016	2017	2018		17/16	2018*/17
Air	183,563	243,791	297,551	64.2	32.8	22.1
Phnom Penh Int'l Airport (PNH)	84,094	109,072	147,765	31.9	29.7	35.5
Siem Reap Int'l Airport (REP)	99,012	130,003	137,357	29.6	31.3	5.7
Kong Keng (KOS)	457	4,716	12,429	2.7	931.9	163.5
Land and Waterways	184,121	169,134	165,872	35.8	-8.1	-1.9
Land	173,712	160,517	155,817	33.6	-7.6	-2.9
Waterways	10,409	8,617	10,055	2.2	-17.2	16.7
Total	367,684	412,925	463,423	100.0	12.3	12.2

2. Top ten markets arrivals in April 2018



II. OUTBOUND TOURISM

Outbound tourism in April 2018

	Outbound tourism			Change (%)	
	2016	2017	2018	17/16	2018*/17
Cambodian Outbound Tourists	133,574	176,871	212,661	32.4	20.2
International Tourists Departure	331,546	397,797	454,736	20.0	14.3

III. INTERNAL TOURISM

Foreign visitor arrivals to the regions in April 2018

	Arrivals			Share (%) 2018*	Change (%)	
	2016	2017	2018		17/16	2018*/17
Phnom Penh & Surrounding	220,742	231,705	271,011	48.9	5.0	17.0
Siem Reap Angkor	146,942	181,220	192,412	34.7	23.3	6.2
Coastal Areas	68,631	66,334	84,981	15.3	-3.3	28.1
Eco-tourism Areas	5,772	6,386	5,826	1.1	10.6	-8.8
Total	442,087	485,645	554,230	100.0	9.9	14.1

International Tourist Arrivals to Cambodia by Country of Residence in April 2018

(by all means of transportation)

Regions Country of Residence	2017	2018			Total	Female	Share	Change
		Purposes of Visit					2018*	2018*/17
		Holiday	Business	Others			(%)	(%)
Grand Total	412,925	396,917	51,215	15,291	463,423	208,216	100.0	12.2
Asia and the Pacific	316,446	317,386	47,538	8,108	373,032	168,073	80.5	17.9
ASEAN (Southeast Asia)	163,075	152,007	10,765	2,890	165,662	79,733	35.7	1.6
Brunei Darussalam	87	55	1	7	63	24	0.0	-27.6
Indonesia	3,997	2,914	1,397	39	4,350	1,293	0.9	8.8
Lao PDR	33,195	30,287	29	715	31,031	19,360	6.7	-6.5
Malaysia	12,653	12,147	1,299	117	13,563	4,448	2.9	7.2
Myanmar	2,577	1,786	238	30	2,054	1,034	0.4	-20.3
Philippines	9,596	5,850	1,282	80	7,212	4,016	1.6	-24.8
Singapore	5,594	4,432	377	65	4,874	1,432	1.1	-12.9
Thailand	26,371	23,680	2,282	833	26,795	10,445	5.8	1.6
Vietnam	69,005	70,856	3,860	1,004	75,720	37,681	16.3	9.7
Northeast Asia	133,926	149,207	35,545	2,887	187,639	80,731	40.5	40.1
China	87,780	111,113	29,672	627	141,412	62,138	30.5	61.1
Hong Kong (China)	1,116	614	8	22	644	308	0.1	-42.3
Japan	13,077	11,207	2,140	785	14,132	5,017	3.0	8.1
Korea (ROK)	21,876	16,184	1,729	945	18,858	7,689	4.1	-13.8
Macau (China)	82	19	1	2	22	2	0.0	-73.2
Mongolia	45	22	3	3	28	12	0.0	-37.8
Taiwan (China)	9,950	10,048	1,992	503	12,543	5,565	2.7	26.1
Southern Asia	5,153	5,273	631	94	5,998	1,729	1.3	16.4
Afghanistan	12	19	1	1	21	3	0.0	75.0
Bangladesh	189	287	44	19	350	1	0.1	85.2
Bhutan	8	3	1	1	5	43	0.0	-37.5
India	4,224	4,240	386	48	4,674	1,447	1.0	10.7
Iran	78	54	8	3	65	23	0.0	-16.7
Nepal	227	158	30	9	197	56	0.0	-13.2
Pakistan	151	197	45	4	246	24	0.1	62.9
Sri Lanka	264	315	116	9	440	132	0.1	66.7
Oceania	13,715	10,381	578	1,642	12,601	5,463	2.7	-8.1
Australia	11,141	8,537	490	1,293	10,320	4,415	2.2	-7.4
Fiji	49	17	4	4	25	6	0.0	-49.0
New Zealand	2,525	1,827	84	345	2,256	1,042	0.5	-10.7
Other Asia & the Pacific	577	518	19	595	1,132	417	0.2	96.2
Europe	64,841	55,671	2,380	3,031	61,082	27,426	13.2	-5.8
Northern Europe	18,864	15,803	698	284	16,785	7,157	3.6	-11.0
Denmark	1,215	993	24	21	1,038	504	0.2	-14.6
Finland	497	464	20	12	496	209	0.1	-0.2
Iceland	73	41	1	2	44	19	0.0	-39.7
Ireland	943	856	40	14	910	400	0.2	-3.5
Norway	1,056	627	16	23	666	297	0.1	-36.9
Sweden	1,270	953	50	46	1,049	420	0.2	-17.4
United Kingdom	13,810	11,869	547	166	12,582	5,308	2.7	-8.9
Western Europe	27,670	22,595	1,201	2,174	25,970	11,458	5.6	-6.1
Austria	760	615	21	31	667	283	0.1	-12.2
Belgium	2,016	1,325	55	62	1,442	614	0.3	-28.5
France	12,403	10,307	764	1,773	12,844	5,644	2.8	3.6
Germany	8,156	6,928	184	154	7,266	3,175	1.6	-10.9
Luxembourg	83	106	3	2	111	53	0.0	33.7
Monaco	6	6	1	2	9	3	0.0	50.0
Netherlands	2,264	1,945	113	55	2,113	987	0.5	-6.7
Switzerland	1,982	1,363	60	95	1,518	699	0.3	-23.4
Central / Eastern Europe	9,110	9,181	230	74	9,485	4,944	2.0	4.1
Bulgaria	251	184	2	3	189	97	0.0	-24.7
Czech Republic	657	482	10	3	495	219	0.1	-24.7
Estonia	182	172	4	5	181	86	0.0	-0.5
Hungary	508	295	6	3	304	108	0.1	-40.2
Kazakhstan	157	89	33	2	124	72	0.0	-21.0
Kyrgyzstan	14	15	1	1	17	9	0.0	21.4
Latvia	127	104	4	2	110	49	0.0	-13.4
Lithuania	224	123	8	3	134	60	0.0	-40.2
Poland	1,203	1,329	29	5	1,363	655	0.3	13.3
Romania	218	211	5	3	219	96	0.0	0.5
Russian Federation	4,690	5,446	103	24	5,573	3,137	1.2	18.8
Slovakia	328	265	5	10	280	125	0.1	-14.6
Ukraine	526	448	16	7	471	224	0.1	-10.5
Uzbekistan	25	18	4	3	25	7	0.0	0.0

International Tourist Arrivals to Cambodia by Country of Residence in April 2018

(by all means of transportation)

Regions Country of Residence	2017	2018			Total	Female	Share	Change
		Purposes of Visit					2018*	2018*/17
		Holiday	Business	Others			(%)	(%)
Grand Total	412,925	396,917	51,215	15,291	463,423	208,216	100.0	12.2
Southern Europe	6,893	5,945	191	64	6,200	2,683	1.3	-10.1
Croatia	76	154	6	5	165	68	0.0	117.1
Greece	233	189	4	3	196	104	0.0	-15.9
Italy	2,876	2,340	96	30	2,466	1,009	0.5	-14.3
Malta	20	15	4	2	21	8	0.0	5.0
Portugal	803	494	17	4	515	250	0.1	-35.9
Serbia	62	56	3	2	61	38	0.0	-1.6
Slovenia	88	104	6	3	113	48	0.0	28.4
Spain	2,735	2,593	55	15	2,663	1,158	0.6	-2.6
East Mediterranean Europe	1,817	1,775	47	53	1,875	856	0.4	3.2
Israel	1,206	1,180	20	16	1,216	546	0.3	0.8
Turkey	611	595	27	37	659	310	0.1	7.9
Other Europe	487	372	13	382	767	328	0.2	57.5
Americas	29,949	22,744	1,187	4,087	28,018	12,284	6.0	-6.4
North America	24,293	18,924	1,127	3,968	24,019	10,311	5.2	-1.1
Canada	5,266	4,014	244	478	4,736	2,134	1.0	-10.1
Mexico	1,106	651	5	7	663	293	0.1	-40.1
United States of America	17,921	14,259	878	3,483	18,620	7,884	4.0	3.9
Central America	133	102	3	6	111	50	0.0	-16.5
Costa Rica	99	85	1	2	88	47	0.0	-11.1
Honduras	13	14	1	2	17	2	0.0	30.8
Jamaica	21	3	1	2	6	1	0.0	-71.4
South America	5,185	3,593	48	26	3,667	1,848	0.8	-29.3
Argentina	1,806	1,070	3	2	1,075	551	0.2	-40.5
Brazil	1,802	1,057	9	8	1,074	507	0.2	-40.4
Chile	499	426	10	6	442	206	0.1	-11.4
Colombia	454	341	20	4	365	196	0.1	-19.6
Ecuador	71	41	1	2	44	29	0.0	-38.0
Peru	181	171	2	1	174	90	0.0	-3.9
Uruguay	305	474	1	1	476	268	0.1	56.1
Venezuela	67	13	2	2	17	1	0.0	-74.6
Other America	338	125	9	87	221	75	0.0	-34.6
Africa	1,116	791	87	45	923	388	0.2	-17.3
North Africa	89	126	7	9	142	60	0.0	59.6
Morocco	53	67	4	7	78	35	0.0	47.2
Sudan	8	13	1	1	15	1	0.0	87.5
Tunisia	28	46	2	1	49	24	0.0	75.0
Subsaharan Africa	844	638	75	29	742	318	0.2	-12.1
Cameroon	11	16	2	3	21	3	0.0	90.9
Congo	6	9	1	2	12	2	0.0	100.0
Ghana	12	7	1	3	11	4	0.0	-8.3
Kenya	14	25	2	10	37	16	0.0	164.3
Liberia	7	6	1	1	8	4	0.0	14.3
Nigeria	212	24	21	3	48	9	0.0	-77.4
South Africa	556	533	44	1	578	275	0.1	4.0
Tanzania	4	4	1	2	7	1	0.0	75.0
Uganda	10	4	1	1	6	2	0.0	-40.0
Zimbabwe	12	10	1	3	14	2	0.0	16.7
Other Africa	183	27	5	7	39	10	0.0	-78.7
Middle East	573	325	23	20	368	45	0.1	-35.8
Egypt	157	59	2	2	63	9	0.0	-59.9
Iraq	23	24	3	1	28	1	0.0	21.7
Jordan	40	39	3	1	43	6	0.0	7.5
Kuwait	63	41	2	2	45	4	0.0	-28.6
Oman	25	11	1	1	13	1	0.0	-48.0
Palestine	10	5	1	1	7	1	0.0	-30.0
Qatar	4	12	2	1	15	2	0.0	275.0
Saudi Arabia	25	26	1	2	29	3	0.0	16.0
Syria	48	36	1	2	39	3	0.0	-18.8
United Arab Emirates	11	15	1	1	17	1	0.0	54.5
Yemen	24	41	3	1	45	8	0.0	87.5
Other Middle East	143	16	3	5	24	6	0.0	-83.2