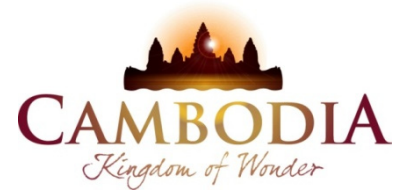




KINGDOM OF CAMBODIA
NATION RELIGION KING



TOURISM STATISTICS REPORT

May 2018

MINISTRY OF TOURISM

Statistics and Tourism Information Department

No. A3, Street 169, Sangkat Veal Vong, Khan 7 Makara, Phnom Penh, Cambodia.

Fax: +855 23 885003

E-mail: kong@tourism.gov.kh

Web site: www.tourism.gov.kh

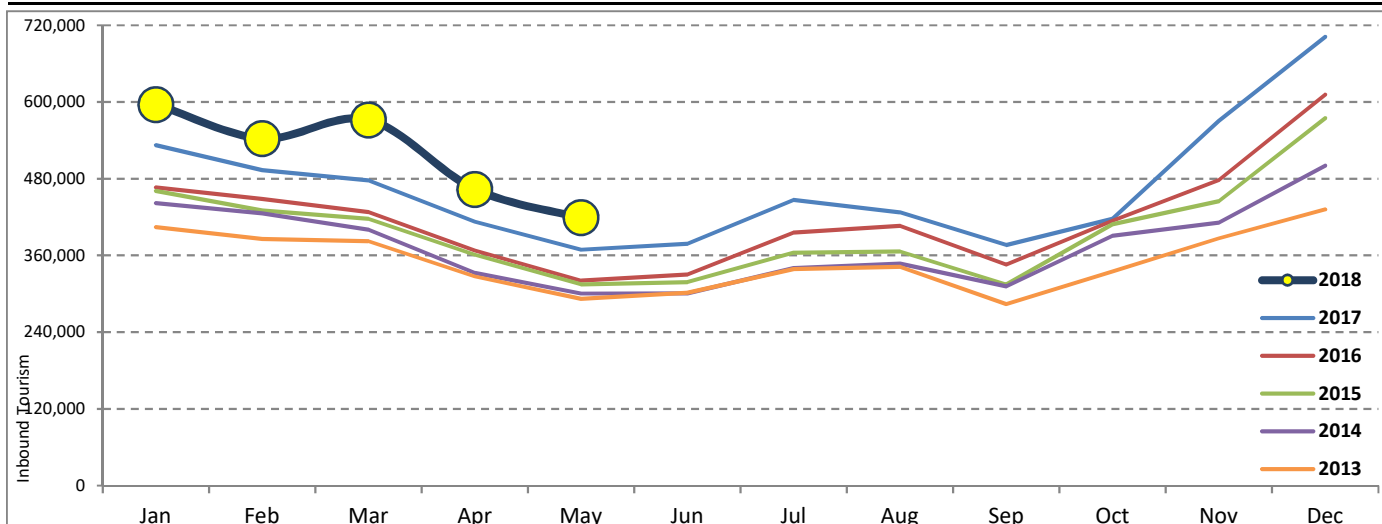
Tourism Highlights

Int'l Tourist Arrivals, Average Length of Stays, Hotel Occupancy & Int'l Tourism Receipts 1993 - 2017

Years	Int'l Tourist Arrivals		Average Length	Hotel Occupancy	Int'l Tourism Receipts
	Number	Change (%)	of Stays (Days)	(%)	(Million US\$)
1993	118,183	-	N/A	N/A	N/A
1994	176,617	49.4	N/A	N/A	N/A
1995	219,680	24.4	8.00	37.0	100
1996	260,489	18.6	7.50	40.0	118
1997	218,843	-16.0	6.40	30.0	103
1998	286,524	30.9	5.20	40.0	166
1999	367,743	28.3	5.50	44.0	190
2000	466,365	26.8	5.50	45.0	228
2001	604,919	29.7	5.50	48.0	304
2002	786,524	30.0	5.80	50.0	379
2003	701,014	-10.9	5.50	50.0	347
2004	1,055,202	50.5	6.30	52.0	578
2005	1,421,615	34.7	6.30	52.0	832
2006	1,700,041	19.6	6.50	54.8	1,049
2007	2,015,128	18.5	6.50	54.8	1,400
2008	2,125,465	5.5	6.65	62.7	1,595
2009	2,161,577	1.7	6.45	63.6	1,561
2010	2,508,289	16.0	6.45	65.7	1,786
2011	2,881,862	14.9	6.50	66.2	1,912
2012	3,584,307	24.4	6.30	68.5	2,210
2013	4,210,165	17.5	6.75	69.5	2,547
2014	4,502,775	7.0	6.50	67.6	2,736
2015	4,775,231	6.1	6.80	70.2	3,012
2016	5,011,712	5.0	6.30	68.9	3,212
2017	5,602,157	11.8	6.60	71.3	3,638

International Tourist Arrivals to Cambodia

Months	2013	2014	2015	2016	2017	2018	Change (%)				
							14/13	15/13	16/15	17/16	18*/17
Q1	1,172,072	1,267,922	1,307,836	1,342,477	1,502,896	1,711,253	8.2	3.1	2.6	11.9	13.9
Jan	404,106	442,045	460,577	466,086	532,206	596,241	9.4	4.2	1.2	14.2	12.0
Feb	385,760	425,801	430,207	448,468	493,316	542,937	10.4	1.0	4.2	10.0	10.1
Mar	382,206	400,076	417,052	427,923	477,374	572,075	4.7	4.2	2.6	11.6	19.8
Q2	920,527	933,446	994,154	1,018,455	1,159,783	882,594	1.4	6.5	2.4	13.9	
Apr	327,000	332,690	361,139	367,684	412,925	463,423	1.7	8.6	1.8	12.3	12.2
May	292,115	300,302	314,748	320,601	368,809	419,171	2.8	4.8	1.9	15.0	13.7
Jun	301,412	300,454	318,267	330,170	378,049		-0.3	5.9	3.7	14.5	
Q3	964,612	998,690	1,044,880	1,147,483	1,250,082	0	3.5	4.6	9.8	8.9	
Jul	338,761	340,091	364,325	395,761	446,627		0.4	7.1	8.6	12.9	
Aug	342,064	347,211	366,096	406,214	427,224		1.5	5.4	11.0	5.2	
Sep	283,787	311,388	314,459	345,508	376,231		9.7	1.0	9.9	8.9	
Q4	1,152,954	1,302,717	1,428,361	1,503,297	1,689,396	0	13.0	9.6	5.2	12.4	
Oct	334,410	390,637	408,922	414,077	417,039		16.8	4.7	1.3	0.7	
Nov	386,737	411,501	444,640	477,686	570,471		6.4	8.1	7.4	19.4	
Dec	431,807	500,579	574,799	611,534	701,886		15.9	14.8	6.4	14.8	
Total	4,210,165	4,502,775	4,775,231	5,011,712	5,602,157	2,593,847	7.0	6.1	5.0	11.8	13.5



Source: Tourism Statistics Department, MOT

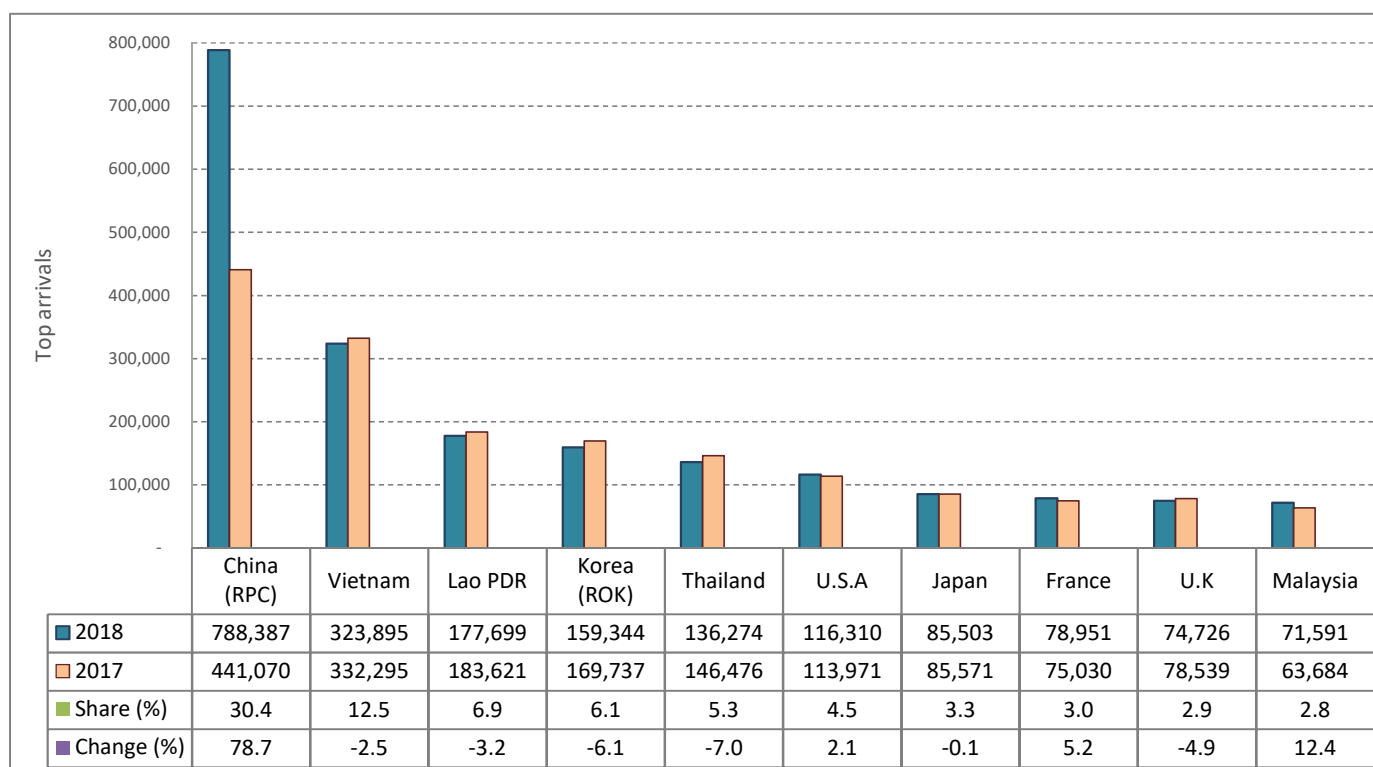
CAMBODIA: TOURISM STATISTICS REPORT IN THE FIRST FIVE MONTHS 2018

I. INBOUND TOURISM

1. International tourist arrivals in January - May 2018

	Inbound tourism			Share (%) 2018*	Change (%)	
	2016	2017	2018		17/16	2018*/17
Air	1,133,940	1,382,555	1,726,944	66.6	21.9	24.9
Phnom Penh Int'l Airport (PNH)	471,072	559,759	785,266	30.3	18.8	40.3
Siem Reap Int'l Airport (REP)	659,503	793,186	885,731	34.1	20.3	11.7
Kong Keng (KOS)	3,365	29,610	55,947	2.2	779.9	88.9
Land and Waterways	896,822	902,075	866,903	33.4	0.6	-3.9
Land	815,184	816,894	794,314	30.6	0.2	-2.8
Waterways	81,638	85,181	72,589	2.8	4.3	-14.8
Total	2,030,762	2,284,630	2,593,847	100.0	12.5	13.5

2. Top ten markets arrivals in January - May 2018



II. OUTBOUND TOURISM

Outbound tourism in January - May 2018

	Outbound tourism			Change (%)	
	2016	2017	2018	17/16	2018*/17
Cambodian Outbound Tourists	589,181	700,027	811,064	18.8	15.9
International Tourists Departure	1,933,936	2,139,490	2,503,223	10.6	17.0

III. INTERNAL TOURISM

Foreign visitor arrivals to the regions in January - May 2018

	Arrivals			Share (%) 2018*	Change (%)	
	2016	2017	2018		17/16	2018*/17
Phnom Penh & Surrounding	1,055,119	1,191,994	1,387,649	45.6	13.0	16.4
Siem Reap Angkor	975,643	1,092,636	1,206,188	39.6	12.0	10.4
Coastal Areas	319,340	339,014	415,583	13.6	6.2	22.6
Eco-tourism Areas	30,269	33,737	35,586	1.2	11.5	5.5
Total	2,380,371	2,657,381	3,045,006	100.0	11.6	14.6

International Tourist Arrivals to Cambodia by Country of Residence in January - May 2018

(by all means of transportation)

Regions Country of Residence	2017		2018			Share		Change
	Purposes of Visit			Total	Female	2018*	2018*/17	
	Holiday	Business	Others					(%)
Grand Total	2,284,630	2,284,797	228,721	80,329	2,593,847	1,172,955	100.0	13.5
Asia and the Pacific	1,683,763	1,753,697	210,955	45,250	2,009,902	905,367	77.5	19.4
ASEAN (Southeast Asia)	827,727	736,677	47,835	22,765	807,277	378,419	31.1	-2.5
Brunei Darussalam	407	267	8	30	305	116	0.0	-25.1
Indonesia	19,949	14,208	6,083	1,772	22,063	6,352	0.9	10.6
Lao PDR	183,621	173,948	96	3,655	177,699	110,429	6.9	-3.2
Malaysia	63,684	63,829	5,807	1,955	71,591	23,454	2.8	12.4
Myanmar	8,102	7,210	1,108	778	9,096	3,918	0.4	12.3
Philippines	42,481	29,541	4,277	1,728	35,546	18,946	1.4	-16.3
Singapore	30,712	27,626	1,778	1,404	30,808	9,252	1.2	0.3
Thailand	146,476	120,824	9,878	5,572	136,274	51,026	5.3	-7.0
Vietnam	332,295	299,224	18,800	5,871	323,895	154,926	12.5	-2.5
Northeast Asia	751,588	928,171	156,849	11,411	1,096,431	485,918	42.3	45.9
China	441,070	653,841	130,681	3,865	788,387	353,262	30.4	78.7
Hong Kong (China)	7,066	4,035	47	63	4,145	1,769	0.2	-41.3
Japan	85,571	72,805	10,278	2,420	85,503	31,500	3.3	-0.1
Korea (ROK)	169,737	148,991	7,083	3,270	159,344	75,181	6.1	-6.1
Macau (China)	207	164	9	20	193	62	0.0	-6.8
Mongolia	345	337	15	20	372	193	0.0	7.8
Taiwan (China)	47,592	47,998	8,736	1,753	58,487	23,951	2.3	22.9
Southern Asia	26,948	28,277	2,793	470	31,540	9,664	1.2	17.0
Afghanistan	75	88	6	11	105	17	0.0	40.0
Bangladesh	821	965	179	59	1,203	135	0.0	46.5
Bhutan	103	41	6	13	60	65	0.0	-41.7
India	22,646	23,668	1,879	234	25,781	8,416	1.0	13.8
Iran	392	554	23	18	595	197	0.0	51.8
Nepal	1,168	909	151	46	1,106	341	0.0	-5.3
Pakistan	719	1,012	187	54	1,253	178	0.0	74.3
Sri Lanka	1,024	1,040	362	35	1,437	315	0.1	40.3
Oceania	73,064	56,701	2,649	8,261	67,611	28,814	2.6	-7.5
Australia	60,854	48,101	2,268	6,412	56,781	23,940	2.2	-6.7
Fiji	173	69	19	20	108	37	0.0	-37.6
New Zealand	12,037	8,531	362	1,829	10,722	4,837	0.4	-10.9
Other Asia & the Pacific	4,436	3,871	829	2,343	7,043	2,552	0.3	58.8
Europe	409,359	374,079	11,502	14,182	399,763	185,507	15.4	-2.3
Northern Europe	112,648	101,171	3,500	1,381	106,052	44,991	4.1	-5.9
Denmark	7,656	6,688	139	103	6,930	3,283	0.3	-9.5
Finland	3,849	3,684	105	82	3,871	1,606	0.1	0.6
Iceland	611	488	6	10	504	165	0.0	-17.5
Ireland	5,094	5,036	196	52	5,284	2,262	0.2	3.7
Norway	6,143	5,423	90	69	5,582	2,432	0.2	-9.1
Sweden	10,756	8,745	237	173	9,155	3,736	0.4	-14.9
United Kingdom	78,539	71,107	2,727	892	74,726	31,507	2.9	-4.9
Western Europe	182,058	152,423	5,458	10,180	168,061	77,471	6.5	-7.7
Austria	6,358	5,343	85	137	5,565	2,508	0.2	-12.5
Belgium	9,785	7,818	264	324	8,406	3,905	0.3	-14.1
France	75,030	67,315	3,445	8,191	78,951	37,055	3.0	5.2
Germany	63,531	49,705	910	800	51,415	23,133	2.0	-19.1
Luxembourg	465	358	12	13	383	198	0.0	-17.6
Monaco	46	30	6	11	47	19	0.0	2.2
Netherlands	14,681	12,311	448	232	12,991	5,968	0.5	-11.5
Switzerland	12,162	9,543	288	472	10,303	4,685	0.4	-15.3
Central / Eastern Europe	63,257	70,154	1,112	410	71,676	38,613	2.8	13.3
Bulgaria	1,576	1,337	18	14	1,369	707	0.1	-13.1
Czech Republic	4,501	4,191	56	25	4,272	2,020	0.2	-5.1
Estonia	1,446	1,547	19	11	1,577	744	0.1	9.1
Hungary	3,527	3,068	31	16	3,115	1,443	0.1	-11.7
Kazakhstan	1,079	933	133	25	1,091	561	0.0	1.1
Kyrgyzstan	106	139	9	11	159	54	0.0	50.0
Latvia	682	749	15	8	772	388	0.0	13.2
Lithuania	1,668	1,267	59	25	1,351	691	0.1	-19.0
Poland	9,732	10,210	91	43	10,344	5,227	0.4	6.3
Romania	1,726	1,846	26	21	1,893	1,008	0.1	9.7
Russian Federation	31,495	39,079	511	126	39,716	22,820	1.5	26.1
Slovakia	2,017	1,971	27	28	2,026	970	0.1	0.4
Ukraine	3,402	3,608	73	28	3,709	1,912	0.1	9.0
Uzbekistan	300	209	44	29	282	68	0.0	-6.0

International Tourist Arrivals to Cambodia by Country of Residence in January - May 2018

(by all means of transportation)

Regions Country of Residence	2017	2018			Total	Female	Share	Change
		Purposes of Visit					2018*	2018*/17
		Holiday	Business	Others			(%)	(%)
Grand Total	2,284,630	2,284,797	228,721	80,329	2,593,847	1,172,955	100.0	13.5
Southern Europe	36,722	36,835	868	286	37,989	16,973	1.5	3.5
Croatia	881	1,079	19	18	1,116	534	0.0	26.7
Greece	929	901	19	10	930	405	0.0	0.1
Italy	17,161	16,366	486	122	16,974	7,307	0.7	-1.1
Malta	222	167	13	8	188	76	0.0	-15.3
Portugal	3,325	2,996	59	21	3,076	1,491	0.1	-7.5
Serbia	665	654	11	8	673	355	0.0	1.2
Slovenia	794	798	23	19	840	309	0.0	5.8
Spain	12,745	13,874	238	80	14,192	6,496	0.5	11.4
East Mediterranean Europe	11,457	11,321	184	315	11,820	5,604	0.5	3.2
Israel	7,368	7,448	75	84	7,607	3,669	0.3	3.2
Turkey	4,089	3,873	109	231	4,213	1,935	0.2	3.0
Other Europe	3,217	2,175	380	1,610	4,165	1,855	0.2	29.5
Americas	183,658	151,033	5,628	20,571	177,232	79,513	6.8	-3.5
North America	152,097	127,136	5,266	19,748	152,150	66,563	5.9	0.0
Canada	34,383	28,262	1,149	2,693	32,104	14,666	1.2	-6.6
Mexico	3,743	3,674	24	38	3,736	1,777	0.1	-0.2
United States of America	113,971	95,200	4,093	17,017	116,310	50,120	4.5	2.1
Central America	561	745	24	24	793	357	0.0	41.4
Costa Rica	407	571	10	10	591	272	0.0	45.2
Honduras	78	71	7	7	85	28	0.0	9.0
Jamaica	76	103	7	7	117	57	0.0	53.9
South America	29,160	21,951	218	248	22,417	11,850	0.9	-23.1
Argentina	10,849	7,774	14	49	7,837	4,373	0.3	-27.8
Brazil	9,554	6,752	59	108	6,919	3,440	0.3	-27.6
Chile	3,964	3,111	25	16	3,152	1,659	0.1	-20.5
Colombia	2,138	2,045	79	28	2,152	1,140	0.1	0.7
Ecuador	338	309	5	11	325	171	0.0	-3.8
Peru	708	879	15	19	913	452	0.0	29.0
Uruguay	1,288	940	7	7	954	539	0.0	-25.9
Venezuela	321	141	14	10	165	76	0.0	-48.6
Other America	1,840	1,201	120	551	1,872	743	0.1	1.7
Africa	5,269	4,292	491	195	4,978	2,195	0.2	-5.5
North Africa	468	619	33	32	684	275	0.0	46.2
Morocco	284	405	13	15	433	197	0.0	52.5
Sudan	52	71	14	7	92	17	0.0	76.9
Tunisia	132	143	6	10	159	61	0.0	20.5
Subsaharan Africa	4,228	3,416	431	121	3,968	1,797	0.2	-6.1
Cameroon	51	72	14	14	100	21	0.0	96.1
Congo	53	29	6	7	42	10	0.0	-20.8
Ghana	109	66	7	10	83	31	0.0	-23.9
Kenya	152	148	14	25	187	105	0.0	23.0
Liberia	23	33	5	6	44	13	0.0	91.3
Nigeria	922	85	160	12	257	38	0.0	-72.1
South Africa	2,656	2,864	206	25	3,095	1,508	0.1	16.5
Tanzania	125	32	5	7	44	16	0.0	-64.8
Uganda	66	33	7	6	46	25	0.0	-30.3
Zimbabwe	71	54	7	9	70	30	0.0	-1.4
Other Africa	573	257	27	42	326	123	0.0	-43.1
Middle East	2,581	1,696	145	131	1,972	373	0.1	-23.6
Egypt	399	311	21	11	343	77	0.0	-14.0
Iraq	96	108	13	8	129	15	0.0	34.4
Jordan	289	194	17	6	217	38	0.0	-24.9
Kuwait	304	185	10	11	206	23	0.0	-32.2
Oman	99	67	6	7	80	7	0.0	-19.2
Palestine	66	32	16	9	57	7	0.0	-13.6
Qatar	64	37	7	8	52	9	0.0	-18.8
Saudi Arabia	121	99	5	11	115	16	0.0	-5.0
Syria	215	181	9	11	201	29	0.0	-6.5
United Arab Emirates	82	73	14	10	97	20	0.0	18.3
Yemen	381	193	9	6	208	41	0.0	-45.4
Other Middle East	465	216	18	33	267	91	0.0	-42.6

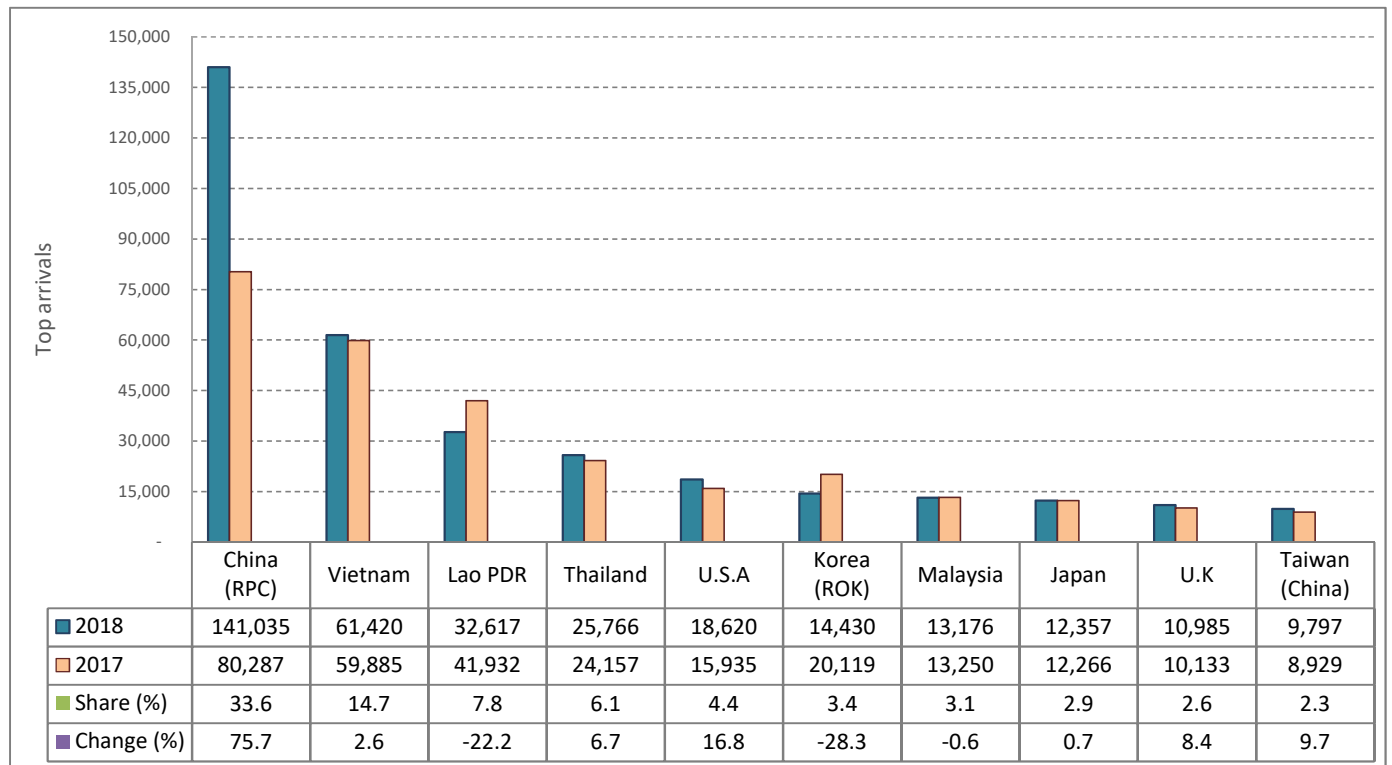
CAMBODIA: TOURISM STATISTICS REPORT IN MAY 2018

I. INBOUND TOURISM

1. International tourist arrivals in May 2018

	Inbound tourism			Share (%) 2018*	Change (%)	
	2016	2017	2018		17/16	2018*/17
Air	165,340	217,354	271,761	64.8	31.5	25.0
Phnom Penh Int'l Airport (PNH)	83,697	104,084	142,286	33.9	24.4	36.7
Siem Reap Int'l Airport (REP)	81,096	110,706	116,930	27.9	36.5	5.6
Kong Keng (KOS)	547	2,564	12,545	3.0	368.7	389.3
Land and Waterways	155,261	151,455	147,410	35.2	-2.5	-2.7
Land	148,416	146,416	140,481	33.5	-1.3	-4.1
Waterways	6,845	5,039	6,929	1.7	-26.4	37.5
Total	320,601	368,809	419,171	100.0	15.0	13.7

2. Top ten markets arrivals in May 2018



II. OUTBOUND TOURISM

Outbound tourism in May 2018

	Outbound tourism			Change (%)	
	2016	2017	2018	17/16	2018*/17
Cambodian Outbound Tourists	127,260	154,811	158,498	21.6	2.4
International Tourists Departure	319,112	375,228	419,564	17.6	11.8

III. INTERNAL TOURISM

Foreign visitor arrivals to the regions in May 2018

	Arrivals			Share (%) 2018*	Change (%)	
	2016	2017	2018		17/16	2018*/17
Phnom Penh & Surrounding	194,654	221,798	263,975	52.0	13.9	19.0
Siem Reap Angkor	125,947	147,011	155,196	30.6	16.7	5.6
Coastal Areas	52,298	54,392	82,150	16.2	4.0	51.0
Eco-tourism Areas	4,831	5,381	6,238	1.2	11.4	15.9
Total	377,730	428,582	507,559	100.0	13.5	18.4

International Tourist Arrivals to Cambodia by Country of Residence in May 2018

(by all means of transportation)

Regions Country of Residence	2017	2018			Total	Female	Share	Change
		Purposes of Visit					2018*	2018*/17
		Holiday	Business	Others			(%)	(%)
Grand Total	368,809	354,898	52,275	11,998	419,171	188,893	100.0	13.7
Asia and the Pacific	298,373	291,958	48,627	5,532	346,117	152,941	82.6	16.0
ASEAN (Southeast Asia)	160,149	139,407	9,950	1,951	151,308	73,683	36.1	-5.5
Brunei Darussalam	81	29	1	5	35	12	0.0	-56.8
Indonesia	3,650	2,629	1,123	47	3,799	1,228	0.9	4.1
Lao PDR	41,932	32,256	15	346	32,617	21,891	7.8	-22.2
Malaysia	13,250	11,740	1,315	121	13,176	4,195	3.1	-0.6
Myanmar	1,397	1,127	240	30	1,397	624	0.3	0.0
Philippines	8,306	6,232	916	62	7,210	4,101	1.7	-13.2
Singapore	7,491	5,445	384	59	5,888	1,859	1.4	-21.4
Thailand	24,157	22,975	2,074	717	25,766	9,734	6.1	6.7
Vietnam	59,885	56,974	3,882	564	61,420	30,039	14.7	2.6
Northeast Asia	122,668	138,683	37,398	2,204	178,285	73,121	42.5	45.3
China	80,287	108,711	31,513	811	141,035	59,868	33.6	75.7
Hong Kong (China)	985	526	9	12	547	233	0.1	-44.5
Japan	12,266	9,475	2,383	499	12,357	3,921	2.9	0.7
Korea (ROK)	20,119	12,207	1,544	679	14,430	5,464	3.4	-28.3
Macau (China)	34	66	3	7	76	31	0.0	123.5
Mongolia	48	36	2	5	43	21	0.0	-10.4
Taiwan (China)	8,929	7,662	1,944	191	9,797	3,583	2.3	9.7
Southern Asia	5,400	5,268	607	102	5,977	1,727	1.4	10.7
Afghanistan	9	18	1	3	22	1	0.0	144.4
Bangladesh	197	187	35	8	230	34	0.1	16.8
Bhutan	18	5	1	6	12	3	0.0	-33.3
India	4,604	4,446	412	55	4,913	1,544	1.2	6.7
Iran	44	45	4	3	52	6	0.0	18.2
Nepal	209	158	32	4	194	63	0.0	-7.2
Pakistan	140	213	34	11	258	37	0.1	84.3
Sri Lanka	179	196	88	12	296	39	0.1	65.4
Oceania	9,297	8,326	573	1,082	9,981	4,218	2.4	7.4
Australia	7,476	7,034	484	863	8,381	3,494	2.0	12.1
Fiji	44	12	6	5	23	7	0.0	-47.7
New Zealand	1,777	1,280	83	214	1,577	717	0.4	-11.3
Other Asia & the Pacific	859	274	99	193	566	192	0.1	-34.1
Europe	43,760	40,691	2,342	2,321	45,354	24,545	10.8	3.6
Northern Europe	13,309	13,052	697	276	14,025	5,668	3.3	5.4
Denmark	755	590	35	13	638	263	0.2	-15.5
Finland	349	311	18	8	337	131	0.1	-3.4
Iceland	87	81	1	2	84	36	0.0	-3.4
Ireland	737	787	45	8	840	341	0.2	14.0
Norway	536	405	9	8	422	206	0.1	-21.3
Sweden	712	651	46	22	719	277	0.2	1.0
United Kingdom	10,133	10,227	543	215	10,985	4,414	2.6	8.4
Western Europe	18,274	16,585	1,145	1,692	19,422	11,458	4.6	6.3
Austria	411	526	24	31	581	283	0.1	41.4
Belgium	1,099	804	49	64	917	614	0.2	-16.6
France	8,665	7,439	760	1,349	9,548	5,644	2.3	10.2
Germany	5,187	5,201	159	152	5,512	3,175	1.3	6.3
Luxembourg	43	27	3	5	35	53	0.0	-18.6
Monaco	4	3	1	2	6	3	0.0	50.0
Netherlands	1,725	1,647	101	40	1,788	987	0.4	3.7
Switzerland	1,140	938	48	49	1,035	699	0.2	-9.2
Central / Eastern Europe	5,806	5,761	223	66	6,050	4,944	1.4	4.2
Bulgaria	120	116	3	2	121	97	0.0	0.8
Czech Republic	414	296	6	4	306	219	0.1	-26.1
Estonia	114	79	1	2	82	86	0.0	-28.1
Hungary	263	211	7	5	223	108	0.1	-15.2
Kazakhstan	134	101	37	3	141	72	0.0	5.2
Kyrgyzstan	8	51	2	2	55	9	0.0	587.5
Latvia	70	69	2	1	72	49	0.0	2.9
Lithuania	152	112	4	3	119	60	0.0	-21.7
Poland	742	1,069	14	6	1,089	655	0.3	46.8
Romania	181	170	5	4	179	96	0.0	-1.1
Russian Federation	3,065	2,893	111	17	3,021	3,137	0.7	-1.4
Slovakia	154	150	2	5	157	125	0.0	1.9
Ukraine	318	417	22	7	446	224	0.1	40.3
Uzbekistan	71	27	7	5	39	7	0.0	-45.1

International Tourist Arrivals to Cambodia by Country of Residence in May 2018

(by all means of transportation)

Regions Country of Residence	2017	2018			Total	Female	Share	Change
		Purposes of Visit					2018*	2018*/17
		Holiday	Business	Others			(%)	(%)
Grand Total	368,809	354,898	52,275	11,998	419,171	188,893	100.0	13.7
Southern Europe	4,565	4,119	194	65	4,378	1,909	1.0	-4.1
Croatia	48	100	2	4	106	62	0.0	120.8
Greece	106	47	6	1	54	21	0.0	-49.1
Italy	1,607	1,416	104	21	1,541	592	0.4	-4.1
Malta	16	9	4	1	14	3	0.0	-12.5
Portugal	419	334	18	3	355	162	0.1	-15.3
Serbia	50	38	2	2	42	21	0.0	-16.0
Slovenia	58	64	3	7	74	36	0.0	27.6
Spain	2,261	2,111	55	26	2,192	1,012	0.5	-3.1
East Mediterranean Europe	1,049	979	42	49	1,070	397	0.3	2.0
Israel	666	706	22	24	752	296	0.2	12.9
Turkey	383	273	20	25	318	101	0.1	-17.0
Other Europe	757	195	41	173	409	169	0.1	-46.0
Americas	25,094	21,432	1,189	4,058	26,679	11,031	6.4	6.3
North America	21,146	18,924	1,127	3,978	24,029	9,446	5.7	13.6
Canada	4,541	4,014	244	478	4,736	1,957	1.1	4.3
Mexico	670	651	5	17	673	281	0.2	0.4
United States of America	15,935	14,259	878	3,483	18,620	7,208	4.4	16.8
Central America	75	119	3	6	128	72	0.0	70.7
Costa Rica	55	35	1	3	39	23	0.0	-29.1
Honduras	9	16	1	2	19	6	0.0	111.1
Jamaica	11	68	1	1	70	43	0.0	536.4
South America	3,471	2,306	49	32	2,387	1,461	0.6	-31.2
Argentina	1,009	594	3	3	600	583	0.1	-40.5
Brazil	1,183	707	13	7	727	333	0.2	-38.5
Chile	445	435	1	1	437	213	0.1	-1.8
Colombia	318	319	22	5	346	196	0.1	8.8
Ecuador	65	32	1	4	37	22	0.0	-43.1
Peru	81	153	3	7	163	78	0.0	101.2
Uruguay	339	44	2	2	48	21	0.0	-85.8
Venezuela	31	22	4	3	29	15	0.0	-6.5
Other America	402	83	10	42	135	52	0.0	-66.4
Africa	916	598	92	56	746	324	0.2	-18.6
North Africa	93	69	6	6	81	36	0.0	-12.9
Morocco	72	40	2	1	43	25	0.0	-40.3
Sudan	9	16	3	2	21	7	0.0	133.3
Tunisia	12	13	1	3	17	4	0.0	41.7
Subsaharan Africa	676	519	81	42	642	281	0.2	-5.0
Cameroon	10	10	4	5	19	4	0.0	90.0
Congo	9	5	1	2	8	1	0.0	-11.1
Ghana	7	29	1	3	33	17	0.0	371.4
Kenya	28	28	3	8	39	24	0.0	39.3
Liberia	5	12	1	2	15	4	0.0	200.0
Nigeria	89	13	27	5	45	6	0.0	-49.4
South Africa	478	394	41	13	448	207	0.1	-6.3
Tanzania	21	2	1	1	4	1	0.0	-81.0
Uganda	12	10	1	2	13	6	0.0	8.3
Zimbabwe	17	16	1	1	18	11	0.0	5.9
Other Africa	147	10	5	8	23	7	0.0	-84.4
Middle East	666	219	25	31	275	52	0.1	-58.7
Egypt	49	36	6	1	43	7	0.0	-12.2
Iraq	22	8	2	2	12	2	0.0	-45.5
Jordan	63	34	2	1	37	3	0.0	-41.3
Kuwait	42	18	2	3	23	5	0.0	-45.2
Oman	15	5	1	2	8	1	0.0	-46.7
Palestine	17	10	2	3	15	2	0.0	-11.8
Qatar	15	4	2	2	8	2	0.0	-46.7
Saudi Arabia	15	9	1	3	13	2	0.0	-13.3
Syria	30	41	1	2	44	8	0.0	46.7
United Arab Emirates	15	7	3	5	15	2	0.0	0.0
Yemen	255	42	1	1	44	14	0.0	-82.7
Other Middle East	128	5	2	6	13	4	0.0	-89.8