



KINGDOM OF CAMBODIA  
NATION RELIGION KING



# TOURISM STATISTICS REPORT

# September 2018

**MINISTRY OF TOURISM**

Statistics and Tourism Information Department

No. A3, Street 169, Sangkat Veal Vong, Khan 7 Makara, Phnom Penh, Cambodia.

Fax: +855 23 885003

E-mail: [kong@tourism.gov.kh](mailto:kong@tourism.gov.kh)

Web site: [www.tourism.gov.kh](http://www.tourism.gov.kh)

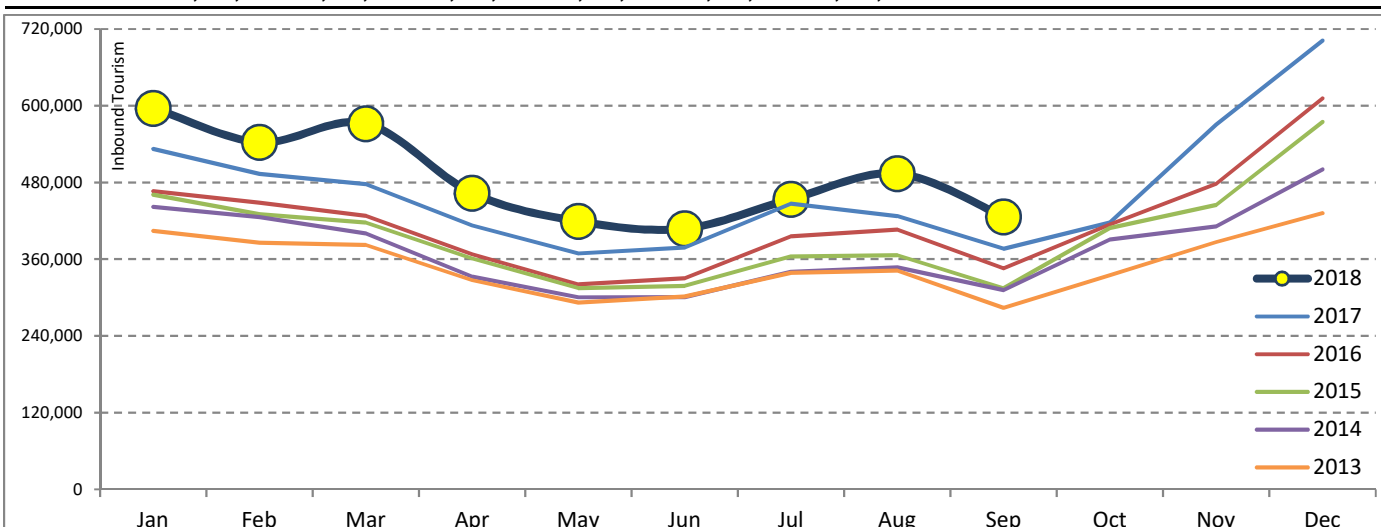
## Tourism Highlights

### Int'l Tourist Arrivals, Average Length of Stays, Hotel Occupancy & Int'l Tourism Receipts 1993 - 2017

Years	Int'l Tourist Arrivals		Average Length	Hotel Occupancy	Int'l Tourism Receipts
	Number	Change (%)	of Stays (Days)	(%)	(Million US\$)
1993	118,183	-	N/A	N/A	N/A
1994	176,617	49.4	N/A	N/A	N/A
1995	219,680	24.4	8.00	37.0	100
1996	260,489	18.6	7.50	40.0	118
1997	218,843	-16.0	6.40	30.0	103
1998	286,524	30.9	5.20	40.0	166
1999	367,743	28.3	5.50	44.0	190
2000	466,365	26.8	5.50	45.0	228
2001	604,919	29.7	5.50	48.0	304
2002	786,524	30.0	5.80	50.0	379
2003	701,014	-10.9	5.50	50.0	347
2004	1,055,202	50.5	6.30	52.0	578
2005	1,421,615	34.7	6.30	52.0	832
2006	1,700,041	19.6	6.50	54.8	1,049
2007	2,015,128	18.5	6.50	54.8	1,400
2008	2,125,465	5.5	6.65	62.7	1,595
2009	2,161,577	1.7	6.45	63.6	1,561
2010	2,508,289	16.0	6.45	65.7	1,786
2011	2,881,862	14.9	6.50	66.2	1,912
2012	3,584,307	24.4	6.30	68.5	2,210
2013	4,210,165	17.5	6.75	69.5	2,547
2014	4,502,775	7.0	6.50	67.6	2,736
2015	4,775,231	6.1	6.80	70.2	3,012
2016	5,011,712	5.0	6.30	68.9	3,212
2017	5,602,157	11.8	6.60	71.3	3,638

### International Tourist Arrivals to Cambodia

Months	2013	2014	2015	2016	2017	2018	Change (%)				
							14/13	15/13	16/15	17/16	18*/17
<b>Q1</b>	<b>1,172,072</b>	<b>1,267,922</b>	<b>1,307,836</b>	<b>1,342,477</b>	<b>1,502,896</b>	<b>1,711,253</b>	<b>8.2</b>	<b>3.1</b>	<b>2.6</b>	<b>11.9</b>	<b>13.9</b>
Jan	404,106	442,045	460,577	466,086	532,206	596,241	9.4	4.2	1.2	14.2	12.0
Feb	385,760	425,801	430,207	448,468	493,316	542,937	10.4	1.0	4.2	10.0	10.1
Mar	382,206	400,076	417,052	427,923	477,374	572,075	4.7	4.2	2.6	11.6	19.8
<b>Q2</b>	<b>920,527</b>	<b>933,446</b>	<b>994,154</b>	<b>1,018,455</b>	<b>1,159,783</b>	<b>1,290,407</b>	<b>1.4</b>	<b>6.5</b>	<b>2.4</b>	<b>13.9</b>	<b>11.3</b>
Apr	327,000	332,690	361,139	367,684	412,925	463,423	1.7	8.6	1.8	12.3	12.2
May	292,115	300,302	314,748	320,601	368,809	419,171	2.8	4.8	1.9	15.0	13.7
Jun	301,412	300,454	318,267	330,170	378,049	407,813	-0.3	5.9	3.7	14.5	7.9
<b>Q3</b>	<b>964,612</b>	<b>998,690</b>	<b>1,044,880</b>	<b>1,147,483</b>	<b>1,250,082</b>	<b>1,374,373</b>	<b>3.5</b>	<b>4.6</b>	<b>9.8</b>	<b>8.9</b>	<b>9.9</b>
Jul	338,761	340,091	364,325	395,761	446,627	454,056	0.4	7.1	8.6	12.9	1.7
Aug	342,064	347,211	366,096	406,214	427,224	494,043	1.5	5.4	11.0	5.2	15.6
Sep	283,787	311,388	314,459	345,508	376,231	426,274	9.7	1.0	9.9	8.9	13.3
<b>Q4</b>	<b>1,152,954</b>	<b>1,302,717</b>	<b>1,428,361</b>	<b>1,503,297</b>	<b>1,689,396</b>	<b>0</b>	<b>13.0</b>	<b>9.6</b>	<b>5.2</b>	<b>12.4</b>	
Oct	334,410	390,637	408,922	414,077	417,039		16.8	4.7	1.3	0.7	
Nov	386,737	411,501	444,640	477,686	570,471		6.4	8.1	7.4	19.4	
Dec	431,807	500,579	574,799	611,534	701,886		15.9	14.8	6.4	14.8	
<b>Total</b>	<b>4,210,165</b>	<b>4,502,775</b>	<b>4,775,231</b>	<b>5,011,712</b>	<b>5,602,157</b>	<b>4,376,033</b>	<b>7.0</b>	<b>6.1</b>	<b>5.0</b>	<b>11.8</b>	<b>11.8</b>



Source: Tourism Statistics Department, MOT

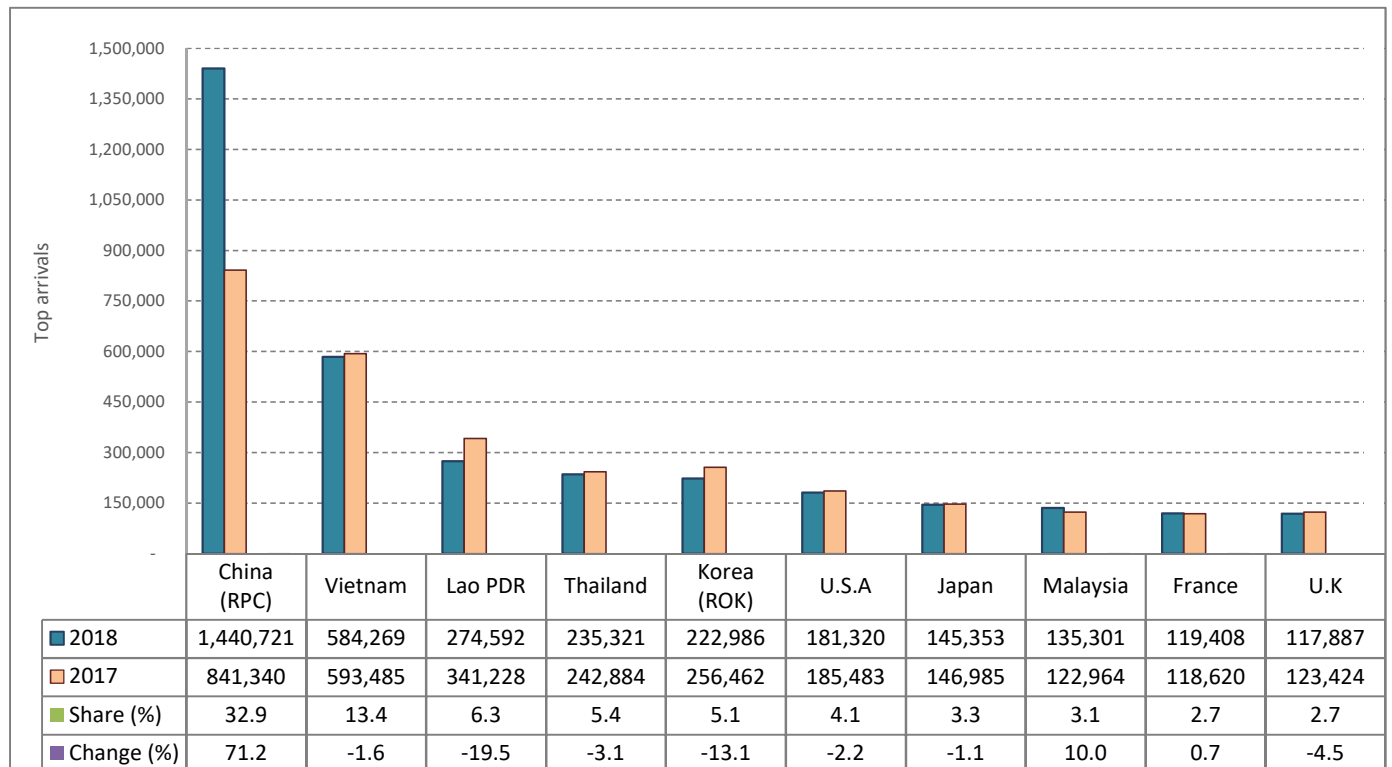
# CAMBODIA: TOURISM STATISTICS REPORT IN THE FIRST NINE MONTHS 2018

## I. INBOUND TOURISM

### 1. International tourist arrivals in January - September 2018

	Inbound tourism			Share (%) 2018*	Change (%)	
	2016	2017	2018		17/16	2018*/17
<b>Air</b>	<b>1,906,976</b>	<b>2,383,409</b>	<b>2,958,921</b>	<b>67.6</b>	<b>25.0</b>	<b>24.1</b>
Phnom Penh Int'l Airport (PNH)	834,186	1,026,720	1,391,759	31.8	23.1	35.6
Siem Reap Int'l Airport (REP)	1,057,465	1,298,351	1,432,499	32.7	22.8	10.3
Kong Keng (KOS)	15,325	58,338	134,663	3.1	280.7	130.8
<b>Land and Waterways</b>	<b>1,601,439</b>	<b>1,529,352</b>	<b>1,417,112</b>	<b>32.4</b>	<b>-4.5</b>	<b>-7.3</b>
Land	1,486,031	1,421,083	1,315,090	30.1	-4.4	-7.5
Waterways	115,408	108,269	102,022	2.3	-6.2	-5.8
<b>Total</b>	<b>3,508,415</b>	<b>3,912,761</b>	<b>4,376,033</b>	<b>100.0</b>	<b>11.5</b>	<b>11.8</b>

### 2. Top ten markets arrivals in January - September 2018



## II. OUTBOUND TOURISM

### Outbound tourism in January - September 2018

	Outbound tourism			Change (%)	
	2016	2017	2018	17/16	2018*/17
Cambodian Outbound Tourists	1,059,521	1,319,472	1,459,507	24.5	10.6
International Tourists Departure	3,295,314	3,751,590	4,227,150	13.8	12.7

## III. INTERNAL TOURISM

### Foreign visitor arrivals to the regions in January - September 2018

	Arrivals			Share (%) 2018*	Change (%)	
	2016	2017	2018		17/16	2018*/17
Phnom Penh & Surrounding	1,940,183	2,159,489	2,474,454	48.1	11.3	14.6
Siem Reap Angkor	1,568,592	1,753,272	1,901,569	37.0	11.8	8.5
Coastal Areas	479,228	554,965	711,735	13.8	15.8	28.2
Eco-tourism Areas	48,099	55,082	58,052	1.1	14.5	5.4
<b>Total</b>	<b>4,036,102</b>	<b>4,522,808</b>	<b>5,145,810</b>	<b>100.0</b>	<b>12.1</b>	<b>13.8</b>

## International Tourist Arrivals to Cambodia by Country of Residence in January - September 2018

(by all means of transportation)

Regions Country of Residence	2017	2018			Total	Female	Share	Change
		Purposes of Visit					2018*	2018*/17
		Holiday	Business	Others			(%)	(%)
<b>Grand Total</b>	<b>3,912,761</b>	<b>3,780,023</b>	<b>465,047</b>	<b>130,963</b>	<b>4,376,033</b>	<b>1,947,680</b>	<b>100.0</b>	<b>11.8</b>
<b>Asia and the Pacific</b>	<b>2,995,331</b>	<b>2,986,224</b>	<b>432,760</b>	<b>75,156</b>	<b>3,494,140</b>	<b>1,549,492</b>	<b>79.8</b>	<b>16.7</b>
<b>ASEAN (Southeast Asia)</b>	<b>1,473,292</b>	<b>1,273,883</b>	<b>87,256</b>	<b>39,096</b>	<b>1,400,235</b>	<b>650,491</b>	<b>32.0</b>	<b>-5.0</b>
Brunei Darussalam	684	524	15	42	581	241	0.0	-15.1
Indonesia	34,287	24,955	11,265	2,116	38,336	11,534	0.9	11.8
Lao PDR	341,228	267,949	176	6,467	274,592	169,531	6.3	-19.5
Malaysia	122,964	121,390	10,745	3,166	135,301	44,523	3.1	10.0
Myanmar	12,795	11,397	2,196	962	14,555	6,196	0.3	13.8
Philippines	70,650	51,372	7,581	2,387	61,340	33,613	1.4	-13.2
Singapore	54,315	50,899	3,208	1,833	55,940	17,804	1.3	3.0
Thailand	242,884	206,698	17,476	11,147	235,321	88,641	5.4	-3.1
Vietnam	593,485	538,699	34,594	10,976	584,269	278,408	13.4	-1.6
<b>Northeast Asia</b>	<b>1,343,256</b>	<b>1,563,628</b>	<b>334,486</b>	<b>19,675</b>	<b>1,917,789</b>	<b>831,804</b>	<b>43.8</b>	<b>42.8</b>
China	841,340	1,148,208	285,586	6,927	1,440,721	634,833	32.9	71.2
Hong Kong (China)	9,732	7,547	399	148	8,094	3,767	0.2	-16.8
Japan	146,985	122,090	19,091	4,172	145,353	52,553	3.3	-1.1
Korea (ROK)	256,462	204,413	13,180	5,393	222,986	100,554	5.1	-13.1
Macau (China)	314	381	18	53	452	133	0.0	43.9
Mongolia	476	525	27	32	584	299	0.0	22.7
Taiwan (China)	87,947	80,464	16,185	2,950	99,599	39,665	2.3	13.2
<b>Southern Asia</b>	<b>48,759</b>	<b>48,689</b>	<b>5,257</b>	<b>858</b>	<b>54,804</b>	<b>16,071</b>	<b>1.3</b>	<b>12.4</b>
Afghanistan	164	156	15	26	197	35	0.0	20.1
Bangladesh	1,489	1,756	315	86	2,157	280	0.0	44.9
Bhutan	131	75	10	53	138	84	0.0	5.3
India	40,946	40,245	3,580	395	44,220	13,937	1.0	8.0
Iran	637	785	46	42	873	290	0.0	37.0
Nepal	2,092	1,742	292	101	2,135	566	0.0	2.1
Pakistan	1,431	1,984	387	89	2,460	352	0.1	71.9
Sri Lanka	1,869	1,946	612	66	2,624	527	0.1	40.4
<b>Oceania</b>	<b>122,013</b>	<b>95,189</b>	<b>4,859</b>	<b>12,582</b>	<b>112,630</b>	<b>47,931</b>	<b>2.6</b>	<b>-7.7</b>
Australia	101,094	80,315	4,159	9,791	94,265	39,749	2.2	-6.8
Fiji	253	106	39	33	178	55	0.0	-29.6
New Zealand	20,666	14,768	661	2,758	18,187	8,127	0.4	-12.0
Other Asia & the Pacific	8,011	4,835	902	2,945	8,682	3,195	0.2	8.4
<b>Europe</b>	<b>618,528</b>	<b>553,937</b>	<b>20,890</b>	<b>23,305</b>	<b>598,132</b>	<b>273,283</b>	<b>13.7</b>	<b>-3.3</b>
<b>Northern Europe</b>	<b>170,761</b>	<b>153,480</b>	<b>6,623</b>	<b>2,368</b>	<b>162,471</b>	<b>68,411</b>	<b>3.7</b>	<b>-4.9</b>
Denmark	10,371	9,455	457	167	10,079	4,499	0.2	-2.8
Finland	4,983	5,233	182	148	5,563	2,349	0.1	11.6
Iceland	771	572	12	21	605	192	0.0	-21.5
Ireland	9,426	8,965	377	102	9,444	4,273	0.2	0.2
Norway	8,626	7,111	169	130	7,410	3,196	0.2	-14.1
Sweden	13,160	10,748	426	309	11,483	4,607	0.3	-12.7
United Kingdom	123,424	111,396	5,000	1,491	117,887	49,295	2.7	-4.5
<b>Western Europe</b>	<b>269,816</b>	<b>221,013</b>	<b>9,771</b>	<b>17,268</b>	<b>248,052</b>	<b>112,010</b>	<b>5.7</b>	<b>-8.1</b>
Austria	8,468	7,814	159	281	8,254	3,682	0.2	-2.5
Belgium	15,880	12,511	481	519	13,511	6,252	0.3	-14.9
France	118,620	99,285	6,090	14,033	119,408	54,316	2.7	0.7
Germany	85,223	67,405	1,617	1,299	70,321	31,177	1.6	-17.5
Luxembourg	683	497	20	25	542	262	0.0	-20.6
Monaco	69	38	10	16	64	25	0.0	-7.2
Netherlands	23,889	20,125	840	395	21,360	9,675	0.5	-10.6
Switzerland	16,984	13,338	554	700	14,592	6,621	0.3	-14.1
<b>Central / Eastern Europe</b>	<b>84,991</b>	<b>91,435</b>	<b>2,120</b>	<b>703</b>	<b>94,258</b>	<b>50,005</b>	<b>2.2</b>	<b>10.9</b>
Bulgaria	1,981	2,155	37	24	2,216	1,100	0.1	11.9
Czech Republic	6,154	5,256	87	44	5,387	2,524	0.1	-12.5
Estonia	1,845	2,535	144	24	2,703	1,030	0.1	46.5
Hungary	4,303	3,722	66	28	3,816	1,783	0.1	-11.3
Kazakhstan	1,546	1,284	214	33	1,531	795	0.0	-1.0
Kyrgyzstan	158	196	24	18	238	99	0.0	50.6
Latvia	916	1,067	26	21	1,114	552	0.0	21.6
Lithuania	1,995	1,537	74	35	1,646	838	0.0	-17.5
Poland	13,050	14,073	158	64	14,295	7,245	0.3	9.5
Romania	2,380	2,584	56	53	2,693	1,367	0.1	13.2
Russian Federation	43,162	49,097	931	230	50,258	28,596	1.1	16.4
Slovakia	2,576	2,598	44	48	2,690	1,292	0.1	4.4
Ukraine	4,465	5,011	168	39	5,218	2,648	0.1	16.9
Uzbekistan	460	320	91	42	453	136	0.0	-1.5

## International Tourist Arrivals to Cambodia by Country of Residence in January - September 2018

(by all means of transportation)

Regions Country of Residence	2017	2018			Total	Female	Share	Change
		Purposes of Visit					2018*	2018*/17
		Holiday	Business	Others			(%)	(%)
<b>Grand Total</b>	<b>3,912,761</b>	<b>3,780,023</b>	<b>465,047</b>	<b>130,963</b>	<b>4,376,033</b>	<b>1,947,680</b>	<b>100.0</b>	<b>11.8</b>
<b>Southern Europe</b>	<b>70,706</b>	<b>69,104</b>	<b>1,607</b>	<b>569</b>	<b>71,280</b>	<b>32,876</b>	<b>1.6</b>	<b>0.8</b>
Croatia	1,251	1,648	37	29	1,714	809	0.0	37.0
Greece	1,362	1,452	41	25	1,518	668	0.0	11.5
Italy	28,505	26,088	889	247	27,224	11,865	0.6	-4.5
Malta	373	323	18	13	354	171	0.0	-5.1
Portugal	5,482	4,798	112	33	4,943	2,408	0.1	-9.8
Serbia	840	910	23	20	953	482	0.0	13.5
Slovenia	1,097	1,064	35	32	1,131	443	0.0	3.1
Spain	31,796	32,821	452	170	33,443	16,030	0.8	5.2
<b>East Mediterranean Europe</b>	<b>16,087</b>	<b>16,087</b>	<b>353</b>	<b>475</b>	<b>16,915</b>	<b>7,753</b>	<b>0.4</b>	<b>5.1</b>
Israel	10,038	10,509	131	138	10,778	5,056	0.2	7.4
Turkey	6,049	5,578	222	337	6,137	2,697	0.1	1.5
Other Europe	6,167	2,818	416	1,922	5,156	2,228	0.1	-16.4
<b>Americas</b>	<b>285,721</b>	<b>228,120</b>	<b>10,202</b>	<b>31,817</b>	<b>270,139</b>	<b>119,907</b>	<b>6.2</b>	<b>-5.5</b>
<b>North America</b>	<b>241,601</b>	<b>192,483</b>	<b>9,307</b>	<b>30,678</b>	<b>232,468</b>	<b>100,941</b>	<b>5.3</b>	<b>-3.8</b>
Canada	49,721	39,143	1,938	3,787	44,868	20,261	1.0	-9.8
Mexico	6,397	6,128	56	96	6,280	3,047	0.1	-1.8
United States of America	185,483	147,212	7,313	26,795	181,320	77,633	4.1	-2.2
<b>Central America</b>	<b>922</b>	<b>1,380</b>	<b>133</b>	<b>52</b>	<b>1,565</b>	<b>602</b>	<b>0.0</b>	<b>69.7</b>
Costa Rica	665	1,066	104	24	1,194	451	0.0	79.5
Honduras	134	117	14	14	145	47	0.0	8.2
Jamaica	123	197	15	14	226	104	0.0	83.7
<b>South America</b>	<b>39,749</b>	<b>32,832</b>	<b>622</b>	<b>489</b>	<b>33,943</b>	<b>17,510</b>	<b>0.8</b>	<b>-14.6</b>
Argentina	14,073	9,245	29	71	9,345	5,067	0.2	-33.6
Brazil	12,988	9,566	190	256	10,012	4,882	0.2	-22.9
Chile	5,229	4,758	101	37	4,896	2,402	0.1	-6.4
Colombia	3,545	6,024	237	46	6,307	3,424	0.1	77.9
Ecuador	650	536	10	19	565	302	0.0	-13.1
Peru	1,210	1,407	23	30	1,460	717	0.0	20.7
Uruguay	1,509	1,088	11	16	1,115	606	0.0	-26.1
Venezuela	545	208	21	14	243	110	0.0	-55.4
Other America	3,449	1,425	140	598	2,163	854	0.0	-37.3
<b>Africa</b>	<b>8,897</b>	<b>8,504</b>	<b>896</b>	<b>427</b>	<b>9,827</b>	<b>4,252</b>	<b>0.2</b>	<b>10.5</b>
<b>North Africa</b>	<b>833</b>	<b>988</b>	<b>55</b>	<b>67</b>	<b>1,110</b>	<b>454</b>	<b>0.0</b>	<b>33.3</b>
Morocco	532	652	24	26	702	323	0.0	32.0
Sudan	97	121	20	20	161	33	0.0	66.0
Tunisia	204	215	11	21	247	98	0.0	21.1
<b>Subsaharan Africa</b>	<b>6,975</b>	<b>7,218</b>	<b>803</b>	<b>293</b>	<b>8,314</b>	<b>3,650</b>	<b>0.2</b>	<b>19.2</b>
Cameroon	95	157	24	22	203	49	0.0	113.7
Congo	70	214	18	13	245	86	0.0	250.0
Ghana	254	332	20	17	369	140	0.0	45.3
Kenya	280	295	33	46	374	192	0.0	33.6
Liberia	43	1,197	53	83	1,333	516	0.0	3000.0
Nigeria	1,136	138	236	27	401	90	0.0	-64.7
South Africa	4,703	4,645	382	43	5,070	2,442	0.1	7.8
Tanzania	186	60	10	14	84	24	0.0	-54.8
Uganda	102	87	11	11	109	61	0.0	6.9
Zimbabwe	106	93	16	17	126	50	0.0	18.9
Other Africa	1,089	298	38	67	403	148	0.0	-63.0
<b>Middle East</b>	<b>4,284</b>	<b>3,238</b>	<b>299</b>	<b>258</b>	<b>3,795</b>	<b>746</b>	<b>0.1</b>	<b>-11.4</b>
Egypt	625	531	62	21	614	138	0.0	-1.8
Iraq	208	442	43	25	510	68	0.0	145.2
Jordan	457	317	38	13	368	88	0.0	-19.5
Kuwait	437	317	19	28	364	60	0.0	-16.7
Oman	183	163	11	26	200	33	0.0	9.3
Palestine	96	72	22	16	110	16	0.0	14.6
Qatar	86	52	11	13	76	13	0.0	-11.6
Saudi Arabia	202	201	11	23	235	24	0.0	16.3
Syria	438	318	15	16	349	48	0.0	-20.3
United Arab Emirates	184	129	26	19	174	32	0.0	-5.4
Yemen	507	456	15	11	482	124	0.0	-4.9
Other Middle East	861	240	26	47	313	102	0.0	-63.6

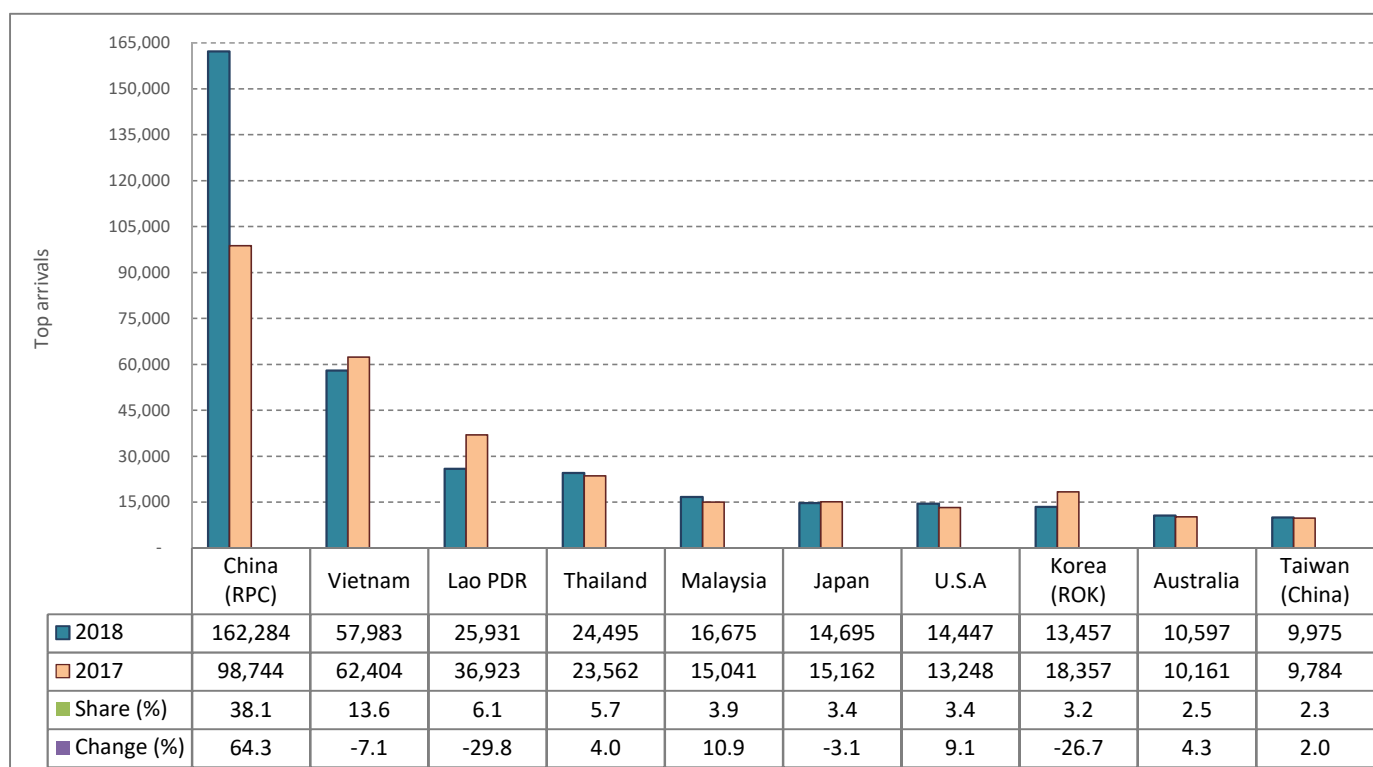
# CAMBODIA: TOURISM STATISTICS REPORT IN SEPTEMBER 2018

## I. INBOUND TOURISM

### 1. International tourist arrivals in September 2018

	Inbound tourism			Share (%) 2018*	Change (%)	
	2016	2017	2018		17/16	2018*/17
<b>Air</b>	<b>182,939</b>	<b>232,453</b>	<b>297,105</b>	<b>69.7</b>	<b>27.1</b>	<b>27.8</b>
Phnom Penh Int'l Airport (PNH)	86,681	110,827	147,515	34.6	27.9	33.1
Siem Reap Int'l Airport (REP)	92,257	115,281	125,141	29.4	25.0	8.6
Kong Keng (KOS)	4,001	6,345	24,449	5.7	58.6	285.3
<b>Land and Waterways</b>	<b>162,569</b>	<b>143,778</b>	<b>129,169</b>	<b>30.3</b>	<b>-11.6</b>	<b>-10.2</b>
Land	155,104	138,323	119,637	28.1	-10.8	-13.5
Waterways	7,465	5,455	9,532	2.2	-26.9	74.7
<b>Total</b>	<b>345,508</b>	<b>376,231</b>	<b>426,274</b>	<b>100.0</b>	<b>8.9</b>	<b>13.3</b>

### 2. Top ten markets arrivals in September 2018



## II. OUTBOUND TOURISM

### Outbound tourism in September 2018

	Outbound tourism			Change (%)	
	2016	2017	2018	17/16	2018*/17
Cambodian Outbound Tourists	121,933	166,372	173,111	36.4	4.1
International Tourists Departure	325,786	357,870	413,947	9.8	15.7

## III. INTERNAL TOURISM

### Foreign visitor arrivals to the regions in September 2018

	Arrivals			Share (%) 2018*	Change (%)	
	2016	2017	2018		17/16	2018*/17
Phnom Penh & Surrounding	214,324	231,390	269,409	54.7	8.0	16.4
Siem Reap Angkor	131,184	144,841	156,865	31.9	10.4	8.3
Coastal Areas	36,170	62,780	60,936	12.4	73.6	-2.9
Eco-tourism Areas	3,834	6,539	5,137	1.0	70.6	-21.4
<b>Total</b>	<b>385,512</b>	<b>445,550</b>	<b>492,347</b>	<b>100.0</b>	<b>15.6</b>	<b>10.5</b>

Source: Tourism Statistics Department, MOT.

## International Tourist Arrivals to Cambodia by Country of Residence in September 2018

(by all means of transportation)

Regions Country of Residence	2017	2018			Total	Female	Share	Change
		Purposes of Visit					2018*	2018*/17
		Holiday	Business	Others			(%)	(%)
<b>Grand Total</b>	<b>376,231</b>	<b>351,141</b>	<b>63,527</b>	<b>11,606</b>	<b>426,274</b>	<b>181,993</b>	<b>100.0</b>	<b>13.3</b>
<b>Asia and the Pacific</b>	<b>315,773</b>	<b>296,560</b>	<b>59,929</b>	<b>7,323</b>	<b>363,812</b>	<b>155,446</b>	<b>85.3</b>	<b>15.2</b>
<b>ASEAN (Southeast Asia)</b>	<b>154,983</b>	<b>129,927</b>	<b>9,709</b>	<b>4,334</b>	<b>143,970</b>	<b>66,546</b>	<b>33.8</b>	<b>-7.1</b>
Brunei Darussalam	91	56	1	2	59	20	0.0	-35.2
Indonesia	3,433	2,746	1,512	158	4,416	1,462	1.0	28.6
Lao PDR	36,923	24,748	14	1,169	25,931	15,977	6.1	-29.8
Malaysia	15,041	14,763	1,302	610	16,675	5,923	3.9	10.9
Myanmar	1,394	858	274	119	1,251	513	0.3	-10.3
Philippines	6,557	4,730	736	143	5,609	3,338	1.3	-14.5
Singapore	5,578	7,047	353	151	7,551	2,751	1.8	35.4
Thailand	23,562	21,645	1,852	998	24,495	9,834	5.7	4.0
Vietnam	62,404	53,334	3,665	984	57,983	26,728	13.6	-7.1
<b>Northeast Asia</b>	<b>142,542</b>	<b>150,170</b>	<b>48,974</b>	<b>1,775</b>	<b>200,919</b>	<b>81,518</b>	<b>47.1</b>	<b>41.0</b>
China	98,744	117,980	43,449	855	162,284	67,142	38.1	64.3
Hong Kong (China)	450	385	11	17	413	174	0.1	-8.2
Japan	15,162	12,175	2,261	259	14,695	5,187	3.4	-3.1
Korea (ROK)	18,357	11,601	1,387	469	13,457	5,174	3.2	-26.7
Macau (China)	28	42	2	5	49	17	0.0	75.0
Mongolia	17	43	2	1	46	20	0.0	170.6
Taiwan (China)	9,784	7,944	1,862	169	9,975	3,804	2.3	2.0
<b>Southern Asia</b>	<b>5,285</b>	<b>5,620</b>	<b>635</b>	<b>60</b>	<b>6,315</b>	<b>1,665</b>	<b>1.5</b>	<b>19.5</b>
Afghanistan	38	4	2	1	7	1	0.0	-81.6
Bangladesh	216	222	32	7	261	35	0.1	20.8
Bhutan	11	5	1	1	7	2	0.0	-36.4
India	4,401	4,518	444	27	4,989	1,441	1.2	13.4
Iran	57	68	3	1	72	24	0.0	26.3
Nepal	191	261	34	10	305	72	0.1	59.7
Pakistan	132	277	46	8	331	43	0.1	150.8
Sri Lanka	239	265	73	5	343	47	0.1	43.5
<b>Oceania</b>	<b>12,045</b>	<b>10,708</b>	<b>584</b>	<b>1,090</b>	<b>12,382</b>	<b>5,641</b>	<b>2.9</b>	<b>2.8</b>
Australia	10,161	9,178	518	901	10,597	4,790	2.5	4.3
Fiji	23	6	8	2	16	6	0.0	-30.4
New Zealand	1,861	1,524	58	187	1,769	845	0.4	-4.9
Other Asia & the Pacific	918	135	27	64	226	76	0.1	-75.4
<b>Europe</b>	<b>39,770</b>	<b>36,989</b>	<b>2,463</b>	<b>1,766</b>	<b>41,218</b>	<b>17,648</b>	<b>9.7</b>	<b>3.6</b>
<b>Northern Europe</b>	<b>10,814</b>	<b>10,564</b>	<b>797</b>	<b>199</b>	<b>11,560</b>	<b>4,575</b>	<b>2.7</b>	<b>6.9</b>
Denmark	464	468	42	16	526	228	0.1	13.4
Finland	248	299	28	30	357	151	0.1	44.0
Iceland	30	25	1	3	29	8	0.0	-3.3
Ireland	632	690	42	8	740	322	0.2	17.1
Norway	403	260	21	10	291	108	0.1	-27.8
Sweden	479	487	62	20	569	229	0.1	18.8
United Kingdom	8,558	8,335	601	112	9,048	3,529	2.1	5.7
<b>Western Europe</b>	<b>15,896</b>	<b>14,202</b>	<b>1,195</b>	<b>1,406</b>	<b>16,803</b>	<b>6,906</b>	<b>3.9</b>	<b>5.7</b>
Austria	414	469	16	10	495	216	0.1	19.6
Belgium	1,010	811	59	32	902	400	0.2	-10.7
France	7,370	5,996	744	1,168	7,908	3,107	1.9	7.3
Germany	4,694	4,757	203	99	5,059	2,119	1.2	7.8
Luxembourg	44	24	2	2	28	10	0.0	-36.4
Monaco	5	2	1	1	4	1	0.0	-20.0
Netherlands	1,426	1,374	112	38	1,524	639	0.4	6.9
Switzerland	933	769	58	56	883	414	0.2	-5.4
<b>Central / Eastern Europe</b>	<b>4,874</b>	<b>4,584</b>	<b>224</b>	<b>63</b>	<b>4,871</b>	<b>2,522</b>	<b>1.1</b>	<b>-0.1</b>
Bulgaria	102	92	3	2	97	47	0.0	-4.9
Czech Republic	302	193	14	6	213	82	0.0	-29.5
Estonia	91	77	4	3	84	42	0.0	-7.7
Hungary	143	107	7	2	116	56	0.0	-18.9
Kazakhstan	96	65	20	3	88	57	0.0	-8.3
Kyrgyzstan	4	18	2	2	22	12	0.0	450.0
Latvia	61	54	4	3	61	28	0.0	0.0
Lithuania	71	62	3	2	67	30	0.0	-5.6
Poland	709	907	14	5	926	475	0.2	30.6
Romania	161	240	5	7	252	112	0.1	56.5
Russian Federation	2,702	2,286	99	21	2,406	1,307	0.6	-11.0
Slovakia	124	92	7	5	104	50	0.0	-16.1
Ukraine	232	372	32	1	405	211	0.1	74.6
Uzbekistan	76	19	10	1	30	13	0.0	-60.5

## International Tourist Arrivals to Cambodia by Country of Residence in September 2018

(by all means of transportation)

Regions Country of Residence	2017	2018			Total	Female	Share	Change
		Purposes of Visit					2018*	2018*/17
		Holiday	Business	Others			(%)	(%)
<b>Grand Total</b>	<b>376,231</b>	<b>351,141</b>	<b>63,527</b>	<b>11,606</b>	<b>426,274</b>	<b>181,993</b>	<b>100.0</b>	<b>13.3</b>
<b>Southern Europe</b>	<b>5,918</b>	<b>5,943</b>	<b>190</b>	<b>50</b>	<b>6,183</b>	<b>2,835</b>	<b>1.5</b>	<b>4.5</b>
Croatia	84	132	4	1	137	70	0.0	63.1
Greece	79	106	2	3	111	58	0.0	40.5
Italy	1,503	1,316	111	25	1,452	561	0.3	-3.4
Malta	35	48	1	1	50	26	0.0	42.9
Portugal	432	352	16	1	369	180	0.1	-14.6
Serbia	36	62	4	2	68	24	0.0	88.9
Slovenia	70	72	5	3	80	35	0.0	14.3
Spain	3,679	3,855	47	14	3,916	1,881	0.9	6.4
<b>East Mediterranean Europe</b>	<b>1,260</b>	<b>1,665</b>	<b>45</b>	<b>30</b>	<b>1,740</b>	<b>789</b>	<b>0.4</b>	<b>38.1</b>
Israel	803	1,262	19	15	1,296	607	0.3	61.4
Turkey	457	403	26	15	444	182	0.1	-2.8
Other Europe	1,008	31	12	18	61	21	0.0	-93.9
<b>Americas</b>	<b>19,511</b>	<b>16,624</b>	<b>1,012</b>	<b>2,449</b>	<b>20,085</b>	<b>8,513</b>	<b>4.7</b>	<b>2.9</b>
<b>North America</b>	<b>16,991</b>	<b>14,744</b>	<b>960</b>	<b>2,371</b>	<b>18,075</b>	<b>7,527</b>	<b>4.2</b>	<b>6.4</b>
Canada	3,121	2,521	188	247	2,956	1,249	0.7	-5.3
Mexico	622	665	6	1	672	360	0.2	8.0
United States of America	13,248	11,558	766	2,123	14,447	5,918	3.4	9.1
<b>Central America</b>	<b>91</b>	<b>68</b>	<b>3</b>	<b>4</b>	<b>75</b>	<b>38</b>	<b>0.0</b>	<b>-17.6</b>
Costa Rica	69	55	1	2	58	29	0.0	-15.9
Honduras	11	7	1	1	9	4	0.0	-18.2
Jamaica	11	6	1	1	8	5	0.0	-27.3
<b>South America</b>	<b>1,996</b>	<b>1,801</b>	<b>44</b>	<b>66</b>	<b>1,911</b>	<b>940</b>	<b>0.4</b>	<b>-4.3</b>
Argentina	558	357	5	3	365	177	0.1	-34.6
Brazil	568	572	16	49	637	311	0.1	12.1
Chile	277	343	9	5	357	180	0.1	28.9
Colombia	312	329	9	1	339	173	0.1	8.7
Ecuador	59	45	1	1	47	23	0.0	-20.3
Peru	144	101	1	4	106	52	0.0	-26.4
Uruguay	41	41	1	2	44	19	0.0	7.3
Venezuela	37	13	2	1	16	5	0.0	-56.8
Other America	433	11	5	8	24	8	0.0	-94.5
<b>Africa</b>	<b>799</b>	<b>661</b>	<b>90</b>	<b>32</b>	<b>783</b>	<b>317</b>	<b>0.2</b>	<b>-2.0</b>
<b>North Africa</b>	<b>87</b>	<b>96</b>	<b>8</b>	<b>6</b>	<b>110</b>	<b>36</b>	<b>0.0</b>	<b>26.4</b>
Morocco	67	69	5	3	77	30	0.0	14.9
Sudan	5	14	2	1	17	2	0.0	240.0
Tunisia	15	13	1	2	16	4	0.0	6.7
<b>Subsaharan Africa</b>	<b>623</b>	<b>558</b>	<b>80</b>	<b>22</b>	<b>660</b>	<b>278</b>	<b>0.2</b>	<b>5.9</b>
Cameroon	16	11	3	2	16	6	0.0	0.0
Congo	3	17	1	1	19	7	0.0	533.3
Ghana	10	13	3	2	18	2	0.0	80.0
Kenya	46	18	2	4	24	15	0.0	-47.8
Liberia	5	19	1	1	21	5	0.0	320.0
Nigeria	33	7	21	2	30	2	0.0	-9.1
South Africa	491	440	43	6	489	218	0.1	-0.4
Tanzania	3	2	1	1	4	1	0.0	33.3
Uganda	8	21	1	1	23	16	0.0	187.5
Zimbabwe	8	10	4	2	16	6	0.0	100.0
Other Africa	89	7	2	4	13	3	0.0	-85.4
<b>Middle East</b>	<b>378</b>	<b>307</b>	<b>33</b>	<b>36</b>	<b>376</b>	<b>69</b>	<b>0.1</b>	<b>-0.5</b>
Egypt	56	75	11	3	89	20	0.0	58.9
Iraq	12	19	3	5	27	1	0.0	125.0
Jordan	53	19	7	2	28	7	0.0	-47.2
Kuwait	24	14	2	3	19	4	0.0	-20.8
Oman	23	37	1	11	49	4	0.0	113.0
Palestine	3	11	1	2	14	3	0.0	366.7
Qatar	3	3	1	1	5	1	0.0	66.7
Saudi Arabia	16	25	1	2	28	1	0.0	75.0
Syria	62	32	1	1	34	8	0.0	-45.2
United Arab Emirates	15	6	2	2	10	1	0.0	-33.3
Yemen	39	62	1	1	64	17	0.0	64.1
Other Middle East	72	4	2	3	9	2	0.0	-87.5