



KINGDOM OF CAMBODIA  
NATION RELIGION KING



# TOURISM STATISTICS REPORT

# October 2018

**MINISTRY OF TOURISM**

Statistics and Tourism Information Department

No. A3, Street 169, Sangkat Veal Vong, Khan 7 Makara, Phnom Penh, Cambodia.

Fax: +855 23 885003

E-mail: [kong@tourism.gov.kh](mailto:kong@tourism.gov.kh)

Web site: [www.tourism.gov.kh](http://www.tourism.gov.kh)

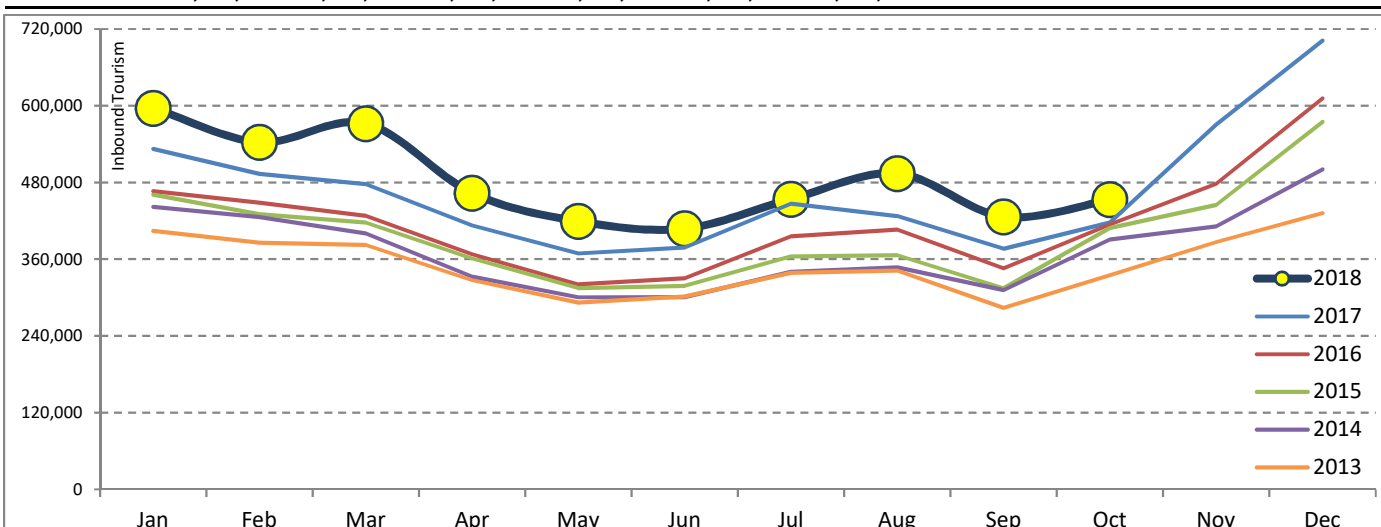
## Tourism Highlights

### Int'l Tourist Arrivals, Average Length of Stays, Hotel Occupancy & Int'l Tourism Receipts 1993 - 2017

Years	Int'l Tourist Arrivals		Average Length	Hotel Occupancy	Int'l Tourism Receipts
	Number	Change (%)	of Stays (Days)	(%)	(Million US\$)
1993	118,183	-	N/A	N/A	N/A
1994	176,617	49.4	N/A	N/A	N/A
1995	219,680	24.4	8.00	37.0	100
1996	260,489	18.6	7.50	40.0	118
1997	218,843	-16.0	6.40	30.0	103
1998	286,524	30.9	5.20	40.0	166
1999	367,743	28.3	5.50	44.0	190
2000	466,365	26.8	5.50	45.0	228
2001	604,919	29.7	5.50	48.0	304
2002	786,524	30.0	5.80	50.0	379
2003	701,014	-10.9	5.50	50.0	347
2004	1,055,202	50.5	6.30	52.0	578
2005	1,421,615	34.7	6.30	52.0	832
2006	1,700,041	19.6	6.50	54.8	1,049
2007	2,015,128	18.5	6.50	54.8	1,400
2008	2,125,465	5.5	6.65	62.7	1,595
2009	2,161,577	1.7	6.45	63.6	1,561
2010	2,508,289	16.0	6.45	65.7	1,786
2011	2,881,862	14.9	6.50	66.2	1,912
2012	3,584,307	24.4	6.30	68.5	2,210
2013	4,210,165	17.5	6.75	69.5	2,547
2014	4,502,775	7.0	6.50	67.6	2,736
2015	4,775,231	6.1	6.80	70.2	3,012
2016	5,011,712	5.0	6.30	68.9	3,212
2017	5,602,157	11.8	6.60	71.3	3,638

### International Tourist Arrivals to Cambodia

Months	2013	2014	2015	2016	2017	2018	Change (%)				
							14/13	15/13	16/15	17/16	18*/17
<b>Q1</b>	<b>1,172,072</b>	<b>1,267,922</b>	<b>1,307,836</b>	<b>1,342,477</b>	<b>1,502,896</b>	<b>1,711,253</b>	<b>8.2</b>	<b>3.1</b>	<b>2.6</b>	<b>11.9</b>	<b>13.9</b>
Jan	404,106	442,045	460,577	466,086	532,206	596,241	9.4	4.2	1.2	14.2	12.0
Feb	385,760	425,801	430,207	448,468	493,316	542,937	10.4	1.0	4.2	10.0	10.1
Mar	382,206	400,076	417,052	427,923	477,374	572,075	4.7	4.2	2.6	11.6	19.8
<b>Q2</b>	<b>920,527</b>	<b>933,446</b>	<b>994,154</b>	<b>1,018,455</b>	<b>1,159,783</b>	<b>1,290,407</b>	<b>1.4</b>	<b>6.5</b>	<b>2.4</b>	<b>13.9</b>	<b>11.3</b>
Apr	327,000	332,690	361,139	367,684	412,925	463,423	1.7	8.6	1.8	12.3	12.2
May	292,115	300,302	314,748	320,601	368,809	419,171	2.8	4.8	1.9	15.0	13.7
Jun	301,412	300,454	318,267	330,170	378,049	407,813	-0.3	5.9	3.7	14.5	7.9
<b>Q3</b>	<b>964,612</b>	<b>998,690</b>	<b>1,044,880</b>	<b>1,147,483</b>	<b>1,250,082</b>	<b>1,374,373</b>	<b>3.5</b>	<b>4.6</b>	<b>9.8</b>	<b>8.9</b>	<b>9.9</b>
Jul	338,761	340,091	364,325	395,761	446,627	454,056	0.4	7.1	8.6	12.9	1.7
Aug	342,064	347,211	366,096	406,214	427,224	494,043	1.5	5.4	11.0	5.2	15.6
Sep	283,787	311,388	314,459	345,508	376,231	426,274	9.7	1.0	9.9	8.9	13.3
<b>Q4</b>	<b>1,152,954</b>	<b>1,302,717</b>	<b>1,428,361</b>	<b>1,503,297</b>	<b>1,689,396</b>	<b>453,370</b>	<b>13.0</b>	<b>9.6</b>	<b>5.2</b>	<b>12.4</b>	
Oct	334,410	390,637	408,922	414,077	417,039	453,370	16.8	4.7	1.3	0.7	8.7
Nov	386,737	411,501	444,640	477,686	570,471		6.4	8.1	7.4	19.4	
Dec	431,807	500,579	574,799	611,534	701,886		15.9	14.8	6.4	14.8	
<b>Total</b>	<b>4,210,165</b>	<b>4,502,775</b>	<b>4,775,231</b>	<b>5,011,712</b>	<b>5,602,157</b>	<b>4,829,403</b>	<b>7.0</b>	<b>6.1</b>	<b>5.0</b>	<b>11.8</b>	<b>11.5</b>



Source: Tourism Statistics Department, MOT

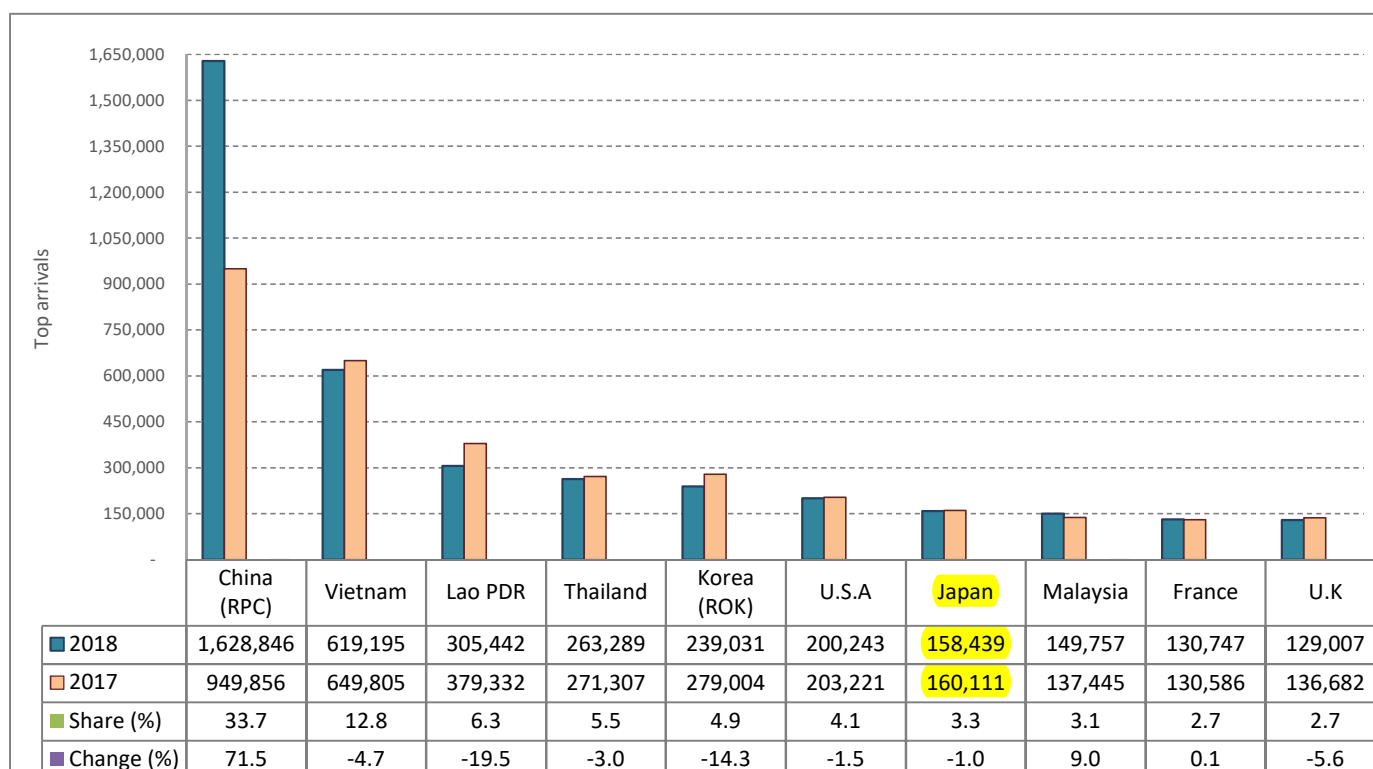
# CAMBODIA: TOURISM STATISTICS REPORT IN THE FIRST TEN MONTHS 2018

## I. INBOUND TOURISM

### 1. International tourist arrivals in January - October 2018

	Inbound tourism			Share (%) 2018*	Change (%)	
	2016	2017	2018		17/16	2018*/17
<b>Air</b>	<b>2,130,379</b>	<b>2,652,596</b>	<b>3,304,050</b>	<b>68.4</b>	<b>24.5</b>	<b>24.6</b>
Phnom Penh Int'l Airport (PNH)	935,894	1,144,213	1,560,993	32.3	22.3	36.4
Siem Reap Int'l Airport (REP)	1,173,647	1,442,666	1,578,317	32.7	22.9	9.4
Kong Keng (KOS)	20,838	65,717	164,740	3.4	215.4	150.7
<b>Land and Waterways</b>	<b>1,792,113</b>	<b>1,677,204</b>	<b>1,525,353</b>	<b>31.6</b>	<b>-6.4</b>	<b>-9.1</b>
Land	1,668,439	1,560,658	1,415,105	29.3	-6.5	-9.3
Waterways	123,674	116,546	110,248	2.3	-5.8	-5.4
<b>Total</b>	<b>3,922,492</b>	<b>4,329,800</b>	<b>4,829,403</b>	<b>100.0</b>	<b>10.4</b>	<b>11.5</b>

### 2. Top ten markets arrivals in January - October 2018



## II. OUTBOUND TOURISM

### Outbound tourism in January - October 2018

	Outbound tourism			Change (%)	
	2016	2017	2018	17/16	2018*/17
Cambodian Outbound Tourists	1,182,670	1,466,271	1,642,708	24.0	12.0
International Tourists Departure	3,641,093	4,146,691	4,649,155	13.9	12.1

## III. INTERNAL TOURISM

### Foreign visitor arrivals to the regions in January - October 2018

	Arrivals			Share (%) 2018*	Change (%)	
	2016	2017	2018		17/16	2018*/17
Phnom Penh & Surrounding	2,188,061	2,388,968	2,739,350	48.4	9.2	14.7
Siem Reap Angkor	1,734,791	1,940,832	2,090,043	36.9	11.9	7.7
Coastal Areas	524,258	607,780	773,508	13.7	15.9	27.3
Eco-tourism Areas	52,241	58,823	62,338	1.1	12.6	6.0
<b>Total</b>	<b>4,499,351</b>	<b>4,996,403</b>	<b>5,665,239</b>	<b>100.0</b>	<b>11.0</b>	<b>13.4</b>

## International Tourist Arrivals to Cambodia by Country of Residence in January - October 2018

(by all means of transportation)

Regions Country of Residence	2017	2018			Total	Female	Share	Change
		Purposes of Visit					2018*	2018*/17
		Holiday	Business	Others			(%)	(%)
<b>Grand Total</b>	<b>4,329,800</b>	<b>4,141,741</b>	<b>544,506</b>	<b>143,156</b>	<b>4,829,403</b>	<b>2,143,156</b>	<b>100.0</b>	<b>11.5</b>
<b>Asia and the Pacific</b>	<b>3,324,460</b>	<b>3,277,201</b>	<b>507,668</b>	<b>81,632</b>	<b>3,866,501</b>	<b>1,708,582</b>	<b>80.1</b>	<b>16.3</b>
<b>ASEAN (Southeast Asia)</b>	<b>1,628,192</b>	<b>1,383,891</b>	<b>99,057</b>	<b>42,368</b>	<b>1,525,316</b>	<b>710,641</b>	<b>31.6</b>	<b>-6.3</b>
Brunei Darussalam	752	561	16	44	621	250	0.0	-17.4
Indonesia	37,805	26,922	13,169	2,162	42,253	12,655	0.9	11.8
Lao PDR	379,332	297,932	204	7,306	305,442	189,751	6.3	-19.5
Malaysia	137,445	133,680	12,487	3,590	149,757	49,172	3.1	9.0
Myanmar	14,498	12,556	2,559	989	16,104	6,914	0.3	11.1
Philippines	77,361	55,783	8,761	2,443	66,987	37,010	1.4	-13.4
Singapore	59,887	55,889	3,687	2,092	61,668	19,426	1.3	3.0
Thailand	271,307	231,339	19,957	11,993	263,289	100,255	5.5	-3.0
Vietnam	649,805	569,229	38,217	11,749	619,195	295,208	12.8	-4.7
<b>Northeast Asia</b>	<b>1,497,399</b>	<b>1,728,934</b>	<b>396,122</b>	<b>21,419</b>	<b>2,146,475</b>	<b>923,592</b>	<b>44.4</b>	<b>43.3</b>
China	949,856	1,280,617	340,530	7,699	1,628,846	711,178	33.7	71.5
Hong Kong (China)	10,175	7,990	411	164	8,565	3,970	0.2	-15.8
Japan	160,111	132,477	21,489	4,473	158,439	56,901	3.3	-1.0
Korea (ROK)	279,004	218,075	15,123	5,833	239,031	107,050	4.9	-14.3
Macau (China)	346	395	21	55	471	134	0.0	36.1
Mongolia	514	558	28	36	622	311	0.0	21.0
Taiwan (China)	97,393	88,822	18,520	3,159	110,501	44,048	2.3	13.5
<b>Southern Asia</b>	<b>54,381</b>	<b>54,568</b>	<b>6,016</b>	<b>947</b>	<b>61,531</b>	<b>18,084</b>	<b>1.3</b>	<b>13.1</b>
Afghanistan	173	168	16	28	212	40	0.0	22.5
Bangladesh	1,691	1,995	369	109	2,473	330	0.1	46.2
Bhutan	145	87	13	57	157	86	0.0	8.3
India	45,636	44,882	4,074	426	49,382	15,587	1.0	8.2
Iran	723	820	50	45	915	301	0.0	26.6
Nepal	2,277	2,019	328	109	2,456	674	0.1	7.9
Pakistan	1,642	2,278	442	94	2,814	401	0.1	71.4
Sri Lanka	2,094	2,319	724	79	3,122	665	0.1	49.1
<b>Oceania</b>	<b>134,964</b>	<b>104,921</b>	<b>5,555</b>	<b>13,926</b>	<b>124,402</b>	<b>53,029</b>	<b>2.6</b>	<b>-7.8</b>
Australia	111,924	88,615	4,750	10,891	104,256	44,102	2.2	-6.9
Fiji	274	122	49	36	207	68	0.0	-24.5
New Zealand	22,766	16,184	756	2,999	19,939	8,859	0.4	-12.4
Other Asia & the Pacific	9,524	4,887	918	2,972	8,777	3,236	0.2	-7.8
<b>Europe</b>	<b>678,083</b>	<b>601,473</b>	<b>23,676</b>	<b>25,639</b>	<b>650,788</b>	<b>297,038</b>	<b>13.5</b>	<b>-4.0</b>
<b>Northern Europe</b>	<b>187,855</b>	<b>166,940</b>	<b>7,450</b>	<b>2,573</b>	<b>176,963</b>	<b>74,464</b>	<b>3.7</b>	<b>-5.8</b>
Denmark	11,201	10,184	483	179	10,846	4,873	0.2	-3.2
Finland	5,471	5,653	192	163	6,008	2,578	0.1	9.8
Iceland	818	596	15	23	634	204	0.0	-22.5
Ireland	10,431	9,668	432	109	10,209	4,624	0.2	-2.1
Norway	9,271	7,534	189	139	7,862	3,375	0.2	-15.2
Sweden	13,981	11,575	479	343	12,397	4,994	0.3	-11.3
United Kingdom	136,682	121,730	5,660	1,617	129,007	53,816	2.7	-5.6
<b>Western Europe</b>	<b>295,516</b>	<b>240,593</b>	<b>11,132</b>	<b>19,143</b>	<b>270,868</b>	<b>122,129</b>	<b>5.6</b>	<b>-8.3</b>
Austria	9,183	8,432	180	293	8,905	3,998	0.2	-3.0
Belgium	17,239	13,496	560	566	14,622	6,737	0.3	-15.2
France	130,586	108,222	6,920	15,605	130,747	59,314	2.7	0.1
Germany	93,316	73,543	1,824	1,443	76,810	34,080	1.6	-17.7
Luxembourg	760	539	23	29	591	283	0.0	-22.2
Monaco	76	43	11	18	72	26	0.0	-5.3
Netherlands	25,886	21,747	982	420	23,149	10,437	0.5	-10.6
Switzerland	18,470	14,571	632	769	15,972	7,254	0.3	-13.5
<b>Central / Eastern Europe</b>	<b>92,422</b>	<b>98,155</b>	<b>2,423</b>	<b>838</b>	<b>101,416</b>	<b>53,739</b>	<b>2.1</b>	<b>9.7</b>
Bulgaria	2,122	2,254	43	28	2,325	1,149	0.0	9.6
Czech Republic	6,563	5,517	101	49	5,667	2,642	0.1	-13.7
Estonia	2,036	2,624	148	26	2,798	1,073	0.1	37.4
Hungary	4,594	4,100	77	32	4,209	1,975	0.1	-8.4
Kazakhstan	1,664	1,382	247	43	1,672	865	0.0	0.5
Kyrgyzstan	175	203	27	20	250	104	0.0	42.9
Latvia	1,010	1,146	29	24	1,199	595	0.0	18.7
Lithuania	2,130	1,669	82	42	1,793	914	0.0	-15.8
Poland	14,272	15,278	187	67	15,532	7,855	0.3	8.8
Romania	2,694	2,915	65	65	3,045	1,554	0.1	13.0
Russian Federation	47,090	52,386	1,045	247	53,678	30,516	1.1	14.0
Slovakia	2,759	2,777	51	101	2,929	1,396	0.1	6.2
Ukraine	4,838	5,573	223	47	5,843	2,961	0.1	20.8
Uzbekistan	475	331	98	47	476	140	0.0	0.2

## International Tourist Arrivals to Cambodia by Country of Residence in January - October 2018

(by all means of transportation)

Regions Country of Residence	2017	2018			Total	Female	Share	Change
		Purposes of Visit					2018*	2018*/17
		Holiday	Business	Others			(%)	(%)
<b>Grand Total</b>	<b>4,329,800</b>	<b>4,141,741</b>	<b>544,506</b>	<b>143,156</b>	<b>4,829,403</b>	<b>2,143,156</b>	<b>100.0</b>	<b>11.5</b>
<b>Southern Europe</b>	<b>77,316</b>	<b>75,589</b>	<b>1,845</b>	<b>646</b>	<b>78,080</b>	<b>36,108</b>	<b>1.6</b>	<b>1.0</b>
Croatia	1,394	1,797	49	31	1,877	880	0.0	34.6
Greece	1,462	1,521	44	28	1,593	699	0.0	9.0
Italy	30,570	27,405	1,008	278	28,691	12,469	0.6	-6.1
Malta	394	355	20	14	389	187	0.0	-1.3
Portugal	6,036	5,347	129	36	5,512	2,692	0.1	-8.7
Serbia	892	963	27	25	1,015	507	0.0	13.8
Slovenia	1,272	1,146	39	33	1,218	484	0.0	-4.2
Spain	35,296	37,055	529	201	37,785	18,190	0.8	7.1
<b>East Mediterranean Europe</b>	<b>17,703</b>	<b>17,343</b>	<b>400</b>	<b>499</b>	<b>18,242</b>	<b>8,343</b>	<b>0.4</b>	<b>3.0</b>
Israel	11,093	11,481	145	151	11,777	5,518	0.2	6.2
Turkey	6,610	5,862	255	348	6,465	2,825	0.1	-2.2
Other Europe	7,271	2,853	426	1,940	5,219	2,255	0.1	-28.2
<b>Americas</b>	<b>312,625</b>	<b>250,466</b>	<b>11,798</b>	<b>35,141</b>	<b>297,405</b>	<b>132,192</b>	<b>6.2</b>	<b>-4.9</b>
<b>North America</b>	<b>264,595</b>	<b>211,998</b>	<b>10,572</b>	<b>33,947</b>	<b>256,517</b>	<b>111,771</b>	<b>5.3</b>	<b>-3.1</b>
Canada	54,210	42,802	2,205	4,174	49,181	22,267	1.0	-9.3
Mexico	7,164	6,918	66	109	7,093	3,486	0.1	-1.0
United States of America	203,221	162,278	8,301	29,664	200,243	86,018	4.1	-1.5
<b>Central America</b>	<b>1,048</b>	<b>1,469</b>	<b>142</b>	<b>58</b>	<b>1,669</b>	<b>659</b>	<b>0.0</b>	<b>59.3</b>
Costa Rica	769	1,140	106	27	1,273	496	0.0	65.5
Honduras	145	124	17	15	156	52	0.0	7.6
Jamaica	134	205	19	16	240	111	0.0	79.1
<b>South America</b>	<b>42,815</b>	<b>35,557</b>	<b>939</b>	<b>529</b>	<b>37,025</b>	<b>18,894</b>	<b>0.8</b>	<b>-13.5</b>
Argentina	14,984	9,691	34	73	9,798	5,325	0.2	-34.6
Brazil	13,915	10,286	204	261	10,751	5,242	0.2	-22.7
Chile	5,601	5,718	374	55	6,147	2,835	0.1	9.7
Colombia	3,969	6,400	250	50	6,700	3,636	0.1	68.8
Ecuador	744	598	13	24	635	336	0.0	-14.7
Peru	1,391	1,517	26	32	1,575	780	0.0	13.2
Uruguay	1,574	1,120	15	19	1,154	618	0.0	-26.7
Venezuela	637	227	23	15	265	122	0.0	-58.4
Other America	4,167	1,442	145	607	2,194	868	0.0	-47.3
<b>Africa</b>	<b>9,950</b>	<b>9,058</b>	<b>1,031</b>	<b>456</b>	<b>10,545</b>	<b>4,541</b>	<b>0.2</b>	<b>6.0</b>
<b>North Africa</b>	<b>994</b>	<b>1,041</b>	<b>61</b>	<b>74</b>	<b>1,176</b>	<b>474</b>	<b>0.0</b>	<b>18.3</b>
Morocco	629	689	27	28	744	338	0.0	18.3
Sudan	115	134	22	23	179	37	0.0	55.7
Tunisia	250	218	12	23	253	99	0.0	1.2
<b>Subsaharan Africa</b>	<b>7,691</b>	<b>7,707</b>	<b>929</b>	<b>309</b>	<b>8,945</b>	<b>3,913</b>	<b>0.2</b>	<b>16.3</b>
Cameroon	140	175	25	23	223	52	0.0	59.3
Congo	78	227	19	14	260	89	0.0	233.3
Ghana	262	340	22	20	382	140	0.0	45.8
Kenya	329	329	36	47	412	214	0.0	25.2
Liberia	51	1,204	54	85	1,343	518	0.0	2533.3
Nigeria	1,166	153	272	30	455	104	0.0	-61.0
South Africa	5,236	5,019	460	44	5,523	2,644	0.1	5.5
Tanzania	194	62	11	15	88	25	0.0	-54.6
Uganda	108	100	13	13	126	73	0.0	16.7
Zimbabwe	127	98	17	18	133	54	0.0	4.7
Other Africa	1,265	310	41	73	424	154	0.0	-66.5
<b>Middle East</b>	<b>4,682</b>	<b>3,543</b>	<b>333</b>	<b>288</b>	<b>4,164</b>	<b>803</b>	<b>0.1</b>	<b>-11.1</b>
Egypt	665	587	67	22	676	148	0.0	1.7
Iraq	234	457	47	28	532	71	0.0	127.4
Jordan	485	339	41	15	395	92	0.0	-18.6
Kuwait	454	343	20	29	392	61	0.0	-13.7
Oman	214	181	13	29	223	33	0.0	4.2
Palestine	104	79	23	18	120	16	0.0	15.4
Qatar	92	58	12	14	84	14	0.0	-8.7
Saudi Arabia	221	225	13	24	262	27	0.0	18.6
Syria	476	364	21	20	405	59	0.0	-14.9
United Arab Emirates	204	139	30	24	193	33	0.0	-5.4
Yemen	538	526	18	15	559	145	0.0	3.9
Other Middle East	995	245	28	50	323	104	0.0	-67.5

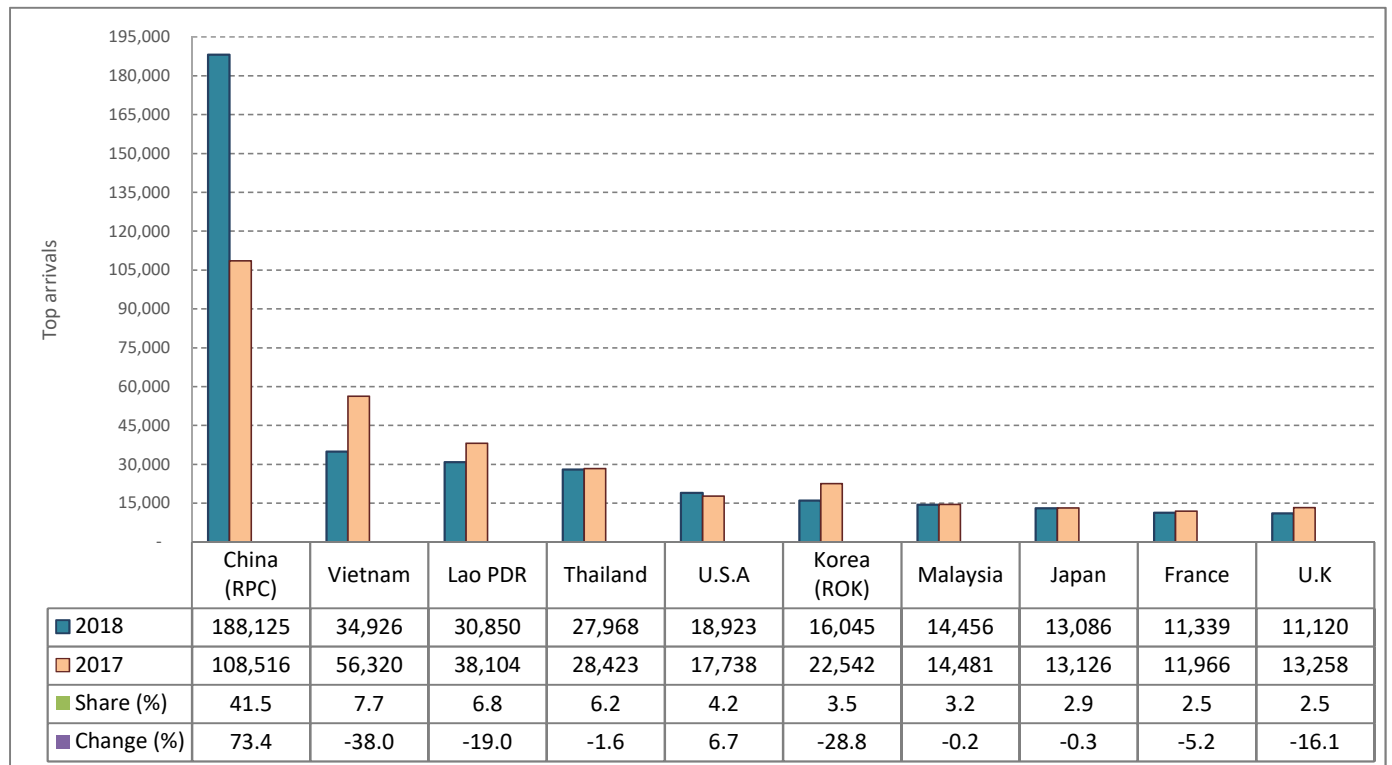
# CAMBODIA: TOURISM STATISTICS REPORT IN OCTOBER 2018

## I. INBOUND TOURISM

### 1. International tourist arrivals in October 2018

	Inbound tourism			Share (%) 2018*	Change (%)	
	2016	2017	2018		17/16	2018*/17
<b>Air</b>	<b>223,403</b>	<b>269,187</b>	<b>345,129</b>	<b>76.1</b>	<b>20.5</b>	<b>28.2</b>
Phnom Penh Int'l Airport (PNH)	101,708	117,493	169,234	37.3	15.5	44.0
Siem Reap Int'l Airport (REP)	116,182	144,315	145,818	32.2	24.2	1.0
Kong Keng (KOS)	5,513	7,379	30,077	6.6	33.8	307.6
<b>Land and Waterways</b>	<b>190,674</b>	<b>147,852</b>	<b>108,241</b>	<b>23.9</b>	<b>-22.5</b>	<b>-26.8</b>
Land	182,408	139,575	100,015	22.1	-23.5	-28.3
Waterways	8,266	8,277	8,226	1.8	0.1	-0.6
<b>Total</b>	<b>414,077</b>	<b>417,039</b>	<b>453,370</b>	<b>100.0</b>	<b>0.7</b>	<b>8.7</b>

### 2. Top ten markets arrivals in October 2018



## II. OUTBOUND TOURISM

### Outbound tourism in October 2018

	Outbound tourism			Change (%)	
	2016	2017	2018	17/16	2018*/17
Cambodian Outbound Tourists	123,149	146,799	183,201	19.2	24.8
International Tourists Departure	345,779	395,101	422,005	14.3	6.8

## III. INTERNAL TOURISM

### Foreign visitor arrivals to the regions in October 2018

	Arrivals			Share (%) 2018*	Change (%)	
	2016	2017	2018		17/16	2018*/17
Phnom Penh & Surrounding	247,878	229,479	264,896	51.0	-7.4	15.4
Siem Reap Angkor	166,199	187,560	188,474	36.3	12.9	0.5
Coastal Areas	45,030	52,815	61,773	11.9	17.3	17.0
Eco-tourism Areas	4,142	3,741	4,286	0.8	-9.7	14.6
<b>Total</b>	<b>463,249</b>	<b>473,595</b>	<b>519,429</b>	<b>100.0</b>	<b>2.2</b>	<b>9.7</b>

## International Tourist Arrivals to Cambodia by Country of Residence in October 2018

(by all means of transportation)

Regions Country of Residence	2017	2018			Total	Female	Share	Change
		Purposes of Visit					2018*	2018*/17
		Holiday	Business	Others			(%)	(%)
<b>Grand Total</b>	<b>417,039</b>	<b>361,718</b>	<b>79,459</b>	<b>12,193</b>	<b>453,370</b>	<b>195,476</b>	<b>100.0</b>	<b>8.7</b>
<b>Asia and the Pacific</b>	<b>329,129</b>	<b>290,977</b>	<b>74,908</b>	<b>6,476</b>	<b>372,361</b>	<b>159,090</b>	<b>82.1</b>	<b>13.1</b>
<b>ASEAN (Southeast Asia)</b>	<b>154,900</b>	<b>110,008</b>	<b>11,801</b>	<b>3,272</b>	<b>125,081</b>	<b>60,150</b>	<b>27.6</b>	<b>-19.3</b>
Brunei Darussalam	68	37	1	2	40	9	0.0	-41.2
Indonesia	3,518	1,967	1,904	46	3,917	1,121	0.9	11.3
Lao PDR	38,104	29,983	28	839	30,850	20,220	6.8	-19.0
Malaysia	14,481	12,290	1,742	424	14,456	4,649	3.2	-0.2
Myanmar	1,703	1,159	363	27	1,549	718	0.3	-9.0
Philippines	6,711	4,411	1,180	56	5,647	3,397	1.2	-15.9
Singapore	5,572	4,990	479	259	5,728	1,622	1.3	2.8
Thailand	28,423	24,641	2,481	846	27,968	11,614	6.2	-1.6
Vietnam	56,320	30,530	3,623	773	34,926	16,800	7.7	-38.0
<b>Northeast Asia</b>	<b>154,143</b>	<b>165,306</b>	<b>61,636</b>	<b>1,744</b>	<b>228,686</b>	<b>91,788</b>	<b>50.4</b>	<b>48.4</b>
China	108,516	132,409	54,944	772	188,125	76,345	41.5	73.4
Hong Kong (China)	443	443	12	16	471	203	0.1	6.3
Japan	13,126	10,387	2,398	301	13,086	4,348	2.9	-0.3
Korea (ROK)	22,542	13,662	1,943	440	16,045	6,496	3.5	-28.8
Macau (China)	32	14	3	2	19	1	0.0	-40.6
Mongolia	38	33	1	4	38	12	0.0	0.0
Taiwan (China)	9,446	8,358	2,335	209	10,902	4,383	2.4	15.4
<b>Southern Asia</b>	<b>5,622</b>	<b>5,879</b>	<b>759</b>	<b>89</b>	<b>6,727</b>	<b>2,013</b>	<b>1.5</b>	<b>19.7</b>
Afghanistan	9	12	1	2	15	5	0.0	66.7
Bangladesh	202	239	54	23	316	50	0.1	56.4
Bhutan	14	12	3	4	19	2	0.0	35.7
India	4,690	4,637	494	31	5,162	1,650	1.1	10.1
Iran	86	35	4	3	42	11	0.0	-51.2
Nepal	185	277	36	8	321	108	0.1	73.5
Pakistan	211	294	55	5	354	49	0.1	67.8
Sri Lanka	225	373	112	13	498	138	0.1	121.3
<b>Oceania</b>	<b>12,951</b>	<b>9,732</b>	<b>696</b>	<b>1,344</b>	<b>11,772</b>	<b>5,098</b>	<b>2.6</b>	<b>-9.1</b>
Australia	10,830	8,300	591	1,100	9,991	4,353	2.2	-7.7
Fiji	21	16	10	3	29	13	0.0	38.1
New Zealand	2,100	1,416	95	241	1,752	732	0.4	-16.6
Other Asia & the Pacific	1,513	52	16	27	95	41	0.0	-93.7
<b>Europe</b>	<b>59,555</b>	<b>47,536</b>	<b>2,786</b>	<b>2,334</b>	<b>52,656</b>	<b>23,755</b>	<b>11.6</b>	<b>-11.6</b>
<b>Northern Europe</b>	<b>17,094</b>	<b>13,460</b>	<b>827</b>	<b>205</b>	<b>14,492</b>	<b>6,053</b>	<b>3.2</b>	<b>-15.2</b>
Denmark	830	729	26	12	767	374	0.2	-7.6
Finland	488	420	10	15	445	229	0.1	-8.8
Iceland	47	24	3	2	29	12	0.0	-38.3
Ireland	1,005	703	55	7	765	351	0.2	-23.9
Norway	645	423	20	9	452	179	0.1	-29.9
Sweden	821	827	53	34	914	387	0.2	11.3
United Kingdom	13,258	10,334	660	126	11,120	4,521	2.5	-16.1
<b>Western Europe</b>	<b>25,700</b>	<b>19,580</b>	<b>1,361</b>	<b>1,875</b>	<b>22,816</b>	<b>10,119</b>	<b>5.0</b>	<b>-11.2</b>
Austria	715	618	21	12	651	316	0.1	-9.0
Belgium	1,359	985	79	47	1,111	485	0.2	-18.2
France	11,966	8,937	830	1,572	11,339	4,998	2.5	-5.2
Germany	8,093	6,138	207	144	6,489	2,903	1.4	-19.8
Luxembourg	77	42	3	4	49	21	0.0	-36.4
Monaco	7	5	1	2	8	1	0.0	14.3
Netherlands	1,997	1,622	142	25	1,789	762	0.4	-10.4
Switzerland	1,486	1,233	78	69	1,380	633	0.3	-7.1
<b>Central / Eastern Europe</b>	<b>7,431</b>	<b>6,720</b>	<b>303</b>	<b>135</b>	<b>7,158</b>	<b>3,734</b>	<b>1.6</b>	<b>-3.7</b>
Bulgaria	141	99	6	4	109	49	0.0	-22.7
Czech Republic	409	261	14	5	280	118	0.1	-31.5
Estonia	191	89	4	2	95	43	0.0	-50.3
Hungary	291	378	11	4	393	192	0.1	35.1
Kazakhstan	118	98	33	10	141	70	0.0	19.5
Kyrgyzstan	17	7	3	2	12	5	0.0	-29.4
Latvia	94	79	3	3	85	43	0.0	-9.6
Lithuania	135	132	8	7	147	76	0.0	8.9
Poland	1,222	1,205	29	3	1,237	610	0.3	1.2
Romania	314	331	9	12	352	187	0.1	12.1
Russian Federation	3,928	3,289	114	17	3,420	1,920	0.8	-12.9
Slovakia	183	179	7	53	239	104	0.1	30.6
Ukraine	373	562	55	8	625	313	0.1	67.6
Uzbekistan	15	11	7	5	23	4	0.0	53.3

## International Tourist Arrivals to Cambodia by Country of Residence in October 2018

(by all means of transportation)

Regions Country of Residence	2017	2018			Total	Female	Share	Change
		Purposes of Visit					2018*	2018*/17
		Holiday	Business	Others			(%)	(%)
<b>Grand Total</b>	<b>417,039</b>	<b>361,718</b>	<b>79,459</b>	<b>12,193</b>	<b>453,370</b>	<b>195,476</b>	<b>100.0</b>	<b>8.7</b>
<b>Southern Europe</b>	<b>6,610</b>	<b>6,485</b>	<b>238</b>	<b>77</b>	<b>6,800</b>	<b>3,232</b>	<b>1.5</b>	<b>2.9</b>
Croatia	143	149	12	2	163	71	0.0	14.0
Greece	100	69	3	3	75	31	0.0	-25.0
Italy	2,065	1,317	119	31	1,467	604	0.3	-29.0
Malta	21	32	2	1	35	16	0.0	66.7
Portugal	554	549	17	3	569	284	0.1	2.7
Serbia	52	53	4	5	62	25	0.0	19.2
Slovenia	175	82	4	1	87	41	0.0	-50.3
Spain	3,500	4,234	77	31	4,342	2,160	1.0	24.1
<b>East Mediterranean Europe</b>	<b>1,616</b>	<b>1,256</b>	<b>47</b>	<b>24</b>	<b>1,327</b>	<b>590</b>	<b>0.3</b>	<b>-17.9</b>
Israel	1,055	972	14	13	999	462	0.2	-5.3
Turkey	561	284	33	11	328	128	0.1	-41.5
Other Europe	1,104	35	10	18	63	27	0.0	-94.3
<b>Americas</b>	<b>26,904</b>	<b>22,346</b>	<b>1,596</b>	<b>3,324</b>	<b>27,266</b>	<b>12,285</b>	<b>6.0</b>	<b>1.3</b>
<b>North America</b>	<b>22,994</b>	<b>19,515</b>	<b>1,265</b>	<b>3,269</b>	<b>24,049</b>	<b>10,830</b>	<b>5.3</b>	<b>4.6</b>
Canada	4,489	3,659	267	387	4,313	2,006	1.0	-3.9
Mexico	767	790	10	13	813	439	0.2	6.0
United States of America	17,738	15,066	988	2,869	18,923	8,385	4.2	6.7
<b>Central America</b>	<b>126</b>	<b>89</b>	<b>9</b>	<b>6</b>	<b>104</b>	<b>57</b>	<b>0.0</b>	<b>-17.5</b>
Costa Rica	104	74	2	3	79	45	0.0	-24.0
Honduras	11	7	3	1	11	5	0.0	0.0
Jamaica	11	8	4	2	14	7	0.0	27.3
<b>South America</b>	<b>3,066</b>	<b>2,725</b>	<b>317</b>	<b>40</b>	<b>3,082</b>	<b>1,384</b>	<b>0.7</b>	<b>0.5</b>
Argentina	911	446	5	2	453	258	0.1	-50.3
Brazil	927	720	14	5	739	360	0.2	-20.3
Chile	372	960	273	18	1,251	433	0.3	236.3
Colombia	424	376	13	4	393	212	0.1	-7.3
Ecuador	94	62	3	5	70	34	0.0	-25.5
Peru	181	110	3	2	115	63	0.0	-36.5
Uruguay	65	32	4	3	39	12	0.0	-40.0
Venezuela	92	19	2	1	22	12	0.0	-76.1
Other America	718	17	5	9	31	14	0.0	-95.7
<b>Africa</b>	<b>1,053</b>	<b>554</b>	<b>135</b>	<b>29</b>	<b>718</b>	<b>289</b>	<b>0.2</b>	<b>-31.8</b>
<b>North Africa</b>	<b>161</b>	<b>53</b>	<b>6</b>	<b>7</b>	<b>66</b>	<b>20</b>	<b>0.0</b>	<b>-59.0</b>
Morocco	97	37	3	2	42	15	0.0	-56.7
Sudan	18	13	2	3	18	4	0.0	0.0
Tunisia	46	3	1	2	6	1	0.0	-87.0
<b>Subsaharan Africa</b>	<b>716</b>	<b>489</b>	<b>126</b>	<b>16</b>	<b>631</b>	<b>263</b>	<b>0.1</b>	<b>-11.9</b>
Cameroon	45	18	1	1	20	3	0.0	-55.6
Congo	8	13	1	1	15	3	0.0	87.5
Ghana	8	8	2	3	13	0	0.0	62.5
Kenya	49	34	3	1	38	22	0.0	-22.4
Liberia	8	7	1	2	10	2	0.0	25.0
Nigeria	30	15	36	3	54	14	0.0	80.0
South Africa	533	374	78	1	453	202	0.1	-15.0
Tanzania	8	2	1	1	4	1	0.0	-50.0
Uganda	6	13	2	2	17	12	0.0	183.3
Zimbabwe	21	5	1	1	7	4	0.0	-66.7
Other Africa	176	12	3	6	21	6	0.0	-88.1
<b>Middle East</b>	<b>398</b>	<b>305</b>	<b>34</b>	<b>30</b>	<b>369</b>	<b>57</b>	<b>0.1</b>	<b>-7.3</b>
Egypt	40	56	5	1	62	10	0.0	55.0
Iraq	26	15	4	3	22	3	0.0	-15.4
Jordan	28	22	3	2	27	4	0.0	-3.6
Kuwait	17	26	1	1	28	1	0.0	64.7
Oman	31	18	2	3	23	0	0.0	-25.8
Palestine	8	7	1	2	10	0	0.0	25.0
Qatar	6	6	1	1	8	1	0.0	33.3
Saudi Arabia	19	24	2	1	27	3	0.0	42.1
Syria	38	46	6	4	56	11	0.0	47.4
United Arab Emirates	20	10	4	5	19	1	0.0	-5.0
Yemen	31	70	3	4	77	21	0.0	148.4
Other Middle East	134	5	2	3	10	2	0.0	-92.5