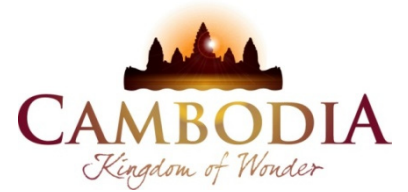




KINGDOM OF CAMBODIA
NATION RELIGION KING



TOURISM STATISTICS REPORT

November 2018

MINISTRY OF TOURISM

Statistics and Tourism Information Department

No. A3, Street 169, Sangkat Veal Vong, Khan 7 Makara, Phnom Penh, Cambodia.

Fax: +855 23 885003

E-mail: kong@tourism.gov.kh

Web site: www.tourism.gov.kh

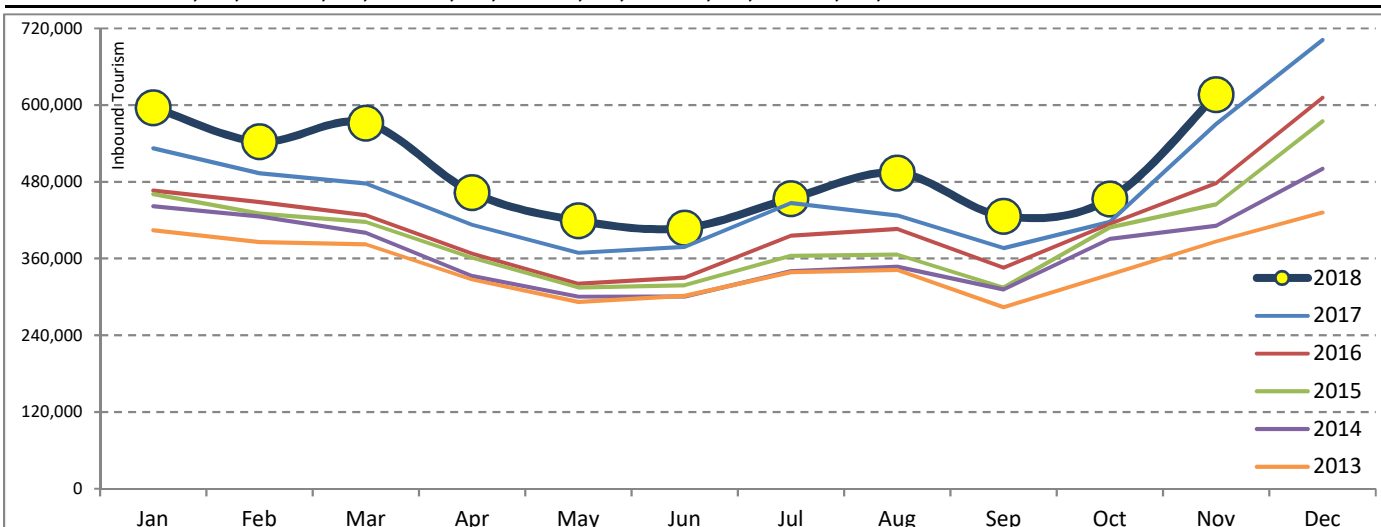
Tourism Highlights

Int'l Tourist Arrivals, Average Length of Stays, Hotel Occupancy & Int'l Tourism Receipts 1993 - 2017

Years	Int'l Tourist Arrivals		Average Length	Hotel Occupancy	Int'l Tourism Receipts
	Number	Change (%)	of Stays (Days)	(%)	(Million US\$)
1993	118,183	-	N/A	N/A	N/A
1994	176,617	49.4	N/A	N/A	N/A
1995	219,680	24.4	8.00	37.0	100
1996	260,489	18.6	7.50	40.0	118
1997	218,843	-16.0	6.40	30.0	103
1998	286,524	30.9	5.20	40.0	166
1999	367,743	28.3	5.50	44.0	190
2000	466,365	26.8	5.50	45.0	228
2001	604,919	29.7	5.50	48.0	304
2002	786,524	30.0	5.80	50.0	379
2003	701,014	-10.9	5.50	50.0	347
2004	1,055,202	50.5	6.30	52.0	578
2005	1,421,615	34.7	6.30	52.0	832
2006	1,700,041	19.6	6.50	54.8	1,049
2007	2,015,128	18.5	6.50	54.8	1,400
2008	2,125,465	5.5	6.65	62.7	1,595
2009	2,161,577	1.7	6.45	63.6	1,561
2010	2,508,289	16.0	6.45	65.7	1,786
2011	2,881,862	14.9	6.50	66.2	1,912
2012	3,584,307	24.4	6.30	68.5	2,210
2013	4,210,165	17.5	6.75	69.5	2,547
2014	4,502,775	7.0	6.50	67.6	2,736
2015	4,775,231	6.1	6.80	70.2	3,012
2016	5,011,712	5.0	6.30	68.9	3,212
2017	5,602,157	11.8	6.60	71.3	3,638

International Tourist Arrivals to Cambodia

Months	2013	2014	2015	2016	2017	2018	Change (%)				
							14/13	15/13	16/15	17/16	18*/17
Q1	1,172,072	1,267,922	1,307,836	1,342,477	1,502,896	1,711,253	8.2	3.1	2.6	11.9	13.9
Jan	404,106	442,045	460,577	466,086	532,206	596,241	9.4	4.2	1.2	14.2	12.0
Feb	385,760	425,801	430,207	448,468	493,316	542,937	10.4	1.0	4.2	10.0	10.1
Mar	382,206	400,076	417,052	427,923	477,374	572,075	4.7	4.2	2.6	11.6	19.8
Q2	920,527	933,446	994,154	1,018,455	1,159,783	1,290,407	1.4	6.5	2.4	13.9	11.3
Apr	327,000	332,690	361,139	367,684	412,925	463,423	1.7	8.6	1.8	12.3	12.2
May	292,115	300,302	314,748	320,601	368,809	419,171	2.8	4.8	1.9	15.0	13.7
Jun	301,412	300,454	318,267	330,170	378,049	407,813	-0.3	5.9	3.7	14.5	7.9
Q3	964,612	998,690	1,044,880	1,147,483	1,250,082	1,374,373	3.5	4.6	9.8	8.9	9.9
Jul	338,761	340,091	364,325	395,761	446,627	454,056	0.4	7.1	8.6	12.9	1.7
Aug	342,064	347,211	366,096	406,214	427,224	494,043	1.5	5.4	11.0	5.2	15.6
Sep	283,787	311,388	314,459	345,508	376,231	426,274	9.7	1.0	9.9	8.9	13.3
Q4	1,152,954	1,302,717	1,428,361	1,503,297	1,689,396	1,069,919	13.0	9.6	5.2	12.4	
Oct	334,410	390,637	408,922	414,077	417,039	453,370	16.8	4.7	1.3	0.7	8.7
Nov	386,737	411,501	444,640	477,686	570,471	616,549	6.4	8.1	7.4	19.4	8.1
Dec	431,807	500,579	574,799	611,534	701,886		15.9	14.8	6.4	14.8	
Total	4,210,165	4,502,775	4,775,231	5,011,712	5,602,157	5,445,952	7.0	6.1	5.0	11.8	11.1



Source: Tourism Statistics Department, MOT

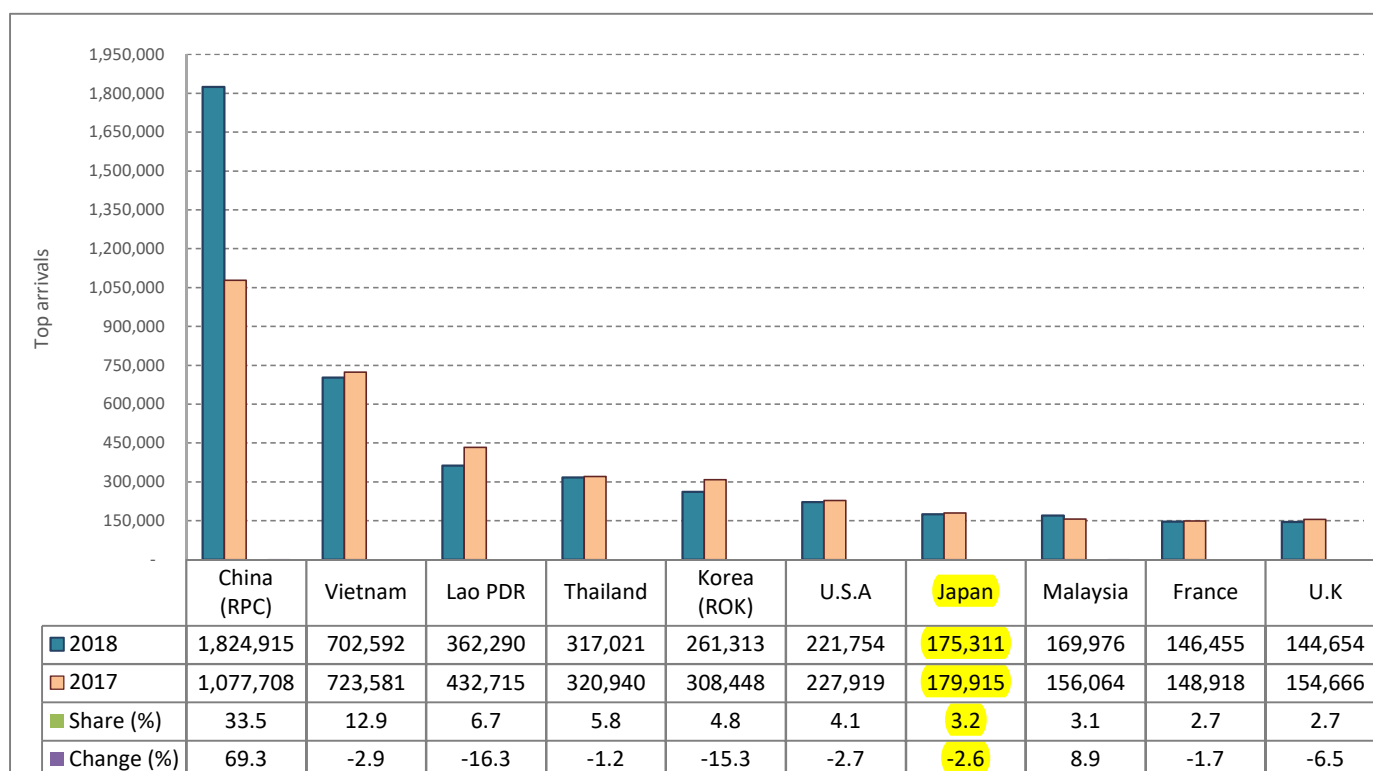
CAMBODIA: TOURISM STATISTICS REPORT IN THE FIRST ELEVEN MONTHS 2018

I. INBOUND TOURISM

1. International tourist arrivals in January - November 2018

	Inbound tourism			Share (%) 2018*	Change (%)	
	2016	2017	2018		17/16	2018*/17
Air	2,400,218	2,977,493	3,683,783	67.6	24.1	23.7
Phnom Penh Int'l Airport (PNH)	1,046,992	1,280,247	1,738,767	31.9	22.3	35.8
Siem Reap Int'l Airport (REP)	1,326,737	1,624,137	1,745,983	32.1	22.4	7.5
Kong Keng (KOS)	26,489	73,109	199,033	3.7	176.0	172.2
Land and Waterways	1,999,960	1,922,778	1,762,169	32.4	-3.9	-8.4
Land	1,861,262	1,793,905	1,633,937	30.0	-3.6	-8.9
Waterways	138,698	128,873	128,232	2.4	-7.1	-0.5
Total	4,400,178	4,900,271	5,445,952	100.0	11.4	11.1

2. Top ten markets arrivals in January - November 2018



II. OUTBOUND TOURISM

Outbound tourism in January - November 2018

	Outbound tourism			Change (%)	
	2016	2017	2018	17/16	2018*/17
Cambodian Outbound Tourists	1,306,393	1,612,525	1,814,336	23.4	12.5
International Tourists Departure	4,042,135	4,590,230	5,141,545	13.6	12.0

III. INTERNAL TOURISM

Foreign visitor arrivals to the regions in January - November 2018

	Arrivals			Share (%) 2018*	Change (%)	
	2016	2017	2018		17/16	2018*/17
Phnom Penh & Surrounding	2,445,830	2,710,208	3,122,774	49.0	10.8	15.2
Siem Reap Angkor	1,954,708	2,190,063	2,323,168	36.5	12.0	6.1
Coastal Areas	574,985	666,939	857,800	13.5	16.0	28.6
Eco-tourism Areas	58,767	65,373	67,683	1.1	11.2	3.5
Total	5,034,290	5,632,583	6,371,425	100.0	11.9	13.1

Source: Tourism Statistics Department, MOT.

International Tourist Arrivals to Cambodia by Country of Residence in January - November 2018

(by all means of transportation)

Regions Country of Residence	2017		2018				Share	Change	
			Purposes of Visit			Total	Female	2018*	2018*/17
			Holiday	Business	Others			(%)	(%)
Grand Total	4,900,271	4,672,490	615,177	158,285	5,445,952	2,370,919	100.0	11.1	
Asia and the Pacific	3,760,704	3,709,935	574,071	90,235	4,374,241	1,887,471	80.3	16.3	
ASEAN (Southeast Asia)	1,850,363	1,608,234	108,989	46,867	1,764,090	784,384	32.4	-4.7	
Brunei Darussalam	876	612	18	47	677	267	0.0	-22.7	
Indonesia	43,005	30,218	14,820	2,218	47,256	13,776	0.9	9.9	
Lao PDR	432,715	353,669	360	8,261	362,290	207,215	6.7	-16.3	
Malaysia	156,064	151,966	13,781	4,229	169,976	55,001	3.1	8.9	
Myanmar	16,085	14,745	2,897	1,032	18,674	7,625	0.3	16.1	
Philippines	88,906	63,961	9,531	2,532	76,024	41,070	1.4	-14.5	
Singapore	68,191	63,047	4,094	2,439	69,580	21,563	1.3	2.0	
Thailand	320,940	282,293	21,731	12,997	317,021	115,752	5.8	-1.2	
Vietnam	723,581	647,723	41,757	13,112	702,592	322,115	12.9	-2.9	
Northeast Asia	1,687,667	1,919,803	451,317	23,901	2,395,021	1,020,939	44.0	41.9	
China	1,077,708	1,426,251	390,235	8,429	1,824,915	791,305	33.5	69.3	
Hong Kong (China)	11,705	9,687	432	182	10,301	4,317	0.2	-12.0	
Japan	179,915	146,437	23,672	5,202	175,311	62,023	3.2	-2.6	
Korea (ROK)	308,448	238,062	16,597	6,654	261,313	114,056	4.8	-15.3	
Macau (China)	440	424	26	58	508	137	0.0	15.5	
Mongolia	578	603	30	40	673	329	0.0	16.4	
Taiwan (China)	108,873	98,339	20,325	3,336	122,000	48,772	2.2	12.1	
Southern Asia	59,907	61,857	6,664	1,019	69,540	20,537	1.3	16.1	
Afghanistan	198	192	18	30	240	47	0.0	21.2	
Bangladesh	1,846	2,263	410	119	2,792	372	0.1	51.2	
Bhutan	169	90	15	59	164	87	0.0	-3.0	
India	50,334	50,412	4,491	458	55,361	17,588	1.0	10.0	
Iran	788	1,311	53	47	1,411	427	0.0	79.1	
Nepal	2,439	2,316	384	116	2,816	816	0.1	15.5	
Pakistan	1,795	2,596	483	101	3,180	451	0.1	77.2	
Sri Lanka	2,338	2,677	810	89	3,576	749	0.1	53.0	
Oceania	150,309	115,027	6,147	15,419	136,593	58,292	2.5	-9.1	
Australia	124,988	97,232	5,267	12,131	114,630	48,581	2.1	-8.3	
Fiji	321	140	53	41	234	77	0.0	-27.1	
New Zealand	25,000	17,655	827	3,247	21,729	9,634	0.4	-13.1	
Other Asia & the Pacific	12,458	5,014	954	3,029	8,997	3,319	0.2	-27.8	
Europe	771,723	671,583	26,271	28,116	725,970	331,072	13.3	-5.9	
Northern Europe	211,488	186,070	8,229	2,808	197,107	82,511	3.6	-6.8	
Denmark	12,304	11,015	518	200	11,733	5,691	0.2	-4.6	
Finland	6,191	6,215	225	183	6,623	2,884	0.1	7.0	
Iceland	855	643	18	28	689	227	0.0	-19.4	
Ireland	11,649	10,615	473	116	11,204	5,066	0.2	-3.8	
Norway	10,258	8,249	204	149	8,602	3,682	0.2	-16.1	
Sweden	15,565	12,700	530	372	13,602	5,510	0.2	-12.6	
United Kingdom	154,666	136,633	6,261	1,760	144,654	59,451	2.7	-6.5	
Western Europe	336,907	270,724	12,316	21,157	304,197	137,189	5.6	-9.7	
Austria	10,229	9,450	201	304	9,955	4,508	0.2	-2.7	
Belgium	19,449	15,194	622	607	16,423	7,514	0.3	-15.6	
France	148,918	121,530	7,596	17,329	146,455	66,339	2.7	-1.7	
Germany	107,137	83,368	2,040	1,567	86,975	38,811	1.6	-18.8	
Luxembourg	847	585	30	34	649	304	0.0	-23.4	
Monaco	82	47	13	21	81	29	0.0	-1.2	
Netherlands	29,353	24,173	1,096	461	25,730	11,575	0.5	-12.3	
Switzerland	20,892	16,377	718	834	17,929	8,109	0.3	-14.2	
Central / Eastern Europe	108,102	109,033	2,761	940	112,734	59,675	2.1	4.3	
Bulgaria	2,433	2,467	47	41	2,555	1,275	0.0	5.0	
Czech Republic	7,526	6,079	113	56	6,248	2,913	0.1	-17.0	
Estonia	2,408	2,781	156	36	2,973	1,157	0.1	23.5	
Hungary	5,307	4,760	85	37	4,882	2,318	0.1	-8.0	
Kazakhstan	1,886	1,472	268	49	1,789	928	0.0	-5.1	
Kyrgyzstan	191	215	30	21	266	112	0.0	39.3	
Latvia	1,224	1,261	37	31	1,329	659	0.0	8.6	
Lithuania	2,447	1,835	95	47	1,977	1,008	0.0	-19.2	
Poland	17,253	17,814	216	74	18,104	9,150	0.3	4.9	
Romania	3,085	3,270	79	67	3,416	1,744	0.1	10.7	
Russian Federation	55,143	57,238	1,174	273	58,685	33,273	1.1	6.4	
Slovakia	3,280	3,239	57	105	3,401	1,626	0.1	3.7	
Ukraine	5,411	6,250	296	49	6,595	3,363	0.1	21.9	
Uzbekistan	508	352	108	54	514	149	0.0	1.2	

Source: Tourism Statistics Department, MOT.

International Tourist Arrivals to Cambodia by Country of Residence in January - November 2018

(by all means of transportation)

Regions Country of Residence	2017	2018			Total	Female	Share	Change
		Purposes of Visit					2018*	2018*/17
		Holiday	Business	Others			(%)	(%)
Grand Total	4,900,271	4,672,490	615,177	158,285	5,445,952	2,370,919	100.0	11.1
Southern Europe	86,805	84,067	2,060	718	86,845	40,384	1.6	0.0
Croatia	1,640	1,986	53	35	2,074	962	0.0	26.5
Greece	1,635	1,655	49	33	1,737	763	0.0	6.2
Italy	34,402	29,654	1,121	302	31,077	13,566	0.6	-9.7
Malta	429	366	22	17	405	192	0.0	-5.6
Portugal	7,073	6,115	143	41	6,299	3,095	0.1	-10.9
Serbia	978	1,060	34	31	1,125	551	0.0	15.0
Slovenia	1,469	1,294	47	37	1,378	554	0.0	-6.2
Spain	39,179	41,937	591	222	42,750	20,701	0.8	9.1
East Mediterranean Europe	19,492	18,751	456	534	19,741	9,007	0.4	1.3
Israel	12,147	12,485	166	169	12,820	5,992	0.2	5.5
Turkey	7,345	6,266	290	365	6,921	3,015	0.1	-5.8
Other Europe	8,929	2,938	449	1,959	5,346	2,306	0.1	-40.1
Americas	351,751	277,278	13,311	39,098	329,687	146,614	6.1	-6.3
North America	298,526	235,055	11,720	37,772	284,547	124,252	5.2	-4.7
Canada	62,425	47,685	2,436	4,694	54,815	24,910	1.0	-12.2
Mexico	8,182	7,754	84	140	7,978	3,940	0.1	-2.5
United States of America	227,919	179,616	9,200	32,938	221,754	95,402	4.1	-2.7
Central America	1,198	1,575	150	66	1,791	715	0.0	49.5
Costa Rica	883	1,226	108	30	1,364	540	0.0	54.5
Honduras	163	129	21	17	167	59	0.0	2.5
Jamaica	152	220	21	19	260	116	0.0	71.1
South America	47,200	39,135	1,275	617	41,027	20,741	0.8	-13.1
Argentina	16,290	10,307	37	86	10,430	5,659	0.2	-36.0
Brazil	15,598	11,298	218	284	11,800	5,793	0.2	-24.3
Chile	6,007	6,773	649	66	7,488	3,318	0.1	24.7
Colombia	4,468	6,879	265	62	7,206	3,901	0.1	61.3
Ecuador	842	671	27	32	730	377	0.0	-13.3
Peru	1,583	1,702	29	37	1,768	874	0.0	11.7
Uruguay	1,739	1,214	25	30	1,269	657	0.0	-27.0
Venezuela	673	291	25	20	336	162	0.0	-50.1
Other America	4,827	1,513	166	643	2,322	906	0.0	-51.9
Africa	10,881	9,834	1,136	504	11,474	4,890	0.2	5.4
North Africa	1,129	1,118	70	83	1,271	503	0.0	12.6
Morocco	734	735	29	32	796	358	0.0	8.4
Sudan	129	149	26	26	201	41	0.0	55.8
Tunisia	266	234	15	25	274	104	0.0	3.0
Subsaharan Africa	8,301	8,393	1,018	339	9,750	4,222	0.2	17.5
Cameroon	153	183	30	26	239	55	0.0	56.2
Congo	83	244	22	16	282	93	0.0	239.8
Ghana	270	429	24	25	478	169	0.0	77.0
Kenya	360	362	43	51	456	239	0.0	26.7
Liberia	56	1,227	56	90	1,373	526	0.0	2351.8
Nigeria	1,185	168	297	33	498	116	0.0	-58.0
South Africa	5,743	5,486	500	47	6,033	2,855	0.1	5.0
Tanzania	201	67	13	17	97	27	0.0	-51.7
Uganda	116	118	14	14	146	85	0.0	25.9
Zimbabwe	134	109	19	20	148	57	0.0	10.4
Other Africa	1,451	323	48	82	453	165	0.0	-68.8
Middle East	5,212	3,860	388	332	4,580	872	0.1	-12.1
Egypt	724	653	78	27	758	164	0.0	4.7
Iraq	250	469	51	31	551	73	0.0	120.4
Jordan	610	390	46	17	453	101	0.0	-25.7
Kuwait	477	370	26	33	429	64	0.0	-10.1
Oman	236	190	15	32	237	34	0.0	0.4
Palestine	108	88	25	20	133	19	0.0	23.1
Qatar	96	73	16	18	107	17	0.0	11.5
Saudi Arabia	238	244	16	26	286	29	0.0	20.2
Syria	513	400	26	23	449	66	0.0	-12.5
United Arab Emirates	230	156	37	29	222	38	0.0	-3.5
Yemen	576	573	20	18	611	157	0.0	6.1
Other Middle East	1,154	254	32	58	344	110	0.0	-70.2

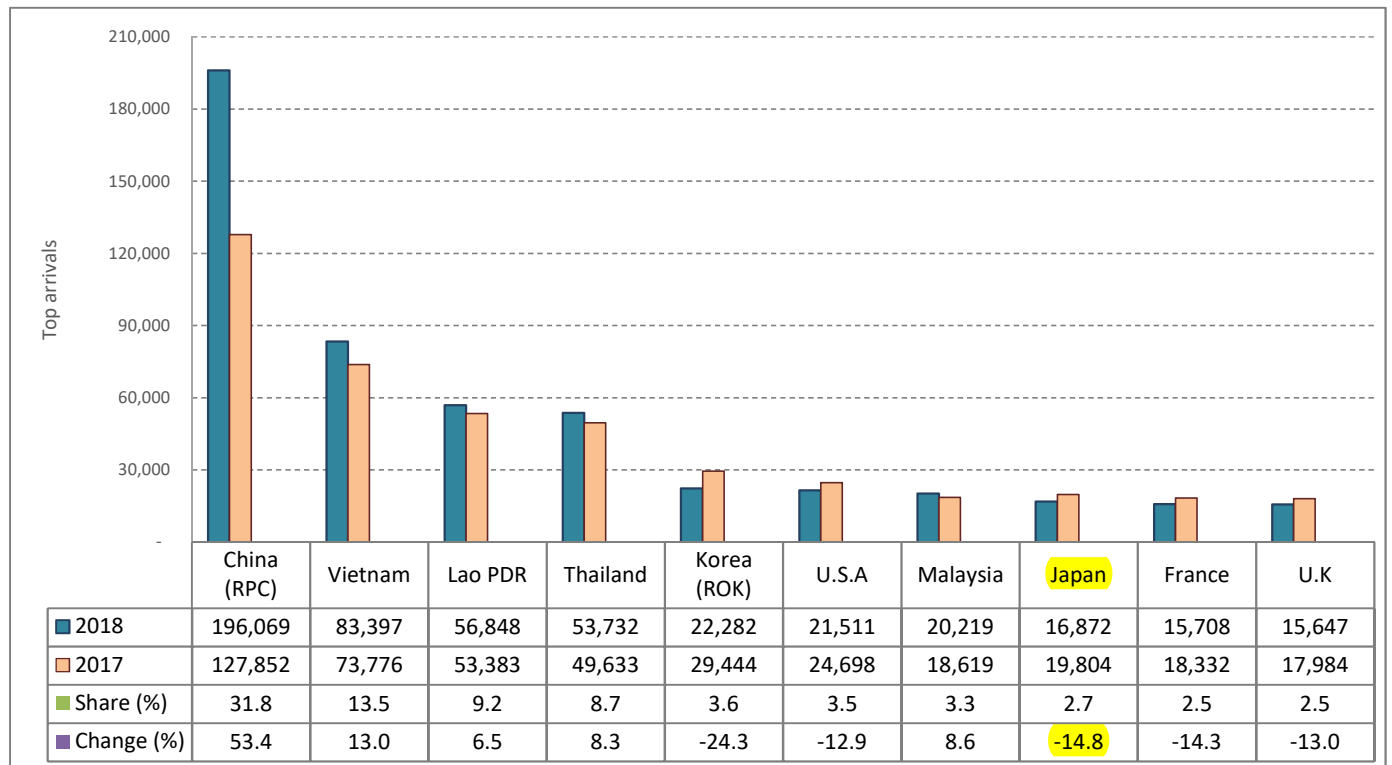
CAMBODIA: TOURISM STATISTICS REPORT IN NOVEMBER 2018

I. INBOUND TOURISM

1. International tourist arrivals in November 2018

	Inbound tourism			Share (%) 2018*	Change (%)	
	2016	2017	2018		17/16	2018*/17
Air	269,839	324,897	379,733	61.6	20.4	16.9
Phnom Penh Int'l Airport (PNH)	111,098	136,034	177,774	28.8	22.4	30.7
Siem Reap Int'l Airport (REP)	153,090	181,471	167,666	27.2	18.5	-7.6
Kong Keng (KOS)	5,651	7,392	34,293	5.6	30.8	363.9
Land and Waterways	207,847	245,574	236,816	38.4	18.2	-3.6
Land	192,823	233,247	218,832	35.5	21.0	-6.2
Waterways	15,024	12,327	17,984	2.9	-18.0	45.9
Total	477,686	570,471	616,549	100.0	19.4	8.1

2. Top ten markets arrivals in November 2018



II. OUTBOUND TOURISM

Outbound tourism in November 2018

	Outbound tourism			Change (%)	
	2016	2017	2018	17/16	2018*/17
Cambodian Outbound Tourists	123,723	146,254	171,628	18.2	17.3
International Tourists Departure	401,042	443,539	492,390	10.6	11.0

III. INTERNAL TOURISM

Foreign visitor arrivals to the regions in November 2018

	Arrivals			Share (%) 2018*	Change (%)	
	2016	2017	2018		17/16	2018*/17
Phnom Penh & Surrounding	257,769	321,240	383,424	54.3	24.6	19.4
Siem Reap Angkor	219,917	249,231	233,125	33.0	13.3	-6.5
Coastal Areas	50,727	59,159	84,292	11.9	16.6	42.5
Eco-tourism Areas	6,526	6,550	5,345	0.8	0.4	-18.4
Total	534,939	636,180	706,186	100.0	18.9	11.0

International Tourist Arrivals to Cambodia by Country of Residence in November 2018

(by all means of transportation)

Regions Country of Residence	2017	2018			Total	Female	Share	Change
		Purposes of Visit					2018*	2018*/17
		Holiday	Business	Others			(%)	(%)
Grand Total	570,471	530,749	70,671	15,129	616,549	227,763	100.0	8.1
Asia and the Pacific	436,244	432,734	66,403	8,603	507,740	178,889	82.4	16.4
ASEAN (Southeast Asia)	222,171	224,343	9,932	4,499	238,774	73,743	38.7	7.5
Brunei Darussalam	124	51	2	3	56	17	0.0	-54.8
Indonesia	5,200	3,296	1,651	56	5,003	1,121	0.8	-3.8
Lao PDR	53,383	55,737	156	955	56,848	17,464	9.2	6.5
Malaysia	18,619	18,286	1,294	639	20,219	5,829	3.3	8.6
Myanmar	1,587	2,189	338	43	2,570	711	0.4	61.9
Philippines	11,545	8,178	770	89	9,037	4,060	1.5	-21.7
Singapore	8,304	7,158	407	347	7,912	2,137	1.3	-4.7
Thailand	49,633	50,954	1,774	1,004	53,732	15,497	8.7	8.3
Vietnam	73,776	78,494	3,540	1,363	83,397	26,907	13.5	13.0
Northeast Asia	190,268	190,869	55,195	2,482	248,546	97,347	40.3	30.6
China	127,852	145,634	49,705	730	196,069	80,127	31.8	53.4
Hong Kong (China)	1,530	1,697	21	18	1,736	347	0.3	13.5
Japan	19,804	13,960	2,183	729	16,872	5,122	2.7	-14.8
Korea (ROK)	29,444	19,987	1,474	821	22,282	7,006	3.6	-24.3
Macau (China)	94	29	5	3	37	3	0.0	-60.6
Mongolia	64	45	2	4	51	18	0.0	-20.3
Taiwan (China)	11,480	9,517	1,805	177	11,499	4,724	1.9	0.2
Southern Asia	5,526	7,289	648	72	8,009	2,453	1.3	44.9
Afghanistan	25	24	2	2	28	7	0.0	12.0
Bangladesh	155	268	41	10	319	42	0.1	105.8
Bhutan	24	3	2	2	7	1	0.0	-70.8
India	4,698	5,530	417	32	5,979	2,001	1.0	27.3
Iran	65	491	3	2	496	126	0.1	663.1
Nepal	162	297	56	7	360	142	0.1	122.2
Pakistan	153	318	41	7	366	50	0.1	139.2
Sri Lanka	244	358	86	10	454	84	0.1	86.1
Oceania	15,345	10,106	592	1,493	12,191	5,263	2.0	-20.6
Australia	13,064	8,617	517	1,240	10,374	4,479	1.7	-20.6
Fiji	47	18	4	5	27	9	0.0	-42.6
New Zealand	2,234	1,471	71	248	1,790	775	0.3	-19.9
Other Asia & the Pacific	2,934	127	36	57	220	83	0.0	-92.5
Europe	93,640	70,110	2,595	2,477	75,182	34,034	12.2	-19.7
Northern Europe	23,633	19,130	779	235	20,144	8,047	3.3	-14.8
Denmark	1,103	831	35	21	887	818	0.1	-19.6
Finland	720	562	33	20	615	306	0.1	-14.6
Iceland	37	47	3	5	55	23	0.0	48.6
Ireland	1,218	947	41	7	995	442	0.2	-18.3
Norway	987	715	15	10	740	307	0.1	-25.0
Sweden	1,584	1,125	51	29	1,205	516	0.2	-23.9
United Kingdom	17,984	14,903	601	143	15,647	5,635	2.5	-13.0
Western Europe	41,391	30,131	1,184	2,014	33,329	15,060	5.4	-19.5
Austria	1,046	1,018	21	11	1,050	510	0.2	0.4
Belgium	2,210	1,698	62	41	1,801	777	0.3	-18.5
France	18,332	13,308	676	1,724	15,708	7,025	2.5	-14.3
Germany	13,821	9,825	216	124	10,165	4,731	1.6	-26.5
Luxembourg	87	46	7	5	58	21	0.0	-33.3
Monaco	6	4	2	3	9	3	0.0	50.0
Netherlands	3,467	2,426	114	41	2,581	1,138	0.4	-25.6
Switzerland	2,422	1,806	86	65	1,957	855	0.3	-19.2
Central / Eastern Europe	15,680	10,878	338	102	11,318	5,936	1.8	-27.8
Bulgaria	311	213	4	13	230	126	0.0	-26.0
Czech Republic	963	562	12	7	581	271	0.1	-39.7
Estonia	372	157	8	10	175	84	0.0	-53.0
Hungary	713	660	8	5	673	343	0.1	-5.6
Kazakhstan	222	90	21	6	117	63	0.0	-47.3
Kyrgyzstan	16	12	3	1	16	8	0.0	0.0
Latvia	214	115	8	7	130	64	0.0	-39.3
Lithuania	317	166	13	5	184	94	0.0	-42.0
Poland	2,981	2,536	29	7	2,572	1,295	0.4	-13.7
Romania	391	355	14	2	371	190	0.1	-5.1
Russian Federation	8,053	4,852	129	26	5,007	2,757	0.8	-37.8
Slovakia	521	462	6	4	472	230	0.1	-9.4
Ukraine	573	677	73	2	752	402	0.1	31.2
Uzbekistan	33	21	10	7	38	9	0.0	15.2

International Tourist Arrivals to Cambodia by Country of Residence in November 2018

(by all means of transportation)

Regions Country of Residence	2017	2018			Total	Female	Share	Change
		Purposes of Visit					2018*	2018*/17
		Holiday	Business	Others			(%)	(%)
Grand Total	570,471	530,749	70,671	15,129	616,549	227,763	100.0	8.1
Southern Europe	9,489	8,478	215	72	8,765	4,276	1.4	-7.6
Croatia	246	189	4	4	197	82	0.0	-19.9
Greece	173	134	5	5	144	64	0.0	-16.8
Italy	3,832	2,249	113	24	2,386	1,097	0.4	-37.7
Malta	35	11	2	3	16	5	0.0	-54.3
Portugal	1,037	768	14	5	787	403	0.1	-24.1
Serbia	86	97	7	6	110	44	0.0	27.9
Slovenia	197	148	8	4	160	70	0.0	-18.8
Spain	3,883	4,882	62	21	4,965	2,511	0.8	27.9
East Mediterranean Europe	1,789	1,408	56	35	1,499	664	0.2	-16.2
Israel	1,054	1,004	21	18	1,043	474	0.2	-1.0
Turkey	735	404	35	17	456	190	0.1	-38.0
Other Europe	1,658	85	23	19	127	51	0.0	-92.3
Americas	39,126	26,812	1,513	3,957	32,282	14,422	5.2	-17.5
North America	33,931	23,057	1,148	3,825	28,030	12,481	4.5	-17.4
Canada	8,215	4,883	231	520	5,634	2,643	0.9	-31.4
Mexico	1,018	836	18	31	885	454	0.1	-13.1
United States of America	24,698	17,338	899	3,274	21,511	9,384	3.5	-12.9
Central America	150	106	8	8	122	56	0.0	-18.7
Costa Rica	114	86	2	3	91	44	0.0	-20.2
Honduras	18	5	4	2	11	7	0.0	-38.9
Jamaica	18	15	2	3	20	5	0.0	11.1
South America	4,385	3,578	336	88	4,002	1,847	0.6	-8.7
Argentina	1,306	616	3	13	632	334	0.1	-51.6
Brazil	1,683	1,012	14	23	1,049	551	0.2	-37.7
Chile	406	1,055	275	11	1,341	483	0.2	230.3
Colombia	499	479	15	12	506	265	0.1	1.4
Ecuador	98	73	14	8	95	41	0.0	-3.1
Peru	192	185	3	5	193	94	0.0	0.5
Uruguay	165	94	10	11	115	39	0.0	-30.3
Venezuela	36	64	2	5	71	40	0.0	97.2
Other America	660	71	21	36	128	38	0.0	-80.6
Africa	931	776	105	48	929	349	0.2	-0.2
North Africa	135	77	9	9	95	29	0.0	-29.6
Morocco	105	46	2	4	52	20	0.0	-50.5
Sudan	14	15	4	3	22	4	0.0	57.1
Tunisia	16	16	3	2	21	5	0.0	31.3
Subsaharan Africa	610	686	89	30	805	309	0.1	32.0
Cameroon	13	8	5	3	16	3	0.0	23.1
Congo	5	17	3	2	22	4	0.0	340.0
Ghana	8	89	2	5	96	29	0.0	1100.0
Kenya	31	33	7	4	44	25	0.0	41.9
Liberia	5	23	2	5	30	8	0.0	500.0
Nigeria	19	15	25	3	43	12	0.0	126.3
South Africa	507	467	40	3	510	211	0.1	0.6
Tanzania	7	5	2	2	9	2	0.0	28.6
Uganda	8	18	1	1	20	12	0.0	150.0
Zimbabwe	7	11	2	2	15	3	0.0	114.3
Other Africa	186	13	7	9	29	11	0.0	-84.4
Middle East	530	317	55	44	416	69	0.1	-21.5
Egypt	59	66	11	5	82	16	0.0	39.0
Iraq	16	12	4	3	19	2	0.0	18.8
Jordan	125	51	5	2	58	9	0.0	-53.6
Kuwait	23	27	6	4	37	3	0.0	60.9
Oman	22	9	2	3	14	1	0.0	-36.4
Palestine	4	9	2	2	13	3	0.0	225.0
Qatar	4	15	4	4	23	3	0.0	475.0
Saudi Arabia	17	19	3	2	24	2	0.0	41.2
Syria	37	36	5	3	44	7	0.0	18.9
United Arab Emirates	26	17	7	5	29	5	0.0	11.5
Yemen	38	47	2	3	52	12	0.0	36.8
Other Middle East	159	9	4	8	21	6	0.0	-86.8