



**KINGDOM OF CAMBODIA
NATION RELIGION KING**



TOURISM STATISTICAL REPORT

2007

MINISTRY OF TOURISM

Statistics and Tourism Information Department
#3, Preah Monivong Blvd., Phnom Penh 12258, Kingdom of Cambodia.
Tel.: +855 23 211593 / Fax: +855 23 212837
Email: info@mot.gov.kh
Website: www.mot.gov.kh

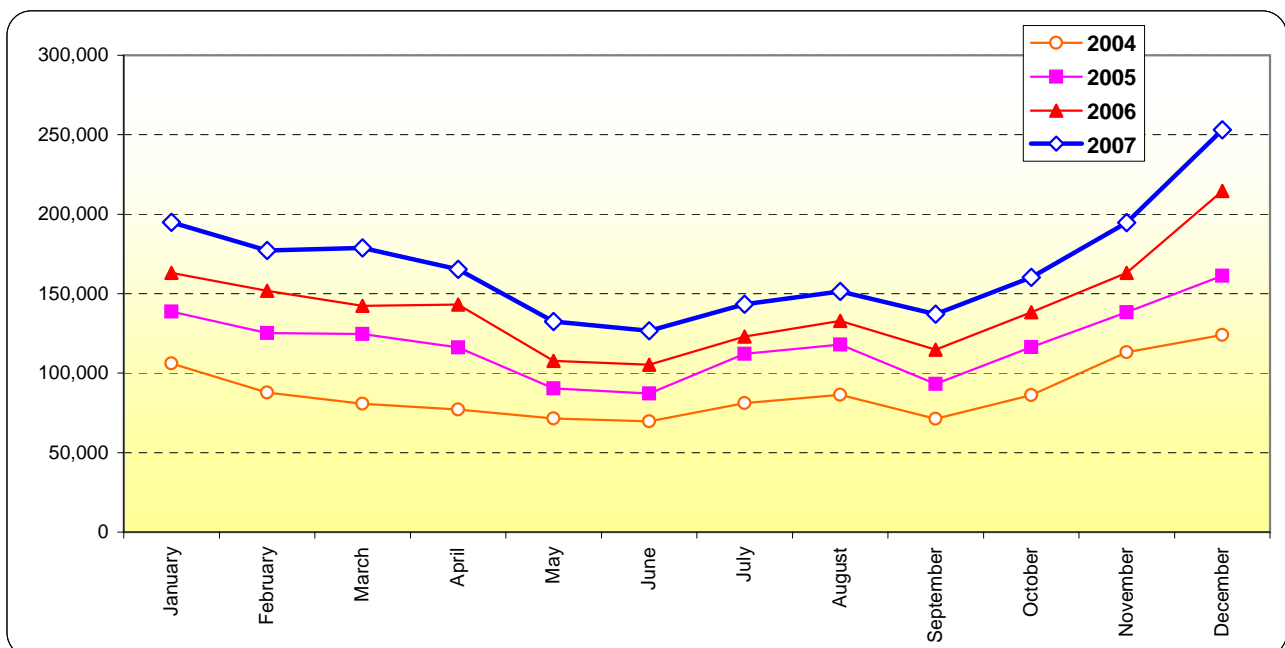
Tourism Highlights

Visitor Arrivals, Average Length of Stay, Hotels Occupancy and Tourism Receipts 1993 - 2007

Years	Visitor Arrivals		Average Length of Stay (days)	Hotels Occupancy (%)	Tourism Receipts (million US\$)
	number	change (%)			
1993	118,183	0.00	N/A	N/A	N/A
1994	176,617	49.44%	N/A	N/A	N/A
1995	219,680	24.38%	8.00	37.00	100
1996	260,489	18.58%	7.50	40.00	118
1997	218,843	-15.99%	6.40	30.00	103
1998	289,524	32.30%	5.20	40.00	166
1999	367,743	27.02%	5.50	44.00	190
2000	466,365	26.82%	5.50	45.00	228
2001	604,919	29.71%	5.50	48.00	304
2002	786,524	30.02%	5.80	50.00	379
2003	701,014	-10.87%	5.50	50.00	347
2004	1,055,202	50.53%	6.30	52.00	578
2005	1,421,615	34.72%	6.30	52.00	832
2006	1,700,041	19.59%	6.50	54.79	1,049
2007	2,015,128	18.53%	6.50	54.79	1,400

International visitor arrivals to Cambodia

Destination	Months	2004	2005	2006	2007	Change(%) 2007*/06
Cambodia	January	106,200	138,718	163,047	194,932	19.56%
January - October	February	87,795	125,326	151,821	177,130	16.67%
<i>(all means of transportation, include same-day visitors)</i>	March	80,765	124,626	142,437	178,751	25.49%
	April	77,105	116,219	143,069	165,347	15.57%
	May	71,486	90,314	107,720	132,512	23.02%
	June	69,595	87,228	105,298	126,677	20.30%
	July	81,223	112,116	123,047	143,310	16.47%
	August	86,450	117,943	132,792	151,478	14.07%
	September	71,209	93,158	114,781	137,027	19.38%
	October	86,121	116,382	138,296	160,235	15.86%
	November	113,195	138,293	163,068	194,646	19.36%
	December	124,058	161,292	214,665	253,083	17.90%
	Total	1,055,202	1,421,615	1,700,041	2,015,128	18.53%



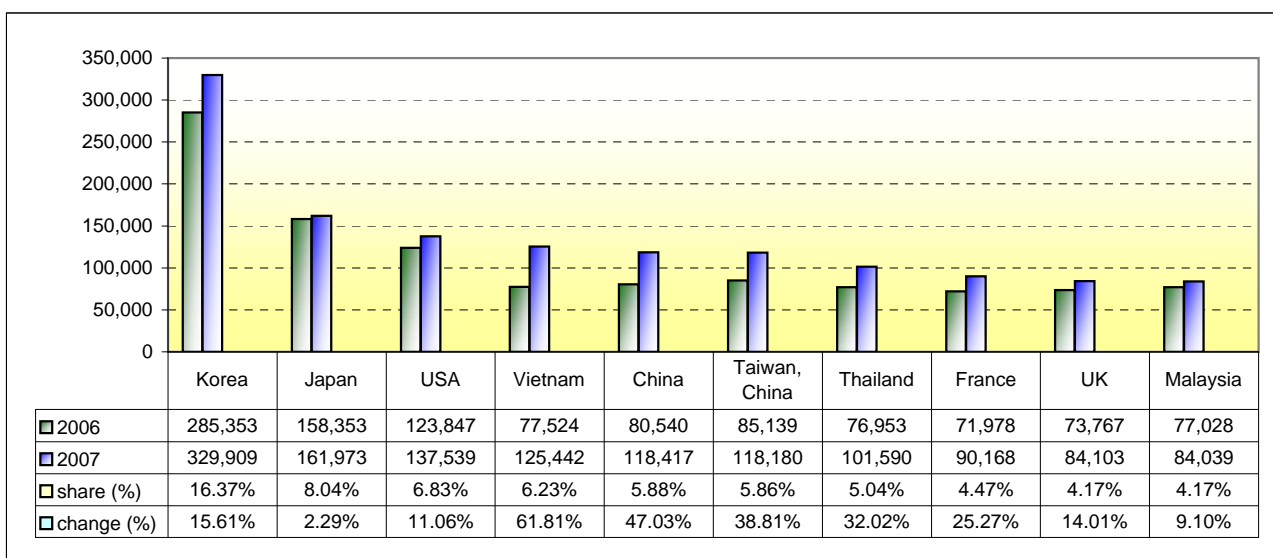
Executive Summary in 2007

I. Visitor arrivals to Cambodia from Jan - Dec was: **2,015,128**

II Mode of arrivals

	visitors	share (%)
- Air	1,296,513	64.34
Phnom Penh Int'l Airport	535,262	26.56
Siem Reap Int'l Airport	761,251	37.78
- Land and Water ways	576,054	28.59
Land	532,366	26.42
Boat	43,688	2.17
- Same-day visitors	142,561	7.07
Total	2,015,128	100.00

III. Top ten markets arrivals to Cambodia from Jan - Dec in 2007



IV. Visitor arrivals to Cambodia from Jan - Dec 2006 - 2007

Visitor arrivals			share (%)		change (%)
	2006	2007	2006	2007*	2007*/06
Air	1,027,064	1,296,513	60.41	64.34	26.23
Phnom Penh Int'l Airport	427,389	535,262	25.14	26.56	25.24
Siem Reap Int'l Airport	599,675	761,251	35.27	37.78	26.94
Land and Water ways	564,286	576,054	33.19	28.59	2.09
Land	524,501	532,366	30.85	26.42	1.50
Boat	39,785	43,688	2.34	2.17	9.81
Sub-Total	1,591,350	1,872,567	93.61	92.93	17.67
Same-day visitors	108,691	142,561	6.39	7.07	31.16
Total	1,700,041	2,015,128	100.00	100.00	18.53

V. Remark: Percentage share of visitor arrivals at destination from Jan - Dec 2007

Visitor arrivals			share (%)		change (%)
	2006	2007	2006	2007*	2007*/06
Phnom Penh & Other Destinations	843,531	894,542	49.62%	44.39%	6.05%
Siem Reap Province	856,510	1,120,586	50.38%	55.61%	30.83%
Total	1,700,041	2,015,128	100.00%	100.00%	18.53%

Visitor Arrivals to Cambodia by Country of Residence from January - December in 2007

(by all means of transportation)

Regions Country of Residence	2007						share	change
	2006	Purpose of Visit			Total	Females	(%)	(%)
		Holiday	Business	Others			2007*	2007*/06
GRAND TOTAL	1,700,041	1,689,976	145,774	36,817	2,015,128	924,962	100.00%	18.53%
Asia and the Pacific	1,031,426	1,112,478	122,166	21,377	1,256,021	607,074	62.33%	21.78%
ASEAN	328,459	343,017	56,094	11,021	410,132	218,921	20.35%	24.87%
Brunei Darussalam	388	169	13	158	340	101	0.02%	-12.37%
Indonesia	7,372	5,131	2,938	474	8,543	3,260	0.42%	15.88%
Laos	7,082	22,435	92	533	23,060	14,570	1.14%	225.61%
Malaysia	77,028	79,701	4,062	276	84,039	31,103	4.17%	9.10%
Myanmar	1,766	1,269	358	154	1,781	702	0.09%	0.85%
Philippines	49,707	24,777	3,826	931	29,534	16,767	1.47%	-40.58%
Singapore	30,639	33,852	1,735	216	35,803	12,819	1.78%	16.85%
Thailand	76,953	85,439	12,909	3,242	101,590	50,711	5.04%	32.02%
Vietnam	77,524	90,244	30,161	5,037	125,442	88,888	6.23%	61.81%
Eastern Asia	612,305	667,151	57,725	6,516	731,392	345,014	36.30%	19.45%
China	80,540	84,691	32,084	1,642	118,417	49,013	5.88%	47.03%
Hong Kong, China	2,920	2,360	369	2	2,731	997	0.14%	-6.47%
Japan	158,353	154,441	4,762	2,770	161,973	79,084	8.04%	2.29%
Mongolia		144	16	22	182	91	0.01%	
South Korea	285,353	315,721	12,173	2,015	329,909	158,911	16.37%	15.61%
Taiwan, China	85,139	109,794	8,321	65	118,180	56,918	5.86%	38.81%
Southern Asia	9,245	10,032	2,967	1,140	14,139	3,391	0.70%	52.94%
Afghanistan		14	6	13	33	5	0.00%	
Bangladesh		364	149	146	659	116	0.03%	
India	8,690	8,415	2,355	684	11,454	2,821	0.57%	31.81%
Nepal		491	168	71	730	199	0.04%	
Pakistan		348	76	139	563	89	0.03%	
Srilanka	555	400	213	87	700	161	0.03%	26.13%
Oceania	67,668	76,154	5,242	2,553	83,949	37,210	4.17%	24.06%
Australia	56,945	64,993	4,426	2,197	71,616	32,130	3.55%	25.76%
New Zealand	10,723	11,161	816	356	12,333	5,080	0.61%	15.01%
Others Asia & the Pacific	13,749	16,124	138	147	16,409	2,538	0.81%	
Europe	314,194	386,268	15,032	9,343	410,643	162,279	20.38%	30.70%
Northern Europe	110,268	125,253	5,720	2,973	133,946	50,136	6.65%	21.47%
Denmark	6,592	7,942	304	231	8,477	3,346	0.42%	28.60%
Finland	3,565	5,288	181	171	5,640	2,000	0.28%	58.20%
Iceland		211	1	2	214	44	0.01%	
Ireland	8,347	9,872	230	158	10,260	4,420	0.51%	22.92%
Norway	5,024	6,243	287	101	6,631	2,496	0.33%	31.99%
Sweden	12,973	17,761	498	362	18,621	7,666	0.92%	43.54%
United Kingdom	73,767	77,936	4,219	1,948	84,103	30,164	4.17%	14.01%
Western Europe	155,877	183,789	7,752	5,100	196,641	81,127	9.76%	26.15%
Austria	5,046	6,663	88	44	6,795	2,703	0.34%	34.66%
Belgium	10,538	11,103	486	449	12,038	4,757	0.60%	14.23%
France	71,978	82,619	4,790	2,759	90,168	39,273	4.47%	25.27%
Germany	40,113	50,727	1,291	1,069	53,087	20,383	2.63%	32.34%
Luxembourg		468	7	14	489	198	0.02%	
Netherlands	17,019	19,622	651	500	20,773	8,625	1.03%	22.06%
Switzerland	11,183	12,587	439	265	13,291	5,188	0.66%	18.85%
Eastern Europe	5,779	20,848	583	450	21,881	10,008	1.09%	
Bulgaria		1,498	59	48	1,605	644	0.08%	
Czech		1,835	12	60	1,907	737	0.09%	
Hungary		2,177	43	26	2,246	1,010	0.11%	
Poland		3,828	22	45	3,895	1,735	0.19%	
Romania		356	42	24	422	186	0.02%	
Russia	5,779	9,399	322	201	9,922	4,832	0.49%	71.69%
Slovakia		552	16	26	594	282	0.03%	
Ukraine		1,203	67	20	1,290	582	0.06%	
Southern Europe	28,055	40,447	850	698	41,995	18,554	2.08%	
Croatia		195	12	9	216	89	0.01%	
Greece		1,267	10	14	1,291	558	0.06%	
Italy	13,899	17,317	401	359	18,077	7,080	0.90%	30.06%
Portugal		2,448	61	33	2,542	1,234	0.13%	
Slovenia		619	6	14	639	298	0.03%	
Spain	14,156	17,182	223	187	17,592	8,737	0.87%	24.27%
Turkey		1,419	137	82	1,638	558	0.08%	
Others Europe	14,215	15,931	127	122	16,180	2,454	0.80%	

Visitor Arrivals to Cambodia by Country of Residence from January - December in 2007

(by all means of transportation)

Regions Country of Residence	2006		2007			Total	Females	share	change
	Purpose of Visit			2007*	2007*/06				
	Holiday	Business	Others			(%)			
GRAND TOTAL	1,700,041	1,689,976	145,774	36,817	2,015,128	924,962	100.00%	18.53%	
Americas	159,429	180,894	8,050	5,762	194,706	80,913	9.66%	22.13%	
Argentina		1,138	7	17	1,162	547	0.06%		
Brazil		1,545	18	22	1,585	803	0.08%		
Canada	28,017	31,697	1,435	876	34,008	15,000	1.69%	21.38%	
Chile		1,559	6	15	1,580	767	0.08%		
Colombia		653	9	28	690	341	0.03%		
Mexico		3,371	38	27	3,436	1,711	0.17%		
Peru		323	0	13	336	157	0.02%		
United States	123,847	126,440	6,445	4,654	137,539	59,345	6.83%	11.06%	
Uruguay		268		1	269	108	0.01%		
Others Americas	7,565	13,900	92	109	14,101	2,134	0.70%		
Africa	0	2,710	374	186	3,270	1,073	0.16%		
Cameroon		119	4	10	133	20	0.01%		
Ghana		135	12	7	154	11	0.01%		
Nigeria		478	125	26	629	69	0.03%		
Sudan		3	1	2	6	2	0.00%		
South Africa		1,524	207	67	1,798	787	0.09%		
Others Africa		451	25	74	550	184	0.03%		
Middle East	86,301	7,626	152	149	7,927	3,101	0.39%		
Egypt		74	3		77	8	0.00%		
Iran		388	13	14	415	82	0.02%		
Israel		6,299	111	43	6,453	2,824	0.32%		
Kuwait		409	0	1	410	17	0.02%		
Palestine					0		0.00%		
Saudi Arabia		54	6	33	93	21	0.00%		
United Arab Emirates					0		0.00%		
Others Middle East	86,301	402	19	58	479	149	0.02%		
Same-day visitors	108,691				142,561	70,522	7.07%	31.16%	

Remark:

- Cambodian Overseas: 88,799
- Cambodian Residence:: 248,910

COMPILED BY:

1. Mr. Kong Sopheareak

Director
Statistics & Tourism Information Department
Tel.: +855 23 211593
E-mail: kong@mot.gov.kh

2. Mr. Horth Vanny

Chief of Tourism Statistics Office
Compile and data analysis
Tel.: +855 12 827664