



**KINGDOM OF CAMBODIA  
NATION RELIGION KING**



# **TOURISM STATISTICAL REPORT**

# **2008**

**MINISTRY OF TOURISM**

Statistics and Tourism Information Department

No. 63, Street 348, Sangkat Toul Svay Prey II, Phnom Penh, Kingdom of Cambodia.

Tel.: +855 23 211593 / Fax: +855 23 212837

Email: [info@mot.gov.kh](mailto:info@mot.gov.kh)

Website: [www.mot.gov.kh](http://www.mot.gov.kh)

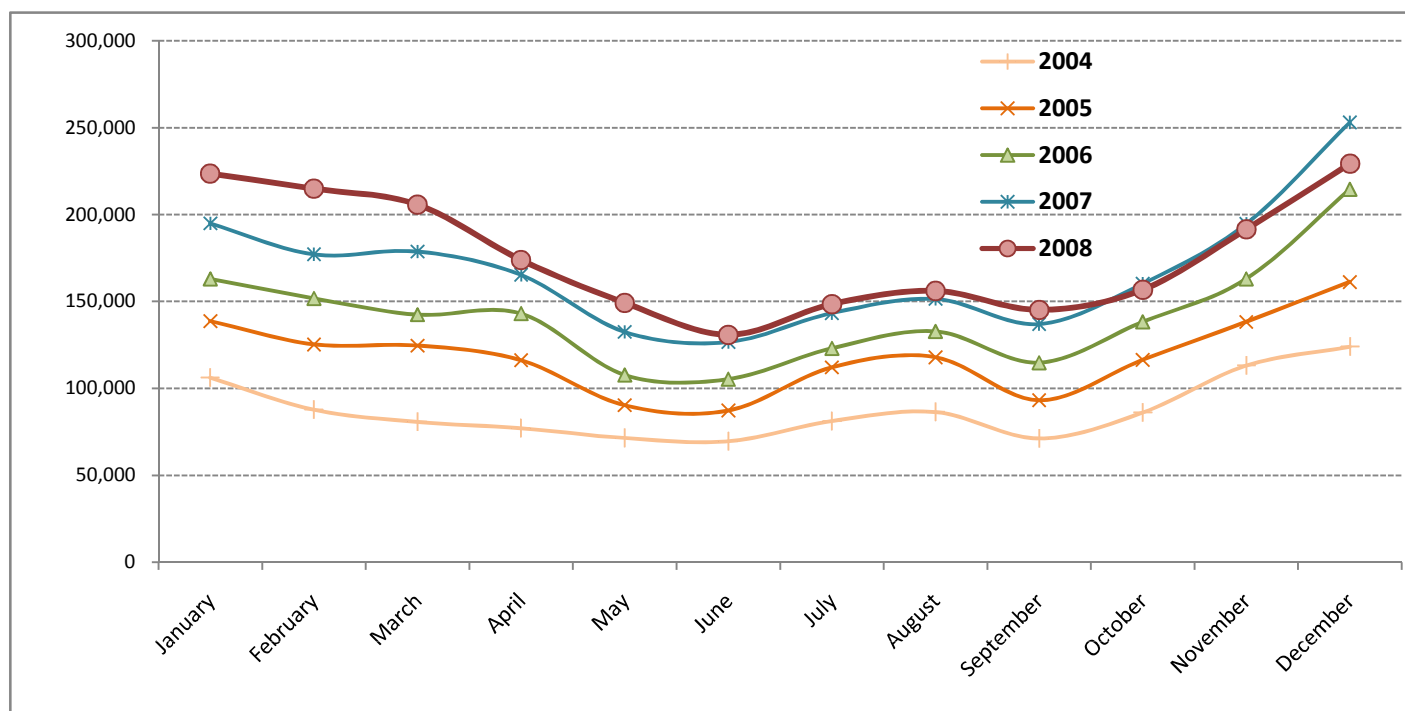
## Tourism Highlights

### Visitor Arrivals, Average Length of Stay, Hotels Occupancy and Tourism Receipts 1993 - 2008

Years	Visitor Arrivals		Average Length of Stay (days)	Hotels Occupancy (%)	Tourism Receipts (million US\$)
	number	change (%)			
1993	118,183	0.00	N/A	N/A	N/A
1994	176,617	49.44%	N/A	N/A	N/A
1995	219,680	24.38%	8.00	37.00	100
1996	260,489	18.58%	7.50	40.00	118
1997	218,843	-15.99%	6.40	30.00	103
1998	289,524	32.30%	5.20	40.00	166
1999	367,743	27.02%	5.50	44.00	190
2000	466,365	26.82%	5.50	45.00	228
2001	604,919	29.71%	5.50	48.00	304
2002	786,524	30.02%	5.80	50.00	379
2003	701,014	-10.87%	5.50	50.00	347
2004	1,055,202	50.53%	6.30	52.00	578
2005	1,421,615	34.72%	6.30	52.00	832
2006	1,700,041	19.59%	6.50	54.79	1,049
2007	2,015,128	18.53%	6.50	54.79	1,400
2008	2,125,465	5.48%	6.65	62.68	1,595

### International visitor arrivals to Cambodia

Destination	Months	2004	2005	2006	2007	2008	change(%) 2008*/07
<b>Cambodia</b>	January	106,200	138,718	163,047	194,932	223,581	14.70%
<i>(all means of transportation, include same-day visitors)</i>	February	87,795	125,326	151,821	177,130	214,902	21.32%
	March	80,765	124,626	142,437	178,751	205,722	15.09%
	April	77,105	116,219	143,069	165,347	173,903	5.17%
	May	71,486	90,314	107,720	132,512	149,275	12.65%
	June	69,595	87,228	105,298	126,677	130,853	3.30%
	July	81,223	112,116	123,047	143,310	148,449	3.59%
	August	86,450	117,943	132,792	151,478	156,098	3.05%
	September	71,209	93,158	114,781	137,027	145,146	5.93%
	October	86,121	116,382	138,296	160,235	156,718	-2.19%
	November	113,195	138,293	163,068	194,646	191,549	-1.59%
	December	124,058	161,292	214,665	253,083	229,269	-9.41%
	<b>Total</b>	<b>1,055,202</b>	<b>1,421,615</b>	<b>1,700,041</b>	<b>2,015,128</b>	<b>2,125,465</b>	<b>5.48%</b>



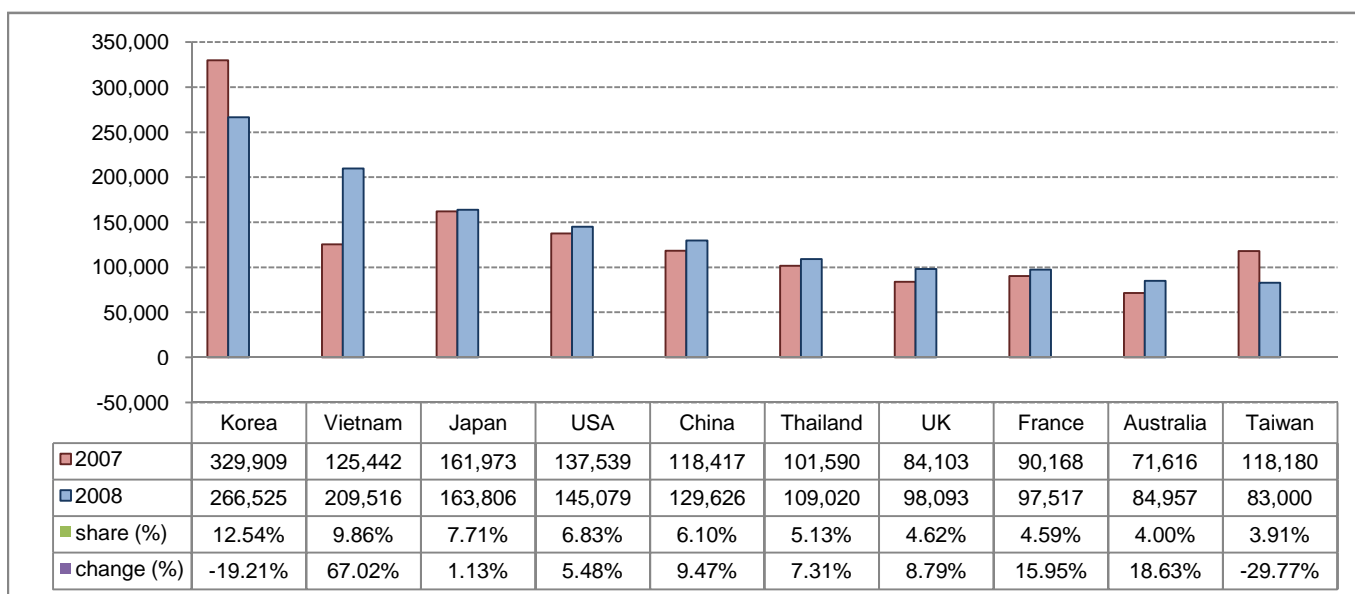
## Executive Summary from January - December in 2008

I. Visitor arrivals to Cambodia from Jan - Dec was: **2,125,465**

### II Mode of arrivals

	visitors	share (%)
<b>- Air</b>	<b>1,239,407</b>	<b>58.31</b>
Phnom Penh Int'l Airport	570,903	26.86
Siem Reap Int'l Airport	668,504	31.45
<b>- Land and Water ways</b>	<b>762,027</b>	<b>35.85</b>
Land	690,138	32.47
Boat	71,889	3.38
- Same-day visitors	124,031	5.84
<b>Total</b>	<b>2,125,465</b>	<b>100.00</b>

### III. Top ten markets arrivals to Cambodia from Jan - Dec in 2008



### IV. Visitor arrivals to Cambodia from Jan - Dec 2007 - 2008

Visitor arrivals			share (%)		change (%)
	2007	2008	2007	2008*	2008*/07
<b>Air</b>	<b>1,296,513</b>	<b>1,239,407</b>	<b>64.34</b>	<b>58.31</b>	<b>-4.40</b>
Phnom Penh Int'l Airport	535,262	570,903	26.56	26.86	6.66
Siem Reap Int'l Airport	761,251	668,504	37.78	31.45	-12.18
<b>Land and Water ways</b>	<b>576,054</b>	<b>762,027</b>	<b>28.59</b>	<b>35.85</b>	<b>32.28</b>
Land	532,366	690,138	26.42	32.47	29.64
Boat	43,688	71,889	2.17	3.38	64.55
<b>Sub-Total</b>	<b>1,872,567</b>	<b>2,001,434</b>	<b>92.93</b>	<b>94.16</b>	<b>6.88</b>
Same-day visitors	142,561	124,031	7.07	5.84	-13.00
<b>Total</b>	<b>2,015,128</b>	<b>2,125,465</b>	<b>100.00</b>	<b>100.00</b>	<b>5.48</b>

### V. Remark: Percentage share of visitor arrivals at destination from Jan - Dec 2008

Visitor arrivals			share (%)		change (%)
	2007	2008	2007	2008*	2008*/07
Phnom Penh & Other Destinations	894,542	1,065,595	44.39%	50.13%	19.12%
Siem Reap Province	1,120,586	1,059,870	55.61%	49.87%	-5.42%
<b>Total</b>	<b>2,015,128</b>	<b>2,125,465</b>	<b>100.00%</b>	<b>100.00%</b>	<b>5.48%</b>

## Visitor arrivals to Cambodia by purpose of visit in 2008

(by all means of transportation)

Regions Country of Residence	2007	2008			Total	females	share (%) 2008*	change (%) 2008*07
		purpose of visit						
		holiday	business	others				
<b>GRAND TOTAL</b>	<b>2,015,128</b>	<b>1,808,303</b>	<b>158,776</b>	<b>34,355</b>	<b>2,125,465</b>	<b>926,763</b>	<b>100.00%</b>	<b>5.48%</b>
<b>Asia and the Pacific</b>	<b>1,256,021</b>	<b>1,176,714</b>	<b>132,385</b>	<b>18,571</b>	<b>1,327,670</b>	<b>599,997</b>	<b>62.46%</b>	<b>5.70%</b>
<b>ASEAN</b>	<b>410,132</b>	<b>481,874</b>	<b>61,040</b>	<b>9,547</b>	<b>552,461</b>	<b>259,610</b>	<b>25.99%</b>	<b>34.70%</b>
Brunei Darussalam	340	248	14	94	356	139	0.02%	4.71%
Indonesia	8,543	5,513	3,335	350	9,198	3,594	0.43%	7.67%
Laos	23,060	60,413	122	398	60,933	41,722	2.87%	164.24%
Malaysia	84,039	75,624	4,844	270	80,738	31,235	3.80%	-3.93%
Myanmar	1,781	1,843	476	142	2,461	879	0.12%	38.18%
Philippines	29,534	33,392	4,858	1,044	39,294	23,577	1.85%	33.05%
Singapore	35,803	38,917	1,850	178	40,945	14,621	1.93%	14.36%
Thailand	101,590	92,208	14,413	2,399	109,020	39,480	5.13%	7.31%
Vietnam	125,442	173,716	31,128	4,672	209,516	104,363	9.86%	67.02%
<b>Eastern Asia</b>	<b>731,392</b>	<b>579,345</b>	<b>61,500</b>	<b>5,587</b>	<b>646,432</b>	<b>292,068</b>	<b>30.41%</b>	<b>-11.62%</b>
China	118,417	95,270	33,044	1,312	129,626	53,299	6.10%	9.47%
Hong Kong, China	2,731	2,715	603	2	3,320	1,146	0.16%	21.57%
Japan	161,973	156,434	4,831	2,541	163,806	77,567	7.71%	1.13%
Mongolia	182	130	8	17	155	64	0.01%	-14.84%
South Korea	329,909	249,845	15,069	1,611	266,525	123,521	12.54%	-19.21%
Taiwan, China	118,180	74,951	7,945	104	83,000	36,471	3.91%	-29.77%
<b>Southern Asia</b>	<b>14,139</b>	<b>10,808</b>	<b>3,679</b>	<b>965</b>	<b>15,452</b>	<b>3,713</b>	<b>0.73%</b>	<b>9.29%</b>
Afghanistan	33	22		18	40	9	0.00%	21.21%
Bangladesh	659	373	219	116	708	106	0.03%	7.44%
India	11,454	9,010	2,929	528	12,467	3,101	0.59%	8.84%
Nepal	730	633	195	101	929	221	0.04%	27.26%
Pakistan	563	360	104	113	577	69	0.03%	2.49%
Sri Lanka	700	410	232	89	731	207	0.03%	4.43%
<b>Oceania</b>	<b>83,949</b>	<b>91,152</b>	<b>5,688</b>	<b>2,247</b>	<b>99,087</b>	<b>43,209</b>	<b>4.66%</b>	<b>18.03%</b>
Australia	71,616	78,189	4,835	1,933	84,957	37,412	4.00%	18.63%
New Zealand	12,333	12,963	853	314	14,130	5,797	0.66%	14.57%
Others Asia & the Pacific	16,409	13,535	478	225	14,238	1,397	0.67%	-13.23%
<b>Europe</b>	<b>410,643</b>	<b>431,286</b>	<b>16,625</b>	<b>9,560</b>	<b>457,471</b>	<b>181,168</b>	<b>21.52%</b>	<b>11.40%</b>
<b>Northern Europe</b>	<b>133,946</b>	<b>144,487</b>	<b>6,128</b>	<b>2,761</b>	<b>153,376</b>	<b>58,527</b>	<b>7.22%</b>	<b>14.51%</b>
Denmark	8,477	8,855	275	241	9,371	3,627	0.44%	10.55%
Finland	5,640	6,421	207	205	6,833	2,346	0.32%	21.15%
Iceland	214	271	3		274	102	0.01%	28.04%
Ireland	10,260	10,780	282	193	11,255	4,761	0.53%	9.70%
Norway	6,631	7,507	247	121	7,875	2,957	0.37%	18.76%
Sweden	18,621	18,862	492	321	19,675	8,198	0.93%	5.66%
United Kingdom	84,103	91,791	4,622	1,680	98,093	36,536	4.62%	16.63%
<b>Western Europe</b>	<b>196,641</b>	<b>201,355</b>	<b>8,482</b>	<b>5,390</b>	<b>215,227</b>	<b>88,181</b>	<b>10.13%</b>	<b>9.45%</b>
Austria	6,795	7,127	90	59	7,276	3,009	0.34%	7.08%
Belgium	12,038	12,244	469	466	13,179	5,247	0.62%	9.48%
France	90,168	89,306	5,300	2,911	97,517	40,943	4.59%	8.15%
Germany	53,087	57,350	1,397	1,156	59,903	23,877	2.82%	12.84%
Luxembourg	489	457	8	21	486	187	0.02%	-0.61%
Netherlands	20,773	21,175	738	495	22,408	9,140	1.05%	7.87%
Switzerland	13,291	13,696	480	282	14,458	5,778	0.68%	8.78%
<b>Eastern Europe</b>	<b>21,881</b>	<b>29,155</b>	<b>683</b>	<b>381</b>	<b>30,219</b>	<b>14,197</b>	<b>1.42%</b>	<b>38.11%</b>
Bulgaria	1,605	301	11	10	322	141	0.02%	-79.94%
Czech	1,907	2,052	33	62	2,147	885	0.10%	12.59%
Hungary	2,246	2,104	56	33	2,193	987	0.10%	-2.36%
Poland	3,895	5,536	44	50	5,630	2,671	0.26%	44.54%
Romania	422	526	34	9	569	314	0.03%	34.83%
Russia	9,922	16,338	419	170	16,927	8,149	0.80%	70.60%
Slovakia	594	709	18	35	762	306	0.04%	28.28%
Ukraine	1,290	1,589	68	12	1,669	744	0.08%	29.38%
<b>Southern Europe</b>	<b>41,995</b>	<b>43,043</b>	<b>906</b>	<b>846</b>	<b>44,795</b>	<b>19,002</b>	<b>2.11%</b>	<b>6.67%</b>
Croatia	216	329	7	19	355	154	0.02%	64.35%
Greece	1,291	1,372	24	45	1,441	507	0.07%	11.62%
Italy	18,077	18,788	376	352	19,516	7,468	0.92%	7.96%
Portugal	2,542	2,177	65	42	2,284	1,043	0.11%	-10.15%
Slovenia	639	870	13	8	891	408	0.04%	39.44%
Spain	17,592	17,870	236	238	18,344	8,737	0.86%	4.27%
Turkey	1,638	1,637	185	142	1,964	685	0.09%	19.90%
Others Europe	16,180	13,246	426	182	13,854	1,261	0.65%	-14.38%

## Visitor arrivals to Cambodia by purpose of visit in 2008

(by all means of transportation)

Regions Country of Residence	2007	2008			Total	females	share	change
		purpose of visit					(%)	(%)
		holiday	business	others			2008*	2008*/07
<b>GRAND TOTAL</b>	<b>2,015,128</b>	<b>1,808,303</b>	<b>158,776</b>	<b>34,355</b>	<b>2,125,465</b>	<b>926,763</b>	<b>100.00%</b>	<b>5.48%</b>
<b>Americas</b>	<b>194,706</b>	<b>189,838</b>	<b>9,142</b>	<b>5,898</b>	<b>204,878</b>	<b>83,407</b>	<b>9.64%</b>	<b>5.22%</b>
Argentina	1,162	1,559	28	58	1,645	751	0.08%	41.57%
Brazil	1,585	1,951	30	77	2,058	991	0.10%	29.84%
Canada	34,008	34,405	1,669	817	36,891	16,129	1.74%	8.48%
Chile	1,580	1,596	26	17	1,639	819	0.08%	3.73%
Colombia	690	733	9	43	785	355	0.04%	13.77%
Mexico	3,436	3,299	35	45	3,379	1,681	0.16%	-1.66%
Peru	336	356	5	27	388	201	0.02%	15.48%
United States	137,539	133,315	7,080	4,684	145,079	61,283	6.83%	5.48%
Uruguay	269	163	3	1	167	103	0.01%	-37.92%
Others Americas	14,101	12,461	257	129	12,847	1,094	0.60%	-8.89%
<b>Africa</b>	<b>3,270</b>	<b>3,454</b>	<b>452</b>	<b>134</b>	<b>4,040</b>	<b>1,219</b>	<b>0.19%</b>	<b>23.55%</b>
Cameroon	133	309	25	6	340	53	0.02%	155.64%
Ghana	154	107	17	8	132	22	0.01%	-14.29%
Nigeria	629	760	212	27	999	76	0.05%	58.82%
Sudan	6	24	7	7	38	7	0.00%	533.33%
South Africa	1,798	1,983	164	33	2,180	932	0.10%	21.25%
Others Africa	550	271	27	53	351	129	0.02%	-36.18%
<b>Middle East</b>	<b>7,927</b>	<b>7,011</b>	<b>172</b>	<b>192</b>	<b>7,375</b>	<b>2,599</b>	<b>0.35%</b>	<b>-6.96%</b>
Egypt	77	145	5	5	155	43	0.01%	101.30%
Iran	415	272	11	14	297	59	0.01%	-28.43%
Israel	6,453	5,870	133	128	6,131	2,386	0.29%	-4.99%
Kuwait	410	462	3	7	472	15	0.02%	15.12%
Palestine					0		0.00%	
Saudi Arabia	93	45	5	2	52	4	0.00%	-44.09%
United Arab Emirates					0		0.00%	
Others Middle East	479	217	15	36	268	92	0.01%	-44.05%
Same-day visitors	142,561				124,031	58,373	5.84%	-13.00%

**COMPILED BY:**

1. Mr. Kong Sopheareak

Director  
Statistics & Tourism Information Department  
Tel.: +855 23 211593  
E-mail: kong@mot.gov.kh

2. Mr. Horth Vanny

Chief of Tourism Statistics Office  
Compile and data analysis  
Tel.: +855 12 827664