



KINGDOM OF CAMBODIA  
NATION RELIGION KING



# TOURISM STATISTICS REPORT

# 2009

**MINISTRY OF TOURISM**

Statistics and Tourism Information Department

No. A3, Street 169, Sangkat Veal Vong, Khan 7 Makara, Phnom Penh, Cambodia.

Fax: +855 23 885003

E-mail: [info@mot.gov.kh](mailto:info@mot.gov.kh)

Web site: [www.mot.gov.kh](http://www.mot.gov.kh)

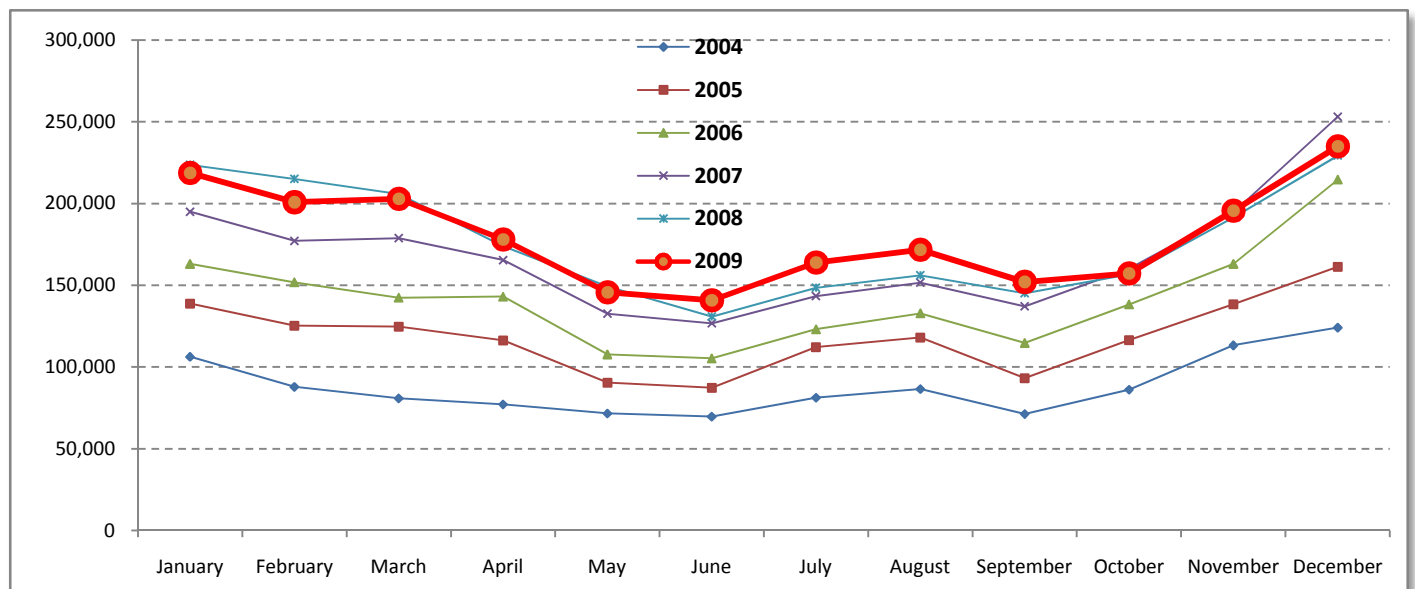
## Tourism Highlights

### Visitor Arrivals, Average Length of Stay, Hotels Occupancy and Tourism Receipts 1993 - 2008

Years	Visitor Arrivals		Average Length	Hotels Occupancy	Tourism Receipts
	number	change (%)	of Stay (days)	(%)	(million US\$)
1993	118,183	0.00	N/A	N/A	N/A
1994	176,617	49.44%	N/A	N/A	N/A
1995	219,680	24.38%	8.00	37.00	100
1996	260,489	18.58%	7.50	40.00	118
1997	218,843	-15.99%	6.40	30.00	103
1998	289,524	32.30%	5.20	40.00	166
1999	367,743	27.02%	5.50	44.00	190
2000	466,365	26.82%	5.50	45.00	228
2001	604,919	29.71%	5.50	48.00	304
2002	786,524	30.02%	5.80	50.00	379
2003	701,014	-10.87%	5.50	50.00	347
2004	1,055,202	50.53%	6.30	52.00	578
2005	1,421,615	34.72%	6.30	52.00	832
2006	1,700,041	19.59%	6.50	54.79	1,049
2007	2,015,128	18.53%	6.50	54.79	1,400
2008	2,125,465	5.48%	6.65	62.68	1,595
2009	2,161,577	1.70%	6.45	63.57	1,561

### International visitor arrivals to Cambodia

Destination	Months	2004	2005	2006	2007	2008	2009	change(%) 2009*/08
<b>Cambodia</b>	<b>Q1</b>	<b>274,760</b>	<b>388,670</b>	<b>457,305</b>	<b>550,813</b>	<b>644,205</b>	<b>622,288</b>	<b>-3.40%</b>
<i>Visitor arrivals by all means of transportation, include day visitors</i>	January	106,200	138,718	163,047	194,932	223,581	218,691	-2.19%
	February	87,795	125,326	151,821	177,130	214,902	200,789	-6.57%
	March	80,765	124,626	142,437	178,751	205,722	202,808	-1.42%
	<b>Q2</b>	<b>218,186</b>	<b>293,761</b>	<b>356,087</b>	<b>424,536</b>	<b>454,031</b>	<b>464,230</b>	<b>2.25%</b>
	April	77,105	116,219	143,069	165,347	173,903	177,955	2.33%
	May	71,486	90,314	107,720	132,512	149,275	145,564	-2.49%
	June	69,595	87,228	105,298	126,677	130,853	140,711	7.53%
	<b>Q3</b>	<b>238,882</b>	<b>323,217</b>	<b>370,620</b>	<b>431,815</b>	<b>449,693</b>	<b>487,422</b>	<b>8.39%</b>
	July	81,223	112,116	123,047	143,310	148,449	163,817	10.35%
	August	86,450	117,943	132,792	151,478	156,098	171,668	9.97%
	September	71,209	93,158	114,781	137,027	145,146	151,937	4.68%
	<b>Q4</b>	<b>323,374</b>	<b>415,967</b>	<b>516,029</b>	<b>607,964</b>	<b>577,536</b>	<b>587,637</b>	<b>1.75%</b>
	October	86,121	116,382	138,296	160,235	156,718	157,105	0.25%
	November	113,195	138,293	163,068	194,646	191,549	195,570	2.10%
	December	124,058	161,292	214,665	253,083	229,269	234,962	2.48%
	<b>Total</b>	<b>1,055,202</b>	<b>1,421,615</b>	<b>1,700,041</b>	<b>2,015,128</b>	<b>2,125,465</b>	<b>2,161,577</b>	<b>1.70%</b>



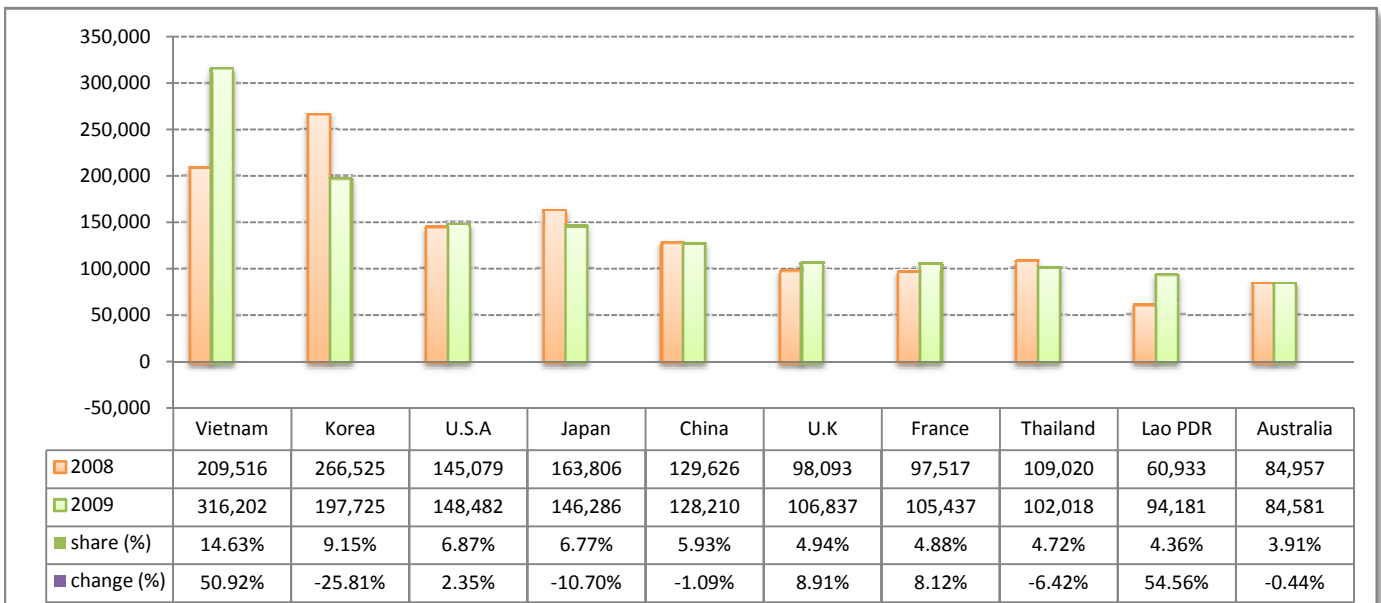
## Executive Summary Report from January - December in 2009

I. Visitor arrivals to Cambodia from January - December was: **2,161,577**

### II. Mode of arrivals

	visitors	share (%)
<b>- Air</b>	<b>1,111,729</b>	<b>51.43</b>
Phnom Penh Int'l Airport	527,745	24.41
Siem Reap Int'l Airport	583,984	27.02
<b>- Land and Water ways</b>	<b>934,006</b>	<b>43.21</b>
Land	855,697	39.59
Boat	78,309	3.62
- Day visitors	115,842	5.36
<b>Total</b>	<b>2,161,577</b>	<b>100.00</b>

### III. Top ten markets arrivals to Cambodia from January - December in 2009



### IV. Visitor arrivals to Cambodia from January - December in 2009

Visitor arrivals			share (%)		change (%)
	2008	2009	2008	2009*	2009*/08
<b>Air</b>	<b>1,239,407</b>	<b>1,111,729</b>	<b>58.31</b>	<b>51.43</b>	<b>-10.30</b>
Phnom Penh Int'l Airport	570,903	527,745	26.86	24.41	-7.56
Siem Reap Int'l Airport	668,504	583,984	31.45	27.02	-12.64
<b>Land and Water ways</b>	<b>762,027</b>	<b>934,006</b>	<b>35.85</b>	<b>43.21</b>	<b>22.57</b>
Land	690,138	855,697	32.47	39.59	23.99
Boat	71,889	78,309	3.38	3.62	8.93
<b>Sub-Total</b>	<b>2,001,434</b>	<b>2,045,735</b>	<b>94.16</b>	<b>94.64</b>	<b>2.21</b>
Day visitors	124,031	115,842	5.84	5.36	-6.60
<b>Total</b>	<b>2,125,465</b>	<b>2,161,577</b>	<b>100.00</b>	<b>100.00</b>	<b>1.70</b>

### V. Remark: Percentage share of visitor arrivals at destinations from January - December in 2009

Visitor arrivals			share (%)		change (%)
	2008	2009	2008	2009*	2009*/08
Phnom Penh & Other Destinations	1,065,595	1,163,493	50.13%	53.83%	9.19%
Siem Reap Province	1,059,870	998,084	49.87%	46.17%	-5.83%
<b>Total</b>	<b>2,125,465</b>	<b>2,161,577</b>	<b>100.00%</b>	<b>100.00%</b>	<b>1.70%</b>

### VI. Outbound tourist departures from January - December in 2009

	2008	2009	change (%)
Cambodian outbound tourist departure:	785,896	339,698	-56.78%
International outbound tourists departure:	1,868,194	1,951,827	4.48%

## Visitor Arrivals to Cambodia by Country of Residence from January - December in 2009

(by all means of transportation)

Regions Country of Residence	2008	2009			Total	Females	share (%) 2009*	change (%) 2009*/08
		Purpose of Visit						
		Tourists	Business	Others				
<b>GRAND TOTAL</b>	<b>2,125,465</b>	<b>1,991,900</b>	<b>132,780</b>	<b>36,897</b>	<b>2,161,577</b>	<b>905,098</b>	<b>100.00%</b>	<b>1.70%</b>
<b>Asia and the Pacific</b>	<b>1,327,670</b>	<b>1,240,780</b>	<b>106,905</b>	<b>19,854</b>	<b>1,367,539</b>	<b>591,299</b>	<b>63.27%</b>	<b>3.00%</b>
<b>ASEAN</b>	<b>552,461</b>	<b>640,326</b>	<b>42,193</b>	<b>10,300</b>	<b>692,819</b>	<b>307,925</b>	<b>32.05%</b>	<b>25.41%</b>
Brunei Darussalam	356	273	14	119	406	167	0.02%	14.04%
Indonesia	9,198	6,035	3,160	390	9,585	3,437	0.44%	4.21%
Lao PDR	60,933	93,292	126	763	94,181	61,748	4.36%	54.56%
Malaysia	80,738	72,157	5,311	291	77,759	25,644	3.60%	-3.69%
Myanmar	2,461	1,694	466	156	2,316	838	0.11%	-5.89%
Philippines	39,294	42,600	5,292	1,187	49,079	28,460	2.27%	24.90%
Singapore	40,945	39,413	1,652	208	41,273	14,723	1.91%	0.80%
Thailand	109,020	84,334	15,058	2,626	102,018	34,045	4.72%	-6.42%
Vietnam	209,516	300,528	11,114	4,560	316,202	138,863	14.63%	50.92%
<b>Eastern Asia</b>	<b>646,432</b>	<b>487,232</b>	<b>55,403</b>	<b>5,787</b>	<b>548,422</b>	<b>230,417</b>	<b>25.37%</b>	<b>-15.16%</b>
China	129,626	96,424	30,467	1,319	128,210	52,703	5.93%	-1.09%
Hong Kong, China	3,320	3,430	452	6	3,888	1,603	0.18%	17.11%
Japan	163,806	139,180	4,691	2,415	146,286	64,105	6.77%	-10.70%
Mongolia	155	153	16	25	194	83	0.01%	25.16%
South Korea	266,525	183,491	12,260	1,974	197,725	81,015	9.15%	-25.81%
Taiwan, China	83,000	64,554	7,517	48	72,119	30,908	3.34%	-13.11%
<b>Southern Asia</b>	<b>15,452</b>	<b>11,442</b>	<b>3,389</b>	<b>1,144</b>	<b>15,975</b>	<b>4,228</b>	<b>0.74%</b>	<b>3.38%</b>
Afghanistan	40	95	3	28	126	57	0.01%	215.00%
Bangladesh	708	568	231	126	925	137	0.04%	30.65%
India	12,467	9,303	2,544	614	12,461	3,485	0.58%	-0.05%
Nepal	929	585	195	128	908	253	0.04%	-2.26%
Pakistan	577	460	179	159	798	129	0.04%	38.30%
Srilanka	731	431	237	89	757	167	0.04%	3.56%
<b>Oceania</b>	<b>99,087</b>	<b>90,812</b>	<b>5,580</b>	<b>2,286</b>	<b>98,678</b>	<b>42,032</b>	<b>4.57%</b>	<b>-0.41%</b>
Australia	84,957	77,877	4,723	1,981	84,581	36,305	3.91%	-0.44%
New Zealand	14,130	12,935	857	305	14,097	5,727	0.65%	-0.23%
Others Asia & the Pacific	14,238	10,968	340	337	11,645	6,697	0.54%	-18.21%
<b>Europe</b>	<b>457,471</b>	<b>438,087</b>	<b>16,364</b>	<b>10,291</b>	<b>464,742</b>	<b>178,006</b>	<b>21.50%</b>	<b>1.59%</b>
<b>Northern Europe</b>	<b>153,376</b>	<b>145,074</b>	<b>5,560</b>	<b>2,677</b>	<b>153,311</b>	<b>53,691</b>	<b>7.09%</b>	<b>-0.04%</b>
Denmark	9,371	8,500	259	178	8,937	3,579	0.41%	-4.63%
Finland	6,833	6,193	171	195	6,559	2,257	0.30%	-4.01%
Iceland	274	180	3	0	183	59	0.01%	-33.21%
Ireland	11,255	8,579	274	184	9,037	3,622	0.42%	-19.71%
Norway	7,875	6,679	199	139	7,017	2,760	0.32%	-10.90%
Sweden	19,675	14,023	436	282	14,741	5,771	0.68%	-25.08%
United Kingdom	98,093	100,920	4,218	1,699	106,837	35,643	4.94%	8.91%
<b>Western Europe</b>	<b>215,227</b>	<b>211,080</b>	<b>8,899</b>	<b>6,078</b>	<b>226,057</b>	<b>86,464</b>	<b>10.46%</b>	<b>5.03%</b>
Austria	7,276	8,526	108	47	8,681	3,620	0.40%	19.31%
Belgium	13,179	12,032	497	451	12,980	4,933	0.60%	-1.51%
France	97,517	96,169	5,672	3,596	105,437	40,642	4.88%	8.12%
Germany	59,903	57,387	1,319	1,210	59,916	22,478	2.77%	0.02%
Luxembourg	486	419	13	40	472	167	0.02%	-2.88%
Netherlands	22,408	20,835	736	487	22,058	8,904	1.02%	-1.56%
Switzerland	14,458	15,712	554	247	16,513	5,720	0.76%	14.21%
<b>Eastern Europe</b>	<b>30,219</b>	<b>33,220</b>	<b>817</b>	<b>420</b>	<b>34,457</b>	<b>16,216</b>	<b>1.59%</b>	<b>14.02%</b>
Bulgaria	322	365	4	15	384	193	0.02%	19.25%
Czech	2,147	2,555	48	46	2,649	1,118	0.12%	23.38%
Hungary	2,193	2,056	82	46	2,184	939	0.10%	-0.41%
Poland	5,630	6,246	24	49	6,319	3,076	0.29%	12.24%
Romania	569	742	23	9	774	450	0.04%	36.03%
Russia	16,927	18,656	538	201	19,395	9,233	0.90%	14.58%
Slovakia	762	840	12	43	895	374	0.04%	17.45%
Ukraine	1,669	1,760	86	11	1,857	833	0.09%	11.26%
<b>Southern Europe</b>	<b>44,795</b>	<b>38,471</b>	<b>836</b>	<b>838</b>	<b>40,145</b>	<b>16,561</b>	<b>1.86%</b>	<b>-10.38%</b>
Croatia	355	279	8	26	313	137	0.01%	-11.83%
Greece	1,441	1,363	21	22	1,406	516	0.07%	-2.43%
Italy	19,516	16,353	404	397	17,154	6,351	0.79%	-12.10%
Portugal	2,284	2,412	40	29	2,481	1,157	0.11%	8.63%
Slovenia	891	707	15	18	740	312	0.03%	-16.95%
Spain	18,344	15,834	207	270	16,311	7,585	0.75%	-11.08%
Turkey	1,964	1,523	141	76	1,740	503	0.08%	-11.41%
Others Europe	13,854	10,242	252	278	10,772	5,074	0.50%	-22.25%

## Visitor Arrivals to Cambodia by Country of Residence from January - December in 2009

(by all means of transportation)

Regions Country of Residence	2008	2009			Total	Females	share	change
		Purpose of Visit					(%)	(%)
		Tourists	Business	Others			2009*	2009*/08
<b>GRAND TOTAL</b>	<b>2,125,465</b>	<b>1,991,900</b>	<b>132,780</b>	<b>36,897</b>	<b>2,161,577</b>	<b>905,098</b>	<b>100.00%</b>	<b>1.70%</b>
<b>Americas</b>	<b>204,878</b>	<b>185,856</b>	<b>8,844</b>	<b>6,430</b>	<b>201,130</b>	<b>82,458</b>	<b>9.30%</b>	<b>-1.83%</b>
Argentina	1,645	1,658	25	34	1,717	751	0.08%	4.38%
Brazil	2,058	2,117	16	71	2,204	1,091	0.10%	7.09%
Canada	36,891	33,887	1,669	784	36,340	15,922	1.68%	-1.49%
Chile	1,639	1,853	66	24	1,943	926	0.09%	18.55%
Colombia	785	863	23	56	942	471	0.04%	20.00%
Mexico	3,379	2,680	15	27	2,722	1,369	0.13%	-19.44%
Peru	388	389	16	17	422	191	0.02%	8.76%
United States	145,079	136,391	6,853	5,238	148,482	58,603	6.87%	2.35%
Uruguay	167	310	0	3	313	153	0.01%	87.43%
Others Americas	12,847	5,708	161	176	6,045	2,981	0.28%	-52.95%
<b>Africa</b>	<b>4,040</b>	<b>4,746</b>	<b>478</b>	<b>179</b>	<b>5,403</b>	<b>1,416</b>	<b>0.25%</b>	<b>33.74%</b>
Cameroon	340	989	43	19	1,051	111	0.05%	209.12%
Ghana	132	589	20	15	624	38	0.03%	372.73%
Nigeria	999	805	255	40	1,100	78	0.05%	10.11%
Sudan	38	22	3	7	32	6	0.00%	-15.79%
South Africa	2,180	1,932	124	48	2,104	952	0.10%	-3.49%
Others Africa	351	409	33	50	492	231	0.02%	40.17%
<b>Middle East</b>	<b>7,375</b>	<b>6,589</b>	<b>189</b>	<b>143</b>	<b>6,921</b>	<b>2,258</b>	<b>0.32%</b>	<b>-6.16%</b>
Egypt	155	145	15	13	173	39	0.01%	11.61%
Iran	297	312	17	9	338	51	0.02%	13.80%
Israel	6,131	5,227	137	75	5,439	2,020	0.25%	-11.29%
Kuwait	472	629	1	3	633	13	0.03%	34.11%
Palestine	0	0	0	0	0	0	0.00%	
Saudi Arabia	52	38	2	8	48	6	0.00%	-7.69%
United Arab Emirates	0	0	0	0	0	0	0.00%	
Others Middle East	268	238	17	35	290	129	0.01%	8.21%
Day visitors	124,031	115,842	0	0	115,842	49,661	5.36%	-6.60%

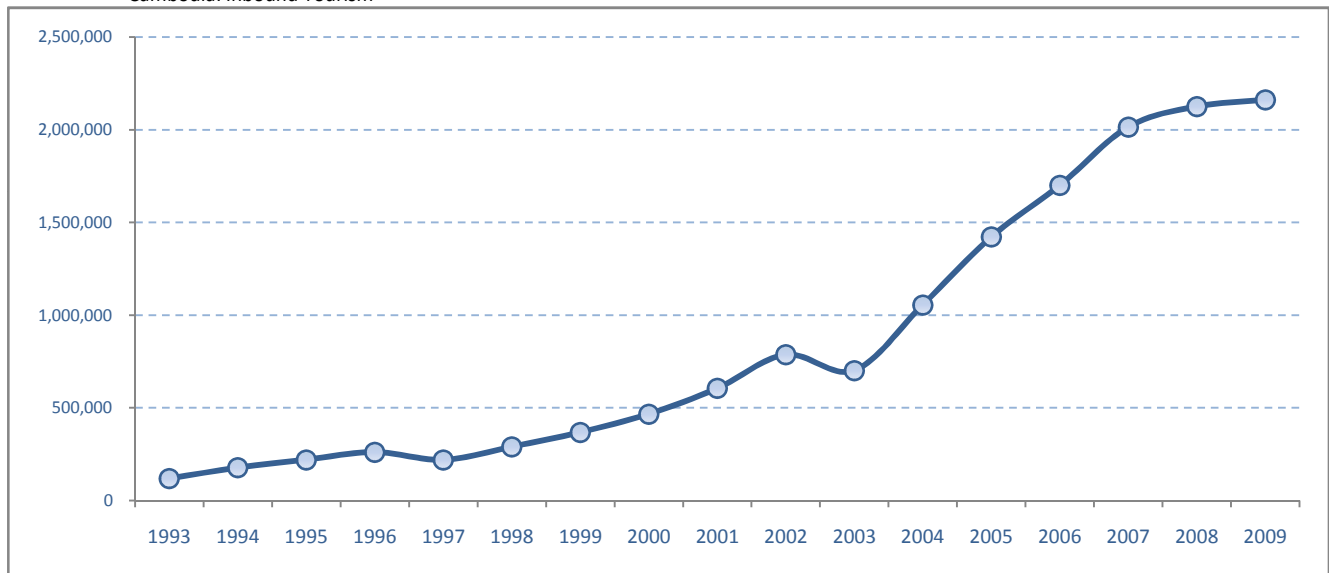
### Remark:

- Cambodian Overseas:	79,976
- Cambodian Residence:	314,687
- Cambodian outbound tourist departures:	339,698
- International outbound tourist departures:	1,951,827

## Major data in 1993 - 2009

Years	Visitor Arrivals		Average Length of Stay	Hotel Occupancy Rate	Tourism Receipts
	number	change (%)	(days)	(%)	million (US\$)
1993	118,183	0.00	N/A	N/A	N/A
1994	176,617	49.44%	N/A	N/A	N/A
1995	219,680	24.38%	8.00	37.00	100
1996	260,489	18.58%	7.50	40.00	118
1997	218,843	-15.99%	6.40	30.00	103
1998	289,524	32.30%	5.20	40.00	166
1999	367,743	27.02%	5.50	44.00	190
2000	466,365	26.82%	5.50	45.00	228
2001	604,919	29.71%	5.50	48.00	304
2002	786,524	30.02%	5.80	50.00	379
2003	701,014	-10.87%	5.50	50.00	347
2004	1,055,202	50.53%	6.30	52.00	578
2005	1,421,615	34.72%	6.30	52.00	832
2006	1,700,041	19.59%	6.50	54.79	1,049
2007	2,015,128	18.53%	6.50	54.79	1,403
2008	2,125,465	5.48%	6.65	62.68	1,595
2009	2,161,577	1.70%	6.45	63.57	1,561

Cambodia: Inbound Tourism



### Average length of stay

Kind of tourist	Phnom Penh	Siem Reap	Expenditure (US\$/day)
	(days)	(days)	
Group tour	3.50	3.00	
Individual	5.12	4.79	
Total	3.58	3.16	117.25

### Average expenditure of individual

Items	Expenditure (US\$)
Accommodation	148.28
Food & beverage	75.88
Souvenire	75.59
Local transport	71.90
Others	57.03
Average	425.67

### Average expenditure of group tours

Items	Expenditure (US\$)
Package Tours	908.65
Shopping	160.64
Others	66.64
Total	1,135.93

**COMPILED BY:**

1. Mr. Kong Sopheareak

Director  
Statistics & Tourism Information Department  
Tel.: +855 23 885003  
E-mail: kong@mot.gov.kh

2. Mr. Horth Vanny

Chief of Tourism Statistics Office  
Compile and data analysis  
Tel.: +855 12 827664