



MINISTRY OF TOURISM

KINGDOM OF CAMBODIA
NATION RELIGION KING

TOURISM STATISTICS

ANNUAL
REPORT

2009



**ANNUAL REPORT
ON
TOURISM STATISTICS 2009**

**STATISTICS & TOURISM INFORMATION DEPARTMENT
MINISTRY OF TOURISM**

KINGDOM OF CAMBODIA

MINISTRY OF TOURISM

Statistics and Tourism Information Department

No. 3A, Street 169, Sangkat Veal Vong, Khan 7 Makara, Phnom Penh, Cambodia.

Tel.: +855 23 884972 / Fax: +855 23 884974

Email: admin@mot.gov.kh

Website: www.mot.gov.kh

MESSAGE


Dr. THONG Khon
Minister of Tourism

The Department of Statistics and Tourism Information of the Ministry of Tourism (MOT) annually compiles and publishes collected data on tourism statistics report. It consists of significant data on the status of international visitor arrivals and their average length of stay, domestic tourists, and tourism services.

The Kingdom of Cambodia riches in a wide variety of cultural and natural resources, therefore Cambodia tourism pillar is under "Cultural and Natural Tourism". Tourism has been regarded as a Green Economic which is one of the key areas to support a sustainable economic growth. Tourism plays a significant role in terms of job creation, accelerates economic growth, earns foreign revenue, preserves cultural heritage and environment, encourages a responsible tourism and is a potential driving force in poverty alleviation.

The impact of global economic downturn in 2009 has caused number of tourist travelling in the region drop down, however international visitors flow to Cambodia remain at its positive stage which increased by 2% (2.16 million). Significantly, the number of domestic tourist growth by 4% (7.02 million) and this growth has great contribution to stimulate Cambodia macro economic during the downturn. The positive growth of international and domestic tourists due to the introduction of additional policies and strategies particularly promotion campaign "Cambodia - Kingdom of Wonder" and "Clean City, Clean Resort, Good Service" have great potential and play a pivotal role to provide a standard quality tourism services for all visitors.

I believe this 2009 Statistics Report will be a vital means for those who are conducting research on the tourism industry of Cambodia. Plus this statistic will act as fundamental indicator to broaden and strengthen tourism strategy in order to attract and retain a sustainable tourism growth to Cambodia - Kingdom of Wonder.

Best wishes, 

Dr. THONG Khon
Minister of Tourism



Disclaimer

All rights are reserved. No part of this publication may be reproduced in any form or by any electronic or mechanical means, including information storage and retrieval systems, without permission in writing from authorised personnel from the Department of Statistics and Tourism Information of the Ministry of Tourism.

This publication is intended to provide accurate information and includes material from sources considered to be reliable. It is provided with the understanding that the Department of Statistics and Tourism Information of the Ministry of Tourism, legally established by the Royal Government of Cambodia, has collected a data of international visitor arrivals at various international border checkpoints in Cambodia, disclaims any warranty concerning information provided, assume no liability for advertising claims and reserve the right to accept or reject any advertising. The publisher welcomes suggestions for corrections or changes. Statements and opinions expressed in this publication do not necessarily represent those of the publisher or Department of Statistics and Tourism Information of the Ministry of Tourism, which assumes no responsibility for editorial content.

It should also be recognised that with this Annual Statistical Report in particular, while the data used were accurate at the time of compilation and printing, some changes due to revisions and/or changing collection and weighting techniques may have occurred since then.

Please contact the Department of Statistics and Tourism Information of the Ministry of Tourism (info@mot.gov.kh) for the most recent updates.



General Information



Official Name	Kingdom of Cambodia
Area	181,035 km ²
National Independence Day	09 November, 1953
Population	13,395,682 (2008)
Annual Population Growth Rate	1.54%
Outbound Tourists	339,698 (2009)
Density	77
Language	Khmer
Religion	Buddhist 97%
Capital	Phnom Penh
Provinces	23
Cities	26
Khans	8
Districts	159
Communes	1,417
Sangkats	204
Country Code	+855
Time	GMT +7 hours

Khmer History

The Mon-Khmer race developed slowly during the first six centuries of the Christian era. Under Indian influence, a powerful maritime empire called “Funan” ruled over all the shores of the Gulf of Siam. Within a short time, this new power known as Chenla absorbed the Funanese Kingdom. In the late 7th century, Chenla broke into two parts: land Chenla (to the north) and water Chenla (to the south along the Gulf of Thailand). Land Chenla was fairly stable during the 8th century, whereas water Chenla was beset by dynastic rivalries.

At the beginning of the 9th century, the kings set up their capital in the present province of Siem Reap. For nearly six centuries, they erected two hundred temples as well as their sanctuaries in the Angkorian area of some 400 square kilometers in the Siem Reap Province.

King Suryavarman II (1113-1150) built the temples such as Angkor Wat, Thommanon, Chau Say Tevoda, Preah Palilay, Preah Pithu, and Banteay Samrè.

Jayavarman VII (1181-1220) was best known for his huge building program. Firstly, he built Ta Prohm (1186) and Preah Khan (1191) to dedicate to his parents. Secondly, he erected Banteay Kdei, Srah Srang, the Terrace of the Leper King, the Terrace of the Elephants, Neak Pean, Ta Som, Ta Nei, and some others in other parts of the country. Thirdly, he founded his great capital, Angkor Thom. Finally, in the center, he built the Bayon with its two hundred stone faces.

The decline of the Angkor era began after the death of King Jayavarman VII in the early 13th century. Due to the Siamese invasion and the limitation of the irrigation system, Khmer power declined so much that the king was finally obliged to move to the vicinity of Phnom Penh in 1431. Resulting from a series of Siamese and Cham invasions, the country was put as a French protectorate in 1863.

After regaining Independence in 1953, the country has had several names:

1. The Kingdom of Cambodia (under the Reachia Niyum Regime from 1953 to 1970);
2. The Khmer Republic (under the Lon Nol Regime from 1970 to 1975);
3. Democratic Kampuchea (under the Pol Pot Genocidal Regime from 1975 to 1979);
4. The People’s Republic of Kampuchea (1979-1989);
5. The State of Cambodia (1989-1993);
6. The Kingdom of Cambodia (1993 until now).

Definitions

1. Visitor: Any person going to or leaving a city or province, which is not his/her usual place of resident, for any reason, and with or without staying overnight in that city or province.
2. Tourist: Any person visiting Cambodia for any reason other than to exercise remunerated activity within the country. The person must stay at least one night, but not longer than 30 days and the purpose of his/her journey can be classified under one of the following: leisure (recreation, holiday, health, study, religion and sport), business, family, mission, and meeting. This also refers to all arrivals by sea with overnight stay accommodation establishments ashore and excludes cruise passengers who stay overnight on board and direct transit passengers who do not pass through immigration.
3. Same-day Visitors (Excursionist): Visitor who does not stay overnight in the country.
4. Outgoing Cambodian Travelers: Any Cambodian nationals or residents of Cambodia whose place of residence is in Cambodia, leaving the Kingdom temporarily to visit any foreign country, for any reason. Cambodian nationals living abroad are excluded.
 - 4.1 Residents of Cambodia refer to Cambodian nationals and foreigners who have residence in Cambodia.
 - 4.2 Overseas Cambodian refer to all Cambodian nationals residing in foreign countries.
5. Domestic Tourism: The movement of residents from one province to another with objectives that are not related to their work or study. They must not be permanent resident, or regular workers or students in the province
6. Inbound Tourism, involving non-resident traveling in the given country.
7. Internal Tourism, which comprises domestic tourism and inbound tourism.

CONTENTS

Minister Message	
Disclaimer	
General Information	
Definitions	
Tourism Highlight 1993 – 2009	
Executive Summary Report in 2009	
Map of International Border Check-Point	

Unit I – Inbound and Outbound Tourists

Visitor arrivals to Cambodia by months from 2000 – 2009	1
Visitor arrivals to Cambodia by regions in 2009	2
<i>(by all mean of transports)</i>	
Visitor arrivals to Cambodia by country of residences in 2009	3 – 4
<i>(by all mean of transports)</i>	
Visitor arrivals to Cambodia by purpose of visit in 2008 – 2009	5 – 6
<i>(by all mean of transports)</i>	
Visitor arrivals to Cambodia by purpose of visit by air in 2008 – 2009	7 – 8
<i>(by air only)</i>	
Visitor arrivals to Cambodia by mode of arrivals in 2008 – 2009	9
Visitor arrivals to Cambodia by mode of arrivals in 2004 – 2009 <i>(by all mean of transports)</i>	9
Top ten generating markets in 2004 – 2009	10
Visitor arrivals to Cambodia by international border check-points in 2008 – 2009	11 – 12
Cambodian outbound tourist departures in 2008 – 2009	13
International outbound tourist departures in 2008 – 2009	14
International outbound tourist departures by country of residence in 2009	15 – 16
Major Data in 1993 – 2009	17
Profile of international visitor arrivals to Cambodia in 2007 – 2009 (visitors survey 2009)	18

Section I: Phnom Penh International Airport

Tourist arrivals to Phnom Penh International Airport by months in 2001 – 2009	19
Tourist arrivals to Phnom Penh International Airport by regions in 2009	20
Tourist arrivals to Phnom Penh International Airport by country of residences in 2009	21 – 22
Top ten generating markets in 2008 – 2009, tourist arrivals by ranks	22
Tourist arrivals to Phnom Penh International Airport by purpose of visit in 2001 – 2009	23
Tourist outbound departure from Phnom Penh International Airport by months in 2001 – 2009	24

Section II: Siem Reap International Airport

Tourist arrivals to Siem Reap International Airport by country of residences in 2009	25 – 26
Top ten generating markets in 2008 – 2009, tourist arrivals by ranks	26
Tourist arrivals to Siem Reap International Airport by regions in 2009	27
Tourist arrivals to Siem Reap by mode of transports in 2008 – 2009	28
Tourist arrivals to Siem Reap International Airport in 2008 – 2009	29
Tourist arrivals to Siem Reap province by months in 2002 – 2009	30
Tourist arrivals to Siem Reap International Airport by purpose of visit in 2002 – 2009	30

Section III: International Border Check-points

Visitor arrivals to Cambodia by land and boat in 2001 – 2009	31
Visitor arrivals to Cambodia int'l border check-points by regions in 2009	32
Visitor arrivals to int'l border check-points by purpose of visit in 2002 – 2009	32
Visitor arrivals to Cambodia int'l border check-points by country of residences in 2009	33 – 34
Top ten generating markets in 2008 – 2009, tourist arrivals by ranks	34

Unit II – Domestic Tourist

Cambodian visitor arrivals to provinces in 2008 – 2009	35
International visitor arrivals to other destinations in 2008 – 2009	35
Cambodian visitors to Siem Reap provinces by mode of transports in 2008 – 2009	36
International visitor arrivals to Siem Reap provinces by mode of transports in 2008 – 2009	36

Unit III – Tourism Services Statistics

Section I: Accommodations

Number of hotels & guesthouses from 1997 – 2009	37
Distribution of hotels and guesthouses in 2009	37

Section II: Travel Agencies & Tour Operators

Number of travel agencies & tour operators from 1996 – 2009	38
Number of travel agencies and tour operators from 2003 – 2009	38

Section III: Tour Guides

Training tour guides..... 38
Licensed tour guides 38

Section IV: Transportations

Airports..... 39
National road network (NR)..... 39
Railways..... 39
Border crossing 39
Airlines..... 40

Compiled by: Statistics and Tourism Information Department, Ministry of Tourism.

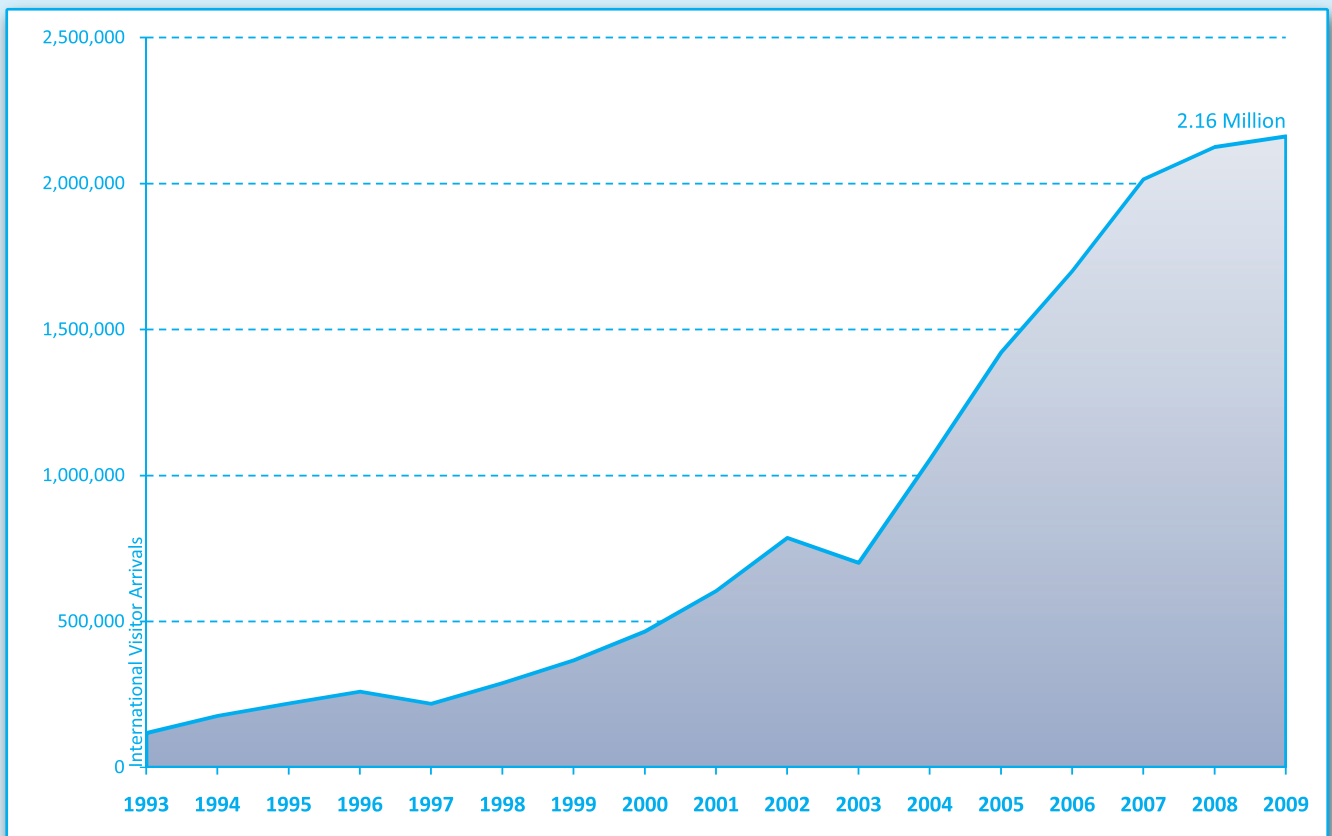
Sources: Immigration Department, Ministry of Interior; and
Provinces Tourism Department;



Tourism Highlights

Visitor Arrivals, Average Length of Stay, Hotels Occupancy and Tourism Receipts in 1993 - 2009

Years	Visitor Arrivals		Average Length	Hotels Occupancy	Tourism Receipts
	Number	Change (%)	of Stay (Days)	(%)	(Million US\$)
1993	118,183	-	N/A	N/A	N/A
1994	176,617	49.44%	N/A	N/A	N/A
1995	219,680	24.38%	8.00	37.00	100
1996	260,489	18.58%	7.50	40.00	118
1997	218,843	-15.99%	6.40	30.00	103
1998	289,524	32.30%	5.20	40.00	166
1999	367,743	27.02%	5.50	44.00	190
2000	466,365	26.82%	5.50	45.00	228
2001	604,919	29.71%	5.50	48.00	304
2002	786,524	30.02%	5.80	50.00	379
2003	701,014	-10.87%	5.50	50.00	347
2004	1,055,202	50.53%	6.30	52.00	578
2005	1,421,615	34.72%	6.30	52.00	832
2006	1,700,041	19.59%	6.50	54.79	1,049
2007	2,015,128	18.53%	6.50	54.79	1,400
2008	2,125,465	5.48%	6.65	62.68	1,595
2009	2,161,577	1.70%	6.45	63.57	1,561



Executive Summary of 2009 Report

2009 was a harsh year for the tourism industry in Southeast Asia. The global economic crisis created huge fluctuations in the prices of international commodities, such as oil, and volatility in the exchange rate. The worldwide economic downturn, when coupled with other factors such as regional political crisis, natural disasters, and the threat of pandemic disease (swine flu), created a perfect storm that washed away many of the gains made in the Asia-Pacific tourism sector in recent years. Tourism in the region saw a 2% drop in 2009. Cambodia's tourism industry suffered many of the impacts felt throughout the region, but showed remarkable resilience in key areas, such as overland travel and ecotourism that may prove critical to the future health of the country's tourism sector.

Although the world has faced many economic challenges over the past year, Cambodia's tourism has continued to grow, registering 2,161,577 international visitor arrivals in 2009, 1.70% increase compared over 2008. December was the peak month for tourist visits with 234,962 arrivals documented, or 10.87% of total arrivals. January came in a close second with 218,691, or 10.12% of total arrivals; March showed 202,808 arrivals, or 9.38% of total arrivals; and February 200,789 arrivals, or 9.29% of total arrivals, followed by November with 195,570 arrivals, or 9.05% of total arrivals.

In the first quarter of 2009, the visitor arrivals to Cambodia showed a -1.07 % decrease. One could not have been faulted at the time for predicting a dismal year ahead for the sector. In a remarkable turnaround, however, the second quarter of 2009 showed a +4.66% increase when compared to the same period in 2008. Moreover, the international visitor arrivals from all regions showed a growing diversity in the profile of the "average" tourists to Cambodia. Visitor numbers from the Asia and Pacific regions were up +3.00%, while visitors from the ASEAN countries showed a notable increase of +25.41%. The numbers for Europeans showed a slight raise of +1.59%, while visitors from African were up an astounding +33.74%. Only the tourist numbers from the Americas and the Middle East showed slight declines of -1.83% and -6.16%, respectively. Perhaps as a result of Cambodia's increasingly diverse visitor profile, the tourism receipts stood at USD 1,561 million for 2009—indicating a decline of -2.13% when compared to the last year, and less of a decline than was expected in the face of crippling international economic trends.

By air

The majority of international visitors arrived by air, accounting for 1,111,729, or 51.43% of all visitors. 27.02% of air arrivals were registered at the Siem Reap International Airport, while 24.41% were registered at the Phnom Penh International Airport. One of the most noticeable statistical declines was in the number of tourists who traveled by air—Cambodia showed a -10.30% decline from the year before. Air travelers still remained a diverse bunch when hailing from the Southeast Asian region, however, with 25.25% arriving from Thailand, 39.06% from Vietnam, 7.63% from Singapore, 8.93% from Malaysia, 11.86% from Korea, and 2.92% from Laos, and 4.83% from other countries within the region.

By land

In 2009, overland travelers to Cambodia accounted for 39.59%, a sharp increase over the 23.99% registered in 2009. In particular, the share of waterway arrivals was 3.62% (an increase of 8.93%), but the share of day visitors was 5.36% (a decline of -6.60%). It could be speculated that this significant increase in overland arrivals helped counter the slowed growth in the number of tourists who traveled to Cambodia via air.

Purpose of Visit:

Tourists comprised the lion's share of international arrivals (for leisure and holiday), which accounted for 84.34% of total visitors to Cambodia, while 6.65% of international arrivals were business travelers, 2.45% official travel, 4.78% came to visit friends and relatives, and 1.78% of visitors came for other reasons.

Visitor Profile:

2009 showed a bit of a gender divide in international traveler numbers to Cambodia, with men accounting for 61.42% of all international visitor arrivals. 66.5% of visitors were here on their first visit. Notably, 33.5% travelers registered as return visitors—indicating an increase in repeat tourists when compared to 2007 – 2008. Among international arrivals to Cambodia, the following occupational categories were represented: 13.13% of visitors were retired persons, 12.07% teachers, 6.88% volunteer, 11.71% government officials, 15.33% business persons, 10.93% employees, 13.40% students, 12.71% housewife, and 3.84% others.

Travel/trip profile:

The data of hotel performance in 2009 indicated that the overall occupancy grew by 63.57% and the average length of stay of international tourists climbed to 6.45 days. The average expenditure of tourists was high at USD 117.25 per day. 49.87% of visitors who visited Siem Reap Angkor made visit to other destinations in Cambodia. Among the international tourists visiting Cambodia, 48.96% were free independent travelers (FIT) and 51.04% were group inclusive travelers (GIT).

Source of Market:

The main markets for Cambodia in 2009 were: Vietnam 14.63%, Republic of Korea 9.15%, United States of America 6.87%, Japan 6.77%, China 5.93%, The United Kingdom 4.94%, France 4.88%, Thailand 4.72%, Laos 4.36%, and Australia 3.91%.

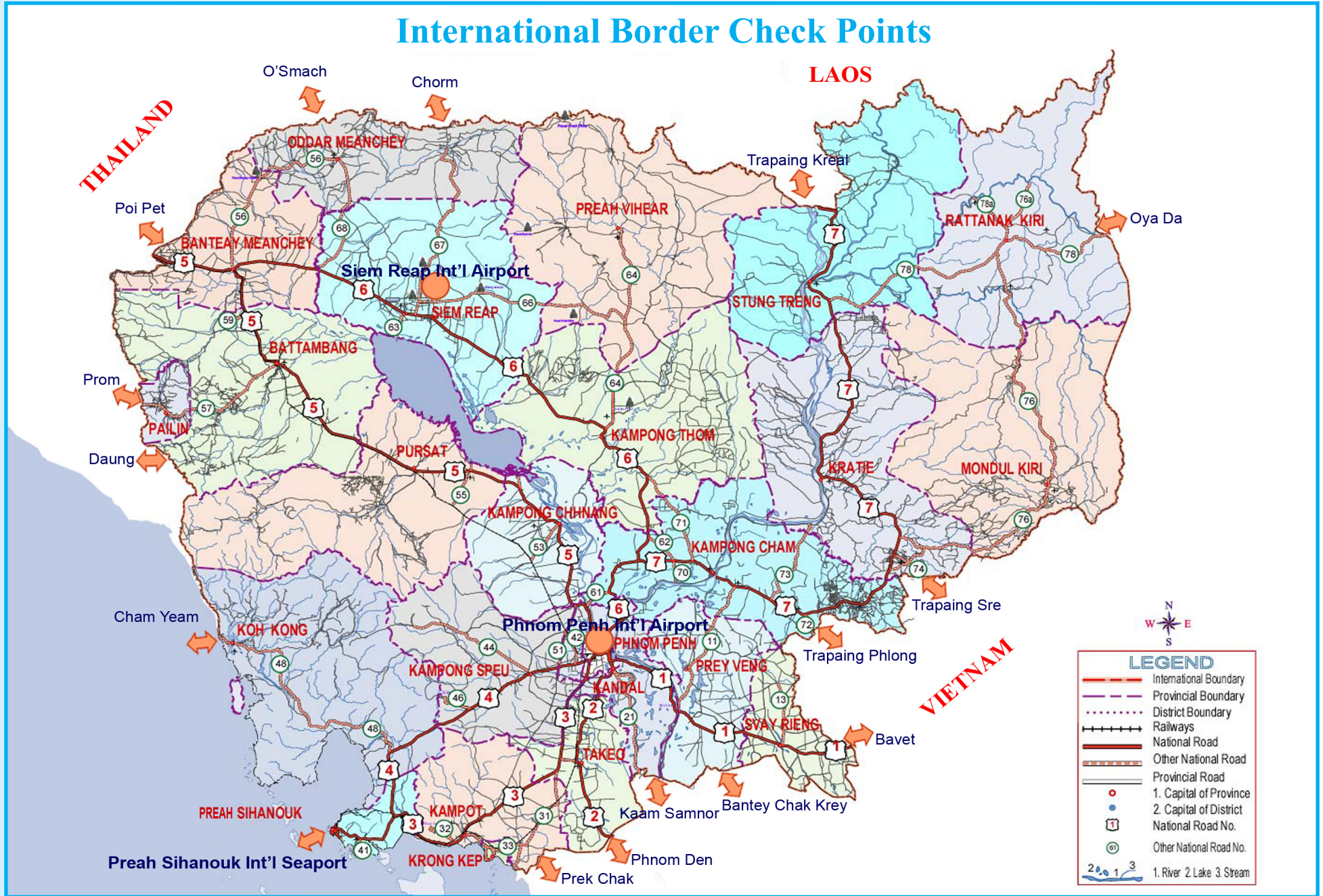
Domestic Market:

All tourist sites throughout Cambodia received a combined total of 7,021,509 domestic tourists in 2009, showing an overall increase of 4.3%. Siem Reap province received 1,279,356 visitors with an increase of 7.0%; whereas Phnom Penh received 1,973,370 visitors, an increase of 10.5%. Cambodia's coastal areas (which range from the provinces of Kampong Som, Kampot, Kep, and Koh Kong) decreased by -5.5% compared to 2008, Kampong Som showed a slight decrease of -0.4%, while Kampot showed a sharp decline of -29.8%. Travel to Kep, however, increased by 12.7% and visitors to Koh Kong rose remarkably to 42%—a robust increase that may in part be attributed to new efforts and campaigns of government to attract ecotourism to the Koh Kong province.

In addition; visitors to other ecotourism destinations in Cambodia—the Northeast provinces of Kratie, Stung Treng, Rattanakiri, and Mondulakiri—increased as a whole by 12.7%. It is worth noting that far from showing declining numbers in 2009, tourist visits to Cambodia's ecotourism destinations rose sharply, even in a depressed tourism economy. If a few conclusions might be garnered by these statistics, it is that Cambodia's tourism can continue to grow in the face of the worldwide economic crisis by increasingly focusing on ecotourism and making every effort to attract tourists from the Southeast Asian region, such as Vietnam and Thailand, to counter losses from the sinking American and European economies.



International Border Check Points



LEGEND

- International Boundary
- Provincial Boundary
- District Boundary
- + Railways
- National Road
- Other National Road
- Provincial Road
- o 1. Capital of Province
- o 2. Capital of District
- 11 National Road No.
- 61 Other National Road No.
- ~ 1. River 2. Lake 3. Stream

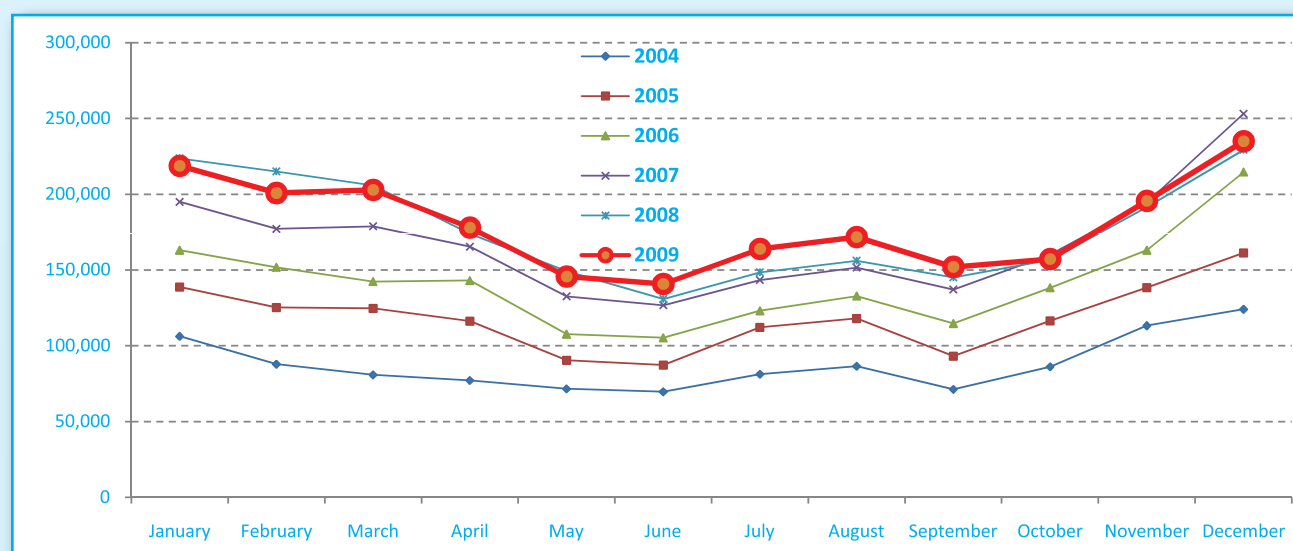
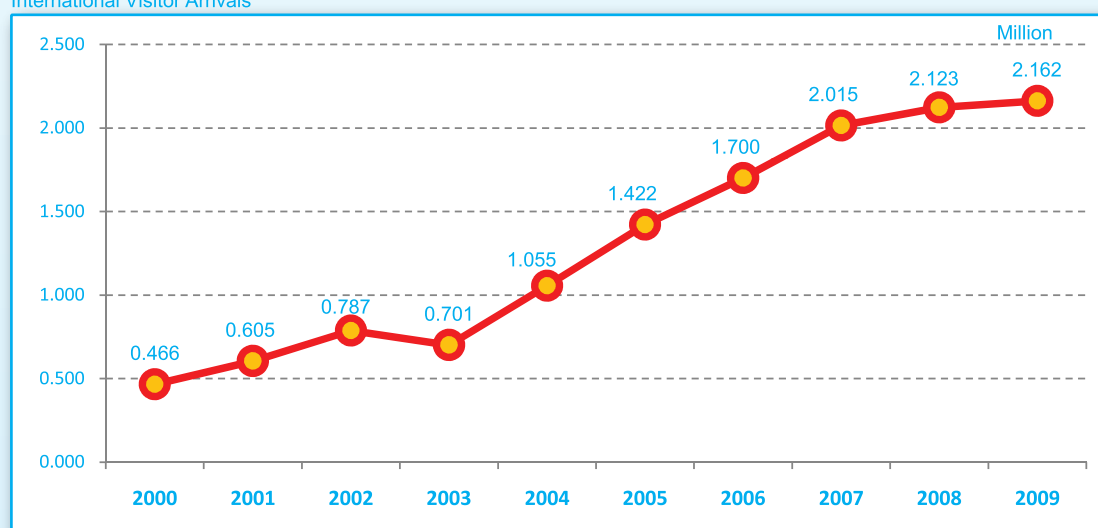
UNIT I

**INBOUND & OUTBOUND
TOURIST**



International visitor arrivals to Cambodia by months in 2000 - 2009

Destinations	Months	2000	2001	2002	2003	2004	2005	2006	2007	2008	2009	change(%) 2009*/08
Cambodia	Q1	119,776	167,849	210,714	208,832	274,760	388,670	457,305	550,813	644,205	622,288	-3.40%
Visitor arrivals	January	36,999	52,787	58,470	76,255	106,200	138,718	163,047	194,932	223,581	218,691	-2.19%
by all means of	February	42,236	51,728	74,756	72,162	87,795	125,326	151,821	177,130	214,902	200,789	-6.57%
transportation,	March	40,541	63,334	77,488	60,415	80,765	124,626	142,437	178,751	205,722	202,808	-1.42%
include	Q2	103,438	129,734	164,636	103,116	218,186	293,761	356,087	424,536	454,031	464,230	2.25%
same-day	April	40,150	47,014	65,733	37,154	77,105	116,219	143,069	165,347	173,903	177,955	2.33%
visitors	May	32,752	42,845	49,564	30,485	71,486	90,314	107,720	132,512	149,275	145,564	-2.49%
	June	30,536	39,875	49,339	35,477	69,595	87,228	105,298	126,677	130,853	140,711	7.53%
	Q3	111,111	139,419	173,820	158,418	238,882	323,217	370,620	431,815	449,693	487,422	8.39%
	July	39,441	49,035	58,286	47,555	81,223	112,116	123,047	143,310	148,449	163,817	10.35%
	August	40,237	49,798	65,455	58,263	86,450	117,943	132,792	151,478	156,098	171,668	9.97%
	September	31,433	40,586	50,079	52,600	71,209	93,158	114,781	137,027	145,146	151,937	4.68%
	Q4	132,040	167,917	237,354	230,648	323,374	415,967	516,029	607,964	577,536	587,637	1.75%
	October	47,236	44,237	58,370	54,020	86,121	116,382	138,296	160,235	156,718	157,105	0.25%
	November	47,236	53,350	81,527	78,387	113,195	138,293	163,068	194,646	191,549	195,570	2.10%
	December	48,753	70,330	97,457	98,241	124,058	161,292	214,665	253,083	229,269	234,962	2.48%
Total		466,365	604,919	786,524	701,014	1,055,202	1,421,615	1,700,041	2,015,128	2,125,465	2,161,577	1.70%

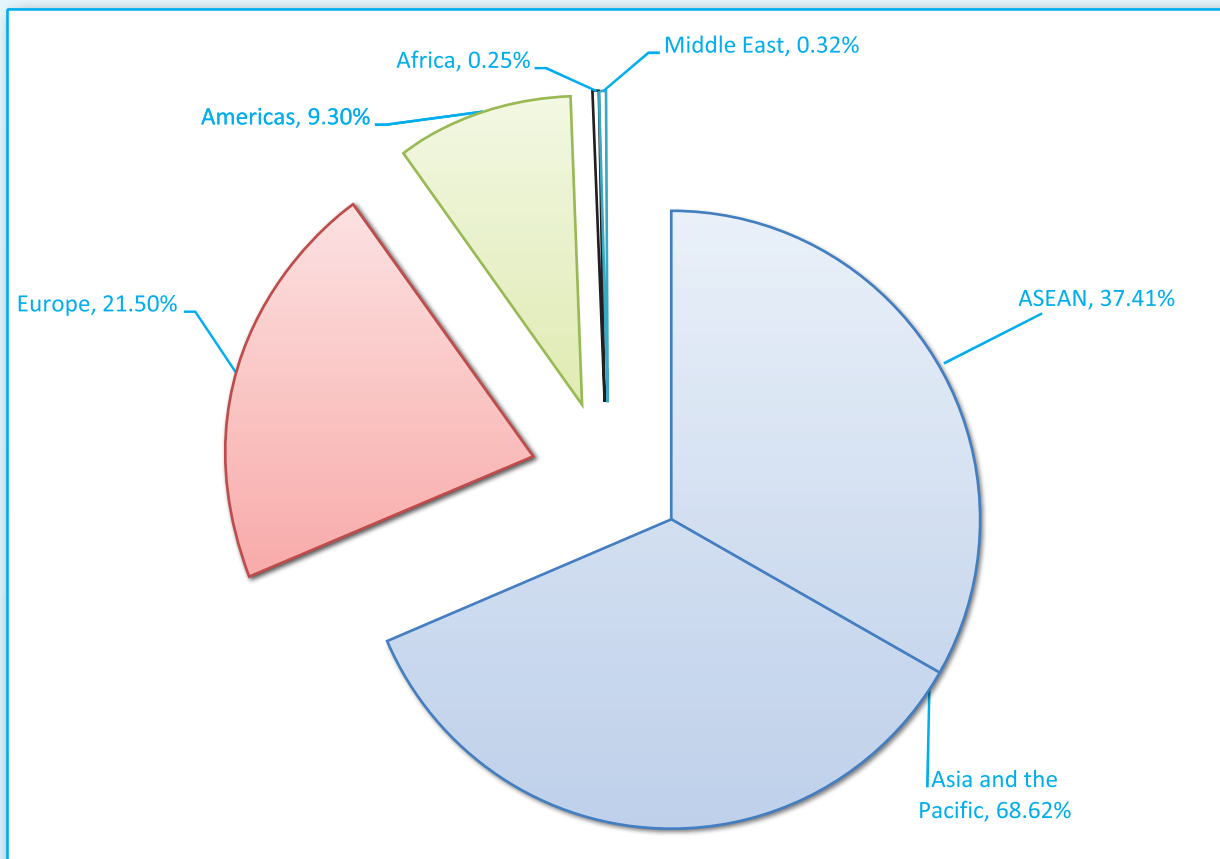
Cambodia: Inbound Tourism
International Visitor Arrivals



Visitor arrivals to Cambodia by regions in 2009

(by all means of transportation)

Months	Asia and the Pacific	ASEAN	Europe	Americas	Africa	Middle East	Total
Q1	400,516	200,062	152,594	65,456	1,370	2,352	622,288
January	140,038	64,546	53,834	23,535	447	837	218,691
February	128,601	64,220	50,733	20,292	374	789	200,789
March	131,877	71,296	48,027	21,629	549	726	202,808
Q2	336,695	200,932	81,845	43,331	1,276	1,083	464,230
April	126,557	72,532	34,472	15,977	481	468	177,955
May	105,143	62,431	25,399	14,226	458	338	145,564
June	104,995	65,969	21,974	13,128	337	277	140,711
Q3	347,999	185,222	98,738	37,841	1,287	1,557	487,422
July	110,909	60,567	35,795	16,128	424	561	163,817
August	119,783	63,865	39,139	11,823	426	497	171,668
September	117,307	60,790	23,804	9,890	437	499	151,937
Q4	398,171	222,445	131,565	54,502	1,470	1,929	587,637
October	110,403	62,035	30,895	14,876	437	494	157,105
November	122,740	67,736	51,761	20,088	393	588	195,570
December	165,028	92,674	48,909	19,538	640	847	234,962
Total	1,483,381	808,661	464,742	201,130	5,403	6,921	2,161,577
share (%)	68.62%	37.41%	21.50%	9.30%	0.25%	0.32%	100.00%





Visitor arrivals to Cambodia by country of residence in 2009

(by all means of transportation)

Regions Country of Residence	Visitor Arrivals												Total	Females	share (%)
	Jan	Feb	Mar	Apr	May	Jun	Jul	Aug	Sep	Oct	Nov	Dec			
GRAND TOTAL	218,691	200,789	202,808	177,955	145,564	140,711	163,817	171,668	151,937	157,105	195,570	234,962	2,161,577	905,098	100.00%
Asia and the Pacific	128,428	116,588	121,833	110,996	95,894	97,730	106,528	115,768	113,582	105,795	111,492	142,905	1,367,539	591,299	63.27%
ASEAN	52,936	52,207	61,252	56,971	53,182	58,704	56,186	59,850	57,065	57,427	56,488	70,551	692,819	307,925	32.05%
Brunei Darussalam	33	23	19	25	43	22	48	24	33	28	49	59	406	167	0.02%
Indonesia	888	550	657	796	697	611	665	735	866	774	1,385	961	9,585	3,437	0.44%
Laos	7,453	7,839	9,509	6,716	9,965	11,226	8,754	8,556	7,910	5,555	4,500	6,198	94,181	61,748	4.36%
Malaysia	5,560	6,145	6,681	4,959	5,306	6,277	6,350	6,204	6,163	6,241	7,751	10,122	77,759	25,644	3.60%
Myanmar	194	166	209	273	203	115	222	156	181	167	218	212	2,316	838	0.11%
Philippines	4,148	4,278	4,444	4,554	4,363	3,396	3,997	3,497	3,931	3,756	4,313	4,402	49,079	28,460	2.27%
Singapore	2,739	2,544	3,552	2,736	2,970	3,761	2,614	2,965	3,107	2,969	4,877	6,439	41,273	14,723	1.91%
Thailand	9,046	8,494	8,900	8,835	7,656	7,955	9,086	7,887	8,177	10,379	6,642	8,961	102,018	34,045	4.72%
Vietnam	22,875	22,168	27,281	28,077	21,979	25,341	24,450	29,826	26,697	27,558	26,753	33,197	316,202	138,863	14.63%
Eastern Asia	61,165	55,680	51,165	43,322	34,592	31,215	38,438	48,236	45,407	38,493	42,779	57,930	548,422	230,417	25.37%
China	16,893	12,067	9,508	10,204	7,781	5,695	7,987	10,513	10,089	11,904	12,253	13,316	128,210	52,703	5.93%
Hong Kong, China	410	281	298	238	230	166	217	319	380	411	398	540	3,888	1,603	0.18%
Japan	14,088	16,057	15,908	10,283	8,225	5,622	7,122	12,517	15,075	11,205	13,181	17,003	146,286	64,105	6.77%
Mongolia	9	10	4	56	13	11	12	14	15	15	17	18	194	83	0.01%
South Korea	22,524	22,045	19,370	16,744	13,269	12,393	17,384	18,170	15,166	10,274	12,086	18,310	197,725	81,015	9.15%
Taiwan, China	7,241	5,220	6,077	5,797	5,074	7,328	5,716	6,703	4,692	4,684	4,844	8,743	72,119	30,908	3.34%
Southern Asia	1,392	1,106	1,380	1,275	1,420	1,173	1,093	1,301	1,256	1,465	1,459	1,655	15,975	4,228	0.74%
Afghanistan	10	1	79	1	0	8	2	0	4	6	10	5	126	57	0.01%
Bangladesh	79	46	72	47	99	93	67	69	79	123	79	72	925	137	0.04%
India	1,077	891	1,009	1,014	1,091	918	881	1,021	1,014	1,080	1,120	1,345	12,461	3,485	0.58%
Nepal	76	60	72	92	86	61	33	81	61	102	97	87	908	253	0.04%
Pakistan	97	58	75	68	71	50	59	66	60	80	55	59	798	129	0.04%
Sri Lanka	53	50	73	53	73	43	51	64	38	74	98	87	757	167	0.04%
Oceania	11,972	7,225	7,639	7,271	5,618	5,633	8,726	5,978	8,466	8,235	10,142	11,773	98,678	42,032	4.57%
Australia	10,419	6,348	6,682	6,152	4,725	4,623	7,523	5,061	7,297	6,998	8,733	10,020	84,581	36,305	3.91%
New Zealand	1,553	877	957	1,119	893	1,010	1,203	917	1,169	1,237	1,409	1,753	14,097	5,727	0.65%
Others Asia & Pacific	963	370	397	2,157	1,082	1,005	2,085	403	1,388	175	624	996	11,645	6,697	0.54%
Europe	53,834	50,733	48,027	34,472	25,399	21,974	35,795	39,139	23,804	30,895	51,761	48,909	464,742	178,006	21.50%
Northern Europe	19,264	18,352	16,873	11,587	9,024	8,508	11,530	10,341	8,031	9,728	14,058	16,015	153,311	53,691	7.09%
Denmark	1,733	1,546	972	693	374	359	742	372	304	454	675	713	8,937	3,579	0.41%
Finland	1,332	1,117	672	312	268	262	362	169	209	439	602	815	6,559	2,257	0.30%
Iceland	25	35	28	11	9	12	9	11	4	15	10	14	183	59	0.01%
Ireland	886	718	757	576	587	637	1,129	912	537	724	887	687	9,037	3,622	0.42%
Norway	1,032	1,234	759	500	333	335	532	255	285	352	646	754	7,017	2,780	0.32%
Sweden	2,928	2,482	1,692	936	487	535	533	414	471	720	1,573	1,970	14,741	5,771	0.68%
United Kingdom	11,328	11,220	11,993	8,559	6,966	6,368	8,223	8,208	6,221	7,024	9,665	11,062	106,837	35,643	4.94%
Western Europe	25,155	24,492	24,249	16,532	11,818	9,992	17,823	19,000	10,551	15,226	27,775	23,444	226,057	86,464	10.46%
Austria	1,085	1,044	903	548	230	185	452	405	229	327	2,445	828	8,681	3,620	0.40%
Belgium	1,183	1,260	1,198	904	776	572	1,306	846	643	1,118	1,804	1,370	12,980	4,933	0.60%
France	10,993	10,663	10,836	8,423	5,926	5,312	9,105	10,240	4,687	6,913	11,413	10,926	105,437	40,642	4.88%
Germany	7,409	7,394	7,830	4,300	2,844	2,042	2,897	3,791	3,111	4,202	7,738	6,358	59,916	22,478	2.77%
Luxembourg	40	38	49	33	27	33	29	42	21	33	81	46	472	167	0.02%
Netherlands	2,514	2,200	1,976	1,270	1,271	953	2,351	2,297	1,086	1,571	2,352	2,217	22,058	8,904	1.02%
Switzerland	1,931	1,893	1,457	1,054	744	895	1,683	1,379	774	1,062	1,942	1,699	16,513	5,720	0.76%
Eastern Europe	4,930	3,746	3,547	2,249	1,740	1,032	1,327	1,668	1,692	2,747	5,148	4,631	34,457	16,216	1.59%
Bulgaria	38	20	40	30	28	11	16	17	47	17	84	36	384	193	0.02%
Czech	333	364	287	183	94	73	84	156	148	220	385	322	2,649	1,118	0.12%
Hungary	378	348	242	125	238	65	69	73	58	114	233	241	2,184	939	0.10%
Poland	774	816	534	330	134	163	245	303	306	593	1,469	652	6,319	3,076	0.29%
Romania	84	64	73	28	54	15	26	38	82	82	102	126	774	450	0.04%
Russia	2,988	1,823	2,085	1,309	1,029	639	765	954	813	1,456	2,548	2,986	19,395	9,233	0.90%
Slovakia	96	120	130	123	43	14	36	34	35	53	151	60	895	374	0.04%
Ukraine	239	191	156	121	120	52	86	93	203	212	176	208	1,857	833	0.09%
Southern Europe	3,554	3,836	3,017	2,036	1,776	1,459	3,100	7,778	2,578	3,052	4,024	3,935	40,145	16,561	1.86%
Croatia	50	14	26	36	11	16	18	10	16	30	40	46	313	137	0.01%
Greece	174	192	90	94	64	58	97	179	81	62	103	212	1,406	516	0.07%
Italy	2,193	2,115	1,624	825	576	545	958	3,082	686	885	1,724	1,941	17,154	6,351	0.79%
Portugal	135	149	351	236	119	125	136	436	147	203	222	222	2,481	1,157	0.11%
Slovenia	90	81	61	33	14	15	76	53	57	53	117	90	740	312	0.03%
Spain	751	986	683	731	931	631	1,715	3,912	1,470	1,702	1,605	1,194	16,311	7,585	0.75%
Turkey	161	299	182	81	61	69	100	106	121	117	213	230	1,740	503	0.08%
Others Europe	931	307	341	2,068	1,041	983	2,015	352	952	142	756	884	10,772	5,074	0.50%



Visitor arrivals to Cambodia by country of residence in 2009

(by all means of transportation)

Regions Country of Residence	Visitor Arrivals												Total	Females	share (%)
	Jan	Feb	Mar	Apr	May	Jun	Jul	Aug	Sep	Oct	Nov	Dec			
GRAND TOTAL	218,691	200,789	202,808	177,955	145,564	140,711	163,817	171,668	151,937	157,105	195,570	234,962	2,161,577	905,098	100.00%
Americas	23,535	20,292	21,629	15,977	14,226	13,128	16,128	11,823	9,890	14,876	20,088	19,538	201,130	82,458	9.30%
Argentina	184	162	219	147	111	90	83	82	151	136	166	186	1,717	751	0.08%
Brazil	289	220	219	153	191	104	108	112	129	236	209	234	2,204	1,091	0.10%
Canada	4,570	4,300	4,348	2,693	2,375	2,006	2,570	1,790	1,520	2,404	4,169	3,595	36,340	15,922	1.68%
Chile	286	291	212	109	225	101	121	91	100	122	144	141	1,943	926	0.09%
Colombia	65	61	60	50	68	63	152	79	58	118	79	89	942	471	0.04%
Mexico	172	227	224	224	162	163	248	135	185	298	301	383	2,722	1,369	0.13%
Peru	33	26	28	30	34	36	37	28	31	47	46	46	422	191	0.02%
United States	16,975	14,727	16,122	11,425	9,979	10,429	11,990	9,346	7,495	11,393	14,468	14,133	148,482	58,603	6.87%
Uruguay	43	13	10	3	179	17	3	9	6	10	16	4	313	153	0.01%
Others Americas	918	265	187	1,143	902	119	816	151	215	112	490	727	6,045	2,981	0.28%
Africa	447	374	549	481	458	337	424	426	437	437	393	640	5,403	1,416	0.25%
Cameroon	86	77	100	101	112	89	95	104	93	83	49	62	1,051	111	0.05%
Ghana	45	60	48	71	55	42	53	76	48	50	37	39	624	38	0.03%
Nigeria	87	82	114	130	86	76	94	92	89	85	83	82	1,100	78	0.05%
Sudan	4	4	3	2	2	2	0	0	3	4	4	4	32	6	0.00%
South Africa	198	131	198	148	176	117	171	132	109	191	187	346	2,104	952	0.10%
Others Africa	27	20	86	29	27	11	11	22	95	24	33	107	492	231	0.02%
Middle East	837	789	726	468	338	277	561	497	499	494	588	847	6,921	2,258	0.32%
Egypt	11	37	20	15	5	5	13	15	9	11	24	8	173	39	0.01%
Iran	37	22	18	28	34	17	34	25	38	37	18	30	338	51	0.02%
Israel	722	674	590	368	257	217	315	330	390	385	485	706	5,439	2,020	0.25%
Kuwait	43	38	35	28	18	25	189	114	34	39	36	34	633	13	0.03%
Palestine	0	0	0	0	0	0	0	0	0	0	0	0	0	0	0.00%
Saudi Arabia	4	3	7	5	6	7	2	1	0	4	4	5	48	6	0.00%
United Arab Emirates	0	0	0	0	0	0	0	0	0	0	0	0	0	0	0.00%
Others Middle East	20	15	56	24	18	6	8	12	28	18	21	64	290	129	0.01%
Same-day visitors	11,610	12,013	10,044	15,561	9,249	7,265	4,381	4,015	3,725	4,608	11,248	22,123	115,842	49,661	5.36%



Visitor arrivals to Cambodia by purpose of visit in 2009

(by all means of transportation)

Regions Country of Residence	2008		2009			share		change
			Purpose of Visit			Total	Females	(%)
			Tourists	Business	Others			2009*
								2009*/08
GRAND TOTAL	2,125,465	1,991,900	132,780	36,897	2,161,577	905,098	100.00%	1.70%
Asia and the Pacific	1,327,670	1,240,780	106,905	19,854	1,367,539	591,299	63.27%	3.00%
ASEAN	552,461	640,326	42,193	10,300	692,819	307,925	32.05%	25.41%
Brunei Darussalam	356	273	14	119	406	167	0.02%	14.04%
Indonesia	9,198	6,035	3,160	390	9,585	3,437	0.44%	4.21%
Lao PDR	60,933	93,292	126	763	94,181	61,748	4.36%	54.56%
Malaysia	80,738	72,157	5,311	291	77,759	25,644	3.60%	-3.69%
Myanmar	2,461	1,694	466	156	2,316	838	0.11%	-5.89%
Philippines	39,294	42,600	5,292	1,187	49,079	28,460	2.27%	24.90%
Singapore	40,945	39,413	1,652	208	41,273	14,723	1.91%	0.80%
Thailand	109,020	84,334	15,058	2,626	102,018	34,045	4.72%	-6.42%
Vietnam	209,516	300,528	11,114	4,560	316,202	138,863	14.63%	50.92%
Eastern Asia	646,432	487,232	55,403	5,787	548,422	230,417	25.37%	-15.16%
China	129,626	96,424	30,467	1,319	128,210	52,703	5.93%	-1.09%
Hong Kong, China	3,320	3,430	452	6	3,888	1,603	0.18%	17.11%
Japan	163,806	139,180	4,691	2,415	146,286	64,105	6.77%	-10.70%
Mongolia	155	153	16	25	194	83	0.01%	25.16%
South Korea	266,525	183,491	12,260	1,974	197,725	81,015	9.15%	-25.81%
Taiwan, China	83,000	64,554	7,517	48	72,119	30,908	3.34%	-13.11%
Southern Asia	15,452	11,442	3,389	1,144	15,975	4,228	0.74%	3.38%
Afghanistan	40	95	3	28	126	57	0.01%	215.00%
Bangladesh	708	568	231	126	925	137	0.04%	30.65%
India	12,467	9,303	2,544	614	12,461	3,485	0.58%	-0.05%
Nepal	929	585	195	128	908	253	0.04%	-2.26%
Pakistan	577	460	179	159	798	129	0.04%	38.30%
Sri Lanka	731	431	237	89	757	167	0.04%	3.56%
Oceania	99,087	90,812	5,580	2,286	98,678	42,032	4.57%	-0.41%
Australia	84,957	77,877	4,723	1,981	84,581	36,305	3.91%	-0.44%
New Zealand	14,130	12,935	857	305	14,097	5,727	0.65%	-0.23%
Others Asia & the Pacific	14,238	10,968	340	337	11,645	6,697	0.54%	-18.21%
Europe	457,471	438,087	16,364	10,291	464,742	178,006	21.50%	1.59%
Northern Europe	153,376	145,074	5,560	2,677	153,311	53,691	7.09%	-0.04%
Denmark	9,371	8,500	259	178	8,937	3,579	0.41%	-4.63%
Finland	6,833	6,193	171	195	6,559	2,257	0.30%	-4.01%
Iceland	274	180	3	0	183	59	0.01%	-33.21%
Ireland	11,255	8,579	274	184	9,037	3,622	0.42%	-19.71%
Norway	7,875	6,679	199	139	7,017	2,760	0.32%	-10.90%
Sweden	19,675	14,023	436	282	14,741	5,771	0.68%	-25.08%
United Kingdom	98,093	100,920	4,218	1,699	106,837	35,643	4.94%	8.91%
Western Europe	215,227	211,080	8,899	6,078	226,057	86,464	10.46%	5.03%
Austria	7,276	8,526	108	47	8,681	3,620	0.40%	19.31%
Belgium	13,179	12,032	497	451	12,980	4,933	0.60%	-1.51%
France	97,517	96,169	5,672	3,596	105,437	40,642	4.88%	8.12%
Germany	59,903	57,387	1,319	1,210	59,916	22,478	2.77%	0.02%
Luxembourg	486	419	13	40	472	167	0.02%	-2.88%
Netherlands	22,408	20,835	736	487	22,058	8,904	1.02%	-1.56%
Switzerland	14,458	15,712	554	247	16,513	5,720	0.76%	14.21%
Eastern Europe	30,219	33,220	817	420	34,457	16,216	1.59%	14.02%
Bulgaria	322	365	4	15	384	193	0.02%	19.25%
Czech	2,147	2,555	48	46	2,649	1,118	0.12%	23.38%
Hungary	2,193	2,056	82	46	2,184	939	0.10%	-0.41%
Poland	5,630	6,246	24	49	6,319	3,076	0.29%	12.24%
Romania	569	742	23	9	774	450	0.04%	36.03%
Russia	16,927	18,656	538	201	19,395	9,233	0.90%	14.58%
Slovakia	762	840	12	43	895	374	0.04%	17.45%
Ukraine	1,669	1,760	86	11	1,857	833	0.09%	11.26%
Southern Europe	44,795	38,471	836	838	40,145	16,561	1.86%	-10.38%
Croatia	355	279	8	26	313	137	0.01%	-11.83%
Greece	1,441	1,363	21	22	1,406	516	0.07%	-2.43%
Italy	19,516	16,353	404	397	17,154	6,351	0.79%	-12.10%
Portugal	2,284	2,412	40	29	2,481	1,157	0.11%	8.63%
Slovenia	891	707	15	18	740	312	0.03%	-16.95%
Spain	18,344	15,834	207	270	16,311	7,585	0.75%	-11.08%
Turkey	1,964	1,523	141	76	1,740	503	0.08%	-11.41%
Others Europe	13,854	10,242	252	278	10,772	5,074	0.50%	-22.25%



Visitor Arrivals to Cambodia by purpose of visit in 2009

(by all means of transportation)

Regions Country of Residence	2008	2009			Total	Females	share	change
		Purpose of Visit					2009*	2009* / 08
		Tourists	Business	Others				
GRAND TOTAL	2,125,465	1,991,900	132,780	36,897	2,161,577	905,098	100.00%	1.70%
Americas	204,878	185,856	8,844	6,430	201,130	82,458	9.30%	-1.83%
Argentina	1,645	1,658	25	34	1,717	751	0.08%	4.38%
Brazil	2,058	2,117	16	71	2,204	1,091	0.10%	7.09%
Canada	36,891	33,887	1,669	784	36,340	15,922	1.68%	-1.49%
Chile	1,639	1,853	66	24	1,943	926	0.09%	18.55%
Colombia	785	863	23	56	942	471	0.04%	20.00%
Mexico	3,379	2,680	15	27	2,722	1,369	0.13%	-19.44%
Peru	388	389	16	17	422	191	0.02%	8.76%
United States	145,079	136,391	6,853	5,238	148,482	58,603	6.87%	2.35%
Uruguay	167	310	0	3	313	153	0.01%	87.43%
Others Americas	12,847	5,708	161	176	6,045	2,981	0.28%	-52.95%
Africa	4,040	4,746	478	179	5,403	1,416	0.25%	33.74%
Cameroon	340	989	43	19	1,051	111	0.05%	209.12%
Ghana	132	589	20	15	624	38	0.03%	372.73%
Nigeria	999	805	255	40	1,100	78	0.05%	10.11%
Sudan	38	22	3	7	32	6	0.00%	-15.79%
South Africa	2,180	1,932	124	48	2,104	952	0.10%	-3.49%
Others Africa	351	409	33	50	492	231	0.02%	40.17%
Middle East	7,375	6,589	189	143	6,921	2,258	0.32%	-6.16%
Egypt	155	145	15	13	173	39	0.01%	11.61%
Iran	297	312	17	9	338	51	0.02%	13.80%
Israel	6,131	5,227	137	75	5,439	2,020	0.25%	-11.29%
Kuwait	472	629	1	3	633	13	0.03%	34.11%
Palestine	0	0	0	0	0	0	0.00%	
Saudi Arabia	52	38	2	8	48	6	0.00%	-7.69%
United Arab Emirates	0	0	0	0	0	0	0.00%	
Others Middle East	268	238	17	35	290	129	0.01%	8.21%
Same-day visitors	124,031	115,842	0	0	115,842	49,661	5.36%	-6.60%



Visitor arrivals to Cambodia by purpose of visit by air in 2008 - 2009

(by air only)

Regions Country of Residence	2008		2009			Total	Females	share	change
	Purpose of Visit			2009*	2009*/08				
	Tourist	Business	Others			(%)	(%)		
GRAND TOTAL	1,239,407	997,467	86,601	27,661	1,111,729	455,310	100.00%	-10.30%	
Asia and the Pacific	821,753	627,826	67,055	12,953	707,834	298,885	63.67%	-13.86%	
ASEAN	172,654	140,177	16,334	4,648	161,159	59,307	14.50%	-6.66%	
Brunei Darussalam	281	239	12	117	368	152	0.03%	30.96%	
Indonesia	5,220	3,683	873	309	4,865	1,900	0.44%	-6.80%	
Laos	2,128	2,099	70	431	2,600	743	0.23%	22.18%	
Malaysia	67,512	57,245	4,026	259	61,530	22,011	5.53%	-8.86%	
Myanmar	1,635	1,003	332	146	1,481	483	0.13%	-9.42%	
Philippines	8,978	8,075	1,081	492	9,648	4,359	0.87%	7.46%	
Singapore	35,439	32,899	1,408	188	34,495	13,776	3.10%	-2.66%	
Thailand	35,909	20,214	7,643	1,622	29,479	10,043	2.65%	-17.91%	
Vietnam	15,552	14,720	889	1,084	16,693	5,840	1.50%	7.34%	
Eastern Asia	565,038	418,652	43,370	4,981	467,003	207,481	42.01%	-17.35%	
China	114,374	85,947	25,319	1,273	112,539	46,950	10.12%	-1.60%	
Hong Kong, China	1,486	1,260	132	4	1,396	701	0.13%	-6.06%	
Japan	142,367	121,483	3,898	2,212	127,593	60,156	11.48%	-10.38%	
Mongolia	80	62	10	23	95	49	0.01%	18.75%	
South Korea	228,560	151,862	8,322	1,425	161,609	71,133	14.54%	-29.29%	
Taiwan, China	78,171	58,038	5,689	44	63,771	28,492	5.74%	-18.42%	
Southern Asia	11,168	8,758	2,505	1,054	12,317	3,521	1.11%	10.29%	
Afghanistan	37	24	3	28	55	15	0.00%	48.65%	
Bangladesh	599	437	192	124	753	123	0.07%	25.71%	
India	8,866	7,212	1,816	570	9,598	2,962	0.86%	8.26%	
Nepal	645	424	141	107	672	174	0.06%	4.19%	
Pakistan	421	315	147	143	605	101	0.05%	43.71%	
Sri Lanka	600	346	206	82	634	146	0.06%	5.67%	
Oceania	66,171	58,167	4,654	2,084	64,905	27,724	5.84%	-1.91%	
Australia	57,145	50,196	3,934	1,803	55,933	24,391	5.03%	-2.12%	
New Zealand	9,026	7,971	720	281	8,972	3,333	0.81%	-0.60%	
Others Asia & the Pacific	6,722	2,072	192	186	2,450	852	0.22%	-63.55%	
Europe	267,434	240,622	12,333	8,874	261,829	99,464	23.55%	-2.10%	
Northern Europe	74,360	66,825	4,100	2,426	73,351	26,129	6.60%	-1.36%	
Denmark	4,879	4,102	205	167	4,474	1,855	0.40%	-8.30%	
Finland	3,299	2,638	104	187	2,929	1,176	0.26%	-11.22%	
Iceland	30	8	0	0	8	2	0.00%	-73.33%	
Ireland	4,916	3,601	214	166	3,981	1,574	0.36%	-19.02%	
Norway	4,164	3,004	158	132	3,294	1,382	0.30%	-20.89%	
Sweden	9,352	5,782	319	269	6,370	2,628	0.57%	-31.89%	
United Kingdom	47,720	47,690	3,100	1,505	52,295	17,512	4.70%	9.59%	
Western Europe	138,364	132,245	6,885	5,203	144,333	54,016	12.98%	4.31%	
Austria	4,180	4,047	74	43	4,164	1,858	0.37%	-0.38%	
Belgium	8,632	6,886	364	390	7,640	3,012	0.69%	-11.49%	
France	71,505	69,770	4,569	3,119	77,458	29,353	6.97%	8.33%	
Germany	34,819	32,360	931	984	34,275	12,289	3.08%	-1.56%	
Luxembourg	330	298	12	38	348	125	0.03%	5.45%	
Netherlands	10,114	8,987	576	414	9,977	3,897	0.90%	-1.35%	
Switzerland	8,784	9,897	359	215	10,471	3,482	0.94%	19.21%	
Eastern Europe	17,304	14,415	574	362	15,351	6,889	1.38%	-11.29%	
Bulgaria	207	254	3	13	270	138	0.02%	30.43%	
Czech	1,089	1,216	42	39	1,297	527	0.12%	19.10%	
Hungary	1,444	1,247	30	42	1,319	590	0.12%	-8.66%	
Poland	2,683	2,727	18	40	2,785	1,284	0.25%	3.80%	
Romania	480	556	17	9	582	277	0.05%	21.25%	
Russia	9,966	7,329	388	171	7,888	3,589	0.71%	-20.85%	
Slovakia	414	385	8	38	431	157	0.04%	4.11%	
Ukraine	1,021	701	68	10	779	327	0.07%	-23.70%	
Southern Europe	31,153	25,154	632	735	26,521	11,683	2.39%	-14.87%	
Croatia	196	152	7	25	184	75	0.02%	-6.12%	
Greece	967	977	19	18	1,014	431	0.09%	4.86%	
Italy	13,335	10,046	293	360	10,699	4,348	0.96%	-19.77%	
Portugal	1,777	1,777	29	28	1,834	869	0.16%	3.21%	
Slovenia	478	377	10	11	398	174	0.04%	-16.74%	
Spain	13,128	10,956	155	236	11,347	5,418	1.02%	-13.57%	
Turkey	1,272	869	119	57	1,045	368	0.09%	-17.85%	
Others Europe	6,253	1,983	142	148	2,273	747	0.20%	-63.65%	



Visitor arrivals to Cambodia by purpose of visit by air in 2008 - 2009

(by air only)

Regions Country of Residence	2008	2009			Total	Females	share	change
		Purpose of Visit					(%)	(%)
		Tourist	Business	Others			2009*	2009*/08
GRAND TOTAL	1,239,407	997,467	86,601	27,661	1,111,729	455,310	100.00%	-10.30%
Americas	145,490	124,872	6,745	5,593	137,210	55,431	12.34%	-5.69%
Argentina	787	829	16	33	878	397	0.08%	11.56%
Brazil	1,362	1,335	16	61	1,412	702	0.13%	3.67%
Canada	22,782	18,060	1,251	705	20,016	8,600	1.80%	-12.14%
Chile	840	807	7	15	829	406	0.07%	-1.31%
Colombia	611	571	19	44	634	317	0.06%	3.76%
Mexico	2,877	2,159	13	25	2,197	1,088	0.20%	-23.64%
Peru	292	229	9	12	250	116	0.02%	-14.38%
United States	110,576	99,407	5,320	4,589	109,316	43,265	9.83%	-1.14%
Uruguay	133	221	0	3	224	116	0.02%	68.42%
Others Americas	5,230	1,254	94	106	1,454	424	0.13%	-72.20%
Africa	2,253	1,945	325	145	2,415	694	0.22%	7.19%
Cameroon	35	87	12	15	114	24	0.01%	225.71%
Ghana	41	44	10	13	67	7	0.01%	63.41%
Nigeria	742	583	195	35	813	70	0.07%	9.57%
Sudan	36	18	3	7	28	5	0.00%	-22.22%
South Africa	1,186	1,087	93	43	1,223	526	0.11%	3.12%
Others Africa	213	126	12	32	170	62	0.02%	-20.19%
Middle East	2,477	2,202	143	96	2,441	836	0.22%	-1.45%
Egypt	95	88	13	12	113	36	0.01%	18.95%
Iran	122	90	13	9	112	36	0.01%	-8.20%
Israel	2,030	1,891	111	46	2,048	726	0.18%	0.89%
Kuwait	42	20	1	3	24	4	0.00%	-42.86%
Palestine	0				0		0.00%	
Saudi Arabia	41	24	2	3	29	4	0.00%	-29.27%
United Arab Emirates	0				0		0.00%	
Others Middle East	147	89	3	23	115	30	0.01%	-21.77%



Visitor arrivals to Cambodia by mode of arrivals in 2008 - 2009

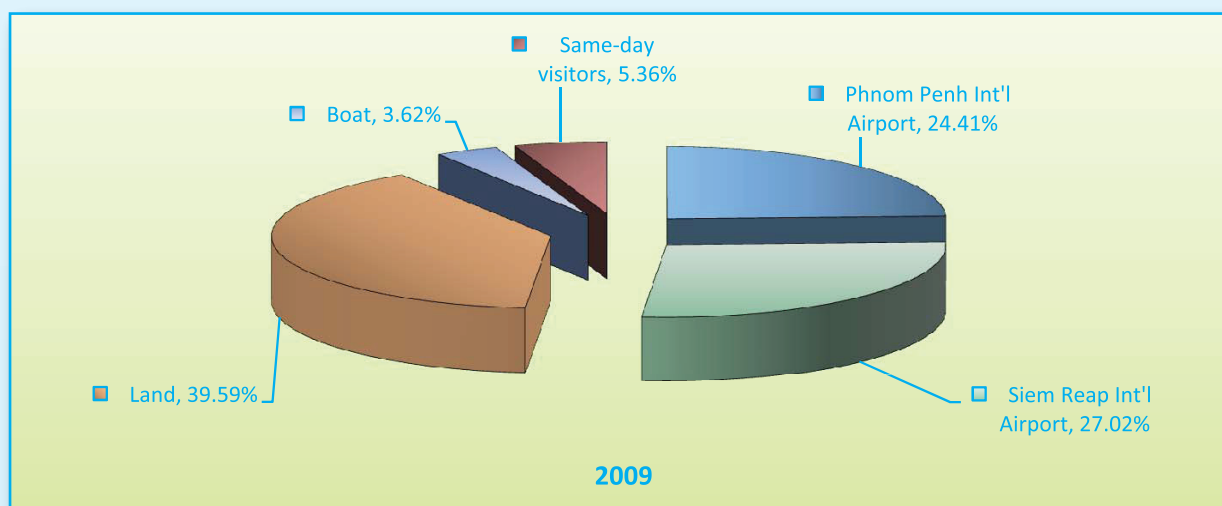
(by all mean of transports)

Months	2008					2009					change (%) 09*/08
	air	land	boat	same-day visitors	Total	air	land	boat	same-day visitors	Total	
Q1	402,023	193,738	27,232	21,212	644,205	335,213	220,179	33,229	33,667	622,288	-3.40
January	136,211	66,068	12,937	8,365	223,581	121,238	76,375	9,468	11,610	218,691	-2.19
February	135,736	65,846	6,355	6,965	214,902	109,122	70,328	9,326	12,013	200,789	-6.57
March	130,076	61,824	7,940	5,882	205,722	104,853	73,476	14,435	10,044	202,808	-1.42
Q2	262,025	159,579	11,117	21,310	454,031	221,221	200,091	10,843	32,075	464,230	2.25
April	101,305	57,871	3,375	11,352	173,903	86,785	71,691	3,918	15,561	177,955	2.33
May	86,064	52,437	5,470	5,304	149,275	70,585	62,249	3,481	9,249	145,564	-2.49
June	74,656	49,271	2,272	4,654	130,853	63,851	66,151	3,444	7,265	140,711	7.53
Q3	259,190	163,262	14,226	13,015	449,693	247,173	214,572	13,556	12,121	487,422	8.39
July	83,242	56,985	3,996	4,226	148,449	83,117	71,040	5,279	4,381	163,817	10.35
August	93,184	56,637	4,655	1,622	156,098	91,385	71,557	4,711	4,015	171,668	9.97
September	82,764	49,640	5,575	7,167	145,146	72,671	71,975	3,566	3,725	151,937	4.68
Q4	316,169	173,559	19,314	68,494	577,536	308,122	220,855	20,681	37,979	587,637	1.75
October	93,175	48,230	4,438	10,875	156,718	85,671	63,006	3,820	4,608	157,105	0.25
November	107,791	58,694	8,604	16,460	191,549	104,726	68,269	11,327	11,248	195,570	2.10
December	115,203	66,635	6,272	41,159	229,269	117,725	89,580	5,534	22,123	234,962	2.48
Total	1,239,407	690,138	71,889	124,031	2,125,465	1,111,729	855,697	78,309	115,842	2,161,577	1.70

Visitor arrivals to Cambodia by mode of arrivals in 2004 - 2009

(by all mean of transports)

Mode of arrivals	visitor arrivals						share (%) 2009*	change (%) 09*/08
	2004	2005	2006	2007	2008	2009		
Air	626,121	856,521	1,027,064	1,296,513	1,239,407	1,111,729	51.43	-10.30
Phnom Penh Int'l Airport	316,748	416,396	427,389	535,262	570,903	527,745	24.41	-7.56
Siem Reap Int'l Airport	309,373	440,125	599,675	761,251	668,504	583,984	27.02	-12.64
Land & waterways	361,238	476,479	564,286	576,054	762,027	934,006	43.21	22.57
Land	335,859	444,818	524,501	532,366	690,138	855,697	39.59	23.99
Boat	25,379	31,661	39,785	43,688	71,889	78,309	3.62	8.93
Same-day visitors	67,843	88,615	108,691	142,561	124,031	115,842	5.36	-6.60
Total	1,055,202	1,421,615	1,700,041	2,015,128	2,125,465	2,161,577	100.00	1.70





Top ten generating market from 2004 - 2009

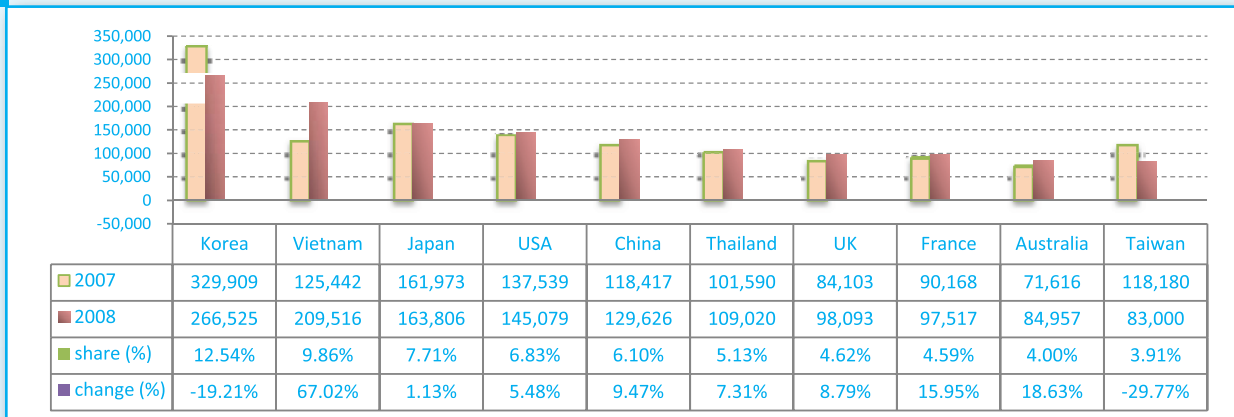
2004				
rank	2004	visitors	share (%)	change (%)
1	Korea	128,423	12.17	106.23
2	Japan	118,157	11.20	33.66
3	U.S.A	94,951	9.00	43.60
4	United Kingdom	64,129	6.08	27.58
5	France	58,076	5.50	27.93
6	Thailand	55,086	5.22	54.22
7	Taiwan, China	53,041	5.03	42.03
8	China	46,325	4.39	19.81
9	Australia	38,211	3.62	43.45
10	Malaysia	32,864	3.11	25.03

2005				
rank	2005	visitors	share (%)	change (%)
1	Korea	216,584	15.24	68.65
2	Japan	137,849	9.70	16.67
3	U.S.A	109,419	7.70	15.24
4	France	68,947	4.85	18.72
5	United Kingdom	66,535	4.68	3.75
6	Thailand	63,631	4.48	15.51
7	China	59,153	4.16	27.69
8	Taiwan, China	54,771	3.85	3.26
9	Vietnam	49,642	3.49	35.96
10	Australia	47,465	3.34	24.22

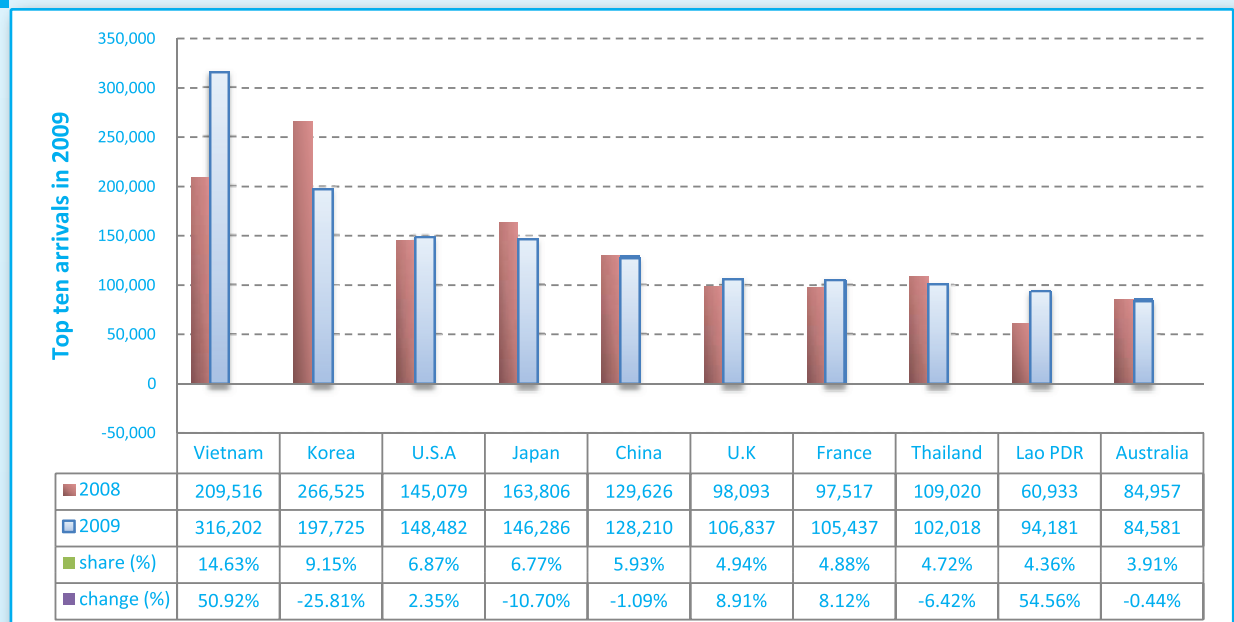
2006				
rank	2006	visitors	share (%)	change (%)
1	Korea	285,353	16.79	31.75
2	Japan	158,353	9.31	14.87
3	U.S.A	123,847	7.28	13.19
4	Taiwan, China	85,139	5.01	55.45
5	China	80,540	4.74	36.16
6	Vietnam	77,524	4.56	56.17
7	Malaysia	77,028	4.53	108.88
8	Thailand	76,953	4.53	20.94
9	United Kingdom	73,767	4.34	10.87
10	France	71,978	4.23	4.40

2007				
rank	2007	visitors	share (%)	change (%)
1	Korea	329,909	16.37	15.61
2	Japan	161,973	8.04	2.29
3	USA	137,539	6.83	11.06
4	Vietnam	125,442	6.23	61.81
5	China	118,417	5.88	47.03
6	Taiwan, China	118,180	5.86	38.81
7	Thailand	101,590	5.04	32.02
8	France	90,168	4.47	25.27
9	UK	84,103	4.17	14.01
10	Malaysia	84,039	4.17	9.10

2008



2009





Visitor arrivals to Cambodia by international border check-points in 2009

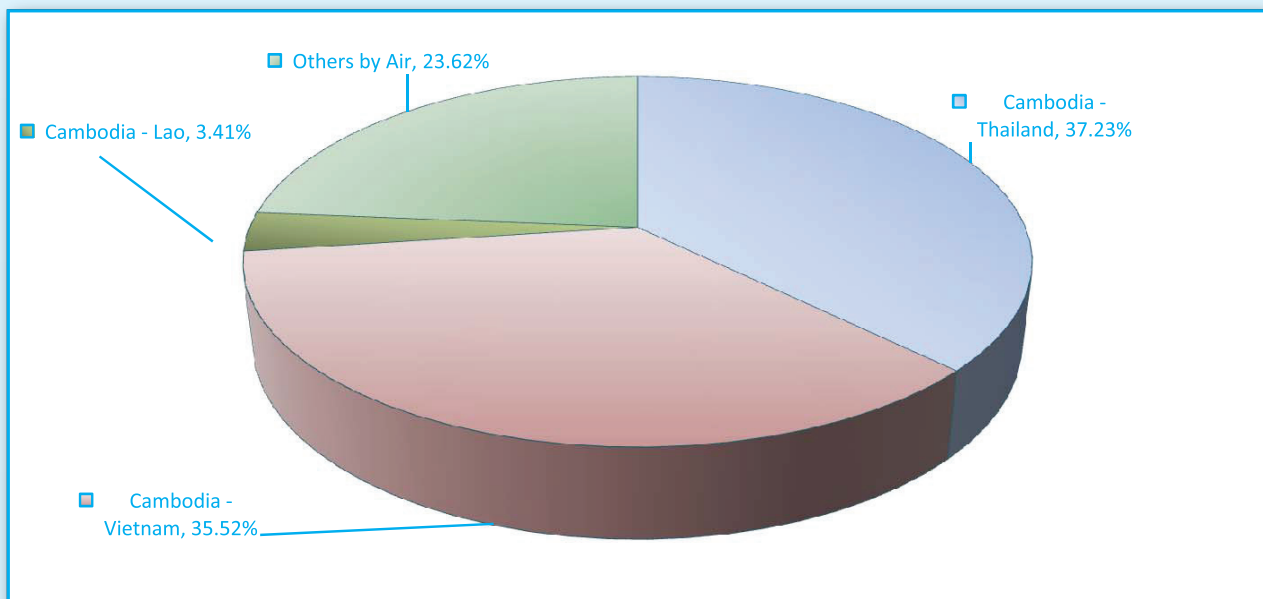
No. International border check-points	Months												TOTAL	share (%)
	Jan	Feb	Mar	Apr	May	Jun	Jul	Aug	Sep	Oct	Nov	Dec		
Grand Total	218,691	200,789	202,808	177,955	145,564	140,711	163,817	171,668	151,937	157,105	195,570	234,962	2,161,577	100.00%
Air	121,238	109,122	104,853	86,785	70,585	63,851	83,117	91,385	72,671	85,671	104,726	117,725	1,111,729	51.43%
Phnom Penh Int'l Airport	50,749	46,128	44,619	39,983	35,850	36,577	44,356	44,264	37,192	42,024	52,181	53,822	527,745	24.41%
Siem Reap Int'l Airport	70,489	62,994	60,234	46,802	34,735	27,274	38,761	47,121	35,479	43,647	52,545	63,903	583,984	27.02%
Lands and Water ways	85,843	79,654	87,911	75,609	65,730	69,595	76,319	76,268	75,541	66,826	79,596	95,114	934,006	43.21%
Lands	76,375	70,328	73,476	71,691	62,249	66,151	71,040	71,557	71,975	63,006	68,269	89,580	855,697	39.59%
Water ways	9,468	9,326	14,435	3,918	3,481	3,444	5,279	4,711	3,566	3,820	11,327	5,534	78,309	3.62%
Same-day visitors	11,610	12,013	10,044	15,561	9,249	7,265	4,381	4,015	3,725	4,608	11,248	22,123	115,842	5.36%
1 Cambodia - Thailand	43,790	42,807	46,963	32,879	34,534	32,789	38,415	36,113	31,546	32,495	35,854	42,550	450,735	20.85%
Poi Pet	28,205	27,165	29,075	24,820	25,425	25,797	29,061	29,139	25,050	25,418	23,786	33,134	326,075	15.09%
Cham Yeam	3,775	3,486	2,373	2,082	1,655	1,441	1,700	1,578	1,477	1,584	2,317	2,630	26,098	1.21%
Prom	1,493	433	592	814	977	909	1,014	1,072	1,159	1,073	1,324	1,659	12,519	0.58%
Daung	7,261	6,484	5,913	3,869	3,646	3,006	3,172	2,942	2,428	2,437	2,897	3,729	47,784	2.21%
O'Smach	1,350	970	938	846	828	919	826	1,024	739	748	1,091	877	11,156	0.52%
Chorm	492	800	644	448	437	717	588	358	693	1,063	477	521	7,238	0.33%
Sihanoukville (Int'l sea port)	1,214	3,469	7,428	0	1,566	0	2,054	0	0	172	3,962	0	19,865	0.92%
2 Cambodia - Vietnam	40,064	34,565	38,964	41,325	29,866	35,608	36,337	38,187	42,749	32,966	41,207	49,848	461,686	21.36%
Bavet	25,894	21,407	23,366	28,821	20,293	22,772	24,583	25,031	19,607	21,258	23,900	32,877	289,809	13.41%
Phnom Den	1,032	1,425	1,768	1,443	1,310	1,864	1,506	1,633	1,542	1,521	1,852	1,996	18,892	0.87%
Trapaing Plong	1,077	1,311	1,487	1,411	1,529	1,958	1,658	1,618	13,336	1,526	1,881	2,130	30,922	1.43%
Trapaing Sré	1,472	1,765	2,194	2,598	2,289	2,851	2,464	2,548	2,315	2,547	2,905	3,685	29,633	1.37%
Prek Chak	1,258	1,340	1,529	1,587	1,159	1,420	1,648	1,402	1,138	948	1,671	1,760	16,860	0.78%
Oya Da	342	861	923	815	533	545	497	518	509	688	876	845	7,952	0.37%
Bantey Chak Krey	735	599	690	732	838	754	756	726	736	830	757	1,021	9,174	0.42%
Kaam Samnor	7,804	5,444	6,694	3,918	1,915	3,444	3,195	4,632	3,409	3,332	6,852	5,178	55,817	2.58%
Phnom Penh Port	450	413	313	0	0	0	30	79	157	316	513	356	2,627	0.12%
3 Cambodia - Lao	1,989	2,282	1,984	1,405	1,330	1,198	1,567	1,968	1,246	1,365	2,535	2,716	21,585	1.00%
Trapaing Kreal	1,989	2,282	1,984	1,405	1,330	1,198	1,567	1,968	1,246	1,365	2,535	2,716	21,585	1.00%



Visitor arrivals to Cambodia by international border check-points in 2008 - 2009

(by Purpose of visit)

International border No. check-points	2008	2009			Total	share (%) 2009*	change (%) 2009*/08
		purpose of visit					
		tourist	business	others			
Grand Total	2,125,465	1,991,900	132,780	36,897	2,161,577	100.00%	1.70%
Air	1,239,407	997,467	86,601	27,661	1,111,729	51.43%	-10.30%
Phnom Penh Int'l Airport	570,903	422,896	81,881	22,968	527,745	24.41%	-7.56%
Siem Reap Int'l Airport	668,504	574,571	4,720	4,693	583,984	27.02%	-12.64%
Lands and Water ways	762,027	878,591	46,179	9,236	934,006	43.21%	22.57%
Lands	690,138	801,086	45,518	9,093	855,697	39.59%	23.99%
Water ways	71,889	77,505	661	143	78,309	3.62%	8.93%
Same-day visitors	124,031	115,842	0	0	115,842	5.36%	-6.60%
1 Cambodia - Thailand	389,277	427,544	20,340	2,851	450,735	20.85%	15.79%
Poi Pet	268,795	309,946	14,214	1,915	326,075	15.09%	21.31%
Cham Yeum	26,480	20,436	5,189	473	26,098	1.21%	-1.44%
Prom	4,516	12,025	405	89	12,519	0.58%	177.21%
Daung	58,333	47,645	123	16	47,784	2.21%	-18.08%
O'Smach	10,204	10,968	157	31	11,156	0.52%	9.33%
Chorm	8,986	6,659	252	327	7,238	0.33%	-19.45%
Sihanoukville (Int'l sea port)	11,963	19,865	0	0	19,865	0.92%	66.05%
2 Cambodia - Vietnam	356,847	430,053	25,583	6,050	461,686	21.36%	29.38%
Bavet	217,688	263,285	22,575	3,949	289,809	13.41%	33.13%
Phnom Den	15,496	18,263	373	256	18,892	0.87%	21.92%
Trapaing Plong	14,368	29,806	853	263	30,922	1.43%	115.21%
Trapaing Sré	11,579	28,529	668	436	29,633	1.37%	155.92%
Prek Chak	12,902	16,329	300	231	16,860	0.78%	30.68%
Oya Da	4,545	7,285	71	596	7,952	0.37%	74.96%
Bantey Chak Krey	20,343	8,916	82	176	9,174	0.42%	-54.90%
Kaam Samnor	57,942	55,013	661	143	55,817	2.58%	-3.67%
Phnom Penh Port	1,984	2,627	0	0	2,627	0.12%	32.41%
3 Cambodia - Lao	15,903	20,994	256	335	21,585	1.00%	35.73%
Trapaing Kreal	15,903	20,994	256	335	21,585	1.00%	35.73%





Cambodian Outbound Tourist Departures by Int'l Border Check Points in 2008 - 2009

(by Mode of Transports and Purpose of visit)

International border No. check-points	2008	2009			Total	share (%) 2009*	change (%) 2009*/08
		purpose of visit					
		tourist	business	others			
Grand Total	785,896	312,105	1,423	26,170	339,698	100.00%	-56.78%
1 Air	81,970	89,699	1,388	8,068	99,155	29.19%	20.96%
Phnom Penh Int'l Airport	79,173	85,142	1,388	7,906	94,436	27.80%	19.28%
Siem Reap Int'l Airport	2,797	4,557	0	162	4,719	1.39%	68.72%
Lands and Water ways	703,926	222,406	35	18,102	240,543	70.81%	-65.83%
Lands	703,319	221,828	35	18,101	239,964	70.64%	-65.88%
Water ways	607	578	0	1	579	0.17%	-4.61%
2 Cambodia - Thailand	593,430	65,298	0	2,431	67,729	19.94%	-88.59%
Poi Pet	346,031	57,366	0	1,421	58,787	17.31%	-83.01%
Cham Yeam	3,917	4,353	0	609	4,962	1.46%	26.68%
Prom	1,250	1,700	0	197	1,897	0.56%	51.76%
Daung	241,005	1,069	0	41	1,110	0.33%	-99.54%
O'Smach	531	545	0	61	606	0.18%	14.12%
Chorm	427	265	0	102	367	0.11%	-14.05%
Sihanoukville (Int'l sea port)	269	0	0	0	0		
3 Cambodia - Vietnam	105,819	153,401	35	15,268	168,704	49.66%	59.43%
Bavet	102,230	142,602	0	14,233	156,835	46.17%	53.41%
Phnom Den	1,886	4,044	0	353	4,397	1.29%	133.14%
Trapaing Plong	1,209	2,907	33	229	3,169	0.93%	162.12%
Trapaing Sré	156	638	0	154	792	0.23%	407.69%
Prek Chak		1,803	0	125	1,928	0.57%	
Oya Da		284	0	101	385	0.11%	
Bantey Chak Krey		545	2	72	619	0.18%	
Kaam Samnor	338	576	0	1	577	0.17%	70.71%
Phnom Penh Port		2	0	0	2	0.00%	
4 Cambodia - Lao	3,800	3,707	0	403	4,110	1.21%	8.16%
Trapaing Kreal	3,800	3,707	0	403	4,110	1.21%	8.16%
5 Others	877						

Cambodian Outbound Tourist Departures by Months in 2008 - 2009

Months	Cambodian Outbound		change (%) 2009*/08
	2008	2009	
January	261,007	20,021	-92.33%
February	236,375	19,871	-91.59%
March	101,342	21,558	-78.73%
April	26,791	29,481	10.04%
May	23,610	30,699	30.03%
June	19,430	24,426	25.71%
July	17,688	25,746	45.56%
August	20,611	30,934	50.08%
September	20,860	34,452	65.16%
October	19,027	36,550	92.10%
November	20,231	31,857	57.47%
December	18,924	34,103	80.21%
Total	785,896	339,698	-56.78%



International Outbound Tourist Departures by Int'l Border Check Points in 2008 - 2009

(by Mode of Transports and Purpose of visit)

International border No. check-points	2008	2009			Total	share (%) 2009*	change (%) 2009*/08
		purpose of visit					
		tourist	business	others			
Grand Total	1,868,194	1,807,190	114,397	30,240	1,951,827	100.00%	4.48%
1 Air	1,245,357	977,934	83,439	23,724	1,085,097	55.59%	-12.87%
Phnom Penh Int'l Airport	582,236	441,357	78,673	18,608	538,638	27.60%	-7.49%
Siem Reap Int'l Airport	663,121	536,577	4,766	5,116	546,459	28.00%	-17.59%
Lands and Water ways	622,837	829,256	30,958	6,516	866,730	44.41%	39.16%
Lands	592,736	775,706	30,484	6,467	812,657	41.64%	37.10%
Water ways	30,101	53,550	474	49	54,073	2.77%	79.64%
2 Cambodia - Thailand	378,266	455,800	5,347	1,161	462,308	23.69%	22.22%
Poi Pet	266,634	318,951	0	0	318,951	16.34%	19.62%
Cham Yeam	32,541	29,617	4,548	528	34,693	1.78%	6.61%
Prom	4,232	12,657	337	285	13,279	0.68%	213.78%
Daung	51,512	57,739	115	8	57,862	2.96%	12.33%
O'Smach	5,121	10,337	142	20	10,499	0.54%	105.02%
Chorm	5,636	6,296	205	320	6,821	0.35%	21.03%
Sihanoukville (Int'l sea port)	12,590	20,203	0	0	20,203	1.04%	60.47%
3 Cambodia - Vietnam	227,377	362,108	25,403	5,070	392,581	20.11%	72.66%
Bavet	192,405	232,788	22,506	3,311	258,605	13.25%	34.41%
Phnom Den	9,188	18,546	371	214	19,131	0.98%	108.22%
Trapaing Plong	5,107	16,203	986	144	17,333	0.89%	239.40%
Trapaing Sré	3,166	28,229	601	424	29,254	1.50%	824.01%
Prek Chak		17,422	219	192	17,833	0.91%	
Oya Da		6,743	171	559	7,473	0.38%	
Bantey Chak Krey		8,830	75	177	9,082	0.47%	
Kaam Samnor	17,511	31,414	474	49	31,937	1.64%	82.38%
Phnom Penh Port		1,933	0	0	1,933	0.10%	
4 Cambodia - Lao	7,995	11,348	208	285	11,841	0.61%	48.11%
Trapaing Kreal	7,995	11,348	208	285	11,841	0.61%	48.11%
5 Others	9,199						



International Outbound Tourist Departures by Country of Residence in 2009

(by purpose of visit)

Regions Country of Residence	2008		2009			share		change
			purpose of visit			Total	females	(%)
			tourist	business	others			2009*
GRAND TOTAL	1,868,194	1,807,190	114,397	30,240	1,951,827	836,298	100.00%	4.48%
Asia and the Pacific	1,238,303	1,203,331	93,317	16,529	1,313,177	577,576	67.28%	6.05%
ASEAN	540,515	622,509	33,910	9,246	665,665	294,474	34.10%	23.15%
Brunei Darussalam	339	308	7	74	389	185	0.02%	14.75%
Indonesia	9,506	7,735	1,861	385	9,981	3,756	0.51%	5.00%
Laos	62,820	91,298	95	716	92,109	61,342	4.72%	46.62%
Malaysia	77,700	69,218	5,332	276	74,826	25,323	3.83%	-3.70%
Myanmar	1,975	1,790	393	131	2,314	880	0.12%	17.16%
Philippines	38,987	43,641	3,694	990	48,325	28,482	2.48%	23.95%
Singapore	40,390	38,347	1,843	192	40,382	14,631	2.07%	-0.02%
Thailand	114,050	85,987	9,550	2,029	97,566	34,198	5.00%	-14.45%
Vietnam	194,748	284,185	11,135	4,453	299,773	125,677	15.36%	53.93%
Eastern Asia	589,597	468,263	52,081	4,427	524,771	234,072	26.89%	-10.99%
China	127,737	96,357	30,328	997	127,682	54,786	6.54%	-0.04%
Hong Kong, China	3,455	3,634	277	1	3,912	1,675	0.20%	13.23%
Japan	149,751	128,618	3,490	1,943	134,051	63,418	6.87%	-10.48%
Mongolia	140	108	10	25	143	94	0.01%	2.14%
South Korea	228,509	178,315	10,469	1,421	190,205	85,070	9.74%	-16.76%
Taiwan, China	80,005	61,231	7,507	40	68,778	29,029	3.52%	-14.03%
Southern Asia	14,578	11,973	2,530	918	15,421	3,843	0.79%	5.78%
Afghanistan	40	14	2	20	36	5	0.00%	-10.00%
Bangladesh	717	553	155	92	800	104	0.04%	11.58%
India	11,490	9,817	1,860	502	12,179	3,237	0.62%	6.00%
Nepal	969	642	149	92	883	234	0.05%	-8.88%
Pakistan	580	514	157	124	795	94	0.04%	37.07%
Sri Lanka	782	433	207	88	728	169	0.04%	-6.91%
Oceania	92,408	90,691	4,621	1,777	97,089	42,823	4.97%	5.07%
Australia	78,460	76,821	3,825	1,493	82,139	36,563	4.21%	4.69%
New Zealand	13,948	13,870	796	284	14,950	6,260	0.77%	7.18%
Others Asia & the Pacific	1,205	9,895	175	161	10,231	2,364	0.52%	749.05%
Europe	432,548	415,415	13,865	8,490	437,770	175,195	22.43%	1.21%
Northern Europe	147,151	135,568	4,582	2,345	142,495	53,855	7.30%	-3.16%
Denmark	9,356	8,444	181	158	8,783	3,526	0.45%	-6.12%
Finland	6,093	6,010	168	181	6,359	2,223	0.33%	4.37%
Iceland	253	231	17	0	248	93	0.01%	-1.98%
Ireland	11,261	8,715	239	153	9,107	3,696	0.47%	-19.13%
Norway	7,648	6,685	183	133	7,001	2,723	0.36%	-8.46%
Sweden	20,140	14,171	341	211	14,723	5,824	0.75%	-26.90%
United Kingdom	92,400	91,312	3,453	1,509	96,274	35,770	4.93%	4.19%
Western Europe	210,451	198,729	7,678	5,013	211,420	86,281	10.83%	0.46%
Austria	6,838	8,278	78	51	8,407	3,485	0.43%	22.95%
Belgium	13,418	12,012	503	433	12,948	5,028	0.66%	-3.50%
France	96,146	88,155	4,848	2,886	95,889	40,488	4.91%	-0.27%
Germany	59,265	54,950	1,136	974	57,060	22,225	2.92%	-3.72%
Luxembourg	473	430	13	34	477	183	0.02%	0.85%
Netherlands	22,450	21,100	653	407	22,160	9,079	1.14%	-1.29%
Switzerland	11,861	13,804	447	228	14,479	5,793	0.74%	22.07%
Eastern Europe	29,694	33,303	730	344	34,377	16,351	1.76%	15.77%
Bulgaria	297	362	7	14	383	200	0.02%	28.96%
Czech	2,067	2,492	42	32	2,566	1,058	0.13%	24.14%
Hungary	2,176	2,011	46	27	2,084	925	0.11%	-4.23%
Poland	5,515	6,346	26	37	6,409	3,185	0.33%	16.21%
Romania	624	894	27	15	936	510	0.05%	50.00%
Russia	16,676	18,540	493	180	19,213	9,172	0.98%	15.21%
Slovakia	735	920	14	35	969	438	0.05%	31.84%
Ukraine	1,604	1,738	75	4	1,817	863	0.09%	13.28%
Southern Europe	44,165	38,787	741	656	40,184	16,866	2.06%	-9.01%
Croatia	405	324	11	21	356	164	0.02%	-12.10%
Greece	1,427	1,371	17	20	1,408	527	0.07%	-1.33%
Italy	19,147	16,272	347	306	16,925	6,370	0.87%	-11.60%
Portugal	2,403	2,353	30	22	2,405	1,152	0.12%	0.08%
Slovenia	851	628	6	7	641	284	0.03%	-24.68%
Spain	18,041	16,405	207	222	16,834	7,891	0.86%	-6.69%
Turkey	1,891	1,434	123	58	1,615	478	0.08%	-14.60%
Others Europe	1,087	9,028	134	132	9,294	1,842	0.48%	755.01%



International Outbound Tourist Departures by Country of Residence in 2009

(by purpose of visit)

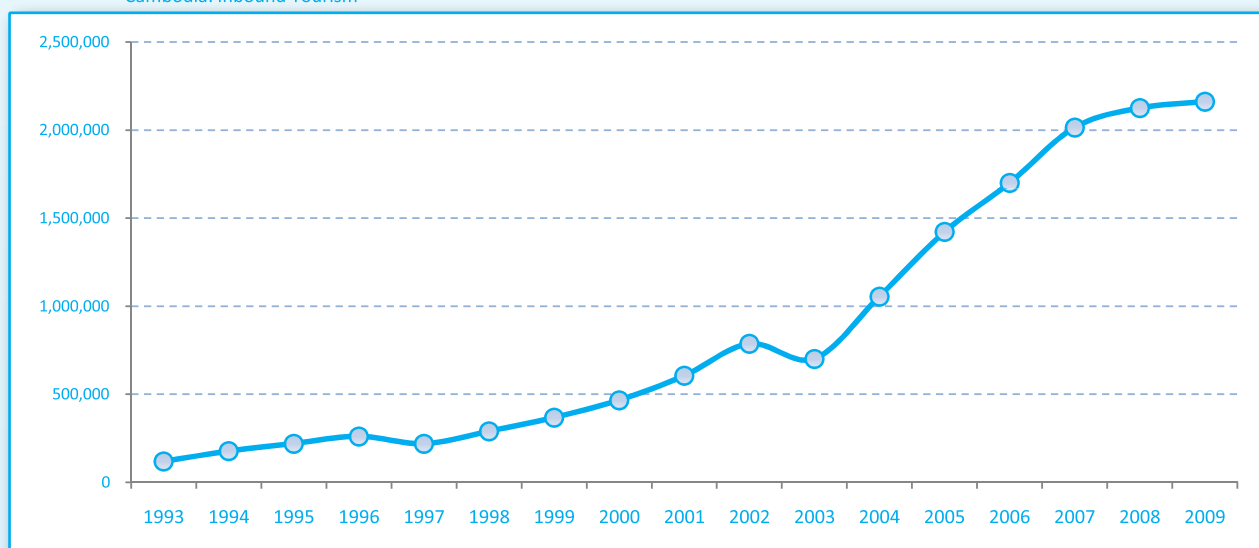
Regions Country of Residence	2008	2009			Total	females	share	change
		purpose of visit					(%)	(%)
		tourist	business	others			2009*	2009*/08
GRAND TOTAL	1,868,194	1,807,190	114,397	30,240	1,951,827	836,298	100.00%	4.48%
Americas	186,595	174,620	6,694	4,949	186,263	79,818	9.54%	-0.18%
Argentina	1,581	1,872	25	34	1,931	848	0.10%	22.14%
Brazil	2,067	2,128	20	58	2,206	1,081	0.11%	6.72%
Canada	35,641	33,738	1,254	588	35,580	15,993	1.82%	-0.17%
Chile	1,685	1,585	10	19	1,614	752	0.08%	-4.21%
Colombia	712	792	16	39	847	401	0.04%	18.96%
Mexico	3,389	2,704	24	25	2,753	1,389	0.14%	-18.77%
Peru	392	390	16	17	423	200	0.02%	7.91%
United States	139,905	124,403	5,231	4,071	133,705	57,220	6.85%	-4.43%
Uruguay	252	267	1	4	272	127	0.01%	7.94%
Others Americas	971	6,741	97	94	6,932	1,807	0.36%	613.90%
Africa	3,588	6,042	341	166	6,549	1,426	0.34%	82.53%
Cameroon	213	1,016	6	17	1,039	145	0.05%	387.79%
Ghana	137	583	11	14	608	50	0.03%	343.80%
Nigeria	888	717	170	33	920	66	0.05%	3.60%
Sudan	25	24	3	5	32	3	0.00%	28.00%
South Africa	2,165	1,832	115	43	1,990	959	0.10%	-8.08%
Others Africa	160	1,870	36	54	1,960	203	0.10%	1125.00%
Middle East	7,160	7,782	180	106	8,068	2,283	0.41%	12.68%
Egypt	146	157	5	9	171	40	0.01%	17.12%
Iran	264	350	14	10	374	59	0.02%	41.67%
Israel	6,093	5,262	132	50	5,444	2,024	0.28%	-10.65%
Kuwait	461	647	3	3	653	16	0.03%	41.65%
Palestine	0				0		0.00%	
Saudi Arabia	92	46	8	2	56	9	0.00%	-39.13%
United Arab Emirates	0				0		0.00%	
Others Middle East	104	1,320	18	32	1,370	135	0.07%	1217.31%



Major data in 1993 - 2009

Years	Visitor Arrivals		Average Length of Stay	Hotel Occupancy Rate	Tourism Receipts
	number	change (%)	(days)	(%)	million (US\$)
1993	118,183	0.00	N/A	N/A	N/A
1994	176,617	49.44%	N/A	N/A	N/A
1995	219,680	24.38%	8.00	37.00	100
1996	260,489	18.58%	7.50	40.00	118
1997	218,843	-15.99%	6.40	30.00	103
1998	289,524	32.30%	5.20	40.00	166
1999	367,743	27.02%	5.50	44.00	190
2000	466,365	26.82%	5.50	45.00	228
2001	604,919	29.71%	5.50	48.00	304
2002	786,524	30.02%	5.80	50.00	379
2003	701,014	-10.87%	5.50	50.00	347
2004	1,055,202	50.53%	6.30	52.00	578
2005	1,421,615	34.72%	6.30	52.00	832
2006	1,700,041	19.59%	6.50	54.79	1,049
2007	2,015,128	18.53%	6.50	54.79	1,403
2008	2,125,465	5.48%	6.65	62.68	1,595
2009	2,161,577	1.70%	6.45	63.57	1,561

Cambodia: Inbound Tourism



Average length of stay

Kind of tourist	Phnom Penh	Siem Reap	Expenditure (US\$/day)
	(days)	(days)	
Group tour	3.50	3.00	
Individual	5.12	4.79	
Total	3.58	3.16	117.25

Average expenditure of individual

Items	Expenditure (US\$)
Accommodation	148.28
Food & beverage	75.88
Souvenire	75.59
Local transport	71.90
Others	57.03
Average	425.67

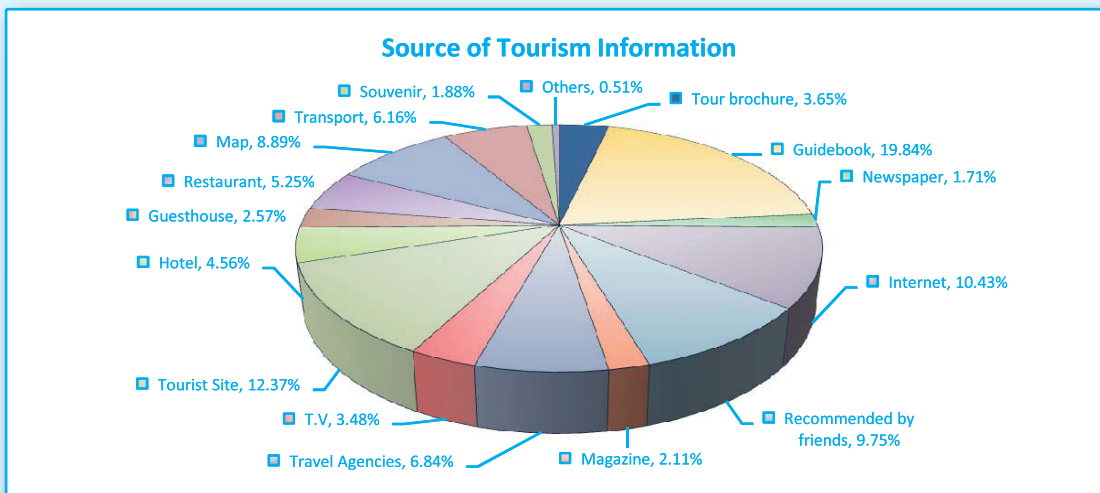
Average expenditure of group tours

Items	Expenditure (US\$)
Package Tours	908.65
Shopping	160.64
Others	66.64
Total	1,135.93



Profile of international visitor arrivals to Cambodia in 2007 - 2009 (Visitors Survey 2009)

Characteristic	2007		2008		2009	
	Phnom Penh (%)	Siem Reap (%)	Phnom Penh (%)	Siem Reap (%)	Phnom Penh (%)	Siem Reap (%)
Frequency of Visit	100.00	100.00	100.00	100.00	100.00	100.00
Firt Visit	89.00	53.6	79.00	58.54	64.80	68.13
Revisit	11.00	46.4	21.00	41.46	35.20	31.87
Travel Arrangement	100.00	100.00	100.00	100.00	100.00	100.00
Group Tour	51.27	62.00	55.73	69.18	53.67	53.00
Non Group Tour	48.73	38.00	44.27	30.82	46.33	47.00
Sex	100.00	99.14	100.00	100.00	100.00	100.00
Male	68.35	50.97	64.27	61.42	56.67	55.80
Female	31.65	48.17	35.73	38.58	43.33	44.20
Purpose of Visit	100.00	100.00	100.00	100.00	100.00	100.00
Leisure	97.15	73.43	95.19	78.62	83.20	87.60
Business	0.32	7.14	1.67	8.11	7.20	7.67
Official	0.16	5.94	0.26	4.72	1.67	1.06
Friend/Parents	0.16	6.52	0.57	5.83	1.93	0.87
Others	2.21	6.97	2.31	2.72	6.00	2.80
Age	100.00	100.00	100.00	100.00	100.00	100.00
Under - 19	5.38	12.63	10.87	13	12.23	13.18
20 - 29	24.06	19.37	26.08	19.46	20.45	21.81
30 - 39	22.47	18.63	22.54	19.42	20.35	20.98
40 - 49	19.46	17.71	17.83	17.89	18.21	19.74
50 - 59	17.56	17.03	14.21	18.43	18.56	17.23
60 - Over	11.07	14.63	8.47	11.8	10.20	7.06
Occupation	100.00	100.00	100.00	100.00	100.00	100.00
Employee	22.15	15.09	23.10	17.09	21.59	19.24
Business	21.36	14.80	22.21	16.42	24.25	18.31
Teacher	16.15	12.91	17.14	17.11	16.19	17.24
Retired	6.17	9.31	7.46	12.34	7.84	13.45
Official	4.43	8.69	5.35	10.21	6.82	9.14
Student	12.97	11.77	13.74	13.78	16.58	15.24
Others	16.77	27.43	11.00	13.05	6.73	7.38



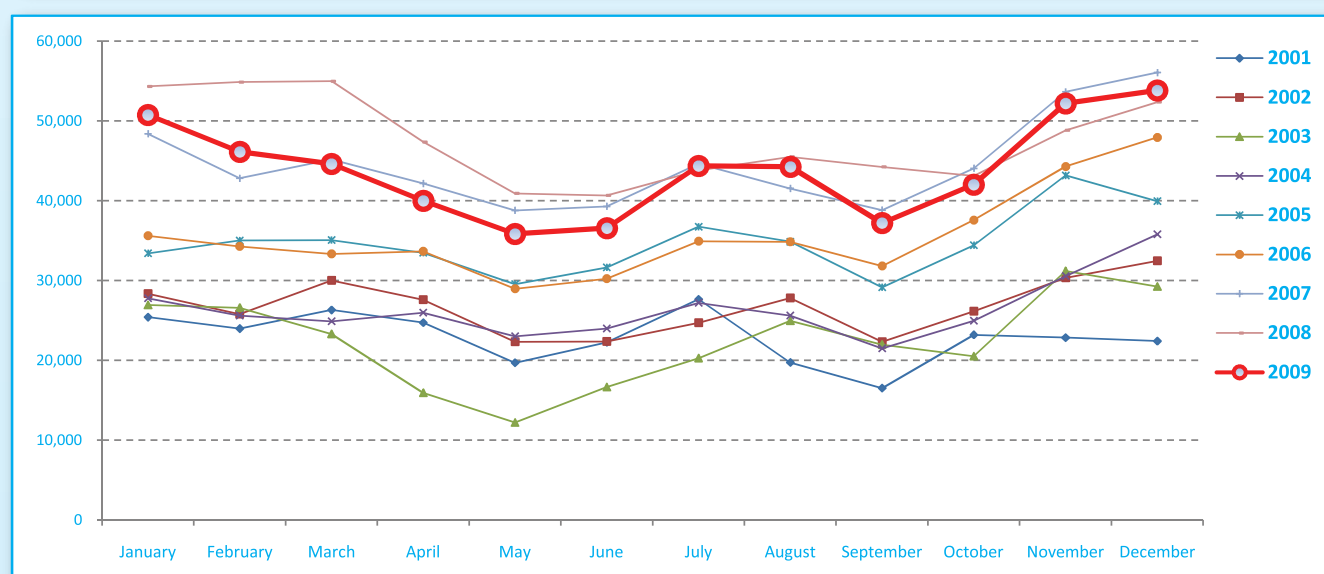
SECTION I

**PHNOM PENH INTERNATIONAL
AIRPORT**



Tourist arrivals to Phnom Penh International Airport by months in 2001 - 2009

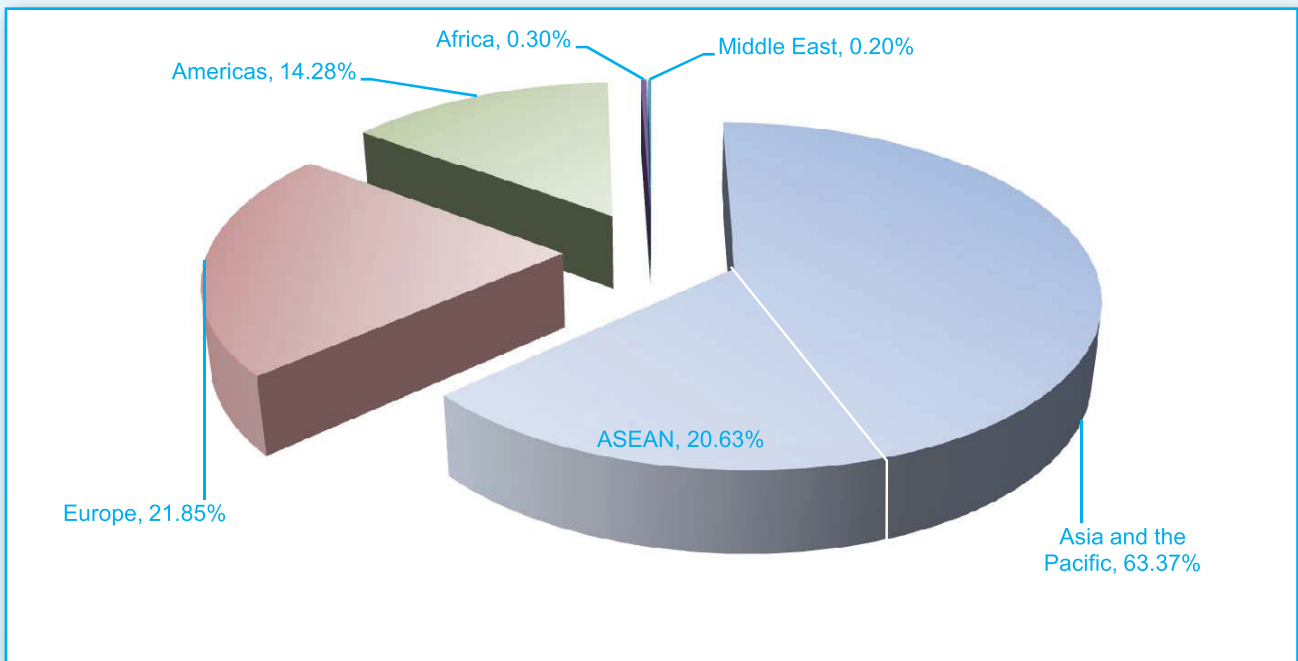
Destinations	Months	2001	2002	2003	2004	2005	2006	2007	2008	2009	change(%) 2009*/08
Phnom Penh	Q1	75,711	84,138	76,818	78,245	103,482	103,203	136,350	164,166	141,496	-13.81%
Cambodia	January	25,419	28,363	26,926	27,767	33,409	35,601	48,383	54,336	50,749	-6.60%
<i>Tourist arrivals by air</i>	February	23,976	25,778	26,594	25,602	35,012	34,274	42,808	54,854	46,128	-15.91%
	March	26,316	29,997	23,298	24,876	35,061	33,328	45,159	54,976	44,619	-18.84%
	Q2	66,667	72,254	44,745	72,908	94,648	92,824	120,202	128,926	112,410	-12.81%
	April	24,721	27,597	15,904	25,955	33,482	33,655	42,153	47,358	39,983	-15.57%
	May	19,690	22,317	12,199	22,986	29,543	28,959	38,780	40,907	35,850	-12.36%
	June	22,256	22,340	16,642	23,967	31,623	30,210	39,269	40,661	36,577	-10.04%
	Q3	63,877	74,835	67,159	74,310	100,750	101,575	124,967	133,508	125,812	-5.76%
	July	27,649	24,713	20,261	27,202	36,742	34,908	44,623	43,793	44,356	1.29%
	August	19,722	27,789	24,934	25,620	34,861	34,841	41,534	45,492	44,264	-2.70%
	September	16,506	22,333	21,964	21,488	29,147	31,826	38,810	44,223	37,192	-15.90%
	Q4	68,434	88,960	80,952	91,285	117,516	129,787	153,743	144,303	148,027	2.58%
	October	23,192	26,151	20,502	24,968	34,416	37,576	44,052	43,122	42,024	-2.55%
	November	22,837	30,346	31,201	30,537	43,164	44,279	53,638	48,824	52,181	6.88%
	December	22,405	32,463	29,249	35,780	39,936	47,932	56,053	52,357	53,822	2.80%
	Total	274,689	320,187	269,674	316,748	416,396	427,389	535,262	570,903	527,745	-7.56%





Tourist arrivals to Phnom Penh International Airport by regions in 2009

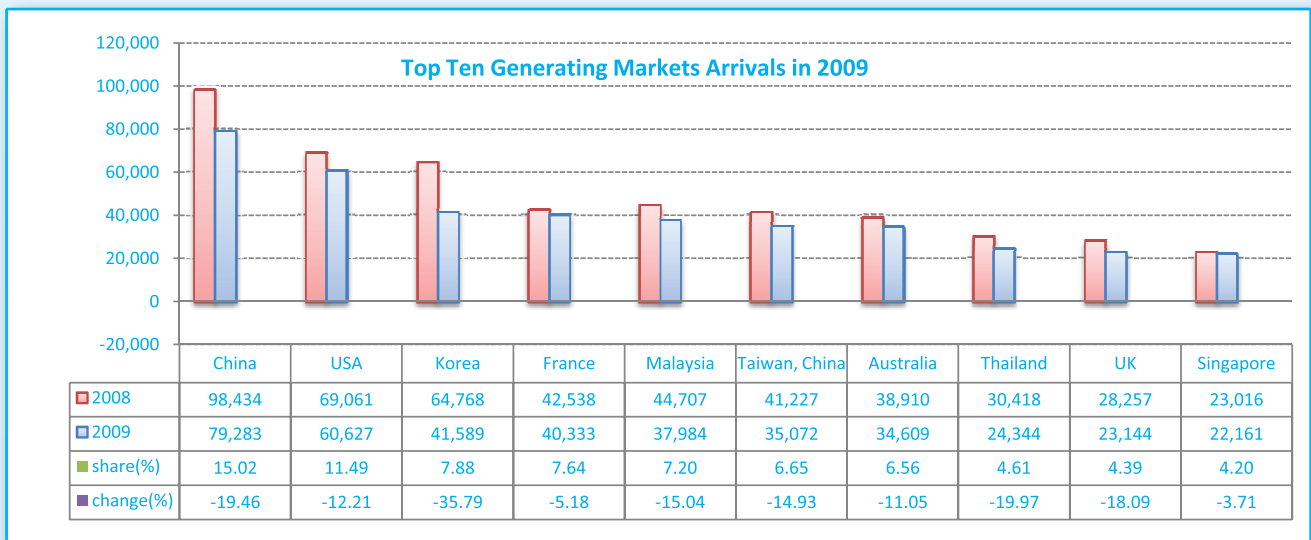
Months	Asia and the Pacific	ASEAN	Europe	Americas	Africa	Middle East	Total
Q1	87,908	25,290	32,926	19,965	379	318	141,496
January	30,668	7,512	12,580	7,284	124	93	50,749
February	28,973	8,297	11,194	5,762	98	101	46,128
March	28,267	9,481	9,152	6,919	157	124	44,619
Q2	72,079	25,382	21,504	18,238	378	211	112,410
April	25,224	7,992	8,159	6,393	150	57	39,983
May	23,559	8,299	6,345	5,739	123	84	35,850
June	23,296	9,091	7,000	6,106	105	70	36,577
Q3	81,700	26,375	27,271	16,233	357	251	125,812
July	27,425	9,026	9,988	6,769	109	65	44,356
August	28,680	8,708	10,333	5,048	127	76	44,264
September	25,595	8,641	6,950	4,416	121	110	37,192
Q4	92,738	31,809	33,610	20,924	495	260	148,027
October	26,348	8,499	8,944	6,508	144	80	42,024
November	31,461	10,421	12,681	7,825	136	78	52,181
December	34,929	12,889	11,985	6,591	215	102	53,822
Total	334,425	108,856	115,311	75,360	1,609	1,040	527,745
share (%)	63.37%	20.63%	21.85%	14.28%	0.30%	0.20%	100.00%





Tourist arrivals to Phnom Penh International Airport by country of residence in 2009

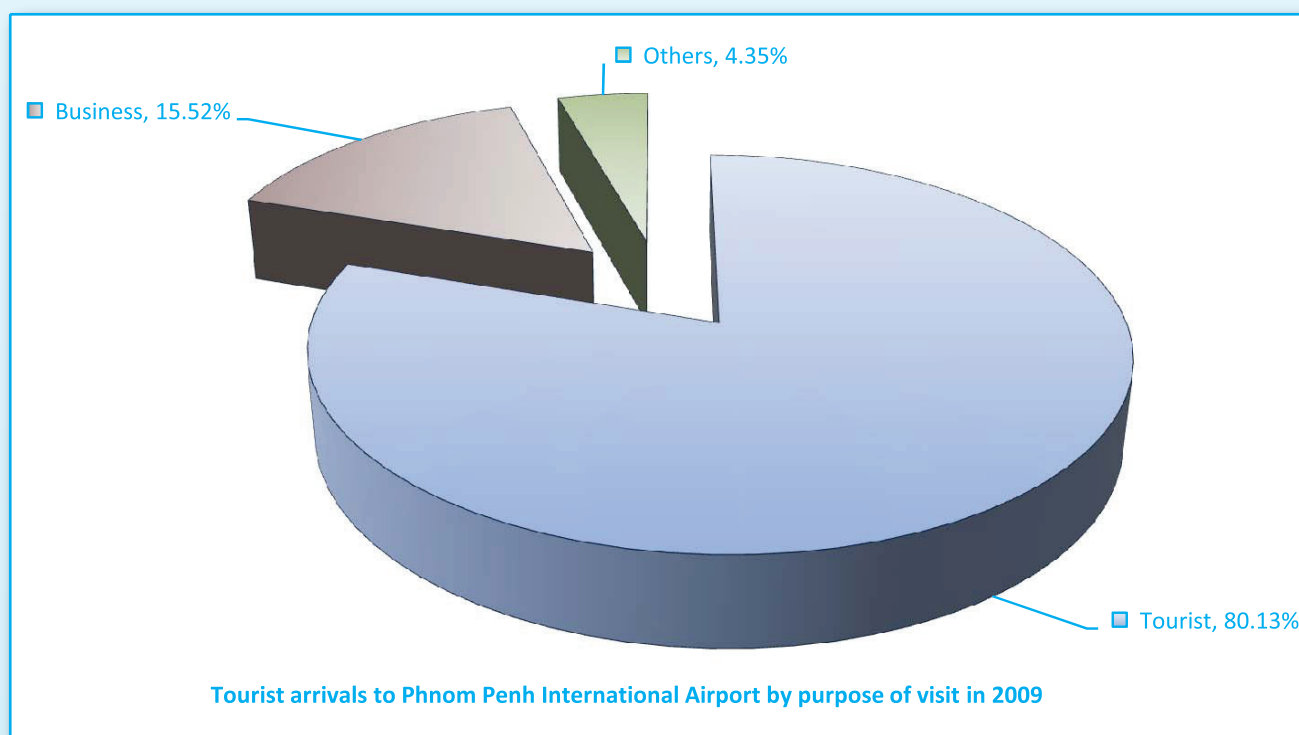
Regions Country of Residence	tourist arrivals												share		
	Jan	Feb	Mar	Apr	May	Jun	Jul	Aug	Sep	Oct	Nov	Dec	Total	females	(%)
GRAND TOTAL	50,749	46,128	44,619	39,983	35,850	36,577	44,356	44,264	37,192	42,024	52,181	53,822	527,745	183,023	100.00%
Americas	7,284	5,762	6,919	6,393	5,739	6,106	6,769	5,048	4,416	6,508	7,825	6,591	75,360	29,144	14.28%
Argentina	16	4	12	12	10	12	19	15	91	6	5	29	231	83	0.04%
Brazil	30	39	48	17	37	12	25	20	31	73	31	45	408	194	0.08%
Canada	1,516	1,171	1,160	1,016	935	829	992	663	700	1,082	1,539	1,194	12,797	4,904	2.42%
Chile	5	11	17	4	33	4	12	6	6	1	9	4	112	50	0.02%
Colombia	8	17	19	12	7	12	14	9	17	13	2	22	152	51	0.03%
Mexico	23	24	20	19	13	17	20	24	16	65	28	21	290	109	0.05%
Peru	4	2	4	11	9	2	13	5	4	4	7	9	74	23	0.01%
United States	5,579	4,450	5,611	5,254	4,661	5,182	5,574	4,257	3,504	5,229	6,103	5,223	60,627	23,499	11.49%
Uruguay			1		1						3		5		0.00%
Others Americas	103	44	27	48	33	36	100	49	47	35	98	44	664	231	0.13%
Africa	124	98	157	150	123	105	109	127	121	144	136	215	1,609	331	0.30%
Cameroon	3	3	2	4	15	10	10	11	11	11	5	16	101	22	0.02%
Ghana	7	7	3	6	4	2	2	7	2	8	4	7	59	5	0.01%
Nigeria	60	58	91	83	55	53	59	65	57	64	51	56	752	56	0.14%
Sudan	4	3	2			2			2	3	2	1	19	2	0.00%
South Africa	45	21	51	51	43	33	33	38	43	52	58	121	589	214	0.11%
Others Africa	5	6	8	6	6	5	5	6	6	6	16	14	89	32	0.02%
Middle East	93	101	124	57	84	70	65	76	110	80	78	102	1,040	199	0.20%
Egypt	3	12	5	2	3		5	7	6	1	9	5	58	13	0.01%
Iran	9	2	2	5	10	1	1	2	5	13	3	6	59	15	0.01%
Israel	72	82	109	42	64	61	54	60	96	55	53	82	830	155	0.16%
Kuwait	3	1	1	2	1	1	2	2		3	1		17	2	0.00%
Palestine													0		0.00%
Saudi Arabia	2	1	3	3	1	4				4	2		20		0.00%
United Arab Emirates													0		0.00%
Others Middle East	4	3	4	3	5	3	3	5	3	4	10	9	56	14	0.01%





Tourist arrivals to Phnom Penh International Airport by purpose of visit in 2001 - 2009

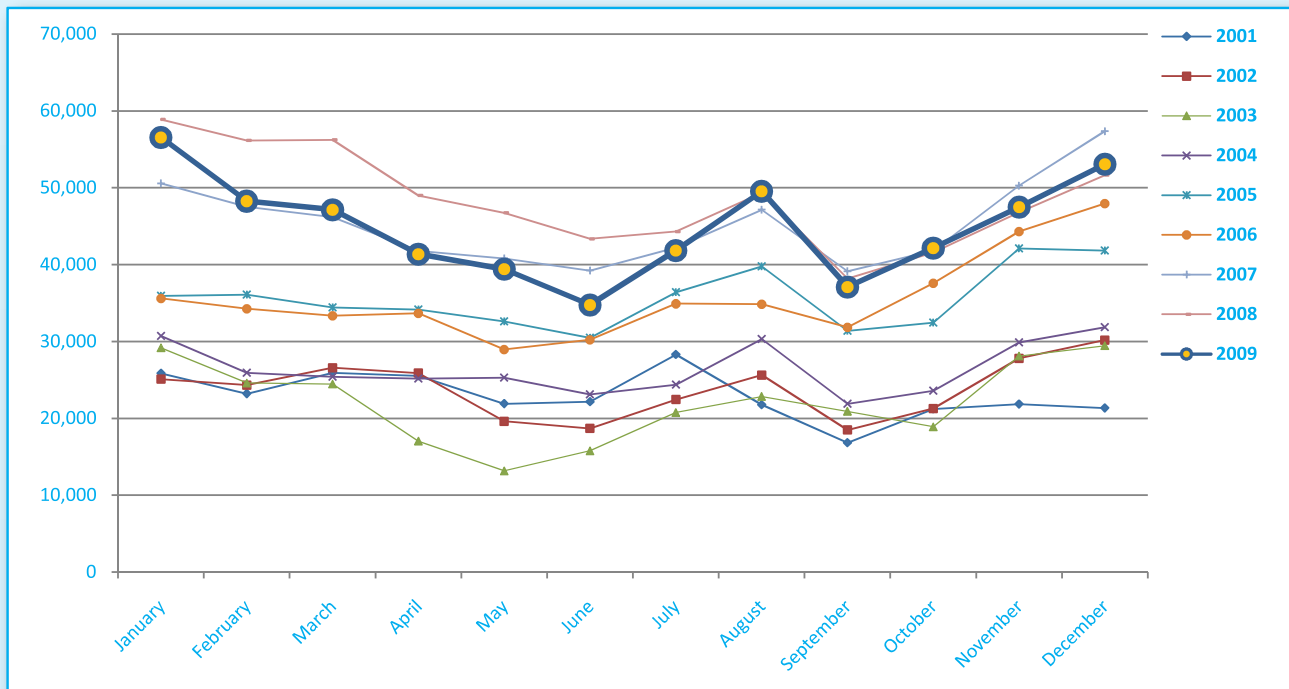
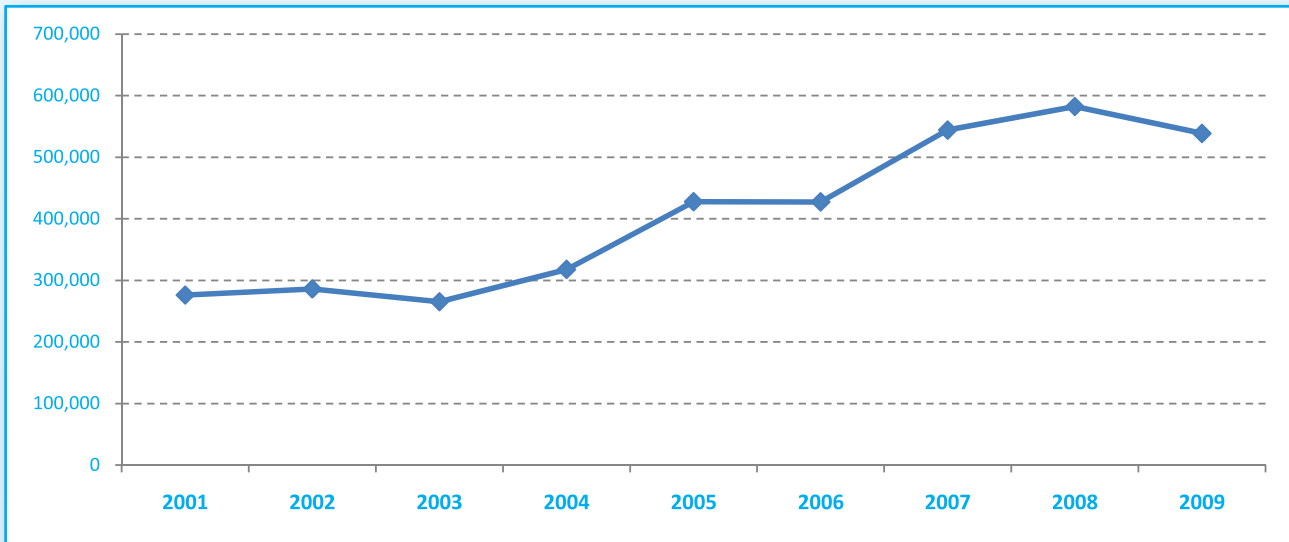
Purpose of visit	tourist arrivals									change (%) 2009*/08
	2001	2002	2003	2004	2005	2006	2007	2008	2009	
Total	274,689	299,195	269,674	316,748	416,396	427,389	535,262	570,903	527,745	-7.56%
Tourist	201,779	194,273	203,555	251,302	322,035	328,137	423,668	459,340	422,896	-7.93%
Business	62,093	68,035	52,725	46,563	61,919	74,940	86,751	90,282	81,881	-9.31%
Others	10,817	36,887	13,394	18,883	32,442	24,312	24,843	21,281	22,968	7.93%
Q1	75,711	78,651	76,818	78,245	103,482	103,203	136,350	164,166	141,496	-13.81%
Tourist	56,765	61,039	58,408	63,119	82,907	78,486	110,226	133,802	115,850	-13.42%
Business	16,537	14,026	16,546	11,082	13,629	18,323	20,045	24,736	20,343	-17.76%
Others	2,409	3,586	1,864	4,044	6,946	6,394	6,079	5,628	5,303	-5.77%
Q2	66,667	65,418	44,745	72,908	94,648	92,824	120,202	128,926	112,410	-12.81%
Tourist	46,419	24,890	30,397	57,436	72,916	68,236	92,732	99,893	86,273	-13.63%
Business	17,640	19,523	10,819	11,070	14,246	18,632	21,205	23,840	20,356	-14.61%
Others	2,608	21,005	3,529	4,402	7,486	5,956	6,265	5,193	5,781	11.32%
Q3	63,877	74,835	67,159	74,310	100,750	101,575	124,967	133,508	125,812	-5.76%
Tourist	46,668	49,667	47,841	58,650	75,690	77,098	96,906	107,264	98,668	-8.01%
Business	14,715	18,392	15,489	11,469	16,106	18,542	21,833	20,909	21,084	0.84%
Others	2,494	6,776	3,829	4,191	8,954	5,935	6,228	5,335	6,060	13.59%
Q4	68,434	80,291	80,952	91,285	117,516	129,787	153,743	144,303	148,027	2.58%
Tourist	51,927	58,677	66,909	72,097	90,522	104,317	123,804	118,381	122,105	3.15%
Business	13,201	16,094	9,871	12,942	17,938	19,443	23,668	20,797	20,098	-3.36%
Others	3,306	5,520	4,172	6,246	9,056	6,027	6,271	5,125	5,824	13.64%





Tourist Outbound Departures from Phnom Penh International Airport by months in 2001 - 2009

Months	Tourists outbound departure									change (%) 2009*/08
	2001	2002	2003	2004	2005	2006	2007	2008	2009	
Q1	75,032	75,986	78,287	82,085	106,462	103,203	144,282	171,257	151,938	-11.28
January	25,870	25,092	29,201	30,731	35,914	35,601	50,577	58,882	56,536	-3.98
February	23,221	24,326	24,605	25,940	36,100	34,274	47,524	56,140	48,257	-14.04
March	25,941	26,568	24,481	25,414	34,448	33,328	46,181	56,235	47,145	-16.16
Q2	69,624	64,202	45,978	73,660	97,210	92,824	121,838	139,102	115,543	-16.94
April	25,558	25,883	17,029	25,201	34,146	33,655	41,775	49,002	41,362	-15.59
May	21,910	19,626	13,166	25,313	32,590	28,959	40,819	46,736	39,416	-15.66
June	22,156	18,693	15,783	23,146	30,474	30,210	39,244	43,364	34,765	-19.83
Q3	66,912	66,580	64,520	76,598	107,571	101,575	128,504	131,832	128,455	-2.56
July	28,312	22,443	20,767	24,381	36,395	34,908	42,213	44,297	41,831	-5.57
August	21,776	25,636	22,851	30,316	39,776	34,841	47,143	49,354	49,540	0.38
September	16,824	18,501	20,902	21,901	31,400	31,826	39,148	38,181	37,084	-2.87
Q4	64,432	79,279	76,474	85,357	116,385	129,787	149,451	140,045	142,702	1.90
October	21,215	21,286	18,913	23,614	32,467	37,576	41,821	41,588	42,152	1.36
November	21,862	27,817	28,101	29,876	42,101	44,279	50,276	46,814	47,484	1.43
December	21,355	30,176	29,460	31,867	41,817	47,932	57,354	51,643	53,066	2.76
Total	276,000	286,047	265,259	317,700	427,628	427,389	544,075	582,236	538,638	-7.49



SECTION II

SIEM REAP INTERNATIONAL AIRPORT



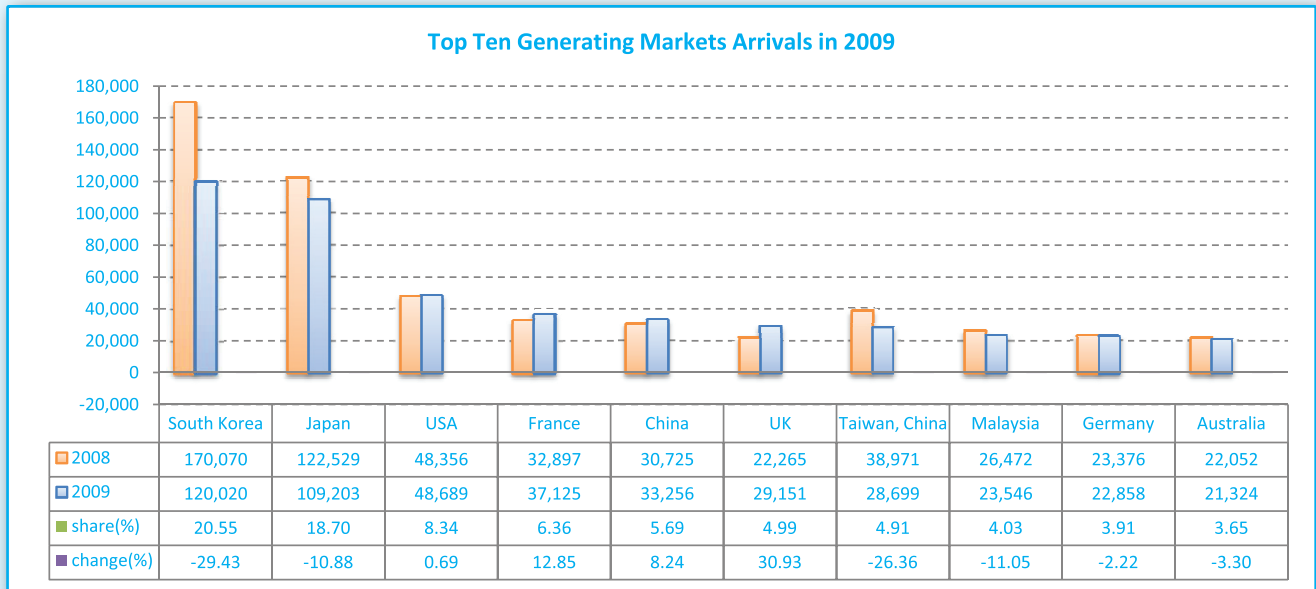
Tourist arrivals to Siem Reap International Airport by country of residence in 2009

Regions Country of Residence	tourist arrivals												share		
	Jan	Feb	Mar	Apr	May	Jun	Jul	Aug	Sep	Oct	Nov	Dec	Total	females	(%)
GRAND TOTAL	70,489	62,994	60,234	46,802	34,735	27,274	38,761	47,121	35,479	43,647	52,545	63,903	583,984	272,287	100.00%
Asia and the Pacific	44,054	38,006	37,050	30,109	23,190	18,476	24,780	31,424	25,935	27,519	30,072	42,794	373,409	185,640	63.94%
ASEAN	4,377	3,850	4,613	3,467	3,271	4,157	3,928	4,107	4,048	4,476	5,630	6,379	52,303	26,684	8.96%
Brunei Darussalam	7	11	5	11	9	0	29	2	4	6	16	10	110	46	0.02%
Indonesia	97	105	106	111	175	83	151	148	178	218	218	172	1,762	865	0.30%
Laos	43	51	31	28	35	58	47	59	26	55	130	64	627	214	0.11%
Malaysia	2,099	1,967	2,492	1,217	1,376	1,745	1,758	1,686	1,859	2,050	2,358	2,939	23,546	11,698	4.03%
Myanmar	35	30	35	32	22	5	32	19	22	20	44	21	317	131	0.05%
Philippines	206	248	187	425	297	187	377	392	289	318	336	400	3,662	2,099	0.63%
Singapore	882	386	995	707	757	1,316	766	891	1,020	847	1,704	2,063	12,334	6,867	2.11%
Thailand	601	583	463	495	347	329	414	401	329	466	375	332	5,135	2,542	0.88%
Vietnam	407	469	299	441	253	434	354	509	321	496	449	378	4,810	2,222	0.82%
Eastern Asia	36,234	32,090	30,455	24,317	18,065	12,758	18,736	25,499	19,336	20,242	21,398	32,664	291,794	144,652	49.97%
China	6,461	2,530	2,279	2,576	1,573	463	1,606	2,877	1,908	3,598	3,157	4,228	33,256	16,381	5.69%
Hong Kong, China	38	53	48	60	28	19	28	32	43	62	50	133	594	339	0.10%
Japan	11,378	12,303	12,236	7,863	5,973	3,613	4,919	8,825	11,534	8,929	10,022	11,608	109,203	54,723	18.70%
Mongolia				1		4	2	2		5	6	2	22	16	0.00%
South Korea	14,992	15,438	13,880	11,578	8,731	7,279	9,941	10,603	3,878	5,388	6,385	11,927	120,020	57,732	20.55%
Taiwan, China	3,365	1,766	2,012	2,239	1,760	1,380	2,240	3,160	1,973	2,260	1,778	4,766	28,699	15,461	4.91%
Southern Asia	371	249	324	297	368	296	236	364	344	375	308	643	4,175	1,815	0.71%
Afghanistan	2	1								4	4		11	3	0.00%
Bangladesh	15	4	5	1	3	3	9	2	13	19	7	5	86	26	0.01%
India	291	226	286	272	343	278	215	323	321	311	274	606	3,746	1,682	0.64%
Nepal	7	5	13	8	11	4	6	11	3	8	10	4	90	29	0.02%
Pakistan	47	6	5	7	8	8	4	8	2	13	3	11	122	30	0.02%
Srilanka	9	7	15	9	3	3	2	20	5	20	10	17	120	45	0.02%
Oceania	2,975	1,637	1,574	1,951	1,409	1,237	1,821	1,425	2,157	2,377	2,377	2,945	23,885	12,043	4.09%
Australia	2,692	1,478	1,427	1,735	1,217	1,066	1,589	1,279	1,924	2,089	2,139	2,689	21,324	10,841	3.65%
New Zealand	283	159	147	216	192	171	232	146	233	288	238	256	2,561	1,202	0.44%
Others Asia & Pacific	97	180	84	77	77	28	59	29	50	49	359	163	1,252	446	0.21%
Europe	17,220	17,094	16,199	12,034	7,863	5,455	9,801	12,485	6,623	10,853	16,246	14,645	146,518	59,360	25.09%
Northern Europe	5,060	5,148	3,862	3,430	2,103	1,859	2,610	2,412	1,954	2,670	3,329	3,819	38,256	14,146	6.55%
Denmark	371	370	214	159	59	56	206	74	34	95	157	201	1,996	929	0.34%
Finland	280	257	133	50	23	34	28	11	8	113	144	178	1,259	655	0.22%
Iceland	1					2							3	1	0.00%
Ireland	183	106	110	91	99	107	204	188	92	148	172	176	1,676	815	0.29%
Norway	167	345	160	107	72	76	150	49	77	103	167	168	1,641	835	0.28%
Sweden	495	476	248	156	45	92	88	41	85	150	284	370	2,530	1,202	0.43%
United Kingdom	3,563	3,594	2,997	2,867	1,805	1,492	1,934	2,049	1,658	2,061	2,405	2,726	29,151	9,709	4.99%
Western Europe	8,913	9,041	9,954	6,834	4,206	2,654	5,382	5,815	2,960	5,823	9,502	7,676	78,760	30,935	13.49%
Austria	447	473	462	259	60	33	160	123	72	138	634	399	3,260	1,554	0.56%
Belgium	324	386	465	408	321	151	373	243	203	432	583	20	3,909	1,831	0.67%
France	4,634	4,525	4,983	3,609	2,100	1,154	2,121	2,579	1,243	2,503	3,722	3,952	37,125	14,474	6.36%
Germany	2,403	2,638	3,074	1,872	1,194	728	1,236	1,506	1,004	1,869	3,181	2,153	22,858	8,565	3.91%
Luxembourg	11	17	14	10	12	26	9	19	4	13	23	21	179	81	0.03%
Netherlands	515	445	433	287	276	144	568	490	178	448	542	544	4,870	2,231	0.83%
Switzerland	579	557	523	389	243	418	915	855	256	420	817	587	6,559	2,199	1.12%
Eastern Europe	1,812	1,221	1,245	752	607	248	330	451	524	865	1,508	1,230	10,793	5,292	1.85%
Bulgaria	26	12	24	13	19	7	5	7	8	9	69	20	219	126	0.04%
Czech	99	119	99	74	38	9	26	57	30	72	136	60	819	352	0.14%
Hungary	188	223	104	57	58	23	27	29	20	63	131	124	1,047	497	0.18%
Poland	197	181	211	137	41	34	57	62	91	121	407	182	1,721	814	0.29%
Romania	44	38	35	18	28	5	8	20	56	38	19	83	392	209	0.07%
Russia	1,112	562	703	374	384	155	162	250	265	521	670	674	5,832	2,953	1.00%
Slovakia	40	28	16	33	6	3	11	8	17	20	48	12	242	91	0.04%
Ukraine	106	58	53	46	33	12	34	18	37	21	28	75	521	250	0.09%
Southern Europe	1,365	1,513	1,062	950	878	672	1,428	3,749	1,156	1,451	1,574	1,784	17,582	8,599	3.01%
Croatia	22	5	5	11	7	3	7	4	4	3	17	11	99	50	0.02%
Greece	83	87	45	35	41	33	27	77	16	32	60	84	620	300	0.11%
Italy	778	683	389	339	170	233	346	1,369	201	282	569	814	6,173	2,840	1.06%
Portugal	68	78	247	160	57	76	68	196	83	82	109	123	1,347	662	0.23%
Slovenia	27	8	21	9	6	3	16	15	31	9	54	20	219	115	0.04%
Spain	355	578	297	379	586	316	947	2,077	799	1,008	698	670	8,710	4,448	1.49%
Turkey	32	74	58	17	11	8	17	11	22	35	67	62	414	184	0.07%
Others Europe	70	171	76	68	69	22	51	58	29	44	333	136	1,127	388	0.19%



Tourist arrivals to Siem Reap International Airport by country of residence in 2009

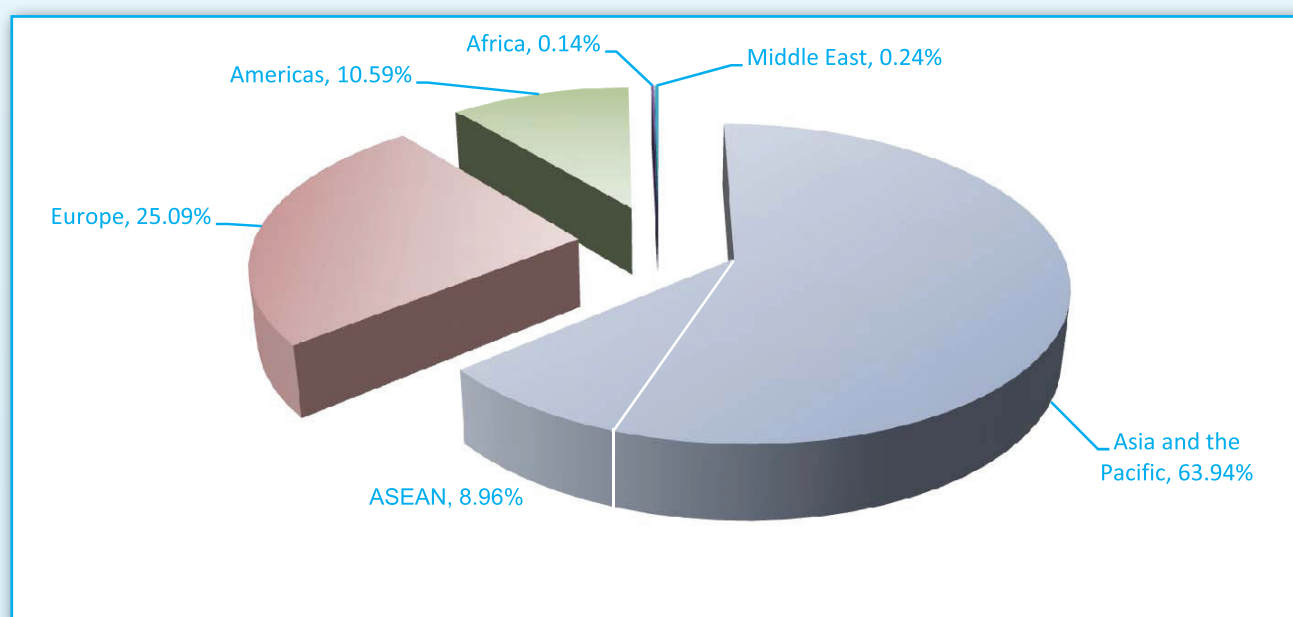
Regions Country of Residence	tourist arrivals												share		
	Jan	Feb	Mar	Apr	May	Jun	Jul	Aug	Sep	Oct	Nov	Dec	Total	females	(%)
GRAND TOTAL	70,489	62,994	60,234	46,802	34,735	27,274	38,761	47,121	35,479	43,647	52,545	63,903	583,984	272,287	100.00%
Americas	8,997	7,554	6,781	4,518	3,598	3,282	4,040	3,099	2,803	5,032	6,040	6,106	61,850	26,287	10.59%
Argentina	77	64	71	84	46	25	15	23	32	43	85	82	647	314	0.11%
Brazil	181	111	57	84	89	38	38	33	39	117	97	120	1,004	508	0.17%
Canada	1,152	901	872	589	466	370	528	374	366	608	950	43	7,219	3,696	1.24%
Chile	169	80	68	43	48	34	39	15	20	68	73	60	717	356	0.12%
Colombia	30	14	29	17	31	30	94	43	22	95	34	43	482	266	0.08%
Mexico	109	115	147	192	110	90	187	80	130	212	240	295	1,907	979	0.33%
Peru	13	11	7	11	15	17	12	11	13	34	16	16	176	93	0.03%
United States	7,216	6,146	5,474	3,474	2,620	2,648	3,088	2,472	2,155	3,817	4,205	5,374	48,689	19,766	8.34%
Uruguay	5	6	6	2	147	17	3	7	5	8	13		219	116	0.04%
Others Americas	45	106	50	22	26	13	36	41	21	30	327	73	790	193	0.14%
Africa	62	36	81	51	59	38	87	38	51	88	63	152	806	363	0.14%
Cameroon				1	5		1	3	3				13	2	0.00%
Ghana		3		1		3	1						8	2	0.00%
Nigeria	1	5	3	8	12	4	8	2	6	6	5	1	61	14	0.01%
Sudan		1		1	2				1		2	2	9	3	0.00%
South Africa	55	20	74	39	35	29	74	30	38	68	53	119	634	312	0.11%
Others Africa	6	7	4	1	5	2	3	3	3	14	3	30	81	30	0.01%
Middle East	156	304	123	90	25	23	53	75	67	155	124	206	1,401	637	0.24%
Egypt		21	10	6	1	1		3	1	3	7	2	55	23	0.01%
Iran	2	3	5	1	8	9	11	1	5	3	2	3	53	21	0.01%
Israel	148	275	105	80	11	11	40	69	57	136	113	173	1,218	571	0.21%
Kuwait				1	1				2	2	1		7	2	0.00%
Palestine													0		0.00%
Saudi Arabia	2			1	1	1						4	9	4	0.00%
United Arab Emirates													0		0.00%
Others Middle East	4	5	3	1	3	1	2	2	2	11	1	24	59	16	0.01%





Tourist arrivals to Siem Reap International Airport by regions in 2009

Months	Asia and the Pacific	ASEAN	Europe	Americas	Africa	Middle East	Total
Q1	119,110	12,840	50,513	23,332	179	583	193,717
January	44,054	4,377	17,220	8,997	62	156	70,489
February	38,006	3,850	17,094	7,554	36	304	62,994
March	37,050	4,613	16,199	6,781	81	123	60,234
Q2	71,775	10,895	25,352	11,398	148	138	108,811
April	30,109	3,467	12,034	4,518	51	90	46,802
May	23,190	3,271	7,863	3,598	59	25	34,735
June	18,476	4,157	5,455	3,282	38	23	27,274
Q3	82,139	12,083	28,909	9,942	176	195	121,361
July	24,780	3,928	9,801	4,040	87	53	38,761
August	31,424	4,107	12,485	3,099	38	75	47,121
September	25,935	4,048	6,623	2,803	51	67	35,479
Q4	100,385	16,485	41,744	17,178	303	485	160,095
October	27,519	4,476	10,853	5,032	88	155	43,647
November	30,072	5,630	16,246	6,040	63	124	52,545
December	42,794	6,379	14,645	6,106	152	206	63,903
Total	373,409	52,303	146,518	61,850	806	1,401	583,984
share (%)	63.94%	8.96%	25.09%	10.59%	0.14%	0.24%	100.00%

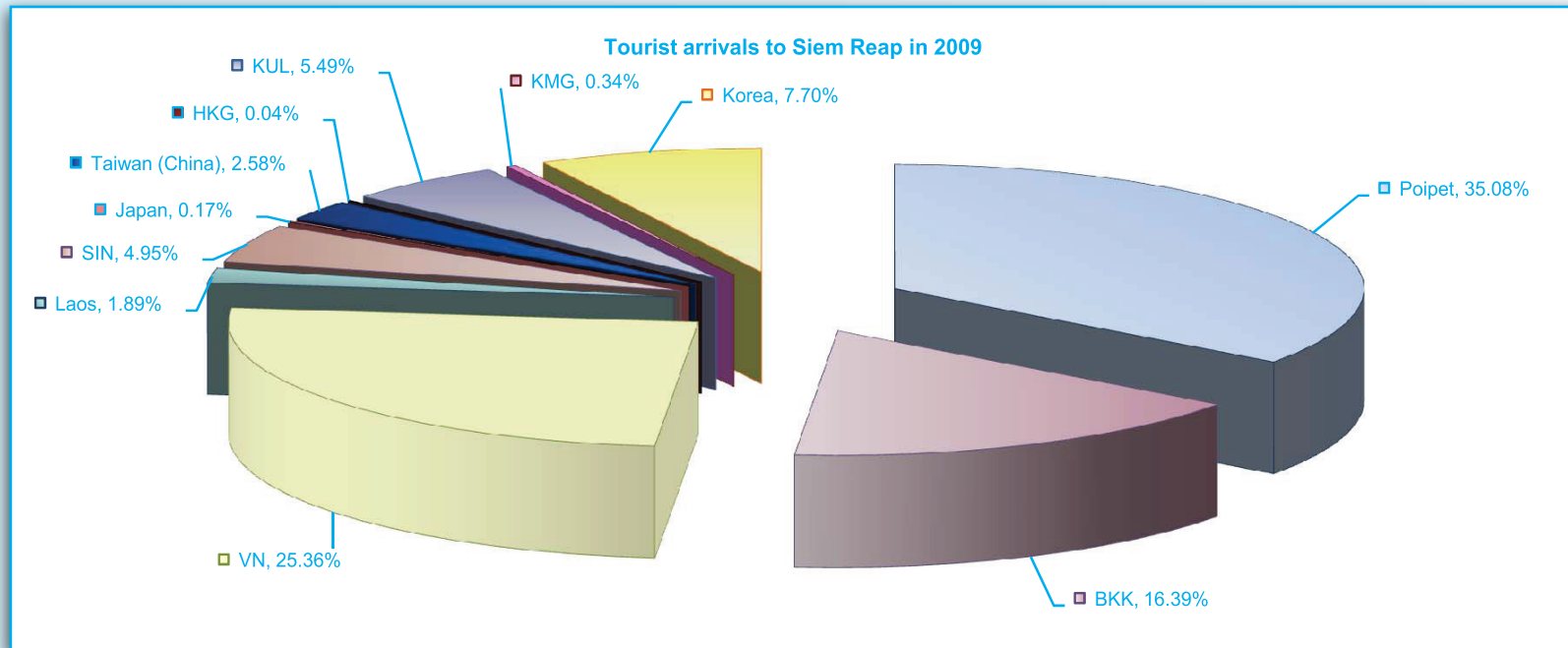




Section II, Siem Reap International Airport

Tourist arrivals to Siem Reap by mode of transport in 2008 - 2009

Months	2008												2009												change (%)
	Direct flight												Direct flight												
	Poipet	BKK	VN	Laos	SIN	Japan	Taiwan (China)	HKG	KUL	KMG	Korea	Total	Poipet	BKK	VN	Laos	SIN	Japan	Taiwan (China)	HKG	KUL	KMG	Korea	Total	
Jan	24,003	18,708	29,156	2,171	4,159	1,994	5,588	1,052	3,311	1,177	14,559	105,878	26,435	19,552	26,788	2,236	3,883	656	2,997	248	4,327	779	9,023	96,924	-8.46%
Feb	24,070	17,117	27,165	3,358	4,086	3,404	6,231	1,317	3,018	2,412	12,774	104,952	25,639	18,804	24,101	1,923	3,665	118	2,040	75	3,864		8,404	88,633	-15.55%
Mar	21,236	14,151	31,350	2,970	4,676	2,157	5,285	1,054	3,498	1,039	8,920	96,336	29,747	16,009	25,793	1,805	4,053		1,815		4,145	797	5,817	89,981	-6.60%
Apr	18,526	9,012	23,237	1,682	3,328	0	4,581	755	2,558	915	7,879	72,473	28,905	10,896	20,829	1,056	3,653		1,412		2,962	712	5,282	75,707	4.46%
May	19,260	7,356	18,908	1,271	4,814	0	1,739	879	3,173	321	6,696	64,417	24,031	8,292	13,491	827	3,164		1,318		3,116	185	4,342	58,766	-8.77%
Jun	17,242	6,688	14,886	1,040	3,386	0	168	617	2,789	0	4,421	51,237	24,259	7,372	7,277	937	3,200		938		3,092		4,458	51,533	0.58%
Jul	18,292	9,463	16,864	1,392	3,312	0	7	502	3,402	0	4,507	57,741	27,405	10,560	12,554	973	3,259		1,588		4,191		5,636	66,166	14.59%
Aug	18,809	10,122	23,211	2,053	3,557	0	0	297	3,450	0	5,002	66,501	27,587	12,437	18,042	1,041	3,512		1,380		4,563		6,146	74,708	12.34%
Sep	17,424	7,106	20,495	877	3,428	0	0	0	3,432	136	3,067	55,965	25,393	9,295	12,676	483	3,551	230	1,027		3,988	419	3,810	60,872	8.77%
Oct	17,673	8,739	26,962	1,310	3,737	0	486	0	4,029	748	4,042	67,726	25,689	10,552	18,337	941	4,148		1,823		4,128	211	3,507	69,336	2.38%
Nov	22,914	11,976	29,170	2,407	4,607	0	1,134	0	4,612	0	5,061	81,881	24,062	11,043	22,345	2,634	2,909		3,199		5,159		5,256	76,607	-6.44%
Dec	24,671	16,315	27,001	1,814	5,207	0	591	0	5,592	740	5,586	87,517	26,381	12,659	25,863	2,181	5,539	567	3,677		5,827		7,590	90,284	3.16%
Total	244,120	136,753	288,405	22,345	48,297	7,555	25,810	6,473	42,864	7,488	82,514	912,624	315,533	147,471	228,096	17,037	44,536	1,571	23,214	323	49,362	3,103	69,271	899,517	-1.44%





Tourist arrivals to Siem Reap International Airport in 2008 - 2009

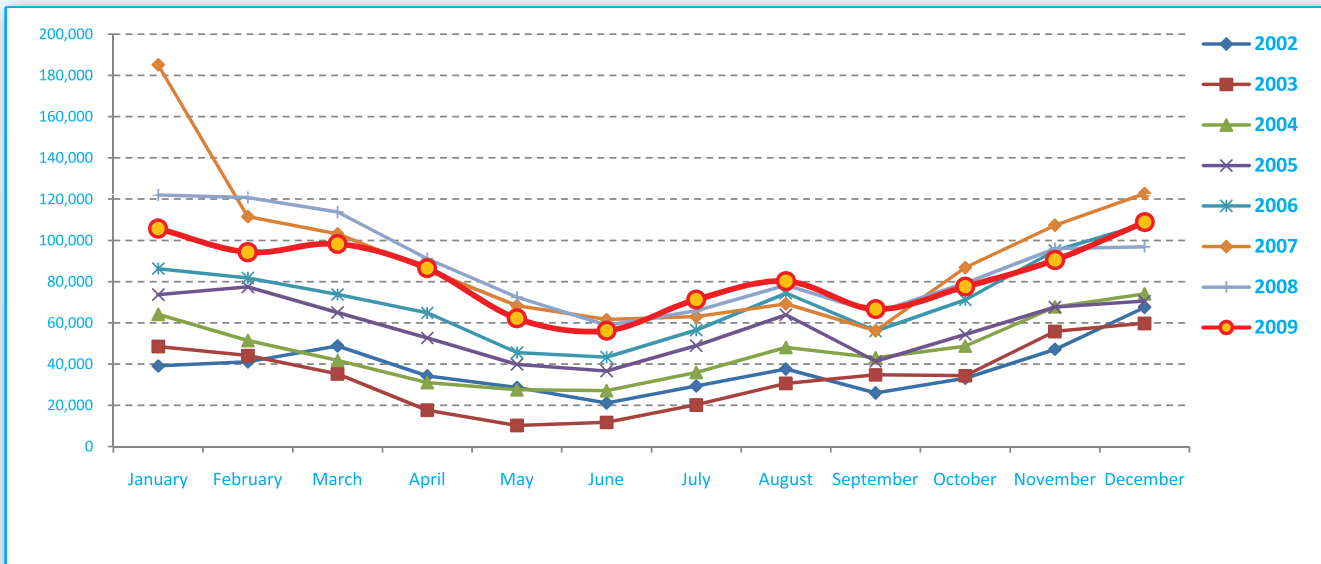
Months	BKK - REP			VN - REP			SIN - REP			VTE - REP			JAP - REP		
	2008	2009	change (%) 09*/08	2008	2009	change (%) 09*/08	2008	2009	change (%) 09*/08	2008	2009	change (%) 09*/08	2008	2009	change (%) 09*/08
Q1	49,976	54,365	8.78	87,671	76,682	-12.53	12,921	11,601	-10.22	8,499	5,964	-29.83	7,555	774	-89.76
January	18,708	19,552	4.51	29,156	26,788	-8.12	4,159	3,883	-6.64	2,171	2,236	2.99	1,994	656	-67.10
February	17,117	18,804	9.86	27,165	24,101	-11.28	4,086	3,665	-10.30	3,358	1,923	-42.73	3,404	118	-96.53
March	14,151	16,009	13.13	31,350	25,793	-17.73	4,676	4,053	-13.32	2,970	1,805	-39.23	2,157		
Q2	23,056	26,560	15.20	57,031	41,597	-27.06	11,528	10,017	-13.11	3,993	2,820	-29.38	0	0	-
April	9,012	10,896	20.91	23,237	20,829	-10.36	3,328	3,653	9.77	1,682	1,056	-37.22			
May	7,356	8,292	12.72	18,908	13,491	-28.65	4,814	3,164	-34.28	1,271	827	-34.93			
June	6,688	7,372	10.23	14,886	7,277	-51.12	3,386	3,200	-5.49	1,040	937	-9.90			
Q3	26,691	32,292	20.98	60,570	43,272	-28.56	10,297	10,322	0.24	4,322	2,497	-42.23	0	230	-
July	9,463	10,560	11.59	16,864	12,554	-25.56	3,312	3,259	-1.60	1,392	973	-30.10			
August	10,122	12,437	22.87	23,211	18,042	-22.27	3,557	3,512	-1.27	2,053	1,041	-49.29			
September	7,106	9,295	30.80	20,495	12,676	-38.15	3,428	3,551	3.59	877	483	-44.93		230	
Q4	37,030	34,254	-7.50	83,133	66,545	-19.95	13,551	12,596	-7.05	5,531	5,756	4.07	0	567	-
October	8,739	10,552	20.75	26,962	18,337	-31.99	3,737	4,148	11.00	1,310	941	-28.17			
November	11,976	11,043	-7.79	29,170	22,345	-23.40	4,607	2,909	-36.86	2,407	2,634	9.43			
December	16,315	12,659	-22.41	27,001	25,863	-4.21	5,207	5,539	6.38	1,814	2,181	20.23		567	
Total	136,753	147,471	7.84	288,405	228,096	-20.91	48,297	44,536	-7.79	22,345	17,037	-23.75	7,555	1,571	-79.21

Months	China - REP			HKG - REP			KUL - REP			KMG - REP			Korea - REP		
	2008	2009	change (%) 09*/08	2008	2009	change (%) 09*/08	2008	2009	change (%) 09*/08	2008	2009	change (%) 09*/08	2008	2009	change (%) 09*/08
Q1	17,104	6,852	-59.94	3,423	323	-90.56	9,827	12,336	25.53	4,628	1,576	-65.95	36,253	23,244	-35.88
January	5,588	2,997	-46.37	1,052	248	-76.43	3,311	4,327	30.69	1,177	779	-33.81	14,559	9,023	-38.02
February	6,231	2,040	-67.26	1,317	75	-94.31	3,018	3,864	28.03	2,412			12,774	8,404	-34.21
March	5,285	1,815	-65.66	1,054			3,498	4,145	18.50	1,039	797	-23.29	8,920	5,817	-34.79
Q2	6,488	3,668	-43.46	2,251	0	-	8,520	9,170	7.63	1,236	897	-27.43	18,996	14,082	-25.87
April	4,581	1,412	-69.18	755			2,558	2,962	15.79	915	712	-22.19	7,879	5,282	-32.96
May	1,739	1,318	-24.21	879			3,173	3,116	-1.80	321	185	-42.37	6,696	4,342	-35.16
June	168	938	458.33	617			2,789	3,092	10.86				4,421	4,458	0.84
Q3	7	3,995	56,971.43	799	0	-	10,284	12,742	23.90	136	419	208.09	12,576	15,592	23.98
July	7	1,588	22,585.71	502			3,402	4,191	23.19				4,507	5,636	25.05
August		1,380		297			3,450	4,563	32.26				5,002	6,146	22.87
September		1,027					3,432	3,988	16.20	136	419	208.09	3,067	3,810	24.23
Q4	2,211	8,699	293.44	0	0	-	14,233	15,114	6.19	1,488	211	-85.82	14,689	16,353	11.33
October	486	1,823	275.10				4,029	4,128	2.46	748	211	-71.79	4,042	3,507	-13.24
November	1,134	3,199	182.10				4,612	5,159	11.86				5,061	5,256	3.85
December	591	3,677	522.17				5,592	5,827	4.20	740			5,586	7,590	35.88
Total	25,810	23,214	-10.06	6,473	323	-95.01	42,864	49,362	15.16	7,488	3,103	-58.56	82,514	69,271	-16.05



Tourist arrivals to Siem Reap province by months in 2002 - 2009

Destinations	Months	2002	2003	2004	2005	2006	2007	2008	2009	change(%) 2009*/08
Siem Reap	Q1	128,832	127,838	157,388	216,151	241,785	399,812	356,390	298,164	-16.34%
Cambodia	January	39,022	48,507	64,174	73,702	86,279	185,163	121,975	105,701	-13.34%
<i>Tourist arrivals by all means of transportation</i>	February	41,019	44,092	51,416	77,466	81,787	111,459	120,657	94,241	-21.89%
	March	48,791	35,239	41,798	64,983	73,719	103,190	113,758	98,222	-13.66%
	Q2	83,858	39,489	85,759	129,154	153,575	215,634	222,404	204,864	-7.89%
	April	34,237	17,635	31,062	52,651	64,765	85,769	91,105	86,465	-5.09%
	May	28,565	10,173	27,590	39,860	45,516	68,292	72,447	62,175	-14.18%
	June	21,056	11,681	27,107	36,643	43,294	61,573	58,852	56,224	-4.47%
	Q3	92,857	85,497	127,233	154,099	186,740	188,342	209,005	218,202	4.40%
	July	29,364	20,172	35,979	48,913	56,421	62,976	65,896	71,282	8.17%
	August	37,508	30,594	48,130	63,853	74,365	69,196	78,254	80,220	2.51%
	September	25,985	34,731	43,124	41,333	55,954	56,170	64,855	66,700	2.84%
	Q4	147,601	149,956	190,567	192,600	274,057	316,798	272,071	276,854	1.76%
	October	33,020	34,350	48,720	54,344	71,086	86,833	79,200	77,553	-2.08%
	November	47,121	55,845	67,722	67,704	95,058	107,330	95,984	90,472	-5.74%
	December	67,460	59,761	74,125	70,552	107,913	122,635	96,887	108,829	12.33%
	Total	453,148	402,780	560,947	692,004	856,157	1,120,586	1,059,870	998,084	-5.83%



Tourist arrivals to Siem Reap international airport by purpose of visit in 2002 - 2009

Purpose of visit	tourist arrivals								change (%) 2009*/08
	2002	2003	2004	2005	2006	2007	2008	2009	
Total	202,791	186,298	309,373	440,125	599,675	761,251	668,504	583,984	-12.64%
Tourist	195,776	178,638	297,279	426,807	591,474	751,537	656,776	574,571	-12.52%
Business	2,670	2,848	2,746	2,821	2,778	5,699	7,063	4,720	-33.17%
Others	4,345	4,812	9,348	10,497	5,423	4,015	4,665	4,693	0.60%
Q1	54,679	69,007	79,693	128,925	172,188	237,244	237,857	193,717	-18.56%
Tourist	52,068	66,208	76,489	124,476	169,285	235,542	234,498	191,123	-18.50%
Business	624	684	407	661	612	940	2,036	1,533	-24.71%
Others	1,987	2,115	2,797	3,788	2,291	762	1,323	1,061	-19.80%
Q2	29,629	22,682	49,897	75,133	109,623	155,423	133,099	108,811	-18.25%
Tourist	28,546	21,493	47,142	72,383	108,051	153,170	130,453	106,707	-18.20%
Business	598	646	873	730	740	1,495	1,741	1,079	-38.02%
Others	485	543	1,882	2,020	832	758	905	1,025	13.26%
Q3	39,672	30,604	69,564	102,083	122,627	153,556	125,682	121,361	-3.44%
Tourist	37,787	28,434	66,452	99,429	120,921	150,950	123,302	119,398	-3.17%
Business	796	846	906	607	758	1,691	1,526	978	-35.91%
Others	1,089	1,324	2,206	2,047	948	915	854	985	15.34%
Q4	78,811	64,005	110,219	133,984	195,237	215,028	171,866	160,095	-6.85%
Tourist	77,375	62,503	107,196	130,519	193,217	211,875	168,523	157,343	-6.63%
Business	652	672	560	823	668	1,573	1,760	1,130	-35.80%
Others	784	830	2,463	2,642	1,352	1,580	1,583	1,622	2.46%

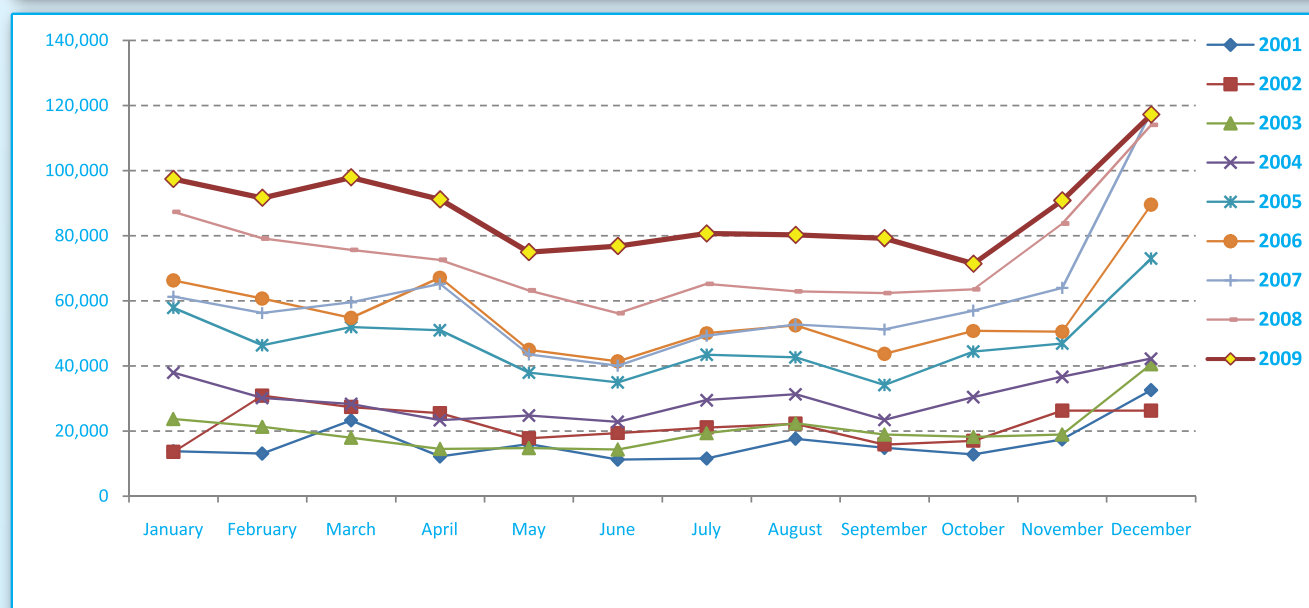
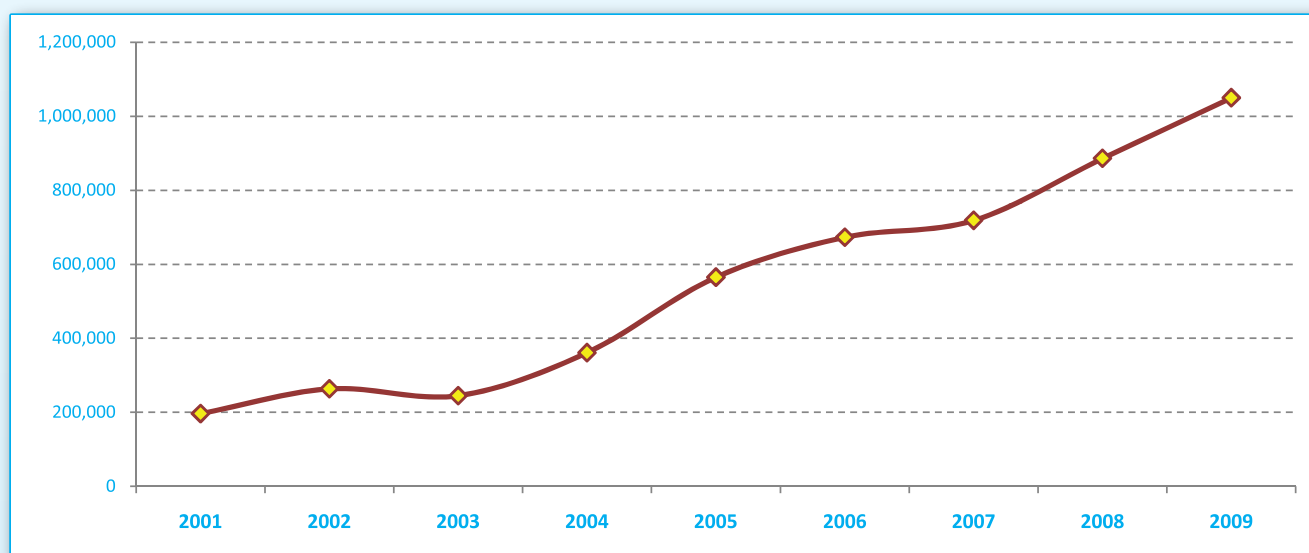
SECTION III

INTERNATIONAL BORDER CHECK POINTS



Visitor arrivals to Cambodia by land boat in 2001 - 2009

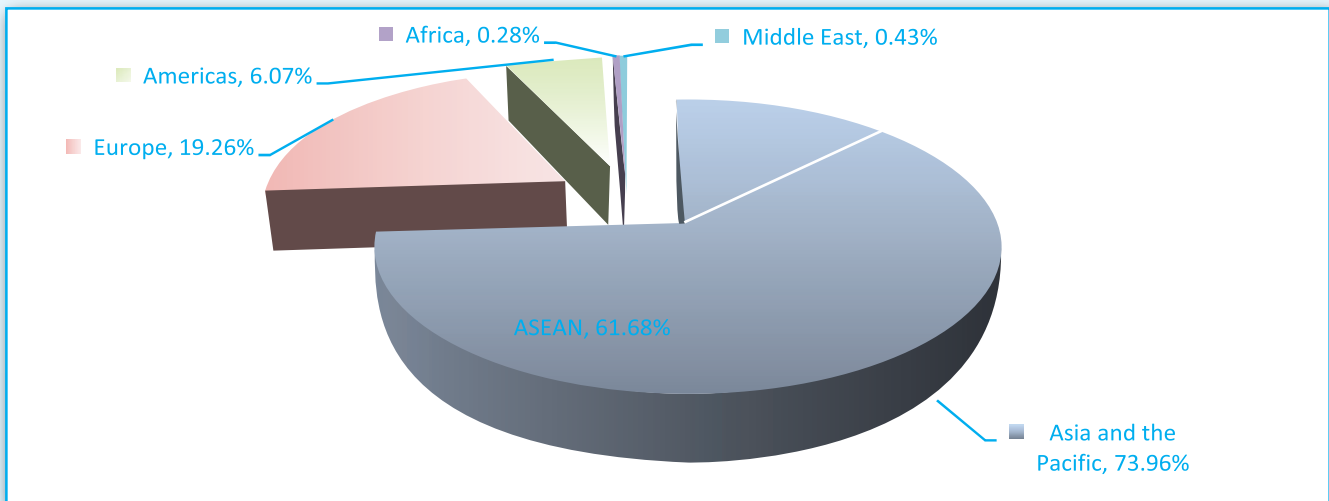
Destinations	Months	2001	2002	2003	2004	2005	2006	2007	2008	2009	change(%) 2009*/08
Cambodia	Q1	50,207	71,897	63,007	96,499	156,263	181,914	177,219	242,182	287,075	18.54%
<i>Visitor arrivals by land & boat</i>	January	13,802	13,607	23,717	37,969	57,895	66,335	61,309	87,370	97,453	11.54%
	February	13,098	30,889	21,318	30,188	46,414	60,758	56,296	79,166	91,667	15.79%
	March	23,307	27,401	17,972	28,342	51,954	54,821	59,614	75,646	97,955	29.49%
	Q2	39,426	62,752	43,633	70,997	123,980	153,640	148,911	192,006	243,009	26.56%
	April	12,214	25,528	14,514	23,345	51,007	67,183	65,234	72,598	91,170	25.58%
	May	15,983	17,817	14,779	24,812	37,973	45,007	43,567	63,211	74,979	18.62%
	June	11,229	19,407	14,340	22,840	35,000	41,450	40,110	56,197	76,860	36.77%
	Q3	44,057	59,313	60,655	84,257	120,384	146,418	153,292	190,503	240,249	26.11%
	July	11,575	21,135	19,350	29,521	43,496	50,092	49,312	65,207	80,700	23.76%
	August	17,657	22,266	22,376	31,316	42,679	52,546	52,732	62,914	80,283	27.61%
	September	14,825	15,912	18,929	23,420	34,209	43,780	51,248	62,382	79,266	27.07%
	Q4	62,852	69,584	77,747	109,485	164,467	191,005	239,193	261,367	279,515	6.94%
	October	12,812	17,018	18,204	30,476	44,475	50,798	57,039	63,543	71,434	12.42%
	November	17,437	26,297	18,963	36,709	46,946	50,587	64,016	83,758	90,844	8.46%
	December	32,603	26,269	40,580	42,300	73,046	89,620	118,138	114,066	117,237	2.78%
	Total	196,542	263,546	245,042	361,238	565,094	672,977	718,615	886,058	1,049,848	18.49%





Visitor arrivals to Cambodia by international border check points by regions in 2009

Months	Asia and the Pacific	ASEAN	Europe	Americas	Africa	Middle East	Total
Q1	193,498	161,932	69,155	22,159	812	1,451	287,075
January	65,316	52,657	24,034	7,254	261	588	97,453
February	61,622	52,073	22,445	6,976	240	384	91,667
March	66,560	57,202	22,676	7,929	311	479	97,955
Q2	192,841	164,655	34,989	13,695	750	734	243,009
April	71,224	61,073	14,279	5,066	280	321	91,170
May	58,394	50,861	11,191	4,889	276	229	74,979
June	63,223	52,721	9,519	3,740	194	184	76,860
Q3	185,094	146,764	41,802	11,488	754	1,111	240,249
July	58,704	47,613	16,006	5,319	228	443	80,700
August	60,613	51,050	15,565	3,498	261	346	80,283
September	65,777	48,101	10,231	2,671	265	322	79,266
Q4	205,048	174,151	56,211	16,400	672	1,184	279,515
October	56,536	49,060	11,098	3,336	205	259	71,434
November	61,207	51,685	22,834	6,223	194	386	90,844
December	87,305	73,406	22,279	6,841	273	539	117,237
Total	776,481	647,502	202,157	63,742	2,988	4,480	1,049,848
share (%)	73.96%	61.68%	19.26%	6.07%	0.28%	0.43%	100.00%



Visitor arrivals to international border check points by purpose of visit in 2002 - 2009

Purpose of visit	Visitor arrivals								change (%) 2009*/08
	2002	2003	2004	2005	2006	2007	2008	2009	
Total	263,546	245,042	361,238	565,094	672,977	718,615	886,058	1,049,848	18.49%
Tourist	244,060	226,423	337,065	460,355	635,196	657,332	816,218	994,433	21.83%
Business	16,062	15,348	18,546	22,409	31,584	53,324	61,431	46,179	-24.83%
Others	3,424	3,271	5,627	82,330	6,197	7,959	8,409	9,236	9.83%
Q1	71,897	63,007	96,499	156,263	181,914	177,219	242,182	287,075	18.54%
Tourist	67,204	59,107	91,074	123,851	174,201	165,879	225,121	273,078	21.30%
Business	3,924	3,163	4,320	4,790	6,451	9,596	14,938	11,834	-20.78%
Others	769	737	1,105	27,622	1,262	1,744	2,123	2,163	1.88%
Q2	62,752	43,633	70,997	123,980	153,640	148,911	192,006	243,009	26.56%
Tourist	57,316	39,097	65,756	96,612	144,742	134,657	173,996	228,833	31.52%
Business	4,094	3,500	3,904	5,254	7,320	12,108	15,769	11,697	-25.82%
Others	1,342	1,036	1,337	22,114	1,578	2,146	2,241	2,479	10.62%
Q3	59,313	60,655	84,257	120,384	146,418	153,292	190,503	240,249	26.11%
Tourist	54,572	55,789	78,045	113,759	136,244	136,951	173,112	227,026	31.14%
Business	4,021	4,045	4,791	5,479	8,453	14,632	15,498	11,073	-28.55%
Others	720	821	1,421	1,146	1,721	1,709	1,893	2,150	13.58%
Q4	69,584	77,747	109,485	164,467	191,005	239,193	261,367	279,515	6.94%
Tourist	64,968	72,430	102,190	126,133	180,009	219,845	243,989	265,496	8.81%
Business	4,023	4,640	5,531	6,886	9,360	16,988	15,226	11,575	-23.98%
Others	593	677	1,764	31,448	1,636	2,360	2,152	2,444	13.57%



Visitor arrivals to Cambodia by international border check points by country of residence in 2009

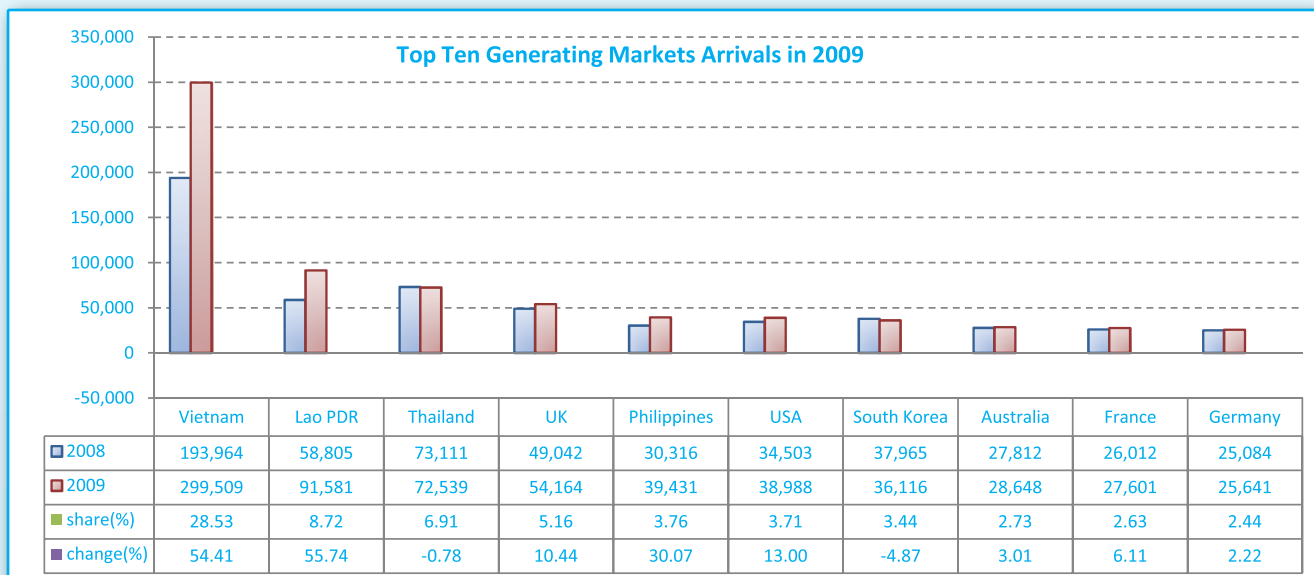
Regions Country of Residence	visitor arrivals													share	
	Jan	Feb	Mar	Apr	May	Jun	Jul	Aug	Sep	Oct	Nov	Dec	Total	females	(%)
GRAND TOTAL	97,453	91,667	97,955	91,170	74,979	76,860	80,700	80,283	79,266	71,434	90,844	117,237	1,049,848	450,866	100.00%
Asia and the Pacific	53,706	49,609	56,516	55,663	49,145	55,958	54,323	56,598	62,052	51,928	49,959	65,182	660,639	292,414	62.93%
ASEAN	41,047	40,060	47,158	45,512	41,612	45,456	43,232	47,035	44,376	44,452	40,437	51,283	531,660	248,618	50.64%
Brunei Darussalam	2	2	1		3			5	3	1	2	19	38	15	0.00%
Indonesia	560	232	311	357	313	276	273	379	372	322	809	516	4,720	1,537	0.45%
Laos	7,285	7,668	9,346	6,518	9,795	11,043	8,595	8,361	7,754	5,353	4,113	5,750	91,581	61,005	8.72%
Malaysia	990	1,099	1,225	972	979	1,121	1,058	1,257	1,452	1,316	1,875	2,885	16,229	3,633	1.55%
Myanmar	74	37	69	121	73	37	95	62	82	67	48	70	835	355	0.08%
Philippines	3,481	3,644	3,865	3,657	3,591	2,817	3,178	2,634	3,161	3,007	3,452	2,944	39,431	24,101	3.76%
Singapore	424	688	503	475	628	504	446	458	429	449	698	1,076	6,778	947	0.65%
Thailand	6,463	5,836	5,827	6,606	5,338	5,598	6,683	5,581	5,752	7,891	4,401	6,563	72,539	24,002	6.91%
Vietnam	21,768	20,854	26,011	26,806	20,892	24,060	22,904	28,298	25,371	26,046	25,039	31,460	299,509	133,023	28.53%
Eastern Asia	6,763	6,465	5,980	5,873	4,530	7,573	5,151	7,246	12,857	4,949	6,052	8,952	82,391	22,936	7.85%
China	1,616	1,200	1,101	1,551	965	768	1,020	2,019	1,563	1,429	1,707	1,583	16,522	5,753	1.57%
Hong Kong, China	155	164	156	175	152	120	147	235	271	332	285	300	2,492	902	0.24%
Japan	1,291	1,803	1,772	1,193	1,055	936	962	2,025	1,813	1,022	1,309	3,633	18,814	3,949	1.79%
Mongolia	8	1	1	52	6	1	6	6	7	5		6	99	34	0.01%
South Korea	3,265	2,928	2,525	2,312	1,930	1,986	2,600	2,526	8,805	1,812	2,456	2,971	36,116	9,882	3.44%
Taiwan, China	428	369	425	590	422	3,762	416	435	398	349	295	459	8,348	2,416	0.80%
Southern Asia	390	309	362	286	270	266	261	292	262	303	287	370	3,658	707	0.35%
Afghanistan			71										71	42	0.01%
Bangladesh	27	6	17	9	16	18	11	7	11	20	10	20	172	14	0.02%
India	300	259	224	245	210	202	222	237	211	252	208	293	2,863	523	0.27%
Nepal	34	24	14	6	17	32	5	18	20	14	23	29	236	79	0.02%
Pakistan	24	14	29	23	17	6	9	15	12	9	15	20	193	28	0.02%
Sri Lanka	5	6	7	3	10	8	14	15	8	8	31	8	123	21	0.01%
Oceania	4,776	2,659	2,784	2,009	1,790	1,757	3,865	1,765	3,326	2,167	3,065	3,810	33,773	14,308	3.22%
Australia	4,108	2,329	2,448	1,626	1,494	1,342	3,423	1,392	2,853	1,784	2,587	3,262	28,648	11,914	2.73%
New Zealand	668	330	336	383	296	415	442	373	473	383	478	548	5,125	2,394	0.49%
Others Asia & Pacific	730	116	232	1,983	943	906	1,814	260	1,231	57	118	767	9,157	5,845	0.87%
Europe	24,034	22,445	22,676	14,279	11,191	9,519	16,006	15,565	10,231	11,098	22,834	22,279	202,157	78,539	19.26%
Northern Europe	9,762	9,572	10,139	5,388	4,886	4,501	6,286	4,948	3,788	4,240	8,652	79,582	27,562	7.58%	
Denmark	775	731	573	318	238	196	373	189	166	215	327	362	4,463	1,724	0.43%
Finland	821	630	396	177	171	136	172	109	123	184	285	426	3,630	1,081	0.35%
Iceland	24	34	27	11	9	8	9	10	4	15	10	14	175	57	0.02%
Ireland	505	442	504	306	320	341	629	489	312	378	498	332	5,056	2,048	0.48%
Norway	658	667	465	251	178	158	259	133	133	137	301	383	3,723	1,378	0.35%
Sweden	1,649	1,507	1,137	560	297	298	272	210	195	283	887	1,076	8,371	3,143	0.80%
United Kingdom	5,330	5,561	7,037	3,765	3,673	3,364	4,572	3,808	2,855	3,028	5,112	6,059	54,164	18,131	5.16%
Western Europe	9,695	9,268	9,114	5,217	3,964	3,153	6,268	6,862	3,813	4,413	10,778	8,801	81,346	32,448	7.75%
Austria	471	471	354	234	114	112	214	245	117	130	1,724	331	4,517	1,762	0.43%
Belgium	532	558	424	257	258	199	568	342	264	272	683	983	5,340	1,921	0.51%
France	2,628	2,646	2,917	2,100	1,539	1,231	2,733	3,115	1,218	1,462	3,214	2,798	27,601	11,289	2.63%
Germany	3,664	3,551	3,629	1,560	1,098	814	1,039	1,453	1,383	1,483	3,103	2,864	25,641	10,189	2.44%
Luxembourg	18	10	15	6	8	5	11	11	11	6	8	15	124	42	0.01%
Netherlands	1,470	1,260	1,155	649	669	516	1,268	1,356	581	741	1,301	1,115	12,081	5,007	1.15%
Switzerland	912	772	620	411	278	276	435	340	239	319	745	695	6,042	2,238	0.58%
Eastern Europe	2,506	2,086	1,939	1,179	913	566	743	952	891	1,496	2,908	2,927	19,106	9,327	1.82%
Bulgaria	4	3	10	10	6	1	6	6	39	7	10	12	114	55	0.01%
Czech	181	172	139	65	39	44	37	76	57	114	197	231	1,352	591	0.13%
Hungary	147	93	101	49	172	19	30	30	18	37	80	89	865	349	0.08%
Poland	412	541	288	151	77	98	149	214	180	372	707	345	3,534	1,792	0.34%
Romania	25	16	15	3	8	6	3	13	11	33	24	35	192	173	0.02%
Russia	1,589	1,099	1,197	789	526	366	467	549	437	742	1,668	2,078	11,507	5,644	1.10%
Slovakia	39	65	98	66	19	8	13	13	9	18	91	25	464	217	0.04%
Ukraine	109	97	91	46	66	24	38	51	140	173	131	112	1,078	506	0.10%
Southern Europe	1,333	1,443	1,288	577	506	396	907	2,575	884	908	1,601	1,206	13,624	4,980	1.30%
Croatia	19	8	19	9	1	9	6	1	5	15	12	25	129	69	0.01%
Greece	68	63	28	25	13	11	18	53	29	16	28	40	392	343	0.04%
Italy	807	891	824	243	231	150	331	1,014	287	322	733	622	6,455	1,753	0.61%
Portugal	44	42	71	43	33	22	37	164	29	44	62	56	647	289	0.06%
Slovenia	49	55	32	16	6	7	27	31	22	34	37	26	342	238	0.03%
Spain	262	287	253	208	201	164	431	1,285	455	428	652	338	4,964	2,078	0.47%
Turkey	84	97	61	33	21	33	57	27	57	49	77	99	695	210	0.07%
Others Europe	738	76	196	1,918	922	903	1,802	228	855	41	127	693	8,499	4,222	0.81%



Section III, International Border Check Points

Visitor arrivals to Cambodia international border check points by country of residence in 2009

Regions Country of Residence	visitor arrivals												Total	females	share (%)
	Jan	Feb	Mar	Apr	May	Jun	Jul	Aug	Sep	Oct	Nov	Dec			
GRAND TOTAL	97,453	91,667	97,955	91,170	74,979	76,860	80,700	80,283	79,266	71,434	90,844	117,237	1,049,848	450,866	100.00%
Americas	7,254	6,976	7,929	5,066	4,889	3,740	5,319	3,498	2,671	3,336	6,223	6,841	63,742	27,027	6.07%
Argentina	91	94	136	51	55	53	49	44	28	87	76	75	839	354	0.08%
Brazil	78	70	114	52	65	54	45	59	59	46	81	69	792	389	0.08%
Canada	1,902	2,228	2,316	1,088	974	807	1,050	753	454	714	1,680	2,358	16,324	7,322	1.55%
Chile	112	200	127	62	144	63	70	70	74	53	62	77	1,114	520	0.11%
Colombia	27	30	12	21	30	21	44	27	19	10	43	24	308	154	0.03%
Mexico	40	88	57	13	39	56	41	31	39	21	33	67	525	281	0.05%
Peru	16	13	17	8	10	17	12	12	14	9	23	21	172	75	0.02%
United States	4,180	4,131	5,037	2,697	2,698	2,599	3,328	2,439	1,836	2,347	4,160	3,536	38,988	15,338	3.71%
Uruguay	38	7	3	1	31			2	1	2		4	89	37	0.01%
Others Americas	770	115	110	1,073	843	70	680	61	147	47	65	610	4,591	2,557	0.44%
Africa	261	240	311	280	276	194	228	261	265	205	194	273	2,988	722	0.28%
Cameroon	83	74	98	96	92	79	84	90	79	72	44	46	937	87	0.09%
Ghana	38	50	45	64	51	37	50	69	46	42	33	32	557	31	0.05%
Nigeria	26	19	20	39	19	19	27	25	26	15	27	25	287	8	0.03%
Sudan			1	1								1	4	1	0.00%
South Africa	98	90	73	58	98	55	64	64	28	71	76	106	881	426	0.08%
Others Africa	16	7	74	22	16	4	3	13	86	4	14	63	322	169	0.03%
Middle East	588	384	479	321	229	184	443	346	322	259	386	539	4,480	1,422	0.43%
Egypt	8	4	5	7	1	4	8	5	2	7	8	1	60	3	0.01%
Iran	26	17	11	22	16	7	22	22	28	21	13	21	226	15	0.02%
Israel	502	317	376	246	182	145	221	201	237	194	319	451	3,391	1,294	0.32%
Kuwait	40	37	34	25	16	24	187	112	32	34	34	34	609	9	0.06%
Palestine															
Saudi Arabia		2	4	1	4	2	2	1			2	1	19	2	0.00%
United Arab Emirates													0		
Others Middle East	12	7	49	20	10	2	3	5	23	3	10	31	175	99	0.02%
Same-day visitors	11,610	12,013	10,044	15,561	9,249	7,265	4,381	4,015	3,725	4,608	11,248	22,123	115,842	50,742	11.03%



UNIT II

DOMESTIC TOURIST



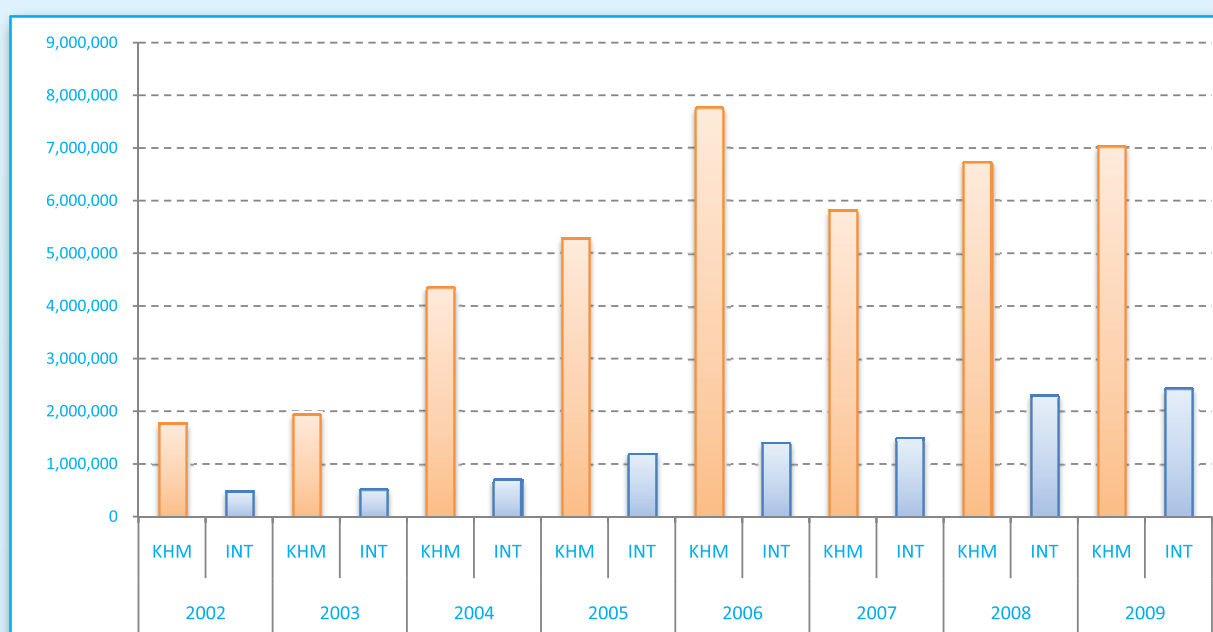
Internal Tourism Statistics Report in 2008 - 2009

No.	Destinations	2008			2009			change (%)	
		KHM	INT	Total	KHM	INT	Total	*2009/08	
							KHM	INT	
I	1 Phnom Penh	1,785,442	849,642	2,635,084	1,973,370	1,006,450	2,979,820	10.5%	18.5%
II	1 Siem Reap	1,195,264	1,059,870	2,255,134	1,279,356	998,084	2,277,440	7.0%	-5.8%
III	Costal Area (4K)	859,637	155,342	1,014,979	812,738	154,504	967,242	-5.5%	-0.5%
	1 Kampong Som	396,850	135,568	532,418	395,174	126,665	521,839	-0.4%	-6.6%
	2 Kampot	270,274	8,772	279,046	189,846	11,566	201,412	-29.8%	31.9%
	3 Kep	155,751	2,346	158,097	175,509	7,180	182,689	12.7%	206.1%
	4 Koh Kong	36,762	8,656	45,418	52,209	9,093	61,302	42.0%	5.0%
IV	Northeast (Eco-tourism)	273,584	46,593	320,177	308,284	42,520	350,804	12.7%	-8.7%
	1 Kratie	113,019	12,861	125,880	100,677	12,325	113,002	-10.9%	-4.2%
	2 Mondul Kiri	19,014	2,406	21,420	26,107	3,251	29,358	37.3%	35.1%
	3 Rattanak Kiri	85,057	19,518	104,575	97,595	16,821	114,416	14.7%	-13.8%
	4 Stung Treng	56,494	11,808	68,302	83,905	10,123	94,028	48.5%	-14.3%
V	Others	2,615,422	197,770	2,813,192	2,647,761	217,156	2,864,917	1.2%	9.8%
	1 Banteay Meanchey	97,566	15,027	112,593	106,969	16,215	123,184	9.6%	7.9%
	2 Battanbang	245,137	28,433	273,570	223,290	26,870	250,160	-8.9%	-5.5%
	3 Kampong Cham	222,070	12,504	234,574	237,348	13,901	251,249	6.9%	11.2%
	4 Kampong Chhnang	8,655	2,332	10,987	8,148	2,763	10,911	-5.9%	18.5%
	5 Kampong Speu	320,848	15,738	336,586	151,558	14,078	165,636	-52.8%	-10.5%
	6 Kampong Thom	159,132	4,498	163,630	61,425	4,627	66,052	-61.4%	2.9%
	7 Kandal	1,151,258	9,426	1,160,684	1,287,980	9,549	1,297,529	11.9%	1.3%
	8 Oddar Meanchey	97,566	15,027	112,593	68,860	13,458	82,318	-29.4%	-10.4%
	9 Pailin	107,848	14,548	122,396	98,973	82,510	181,483	-8.2%	467.2%
	10 Preah Vihear	65,182	62,258	127,440	40,525	8,452	48,977	-37.8%	-86.4%
	11 Prey Veng	21,494	762	22,256	72,093	583	72,676	235.4%	-23.5%
	12 Pursat	93,682	1,270	94,952	257,105	1,809	258,914	174.4%	42.4%
	13 Svay Reang	10,331	219	10,550	12,623	520	13,143	22.2%	137.4%
	14 Takeo	14,653	15,728	30,381	20,864	21,821	42,685	42.4%	38.7%
	TOTAL	6,729,349	2,309,217	9,038,566	7,021,509	2,418,714	9,440,223	4.3%	4.7%

Note:

KHM: Cambodian visitors

INT: International visitors





Unit II, Domestic Tourist

Cambodian arrivals to Siem Reap province by mode of transports in 2008 - 2009

Months	2008						2009						change (%) 2009*/08
	from Phnom Penh			Battambang	Piopet	Total	from Phnom Penh			Battambang	Piopet	Total	
	air	boat	land	by boat	by land		air	boat	land	by boat	by land		
Q1	2,168	308	223,572	303	10,028	236,379	0	181	229,750	693	77,074	307,698	30.17
January	701	88	73,122	78	2,901	76,890		68	75,786	73	27,710	103,637	34.79
February	737	122	74,903	116	3,512	79,390			75,242		26,102	101,344	27.65
March	730	98	75,547	109	3,615	80,099		113	78,722	620	23,262	102,717	28.24
Q2	1,875	0	263,520	120	122,502	388,017	45	0	200,611	43	183,870	384,569	-0.89
April	788	0	114,975	86	98,601	214,450			79,511	7	138,889	218,407	1.85
May	527	0	74,820	12	2,101	77,460			56,112	14	24,741	80,867	4.40
June	560	0	73,725	22	21,800	96,107	45		64,988	22	20,240	85,295	-11.25
Q3	1,427	121	229,223	180	57,493	288,444	78	0	189,599	57	64,749	254,483	-11.77
July	440	18	70,496	33	20,194	91,181	52		68,697	35	25,492	94,276	3.39
August	560	88	67,779	73	17,417	85,917	26		50,742	22	24,052	74,842	-12.89
September	427	15	90,948	74	19,882	111,346			70,160		15,205	85,365	-23.33
Q4	1,298	260	222,263	331	58,272	282,424	0	0	261,726	0	70,880	332,606	17.77
October	580	57	76,827	60	16,791	94,315			71,004		26,277	97,281	3.14
November	710	82	73,657	150	17,747	92,346			77,340		21,686	99,026	7.23
December	8	121	71,779	121	23,734	95,763			113,382		22,917	136,299	42.33
Total	6,768	689	938,578	934	248,295	1,195,264	123	181	881,686	793	396,573	1,279,356	7.04

International visitors arrivals to Siem Reap province by mode of transports in 2008 - 2009

Months	2008					2009					change (%) 2009*/08
	from Phnom Penh			Battambang	Total	from Phnom Penh			Battambang	Total	
	air	boat	land	by boat		air	boat	land	by boat		
Q1	24,665	7,364	14,608	2,587	49,224	7,060	4,287	9,456	1,823	22,626	-54.03
January	7,932	2,753	4,428	984	16,097	963	2,063	4,854	897	8,777	-45.47
February	7,994	2,633	4,307	771	15,705	4,768		840		5,608	-64.29
March	8,739	1,978	5,873	832	17,422	1,329	2,224	3,762	926	8,241	-52.70
Q2	20,332	0	13,591	354	34,277	3,297	0	14,624	937	18,858	-44.98
April	12,274		6,216	142	18,632	1,140		9,359	259	10,758	-42.26
May	4,452		3,510	68	8,030	1,091		2,034	284	3,409	-57.55
June	3,606		3,865	144	7,615	1,066		3,231	394	4,691	-38.40
Q3	14,579	1,954	11,067	1,198	28,798	5,501	1,722	7,501	1,732	16,456	-42.86
July	3,979	350	3,574	252	8,155	1,240		3,231	645	5,116	-37.27
August	6,147	1,504	3,641	461	11,753	2,487	1,159	1,185	681	5,512	-53.10
September	4,453	100	3,852	485	8,890	1,774	563	3,085	406	5,828	-34.44
Q4	14,292	3,907	14,677	2,071	34,947	17,770	3,599	17,159	2,099	40,627	16.25
October	5,325	1,195	4,263	691	11,474	3,654	786	3,156	621	8,217	-28.39
November	7,620	904	4,823	756	14,103	6,892	1,036	5,377	560	13,865	-1.69
December	1,347	1,808	5,591	624	9,370	7,224	1,777	8,626	918	18,545	97.92
Total	73,868	13,225	53,943	6,210	147,246	33,628	9,608	48,740	6,591	98,567	-33.06

UNIT III

TOURIST SERVICES



Section I: Accommodations

1. Number of Hotels and Guesthouse from 1997 - 2009

Years	Hotels				Guesthouse			
	number	change (%)	room	change (%)	number	change (%)	room	change (%)
1997	179	0	6,989	0	60	0	477	0
1998	216	20.67	8,247	18.00	147	145.00	1,510	216.56
1999	221	2.31	9,115	10.53	186	26.53	1,897	25.63
2000	240	8.60	9,673	6.12	292	56.99	3,233	70.43
2001	247	2.92	10,804	11.69	370	26.71	3,899	20.60
2002	267	8.10	11,426	5.76	509	37.57	6,109	56.68
2003	292	9.36	13,201	15.53	549	7.86	6,497	6.35
2004	299	2.40	14,271	8.11	615	12.02	7,684	18.27
2005	317	6.02	15,465	8.37	684	11.22	9,000	17.13
2006	351	10.73	17,914	15.84	742	8.48	9,166	1.84
2007	395	12.54	20,470	14.27	891	20.08	11,563	26.15
2008	398	0.76	20,678	1.02	925	3.82	12,180	5.34
2009	451	13.32	23,010	11.28	1,018	10.05	14,512	19.15

2. Distribution of hotels and guesthouses by cities and provinces in 2009

No.	Regions	Hotels				Guesthouse	
		number	room			number	room
			single	twin	Total		
I	Phnom Penh	159	2,963	3,957	6,920	353	5,351
II	Siem Reap	118	2,500	6,435	8,935	225	2,929
III	Costal Area	59	581	1,575	2,156	171	2,468
	Kampong Som (Sihanoukville)	44	454	1,308	1,762	112	1,618
	Kampot	2	18	40	58	29	358
	Kep	6		122	122	11	150
	Koh Kong	7	109	105	214	19	342
IV	Northeast (Eco-tourism)	22	235	546	781	61	749
	Kratie	7	41	228	269	22	245
	Mondul Kiri	2		87	87	18	258
	Rattanak Kiri	8	144	107	251	11	86
	Stung Treng	5	50	124	174	10	160
V	Others	93	1,570	2,648	4,218	208	3,015
	Banteay Meanchey	13	388	129	517	28	525
	Battanbang	24	315	781	1,096	18	385
	Kampong Cham	5	45	163	208	30	248
	Kampong Chhnang	5	35	87	122	7	99
	Kampong Speu					11	88
	Kampong Thom	5	166		166	11	217
	Kandal					26	174
	Oddar Meanchey	4	62	153	215	11	176
	Pailin	3	147	183	330	10	235
	Preah Vihear	10	47	71	118	11	147
	Prey Veng	8	6	149	155	2	20
	Pursat	4	34	122	156	16	192
	Svay Reang	12	325	810	1,135	14	273
	Takeo					13	236
	Total	451	7,849	15,161	23,010	1,018	14,512



Section II: Travel Agencies and Tour Operators

1. Number of travel agencies and tour operators from 1996 - 2009

Years	Offices			change (%)
	head	branch	Total	
1996	81	35	116	0
1997	78	37	115	-0.86%
1998	103	34	137	19.13%
1999	117	43	160	16.79%
2000	140	64	204	27.50%
2001	166	70	236	15.69%
2002	186	73	259	9.75%
2003	186	84	270	4.25%
2004	208	94	302	11.85%
2005	237	99	336	11.26%
2006	277	105	382	13.69%
2007	333	118	451	18.06%
2008	354	119	473	4.88%
2009	372	113	485	2.54%

2. Number of travel agencies and tour operators from 2003 - 2009

Regions	2003			2004			2005			2006			2007			2008			2009				
	HO	BO	Total	HO	BO	Total	HO	BO	Total	HO	BO	Total	HO	BO	Total	HO	BO	Total	HO	BO	Total		
Phnom Penh	140	10	150	145	11	156	154	14	168	179	20	199	210	22	232	223	26	249	233	25	258		
Siem Reap	35	68	103	52	72	124	72	73	145	85	78	163	103	89	192	114	86	200	124	81	205		
Kampong Som	2	1	3	1	1	2	1	1	2	1	1	2	4	1	5	3	1	4	3	1	4		
Banteay Meanchey	7	2	9	8	4	12	8	7	15	8	3	11	9	3	12	9	3	12	9	3	12		
Svay Reang	1		1	1		1	1		1	1		1	1		1	1		1	1		1		
Oddar Meanchey	1		1	1		1	1		1	1		1	1		1	1		1	1		1		
Koh Kong		1	1		1	1		1	1		1	1		1	1		1	1		1	1		
Battambang		2	2		4	4		3	3		2	2		1	2	3		1	2	3	1	2	3
Kandal											1	1		1	1		1	1					
Stung Treng											1	1											
Kampot																	1	1					
Takeo																	1	1					
Other													3	3									
Total	186	84	270	208	93	301	237	99	336	277	105	382	330	118	448	354	119	473	372	113	485		

HO: Head Office; BO: Branch Office

Section III: Tour Guides

1. Trained Tour Guides

No.	Languages	2006				2007				2008			
		Phnom Penh		Siem Reap		Phnom Penh		Siem Reap		Phnom Penh		Siem Reap	
		Total	Females	Total	Females	Total	Females	Total	Females	Total	Females	Total	Females
1	English	365	98	659	54	365	98	984	66	45	7	401	23
2	Japanese	99	25	554	133	99	25	653	164	7	0	95	19
3	French	112	44	173	30	112	44	203	38	13	2	39	5
4	Chinese	79	1	191	45	79	1	220	49	44	7	138	17
5	Korean	2	1	56	3	2	1	88	6	5	1	33	1
6	Thai	21	13	225	31	21	13	254	33	2	0	40	5
7	German	35	8	44	2	35	8	76	7	9	3	24	2
8	Spanish	19		57	4	19	0	80	3	6	0	28	2
9	Italian			10		0	0	21	1	1	0	2	0
10	Russian	2		9		2	0	30	4	8	2	10	0
11	Vietnam					0	0	7	1	13	2	11	1
Total		734	190	1,978	302	734	190	2,616	372	153	24	821	75

2. Licensed Tour Guides

No.	Languages	2007				2008				2009			
		Phnom Penh		Siem Reap		Phnom Penh		Siem Reap		Phnom Penh		Siem Reap	
		Total	Females	Total	Females	Total	Females	Total	Females	Total	Females	Total	Females
1	English	105	29	750	43	129	33	795	45	133	33	1,081	59
2	Japanese	43	13	562	124	46	13	583	134	46	13	651	147
3	French	43	17	161	24	46	18	165	25	52	19	191	30
4	Chinese	39	0	176	33	48	0	179	34	60	3	297	46
5	Korean	1	0	74	4	2	0	77	5	2	0	101	5
6	Thai	7	4	209	22	9	4	211	22	9	4	234	26
7	German	19	6	68	5	23	6	71	5	26	7	87	7
8	Spanish	9	1	72	3	10	1	76	4	12	1	100	5
9	Italian	0	0	20	1	1	0	20	1	1	0	22	1
10	Russian	0	0	27	4	4	1	29	4	6	1	38	4
11	Vietnam	0	0	6	1	4	1	6	1	5	1	16	2
Total		266	70	2,119	263	322	77	2,212	280	352	82	2,818	332



Section IV: Transportations

1. Airports

No.	Airports	Airport Code	Distance from Phnom Penh (Km)
International Airports			
1	Phnom Penh	PNH	-
2	Siem Reap	REP	237
Domestic Airports			
3	Battambang	BBM	246
4	Ratanak Kiri	RBE	332
5	Stung Treng	TNX	250
6	Mondul Kiri	MWV	279
7	Koh Kong	KKZ	202
8	Kang Keng (Sihanouk Ville)	KOS	170

2. National road network (NR)

National Road	Distance (Km)	Route
NR 1	167	Phnom Penh - Kandal - Prey Veng - Svay Reang - Vietnam border (Bavet - Mocbai)
NR 2	135	Phnom Penh - Kandal - Takeo - Vietnam border (Phnom Den - Tin Bieng)
NR 3	202	Phnom Penh - Kampot - Veal Rinh - P.Ream
NR 4	230	Phnom Penh - Kandal - Kam Speu - Sihanoukville (International Sea Port)
NR 5	411	Phnom Penh - Kandal - Kampong Chhnang - Pursat - Battambang - Banteay Meanchey (Sisophon) - Thai border (Poipet - Ban Klong Luek)
NR 6	419	Phnom Penh - Kandal - Kampong Cham (Skun) - Kampong Thom - Siem Reap - Banteay Meanchey (Sisophon)
NR 7	515	Phnom Penh - Kandal - Kampong Cham - Kratie - Stung Treng - Lao border (Trapeang Kreal - Veun Kham)

3. Railways

Railways	Stations	Distance (Km)
Line 1		
Phnom Penh - Poipet	Phnom Penh - Poipet	382
(Kampong Chhnang, Pursat Battambang and Sisophon)	Phnom Penh - Sisophon	350
	Phnom Penh - Battambang	274
	Sisophon - Poipet	32
Line 2		
Phnom Penh - Sihanoukville	Phnom Penh - Sihanoukville	263
(Takeo, Kep and Kampot)	Phnom Penh - Kampot	166

4. Border Crossing

No.	International Border Checkpoints		Distance from	(Km)
	Cambodia	Thailand		
1	Poi Pet (Banteay Meanchey)	Ban Klong Luek (Sa Kaeo)	Banteay Meanchey	55
			Phnom Penh	411
			Siem Reap	160
2	Cham Yeam (Koh Kong)	Had Lek (Trat Province)	Koh Kong	4
			Phnom Penh	275
3	O'Smach (Oddar Meanchey)	Chong Chorm (Sorin Province)	Oddar Meanchey	44
			Siem Reap	175
4	Prom (Krong Pailin)	Ban Pak Kard (Chanthabury)	Krong Pailin	20
			Battambang	102
			Phnom Penh	391
5	Daung (Kamreang-Battambang)	Ban Lem (Chanthabury)	Battambang	100
			Phnom Penh	390
6	Chorm (Anlong Veng-Oddar Meanchey)	Sa Ngam (Si Saket Province)	Oddar Meanchey	83
			Siem Reap	148
7	Preah Vihear (Preah Vihear)	Tamar Edaeng (Si Saket Province)	Preah Vihear	115
			Phnom Penh	409
Cambodia - Vietnam				
8	Bavet (Svay Reang)	Moc Bai (Tai Ninh)	Phnom Penh	167
			Svay Reang	44
9	Kaam Samnor (Mekong River)	Chau Doc (An Giang)		
10	Phnom Den (Takeo Province)	Tin Bieng (An Giang)	Takeo	53
			Phnom Penh	143
11	Trapaing Plong (Kampong Cham)	Smach (Tai Ninh)		
12	Trapaing Sre (Kratie)	Hoa Lu (Binh Phuoc)		
13	Bantey Chak Krey (Prey Veng)	Yin Ba (Dong Phab)		
14	Prek Chak (Kampot)	Ha Teang (Kien Giang)		
15	Oya Da (Ratanak Kiri)	Le Thanh (Gia Lai)		
Cambodia - Lao				
16	Trapaing Kreal (Stung Treng Province)	Veun Kham (Champasak Province)	Stung Treng	57
			Ratanak Kiri	190
			Phnom Penh	512



5. Airlines

Domestic Airlines

No.	Airlines	Code	From / To	Flight	Time Travel	Address
	Cambodia Angkor Air	K6	Ho Chi Minh	PNH: 14/week REP: 21/week PNH - REP 28/week		PNH: #206A, Preah Norodom Blvd., Tel.: +855 (0)23 6666788 Fax: +855(0)23 224164

International Airlines

No.	Airlines	Code	From / To	Flight	Time Travel	Address
1	Thai Airways International	TG	Bangkok	PNH: 14/week	1h10mn	PNH: #8B, 294 Mao Tse Toung Blvd., Tel.: +855 (0)23 214359-61 Fax: +855(0)23 214369
2	Vietnam Airlines	VN	Ho Chi Minh Vientiane Ho Chi Minh Hanoi Lung Prabang	PNH: 7/week PNH: 7/week REP: 14/week REP: 21/week REP: 5 /week	1h 2h35mn 2h40mn	PNH: #41, Street 214 Tel.: +855 (0)23 215998 REP: #342, National Road 6, Tel.: +855 (0)63 964488
3	Silk Air	MI	Singapore	PNH: 14/week REP: 8/week	2h15mn 1h55mn	PNH: #219-B, Himawari Hotel Apartments Tel.: +855 (0)23 426808
4	Malaysian Airlines	MH	Kuala Lumpur	PNH: 7/week REP: 3/week	1h50mn 1h05mn	PNH: #172-184, Monivong Blvd., Tel.: +855 (0)23 426688
5	Dragon Air	KA	Hong Kong	PNH: 7/week REP: Charter	2h15mn	PNH: #168, Street 217, Tel.: +855 (0)23 424300
6	Eva Air	BR	Taiwan	PNH: 7/week	3h30mn	PNH: Suite 8A, #298, Mao Tse Toung Tel.: +855 (0)23 219911
7	Bangkok Airways	PG	Bangkok	PNH: 21/week REP: 35/week	1h10mn 1h	PNH: #61A, Street 214, Tel.: +855 (0)23 722545 REP: #571, National Road 6 Tel.: +855 (0)63 720022
8	Shanghai Airlines	FM	Shanghai	PNH: 7/week	4h30mn	PNH: #19, Street 106, Tel.: +855 (0)23 723999
9	China Southern Airlines	CZ	Goangzhou	PNH: 10/week REP: 3/week	1h30mn	PNH: #168, Street Monireth, Tel.: +855 (0)23 424588
10	Lao Airlines	QV	Vientiane	PNH: 0/week REP: 8/week	2h30mn 2h35mn	PNH: #58B, Sihanouk Blvd., Tel.: +855 (0)23 222956 REP: #114, National Road 6 Tel.: +855 (0)63 963283
11	Air Asia Berhad	AK/FD	Kuala Lumpur Bangkok	PNH: 7/week REP: 7/week	2h10mn 2h10mn	PNH: #66, Mao Tse Toung Blvd., Tel.: +855 (0)23 356011
12	Jetstar Asia Airways	3K	Singapore	PNH: 6/week REP: 3/week	1h55mn 2h05mn	PNH: Tel: +855 (0)23 220909 REP: Tel: +855 (0)63 964388
13	China Airlines	CI	Taipei, Taiwan	PNH: 3/week	3h30mn	PNH: #32, Norodom Blvd., Tel.: +855 (0)223525
14	Korean Air	KE	Seoul Seoul Pusan	PNH: 7/week REP: 4/week REP: 3/week	5h	Room No. F3-R03, Intellingent Office, 254 Preah Monivong Blvd., Phnom Penh Tel.: +855 (0)23 224047-49 Fax: +855(0)23 224050
15	Asiana Airlines	OZ	Seoul	PNH: 5/week REP: 4/week	5h 5h30mn	Tel.: +855 (0)23 890441-442
16	China Eastern Airlines	MU	Kunming/Naning	PNH: 7/week REP: 0/week	2h10mn	
17	Thai Air Asia	FD	Bangkok	PNH: 7/week		PNH: #32, Street 322, Norodom Blvd., Fax: +855 (0)23 222695
18	Tuifly Nordic	6B		PNH: Charter		
19	Japan Airlines	JL		REP: Charter		
20	Thomson Airways	BY		REP: Charter		
21	Jeju Air	7C		REP: Charter		
22	Transasia Airways	GE		REP: Charter		
23	Ice Landair	FI		REP: Charter		

Update: 31/03/2010

Note: PNH: Phnom Penh; REP: Siem Reap; KOS: Sihanouk Ville; BBM: Battambang; KKZ: Koh Kong;
MWV: Mondul Kiri; RBE: Rattanak Kiri; TNX: Stung Treng



CAMBODIA

Kingdom of Wonder

- CLEAN CITY
- CLEAN RESORT
- GOOD SERVICE

Lot.3A, Street 169, Sangkat Veal Vong,
Phnom Penh, Kingdom of Cambodia
Tel: +855 23884 972 / Fax: +855 23 884 974
E-mail: admin@mot.gov.kh
Website: www.mot.gov.kh

