



MINISTRY OF TOURISM

KINGDOM OF CAMBODIA
NATION RELIGION KING

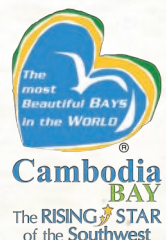
TOURISM STATISTICS

ANNUAL REPORT

2011



Southeast Asia
feel the warmth



**ANNUAL REPORT
ON
TOURISM STATISTICS 2011**

**STATISTICS & TOURISM INFORMATION DEPARTMENT
MINISTRY OF TOURISM**

KINGDOM OF CAMBODIA



MESSAGE

Dr. THONG Khon
Minister of Tourism



Dear all readers,

The Ministry of Tourism (MOT) collates and publishes tourism statistic reports annually providing important information pertaining to the tourism industry. This annual report has been very well received over the years. The commitment of the Statistics and Tourism Information Department and research team generate invaluable statistics providing fundamental indicators for national and international investors and valuable materials beneficial to the private sectors and all stakeholders.

I am pleased to share that our tourism sector has been enjoying a consistent growth at a remarkable rates. The year 2011 saw a 14.9% increase over the year before in international tourist arrivals to Cambodia with more than 2.88 million, of which Siem Reap - Angkor received over 1.6 million with an increase of 23.4%. Also, the number of domestic tourist recorded an estimation of 7.92 million with an increase of around 3.3% over the previous year. Based on the going rate, we are optimistic that Cambodia will be able to attract over 4.5 million international tourist arrivals by year 2015. In order to achieve the above fast-growing trend, the Royal Government has further intensified the promotional campaign "Cambodia – Kingdom of Wonder" where all world heritages are gathered, namely Angkor Wat and Preah Vihear Temple while at the same time pushed up the competitive movement of "Clean City, Clean Resort, Good Service", a potential tool to provide a standard quality tourism services for all visitors, making Cambodia a world-class destination.

I firmly believe this Statistics Report 2011 will be a vital means for either academic purposes or documentation for researchers, private sectors and all stakeholders as it may serve. Plus, this statistics will also act as fundamental indicator for national and international investors to invest in Cambodia.

I sincerely thank you for your interest and wish you contentment.

Sincerely, 



Dr. THONG Khon
Minister of Tourism

Disclaimer

All rights are reserved. No part of this publication may be reproduced in any form or by any electronic or mechanical means, including information storage and retrieval systems, without permission in writing from authorised personnel from the Department of Statistics and Tourism Information of the Ministry of Tourism.

This publication is intended to provide accurate information and include material from sources considered to be reliable. It is provided with the understanding that the Department of Statistics and Tourism Information of the Ministry of Tourism, legally established by the Royal Government of Cambodia, has collected a data of international visitor arrivals at various international border checkpoints in Cambodia, disclaims any warranty concerning information provided, assume no liability for advertising claims and reserve the right to accept or reject any advertising. The publisher welcomes suggestions for corrections or changes. Statements and opinions expressed in this publication do not necessarily represent those of the publisher or Department of Statistics and Tourism Information of the Ministry of Tourism, which assumes no responsibility for editorial content.

It should also be recognised that with this Annual Statistical Report in particular, while the data used were accurate at the time of compilation and printing, some changes due to revisions and/or changing collection and weighting techniques may have occurred since then.

Please contact the Department of Statistics and Tourism Information of the Ministry of Tourism (info@mot.gov.kh) for the detail.



General Information



Official Name	Kingdom of Cambodia
Area	181,035 km ²
National Independence Day	09 November, 1953
Population	13,395,682 (Census 2008)
Annual Population Growth Rate	1.54%
Outbound Tourism	709,616 (2011)
Density	77
Language	Khmer
Religion	Buddhist 97%
Capital	Phnom Penh
Provinces	23
Cities	26
Khans	8
Districts	159
Communes	1,417
Sangkats	204
Country Code	+855
Time	GMT +7 hours

Khmer History

The Mon-Khmer race developed slowly during the first six centuries of the Christian era. Under Indian influence, a powerful maritime empire called “Funan” ruled over all the shores of the Gulf of Siam. Within a short time, this new power known as Chenla absorbed the Funanese Kingdom. In the late 7th century, Chenla broke into two parts: land Chenla (to the north) and water Chenla (to the south along the Gulf of Thailand). Land Chenla was fairly stable during the 8th century, whereas water Chenla was beset by dynastic rivalries.

At the beginning of the 9th century, the kings set up their capital in the present province of Siem Reap. For nearly six centuries, they erected two hundred temples as well as their sanctuaries in the Angkorian area of some 400 square kilometers in the Siem Reap Province.

King Suryavarman II (1113-1150) built the temples such as Angkor Wat, Thommanon, Chau Say Tevoda, Preah Palilay, Preah Pithu, and Banteay Samrè.

Jayavarman VII (1181-1220) was best known for his huge building program. Firstly, he built Ta Prohm (1186) and Preah Khan (1191) to dedicate to his parents. Secondly, he erected Banteay Kdei, Srah Srang, the Terrace of the Leper King, the Terrace of the Elephants, Neak Pean, Ta Som, Ta Nei, and some others in other parts of the country. Thirdly, he founded his great capital, Angkor Thom. Finally, in the center, he built the Bayon with its two hundred stone faces.

The decline of the Angkor era began after the death of King Jayavarman VII in the early 13th century. Due to the Siamese invasion and the limitation of the irrigation system, Khmer power declined so much that the king was finally obliged to move to the vicinity of Phnom Penh in 1431. Resulting from a series of Siamese and Cham invasions, the country was put as a French protectorate in 1863.

After regaining Independence in 1953, the country has had several names:

1. The Kingdom of Cambodia (under the Reachia Niyum Regime from 1953 to 1970);
2. The Khmer Republic (under the Lon Nol Regime from 1970 to 1975);
3. Democratic Kampuchea (under the Pol Pot Genocidal Regime from 1975 to 1979);
4. The People’s Republic of Kampuchea (1979-1989);
5. The State of Cambodia (1989-1993);
6. The Kingdom of Cambodia (1993 until now).

Definitions of Tourism Statistics

- **Statistics** are the data obtained by collecting, processing, compiling, analyzing, publishing and disseminating results, gathered from respondents through statistical collections or from administrative data sources.
- **Data** are information in the form of numbers.
- **Tourism statistics** are the designated official statistics produced by the Ministry of Tourism.
- **Tourism** refers to the activities of individuals travelling to and staying in places outside their usual environment for a specified period and not exceeding one consecutive year for leisure, recreation, business, and any other legal tourism purposes.
- **Tourist** refers to any persons who are Cambodian or non-Cambodian nationals travelling to other places outside their usual environment, staying at least overnight and not exceeding a specified period for leisure, recreation, business, and other legal tourism purposes; and not relevant to the purpose of permanent residence or any remunerated activities.
- **Domestic tourist** refers to any persons who are Cambodian citizens travelling within Cambodia and staying at least overnight and not exceeding a specified period for leisure, recreation, business and other legal tourism activities.
- **International tourist** refers to any foreign visitors to Cambodia who stay at least overnight but not more than a specified period for leisure, recreation, business and other legal tourism purposes; and not relevant to the purpose of permanent residence or any remunerated activities.
- **Internal international tourist** refers to any persons who are not Cambodian nationals, but have legal temporary residence in Cambodia, travelling to and staying overnight for leisure, recreation, business and other legal tourism purposes in the Kingdom of Cambodia.
- **Cambodia outbound tourist** refers to any Cambodian nationals who travel overseas (Cambodian nationals living abroad are excluded), staying at least overnight for leisure, recreation, business or other legal tourism purposes.
- **Same-day visitor** (Excursionist) refers to any individuals who are Cambodian or non-Cambodian nationals travelling to other places outside their usual environment for leisure, recreation, business, and other legal tourism purposes, but do not stay overnight there.
- **Tourism survey** is a scientific statistical collection of data from domestic or international tourism which statistics unit selects as samples.
- **Tourism manpower** refers to any persons who have been working in the tourism sector.
- **Tourism skilled labor** refers to any persons who have professionalism in tourism and have been working in the tourism sector.

Unofficial translation

CONTENTS

Minister Message	
Disclaimer	
General Information	
Definitions	
Tourism Highlight 1993 – 2011	
Quick overview of key trends in 2011	
Map of International Border Check-Point	

Unit I – Inbound and Outbound Tourists

International Tourist Arrivals to Cambodia by Months in 207 - 2011	1
International Tourist Arrivals to Cambodia by Regions in 2011	2
<i>(by all mean of transports)</i>	
International Tourist Arrivals to Cambodia by Country of Residence in 2011.....	3 – 4
<i>(by all mean of transports)</i>	
International Tourist Arrivals to Cambodia by Purpose of Visit in 2011	5 – 6
<i>(by all mean of transports)</i>	
International Tourist Arrivals to Cambodia by Purpose of Visit by Air in 2011	7 – 8
<i>(by air only)</i>	
International Tourist Arrivals to Cambodia by Mode of Arrivals in 2010 - 2011	9
International Tourist Arrivals to Cambodia by Mode of Arrivals in 2007 - 2011 <i>(by all mean of transports)</i>	9
Top ten generating market from 2007 - 2011	10
International tourist arrivals to Cambodia by International border check-points in 2011	11 – 12
Cambodian Outbound Tourism by Int'l Border Check-points in 2011	13
International Outbound Tourism by Int'l Border Check Points in 2011	14
International outbound tourism by country of residence in 2011	15 – 16
Major Data in 1993 – 2011	17
Profile of international Tourist Arrivals to Cambodia in 2008 - 2011 (Tourism Survey 2011).....	18

Section I: Phnom Penh International Airport

International Tourist Arrivals to Phnom Penh International Airport by Months in 2002 - 2011.....	19
International Tourist Arrivals to Phnom Penh International Airport by Regions in 2011	20
International Tourist Arrivals to Phnom Penh International Airport by Country of Residences in 2011	21 – 22
Top Ten Generating markets in 2011, tourist arrivals by ranks	22
International Tourist Arrivals to Phnom Penh International Airport by Purpose of Visit in 2003 – 2011.....	23
Int'l Tourist Departures from Phnom Penh International Airport by Months in 2003 - 2011	24

Section II: Siem Reap International Airport

International Tourist Arrivals to Siem Reap International Airport by Country of Residences in 2011	25 – 26
Top Ten Generating markets in 2011, tourist arrivals by ranks	26
International Tourist arrivals to Siem Reap International Airport by Regions in 2011.....	27
International Tourist Arrivals to Siem Reap Angkor by Mode of Transport in 2011	28
International Tourist Arrivals to Siem Reap International Airport in 2011	29
International Tourist Arrivals to Siem Reap International Airport by Purpose of Visit in 2004 - 2011	30
International Tourist Arrivals to Siem Reap Angkor by Months in 2003 - 2011.....	30

Section III: International Border Check-points

International Tourist Arrivals to Cambodia by Land and Water ways in 2002 - 2011	31
International Tourist Arrivals to Cambodia by Land and Water ways by Country of Residences in 2011.....	32 – 33
Top Ten Generating Markets in 2011, tourist arrivals by ranks	33
International Tourist Arrivals to Cambodia by Land and Water ways by Regions in 2011.....	34
International Tourist Arrivals to Cambodia by Land and Water ways by Purpose of Visit in 2003 – 2011	34

Unit II – Domestic Tourist

Cambodian visitor arrivals to provinces in 2009 – 2011	35
Foreigner visitor arrivals to other destinations in 2009 – 2011	35

Unit III – Tourism Services Statistics

Section I: Accommodations

Number of hotels & guesthouses from 1997 – 2011	37
Distribution of hotels and guesthouses in 2011.....	37

Section II: Travel Agencies & Tour Operators

Number of travel agencies & tour operators from 1996 – 2011	38
Number of travel agencies and tour operators from 2004 – 2011	38

Section III: Tour Guides	
License tour guides	38
Section IV: Transportations	
Airlines.....	39
Published by	40

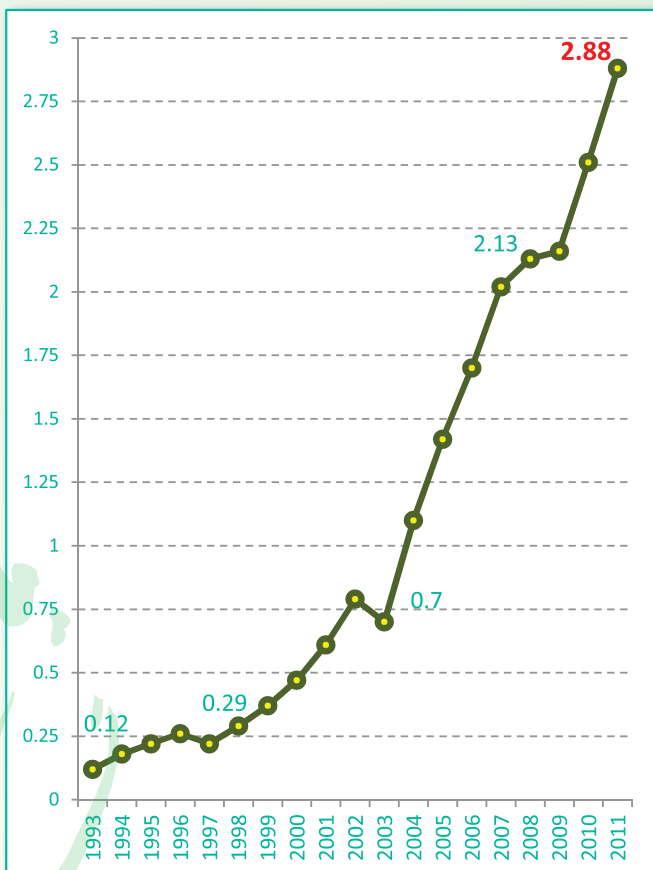


Tourism Highlights

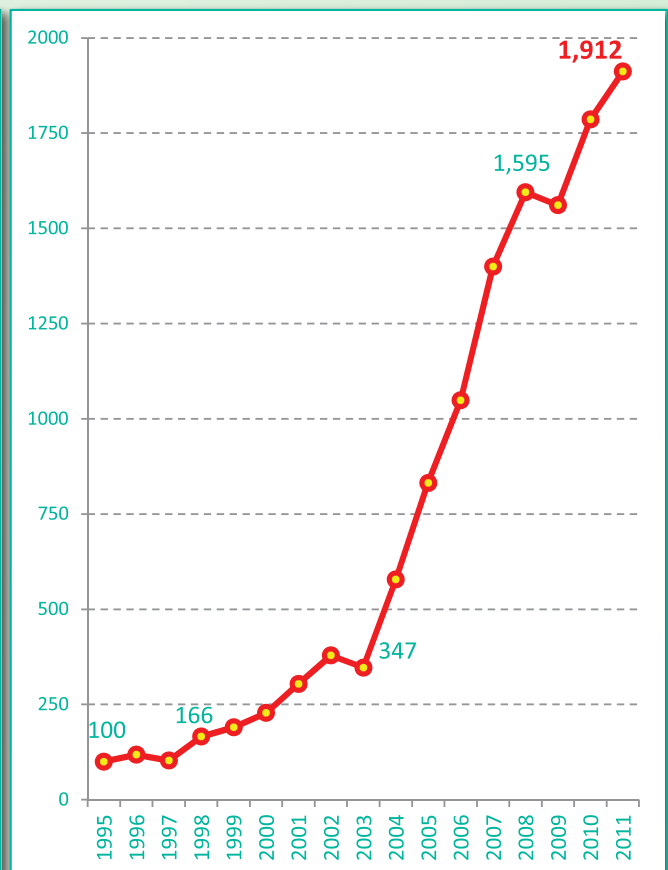
International Tourist Arrivals, Average Length of Stay, Hotels Occupancy & Tourism Receipts 1993 - 2011

Years	Int'l Tourist Arrivals		Average Length of Stay (Days)	Hotels Occupancy (%)	Tourism Receipts (Million US\$)
	Number	Change (%)			
1993	118,183	-	N/A	N/A	N/A
1994	176,617	49.4%	N/A	N/A	N/A
1995	219,680	24.4%	8.00	37.00	100
1996	260,489	18.6%	7.50	40.00	118
1997	218,843	-16.0%	6.40	30.00	103
1998	286,524	30.9%	5.20	40.00	166
1999	367,743	28.3%	5.50	44.00	190
2000	466,365	26.8%	5.50	45.00	228
2001	604,919	29.7%	5.50	48.00	304
2002	786,524	30.0%	5.80	50.00	379
2003	701,014	-10.9%	5.50	50.00	347
2004	1,055,202	50.5%	6.30	52.00	578
2005	1,421,615	34.7%	6.30	52.00	832
2006	1,700,041	19.6%	6.50	54.79	1,049
2007	2,015,128	18.5%	6.50	54.79	1,400
2008	2,125,465	5.5%	6.65	62.68	1,595
2009	2,161,577	1.7%	6.45	63.57	1,561
2010	2,508,289	16.0%	6.45	65.74	1,786
2011	2,881,862	14.9%	6.50	66.15	1,912

Cambodia: Inbound Tourism International Tourist Arrivals (Million)



Cambodia: Tourism Receipts (Million)



Quick overview of key trends

International tourism – 2011 result

- The number of international tourist arrivals to Cambodia for 2011 was monthly collected from a total of twenty international border check points including two international airports, fifteen land international border check points, and three international ports.
- In 2011, international tourist arrivals to Cambodia witnessed 2.88 million with an increase of 14.9%, up from 2.51 million in 2010; in a year characterized by a stalled global economic recovery. By region, Asia and the Pacific witnessed an increase of 16.6%, which topped the ranking while, by sub-region, the arrivals from ASEAN member countries showed (+14.4%), Europe (+10.9%), America (+9.2%), Africa (+29.5%), Middle East (+14.5%).
- December was the peak month in terms of the number of international tourist arrivals witnessing 298,344 visitors equating to 10.4% of total arrivals. January came closer to December, witnessing 274,471 equating to 9.5% of total arrivals.
- In the first quarter of 2011, the visitor arrivals to Cambodia saw a 13.9% increase. In the second quarter of 2011 saw an increase of 12.9% comparing to the same period in 2010. In particular, the third quarter witnessed the highest increasing rate up to 20.2%, but the number of international tourist arrivals was less than the fourth quarter which was the peak period for Cambodia tourism, witnessing 797,073 visitors with an increase of 13%. Importantly, the average length of stay was 6.5 days, up from 6.45 days and the hotel occupancy was 66.15%, up from 65.74%.
- **Tourism receipts:**
As a result, Cambodia tourism receipts was up significantly at USD 1, 912 million for 2011—indicating an increase of 7.0% comparing to the year 2010. The average expenditure of tourists was high at USD 115.78 per day.
- **By air:**
In 2011, the international tourist arrivals by air accounted for 1,480,407 visitors, equating to 51.4% of total arrivals, consisting of 29.0% of air arrivals were registered at Siem Reap International Airport and 22.4% were registered at Phnom Penh International Airport. The arrivals by air to Cambodia saw an increase of 13.5% comparing to the year 2010.
- **By land and waterway:**
In 2011, overland arrivals to Cambodia accounted for 1,320,311 visitors, equating to 45.8% of total arrivals, with an increase of 17.3%. In regards to the share of waterway arrivals, it accounted for 81,144 visitors, equating to 2.8% of total arrivals, with an increase of 4.0%. It could be speculated that this significant increase in overland arrivals helped counter the slow growth in the number of international tourists who travel to Cambodia by air.
- **Purpose of Visit:**
The purpose of the international tourist arrivals to Cambodia in 2011 comprised leisure and holiday, which accounted for 80.62% of total arrivals, 6.92% of business trip, 3.33% of official travel, 6.68% of VFR (Visiting Friends and Relatives), and 2.45% for other reasons.

- **Visitor Profile:**

In 2011, among the 2.88 million international tourists to Cambodia, men accounted for 57.81% of total international arrivals. 78.56% of visitors came to Cambodia for their first visit. Notably, 21.44% travelers registered as return visitors—indicating an increase in revisit tourists comparing to 2010. Among international tourist arrivals to Cambodia, the following occupational categories were represented: 10.27% of visitors were retired persons, 14.21% teachers, 5.93% government officials, 19.66% business persons, 32.69% employees, 13.92% students, and 3.32% others. Among the international tourists visiting Cambodia, 50.35% were free independent travelers (FIT) and 49.65% were group inclusive travelers (GIT).

- **Market share:**

The top-ten markets for Cambodia tourism in 2011 included Vietnam 21.3%, Republic of Korea 11.9%, China 8.6%, Japan 5.6%, United States of America 5.3%, Laos 4.5%, France 4.1%, Thailand 4.1%, Australia 3.6%, and The United Kingdom 3.6%.

- **Domestic Market:**

All tourist sites across Cambodia received a total domestic tourist of 7.92 million in 2011, showing an overall increase of 3.3% comparing to the year 2010. Siem Reap province received the number of domestic tourists of 1.70 million with an increase of 7.9%; whereas Phnom Penh received 2.12 million visitors, with an increase of 6.1%. The coastal areas (lying 440km in the provinces of Kampong Som, Kampot, Kep, and Koh Kong) received 1.69 million visitors, with an increase of 40.9% comparing to the last year. In addition, visitors to the ecotourism destinations in Cambodia—the Northeast provinces of Kratie, Stung Treng, Rattanakiri, and Mondulakiri—received the number of tourists of 0.39 million, with an increase of 19.2%.



Cambodia International Border Check Points



Legend



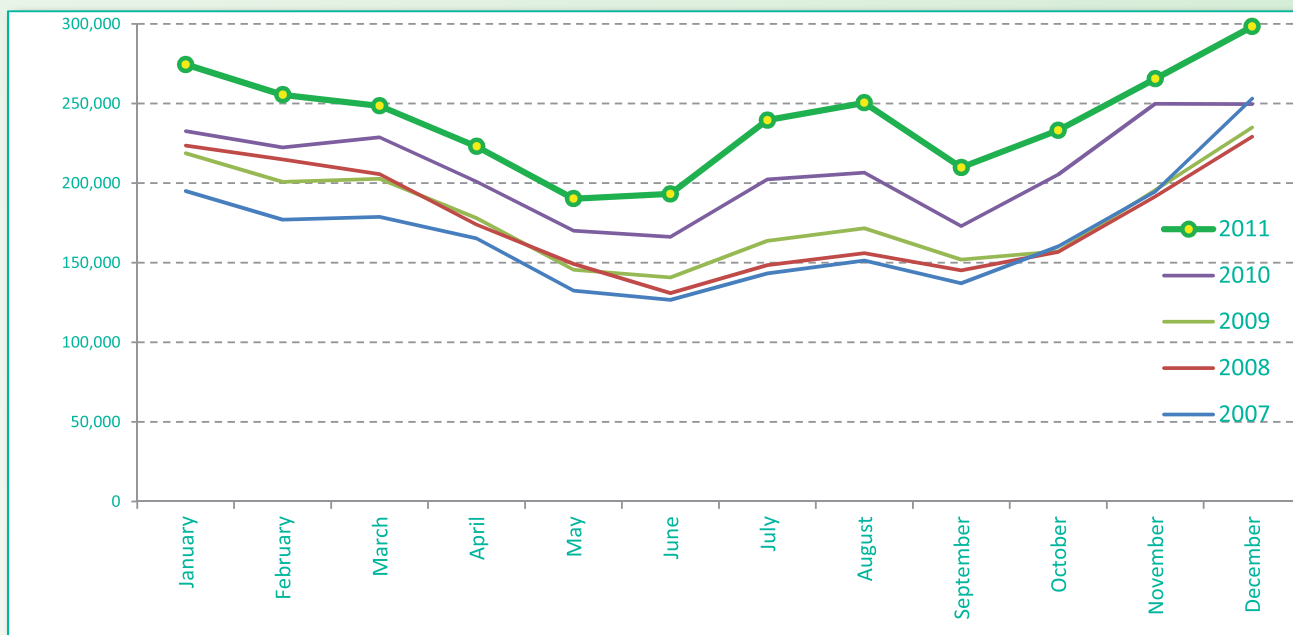
UNIT I

**INBOUND & OUTBOUND
TOURIST**



International Tourist Arrivals to Cambodia by Months in 2007 - 2011

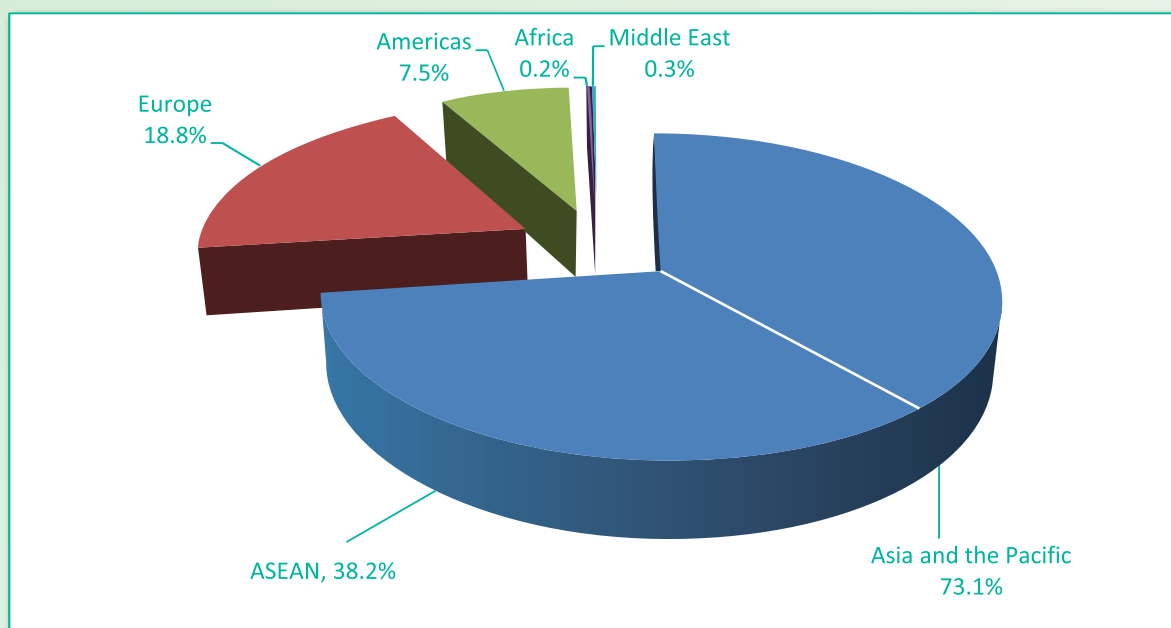
Months	2007	2008	2009	2010	2011	share (%) 2011*	change (%) 2011*/10
Q1	550,813	644,205	622,288	683,692	778,467	27.0	13.9
January	194,932	223,581	218,691	232,590	274,471	9.5	18.0
February	177,130	214,902	200,789	222,354	255,499	8.9	14.9
March	178,751	205,722	202,808	228,748	248,497	8.6	8.6
Q2	424,536	454,031	464,230	537,464	606,562	21.0	12.9
April	165,347	173,903	177,955	200,965	223,032	7.7	11.0
May	132,512	149,275	145,564	170,164	190,258	6.6	11.8
June	126,677	130,853	140,711	166,335	193,272	6.7	16.2
Q3	431,815	449,693	487,422	582,024	699,760	24.3	20.2
July	143,310	148,449	163,817	202,349	239,527	8.3	18.4
August	151,478	156,098	171,668	206,563	250,429	8.7	21.2
September	137,027	145,146	151,937	173,112	209,804	7.3	21.2
Q4	607,964	577,536	587,637	705,109	797,073	27.7	13.0
October	160,235	156,718	157,105	205,515	233,190	8.1	13.5
November	194,646	191,549	195,570	249,892	265,539	9.2	6.3
December	253,083	229,269	234,962	249,702	298,344	10.4	19.5
Total	2,015,128	2,125,465	2,161,577	2,508,289	2,881,862	100.0	14.9



International Tourist Arrivals to Cambodia by Regions in 2011

(by all means of transportation)

Months	Asia and the Pacific	ASEAN	Europe	Americas	Africa	Middle East	Total
Q1	527,098	235,409	180,672	66,116	1,558	3,023	778,467
January	182,879	75,841	65,998	23,843	605	1,146	274,471
February	173,308	72,871	59,449	21,250	447	1,045	255,499
March	170,911	86,697	55,225	21,023	506	832	248,497
Q2	464,856	268,792	91,734	47,018	1,410	1,544	606,562
April	160,638	84,834	42,437	18,835	536	586	223,032
May	149,487	89,379	26,174	13,732	413	452	190,258
June	154,731	94,579	23,123	14,451	461	506	193,272
Q3	543,349	303,594	109,471	43,654	1,461	1,825	699,760
July	182,593	101,427	38,644	17,132	562	596	239,527
August	189,224	102,131	45,227	14,899	485	594	250,429
September	171,532	100,036	25,600	11,623	414	635	209,804
Q4	571,298	293,316	160,986	60,712	1,564	2,513	797,073
October	176,630	98,108	38,207	17,013	415	925	233,190
November	181,641	91,067	62,015	20,757	429	697	265,539
December	213,027	104,141	60,764	22,942	720	891	298,344
Total	2,106,601	1,101,111	542,863	217,500	5,993	8,905	2,881,862
share (%)	73.1	38.2	18.8	7.5	0.2	0.3	100.0



International Tourist Arrivals to Cambodia by Country of Residence in 2011

(by all mean of transportations)

Regions Country of Residence	2011												Total	Female	share (%)
	Jan	Feb	Mar	Apr	May	Jun	Jul	Aug	Sep	Oct	Nov	Dec			
GRAND TOTAL	274,471	255,499	248,497	223,032	190,258	193,272	239,527	250,429	209,804	233,190	265,539	298,344	2,881,862	1,303,117	100.0
Americas	23,843	21,250	21,023	18,835	13,732	14,451	17,132	14,899	11,623	17,013	20,757	22,942	217,500	93,063	7.5
Argentina	615	333	409	284	167	129	183	2,029	250	194	331	299	5,223	2,636	0.2
Brazil	569	314	264	248	277	195	229	176	216	368	380	380	3,616	1,743	0.1
Canada	5,260	4,687	4,687	3,585	2,779	2,348	2,981	2,331	1,675	3,147	4,578	4,404	42,462	18,592	1.5
Chile	257	379	275	205	156	115	182	150	135	162	169	448	2,633	1,212	0.1
Colombia	117	937	65	104	66	106	152	124	64	97	126	102	2,060	1,015	0.1
Costa Rica	17	12	25	48	15	4	21	11	14	11	8	15	201	112	0.0
Ecuador	15	15	12	12	15	14	16	13	9	14	28	21	184	94	0.0
Mexico	192	150	315	353	260	237	452	175	261	342	382	367	3,486	1,685	0.1
Peru	50	24	31	63	50	24	36	32	49	43	47	34	483	218	0.0
United States	16,277	13,957	14,662	13,601	9,417	11,152	12,742	9,684	8,816	12,549	14,636	16,460	153,953	64,599	5.3
Uruguay	59	9	28	23	260	19	15	77	4	5	7	6	512	283	0.0
Other Americas	415	433	250	309	270	108	123	97	130	81	65	406	2,687	874	0.1
Africa	605	447	506	536	413	461	562	485	414	415	429	720	5,993	2,126	0.2
Cameroon	30	25	42	43	35	55	51	38	16	18	17	18	388	76	0.0
Congo	15	15	10	7	22	28	12	15	6	13	12	2	157	35	0.0
Ghana	49	31	53	40	48	29	54	34	19	28	11	19	415	55	0.0
Kenya	15	17	22	32	28	27	22	32	9	29	18	32	283	131	0.0
Liberia	46	42	37	42	50	38	37	21	3	5	7	7	335	66	0.0
Nigeria	39	51	37	71	31	41	42	37	47	37	39	56	528	74	0.0
Sudan	3	2	2	0	2	3	11	4	1	4	13	3	48	15	0.0
South Africa	342	201	227	247	153	176	275	246	257	259	287	546	3,216	1,336	0.1
Uganda	25	19	26	32	33	37	34	40	29	3	11	10	299	208	0.0
Other Africa	41	44	50	22	11	27	24	18	27	19	14	27	324	130	0.0
Middle East	1,146	1,045	832	586	452	506	596	594	635	925	697	891	8,905	2,931	0.3
Egypt	12	12	12	7	18	13	14	12	34	23	13	26	196	37	0.0
Iran	77	56	56	81	49	46	51	65	56	60	41	58	696	107	0.0
Iraq	2	1	6	5	7	25	7	4	16	2	12	4	91	21	0.0
Israel	944	857	638	400	305	257	347	448	425	758	553	712	6,644	2,595	0.2
Kuwait	35	39	40	30	27	86	103	19	42	38	40	31	530	13	0.0
Oman	11	4	7	14	9	14	12	10	8	8	4	6	107	10	0.0
Palestine	2	1	7	5	2	1	2	0	4	4	2	4	34	3	0.0
Qatar	3	23	5	2	8	3	6	4	0	3	4	1	62	23	0.0
Saudi Arabia	5	4	9	6	3	3	15	2	3	11	6	11	78	20	0.0
United Arab Emirates	9	9	12	12	5	27	18	17	25	3	12	6	155	17	0.0
Yemen	14	4	10	9	13	13	7	4	3	3	3	15	98	13	0.0
Other Middle East	32	35	30	15	6	18	14	9	19	12	7	17	214	72	0.0

International Tourist Arrivals to Cambodia by Purpose of Visit in 2011

(by all mean of transportations)

Regions Country of Residence	2010	2011			Total	Female	share	change
		Purpose of Visit					2011*	2011*/10
		Holiday	Business	Other				
GRAND TOTAL	2,508,289	2,706,743	143,385	31,734	2,881,862	1,303,117	100.0	14.9
Asia and the Pacific	1,807,398	1,975,951	114,055	16,595	2,106,601	976,944	73.1	16.6
ASEAN	962,570	1,060,394	33,054	7,663	1,101,111	504,656	38.2	14.4
Brunei Darussalam	460	360	17	104	481	203	0.0	4.6
Indonesia	12,636	12,378	2,887	552	15,817	6,046	0.5	25.2
Lao PDR	92,276	127,772	135	618	128,525	87,976	4.5	39.3
Malaysia	89,952	96,554	6,100	275	102,929	36,803	3.6	14.4
Myanmar	2,614	3,589	466	144	4,199	1,755	0.1	60.6
Philippines	56,156	64,269	5,359	1,090	70,718	42,740	2.5	25.9
Singapore	45,079	45,378	2,008	208	47,594	18,226	1.7	5.6
Thailand	149,108	105,671	9,325	1,762	116,758	41,738	4.1	-21.7
Vietnam	514,289	604,423	6,757	2,910	614,090	269,169	21.3	19.4
Eastern Asia	715,045	778,361	71,581	5,755	855,697	411,173	29.7	19.7
China (RPC)	177,636	203,399	42,100	1,698	247,197	113,482	8.6	39.2
Hong Kong SAR	4,378	4,986	271	9	5,266	2,450	0.2	20.3
Japan	151,795	153,682	6,051	2,071	161,804	76,766	5.6	6.6
Korea (ROK)	289,702	327,294	13,608	1,908	342,810	173,146	11.9	18.3
Mongolia	305	207	13	37	257	131	0.0	-15.7
Taiwan, China	91,229	88,793	9,538	32	98,363	45,198	3.4	7.8
Southern Asia	18,584	15,913	3,268	935	20,116	5,300	0.7	8.2
Afghanistan	180	77	8	28	113	18	0.0	-37.2
Bangladesh	1,658	975	215	126	1,316	142	0.0	-20.6
Bhutan		48	7	26	81	26	0.0	
India	13,542	12,601	2,188	451	15,240	4,397	0.5	12.5
Nepal	1,081	826	218	112	1,156	257	0.0	6.9
Pakistan	1,092	622	392	99	1,113	212	0.0	1.9
Srilanka	1,031	764	240	93	1,097	248	0.0	6.4
Western Asia	0	1,785	144	16	1,945	1,089	0.1	
Kazakhstan		1,097	115	12	1,224	578	0.0	
Uzbekistan		688	29	4	721	511	0.0	
Oceania	107,306	113,724	5,860	2,018	121,602	53,307	4.2	13.3
Australia	93,598	98,254	4,963	1,793	105,010	46,592	3.6	12.2
Fiji		79	26	12	117	39	0.0	
New Zealand	13,708	15,391	871	213	16,475	6,676	0.6	20.2
Other Asia & the Pacific	3,893	5,774	148	208	6,130	1,419	0.2	57.5
Europe	489,400	515,600	18,591	8,672	542,863	228,053	18.8	10.9
Northern Europe	145,767	143,372	6,098	2,130	151,600	58,327	5.3	4.0
Denmark	7,810	8,903	326	123	9,352	3,816	0.3	19.7
Finland	5,244	5,996	229	185	6,410	2,431	0.2	22.2
Iceland	229	342	10	3	355	121	0.0	55.0
Ireland	8,567	8,142	282	117	8,541	3,420	0.3	-0.3
Norway	7,774	7,714	304	110	8,128	3,297	0.3	4.6
Sweden	13,076	14,061	491	210	14,762	5,688	0.5	12.9
United Kingdom	103,067	98,214	4,456	1,382	104,052	39,554	3.6	1.0
Western Europe	238,812	226,787	9,985	5,239	242,011	98,261	8.4	1.3
Austria	8,547	7,337	173	91	7,601	2,994	0.3	-11.1
Belgium	14,295	13,095	488	322	13,905	5,527	0.5	-2.7
France	113,285	107,957	6,383	3,068	117,408	49,485	4.1	3.6
Germany	62,864	60,597	1,651	1,150	63,398	24,630	2.2	0.8
Luxembourg	639	470	9	18	497	201	0.0	-22.2
Monaco		79	0	3	82	39	0.0	
Netherlands	23,537	21,667	685	373	22,725	8,882	0.8	-3.4
Switzerland	15,645	15,585	596	214	16,395	6,503	0.6	4.8
Eastern Europe	54,401	90,073	1,151	369	91,593	48,210	3.2	68.4
Bulgaria	445	442	11	17	470	226	0.0	5.6
Czech Republic	3,113	3,251	41	18	3,310	1,436	0.1	6.3
Estonia		911	24	19	954	379	0.0	
Hungary	2,740	2,510	58	17	2,585	1,194	0.1	-5.7
Lithuania		1,226	11	1	1,238	661	0.0	
Poland	8,712	9,036	54	61	9,151	4,633	0.3	5.0
Romania	1,171	1,055	19	7	1,081	568	0.0	-7.7
Russian Federation	34,170	66,791	781	175	67,747	36,577	2.4	98.3
Slovakia	1,286	1,205	29	35	1,269	522	0.0	-1.3
Ukraine	2,764	3,646	123	19	3,788	2,014	0.1	37.0

International Tourist Arrivals to Cambodia by Purpose of Visit in 2011

(by all mean of transportations)

Regions Country of Residence	2010	2011			Total	Female	share	change
		Purpose of Visit					(%)	(%)
		Holiday	Business	Other			2011*	2011*/10
GRAND TOTAL	2,508,289	2,706,743	143,385	31,734	2,881,862	1,303,117	100.0	14.9
Southern Europe	47,134	50,281	1,253	774	52,308	22,149	1.8	11.0
Croatia	470	496	25	11	532	209	0.0	13.2
Greece	1,395	1,120	35	13	1,168	441	0.0	-16.3
Italy	19,808	20,017	555	265	20,837	7,982	0.7	5.2
Portugal	2,554	2,991	56	34	3,081	1,479	0.1	20.6
Serbia		378	12	18	408	171	0.0	
Slovenia	692	841	22	11	874	374	0.0	26.3
Spain	19,163	21,513	337	273	22,123	10,444	0.8	15.4
Turkey	3,052	2,925	211	149	3,285	1,049	0.1	7.6
Other Europe	3,286	5,087	104	160	5,351	1,106	0.2	62.8
Americas	199,089	201,438	9,976	6,086	217,500	93,063	7.5	9.2
Argentina	2,212	5,139	37	47	5,223	2,636	0.2	136.1
Brazil	2,490	3,526	36	54	3,616	1,743	0.1	45.2
Canada	38,718	40,029	1,862	571	42,462	18,592	1.5	9.7
Chile	2,240	2,494	108	31	2,633	1,212	0.1	17.5
Colombia	1,060	1,993	41	26	2,060	1,015	0.1	94.3
Costa Rica		182	12	7	201	112	0.0	
Ecuador		160	18	6	184	94	0.0	
Mexico	3,157	3,393	62	31	3,486	1,685	0.1	10.4
Peru	468	451	13	19	483	218	0.0	3.2
United States	146,005	141,085	7,707	5,161	153,953	64,599	5.3	5.4
Uruguay	333	501	3	8	512	283	0.0	53.8
Other Americas	2,406	2,485	77	125	2,687	874	0.1	11.7
Africa	4,627	5,253	510	230	5,993	2,126	0.2	29.5
Cameroon	493	369	7	12	388	76	0.0	-21.3
Congo		150	1	6	157	35	0.0	
Ghana	503	375	20	20	415	55	0.0	-17.5
Kenya		225	11	47	283	131	0.0	
Liberia		332	3	0	335	66	0.0	
Nigeria	769	247	258	23	528	74	0.0	-31.3
Sudan	37	34	2	12	48	15	0.0	29.7
South Africa	2,459	2,988	189	39	3,216	1,336	0.1	30.8
Uganda		279	3	17	299	208	0.0	
Other Africa	366	254	16	54	324	130	0.0	-11.5
Middle East	7,775	8,501	253	151	8,905	2,931	0.3	14.5
Egypt	220	159	11	26	196	37	0.0	-10.9
Iran	518	676	16	4	696	107	0.0	34.4
Iraq		70	3	18	91	21	0.0	
Israel	6,186	6,401	202	41	6,644	2,595	0.2	7.4
Kuwait	543	529	0	1	530	13	0.0	-2.4
Oman		102	0	5	107	10	0.0	
Palestine		31	3	0	34	3	0.0	
Qatar		61	1	0	62	23	0.0	
Saudi Arabia	64	66	6	6	78	20	0.0	21.9
United Arab Emirates		150	0	5	155	17	0.0	
Yemen		84	6	8	98	13	0.0	
Other Middle East	244	172	5	37	214	72	0.0	-12.3

International Tourist Arrivals to Cambodia by Purpose of Visit by Air in 2011

(by Air only)

Regions Country of Residence	2010		2011			share		change
		Purpose of Visit			Total	Female	2011*	2011*/10
		Holiday	Business	Other				
GRAND TOTAL	1,304,300	1,360,219	96,539	23,649	1,480,407	677,560	100.0	13.5
Asia and the Pacific	894,042	961,807	75,713	10,981	1,048,501	493,029	70.8	17.3
ASEAN	181,462	184,671	14,439	3,602	202,712	78,596	13.7	11.7
Brunei Darussalam	423	328	15	97	440	177	0.0	4.0
Indonesia	6,920	7,352	881	431	8,664	3,298	0.6	25.2
Lao PDR	3,252	2,551	78	267	2,896	1,050	0.2	-10.9
Malaysia	72,727	81,730	4,740	218	86,688	33,071	5.9	19.2
Myanmar	1,831	2,291	401	142	2,834	1,146	0.2	54.8
Philippines	9,764	8,698	1,233	349	10,280	5,262	0.7	5.3
Singapore	38,373	38,405	1,736	131	40,272	16,596	2.7	4.9
Thailand	28,752	25,129	4,475	1,036	30,640	10,260	2.1	6.6
Vietnam	19,420	18,187	880	931	19,998	7,736	1.4	3.0
Eastern Asia	625,590	684,431	54,267	4,610	743,308	372,929	50.2	18.8
China (RPC)	156,789	184,061	33,574	1,518	219,153	102,893	14.8	39.8
Hong Kong SAR	1,612	1,400	40	4	1,444	721	0.1	-10.4
Japan	134,280	132,047	4,902	1,876	138,825	70,733	9.4	3.4
Korea (ROK)	248,705	284,401	8,694	1,155	294,250	155,215	19.9	18.3
Mongolia	247	127	12	37	176	83	0.0	-28.7
Taiwan, China	83,957	82,395	7,045	20	89,460	43,284	6.0	6.6
Southern Asia	14,305	12,493	2,151	875	15,519	4,456	1.0	8.5
Afghanistan	113	28	5	27	60	4	0.0	-46.9
Bangladesh	1,272	860	175	117	1,152	125	0.1	-9.4
Bhutan		26	7	26	59	16	0.0	
India	10,508	9,925	1,286	413	11,624	3,746	0.8	10.6
Nepal	777	568	121	108	797	180	0.1	2.6
Pakistan	803	468	339	93	900	188	0.1	12.1
Srilanka	832	618	218	91	927	197	0.1	11.4
Western Asia	0	421	121	14	556	207	0.0	
Kazakhstan		348	105	12	465	177	0.0	
Uzbekistan		73	16	2	91	30	0.0	
Oceania	70,280	77,847	4,647	1,721	84,215	36,289	5.7	19.8
Australia	61,400	67,636	3,937	1,534	73,107	31,923	4.9	19.1
Fiji		53	19	10	82	22	0.0	
New Zealand	8,880	10,158	691	177	11,026	4,344	0.7	24.2
Other Asia & the Pacific	2,405	1,944	88	159	2,191	552	0.1	-8.9
Europe	268,543	256,477	13,112	7,216	276,805	116,793	18.7	3.1
Northern Europe	68,665	66,324	4,312	1,864	72,500	29,635	4.9	5.6
Denmark	3,399	3,790	186	98	4,074	1,706	0.3	19.9
Finland	2,433	3,046	133	178	3,357	1,426	0.2	38.0
Iceland	31	44	2		46	20	0.0	48.4
Ireland	3,784	3,174	181	91	3,446	1,384	0.2	-8.9
Norway	3,458	3,662	207	105	3,974	1,637	0.3	14.9
Sweden	5,226	5,901	357	202	6,460	2,665	0.4	23.6
United Kingdom	50,334	46,707	3,246	1,190	51,143	20,797	3.5	1.6
Western Europe	147,286	135,790	7,214	4,265	147,269	61,311	9.9	0.0
Austria	4,987	3,765	106	66	3,937	1,627	0.3	-21.1
Belgium	9,206	7,658	385	274	8,317	3,382	0.6	-9.7
France	78,312	73,222	4,813	2,531	80,566	34,173	5.4	2.9
Germany	34,649	32,833	1,052	911	34,796	14,459	2.4	0.4
Luxembourg	443	321	9	18	348	160	0.0	-21.4
Monaco		37	0	2	39	19	0.0	
Netherlands	10,120	8,597	489	274	9,360	3,496	0.6	-7.5
Switzerland	9,569	9,357	360	189	9,906	3,995	0.7	3.5
Eastern Europe	19,511	20,617	605	333	21,555	10,284	1.5	10.5
Bulgaria	369	294	10	16	320	134	0.0	-13.3
Czech Republic	1,473	1,568	29	16	1,613	713	0.1	9.5
Estonia		390	11	19	420	174	0.0	
Hungary	1,812	1,450	32	17	1,499	688	0.1	-17.3
Lithuania		350	5	1	356	181	0.0	
Poland	3,349	3,565	38	50	3,653	1,784	0.2	9.1
Romania	694	707	16	6	729	354	0.0	5.0
Russian Federation	10,075	10,522	350	167	11,039	5,410	0.7	9.6
Slovakia	692	570	22	26	618	237	0.0	-10.7
Ukraine	1,047	1,201	92	15	1,308	609	0.1	24.9

International Tourist Arrivals to Cambodia by Purpose of Visit by Air in 2011

(by Air only)

Regions Country of Residence	2010		2011				share	change	
			Purpose of Visit			Total	Female	(%)	(%)
			Holiday	Business	Other			2011*	2011*/10
GRAND TOTAL	1,304,300	1,360,219	96,539	23,649	1,480,407	677,560	100.0	13.5	
Southern Europe	31,188	32,113	920	637	33,670	15,120	2.3	8.0	
Croatia	292	258	24	9	291	106	0.0	-0.3	
Greece	968	667	22	13	702	310	0.0	-27.5	
Italy	12,637	12,098	364	194	12,656	5,224	0.9	0.2	
Portugal	1,897	2,036	42	31	2,109	1,029	0.1	11.2	
Serbia		206	10	17	233	91	0.0		
Slovenia	208	276	11	9	296	117	0.0	42.3	
Spain	13,183	14,632	255	240	15,127	7,405	1.0	14.7	
Turkey	2,003	1,940	192	124	2,256	838	0.2	12.6	
Other Europe	1,893	1,633	61	117	1,811	443	0.1	-4.3	
Americas	136,341	136,477	7,215	5,129	148,821	65,566	10.1	9.2	
Argentina	1,214	1,750	10	45	1,805	904	0.1	48.7	
Brazil	1,623	2,532	23	43	2,598	1,320	0.2	60.1	
Canada	23,342	23,545	1,340	497	25,382	11,266	1.7	8.7	
Chile	1,363	1,389	97	27	1,513	714	0.1	11.0	
Colombia	802	1,670	21	17	1,708	859	0.1	113.0	
Costa Rica		132	8	6	146	80	0.0		
Ecuador		116	11	6	133	58	0.0		
Mexico	2,671	2,885	49	29	2,963	1,431	0.2	10.9	
Peru	264	289	8	15	312	149	0.0	18.2	
United States	103,315	100,738	5,606	4,359	110,703	48,304	7.5	7.2	
Uruguay	239	323		2	325	197	0.0	36.0	
Other Americas	1,508	1,108	42	83	1,233	284	0.1	-18.2	
Africa	2,580	2,277	310	193	2,780	988	0.2	7.8	
Cameroon	82	36	3	12	51	12	0.0	-37.8	
Congo		13	1	6	20	1	0.0		
Ghana	116	57	12	18	87	24	0.0	-25.0	
Kenya		141	7	46	194	90	0.0		
Liberia		10	0	0	10	1	0.0		
Nigeria	608	185	155	22	362	55	0.0	-40.5	
Sudan	33	21	2	12	35	9	0.0	6.1	
South Africa	1,505	1,601	125	32	1,758	718	0.1	16.8	
Uganda		42	1	14	57	25	0.0		
Other Africa	236	171	4	31	206	53	0.0	-12.7	
Middle East	2,794	3,181	189	130	3,500	1,184	0.2	25.3	
Egypt	112	123	10	21	154	29	0.0	37.5	
Iran	135	297	22	3	322	84	0.0	138.5	
Iraq		49	3	18	70	17	0.0		
Israel	2,335	2,378	145	38	2,561	980	0.2	9.7	
Kuwait	33	42	1	1	44	9	0.0	33.3	
Oman		27	0	5	32	6	0.0		
Palestine		26	3	0	29	2	0.0		
Qatar		20	0	0	20	4	0.0		
Saudi Arabia	31	41	5	11	57	13	0.0	83.9	
United Arab Emirates		14	0	4	18	6	0.0		
Yemen		54	0	8	62	10	0.0		
Other Middle East	148	110	0	21	131	24	0.0	-11.5	

International Tourist Arrivals to Cambodia by Mode of Arrivals in 2010 - 2011

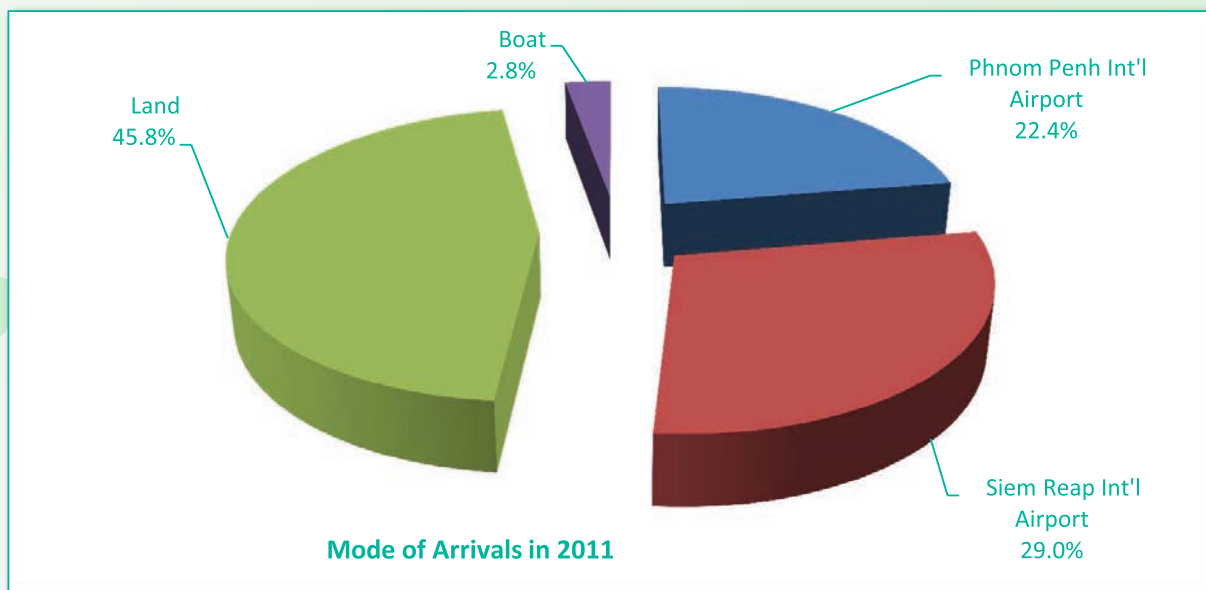
(by all means of transportation)

Months	2010				2011				change (%) 11*/10
	Air	Land	Boat	Total	Air	Land	Boat	Total	
Q1	371,506	285,357	26,829	683,692	427,429	325,608	25,430	778,467	13.9
January	126,995	98,499	7,096	232,590	152,181	114,179	8,111	274,471	18.0
February	121,895	93,275	7,184	222,354	145,008	102,767	7,724	255,499	14.9
March	122,616	93,583	12,549	228,748	130,240	108,662	9,595	248,497	8.6
Q2	260,867	263,979	12,618	537,464	286,944	303,929	15,689	606,562	12.9
April	97,475	99,091	4,399	200,965	106,665	108,624	7,743	223,032	11.0
May	83,542	83,501	3,121	170,164	90,269	95,915	4,074	190,258	11.8
June	79,850	81,387	5,098	166,335	90,010	99,390	3,872	193,272	16.2
Q3	288,254	276,237	17,533	582,024	335,287	345,590	18,883	699,760	20.2
July	97,557	98,470	6,322	202,349	116,342	116,376	6,809	239,527	18.4
August	104,786	94,371	7,406	206,563	123,666	118,913	7,850	250,429	21.2
September	85,911	83,396	3,805	173,112	95,279	110,301	4,224	209,804	21.2
Q4	383,673	300,401	21,035	705,109	430,747	345,184	21,142	797,073	13.0
October	107,801	91,700	6,014	205,515	118,822	108,501	5,867	233,190	13.5
November	138,750	103,049	8,093	249,892	149,415	107,173	8,951	265,539	6.3
December	137,122	105,652	6,928	249,702	162,510	129,510	6,324	298,344	19.5
Total	1,304,300	1,125,974	78,015	2,508,289	1,480,407	1,320,311	81,144	2,881,862	14.9

International Tourist Arrivals to Cambodia by Mode of Arrivals in 2007 - 2011

(by all means of transportation)

Mode of arrivals	visitor arrivals					share (%) 2010*	change (%) 10*/09
	2007	2008	2009	2010	2011		
Air	1,296,513	1,239,407	1,111,729	1,304,300	1,480,407	51.4	13.5
Phnom Penh Int'l Airport	535,262	570,903	527,745	591,628	645,235	22.4	9.1
Siem Reap Int'l Airport	761,251	668,504	583,984	712,672	835,172	29.0	17.2
Land & waterways	718,615	886,058	1,049,848	1,203,989	1,401,455	48.6	16.4
Land	674,927	814,169	971,539	1,125,974	1,320,311	45.8	17.3
Boat	43,688	71,889	78,309	78,015	81,144	2.8	4.0
Total	2,015,128	2,125,465	2,161,577	2,508,289	2,881,862	100.0	14.9



Top Ten Generating Market from 2007 - 2011

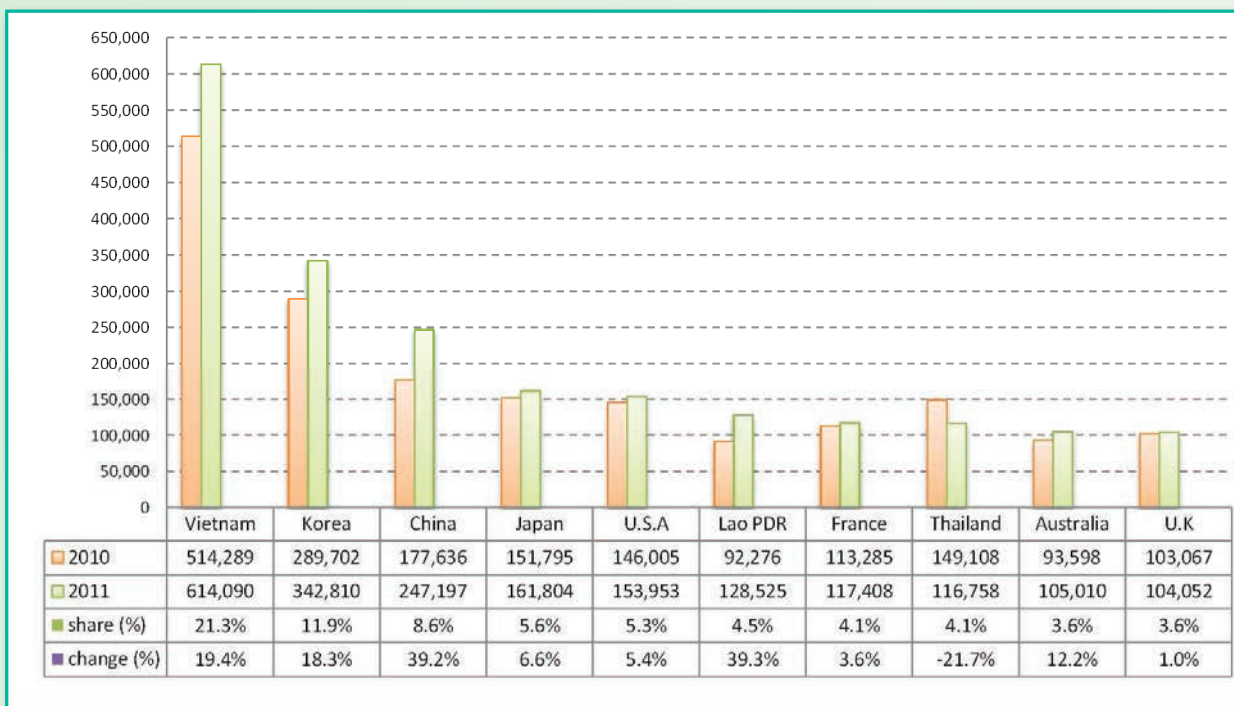
2007				
rank		vitsitors	share (%)	change (%)
1	Korea	329,909	16.4	15.6
2	Japan	161,973	8.0	2.3
3	USA	137,539	6.8	11.1
4	Vietnam	125,442	6.2	61.8
5	China	118,417	5.9	47.0
6	Taiwan, China	118,180	5.9	38.8
7	Thailand	101,590	5.0	32.0
8	France	90,168	4.5	25.3
9	United Kingdom	84,103	4.2	14.0
10	Malaysia	84,039	4.2	9.1

2008				
rank		vitsitors	share (%)	change (%)
1	Korea	266,525	12.5	-19.2
2	Vietnam	209,516	9.9	67.0
3	Japan	163,806	7.7	1.1
4	USA	145,079	6.8	5.5
5	China	129,626	6.1	9.5
6	Thailand	109,020	5.1	7.3
7	United Kingdom	98,093	4.6	8.8
8	France	97,517	4.6	16.0
9	Australia	84,957	4.0	18.6
10	Taiwan, China	83,000	3.9	-29.8

2009				
rank		vitsitors	share (%)	change (%)
1	Vietnam	316,202	14.6	50.9
2	Korea	197,725	9.2	-25.8
3	U.S.A	148,482	6.9	2.4
4	Japan	146,286	6.8	-10.7
5	China	128,210	5.9	-1.1
6	United Kingdom	106,837	4.9	8.9
7	France	105,437	4.9	8.1
8	Thailand	102,018	4.7	-6.4
9	Lao PDR	94,181	4.4	54.6
10	Australia	84,581	3.9	-0.4

2010				
rank		vitsitors	share (%)	change (%)
1	Vietnam	514,289	20.5	62.6
2	Korea	289,702	11.6	46.5
3	China	177,636	7.1	38.6
4	Japan	151,795	6.1	3.8
5	Thailand	149,108	5.9	16.3
6	U.S.A	146,005	5.8	-1.7
7	France	113,285	4.5	7.4
8	U.K	103,067	4.1	-3.5
9	Australia	93,598	3.7	10.7
10	Taiwan, China	91,229	3.6	26.5

2011



International Tourist Arrivals to Cambodia by International Border Check-points in 2011

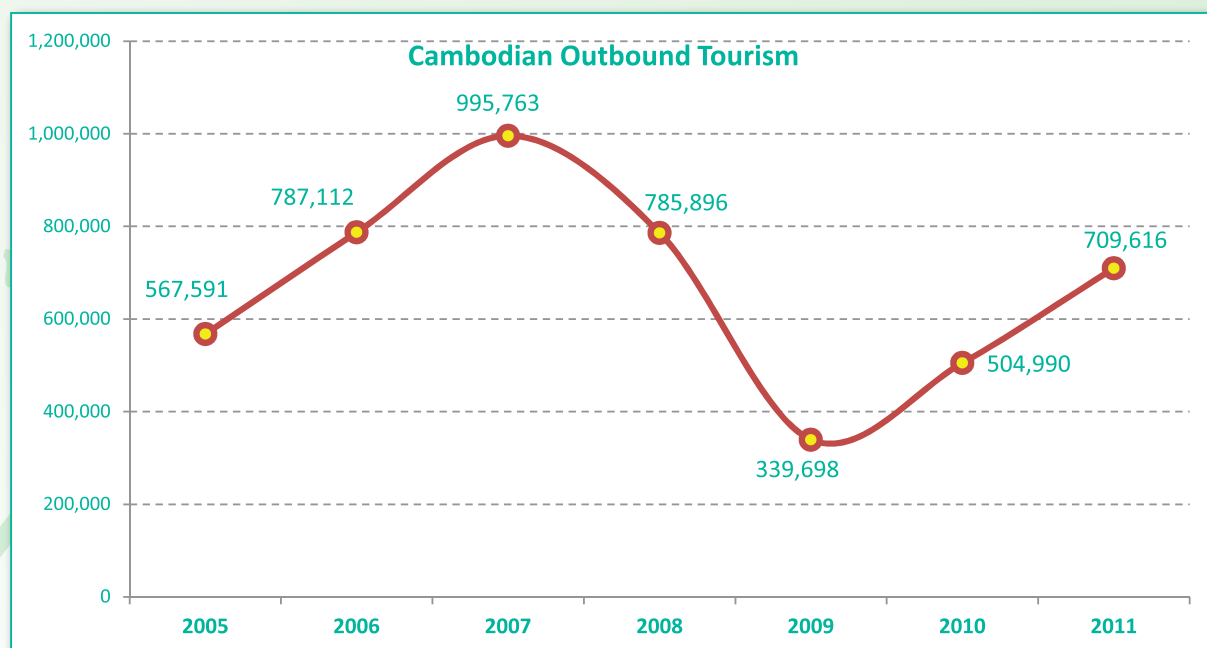
No.	International border check-points	Months												share (%)	
		Jan	Feb	Mar	Apr	May	Jun	Jul	Aug	Sep	Oct	Nov	Dec		TOTAL
	Grand Total	274,471	255,499	248,497	223,032	190,258	193,272	239,527	250,429	209,804	233,190	265,539	298,344	2,881,862	100.0
	Air	152,181	145,008	130,240	106,665	90,269	90,010	116,342	123,666	95,279	118,822	149,415	162,510	1,480,407	51.4
	Phnom Penh Int'l Airport	58,905	57,202	54,451	49,478	44,874	45,554	56,875	55,182	45,474	53,459	61,005	62,776	645,235	22.4
	Siem Reap Int'l Airport	93,276	87,806	75,789	57,187	45,395	44,456	59,467	68,484	49,805	65,363	88,410	99,734	835,172	29.0
	Lands and Water ways	122,290	110,491	118,257	116,367	99,989	103,262	123,185	126,763	114,525	114,368	116,124	135,834	1,401,455	48.6
	Lands	114,179	102,767	108,662	108,624	95,915	99,390	116,376	118,913	110,301	108,501	107,173	129,510	1,320,311	45.8
	Water ways	8,111	7,724	9,595	7,743	4,074	3,872	6,809	7,850	4,224	5,867	8,951	6,324	81,144	2.8
1	Cambodia - Thailand	62,438	51,123	55,339	48,513	43,584	44,805	54,968	57,642	55,934	54,587	48,583	69,994	647,510	22.5
	Poi Pet	43,611	35,216	36,938	30,658	27,064	28,365	34,369	36,537	34,718	32,067	30,882	44,666	415,091	14.4
	Cham Yeam	3,858	3,371	2,302	2,560	1,455	1,585	1,980	1,833	1,791	1,849	2,450	3,278	28,312	1.0
	Prom	4,821	4,417	4,710	3,915	4,514	4,393	4,839	4,979	5,134	5,843	5,398	7,361	60,324	2.1
	Daung	6,863	5,498	8,109	8,472	9,935	9,716	10,775	10,960	11,420	12,018	7,590	10,779	112,135	3.9
	O'Smach	1,061	494	683	543	471	541	704	648	1,421	1,336	950	1,887	10,739	0.4
	Chorm	1,392	338	306	254	145	205	238	682	1,450	1,474	1,313	2,021	9,818	0.3
	Sihanoukville (Int'l sea port)	832	1,789	2,291	2,111	0	0	2,063	2,003	0	0	0	2	11,091	0.4
2	Cambodia - Vietnam	56,193	54,974	59,334	64,802	53,628	56,031	64,775	65,736	56,317	57,302	63,342	62,261	714,695	24.8
	Bavet	34,319	34,602	34,497	40,863	31,412	35,845	42,743	41,756	36,830	34,128	34,356	39,093	440,444	15.3
	Phnom Den	2,251	2,636	3,565	2,344	3,064	2,612	3,050	3,597	2,866	2,615	3,852	2,320	34,772	1.2
	Trapaing Plong	2,191	1,767	2,682	2,865	2,792	2,375	2,300	2,756	2,151	2,663	3,245	2,044	29,831	1.0
	Trapaing Sré	5,142	4,186	5,491	5,697	4,983	4,828	5,262	5,060	4,609	4,996	5,192	5,015	60,461	2.1
	Prek Chak	2,519	2,804	2,139	2,879	2,261	2,132	2,361	2,407	2,287	2,049	2,537	2,458	28,833	1.0
	Oya Dao	1,230	1,557	1,957	1,941	1,872	1,782	1,666	1,742	1,618	1,793	2,208	2,743	22,109	0.8
	Banteay Chak Krey	1,107	1,019	1,191	1,299	1,178	1,177	1,275	1,399	1,448	1,281	1,479	1,245	15,098	0.5
	Prey Vor	155	468	508	1,282	1,992	1,408	1,372	1,172	284	1,910	1,522	1,021	13,094	0.5
	Kaam Samnor	6,589	5,319	6,556	5,341	4,074	3,532	4,413	5,488	3,725	5,185	8,005	5,802	64,029	2.2
	Phnom Penh Port	690	616	748	291	0	340	333	359	499	682	946	520	6,024	0.2
3	Cambodia - Lao	3,659	4,394	3,584	3,052	2,777	2,426	3,442	3,385	2,274	2,479	4,199	3,579	39,250	1.4
	Trapaing Kreal	3,659	4,394	3,584	3,052	2,777	2,426	3,442	3,385	2,274	2,479	4,199	3,579	39,250	1.4

International Tourist Arrivals to Cambodia by International Border Check-points in 2011
(by purpose of visit)

International Border No. Check-points	2010	2011			Total	share (%) 2011*	change (%) 2011*/10
		Purpose of Visit					
		Holiday	Business	Other			
Grand Total	2,508,289	2,706,743	143,385	31,734	2,881,862	100.0	14.9
Air	1,304,300	1,360,219	96,539	23,649	1,480,407	51.4	13.5
Phnom Penh Int'l Airport	591,628	533,778	91,223	20,234	645,235	22.4	9.1
Siem Reap Int'l Airport	712,672	826,441	5,316	3,415	835,172	29.0	17.2
Lands and Water ways	1,203,989	1,346,524	46,846	8,085	1,401,455	48.6	16.4
Lands	1,125,974	1,265,727	46,568	8,016	1,320,311	45.8	17.3
Water ways	78,015	80,797	278	69	81,144	2.8	4.0
1 Cambodia - Thailand	483,938	622,949	21,324	3,237	647,510	22.5	33.8
Poi Pet	337,585	396,399	16,296	2,396	415,091	14.4	23.0
Cham Yeam	25,074	23,428	4,304	580	28,312	1.0	12.9
Prom	26,785	59,814	414	96	60,324	2.1	125.2
Daung	57,653	112,046	81	8	112,135	3.9	94.5
O'Smach	12,342	10,567	162	10	10,739	0.4	-13.0
Chorm	8,218	9,604	67	147	9,818	0.3	19.5
Sihanoukville (Int'l sea port)	16,281	11,091			11,091	0.4	-31.9
2 Cambodia - Vietnam	577,286	685,121	25,229	4,345	714,695	24.8	23.8
Bavet	360,213	415,923	21,656	2,865	440,444	15.3	22.3
Phnom Den	30,379	34,256	358	158	34,772	1.2	14.5
Trapaing Plong	26,134	29,083	630	118	29,831	1.0	14.1
Trapaing Sré	53,810	59,822	350	289	60,461	2.1	12.4
Prek Chak	19,790	26,910	1,565	358	28,833	1.0	45.7
Oya Dao	12,921	21,534	183	392	22,109	0.8	71.1
Banteay Chak Krey	12,305	14,829	182	87	15,098	0.5	22.7
Prey Vor		13,058	27	9	13,094	0.5	
Kaam Samnor	56,882	63,682	278	69	64,029	2.2	12.6
Phnom Penh Port	4,852	6,024			6,024	0.2	24.2
3 Cambodia - Lao	33,375	38,454	293	503	39,250	1.4	17.6
Trapaing Kreal	33,375	38,454	293	503	39,250	1.4	17.6

Cambodian Outbound Tourism by Int'l Border Check-points in 2011 (by mode of transports and purpose of visit)

No.	International Border Check-points	2010	2011			Total	share	change
			Purpose of Visit				(%)	(%)
			Holiday	Business	Other		2011*	2011*/10
	Grand Total	504,990	685,792	0	23,824	709,616	100.0	40.5
	Air	160,410	164,293	0	6,657	170,950	24.1	6.6
	Phnom Penh Int'l Airport	147,555	161,867		6,587	168,454	23.7	14.2
	Siem Reap Int'l Airport	12,855	2,426		70	2,496	0.4	-80.6
	Lands and Water ways	344,580	521,499	0	17,167	538,666	75.9	56.3
	Lands	343,684	520,269	0	17,167	537,436	75.7	56.4
	Water ways	896	1,230	0	0	1,230	0.2	37.3
1	Cambodia - Thailand	90,694	314,309	0	2,820	317,129	44.7	249.7
	Poi Pet	62,892	277,142		1,815	278,957	39.3	343.5
	Cham Yeam	8,423	13,934		625	14,559	2.1	72.8
	Prom	7,467	9,655		251	9,906	1.4	32.7
	Daung	5,465	7,898		28	7,926	1.1	45.0
	O'Smach	3,515	4,478		41	4,519	0.6	28.6
	Chorm	2,932	1,202		60	1,262	0.2	-57.0
2	Cambodia - Vietnam	246,603	202,742	0	14,018	216,760	30.5	-12.1
	Bavet	218,353	183,078		12,953	196,031	27.6	-10.2
	Phnom Den	8,170	5,670		224	5,894	0.8	-27.9
	Trapaing Plong	6,452	5,030		245	5,275	0.7	-18.2
	Trapaing Sré	3,226	1,201		169	1,370	0.2	-57.5
	Prek Chak	5,115	4,128		182	4,310	0.6	-15.7
	Oya Dao	2,950	987		175	1,162	0.2	-60.6
	Banteay Chak Krey	1,441	1,418		70	1,488	0.2	3.3
	Kaam Samnor	894	1,225			1,225	0.2	37.0
	Phnom Penh Port	2	5			5	0.0	150.0
3	Cambodia - Lao	7,283	4,448	0	329	4,777	0.7	-34.4
	Trapaing Kreal	7,283	4,448		329	4,777	0.7	-34.4



International Outbound Tourism by Int'l Border Check Points in 2011 (by mode of transports and purpose of visit)

International Border No. Check Points	2010	2011			Total	share (%) 2011*	change (%) 2011*/10
		Purpose of Visit					
		Holiday	Business	Other			
Grand Total	2,354,832	2,677,676	140,299	29,334	2,847,309	100.0	20.9
Air	1,233,096	1,368,854	99,519	22,933	1,491,306	52.4	20.9
Phnom Penh Int'l Airport	565,907	546,415	94,281	19,126	659,822	23.2	16.6
Siem Reap Int'l Airport	667,189	822,439	5,238	3,807	831,484	29.2	24.6
Lands and Water ways	1,121,736	1,308,822	40,780	6,401	1,356,003	47.6	20.9
Lands	1,045,374	1,251,141	40,402	6,369	1,297,912	45.6	24.2
Water ways	76,362	57,681	378	32	58,091	2.0	-23.9
1 Cambodia - Thailand	556,710	666,274	17,870	2,344	686,488	24.1	23.3
Poi Pet	331,485	412,561	13,032	1,628	427,221	15.0	28.9
Cham Yeam	60,436	32,383	4,132	481	36,996	1.3	-38.8
Prom	25,093	63,685	370	102	64,157	2.3	155.7
Daung	83,605	113,200	68	2	113,270	4.0	35.5
O'Smach	13,353	23,898	202	23	24,123	0.8	80.7
Chorm	9,867	9,429	66	108	9,603	0.3	-2.7
Sihanoukville (Int'l sea port)	32,871	11,118			11,118	0.4	-66.2
2 Cambodia - Vietnam	544,937	614,462	22,537	3,770	640,769	22.5	17.6
Bavet	376,110	384,169	19,736	2,553	406,458	14.3	8.1
Phnom Den	28,565	33,631	95	139	33,865	1.2	18.6
Trapaing Plong	22,809	26,364	493	67	26,924	0.9	18.0
Trapaing Sré	29,070	61,238	290	251	61,779	2.2	112.5
Prek Chak	20,805	28,587	1,170	288	30,045	1.1	44.4
Oya Dao	11,881	20,765	160	356	21,281	0.7	79.1
Banteay Chak Krey	12,206	13,145	215	84	13,444	0.5	10.1
Kaam Samnor	39,506	40,552	378	32	40,962	1.4	3.7
Phnom Penh Port	3,985	6,011			6,011	0.2	50.8
3 Cambodia - Lao	20,089	28,086	373	287	28,746	1.0	43.1
Trapaing Kreal	20,089	28,086	373	287	28,746	1.0	43.1

International Outbound Tourism by Months in 2009 - 2010

Months	International Outbound			change (%) 2011*/10
	2009	2009	2011	
January	199,905	215,702	279,303	29.5
February	183,808	212,222	253,363	19.4
March	188,323	213,645	250,261	17.1
April	150,744	183,147	215,957	17.9
May	146,758	174,019	191,274	9.9
June	125,746	155,291	188,863	21.6
July	150,580	185,426	230,580	24.4
August	169,034	206,427	257,499	24.7
September	130,337	159,720	215,988	35.2
October	143,354	188,208	220,797	17.3
November	173,102	230,741	254,434	10.3
December	190,136	230,275	288,990	25.5
Total	1,951,827	2,354,823	2,847,309	20.9

International Outbound Tourism by Country of Residence in 2011

(by Purpose of Visit)

Regions Country of Residence	2010	2011			Total	Female	share	change
		Purpose of Visit					(%)	(%)
		Holiday	Business	Other			2011*	2011*/10
GRAND TOTAL	2,354,832	2,677,676	140,299	29,334	2,847,309	1,302,017	100.0	20.9
Asia and the Pacific	1,671,658	1,957,006	111,762	15,146	2,083,914	973,329	73.2	24.7
ASEAN	825,202	1,038,853	33,315	6,739	1,078,907	497,436	37.9	30.7
Brunei Darussalam	382	366	22	118	506	224	0.0	32.5
Indonesia	12,512	15,437	2,402	408	18,247	6,413	0.6	45.8
Lao PDR	82,471	127,653	134	508	128,295	89,554	4.5	55.6
Malaysia	87,507	95,584	7,004	239	102,827	35,833	3.6	17.5
Myanmar	2,418	3,574	499	107	4,180	1,796	0.1	72.9
Philippines	55,214	63,366	5,328	1,065	69,759	42,023	2.4	26.3
Singapore	43,202	44,777	2,316	173	47,266	17,326	1.7	9.4
Thailand	93,412	100,918	9,277	1,216	111,411	43,360	3.9	19.3
Vietnam	448,084	587,178	6,333	2,905	596,416	260,907	20.9	33.1
Eastern Asia	715,398	783,129	69,575	5,433	858,137	412,459	30.1	20.0
China (RPC)	174,124	201,929	41,893	1,607	245,429	114,060	8.6	41.0
Hong Kong SAR	4,500	4,511	181	17	4,709	2,180	0.2	4.6
Japan	150,318	149,290	4,982	1,867	156,139	75,218	5.5	3.9
Korea (ROK)	294,881	337,590	12,465	1,870	351,925	174,789	12.4	19.3
Mongolia	227	194	19	45	258	128	0.0	13.7
Taiwan, China	91,348	89,615	10,035	27	99,677	46,084	3.5	9.1
Southern Asia	18,217	15,358	2,964	894	19,216	5,687	0.7	5.5
Afghanistan	83	27	7	19	53	9	0.0	-36.1
Bangladesh	1,675	539	203	128	870	206	0.0	-48.1
Bhutan		49	5	25	79	29	0.0	
India	13,231	12,676	2,007	465	15,148	4,651	0.5	14.5
Nepal	1,065	751	185	106	1,042	281	0.0	-2.2
Pakistan	1,045	602	360	78	1,040	266	0.0	-0.5
Srilanka	1,118	714	197	73	984	245	0.0	-12.0
Western Asia	0	1,768	158	15	1,941	1,092	0.1	
Kazakhstan		1,078	131	12	1,221	567	0.0	
Uzbekistan		690	27	3	720	525	0.0	
Oceania	107,453	115,255	5,646	1,922	122,823	55,554	4.3	14.3
Australia	93,155	100,262	4,786	1,662	106,710	48,547	3.7	14.6
Fiji		65	18	15	98	35	0.0	
New Zealand	14,298	14,928	842	245	16,015	6,972	0.6	12.0
Other Asia & the Pacific	5,388	2,643	104	143	2,890	1,101	0.1	-46.4
Europe	481,152	511,977	18,365	8,219	538,561	230,300	18.9	11.9
Northern Europe	141,923	140,214	5,963	2,085	148,262	57,873	5.2	4.5
Denmark	7,726	8,402	293	137	8,832	3,443	0.3	14.3
Finland	5,619	5,214	226	160	5,600	2,031	0.2	-0.3
Iceland	241	323	7	2	332	109	0.0	37.8
Ireland	8,540	7,740	265	155	8,160	3,484	0.3	-4.4
Norway	7,913	7,637	257	136	8,030	3,213	0.3	1.5
Sweden	12,448	13,840	482	200	14,522	5,720	0.5	16.7
United Kingdom	99,436	97,058	4,433	1,295	102,786	39,873	3.6	3.4
Western Europe	234,748	224,710	9,709	4,798	239,217	100,052	8.4	1.9
Austria	12,036	7,200	167	90	7,457	3,005	0.3	-38.0
Belgium	14,368	12,951	566	353	13,870	5,607	0.5	-3.5
France	107,813	107,033	6,197	2,734	115,964	49,781	4.1	7.6
Germany	61,407	59,092	1,516	1,033	61,641	25,244	2.2	0.4
Luxembourg	695	609	9	17	635	307	0.0	-8.6
Monaco		74		1	75	36	0.0	
Netherlands	23,069	21,878	724	360	22,962	9,343	0.8	-0.5
Switzerland	15,360	15,873	530	210	16,613	6,729	0.6	8.2
Eastern Europe	52,929	89,316	1,075	359	90,750	47,060	3.2	71.5
Bulgaria	450	402	56	8	466	208	0.0	3.6
Czech Republic	2,895	3,180	34	21	3,235	1,395	0.1	11.7
Estonia		933	24	9	966	398	0.0	
Hungary	2,846	2,419	55	22	2,496	1,120	0.1	-12.3
Lithuania		1,146	8	8	1,162	617	0.0	
Poland	8,309	8,844	44	62	8,950	4,486	0.3	7.7
Romania	836	1,020	20	12	1,052	528	0.0	25.8
Russian Federation	34,217	66,462	704	147	67,313	35,717	2.4	96.7
Slovakia	888	1,174	32	43	1,249	507	0.0	40.7
Ukraine	2,488	3,736	98	27	3,861	2,084	0.1	55.2

International Outbound Tourism by Country of Residence in 2011

(by Purpose of Visit)

Regions Country of Residence	2010	2011					share (%) 2011*	change (%) 2011*/10
		Purpose of Visit			Total	Female		
		Holiday	Business	Other				
GRAND TOTAL	2,354,832	2,677,676	140,299	29,334	2,847,309	1,302,017	100.0	20.9
Southern Europe	46,913	55,517	1,538	863	57,918	24,381	2.0	23.5
Croatia	422	502	30	12	544	210	0.0	28.9
Greece	1,303	1,222	14	13	1,249	469	0.0	-4.1
Italy	19,506	25,223	897	393	26,513	10,331	0.9	35.9
Portugal	2,571	3,046	43	38	3,127	1,461	0.1	21.6
Serbia		363	19	12	394	163	0.0	
Slovenia	1,014	796	16	12	824	336	0.0	-18.7
Spain	19,146	21,508	336	254	22,098	10,404	0.8	15.4
Turkey	2,951	2,857	183	129	3,169	1,007	0.1	7.4
Other Europe	4,639	2,220	80	114	2,414	934	0.1	-48.0
Americas	189,366	193,784	9,463	5,625	208,872	92,997	7.3	10.3
Argentina	2,286	3,001	33	42	3,076	1,492	0.1	34.6
Brazil	2,672	3,563	33	60	3,656	1,746	0.1	36.8
Canada	37,296	39,910	1,710	610	42,230	18,876	1.5	13.2
Chile	1,660	2,826	197	35	3,058	1,404	0.1	84.2
Colombia	926	1,088	18	46	1,152	553	0.0	24.4
Costa Rica		273	16	4	293	129	0.0	
Ecuador		144	7	8	159	68	0.0	
Mexico	3,083	3,572	64	32	3,668	1,753	0.1	19.0
Peru	487	468	15	12	495	222	0.0	1.6
United States	137,388	136,961	7,306	4,693	148,960	65,764	5.2	8.4
Uruguay	325	443	5	2	450	218	0.0	38.5
Other Americas	3,243	1,535	59	81	1,675	772	0.1	-48.4
Africa	4,718	6,352	485	214	7,051	2,553	0.2	49.4
Cameroon	586	363	6	12	381	79	0.0	-35.0
Congo		143	2	4	149	31	0.0	
Ghana	416	357	15	17	389	39	0.0	-6.5
Kenya		237	14	42	293	137	0.0	
Liberia		335			335	57	0.0	
Nigeria	755	1,251	236	36	1,523	463	0.1	101.7
Sudan	40	59	2	13	74	17	0.0	85.0
South Africa	2,446	3,107	192	35	3,334	1,400	0.1	36.3
Uganda		264	2	18	284	201	0.0	
Other Africa	475	236	16	37	289	129	0.0	-39.2
Middle East	7,938	8,557	224	130	8,911	2,838	0.3	12.3
Egypt	187	158	10	13	181	29	0.0	-3.2
Iran	468	748	8	4	760	146	0.0	62.4
Iraq		53	4	19	76	10	0.0	
Israel	6,329	6,434	178	44	6,656	2,470	0.2	5.2
Kuwait	536	499	2	4	505	24	0.0	-5.8
Oman		99	3	8	110	14	0.0	
Palestine		31	3	6	40	4	0.0	
Qatar		62		3	65	14	0.0	
Saudi Arabia	75	79	5	2	86	13	0.0	14.7
United Arab Emirates		155			155	18	0.0	
Yemen		74	5	7	86	15	0.0	
Other Middle East	343	165	6	20	191	81	0.0	-44.3

Major data in 1993 - 2011

Years	Visitor Arrivals		Average Length of Stay	Hotel Occupancy Rate	Tourism Receipts
	number	change (%)	(Days)	(%)	Million (US\$)
1993	118,183	-	N/A	N/A	N/A
1994	176,617	49.4	N/A	N/A	N/A
1995	219,680	24.4	8.00	37.00	100
1996	260,489	18.6	7.50	40.00	118
1997	218,843	-16.0	6.40	30.00	103
1998	289,524	32.3	5.20	40.00	166
1999	367,743	27.0	5.50	44.00	190
2000	466,365	26.8	5.50	45.00	228
2001	604,919	29.7	5.50	48.00	304
2002	786,524	30.0	5.80	50.00	379
2003	701,014	-10.9	5.50	50.00	347
2004	1,055,202	50.5	6.30	52.00	578
2005	1,421,615	34.7	6.30	52.00	832
2006	1,700,041	19.6	6.50	54.79	1,049
2007	2,015,128	18.5	6.50	54.79	1,403
2008	2,125,465	5.5	6.65	62.68	1,595
2009	2,161,577	1.7	6.45	63.57	1,561
2010	2,508,289	16.0	6.45	65.74	1,786
2011	2,881,862	14.9	6.50	66.15	1,912

Average length of stay

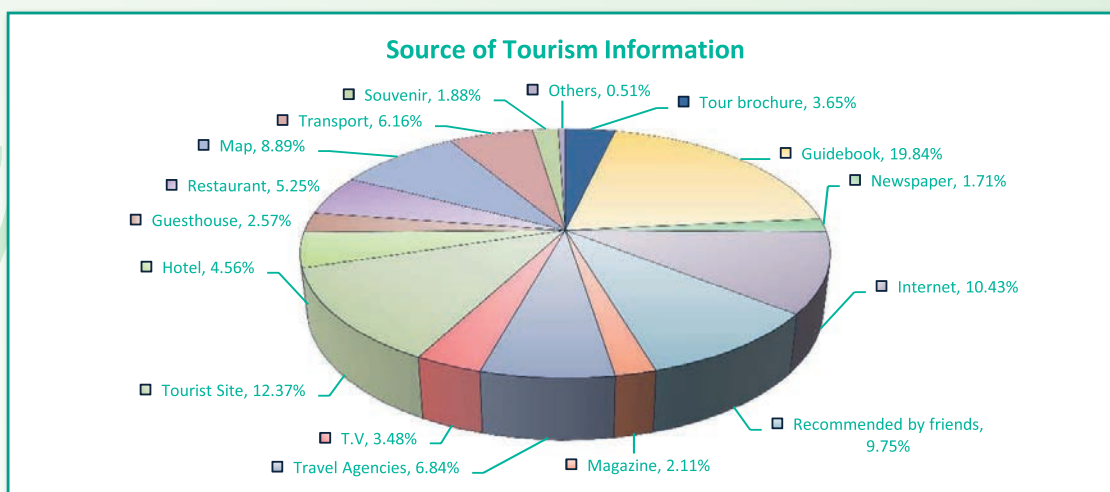
Kind of tourist	Phnom Penh	Siem Reap	Expenditure
	(Days)	(Days)	(US\$ / Day)
Group tour	4.35	3.67	
Individual	6.15	5.28	
Total	4.38	3.52	115.78

Average expenditure of individual

Items	Expenditure (US\$)
Accommodation	140.96
Food & beverage	75.10
Shopping	84.29
Local transport	71.42
Others	48.78
Average	420.53

Average expenditure of group tours

Items	Expenditure (US\$)
Package Tours	918.10
Shopping	143.56
Others	62.52
Total	1,124.18



Profile of international Tourist Arrivals to Cambodia in 2008 - 2011 (Tourism Survey 2011)

Tourist Characteristic	2008		2009		2010		2011	
	PNH	REP	PNH	REP	PNH	REP	PNH	REP
	(%)	(%)	(%)	(%)	(%)	(%)	(%)	(%)
Frequency of Visit	100.00	100.00	100.00	100.00	100.00	100.00	100.00	100.00
First Visit	79.00	58.54	64.80	68.13	80.54	93.11	82.47	78.65
Revisit	21.00	41.46	35.20	31.87	19.46	6.89	17.53	21.35
Travel Arrangement	100.00	100.00	100.00	100.00	100.00	100.00	100.00	100.00
Group Tour	55.73	69.18	53.67	53.00	31.14	47.78	35.19	62.32
Non Group Tour	44.27	30.82	46.33	47.00	68.86	52.22	64.81	37.68
Sex	100.00	100.00	100.00	100.00	100.00	100.00	100.00	100.00
Male	64.27	61.42	56.67	55.80	62.28	57.11	65.12	45.22
Female	35.73	38.58	43.33	44.20	37.72	42.89	34.88	54.78
Purpose of Visit	100.00	100.00	100.00	100.00	100.00	100.00	100.00	100.00
Leisure	95.19	78.62	83.20	87.60	65.27	86.00	73.14	88.11
Business	1.67	8.11	7.20	7.67	8.08	4.00	9.27	4.56
Official	0.26	4.72	1.67	1.06	3.59	2.22	4.32	2.34
Friend/Parents	0.57	5.83	1.93	0.87	15.87	5.56	9.72	3.64
Others	2.31	2.72	6.00	2.80	7.19	2.22	3.55	1.35
Age	100.00	100.00	100.00	100.00	100.00	100.00	100.00	100.00
Under - 19	10.87	13	12.23	13.18	11.08	12.56	13.97	12.29
20 - 29	26.08	19.46	20.45	21.81	21.45	23.81	28.42	27.35
30 - 39	22.54	19.42	20.35	20.98	11.08	13.45	23.73	27.97
40 - 49	17.83	17.89	18.21	19.74	28.50	29.73	21.61	26.52
50 - 59	14.21	18.43	18.56	17.23	19.34	17.46	9.11	3.34
60 - Over	8.47	11.8	10.20	7.06	8.55	2.99	3.16	2.53
Occupation	100.00	100.00	100.00	100.00	100.00	100.00	100.00	100.00
Employee	23.10	17.09	21.59	19.24	30.53	28.44	30.21	29.16
Business	22.21	16.42	24.25	18.31	12.57	12.44	23.36	13.98
Teacher	17.14	17.11	16.19	17.24	6.89	9.11	17.14	9.29
Retired	7.46	12.34	7.84	13.45	7.49	10.67	7.91	12.63
Official	5.35	10.21	6.82	9.14	2.10	2.44	6.52	5.34
Student	13.74	13.78	16.58	15.24	22.75	18.44	11.67	18.16
Others	11.00	13.05	6.73	7.38	17.67	18.46	3.19	11.44

Note:

PNH: Phnom Penh Area
REP: Siem Reap Area

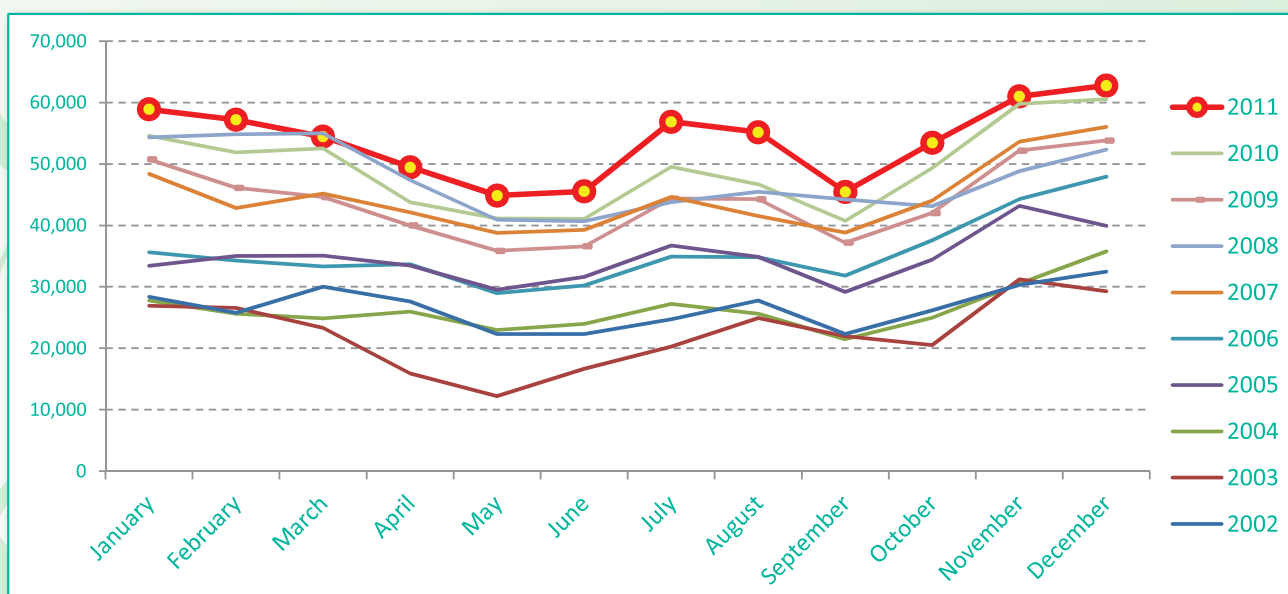
SECTION I

**PHNOM PENH INTERNATIONAL
AIRPORT**



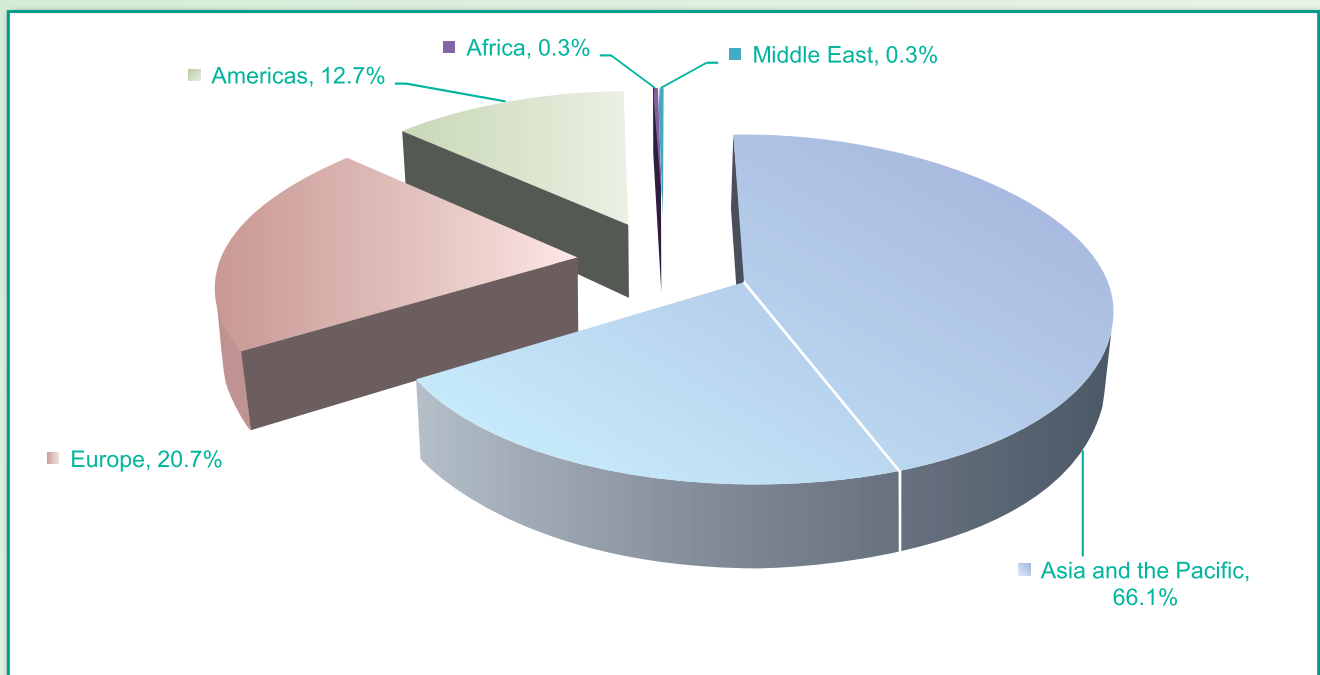
Int'l Tourist Arrivals to Phnom Penh International Airport by Months in 2002 - 2011

Months	2002	2003	2004	2005	2006	2007	2008	2009	2010	2011	change(%) 2011*/10
Q1	84,138	76,818	78,245	103,482	103,203	136,350	164,166	141,496	158,979	170,558	7.3
January	28,363	26,926	27,767	33,409	35,601	48,383	54,336	50,749	54,584	58,905	7.9
February	25,778	26,594	25,602	35,012	34,274	42,808	54,854	46,128	51,867	57,202	10.3
March	29,997	23,298	24,876	35,061	33,328	45,159	54,976	44,619	52,528	54,451	3.7
Q2	72,254	44,745	72,908	94,648	92,824	120,202	128,926	112,410	126,012	139,906	11.0
April	27,597	15,904	25,955	33,482	33,655	42,153	47,358	39,983	43,797	49,478	13.0
May	22,317	12,199	22,986	29,543	28,959	38,780	40,907	35,850	41,131	44,874	9.1
June	22,340	16,642	23,967	31,623	30,210	39,269	40,661	36,577	41,084	45,554	10.9
Q3	74,835	67,159	74,310	100,750	101,575	124,967	133,508	125,812	136,939	157,531	15.0
July	24,713	20,261	27,202	36,742	34,908	44,623	43,793	44,356	49,519	56,875	14.9
August	27,789	24,934	25,620	34,861	34,841	41,534	45,492	44,264	46,697	55,182	18.2
September	22,333	21,964	21,488	29,147	31,826	38,810	44,223	37,192	40,723	45,474	11.7
Q4	88,960	80,952	91,285	117,516	129,787	153,743	144,303	148,027	169,698	177,240	4.4
October	26,151	20,502	24,968	34,416	37,576	44,052	43,122	42,024	49,353	53,459	8.3
November	30,346	31,201	30,537	43,164	44,279	53,638	48,824	52,181	59,803	61,005	2.0
December	32,463	29,249	35,780	39,936	47,932	56,053	52,357	53,822	60,542	62,776	3.7
Total	320,187	269,674	316,748	416,396	427,389	535,262	570,903	527,745	591,628	645,235	9.1



Int'l Tourist Arrivals to Phnom Penh International Airport by Regions in 2011

Months	Asia and the Pacific	ASEAN	Europe	Americas	Africa	Middle East	Total
Q1	108,372	32,404	39,101	22,224	411	450	170,558
January	36,111	10,760	14,342	8,116	163	173	58,905
February	37,130	9,925	13,395	6,436	117	124	57,202
March	35,131	11,719	11,364	7,672	131	153	54,451
Q2	95,628	34,541	24,575	19,028	332	343	139,906
April	32,606	10,878	9,987	6,659	152	74	49,478
May	31,382	11,555	7,295	5,962	93	142	44,874
June	31,640	12,108	7,293	6,407	87	127	45,554
Q3	109,395	34,167	29,855	17,533	380	358	157,531
July	38,181	11,816	11,299	7,156	129	110	56,875
August	38,219	11,647	11,430	5,285	150	98	55,182
September	32,995	10,704	7,126	5,092	111	150	45,474
Q4	113,391	38,177	39,719	23,165	491	474	177,240
October	35,703	11,767	10,284	7,209	115	148	53,459
November	37,462	13,114	14,937	8,262	188	156	61,005
December	40,226	13,296	14,498	7,694	188	170	62,776
Total	426,786	139,289	133,250	81,950	1,614	1,625	645,235
share (%)	66.1%	21.6%	20.7%	12.7%	0.3%	0.3%	100.0%



International Tourist Arrivals to Phnom Penh International Airport by Country of Residence in 2011 (by Air only)

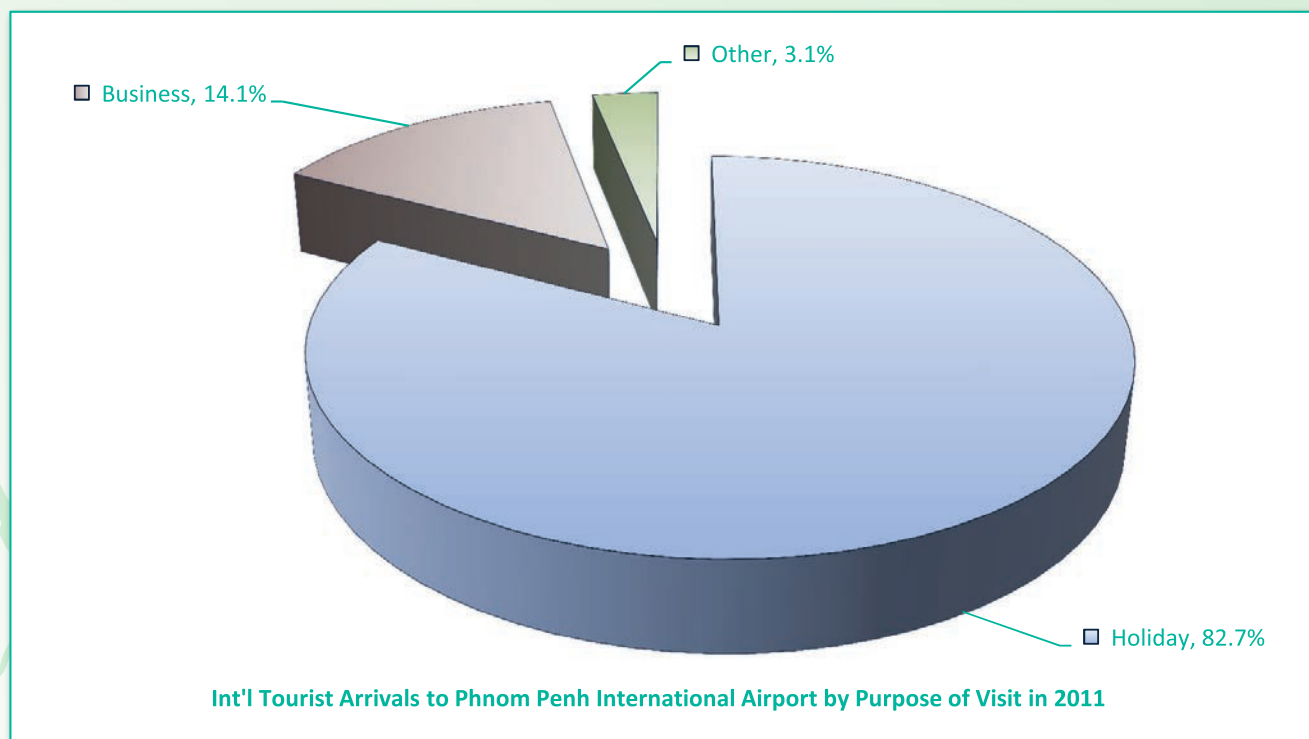
Regions Country of Residence	Int'l tourist arrivals													Total	Females	share (%)
	Jan	Feb	Mar	Apr	May	Jun	Jul	Aug	Sep	Oct	Nov	Dec				
GRAND TOTAL	58,905	57,202	54,451	49,478	44,874	45,554	56,875	55,182	45,474	53,459	61,005	62,776	645,235	225,843	100.0	
Southern Europe	1,223	1,255	846	606	512	415	868	1,448	664	752	1,200	1,174	10,963	3,777	1.7	
Croatia	26	10	9	8	7	5	15	10	8	7	26	11	142	34	0.0	
Greece	39	30	16	18	13	11	35	28	19	51	23	62	345	129	0.1	
Italy	784	623	434	296	202	183	384	754	246	324	599	653	5,482	1,872	0.8	
Portugal	43	59	65	41	24	15	33	54	43	44	50	65	536	206	0.1	
Serbia	34	26	5	4	6	8	7	7	5	9	19	14	144	50	0.0	
Slovenia	24	16	10	19	8	5	9	5	7	10	6	22	141	45	0.0	
Spain	194	171	212	167	178	144	356	488	185	277	277	253	2,902	1,102	0.4	
Turkey	79	320	95	53	74	44	29	102	151	30	200	94	1,271	339	0.2	
Other Europe	44	43	36	79	6	22	99	26	52	31	47	82	567	181	0.1	
Americas	8,116	6,436	7,672	6,659	5,962	6,407	7,156	5,285	5,092	7,209	8,262	7,694	81,950	31,977	12.7	
Argentina	24	12	27	29	14	6	23	18	6	15	43	21	238	86	0.0	
Brazil	83	43	30	43	76	38	35	22	28	31	69	49	547	217	0.1	
Canada	1,652	1,413	1,394	1,068	1,153	852	1,144	790	696	1,227	1,602	1,484	14,475	5,694	2.2	
Chile	33	37	62	17	6	2	9	27	6	7	7	245	458	156	0.1	
Colombia	19	13	19	31	6	37	17	15	11	20	33	20	241	106	0.0	
Costa Rica	1	2	4	3	2	1	4	3	4	4	2	3	33	9	0.0	
Ecuador		3	3	2	1	1	6	5	1	3	11	13	49	14	0.0	
Mexico	37	34	46	28	46	29	47	25	31	30	31	43	427	147	0.1	
Peru	11	5	7	7	3	7	5	7	6	4	16	10	88	32	0.0	
United States	6,212	4,837	6,049	5,402	4,651	5,417	5,789	4,353	4,266	5,845	6,415	5,758	64,994	25,397	10.1	
Uruguay	7	5	2	4				1					19	7	0.0	
Other Americas	37	32	29	25	4	17	77	19	37	23	33	48	381	112	0.1	
Africa	163	117	131	152	93	87	129	150	111	115	188	188	1,624	443	0.3	
Cameroon	6	2	10	2		3	3	5	6	2	2	3	44	10	0.0	
Congo	4	1						1	1	3	6		16	1	0.0	
Ghana	5	3	5	5	8	2	7	7	7	6	2	2	59	10	0.0	
Kenya	6	9	9	11	8	9	12	17	7	14	15	21	138	59	0.0	
Liberia		4		1							4		9	1	0.0	
Nigeria	20	26	20	50	20	26	22	23	37	21	29	33	327	45	0.1	
Sudan		2	1			2	1	3	1	3	12	1	26	8	0.0	
South Africa	111	59	68	77	54	40	74	86	42	56	102	119	888	281	0.1	
Uganda	2	3	3	1	1	1	1	4	3	2	8	2	30	9	0.0	
Other Africa	9	8	15	5	2	4	10	4	7	8	8	7	87	19	0.0	
Middle East	173	124	153	74	142	127	110	98	150	148	156	170	1,625	302	0.3	
Egypt	9	6	6	2	14	6	6	5	29	19	9	13	124	21	0.0	
Iran	10	17	17	2	16	19	8	5	12	4	5	11	126	52	0.0	
Iraq		1	2	2	7	23	5	2	8	1	11	2	64	16	0.0	
Israel	133	88	91	50	81	62	68	80	87	103	108	112	1,063	182	0.2	
Kuwait	3	2	10	2		1	5	1	2		2	4	32	4	0.0	
Oman	3		3	3	4	5	1			2			21	1	0.0	
Palestine	1	1	3	5	2	1			2	3	2	4	24		0.0	
Qatar	2		3		8	1	2				3	1	20	4	0.0	
Saudi Arabia	1	1	4	1	2	2	5	1	1	9	4	9	40	7	0.0	
United Arab Emirates							3		2		4		9	1	0.0	
Yemen	5	3	4	4	7	4	1	1	3	3	3	10	48	9	0.0	
Other Middle East	6	5	10	3	1	3	6	3	4	4	5	4	54	5	0.0	

Top Ten Generating markets in 2011

	China	U.S.A	Malaysia	Korea	France	Australia	Taiwan, China	United Kingdom	Thailand	Singapore
2010	95,643	64,064	47,169	50,109	43,599	37,162	37,920	25,775	24,783	24,119
2011	106,406	64,994	58,477	51,778	47,667	42,424	41,583	27,695	25,947	25,165
share(%)	16.49	10.07	9.06	8.02	7.39	6.57	6.44	4.29	4.02	3.90
change(%)	11.3	1.5	24.0	3.3	9.3	14.2	9.7	7.4	4.7	4.3

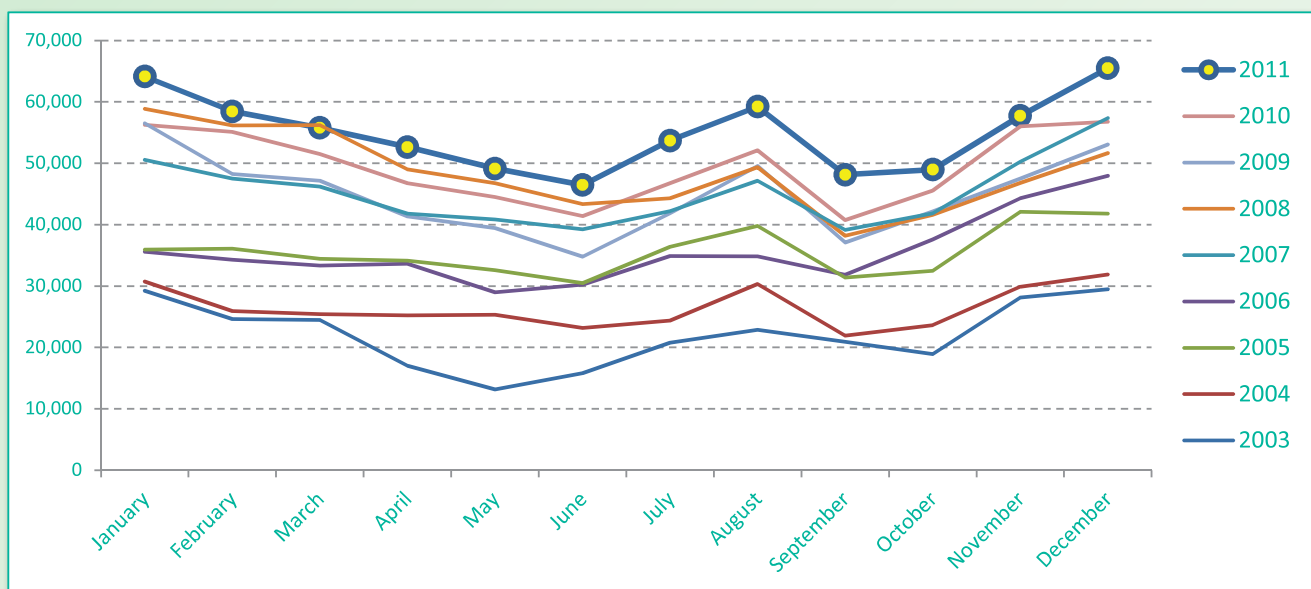
International Tourist Arrivals to Phnom Penh International Airport by Purpose of Visit in 2003 - 2011

Purpose of Visit	Int'l tourist arrivals									change (%) 2011*/10
	2003	2004	2005	2006	2007	2008	2009	2010	2011	
Total	269,674	316,748	416,396	427,389	535,262	570,903	527,745	591,628	645,233	9.1
Holiday	203,555	251,302	322,035	328,137	423,668	459,340	422,896	477,466	533,776	11.8
Business	52,725	46,563	61,919	74,940	86,751	90,282	81,881	90,302	91,223	1.0
Other	13,394	18,883	32,442	24,312	24,843	21,281	22,968	23,860	20,234	-15.2
Q1	76,818	78,245	103,482	103,203	136,350	164,166	141,496	158,979	170,558	7.3
Holiday	58,408	63,119	82,907	78,486	110,226	133,802	115,850	129,485	142,249	9.9
Business	16,546	11,082	13,629	18,323	20,045	24,736	20,343	23,563	23,277	-1.2
Other	1,864	4,044	6,946	6,394	6,079	5,628	5,303	5,931	5,032	-15.2
Q2	44,745	72,908	94,648	92,824	120,202	128,926	112,410	126,012	139,906	11.0
Holiday	30,397	57,436	72,916	68,236	92,732	99,893	86,273	97,701	112,361	15.0
Business	10,819	11,070	14,246	18,632	21,205	23,840	20,356	22,184	22,680	2.2
Other	3,529	4,402	7,486	5,956	6,265	5,193	5,781	6,127	4,865	-20.6
Q3	67,159	74,310	100,750	101,575	124,967	133,508	125,812	136,939	157,529	15.0
Holiday	47,841	58,650	75,690	77,098	96,906	107,264	98,668	109,381	128,916	17.9
Business	15,489	11,469	16,106	18,542	21,833	20,909	21,084	21,635	23,380	8.1
Other	3,829	4,191	8,954	5,935	6,228	5,335	6,060	5,923	5,233	-11.6
Q4	80,952	91,285	117,516	129,787	153,743	144,303	148,027	169,698	177,240	4.4
Holiday	66,909	72,097	90,522	104,317	123,804	118,381	122,105	140,899	150,250	6.6
Business	9,871	12,942	17,938	19,443	23,668	20,797	20,098	22,920	21,886	-4.5
Other	4,172	6,246	9,056	6,027	6,271	5,125	5,824	5,879	5,104	-13.2



Int'l Tourist Departures from Phnom Penh International Airport by Months in 2003 - 2011

Months	Int'l Tourists Departure									change (%)
	2003	2004	2005	2006	2007	2008	2009	2010	2011	2011*10
Q1	78,287	82,085	106,462	103,203	144,282	171,257	151,938	162,931	178,353	9.5
January	29,201	30,731	35,914	35,601	50,577	58,882	56,536	56,288	64,141	14.0
February	24,605	25,940	36,100	34,274	47,524	56,140	48,257	55,117	58,444	6.0
March	24,481	25,414	34,448	33,328	46,181	56,235	47,145	51,526	55,768	8.2
Q2	45,978	73,660	97,210	92,824	121,838	139,102	115,543	132,678	148,240	11.7
April	17,029	25,201	34,146	33,655	41,775	49,002	41,362	46,771	52,650	12.6
May	13,166	25,313	32,590	28,959	40,819	46,736	39,416	44,500	49,130	10.4
June	15,783	23,146	30,474	30,210	39,244	43,364	34,765	41,407	46,460	12.2
Q3	64,520	76,598	107,571	101,575	128,504	131,832	128,455	139,581	161,037	15.4
July	20,767	24,381	36,395	34,908	42,213	44,297	41,831	46,736	53,686	14.9
August	22,851	30,316	39,776	34,841	47,143	49,354	49,540	52,122	59,221	13.6
September	20,902	21,901	31,400	31,826	39,148	38,181	37,084	40,723	48,130	18.2
Q4	76,474	85,357	116,385	129,787	149,451	140,045	142,702	158,314	172,192	8.8
October	18,913	23,614	32,467	37,576	41,821	41,588	42,152	45,539	48,973	7.5
November	28,101	29,876	42,101	44,279	50,276	46,814	47,484	56,030	57,721	3.0
December	29,460	31,867	41,817	47,932	57,354	51,643	53,066	56,745	65,498	15.4
Total	265,259	317,700	427,628	427,389	544,075	582,236	538,638	593,504	659,822	11.2



SECTION II

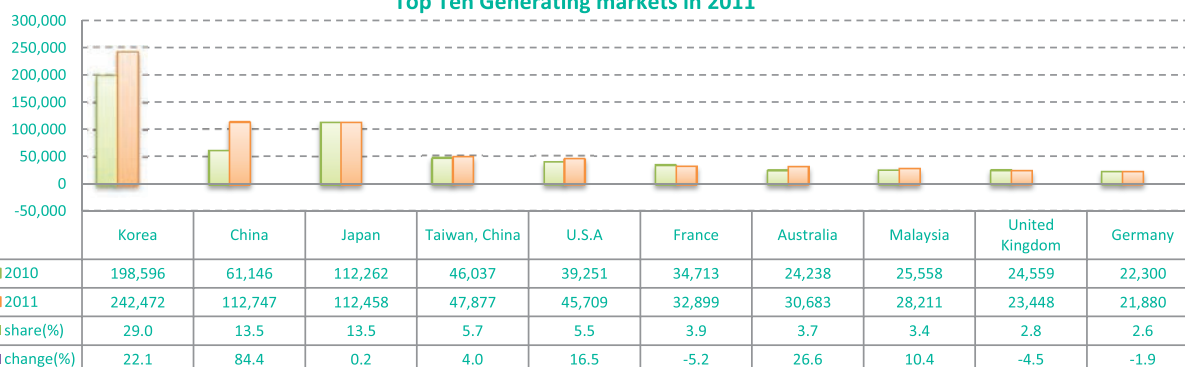
**SIEM REAP INTERNATIONAL
AIRPORT**



International Tourist Arrivals to Siem Reap International Airport by Country of Residence in 2011 (by Air only)

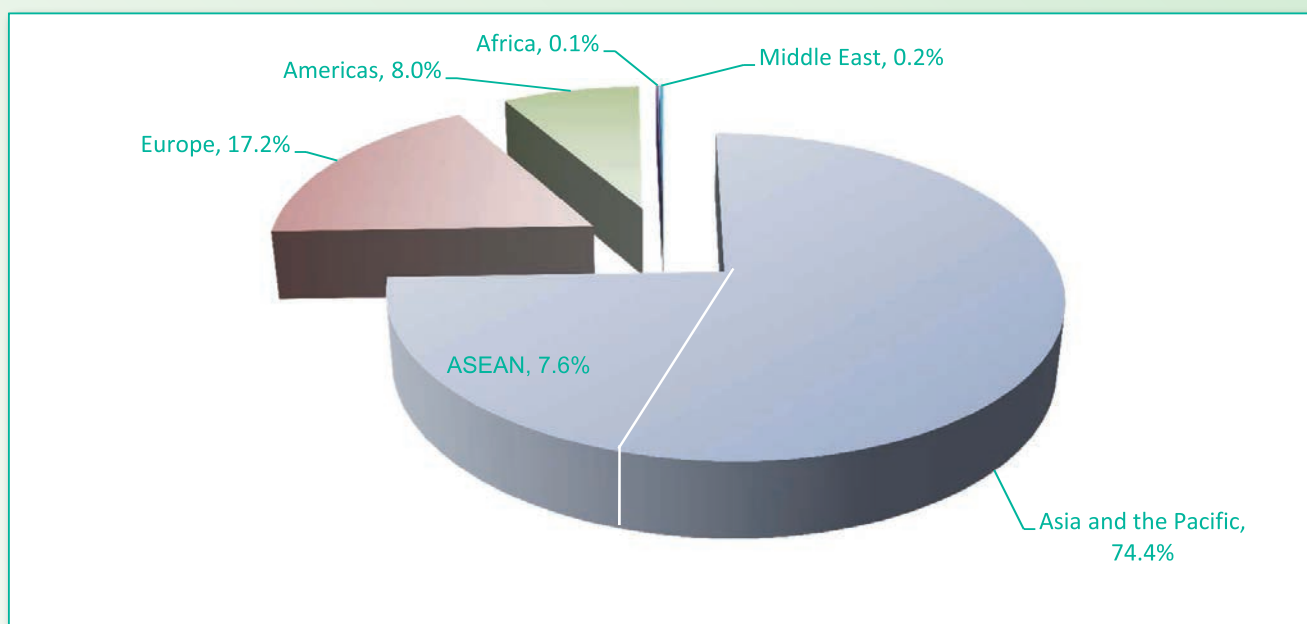
Regions Country of Residence	Int'l tourist arrivals												Total	Females	share (%)
	Jan	Feb	Mar	Apr	May	Jun	Jul	Aug	Sep	Oct	Nov	Dec			
GRAND TOTAL	93,276	87,806	75,789	57,187	45,395	44,456	59,467	68,484	49,805	65,363	88,410	99,734	835,172	451,717	100.0
Southern Europe	2,084	1,314	1,302	1,226	720	803	1,789	4,652	1,742	2,302	2,793	1,980	22,707	11,343	2.7
Croatia	25	15	5	8	1	2	9	4	3	27	18	32	149	72	0.0
Greece	36	83	30	46	9	4	15	52	11	27	12	32	357	181	0.0
Italy	1,301	660	531	322	176	177	291	1,323	192	298	891	1,012	7,174	3,352	0.9
Portugal	111	78	152	134	60	69	92	268	95	212	208	94	1,573	823	0.2
Serbia	10	5	20	9	3	2	3	2	7	6	8	14	89	41	0.0
Slovenia	18	11	0	27	7	6	8	13	7	1	6	51	155	72	0.0
Spain	486	327	495	621	449	531	1,350	2,906	1,416	1,693	1,248	703	12,225	6,303	1.5
Turkey	97	135	69	59	15	12	21	84	11	38	402	42	985	499	0.1
Other Europe	80	305	153	158	184	62	56	21	27	49	51	98	1,244	262	0.1
Americas	7,702	7,768	6,634	5,688	3,553	3,536	4,524	3,199	2,871	5,652	7,289	8,455	66,871	33,589	8.0
Argentina	329	186	192	162	80	47	70	57	52	96	162	134	1,567	818	0.2
Brazil	312	193	158	140	121	95	126	85	116	266	237	202	2,051	1,103	0.2
Canada	1,337	1,187	1,206	918	539	445	630	493	379	1,006	1,507	1,260	10,907	5,572	1.3
Chile	106	172	106	98	85	41	82	32	43	88	79	123	1,055	558	0.1
Colombia	65	906	34	56	47	42	83	44	27	52	67	44	1,467	753	0.2
Costa Rica	13	6	5	36	11	0	11	7	5	5	5	9	113	71	0.0
Ecuador	9	2	1	7	12	9	5	5	8	9	10	7	84	44	0.0
Mexico	112	86	242	278	185	180	311	117	199	263	280	283	2,536	1,284	0.3
Peru	12	5	11	31	35	9	20	6	35	34	12	14	224	117	0.0
United States	5,349	4,789	4,582	3,833	2,148	2,614	3,145	2,272	1,987	3,792	4,896	6,302	45,709	22,907	5.5
Uruguay	5	2	17	6	176	8	12	64	3	3	6	4	306	190	0.0
Other Americas	53	234	80	123	114	46	29	17	17	38	28	73	852	172	0.1
Africa	108	72	92	83	40	61	105	54	103	77	104	257	1,156	545	0.1
Cameroon	0	0	2	0	1	2	0	0	1		1		7	2	0.0
Congo	0	0	0	0	3	0	0	0	0		1		4		0.0
Ghana	9	0	12	1	0	3	0	0	0	2		1	28	14	0.0
Kenya	2	3	2	14	5	4	1	5	2	8	2	8	56	31	0.0
Liberia	0	0	0	0	0	0	0	0	1				1		0.0
Nigeria	1	2	2	0	3	2	2	1	5	4	4	9	35	10	0.0
Sudan	2	0	1	0	2	1	0	0	0	1		2	9	1	0.0
South Africa	79	42	46	62	21	37	94	42	70	57	93	227	870	437	0.1
Uganda	0	0	0	1	0	0	0	4	21			1	27	16	0.0
Other Africa	15	25	27	5	5	12	8	2	3	5	3	9	119	34	0.0
Middle East	266	292	200	145	46	54	83	121	91	253	96	228	1,875	882	0.2
Egypt	0	4	0	1	2	2	4	3	0	1	2	10	29	8	0.0
Iran	10	9	2	14	3	4	0	6	10	7	6	2	73	32	0.0
Iraq	0	0	0	1	0	1	0	0	4				6	1	0.0
Israel	236	256	169	116	34	33	72	109	69	241	85	208	1,628	798	0.2
Kuwait	2	0	2	0	2	1	1	0	1	2	1	2	14	5	0.0
Oman	2	0	1	4	2	0	1	0	1				11	5	0.0
Palestine	0	0	3	0	0	0	0	0	2				5	2	0.0
Qatar	0	0	0	0	0	0	0	0	0				0		0.0
Saudi Arabia	0	0	2	4	0	0	0	0	2		1		9	6	0.0
United Arab Emirates	2	0	5	2	0	0	0	0	0				9	5	0.0
Yemen	2	0	2	0	1	3	1	2	0			3	14	1	0.0
Other Middle East	12	23	14	3	2	10	4	1	2	2	1	3	77	19	0.0

Top Ten Generating markets in 2011



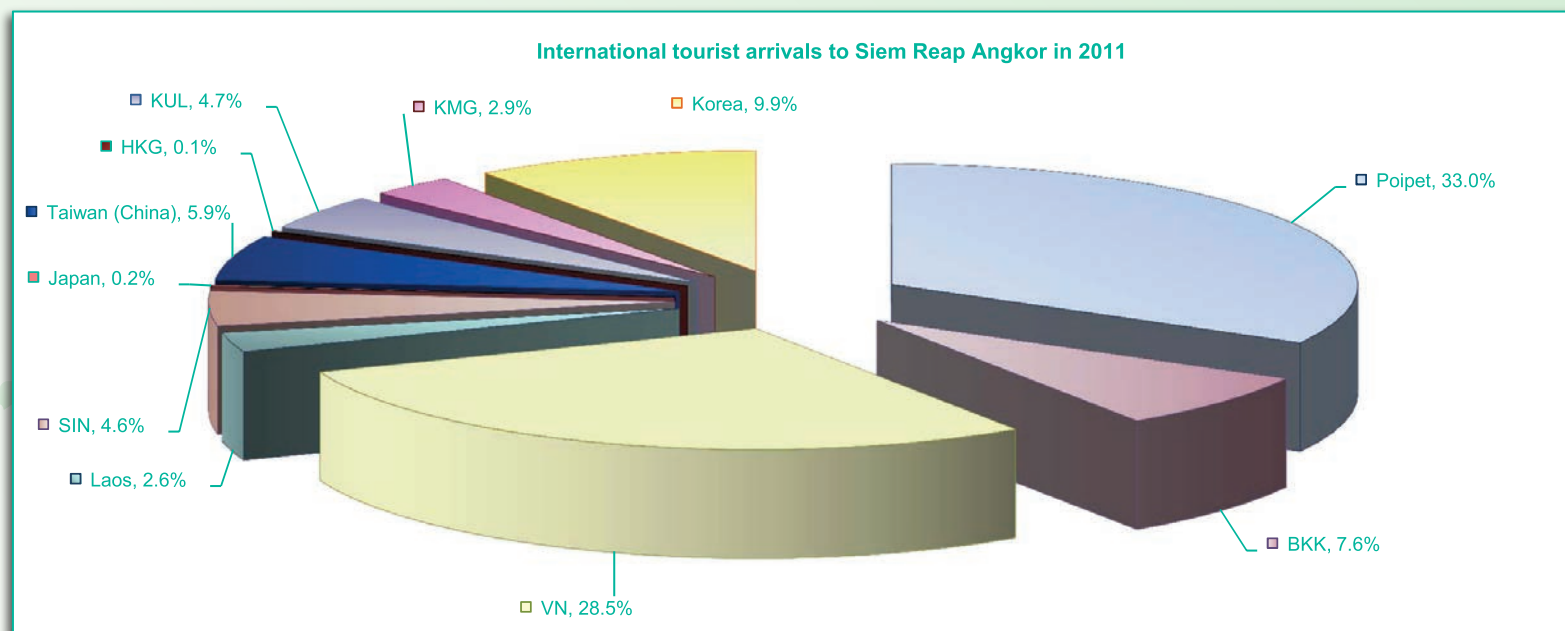
International Tourist arrivals to Siem Reap International Airport by Regions in 2011

Months	Asia and the Pacific	ASEAN	Europe	Americas	Africa	Middle East	Total
Q1	185,817	13,312	47,920	22,104	272	758	256,871
January	68,550	3,636	16,650	7,702	108	266	93,276
February	63,557	4,455	16,117	7,768	72	292	87,806
March	53,710	5,221	15,153	6,634	92	200	75,789
Q2	113,031	15,587	20,801	12,777	184	245	147,038
April	40,247	4,295	11,024	5,688	83	145	57,187
May	36,119	5,450	5,637	3,553	40	46	45,395
June	36,665	5,842	4,140	3,536	61	54	44,456
Q3	139,456	15,284	27,149	10,594	262	295	177,756
July	45,931	5,047	8,824	4,524	105	83	59,467
August	52,660	5,629	12,450	3,199	54	121	68,484
September	40,865	4,608	5,875	2,871	103	91	49,805
Q4	183,411	19,240	47,685	21,396	438	577	253,507
October	47,584	4,967	11,797	5,652	77	253	65,363
November	61,654	6,877	19,267	7,289	104	96	88,410
December	74,173	7,396	16,621	8,455	257	228	99,734
Total	621,715	63,423	143,555	66,871	1,156	1,875	835,172
share (%)	74.4%	7.6%	17.2%	8.0%	0.1%	0.2%	100.0%



International Tourist Arrivals to Siem Reap Angkor by Mode of Transport in 2011

Months	2010											2011											change (%)		
	Direct flight											Direct flight													
	Poipet	BKK	VN	Laos	SIN	Japan	Taiwan (China)	HKG	KUL	KMG	Korea	Total	Poipet	BKK	VN	Laos	SIN	Japan	Taiwan (China)	HKG	KUL	KMG		Korea	Total
Jan	32,191	12,906	31,143	2,668	4,167	453	4,311		4,606		12,157	104,602	43,830	11,459	39,595	4,001	4,332		6,015		4,636	5,753	17,485	137,106	31.1
Feb	28,907	12,085	28,151	3,313	4,066	216	6,221		4,567	1,555	9,854	98,935	35,356	10,895	35,186	3,699	4,804	452	12,142		4,923		15,705	123,162	24.5
Mar	29,175	10,847	34,793	3,057	4,374	211	3,644		4,546		8,616	99,263	31,191	8,123	35,891	2,991	4,847		5,001	128	4,655	2,851	11,302	106,980	7.8
Apr	20,340	6,344	27,873	1,860	3,832		4,101		4,482		5,186	74,018	30,874	6,209	25,729	2,125	4,115		5,921	622	4,666	1,342	6,458	88,061	19.0
May	22,887	3,911	20,480	526	3,996		3,483		4,813		5,202	65,298	27,064	4,179	18,384	1,547	3,953		4,862		4,318	1,297	6,855	72,459	11.0
Jun	11,226	3,147	18,102	1,003	3,883		3,084		4,549		4,998	49,992	28,522	4,128	15,870	1,001	4,779	72	5,705		4,203	1,340	7,358	72,978	46.0
Jul	30,108	5,425	19,863	1,849	3,866		6,272		4,517		6,246	78,146	34,503	7,048	21,347	1,924	4,589		8,692		4,875	3,433	7,389	93,800	20.0
Aug	27,935	6,550	23,754	2,209	3,778		8,796		5,635		7,367	86,024	36,661	7,588	28,792	2,685	4,575	211	7,514		5,187	3,802	8,130	105,145	22.2
Sep	24,825	4,508	19,767	1,266	3,798	221	3,185		5,106	2,823	4,514	70,013	35,486	5,475	24,034	1,495	4,373	292	3,850		3,872		6,414	85,291	21.8
Oct	29,524	6,214	28,399	2,019	4,632	287	3,371	172	5,093	2,910	5,351	87,972	32,307	7,621	30,030	2,294	5,191	323	3,905		4,528	3,372	8,099	97,670	11.0
Nov	33,738	10,498	35,776	4,081	5,495	2,190	3,927		5,544	2,408	9,028	112,685	31,096	9,706	39,178	5,012	5,769	377	4,594		5,925	5,699	12,150	119,506	6.1
Dec	31,461	10,183	34,703	3,959	5,330	2,124	2,407		5,378	3,739	8,757	108,041	44,903	12,213	41,854	3,651	6,351	582	5,701		6,415	7,338	15,629	144,637	33.9
Total	322,317	92,618	322,804	27,810	51,217	5,702	52,802	172	58,836	13,435	87,276	1,034,989	411,793	94,644	355,890	32,425	57,678	2,309	73,902	750	58,203	36,227	122,974	1,246,795	20.5



International Tourist Arrivals to Siem Reap International Airport in 2011

Months	BKK - REP			VN - REP			SIN - REP			VTE - REP			JAP - REP		
	2010	2011	change (%) 11*/10	2010	2011	change (%) 11*/10	2010	2011	change (%) 11*/10	2010	2011	change (%) 11*/10	2010	2011	change (%) 11*/10
Q1	35,838	30,477	-15.0	94,087	110,672	17.6	12,607	13,983	10.9	9,038	10,691	18.3	880	452	-48.6
January	12,906	11,459	-11.2	31,143	39,595	27.1	4,167	4,332	4.0	2,668	4,001	50.0	453		-100.0
February	12,085	10,895	-9.8	28,151	35,186	25.0	4,066	4,804	18.2	3,313	3,699	11.7	216	452	109.3
March	10,847	8,123	-25.1	34,793	35,891	3.2	4,374	4,847	10.8	3,057	2,991	-2.2	211		
Q2	13,402	24,904	85.8	66,455	59,983	-9.7	11,711	12,847	9.7	3,389	4,673	37.9	0	72	-
April	6,344	14,516	128.8	27,873	25,729	-7.7	3,832	4,115	7.4	1,860	2,125	14.2			
May	3,911	6,209	58.8	20,480	18,384	-10.2	3,996	3,953	-1.1	526	1,547	194.1		72	
June	3,147	4,179	32.8	18,102	15,870	-12.3	3,883	4,779	23.1	1,003	1,001	-0.2			
Q3	16,483	20,111	22.0	63,384	74,173	17.0	11,442	13,537	18.3	5,324	6,104	14.7	221	503	-
July	5,425	7,048	29.9	19,863	21,347	7.5	3,866	4,589	18.7	1,849	1,924	4.1			
August	6,550	7,588	15.8	23,754	28,792	21.2	3,778	4,575	21.1	2,209	2,685	21.5		211	
September	4,508	5,475	21.5	19,767	24,034	21.6	3,798	4,373	15.1	1,266	1,495	18.1	221	292	32.1
Q4	26,895	29,540	9.8	98,878	111,062	12.3	15,457	17,311	12.0	10,059	10,957	8.9	4,601	1,282	-
October	6,214	7,621	22.6	28,399	30,030	5.7	4,632	5,191	12.1	2,019	2,294	13.6	287	323	
November	10,498	9,706	-7.5	35,776	39,178	9.5	5,495	5,769	5.0	4,081	5,012	22.8	2,190	377	
December	10,183	12,213	19.9	34,703	41,854	20.6	5,330	6,351	19.2	3,959	3,651	-7.8	2,124	582	-72.6
Total	92,618	105,032	13.4	322,804	355,890	10.2	51,217	57,678	12.6	27,810	32,425	16.6	5,702	2,309	-59.5

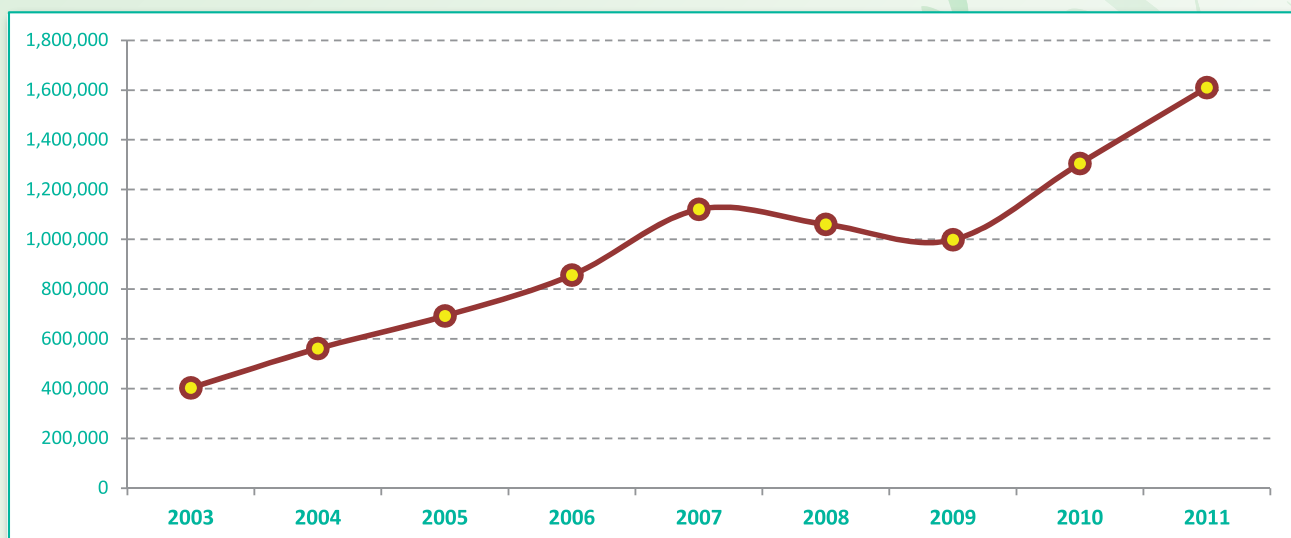
Months	China - REP			HKG - REP			KUL - REP			KMG - REP			Korea - REP		
	2010	2011	change (%) 11*/10	2010	2011	change (%) 11*/10	2010	2011	change (%) 11*/10	2010	2011	change (%) 11*/10	2010	2011	change (%) 11*/10
Q1	14,176	23,158	63.4	0	128		13,719	14,214	3.6	1,555	8,604	453.3	30,627	44,492	45.3
January	4,311	6,015	39.5				4,606	4,636	0.7		5,753		12,157	17,485	43.8
February	6,221	12,142	95.2				4,567	4,923	7.8	1,555			9,854	15,705	59.4
March	3,644	5,001	37.2		128		4,546	4,655	2.4		2,851		8,616	11,302	31.2
Q2	10,668	16,488	54.6	0	622	-	13,844	13,187	-4.7	0	3,979		15,386	20,671	34.3
April	4,101	5,921	44.4		622		4,482	4,666	4.1		1,342		5,186	6,458	24.5
May	3,483	4,862	39.6				4,813	4,318	-10.3		1,297		5,202	6,855	31.8
June	3,084	5,705	85.0				4,549	4,203	-7.6		1,340		4,998	7,358	47.2
Q3	18,253	20,056	9.9	0	0	-	15,258	13,934	-8.7	2,823	7,235	156.3	18,127	21,933	21.0
July	6,272	8,692	38.6				4,517	4,875	7.9		3,433		6,246	7,389	18.3
August	8,796	7,514	-14.6				5,635	5,187	-8.0		3,802		7,367	8,130	10.4
September	3,185	3,850	20.9				5,106	3,872	-24.2	2,823		-100.0	4,514	6,414	42.1
Q4	9,705	14,200	46.3	172	0	-	16,015	16,868	5.3	9,057	16,409	81.2	23,136	35,538	53.6
October	3,371	3,905	15.8	172			5,093	4,528	-11.1	2,910	3,372	15.9	5,351	8,099	51.4
November	3,927	4,594	17.0				5,544	5,925	6.9	2,408	5,699		9,028	12,150	34.6
December	2,407	5,701	136.9				5,378	6,415	19.3	3,739	7,338		8,757	15,289	74.6
Total	52,802	73,902	40.0	172	750	336.0	58,836	58,203	-1.1	13,435	36,227	169.6	87,276	122,634	40.5

International Tourist Arrivals to Siem Reap International Airport by Purpose of Visit in 2004 - 2011

Purpose of Visit	Int'l tourist arrivals								change (%) 2011*/10
	2004	2005	2006	2007	2008	2009	2010	2011	
Total	309,373	440,125	599,675	761,251	668,504	583,984	712,672	835,172	17.2
Holiday	297,279	426,807	591,474	751,537	656,776	574,571	704,254	826,441	17.3
Business	2,746	2,821	2,778	5,699	7,063	4,720	4,658	5,316	14.1
Other	9,348	10,497	5,423	4,015	4,665	4,693	3,760	3,415	-9.2
Q1	79,693	128,925	172,188	237,244	237,857	193,717	212,527	256,871	20.9
Holiday	76,489	124,476	169,285	235,542	234,498	191,123	210,483	254,826	21.1
Business	407	661	612	940	2,036	1,533	1,111	1,296	16.7
Other	2,797	3,788	2,291	762	1,323	1,061	933	749	-19.7
Q2	49,897	75,133	109,623	155,423	133,099	108,811	134,855	147,038	9.0
Holiday	47,142	72,383	108,051	153,170	130,453	106,707	132,877	144,934	9.1
Business	873	730	740	1,495	1,741	1,079	1,222	1,187	-2.9
Other	1,882	2,020	832	758	905	1,025	756	917	21.3
Q3	69,564	102,083	122,627	153,556	125,682	121,361	151,315	177,756	17.5
Holiday	66,452	99,429	120,921	150,950	123,302	119,398	149,214	175,669	17.7
Business	906	607	758	1,691	1,526	978	1,123	1,308	16.5
Other	2,206	2,047	948	915	854	985	978	779	-20.3
Q4	110,219	133,984	195,237	215,028	171,866	160,095	213,975	253,507	18.5
Holiday	107,196	130,519	193,217	211,875	168,523	157,343	211,680	251,012	18.6
Business	560	823	668	1,573	1,760	1,130	1,202	1,525	26.9
Other	2,463	2,642	1,352	1,580	1,583	1,622	1,093	970	-11.3

International Tourist Arrivals to Siem Reap Angkor by Months in 2003 - 2011

Months	2003	2004	2005	2006	2007	2008	2009	2010	2011	change(%) 2011*/10
Q1	127,838	157,388	216,151	241,785	399,812	356,390	298,164	366,102	435,972	19.1
January	48,507	64,174	73,702	86,279	185,163	121,975	105,701	122,163	166,354	36.2
February	44,092	51,416	77,466	81,787	111,459	120,657	94,241	126,057	146,593	16.3
March	35,239	41,798	64,983	73,719	103,190	113,758	98,222	117,882	123,025	4.4
Q2	39,489	85,759	129,154	153,575	215,634	222,404	204,864	274,842	348,537	26.8
April	17,635	31,062	52,651	64,765	85,769	91,105	86,465	109,799	129,953	18.4
May	10,173	27,590	39,860	45,516	68,292	72,447	62,175	89,902	115,153	28.1
June	11,681	27,107	36,643	43,294	61,573	58,852	56,224	75,141	103,431	37.6
Q3	85,497	127,233	154,099	186,740	188,342	209,005	218,202	287,229	382,595	33.2
July	20,172	35,979	48,913	56,421	62,976	65,896	71,282	95,427	122,954	28.8
August	30,594	48,130	63,853	74,365	69,196	78,254	80,220	106,502	140,769	32.2
September	34,731	43,124	41,333	55,954	56,170	64,855	66,700	85,300	118,872	39.4
Q4	149,956	190,567	192,600	274,057	316,798	272,071	276,854	377,083	442,972	17.5
October	34,350	48,720	54,344	71,086	86,833	79,200	77,553	108,241	122,450	13.1
November	55,845	67,722	67,704	95,058	107,330	95,984	90,472	136,468	148,656	8.9
December	59,761	74,125	70,552	107,913	122,635	96,887	108,829	132,374	171,866	29.8
Total	402,780	560,947	692,004	856,157	1,120,586	1,059,870	998,084	1,305,256	1,610,076	23.4



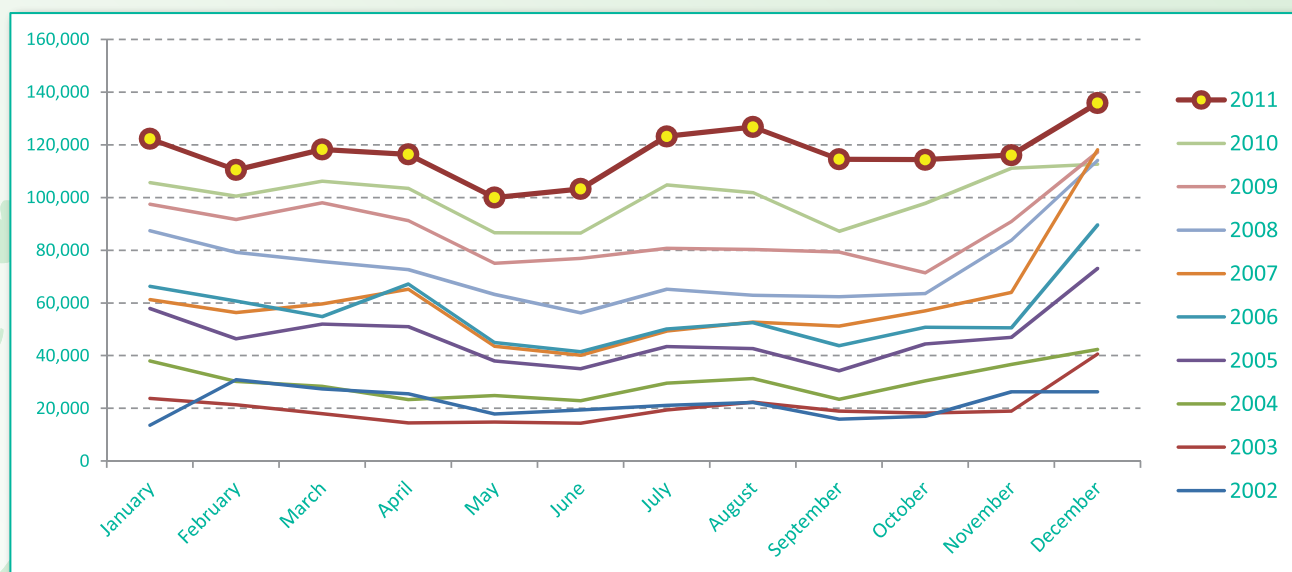
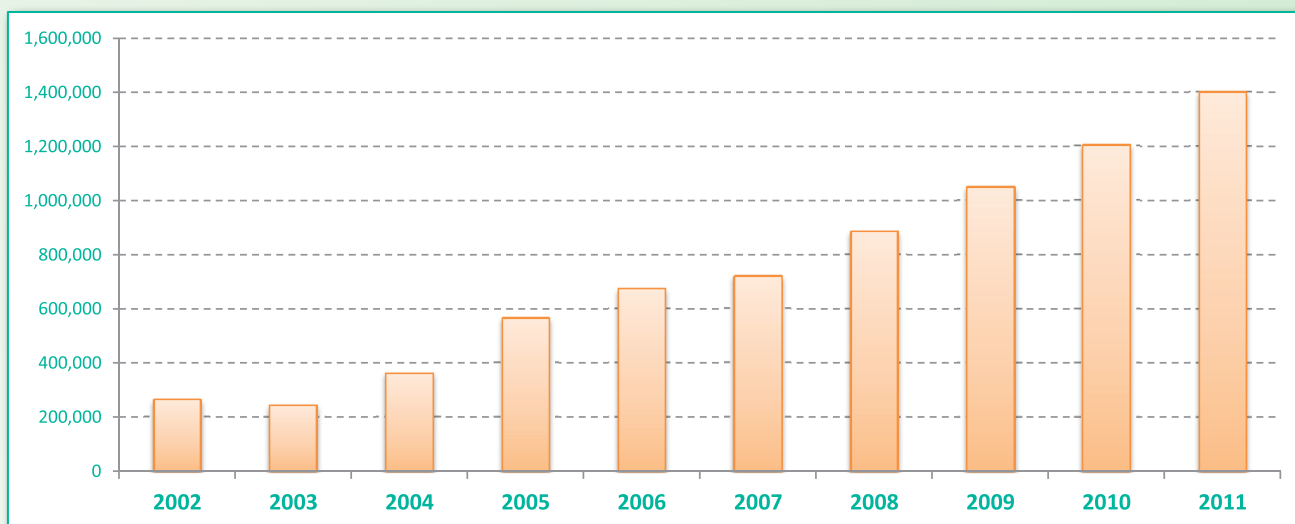
SECTION III

**INTERNATIONAL BORDER CHECK
POINTS**



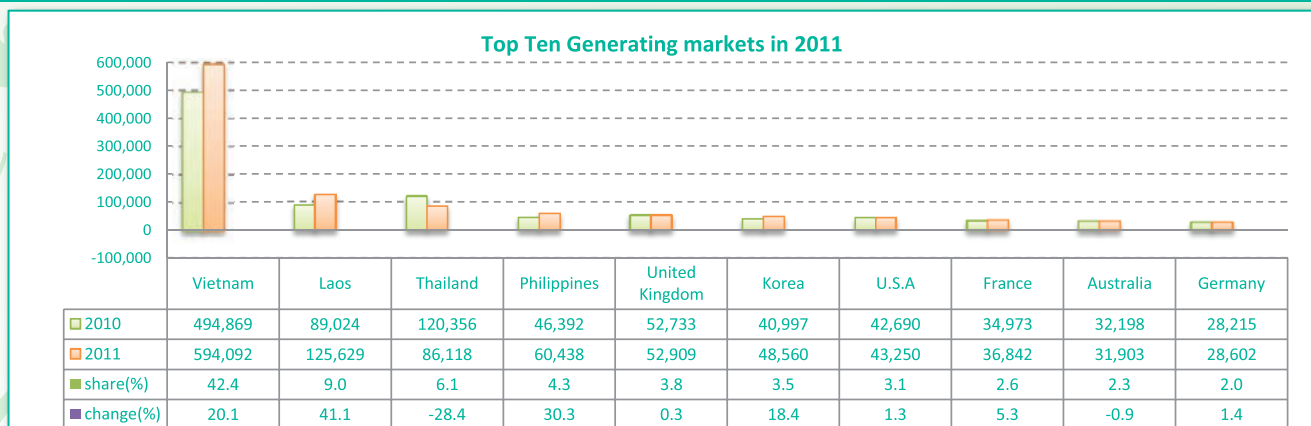
International Tourist Arrivals to Cambodia by Land and Waterway in 2002 - 2011

Months	2002	2003	2004	2005	2006	2007	2008	2009	2010	2011	change(%) 2011*/10
Q1	71,897	63,007	96,499	156,263	181,914	177,219	242,182	287,075	312,186	351,038	12.4
January	13,607	23,717	37,969	57,895	66,335	61,309	87,370	97,453	105,595	122,290	15.8
February	30,889	21,318	30,188	46,414	60,758	56,296	79,166	91,667	100,459	110,491	10.0
March	27,401	17,972	28,342	51,954	54,821	59,614	75,646	97,955	106,132	118,257	11.4
Q2	62,752	43,633	70,997	123,980	153,640	148,911	192,006	243,009	276,597	319,618	15.6
April	25,528	14,514	23,345	51,007	67,183	65,234	72,598	91,170	103,490	116,367	12.4
May	17,817	14,779	24,812	37,973	45,007	43,567	63,211	74,979	86,622	99,989	15.4
June	19,407	14,340	22,840	35,000	41,450	40,110	56,197	76,860	86,485	103,262	19.4
Q3	59,313	60,655	84,257	120,384	146,418	153,292	190,503	240,249	293,770	364,473	24.1
July	21,135	19,350	29,521	43,496	50,092	49,312	65,207	80,700	104,792	123,185	17.6
August	22,266	22,376	31,316	42,679	52,546	52,732	62,914	80,283	101,777	126,763	24.5
September	15,912	18,929	23,420	34,209	43,780	51,248	62,382	79,266	87,201	114,525	31.3
Q4	69,584	77,747	109,485	164,467	191,005	239,193	261,367	279,515	321,436	366,326	14.0
October	17,018	18,204	30,476	44,475	50,798	57,039	63,543	71,434	97,714	114,368	17.0
November	26,297	18,963	36,709	46,946	50,587	64,016	83,758	90,844	111,142	116,124	4.5
December	26,269	40,580	42,300	73,046	89,620	118,138	114,066	117,237	112,580	135,834	20.7
Total	263,546	245,042	361,238	565,094	672,977	718,615	886,058	1,049,848	1,203,989	1,401,455	16.4



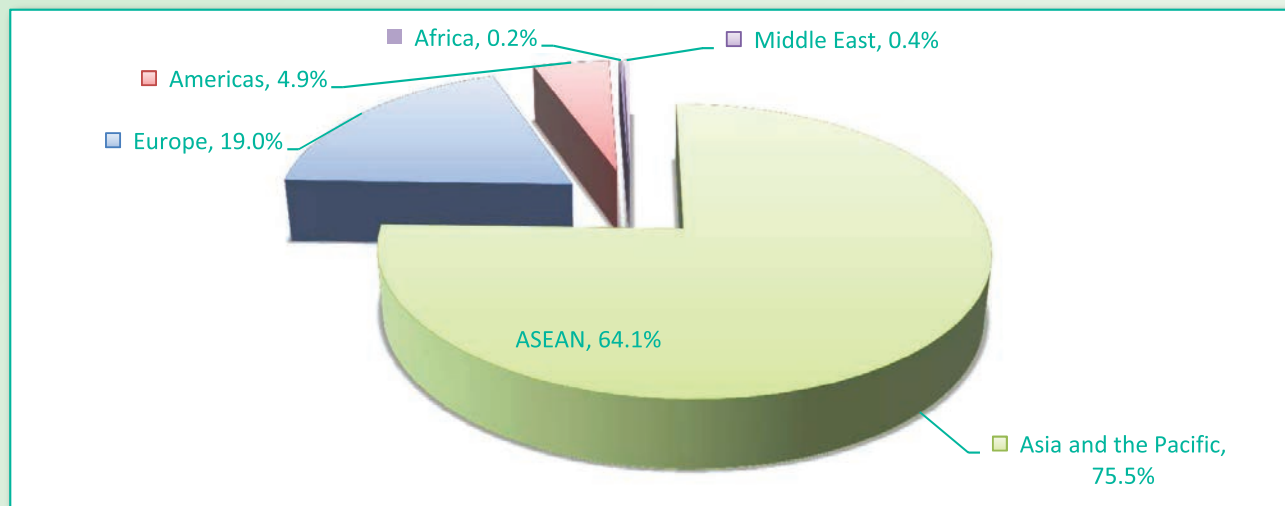
International Tourist Arrivals to Cambodia by Country of Residence in 2011

Regions Country of Residence	Int'l tourist arrivals												Total	share (%)
	Jan	Feb	Mar	Apr	May	Jun	Jul	Aug	Sep	Oct	Nov	Dec		
GRAND TOTAL	122,290	110,491	118,257	116,367	99,989	103,262	123,185	126,763	114,525	114,368	116,124	135,834	1,401,455	100.0
Southern Europe	2,193	1,657	1,409	1,041	699	671	1,474	3,372	1,034	1,267	2,053	1,766	18,636	1.3
Croatia	43	30	25	10	7	5	11	17	3	19	31	40	241	0.0
Greece	73	59	73	32	24	19	34	38	23	28	22	41	466	0.0
Italy	1,259	1,026	777	428	288	235	457	1,365	307	418	885	736	8,181	0.6
Portugal	92	79	77	84	31	57	70	155	59	58	114	96	972	0.1
Serbia	19	31	13	15	3	7	15	14	6	18	18	16	175	0.0
Slovenia	90	45	32	49	15	10	38	25	20	72	91	89	576	0.0
Spain	471	277	349	364	274	292	779	1,689	563	595	736	607	6,996	0.5
Turkey	146	110	63	59	57	46	70	69	53	59	156	141	1,029	0.1
Other Europe	654	312	103	1,569	101	43	45	193	84	23	9	404	3,540	0.3
Americas	8,025	7,046	6,717	6,488	4,217	4,508	5,452	6,415	3,660	4,152	5,206	6,793	68,679	4.9
Argentina	262	135	190	93	73	76	90	1,954	192	83	126	144	3,418	0.2
Brazil	174	78	76	65	80	62	68	69	72	71	74	129	1,018	0.1
Canada	2,271	2,087	2,087	1,599	1,087	1,051	1,207	1,048	600	914	1,469	1,660	17,080	1.2
Chile	118	170	107	90	65	72	91	91	86	67	83	80	1,120	0.1
Colombia	33	18	12	17	13	27	52	65	26	25	26	38	352	0.0
Costa Rica	3	4	16	9	2	3	6	1	5	2	1	3	55	0.0
Ecuador	6	10	8	3	2	4	5	3		2	7	1	51	0.0
Mexico	43	30	27	47	29	28	94	33	31	49	71	41	523	0.0
Peru	27	14	13	25	12	8	11	19	8	5	19	10	171	0.0
United States	4,716	4,331	4,031	4,366	2,618	3,121	3,808	3,059	2,563	2,912	3,325	4,400	43,250	3.1
Uruguay	47	2	9	13	84	11	3	12	1	2	1	2	187	0.0
Other Americas	325	167	141	161	152	45	17	61	76	20	4	285	1,454	0.1
Africa	334	258	283	301	280	313	328	281	200	223	137	275	3,213	0.2
Cameroon	24	23	30	41	34	50	48	33	9	16	14	15	337	0.0
Congo	11	14	10	7	19	28	12	14	5	10	5	2	137	0.0
Ghana	35	28	36	34	40	24	47	27	12	20	9	16	328	0.0
Kenya	7	5	11	7	15	14	9	10		7	1	3	89	0.0
Liberia	46	38	37	41	50	38	37	21	2	5	3	7	325	0.0
Nigeria	18	23	15	21	8	13	18	13	5	12	6	14	166	0.0
Sudan	1						10	1			1		13	0.0
South Africa	152	100	113	108	78	99	107	118	145	146	92	200	1,458	0.1
Uganda	23	16	23	30	32	36	34	32	5	1	3	7	242	0.0
Other Africa	17	11	8	12	4	11	6	12	17	6	3	11	118	0.0
Middle East	707	629	479	367	264	325	403	375	394	524	445	493	5,405	0.4
Egypt	3	2	6	4	2	5	4	4	5	3	2	3	43	0.0
Iran	57	30	37	65	30	23	43	54	34	49	30	45	497	0.0
Iraq	2		4	2		1	2	2	4	1	1	2	21	0.0
Israel	575	513	378	234	190	162	207	259	269	414	360	392	3,953	0.3
Kuwait	30	37	28	28	25	84	97	18	39	36	37	25	484	0.0
Oman	6	4	3	7	3	9	10	10	7	6	4	6	75	0.0
Palestine	1		1				2			1			5	0.0
Qatar	1	23	2	2		2	4	4		3	1		42	0.0
Saudi Arabia	4	3	3	1	1	1	10	1		2	1	2	29	0.0
United Arab Emirates	7	9	7	10	5	27	15	17	23	3	8	6	137	0.0
Yemen	7	1	4	5	5	6	5	1				2	36	0.0
Other Middle East	14	7	6	9	3	5	4	5	13	6	1	10	83	0.0



International Tourist Arrivals to Cambodia by Land and Waterway by Regions in 2011

Months	Asia and the Pacific	ASEAN	Europe	Americas	Africa	Middle East	Total
Q1	232,909	189,693	93,651	21,788	875	1,815	351,038
January	78,218	61,445	35,006	8,025	334	707	122,290
February	72,621	58,491	29,937	7,046	258	629	110,491
March	82,070	69,757	28,708	6,717	283	479	118,257
Q2	256,197	218,664	46,358	15,213	894	956	319,618
April	87,785	69,661	21,426	6,488	301	367	116,367
May	81,986	72,374	13,242	4,217	280	264	99,989
June	86,426	76,629	11,690	4,508	313	325	103,262
Q3	294,498	254,143	52,467	15,527	809	1,172	364,473
July	98,481	84,564	18,521	5,452	328	403	123,185
August	98,345	84,855	21,347	6,415	281	375	126,763
September	97,672	84,724	12,599	3,660	200	394	114,525
Q4	274,496	235,899	73,582	16,151	635	1,462	366,326
October	93,343	81,374	16,126	4,152	223	524	114,368
November	82,525	71,076	27,811	5,206	137	445	116,124
December	98,628	83,449	29,645	6,793	275	493	135,834
Total	1,058,100	898,399	266,058	68,679	3,213	5,405	1,401,455
share (%)	75.5%	64.1%	19.0%	4.9%	0.2%	0.4%	100.0%



International Tourist Arrivals to Cambodia by Land and Waterway by Purpose of Visit in 2003 - 2011

Purpose of Visit	Int'l tourist arrivals									change (%) 2011*/10
	2003	2004	2005	2006	2007	2008	2009	2010	2011	
Total	245,042	361,238	565,094	672,977	718,615	886,058	1,049,848	1,203,989	1,401,455	16.4
Holiday	226,423	337,065	460,355	635,196	657,332	816,218	994,433	1,148,858	1,346,524	17.2
Business	15,348	18,546	22,409	31,584	53,324	61,431	46,179	45,987	46,846	1.9
Other	3,271	5,627	82,330	6,197	7,959	8,409	9,236	9,144	8,085	-11.6
Q1	63,007	96,499	156,263	181,914	177,219	242,182	287,075	312,186	351,038	12.4
Holiday	59,107	91,074	123,851	174,201	165,879	225,121	273,078	298,831	338,057	13.1
Business	3,163	4,320	4,790	6,451	9,596	14,938	11,834	11,257	11,032	-2.0
Other	737	1,105	27,622	1,262	1,744	2,123	2,163	2,098	1,949	-7.1
Q2	43,633	70,997	123,980	153,640	148,911	192,006	243,009	276,597	319,618	15.6
Holiday	39,097	65,756	96,612	144,742	134,657	173,996	228,833	262,426	304,828	16.2
Business	3,500	3,904	5,254	7,320	12,108	15,769	11,697	11,797	12,581	6.6
Other	1,036	1,337	22,114	1,578	2,146	2,241	2,479	2,374	2,209	-7.0
Q3	60,655	84,257	120,384	146,418	153,292	190,503	240,249	293,770	364,473	24.1
Holiday	55,789	78,045	113,759	136,244	136,951	173,112	227,026	281,572	350,709	24.6
Business	4,045	4,791	5,479	8,453	14,632	15,498	11,073	10,183	11,801	15.9
Other	821	1,421	1,146	1,721	1,709	1,893	2,150	2,015	1,963	-2.6
Q4	77,747	109,485	164,467	191,005	239,193	261,367	279,515	321,436	366,326	14.0
Holiday	72,430	102,190	126,133	180,009	219,845	243,989	265,496	306,029	352,930	15.3
Business	4,640	5,531	6,886	9,360	16,988	15,226	11,575	12,750	11,432	-10.3
Other	677	1,764	31,448	1,636	2,360	2,152	2,444	2,657	1,964	-26.1

UNIT II

DOMESTIC TOURIST



Internal Tourism Statistics Report in 2009 - 2011

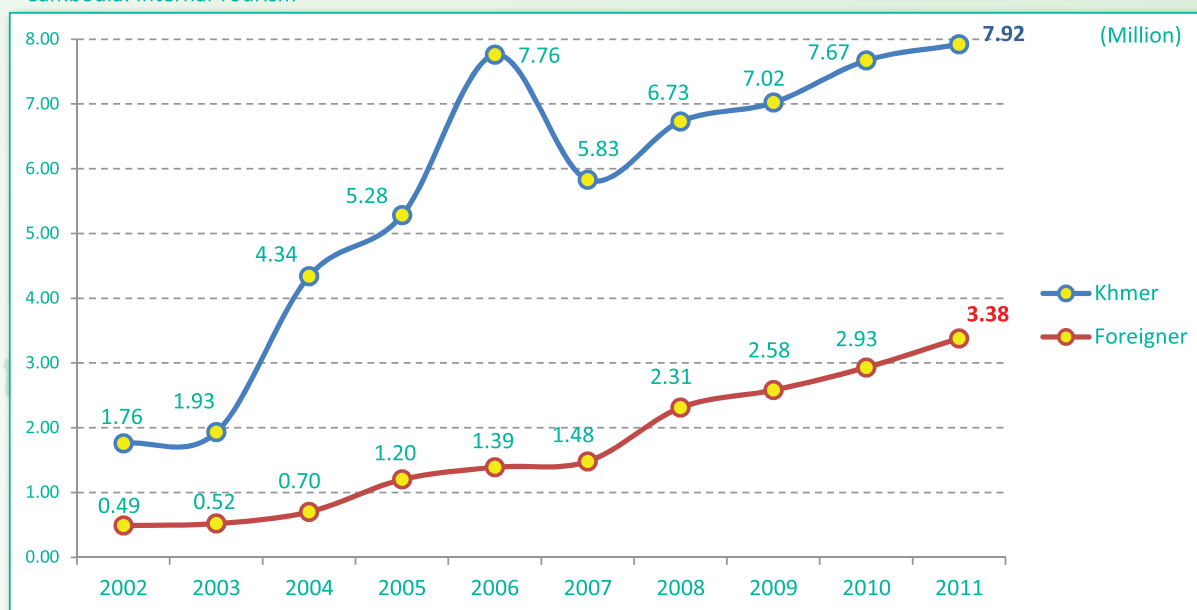
No.	Destinations	2009		2010		2011		share (%)		change (%)	
		KHM	INT	KHM	INT	KHM	INT	2011*		*2011/10	
								KHM	INT	KHM	INT
I	Phnom Penh	1,973,370	1,163,493	2,001,850	1,203,033	2,124,065	1,307,498	26.8	38.7	6.1	8.7
II	Siem Reap	1,279,356	998,084	1,577,247	1,305,256	1,701,350	1,610,076	21.5	47.7	7.9	23.4
III	Costal Area (4K)	812,738	154,504	1,200,413	162,080	1,691,829	193,093	21.4	5.7	40.9	19.1
	1 Kampong Som	395,174	126,665	491,134	133,532	558,287	153,736			13.7	15.1
	2 Kampot	189,846	11,566	238,147	16,940	316,376	17,198			32.8	1.5
	3 Kep	175,509	7,180	372,092	6,922	740,313	8,763			99.0	26.6
	4 Koh Kong	52,209	9,093	99,040	4,686	76,853	13,396			-22.4	185.9
IV	Eco-tourism	308,284	42,520	331,424	43,409	394,896	48,674	5.0	1.4	19.2	12.1
	1 Kratie	100,677	12,325	127,337	13,733	145,054	17,296			13.9	25.9
	2 Mondul Kiri	26,107	3,251	40,652	3,916	58,757	4,879			44.5	24.6
	3 Rattanak Kiri	97,595	16,821	100,605	17,961	100,930	17,562			0.3	-2.2
	4 Stung Treng	83,905	10,123	62,830	7,799	90,155	8,937			43.5	14.6
V	Other	2,647,761	217,156	2,556,694	214,463	2,008,038	218,429	25.4	6.5	-21.5	1.8
	1 Banteay Meanchey	106,969	16,215	75,205	12,530	77,331	12,157				
	2 Battambang	223,290	26,870	226,541	40,562	288,598	58,941				
	3 Kampong Cham	237,348	13,901	286,820	27,487	233,439	11,222				
	4 Kampong Chhnang	8,148	2,763	11,327	3,306	15,484	4,335				
	5 Kampong Speu	151,558	14,078	23,265	14,341	17,060	12,127				
	6 Kampong Thom	61,425	4,627	53,130	16,165	58,587	21,882				
	7 Kandal	1,287,980	9,549	1,407,725	7,687	958,491	5,186				
	8 Oddar Meanchey	68,860	13,458	93,304	972	23,312	1,767				
	9 Pailin	98,973	82,510	244,027	62,571	233,535	62,047				
	10 Preah Vihear	40,525	8,452	21,087	11,249	32,506	10,542				
	11 Prey Veng	72,093	583	14,254	2,343	10,761	1,602				
	12 Pursat	257,105	1,809	49,180	2,920	7,421	3,059				
	13 Svay Rieng	12,623	520	13,025	850	12,257	1,607				
	14 Takeo	20,864	21,821	37,804	11,480	39,256	11,955				
	TOTAL	7,021,509	2,575,757	7,667,628	2,928,241	7,920,178	3,377,770	100.0	100.0	3.3	15.4

Note:

KHM: Cambodian visitors

INT: Foreigner visitors

Cambodia: Internal Tourism



UNIT III

TOURISM SERVICES



Section I: Accommodations

1. Number of Hotels and Guesthouse from 1997 - 2011

Years	Hotels				Guesthouse			
	number	change (%)	room	change (%)	number	change (%)	room	change (%)
1997	179	0	6,989	0	60	0	477	0
1998	216	20.7	8,247	18.0	147	145.0	1,510	216.6
1999	221	2.3	9,115	10.5	186	26.5	1,897	25.6
2000	240	8.6	9,673	6.1	292	57.0	3,233	70.4
2001	247	2.9	10,804	11.7	370	26.7	3,899	20.6
2002	267	8.1	11,426	5.8	509	37.6	6,109	56.7
2003	292	9.4	13,201	15.5	549	7.9	6,497	6.4
2004	299	2.4	14,271	8.1	615	12.0	7,684	18.3
2005	317	6.0	15,465	8.4	684	11.2	9,000	17.1
2006	351	10.7	17,914	15.8	742	8.5	9,166	1.8
2007	395	12.5	20,470	14.3	891	20.1	11,563	26.2
2008	398	0.8	20,678	1.0	925	3.8	12,180	5.3
2009	451	13.3	23,010	11.3	1,018	10.1	14,512	19.1
2010	440	-2.4	24,393	6.0	1,087	6.8	15,321	5.6
2011	476	8.2	26,484	8.6	1,142	5.1	16,752	9.3

2. Distribution of hotels and guesthouses by cities and provinces in 2011

No.	Regions	Hotels				Guesthouse	
		number	single	twin	Total	number	room
I	Phnom Penh	161	3,599	4,020	7,619	417	6,393
II	Siem Reap	138	3,438	6,969	10,407	230	3,207
III	Costal Area	66	1,361	2,034	3,395	196	2,638
	Kampong Som (Sihanoukville)	49	814	1,470	2,284	123	1,841
	Kampot	5	233	98	331	48	442
	Kep	6		70	70	22	302
	Koh Kong	6	314	396	710	3	53
IV	Northeast (Eco-tourism)	23	254	582	836	69	1,300
	Kratie	10	80	266	346	14	213
	Mondul Kiri	2	31	78	109	21	514
	Rattanak Kiri	6	82	154	236	21	326
	Stung Treng	5	61	84	145	13	247
V	Others	88	1,222	3,005	4,227	230	3,214
	Banteay Meanchey	4	62	131	193	15	195
	Battambang	27	435	938	1,373	32	655
	Kampong Cham	5	45	163	208	30	248
	Kampong Chhnang	7	45	150	195	7	88
	Kampong Speu	1	19	16	35	10	105
	Kampong Thom	5	51	116	167	15	182
	Kandal					10	120
	Oddar Meanchey	5	62	151	213	22	259
	Pailin	4	147	101	248	10	114
	Preah Vihear	2	8	19	27	19	204
	Prey Veng	11	30	188	218	9	284
	Pursat	4	34	122	156	18	231
	Svay Rieng	13	284	910	1,194	20	293
	Takeo					13	236
	Total	476	9,874	16,610	26,484	1,142	16,752

Section II: Travel Agencies and Tour Operators

1. Number of travel agencies and tour operators from 1996 - 2011

Years	Offices			change (%)
	head	branch	Total	
1996	81	35	116	0
1997	78	37	115	-0.9%
1998	103	34	137	19.1%
1999	117	43	160	16.8%
2000	140	64	204	27.5%
2001	166	70	236	15.7%
2002	186	73	259	9.7%
2003	186	84	270	4.2%
2004	208	94	302	11.9%
2005	237	99	336	11.3%
2006	277	105	382	13.7%
2007	333	118	451	18.1%
2008	354	119	473	4.9%
2009	372	113	485	2.5%
2010	392	115	507	4.5%
2011	404	185	589	16.2%

2. Number of travel agencies and tour operators from 2005 - 2011

Regions	2005			2006			2007			2008			2009			2010			2011			
	HO	BO	Total	HO	BO	Total	HO	BO	Total	HO	BO	Total	HO	BO	Total	HO	BO	Total	HO	BO	Total	
Phnom Penh	154	14	168	179	20	199	210	22	232	223	26	249	233	25	258	233	25	258	250	26	276	
Siem Reap	72	73	145	85	78	163	103	89	192	114	86	200	124	81	205	144	81	225	131	149	280	
Kampong Som	1	1	2	1	1	2	4	1	5	3	1	4	3	1	4	3	1	4	10	1	11	
Banteay Meanchey	8	7	15	8	3	11	9	3	12	9	3	12	9	3	12	9	3	12	8	5	13	
Svay Rieng	1		1	1		1	1		1	1		1	1		1	1		1	1		1	
Oddar Meanchey	1		1	1		1	1		1													
Koh Kong		1	1		1	1		1	1		1	1		1	1		1	1		1	1	
Battambang		3	3		2	2		1	2	3		1	2	3		1	4	5		1	3	4
Kandal				1		1		1		1		1		1								
Kratie																				1		1
Kampot										1		1								1		1
Takeo										1		1		1		1		1		1		1
Other							3		3													
Total	237	99	336	277	105	382	330	118	448	352	119	471	371	113	484	392	115	507	404	185	589	

HO: Head Office; BO: Branch Office

Section III: Tour Guides

Licensed Tour Guides

No.	Languages	2008				2009				2010			
		Phnom Penh		Siem Reap		Phnom Penh		Siem Reap		Phnom Penh		Siem Reap	
		Total	Females	Total	Females	Total	Females	Total	Females	Total	Females	Total	Females
1	English	129	33	795	45	133	33	1,081	59	143	34	1,101	60
2	Japanese	46	13	583	134	46	13	651	147	46	13	659	147
3	French	46	18	165	25	52	19	191	30	54	20	192	31
4	Chinese	48	0	179	34	60	3	297	46	64	4	303	48
5	Korean	2	0	77	5	2	0	101	5	2	0	101	5
6	Thai	9	4	211	22	9	4	234	26	9	4	234	26
7	German	23	6	71	5	26	7	87	7	28	7	89	7
8	Spanish	10	1	76	4	12	1	100	5	13	1	103	6
9	Italian	1	0	20	1	1	0	22	1	1	0	22	1
10	Russian	4	1	29	4	6	1	38	4	6	1	39	4
11	Vietnam	4	1	6	1	5	1	16	2	5	1	16	2
Total		318	76	2,206	279	352	82	2,818	332	371	85	2,859	337

5. Airlines

Domestic Airlines

No.	Airlines	Code	From / To	Flight	Time Travel	Address
1	Cambodia Angkor Air	K6	Ho Chi Minh	PNH: 14/week REP: 21/week 28/week 3/week 45mn		PNH: #206A, Preah Norodom Blvd., Tel.: +855 23 6666788 Fax: +855 23 224164
2	Tonle Sap Air					

International Airlines

No.	Airlines	Code	From / To	Flight	Time Travel	Address
3	Thai Airways International	TG	Bangkok	PNH: 14/week	1h10mn	PNH: #8B, 294 Mao Tse Toung Blvd., Tel.: +855 23 214359-61 Fax: +855 23 214369
4	Vietnam Airlines	VN	Ho Chi Minh Vientiane Ho Chi Minh Hanoi Lung Prabang	PNH: 10/week PNH: 7/week REP: 14/week REP: 28/week REP: 7/week	1h 2h35mn 2h40mn	PNH: #41, Street 214 Tel.: +855 (0)23 215998 REP: #342, National Road 6, Tel.: +855 (0)63 964488
5	Silk Air	MI	Singapore	PNH: 13/week REP: 8/week	2h15mn 1h55mn	PNH: #219-B, Himawari Hotel Apartments Tel.: +855 23 426808
6	Malaysian Airlines	MH	Kuala Lumpur	PNH: 14/week REP: 3/week	1h50mn 1h05mn	PNH: #172-184, Monivong Blvd., Tel.: +855 23 426688
7	Dragon Air	KA	Hong Kong	PNH: 7/week REP: Charter	2h15mn	PNH: #168, Street 217, Tel.: +855 (0)23 424300
8	Eva Air	BR	Taiwan	PNH: 7/week	3h30mn	PNH: Suite 8A, #298, Mao Tse Toung Tel.: +855 (0)23 219911
9	Bangkok Airways	PG	Bangkok	PNH: 28/week REP: 35/week	1h10mn 1h	PNH: #61A, Street 214, Tel.: +855 23 722545 REP: #571, National Road 6 Tel.: +855 (0)63 720022
10	Shanghai Airlines	FM	Shanghai	PNH: 7/week	4h30mn	PNH: #19, Street 106, Tel.: +855 (0)23 723999
11	China Southern Airlines	CZ	Goangzhou	PNH: 10/week REP: 7/week	1h30mn	PNH: #168, Street Monireth, Tel.: +855 (0)23 424588
12	Lao Airlines	QV	Vientiane	PNH: 0/week REP: 8/week	2h30mn 2h35mn	PNH: #58B, Sihanouk Blvd., Tel.: +855 (0)23 222956 REP: #114, National Road 6 Tel.: +855 (0)63 963283
13	Air Asia Berhad	AK/FD	Kuala Lumpur Bangkok	PNH: 14/week REP: 7/week	2h10mn 2h10mn	PNH: #66, Mao Tse Toung Blvd., Tel.: +855 (0)23 356011
14	Thai Air Asia	FD	Bangkok	PNH: 7/week		PNH: #32, Street 322, Norodom Blvd., Fax: +855 (0)23 222695
15	Jetstar Asia Airways	3K	Singapore	PNH: 7/week REP: 3/week	1h55mn 2h05mn	PNH: Tel: +855 (0)23 220909 REP: Tel: +855 (0)63 964388
16	China Airlines	CI	Taipei, Taiwan	PNH: 3/week	3h30mn	PNH: #32, Norodom Blvd., Tel.: +855 (0)223525
17	Korean Air	KE	Seoul Seoul Pusan	PNH: 7/week REP: 13/week REP: 4/week	5h	Room No. F3-R03, Intellingent Office, 254 Preah Monivong Blvd., Phnom Penh Tel.: +855 (0)23 224047-49 Fax: +855(0)23 224050
18	Asiana Airlines	OZ	Seoul	PNH: 7/week REP: 7/week	5h 10mn 5h30mn	Tel.: +855 (0)23 890441-442
19	China Eastern Airlines	MU	Naning Shanghai	PNH: 3/week REP: 2/week	2h10mn	
20	Air France		Charles De Gaulle	PHN: 3/week		
21	Myanmar Air		Yangoon	PNH: 2/week REP: 2/week		
22	Japan Airlines	JL		REP: Charter		
23	Thomson Airways	BY		REP: Charter		

Summer 2012 (Mar 25 - Oct 27 2012)

Note: PNH: Phnom Penh; REP: Siem Reap; KOS: Sihanouk Ville; BBM: Battambang; KKZ: Koh Kong;
MWV: Mondul Kiri; RBE: Rattanak Kiri; TNX: Stung Treng

Published by: Statistics and Tourism Information Department, Ministry of Tourism.

Sources: Immigration Department of the Ministry of Interior and Provincial Tourism Departments;

Compiled by:

1. Mr. KONG Sopheareak, Director, researcher and analyst
2. Mr. HORTH Vanny, Inbound and outbound tourism statistics
3. Mr. NUTH Nearak, Interview monitor
4. Mr. SUONG Mardy, Designer
5. Mr. SANG Sithikun, Domestic tourism statistics
6. Mr. CHAK Vorleak, Monitoring and data entries
7. Mr. LANG Daravuth, Data collector
8. Mr. Eiichi Saito, JICA Senior Volunteer, Market Research Advisor





CAMBODIA

Kingdom of Wonder

CAMBODIA BAY

Toward The Nomination For The Official Member of The Most Beautiful BAYS In The WORLD Club
CLEAN CITY, CLEAN RESORT, GOOD SERVICE

www.mot.gov.kh | www.tourismcambodia.org