



MINISTRY OF TOURISM

KINGDOM OF CAMBODIA  
NATION RELIGION KING

# Tourism Statistics



## Annual Report 2012





**ANNUAL REPORT  
ON  
TOURISM STATISTICS 2012**

---

**STATISTICS & TOURISM INFORMATION DEPARTMENT  
MINISTRY OF TOURISM**

**KINGDOM OF CAMBODIA**



**MINISTRY OF TOURISM**

Statistics and Tourism Information Department  
No. 3A, Street 169, Sangkat Veal Vong, Khan 7 Makara, Phnom Penh, Cambodia.  
Tel.: +855 23 884972 | Fax: +855 23 885003  
Email: [info@mot.gov.kh](mailto:info@mot.gov.kh)  
Website: [www.mot.gov.kh](http://www.mot.gov.kh)

# MESSAGE

**Dr. THONG Khon**  
Minister of Tourism



Dear all readers,

The Ministry of Tourism (MOT) collates and publishes tourism statistic reports annually providing important information pertaining to the tourism industry. This annual report has been very well received over the years. The commitment of the Statistics and Tourism Information Department and research team generate invaluable statistics providing fundamental indicators for national and international investors and valuable materials beneficial to the private sectors and all stakeholders.

I am pleased to share that our tourism sector has been enjoying a consistent growth at a remarkable rates. The year 2012 saw a 24.4% increase over last year in international tourist arrivals to Cambodia with more than 3.58 million, of which Siem Reap - Angkor received over 2.06 million with an increase of 28.2%. Also, the number of domestic tourist recorded an estimation of 8.25 million with an increase of around 5.7% over the previous year. Based on the going rate, we are optimistic that Cambodia will be able to attract over 7 million international tourist arrivals by year 2020. In order to achieve the above fast-growing trend, the Royal Government of Cambodia has further intensified the promotional campaign "**Cambodia: Kingdom of Wonder**" where all world heritages are gathered, namely Angkor Wat and Preah Vihear Temple while at the same time pushed up the competitive movement of "**Clean City, Clean Resort, Good Service**", a potential tool to provide a standard quality tourism services for all visitors, making Cambodia a world-class destination.

It is expected that this Statistics Report 2012 will be a crucial instrument for either academic purposes or documentation for researchers, private sectors and all stakeholders as it may serve. Moreover, it also acts as a key indicator for national and international investors whom attempt to invest in tourism sector in Cambodia.

I sincerely thank you for your interest and wish you contentment.

A handwritten signature in blue ink, appearing to be 'Thong Khon'.

A printed signature in blue ink, appearing to be 'Thong Khon'.

**Dr. THONG Khon**  
Minister of Tourism

## Disclaimer

All rights are reserved. No part of this publication may be reproduced in any form or by any electronic or mechanical means, including information storage and retrieval systems, without permission in writing from authorised personnel from the Department of Statistics and Tourism Information of the Ministry of Tourism.

This publication is intended to provide accurate information and include material from sources considered to be reliable. It is provided with the understanding that the Department of Statistics and Tourism Information of the Ministry of Tourism, legally established by the Royal Government of Cambodia, has collected a data of international visitor arrivals at various international border checkpoints in Cambodia, disclaims any warranty concerning information provided, assume no liability for advertising claims and reserve the right to accept or reject any advertising. The publisher welcomes suggestions for corrections or changes. Statements and opinions expressed in this publication do not necessarily represent those of the publisher or Department of Statistics and Tourism Information of the Ministry of Tourism, which assumes no responsibility for editorial content.

It should also be recognised that with this Annual Statistical Report in particular, while the data used were accurate at the time of compilation and printing, some changes due to revisions and/or changing collection and weighting techniques may have occurred since then.

Please contact the Department of Statistics and Tourism Information of the Ministry of Tourism ([info@mot.gov.kh](mailto:info@mot.gov.kh)) for the detail.



## General Information



Official Name	Kingdom of Cambodia
Area	181,035 km <sup>2</sup>
National Independence Day	09 November, 1953
Population	13,395,682 (Census 2008) Male: 48.6%; Female: 51.4%
Annual Population Growth Rate	1.54%
Cambodian Outbound Tourism	792,398 (2012)
Density	77
Language	Khmer
Religion	Buddhist 97%
Capital	Phnom Penh
Provinces	23
Cities	26
Khans	8
Districts	159
Communes	1,417
Sangkats	204
Country Code	+855
Time	GMT +7 hours

## Khmer History

The Mon-Khmer race developed slowly during the first six centuries of the Christian era. Under Indian influence, a powerful maritime empire called “Funan” ruled over all the shores of the Gulf of Siam. Within a short time, this new power known as Chenla absorbed the Funanese Kingdom. In the late 7<sup>th</sup> century, Chenla broke into two parts: land Chenla (to the north) and water Chenla (to the south along the Gulf of Thailand). Land Chenla was fairly stable during the 8<sup>th</sup> century, whereas water Chenla was beset by dynastic rivalries.

At the beginning of the 9<sup>th</sup> century, the kings set up their capital in the present province of Siem Reap. For nearly six centuries, they erected two hundred temples as well as their sanctuaries in the Angkorian area of some 400 square kilometers in the Siem Reap Province.

King Suryavarman II (1113-1150) built the temples such as Angkor Wat, Thommanon, Chau Say Tevoda, Preah Palilay, Preah Pithu, and Banteay Samrè.

Jayavarman VII (1181-1220) was best known for his huge building program. Firstly, he built Ta Prohm (1186) and Preah Khan (1191) to dedicate to his parents. Secondly, he erected Banteay Kdei, Srah Srang, the Terrace of the Leper King, the Terrace of the Elephants, Neak Pean, Ta Som, Ta Nei, and some others in other parts of the country. Thirdly, he founded his great capital, Angkor Thom. Finally, in the center, he built the Bayon with its two hundred stone faces.

The decline of the Angkor era began after the death of King Jayavarman VII in the early 13<sup>th</sup> century. Due to the Siamese invasion and the limitation of the irrigation system, Khmer power declined so much that the king was finally obliged to move to the vicinity of Phnom Penh in 1431. Resulting from a series of Siamese and Cham invasions, the country was put as a French protectorate in 1863.

After regaining Independence in 1953, the country has had several names:

1. The Kingdom of Cambodia (under the Reachia Niyum Regime from 1953 to 1970);
2. The Khmer Republic (under the Lon Nol Regime from 1970 to 1975);
3. Democratic Kampuchea (under the Pol Pot Genocidal Regime from 1975 to 1979);
4. The People’s Republic of Kampuchea (1979-1989);
5. The State of Cambodia (1989-1993);
6. The Kingdom of Cambodia (1993 until now).

## Definitions of Tourism Statistics

- **Statistics** are the data obtained by collecting, processing, compiling, analyzing, publishing and disseminating results, gathered from respondents through statistical collections or from administrative data sources.
- **Data** are information in the form of numbers.
- **Tourism statistics** are the designated official statistics produced by the Ministry of Tourism.
- **Tourism** refers to the activities of individuals travelling to and staying in places outside their usual environment for a specified period and not exceeding one consecutive year for leisure, recreation, business, and any other legal tourism purposes.
- **Tourist** refers to any persons who are Cambodian or non-Cambodian nationals travelling to other places outside their usual environment, staying at least overnight and not exceeding a specified period for leisure, recreation, business, and other legal tourism purposes; and not relevant to the purpose of permanent residence or any remunerated activities.
- **Domestic tourist** refers to any persons who are Cambodian citizens travelling within Cambodia and staying at least overnight and not exceeding a specified period for leisure, recreation, business and other legal tourism activities.
- **International tourist** refers to any foreign visitors to Cambodia who stay at least overnight but not more than a specified period for leisure, recreation, business and other legal tourism purposes; and not relevant to the purpose of permanent residence or any remunerated activities.
- **Internal international tourist** refers to any persons who are not Cambodian nationals, but have legal temporary residence in Cambodia, travelling to and staying overnight for leisure, recreation, business and other legal tourism purposes in the Kingdom of Cambodia.
- **Cambodia outbound tourist** refers to any Cambodian nationals who travel overseas (Cambodian nationals living abroad are excluded), staying at least overnight for leisure, recreation, business or other legal tourism purposes.
- **Same-day visitor** (Excursionist) refers to any individuals who are Cambodian or non-Cambodian nationals travelling to other places outside their usual environment for leisure, recreation, business, and other legal tourism purposes, but do not stay overnight there.
- **Tourism survey** is a scientific statistical collection of data from domestic or international tourism which statistics unit selects as samples.
- **Tourism manpower** refers to any persons who have been working in the tourism sector.
- **Tourism skilled labor** refers to any persons who have professionalism in tourism and have been working in the tourism sector.

Unofficial translation

# CONTENTS

Minister Message	
Disclaimer	
General Information	
Definitions	
Tourism Highlight 1993 – 2012	
Quick overview of key trends in 2012	
Map of International Border Check-Point	

## Unit I – Inbound and Outbound Tourism Statistics

International Tourist Arrivals to Cambodia by Months in 207 - 2012 .....	1
International Tourist Arrivals to Cambodia by Country of Residence in 2012.....	2 – 3
<i>(by all mean of transports)</i>	
International Tourist Arrivals to Cambodia by Purpose of Visit in 2012 .....	4 – 5
<i>(by all mean of transports)</i>	
International Tourist Arrivals to Cambodia by Regions in 2012 .....	6
<i>(by all mean of transports)</i>	
International Tourist Arrivals to Cambodia by Mode of Arrivals in 2011 - 2012 .....	7
International Tourist Arrivals to Cambodia by Mode of Arrivals in 2007 - 2012 <i>(by all mean of transports)</i> .....	7
International Tourist Arrivals to Cambodia by Country of Residence in 2008 - 2012.....	8 – 9
<i>(by all mean of transports)</i>	
Top ten generating market from 2007 - 2012 .....	10
International tourist arrivals to Cambodia by International border check-points in 2012 .....	11 – 12
Cambodian Outbound Tourism by Int'l Border Check-points in 2012 .....	13
International Outbound Tourism by Int'l Border Check Points in 2012 .....	14
International outbound tourism by country of residence in 2012 .....	15 – 16
Major Data in 1993 – 2012 .....	17
Profile of international Tourist Arrivals to Cambodia in 2009 – 2012 (Inbound Tourism Survey 2012).....	18

### Section I: Phnom Penh International Airport

International Tourist Arrivals to Phnom Penh International Airport by Months in 2003 - 2012.....	19
International Tourist Arrivals to Phnom Penh International Airport by Country of Residences in 2012 .....	20 – 21
Top Ten Generating markets in 2012, tourist arrivals by ranks .....	21
International Tourist Arrivals to Phnom Penh International Airport by Regions in 2012 .....	22
International Tourist Arrivals to Phnom Penh International Airport by Purpose of Visit in 2004 – 2012.....	23
Int'l Tourist Departures from Phnom Penh International Airport by Months in 2004 – 2012 .....	24

### Section II: Siem Reap International Airport

International Tourist Arrivals to Siem Reap Angkor by Months in 2004 - 2012.....	25
<i>(by all mean of transports)</i>	
International Tourist Arrivals to Siem Reap International Airport by Months in 2012.....	25
<i>(by air only)</i>	
International Tourist Arrivals to Siem Reap International Airport by Country of Residences in 2012 .....	26 – 27
Top ten generating markets in 2012, tourist arrivals by ranks <i>(by air only)</i> .....	27
International Tourist arrivals to Siem Reap International Airport by Regions in 2012.....	28
International tourist arrivals to Siem Reap Int'l Airport in 2012 from Destinations <i>(by air only)</i> .....	29
International Tourist Arrivals to Siem Reap International Airport by Purpose of Visit in 2005 - 2012 .....	30
Top ten generating markets in 2012, tourist arrivals by ranks <i>(by all mean of transports)</i> .....	30

### Section III: International Border Check-points

International Tourist Arrivals to Cambodia by Land and Waterways in 2003 - 2012 .....	31
Int'l Tourist Arrivals to Cambodia by Land and Waterways by Country of Residence in 2012.....	32 – 33
Top Ten Generating Markets in 2012, tourist arrivals by ranks .....	33
International Tourist Arrivals to Cambodia by Land and Water ways by Regions in 2012.....	34
International Tourist Arrivals to Cambodia by Land and Water ways by Purpose of Visit in 2004 – 2012.....	34

## Unit II – Domestic Tourism Statistics

Cambodian visitor arrivals to provinces in 2010 – 2012 .....	35
Foreigner visitor arrivals to other destinations in 2010 – 2012 .....	35



### Unit III – Tourism Supply Side

#### **Tourism Supply Side: Accommodations**

Number of hotels & guesthouses from 1997 – 2012 .....	37
Hotels classifications by MOT in 2012.....	37

#### **Tourism Supply Side: Tourism services**

Number of travel agencies & tour operators from 1996 – 2012 .....	38
Tourism services statistics in 2012.....	38

Airlines.....	39
---------------	----

Published by.....	40
-------------------	----



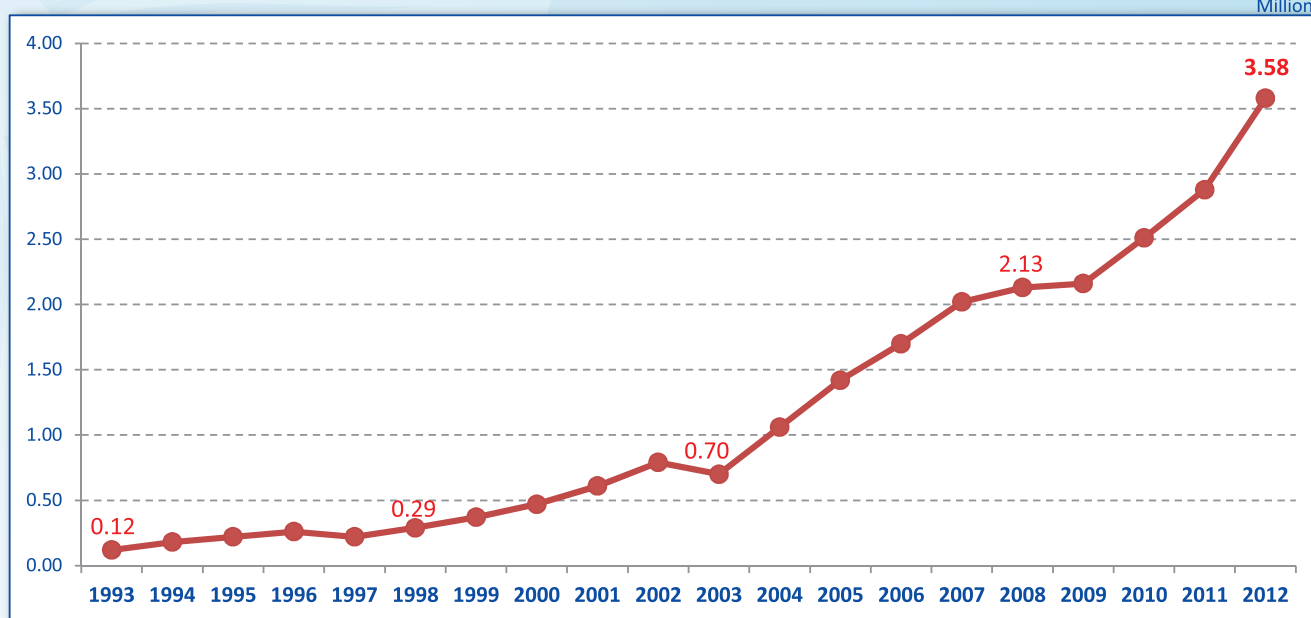
## Tourism Highlights

### International Tourist Arrivals, Average Length of Stay, Hotels Occupancy & Tourism Receipts 1993 - 2012

Years	Tourist Arrivals		Average Length	Hotels Occupancy	Tourism Receipts
	number	change (%)	of Stay (days)	(%)	(Million US\$)
1993	118,183	-	N/A	N/A	N/A
1994	176,617	49.4	N/A	N/A	N/A
1995	219,680	24.4	8.00	37.00	100
1996	260,489	18.6	7.50	40.00	118
1997	218,843	-16.0	6.40	30.00	103
1998	286,524	30.9	5.20	40.00	166
1999	367,743	28.3	5.50	44.00	190
2000	466,365	26.8	5.50	45.00	228
2001	604,919	29.7	5.50	48.00	304
2002	786,524	30.0	5.80	50.00	379
2003	701,014	-10.9	5.50	50.00	347
2004	1,055,202	50.5	6.30	52.00	578
2005	1,421,615	34.7	6.30	52.00	832
2006	1,700,041	19.6	6.50	54.79	1,049
2007	2,015,128	18.5	6.50	54.79	1,400
2008	2,125,465	5.5	6.65	62.68	1,595
2009	2,161,577	1.7	6.45	63.57	1,561
2010	2,508,289	16.0	6.45	65.74	1,786
2011	2,881,862	14.9	6.50	66.15	1,912
2012	3,584,307	24.4	6.30	68.49	2,210

Cambodia: Inbound Tourism

Million



# Quick overview of key trends

## International tourism – 2012 result

- A total of twenty international border check points involving two international airports, fifteen land international border check points, and three international ports have collected monthly on international tourist arrivals to Cambodia for 2012.
- International tourist arrivals to Cambodia witnessed 3.58 million with an increase of 24.4%, up from 2.88 million in 2012, which showed a sharp increase again after six years of moderate percent. Asia and the Pacific saw the highest growth of all regions with 28.8%, while by sub-region, the arrivals from ASEAN member countries reached (+37.5%), Europe (+12.6%), America (+12.32%), Middle East (+20.3%) Africa (-6.1%).
- The number of international tourist arrivals increased dramatically with witnessing 382,326 tourists equating to 10.7% of total arrivals in December. January came nearer to December, considering 350,257 equating to 9.8% of total arrivals.
- In the first quarter of 2012, the international tourist arrivals to Cambodia accounted for 27.8% increase, which was the peak period for Cambodia tourism. In the second quarter of 2012 saw an increase of 25.5% comparing to the same period in 2011. The third quarter witnessed increasing rate up to 17.3% while the fourth quarter reported the highest increasing rate up to 26.3% after the first quarter. In particular, we can see that the typical length of stay for tourists was 6.30 days, and the hotel occupancy was 68.49%, up from 66.15%.
- **Tourism receipts:**  
Consequently, Cambodia tourism receipts improved significantly at USD 2,210 million for 2012—representing a growth of 15% associating to 2011. The average expenditure of tourists was high at USD 117.64 per day.
- **By air:**  
In 2012, the international tourist arrivals by air accounted for 1,722,083 tourists, equating to 48.0% of total arrivals, containing of 28.1% of air arrivals were listed at Siem Reap International Airport and other 20.0% were recorded at Phnom Penh International Airport. 16.3% reported an increase from the arrivals by air to Cambodia comparing to the year 2011.
- **By land and waterway:**  
Overland arrivals to Cambodia accounted for 1,785,726 tourists in 2012, equating to 49.8% of total arrivals, with an increase of 35.3%. In concerns to the share of waterway arrivals, it accounted for 76,498, equating to 2.1% of total arrivals, with a decline of 5.7% compared to 2011. Interestingly, international tourist arrivals by land saw an enormous increase, which still plays an important role in growing Cambodia Tourism, although waterway reported a decline.
- **Purpose of Visit:**  
Leisure and holiday were the purpose of the international tourist arrivals visiting Cambodia in 2012, which accounted for 73.3% of total arrivals showed the central purpose, followed by 7.9% of VFR (Visiting Friends and Relatives), 7.3% of business, 3.4% of official travel and 2.1% for other reasons.

- **Visitor Profile:**

Surrounded by the 3.58 million international tourists to Cambodia in 2012, men accounted for 55.0% of total international arrivals. Remarkably, 83.1% of tourist arrivals to Cambodia as their first visit, and 16.9% travelers recorded as return tourists. Among international tourist arrivals to Cambodia, the following occupational categories were characterized: 9.3% of tourists were retired persons, 8.6% teachers, 4.8% government officials, 16.8% business persons, 30.7% employees, 18.6% students, and 11.1% others. 45.6% were free independent travelers (FIT) and 54.4% were group inclusive travelers (GIT) among all the international tourists arrival.

- **Market share:**

Vietnam 21.3%, Republic of Korea 11.5%, China 9.3%, Laos 7.1%, Thailand 5.6%, Japan 5.0%, United States of America 4.8%, France 3.4%, Australia 3.3%, and Malaysia 3.3% were the top-ten markets for Cambodia tourism in 2012.

- **Domestic Market:**

In 2012, Cambodia received an overall domestic tourist of 8.25 million from all tourist destinations, presenting a total growth of 5.7% equating to the year 2011. The number of domestic tourists of 1.96 million saw a 15.1% increase to Siem Reap Province; whereas Phnom Penh received 1.99 million tourists declined by 6.6%. The coastal areas (lying 440km in the provinces of Kampong Som, Kampot, Kep, and Koh Kong) received 1.83 million tourists, with an increase of rate up to 8.0% comparing to the previous year 2011. Furthermore, tourists travelled to the ecotourism destinations in Cambodia—the Northeast provinces including Kratie, Stung Treng, Rattanakiri, and Mondulkiri—received an overall number of tourists of 0.37 million, with an increase of 29.9%. Additionally, a potential region, Battambang Areas, which plays a significant role in agriculture of Cambodia included Battambang, Banteay Meanchey, Palin, and Pursat received a total domestic tourists of 0.6 million.



# Cambodia International Border Check Points



Legend		



**UNIT I**

**INBOUND & OUTBOUND  
TOURISM**

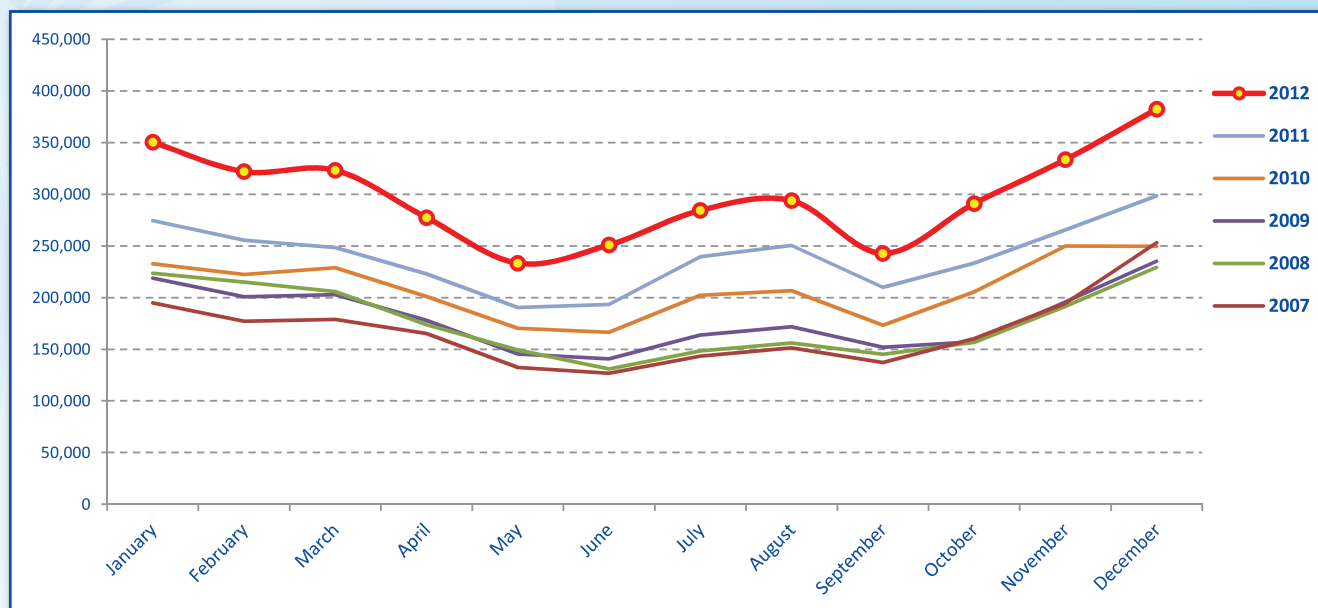


[www.cambodiaphotoplayer.com](http://www.cambodiaphotoplayer.com)

Bousra Waterfall, Modulkiri Province

International Tourist Arrivals to Cambodia by Months in 2007 - 2012

Months	2007	2008	2009	2010	2011	2012	share (%) 2012*	change (%) 2012*/11
<b>Q1</b>	<b>550,813</b>	<b>644,205</b>	<b>622,288</b>	<b>683,692</b>	<b>778,467</b>	<b>995,210</b>	<b>27.8</b>	<b>27.8</b>
January	194,932	223,581	218,691	232,590	274,471	350,257	9.8	27.6
February	177,130	214,902	200,789	222,354	255,499	321,870	9.0	26.0
March	178,751	205,722	202,808	228,748	248,497	323,083	9.0	30.0
<b>Q2</b>	<b>424,536</b>	<b>454,031</b>	<b>464,230</b>	<b>537,464</b>	<b>606,562</b>	<b>761,442</b>	<b>21.2</b>	<b>25.5</b>
April	165,347	173,903	177,955	200,965	223,032	277,304	7.7	24.3
May	132,512	149,275	145,564	170,164	190,258	233,220	6.5	22.6
June	126,677	130,853	140,711	166,335	193,272	250,918	7.0	29.8
<b>Q3</b>	<b>431,815</b>	<b>449,693</b>	<b>487,422</b>	<b>582,024</b>	<b>699,760</b>	<b>820,888</b>	<b>22.9</b>	<b>17.3</b>
July	143,310	148,449	163,817	202,349	239,527	284,282	7.9	18.7
August	151,478	156,098	171,668	206,563	250,429	293,859	8.2	17.3
September	137,027	145,146	151,937	173,112	209,804	242,747	6.8	15.7
<b>Q4</b>	<b>607,964</b>	<b>577,536</b>	<b>587,637</b>	<b>705,109</b>	<b>797,073</b>	<b>1,006,767</b>	<b>28.1</b>	<b>26.3</b>
October	160,235	156,718	157,105	205,515	233,190	290,959	8.1	24.8
November	194,646	191,549	195,570	249,892	265,539	333,482	9.3	25.6
December	253,083	229,269	234,962	249,702	298,344	382,326	10.7	28.1
<b>Total</b>	<b>2,015,128</b>	<b>2,125,465</b>	<b>2,161,577</b>	<b>2,508,289</b>	<b>2,881,862</b>	<b>3,584,307</b>	<b>100.0</b>	<b>24.4</b>





**International Tourist Arrivals to Cambodia by Country of Residence in 2012***(by all mean of transportations)*

Regions Country of Residence	2012													share (%) 2012*
	Jan	Feb	Mar	Apr	May	Jun	Jul	Aug	Sep	Oct	Nov	Dec	Total	
<b>GRAND TOTAL</b>	<b>350,257</b>	<b>321,870</b>	<b>323,083</b>	<b>277,304</b>	<b>233,220</b>	<b>250,918</b>	<b>284,282</b>	<b>293,859</b>	<b>242,747</b>	<b>290,959</b>	<b>333,482</b>	<b>382,326</b>	<b>3,584,307</b>	<b>100.0</b>
<b>Asia and the Pacific</b>	<b>244,199</b>	<b>227,874</b>	<b>232,122</b>	<b>212,038</b>	<b>186,897</b>	<b>207,062</b>	<b>223,189</b>	<b>230,850</b>	<b>201,211</b>	<b>229,830</b>	<b>236,753</b>	<b>280,291</b>	<b>2,712,316</b>	<b>75.7</b>
<b>ASEAN</b>	<b>108,468</b>	<b>106,883</b>	<b>121,898</b>	<b>125,392</b>	<b>116,707</b>	<b>133,032</b>	<b>135,329</b>	<b>132,977</b>	<b>121,472</b>	<b>131,890</b>	<b>131,595</b>	<b>148,624</b>	<b>1,514,267</b>	<b>42.2</b>
Brunei Darussalam	61	47	180	48	44	103	77	64	57	45	149	89	964	0.0
Indonesia	1,434	1,457	1,429	1,593	1,862	1,834	1,729	2,970	1,784	1,880	2,192	2,380	22,544	0.6
Lao PDR	14,883	16,374	18,091	12,721	18,990	22,174	24,064	24,474	25,370	24,114	23,762	29,005	254,022	7.1
Malaysia	8,515	7,933	9,284	8,971	9,352	9,667	9,131	10,035	8,436	10,989	11,929	12,522	116,764	3.3
Myanmar	402	372	487	625	277	376	368	231	220	246	454	686	4,744	0.1
Philippines	7,568	7,040	7,856	9,175	9,101	7,782	7,048	7,417	7,957	9,049	8,623	8,871	97,487	2.7
Singapore	2,969	3,313	4,583	3,448	4,959	5,012	3,613	3,681	3,721	4,301	6,103	7,481	53,184	1.5
Thailand	13,696	14,050	16,258	21,178	12,974	13,699	13,538	17,834	14,206	22,595	17,293	24,101	201,422	5.6
Vietnam	58,940	56,297	63,730	67,633	59,148	72,385	75,761	66,271	59,721	58,671	61,090	63,489	763,136	21.3
<b>Eastern Asia</b>	<b>115,922</b>	<b>108,348</b>	<b>96,352</b>	<b>73,316</b>	<b>60,461</b>	<b>60,872</b>	<b>74,891</b>	<b>86,646</b>	<b>67,672</b>	<b>83,380</b>	<b>88,439</b>	<b>109,853</b>	<b>1,026,152</b>	<b>28.6</b>
China (RPC)	35,398	27,079	26,375	23,731	19,386	19,918	27,364	28,366	26,819	30,892	32,592	35,974	333,894	9.3
Hong Kong SAR	629	372	732	893	823	687	566	365	344	688	939	1,244	8,282	0.2
Japan	15,432	18,018	21,001	11,093	10,219	9,744	10,370	19,563	14,971	12,401	16,933	19,582	179,327	5.0
Korea (ROK)	55,871	54,452	40,910	29,702	23,218	23,040	29,122	30,895	19,340	31,132	30,259	43,550	411,491	11.5
Mongolia	42	37	49	19	23	35	21	19	22	22	26	32	347	0.0
Taiwan, China	8,550	8,390	7,285	7,878	6,792	7,448	7,448	7,438	6,176	8,245	7,690	9,471	92,811	2.6
<b>Southern Asia</b>	<b>1,872</b>	<b>1,700</b>	<b>1,909</b>	<b>1,939</b>	<b>2,275</b>	<b>2,020</b>	<b>1,722</b>	<b>2,103</b>	<b>1,800</b>	<b>2,112</b>	<b>2,197</b>	<b>3,055</b>	<b>24,704</b>	<b>0.7</b>
Afghanistan	21	16	13	9	5	6	18	8	14	10	10	24	154	0.0
Bangladesh	103	102	99	78	79	131	98	108	100	96	167	206	1,367	0.0
Bhutan	11	18	7	6	26	16	9	18	4	5	3	11	134	0.0
India	1,471	1,308	1,429	1,562	1,614	1,506	1,310	1,613	1,426	1,676	1,719	2,365	18,999	0.5
Nepal	76	96	106	96	273	90	65	166	78	123	106	203	1,478	0.0
Pakistan	90	85	116	73	178	89	86	88	74	76	101	112	1,168	0.0
Srilanka	100	75	139	115	100	182	136	102	104	126	91	134	1,404	0.0
<b>Western Asia</b>	<b>364</b>	<b>248</b>	<b>279</b>	<b>151</b>	<b>136</b>	<b>135</b>	<b>152</b>	<b>125</b>	<b>138</b>	<b>143</b>	<b>246</b>	<b>303</b>	<b>2,420</b>	<b>0.1</b>
Kazakhstan	296	217	226	96	83	95	108	82	95	106	200	238	1,842	0.1
Uzbekistan	68	31	53	55	53	40	44	43	43	37	46	65	578	0.0
<b>Oceania</b>	<b>17,319</b>	<b>10,377</b>	<b>10,829</b>	<b>10,494</b>	<b>6,913</b>	<b>10,720</b>	<b>10,707</b>	<b>8,229</b>	<b>9,608</b>	<b>10,034</b>	<b>14,125</b>	<b>17,524</b>	<b>136,879</b>	<b>3.8</b>
Australia	15,090	9,261	9,577	8,916	5,723	9,402	9,233	6,993	8,331	8,659	11,573	14,971	117,729	3.3
Fiji	9	11	10	6	4	7	11	9	8	15	11	5	106	0.0
New Zealand	2,220	1,105	1,242	1,572	1,186	1,311	1,463	1,227	1,269	1,360	2,541	2,548	19,044	0.5
Other Asia & the Pacific	254	318	855	746	405	283	388	770	521	2,271	151	932	7,894	0.2
<b>Europe</b>	<b>74,993</b>	<b>67,861</b>	<b>64,606</b>	<b>45,321</b>	<b>29,061</b>	<b>26,474</b>	<b>41,936</b>	<b>47,594</b>	<b>27,530</b>	<b>42,076</b>	<b>70,786</b>	<b>73,121</b>	<b>611,359</b>	<b>17.1</b>
<b>Northern Europe</b>	<b>19,525</b>	<b>19,097</b>	<b>17,594</b>	<b>11,721</b>	<b>8,551</b>	<b>8,900</b>	<b>11,500</b>	<b>10,321</b>	<b>7,589</b>	<b>11,335</b>	<b>16,801</b>	<b>17,513</b>	<b>160,447</b>	<b>4.5</b>
Denmark	1,422	1,176	1,130	646	517	437	861	508	356	632	1,311	1,017	10,013	0.3
Finland	1,058	830	645	442	306	408	248	174	274	315	670	973	6,343	0.2
Iceland	52	36	45	59	11	82	87	26	18	20	63	79	578	0.0
Ireland	851	797	686	584	593	638	1,051	796	478	753	845	793	8,865	0.2
Norway	1,204	1,158	970	669	373	433	640	269	312	484	833	906	8,251	0.2
Sweden	2,882	2,433	1,835	1,094	577	483	566	469	495	907	1,846	2,628	16,215	0.5
United Kingdom	12,056	12,667	12,283	8,227	6,174	6,419	8,047	8,079	5,656	8,224	11,233	11,117	110,182	3.1
<b>Western Europe</b>	<b>30,598</b>	<b>29,072</b>	<b>28,458</b>	<b>19,136</b>	<b>12,304</b>	<b>10,864</b>	<b>20,497</b>	<b>21,204</b>	<b>10,897</b>	<b>16,335</b>	<b>29,883</b>	<b>30,251</b>	<b>259,499</b>	<b>7.2</b>
Austria	1,202	1,287	904	555	287	234	487	503	321	438	1,006	924	8,148	0.2
Belgium	1,471	1,316	1,735	1,089	638	641	1,759	1,232	628	833	1,701	1,719	14,762	0.4
France	13,550	13,164	12,146	9,439	6,273	5,696	10,598	11,929	4,517	7,756	13,467	12,640	121,175	3.4
Germany	8,353	8,764	9,778	5,328	3,129	2,318	3,546	4,507	3,663	4,718	9,057	9,376	72,537	2.0
Luxembourg	52	48	37	45	17	18	26	56	7	34	69	65	474	0.0
Monaco	6	2	2	8	3	3	6	5	1	5	4	10	55	0.0
Netherlands	3,180	2,347	2,025	1,396	1,186	1,181	2,749	2,079	1,041	1,608	2,541	3,226	24,559	0.7
Switzerland	2,784	2,144	1,831	1,276	771	773	1,326	893	719	943	2,038	2,291	17,789	0.5
<b>Eastern Europe</b>	<b>19,206</b>	<b>14,745</b>	<b>13,456</b>	<b>9,098</b>	<b>5,518</b>	<b>4,202</b>	<b>4,790</b>	<b>5,403</b>	<b>5,289</b>	<b>8,657</b>	<b>18,037</b>	<b>18,770</b>	<b>127,171</b>	<b>3.5</b>
Bulgaria	85	81	49	51	42	12	34	34	32	60	80	136	696	0.0
Czech Republic	610	622	523	322	144	100	173	158	131	211	619	451	4,064	0.1
Estonia	124	170	115	34	16	22	45	24	27	77	209	159	1,022	0.0
Hungary	430	431	311	95	71	75	111	95	82	216	315	305	2,537	0.1
Lithuania	161	136	165	62	26	76	33	27	26	66	178	133	1,089	0.0
Poland	1,260	1,242	965	808	292	309	380	404	382	527	2,074	1,351	9,994	0.3
Romania	190	88	135	74	61	43	101	71	106	131	115	212	1,327	0.0
Russian Federation	15,462	11,144	10,517	7,158	4,522	3,356	3,604	4,274	4,136	6,847	13,569	15,161	99,750	2.8
Slovakia	194	177	205	185	62	55	91	81	144	111	228	160	1,693	0.0
Ukraine	690	654	471	309	282	154	218	235	223	411	650	702	4,999	0.1

## International Tourist Arrivals to Cambodia by Country of Residence in 2012

(by all mean of transportations)

Regions Country of Residence	2012												Total	share (%)
	Jan	Feb	Mar	Apr	May	Jun	Jul	Aug	Sep	Oct	Nov	Dec		2012*
<b>GRAND TOTAL</b>	<b>350,257</b>	<b>321,870</b>	<b>323,083</b>	<b>277,304</b>	<b>233,220</b>	<b>250,918</b>	<b>284,282</b>	<b>293,859</b>	<b>242,747</b>	<b>290,959</b>	<b>333,482</b>	<b>382,326</b>	<b>3,584,307</b>	<b>100.0</b>
<b>Southern Europe</b>	<b>5,422</b>	<b>4,784</b>	<b>4,387</b>	<b>4,579</b>	<b>2,207</b>	<b>2,252</b>	<b>4,615</b>	<b>10,010</b>	<b>3,237</b>	<b>4,391</b>	<b>5,944</b>	<b>5,743</b>	<b>57,571</b>	<b>1.6</b>
Croatia	109	61	84	27	29	28	45	86	18	26	100	92	705	0.0
Greece	121	96	83	103	43	31	77	171	75	60	70	143	1,073	0.0
Italy	2,998	2,630	1,987	1,077	786	713	1,244	3,817	884	1,264	2,353	2,872	22,625	0.6
Portugal	260	171	227	297	161	117	182	442	205	211	373	415	3,061	0.1
Serbia	71	29	33	24	19	12	22	24	20	58	49	50	411	0.0
Slovenia	130	142	123	72	39	24	51	49	16	46	100	147	939	0.0
Spain	1,399	1,337	1,555	2,749	957	1,155	2,834	5,195	1,888	2,087	2,597	1,596	25,349	0.7
Turkey	334	318	295	230	173	172	160	226	131	639	302	428	3,408	0.1
Other Europe	242	163	711	787	481	256	534	656	518	1,358	121	844	6,671	0.2
<b>Americas</b>	<b>29,182</b>	<b>24,316</b>	<b>24,904</b>	<b>18,865</b>	<b>16,188</b>	<b>16,472</b>	<b>18,039</b>	<b>14,278</b>	<b>12,721</b>	<b>17,647</b>	<b>24,693</b>	<b>26,986</b>	<b>244,291</b>	<b>6.8</b>
Argentina	853	663	447	571	290	189	171	172	171	315	371	287	4,500	0.1
Brazil	787	577	421	418	366	211	227	235	277	425	506	660	5,110	0.1
Canada	6,241	6,085	5,309	3,385	3,183	2,519	3,246	2,379	2,051	3,106	5,139	5,186	47,829	1.3
Chile	316	533	302	171	253	167	170	209	152	247	184	269	2,973	0.1
Colombia	135	55	102	130	77	230	99	149	125	133	110	152	1,497	0.0
Costa Rica	54	27	23	14	10	13	26	14	17	18	14	15	245	0.0
Ecuador	9	12	14	6	9	9	30	20	33	18	13	18	191	0.0
Mexico	331	207	356	329	328	324	523	205	206	358	498	499	4,164	0.1
Peru	52	42	57	51	39	38	46	37	36	55	66	57	576	0.0
United States	20,237	15,970	17,460	13,277	11,004	12,577	13,288	10,534	9,251	12,598	17,687	19,193	173,076	4.8
Uruguay	26	17	29	37	252	16	9	19	30	10	28	31	504	0.0
Other Americas	141	128	384	476	377	179	204	305	372	364	77	619	3,626	0.1
<b>Africa</b>	<b>540</b>	<b>414</b>	<b>449</b>	<b>373</b>	<b>374</b>	<b>355</b>	<b>439</b>	<b>443</b>	<b>425</b>	<b>558</b>	<b>410</b>	<b>846</b>	<b>5,626</b>	<b>0.2</b>
Cameroon	23	27	19	14	20	9	15	16	15	45	7	15	225	0.0
Congo	4	14	4	1	11	1	3	6	7	5	7	6	66	0.0
Ghana	14	18	26	9	15	12	6	11	9	10	9	10	149	0.0
Kenya	34	18	16	14	11	26	15	29	19	22	18	44	266	0.0
Liberia	9	12	14	8	11	11	1	6	4	6	8	4	94	0.0
Nigeria	39	78	50	38	47	30	56	54	42	46	50	40	570	0.0
Sudan	4	4	5	7	2	1	6	3	4	5	3	8	52	0.0
South Africa	379	212	240	251	225	228	256	254	234	305	278	668	3,530	0.1
Uganda	7	5	5	5	8	3	10	10	5	5	10	7	80	0.0
Other Africa	27	26	70	26	24	34	71	57	87	107	22	43	594	0.0
<b>Middle East</b>	<b>1,343</b>	<b>1,405</b>	<b>1,002</b>	<b>707</b>	<b>700</b>	<b>555</b>	<b>679</b>	<b>694</b>	<b>860</b>	<b>848</b>	<b>840</b>	<b>1,082</b>	<b>10,715</b>	<b>0.3</b>
Egypt	15	22	14	13	13	13	16	8	33	20	25	27	219	0.0
Iran	65	45	66	52	52	58	47	55	46	33	65	62	646	0.0
Iraq	4	11	10	6	6	14	4	6	10	5	4	3	83	0.0
Israel	1,105	1,229	720	534	534	252	425	482	570	621	606	843	7,921	0.2
Kuwait	81	53	34	23	23	135	61	38	72	77	66	49	712	0.0
Oman	17	1	10	10	10	26	5	16	14	12	18	11	150	0.0
Palestine	0	2	6	2	2	2	4	7	9	6	4	7	51	0.0
Qatar	2	1	31	5	5	3	4	3	4	3	5	4	70	0.0
Saudi Arabia	11	9	4	7	7	7	4	7	6	7	6	12	87	0.0
United Arab Emirates	11	11	25	27	27	15	19	18	29	23	19	19	243	0.0
Yemen	11	2	15	6	6	6	60	11	11	9	11	8	156	0.0
Other Middle East	21	19	67	22	15	24	30	43	56	32	11	37	377	0.0

## International Tourist Arrivals to Cambodia by Purpose of Visit in 2012

(by all mean of transportations)

Regions Country of Residence	2011	2012			Total	Female	share	change
		Purpose of Visit					(%)	(%)
		Holiday	Business	Other			2012*	2012*/11
<b>GRAND TOTAL</b>	<b>2,881,862</b>	<b>3,287,092</b>	<b>167,715</b>	<b>129,500</b>	<b>3,584,307</b>	<b>1,625,691</b>	<b>100.0</b>	<b>24.4</b>
<b>Asia and the Pacific</b>	<b>2,106,601</b>	<b>2,517,819</b>	<b>132,149</b>	<b>62,348</b>	<b>2,712,316</b>	<b>1,253,901</b>	<b>75.7</b>	<b>28.8</b>
<b>ASEAN</b>	<b>1,101,111</b>	<b>1,446,705</b>	<b>33,953</b>	<b>33,609</b>	<b>1,514,267</b>	<b>709,844</b>	<b>42.2</b>	<b>37.5</b>
Brunei Darussalam	481	799	15	150	964	376	0.0	100.4
Indonesia	15,817	19,249	2,696	599	22,544	7,343	0.6	42.5
Lao PDR	128,525	253,241	109	672	254,022	170,273	7.1	97.6
Malaysia	102,929	109,127	6,728	909	116,764	41,252	3.3	13.4
Myanmar	4,199	3,809	603	332	4,744	1,953	0.1	13.0
Philippines	70,718	90,226	6,238	1,023	97,487	57,831	2.7	37.9
Singapore	47,594	50,649	2,166	369	53,184	19,345	1.5	11.7
Thailand	116,758	183,824	8,556	9,042	201,422	91,973	5.6	72.5
Vietnam	614,090	735,781	6,842	20,513	763,136	319,498	21.3	24.3
<b>Eastern Asia</b>	<b>855,697</b>	<b>929,457</b>	<b>86,025</b>	<b>10,670</b>	<b>1,026,152</b>	<b>474,590</b>	<b>28.6</b>	<b>19.9</b>
China (RPC)	247,197	281,669	49,165	3,060	333,894	153,034	9.3	35.1
Hong Kong SAR	5,266	7,941	286	55	8,282	4,089	0.2	57.3
Japan	161,804	167,410	9,077	2,840	179,327	78,427	5.0	10.8
Korea (ROK)	342,810	392,373	15,938	3,180	411,491	199,808	11.5	20.0
Mongolia	257	280	30	37	347	175	0.0	35.0
Taiwan, China	98,363	79,784	11,529	1,498	92,811	39,057	2.6	-5.6
<b>Southern Asia</b>	<b>20,116</b>	<b>19,903</b>	<b>3,623</b>	<b>1,178</b>	<b>24,704</b>	<b>6,560</b>	<b>0.7</b>	<b>22.8</b>
Afghanistan	113	112	14	28	154	23	0.0	36.3
Bangladesh	1,316	1,028	204	135	1,367	174	0.0	3.9
Bhutan	81	98	7	29	134	27	0.0	65.4
India	15,240	15,852	2,480	667	18,999	5,439	0.5	24.7
Nepal	1,156	1,174	185	119	1,478	386	0.0	27.9
Pakistan	1,113	683	405	80	1,168	234	0.0	4.9
Srilanka	1,097	956	328	120	1,404	277	0.0	28.0
<b>Western Asia</b>	<b>1,945</b>	<b>2,200</b>	<b>199</b>	<b>21</b>	<b>2,420</b>	<b>1,327</b>	<b>0.1</b>	<b>24.4</b>
Kazakhstan	1,224	1,675	153	14	1,842	943	0.1	50.5
Uzbekistan	721	525	46	7	578	384	0.0	-19.8
<b>Oceania</b>	<b>121,602</b>	<b>114,362</b>	<b>6,796</b>	<b>15,721</b>	<b>136,879</b>	<b>58,577</b>	<b>3.8</b>	<b>12.6</b>
Australia	105,010	98,414	5,752	13,563	117,729	50,956	3.3	12.1
Fiji	117	79	14	13	106	35	0.0	-9.4
New Zealand	16,475	15,869	1,030	2,145	19,044	7,586	0.5	15.6
Other Asia & the Pacific	6,130	5,192	1,553	1,149	7,894	3,003	0.2	28.8
<b>Europe</b>	<b>542,863</b>	<b>560,584</b>	<b>22,614</b>	<b>28,161</b>	<b>611,359</b>	<b>261,624</b>	<b>17.1</b>	<b>12.6</b>
<b>Northern Europe</b>	<b>151,600</b>	<b>150,825</b>	<b>6,855</b>	<b>2,767</b>	<b>160,447</b>	<b>61,554</b>	<b>4.5</b>	<b>5.8</b>
Denmark	9,352	9,521	305	187	10,013	4,010	0.3	7.1
Finland	6,410	5,864	280	199	6,343	2,308	0.2	-1.0
Iceland	355	541	26	11	578	212	0.0	62.8
Ireland	8,541	8,377	359	129	8,865	3,574	0.2	3.8
Norway	8,128	7,833	230	188	8,251	3,268	0.2	1.5
Sweden	14,762	15,307	537	371	16,215	6,223	0.5	9.8
United Kingdom	104,052	103,382	5,118	1,682	110,182	41,959	3.1	5.9
<b>Western Europe</b>	<b>242,011</b>	<b>225,573</b>	<b>10,924</b>	<b>23,002</b>	<b>259,499</b>	<b>107,542</b>	<b>7.2</b>	<b>7.2</b>
Austria	7,601	7,596	199	353	8,148	3,264	0.2	7.2
Belgium	13,905	13,392	640	730	14,762	5,796	0.4	6.2
France	117,408	96,017	6,677	18,481	121,175	51,263	3.4	3.2
Germany	63,398	69,005	1,870	1,662	72,537	29,406	2.0	14.4
Luxembourg	497	451	8	15	474	168	0.0	-4.6
Monaco	82	51	2	2	55	27	0.0	-32.9
Netherlands	22,725	22,949	815	795	24,559	9,777	0.7	8.1
Switzerland	16,395	16,112	713	964	17,789	7,841	0.5	8.5
<b>Eastern Europe</b>	<b>91,593</b>	<b>124,800</b>	<b>1,763</b>	<b>608</b>	<b>127,171</b>	<b>65,689</b>	<b>3.5</b>	<b>38.8</b>
Bulgaria	470	668	18	10	696	365	0.0	48.1
Czech Republic	3,310	3,948	76	40	4,064	1,705	0.1	22.8
Estonia	954	975	27	20	1,022	439	0.0	7.1
Hungary	2,585	2,436	42	59	2,537	1,088	0.1	-1.9
Lithuania	1,238	1,051	27	11	1,089	540	0.0	-12.0
Poland	9,151	9,860	69	65	9,994	4,871	0.3	9.2
Romania	1,081	1,251	57	19	1,327	688	0.0	22.8
Russian Federation	67,747	98,270	1,217	263	99,750	52,879	2.8	47.2
Slovakia	1,269	1,538	109	46	1,693	652	0.0	33.4
Ukraine	3,788	4,803	121	75	4,999	2,462	0.1	32.0

### International Tourist Arrivals to Cambodia by Purpose of Visit in 2012

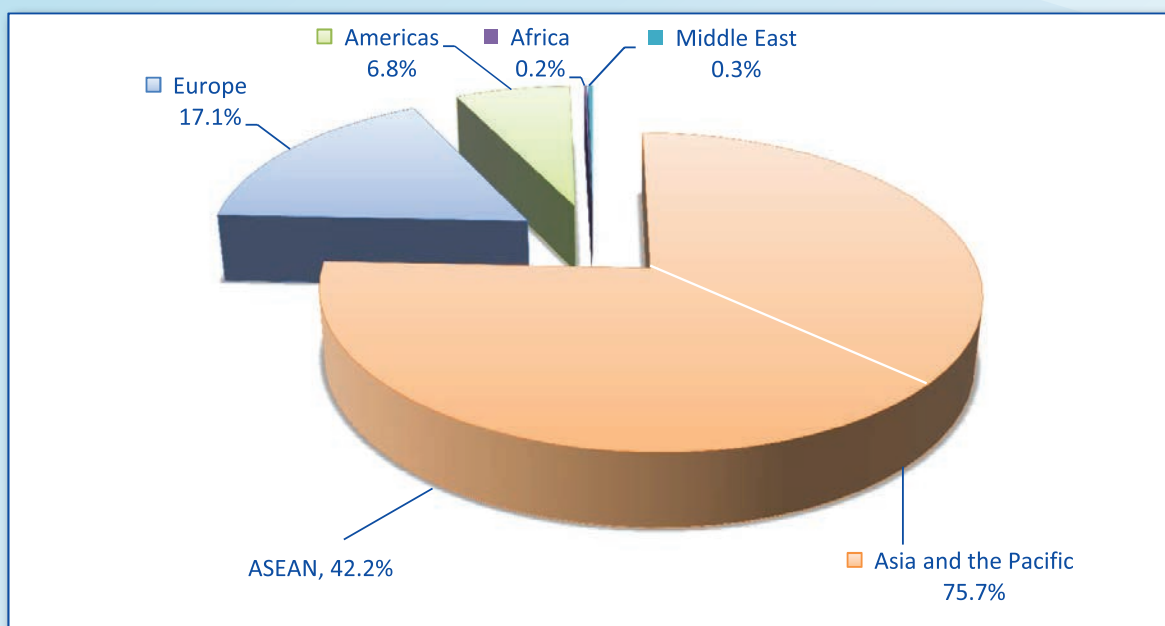
(by all mean of transportations)

Regions Country of Residence	2011		2012				share	change
		Purpose of Visit	Total	Female	share (%) 2012*	change (%) 2012*/11		
							Holiday	Business
<b>GRAND TOTAL</b>	<b>2,881,862</b>	<b>3,287,092</b>	<b>167,715</b>	<b>129,500</b>	<b>3,584,307</b>	<b>1,625,691</b>	<b>100.0</b>	<b>24.4</b>
<b>Southern Europe</b>	<b>52,308</b>	<b>55,346</b>	<b>1,449</b>	<b>776</b>	<b>57,571</b>	<b>24,148</b>	<b>1.6</b>	<b>10.1</b>
Croatia	532	665	18	22	705	323	0.0	32.5
Greece	1,168	1,026	20	27	1,073	382	0.0	-8.1
Italy	20,837	21,634	689	302	22,625	8,462	0.6	8.6
Portugal	3,081	2,975	61	25	3,061	1,445	0.1	-0.6
Serbia	408	373	24	14	411	178	0.0	0.7
Slovenia	874	902	31	6	939	375	0.0	7.4
Spain	22,123	24,676	375	298	25,349	11,938	0.7	14.6
Turkey	3,285	3,095	231	82	3,408	1,045	0.1	3.7
Other Europe	5,351	4,040	1,623	1,008	6,671	2,691	0.2	24.7
<b>Americas</b>	<b>217,500</b>	<b>193,987</b>	<b>11,859</b>	<b>38,445</b>	<b>244,291</b>	<b>104,515</b>	<b>6.8</b>	<b>12.3</b>
Argentina	5,223	4,365	36	99	4,500	2,119	0.1	-13.8
Brazil	3,616	4,998	45	67	5,110	2,464	0.1	41.3
Canada	42,462	40,619	2,109	5,101	47,829	20,787	1.3	12.6
Chile	2,633	2,867	79	27	2,973	1,421	0.1	12.9
Colombia	2,060	1,415	45	37	1,497	706	0.0	-27.3
Costa Rica	201	225	9	11	245	124	0.0	21.9
Ecuador	184	162	12	17	191	83	0.0	3.8
Mexico	3,486	4,060	65	39	4,164	2,059	0.1	19.4
Peru	483	535	23	18	576	249	0.0	19.3
United States	153,953	131,895	8,827	32,354	173,076	72,826	4.8	12.4
Uruguay	512	470	5	29	504	253	0.0	-1.6
Other Americas	2,687	2,376	604	646	3,626	1,424	0.1	34.9
<b>Africa</b>	<b>5,993</b>	<b>4,671</b>	<b>654</b>	<b>301</b>	<b>5,626</b>	<b>2,092</b>	<b>0.2</b>	<b>-6.1</b>
Cameroon	388	192	8	25	225	47	0.0	-42.0
Congo	157	50	5	11	66	15	0.0	-58.0
Ghana	415	113	17	19	149	14	0.0	-64.1
Kenya	283	201	24	41	266	112	0.0	-6.0
Liberia	335	82	5	7	94	25	0.0	-71.9
Nigeria	528	301	232	37	570	82	0.0	8.0
Sudan	48	37	8	7	52	12	0.0	8.3
South Africa	3,216	3,247	238	45	3,530	1,558	0.1	9.8
Uganda	299	54	11	15	80	32	0.0	-73.2
Other Africa	324	394	106	94	594	195	0.0	83.3
<b>Middle East</b>	<b>8,905</b>	<b>10,031</b>	<b>439</b>	<b>245</b>	<b>10,715</b>	<b>3,559</b>	<b>0.3</b>	<b>20.3</b>
Egypt	196	171	23	25	219	52	0.0	11.7
Iran	696	605	13	28	646	147	0.0	-7.2
Iraq	91	71	5	7	83	17	0.0	-8.8
Israel	6,644	7,584	269	68	7,921	3,068	0.2	19.2
Kuwait	530	696	5	11	712	41	0.0	34.3
Oman	107	131	6	13	150	19	0.0	40.2
Palestine	34	41	5	5	51	7	0.0	50.0
Qatar	62	62	4	4	70	27	0.0	12.9
Saudi Arabia	78	68	9	10	87	13	0.0	11.5
United Arab Emirates	155	221	11	11	243	22	0.0	56.8
Yemen	98	137	8	11	156	25	0.0	59.2
Other Middle East	214	244	81	52	377	121	0.0	76.2

**International Tourist Arrivals to Cambodia by Regions in 2012**

*(by all means of transportation)*

Months	Asia and the Pacific	ASEAN	Europe	Americas	Africa	Middle East	Total
<b>Q1</b>	<b>704,195</b>	<b>337,249</b>	<b>207,460</b>	<b>78,402</b>	<b>1,403</b>	<b>3,750</b>	<b>995,210</b>
January	244,199	108,468	74,993	29,182	540	1,343	350,257
February	227,874	106,883	67,861	24,316	414	1,405	321,870
March	232,122	121,898	64,606	24,904	449	1,002	323,083
<b>Q2</b>	<b>605,997</b>	<b>375,131</b>	<b>100,856</b>	<b>51,525</b>	<b>1,102</b>	<b>1,962</b>	<b>761,442</b>
April	212,038	125,392	45,321	18,865	373	707	277,304
May	186,897	116,707	29,061	16,188	374	700	233,220
June	207,062	133,032	26,474	16,472	355	555	250,918
<b>Q3</b>	<b>655,250</b>	<b>389,778</b>	<b>117,060</b>	<b>45,038</b>	<b>1,307</b>	<b>2,233</b>	<b>820,888</b>
July	223,189	135,329	41,936	18,039	439	679	284,282
August	230,850	132,977	47,594	14,278	443	694	293,859
September	201,211	121,472	27,530	12,721	425	860	242,747
<b>Q4</b>	<b>746,874</b>	<b>412,109</b>	<b>185,983</b>	<b>69,326</b>	<b>1,814</b>	<b>2,770</b>	<b>1,006,767</b>
October	229,830	131,890	42,076	17,647	558	848	290,959
November	236,753	131,595	70,786	24,693	410	840	333,482
December	280,291	148,624	73,121	26,986	846	1,082	382,326
<b>Total</b>	<b>2,712,316</b>	<b>1,514,267</b>	<b>611,359</b>	<b>244,291</b>	<b>5,626</b>	<b>10,715</b>	<b>3,584,307</b>
share (%)	75.7	42.2	17.1	6.8	0.2	0.3	100.0



**International Tourist Arrivals to Cambodia by Mode of Arrivals in 2011 - 2012**

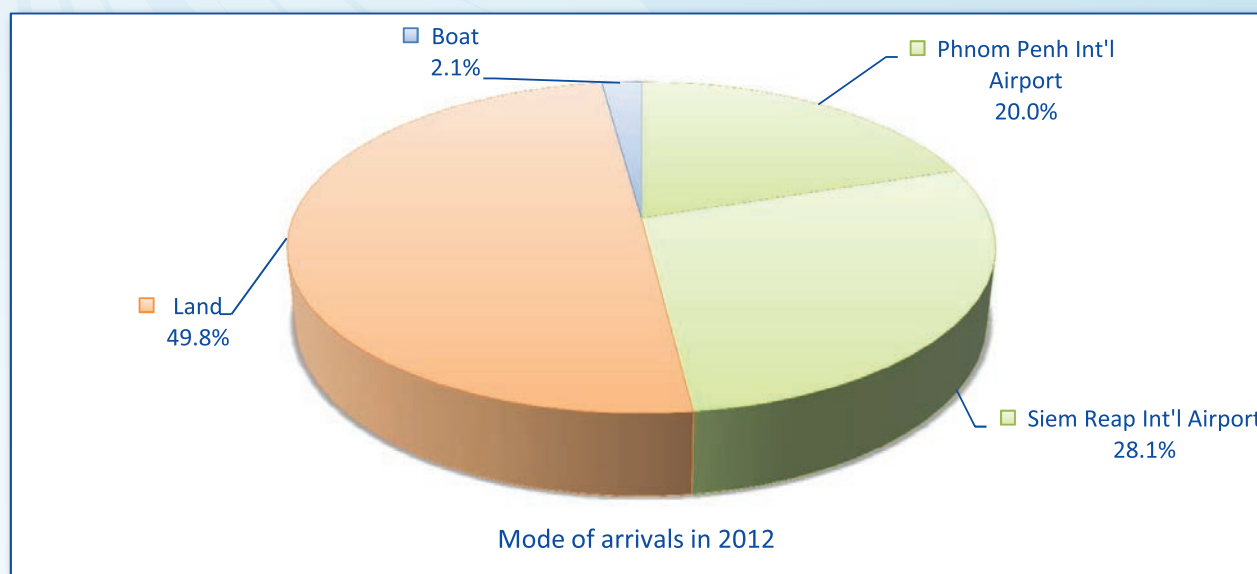
(by all means of transportation)

Months	2011				2012				change (%) 11*/10
	Air	Land	Boat	Total	Air	Land	Boat	Total	
<b>Q1</b>	<b>427,429</b>	<b>325,608</b>	<b>25,430</b>	<b>778,467</b>	<b>513,756</b>	<b>445,420</b>	<b>36,034</b>	<b>995,210</b>	<b>27.8</b>
January	152,181	114,179	8,111	274,471	185,499	153,385	11,373	350,257	27.6
February	145,008	102,767	7,724	255,499	168,148	142,295	11,427	321,870	26.0
March	130,240	108,662	9,595	248,497	160,109	149,740	13,234	323,083	30.0
<b>Q2</b>	<b>286,944</b>	<b>303,929</b>	<b>15,689</b>	<b>606,562</b>	<b>337,123</b>	<b>414,480</b>	<b>9,839</b>	<b>761,442</b>	<b>25.5</b>
April	106,665	108,624	7,743	223,032	126,282	147,325	3,697	277,304	24.3
May	90,269	95,915	4,074	190,258	104,398	126,637	2,185	233,220	22.6
June	90,010	99,390	3,872	193,272	106,443	140,518	3,957	250,918	29.8
<b>Q3</b>	<b>335,287</b>	<b>345,590</b>	<b>18,883</b>	<b>699,760</b>	<b>370,541</b>	<b>439,904</b>	<b>10,443</b>	<b>820,888</b>	<b>17.3</b>
July	116,342	116,376	6,809	239,527	126,405	154,519	3,358	284,282	18.7
August	123,666	118,913	7,850	250,429	135,960	153,587	4,312	293,859	17.3
September	95,279	110,301	4,224	209,804	108,176	131,798	2,773	242,747	15.7
<b>Q4</b>	<b>430,747</b>	<b>345,184</b>	<b>21,142</b>	<b>797,073</b>	<b>500,663</b>	<b>485,922</b>	<b>20,182</b>	<b>1,006,767</b>	<b>26.3</b>
October	118,822	108,501	5,867	233,190	140,908	146,167	3,884	290,959	24.8
November	149,415	107,173	8,951	265,539	168,833	156,776	7,873	333,482	25.6
December	162,510	129,510	6,324	298,344	190,922	182,979	8,425	382,326	28.1
<b>Total</b>	<b>1,480,407</b>	<b>1,320,311</b>	<b>81,144</b>	<b>2,881,862</b>	<b>1,722,083</b>	<b>1,785,726</b>	<b>76,498</b>	<b>3,584,307</b>	<b>24.4</b>

**International Tourist Arrivals to Cambodia by Mode of Arrivals in 2007 - 2012**

(by all means of transportation)

Mode of arrivals	Int'l tourist arrivals						share (%) 2012*	change (%) 12*/11
	2007	2008	2009	2010	2011	2012		
<b>Air</b>	<b>1,296,513</b>	<b>1,239,407</b>	<b>1,111,729</b>	<b>1,304,300</b>	<b>1,480,407</b>	<b>1,722,083</b>	<b>48.0</b>	<b>16.3</b>
Phnom Penh Int'l Airport	535,262	570,903	527,745	591,628	645,235	716,584	20.0	11.1
Siem Reap Int'l Airport	761,251	668,504	583,984	712,672	835,172	1,005,499	28.1	20.4
<b>Land &amp; waterways</b>	<b>718,615</b>	<b>886,058</b>	<b>1,049,848</b>	<b>1,203,988</b>	<b>1,401,455</b>	<b>1,862,224</b>	<b>52.0</b>	<b>32.9</b>
Land	674,927	814,169	971,539	1,125,974	1,320,311	1,785,726	49.8	35.3
Boat	43,688	71,889	78,309	78,014	81,144	76,498	2.1	-5.7
<b>Total</b>	<b>2,015,128</b>	<b>2,125,465</b>	<b>2,161,577</b>	<b>2,508,288</b>	<b>2,881,862</b>	<b>3,584,307</b>	<b>100.0</b>	<b>24.4</b>



## International Tourist Arrivals to Cambodia by Country of Residence in 2008 - 2012

(by all mean of transportations)

Regions Country of Residence	Full year					share (%) 2012*	change (%)				
	2008	2009	2010	2011	2012		08/07	09/08	10/09	11/10	12*/11
<b>GRAND TOTAL</b>	<b>2,125,465</b>	<b>2,161,577</b>	<b>2,508,289</b>	<b>2,881,862</b>	<b>3,584,307</b>	<b>100.0</b>	<b>5.5</b>	<b>1.7</b>	<b>16.0</b>	<b>14.9</b>	<b>24.4</b>
<b>Asia and the Pacific</b>	<b>1,451,701</b>	<b>1,483,381</b>	<b>1,807,398</b>	<b>2,106,601</b>	<b>2,712,316</b>	<b>75.7</b>	<b>3.8</b>	<b>2.2</b>	<b>21.8</b>	<b>16.6</b>	<b>28.8</b>
<b>ASEAN</b>	<b>676,492</b>	<b>808,661</b>	<b>962,570</b>	<b>1,101,111</b>	<b>1,514,267</b>	<b>42.2</b>	<b>22.4</b>	<b>19.5</b>	<b>19.0</b>	<b>14.4</b>	<b>37.5</b>
Brunei Darussalam	356	406	460	481	964	0.0	4.7	14.0	13.3	4.6	100.4
Indonesia	9,198	9,585	12,636	15,817	22,544	0.6	7.7	4.2	31.8	25.2	42.5
Lao PDR	60,933	102,313	92,276	128,525	254,022	7.1	164.2	67.9	-9.8	39.3	97.6
Malaysia	80,738	77,759	89,952	102,929	116,764	3.3	-3.9	-3.7	15.7	14.4	13.4
Myanmar	2,461	2,316	2,614	4,199	4,744	0.1	38.2	-5.9	12.9	60.6	13.0
Philippines	39,294	49,079	56,156	70,718	97,487	2.7	33.0	24.9	14.4	25.9	37.9
Singapore	40,945	41,273	45,079	47,594	53,184	1.5	14.4	0.8	9.2	5.6	11.7
Thailand	233,051	159,036	149,108	116,758	201,422	5.6	-4.5	-31.8	-6.2	-21.7	72.5
Vietnam	209,516	366,894	514,289	614,090	763,136	21.3	67.0	75.1	40.2	19.4	24.3
<b>Eastern Asia</b>	<b>646,432</b>	<b>548,422</b>	<b>715,045</b>	<b>855,697</b>	<b>1,026,152</b>	<b>28.6</b>	<b>-11.6</b>	<b>-15.2</b>	<b>30.4</b>	<b>19.7</b>	<b>19.9</b>
China (RPC)	129,626	128,210	177,636	247,197	333,894	9.3	9.5	-1.1	38.6	39.2	35.1
Hong Kong SAR	3,320	3,888	4,378	5,266	8,282	0.2	21.6	17.1	12.6	20.3	57.3
Japan	163,806	146,286	151,795	161,804	179,327	5.0	1.1	-10.7	3.8	6.6	10.8
Korea (ROK)	266,525	197,725	289,702	342,810	411,491	11.5	-19.2	-25.8	46.5	18.3	20.0
Mongolia	155	194	305	257	347	0.0	-14.8	25.2	57.2	-15.7	35.0
Taiwan, China	83,000	72,119	91,229	98,363	92,811	2.6	-29.8	-13.1	26.5	7.8	-5.6
<b>Southern Asia</b>	<b>15,452</b>	<b>15,975</b>	<b>18,584</b>	<b>20,116</b>	<b>24,704</b>	<b>0.7</b>	<b>9.3</b>	<b>3.4</b>	<b>16.3</b>	<b>8.2</b>	<b>22.8</b>
Afghanistan	40	126	180	113	154	0.0	21.2	215.0	42.9	-37.2	36.3
Bangladesh	708	925	1,658	1,316	1,367	0.0	7.4	30.6	79.2	-20.6	3.9
Bhutan				81	134	0.0					65.4
India	12,467	12,461	13,542	15,240	18,999	0.5	8.8	0.0	8.7	12.5	24.7
Nepal	929	908	1,081	1,156	1,478	0.0	27.3	-2.3	19.1	6.9	27.9
Pakistan	577	798	1,092	1,113	1,168	0.0	2.5	38.3	36.8	1.9	4.9
Srilanka	731	757	1,031	1,097	1,404	0.0	4.4	3.6	36.2	6.4	28.0
<b>Western Asia</b>	<b>0</b>	<b>0</b>	<b>0</b>	<b>1,945</b>	<b>2,420</b>	<b>0.1</b>					<b>24.4</b>
Kazakhstan				1,224	1,842	0.1					50.5
Uzbekistan				721	578	0.0					-19.8
<b>Oceania</b>	<b>99,087</b>	<b>98,678</b>	<b>107,306</b>	<b>121,602</b>	<b>136,879</b>	<b>3.8</b>	<b>18.0</b>	<b>-0.4</b>	<b>8.7</b>	<b>13.3</b>	<b>12.6</b>
Australia	84,957	84,581	93,598	105,010	117,729	3.3	18.6	-0.4	10.7	12.2	12.1
Fiji				117	106	0.0					-9.4
New Zealand	14,130	14,097	13,708	16,475	19,044	0.5	14.6	-0.2	-2.8	20.2	15.6
Other Asia & the Pacific	14,238	11,645	3,893	6,130	7,894	0.2	-13.2	-18.2	-66.6	57.5	28.8
<b>Europe</b>	<b>457,471</b>	<b>464,742</b>	<b>489,400</b>	<b>542,863</b>	<b>611,359</b>	<b>17.1</b>	<b>11.4</b>	<b>1.6</b>	<b>5.3</b>	<b>10.9</b>	<b>12.6</b>
<b>Northern Europe</b>	<b>153,376</b>	<b>153,311</b>	<b>145,767</b>	<b>151,600</b>	<b>160,447</b>	<b>4.5</b>	<b>14.5</b>	<b>0.0</b>	<b>-4.9</b>	<b>4.0</b>	<b>5.8</b>
Denmark	9,371	8,937	7,810	9,352	10,013	0.3	10.5	-4.6	-12.6	19.7	7.1
Finland	6,833	6,559	5,244	6,410	6,343	0.2	21.2	-4.0	-20.0	22.2	-1.0
Iceland	274	183	229	355	578	0.0	28.0	-33.2	25.1	55.0	62.8
Ireland	11,255	9,037	8,567	8,541	8,865	0.2	9.7	-19.7	-5.2	-0.3	3.8
Norway	7,875	7,017	7,774	8,128	8,251	0.2	18.8	-10.9	10.8	4.6	1.5
Sweden	19,675	14,741	13,076	14,762	16,215	0.5	5.7	-25.1	-11.3	12.9	9.8
United Kingdom	98,093	106,837	103,067	104,052	110,182	3.1	16.6	8.9	-3.5	1.0	5.9
<b>Western Europe</b>	<b>215,227</b>	<b>226,057</b>	<b>238,812</b>	<b>242,011</b>	<b>259,499</b>	<b>7.2</b>	<b>9.5</b>	<b>5.0</b>	<b>5.6</b>	<b>1.3</b>	<b>7.2</b>
Austria	7,276	8,681	8,547	7,601	8,148	0.2	7.1	19.3	-1.5	-11.1	7.2
Belgium	13,179	12,980	14,295	13,905	14,762	0.4	9.5	-1.5	10.1	-2.7	6.2
France	97,517	105,437	113,285	117,408	121,175	3.4	8.2	8.1	7.4	3.6	3.2
Germany	59,903	59,916	62,864	63,398	72,537	2.0	12.8	0.0	4.9	0.8	14.4
Luxembourg	486	472	639	497	474	0.0	-0.6	-2.9	35.4	-22.2	-4.6
Monaco				82	55	0.0					-32.9
Netherlands	22,408	22,058	23,537	22,725	24,559	0.7	7.9	-1.6	6.7	-3.4	8.1
Switzerland	14,458	16,513	15,645	16,395	17,789	0.5	8.8	14.2	-5.3	4.8	8.5
<b>Eastern Europe</b>	<b>30,219</b>	<b>34,457</b>	<b>54,401</b>	<b>91,593</b>	<b>127,171</b>	<b>3.5</b>	<b>38.1</b>	<b>14.0</b>	<b>57.9</b>	<b>68.4</b>	<b>38.8</b>
Bulgaria	322	384	445	470	696	0.0	-79.9	19.3	15.9	5.6	48.1
Czech Republic	2,147	2,649	3,113	3,310	4,064	0.1	12.6	23.4	17.5	6.3	22.8
Estonia				954	1,022	0.0					7.1
Hungary	2,193	2,184	2,740	2,585	2,537	0.1	-2.4	-0.4	25.5	-5.7	-1.9
Lithuania				1,238	1,089	0.0					-12.0
Poland	5,630	6,319	8,712	9,151	9,994	0.3	44.5	12.2	37.9	5.0	9.2
Romania	569	774	1,171	1,081	1,327	0.0	34.8	36.0	51.3	-7.7	22.8
Russian Federation	16,927	19,395	34,170	67,747	99,750	2.8	70.6	14.6	76.2	98.3	47.2
Slovakia	762	895	1,286	1,269	1,693	0.0	28.3	17.5	43.7	-1.3	33.4
Ukraine	1,669	1,857	2,764	3,788	4,999	0.1	29.4	11.3	48.8	37.0	32.0

## International Tourist Arrivals to Cambodia by Country of Residence in 2008 - 2012

(by all mean of transportations)

Regions Country of Residence	Full year					share (%) 2012*	change (%)				
	2008	2009	2010	2011	2012		08/07	09/08	10/09	11/10	12*/11
<b>GRAND TOTAL</b>	<b>2,125,465</b>	<b>2,161,577</b>	<b>2,508,289</b>	<b>2,881,862</b>	<b>3,584,307</b>	<b>100.0</b>	<b>5.5</b>	<b>1.7</b>	<b>16.0</b>	<b>14.9</b>	<b>24.4</b>
<b>Southern Europe</b>	<b>44,795</b>	<b>40,145</b>	<b>47,134</b>	<b>52,308</b>	<b>57,571</b>	<b>1.6</b>	<b>6.7</b>	<b>-10.4</b>	<b>17.4</b>	<b>11.0</b>	<b>10.1</b>
Croatia	355	313	470	532	705	0.0	64.4	-11.8	50.2	13.2	32.5
Greece	1,441	1,406	1,395	1,168	1,073	0.0	11.6	-2.4	-0.8	-16.3	-8.1
Italy	19,516	17,154	19,808	20,837	22,625	0.6	8.0	-12.1	15.5	5.2	8.6
Portugal	2,284	2,481	2,554	3,081	3,061	0.1	-10.1	8.6	2.9	20.6	-0.6
Serbia				408	411	0.0					0.7
Slovenia	891	740	692	874	939	0.0	39.4	-16.9	-6.5	26.3	7.4
Spain	18,344	16,311	19,163	22,123	25,349	0.7	4.3	-11.1	17.5	15.4	14.6
Turkey	1,964	1,740	3,052	3,285	3,408	0.1	19.9	-11.4	75.4	7.6	3.7
Other Europe	13,854	10,772	3,286	5,351	6,671	0.2	-14.4	-22.2	-69.5	62.8	24.7
<b>Americas</b>	<b>204,878</b>	<b>201,130</b>	<b>199,089</b>	<b>217,500</b>	<b>244,291</b>	<b>6.8</b>	<b>5.2</b>	<b>-1.8</b>	<b>-1.0</b>	<b>9.2</b>	<b>12.3</b>
Argentina	1,645	1,717	2,212	5,223	4,500	0.1	41.6	4.4	28.8	136.1	-13.8
Brazil	2,058	2,204	2,490	3,616	5,110	0.1	29.8	7.1	13.0	45.2	41.3
Canada	36,891	36,340	38,718	42,462	47,829	1.3	8.5	-1.5	6.5	9.7	12.6
Chile	1,639	1,943	2,240	2,633	2,973	0.1	3.7	18.5	15.3	17.5	12.9
Colombia	785	942	1,060	2,060	1,497	0.0	13.8	20.0	12.5	94.3	-27.3
Costa Rica				201	245	0.0					21.9
Ecuador				184	191	0.0					3.8
Mexico	3,379	2,722	3,157	3,486	4,164	0.1	-1.7	-19.4	16.0	10.4	19.4
Peru	388	422	468	483	576	0.0	15.5	8.8	10.9	3.2	19.3
United States	145,079	148,482	146,005	153,953	173,076	4.8	5.5	2.3	-1.7	5.4	12.4
Uruguay	167	313	333	512	504	0.0	-37.9	87.4	6.4	53.8	-1.6
Other Americas	12,847	6,045	2,406	2,687	3,626	0.1	-8.9	-52.9	-60.2	11.7	34.9
<b>Africa</b>	<b>4,040</b>	<b>5,403</b>	<b>4,627</b>	<b>5,993</b>	<b>5,626</b>	<b>0.2</b>	<b>23.5</b>	<b>33.7</b>	<b>-14.4</b>	<b>29.5</b>	<b>-6.1</b>
Cameroon	340	1,051	493	388	225	0.0	155.6	209.1	-53.1	-21.3	-42.0
Congo				157	66	0.0					-58.0
Ghana	132	624	503	415	149	0.0	-14.3	372.7	-19.4	-17.5	-64.1
Kenya				283	266	0.0					-6.0
Liberia				335	94	0.0					-71.9
Nigeria	999	1,100	769	528	570	0.0	58.8	10.1	-30.1	-31.3	8.0
Sudan	38	32	37	48	52	0.0	533.3	-15.8	15.6	29.7	8.3
South Africa	2,180	2,104	2,459	3,216	3,530	0.1	21.2	-3.5	16.9	30.8	9.8
Uganda				299	80	0.0					-73.2
Other Africa	351	492	366	324	594	0.0	-36.2	40.2	-25.6	-11.5	83.3
<b>Middle East</b>	<b>7,375</b>	<b>6,921</b>	<b>7,775</b>	<b>8,905</b>	<b>10,715</b>	<b>0.3</b>	<b>-7.0</b>	<b>-6.2</b>	<b>12.3</b>	<b>14.5</b>	<b>20.3</b>
Egypt	155	173	220	196	219	0.0	101.3	11.6	27.2	-10.9	11.7
Iran	297	338	518	696	646	0.0	-28.4	13.8	53.3	34.4	-7.2
Iraq				91	83	0.0					-8.8
Israel	6,131	5,439	6,186	6,644	7,921	0.2	-5.0	-11.3	13.7	7.4	19.2
Kuwait	472	633	543	530	712	0.0	15.1	34.1	-14.2	-2.4	34.3
Oman				107	150	0.0					40.2
Palestine				34	51	0.0					50.0
Qatar				62	70	0.0					12.9
Saudi Arabia	52	48	64	78	87	0.0	-44.1	-7.7	33.3	21.9	11.5
United Arab Emirates				155	243	0.0					56.8
Yemen				98	156	0.0					59.2
Other Middle East	268	290	244	214	377	0.0	-44.1	8.2	-15.9	-12.3	76.2



Top Ten Generating Market from 2007 - 2012

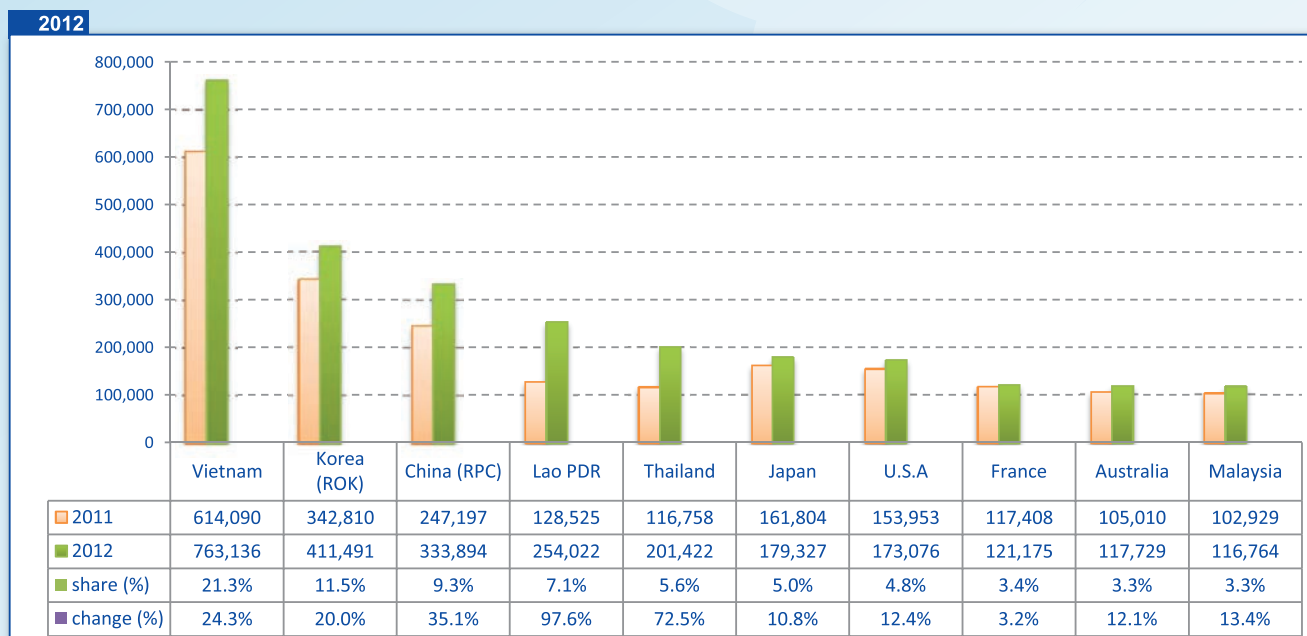
2007				
rank		arrivals	share (%)	change (%)
1	Korea	329,909	16.4	15.6
2	Japan	161,973	8.0	2.3
3	USA	137,539	6.8	11.1
4	Vietnam	125,442	6.2	61.8
5	China	118,417	5.9	47.0
6	Taiwan, China	118,180	5.9	38.8
7	Thailand	101,590	5.0	32.0
8	France	90,168	4.5	25.3
9	United Kingdom	84,103	4.2	14.0
10	Malaysia	84,039	4.2	9.1

2008				
rank		arrivals	share (%)	change (%)
1	Korea	266,525	12.5	-19.2
2	Vietnam	209,516	9.9	67.0
3	Japan	163,806	7.7	1.1
4	USA	145,079	6.8	5.5
5	China	129,626	6.1	9.5
6	Thailand	109,020	5.1	7.3
7	United Kingdom	98,093	4.6	8.8
8	France	97,517	4.6	16.0
9	Australia	84,957	4.0	18.6
10	Taiwan, China	83,000	3.9	-29.8

2009				
rank		arrivals	share (%)	change (%)
1	Vietnam	316,202	14.6	50.9
2	Korea	197,725	9.2	-25.8
3	U.S.A	148,482	6.9	2.4
4	Japan	146,286	6.8	-10.7
5	China	128,210	5.9	-1.1
6	United Kingdom	106,837	4.9	8.9
7	France	105,437	4.9	8.1
8	Thailand	102,018	4.7	-6.4
9	Lao PDR	94,181	4.4	54.6
10	Australia	84,581	3.9	-0.4

2010				
rank		arrivals	share (%)	change (%)
1	Vietnam	514,289	20.5	62.6
2	Korea	289,702	11.6	46.5
3	China	177,636	7.1	38.6
4	Japan	151,795	6.1	3.8
5	Thailand	149,108	5.9	16.3
6	U.S.A	146,005	5.8	-1.7
7	France	113,285	4.5	7.4
8	U.K	103,067	4.1	-3.5
9	Australia	93,598	3.7	10.7
10	Taiwan, China	91,229	3.6	26.5

2011				
rank		arrivals	share (%)	change (%)
1	Vietnam	614,090	21.3	19.4
2	Korea	342,810	11.9	18.3
3	China	247,197	8.6	39.2
4	Japan	161,804	5.6	6.6
5	U.S.A	153,953	5.3	5.4
6	Lao PDR	128,525	4.5	39.3
7	France	117,408	4.1	3.6
8	Thailand	116,758	4.1	-21.7
9	Australia	105,010	3.6	12.2
10	U.K	104,052	3.6	1.0



## International Tourist Arrivals to Cambodia by International Border Check-points in 2012

No. International border check-points	Months												TOTAL	share (%)
	Jan	Feb	Mar	Apr	May	Jun	Jul	Aug	Sep	Oct	Nov	Dec		
<b>Grand Total</b>	<b>350,257</b>	<b>321,870</b>	<b>323,083</b>	<b>277,304</b>	<b>233,220</b>	<b>250,918</b>	<b>284,282</b>	<b>293,859</b>	<b>242,747</b>	<b>290,959</b>	<b>333,482</b>	<b>382,326</b>	<b>3,584,307</b>	<b>100.0</b>
<b>Air</b>	<b>185,499</b>	<b>168,148</b>	<b>160,109</b>	<b>126,282</b>	<b>104,398</b>	<b>106,443</b>	<b>126,405</b>	<b>135,960</b>	<b>108,176</b>	<b>140,908</b>	<b>168,833</b>	<b>190,922</b>	<b>1,722,083</b>	<b>48.0</b>
Phnom Penh Int'l Airport	65,956	59,122	62,330	53,883	47,636	54,359	60,057	57,016	50,023	60,437	70,588	75,177	716,584	20.0
Siem Reap Int'l Airport	119,543	109,026	97,779	72,399	56,762	52,084	66,348	78,944	58,153	80,471	98,245	115,745	1,005,499	28.1
<b>Lands and Water ways</b>	<b>164,758</b>	<b>153,722</b>	<b>162,974</b>	<b>151,022</b>	<b>128,822</b>	<b>144,475</b>	<b>157,877</b>	<b>157,899</b>	<b>134,571</b>	<b>150,051</b>	<b>164,649</b>	<b>191,404</b>	<b>1,862,224</b>	<b>52.0</b>
Lands	153,385	142,295	149,740	147,325	126,637	140,518	154,519	153,587	131,798	146,167	156,776	182,979	1,785,726	49.8
Water ways	11,373	11,427	13,234	3,697	2,185	3,957	3,358	4,312	2,773	3,884	7,873	8,425	76,498	2.1
<b>1 Cambodia - Thailand</b>	<b>86,476</b>	<b>79,698</b>	<b>90,841</b>	<b>77,493</b>	<b>69,959</b>	<b>73,101</b>	<b>78,343</b>	<b>86,898</b>	<b>77,954</b>	<b>91,207</b>	<b>96,820</b>	<b>117,865</b>	<b>1,026,655</b>	<b>28.6</b>
Poi Pet	53,824	48,319	50,260	45,576	38,880	38,982	44,879	49,048	37,438	46,545	51,133	63,394	568,278	15.9
Cham Yeam	4,418	3,768	2,860	2,968	2,314	1,985	2,718	2,315	2,084	2,723	3,099	4,478	35,730	1.0
Prom	8,517	7,850	9,379	8,684	8,953	9,412	7,735	10,819	11,714	12,570	13,549	15,311	124,493	3.5
Daung	12,216	12,790	17,418	15,635	17,440	18,350	20,460	20,951	22,561	23,577	23,399	26,623	231,420	6.5
O'Smach	1,980	1,176	2,030	2,009	1,437	1,196	1,503	2,460	2,176	2,808	3,737	3,234	25,746	0.7
Chorm	1,737	1,773	1,767	2,621	935	1,220	1,048	1,305	1,897	2,865	1,348	2,188	20,704	0.6
Sihanoukville (Int'l sea port)	3,784	4,022	7,127	0	0	1,956	0	0	84	119	555	2,637	20,284	0.6
<b>2 Cambodia - Vietnam</b>	<b>74,848</b>	<b>68,059</b>	<b>67,581</b>	<b>69,627</b>	<b>55,900</b>	<b>68,110</b>	<b>75,947</b>	<b>67,216</b>	<b>54,437</b>	<b>56,548</b>	<b>63,904</b>	<b>69,444</b>	<b>791,621</b>	<b>22.1</b>
Bavet	45,104	38,580	43,909	45,789	37,526	48,766	51,719	46,444	36,353	36,544	39,017	43,270	513,021	14.3
Phnom Den	4,201	3,676	3,060	4,726	2,604	2,897	4,796	3,472	2,285	3,194	2,697	3,853	41,461	1.2
Trapaing Plong	3,195	2,922	2,252	3,155	2,071	2,898	3,503	1,962	2,552	2,377	2,383	3,223	32,493	0.9
Trapaing Sré	6,179	7,414	4,147	4,187	4,028	4,080	4,761	3,809	3,293	3,452	3,806	3,372	52,528	1.5
Prek Chak	3,612	3,247	2,824	2,742	2,123	2,312	2,170	1,929	2,034	1,692	2,491	2,857	30,033	0.8
Oya Dao	2,134	2,713	3,584	3,594	3,952	3,449	3,749	3,336	3,347	3,520	3,977	4,559	41,914	1.2
Banteay Chak Krey	1,767	1,511	1,228	1,308	1,151	1,259	1,459	1,402	1,277	1,362	1,437	1,847	17,008	0.5
Prey Vor	1,067	591	470	429	260	448	432	550	607	642	778	675	6,949	0.2
Kaam Samnor	6,807	6,480	5,241	3,300	2,185	1,818	2,671	3,846	1,873	2,587	6,017	4,863	47,688	1.3
Phnom Penh Port	782	925	866	397	0	183	687	466	816	1,178	1,301	925	8,526	0.2
<b>3 Cambodia - Lao</b>	<b>3,434</b>	<b>5,965</b>	<b>4,552</b>	<b>3,902</b>	<b>2,963</b>	<b>3,264</b>	<b>3,587</b>	<b>3,785</b>	<b>2,180</b>	<b>2,296</b>	<b>3,925</b>	<b>4,095</b>	<b>43,948</b>	<b>1.2</b>
Trapaing Kreal	3,434	5,965	4,552	3,902	2,963	3,264	3,587	3,785	2,180	2,296	3,925	4,095	43,948	1.2

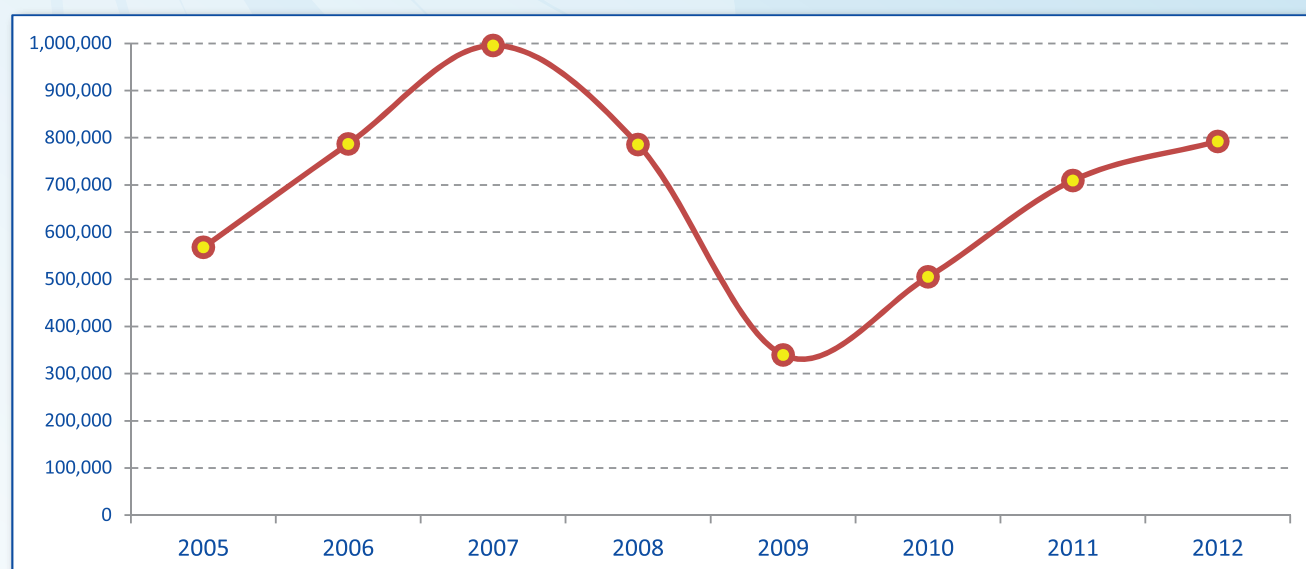
### International Tourist Arrivals to Cambodia by International Border Check-points in 2012 (by purpose of visit)

International Border No. Check-points	2011	2012			Total	share (%) 2012*	change (%) 2012*/11
		Purpose of Visit					
		Holiday	Business	Other			
<b>Grand Total</b>	<b>2,881,862</b>	<b>3,264,659</b>	<b>164,303</b>	<b>155,345</b>	<b>3,584,307</b>	<b>100.0</b>	<b>24.4</b>
<b>Air</b>	<b>1,480,407</b>	<b>1,508,102</b>	<b>113,259</b>	<b>100,722</b>	<b>1,722,083</b>	<b>48.0</b>	<b>16.3</b>
Phnom Penh Int'l Airport	645,235	527,613	106,307	82,664	716,584	20.0	11.1
Siem Reap Int'l Airport	835,172	980,489	6,952	18,058	1,005,499	28.1	20.4
<b>Lands and Water ways</b>	<b>1,401,455</b>	<b>1,756,557</b>	<b>51,044</b>	<b>54,623</b>	<b>1,862,224</b>	<b>52.0</b>	<b>32.9</b>
Lands	1,320,311	1,683,425	51,005	51,296	1,785,726	49.8	35.3
Water ways	81,144	73,132	39	3,327	76,498	2.1	-5.7
<b>1 Cambodia - Thailand</b>	<b>647,510</b>	<b>984,976</b>	<b>22,786</b>	<b>18,893</b>	<b>1,026,655</b>	<b>28.6</b>	<b>58.6</b>
Poi Pet	415,091	538,192	17,755	12,331	568,278	15.9	36.9
Cham Yeam	28,312	29,653	4,202	1,875	35,730	1.0	26.2
Prom	60,324	122,083	439	1,971	124,493	3.5	106.4
Daung	112,135	229,612	140	1,668	231,420	6.5	106.4
O'Smach	10,739	25,369	178	199	25,746	0.7	139.7
Chorm	9,818	19,783	72	849	20,704	0.6	110.9
Sihanoukville (Int'l sea port)	11,091	20,284			20,284	0.6	82.9
<b>2 Cambodia - Vietnam</b>	<b>714,695</b>	<b>728,341</b>	<b>28,032</b>	<b>35,248</b>	<b>791,621</b>	<b>22.1</b>	<b>10.8</b>
Bavet	440,444	476,022	24,288	12,711	513,021	14.3	16.5
Phnom Den	34,772	37,473	382	3,606	41,461	1.2	19.2
Trapaing Plong	29,831	30,100	623	1,770	32,493	0.9	8.9
Trapaing Sré	60,461	44,237	212	8,079	52,528	1.5	-13.1
Prek Chak	28,833	26,602	1,901	1,530	30,033	0.8	4.2
Oya Dao	22,109	40,002	317	1,595	41,914	1.2	89.6
Banteay Chak Krey	15,098	14,719	244	2,045	17,008	0.5	12.7
Prey Vor	13,094	6,338	26	585	6,949	0.2	-46.9
Kaam Samnor	64,029	44,322	39	3,327	47,688	1.3	-25.5
Phnom Penh Port	6,024	8,526			8,526	0.2	41.5
<b>3 Cambodia - Lao</b>	<b>39,250</b>	<b>43,240</b>	<b>226</b>	<b>482</b>	<b>43,948</b>	<b>1.2</b>	<b>12.0</b>
Trapaing Kreal	39,250	43,240	226	482	43,948	1.2	12.0

## Cambodian Outbound Tourism by Int'l Border Check-points in 2012

(by mode of transports and purpose of visit)

No. Check-points	International Border	2011	2012			Total	share (%) 2012*	change (%) 2012*/11
			Purpose of Visit					
			Holiday	Business	Other			
<b>Grand Total</b>		<b>709,616</b>	<b>767,573</b>	<b>0</b>	<b>24,825</b>	<b>792,398</b>	<b>100.0</b>	<b>11.7</b>
<b>Air</b>		<b>170,950</b>	<b>179,803</b>	<b>0</b>	<b>5,891</b>	<b>185,694</b>	<b>23.4</b>	<b>8.6</b>
Phnom Penh Int'l Airport		168,454	173,753		5,827	179,580	22.7	6.6
Siem Reap Int'l Airport		2,496	6,050		64	6,114	0.8	145.0
<b>Lands and Water ways</b>		<b>538,666</b>	<b>587,770</b>	<b>0</b>	<b>18,934</b>	<b>606,704</b>	<b>76.6</b>	<b>12.6</b>
Lands		537,436	586,019	0	18,934	604,953	76.3	12.6
Water ways		1,230	1,751	0	0	1,751	0.2	42.4
<b>1 Cambodia - Thailand</b>		<b>317,129</b>	<b>382,171</b>	<b>0</b>	<b>3,617</b>	<b>385,788</b>	<b>48.7</b>	<b>21.7</b>
Poi Pet		278,957	313,003		2,522	315,525	39.8	13.1
Cham Yeam		14,559	19,935		597	20,532	2.6	41.0
Prom		9,906	15,015		314	15,329	1.9	54.7
Daung		7,926	23,147		24	23,171	2.9	192.3
O'Smach		4,519	8,811		64	8,875	1.1	96.4
Chorm		1,262	2,260		96	2,356	0.3	86.7
<b>2 Cambodia - Vietnam</b>		<b>216,760</b>	<b>201,458</b>	<b>0</b>	<b>15,171</b>	<b>216,629</b>	<b>27.3</b>	<b>-0.1</b>
Bavet		196,031	179,266		13,661	192,927	24.3	-1.6
Phnom Den		5,894	5,631		219	5,850	0.7	-0.7
Trapaing Plong		5,275	5,344		536	5,880	0.7	11.5
Trapaing Sré		1,370	1,303		414	1,717	0.2	25.3
Prek Chak		4,310	4,932		75	5,007	0.6	16.2
Oya Dao		1,162	1,131		167	1,298	0.2	11.7
Banteay Chak Krey		1,488	1,774		80	1,854	0.2	24.6
Prey Vor		0	326		19	345	0.0	
Kaam Samnor		1,225	1,746			1,746	0.2	42.5
Phnom Penh Port		5	5			5	0.0	0.0
<b>3 Cambodia - Lao</b>		<b>4,777</b>	<b>4,141</b>	<b>0</b>	<b>146</b>	<b>4,287</b>	<b>0.5</b>	<b>-10.3</b>
Trapaing Kreal		4,777	4,141		146	4,287	0.5	-10.3



## International Outbound Tourism by Int'l Border Check Points in 2012

(by mode of transports and purpose of visit)

No.	International Border Check Points	2011		2012			share (%) 2012*	change (%) 2012*/11	
		Purpose of Visit							Total
		Holiday	Business	Other					
	<b>Grand Total</b>	<b>2,847,309</b>	<b>3,226,437</b>	<b>161,156</b>	<b>116,991</b>	<b>3,504,584</b>	<b>100.0</b>	<b>23.1</b>	
	<b>Air</b>	<b>1,491,306</b>	<b>1,510,335</b>	<b>115,244</b>	<b>88,480</b>	<b>1,714,059</b>	<b>48.9</b>	<b>14.9</b>	
	Phnom Penh Int'l Airport	659,822	534,467	107,195	82,196	723,858	20.7	9.7	
	Siem Reap Int'l Airport	831,484	975,868	8,049	6,284	990,201	28.3	19.1	
	<b>Lands and Water ways</b>	<b>1,356,003</b>	<b>1,716,102</b>	<b>45,912</b>	<b>28,511</b>	<b>1,790,525</b>	<b>51.1</b>	<b>32.0</b>	
	Lands	1,297,912	1,666,973	45,879	28,488	1,741,340	49.7	34.2	
	Water ways	58,091	49,129	33	23	49,185	1.4	-15.3	
<b>1</b>	<b>Cambodia - Thailand</b>	<b>686,488</b>	<b>984,499</b>	<b>20,271</b>	<b>11,143</b>	<b>1,015,913</b>	<b>29.0</b>	<b>48.0</b>	
	Poi Pet	427,221	546,081	15,026	8,659	569,766	16.3	33.4	
	Cham Yeam	36,996	41,582	4,411	1,673	47,666	1.4	28.8	
	Prom	64,157	122,814	421	423	123,658	3.5	92.7	
	Daung	113,270	211,049	102	109	211,260	6.0	86.5	
	O'Smach	24,123	24,117	233	185	24,535	0.7	1.7	
	Chorm	9,603	18,415	78	94	18,587	0.5	93.6	
	Sihanoukville (Int'l sea port)	11,118	20,441			20,441	0.6	83.9	
<b>2</b>	<b>Cambodia - Vietnam</b>	<b>640,769</b>	<b>700,350</b>	<b>24,761</b>	<b>17,001</b>	<b>742,112</b>	<b>21.2</b>	<b>15.8</b>	
	Bavet	406,458	480,136	22,619	9,111	511,866	14.6	25.9	
	Phnom Den	33,865	33,396	51	290	33,737	1.0	-0.4	
	Trapaing Plong	26,924	25,336	493	469	26,298	0.8	-2.3	
	Trapaing Sré	61,779	44,627	193	4,499	49,319	1.4	-20.2	
	Prek Chak	30,045	27,972	830	718	29,520	0.8	-1.7	
	Oya Dao	21,281	39,400	290	724	40,414	1.2	89.9	
	Banteay Chak Krey	13,444	14,462	228	1,111	15,801	0.5	17.5	
	Prey Vor	0	6,333	24	56	6,413	0.2		
	Kaam Samnor	40,962	20,423	33	23	20,479	0.6	-50.0	
	Phnom Penh Port	6,011	8,265			8,265	0.2	37.5	
<b>3</b>	<b>Cambodia - Lao</b>	<b>28,746</b>	<b>31,253</b>	<b>880</b>	<b>367</b>	<b>32,500</b>	<b>0.9</b>	<b>13.1</b>	
	Trapaing Kreal	28,746	31,253	880	367	32,500	0.9	13.1	

## International Outbound Tourism by Months in 2009 - 2012

Months	International Outbound				change (%) 2012*/11
	2009	2010	2011	2012	
January	199,905	215,702	279,303	356,884	27.8
February	183,808	212,222	253,363	311,097	22.8
March	188,323	213,645	250,261	318,776	27.4
April	150,744	183,147	215,957	275,739	27.7
May	146,758	174,019	191,274	245,791	28.5
June	125,746	155,291	188,863	246,741	30.6
July	150,580	185,426	230,580	246,741	7.0
August	169,034	206,427	257,499	297,916	15.7
September	130,337	159,720	215,988	237,456	9.9
October	143,354	188,208	220,797	278,170	26.0
November	173,102	230,741	254,434	315,143	23.9
December	190,136	230,275	288,990	374,130	29.5
<b>Total</b>	<b>1,951,827</b>	<b>2,354,823</b>	<b>2,847,309</b>	<b>3,504,584</b>	<b>23.1</b>

## International Outbound Tourism by Country of Residence in 2012

(by Purpose of Visit)

Regions Country of Residence	2011	2012			Total	Female	share (%) 2012*	change (%) 2012*/11
		Purpose of Visit						
		Holiday	Business	Other				
<b>GRAND TOTAL</b>	<b>2,847,309</b>	<b>3,236,352</b>	<b>160,745</b>	<b>107,487</b>	<b>3,504,584</b>	<b>1,598,216</b>	<b>100.0</b>	<b>23.1</b>
<b>Asia and the Pacific</b>	<b>2,083,914</b>	<b>2,460,640</b>	<b>128,382</b>	<b>40,610</b>	<b>2,629,632</b>	<b>1,224,448</b>	<b>75.0</b>	<b>26.2</b>
<b>ASEAN</b>	<b>1,078,907</b>	<b>1,412,999</b>	<b>35,898</b>	<b>10,846</b>	<b>1,459,743</b>	<b>691,544</b>	<b>41.7</b>	<b>35.3</b>
Brunei Darussalam	506	843	11	115	969	387	0.0	91.5
Indonesia	18,247	18,599	2,648	598	21,845	7,414	0.6	19.7
Lao PDR	128,295	240,917	756	687	242,360	160,586	6.9	88.9
Malaysia	102,827	114,710	7,996	992	123,698	39,580	3.5	20.3
Myanmar	4,180	3,975	655	245	4,875	1,899	0.1	16.6
Philippines	69,759	87,724	6,241	1,096	95,061	55,874	2.7	36.3
Singapore	47,266	51,114	2,332	379	53,825	19,180	1.5	13.9
Thailand	111,411	169,462	8,923	3,531	181,916	85,205	5.2	63.3
Vietnam	596,416	725,655	6,336	3,203	735,194	321,419	21.0	23.3
<b>Eastern Asia</b>	<b>858,137</b>	<b>914,736</b>	<b>81,955</b>	<b>10,761</b>	<b>1,007,452</b>	<b>467,026</b>	<b>28.7</b>	<b>17.4</b>
China (RPC)	245,429	279,510	47,772	2,858	330,140	149,924	9.4	34.5
Hong Kong SAR	4,709	7,750	204	33	7,987	3,938	0.2	69.6
Japan	156,139	165,751	7,736	2,830	176,317	77,187	5.0	12.9
Korea (ROK)	351,925	386,147	14,642	3,008	403,797	198,970	11.5	14.7
Mongolia	258	318	17	47	382	190	0.0	48.1
Taiwan, China	99,677	75,260	11,584	1,985	88,829	36,817	2.5	-10.9
<b>Southern Asia</b>	<b>19,216</b>	<b>19,185</b>	<b>3,348</b>	<b>1,019</b>	<b>23,552</b>	<b>6,317</b>	<b>0.7</b>	<b>22.6</b>
Afghanistan	53	56	9	20	85	9	0.0	60.4
Bangladesh	870	748	236	147	1,131	191	0.0	30.0
Bhutan	79	91	9	18	118	28	0.0	49.4
India	15,148	15,597	2,182	562	18,341	5,194	0.5	21.1
Nepal	1,042	1,103	222	112	1,437	379	0.0	37.9
Pakistan	1,040	723	372	72	1,167	250	0.0	12.2
Srilanka	984	867	318	88	1,273	266	0.0	29.4
<b>Western Asia</b>	<b>1,941</b>	<b>2,159</b>	<b>195</b>	<b>16</b>	<b>2,370</b>	<b>1,251</b>	<b>0.1</b>	<b>22.1</b>
Kazakhstan	1,221	1,651	169	13	1,833	885	0.1	50.1
Uzbekistan	720	508	26	3	537	366	0.0	-25.4
<b>Oceania</b>	<b>122,823</b>	<b>110,998</b>	<b>6,891</b>	<b>17,862</b>	<b>135,751</b>	<b>58,063</b>	<b>3.9</b>	<b>10.5</b>
Australia	106,710	96,592	5,803	14,806	117,201	50,782	3.3	9.8
Fiji	98	154	12	15	181	74	0.0	84.7
New Zealand	16,015	14,252	1,076	3,041	18,369	7,207	0.5	14.7
Other Asia & the Pacific	2,890	563	95	106	764	247	0.0	-73.6
<b>Europe</b>	<b>538,561</b>	<b>557,663</b>	<b>20,657</b>	<b>26,526</b>	<b>604,846</b>	<b>255,770</b>	<b>17.3</b>	<b>12.3</b>
<b>Northern Europe</b>	<b>148,262</b>	<b>150,029</b>	<b>6,732</b>	<b>2,692</b>	<b>159,453</b>	<b>60,767</b>	<b>4.5</b>	<b>7.5</b>
Denmark	8,832	8,589	271	181	9,041	3,563	0.3	2.4
Finland	5,600	8,310	340	141	8,791	3,667	0.3	57.0
Iceland	332	1,280	118	16	1,414	474	0.0	325.9
Ireland	8,160	8,847	352	130	9,329	3,748	0.3	14.3
Norway	8,030	7,641	222	188	8,051	3,100	0.2	0.3
Sweden	14,522	14,494	465	391	15,350	5,811	0.4	5.7
United Kingdom	102,786	100,868	4,964	1,645	107,477	40,404	3.1	4.6
<b>Western Europe</b>	<b>239,217</b>	<b>228,138</b>	<b>10,969</b>	<b>22,480</b>	<b>261,587</b>	<b>107,100</b>	<b>7.5</b>	<b>9.4</b>
Austria	7,457	7,578	227	404	8,209	3,210	0.2	10.1
Belgium	13,870	13,334	619	731	14,684	5,601	0.4	5.9
France	115,964	92,402	6,672	19,023	118,097	49,195	3.4	1.8
Germany	61,641	67,976	1,804	1,598	71,378	28,439	2.0	15.8
Luxembourg	635	554	9	12	575	229	0.0	-9.4
Monaco	75	28	1		29	11	0.0	-61.3
Netherlands	22,962	21,313	810	489	22,612	8,875	0.6	-1.5
Switzerland	16,613	24,953	827	223	26,003	11,540	0.7	56.5
<b>Eastern Europe</b>	<b>90,750</b>	<b>124,153</b>	<b>1,391</b>	<b>451</b>	<b>125,995</b>	<b>64,314</b>	<b>3.6</b>	<b>38.8</b>
Bulgaria	466	590	9	10	609	295	0.0	30.7
Czech Republic	3,235	4,134	48	34	4,216	1,860	0.1	30.3
Estonia	966	933	19	17	969	385	0.0	0.3
Hungary	2,496	2,435	55	27	2,517	988	0.1	0.8
Lithuania	1,162	1,056	16	5	1,077	533	0.0	-7.3
Poland	8,950	12,318	68	42	12,428	6,211	0.4	38.9
Romania	1,052	1,106	45	14	1,165	597	0.0	10.7
Russian Federation	67,313	94,297	928	251	95,476	49,964	2.7	41.8
Slovakia	1,249	2,647	93	37	2,777	1,184	0.1	122.3
Ukraine	3,861	4,637	110	14	4,761	2,297	0.1	23.3

## International Outbound Tourism by Country of Residence in 2012

(by Purpose of Visit)

Regions Country of Residence	2011	2012					share (%) 2012*	change (%) 2012*/11
		Purpose of Visit			Total	Female		
		Holiday	Business	Other				
<b>GRAND TOTAL</b>	<b>2,847,309</b>	<b>3,236,352</b>	<b>160,745</b>	<b>107,487</b>	<b>3,504,584</b>	<b>1,598,216</b>	<b>100.0</b>	<b>23.1</b>
<b>Southern Europe</b>	<b>57,918</b>	<b>54,765</b>	<b>1,460</b>	<b>779</b>	<b>57,004</b>	<b>23,220</b>	<b>1.6</b>	<b>-1.6</b>
Croatia	544	600	14	8	622	290	0.0	14.3
Greece	1,249	1,020	35	15	1,070	383	0.0	-14.3
Italy	26,513	22,018	676	361	23,055	8,296	0.7	-13.0
Portugal	3,127	2,861	58	24	2,943	1,379	0.1	-5.9
Serbia	394	399	19	10	428	191	0.0	8.6
Slovenia	824	936	45	15	996	418	0.0	20.9
Spain	22,098	23,586	377	267	24,230	11,058	0.7	9.6
Turkey	3,169	3,345	236	79	3,660	1,205	0.1	15.5
Other Europe	2,414	578	105	124	807	369	0.0	-66.6
<b>Americas</b>	<b>208,872</b>	<b>190,977</b>	<b>10,766</b>	<b>39,736</b>	<b>241,479</b>	<b>103,388</b>	<b>6.9</b>	<b>15.6</b>
Argentina	3,076	4,203	45	49	4,297	2,071	0.1	39.7
Brazil	3,656	4,773	56	49	4,878	2,312	0.1	33.4
Canada	42,230	39,133	1,948	5,600	46,681	20,285	1.3	10.5
Chile	3,058	4,290	169	52	4,511	2,130	0.1	47.5
Colombia	1,152	1,333	37	27	1,397	679	0.0	21.3
Costa Rica	293	220	8	5	233	111	0.0	-20.5
Ecuador	159	136	20	6	162	69	0.0	1.9
Mexico	3,668	3,909	69	25	4,003	1,975	0.1	9.1
Peru	495	509	21	6	536	239	0.0	8.3
United States	148,960	128,495	8,308	33,782	170,585	71,417	4.9	14.5
Uruguay	450	3,630	6	9	3,645	1,852	0.1	710.0
Other Americas	1,675	346	79	126	551	248	0.0	-67.1
<b>Africa</b>	<b>7,051</b>	<b>4,745</b>	<b>508</b>	<b>272</b>	<b>5,525</b>	<b>2,217</b>	<b>0.2</b>	<b>-21.6</b>
Cameroon	381	609	22	36	667	276	0.0	75.1
Congo	149	50	1	2	53	13	0.0	-64.4
Ghana	389	111	4	12	127	14	0.0	-67.4
Kenya	293	213	24	47	284	93	0.0	-3.1
Liberia	335	62	1	1	64	19	0.0	-80.9
Nigeria	1,523	296	214	16	526	70	0.0	-65.5
Sudan	74	24	3	7	34	22	0.0	-54.1
South Africa	3,334	3,129	191	66	3,386	1,544	0.1	1.6
Uganda	284	57	3	17	77	39	0.0	-72.9
Other Africa	289	194	45	68	307	127	0.0	6.2
<b>Middle East</b>	<b>8,911</b>	<b>22,327</b>	<b>432</b>	<b>343</b>	<b>23,102</b>	<b>12,393</b>	<b>0.7</b>	<b>159.3</b>
Egypt	181	151	15	15	181	47	0.0	0.0
Iran	760	951	29	18	998	333	0.0	31.3
Iraq	76	192	9	5	206	50	0.0	171.1
Israel	6,656	7,238	263	51	7,552	2,931	0.2	13.5
Kuwait	505	11,425	7	9	11,441	8,180	0.3	2165.5
Oman	110	131	5	3	139	19	0.0	26.4
Palestine	40	39	3		42	10	0.0	5.0
Qatar	65	80		1	81	38	0.0	24.6
Saudi Arabia	86	349	9	6	364	55	0.0	323.3
United Arab Emirates	155	1,478	51	164	1,693	601	0.0	992.3
Yemen	86	168	7	8	183	43	0.0	112.8
Other Middle East	191	125	34	63	222	86	0.0	16.2

## Major data in 1993 - 2012

Years	Visitor Arrivals		Average Length of Stay	Hotel Occupancy Rate	Tourism Receipts
	number	change (%)	(Days)	(%)	Million (US\$)
1993	118,183	-	N/A	N/A	N/A
1994	176,617	49.4	N/A	N/A	N/A
1995	219,680	24.4	8.00	37.00	100
1996	260,489	18.6	7.50	40.00	118
1997	218,843	-16.0	6.40	30.00	103
1998	289,524	32.3	5.20	40.00	166
1999	367,743	27.0	5.50	44.00	190
2000	466,365	26.8	5.50	45.00	228
2001	604,919	29.7	5.50	48.00	304
2002	786,524	30.0	5.80	50.00	379
2003	701,014	-10.9	5.50	50.00	347
2004	1,055,202	50.5	6.30	52.00	578
2005	1,421,615	34.7	6.30	52.00	832
2006	1,700,041	19.6	6.50	54.79	1,049
2007	2,015,128	18.5	6.50	54.79	1,403
2008	2,125,465	5.5	6.65	62.68	1,595
2009	2,161,577	1.7	6.45	63.57	1,561
2010	2,508,289	16.0	6.45	65.74	1,786
2011	2,881,862	14.9	6.50	66.15	1,912
2012	3,584,307	24.4	6.30	68.49	2,210

## Average length of stay

Kind of tourist	Phnom Penh	Siem Reap	Expenditure
	(Days)	(Days)	(US\$ / Day)
GIT	4.13	3.37	
FIT	5.96	5.93	
Total	4.21	3.32	117.64

GIT: Group Inclusive Travelers

FIT: Free Independent Travelers

## Average expenditure of individual

Items	Expenditure (US\$)
Accommodation	147.62
Food & beverage	81.05
Shopping	93.54
Local transport	82.64
Others	78.31
Average	483.16

## Average expenditure of group tours

Items	Expenditure (US\$)
Package Tours	955.71
Shopping	179.68
Others	100.99
Total	1,236.38



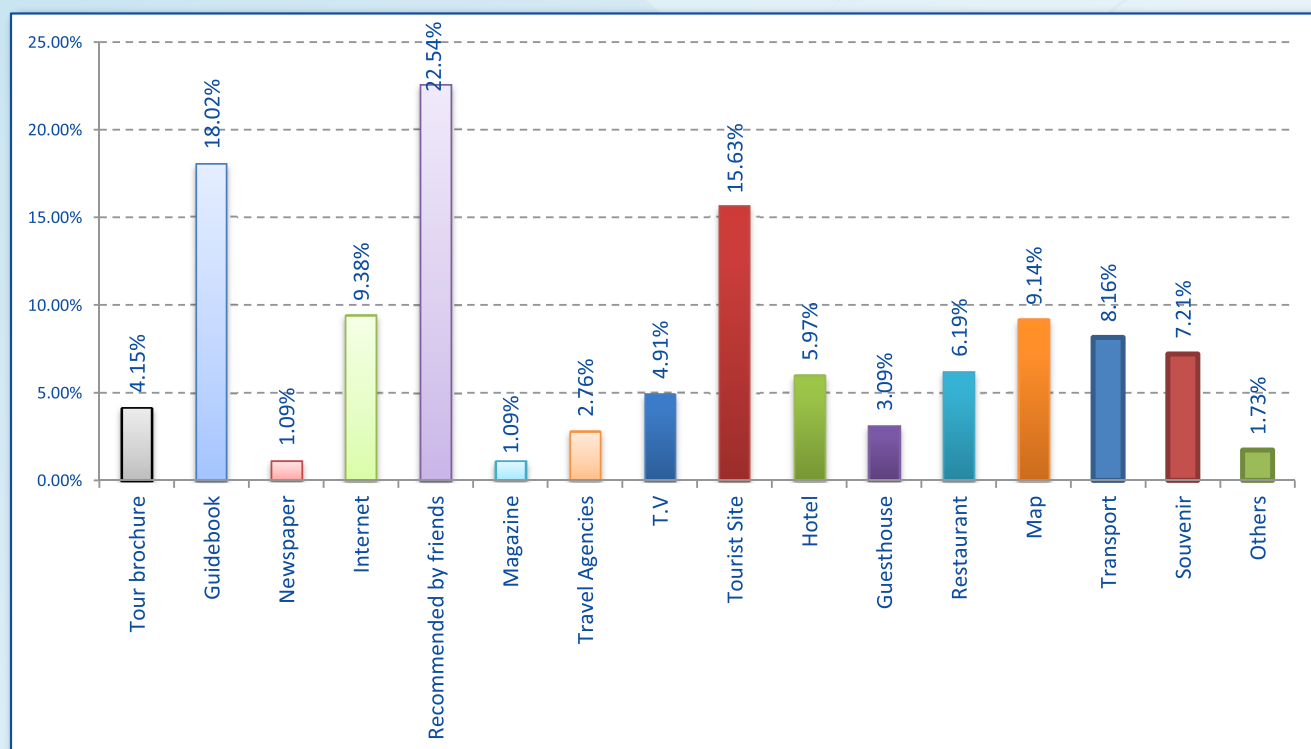
Profile of international Tourist Arrivals to Cambodia in 2009 - 2012 (Inbound Tourism Survey 2012)

Tourist Characteristic	2009		2010		2011		2012	
	PNH (%)	REP (%)	PNH (%)	REP (%)	PNH (%)	REP (%)	PNH (%)	REP (%)
<b>Frequency of Visit</b>	<b>100.00</b>	<b>100.00</b>	<b>100.00</b>	<b>100.00</b>	<b>100.00</b>	<b>100.00</b>	<b>100.00</b>	<b>100.00</b>
Firt Visit	64.80	68.13	80.54	93.11	82.47	78.65	84.57	81.63
Revisit	35.20	31.87	19.46	6.89	17.53	21.35	15.43	18.37
<b>Travel Arrangment</b>	<b>100.00</b>	<b>100.00</b>	<b>100.00</b>	<b>100.00</b>	<b>100.00</b>	<b>100.00</b>	<b>100.00</b>	<b>100.00</b>
GIT	53.67	53.00	31.14	47.78	35.19	62.32	45.29	63.51
FIT	46.33	47.00	68.86	52.22	64.81	37.68	54.71	36.49
<b>Sex</b>	<b>100.00</b>	<b>100.00</b>	<b>100.00</b>	<b>100.00</b>	<b>100.00</b>	<b>100.00</b>	<b>100.00</b>	<b>100.00</b>
Male	56.67	55.80	62.28	57.11	65.12	45.22	62.53	47.38
Female	43.33	44.20	37.72	42.89	34.88	54.78	37.47	52.62
<b>Purpose of Visit</b>	<b>100.00</b>	<b>100.00</b>	<b>100.00</b>	<b>100.00</b>	<b>100.00</b>	<b>100.00</b>	<b>100.00</b>	<b>100.00</b>
Holiday, Leisure	83.20	87.60	65.27	86.00	73.14	88.11	71.16	87.43
Business	7.20	7.67	8.08	4.00	9.27	4.56	10.31	4.32
Official	1.67	1.06	3.59	2.22	4.32	2.34	4.52	2.28
Friend/Parents (VFR)	1.93	0.87	15.87	5.56	9.72	3.64	10.70	5.09
Others	6.00	2.80	7.19	2.22	3.55	1.35	3.31	0.88
<b>Age</b>	<b>100.00</b>	<b>100.00</b>	<b>100.00</b>	<b>100.00</b>	<b>100.00</b>	<b>100.00</b>	<b>100.00</b>	<b>100.00</b>
Under - 19	12.23	13.18	11.08	12.56	13.97	12.29	12.74	11.94
20 - 29	20.45	21.81	21.45	23.81	28.42	27.35	22.56	24.14
30 - 39	20.35	20.98	11.08	13.45	23.73	27.97	13.08	27.84
40 - 49	18.21	19.74	28.50	29.73	21.61	26.52	31.57	28.36
50 - 59	18.56	17.23	19.34	17.46	9.11	3.34	17.26	4.87
60 - Over	10.20	7.06	8.55	2.99	3.16	2.53	2.79	2.85
<b>Occupation</b>	<b>100.00</b>	<b>100.00</b>	<b>100.00</b>	<b>100.00</b>	<b>100.00</b>	<b>100.00</b>	<b>100.00</b>	<b>100.00</b>
Employee	21.59	19.24	30.53	28.44	30.21	29.16	31.25	30.19
Business	24.25	18.31	12.57	12.44	23.36	13.98	19.42	14.25
Teacher	16.19	17.24	6.89	9.11	17.14	9.29	9.08	8.19
Retired	7.84	13.45	7.49	10.67	7.91	12.63	6.97	11.67
Official	6.82	9.14	2.10	2.44	6.52	5.34	5.16	4.38
Student	16.58	15.24	22.75	18.44	11.67	18.16	18.10	19.16
Others	6.73	7.38	17.67	18.46	3.19	11.44	10.02	12.16

Note:

PNH: Phnom Penh Area

REP: Siem Reap Area





**SECTION I**

**PHNOM PENH INTERNATIONAL  
AIRPORT**

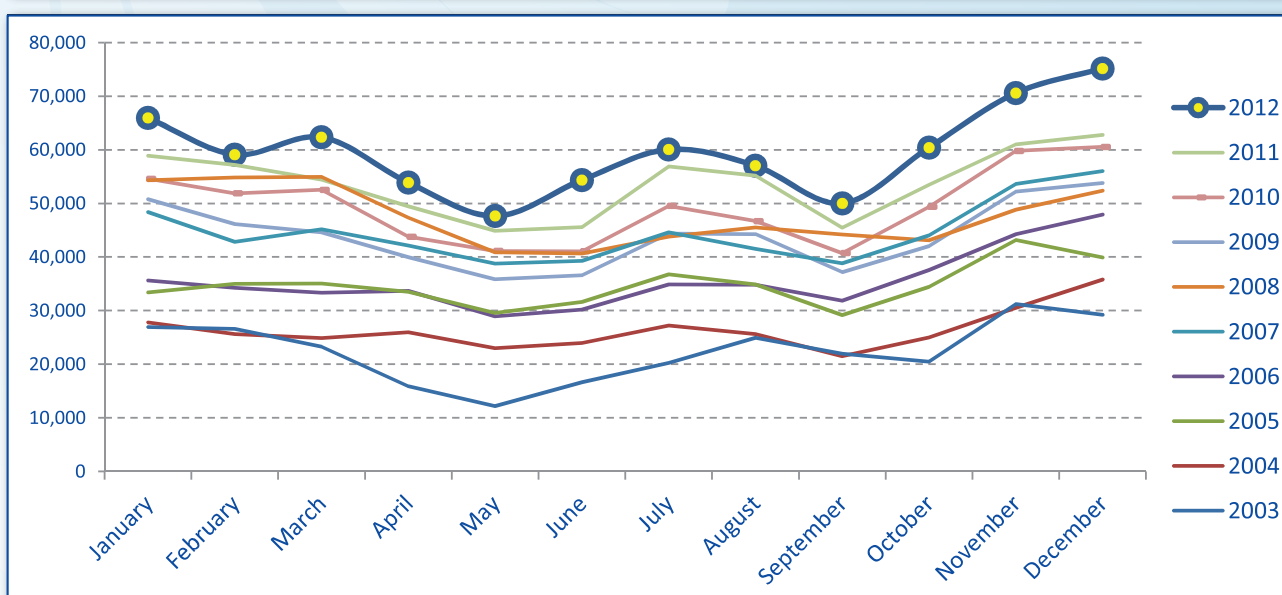


[www.cambodiaphotoplayer.com](http://www.cambodiaphotoplayer.com)

Night Life, Phnom Penh City

Int'l Tourist Arrivals to Phnom Penh International Airport by Months in 2003 - 2012

Months	2003	2004	2005	2006	2007	2008	2009	2010	2011	2012	change(%) 2012*/11
<b>Q1</b>	<b>76,818</b>	<b>78,245</b>	<b>103,482</b>	<b>103,203</b>	<b>136,350</b>	<b>164,166</b>	<b>141,496</b>	<b>158,979</b>	<b>170,558</b>	<b>187,408</b>	<b>9.9</b>
January	26,926	27,767	33,409	35,601	48,383	54,336	50,749	54,584	58,905	65,956	12.0
February	26,594	25,602	35,012	34,274	42,808	54,854	46,128	51,867	57,202	59,122	3.4
March	23,298	24,876	35,061	33,328	45,159	54,976	44,619	52,528	54,451	62,330	14.5
<b>Q2</b>	<b>44,745</b>	<b>72,908</b>	<b>94,648</b>	<b>92,824</b>	<b>120,202</b>	<b>128,926</b>	<b>112,410</b>	<b>126,012</b>	<b>139,906</b>	<b>155,878</b>	<b>11.4</b>
April	15,904	25,955	33,482	33,655	42,153	47,358	39,983	43,797	49,478	53,883	8.9
May	12,199	22,986	29,543	28,959	38,780	40,907	35,850	41,131	44,874	47,636	6.2
June	16,642	23,967	31,623	30,210	39,269	40,661	36,577	41,084	45,554	54,359	19.3
<b>Q3</b>	<b>67,159</b>	<b>74,310</b>	<b>100,750</b>	<b>101,575</b>	<b>124,967</b>	<b>133,508</b>	<b>125,812</b>	<b>136,939</b>	<b>157,531</b>	<b>167,096</b>	<b>6.1</b>
July	20,261	27,202	36,742	34,908	44,623	43,793	44,356	49,519	56,875	60,057	5.6
August	24,934	25,620	34,861	34,841	41,534	45,492	44,264	46,697	55,182	57,016	3.3
September	21,964	21,488	29,147	31,826	38,810	44,223	37,192	40,723	45,474	50,023	10.0
<b>Q4</b>	<b>80,952</b>	<b>91,285</b>	<b>117,516</b>	<b>129,787</b>	<b>153,743</b>	<b>144,303</b>	<b>148,027</b>	<b>169,698</b>	<b>177,240</b>	<b>206,202</b>	<b>16.3</b>
October	20,502	24,968	34,416	37,576	44,052	43,122	42,024	49,353	53,459	60,437	13.1
November	31,201	30,537	43,164	44,279	53,638	48,824	52,181	59,803	61,005	70,588	15.7
December	29,249	35,780	39,936	47,932	56,053	52,357	53,822	60,542	62,776	75,177	19.8
<b>Total</b>	<b>269,674</b>	<b>316,748</b>	<b>416,396</b>	<b>427,389</b>	<b>535,262</b>	<b>570,903</b>	<b>527,745</b>	<b>591,628</b>	<b>645,235</b>	<b>716,584</b>	<b>11.1</b>

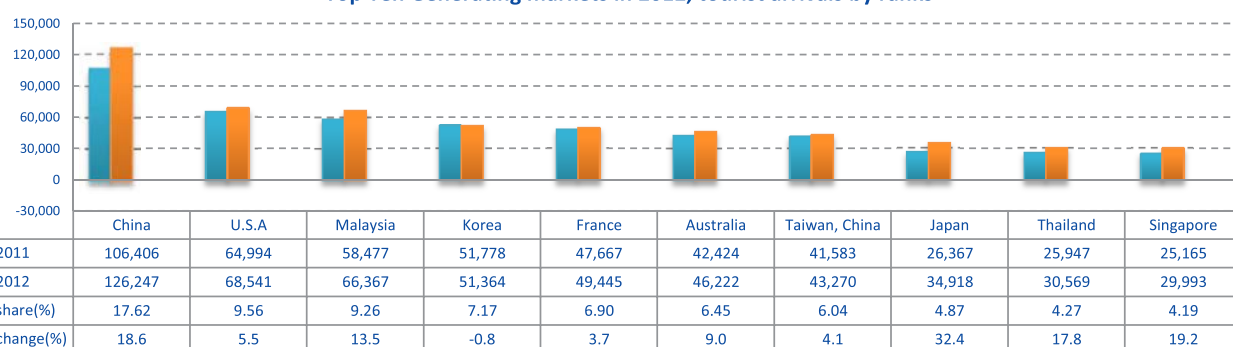




**International Tourist Arrivals to Phnom Penh International Airport by Country of Residence in 2012**  
(by Air only)

Regions Country of Residence	2012												Total	share (%) 2012*
	Jan	Feb	Mar	Apr	May	Jun	Jul	Aug	Sep	Oct	Nov	Dec		
<b>GRAND TOTAL</b>	<b>65,956</b>	<b>59,122</b>	<b>62,330</b>	<b>53,883</b>	<b>47,636</b>	<b>54,359</b>	<b>60,057</b>	<b>57,016</b>	<b>50,023</b>	<b>60,437</b>	<b>70,588</b>	<b>75,177</b>	<b>716,584</b>	<b>100.0</b>
<b>Southern Europe</b>	<b>1,258</b>	<b>1,206</b>	<b>856</b>	<b>754</b>	<b>449</b>	<b>526</b>	<b>909</b>	<b>1,697</b>	<b>631</b>	<b>954</b>	<b>1,168</b>	<b>833</b>	<b>11,241</b>	<b>1.6</b>
Croatia	21	5	6	4	5	7	9	52	2	8	11	7	137	0.0
Greece	19	19	15	39	15	12	17	51	14	21	24	66	312	0.0
Italy	749	667	496	293	212	248	366	790	274	386	588	339	5,408	0.8
Portugal	42	32	45	68	21	17	32	58	36	43	89	90	573	0.1
Serbia	18	5	4	10	6	8	7	9	8	16	9	6	106	0.0
Slovenia	19	48	7	10	3	10	4	9	4	4	18	12	148	0.0
Spain	290	301	213	254	142	184	439	604	254	347	348	233	3,609	0.5
Turkey	100	129	70	76	45	40	35	124	39	129	81	80	948	0.1
Other Europe	46	42	45	45	12	25	52	75	57	203	24	254	880	0.1
<b>Americas</b>	<b>8,815</b>	<b>7,205</b>	<b>8,329</b>	<b>7,192</b>	<b>6,053</b>	<b>6,997</b>	<b>6,999</b>	<b>5,525</b>	<b>5,237</b>	<b>6,780</b>	<b>9,144</b>	<b>8,204</b>	<b>86,480</b>	<b>12.1</b>
Argentina	29	32	43	152	32	21	21	15	19	16	25	24	429	0.1
Brazil	126	58	80	56	35	34	25	24	42	35	60	97	672	0.1
Canada	1,783	1,545	1,477	1,081	1,096	923	1,102	803	820	1,123	1,788	1,574	15,115	2.1
Chile	14	35	15	9	13	27	8	21	16	98	17	25	298	0.0
Colombia	19	15	25	17	17	17	16	14	13	21	16	40	230	0.0
Costa Rica	2	3	4	6	1	5	6	3	3	3	2	1	39	0.0
Ecuador	5	4	2	4	2	1	6	4	10	9	8	5	60	0.0
Mexico	50	27	58	52	30	33	55	39	21	31	39	57	492	0.1
Peru	8	7	4	15	7	8	12	6	4	12	6	15	104	0.0
United States	6,739	5,442	6,584	5,773	4,804	5,911	5,700	4,572	4,245	5,352	7,153	6,266	68,541	9.6
Uruguay	2	2	1	2	5	5	3	1	2	1	5	4	33	0.0
Other Americas	38	35	36	25	11	12	45	23	42	79	25	96	467	0.1
<b>Africa</b>	<b>190</b>	<b>162</b>	<b>156</b>	<b>130</b>	<b>113</b>	<b>117</b>	<b>140</b>	<b>149</b>	<b>143</b>	<b>158</b>	<b>171</b>	<b>211</b>	<b>1,840</b>	<b>0.3</b>
Cameroon	9	1	2	4	2	1	9	9	8	5	2	9	61	0.0
Congo	2	10	1	0	1	0	1	1	1	2	1	1	21	0.0
Ghana	3	3	7	3	4	5	2	3	3	2	3	2	40	0.0
Kenya	26	14	8	10	7	13	6	21	14	10	14	13	156	0.0
Liberia	2	1	1	2	1	4	1	4	1	1	4	1	23	0.0
Nigeria	31	52	36	26	28	18	35	34	30	31	40	26	387	0.1
Sudan	1	2	1	2	1	0	2	1	3	1	2	4	20	0.0
South Africa	104	65	79	73	59	70	68	67	69	92	93	142	981	0.1
Uganda	2	3	3	2	3	1	4	4	3	2	7	1	35	0.0
Other Africa	10	11	18	8	7	5	12	5	11	12	5	12	116	0.0
<b>Middle East</b>	<b>170</b>	<b>155</b>	<b>166</b>	<b>110</b>	<b>92</b>	<b>152</b>	<b>216</b>	<b>134</b>	<b>222</b>	<b>203</b>	<b>173</b>	<b>159</b>	<b>1,952</b>	<b>0.3</b>
Egypt	7	19	6	5	4	6	6	3	21	10	9	5	101	0.0
Iran	15	7	14	9	9	19	13	14	19	5	15	20	159	0.0
Iraq	2	7	4	1	4	10	2	2	5	2	2	1	42	0.0
Israel	110	102	89	76	53	88	143	76	143	162	126	108	1,276	0.2
Kuwait	7	5	5	3	5	8	3	4	5	4	6	3	58	0.0
Oman	2	1	3	2	1	5		5	2	1	1	1	24	0.0
Palestine	0	0	2	1	1	1	1	3	5	3	1	3	21	0.0
Qatar	1	1	12	1	3	1	1	1	1	1	1	2	25	0.0
Saudi Arabia	6	4	2	2	3	2	2	4	3	1	2	2	33	0.0
United Arab Emirates	3	2	3	1	2	2	1	2	1	2	1	2	22	0.0
Yemen	8	1	12	3	2	3	35	6	8	4	6	3	91	0.0
Other Middle East	9	6	14	6	5	7	9	14	10	8	3	9	100	0.0

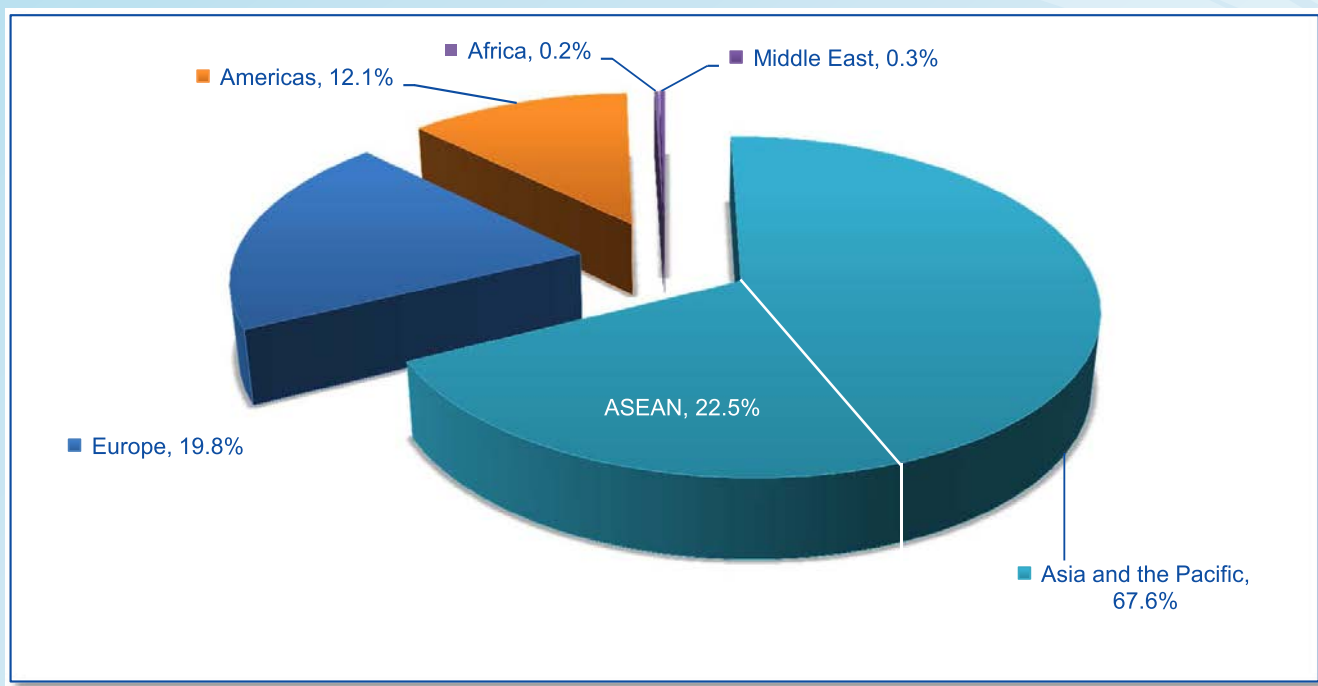
**Top Ten Generating markets in 2012, tourist arrivals by ranks**



**Int'l Tourist Arrivals to Phnom Penh International Airport by Regions in 2012**

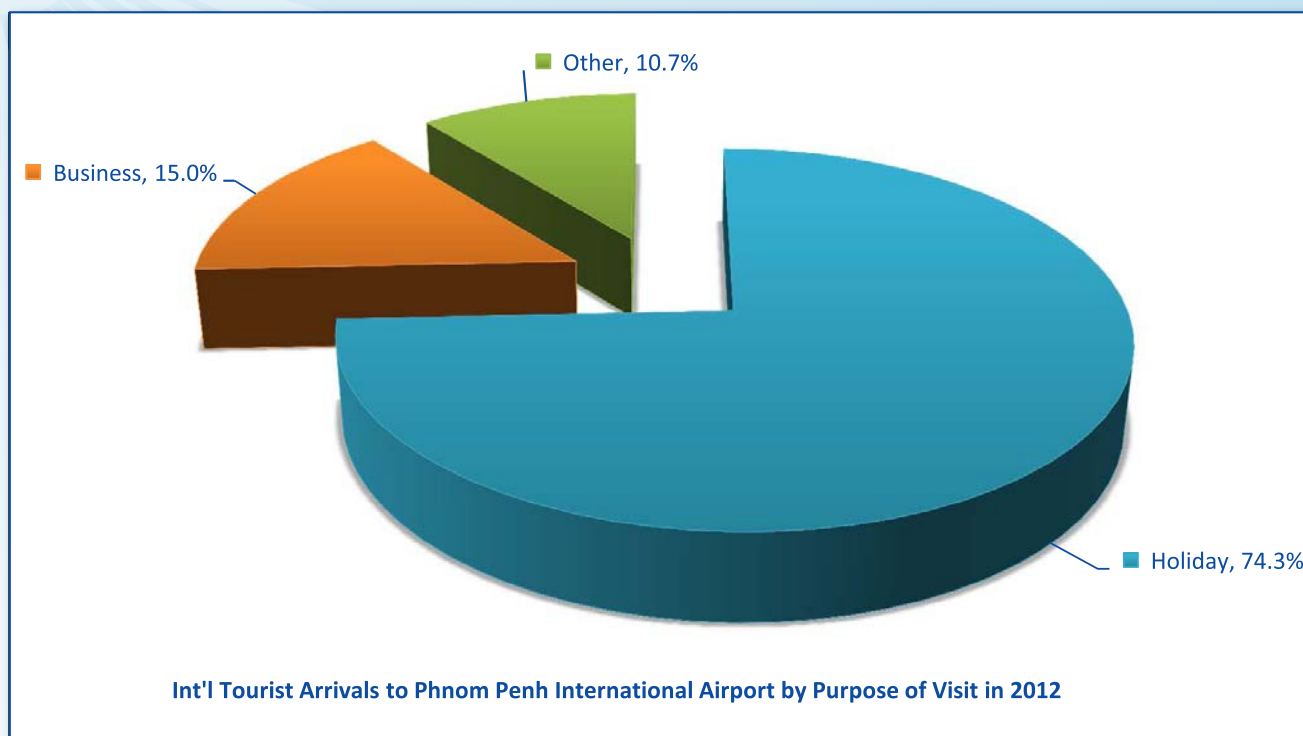
Months	Asia and the Pacific	ASEAN	Europe	Americas	Africa	Middle East	Total
<b>Q1</b>	<b>119,937</b>	<b>36,419</b>	<b>42,123</b>	<b>24,349</b>	<b>508</b>	<b>491</b>	<b>187,408</b>
January	40,583	11,155	16,198	8,815	190	170	65,956
February	37,723	11,065	13,877	7,205	162	155	59,122
March	41,631	14,199	12,048	8,329	156	166	62,330
<b>Q2</b>	<b>108,779</b>	<b>37,895</b>	<b>26,143</b>	<b>20,242</b>	<b>360</b>	<b>354</b>	<b>155,878</b>
April	36,173	11,616	10,278	7,192	130	110	53,883
May	34,115	12,479	7,263	6,053	113	92	47,636
June	38,491	13,800	8,602	6,997	117	152	54,359
<b>Q3</b>	<b>117,336</b>	<b>37,945</b>	<b>30,995</b>	<b>17,761</b>	<b>380</b>	<b>572</b>	<b>167,096</b>
July	40,528	12,717	12,174	6,999	140	216	60,057
August	40,004	12,967	11,204	5,525	149	134	57,016
September	36,804	12,261	7,617	5,237	143	222	50,023
<b>Q4</b>	<b>138,177</b>	<b>48,631</b>	<b>42,822</b>	<b>24,128</b>	<b>540</b>	<b>535</b>	<b>206,202</b>
October	42,480	14,599	10,816	6,780	158	203	60,437
November	44,979	16,357	16,121	9,144	171	173	70,588
December	50,718	17,675	15,885	8,204	211	159	75,177
<b>Total</b>	<b>484,229</b>	<b>160,890</b>	<b>142,083</b>	<b>86,480</b>	<b>1,788</b>	<b>1,952</b>	<b>716,584</b>
share (%)	67.6%	22.5%	19.8%	12.1%	0.2%	0.3%	100.0%

Note: ASEAN 10 countries was include in the Asia and the Pacific.



International Tourist Arrivals to Phnom Penh International Airport by Purpose of Visit in 2004 - 2012

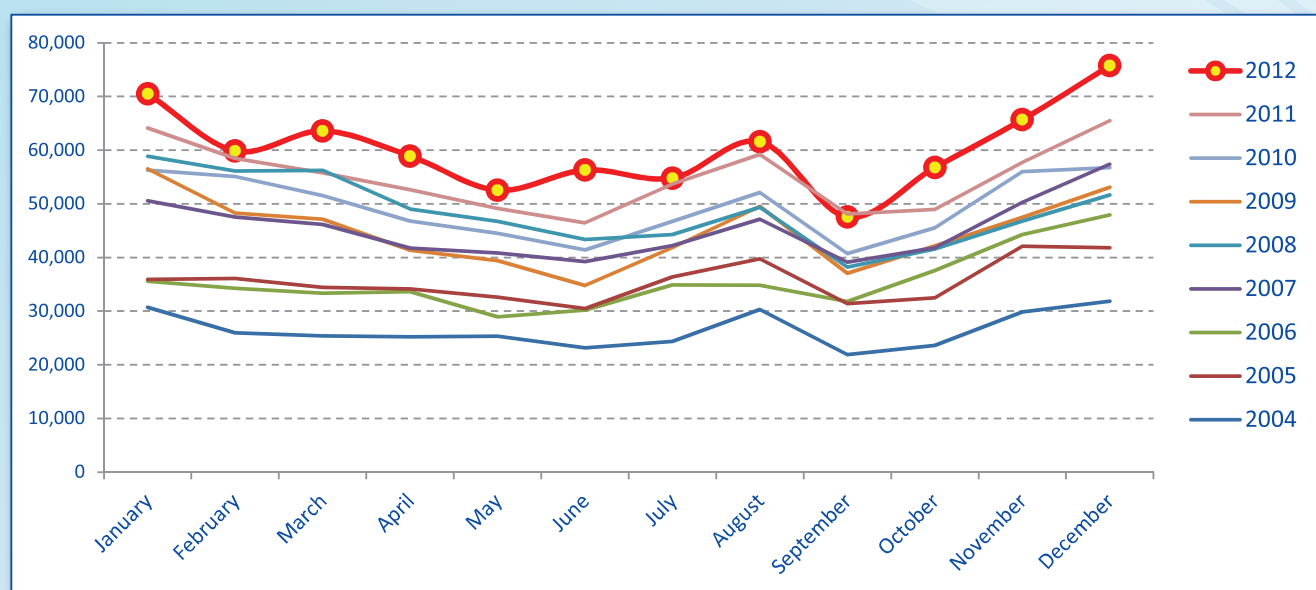
Purpose of Visit	Int'l tourist arrivals									change (%) 2012*/11
	2004	2005	2006	2007	2008	2009	2010	2011	2012	
<b>Total</b>	<b>316,748</b>	<b>416,396</b>	<b>427,389</b>	<b>535,262</b>	<b>570,903</b>	<b>527,745</b>	<b>591,628</b>	<b>645,233</b>	<b>716,584</b>	<b>11.1</b>
Holiday	251,302	322,035	328,137	423,668	459,340	422,896	477,466	533,776	532,426	-0.3
Business	46,563	61,919	74,940	86,751	90,282	81,881	90,302	91,223	107,422	17.8
Other	18,883	32,442	24,312	24,843	21,281	22,968	23,860	20,234	76,736	279.2
<b>Q1</b>	<b>78,245</b>	<b>103,482</b>	<b>103,203</b>	<b>136,350</b>	<b>164,166</b>	<b>141,496</b>	<b>158,979</b>	<b>170,558</b>	<b>187,408</b>	<b>9.9</b>
Holiday	63,119	82,907	78,486	110,226	133,802	115,850	129,485	142,249	147,940	4.0
Business	11,082	13,629	18,323	20,045	24,736	20,343	23,563	23,277	25,432	9.3
Other	4,044	6,946	6,394	6,079	5,628	5,303	5,931	5,032	14,036	178.9
<b>Q2</b>	<b>72,908</b>	<b>94,648</b>	<b>92,824</b>	<b>120,202</b>	<b>128,926</b>	<b>112,410</b>	<b>126,012</b>	<b>139,906</b>	<b>155,878</b>	<b>11.4</b>
Holiday	57,436	72,916	68,236	92,732	99,893	86,273	97,701	112,361	111,187	-1.0
Business	11,070	14,246	18,632	21,205	23,840	20,356	22,184	22,680	25,356	11.8
Other	4,402	7,486	5,956	6,265	5,193	5,781	6,127	4,865	19,335	297.4
<b>Q3</b>	<b>74,310</b>	<b>100,750</b>	<b>101,575</b>	<b>124,967</b>	<b>133,508</b>	<b>125,812</b>	<b>136,939</b>	<b>157,529</b>	<b>167,096</b>	<b>6.1</b>
Holiday	58,650	75,690	77,098	96,906	107,264	98,668	109,381	128,916	120,170	-6.8
Business	11,469	16,106	18,542	21,833	20,909	21,084	21,635	23,380	27,198	16.3
Other	4,191	8,954	5,935	6,228	5,335	6,060	5,923	5,233	19,728	277.0
<b>Q4</b>	<b>91,285</b>	<b>117,516</b>	<b>129,787</b>	<b>153,743</b>	<b>144,303</b>	<b>148,027</b>	<b>169,698</b>	<b>177,240</b>	<b>206,202</b>	<b>16.3</b>
Holiday	72,097	90,522	104,317	123,804	118,381	122,105	140,899	150,250	153,129	1.9
Business	12,942	17,938	19,443	23,668	20,797	20,098	22,920	21,886	29,436	34.5
Other	6,246	9,056	6,027	6,271	5,125	5,824	5,879	5,104	23,637	363.1





Int'l Tourist Departures from Phnom Penh International Airport by Months in 2004 - 2012

Months	Int'l Tourists Departure									change (%) 2012*/11
	2004	2005	2006	2007	2008	2009	2010	2011	2012	
<b>Q1</b>	<b>82,085</b>	<b>106,462</b>	<b>103,203</b>	<b>144,282</b>	<b>171,257</b>	<b>151,938</b>	<b>162,931</b>	<b>178,353</b>	<b>193,993</b>	<b>8.8</b>
January	30,731	35,914	35,601	50,577	58,882	56,536	56,288	64,141	70,533	10.0
February	25,940	36,100	34,274	47,524	56,140	48,257	55,117	58,444	59,870	2.4
March	25,414	34,448	33,328	46,181	56,235	47,145	51,526	55,768	63,590	14.0
<b>Q2</b>	<b>73,660</b>	<b>97,210</b>	<b>92,824</b>	<b>121,838</b>	<b>139,102</b>	<b>115,543</b>	<b>132,678</b>	<b>148,240</b>	<b>167,732</b>	<b>13.1</b>
April	25,201	34,146	33,655	41,775	49,002	41,362	46,771	52,650	58,895	11.9
May	25,313	32,590	28,959	40,819	46,736	39,416	44,500	49,130	52,543	6.9
June	23,146	30,474	30,210	39,244	43,364	34,765	41,407	46,460	56,294	21.2
<b>Q3</b>	<b>76,598</b>	<b>107,571</b>	<b>101,575</b>	<b>128,504</b>	<b>131,832</b>	<b>128,455</b>	<b>139,581</b>	<b>161,037</b>	<b>163,927</b>	<b>1.8</b>
July	24,381	36,395	34,908	42,213	44,297	41,831	46,736	53,686	54,794	2.1
August	30,316	39,776	34,841	47,143	49,354	49,540	52,122	59,221	61,592	4.0
September	21,901	31,400	31,826	39,148	38,181	37,084	40,723	48,130	47,541	-1.2
<b>Q4</b>	<b>85,357</b>	<b>116,385</b>	<b>129,787</b>	<b>149,451</b>	<b>140,045</b>	<b>142,702</b>	<b>158,314</b>	<b>172,192</b>	<b>198,206</b>	<b>15.1</b>
October	23,614	32,467	37,576	41,821	41,588	42,152	45,539	48,973	56,773	15.9
November	29,876	42,101	44,279	50,276	46,814	47,484	56,030	57,721	65,685	13.8
December	31,867	41,817	47,932	57,354	51,643	53,066	56,745	65,498	75,748	15.6
<b>Total</b>	<b>317,700</b>	<b>427,628</b>	<b>427,389</b>	<b>544,075</b>	<b>582,236</b>	<b>538,638</b>	<b>593,504</b>	<b>659,822</b>	<b>723,858</b>	<b>9.7</b>





## **SECTION II**

# **SIEM REAP INTERNATIONAL AIRPORT**



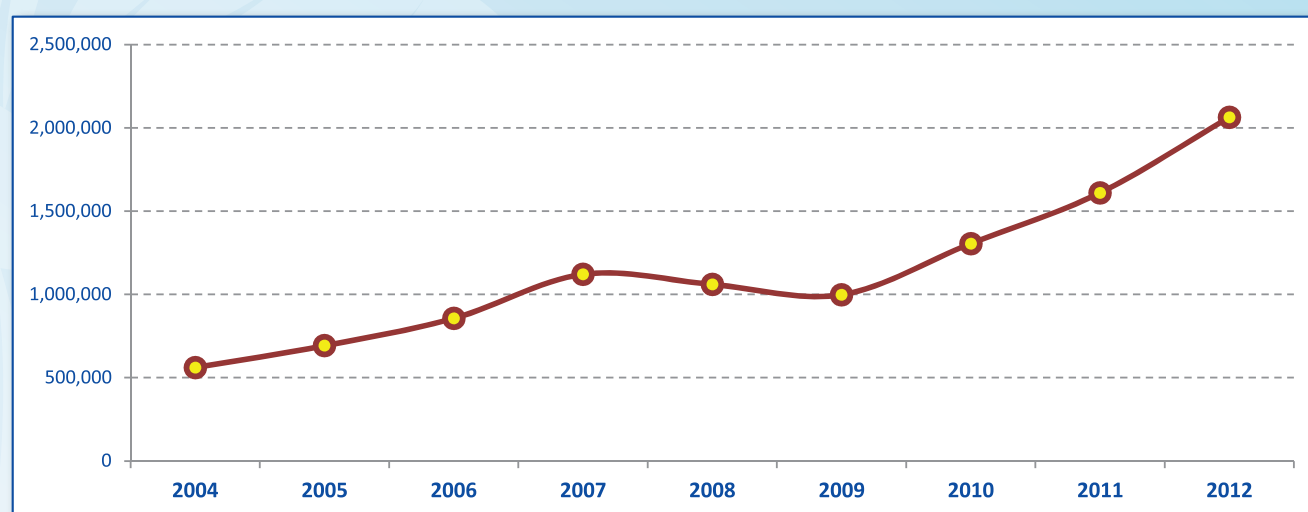
[www.cambodiaphotoplayer.com](http://www.cambodiaphotoplayer.com)

The Sacred Site of Preah Vihear Temple  
World Heritage

### International Tourist Arrivals to Siem Reap Angkor by Months in 2004 - 2012

(by all mean of transportations)

Months	2004	2005	2006	2007	2008	2009	2010	2011	2012	Change(%) 2012*/11
<b>Q1</b>	<b>157,388</b>	<b>216,151</b>	<b>241,785</b>	<b>399,812</b>	<b>356,390</b>	<b>298,164</b>	<b>366,102</b>	<b>435,972</b>	<b>639,874</b>	<b>46.8</b>
January	64,174	73,702	86,279	185,163	121,975	105,701	122,163	166,354	224,145	34.7
February	51,416	77,466	81,787	111,459	120,657	94,241	126,057	146,593	217,132	48.1
March	41,798	64,983	73,719	103,190	113,758	98,222	117,882	123,025	198,597	61.4
<b>Q2</b>	<b>85,759</b>	<b>129,154</b>	<b>153,575</b>	<b>215,634</b>	<b>222,404</b>	<b>204,864</b>	<b>274,842</b>	<b>348,537</b>	<b>418,783</b>	<b>20.2</b>
April	31,062	52,651	64,765	85,769	91,105	86,465	109,799	129,953	179,778	38.3
May	27,590	39,860	45,516	68,292	72,447	62,175	89,902	115,153	121,799	5.8
June	27,107	36,643	43,294	61,573	58,852	56,224	75,141	103,431	117,206	13.3
<b>Q3</b>	<b>127,233</b>	<b>154,099</b>	<b>186,740</b>	<b>188,342</b>	<b>209,005</b>	<b>218,202</b>	<b>287,229</b>	<b>382,595</b>	<b>428,556</b>	<b>12.0</b>
July	35,979	48,913	56,421	62,976	65,896	71,282	95,427	122,954	143,464	16.7
August	48,130	63,853	74,365	69,196	78,254	80,220	106,502	140,769	163,502	16.1
September	43,124	41,333	55,954	56,170	64,855	66,700	85,300	118,872	121,590	2.3
<b>Q4</b>	<b>190,567</b>	<b>192,600</b>	<b>274,057</b>	<b>316,798</b>	<b>272,071</b>	<b>276,854</b>	<b>377,083</b>	<b>442,972</b>	<b>576,123</b>	<b>30.1</b>
October	48,720	54,344	71,086	86,833	79,200	77,553	108,241	122,450	159,067	29.9
November	67,722	67,704	95,058	107,330	95,984	90,472	136,468	148,656	190,614	28.2
December	74,125	70,552	107,913	122,635	96,887	108,829	132,374	171,866	226,442	31.8
<b>Total</b>	<b>560,947</b>	<b>692,004</b>	<b>856,157</b>	<b>1,120,586</b>	<b>1,059,870</b>	<b>998,084</b>	<b>1,305,256</b>	<b>1,610,076</b>	<b>2,063,336</b>	<b>28.2</b>



### International Tourist Arrivals to Siem Reap International Airport by Months in 2012

(by Air only)

Months	2007	2008	2009	2010	2011	2012	Change (%)			
							2009/08	2010/09	2011/10	2012*/11
<b>Q1</b>	<b>237,244</b>	<b>237,857</b>	<b>193,717</b>	<b>212,527</b>	<b>256,871</b>	<b>326,348</b>	<b>-18.6</b>	<b>9.7</b>	<b>20.9</b>	<b>27.0</b>
January	85,240	81,875	70,489	72,411	93,276	119,543	-13.9	2.7	28.8	28.2
February	78,026	80,882	62,994	70,028	87,806	109,026	-22.1	11.2	25.4	24.2
March	73,978	75,100	60,234	70,088	75,789	97,779	-19.8	16.4	8.1	29.0
<b>Q2</b>	<b>155,423</b>	<b>133,099</b>	<b>108,811</b>	<b>134,855</b>	<b>147,038</b>	<b>181,245</b>	<b>-18.2</b>	<b>23.9</b>	<b>9.0</b>	<b>23.3</b>
April	57,960	53,947	46,802	53,678	57,187	72,399	-13.2	14.7	6.5	26.6
May	50,165	45,157	34,735	42,411	45,395	56,762	-23.1	22.1	7.0	25.0
June	47,298	33,995	27,274	38,766	44,456	52,084	-19.8	42.1	14.7	17.2
<b>Q3</b>	<b>153,556</b>	<b>125,682</b>	<b>121,361</b>	<b>151,315</b>	<b>177,756</b>	<b>203,445</b>	<b>-3.4</b>	<b>24.7</b>	<b>17.5</b>	<b>14.5</b>
July	49,375	39,449	38,761	48,038	59,467	66,348	-1.7	23.9	23.8	11.6
August	57,212	47,692	47,121	58,089	68,484	78,944	-1.2	23.3	17.9	15.3
September	46,969	38,541	35,479	45,188	49,805	58,153	-7.9	27.4	10.2	16.8
<b>Q4</b>	<b>215,028</b>	<b>171,866</b>	<b>160,095</b>	<b>213,975</b>	<b>253,507</b>	<b>294,461</b>	<b>-6.8</b>	<b>33.7</b>	<b>18.5</b>	<b>16.2</b>
October	59,144	50,053	43,647	58,448	65,363	80,471	-12.8	33.9	11.8	23.1
November	76,992	58,967	52,545	78,947	88,410	98,245	-10.9	50.2	12.0	11.1
December	78,892	62,846	63,903	76,580	99,734	115,745	1.7	19.8	30.2	16.1
<b>Total</b>	<b>761,251</b>	<b>668,504</b>	<b>583,984</b>	<b>712,672</b>	<b>835,172</b>	<b>1,005,499</b>	<b>-12.6</b>	<b>22.0</b>	<b>17.2</b>	<b>20.4</b>

**International Tourist Arrivals to Siem Reap International Airport by Country of Residence in 2012**

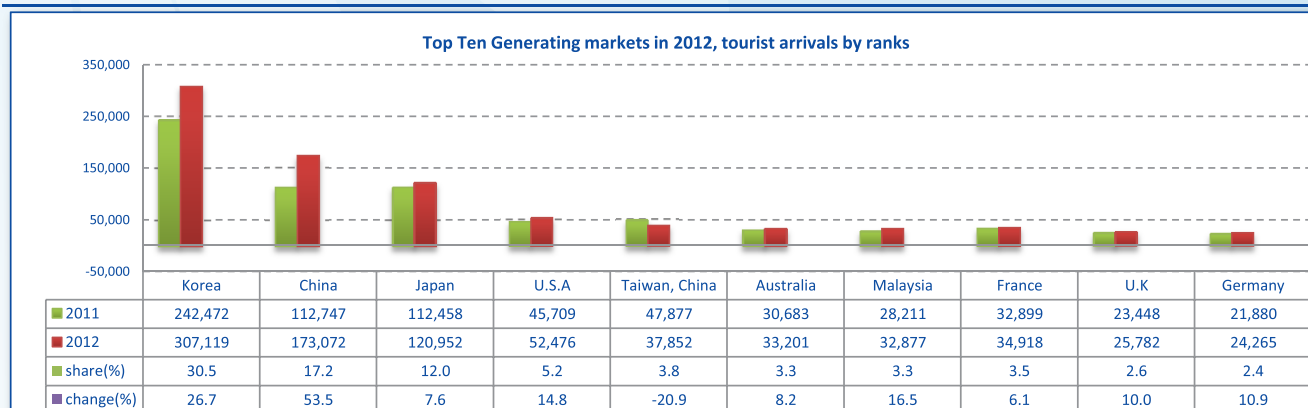
(by Air only)

Regions Country of Residence	2012												Total	share (%) 2012*
	Jan	Feb	Mar	Apr	May	Jun	Jul	Aug	Sep	Oct	Nov	Dec		
<b>GRAND TOTAL</b>	<b>119,543</b>	<b>109,026</b>	<b>97,779</b>	<b>72,399</b>	<b>56,762</b>	<b>52,084</b>	<b>66,348</b>	<b>78,944</b>	<b>58,153</b>	<b>80,471</b>	<b>98,245</b>	<b>115,745</b>	<b>1,005,499</b>	<b>100.0</b>
<b>Asia and the Pacific</b>	<b>92,649</b>	<b>83,809</b>	<b>72,467</b>	<b>53,903</b>	<b>45,301</b>	<b>43,005</b>	<b>51,953</b>	<b>62,621</b>	<b>48,373</b>	<b>63,255</b>	<b>69,796</b>	<b>87,895</b>	<b>775,027</b>	<b>77.1</b>
<b>ASEAN</b>	<b>5,755</b>	<b>5,622</b>	<b>6,318</b>	<b>6,423</b>	<b>8,392</b>	<b>7,217</b>	<b>6,184</b>	<b>6,810</b>	<b>6,446</b>	<b>8,163</b>	<b>9,531</b>	<b>9,974</b>	<b>86,835</b>	<b>8.6</b>
Brunei Darussalam	38	27	21	18	4	61	22	27	12	13	53	18	314	0.0
Indonesia	282	219	367	236	295	262	223	513	302	249	273	234	3,455	0.3
Lao PDR	60	71	42	52	89	59	84	73	70	57	80	136	873	0.1
Malaysia	2,179	2,095	2,583	2,515	2,984	3,127	2,438	2,913	2,262	2,397	3,673	3,711	32,877	3.3
Myanmar	132	186	149	345	39	41	101	60	29	38	48	88	1,256	0.1
Philippines	299	407	386	1,095	1,806	1,139	856	880	1,065	1,248	1,529	1,308	12,018	1.2
Singapore	846	1,051	1,454	917	1,739	1,582	1,005	952	1,064	1,006	1,952	2,086	15,654	1.6
Thailand	1,036	1,127	627	631	885	415	749	674	1,114	2,757	1,462	1,917	13,394	1.3
Vietnam	883	439	689	614	551	531	706	718	528	398	461	476	6,994	0.7
<b>Eastern Asia</b>	<b>81,560</b>	<b>74,775</b>	<b>62,356</b>	<b>43,105</b>	<b>34,228</b>	<b>32,522</b>	<b>42,098</b>	<b>52,832</b>	<b>38,455</b>	<b>50,948</b>	<b>55,865</b>	<b>72,704</b>	<b>641,448</b>	<b>63.8</b>
China (RPC)	21,102	13,284	12,104	10,206	8,041	8,398	14,453	15,490	14,324	16,895	18,627	20,148	173,072	17.2
Hong Kong SAR	203	120	203	366	128	133	148	75	87	217	304	417	2,401	0.2
Japan	11,122	12,440	14,895	7,393	6,642	5,875	6,299	13,269	9,255	8,031	11,893	13,838	120,952	12.0
Korea (ROK)	44,905	45,068	32,597	22,315	16,692	15,144	18,027	21,009	12,334	22,684	21,968	34,376	307,119	30.5
Mongolia	10	4	3	3	2	6	4	4	3	4	3	6	52	0.0
Taiwan, China	4,218	3,859	2,554	2,822	2,723	2,966	3,167	2,985	2,452	3,117	3,070	3,919	37,852	3.8
<b>Southern Asia</b>	<b>609</b>	<b>599</b>	<b>476</b>	<b>515</b>	<b>670</b>	<b>527</b>	<b>480</b>	<b>441</b>	<b>319</b>	<b>458</b>	<b>483</b>	<b>781</b>	<b>6,358</b>	<b>0.6</b>
Afghanistan	12	4	3	2	1	3	1	1	2	3	1	5	38	0.0
Bangladesh	2	4	17	6	9	4	3	1	3	24	3	15	91	0.0
Bhutan	6	8	3	2	7	4	7	1	2	3	1	3	47	0.0
India	565	560	409	468	530	484	419	401	298	390	407	709	5,640	0.6
Nepal	9	7	17	5	12	10	4	12	9	17	30	19	151	0.0
Pakistan	3	4	12	5	103	7	10	6	1	8	25	15	199	0.0
Sri Lanka	12	12	15	27	8	15	36	19	4	13	16	15	192	0.0
<b>Western Asia</b>	<b>21</b>	<b>11</b>	<b>30</b>	<b>8</b>	<b>15</b>	<b>15</b>	<b>8</b>	<b>11</b>	<b>7</b>	<b>3</b>	<b>16</b>	<b>18</b>	<b>163</b>	<b>0.0</b>
Kazakhstan	16	8	28	6	11	12	4	5	6	1	11	17	125	0.0
Uzbekistan	5	3	2	2	4	3	4	6	1	2	5	1	38	0.0
<b>Oceania</b>	<b>4,602</b>	<b>2,709</b>	<b>2,791</b>	<b>3,643</b>	<b>1,822</b>	<b>2,591</b>	<b>3,031</b>	<b>2,175</b>	<b>2,900</b>	<b>2,955</b>	<b>3,837</b>	<b>4,161</b>	<b>37,217</b>	<b>3.7</b>
Australia	4,156	2,517	2,545	3,157	1,599	2,293	2,697	1,908	2,599	2,629	3,481	3,620	33,201	3.3
Fiji	2	6	5	3	1	2	4	2	1	4	5	3	38	0.0
New Zealand	444	186	241	483	222	296	330	265	300	322	351	538	3,978	0.4
Other Asia & the Pacific	102	93	496	209	174	133	152	352	246	728	64	257	3,006	0.3
<b>Europe</b>	<b>16,657</b>	<b>16,671</b>	<b>17,276</b>	<b>12,908</b>	<b>6,456</b>	<b>4,531</b>	<b>9,008</b>	<b>12,403</b>	<b>5,891</b>	<b>10,995</b>	<b>19,563</b>	<b>17,324</b>	<b>149,683</b>	<b>14.9</b>
<b>Northern Europe</b>	<b>3,986</b>	<b>4,229</b>	<b>3,607</b>	<b>2,752</b>	<b>1,465</b>	<b>1,615</b>	<b>2,551</b>	<b>2,144</b>	<b>1,636</b>	<b>2,889</b>	<b>4,634</b>	<b>4,370</b>	<b>35,878</b>	<b>3.6</b>
Denmark	259	242	251	146	83	68	215	117	68	144	240	145	1,978	0.2
Finland	155	171	99	31	71	161	69	16	62	59	118	144	1,156	0.1
Iceland	5	1	2	3	1	2	7	3	3	5	2	3	37	0.0
Ireland	176	163	142	108	87	97	259	126	88	160	172	167	1,745	0.2
Norway	217	303	201	150	71	85	126	49	61	121	238	279	1,901	0.2
Sweden	474	424	321	174	90	63	136	80	102	280	564	571	3,279	0.3
United Kingdom	2,700	2,925	2,591	2,140	1,062	1,139	1,739	1,753	1,252	2,120	3,300	3,061	25,782	2.6
<b>Western Europe</b>	<b>8,178</b>	<b>8,871</b>	<b>9,847</b>	<b>6,080</b>	<b>3,160</b>	<b>1,488</b>	<b>3,836</b>	<b>4,740</b>	<b>2,003</b>	<b>4,785</b>	<b>10,226</b>	<b>8,842</b>	<b>72,056</b>	<b>7.2</b>
Austria	407	492	348	99	59	42	81	106	51	131	263	294	2,373	0.2
Belgium	338	294	751	358	169	99	461	313	113	217	474	619	4,206	0.4
France	3,489	3,808	4,492	2,920	1,681	610	1,606	2,785	708	2,046	4,306	3,431	31,882	3.2
Germany	2,653	3,006	3,249	1,959	927	447	804	1,025	859	1,826	4,160	3,350	24,265	2.4
Luxembourg	25	9	12	23	5	6	12	19	4	18	35	29	197	0.0
Monaco	2	1	1	4	1	2	3	2	0	4	2	6	28	0.0
Netherlands	508	450	356	258	172	149	476	317	125	278	360	390	3,839	0.4
Switzerland	756	811	638	459	146	133	393	173	143	265	626	723	5,266	0.5
<b>Eastern Europe</b>	<b>2,677</b>	<b>2,048</b>	<b>1,870</b>	<b>1,314</b>	<b>767</b>	<b>415</b>	<b>473</b>	<b>685</b>	<b>620</b>	<b>1,096</b>	<b>2,244</b>	<b>1,846</b>	<b>16,055</b>	<b>1.6</b>
Bulgaria	62	59	28	20	36	6	9	17	7	36	45	64	389	0.0
Czech Republic	140	96	145	145	46	26	19	36	42	64	147	99	1,005	0.1
Estonia	18	34	25	2	4	4	5	12	1	2	97	49	253	0.0
Hungary	169	161	133	15	14	18	24	27	41	82	144	99	927	0.1
Lithuania	39	33	42	22	3	7	6	11	5	12	50	19	249	0.0
Poland	244	341	215	221	88	40	39	51	42	81	373	187	1,922	0.2
Romania	86	37	37	16	13	12	45	36	61	53	31	78	505	0.1
Russian Federation	1,669	1,132	1,103	703	511	269	290	427	352	677	1,219	1,125	9,477	0.9
Slovakia	50	31	40	65	10	9	18	37	42	32	61	40	435	0.0
Ukraine	200	124	102	105	42	24	18	31	27	57	77	86	893	0.1

**International Tourist Arrivals to Siem Reap International Airport by Country of Residence in 2012**

(by Air only)

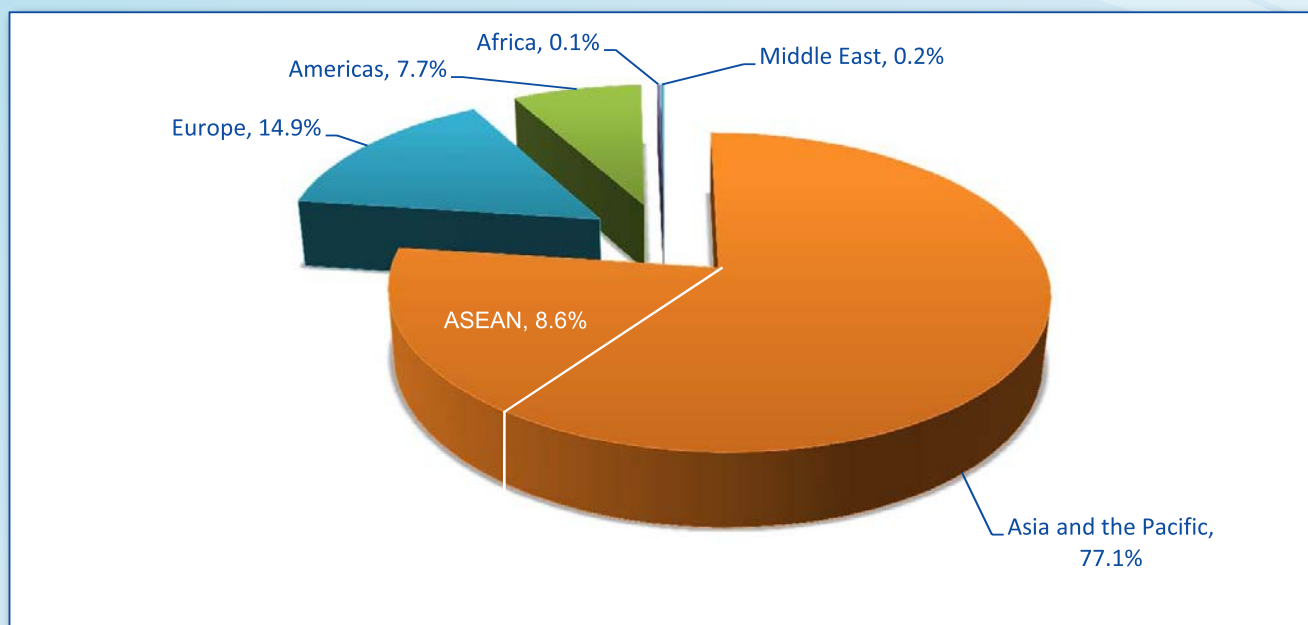
Regions Country of Residence	2012												Total	share (%) 2012*
	Jan	Feb	Mar	Apr	May	Jun	Jul	Aug	Sep	Oct	Nov	Dec		
<b>GRAND TOTAL</b>	<b>119,543</b>	<b>109,026</b>	<b>97,779</b>	<b>72,399</b>	<b>56,762</b>	<b>52,084</b>	<b>66,348</b>	<b>78,944</b>	<b>58,153</b>	<b>80,471</b>	<b>98,245</b>	<b>115,745</b>	<b>1,005,499</b>	<b>100.0</b>
<b>Southern Europe</b>	<b>1,688</b>	<b>1,438</b>	<b>1,623</b>	<b>2,595</b>	<b>786</b>	<b>889</b>	<b>1,954</b>	<b>4,581</b>	<b>1,457</b>	<b>1,879</b>	<b>2,408</b>	<b>1,942</b>	<b>23,240</b>	<b>2.3</b>
Croatia	9	14	56	6	5	7	5	9	3	4	21	21	160	0.0
Greece	38	21	22	31	19	10	43	80	47	15	21	23	370	0.0
Italy	943	786	513	340	217	195	364	1,363	224	322	825	863	6,955	0.7
Portugal	54	77	78	140	66	60	86	202	123	64	148	111	1,209	0.1
Serbia	16	7	13	8	5	4	10	3	10	19	10	19	124	0.0
Slovenia	38	23	54	21	8	3	12	22	2	12	22	65	282	0.0
Spain	514	435	756	2,026	452	568	1,404	2,874	1,032	1,068	1,274	695	13,098	1.3
Turkey	76	75	131	23	14	42	30	28	16	375	87	145	1,042	0.1
Other Europe	128	85	329	167	278	124	194	253	175	346	51	324	2,454	0.2
<b>Americas</b>	<b>9,807</b>	<b>8,287</b>	<b>7,738</b>	<b>5,340</b>	<b>4,842</b>	<b>4,402</b>	<b>5,157</b>	<b>3,680</b>	<b>3,631</b>	<b>5,849</b>	<b>8,583</b>	<b>9,933</b>	<b>77,249</b>	<b>7.7</b>
Argentina	394	316	245	265	127	57	42	83	51	131	204	123	2,038	0.2
Brazil	486	413	244	267	244	123	118	126	153	302	347	392	3,215	0.3
Canada	1,691	1,673	1,338	822	750	461	736	547	602	858	1,614	1,445	12,537	1.2
Chile	138	271	154	87	116	63	75	73	58	79	78	64	1,256	0.1
Colombia	68	13	59	85	38	171	50	59	70	86	48	75	822	0.1
Costa Rica	49	22	19	6	7	2	14	7	6	5	4	8	149	0.0
Ecuador	3	6	5	2	7	7	21	9	12	8	2	5	87	0.0
Mexico	216	133	266	233	248	238	381	119	161	283	366	346	2,990	0.3
Peru	24	20	23	21	25	16	8	15	19	29	32	19	251	0.0
United States	6,646	5,371	5,274	3,410	2,942	3,152	3,631	2,595	2,450	3,924	5,845	7,236	52,476	5.2
Uruguay	6	7	9	7	174	10	6	9	2	9	11	4	254	0.0
Other Americas	86	42	102	135	164	102	75	38	47	135	32	216	1,174	0.1
<b>Africa</b>	<b>152</b>	<b>92</b>	<b>114</b>	<b>82</b>	<b>91</b>	<b>104</b>	<b>127</b>	<b>100</b>	<b>111</b>	<b>174</b>	<b>96</b>	<b>263</b>	<b>1,506</b>	<b>0.1</b>
Cameroon	5	2	3	1	1	4	5	1	1	12	4	1	40	0.0
Congo	1	1	2	1	7	1	1	1	5	3	2	2	26	0.0
Ghana	6	1	4	1	9	4	3	1	2	6	4	5	46	0.0
Kenya	4	3	3	4	2	11	4	2	4	2	1	17	57	0.0
Liberia	2	1	5	4	4	3	0	1	1	4	2	3	30	0.0
Nigeria	4	9	3	1	7	2	6	16	6	6	4	8	72	0.0
Sudan	2	1	4	3	1	1	2	1	1	1	1	1	19	0.0
South Africa	113	62	61	54	48	58	84	57	68	90	63	203	961	0.1
Uganda	1	1	2	1	2	1	4	3	2	2	3	5	27	0.0
Other Africa	14	11	27	12	10	19	18	17	25	46	11	18	228	0.0
<b>Middle East</b>	<b>278</b>	<b>167</b>	<b>184</b>	<b>166</b>	<b>72</b>	<b>42</b>	<b>103</b>	<b>140</b>	<b>147</b>	<b>198</b>	<b>207</b>	<b>330</b>	<b>2,034</b>	<b>0.2</b>
Egypt	2	1	6	4	5	2	6	2	4	2	4	17	55	0.0
Iran	6	2	26	3	6	2	3	2	1	3	13	7	74	0.0
Iraq	2	1	3	2	2	3	1	1	2	2	1	1	21	0.0
Israel	246	145	101	135	38	15	59	109	108	157	159	256	1,528	0.2
Kuwait	6	1	5	2	4	1	4	3	3	2	10	6	47	0.0
Oman	4	0	2	1	2	1	1	2	2	3	2	4	24	0.0
Palestine	0	0	4	1	1	1	3	2	1	2	2	1	18	0.0
Qatar	0	0	9	1	1	1	2	1	2	1	1	1	20	0.0
Saudi Arabia	2	2	1	4	2	2	1	1	3	5	4	5	32	0.0
United Arab Emirates	2	4	1	3	2	1	2	3	2	1	2	5	28	0.0
Yemen	1	1	1	1	2	2	6	2	1	3	4	3	27	0.0
Other Middle East	7	10	25	9	7	11	15	12	18	17	5	24	160	0.0



**International Tourist arrivals to Siem Reap International Airport by Regions in 2012**

Months	Asia and the Pacific	ASEAN	Europe	Americas	Africa	Middle East	Total
<b>Q1</b>	<b>248,925</b>	<b>17,695</b>	<b>50,604</b>	<b>25,832</b>	<b>358</b>	<b>629</b>	<b>326,348</b>
January	92,649	5,755	16,657	9,807	152	278	119,543
February	83,809	5,622	16,671	8,287	92	167	109,026
March	72,467	6,318	17,276	7,738	114	184	97,779
<b>Q2</b>	<b>142,209</b>	<b>22,032</b>	<b>23,895</b>	<b>14,584</b>	<b>277</b>	<b>280</b>	<b>181,245</b>
April	53,903	6,423	12,908	5,340	82	166	72,399
May	45,301	8,392	6,456	4,842	91	72	56,762
June	43,005	7,217	4,531	4,402	104	42	52,084
<b>Q3</b>	<b>162,947</b>	<b>19,440</b>	<b>27,302</b>	<b>12,468</b>	<b>338</b>	<b>390</b>	<b>203,445</b>
July	51,953	6,184	9,008	5,157	127	103	66,348
August	62,621	6,810	12,403	3,680	100	140	78,944
September	48,373	6,446	5,891	3,631	111	147	58,153
<b>Q4</b>	<b>220,946</b>	<b>27,668</b>	<b>47,882</b>	<b>24,365</b>	<b>533</b>	<b>735</b>	<b>294,461</b>
October	63,255	8,163	10,995	5,849	174	198	80,471
November	69,796	9,531	19,563	8,583	96	207	98,245
December	87,895	9,974	17,324	9,933	263	330	115,745
<b>Total</b>	<b>775,027</b>	<b>86,835</b>	<b>149,683</b>	<b>77,249</b>	<b>1,506</b>	<b>2,034</b>	<b>1,005,499</b>
share (%)	77.1%	8.6%	14.9%	7.7%	0.1%	0.2%	100.0%

Note: ASEAN 10 countries was include in the Asia and the Pacific.



## International tourist arrivals to Siem Reap Int'l Airport in 2012

*by Air Only*

No.	from Destination	Total	Jan	Feb	Mar	Apr	May	Jun	Jul	Aug	Sep	Oct	Nov	Dec
1	<b>Thailand</b>	<b>110,080</b>	12,165	11,878	10,126	7,374	6,029	4,753	6,887	8,480	5,597	9,972	12,386	14,433
2	<b>Vietnam</b>	<b>413,708</b>	51,896	48,009	47,697	34,919	22,599	18,880	23,482	29,997	19,235	33,089	40,320	43,585
3	<b>Lao PDR</b>	<b>33,444</b>	4,469	4,195	3,520	2,216	1,427	1,237	2,158	2,575	1,359	2,162	4,427	3,699
4	<b>Singapore</b>	<b>59,651</b>	5,380	5,240	5,892	4,494	4,656	4,515	4,465	4,537	4,037	4,494	6,000	5,941
5	<b>Malaysia</b>	<b>64,756</b>	5,632	5,067	5,390	5,559	4,882	5,130	5,384	5,340	4,438	5,000	6,266	6,668
6	<b>Korea</b>	<b>135,140</b>	21,511	20,933	12,960	8,371	7,381	7,608	8,676	9,929	7,987	9,288	9,883	19,617
7	<b>China</b>	<b>136,172</b>	14,842	10,381	8,328	6,924	5,879	6,510	12,030	14,688	12,306	12,919	14,651	16,714
8	<b>Taiwan, China</b>	<b>30,360</b>	3,317	2,752	3,558	1,628	2,100	2,178	2,235	2,503	2,058	2,215	2,586	3,230
9	<b>Myanmar</b>	<b>1,823</b>	331	571	308	436	0	0	29	0	0	0	0	148
10	<b>Philippines</b>	<b>10,955</b>	0	0	0	478	1,809	1,273	1,002	895	1,136	1,332	1,502	1,528
11	<b>Germany</b>	<b>406</b>	0	0	0	0	0	0	0	0	0	0	224	182
	<b>Total</b>	<b>1,005,499</b>	<b>119,543</b>	<b>109,026</b>	<b>97,779</b>	<b>72,399</b>	<b>56,762</b>	<b>52,084</b>	<b>66,348</b>	<b>78,944</b>	<b>58,153</b>	<b>80,471</b>	<b>98,245</b>	<b>115,745</b>



International Tourist Arrivals to Siem Reap International Airport by Purpose of Visit in 2005 - 2012

Purpose of Visit	Int'l tourist arrivals								change (%) 2012*/11
	2005	2006	2007	2008	2009	2010	2011	2012	
<b>Total</b>	<b>440,125</b>	<b>599,675</b>	<b>761,251</b>	<b>668,504</b>	<b>583,984</b>	<b>712,672</b>	<b>835,172</b>	<b>1,005,499</b>	<b>20.4</b>
Holiday	426,807	591,474	751,537	656,776	574,571	704,254	826,441	983,389	19.0
Business	2,821	2,778	5,699	7,063	4,720	4,658	5,316	6,929	30.3
Other	10,497	5,423	4,015	4,665	4,693	3,760	3,415	15,181	344.5
<b>Q1</b>	<b>128,925</b>	<b>172,188</b>	<b>237,244</b>	<b>237,857</b>	<b>193,717</b>	<b>212,527</b>	<b>256,871</b>	<b>326,348</b>	<b>27.0</b>
Holiday	124,476	169,285	235,542	234,498	191,123	210,483	254,826	322,604	26.6
Business	661	612	940	2,036	1,533	1,111	1,296	1,672	29.0
Other	3,788	2,291	762	1,323	1,061	933	749	2,072	176.6
<b>Q2</b>	<b>75,133</b>	<b>109,623</b>	<b>155,423</b>	<b>133,099</b>	<b>108,811</b>	<b>134,855</b>	<b>147,038</b>	<b>181,245</b>	<b>23.3</b>
Holiday	72,383	108,051	153,170	130,453	106,707	132,877	144,934	176,445	21.7
Business	730	740	1,495	1,741	1,079	1,222	1,187	1,682	41.7
Other	2,020	832	758	905	1,025	756	917	3,118	240.0
<b>Q3</b>	<b>102,083</b>	<b>122,627</b>	<b>153,556</b>	<b>125,682</b>	<b>121,361</b>	<b>151,315</b>	<b>177,756</b>	<b>203,445</b>	<b>14.5</b>
Holiday	99,429	120,921	150,950	123,302	119,398	149,214	175,669	197,682	12.5
Business	607	758	1,691	1,526	978	1,123	1,308	1,729	32.2
Other	2,047	948	915	854	985	978	779	4,034	417.8
<b>Q4</b>	<b>133,984</b>	<b>195,237</b>	<b>215,028</b>	<b>171,866</b>	<b>160,095</b>	<b>213,975</b>	<b>253,507</b>	<b>294,461</b>	<b>16.2</b>
Holiday	130,519	193,217	211,875	168,523	157,343	211,680	251,012	286,658	14.2
Business	823	668	1,573	1,760	1,130	1,202	1,525	1,846	21.0
Other	2,642	1,352	1,580	1,583	1,622	1,093	970	5,957	514.1





## **SECTION III**

# **INTERNATIONAL BORDER CHECK POINTS**

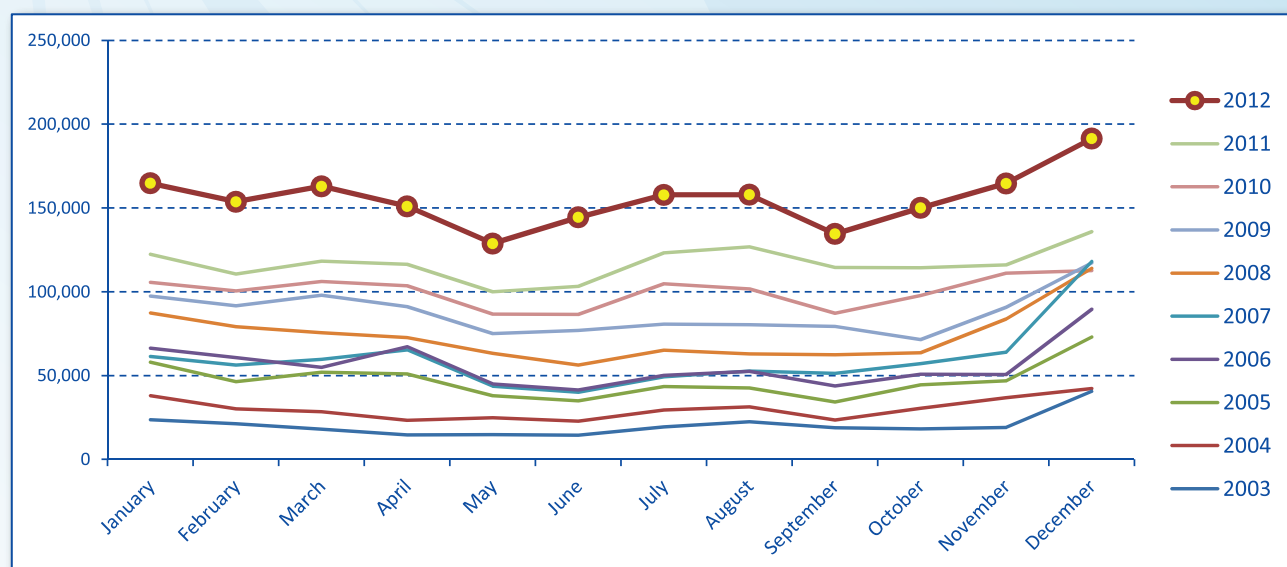
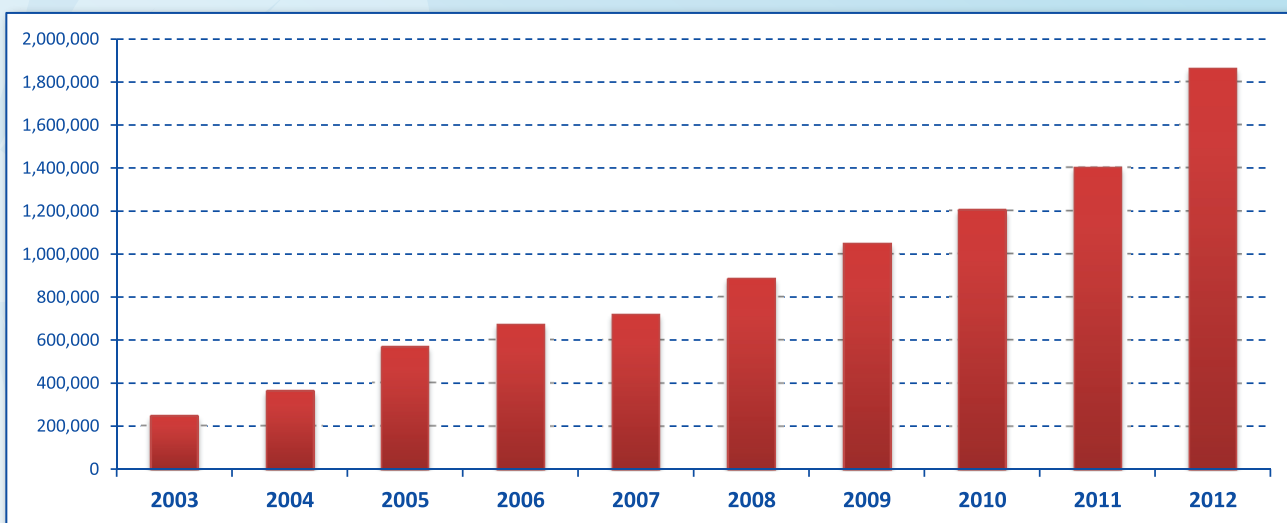


[www.cambodiaphotoplayer.com](http://www.cambodiaphotoplayer.com)

Russey Island, Shihanoukville Province

International Tourist Arrivals to Cambodia by Land and Water ways in 2003 - 2012

Months	2003	2004	2005	2006	2007	2008	2009	2010	2011	2012	change(%) 2012*/11
<b>Q1</b>	<b>63,007</b>	<b>96,499</b>	<b>156,263</b>	<b>181,914</b>	<b>177,219</b>	<b>242,182</b>	<b>287,075</b>	<b>312,186</b>	<b>351,038</b>	<b>481,454</b>	<b>37.2</b>
January	23,717	37,969	57,895	66,335	61,309	87,370	97,453	105,595	122,290	164,758	34.7
February	21,318	30,188	46,414	60,758	56,296	79,166	91,667	100,459	110,491	153,722	39.1
March	17,972	28,342	51,954	54,821	59,614	75,646	97,955	106,132	118,257	162,974	37.8
<b>Q2</b>	<b>43,633</b>	<b>70,997</b>	<b>123,980</b>	<b>153,640</b>	<b>148,911</b>	<b>192,006</b>	<b>243,009</b>	<b>276,597</b>	<b>319,618</b>	<b>424,319</b>	<b>32.8</b>
April	14,514	23,345	51,007	67,183	65,234	72,598	91,170	103,490	116,367	151,022	29.8
May	14,779	24,812	37,973	45,007	43,567	63,211	74,979	86,622	99,989	128,822	28.8
June	14,340	22,840	35,000	41,450	40,110	56,197	76,860	86,485	103,262	144,475	39.9
<b>Q3</b>	<b>60,655</b>	<b>84,257</b>	<b>120,384</b>	<b>146,418</b>	<b>153,292</b>	<b>190,503</b>	<b>240,249</b>	<b>293,770</b>	<b>364,473</b>	<b>450,347</b>	<b>23.6</b>
July	19,350	29,521	43,496	50,092	49,312	65,207	80,700	104,792	123,185	157,877	28.2
August	22,376	31,316	42,679	52,546	52,732	62,914	80,283	101,777	126,763	157,899	24.6
September	18,929	23,420	34,209	43,780	51,248	62,382	79,266	87,201	114,525	134,571	17.5
<b>Q4</b>	<b>77,747</b>	<b>109,485</b>	<b>164,467</b>	<b>191,005</b>	<b>239,193</b>	<b>261,367</b>	<b>279,515</b>	<b>321,436</b>	<b>366,326</b>	<b>506,104</b>	<b>38.2</b>
October	18,204	30,476	44,475	50,798	57,039	63,543	71,434	97,714	114,368	150,051	31.2
November	18,963	36,709	46,946	50,587	64,016	83,758	90,844	111,142	116,124	164,649	41.8
December	40,580	42,300	73,046	89,620	118,138	114,066	117,237	112,580	135,834	191,404	40.9
<b>Total</b>	<b>245,042</b>	<b>361,238</b>	<b>565,094</b>	<b>672,977</b>	<b>718,615</b>	<b>886,058</b>	<b>1,049,848</b>	<b>1,203,989</b>	<b>1,401,455</b>	<b>1,862,224</b>	<b>32.9</b>



**Int'l Tourist Arrivals to Cambodia by Land and Waterways by Country of Residence in 2012**  
(by Land and waterway)

Regions Country of Residence	2012													share (%)
	Jan	Feb	Mar	Apr	May	Jun	Jul	Aug	Sep	Oct	Nov	Dec	Total	2012*
<b>GRAND TOTAL</b>	<b>164,758</b>	<b>153,722</b>	<b>162,974</b>	<b>151,022</b>	<b>128,822</b>	<b>144,475</b>	<b>157,877</b>	<b>157,899</b>	<b>134,571</b>	<b>150,051</b>	<b>164,649</b>	<b>191,404</b>	<b>1,862,224</b>	<b>100.0</b>
<b>Asia and the Pacific</b>	<b>110,967</b>	<b>106,342</b>	<b>118,024</b>	<b>121,962</b>	<b>107,481</b>	<b>125,566</b>	<b>130,708</b>	<b>128,225</b>	<b>116,034</b>	<b>124,095</b>	<b>121,978</b>	<b>141,678</b>	<b>1,453,060</b>	<b>78.0</b>
<b>ASEAN</b>	<b>91,558</b>	<b>90,196</b>	<b>101,381</b>	<b>107,353</b>	<b>95,836</b>	<b>112,015</b>	<b>116,428</b>	<b>113,200</b>	<b>102,765</b>	<b>109,128</b>	<b>105,707</b>	<b>120,975</b>	<b>1,266,542</b>	<b>68.0</b>
Brunei Darussalam	1	5	6	0	2	0	3	2	5	8	4	21	57	0.0
Indonesia	755	767	315	826	990	932	969	1,484	954	1,043	1,089	1,350	11,474	0.6
Lao PDR	14,701	16,153	17,815	12,499	18,700	21,961	23,729	24,197	25,104	23,927	23,469	28,624	250,879	13.5
Malaysia	1,303	1,286	1,333	1,595	1,285	1,296	1,428	1,666	1,185	1,457	1,602	2,084	17,520	0.9
Myanmar	83	77	74	128	91	106	62	71	66	60	82	268	1,168	0.1
Philippines	6,740	6,238	6,916	7,516	6,859	6,101	5,711	6,101	6,381	7,157	6,467	7,077	79,264	4.3
Singapore	605	527	616	612	733	710	664	611	497	609	570	783	7,537	0.4
Thailand	10,429	10,374	12,826	18,251	9,623	10,681	10,166	14,874	10,550	17,639	12,838	19,208	157,459	8.5
Vietnam	56,941	54,769	61,480	65,926	57,553	70,228	73,696	64,194	58,023	57,228	59,586	61,560	741,184	39.8
<b>Eastern Asia</b>	<b>11,843</b>	<b>11,430</b>	<b>11,963</b>	<b>10,501</b>	<b>8,631</b>	<b>8,696</b>	<b>10,129</b>	<b>11,345</b>	<b>9,949</b>	<b>10,304</b>	<b>10,649</b>	<b>13,254</b>	<b>128,694</b>	<b>6.9</b>
China (RPC)	2,993	2,783	2,841	3,313	2,114	2,008	2,689	2,935	2,529	3,434	2,871	4,065	34,575	1.9
Hong Kong SAR	423	243	527	526	688	539	414	285	256	469	633	824	5,827	0.3
Japan	1,754	2,255	2,722	1,572	1,400	1,344	1,409	2,854	2,706	1,628	1,745	2,068	23,457	1.3
Korea (ROK)	5,496	5,300	4,770	3,989	3,604	3,911	4,625	4,285	3,531	3,794	4,466	5,237	53,008	2.8
Mongolia	22	6	20	11	18	5	7	6	6	6	14	17	138	0.0
Taiwan, China	1,155	843	1,083	1,090	807	889	985	980	921	973	920	1,043	11,689	0.6
<b>Southern Asia</b>	<b>460</b>	<b>345</b>	<b>435</b>	<b>591</b>	<b>705</b>	<b>441</b>	<b>448</b>	<b>629</b>	<b>457</b>	<b>507</b>	<b>577</b>	<b>1,020</b>	<b>6,615</b>	<b>0.4</b>
Afghanistan	0	2	3	2	1	1	1	0	4	2	5	8	29	0.0
Bangladesh	18	7	4	16	14	17	21	13	17	6	20	28	181	0.0
Bhutan	1	1	2	2	8	6	0	2	1	1	0	6	30	0.0
India	373	254	381	492	496	372	341	478	401	431	526	800	5,345	0.3
Nepal	29	48	26	53	155	22	25	92	22	30	16	115	633	0.0
Pakistan	22	27	13	15	15	16	21	25	10	19	3	28	214	0.0
Sri Lanka	17	6	6	11	16	7	39	19	2	18	7	35	183	0.0
<b>Western Asia</b>	<b>297</b>	<b>207</b>	<b>200</b>	<b>121</b>	<b>69</b>	<b>67</b>	<b>92</b>	<b>83</b>	<b>87</b>	<b>99</b>	<b>164</b>	<b>241</b>	<b>1,727</b>	<b>0.1</b>
Kazakhstan	245	186	157	71	29	34	59	51	47	69	144	188	1,280	0.1
Uzbekistan	52	21	43	50	40	33	33	32	40	30	20	53	447	0.0
<b>Oceania</b>	<b>6,696</b>	<b>3,980</b>	<b>3,778</b>	<b>2,881</b>	<b>2,121</b>	<b>4,237</b>	<b>3,416</b>	<b>2,685</b>	<b>2,615</b>	<b>2,820</b>	<b>4,839</b>	<b>5,799</b>	<b>45,867</b>	<b>2.5</b>
Australia	5,768	3,522	3,327	2,432	1,645	3,806	2,886	2,200	2,203	2,384	3,306	4,827	38,306	2.1
Fiji	5	0	1	1	0	1	2	1	3	4	2	1	21	0.0
New Zealand	923	458	450	448	476	430	528	484	409	432	1,531	971	7,540	0.4
Other Asia & the Pacific	113	184	267	515	119	110	195	283	161	1,237	42	389	3,615	0.2
<b>Europe</b>	<b>42,138</b>	<b>37,313</b>	<b>35,282</b>	<b>22,135</b>	<b>15,342</b>	<b>13,341</b>	<b>20,754</b>	<b>23,987</b>	<b>14,022</b>	<b>20,265</b>	<b>35,102</b>	<b>39,912</b>	<b>319,593</b>	<b>17.2</b>
<b>Northern Europe</b>	<b>10,714</b>	<b>10,706</b>	<b>10,214</b>	<b>5,925</b>	<b>4,655</b>	<b>4,649</b>	<b>5,888</b>	<b>5,634</b>	<b>3,693</b>	<b>5,137</b>	<b>7,417</b>	<b>8,783</b>	<b>83,415</b>	<b>4.5</b>
Denmark	838	719	598	377	344	252	468	312	162	303	519	601	5,493	0.3
Finland	661	428	353	246	154	140	120	72	89	142	315	508	3,228	0.2
Iceland	46	32	41	51	4	75	30	6	11	14	29	34	373	0.0
Ireland	453	459	378	293	321	400	595	514	288	441	512	480	5,134	0.3
Norway	704	591	552	396	236	211	354	145	145	211	317	407	4,269	0.2
Sweden	1,758	1,555	1,088	624	363	238	264	231	189	331	765	1,326	8,732	0.5
United Kingdom	6,254	6,922	7,204	3,938	3,233	3,333	4,057	4,354	2,809	3,695	4,960	5,427	56,186	3.0
<b>Western Europe</b>	<b>13,492</b>	<b>12,561</b>	<b>12,006</b>	<b>7,125</b>	<b>5,130</b>	<b>4,320</b>	<b>8,983</b>	<b>9,951</b>	<b>4,678</b>	<b>5,775</b>	<b>10,709</b>	<b>12,178</b>	<b>106,908</b>	<b>5.7</b>
Austria	571	601	391	257	158	129	331	348	158	167	425	537	4,073	0.2
Belgium	727	676	574	410	283	281	795	593	312	346	680	779	6,456	0.3
France	4,538	4,656	3,935	2,947	2,026	1,704	3,933	4,561	1,506	2,261	3,813	3,968	39,848	2.1
Germany	4,133	4,209	5,031	2,221	1,529	1,175	1,722	2,532	1,830	1,673	3,334	4,064	33,453	1.8
Luxembourg	12	20	14	11	6	4	6	22	0	4	21	24	144	0.0
Monaco	2	0	0	1	1	0	1	2	0	0	1	2	10	0.0
Netherlands	2,098	1,503	1,308	823	768	759	1,742	1,431	652	1,009	1,616	1,861	15,570	0.8
Switzerland	1,411	896	753	455	359	268	453	462	220	315	819	943	7,354	0.4
<b>Eastern Europe</b>	<b>15,388</b>	<b>11,870</b>	<b>10,817</b>	<b>7,280</b>	<b>4,394</b>	<b>3,428</b>	<b>3,843</b>	<b>4,342</b>	<b>4,216</b>	<b>6,986</b>	<b>14,562</b>	<b>15,717</b>	<b>102,843</b>	<b>5.5</b>
Bulgaria	13	15	13	17	1	3	13	5	8	14	28	36	166	0.0
Czech Republic	406	406	309	135	65	59	131	106	55	109	353	319	2,453	0.1
Estonia	68	108	88	22	8	6	29	6	9	64	73	89	570	0.0
Hungary	212	239	137	63	39	31	50	50	36	106	147	164	1,274	0.1
Lithuania	104	98	119	30	19	64	19	13	15	47	123	95	746	0.0
Poland	873	797	618	533	169	236	274	293	303	376	1,379	1,043	6,894	0.4
Romania	76	27	47	22	30	16	39	7	22	45	32	57	420	0.0
Russian Federation	13,084	9,627	9,017	6,203	3,811	2,882	3,097	3,671	3,582	5,856	11,778	13,275	85,883	4.6
Slovakia	115	96	136	81	38	30	26	30	21	48	130	89	840	0.0
Ukraine	437	457	333	174	214	101	165	161	165	321	519	550	3,597	0.2

**Int'l Tourist Arrivals to Cambodia by Land and Waterways by Country of Residence in 2012**  
(by Land and waterway)

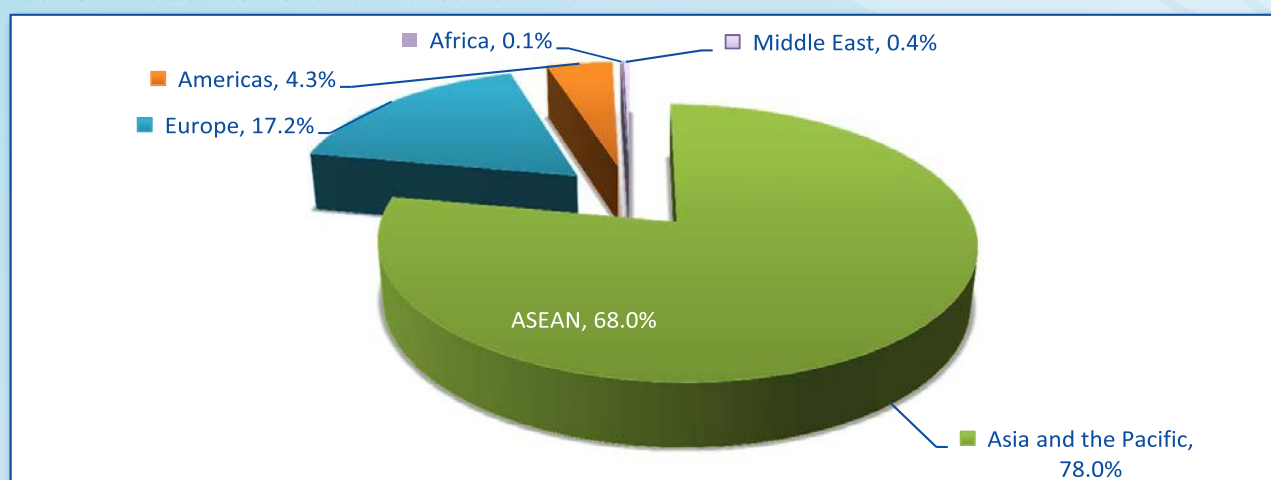
Regions Country of Residence	2012												Total	share (%) 2012*
	Jan	Feb	Mar	Apr	May	Jun	Jul	Aug	Sep	Oct	Nov	Dec		
<b>GRAND TOTAL</b>	<b>164,758</b>	<b>153,722</b>	<b>162,974</b>	<b>151,022</b>	<b>128,822</b>	<b>144,475</b>	<b>157,877</b>	<b>157,899</b>	<b>134,571</b>	<b>150,051</b>	<b>164,649</b>	<b>191,404</b>	<b>1,862,224</b>	<b>100.0</b>
<b>Southern Europe</b>	<b>2,476</b>	<b>2,140</b>	<b>1,908</b>	<b>1,230</b>	<b>972</b>	<b>837</b>	<b>1,752</b>	<b>3,732</b>	<b>1,149</b>	<b>1,558</b>	<b>2,368</b>	<b>2,968</b>	<b>23,090</b>	<b>1.2</b>
Croatia	79	42	22	17	19	14	31	25	13	14	68	64	408	0.0
Greece	64	56	46	33	9	9	17	40	14	24	25	54	391	0.0
Italy	1,306	1,177	978	444	357	270	514	1,664	386	556	940	1,670	10,262	0.6
Portugal	164	62	104	89	74	40	64	182	46	104	136	214	1,279	0.1
Serbia	37	17	16	6	8	0	5	12	2	23	30	25	181	0.0
Slovenia	73	71	62	41	28	11	35	18	10	30	60	70	509	0.0
Spain	595	601	586	469	363	403	991	1,717	602	672	975	668	8,642	0.5
Turkey	158	114	94	131	114	90	95	74	76	135	134	203	1,418	0.1
Other Europe	68	36	337	575	191	107	288	328	286	809	46	266	3,337	0.2
<b>Americas</b>	<b>10,560</b>	<b>8,824</b>	<b>8,837</b>	<b>6,333</b>	<b>5,293</b>	<b>5,073</b>	<b>5,883</b>	<b>5,073</b>	<b>3,853</b>	<b>5,018</b>	<b>6,966</b>	<b>8,849</b>	<b>80,562</b>	<b>4.3</b>
Argentina	430	315	159	154	131	111	108	74	101	168	142	140	2,033	0.1
Brazil	175	106	97	95	87	54	84	85	82	88	99	171	1,223	0.1
Canada	2,767	2,867	2,494	1,482	1,337	1,135	1,408	1,029	629	1,125	1,737	2,167	20,177	1.1
Chile	164	227	133	75	124	77	87	115	78	70	89	180	1,419	0.1
Colombia	48	27	18	28	22	42	33	76	42	26	46	37	445	0.0
Costa Rica	3	2	0	2	2	6	6	4	8	10	8	6	57	0.0
Ecuador	1	2	7	0	0	1	3	7	11	1	3	8	44	0.0
Mexico	65	47	32	44	50	53	87	47	24	44	93	96	682	0.0
Peru	20	15	30	15	7	14	26	16	13	14	28	23	221	0.0
United States	6,852	5,157	5,602	4,094	3,258	3,514	3,957	3,367	2,556	3,322	4,689	5,691	52,059	2.8
Uruguay	18	8	19	28	73	1	0	9	26	0	12	23	217	0.0
Other Americas	17	51	246	316	202	65	84	244	283	150	20	307	1,985	0.1
<b>Africa</b>	<b>198</b>	<b>160</b>	<b>179</b>	<b>161</b>	<b>170</b>	<b>134</b>	<b>172</b>	<b>194</b>	<b>171</b>	<b>226</b>	<b>143</b>	<b>372</b>	<b>2,280</b>	<b>0.1</b>
Cameroon	9	24	14	9	17	4	1	6	6	28	1	5	124	0.0
Congo	1	3	1	0	3	0	1	1	4	0	1	4	19	0.0
Ghana	5	14	15	5	2	3	1	7	4	2	2	3	63	0.0
Kenya	4	1	5	0	2	2	5	6	1	10	3	14	53	0.0
Liberia	5	10	8	2	6	4	0	1	2	1	2	0	41	0.0
Nigeria	4	17	11	11	12	10	15	4	6	9	6	6	111	0.0
Sudan	1	1	0	2	0	0	2	1	0	3	0	3	13	0.0
South Africa	162	85	100	124	118	100	104	130	97	123	122	323	1,588	0.1
Uganda	4	1	0	2	3	1	2	3	0	1	0	1	18	0.0
Other Africa	3	4	25	6	7	10	41	35	51	49	6	13	250	0.0
<b>Middle East</b>	<b>895</b>	<b>1,083</b>	<b>652</b>	<b>431</b>	<b>536</b>	<b>361</b>	<b>360</b>	<b>420</b>	<b>491</b>	<b>447</b>	<b>460</b>	<b>593</b>	<b>6,729</b>	<b>0.4</b>
Egypt	6	2	2	4	4	5	4	3	8	8	12	5	63	0.0
Iran	44	36	26	40	37	37	31	39	26	25	37	35	413	0.0
Iraq	0	3	3	3	0	1	1	3	3	1	1	1	20	0.0
Israel	749	982	530	323	443	149	223	297	319	302	321	479	5,117	0.3
Kuwait	68	47	24	18	14	126	54	31	64	71	50	40	607	0.0
Oman	11	0	5	7	7	20	4	9	10	8	15	6	102	0.0
Palestine	0	2	0	0	0	0	0	2	3	1	1	3	12	0.0
Qatar	1	0	10	3	1	1	1	1	2	1	3	1	25	0.0
Saudi Arabia	3	3	1	1	2	3	1	2	0	1	0	5	22	0.0
United Arab Emirates	6	5	21	23	23	12	16	13	26	20	16	12	193	0.0
Yemen	2	0	2	2	2	1	19	3	2	2	1	2	38	0.0
Other Middle East	5	3	28	7	3	6	6	17	28	7	3	4	117	0.0



**International Tourist Arrivals to Cambodia by Land and Water ways by Regions in 2012**

Months	Asia and the Pacific	ASEAN	Europe	Americas	Africa	Middle East	Total
<b>Q1</b>	<b>335,333</b>	<b>283,135</b>	<b>114,733</b>	<b>28,221</b>	<b>537</b>	<b>2,630</b>	<b>481,454</b>
January	110,967	91,558	42,138	10,560	198	895	164,758
February	106,342	90,196	37,313	8,824	160	1,083	153,722
March	118,024	101,381	35,282	8,837	179	652	162,974
<b>Q2</b>	<b>355,009</b>	<b>315,204</b>	<b>50,818</b>	<b>16,699</b>	<b>465</b>	<b>1,328</b>	<b>424,319</b>
April	121,962	107,353	22,135	6,333	161	431	151,022
May	107,481	95,836	15,342	5,293	170	536	128,822
June	125,566	112,015	13,341	5,073	134	361	144,475
<b>Q3</b>	<b>374,967</b>	<b>332,393</b>	<b>58,763</b>	<b>14,809</b>	<b>537</b>	<b>1,271</b>	<b>450,347</b>
July	130,708	116,428	20,754	5,883	172	360	157,877
August	128,225	113,200	23,987	5,073	194	420	157,899
September	116,034	102,765	14,022	3,853	171	491	134,571
<b>Q4</b>	<b>387,751</b>	<b>335,810</b>	<b>95,279</b>	<b>20,833</b>	<b>741</b>	<b>1,500</b>	<b>506,104</b>
October	124,095	109,128	20,265	5,018	226	447	150,051
November	121,978	105,707	35,102	6,966	143	460	164,649
December	141,678	120,975	39,912	8,849	372	593	191,404
<b>Total</b>	<b>1,453,060</b>	<b>1,266,542</b>	<b>319,593</b>	<b>80,562</b>	<b>2,280</b>	<b>6,729</b>	<b>1,862,224</b>
share (%)	78.0%	68.0%	17.2%	4.3%	0.1%	0.4%	100.0%

Note: ASEAN 10 countries was include in the Asia and the Pacific.



**International Tourist Arrivals to Cambodia by Land and Water ways by Purpose of Visit in 2003 - 2012**

Purpose of Visit	Int'l tourist arrivals									change (%) 2012*/11
	2004	2005	2006	2007	2008	2009	2010	2011	2012	
<b>Total</b>	<b>361,238</b>	<b>565,094</b>	<b>672,977</b>	<b>718,615</b>	<b>886,058</b>	<b>1,049,848</b>	<b>1,203,989</b>	<b>1,401,455</b>	<b>1,862,224</b>	<b>32.9</b>
Holiday	337,065	460,355	635,196	657,332	816,218	994,433	1,148,858	1,346,524	1,771,277	31.5
Business	18,546	22,409	31,584	53,324	61,431	46,179	45,987	46,846	53,364	13.9
Other	5,627	82,330	6,197	7,959	8,409	9,236	9,144	8,085	37,583	364.8
<b>Q1</b>	<b>96,499</b>	<b>156,263</b>	<b>181,914</b>	<b>177,219</b>	<b>242,182</b>	<b>287,075</b>	<b>312,186</b>	<b>351,038</b>	<b>481,454</b>	<b>37.2</b>
Holiday	91,074	123,851	174,201	165,879	225,121	273,078	298,831	338,057	455,413	34.7
Business	4,320	4,790	6,451	9,596	14,938	11,834	11,257	11,032	10,747	-2.6
Other	1,105	27,622	1,262	1,744	2,123	2,163	2,098	1,949	15,294	684.7
<b>Q2</b>	<b>70,997</b>	<b>123,980</b>	<b>153,640</b>	<b>148,911</b>	<b>192,006</b>	<b>243,009</b>	<b>276,597</b>	<b>319,618</b>	<b>424,319</b>	<b>32.8</b>
Holiday	65,756	96,612	144,742	134,657	173,996	228,833	262,426	304,828	402,093	31.9
Business	3,904	5,254	7,320	12,108	15,769	11,697	11,797	12,581	13,812	9.8
Other	1,337	22,114	1,578	2,146	2,241	2,479	2,374	2,209	8,414	280.9
<b>Q3</b>	<b>84,257</b>	<b>120,384</b>	<b>146,418</b>	<b>153,292</b>	<b>190,503</b>	<b>240,249</b>	<b>293,770</b>	<b>364,473</b>	<b>450,347</b>	<b>23.6</b>
Holiday	78,045	113,759	136,244	136,951	173,112	227,026	281,572	350,709	429,512	22.5
Business	4,791	5,479	8,453	14,632	15,498	11,073	10,183	11,801	13,303	12.7
Other	1,421	1,146	1,721	1,709	1,893	2,150	2,015	1,963	7,532	283.7
<b>Q4</b>	<b>109,485</b>	<b>164,467</b>	<b>191,005</b>	<b>239,193</b>	<b>261,367</b>	<b>279,515</b>	<b>321,436</b>	<b>366,326</b>	<b>506,104</b>	<b>38.2</b>
Holiday	102,190	126,133	180,009	219,845	243,989	265,496	306,029	352,930	484,259	37.2
Business	5,531	6,886	9,360	16,988	15,226	11,575	12,750	11,432	15,502	35.6
Other	1,764	31,448	1,636	2,360	2,152	2,444	2,657	1,964	6,343	223.0



## **UNIT II**

# **DOMESTIC TOURISM**





[www.cambodiaphotoplayer.com](http://www.cambodiaphotoplayer.com)

Ta Tai Waterfall, Koh Kong Province

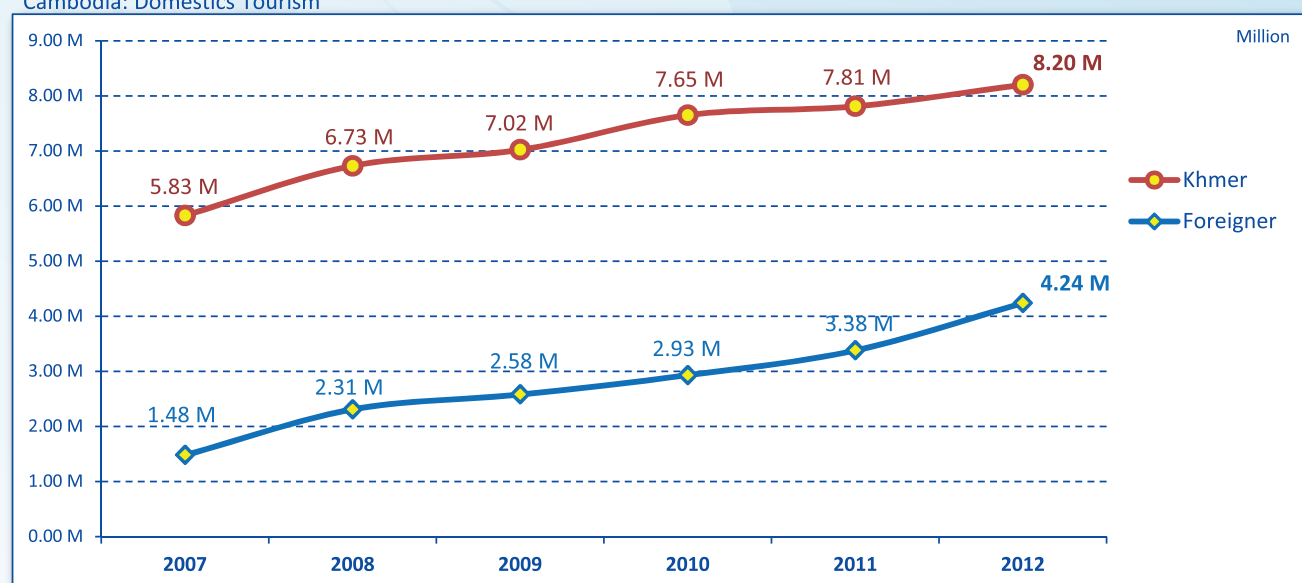
Domestics Tourism Statistics Report in 2010 - 2012

No.	Destinations	2010		2011		2012		share (%)		change (%)	
		KHM	INT	KHM	INT	KHM	INT	2012*		2012*/11	
								KHM	INT	KHM	INT
<b>I</b>	<b>Phnom Penh</b>	<b>2,001,850</b>	<b>1,203,033</b>	<b>2,124,065</b>	<b>1,307,498</b>	<b>1,984,612</b>	<b>1,520,971</b>	<b>24.0</b>	<b>35.9</b>	<b>-6.6</b>	<b>16.3</b>
<b>II</b>	<b>Cultural Areas</b>	<b>1,744,768</b>	<b>1,333,642</b>	<b>1,815,755</b>	<b>1,644,267</b>	<b>2,125,322</b>	<b>2,107,982</b>	<b>25.7</b>	<b>49.7</b>	<b>17.0</b>	<b>28.2</b>
1	Kampong Thom	53,130	16,165	58,587	21,882	75,505	22,272	0.9	0.5	28.9	1.8
2	Oddar Meanchey	93,304	972	23,312	1,767	43,598	3,186	0.5	0.1	87.0	80.3
3	Preah Vihear	21,087	11,249	32,506	10,542	48,361	19,188	0.6	0.5	48.8	82.0
4	Siem Reap	1,577,247	1,305,256	1,701,350	1,610,076	1,957,858	2,063,336	23.7	48.7	15.1	28.2
<b>III</b>	<b>Costal Areas</b>	<b>1,200,413</b>	<b>162,080</b>	<b>1,691,829</b>	<b>193,093</b>	<b>1,827,927</b>	<b>280,658</b>	<b>22.1</b>	<b>6.6</b>	<b>8.0</b>	<b>45.3</b>
1	Kampong Som	491,134	133,532	558,287	153,736	657,821	212,643	8.0	5.0	17.8	38.3
2	Kampot	238,147	16,940	316,376	17,198	401,528	24,972	4.9	0.6	26.9	45.2
3	Kep	372,092	6,922	740,313	8,763	685,780	35,316	8.3	0.8	-7.4	303.0
4	Koh Kong	99,040	4,686	76,853	13,396	82,798	7,727	1.0	0.2	7.7	-42.3
<b>IV</b>	<b>Eco-tourism</b>	<b>226,495</b>	<b>43,409</b>	<b>285,783</b>	<b>48,674</b>	<b>371,127</b>	<b>53,388</b>	<b>4.5</b>	<b>1.3</b>	<b>29.9</b>	<b>9.7</b>
1	Kratie	22,408	13,733	35,941	17,296	48,412	19,714	0.6	0.5	34.7	14.0
2	Mondul Kiri	40,652	3,916	58,757	4,879	78,784	5,138	1.0	0.1	34.1	5.3
3	Rattanak Kiri	100,605	17,961	100,930	17,562	134,965	19,163	1.6	0.5	33.7	9.1
4	Stung Treng	62,830	7,799	90,155	8,937	108,966	9,373	1.3	0.2	20.9	4.9
<b>V</b>	<b>Battambang Areas</b>	<b>594,953</b>	<b>118,583</b>	<b>606,885</b>	<b>136,204</b>	<b>595,328</b>	<b>228,130</b>	<b>7.2</b>	<b>5.4</b>	<b>-1.9</b>	<b>67.5</b>
1	Banteay Meanchey	75,205	12,530	77,331	12,157	80,276	15,378	1.0	0.4	3.8	26.5
2	Battambang	226,541	40,562	288,598	58,941	317,010	72,314	3.8	1.7	9.8	22.7
3	Pailin	244,027	62,571	233,535	62,047	188,240	136,586	2.3	3.2	-19.4	120.1
4	Pursat	49,180	2,920	7,421	3,059	9,802	3,852	0.1	0.1	32.1	25.9
<b>VI</b>	<b>Others</b>	<b>1,794,220</b>	<b>67,494</b>	<b>1,286,748</b>	<b>48,034</b>	<b>1,349,544</b>	<b>49,581</b>	<b>16.4</b>	<b>1.2</b>	<b>4.9</b>	<b>3.2</b>
1	Kampong Cham	286,820	27,487	233,439	11,222	276,194	10,976	3.3	0.3	18.3	-2.2
2	Kampong Chhnang	11,327	3,306	15,484	4,335	14,484	3,428	0.2	0.1	-6.5	-20.9
3	Kampong Speu	23,265	14,341	17,060	12,127	22,701	13,511	0.3	0.3	33.1	11.4
4	Kandal	1,407,725	7,687	958,491	5,186	963,128	7,552	11.7	0.2	0.5	45.6
5	Prey Veng	14,254	2,343	10,761	1,602	9,682	3,046	0.1	0.1	-10.0	90.1
6	Svay Rieng	13,025	850	12,257	1,607	20,679	1,042	0.3	0.0	68.7	-35.2
7	Takeo	37,804	11,480	39,256	11,955	42,676	10,026	0.5	0.2	8.7	-16.1
	<b>TOTAL</b>	<b>7,562,699</b>	<b>2,928,241</b>	<b>7,811,065</b>	<b>3,377,770</b>	<b>8,253,860</b>	<b>4,240,710</b>	<b>100.0</b>	<b>100.0</b>	<b>5.7</b>	<b>25.5</b>

Note:

KHM: Cambodian Visitors  
INT: Foreigner Visitors

Cambodia: Domestics Tourism





## **UNIT III**

# **TOURISM SUPPLY SIDE**



[www.cambodiaphotoplayer.com](http://www.cambodiaphotoplayer.com)

Wat Sampov 5, Bokor Mountain, Kampot Province

**Tourism Supply Side: Accommodations**

**Number of Hotels and Guesthouse from 1997 - 2012**

Years	Hotels				Guesthouse			
	number	change (%)	rooms	change (%)	number	change (%)	rooms	change (%)
1997	179	0	6,989	0	60	0	477	0
1998	216	20.7	8,247	18.0	147	145.0	1,510	216.6
1999	221	2.3	9,115	10.5	186	26.5	1,897	25.6
2000	240	8.6	9,673	6.1	292	57.0	3,233	70.4
2001	247	2.9	10,804	11.7	370	26.7	3,899	20.6
2002	267	8.1	11,426	5.8	509	37.6	6,109	56.7
2003	292	9.4	13,201	15.5	549	7.9	6,497	6.4
2004	299	2.4	14,271	8.1	615	12.0	7,684	18.3
2005	317	6.0	15,465	8.4	684	11.2	9,000	17.1
2006	351	10.7	17,914	15.8	742	8.5	9,166	1.8
2007	395	12.5	20,470	14.3	891	20.1	11,563	26.2
2008	398	0.8	20,678	1.0	925	3.8	12,180	5.3
2009	451	13.3	23,010	11.3	1,018	10.1	14,512	19.1
2010	440	-2.4	24,393	6.0	1,087	6.8	15,321	5.6
2011	476	8.2	26,484	8.6	1,142	5.1	16,752	9.3
2012	490	2.9	27,117	2.4	1,296	13.5	19,329	15.4

**Hotels classifications by MOT in 2012**

**Phnom Penh Capital**

Raffles Hotel Le Royal	★★★★★
Imperial Garden Villa & Hotel	★★★★
Blue River Hotel	★★★★
Orusey Hotel	★★★
Castle Hotel	★★★
Champs Elysees Hotel	★★★
Almond Hotel	★★★
Salita Hotel	★★★
Goldiana Hotel	★★★
Washington Hotel	★★★
Grand Plaza	★★★
Phnom Penh Forever Hotel	★★★
Hang Neak Hotel	★★
Paradise Hotel	★★
Golden Gate 1	★★

**Preah Sihanouk Province**

Sokha Beach Resort Hotel	★★★★★
Independence Hotel	★★★★
ឧត្តមសាស	★★★

**Koh Kong Province**

Koh Kong Resort Hotel	★★★★★
Asian Khos Kong Hotel	★
Khos Kong City Hotel	★

**Battambang Province**

Khemara Battambang I Hotel	★★★
Steung Sanke Hotel	★★★
King Fy Hotel	★★★
Battambang Holiday Hotel	★★
President Battambang City Hotel	★

**Svay Reang Province**

Las Vegas Sun Hotel	★★★★
---------------------	------

**Kampot Province**

Thansur Bokor Highland Resort	★★★★
-------------------------------	------

**Pursat Province**

ពោធិសាត់សេនដូរី	★★
ឋានសួគ៌ថ្មី	★
វិមានទី៣	★

**Kampong Chhnang**

រដ្ឋសុខាញ្ញវ័យក	★
សុវណ្ណក្រមី	★

**Siem Reap Angkor**

Sofitel Phokeetra Royal Angkor Golf & Spa	★★★★★
Le Meridien Angkor	★★★★★
Sokha Angkor Resort	★★★★★
Angkor Palace Resort & Spa	★★★★★
Vitoria Angkor Resort & Spa	★★★★★
Raffles Grand Hotel D'Angkor	★★★★★
Borie Angkor Resort & Spa	★★★★★
La Residence	★★★★★
Sokhalay Angkor Hotel Resort & Spa	★★★★★
Angkor Era Hotel	★★★★★
Angkor Miracle Resort & Spa Hotel	★★★★★
Soma Devy Angkor Hotel & Spa	★★★★★
Tara Angkor Hotel	★★★★★
Empress Angkor Paradise Hotel	★★★★★
Allson Angkor Paradise Hotel	★★★★★
Allson Angkor Hotel	★★★★★
Dragon Royal Angkor Hotel	★★★★★
Kingdom Angkor Hotel	★★★★★
Majestic Angkor Hotel	★★★★★
Angkor Holiday Hotel	★★★★★
Ree Hotel	★★★★★
Royal Angkor Resort	★★★★★
Khemara Angkor Hotel	★★★★★
Angkor Riviera Hotel	★★★★★
Paradise Angkor Villa	★★★★★
Royal Bay Inn Angkor & Resort	★★★★★
Prince D' Angkor & Spa Hotel	★★★★★
Lotus Angkor Hotel	★★★★★
Amansara Hotel	★★★★★
Linratanak Angkor Hotel	★★★★★
Royal Empire Hotel	★★★★★
Apsara Angkor Hotel	★★★★★
Angkor Home Hotel	★★★★★
Princes Angkor	★★★★★
Vina Golf Angkor Hotel	★★★★★
Smiling Hotel	★★★★★
Ta Prom Hotel	★★★★
City River Hotel	★★★★
Apsara Holiday Hotel	★★★★
City Angkor Hotel	★★★★
F.C.C Angkor	★★★★
Goldianna Angkor	★★★★
Cozyna Angkor	★★★★
Encient Angkor	★★★★
Starry Angkor Hotel	★★★★
Parkland Hotel	★★★

## Tourism Supply Side: Tourism Services

## Number of travel agencies and tours operators from 1996 - 2012

Years	Offices			change (%)
	head	branch	Total	
1996	81	35	116	0
1997	78	37	115	-0.9%
1998	103	34	137	19.1%
1999	117	43	160	16.8%
2000	140	64	204	27.5%
2001	166	70	236	15.7%
2002	186	73	259	9.7%
2003	186	84	270	4.2%
2004	208	94	302	11.9%
2005	237	99	336	11.3%
2006	277	105	382	13.7%
2007	333	118	451	18.1%
2008	354	119	473	4.9%
2009	372	113	485	2.5%
2010	392	115	507	4.5%
2011	404	185	589	16.2%
2012	457	108	565	-4.1%

## Tourism Services Statistics in 2012

No.	Destinations	Hotels		Guesthouses		Tours Operators	Tours Guides	Restaurant	Massage	Karaoke	Casino
		Numbers	Rooms	Numbers	Rooms						
I	<b>Phnom Penh</b>	196	9,218	467	7,364	281	387	340	94	159	1
II	<b>Cultural Areas</b>	<b>165</b>	<b>11,349</b>	<b>275</b>	<b>4,068</b>	<b>150</b>	<b>3,689</b>	<b>252</b>	<b>55</b>	<b>57</b>	<b>3</b>
	1 Kampong Thom	5	167	15	182			28	2	11	
	2 Oddar Meanchey	4	193	23	412			28	4	12	3
	3 Preah Vihear	1	20	18	223		14	11		15	
	4 Siem Reap	155	10,969	219	3,251	150	3,675	185	49	19	
III	<b>Costal Areas</b>	<b>66</b>	<b>4,021</b>	<b>285</b>	<b>3,858</b>	<b>7</b>	<b>8</b>	<b>231</b>	<b>28</b>	<b>16</b>	<b>8</b>
	1 Kampong Som	49	2,330	142	2,034	6		66	13	8	7
	2 Kampot	7	762	65	762		8	46	12	4	
	3 Kep	3	152	44	546			68			
	4 Koh Kong	7	777	34	516	1		51	3	4	1
IV	<b>Eco-tourism</b>	<b>22</b>	<b>942</b>	<b>73</b>	<b>1,570</b>	<b>1</b>	<b>10</b>	<b>73</b>	<b>5</b>	<b>23</b>	<b>2</b>
	1 Kratie	10	346	14	213	1	10	28		7	2
	2 Mondul Kiri	2	109	18	514			9		7	
	3 Rattanak Kiri	6	236	21	326			16			
	4 Stung Treng	4	251	20	517			20	5	9	
V	<b>Battambang Areas</b>	<b>39</b>	<b>1,722</b>	<b>75</b>	<b>1,228</b>	<b>17</b>	<b>0</b>	<b>86</b>	<b>6</b>	<b>44</b>	<b>12</b>
	1 Banteay Meanchey	4	193	15	195	13		15	3	10	7
	2 Battambang	27	1,373	32	655	4		36	3	14	
	3 Pailin	4		10	144			18		9	5
	4 Pursat	4	156	18	234			17		11	
VI	<b>Others</b>	<b>34</b>	<b>1,361</b>	<b>166</b>	<b>2,212</b>	<b>1</b>	<b>1</b>	<b>174</b>	<b>7</b>	<b>149</b>	<b>23</b>
	1 Kampong Cham	12	783	59	804		1	18	4	23	4
	2 Kampong Chhnang	8	215	5	78			13		2	
	3 Kampong Speu	1	35	14	207			20		40	
	4 Kandal			9	120			9		6	4
	5 Prey Veng	10	200	15	116			32	1	33	2
	6 Svay Rieng	3	128	30	427	1		35	2	14	12
	7 Takeo			34	460			47		31	1
	<b>TOTAL</b>	<b>522</b>	<b>28,613</b>	<b>1,341</b>	<b>20,300</b>	<b>457</b>	<b>4,095</b>	<b>1,156</b>	<b>195</b>	<b>448</b>	<b>49</b>

## Airlines

## Domestic Airlines

No.	Airlines	Code	From / To	Flight	Time Travel	Address
1	Cambodia Angkor Air	K6	PNH - REP REP - PNH - KOS Ho Chi Minh Hanoi Bangkok	25/week 3/week 45mn PNH: 11/week REP: 35/week PNH: 4/week REP: 7/week PNH: 7/week REP: 14/week		PNH: #206A, Preah Norodom Blvd., Tel.: +855 23 6666788 Fax: +855 23 224164
2	Tonle Sap Air	K9		Charter		
3	Cambodia Airline					

## International Airlines

No.	Airlines	Code	From / To	Flight	Time Travel	Address
4	Thai Airways International	TG	Bangkok	PNH: 14/week	1h10mn	PNH: #8B, 294 Mao Tse Toung Blvd., Tel.: +855 23 214359-61 Fax: +855 23 214369
5	Vietnam Airlines	VN	Ho Chi Minh Hanoi Vientiane Luang Prabang Dalat	PNH: 21/week REP: 21/week PNH: 7/week REP: 35/week PNH: 14/week REP: 14/week REP: 7/week REP: 7/week		PNH: #41, Street 214 Tel.: +855 (0)23 215998 REP: #342, National Road 6, Tel.: +855 (0)63 964488
6	Silk Air	MI	Singapore	PNH: 13/week REP: 9/week	2h15mn 1h55mn	PNH: #219-B, Himawari Hotel Apartments Tel.: +855 23 426808
7	Malaysian Airlines	MH	Kuala Lumpur	PNH: 14/week REP: 3/week	1h50mn 1h05mn	PNH: #172-184, Monivong Blvd., Tel.: +855 23 426688
8	Dragon Air	KA	Hong Kong	PNH: 10/week REP: Charter	2h15mn	PNH: #168, Street 217, Tel.: +855 (0)23 424300
9	Eva Air	BR	Taiwan	PNH: 7/week	3h30mn	PNH: Suite 8A, #298, Mao Tse Toung Tel.: +855 (0)23 219911
10	Bangkok Airways	PG	Bangkok	PNH: 28/week REP: 42/week	1h10mn 1h	PNH: #61A, Street 214, Tel.: +855 23 722545 REP: #571, National Road 6 Tel.: +855 (0)63 720022
11	China Eastern	MU	Shanghai Kunming	PNH: 7/week PNH: 4/week	4h30mn	
12	China Southern Airlines	CZ	Goangzhou	PNH: 10/week REP: 7/week		PNH: #168, Street Monireth, Tel.: +855 (0)23 424588
13	Lao Airlines	QV	Vientiane Pakse Luang Prabang	REP: 4/week REP: 8/week REP: 4/week	2h30mn 2h35mn	PNH: #58B, Sihanouk Blvd., Tel.: +855 (0)23 222956 REP: #114, National Road 6 Tel.: +855 (0)63 963283
14	Air Asia Berhad	AK/FD	Kuala Lumpur	PNH: 14/week REP: 10/week	2h10mn 2h10mn	PNH: #66, Mao Tse Toung Blvd., Tel.: +855 (0)23 356011
15	Thai Air Asia	FD	Bangkok	PNH: 14/week		PNH: #32, Street 322, Norodom Blvd., Fax: +855 (0)23 222695
16	Jetstar Asia Airways	3K	Singapore	PNH: 7/week REP: 3/week	1h55mn 2h05mn	PNH: Tel: +855 (0)23 220909 REP: Tel: +855 (0)63 964388
17	China Airlines	CI	Taipei, Taiwan	PNH: 3/week	3h30mn	PNH: #32, Norodom Blvd., Tel.: +855 (0)223525
18	Korean Air	KE	Seoul-Inchoen Seoul-Inchoen Pusan	PNH: 7/week REP: 7/week REP: 2/week	5h	Room No. F3-R03, Intelligent Office, 254 Preah Monivong Blvd., Phnom Penh Tel.: +855 (0)23 224047-49 Fax: +855(0)23 224050
19	Asiana Airlines	OZ	Seoul	PNH: 7/week REP: 7/week	5h 10mn 5h30mn	Tel.: +855 (0)23 890441-442
20	Qatar Airways	QR	Doha	PNH: 7/week		
21	Air France	AF				
22	Air Myanmar	8M	Yangoon	PNH: 2/week		
23	Cebu Pacific	5J	Manila	REP: 4/week		
24	Condor Air	DE				
22	Japan Airlines	JL				
23	Thomson Airways	BY		REP: Charter		

**Published by:** Statistics and Tourism Information Department, Ministry of Tourism.

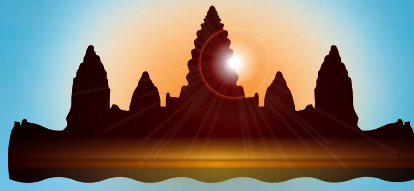
**Sources:** Immigration Department of the Ministry of Interior and Provincial Tourism Departments;

**Compiled by:**

1. Mr. KONG Sopheareak, Director, researcher and analyst
2. Mr. HORTH Vanny, Inbound and outbound tourism statistics
3. Mr. NUTH Nearak, Interview monitor
4. Mr. SUONG Mardy, Designer
5. Mr. SANG Sithikun, Domestic tourism statistics
6. Mr. CHAK Vorleak, Monitoring and data entries
7. Mr. LANG Daravuth, Data collector
8. Mr. SOK Sokha, Data collector
9. Mr. LANG Solina, Photographer







# CAMBODIA

*Kingdom of Wonder*



## CAMBODIA BAY

The Official Member of The Most Beautiful BAYS In The WORLD Club  
CLEAN CITY, CLEAN RESORT, GOOD SERVICE

[www.mot.gov.kh](http://www.mot.gov.kh) | [www.tourismcambodia.org](http://www.tourismcambodia.org)

SANG SAA PRIVATE ISLAND