



MINISTRY OF TOURISM

KINGDOM OF CAMBODIA
NATION RELIGION KING

TOURISM STATISTICS ANNUAL REPORT 2013



Southeast Asia
feel the warmth

POULO WAI ISLAND
Photo by: Suong Mardy

**ANNUAL REPORT
ON
TOURISM STATISTICS 2013**

**STATISTICS & TOURISM INFORMATION DEPARTMENT
MINISTRY OF TOURISM**

KINGDOM OF CAMBODIA

MESSAGE

Dr. THONG Khon
Minister of Tourism



Dear all readers,

The Ministry of Tourism (MOT) collates and publishes tourism statistic reports annually providing important information pertaining to the tourism industry. This annual report has been very well received over the years. The commitment of the Statistics and Tourism Information Department and research team generate invaluable statistics providing fundamental indicators for national and international investors and valuable materials beneficial to the private sectors and all stakeholders.

I am pleased to share that our tourism sector has been enjoying a consistent growth at a remarkable rates. The year 2013 saw a 17.5% increase over last year in international tourist arrivals to Cambodia with more than 4.21 million, of which Phnom Penh & a rounding received 1.97 million with an increase 29.7% and Siem Reap - Angkor received over 2.24 million with an increase of 8.4%. Also, the number of domestic tourist recorded an estimation of 8.55 million with an increase 3.6% over the previous year. Based on the going rate, we are optimistic that Cambodia will be able to attract over 7 million international tourist arrivals by year 2020. In order to achieve the above fast-growing trend, the Royal Government of Cambodia has further intensified the promotional campaign "**Cambodia: Kingdom of Wonder**" where all world heritages are gathered, namely Angkor Wat and Preah Vihear temple while at the same time pushed up the competitive movement of "**Clean City, Clean Resort, Good Service**", a potential tool to provide a standard quality tourism services for all visitors, making Cambodia a world-class destination.

It is expected that this Statistics Report 2013 will be a crucial instrument for either academic purposes or documentation for researchers, private sectors and all stakeholders as it may serve. Moreover, it also acts as a key indicator for national and international investors whom attempt to invest in tourism sector in Cambodia.

I sincerely thank you for your interest and wish you contentment.

A handwritten signature in blue ink, appearing to be 'Thong Khon', written over a horizontal line.

Dr. THONG Khon
Minister of Tourism

Definitions of Tourism Statistics

- **Statistics** are the data obtained by collecting, processing, compiling, analyzing, publishing and disseminating results, gathered from respondents through statistical collections or from administrative data sources.
- **Data** are information in the form of numbers.
- **Tourism statistics** are the designated official statistics produced by the Ministry of Tourism.
- **Tourism** refers to the activities of individuals travelling to and staying in places outside their usual environment for a specified period and not exceeding one consecutive year for leisure, recreation, business, and any other legal tourism purposes.
- **Tourist** refers to any persons who are Cambodian or non-Cambodian nationals travelling to other places outside their usual environment, staying at least overnight and not exceeding a specified period for leisure, recreation, business, and other legal tourism purposes; and not relevant to the purpose of permanent residence or any remunerated activities.
- **Domestic tourist** refers to any persons who are Cambodian citizens travelling within Cambodia and staying at least overnight and not exceeding a specified period for leisure, recreation, business and other legal tourism activities.
- **International tourist** refers to any foreign visitors to Cambodia who stay at least overnight but not more than a specified period for leisure, recreation, business and other legal tourism purposes; and not relevant to the purpose of permanent residence or any remunerated activities.
- **Internal international tourist** refers to any persons who are not Cambodian nationals, but have legal temporary residence in Cambodia, travelling to and staying overnight for leisure, recreation, business and other legal tourism purposes in the Kingdom of Cambodia.
- **Cambodia outbound tourist** refers to any Cambodian nationals who travel overseas (Cambodian nationals living abroad are excluded), staying at least overnight for leisure, recreation, business or other legal tourism purposes.
- **Same-day visitor** (Excursionist) refers to any individuals who are Cambodian or non-Cambodian nationals travelling to other places outside their usual environment for leisure, recreation, business, and other legal tourism purposes, but do not stay overnight there.
- **Tourism survey** is a scientific statistical collection of data from domestic or international tourism which statistics unit selects as samples.
- **Tourism manpower** refers to any persons who have been working in the tourism sector.
- **Tourism skilled labor** refers to any persons who have professionalism in tourism and have been working in the tourism sector.

Unofficial translation

CONTENTS

Minister Message	
Disclaimer	
General Information	
Definitions	
Tourism Highlight 1993 – 2013	
Quick overview of key trends in 2013	
Map of International Border Check-Point	

Unit I – Inbound and Outbound Tourism Statistics

International Tourist Arrivals to Cambodia by Months in 2008 - 2013	1
International Tourist Arrivals to Cambodia by Country of Residence in 2013.....	2 – 3
<i>(by all mean of transports)</i>	
International Tourist Arrivals to Cambodia by Purpose of Visit in 2013	4 – 5
<i>(by all mean of transports)</i>	
International Tourist Arrivals to Cambodia by Regions in 2013	6
<i>(by all mean of transports)</i>	
International Tourist Arrivals to Cambodia by Mode of Arrivals in 2012 - 2013	7
International Tourist Arrivals to Cambodia by Mode of Arrivals in 2008 - 2013 <i>(by all mean of transports)</i>	7
International Tourist Arrivals to Cambodia by Purpose of Visit by Air in 2013.....	8 – 9
<i>(by air only)</i>	
Top ten Generating Market from 2007 - 2013	10
International Tourist Arrivals to Cambodia by International Border Check Points in 2013	11 – 12
Cambodian Outbound Tourism by Int'l Border Check-points in 2013.....	13
International Outbound Tourism by Int'l Border Check Points in 2013	14
International Outbound Tourism by Country of Residence in 2013	15 – 16
Major Data in 1993 – 2013	17
Profile of international Tourist Arrivals to Cambodia in 2010 – 2013 (Inbound Tourism Survey 2013).....	18

Section I: Phnom Penh International Airport

International Tourist Arrivals to Phnom Penh International Airport by Months in 2004 - 2013.....	19
International Tourist Arrivals to Phnom Penh International Airport by Country of Residences in 2013	20 – 21
Top Ten Generating Markets in 2013, Tourist Arrivals by Ranks	21
International Tourist Arrivals to Phnom Penh International Airport by Regions in 2013	22
International Tourist Arrivals to Phnom Penh International Airport by Purpose of Visit in 2005 – 2013.....	23
Int'l Tourist Departures from Phnom Penh International Airport by Months in 2005 – 2013	24

Section II: Siem Reap International Airport

International Tourist Arrivals to Siem Reap Angkor by Months in 2005 - 2013.....	25
<i>(by all mean of transports)</i>	
International Tourist Arrivals to Siem Reap International Airport by Months in 2013.....	25
<i>(by air only)</i>	
International Tourist Arrivals to Siem Reap International Airport by Country of Residences in 2013	26 – 27
Top Ten Generating Markets in 2013, Tourist Arrivals by Ranks <i>(by air only)</i>	27
International Tourist arrivals to Siem Reap International Airport by Regions in 2013.....	28
International Tourist Arrivals to Siem Reap Angkor by Mode of Transport in 2013	29
International Tourist Arrivals to Siem Reap International Airport by Purpose of Visit in 2006 - 2013	30
Top Ten Generating Markets in 2013, Tourist Arrivals by Ranks <i>(by all mean of transports)</i>	30

Section III: International Border Check-points

International Tourist Arrivals to Cambodia by Land and Waterways in 2004 - 2013	31
Int'l Tourist Arrivals to Cambodia by Land and Waterways by Country of Residence in 2013.....	32 – 33
Top Ten Generating Markets in 2013, Tourist Arrivals by Ranks	33
International Tourist Arrivals to Cambodia by Land and Water Ways by Regions in 2013.....	34
International Tourist Arrivals to Cambodia by Land and Water Ways by Purpose of Visit in 2005 – 2013.....	34

Unit II – Domestic Tourism Statistics

Cambodian Visitor Arrivals to Provinces in 2010 – 2013	35
Foreigner Visitor Arrivals to Other Destinations in 2010 – 2013.....	35

Unit III – Tourism Supply Side

Tourism Supply Side: Accommodations

Number of Hotels & Guesthouses from 1997 – 2013	37
Tourism Services Statistics in 2013.....	37

Tourism Supply Side: Tourism services

Number of Travel agencies & Tour Operators from 1996 – 2013.....	38
Licensed Tour Guides in 2013.....	38

Airlines.....	39
---------------	----

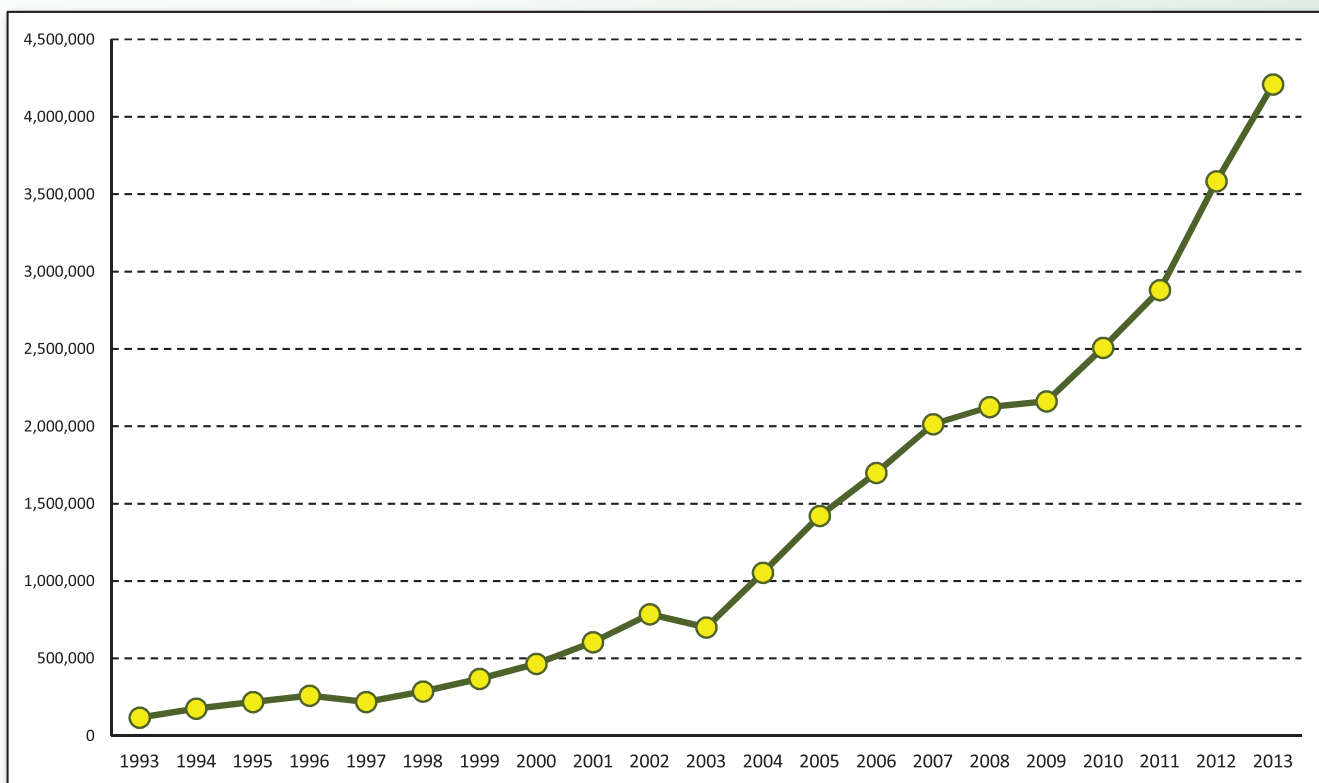
Published by.....	40
-------------------	----



Tourism Highlights

International Tourist Arrivals, Average Length of Stay, Hotels Occupancy & Tourism Receipts 1993 - 2013

Years	Int'l Tourist Arrivals		Average Length of Stay (Days)	Hotels Occupancy (%)	Tourism Receipts (Million US\$)
	Number	Change (%)			
1993	118,183	-	N/A	N/A	N/A
1994	176,617	49.4	N/A	N/A	N/A
1995	219,680	24.4	8.00	37.00	100
1996	260,489	18.6	7.50	40.00	118
1997	218,843	-16.0	6.40	30.00	103
1998	286,524	30.9	5.20	40.00	166
1999	367,743	28.3	5.50	44.00	190
2000	466,365	26.8	5.50	45.00	228
2001	604,919	29.7	5.50	48.00	304
2002	786,524	30.0	5.80	50.00	379
2003	701,014	-10.9	5.50	50.00	347
2004	1,055,202	50.5	6.30	52.00	578
2005	1,421,615	34.7	6.30	52.00	832
2006	1,700,041	19.6	6.50	54.79	1,049
2007	2,015,128	18.5	6.50	54.79	1,400
2008	2,125,465	5.5	6.65	62.68	1,595
2009	2,161,577	1.7	6.45	63.57	1,561
2010	2,508,289	16.0	6.45	65.74	1,786
2011	2,881,862	14.9	6.50	66.15	1,912
2012	3,584,307	24.4	6.30	68.49	2,210
2013	4,210,165	17.5	6.75	69.53	2,547



Quick overview of key trends

International tourism – 2013 result

- A total of twenty one international border check points involving two international airports, fifteen land international border check points, and three international ports have collected monthly on international tourist arrivals to Cambodia for 2013.
- International tourist arrivals to Cambodia witnessed 4.21 million with an increase of 17.5%, up from 3.58 million in 2012, which showed a sharp increase again after seven years of moderate percent. Asia and the Pacific saw the highest growth of all regions with 19.2%, while by sub-region, the arrivals from ASEAN member countries reached (+21.0%), Europe (+14.2%), America (+7.7%), Middle East (+3.0%) and Africa (4.9%).
- The number of international tourist arrivals increased dramatically with witnessing 431,807 tourists equating to 12.9% of total arrivals in December. January came nearer to December, considering 404,106 equating to 15.4% of total arrivals.
- In the first quarter of 2013, the international tourist arrivals to Cambodia accounted for 17.8% increase comparing to the same period in 2012, which was the peak period for Cambodia tourism. In the second quarter of 2013 saw an increase of 20.9% reported the highest increasing rate. The third quarter saw an increase of 17.5% while the fourth quarter witnessed increasing rate up to 14.5% after the first quarter. In particular, we can see that the typical length of stay for tourists was 6.75 days, and the hotel occupancy was 69.53%, up from 68.49%.
- **Tourism receipts:**
Consequently, Cambodia tourism receipts improved significantly at USD 2,547 million for 2013—representing a growth of 15.2% associating to 2012. The average expenditure of tourists was high at USD 120.76 per day.
- **By air:**
In 2013, the international tourist arrivals by air accounted for 2,017,658 tourists, equating to 47.9% of total arrivals, containing of 28.1% of air arrivals were listed at Siem Reap International Airport and other 19.9% were recorded at Phnom Penh International Airport. 17.2% reported an increase from the arrivals to Cambodia by air comparing to the year 2012.
- **By land and waterway:**
Overland arrivals to Cambodia accounted for 2,117,454 tourists in 2013, equating to 50.3% of total arrivals, with an increase of 18.6%. In concerns to the share of waterway arrivals, it accounted for 75,053, equating to 1.8% of total arrivals, with a decline of 1.9% compared to 2012. Interestingly, international tourist arrivals by land saw an enormous increase, which still plays an important role in growing Cambodia tourism, although waterway reported a decline.
- **Purpose of Visit:**
Leisure and holiday were the purpose of the international tourist arrivals visiting Cambodia in 2013, which accounted for 90.9% of total arrivals showed the central purpose, followed by 4.4% of VFR (Visiting Friends and Relatives), 4.4% of business, 0.2% of official travel and 0.2% for other reasons.

- **Visitor Profile:**

Surrounded by the 4.21 million international tourists to Cambodia in 2013, men accounted for 56.1% of total international arrivals. Remarkably, 83.8% of tourist arrivals to Cambodia as their first visit, and 16.2% travelers recorded as return tourists. Among international tourist arrivals to Cambodia, the following occupational categories were characterized: 7.9% of tourists were retired persons, 17.1% teachers, 3.5% government officials, 23.2% business persons, 30.2% employees, 11.2% students, and 6.2% others. 41.5% were free independent travelers (FIT) and 58.5% were group inclusive travelers (GIT) among all the international tourists arrival.

- **Market share:**

Vietnam 20.3%, China 11.0%, Republic of Korea 10.3%, Laos PDR 9.8%, Thailand 5.3%, Japan 4.9%, United States of America 4.4%, Australia 3.1%, Russian Federation 3.1%, and France 3.1% were the top-ten markets for Cambodia tourism in 2013.

- **Domestic tourism:**

In 2013, Cambodia received an overall domestic tourist of 8.52 million from all tourist destinations, presenting a total growth of 3.2% comparing to the year 2012. The number of domestic tourists of 2.19 million saw a 12.0% increase to Siem Reap Province; whereas Phnom Penh received 2.21 million tourists an increase 10.4%. The coastal areas (lying 440km in the provinces of Kampong Som, Kampot, Kep, and Koh Kong) received 2.08 million tourists, with an increase of rate up to 13.8% comparing to the previous year 2012. Furthermore, tourists travelled to the ecotourism destinations in Cambodia—the Northeast provinces including Kratie, Stung Treng, Rattanakiri, and Mondulakiri—received an overall number of tourists of 0.41 million, with an increase of 9.8%. Additionally, a potential region, Battambang Areas, which plays a significant role in agriculture of Cambodia included Battambang, Banteay Meanchey, Palin, and Pursat received a total domestic tourists of 0.69 million increase 15.5% comparing to the year 2012.

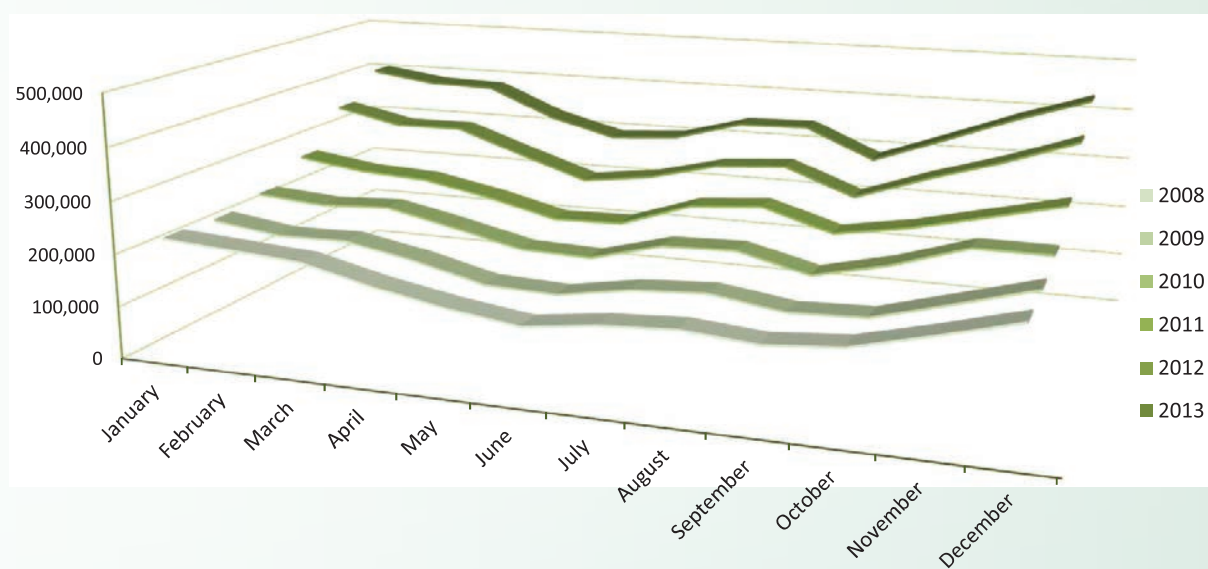


UNIT I

**INBOUND & OUTBOUND
TOURISM**

International Tourist Arrivals to Cambodia by Months in 2008 - 2013

Months	2008	2009	2010	2011	2012	2013	share (%) 2013*	change (%) 2013*/12
Q1	644,205	622,288	683,692	778,467	995,210	1,172,072	27.8	17.8
January	223,581	218,691	232,590	274,471	350,257	404,106	9.6	15.4
February	214,902	200,789	222,354	255,499	321,870	385,760	9.2	19.8
March	205,722	202,808	228,748	248,497	323,083	382,206	9.1	18.3
Q2	454,031	464,230	537,464	606,562	761,442	920,527	21.9	20.9
April	173,903	177,955	200,965	223,032	277,304	327,000	7.8	17.9
May	149,275	145,564	170,164	190,258	233,220	292,115	6.9	25.3
June	130,853	140,711	166,335	193,272	250,918	301,412	7.2	20.1
Q3	449,693	487,422	582,024	699,760	820,888	964,612	22.9	17.5
July	148,449	163,817	202,349	239,527	284,282	338,761	8.0	19.2
August	156,098	171,668	206,563	250,429	293,859	342,064	8.1	16.4
September	145,146	151,937	173,112	209,804	242,747	283,787	6.7	16.9
Q4	577,536	587,637	705,109	797,073	1,006,767	1,152,954	27.4	14.5
October	156,718	157,105	205,515	233,190	290,959	334,410	7.9	14.9
November	191,549	195,570	249,892	265,539	333,482	386,737	9.2	16.0
December	229,269	234,962	249,702	298,344	382,326	431,807	10.3	12.9
Total	2,125,465	2,161,577	2,508,289	2,881,862	3,584,307	4,210,165	100.0	17.5



International Tourist Arrivals to Cambodia by Country of Residence in 2013

(by all mean of transportations)

Regions Country of Residence	2013												Total	share (%) 2013*
	Jan	Feb	Mar	Apr	May	Jun	Jul	Aug	Sep	Oct	Nov	Dec		
GRAND TOTAL	404,106	385,760	382,206	327,000	292,115	301,412	338,761	342,064	283,787	334,410	386,737	431,807	4,210,165	100.0
Asia and the Pacific	286,380	278,021	280,615	256,171	237,367	251,324	268,103	273,540	239,404	261,970	278,459	320,538	3,231,892	76.8
ASEAN	126,002	130,268	150,544	155,155	152,547	165,266	167,454	164,470	141,755	156,314	155,516	166,216	1,831,507	43.5
Brunei Darussalam	37	54	99	35	40	47	81	58	36	57	96	174	814	0.0
Indonesia	2,262	1,748	2,255	2,269	2,360	2,411	2,290	2,867	2,048	2,411	2,474	2,804	28,199	0.7
Lao PDR	28,808	29,984	33,847	21,351	32,350	37,241	38,465	41,200	39,163	36,431	37,386	38,305	414,531	9.8
Malaysia	9,281	8,358	11,138	9,343	11,579	10,958	9,456	11,067	10,162	11,974	12,971	14,417	130,704	3.1
Myanmar	329	360	320	742	390	512	432	347	343	362	525	427	5,089	0.1
Philippines	8,062	8,562	9,485	10,317	11,049	10,525	9,648	10,160	9,367	10,776	10,850	10,198	118,999	2.8
Singapore	3,856	3,488	4,568	3,656	5,015	5,794	3,870	4,067	4,430	4,715	6,589	7,760	57,808	1.4
Thailand	18,693	18,964	20,152	20,390	17,808	15,075	18,827	18,042	16,489	22,129	14,814	19,876	221,259	5.3
Vietnam	54,674	58,750	68,680	87,052	71,956	82,703	84,385	76,662	59,717	67,459	69,811	72,255	854,104	20.3
Eastern Asia	138,958	133,634	115,410	86,996	71,951	72,394	86,340	97,113	82,043	89,729	105,341	131,095	1,211,004	28.8
China (RPC)	39,961	55,482	42,340	36,371	28,273	28,570	36,509	38,043	34,345	36,676	40,691	45,862	463,123	11.0
Hong Kong SAR	597	549	1,193	393	440	412	322	400	449	990	1,329	1,502	8,576	0.2
Japan	18,984	19,276	21,505	13,290	11,425	11,258	13,233	23,154	18,685	14,549	19,474	22,099	206,932	4.9
Korea (ROK)	70,770	49,330	41,971	28,844	24,339	24,331	28,731	28,181	21,441	29,676	34,822	52,573	435,009	10.3
Mongolia	42	45	51	22	35	15	32	13	19	62	15	21	372	0.0
Taiwan, China	8,604	8,952	8,350	8,076	7,439	7,808	7,513	7,322	7,104	7,776	9,010	9,038	96,992	2.3
Southern Asia	2,291	2,160	2,264	2,140	2,443	2,577	2,257	2,652	2,376	2,886	2,456	3,408	29,910	0.7
Afghanistan	20	17	21	46	41	41	28	14	9	5	24	7	273	0.0
Bangladesh	128	135	161	195	194	101	112	149	131	123	105	77	1,611	0.0
Bhutan	10	11	11	7	1	8	5	12	11	3	5	17	101	0.0
India	1,819	1,730	1,728	1,531	1,833	2,069	1,837	2,067	1,819	2,337	1,928	2,912	23,610	0.6
Nepal	132	89	120	108	120	158	98	113	115	157	138	127	1,475	0.0
Pakistan	93	59	76	102	104	89	81	105	148	95	111	117	1,180	0.0
Sri Lanka	89	119	147	151	150	111	96	192	143	166	145	151	1,660	0.0
Western Asia	486	456	366	209	118	130	215	176	124	190	283	372	3,125	0.1
Kazakhstan	437	406	290	147	79	87	172	131	92	146	231	293	2,511	0.1
Uzbekistan	49	50	76	62	39	43	43	45	32	44	52	79	614	0.0
Oceania	18,336	10,854	11,588	11,367	10,113	10,588	11,692	8,942	12,922	12,543	14,548	19,219	152,712	3.6
Australia	16,122	9,740	10,198	9,695	8,721	9,065	9,977	7,635	11,400	10,887	12,426	16,162	132,028	3.1
Fiji	9	8	9	5	9	14	10	5	6	12	8	12	107	0.0
New Zealand	2,205	1,106	1,381	1,667	1,383	1,509	1,705	1,302	1,516	1,644	2,114	3,045	20,577	0.5
Other Asia & the Pacific	307	649	443	304	195	369	145	187	184	308	315	228	3,634	0.1
Europe	84,830	77,610	72,649	49,118	35,503	31,287	50,417	53,146	30,493	51,462	80,939	80,703	698,157	16.6
Northern Europe	20,732	20,108	18,014	12,776	10,291	10,330	15,107	12,197	8,430	13,319	18,217	18,542	178,063	4.2
Denmark	1,395	1,519	1,211	781	581	432	1,044	471	371	606	968	1,106	10,485	0.2
Finland	1,242	989	780	378	310	219	264	176	421	378	538	1,036	6,731	0.2
Iceland	88	50	56	56	34	145	58	143	53	31	38	36	788	0.0
Ireland	973	894	794	634	615	752	1,318	786	544	861	1,121	953	10,245	0.2
Norway	1,282	1,245	1,301	564	341	511	850	367	381	634	985	1,021	9,482	0.2
Sweden	3,188	2,584	1,804	1,148	598	583	797	425	420	852	1,525	2,489	16,413	0.4
United Kingdom	12,564	12,827	12,068	9,215	7,812	7,688	10,776	9,829	6,240	9,957	13,042	11,901	123,919	2.9
Western Europe	33,775	32,585	30,951	20,605	14,278	11,778	22,852	22,673	11,519	19,598	33,688	33,132	287,434	6.8
Austria	1,540	1,338	992	490	304	236	537	609	348	543	1,101	1,053	9,091	0.2
Belgium	1,545	1,573	1,527	1,197	679	710	2,141	1,123	701	1,143	1,891	1,941	16,171	0.4
France	14,071	14,196	13,583	10,186	6,700	5,975	11,487	12,641	4,736	8,642	14,685	14,584	131,486	3.1
Germany	10,346	10,262	10,165	5,510	3,930	2,689	3,811	4,734	3,818	5,980	10,595	9,725	81,565	1.9
Luxembourg	39	67	86	41	19	16	38	62	15	35	71	82	571	0.0
Monaco	8	4	4	19	6	6	16	12	13	13	2	0	103	0.0
Netherlands	3,224	2,740	2,544	1,838	1,633	1,477	3,416	2,450	1,186	1,883	2,672	3,013	28,076	0.7
Switzerland	3,002	2,405	2,050	1,324	1,007	669	1,406	1,042	702	1,359	2,671	2,734	20,371	0.5
Eastern Europe	23,952	19,157	18,113	12,018	8,168	6,147	7,044	6,880	6,582	13,011	21,782	22,598	165,452	3.9
Bulgaria	124	78	101	73	43	59	21	49	36	72	172	133	961	0.0
Czech Republic	673	755	651	329	149	128	208	186	137	308	738	583	4,845	0.1
Estonia	225	204	167	81	35	38	25	49	49	94	167	232	1,366	0.0
Hungary	508	539	398	152	114	92	111	104	85	201	353	290	2,947	0.1
Lithuania	235	271	281	80	55	40	41	34	39	104	269	159	1,608	0.0
Poland	1,700	1,814	1,462	823	525	323	463	451	389	870	2,447	1,240	12,507	0.3
Romania	173	194	155	82	59	49	66	72	75	166	191	244	1,526	0.0
Russian Federation	18,865	14,312	14,101	9,753	6,783	5,126	5,814	5,664	5,521	10,611	16,457	18,668	131,675	3.1
Slovakia	292	275	217	241	178	115	108	89	53	108	263	159	2,098	0.0
Ukraine	1,157	715	580	404	227	177	187	182	198	477	725	890	5,919	0.1

International Tourist Arrivals to Cambodia by Country of Residence in 2013

(by all mean of transportations)

Regions Country of Residence	2013												Total	share (%) 2013*
	Jan	Feb	Mar	Apr	May	Jun	Jul	Aug	Sep	Oct	Nov	Dec		
GRAND TOTAL	404,106	385,760	382,206	327,000	292,115	301,412	338,761	342,064	283,787	334,410	386,737	431,807	4,210,165	100.0
Southern Europe	6,104	5,168	5,215	3,461	2,599	2,724	5,309	11,250	3,815	5,263	6,974	6,211	64,093	1.5
Croatia	130	87	87	42	35	29	33	42	24	41	105	143	798	0.0
Greece	110	87	137	113	93	49	46	181	27	56	73	163	1,135	0.0
Italy	3,157	2,657	2,252	1,447	967	891	1,497	4,254	859	1,315	2,978	2,922	25,196	0.6
Portugal	322	308	426	359	170	210	264	537	205	330	522	434	4,087	0.1
Serbia	99	71	41	53	37	22	28	62	22	37	68	73	613	0.0
Slovenia	292	132	66	55	39	65	84	41	35	149	82	181	1,221	0.0
Spain	1,451	1,317	1,724	1,131	1,041	1,242	3,124	5,826	2,447	2,385	2,815	1,869	26,372	0.6
Turkey	543	509	482	261	217	216	233	307	196	950	331	426	4,671	0.1
Other Europe	267	592	356	258	167	308	105	146	147	271	278	220	3,115	0.1
Americas	30,912	28,205	27,189	20,595	18,217	17,608	19,232	14,222	12,655	19,858	25,983	28,499	263,175	6.3
Argentina	1,183	744	737	592	404	232	220	229	253	308	395	466	5,763	0.1
Brazil	1,026	735	577	600	471	307	374	325	308	627	662	848	6,860	0.2
Canada	6,419	6,517	5,717	3,621	3,469	2,693	3,403	2,420	1,905	3,489	5,888	5,326	50,867	1.2
Chile	395	731	465	207	304	258	309	247	227	274	258	294	3,969	0.1
Colombia	228	76	131	129	106	170	162	116	141	160	146	238	1,803	0.0
Costa Rica	64	14	10	34	29	17	27	13	11	28	38	20	305	0.0
Ecuador	28	31	22	12	4	24	23	20	13	20	28	58	283	0.0
Mexico	274	273	459	403	341	308	639	261	350	540	479	639	4,966	0.1
Peru	32	35	79	75	51	59	44	45	68	79	51	59	677	0.0
United States	21,040	18,808	18,747	14,655	12,616	13,276	13,929	10,423	9,220	14,074	17,794	20,382	184,964	4.4
Uruguay	41	32	18	112	279	25	14	5	27	16	35	14	618	0.0
Other Americas	182	209	227	155	143	239	88	118	132	243	209	155	2,100	0.0
Africa	611	519	500	470	383	497	397	368	370	432	454	901	5,902	0.1
Cameroon	18	13	11	11	7	13	13	8	13	9	13	18	147	0.0
Congo	4	4	4	4	2	11	6	2	4	8	3	6	58	0.0
Ghana	30	10	3	50	7	5	1	12	2	5	3	6	134	0.0
Kenya	15	28	32	15	30	30	29	14	15	15	27	48	298	0.0
Liberia	4	2	6	10	1	2	1	13	0	3	2	8	52	0.0
Nigeria	61	48	39	47	59	63	49	51	54	58	45	31	605	0.0
Sudan	6	5	1	3	3	9	5	2	2	13	7	4	60	0.0
South Africa	402	374	351	299	216	292	266	240	261	293	313	736	4,043	0.1
Uganda	9	3	7	4	3	12	4	1	1	2	15	5	66	0.0
Other Africa	62	32	46	27	55	60	23	25	18	26	26	39	439	0.0
Middle East	1,373	1,405	1,253	646	645	696	612	788	865	688	902	1,166	11,039	0.3
Egypt	21	20	19	23	44	31	26	17	28	47	25	28	329	0.0
Iran	60	69	73	50	58	38	54	58	48	35	56	56	655	0.0
Iraq	6	8	23	9	21	15	11	13	5	6	11	6	134	0.0
Israel	1,090	1,106	946	419	318	280	421	473	637	410	656	928	7,684	0.2
Kuwait	103	129	73	60	92	161	39	106	84	121	83	70	1,121	0.0
Oman	12	14	14	16	16	51	14	19	10	8	14	11	199	0.0
Palestine	7	3	9	9	21	10	4	17	3	4	3	4	94	0.0
Qatar	8	6	36	1	4	22	2	3	6	3	0	4	95	0.0
Saudi Arabia	9	22	10	16	18	19	3	8	10	6	17	12	150	0.0
United Arab Emirates	11	3	12	13	9	16	7	45	7	7	8	8	146	0.0
Yemen	6	9	9	14	16	18	10	8	14	19	8	13	144	0.0
Other Middle East	40	16	29	16	28	35	21	21	13	22	21	26	288	0.0

International Tourist Arrivals to Cambodia by Purpose of Visit in 2013

(by all mean of transportations)

Regions Country of Residence	2012		2013			share		change	
		Purpose of Visit			Total	Female	share (%)	change	
		Holiday	Business	Other				2013*	2013*/12
GRAND TOTAL	3,584,307	3,991,899	185,584	32,682	4,210,165	1,981,795	100.0		17.5
Asia and the Pacific	2,712,316	3,064,021	148,913	18,958	3,231,892	1,552,416	76.8		19.2
ASEAN (South-East Asia)	1,514,267	1,782,194	40,331	8,982	1,831,507	907,875	43.5		21.0
Brunei Darussalam	964	751	14	49	814	349	0.0		-15.6
Indonesia	22,544	23,921	4,030	248	28,199	8,627	0.7		25.1
Lao PDR	254,022	413,957	126	448	414,531	267,766	9.8		63.2
Malaysia	116,764	122,365	8,115	224	130,704	46,707	3.1		11.9
Myanmar	4,744	4,241	567	281	5,089	2,067	0.1		7.3
Philippines	97,487	111,358	6,887	754	118,999	70,533	2.8		22.1
Singapore	53,184	54,963	2,665	180	57,808	20,905	1.4		8.7
Thailand	201,422	207,346	9,742	4,171	221,259	94,442	5.3		9.8
Vietnam	763,136	843,292	8,185	2,627	854,104	396,479	20.3		11.9
North-East Asia	1,026,152	1,107,570	96,630	6,804	1,211,004	566,132	28.8		18.0
China (RPC)	333,894	404,245	55,975	2,903	463,123	221,249	11.0		38.7
Hong Kong SAR	8,282	8,366	198	12	8,576	4,398	0.2		3.5
Japan	179,327	193,141	11,784	2,007	206,932	87,717	4.9		15.4
Korea (ROK)	411,491	416,632	16,656	1,721	435,009	211,555	10.3		5.7
Mongolia	347	322	27	23	372	173	0.0		7.2
Taiwan, China	92,811	84,864	11,990	138	96,992	41,040	2.3		4.5
Southern Asia	24,704	24,763	4,145	1,002	29,910	7,978	0.7		21.1
Afghanistan	154	242	3	28	273	23	0.0		77.3
Bangladesh	1,367	1,243	228	140	1,611	199	0.0		17.8
Bhutan	134	65	13	23	101	34	0.0		-24.6
India	18,999	20,267	2,823	520	23,610	6,782	0.6		24.3
Nepal	1,478	1,074	264	137	1,475	353	0.0		-0.2
Pakistan	1,168	689	413	78	1,180	183	0.0		1.0
Sri Lanka	1,404	1,183	401	76	1,660	404	0.0		18.2
Western Asia	2,420	2,843	256	26	3,125	1,700	0.1		29.1
Kazakhstan	1,842	2,286	207	18	2,511	1,340	0.1		36.3
Uzbekistan	578	557	49	8	614	360	0.0		6.2
Oceania	136,879	143,601	7,215	1,896	152,712	67,150	3.6		11.6
Australia	117,729	124,246	6,111	1,671	132,028	58,345	3.1		12.1
Fiji	106	82	15	10	107	38	0.0		0.9
New Zealand	19,044	19,273	1,089	215	20,577	8,767	0.5		8.0
Other Asia & the Pacific	7,894	3,050	336	248	3,634	1,581	0.1		-54.0
Europe	611,359	666,922	23,523	7,712	698,157	307,271	16.6		14.2
Northern Europe	160,447	169,064	7,206	1,793	178,063	70,957	4.2		11.0
Denmark	10,013	10,039	318	128	10,485	4,281	0.2		4.7
Finland	6,343	6,375	246	110	6,731	2,506	0.2		6.1
Iceland	578	725	49	14	788	322	0.0		36.3
Ireland	8,865	9,764	386	95	10,245	4,362	0.2		15.6
Norway	8,251	9,086	288	108	9,482	3,869	0.2		14.9
Sweden	16,215	15,663	525	225	16,413	6,255	0.4		1.2
United Kingdom	110,182	117,412	5,394	1,113	123,919	49,362	2.9		12.5
Western Europe	259,499	270,793	11,954	4,687	287,434	120,727	6.8		10.8
Austria	8,148	8,782	211	98	9,091	3,739	0.2		11.6
Belgium	14,762	15,188	732	251	16,171	6,491	0.4		9.5
France	121,175	121,318	7,390	2,778	131,486	56,156	3.1		8.5
Germany	72,537	78,641	2,013	911	81,565	33,929	1.9		12.4
Luxembourg	474	551	14	6	571	239	0.0		20.5
Monaco	55	96	6	1	103	55	0.0		87.3
Netherlands	24,559	26,777	936	363	28,076	11,662	0.7		14.3
Switzerland	17,789	19,440	652	279	20,371	8,456	0.5		14.5
Central / Eastern Europe	127,171	162,735	2,240	477	165,452	87,267	3.9		30.1
Bulgaria	696	929	16	16	961	475	0.0		38.1
Czech Republic	4,064	4,672	121	52	4,845	2,018	0.1		19.2
Estonia	1,022	1,299	40	27	1,366	557	0.0		33.7
Hungary	2,537	2,886	36	25	2,947	1,291	0.1		16.2
Lithuania	1,089	1,594	12	2	1,608	778	0.0		47.7
Poland	9,994	12,357	89	61	12,507	6,235	0.3		25.1
Romania	1,327	1,444	71	11	1,526	778	0.0		15.0
Russian Federation	99,750	129,825	1,627	223	131,675	71,204	3.1		32.0
Slovakia	1,693	1,960	98	40	2,098	860	0.0		23.9
Ukraine	4,999	5,769	130	20	5,919	3,071	0.1		18.4

International Tourist Arrivals to Cambodia by Purpose of Visit in 2013

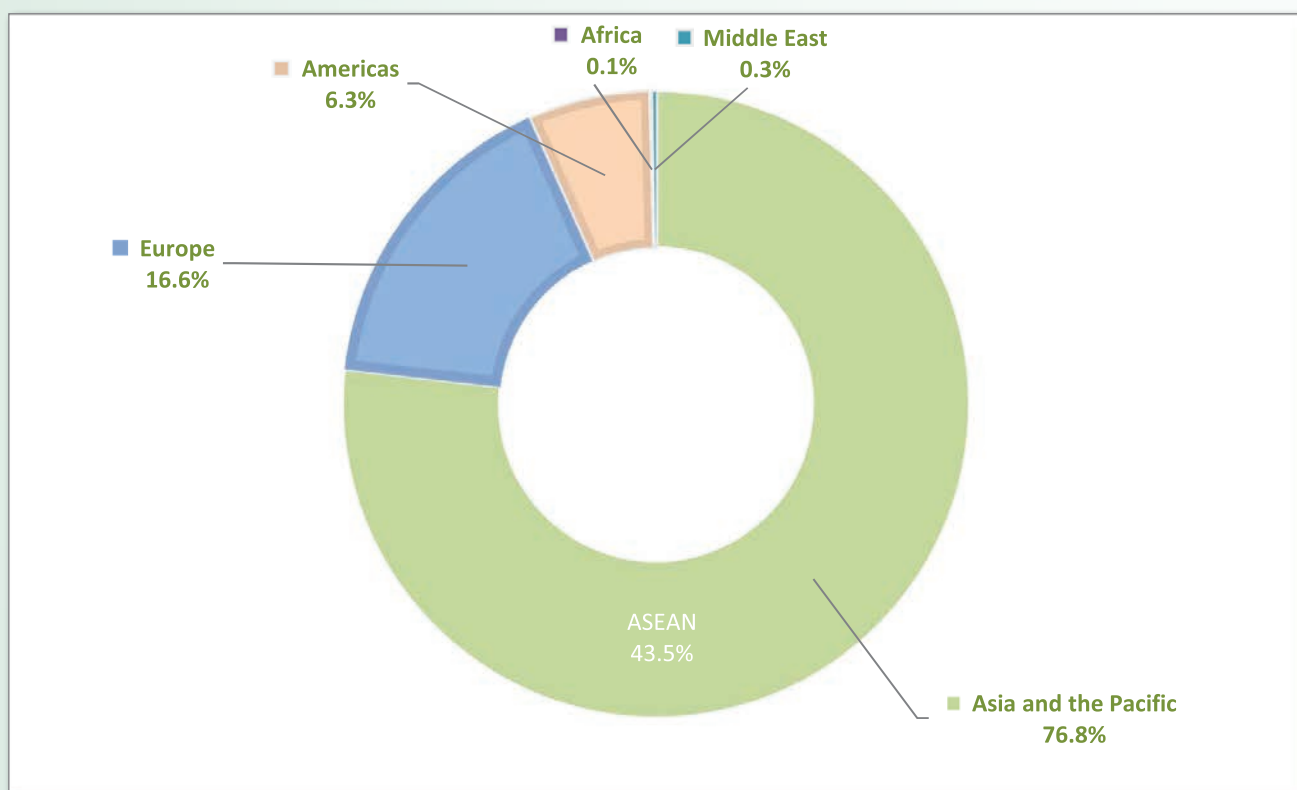
(by all mean of transportations)

Regions Country of Residence	2012		2013			share		change	
			Purpose of Visit			Total	Female	(%)	(%)
			Holiday	Business	Other			2013*	2013*/12
GRAND TOTAL	3,584,307	3,991,899	185,584	32,682	4,210,165	1,981,795	100.0	17.5	
Southern Europe	57,571	61,617	1,894	582	64,093	26,977	1.5	11.3	
Croatia	705	762	26	10	798	363	0.0	13.2	
Greece	1,073	1,085	39	11	1,135	394	0.0	5.8	
Italy	22,625	24,141	787	268	25,196	9,725	0.6	11.4	
Portugal	3,061	3,926	139	22	4,087	1,950	0.1	33.5	
Serbia	411	563	36	14	613	325	0.0	49.1	
Slovenia	939	1,152	61	8	1,221	514	0.0	30.0	
Spain	25,349	25,737	442	193	26,372	12,146	0.6	4.0	
Turkey	3,408	4,251	364	56	4,671	1,560	0.1	37.1	
Other Europe	6,671	2,713	229	173	3,115	1,343	0.1	-53.3	
Americas	244,291	245,446	12,183	5,546	263,175	116,157	6.3	7.7	
Argentina	4,500	5,671	40	52	5,763	2,861	0.1	28.1	
Brazil	5,110	6,722	62	76	6,860	3,244	0.2	34.2	
Canada	47,829	48,006	2,305	556	50,867	22,571	1.2	6.4	
Chile	2,973	3,873	72	24	3,969	2,005	0.1	33.5	
Colombia	1,497	1,731	40	32	1,803	896	0.0	20.4	
Costa Rica	245	288	9	8	305	146	0.0	24.5	
Ecuador	191	253	15	15	283	135	0.0	48.2	
Mexico	4,164	4,885	49	32	4,966	2,461	0.1	19.3	
Peru	576	621	37	19	677	338	0.0	17.5	
United States	173,076	171,000	9,373	4,591	184,964	80,219	4.4	6.9	
Uruguay	504	600	10	8	618	290	0.0	22.6	
Other Americas	3,626	1,796	171	133	2,100	991	0.0	-42.1	
Africa	5,626	5,053	565	284	5,902	2,310	0.1	4.9	
Cameroon	225	119	7	21	147	18	0.0	-34.7	
Congo	66	47	3	8	58	14	0.0	-12.1	
Ghana	149	112	8	14	134	45	0.0	-10.1	
Kenya	266	234	19	45	298	143	0.0	12.0	
Liberia	94	46	0	6	52	11	0.0	-44.7	
Nigeria	570	309	256	40	605	60	0.0	6.1	
Sudan	52	48	8	4	60	6	0.0	15.4	
South Africa	3,530	3,746	215	82	4,043	1,793	0.1	14.5	
Uganda	80	50	3	13	66	23	0.0	-17.5	
Other Africa	594	342	46	51	439	197	0.0	-26.1	
Middle East	10,715	10,457	400	182	11,039	3,641	0.3	3.0	
Egypt	219	257	58	14	329	64	0.0	50.2	
Iran	646	623	27	5	655	159	0.0	1.4	
Iraq	83	123	4	7	134	39	0.0	61.4	
Israel	7,921	7,362	274	48	7,684	3,047	0.2	-3.0	
Kuwait	712	1,089	2	30	1,121	48	0.0	57.4	
Oman	150	197	0	2	199	25	0.0	32.7	
Palestine	51	86	2	6	94	15	0.0	84.3	
Qatar	70	85	0	10	95	38	0.0	35.7	
Saudi Arabia	87	139	2	9	150	23	0.0	72.4	
United Arab Emirates	243	144	0	2	146	18	0.0	-39.9	
Yemen	156	122	8	14	144	27	0.0	-7.7	
Other Middle East	377	230	23	35	288	138	0.0	-23.6	

International Tourist Arrivals to Cambodia by Regions in 2013

(by all means of transportation)

Months	Asia & the Pacific		Europe	Americas	Africa	Middle East	Total
		ASEAN					
Q1	845,016	406,814	235,089	86,306	1,630	4,031	1,172,072
January	286,380	126,002	84,830	30,912	611	1,373	404,106
February	278,021	130,268	77,610	28,205	519	1,405	385,760
March	280,615	150,544	72,649	27,189	500	1,253	382,206
Q2	744,862	472,968	115,908	56,420	1,350	1,987	920,527
April	256,171	155,155	49,118	20,595	470	646	327,000
May	237,367	152,547	35,503	18,217	383	645	292,115
June	251,324	165,266	31,287	17,608	497	696	301,412
Q3	781,047	473,679	134,056	46,109	1,135	2,265	964,612
July	268,103	167,454	50,417	19,232	397	612	338,761
August	273,540	164,470	53,146	14,222	368	788	342,064
September	239,404	141,755	30,493	12,655	370	865	283,787
Q4	860,967	478,046	213,104	74,340	1,787	2,756	1,152,954
October	261,970	156,314	51,462	19,858	432	688	334,410
November	278,459	155,516	80,939	25,983	454	902	386,737
December	320,538	166,216	80,703	28,499	901	1,166	431,807
Total	3,231,892	1,831,507	698,157	263,175	5,902	11,039	4,210,165
share (%)	76.8	43.5	16.6	6.3	0.1	0.3	100.0



International Tourist Arrivals to Cambodia by Mode of Arrivals in 2012 - 2013

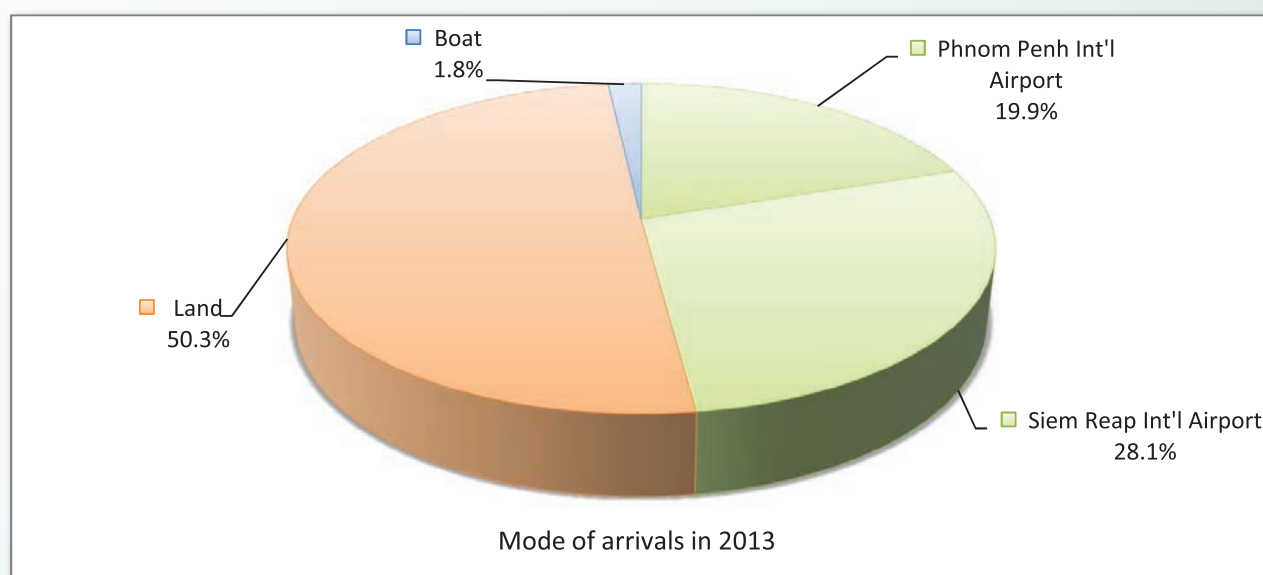
(by all means of transportation)

Months	2012				2013				change (%) 13*/12
	Air	Land	Boat	Total	Air	Land	Boat	Total	
Q1	513,756	445,420	36,034	995,210	611,160	535,718	25,194	1,172,072	17.8
January	185,499	153,385	11,373	350,257	215,210	179,273	9,623	404,106	15.4
February	168,148	142,295	11,427	321,870	203,453	174,036	8,271	385,760	19.8
March	160,109	149,740	13,234	323,083	192,497	182,409	7,300	382,206	18.3
Q2	337,123	414,480	9,839	761,442	398,055	510,162	12,310	920,527	20.9
April	126,282	147,325	3,697	277,304	145,348	175,812	5,840	327,000	17.9
May	104,398	126,637	2,185	233,220	126,255	161,411	4,449	292,115	25.3
June	106,443	140,518	3,957	250,918	126,452	172,939	2,021	301,412	20.1
Q3	370,541	439,904	10,443	820,888	428,012	522,759	13,841	964,612	17.5
July	126,405	154,519	3,358	284,282	144,649	190,235	3,877	338,761	19.2
August	135,960	153,587	4,312	293,859	153,905	183,315	4,844	342,064	16.4
September	108,176	131,798	2,773	242,747	129,458	149,209	5,120	283,787	16.9
Q4	500,663	485,922	20,182	1,006,767	580,431	548,815	23,708	1,152,954	14.5
October	140,908	146,167	3,884	290,959	156,060	171,198	7,152	334,410	14.9
November	168,833	156,776	7,873	333,482	197,409	181,464	7,864	386,737	16.0
December	190,922	182,979	8,425	382,326	226,962	196,153	8,692	431,807	12.9
Total	1,722,083	1,785,726	76,498	3,584,307	2,017,658	2,117,454	75,053	4,210,165	17.5

International Tourist Arrivals to Cambodia by Mode of Arrivals in 2008 - 2013

(by all means of transportation)

Mode of arrivals	Int'l tourist arrivals						share (%) 2013*	change (%) 13*/12
	2008	2009	2010	2011	2012	2013		
Air	1,239,407	1,111,729	1,304,300	1,480,407	1,722,083	2,017,658	47.9	17.2
Phnom Penh Int'l Airport	570,903	527,745	591,628	645,235	716,584	836,377	19.9	16.7
Siem Reap Int'l Airport	668,504	583,984	712,672	835,172	1,005,499	1,181,281	28.1	17.5
Land & waterways	886,058	1,049,848	1,203,988	1,401,455	1,862,224	2,192,507	52.1	17.7
Land	814,169	971,539	1,125,974	1,320,311	1,785,726	2,117,454	50.3	18.6
Boat	71,889	78,309	78,014	81,144	76,498	75,053	1.8	-1.9
Total	2,125,465	2,161,577	2,508,288	2,881,862	3,584,307	4,210,165	100.0	17.5



International Tourist Arrivals to Cambodia by Purpose of Visit by Air in 2013

(by Air only)

Regions Country of Residence	2013			Total	Female	share (%) 2013*
	Purpose of Visit					
	Holiday	Business	Other			
GRAND TOTAL	1,863,693	130,158	23,807	2,017,658	914,330	100.0
Asia and the Pacific	1,375,347	102,874	12,085	1,490,306	685,528	73.9
ASEAN	260,367	19,061	3,578	283,006	110,395	14.0
Brunei Darussalam	622	14	48	684	283	0.0
Indonesia	10,273	1,047	211	11,531	4,391	0.6
Lao PDR	3,106	83	216	3,405	1,346	0.2
Malaysia	105,993	6,841	197	113,031	42,795	5.6
Myanmar	2,536	387	257	3,180	1,266	0.2
Philippines	26,333	2,116	377	28,826	14,337	1.4
Singapore	47,983	2,427	168	50,578	19,696	2.5
Thailand	41,376	4,811	1,504	47,691	16,662	2.4
Vietnam	22,145	1,335	600	24,080	9,619	1.2
Eastern Asia	994,488	74,896	5,733	1,075,117	520,587	53.3
China (RPC)	368,391	46,684	2,691	417,766	202,855	20.7
Hong Kong SAR	3,493	10	1	3,504	1,931	0.2
Japan	170,747	9,882	1,798	182,427	82,132	9.0
Korea (ROK)	373,635	10,564	1,090	385,289	194,475	19.1
Mongolia	211	20	17	248	114	0.0
Taiwan, China	78,011	7,736	136	85,883	39,080	4.3
Southern Asia	18,650	2,567	910	22,127	6,458	1.1
Afghanistan	227	1	28	256	23	0.0
Bangladesh	1,116	195	140	1,451	188	0.1
Bhutan	40	4	18	62	19	0.0
India	15,111	1,555	473	17,139	5,468	0.8
Nepal	631	140	101	872	227	0.0
Pakistan	495	326	74	895	167	0.0
Srilanka	1,030	346	76	1,452	366	0.1
Western Asia	699	180	26	905	426	0.0
Kazakhstan	573	156	18	747	362	0.0
Uzbekistan	126	24	8	158	64	0.0
Oceania	99,400	5,979	1,698	107,077	46,950	5.3
Australia	86,540	5,054	1,507	93,101	41,068	4.6
Fiji	68	13	9	90	28	0.0
New Zealand	12,792	912	182	13,886	5,854	0.7
Other Asia & the Pacific	1,743	191	140	2,074	712	0.1
Europe	311,760	17,204	6,698	335,662	143,711	16.6
Northern Europe	83,397	5,492	1,640	90,529	36,621	4.5
Denmark	4,034	226	123	4,383	1,765	0.2
Finland	2,767	192	104	3,063	1,181	0.2
Iceland	391	46	12	449	168	0.0
Ireland	4,203	278	88	4,569	1,884	0.2
Norway	4,421	192	105	4,718	1,915	0.2
Sweden	6,944	406	206	7,556	3,008	0.4
United Kingdom	60,637	4,152	1,002	65,791	26,700	3.3
Western Europe	160,210	9,131	4,081	173,422	74,712	8.6
Austria	4,369	155	75	4,599	2,004	0.2
Belgium	8,297	504	234	9,035	3,618	0.4
France	82,088	5,793	2,463	90,344	39,194	4.5
Germany	42,550	1,463	809	44,822	19,737	2.2
Luxembourg	387	13	5	405	169	0.0
Monaco	62	3	0	65	37	0.0
Netherlands	10,463	709	246	11,418	4,575	0.6
Switzerland	11,994	491	249	12,734	5,378	0.6
Eastern Europe	29,079	1,066	391	30,536	14,319	1.5
Bulgaria	677	12	15	704	344	0.0
Czech Republic	1,976	90	38	2,104	858	0.1
Estonia	663	22	26	711	313	0.0
Hungary	1,650	26	18	1,694	767	0.1
Lithuania	562	9	2	573	216	0.0
Poland	3,701	44	46	3,791	1,798	0.2
Romania	981	56	7	1,044	495	0.1
Russian Federation	16,245	634	186	17,065	8,259	0.8
Slovakia	1,061	85	34	1,180	484	0.1
Ukraine	1,563	88	19	1,670	785	0.1

International Tourist Arrivals to Cambodia by Purpose of Visit by Air in 2013

(by Air only)

Regions Country of Residence	2013					share
	Purpose of Visit			Total	Female	2013*
	Holiday	Business	Other			
GRAND TOTAL	1,863,693	130,158	23,807	2,017,658	914,330	100.0
Southern Europe	37,693	1,368	478	39,539	17,436	2.0
Croatia	311	23	10	344	162	0.0
Greece	759	18	11	788	317	0.0
Italy	13,715	607	232	14,554	5,939	0.7
Portugal	2,585	68	19	2,672	1,302	0.1
Serbia	247	33	12	292	144	0.0
Slovenia	372	23	2	397	168	0.0
Spain	17,027	310	162	17,499	8,190	0.9
Turkey	2,677	286	30	2,993	1,214	0.1
Other Europe	1,381	147	108	1,636	623	0.1
Americas	169,708	9,362	4,625	183,695	82,287	9.1
Argentina	3,055	20	37	3,112	1,585	0.2
Brazil	4,996	50	51	5,097	2,521	0.3
Canada	29,386	1,781	504	31,671	14,248	1.6
Chile	2,221	58	24	2,303	1,192	0.1
Colombia	1,275	18	26	1,319	686	0.1
Costa Rica	230	9	8	247	115	0.0
Ecuador	165	13	8	186	87	0.0
Mexico	4,182	38	22	4,242	2,083	0.2
Peru	396	19	17	432	215	0.0
United States	122,486	7,250	3,843	133,579	58,954	6.6
Uruguay	267	8	8	283	132	0.0
Other Americas	1,049	98	77	1,224	469	0.1
Africa	2,832	433	243	3,508	1,247	0.2
Cameroon	31	7	14	52	4	0.0
Congo	27	3	8	38	10	0.0
Ghana	60	4	9	73	28	0.0
Kenya	207	18	44	269	129	0.0
Liberia	23	0	5	28	5	0.0
Nigeria	269	213	40	522	53	0.0
Sudan	45	7	4	56	6	0.0
South Africa	1,942	154	77	2,173	902	0.1
Uganda	37	3	9	49	16	0.0
Other Africa	191	24	33	248	94	0.0
Middle East	4,046	285	156	4,487	1,557	0.2
Egypt	192	50	13	255	61	0.0
Iran	185	24	5	214	73	0.0
Iraq	59	4	7	70	17	0.0
Israel	2,977	187	41	3,205	1,226	0.2
Kuwait	77	1	29	107	27	0.0
Oman	71	0	2	73	13	0.0
Palestine	67	2	6	75	12	0.0
Qatar	63	0	7	70	34	0.0
Saudi Arabia	112	2	9	123	16	0.0
United Arab Emirates	17	0	1	18	1	0.0
Yemen	102	4	14	120	22	0.0
Other Middle East	124	11	22	157	55	0.0

Top Ten Generating Market from 2007 - 2013

2007				
rank		arrivals	share (%)	change (%)
1	Korea	329,909	16.4	15.6
2	Japan	161,973	8.0	2.3
3	USA	137,539	6.8	11.1
4	Vietnam	125,442	6.2	61.8
5	China	118,417	5.9	47.0
6	Taiwan, China	118,180	5.9	38.8
7	Thailand	101,590	5.0	32.0
8	France	90,168	4.5	25.3
9	United Kingdom	84,103	4.2	14.0
10	Malaysia	84,039	4.2	9.1

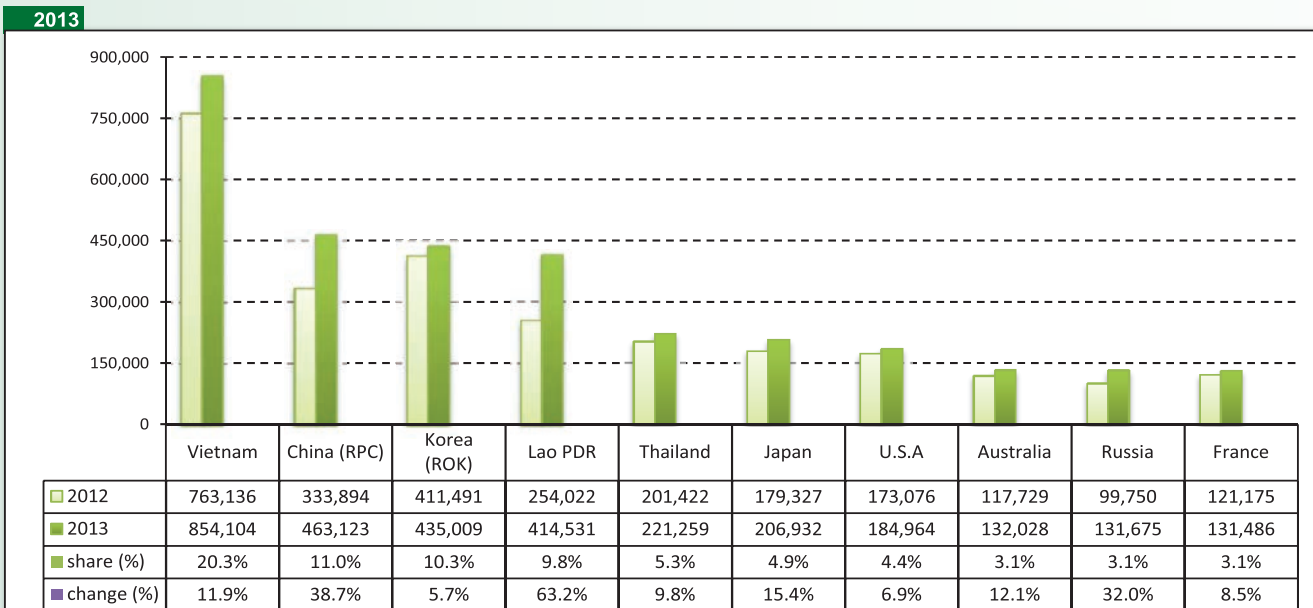
2008				
rank		arrivals	share (%)	change (%)
1	Korea	266,525	12.5	-19.2
2	Vietnam	209,516	9.9	67.0
3	Japan	163,806	7.7	1.1
4	USA	145,079	6.8	5.5
5	China	129,626	6.1	9.5
6	Thailand	109,020	5.1	7.3
7	United Kingdom	98,093	4.6	8.8
8	France	97,517	4.6	16.0
9	Australia	84,957	4.0	18.6
10	Taiwan, China	83,000	3.9	-29.8

2009				
rank		arrivals	share (%)	change (%)
1	Vietnam	316,202	14.6	50.9
2	Korea	197,725	9.2	-25.8
3	U.S.A	148,482	6.9	2.4
4	Japan	146,286	6.8	-10.7
5	China	128,210	5.9	-1.1
6	United Kingdom	106,837	4.9	8.9
7	France	105,437	4.9	8.1
8	Thailand	102,018	4.7	-6.4
9	Lao PDR	94,181	4.4	54.6
10	Australia	84,581	3.9	-0.4

2010				
rank		arrivals	share (%)	change (%)
1	Vietnam	514,289	20.5	62.6
2	Korea	289,702	11.6	46.5
3	China	177,636	7.1	38.6
4	Japan	151,795	6.1	3.8
5	Thailand	149,108	5.9	16.3
6	U.S.A	146,005	5.8	-1.7
7	France	113,285	4.5	7.4
8	U.K	103,067	4.1	-3.5
9	Australia	93,598	3.7	10.7
10	Taiwan, China	91,229	3.6	26.5

2011				
rank		arrivals	share (%)	change (%)
1	Vietnam	614,090	21.3	19.4
2	Korea	342,810	11.9	18.3
3	China	247,197	8.6	39.2
4	Japan	161,804	5.6	6.6
5	U.S.A	153,953	5.3	5.4
6	Lao PDR	128,525	4.5	39.3
7	France	117,408	4.1	3.6
8	Thailand	116,758	4.1	-21.7
9	Australia	105,010	3.6	12.2
10	U.K	104,052	3.6	1.0

2012				
rank		arrivals	share (%)	change (%)
1	Vietnam	763,136	21.3	24.3
2	Korea (ROK)	411,491	11.5	20.0
3	China (RPC)	333,894	9.3	35.1
4	Lao PDR	254,022	7.1	97.6
5	Thailand	201,422	5.6	72.5
6	Japan	179,327	5.0	10.8
7	U.S.A	173,076	4.8	12.4
8	France	121,175	3.4	3.2
9	Australia	117,729	3.3	12.1
10	Malaysia	116,764	3.3	13.4



International Tourist Arrivals to Cambodia by International Border Check-points in 2013

No. International border check-points	Months													share (%)
	Jan	Feb	Mar	Apr	May	Jun	Jul	Aug	Sep	Oct	Nov	Dec	TOTAL	
Grand Total	404,106	385,760	382,206	327,000	292,115	301,412	338,761	342,064	283,787	334,410	386,737	431,807	4,210,165	100.0
Air	215,210	203,453	192,497	145,348	126,255	126,452	144,649	153,905	129,458	156,060	197,409	226,962	2,017,658	47.9
Phnom Penh Int'l Airport	72,549	68,988	77,375	62,859	60,880	64,019	68,078	66,865	59,018	67,988	81,430	86,328	836,377	19.9
Siem Reap Int'l Airport	142,661	134,465	115,122	82,489	65,375	62,433	76,571	87,040	70,440	88,072	115,979	140,634	1,181,281	28.1
Lands and Water ways	188,896	182,307	189,709	181,652	165,860	174,960	194,112	188,159	154,329	178,350	189,328	204,845	2,192,507	52.1
Lands	179,318	174,087	182,478	175,881	161,471	172,993	190,282	183,374	149,245	171,255	181,543	196,231	2,118,158	50.3
Water ways	9,578	8,220	7,231	5,771	4,389	1,967	3,830	4,785	5,084	7,095	7,785	8,614	74,349	1.8
1 Cambodia - Thailand	119,583	104,777	114,517	95,015	99,662	100,456	113,350	113,838	103,740	117,284	114,980	130,520	1,327,722	31.5
Poi Pet	63,994	56,592	57,076	44,588	41,315	36,160	50,405	45,083	37,062	47,777	48,744	57,098	585,894	13.9
Cham Yeam	5,732	5,477	6,871	7,293	8,242	8,558	8,899	9,334	6,724	8,072	7,942	10,030	93,174	2.2
Prom	16,018	11,542	14,459	12,032	12,233	12,577	13,701	14,470	14,363	14,863	17,813	18,050	172,121	4.1
Daung	26,050	22,966	31,353	26,191	33,193	39,985	37,498	40,632	40,857	39,048	37,112	40,508	415,393	9.9
O'Smach	2,549	3,321	2,129	2,042	1,710	2,065	1,746	2,445	1,814	2,904	2,017	2,052	26,794	0.6
Chorm	1,789	1,822	2,154	1,544	1,009	1,111	1,101	1,874	961	2,032	1,186	1,355	17,938	0.4
Sihanoukville (Int'l sea port)	3,451	3,057	475	1,325	1,960	0	0	0	1,959	2,588	166	1,427	16,408	0.4
2 Cambodia - Vietnam	65,008	71,031	70,870	83,019	62,513	71,607	77,326	70,000	48,247	58,720	69,345	70,139	817,825	19.4
Bavet	40,897	49,157	44,431	55,876	40,793	50,037	53,811	48,156	30,523	38,151	42,705	43,027	537,564	12.8
Phnom Den	2,601	2,869	3,402	5,716	2,589	3,590	4,652	2,297	2,386	2,346	2,859	2,920	38,227	0.9
Trapaing Plong	2,393	1,860	2,778	2,661	1,980	2,677	2,138	2,440	1,514	2,032	2,313	2,068	26,854	0.6
Trapaing Sré	3,574	3,496	3,749	3,159	3,878	4,084	3,352	3,620	3,164	3,334	3,577	3,471	42,458	1.0
Prek Chak	3,221	2,920	2,707	3,316	2,107	2,331	2,412	1,962	1,504	1,750	2,416	3,521	30,167	0.7
Oya Dao	4,149	3,411	5,200	5,436	6,511	4,768	5,010	4,388	4,007	4,150	4,991	5,097	57,118	1.4
Banteay Chak Krey	1,417	1,645	1,369	1,710	1,493	1,338	1,186	1,385	1,165	1,321	1,484	1,609	17,122	0.4
Prey Vor	584	459	409	630	673	761	888	908	823	1,072	1,302	1,161	9,670	0.2
Koh Rorka	45	51	69	69	60	54	47	59	36	57	79	78	704	0.0
Kaam Samnor	5,345	4,436	5,698	3,489	2,338	1,742	3,089	4,016	1,948	3,364	6,544	6,107	48,116	1.1
Phnom Penh Port	782	727	1,058	957	91	225	741	769	1,177	1,143	1,075	1,080	9,825	0.2
3 Cambodia - Lao	4,305	6,499	4,322	3,618	3,685	2,897	3,436	4,321	2,342	2,346	5,003	4,186	46,960	1.1
Trapaing Kreal	4,305	6,499	4,322	3,618	3,685	2,897	3,436	4,321	2,342	2,346	5,003	4,186	46,960	1.1

International Tourist Arrivals to Cambodia by International Border Check-points in 2013

(by purpose of visit)

International Border No. Check-points	2012	2013				Total	share (%) 2013*	change (%) 2013*/12
		Purpose of Visit						
		Holiday	Business	Other				
Grand Total	3,584,307	3,972,971	185,581	51,613	4,210,165	100.0	17.5	
Air	1,722,083	1,863,693	130,158	23,807	2,017,658	47.9	17.2	
Phnom Penh Int'l Airport	716,584	693,535	122,773	20,069	836,377	19.9	16.7	
Siem Reap Int'l Airport	1,005,499	1,170,158	7,385	3,738	1,181,281	28.1	17.5	
Lands and Water ways	1,862,224	2,109,278	55,423	27,806	2,192,507	52.1	17.7	
Lands	1,785,726	2,035,130	55,383	27,645	2,118,158	50.3	18.6	
Water ways	76,498	74,148	40	161	74,349	1.8	-2.8	
1 Cambodia - Thailand	1,026,655	1,289,542	23,833	14,347	1,327,722	31.5	29.3	
Poi Pet	568,278	554,923	18,900	12,071	585,894	13.9	3.1	
Cham Yeam	35,730	87,946	3,905	1,323	93,174	2.2	160.8	
Prom	124,493	171,140	472	509	172,121	4.1	38.3	
Daung	231,420	415,124	180	89	415,393	9.9	79.5	
O'Smach	25,746	26,375	250	169	26,794	0.6	4.1	
Chorm	20,704	17,626	126	186	17,938	0.4	-13.4	
Sihanoukville (Int'l sea port)	20,284	16,408			16,408	0.4	-19.1	
2 Cambodia - Vietnam	791,621	773,367	31,384	13,074	817,825	19.4	3.3	
Bavet	513,021	500,493	27,985	9,086	537,564	12.8	4.8	
Phnom Den	41,461	37,086	315	826	38,227	0.9	-7.8	
Trapaing Plong	32,493	25,751	683	420	26,854	0.6	-17.4	
Trapaing Sré	52,528	41,983	217	258	42,458	1.0	-19.2	
Prek Chak	30,033	28,370	1,242	555	30,167	0.7	0.4	
Oya Dao	41,914	55,931	509	678	57,118	1.4	36.3	
Banteay Chak Krey	17,008	15,705	356	1,061	17,122	0.4	0.7	
Prey Vor	6,949	9,604	37	29	9,670	0.2	39.2	
Koh Rorka		704			704	0.0		
Kaam Samnor	47,688	47,915	40	161	48,116	1.1	0.9	
Phnom Penh Port	8,526	9,825			9,825	0.2	15.2	
3 Cambodia - Lao	43,948	46,369	206	385	46,960	1.1	6.9	
Trapaing Kreal	43,948	46,369	206	385	46,960	1.1	6.9	

Cambodian Outbound Tourism by Int'l Border Check-points in 2013
 (by mode of transports and purpose of visit)

International Border No. Check-points	2012	2013		Total	share	change
		Purpose of Visit			(%)	(%)
		Holiday	Other		2013*	2013*/12
Grand Total	792,398	850,985	20,661	871,646	100.0	10.0
Air	185,694	209,100	8,585	217,685	25.0	17.2
Phnom Penh Int'l Airport	179,580	202,399	8,514	210,913	24.2	17.4
Siem Reap Int'l Airport	6,114	6,701	71	6,772	0.8	10.8
Lands and Water ways	606,704	641,885	12,076	653,961	75.0	7.8
Lands	604,953	640,059	12,076	652,135	74.8	7.8
Water ways	1,751	1,826	0	1,826	0.2	4.3
1 Cambodia - Thailand	385,788	440,320	2,663	442,983	50.8	14.8
Poi Pet	315,525	341,916	2,071	343,987	39.5	9.0
Cham Yeam	20,532	24,858	242	25,100	2.9	22.2
Prom	15,329	21,056	237	21,293	2.4	38.9
Daung	23,171	36,676	1	36,677	4.2	58.3
O'Smach	8,875	12,931	24	12,955	1.5	46.0
Chorm	2,356	2,883	88	2,971	0.3	26.1
2 Cambodia - Vietnam	216,629	196,810	9,262	206,072	23.6	-4.9
Bavet	192,927	177,145	8,680	185,825	21.3	-3.7
Phnom Den	5,850	5,541	175	5,716	0.7	-2.3
Trapaing Plong	5,880	4,687	97	4,784	0.5	-18.6
Trapaing Sré	1,717	998	105	1,103	0.1	-35.8
Prek Chak	5,007	2,870	60	2,930	0.3	-41.5
Oya Dao	1,298	1,309	100	1,409	0.2	8.6
Banteay Chak Krey	1,854	1,903	33	1,936	0.2	4.4
Prey Vor	345	482	12	494	0.1	
Koh Rorka		49		49	0.0	
Kaam Samnor	1,746	1,800		1,800	0.2	3.1
Phnom Penh Port	5	26		26	0.0	420.0
3 Cambodia - Lao	4,287	4,755	151	4,906	0.6	14.4
Trapaing Kreal	4,287	4,755	151	4,906	0.6	14.4



International Outbound Tourism by Int'l Border Check Points in 2013

(by mode of transports and purpose of visit)

No.	International Border Check Points	2012		2013			share (%)	change (%)
		Purpose of Visit			Total	2013*		
		Holiday	Business	Other				
	Grand Total	3,504,584	3,909,559	231,001	33,037	4,173,597	100.0	19.1
	Air	1,714,059	1,850,665	138,829	23,022	2,012,516	48.2	17.4
	Phnom Penh Int'l Airport	723,858	704,461	130,314	18,947	853,722	20.5	17.9
	Siem Reap Int'l Airport	990,201	1,146,204	8,515	4,075	1,158,794	27.8	17.0
	Lands and Water ways	1,790,525	2,058,894	92,172	10,015	2,161,081	51.8	20.7
	Lands	1,741,340	2,006,999	92,163	10,014	2,109,176	50.5	21.1
	Water ways	49,185	51,895	9	1	51,905	1.2	5.5
1	Cambodia - Thailand	1,015,913	1,173,820	36,233	5,181	1,215,234	29.1	19.6
	Poi Pet	569,766	612,949	31,283	4,678	648,910	15.5	13.9
	Cham Yeam	47,666	59,630	4,097	268	63,995	1.5	34.3
	Prom	123,658	172,284	374	99	172,757	4.1	39.7
	Daung	211,260	270,055	138	8	270,201	6.5	27.9
	O'Smach	24,535	24,414	245	7	24,666	0.6	0.5
	Chorm	18,587	17,951	96	121	18,168	0.4	-2.3
	Sihanoukville (Int'l sea port)	20,441	16,537	0	0	16,537	0.4	-19.1
2	Cambodia - Vietnam	742,112	850,263	55,690	4,608	910,561	21.8	22.7
	Bavet	511,866	567,730	39,986	3,360	611,076	14.6	19.4
	Phnom Den	33,737	26,588	13,387	41	40,016	1.0	18.6
	Trapaing Plong	26,298	29,959	629	52	30,640	0.7	16.5
	Trapaing Sré	49,319	62,871	250	233	63,354	1.5	28.5
	Prek Chak	29,520	39,657	427	174	40,258	1.0	36.4
	Oya Dao	40,414	53,955	592	670	55,217	1.3	36.6
	Banteay Chak Krey	15,801	21,106	377	76	21,559	0.5	36.4
	Prey Vor	6,413	11,374	33	1	11,408	0.3	77.9
	Koh Rorka		1,665			1,665	0.0	
	Kaam Samnor	20,479	25,464	9	1	25,474	0.6	24.4
	Phnom Penh Port	8,265	9,894			9,894	0.2	19.7
3	Cambodia - Lao	32,500	34,811	249	226	35,286	0.8	8.6
	Trapaing Kreal	32,500	34,811	249	226	35,286	0.8	8.6

International Outbound Tourism by Months in 2009 - 2013

Months	International Outbound					change (%) 2013*/12
	2009	2010	2011	2012	2013	
January	199,905	215,702	279,303	356,884	413,103	15.8
February	183,808	212,222	253,363	311,097	386,508	24.2
March	188,323	213,645	250,261	318,776	382,680	20.0
April	150,744	183,147	215,957	275,739	323,714	17.4
May	146,758	174,019	191,274	245,791	301,372	22.6
June	125,746	155,291	188,863	246,741	295,284	19.7
July	150,580	185,426	230,580	246,741	333,425	35.1
August	169,034	206,427	257,499	297,916	346,436	16.3
September	130,337	159,720	215,988	237,456	285,082	20.1
October	143,354	188,208	220,797	278,170	318,058	14.3
November	173,102	230,741	254,434	315,143	370,712	17.6
December	190,136	230,275	288,990	374,130	417,223	11.5
Total	1,951,827	2,354,823	2,847,309	3,504,584	4,173,597	19.1

International Outbound Tourism by Country of Residence in 2013

(by Purpose of Visit)

Regions Country of Residence	2012		2013			share		change	
		Purpose of Visit			Total	Female	share (%)	change (%)	
		Holiday	Business	Other					
GRAND TOTAL	3,504,584	3,952,911	191,011	29,675	4,173,597	1,961,496	100.0	19.1	
Asia and the Pacific	2,629,632	3,035,620	153,525	16,917	3,206,062	1,539,302	76.8	21.9	
ASEAN	1,459,743	1,766,047	47,106	7,302	1,820,455	896,972	43.6	24.7	
Brunei Darussalam	969	757	19	55	831	363	0.0	-14.2	
Indonesia	21,845	22,720	4,116	236	27,072	8,270	0.6	23.9	
Lao PDR	242,360	412,956	194	431	413,581	267,196	9.9	70.6	
Malaysia	123,698	119,870	9,552	235	129,657	46,467	3.1	4.8	
Myanmar	4,875	4,689	689	221	5,599	2,199	0.1	14.9	
Philippines	95,061	109,329	7,584	808	117,721	69,541	2.8	23.8	
Singapore	53,825	54,970	3,724	233	58,927	21,140	1.4	9.5	
Thailand	181,916	200,225	11,370	2,788	214,383	91,865	5.1	17.8	
Vietnam	735,194	840,531	9,858	2,295	852,684	389,931	20.4	16.0	
Eastern Asia	1,007,452	1,098,428	93,956	6,690	1,199,074	564,558	28.7	19.0	
China (RPC)	330,140	398,162	53,917	3,009	455,088	218,040	10.9	37.8	
Hong Kong SAR	7,987	7,854	179	10	8,043	4,031	0.2	0.7	
Japan	176,317	189,523	9,951	1,853	201,327	86,067	4.8	14.2	
Korea (ROK)	403,797	419,461	16,545	1,662	437,668	216,183	10.5	8.4	
Mongolia	382	272	82	13	367	139	0.0	-3.9	
Taiwan, China	88,829	83,156	13,282	143	96,581	40,098	2.3	8.7	
Southern Asia	23,552	24,872	4,069	943	29,884	8,241	0.7	26.9	
Afghanistan	85	91	5	20	116	18	0.0	36.5	
Bangladesh	1,131	976	223	136	1,335	211	0.0	18.0	
Bhutan	118	68	8	19	95	31	0.0	-19.5	
India	18,341	20,604	2,749	522	23,875	6,996	0.6	30.2	
Nepal	1,437	1,188	218	103	1,509	354	0.0	5.0	
Pakistan	1,167	782	422	70	1,274	236	0.0	9.2	
Srilanka	1,273	1,163	444	73	1,680	395	0.0	32.0	
Western Asia	2,370	2,823	210	25	3,058	1,620	0.1	29.0	
Kazakhstan	1,833	2,259	173	19	2,451	1,266	0.1	33.7	
Uzbekistan	537	564	37	6	607	354	0.0	13.0	
Oceania	135,751	142,995	8,005	1,743	152,743	66,636	3.7	12.5	
Australia	117,201	123,369	6,781	1,528	131,678	57,815	3.2	12.4	
Fiji	181	90	5	12	107	39	0.0	-40.9	
New Zealand	18,369	19,536	1,219	203	20,958	8,782	0.5	14.1	
Other Asia & the Pacific	764	455	179	214	848	1,275	0.0	11.0	
Europe	604,846	657,717	23,606	7,001	688,324	300,301	16.5	13.8	
Northern Europe	159,453	165,336	7,032	1,665	174,033	68,221	4.2	9.1	
Denmark	9,041	10,306	308	128	10,742	4,329	0.3	18.8	
Finland	8,791	5,780	232	92	6,104	2,236	0.1	-30.6	
Iceland	1,414	979	91	25	1,095	395	0.0	-22.6	
Ireland	9,329	8,507	272	64	8,843	3,735	0.2	-5.2	
Norway	8,051	8,697	256	103	9,056	3,649	0.2	12.5	
Sweden	15,350	15,639	548	214	16,401	6,145	0.4	6.8	
United Kingdom	107,477	115,428	5,325	1,039	121,792	47,732	2.9	13.3	
Western Europe	261,587	269,415	12,551	4,229	286,195	118,950	6.9	9.4	
Austria	8,209	8,850	261	73	9,184	3,687	0.2	11.9	
Belgium	14,684	15,268	698	312	16,278	6,326	0.4	10.9	
France	118,097	122,343	7,910	2,449	132,702	55,948	3.2	12.4	
Germany	71,378	77,338	2,106	861	80,305	33,141	1.9	12.5	
Luxembourg	575	803	7	3	813	375	0.0	41.4	
Monaco	29	64	4	0	68	33	0.0	134.5	
Netherlands	22,612	26,437	889	294	27,620	11,539	0.7	22.1	
Switzerland	26,003	18,312	676	237	19,225	7,901	0.5	-26.1	
Eastern Europe	125,995	161,741	2,024	380	164,145	85,988	3.9	30.3	
Bulgaria	609	804	20	7	831	396	0.0	36.5	
Czech Republic	4,216	4,886	112	31	5,029	2,090	0.1	19.3	
Estonia	969	933	19	17	969	385	0.0	0.0	
Hungary	2,517	2,902	42	25	2,969	1,235	0.1	18.0	
Lithuania	1,077	1,532	19	1	1,552	758	0.0	44.1	
Poland	12,428	12,394	96	47	12,537	6,242	0.3	0.9	
Romania	1,165	1,476	67	18	1,561	779	0.0	34.0	
Russian Federation	95,476	129,320	1,495	180	130,995	70,326	3.1	37.2	
Slovakia	2,777	1,881	75	37	1,993	840	0.0	-28.2	
Ukraine	4,761	5,613	79	17	5,709	2,937	0.1	19.9	

International Outbound Tourism by Country of Residence in 2013

(by Purpose of Visit)

Regions Country of Residence	2012		2013			Total	Female	share	change
	Purpose of Visit			2013*	2013*/12				
	Holiday	Business	Other			(%)	(%)		
GRAND TOTAL	3,504,584	3,952,911	191,011	29,675	4,173,597	1,961,496	100.0	19.1	
Southern Europe	57,004	60,659	1,858	558	63,075	26,023	1.5	10.7	
Croatia	622	737	14	14	765	340	0.0	23.0	
Greece	1,070	1,131	37	12	1,180	446	0.0	10.3	
Italy	23,055	24,301	829	241	25,371	9,576	0.6	10.0	
Portugal	2,943	3,843	123	16	3,982	1,835	0.1	35.3	
Serbia	428	539	22	7	568	289	0.0	32.7	
Slovenia	996	1,005	27	5	1,037	424	0.0	4.1	
Spain	24,230	24,959	500	200	25,659	11,669	0.6	5.9	
Turkey	3,660	4,144	306	63	4,513	1,444	0.1	23.3	
Other Europe	807	566	141	169	876	1,119	0.0	8.6	
Americas	241,479	243,110	12,972	5,336	261,418	115,423	6.3	8.3	
Argentina	4,297	5,224	36	52	5,312	2,682	0.1	23.6	
Brazil	4,878	6,835	84	64	6,983	3,274	0.2	43.2	
Canada	46,681	48,189	2,461	524	51,174	22,361	1.2	9.6	
Chile	4,511	4,093	64	51	4,208	2,055	0.1	-6.7	
Colombia	1,397	1,602	33	27	1,662	792	0.0	19.0	
Costa Rica	233	318	11	6	335	159	0.0	43.8	
Ecuador	162	221	16	10	247	134	0.0	52.5	
Mexico	4,003	4,703	61	27	4,791	2,409	0.1	19.7	
Peru	536	649	40	33	722	344	0.0	34.7	
United States	170,585	170,043	10,048	4,412	184,503	80,045	4.4	8.2	
Uruguay	3,645	656	4	15	675	320	0.0	-81.5	
Other Americas	551	577	114	115	806	848	0.0	46.3	
Africa	5,525	6,157	553	259	6,969	2,850	0.2	26.1	
Cameroon	667	153	7	21	181	56	0.0	-72.9	
Congo	53	39	3	6	48	9	0.0	-9.4	
Ghana	127	66	6	12	84	27	0.0	-33.9	
Kenya	284	201	17	41	259	122	0.0	-8.8	
Liberia	64	22	1	0	23	4	0.0	-64.1	
Nigeria	526	309	231	34	574	61	0.0	9.1	
Sudan	34	34	2	11	47	8	0.0	38.2	
South Africa	3,386	4,976	245	84	5,305	2,365	0.1	56.7	
Uganda	77	55	5	9	69	24	0.0	-10.4	
Other Africa	307	302	36	41	379	174	0.0	23.5	
Middle East	23,102	10,307	355	162	10,824	3,620	0.3	-53.1	
Egypt	181	262	30	8	300	50	0.0	65.7	
Iran	998	653	17	8	678	155	0.0	-32.1	
Iraq	206	96	3	5	104	20	0.0	-49.5	
Israel	7,552	7,232	257	47	7,536	2,878	0.2	-0.2	
Kuwait	11,441	1,069	2	29	1,100	59	0.0	-90.4	
Oman	139	215	3	2	220	33	0.0	58.3	
Palestine	42	72	3	1	76	10	0.0	81.0	
Qatar	81	105	7	8	120	210	0.0	48.1	
Saudi Arabia	364	127	8	12	147	32	0.0	-59.6	
United Arab Emirates	1,693	145	0	3	148	19	0.0	-91.3	
Yemen	183	115	5	12	132	28	0.0	-27.9	
Other Middle East	222	216	20	27	263	126	0.0	18.5	

Major data in 1993 - 2013

Years	Visitor Arrivals		Average Length of Stay	Hotel Occupancy Rate	Tourism Receipts
	number	change (%)	(Days)	(%)	Million (US\$)
1993	118,183	-	N/A	N/A	N/A
1994	176,617	49.4	N/A	N/A	N/A
1995	219,680	24.4	8.00	37.00	100
1996	260,489	18.6	7.50	40.00	118
1997	218,843	-16.0	6.40	30.00	103
1998	289,524	32.3	5.20	40.00	166
1999	367,743	27.0	5.50	44.00	190
2000	466,365	26.8	5.50	45.00	228
2001	604,919	29.7	5.50	48.00	304
2002	786,524	30.0	5.80	50.00	379
2003	701,014	-10.9	5.50	50.00	347
2004	1,055,202	50.5	6.30	52.00	578
2005	1,421,615	34.7	6.30	52.00	832
2006	1,700,041	19.6	6.50	54.79	1,049
2007	2,015,128	18.5	6.50	54.79	1,403
2008	2,125,465	5.5	6.65	62.68	1,595
2009	2,161,577	1.7	6.45	63.57	1,561
2010	2,508,289	16.0	6.45	65.74	1,786
2011	2,881,862	14.9	6.50	66.15	1,912
2012	3,584,307	24.4	6.30	68.49	2,210
2013	4,210,165	17.5	6.75	69.53	2,547

Average length of stay

Kind of tourist	Phnom Penh	Siem Reap	Expenditure
	(Days)	(Days)	(US\$ / Day)
GIT	4.91	4.65	
FIT	6.05	6.01	
Total	4.58	4.43	120.76

GIT: Group Inclusive Travelers

FIT: Free Independent Travelers

Average expenditure of individual

Items	Expenditure (US\$)
Accommodation	148.57
Food & beverage	84.42
Shopping	94.35
Local transport	80.04
Others	79.03
Average	486.41

Average expenditure of group tours

Items	Expenditure (US\$)
Package Tours	983.46
Shopping	180.11
Others	101.07
Total	1,264.64

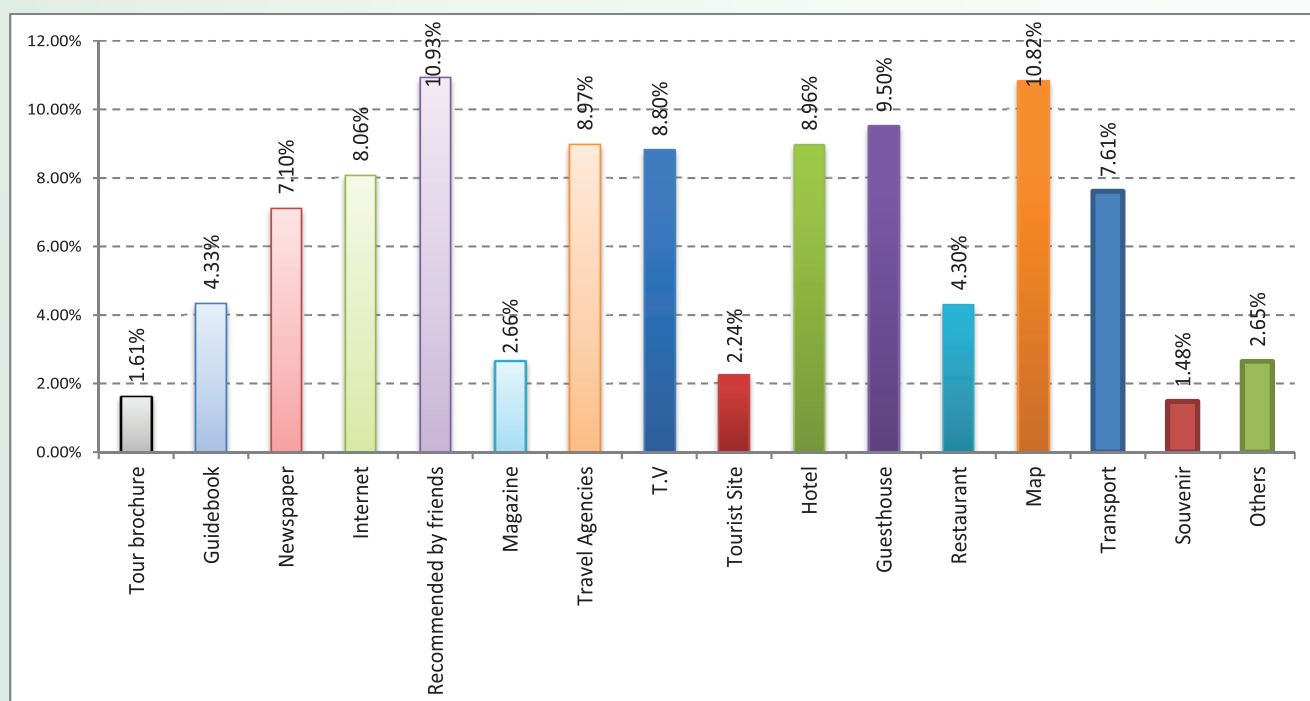
Profile of international Tourist Arrivals to Cambodia in 2010 - 2013 (Inbound Tourism Survey 2013)

Tourist Characteristic	2010		2011		2012		2013	
	PNH (%)	REP (%)	PNH (%)	REP (%)	PNH (%)	REP (%)	PNH (%)	REP (%)
Frequency of Visit	100.00	100.00	100.00	100.00	100.00	100.00	100.00	100.00
First Visit	80.54	93.11	82.47	78.65	84.57	81.63	84.16	83.49
Revisit	19.46	6.89	17.53	21.35	15.43	18.37	15.84	16.51
Travel Arrangement	100.00	100.00	100.00	100.00	100.00	100.00	100.00	100.00
GIT	31.14	47.78	35.19	62.32	45.29	63.51	49.62	67.38
FIT	68.86	52.22	64.81	37.68	54.71	36.49	50.38	32.62
Sex	100.00	100.00	100.00	100.00	100.00	100.00	100.00	100.00
Male	62.28	57.11	65.12	45.22	62.53	47.38	64.07	48.04
Female	37.72	42.89	34.88	54.78	37.47	52.62	35.93	51.96
Purpose of Visit	100.00	100.00	100.00	100.00	100.00	100.00	100.00	100.00
Holiday, Leisure	65.27	86.00	73.14	88.11	71.16	87.43	82.56	98.47
Business	8.08	4.00	9.27	4.56	10.31	4.32	14.68	0.63
Official	3.59	2.22	4.32	2.34	4.52	2.28	2.16	0.27
Friend/Parents (VFR)	15.87	5.56	9.72	3.64	10.70	5.09	0.24	0.05
Others	7.19	2.22	3.55	1.35	3.31	0.88	0.36	0.58
Age	100.00	100.00	100.00	100.00	100.00	100.00	100.00	100.00
Under - 19	11.08	12.56	13.97	12.29	12.74	11.94	10.21	12.19
20 - 29	21.45	23.81	28.42	27.35	22.56	24.14	24.13	25.34
30 - 39	11.08	13.45	23.73	27.97	13.08	27.84	14.12	26.13
40 - 49	28.50	29.73	21.61	26.52	31.57	28.36	33.46	34.16
50 - 59	19.34	17.46	9.11	3.34	17.26	4.87	17.27	1.47
60 - Over	8.55	2.99	3.16	2.53	2.79	2.85	0.81	0.71
Occupation	100.00	100.00	100.00	100.00	100.00	100.00	100.00	100.00
Employee	30.53	28.44	30.21	29.16	31.25	30.19	30.37	31.05
Business	12.57	12.44	23.36	13.98	19.42	14.25	19.52	16.51
Teacher	6.89	9.11	17.14	9.29	9.08	8.19	18.63	8.21
Retired	7.49	10.67	7.91	12.63	6.97	11.67	11.09	12.64
Official	2.10	2.44	6.52	5.34	5.16	4.38	7.94	4.97
Student	22.75	18.44	11.67	18.16	18.10	19.16	12.45	19.05
Others	17.67	18.46	3.19	11.44	10.02	12.16	8.52	7.57

Note:

PNH: Phnom Penh Area

REP: Siem Reap Area

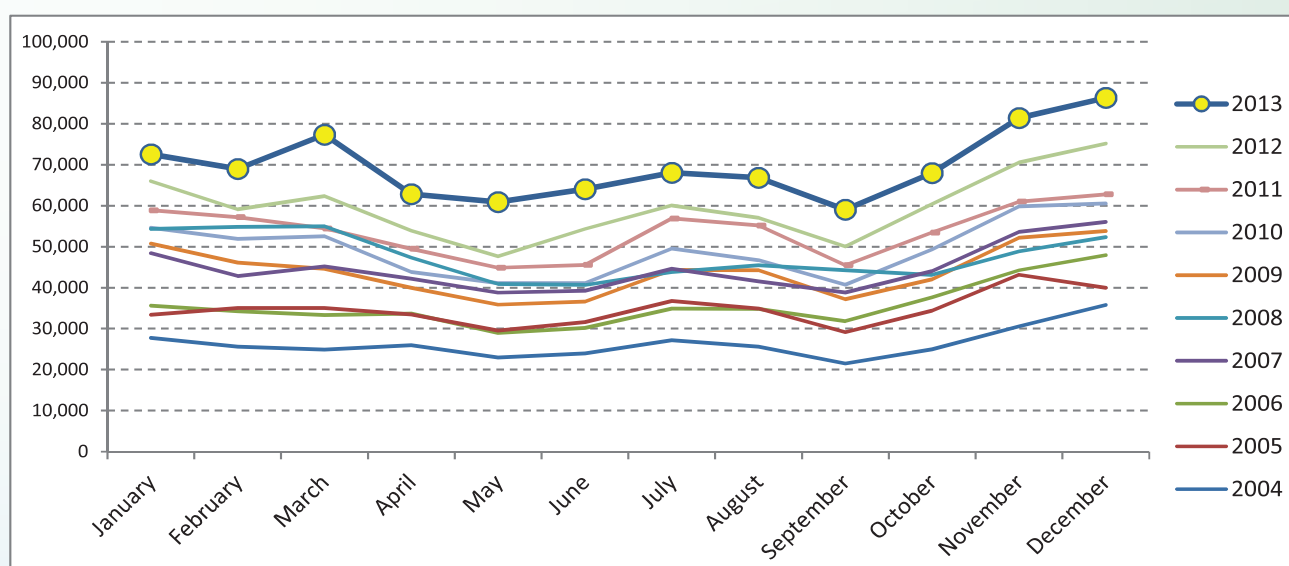


SECTION I

**PHNOM PENH INTERNATIONAL
AIRPORT**

Int'l Tourist Arrivals to Phnom Penh International Airport by Months in 2004 - 2013

Months	2004	2005	2006	2007	2008	2009	2010	2011	2012	2013	change(%) 2013*/12
Q1	78,245	103,482	103,203	136,350	164,166	141,496	158,979	170,558	187,408	218,912	16.8
January	27,767	33,409	35,601	48,383	54,336	50,749	54,584	58,905	65,956	72,549	10.0
February	25,602	35,012	34,274	42,808	54,854	46,128	51,867	57,202	59,122	68,988	16.7
March	24,876	35,061	33,328	45,159	54,976	44,619	52,528	54,451	62,330	77,375	24.1
Q2	72,908	94,648	92,824	120,202	128,926	112,410	126,012	139,906	155,878	187,758	20.5
April	25,955	33,482	33,655	42,153	47,358	39,983	43,797	49,478	53,883	62,859	16.7
May	22,986	29,543	28,959	38,780	40,907	35,850	41,131	44,874	47,636	60,880	27.8
June	23,967	31,623	30,210	39,269	40,661	36,577	41,084	45,554	54,359	64,019	17.8
Q3	74,310	100,750	101,575	124,967	133,508	125,812	136,939	157,531	167,096	193,961	16.1
July	27,202	36,742	34,908	44,623	43,793	44,356	49,519	56,875	60,057	68,078	13.4
August	25,620	34,861	34,841	41,534	45,492	44,264	46,697	55,182	57,016	66,865	17.3
September	21,488	29,147	31,826	38,810	44,223	37,192	40,723	45,474	50,023	59,018	18.0
Q4	91,285	117,516	129,787	153,743	144,303	148,027	169,698	177,240	206,202	235,746	14.3
October	24,968	34,416	37,576	44,052	43,122	42,024	49,353	53,459	60,437	67,988	12.5
November	30,537	43,164	44,279	53,638	48,824	52,181	59,803	61,005	70,588	81,430	15.4
December	35,780	39,936	47,932	56,053	52,357	53,822	60,542	62,776	75,177	86,328	14.8
Total	316,748	416,396	427,389	535,262	570,903	527,745	591,628	645,235	716,584	836,377	16.7



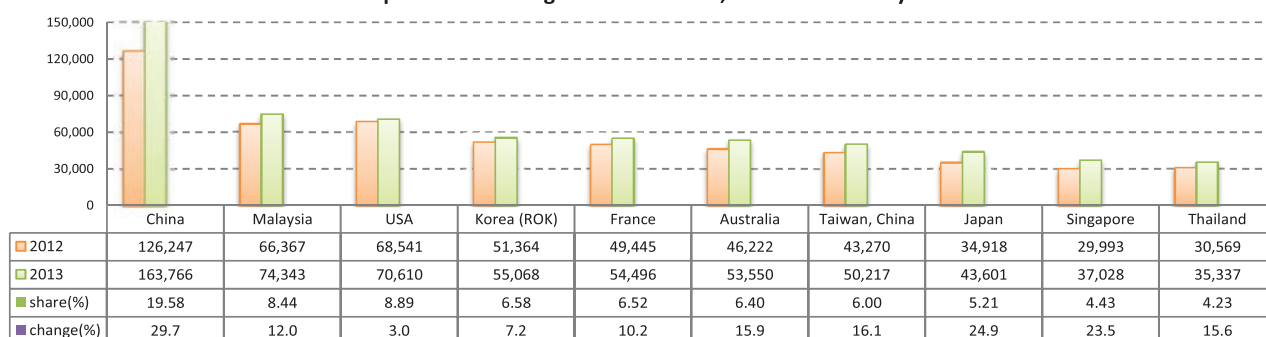
International Tourist Arrivals to Phnom Penh International Airport by Country of Residence in 2013

(by Air only)

Regions Country of Residence	2013												Total	share (%) 2013*
	Jan	Feb	Mar	Apr	May	Jun	Jul	Aug	Sep	Oct	Nov	Dec		
GRAND TOTAL	72,549	68,988	77,375	62,859	60,880	64,019	68,078	66,865	59,018	67,988	81,430	86,328	836,377	100.0
Asia and the Pacific	45,982	44,019	51,038	43,673	44,245	45,944	46,640	48,426	45,177	48,808	53,636	58,302	575,890	68.9
ASEAN	13,625	11,817	15,020	13,777	16,359	15,935	14,389	15,255	14,515	16,399	18,003	18,858	183,952	22.0
Brunei Darussalam	31	48	83	22	19	25	55	51	11	32	30	52	459	0.1
Indonesia	734	498	552	503	784	722	553	961	545	627	689	791	7,959	1.0
Lao PDR	137	179	181	184	167	202	147	154	180	231	345	205	2,312	0.3
Malaysia	5,622	4,694	6,171	5,376	6,456	6,371	5,450	5,944	5,865	7,290	7,353	7,751	74,343	8.9
Myanmar	135	130	141	250	189	0	227	192	179	241	301	203	2,188	0.3
Philippines	562	543	525	674	682	603	651	622	581	811	791	576	7,621	0.9
Singapore	2,403	2,176	2,868	2,444	3,305	3,551	2,554	2,716	2,877	2,985	4,018	5,131	37,028	4.4
Thailand	2,967	2,251	3,171	2,796	3,447	2,851	3,115	3,044	3,082	2,763	3,068	2,782	35,337	4.2
Vietnam	1,034	1,298	1,328	1,528	1,310	1,610	1,637	1,571	1,195	1,419	1,408	1,367	16,705	2.0
Eastern Asia	24,612	26,727	29,383	23,722	22,821	23,736	26,532	28,111	24,551	25,921	27,891	28,840	312,847	37.4
China (RPC)	11,542	15,419	17,075	12,737	11,511	11,733	13,243	13,374	12,886	13,626	15,144	15,476	163,766	19.6
Hong Kong SAR													0	0.0
Japan	3,347	4,038	4,371	2,992	3,274	2,977	3,151	4,485	3,747	3,290	3,967	3,962	43,601	5.2
Korea (ROK)	6,165	3,872	3,530	3,764	3,680	4,866	6,283	5,885	4,003	4,593	4,322	4,105	55,068	6.6
Mongolia	9	14	16	9	31	10	10	5	12	56	10	13	195	0.0
Taiwan, China	3,549	3,384	4,391	4,220	4,325	4,150	3,845	4,362	3,903	4,356	4,448	5,284	50,217	6.0
Southern Asia	1,018	1,074	1,154	1,170	1,265	1,233	1,121	1,396	1,262	1,361	1,179	1,448	14,681	1.8
Afghanistan	14	16	17	46	40	35	17	9	5	4	20	7	230	0.0
Bangladesh	108	103	135	152	168	79	93	115	112	96	67	60	1,288	0.2
Bhutan	0	6	4	5	1	7	1	0	3	2	2	1	32	0.0
India	726	775	807	719	828	855	835	991	880	1,035	847	1,127	10,425	1.2
Nepal	38	48	48	63	53	97	45	61	48	74	65	73	713	0.1
Pakistan	74	42	58	77	61	73	53	69	98	49	70	69	793	0.1
Sri Lanka	58	84	85	108	114	87	77	151	116	101	108	111	1,200	0.1
Western Asia	78	65	37	34	41	39	47	54	38	34	48	88	603	0.1
Kazakhstan	71	60	27	25	33	35	39	47	32	23	41	58	491	0.1
Uzbekistan	7	5	10	9	8	4	8	7	6	11	7	30	112	0.0
Oceania	6,509	4,106	5,339	4,907	3,702	4,757	4,485	3,549	4,728	5,021	6,383	8,949	62,435	7.5
Australia	5,829	3,704	4,613	4,153	3,119	4,097	3,807	3,007	4,111	4,344	5,488	7,278	53,550	6.4
Fiji	4	3	7	5	6	13	10	2	6	9	7	7	79	0.0
New Zealand	676	399	719	749	577	647	668	540	611	668	888	1,664	8,806	1.1
Other Asia & the Pacific	140	230	105	63	57	244	66	61	83	72	132	119	1,372	0.2
Europe	16,755	16,593	15,961	11,263	8,870	10,139	13,887	12,769	8,481	12,335	18,582	18,947	164,582	19.7
Northern Europe	4,727	5,048	4,972	3,427	2,960	3,212	3,981	3,221	2,794	3,837	5,462	5,255	48,896	5.8
Denmark	270	244	266	177	123	125	262	128	135	179	236	311	2,456	0.3
Finland	376	347	262	119	89	84	75	92	109	135	208	360	2,256	0.3
Iceland	30	21	19	10	0	105	40	138	41	4	3	8	419	0.1
Ireland	188	196	228	152	182	138	262	142	133	212	288	250	2,371	0.3
Norway	248	307	353	140	98	142	168	91	91	125	306	258	2,327	0.3
Sweden	759	680	385	314	195	226	220	160	205	301	433	642	4,520	0.5
United Kingdom	2,856	3,253	3,459	2,515	2,273	2,392	2,954	2,470	2,080	2,881	3,988	3,426	34,547	4.1
Western Europe	9,464	9,026	8,602	6,117	4,585	5,328	8,292	7,161	4,256	6,422	9,931	10,285	89,469	10.7
Austria	330	226	142	113	76	94	115	109	53	73	178	146	1,655	0.2
Belgium	383	265	422	319	243	292	629	260	258	363	513	604	4,551	0.5
France	5,698	5,285	5,043	3,777	2,723	3,438	5,373	4,909	2,512	3,883	5,896	5,959	54,496	6.5
Germany	1,806	2,129	1,850	1,081	838	811	996	1,139	843	1,240	2,078	1,953	16,764	2.0
Luxembourg	8	21	23	7	4	12	16	13	5	12	24	30	175	0.0
Monaco	2	0	0	11	0	0	0	0	0	0	0	0	13	0.0
Netherlands	633	616	513	432	343	415	705	475	361	498	641	728	6,360	0.8
Switzerland	604	484	609	377	358	266	458	256	224	353	601	865	5,455	0.7
Eastern Europe	1,283	1,241	1,146	773	564	596	481	519	509	962	1,705	1,842	11,621	1.4
Bulgaria	21	14	20	13	16	12	1	16	11	8	14	40	186	0.0
Czech Republic	54	79	79	30	26	30	49	25	62	106	200	130	870	0.1
Estonia	59	48	48	25	12	19	8	14	9	28	52	41	363	0.0
Hungary	51	67	41	24	23	35	34	13	20	32	36	45	421	0.1
Lithuania	10	1	29	9	2	6	4	9	3	2	10	12	97	0.0
Poland	130	220	106	105	65	81	58	58	37	103	396	111	1,470	0.2
Romania	25	35	59	24	26	16	26	17	22	38	64	100	452	0.1
Russian Federation	827	617	664	451	293	291	241	313	292	579	819	1,256	6,643	0.8
Slovakia	34	74	53	44	72	70	40	24	15	35	51	34	546	0.1
Ukraine	72	86	47	48	29	36	20	30	38	31	63	73	573	0.1

International Tourist Arrivals to Phnom Penh International Airport by Country of Residence in 2013
 (by Air only)

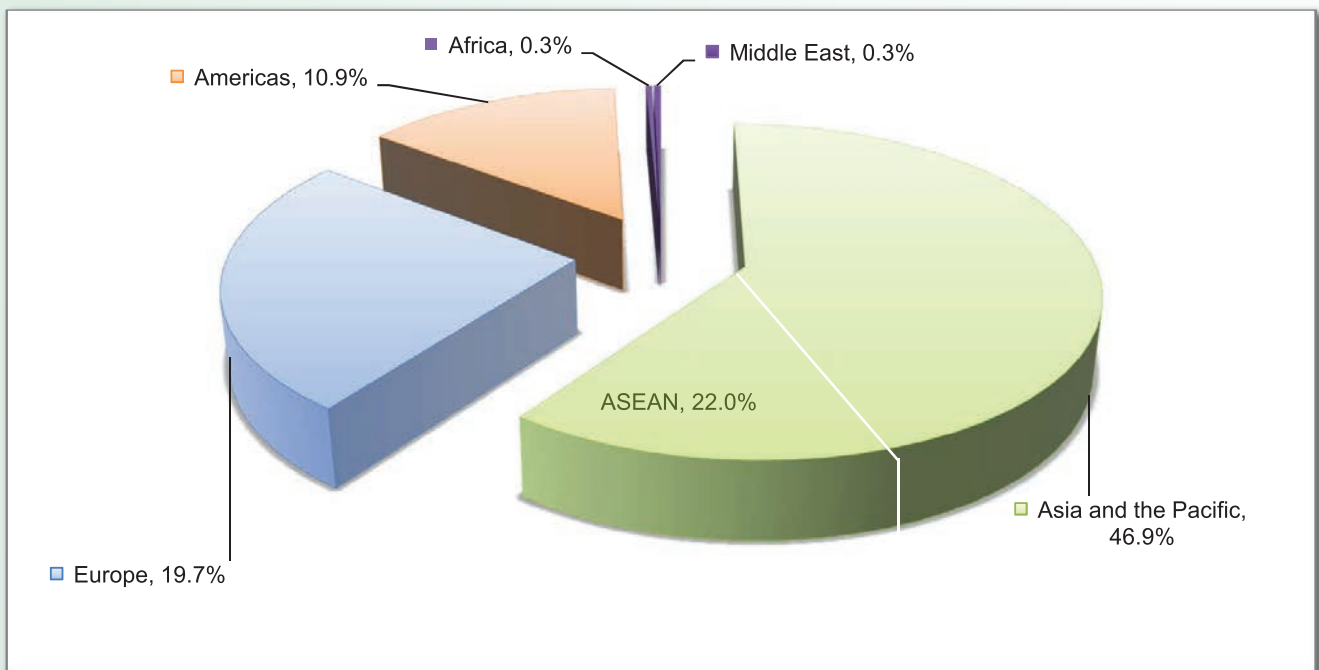
Regions Country of Residence	2013												Total	share (%) 2013*
	Jan	Feb	Mar	Apr	May	Jun	Jul	Aug	Sep	Oct	Nov	Dec		
GRAND TOTAL	72,549	68,988	77,375	62,859	60,880	64,019	68,078	66,865	59,018	67,988	81,430	86,328	836,377	100.0
Southern Europe	1,173	1,092	1,162	899	716	809	1,078	1,816	853	1,060	1,377	1,466	13,501	1.6
Croatia	16	11	11	6	17	8	4	10	7	7	21	25	143	0.0
Greece	19	16	34	32	19	18	15	59	10	24	25	82	353	0.0
Italy	667	687	576	500	300	345	410	874	307	435	795	802	6,698	0.8
Portugal	63	49	63	47	38	80	57	64	38	45	91	99	734	0.1
Serbia	37	20	16	10	11	11	8	7	5	11	7	18	161	0.0
Slovenia	13	7	6	8	1	1	5	5	4	2	5	5	62	0.0
Spain	260	195	306	228	236	246	501	665	391	346	366	332	4,072	0.5
Turkey	98	107	150	68	94	100	78	132	91	190	67	103	1,278	0.2
Other Europe	108	186	79	47	45	194	55	52	69	54	107	99	1,095	0.1
Americas	9,426	8,023	9,854	7,578	7,312	7,449	7,249	5,350	5,047	6,489	8,852	8,609	91,238	10.9
Argentina	57	69	51	35	23	35	29	27	17	24	30	34	431	0.1
Brazil	91	82	63	123	74	48	57	62	43	90	111	78	922	0.1
Canada	1,908	1,742	1,832	1,280	1,290	1,008	1,204	872	775	1,161	2,040	1,606	16,718	2.0
Chile	38	57	32	18	17	74	88	67	10	16	33	26	476	0.1
Colombia	36	17	33	29	20	29	36	15	40	26	14	43	338	0.0
Costa Rica	5	4	3	1	5	4	4	1	2	7	4	6	46	0.0
Ecuador	12	3	2	3	1	8	4	9	3	6	3	26	80	0.0
Mexico	53	27	63	49	38	48	62	34	38	47	36	94	589	0.1
Peru	5	9	22	16	6	12	15	5	13	9	3	12	127	0.0
United States	7,123	5,892	7,682	5,991	5,776	6,030	5,708	4,215	4,046	5,059	6,501	6,587	70,610	8.4
Uruguay	9	3	3	3	30	3	3	2	4	3	2	6	71	0.0
Other Americas	89	118	68	30	32	150	39	41	56	41	75	91	830	0.1
Africa	219	157	194	178	160	261	170	136	157	152	183	254	2,221	0.3
Cameroon	2	6	8	6	1	6	6	1	4	0	2	4	46	0.0
Congo	2	2	0	3	1	11	4	2	2	4	2	2	35	0.0
Ghana	3	4	2	32	4	4	1	2	1	4	1	2	60	0.0
Kenya	11	10	18	9	22	18	16	7	8	8	20	10	157	0.0
Liberia	0	0	3	0	1	2	1	9	0	1	2	8	27	0.0
Nigeria	55	30	32	41	51	53	37	39	48	41	34	22	483	0.1
Sudan	4	4	0	3	1	6	5	2	2	10	4	3	44	0.0
South Africa	106	84	106	75	67	120	85	60	82	74	97	187	1,143	0.1
Uganda	9	1	5	0	2	7	2	1	0	1	14	2	44	0.0
Other Africa	27	16	20	9	10	34	13	13	10	9	7	14	182	0.0
Middle East	167	196	328	167	293	226	132	184	156	204	177	216	2,446	0.3
Egypt	10	8	9	16	29	24	11	8	21	32	9	18	195	0.0
Iran	10	21	22	9	18	8	5	8	3	7	16	8	135	0.0
Iraq	3	2	8	3	3	8	3	8	3	5	4	6	56	0.0
Israel	95	126	217	96	182	73	91	117	93	128	119	141	1,478	0.2
Kuwait	9	4	6	9	8	11	0	5	3	7	12	7	81	0.0
Oman	2	0	1	7	4	24	3	2	2	1	1	4	51	0.0
Palestine	6	1	4	2	20	8	2	16	3	1	2	3	68	0.0
Qatar	4	5	30	0	2	16	2	1	1	3	0	2	66	0.0
Saudi Arabia	7	14	9	10	10	17	1	4	6	4	6	6	94	0.0
United Arab Emirates	0	0	0	0	1	0	0	2	3	3	1	1	11	0.0
Yemen	5	9	7	10	11	15	4	4	11	6	4	9	95	0.0
Other Middle East	16	6	15	5	5	22	10	9	7	7	3	11	116	0.0

Top Ten Generating markets in 2013, tourist arrivals by ranks


Int'l Tourist Arrivals to Phnom Penh International Airport by Regions in 2013

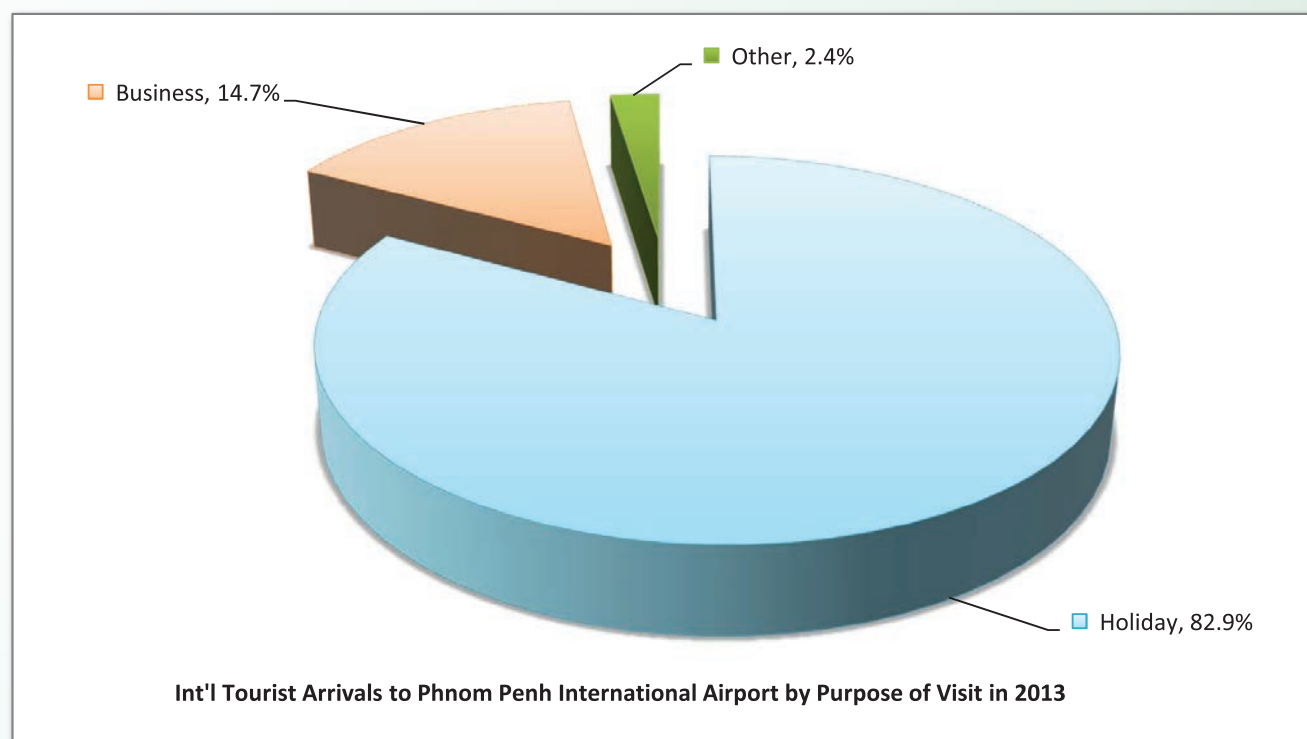
Months	Asia and the Pacific	ASEAN	Europe	Americas	Africa	Middle East	Total
Q1	100,577	40,462	49,309	27,303	570	691	218,912
January	32,357	13,625	16,755	9,426	219	167	72,549
February	32,202	11,817	16,593	8,023	157	196	68,988
March	36,018	15,020	15,961	9,854	194	328	77,375
Q2	87,791	46,071	30,272	22,339	599	686	187,758
April	29,896	13,777	11,263	7,578	178	167	62,859
May	27,886	16,359	8,870	7,312	160	293	60,880
June	30,009	15,935	10,139	7,449	261	226	64,019
Q3	96,084	44,159	35,137	17,646	463	472	193,961
July	32,251	14,389	13,887	7,249	170	132	68,078
August	33,171	15,255	12,769	5,350	136	184	66,865
September	30,662	14,515	8,481	5,047	157	156	59,018
Q4	107,486	53,260	49,864	23,950	589	597	235,746
October	32,409	16,399	12,335	6,489	152	204	67,988
November	35,633	18,003	18,582	8,852	183	177	81,430
December	39,444	18,858	18,947	8,609	254	216	86,328
Total	391,938	183,952	164,582	91,238	2,221	2,446	836,377
share (%)	46.9%	22.0%	19.7%	10.9%	0.3%	0.3%	100.0%

Note: ASEAN 10 countries was include in the Asia and the Pacific.



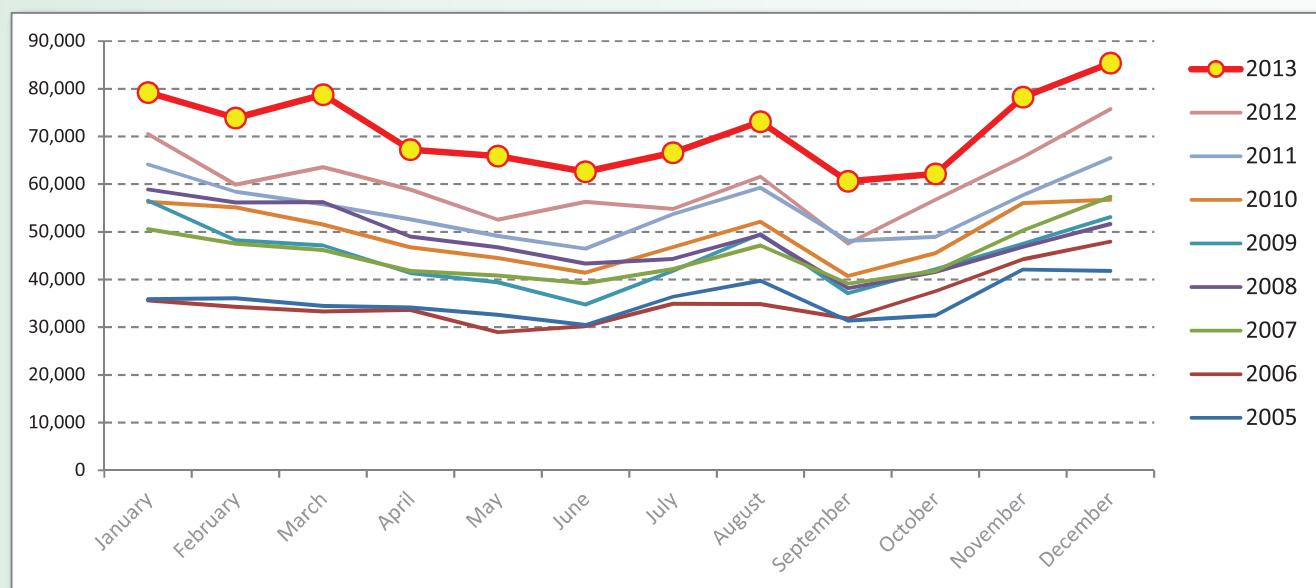
International Tourist Arrivals to Phnom Penh International Airport by Purpose of Visit in 2005 - 2013

Purpose of Visit	Int'l tourist arrivals									change (%) 2013*/12
	2005	2006	2007	2008	2009	2010	2011	2012	2013	
Total	416,396	427,389	535,262	570,903	527,745	591,628	645,233	716,584	836,377	16.7
Holiday	322,035	328,137	423,668	459,340	422,896	477,466	533,776	532,426	693,535	30.3
Business	61,919	74,940	86,751	90,282	81,881	90,302	91,223	107,422	122,773	14.3
Other	32,442	24,312	24,843	21,281	22,968	23,860	20,234	76,736	20,069	-73.8
Q1	103,482	103,203	136,350	164,166	141,496	158,979	170,558	187,408	218,912	16.8
Holiday	82,907	78,486	110,226	133,802	115,850	129,485	142,249	147,940	182,957	23.7
Business	13,629	18,323	20,045	24,736	20,343	23,563	23,277	25,432	31,082	22.2
Other	6,946	6,394	6,079	5,628	5,303	5,931	5,032	14,036	4,873	-65.3
Q2	94,648	92,824	120,202	128,926	112,410	126,012	139,906	155,878	187,758	20.5
Holiday	72,916	68,236	92,732	99,893	86,273	97,701	112,361	111,187	151,740	36.5
Business	14,246	18,632	21,205	23,840	20,356	22,184	22,680	25,356	31,060	22.5
Other	7,486	5,956	6,265	5,193	5,781	6,127	4,865	19,335	4,958	-74.4
Q3	100,750	101,575	124,967	133,508	125,812	136,939	157,529	167,096	193,961	16.1
Holiday	75,690	77,098	96,906	107,264	98,668	109,381	128,916	120,170	158,673	32.0
Business	16,106	18,542	21,833	20,909	21,084	21,635	23,380	27,198	29,990	10.3
Other	8,954	5,935	6,228	5,335	6,060	5,923	5,233	19,728	5,298	-73.1
Q4	117,516	129,787	153,743	144,303	148,027	169,698	177,240	206,202	235,746	14.3
Holiday	90,522	104,317	123,804	118,381	122,105	140,899	150,250	153,129	200,165	30.7
Business	17,938	19,443	23,668	20,797	20,098	22,920	21,886	29,436	30,641	4.1
Other	9,056	6,027	6,271	5,125	5,824	5,879	5,104	23,637	4,940	-79.1



Int'l Tourist Departures from Phnom Penh International Airport by Months in 2005 - 2013

Months	Int'l Tourists Departure									change (%)
	2005	2006	2007	2008	2009	2010	2011	2012	2013	2013*/12
Q1	106,462	103,203	144,282	171,257	151,938	162,931	178,353	193,993	231,907	19.5
January	35,914	35,601	50,577	58,882	56,536	56,288	64,141	70,533	79,240	12.3
February	36,100	34,274	47,524	56,140	48,257	55,117	58,444	59,870	73,885	23.4
March	34,448	33,328	46,181	56,235	47,145	51,526	55,768	63,590	78,782	23.9
Q2	97,210	92,824	121,838	139,102	115,543	132,678	148,240	167,732	195,706	16.7
April	34,146	33,655	41,775	49,002	41,362	46,771	52,650	58,895	67,214	14.1
May	32,590	28,959	40,819	46,736	39,416	44,500	49,130	52,543	65,861	25.3
June	30,474	30,210	39,244	43,364	34,765	41,407	46,460	56,294	62,631	11.3
Q3	107,571	101,575	128,504	131,832	128,455	139,581	161,037	163,927	200,275	22.2
July	36,395	34,908	42,213	44,297	41,831	46,736	53,686	54,794	66,601	21.5
August	39,776	34,841	47,143	49,354	49,540	52,122	59,221	61,592	73,082	18.7
September	31,400	31,826	39,148	38,181	37,084	40,723	48,130	47,541	60,592	27.5
Q4	116,385	129,787	149,451	140,045	142,702	158,314	172,192	198,206	225,834	13.9
October	32,467	37,576	41,821	41,588	42,152	45,539	48,973	56,773	62,155	9.5
November	42,101	44,279	50,276	46,814	47,484	56,030	57,721	65,685	78,275	19.2
December	41,817	47,932	57,354	51,643	53,066	56,745	65,498	75,748	85,404	12.7
Total	427,628	427,389	544,075	582,236	538,638	593,504	659,822	723,858	853,722	17.9



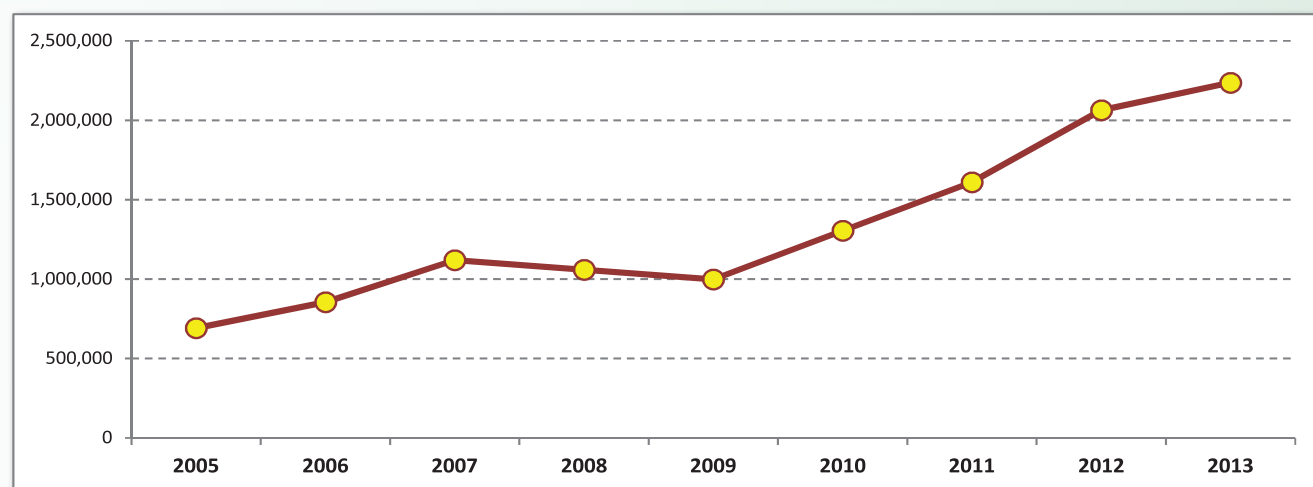
SECTION II

**SIEM REAP INTERNATIONAL
AIRPORT**

International Tourist Arrivals to Siem Reap Angkor by Months in 2005 - 2013

(by all mean of transportations)

Months	2005	2006	2007	2008	2009	2010	2011	2012	2013	Change(%) 2013*/12
Q1	216,151	241,785	399,812	356,390	298,164	366,102	435,972	639,874	694,729	8.6
January	73,702	86,279	185,163	121,975	105,701	122,163	166,354	224,145	248,614	10.9
February	77,466	81,787	111,459	120,657	94,241	126,057	146,593	217,132	231,369	6.6
March	64,983	73,719	103,190	113,758	98,222	117,882	123,025	198,597	214,746	8.1
Q2	129,154	153,575	215,634	222,404	204,864	274,842	348,537	418,783	427,546	2.1
April	52,651	64,765	85,769	91,105	86,465	109,799	129,953	179,778	166,451	-7.4
May	39,860	45,516	68,292	72,447	62,175	89,902	115,153	121,799	135,066	10.9
June	36,643	43,294	61,573	58,852	56,224	75,141	103,431	117,206	126,029	7.5
Q3	154,099	186,740	188,342	209,005	218,202	287,229	382,595	428,556	451,678	5.4
July	48,913	56,421	62,976	65,896	71,282	95,427	122,954	143,464	159,244	11.0
August	63,853	74,365	69,196	78,254	80,220	106,502	140,769	163,502	151,449	-7.4
September	41,333	55,954	56,170	64,855	66,700	85,300	118,872	121,590	140,985	16.0
Q4	192,600	274,057	316,798	272,071	276,854	377,083	442,972	576,123	663,363	15.1
October	54,344	71,086	86,833	79,200	77,553	108,241	122,450	159,067	196,263	23.4
November	67,704	95,058	107,330	95,984	90,472	136,468	148,656	190,614	214,731	12.7
December	70,552	107,913	122,635	96,887	108,829	132,374	171,866	226,442	252,369	11.4
Total	692,004	856,157	1,120,586	1,059,870	998,084	1,305,256	1,610,076	2,063,336	2,237,316	8.4


International Tourist Arrivals to Siem Reap International Airport by Months in 2013

(by Air only)

Months	2008	2009	2010	2011	2012	2013	Change (%)			
							2010/09	2011/10	2012*/11	2013*/12
Q1	237,857	193,717	212,527	256,871	326,348	392,248	9.7	20.9	27.0	20.2
January	81,875	70,489	72,411	93,276	119,543	142,661	2.7	28.8	28.2	19.3
February	80,882	62,994	70,028	87,806	109,026	134,465	11.2	25.4	24.2	23.3
March	75,100	60,234	70,088	75,789	97,779	115,122	16.4	8.1	29.0	17.7
Q2	133,099	108,811	134,855	147,038	181,245	210,297	23.9	9.0	23.3	16.0
April	53,947	46,802	53,678	57,187	72,399	82,489	14.7	6.5	26.6	13.9
May	45,157	34,735	42,411	45,395	56,762	65,375	22.1	7.0	25.0	15.2
June	33,995	27,274	38,766	44,456	52,084	62,433	42.1	14.7	17.2	19.9
Q3	125,682	121,361	151,315	177,756	203,445	234,051	24.7	17.5	14.5	15.0
July	39,449	38,761	48,038	59,467	66,348	76,571	23.9	23.8	11.6	15.4
August	47,692	47,121	58,089	68,484	78,944	87,040	23.3	17.9	15.3	10.3
September	38,541	35,479	45,188	49,805	58,153	70,440	27.4	10.2	16.8	21.1
Q4	171,866	160,095	213,975	253,507	294,461	344,685	33.7	18.5	16.2	17.1
October	50,053	43,647	58,448	65,363	80,471	88,072	33.9	11.8	23.1	9.4
November	58,967	52,545	78,947	88,410	98,245	115,979	50.2	12.0	11.1	18.1
December	62,846	63,903	76,580	99,734	115,745	140,634	19.8	30.2	16.1	21.5
Total	668,504	583,984	712,672	835,172	1,005,499	1,181,281	22.0	17.2	20.4	17.5

International Tourist Arrivals to Siem Reap International Airport by Country of Residence in 2013

(by Air only)

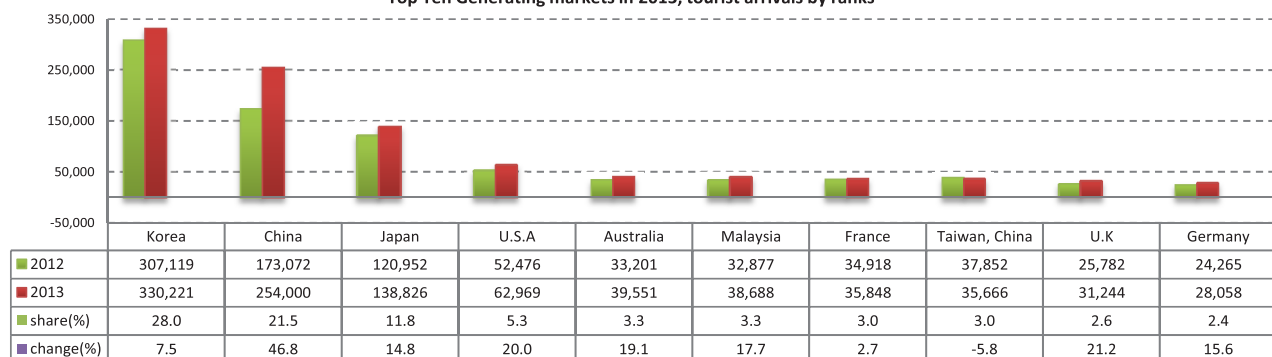
Regions Country of Residence	2013													share (%) 2013*
	Jan	Feb	Mar	Apr	May	Jun	Jul	Aug	Sep	Oct	Nov	Dec	Total	
GRAND TOTAL	142,661	134,465	115,122	82,489	65,375	62,433	76,571	87,040	70,440	88,072	115,979	140,634	1,181,281	100.0
Asia and the Pacific	112,322	105,241	85,914	63,704	52,331	52,368	60,552	69,066	59,009	66,114	81,289	106,506	914,416	77.4
ASEAN	6,167	7,071	8,712	7,863	8,891	8,952	7,285	8,365	7,240	8,730	9,482	10,296	99,054	8.4
Brunei Darussalam	1	4	16	10	18	21	20	6	18	21	64	26	225	0.0
Indonesia	296	194	411	264	328	345	200	410	221	271	288	344	3,572	0.3
Lao PDR	42	101	249	91	78	39	66	78	68	80	84	117	1,093	0.1
Malaysia	2,349	2,334	3,421	2,619	3,732	3,185	2,500	3,644	3,114	3,226	3,963	4,601	38,688	3.3
Myanmar	20	108	45	186	65	112	45	49	72	43	132	115	992	0.1
Philippines	1,548	1,937	2,100	2,364	2,337	1,796	1,625	1,584	1,377	1,560	1,650	1,327	21,205	1.8
Singapore	823	778	1,102	692	1,068	1,578	744	804	1,013	1,129	1,924	1,895	13,550	1.1
Thailand	670	1,096	846	739	793	1,330	998	689	916	1,971	900	1,406	12,354	1.0
Vietnam	418	519	522	898	472	546	1,087	1,101	441	429	477	465	7,375	0.6
Eastern Asia	100,645	94,528	72,988	52,016	40,338	39,554	48,728	57,163	47,418	52,676	66,209	90,007	762,270	64.5
China (RPC)	24,830	36,122	21,443	19,045	13,767	13,686	19,501	20,843	18,609	19,097	21,254	25,803	254,000	21.5
Hong Kong SAR	260	333	343	87	124	122	97	103	102	275	756	902	3,504	0.3
Japan	13,771	12,608	14,076	8,524	6,637	6,727	8,398	15,730	12,176	9,828	14,055	16,296	138,826	11.8
Korea (ROK)	57,691	40,550	34,095	21,622	17,543	16,197	18,110	18,515	14,145	20,997	26,602	44,154	330,221	28.0
Mongolia	12	13	7	1	3	2	4	4	1	1	2	3	53	0.0
Taiwan, China	4,081	4,902	3,024	2,737	2,264	2,820	2,618	1,968	2,385	2,478	3,540	2,849	35,666	3.0
Southern Asia	575	614	592	468	577	544	511	566	529	733	599	1,138	7,446	0.6
Afghanistan	2	0	3	0	0	5	7	5	0	0	4	0	26	0.0
Bangladesh	8	14	21	35	13	5	2	11	11	10	28	5	163	0.0
Bhutan	6	0	5	1	0	0	1	8	1	1	2	5	30	0.0
India	523	570	486	388	525	507	479	488	465	661	531	1,091	6,714	0.6
Nepal	23	1	22	18	7	9	5	15	32	5	9	13	159	0.0
Pakistan	3	9	6	5	13	6	7	17	8	15	5	8	102	0.0
Sri Lanka	10	20	49	21	19	12	10	22	12	41	20	16	252	0.0
Western Asia	31	38	31	18	25	15	22	12	9	14	28	59	302	0.0
Kazakhstan	29	31	30	17	19	10	20	11	5	12	24	48	256	0.0
Uzbekistan	2	7	1	1	6	5	2	1	4	2	4	11	46	0.0
Oceania	4,841	2,929	3,506	3,266	2,450	3,256	3,960	2,909	3,767	3,901	4,934	4,923	44,642	3.8
Australia	4,409	2,691	3,217	2,898	2,071	2,847	3,433	2,605	3,347	3,463	4,253	4,317	39,551	3.3
Fiji	0	3	2	0	1	1	0	2	0	0	1	1	11	0.0
New Zealand	432	235	287	368	378	408	527	302	420	438	680	605	5,080	0.4
Other Asia & the Pacific	63	61	85	73	50	47	46	51	46	60	37	83	702	0.1
Europe	18,836	18,519	19,391	12,524	7,652	5,149	9,952	13,488	6,858	14,065	23,192	21,454	171,080	14.5
Northern Europe	4,414	4,651	4,587	2,783	1,984	1,726	2,871	2,625	1,772	3,424	5,441	5,355	41,633	3.5
Denmark	261	330	165	105	84	53	185	74	59	115	218	278	1,927	0.2
Finland	146	86	67	42	28	20	31	9	23	80	100	175	807	0.1
Iceland	1	0	0	0	0	6	0	0	0	7	15	1	30	0.0
Ireland	183	164	160	127	105	122	229	152	144	188	324	300	2,198	0.2
Norway	341	273	287	90	52	133	255	72	91	208	239	350	2,391	0.2
Sweden	528	453	395	175	91	98	115	63	54	147	319	598	3,036	0.3
United Kingdom	2,954	3,345	3,513	2,244	1,624	1,294	2,056	2,255	1,401	2,679	4,226	3,653	31,244	2.6
Western Europe	9,383	10,087	10,354	6,841	3,684	1,901	4,425	5,099	2,696	6,405	11,964	11,114	83,953	7.1
Austria	402	451	352	173	75	46	146	117	97	208	469	408	2,944	0.2
Belgium	380	497	383	319	141	134	577	295	165	301	676	616	4,484	0.4
France	3,795	4,304	4,455	3,603	1,661	758	1,847	2,891	886	2,414	4,594	4,640	35,848	3.0
Germany	3,129	3,512	3,985	2,013	1,285	579	892	1,052	1,042	2,412	4,450	3,707	28,058	2.4
Luxembourg	14	31	33	30	5	1	8	24	5	20	27	32	230	0.0
Monaco	6	2	2	0	6	5	0	4	12	13	2	0	52	0.0
Netherlands	513	426	484	245	219	222	521	415	231	475	540	767	5,058	0.4
Switzerland	1,144	864	660	458	292	156	434	301	258	562	1,206	944	7,279	0.6
Eastern Europe	3,236	2,107	2,237	1,524	1,013	470	516	695	557	1,430	2,630	2,500	18,915	1.6
Bulgaria	83	36	65	39	24	28	13	30	16	33	93	58	518	0.0
Czech Republic	134	162	185	133	42	38	27	45	30	101	185	152	1,234	0.1
Estonia	61	60	34	9	10	7	4	18	0	52	26	67	348	0.0
Hungary	176	205	233	68	32	26	26	27	30	98	214	138	1,273	0.1
Lithuania	48	91	45	19	7	12	10	10	10	21	150	53	476	0.0
Poland	312	237	217	203	123	40	86	110	70	191	480	252	2,321	0.2
Romania	64	105	57	37	20	11	15	29	33	73	58	90	592	0.1
Russian Federation	1,960	1,109	1,235	812	638	272	278	357	330	673	1,235	1,523	10,422	0.9
Slovakia	116	70	37	125	49	14	16	46	14	36	81	30	634	0.1
Ukraine	282	32	129	79	68	22	41	23	24	152	108	137	1,097	0.1

International Tourist Arrivals to Siem Reap International Airport by Country of Residence in 2013

(by Air only)

Regions Country of Residence	2013													share (%) 2013*
	Jan	Feb	Mar	Apr	May	Jun	Jul	Aug	Sep	Oct	Nov	Dec	Total	
GRAND TOTAL	142,661	134,465	115,122	82,489	65,375	62,433	76,571	87,040	70,440	88,072	115,979	140,634	1,181,281	100.0
Southern Europe	1,754	1,631	2,157	1,323	926	1,013	2,102	5,028	1,807	2,758	3,124	2,415	26,038	2.2
Croatia	26	32	28	8	3	2	4	4	1	2	34	57	201	0.0
Greece	34	16	68	62	53	9	15	92	2	18	28	38	435	0.0
Italy	868	749	827	368	283	213	434	1,465	263	414	972	1,000	7,856	0.7
Portugal	120	141	236	233	71	57	79	251	92	188	290	180	1,938	0.2
Serbia	25	17	0	9	4	4	1	37	3	8	9	14	131	0.0
Slovenia	13	60	28	25	7	32	19	4	2	86	18	41	335	0.0
Spain	488	414	792	545	481	665	1,506	3,133	1,431	1,396	1,621	955	13,427	1.1
Turkey	180	202	178	73	24	31	44	42	13	646	152	130	1,715	0.1
Other Europe	49	43	56	53	45	39	38	41	26	48	33	70	541	0.0
Americas	11,143	10,188	9,448	6,080	5,243	4,794	5,903	4,290	4,296	7,696	11,211	12,165	92,457	7.8
Argentina	566	345	337	290	208	106	61	52	165	156	178	217	2,681	0.2
Brazil	684	479	378	331	277	130	179	170	171	414	417	545	4,175	0.4
Canada	1,703	1,984	1,664	880	742	567	871	617	550	1,144	2,366	1,865	14,953	1.3
Chile	182	361	258	97	134	78	96	59	119	170	114	159	1,827	0.2
Colombia	133	26	74	65	60	108	50	63	70	99	94	139	981	0.1
Costa Rica	57	7	6	22	20	9	17	5	6	12	31	9	201	0.0
Ecuador	10	4	6	5	2	10	11	8	10	10	15	15	106	0.0
Mexico	167	167	348	295	257	209	479	154	274	417	405	481	3,653	0.3
Peru	12	9	14	24	24	33	15	18	47	50	26	33	305	0.0
United States	7,584	6,755	6,312	3,979	3,435	3,508	4,097	3,110	2,841	5,174	7,527	8,647	62,969	5.3
Uruguay	10	20	6	56	47	20	3	1	22	9	13	5	212	0.0
Other Americas	35	31	45	36	37	16	24	33	21	41	25	50	394	0.0
Africa	111	148	106	98	79	75	55	72	73	101	108	261	1,287	0.1
Cameroon	1	1	0	1	0	0	1	0	0	0	1	1	6	0.0
Congo	0	1	2	0	0	0	0	0	0	0	0	0	3	0.0
Ghana	0	2	0	1	0	1	0	6	1	0	1	1	13	0.0
Kenya	2	12	9	6	7	9	10	7	7	2	7	34	112	0.0
Liberia	0	0	0	0	0	0	0	1	0	0	0	0	1	0.0
Nigeria	2	5	2	3	2	4	3	5	1	5	5	2	39	0.0
Sudan	1	1	1	0	1	3	0	0	0	3	1	1	12	0.0
South Africa	95	123	89	83	63	51	38	52	62	86	85	203	1,030	0.1
Uganda	0	0	0	0	0	2	0	0	0	0	0	3	5	0.0
Other Africa	10	3	3	4	6	5	3	1	2	5	8	16	66	0.0
Middle East	249	369	263	83	70	47	109	124	204	96	179	248	2,041	0.2
Egypt	1	7	0	4	3	4	9	3	3	11	7	8	60	0.0
Iran	4	8	12	4	14	0	6	10	8	3	3	7	79	0.0
Iraq	1	1	1	0	1	3	2	1	2	1	1	0	14	0.0
Israel	233	340	235	62	37	33	81	92	186	69	147	212	1,727	0.1
Kuwait	3	1	8	0	0	0	0	5	1	6	1	1	26	0.0
Oman	2	0	2	0	7	0	0	4	0	0	4	3	22	0.0
Palestine	0	2	2	1	0	0	0	0	0	1	1	0	7	0.0
Qatar	0	0	0	0	0	2	0	0	0	0	0	2	4	0.0
Saudi Arabia	1	8	1	4	0	2	2	0	0	0	6	5	29	0.0
United Arab Emirates	0	0	0	1	0	1	0	2	0	2	1	0	7	0.0
Yemen	0	0	0	4	4	0	6	4	3	0	3	1	25	0.0
Other Middle East	4	2	2	3	4	2	3	3	1	3	5	9	41	0.0

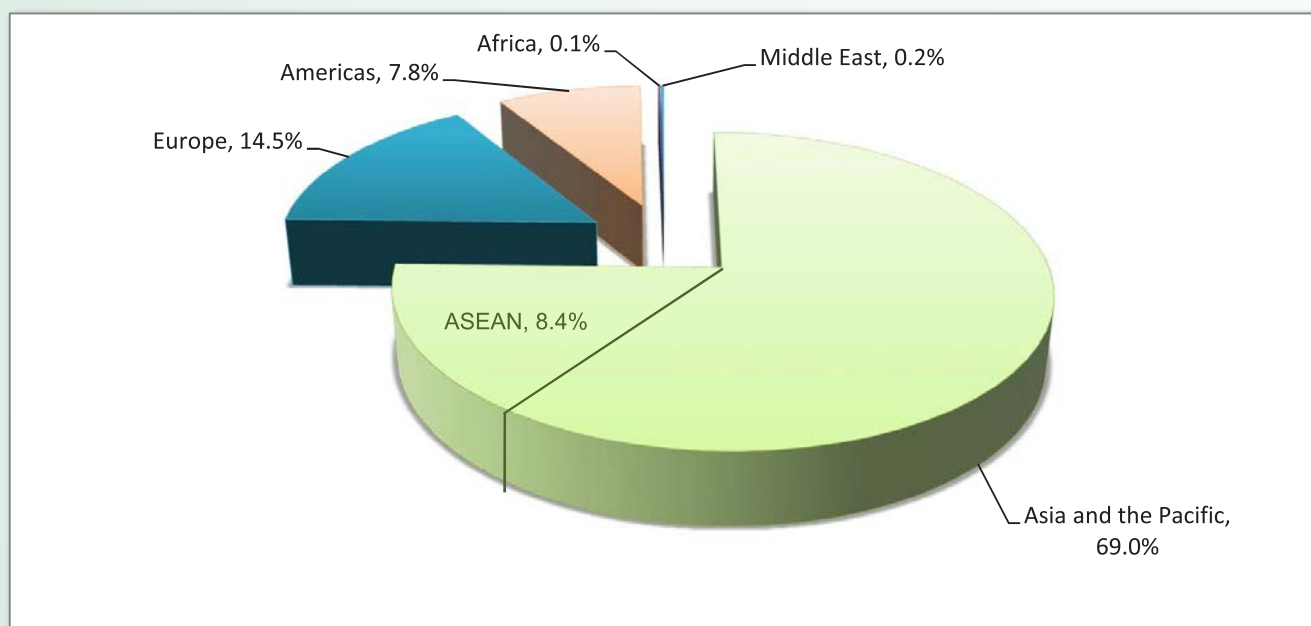
Top Ten Generating markets in 2013, tourist arrivals by ranks



International Tourist arrivals to Siem Reap International Airport by Regions in 2013

Months	Asia and the Pacific	ASEAN	Europe	Americas	Africa	Middle East	Total
Q1	281,527	21,950	56,746	30,779	365	881	392,248
January	106,155	6,167	18,836	11,143	111	249	142,661
February	98,170	7,071	18,519	10,188	148	369	134,465
March	77,202	8,712	19,391	9,448	106	263	115,122
Q2	142,697	25,706	25,325	16,117	252	200	210,297
April	55,841	7,863	12,524	6,080	98	83	82,489
May	43,440	8,891	7,652	5,243	79	70	65,375
June	43,416	8,952	5,149	4,794	75	47	62,433
Q3	165,737	22,890	30,298	14,489	200	437	234,051
July	53,267	7,285	9,952	5,903	55	109	76,571
August	60,701	8,365	13,488	4,290	72	124	87,040
September	51,769	7,240	6,858	4,296	73	204	70,440
Q4	225,401	28,508	58,711	31,072	470	523	344,685
October	57,384	8,730	14,065	7,696	101	96	88,072
November	71,807	9,482	23,192	11,211	108	179	115,979
December	96,210	10,296	21,454	12,165	261	248	140,634
Total	815,362	99,054	171,080	92,457	1,287	2,041	1,181,281
share (%)	69.0%	8.4%	14.5%	7.8%	0.1%	0.2%	100.0%

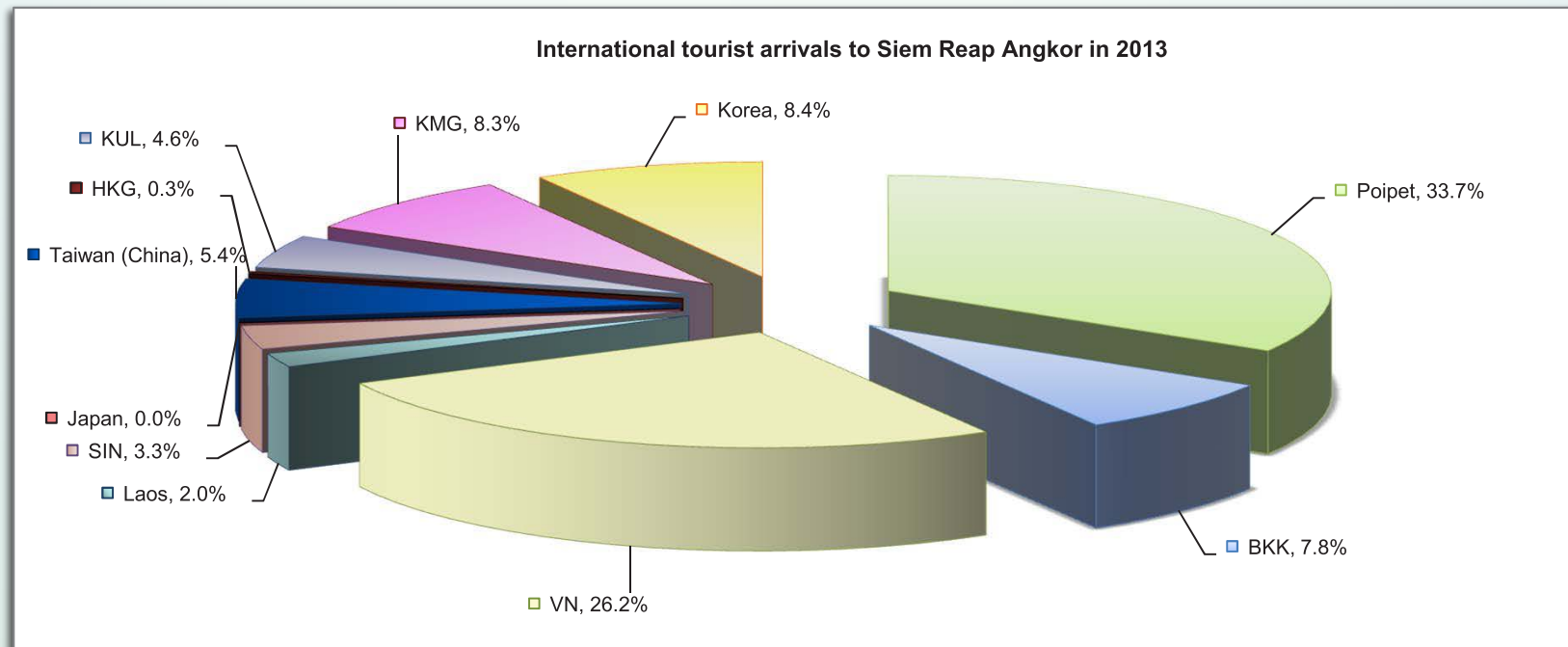
Note: ASEAN 10 countries was include in the Asia and the Pacific.



International Tourist Arrivals to Siem Reap Angkor by Mode of Transport in 2013

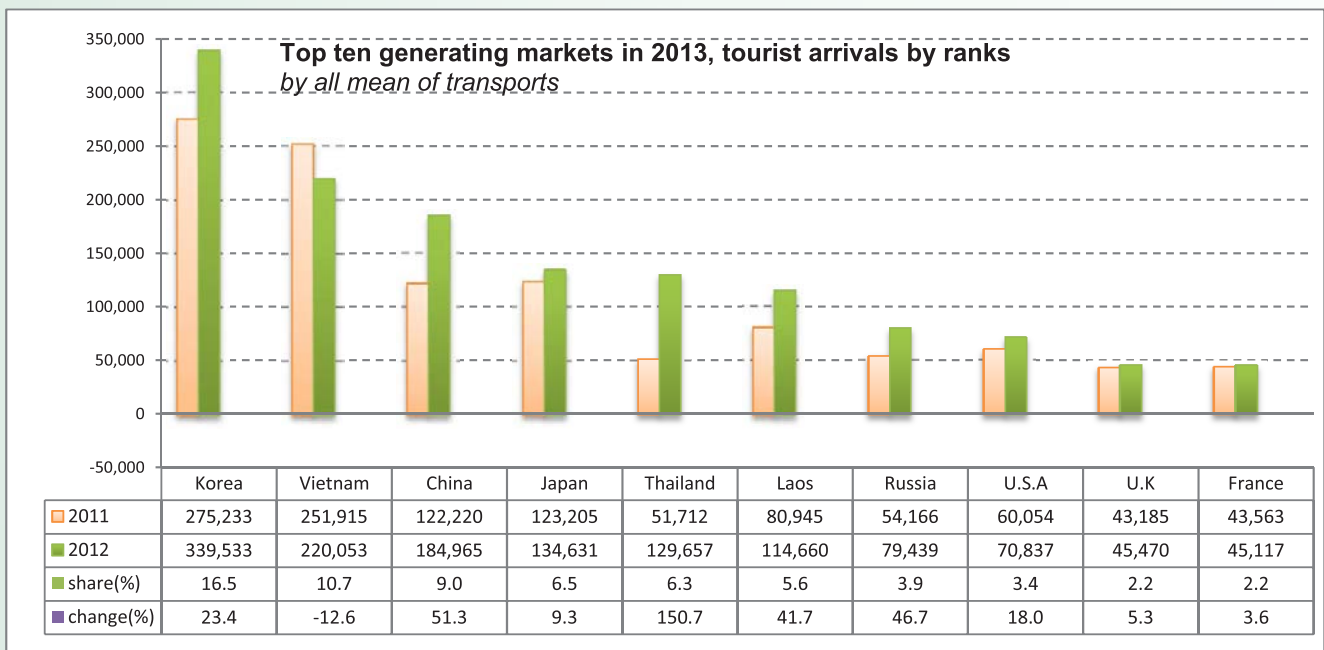
(by all mean of transports)

Months	2012		2013													change	
	Total	Poipet	Direct flight													(%)	
			BKK	VN	Laos	SIN	Japan	Taiwan (China)	HKG	KUL	KMG	Korea	GER	PHL	MYN	Total	2013*/12
Jan	137,106	63,994	13,509	52,866	4,439	5,082	792	6,318		6,135	24,025	27,164	207	2,071	53	206,655	50.7
Feb	123,162	56,592	13,380	45,768	4,200	4,756	0	10,341		6,552	25,732	21,500	218	1,837	181	191,057	55.1
Mar	106,980	57,058	11,607	47,778	3,674	5,566	0	9,672		7,814	11,143	15,132	464	2,146	126	172,180	60.9
Apr	88,061	42,630	8,027	35,305	2,043	4,239	0	7,690		6,447	8,540	7,728	11	2,319	140	125,119	42.1
May	72,459	41,315	6,591	25,658	1,530	3,963	0	6,369		6,873	5,479	6,646	0	2,189	77	106,690	47.2
Jun	72,978	36,160	6,428	24,195	1,070	4,658	0	5,856		6,197	5,548	6,551	0	1,930	0	98,593	35.1
Jul	93,800	50,406	8,912	30,989	2,306	4,321	0	5,970		6,326	9,149	6,787	0	1,811	0	126,977	35.4
Aug	105,145	23,072	10,303	37,479	2,440	4,421	0	6,780		6,342	9,740	7,896	0	1,639	0	110,112	4.7
Sep	85,291	37,512	7,111	27,958	1,344	4,104	0	6,972		6,043	8,673	6,670	0	1,565	0	107,952	26.6
Oct	97,670	71,564	12,348	33,171	2,194	5,158	0	8,575	0	6,112	10,199	8,566	0	1,741	8	159,636	63.4
Nov	119,506	50,087	17,612	45,950	5,125	4,094	0	9,445	2,726	7,455	11,801	10,002	0	1,521	248	166,066	39.0
Dec	144,637	58,105	20,382	50,381	3,946	7,165	0	10,217	2,679	8,002	14,786	21,385	0	1,471	220	198,739	37.4
Total	1,246,795	588,495	136,210	457,498	34,311	57,527	792	94,205	5,405	80,298	144,815	146,027	900	22,240	1,053	1,769,776	41.9



International Tourist Arrivals to Siem Reap International Airport by Purpose of Visit in 2006 - 2013

Purpose of Visit	Int'l tourist arrivals								change (%)
	2006	2007	2008	2009	2010	2011	2012	2013	2013*/12
Total	599,675	761,251	668,504	583,984	712,672	835,172	1,005,499	1,181,281	17.5
Holiday	591,474	751,537	656,776	574,571	704,254	826,441	983,389	1,170,158	19.0
Business	2,778	5,699	7,063	4,720	4,658	5,316	6,929	7,385	6.6
Other	5,423	4,015	4,665	4,693	3,760	3,415	15,181	3,738	-75.4
Q1	172,188	237,244	237,857	193,717	212,527	256,871	326,348	392,248	20.2
Holiday	169,285	235,542	234,498	191,123	210,483	254,826	322,604	389,432	20.7
Business	612	940	2,036	1,533	1,111	1,296	1,672	1,959	17.2
Other	2,291	762	1,323	1,061	933	749	2,072	857	-58.6
Q2	109,623	155,423	133,099	108,811	134,855	147,038	181,245	210,297	16.0
Holiday	108,051	153,170	130,453	106,707	132,877	144,934	176,445	207,738	17.7
Business	740	1,495	1,741	1,079	1,222	1,187	1,682	1,719	2.2
Other	832	758	905	1,025	756	917	3,118	840	-73.1
Q3	122,627	153,556	125,682	121,361	151,315	177,756	203,445	234,051	15.0
Holiday	120,921	150,950	123,302	119,398	149,214	175,669	197,682	231,376	17.0
Business	758	1,691	1,526	978	1,123	1,308	1,729	1,864	7.8
Other	948	915	854	985	978	779	4,034	811	-79.9
Q4	195,237	215,028	171,866	160,095	213,975	253,507	294,461	344,685	17.1
Holiday	193,217	211,875	168,523	157,343	211,680	251,012	286,658	341,612	19.2
Business	668	1,573	1,760	1,130	1,202	1,525	1,846	1,843	-0.2
Other	1,352	1,580	1,583	1,622	1,093	970	5,957	1,230	-79.4

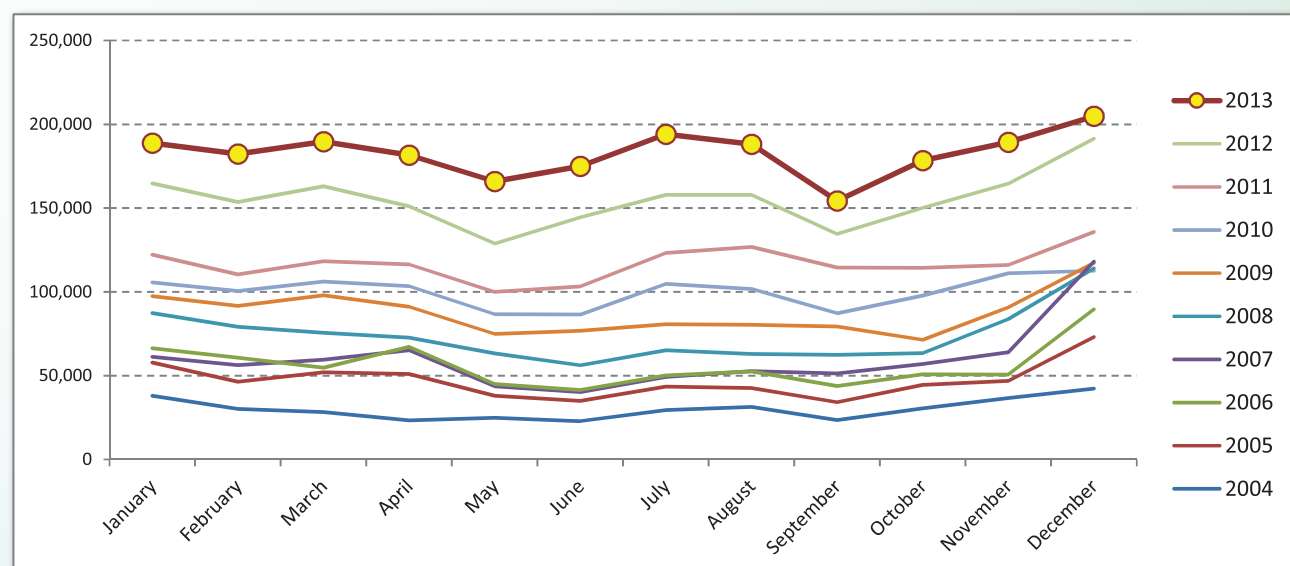
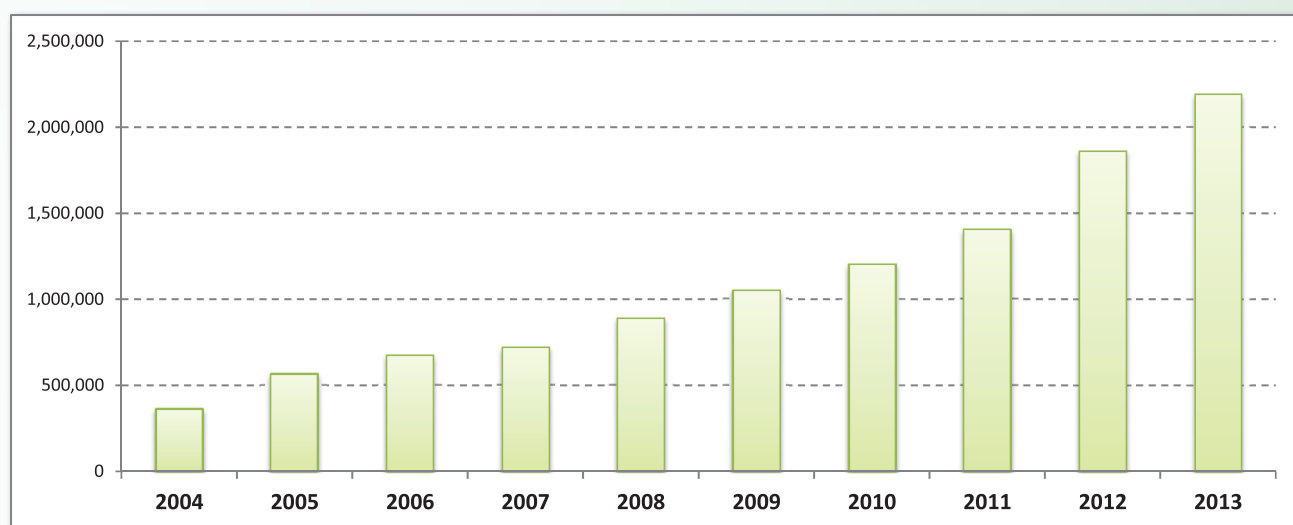


SECTION III

**INTERNATIONAL BORDER CHECK
POINTS**

International Tourist Arrivals to Cambodia by Land and Water ways in 2004 - 2013

Months	2004	2005	2006	2007	2008	2009	2010	2011	2012	2013	change(%) 2013*/12
Q1	96,499	156,263	181,914	177,219	242,182	287,075	312,186	351,038	481,454	560,912	16.5
January	37,969	57,895	66,335	61,309	87,370	97,453	105,595	122,290	164,758	188,896	14.7
February	30,188	46,414	60,758	56,296	79,166	91,667	100,459	110,491	153,722	182,307	18.6
March	28,342	51,954	54,821	59,614	75,646	97,955	106,132	118,257	162,974	189,709	16.4
Q2	70,997	123,980	153,640	148,911	192,006	243,009	276,597	319,618	424,319	522,472	23.1
April	23,345	51,007	67,183	65,234	72,598	91,170	103,490	116,367	151,022	181,652	20.3
May	24,812	37,973	45,007	43,567	63,211	74,979	86,622	99,989	128,822	165,860	28.8
June	22,840	35,000	41,450	40,110	56,197	76,860	86,485	103,262	144,475	174,960	21.1
Q3	84,257	120,384	146,418	153,292	190,503	240,249	293,770	364,473	450,347	536,600	19.2
July	29,521	43,496	50,092	49,312	65,207	80,700	104,792	123,185	157,877	194,112	23.0
August	31,316	42,679	52,546	52,732	62,914	80,283	101,777	126,763	157,899	188,159	19.2
September	23,420	34,209	43,780	51,248	62,382	79,266	87,201	114,525	134,571	154,329	14.7
Q4	109,485	164,467	191,005	239,193	261,367	279,515	321,436	366,326	506,104	572,523	13.1
October	30,476	44,475	50,798	57,039	63,543	71,434	97,714	114,368	150,051	178,350	18.9
November	36,709	46,946	50,587	64,016	83,758	90,844	111,142	116,124	164,649	189,328	15.0
December	42,300	73,046	89,620	118,138	114,066	117,237	112,580	135,834	191,404	204,845	7.0
Total	361,238	565,094	672,977	718,615	886,058	1,049,848	1,203,989	1,401,455	1,862,224	2,192,507	17.7



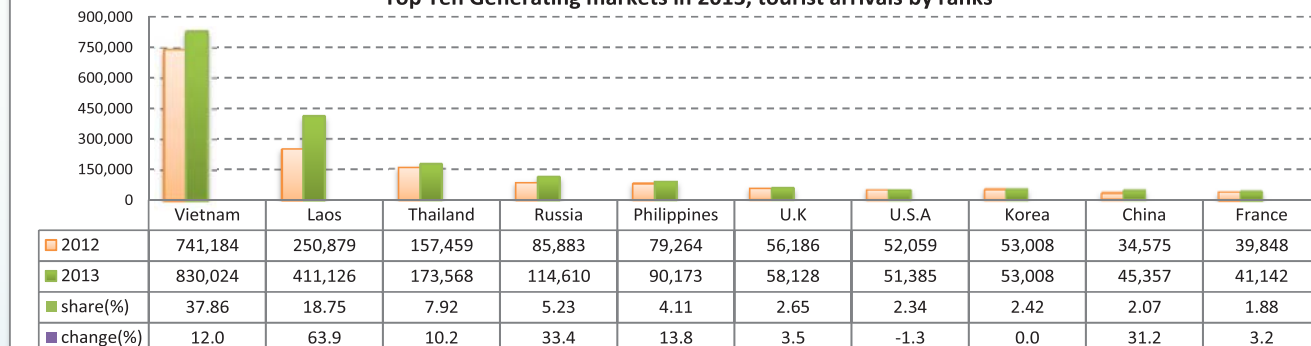
Int'l Tourist Arrivals to Cambodia by Land and Waterways by Country of Residence in 2013 (by Land and waterway)

Regions Country of Residence	2013												Total	share (%) 2013*
	Jan	Feb	Mar	Apr	May	Jun	Jul	Aug	Sep	Oct	Nov	Dec		
GRAND TOTAL	188,896	182,307	189,709	181,652	165,860	174,960	194,112	188,159	154,329	178,350	189,328	204,845	2,192,507	100.0
Asia and the Pacific	128,076	128,761	143,663	148,794	140,791	153,012	160,911	156,048	135,218	147,048	143,534	155,730	1,741,586	79.4
ASEAN	106,210	111,380	126,812	133,515	127,297	140,379	145,780	140,850	120,000	131,185	128,031	137,062	1,548,501	70.6
Brunei Darussalam	5	2	0	3	3	1	6	1	7	4	2	96	130	0.0
Indonesia	1,232	1,056	1,292	1,502	1,248	1,344	1,537	1,496	1,282	1,513	1,497	1,669	16,668	0.8
Lao PDR	28,629	29,704	33,417	21,076	32,105	37,000	38,252	40,968	38,915	36,120	36,957	37,983	411,126	18.8
Malaysia	1,310	1,330	1,546	1,348	1,391	1,402	1,506	1,479	1,183	1,458	1,655	2,065	17,673	0.8
Myanmar	174	122	134	306	136	400	160	106	92	78	92	109	1,909	0.1
Philippines	5,952	6,082	6,860	7,279	8,030	8,126	7,372	7,954	7,409	8,405	8,409	8,295	90,173	4.1
Singapore	630	534	598	520	642	665	572	547	540	601	647	734	7,230	0.3
Thailand	15,056	15,617	16,135	16,855	13,568	10,894	14,714	14,309	12,491	17,395	10,846	15,688	173,568	7.9
Vietnam	53,222	56,933	66,830	84,626	70,174	80,547	81,661	73,990	58,081	65,611	67,926	70,423	830,024	37.9
Eastern Asia	13,701	12,379	13,039	11,258	8,792	9,104	11,080	11,839	10,074	11,132	11,241	12,248	135,887	6.2
China (RPC)	3,589	3,941	3,822	4,589	2,995	3,151	3,765	3,826	2,850	3,953	4,293	4,583	45,357	2.1
Hong Kong SAR	337	216	850	306	316	290	225	297	347	715	573	600	5,072	0.2
Japan	1,866	2,630	3,058	1,774	1,514	1,554	1,684	2,939	2,762	1,431	1,452	1,841	24,505	1.1
Korea (ROK)	6,914	4,908	4,346	3,458	3,116	3,268	4,338	3,781	3,293	4,086	3,898	4,314	49,720	2.3
Mongolia	21	18	28	12	1	3	18	4	6	5	3	5	124	0.0
Taiwan, China	974	666	935	1,119	850	838	1,050	992	816	942	1,022	905	11,109	0.5
Southern Asia	698	472	518	502	601	800	625	690	585	792	678	822	7,783	0.4
Afghanistan	4	1	1	0	1	1	4	0	4	1	0	0	17	0.0
Bangladesh	12	18	5	8	13	17	17	23	8	17	10	12	160	0.0
Bhutan	4	5	2	1	0	1	3	4	7	0	1	11	39	0.0
India	570	385	435	424	480	707	523	588	474	641	550	694	6,471	0.3
Nepal	71	40	50	27	60	52	48	37	35	78	64	41	603	0.0
Pakistan	16	8	12	20	30	10	21	19	42	31	36	40	285	0.0
Sri Lanka	21	15	13	22	17	12	9	19	15	24	17	24	208	0.0
Western Asia	377	353	298	157	52	76	146	110	77	142	207	225	2,220	0.1
Kazakhstan	337	315	233	105	27	42	113	73	55	111	166	187	1,764	0.1
Uzbekistan	40	38	65	52	25	34	33	37	22	31	41	38	456	0.0
Oceania	6,986	3,819	2,743	3,194	3,961	2,575	3,247	2,484	4,427	3,621	3,231	5,347	45,635	2.1
Australia	5,884	3,345	2,368	2,644	3,531	2,121	2,737	2,023	3,942	3,080	2,685	4,567	38,927	1.8
Fiji	5	2	0	0	2	0	0	1	0	3	0	4	17	0.0
New Zealand	1,097	472	375	550	428	454	510	460	485	538	546	776	6,691	0.3
Other Asia & the Pacific	104	358	253	168	88	78	33	75	55	176	146	26	1,560	0.1
Europe	49,239	42,498	37,297	25,331	18,981	15,999	26,578	26,889	15,154	25,062	39,165	40,302	362,495	16.5
Northern Europe	11,591	10,409	8,455	6,566	5,347	5,392	8,255	6,351	3,864	6,058	7,314	7,932	87,534	4.0
Denmark	864	945	780	499	374	254	597	269	177	312	514	517	6,102	0.3
Finland	720	556	451	217	193	115	158	75	289	163	230	501	3,668	0.2
Iceland	57	29	37	46	34	34	18	5	12	20	20	27	339	0.0
Ireland	602	534	406	355	328	492	827	492	267	461	509	403	5,676	0.3
Norway	693	665	661	334	191	236	427	204	199	301	440	413	4,764	0.2
Sweden	1,901	1,451	1,024	659	312	259	462	202	161	404	773	1,249	8,857	0.4
United Kingdom	6,754	6,229	5,096	4,456	3,915	4,002	5,766	5,104	2,759	4,397	4,828	4,822	58,128	2.7
Western Europe	14,928	13,472	11,995	7,647	6,009	4,549	10,135	10,413	4,567	6,771	11,793	11,733	114,012	5.2
Austria	808	661	498	204	153	96	276	383	198	262	454	499	4,492	0.2
Belgium	782	811	722	559	295	284	935	568	278	479	702	721	7,136	0.3
France	4,578	4,607	4,085	2,806	2,316	1,779	4,267	4,841	1,338	2,345	4,195	3,985	41,142	1.9
Germany	5,411	4,621	4,330	2,416	1,807	1,299	1,923	2,543	1,933	2,328	4,067	4,065	36,743	1.7
Luxembourg	17	15	30	4	10	3	14	25	5	3	20	20	166	0.0
Monaco	0	2	2	8	0	1	16	8	1	0	0	0	38	0.0
Netherlands	2,078	1,698	1,547	1,161	1,071	840	2,190	1,560	594	910	1,491	1,518	16,658	0.8
Switzerland	1,254	1,057	781	489	357	247	514	485	220	444	864	925	7,637	0.3
Eastern Europe	19,433	15,809	14,730	9,721	6,591	5,081	6,047	5,666	5,516	10,619	17,447	18,256	134,916	6.2
Bulgaria	20	28	16	21	3	19	7	3	9	31	65	35	257	0.0
Czech Republic	485	514	387	166	81	60	132	116	45	101	353	301	2,741	0.1
Estonia	105	96	85	47	13	12	13	17	40	14	89	124	655	0.0
Hungary	281	267	124	60	59	31	51	64	35	71	103	107	1,253	0.1
Lithuania	177	179	207	52	46	22	27	15	26	81	109	94	1,035	0.0
Poland	1,258	1,357	1,139	515	337	202	319	283	282	576	1,571	877	8,716	0.4
Romania	84	54	39	21	13	22	25	26	20	55	69	54	482	0.0
Russian Federation	16,078	12,586	12,202	8,490	5,852	4,563	5,295	4,994	4,899	9,359	14,403	15,889	114,610	5.2
Slovakia	142	131	127	72	57	31	52	19	24	37	131	95	918	0.0
Ukraine	803	597	404	277	130	119	126	129	136	294	554	680	4,249	0.2

Int'l Tourist Arrivals to Cambodia by Land and Waterways by Country of Residence in 2013 (by Land and waterway)

Regions Country of Residence	2013												Total	share (%) 2013*
	Jan	Feb	Mar	Apr	May	Jun	Jul	Aug	Sep	Oct	Nov	Dec		
GRAND TOTAL	188,896	182,307	189,709	181,652	165,860	174,960	194,112	188,159	154,329	178,350	189,328	204,845	2,192,507	100.0
Southern Europe	3,177	2,445	1,896	1,239	957	902	2,129	4,406	1,155	1,445	2,473	2,330	24,554	1.1
Croatia	88	44	48	28	15	19	25	28	16	32	50	61	454	0.0
Greece	57	55	35	19	21	22	16	30	15	14	20	43	347	0.0
Italy	1,622	1,221	849	579	384	333	653	1,915	289	466	1,211	1,120	10,642	0.5
Portugal	139	118	127	79	61	73	128	222	75	97	141	155	1,415	0.1
Serbia	37	34	25	34	22	7	19	18	14	18	52	41	321	0.0
Slovenia	266	65	32	22	31	32	60	32	29	61	59	135	824	0.0
Spain	703	708	626	358	324	331	1,117	2,028	625	643	828	582	8,873	0.4
Turkey	265	200	154	120	99	85	111	133	92	114	112	193	1,678	0.1
Other Europe	110	363	221	158	77	75	12	53	52	169	138	51	1,479	0.1
Americas	10,343	9,994	7,887	6,937	5,662	5,365	6,080	4,582	3,312	5,673	5,920	7,725	79,480	3.6
Argentina	560	330	349	267	173	91	130	150	71	128	187	215	2,651	0.1
Brazil	251	174	136	146	120	129	138	93	94	123	134	225	1,763	0.1
Canada	2,808	2,791	2,221	1,461	1,437	1,118	1,328	931	580	1,184	1,482	1,855	19,196	0.9
Chile	175	313	175	92	153	106	125	121	98	88	111	109	1,666	0.1
Colombia	59	33	24	35	26	33	76	38	31	35	38	56	484	0.0
Costa Rica	2	3	1	11	4	4	6	7	3	9	3	5	58	0.0
Ecuador	6	24	14	4	1	6	8	3	0	4	10	17	97	0.0
Mexico	54	79	48	59	46	51	98	73	38	76	38	64	724	0.0
Peru	15	17	43	35	21	14	14	22	8	20	22	14	245	0.0
United States	6,333	6,161	4,753	4,685	3,405	3,738	4,124	3,098	2,333	3,841	3,766	5,148	51,385	2.3
Uruguay	22	9	9	53	202	2	8	2	1	4	20	3	335	0.0
Other Americas	58	60	114	89	74	73	25	44	55	161	109	14	876	0.0
Africa	281	214	200	194	144	161	172	160	140	179	163	386	2,394	0.1
Cameroon	15	6	3	4	6	7	6	7	9	9	10	13	95	0.0
Congo	2	1	2	1	1	0	2	0	2	4	1	4	20	0.0
Ghana	27	4	1	17	3	0	0	4	0	1	1	3	61	0.0
Kenya	2	6	5	0	1	3	3	0	0	5	0	4	29	0.0
Liberia	3	2	3	10	0	0	0	3	0	2	0	0	23	0.0
Nigeria	4	13	5	3	6	6	9	7	5	12	6	7	83	0.0
Sudan	1	0	0	0	1	0	0	0	0	0	2	0	4	0.0
South Africa	201	167	156	141	86	121	143	128	117	133	131	346	1,870	0.1
Uganda	0	2	2	4	1	3	2	0	1	1	1	0	17	0.0
Other Africa	26	13	23	14	39	21	7	11	6	12	11	9	192	0.0
Middle East	957	840	662	396	282	423	371	480	505	388	546	702	6,552	0.3
Egypt	10	5	10	3	12	3	6	6	4	4	9	2	74	0.0
Iran	46	40	39	37	26	30	43	40	37	25	37	41	441	0.0
Iraq	2	5	14	6	17	4	6	4	0	0	6	0	64	0.0
Israel	762	640	494	261	99	174	249	264	358	213	390	575	4,479	0.2
Kuwait	91	124	59	51	84	150	39	96	80	108	70	62	1,014	0.0
Oman	8	14	11	9	5	27	11	13	8	7	9	4	126	0.0
Palestine	1	0	3	6	1	2	2	1	0	2	0	1	19	0.0
Qatar	4	1	6	1	2	4	0	2	5	0	0	0	25	0.0
Saudi Arabia	1	0	0	2	8	0	0	4	4	2	5	1	27	0.0
United Arab Emirates	11	3	12	12	8	15	7	41	4	2	6	7	128	0.0
Yemen	1	0	2	0	1	3	0	0	0	13	1	3	24	0.0
Other Middle East	20	8	12	8	19	11	8	9	5	12	13	6	131	0.0

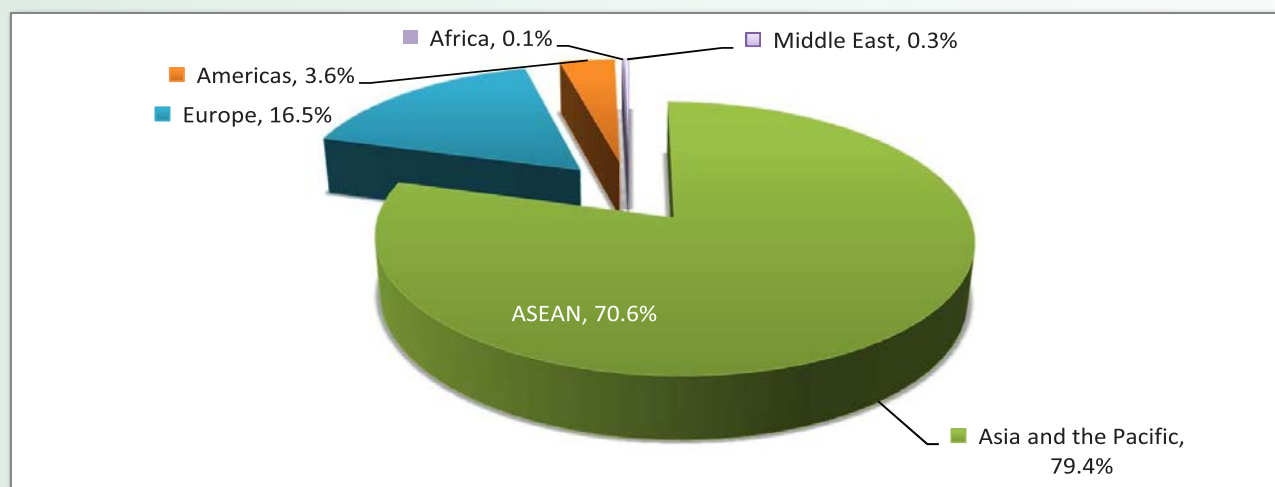
Top Ten Generating markets in 2013, tourist arrivals by ranks



International Tourist Arrivals to Cambodia by Land and Water ways by Regions in 2013

Months	Asia and the Pacific	ASEAN	Europe	Americas	Africa	Middle East	Total
Q1	400,500	344,402	129,034	28,224	695	2,459	560,912
January	128,076	106,210	49,239	10,343	281	957	188,896
February	128,761	111,380	42,498	9,994	214	840	182,307
March	143,663	126,812	37,297	7,887	200	662	189,709
Q2	442,597	401,191	60,311	17,964	499	1,101	522,472
April	148,794	133,515	25,331	6,937	194	396	181,652
May	140,791	127,297	18,981	5,662	144	282	165,860
June	153,012	140,379	15,999	5,365	161	423	174,960
Q3	452,177	406,630	68,621	13,974	472	1,356	536,600
July	160,911	145,780	26,578	6,080	172	371	194,112
August	156,048	140,850	26,889	4,582	160	480	188,159
September	135,218	120,000	15,154	3,312	140	505	154,329
Q4	446,312	396,278	104,529	19,318	728	1,636	572,523
October	147,048	131,185	25,062	5,673	179	388	178,350
November	143,534	128,031	39,165	5,920	163	546	189,328
December	155,730	137,062	40,302	7,725	386	702	204,845
Total	1,741,586	1,548,501	362,495	79,480	2,394	6,552	2,192,507
share (%)	79.4%	70.6%	16.5%	3.6%	0.1%	0.3%	100.0%

Note: ASEAN 10 countries was include in the Asia and the Pacific.



International Tourist Arrivals to Cambodia by Land and Water ways by Purpose of Visit in 2005 - 2013

Purpose of Visit	Int'l tourist arrivals										change (%) 2013*/12
	2005	2006	2007	2008	2009	2010	2011	2012	2013		
Total	565,094	672,977	718,615	886,058	1,049,848	1,203,989	1,401,455	1,862,224	2,192,507	17.7	
Holiday	460,355	635,196	657,332	816,218	994,433	1,148,858	1,346,524	1,771,277	2,128,206	20.2	
Business	22,409	31,584	53,324	61,431	46,179	45,987	46,846	53,364	55,426	3.9	
Other	82,330	6,197	7,959	8,409	9,236	9,144	8,085	37,583	8,875	-76.4	
Q1	156,263	181,914	177,219	242,182	287,075	312,186	351,038	481,454	560,912	16.5	
Holiday	123,851	174,201	165,879	225,121	273,078	298,831	338,057	455,413	546,558	20.0	
Business	4,790	6,451	9,596	14,938	11,834	11,257	11,032	10,747	12,264	14.1	
Other	27,622	1,262	1,744	2,123	2,163	2,098	1,949	15,294	2,090	-86.3	
Q2	123,980	153,640	148,911	192,006	243,009	276,597	319,618	424,319	522,472	23.1	
Holiday	96,612	144,742	134,657	173,996	228,833	262,426	304,828	402,093	505,229	25.6	
Business	5,254	7,320	12,108	15,769	11,697	11,797	12,581	13,812	14,447	4.6	
Other	22,114	1,578	2,146	2,241	2,479	2,374	2,209	8,414	2,796	-66.8	
Q3	120,384	146,418	153,292	190,503	240,249	293,770	364,473	450,347	536,600	19.2	
Holiday	113,759	136,244	136,951	173,112	227,026	281,572	350,709	429,512	521,200	21.3	
Business	5,479	8,453	14,632	15,498	11,073	10,183	11,801	13,303	13,072	-1.7	
Other	1,146	1,721	1,709	1,893	2,150	2,015	1,963	7,532	2,328	-69.1	
Q4	164,467	191,005	239,193	261,367	279,515	321,436	366,326	506,104	572,523	13.1	
Holiday	126,133	180,009	219,845	243,989	265,496	306,029	352,930	484,259	555,219	14.7	
Business	6,886	9,360	16,988	15,226	11,575	12,750	11,432	15,502	15,643	0.9	
Other	31,448	1,636	2,360	2,152	2,444	2,657	1,964	6,343	1,661	-73.8	

UNIT II

DOMESTIC TOURISM

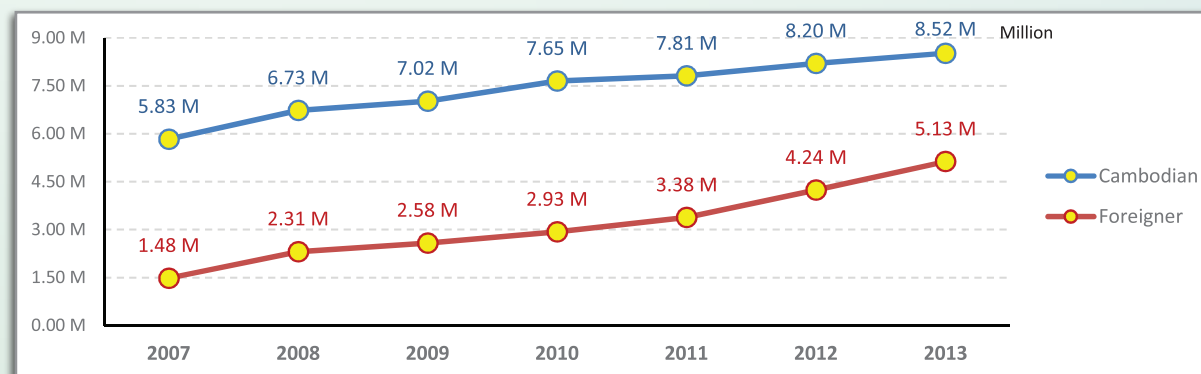
Domestics Tourism Statistics Report in 2010 - 2013

No.	Destinations	2010		2011		2012		2013		share (%)		change (%)	
		KHM	INT	KHM	INT	KHM	INT	KHM	INT	2013*		2013*/12	
										KHM	INT	KHM	INT
I	1 Phnom Penh	2,001,850	1,203,033	2,124,065	1,307,498	1,984,612	1,520,971	2,204,573	1,972,879	25.9	38.5	11.1	29.7
II	Cultural Zone	1,744,768	1,333,642	1,815,755	1,644,267	2,125,322	2,107,982	2,345,567	2,290,778	27.5	44.7	10.4	8.7
	2 Kampong Thom	53,130	16,165	58,587	21,882	75,505	22,272	71,538	27,179	0.8	0.5	-5.3	22.0
	3 Oddar Meanchey	93,304	972	23,312	1,767	43,598	3,186	34,272	1,763	0.4	0.0	-21.4	-44.7
	4 Preah Vihear	21,087	11,249	32,506	10,542	48,361	19,188	46,757	24,550	0.5	0.5	-3.3	27.9
	5 Siem Reap	1,577,247	1,305,256	1,701,350	1,610,076	1,957,858	2,063,336	2,193,000	2,237,286	25.7	43.6	12.0	8.4
III	Coastal Zone	1,200,413	162,080	1,691,829	193,093	1,827,927	280,658	2,080,790	513,891	24.4	10.0	13.8	83.1
	6 Kampong Som	491,134	133,532	558,287	153,736	657,821	212,643	731,604	302,325	8.6	5.9	11.2	42.2
	7 Kampot	238,147	16,940	316,376	17,198	401,528	24,972	614,610	117,280	7.2	2.3	53.1	369.6
	8 Kep	372,092	6,922	740,313	8,763	685,780	35,316	638,496	46,840	7.5	0.9	-6.9	32.6
	9 Koh Kong	99,040	4,686	76,853	13,396	82,798	7,727	96,080	47,446	1.1	0.9	16.0	514.0
IV	Eco-tourism	226,495	43,409	285,783	48,674	371,127	53,388	407,551	60,501	4.8	1.2	9.8	13.3
	10 Kratie	22,408	13,733	35,941	17,296	48,412	19,714	46,546	22,766	0.5	0.4	-3.9	15.5
	11 Mondul Kiri	40,652	3,916	58,757	4,879	78,784	5,138	95,059	5,215	1.1	0.1	20.7	1.5
	12 Rattanak Kiri	100,605	17,961	100,930	17,562	134,965	19,163	145,633	20,280	1.7	0.4	7.9	5.8
	13 Stung Treng	62,830	7,799	90,155	8,937	108,966	9,373	120,313	12,240	1.4	0.2	10.4	30.6
V	Battambang Zone	594,953	118,583	606,885	136,204	595,328	228,130	687,848	191,899	8.1	3.7	15.5	-15.9
	14 Banteay Meanchey	75,205	12,530	77,331	12,157	80,276	15,378	79,604	1,902	0.9	0.0	-0.8	-87.6
	15 Battambang	226,541	40,562	288,598	58,941	317,010	72,314	392,583	83,403	4.6	1.6	23.8	15.3
	16 Pailin	244,027	62,571	233,535	62,047	188,240	136,586	197,225	101,919	2.3	2.0	4.8	-25.4
	17 Pursat	49,180	2,920	7,421	3,059	9,802	3,852	18,436	4,675	0.2	0.1	88.1	21.4
VI	Others	1,794,220	67,494	1,286,748	48,034	1,349,544	49,581	792,424	97,619	9.3	1.9	-41.3	96.9
	18 Kampong Cham	286,820	27,487	233,439	11,222	276,194	10,976	403,684	54,865	4.7	1.1	46.2	399.9
	19 Kampong Chhnang	11,327	3,306	15,484	4,335	14,484	3,428	24,162	3,417	0.3	0.1	66.8	-0.3
	20 Kampong Speu	23,265	14,341	17,060	12,127	22,701	13,511	22,632	12,545	0.3	0.2	-0.3	-7.1
	21 Kandal	1,407,725	7,687	958,491	5,186	963,128	7,552	253,784	12,564	3.0	0.2	-73.7	66.4
	22 Prey Veng	14,254	2,343	10,761	1,602	9,682	3,046	8,634	2,730	0.1	0.1	-10.8	-10.4
	23 Svay Rieng	13,025	850	12,257	1,607	20,679	1,042	22,830	1,711	0.3	0.0	10.4	64.2
	24 Takeo	37,804	11,480	39,256	11,955	42,676	10,026	56,698	9,787	0.7	0.2	32.9	-2.4
	TOTAL	7,562,699	2,928,241	7,811,065	3,377,770	8,253,860	4,240,710	8,518,753	5,127,567	100.0	100.0	3.2	20.9

Note:

KHM: Cambodian Visitors
INT: Foreign Visitors

Cambodia: Domestic Tourism



UNIT III

TOURISM SUPPLY SIDE

Tourism Supply Side: Accommodations

Number of Hotels and Guesthouse from 1997 - 2013

Years	Hotels				Guesthouse			
	number	change (%)	rooms	change (%)	number	change (%)	rooms	change (%)
1997	179	0	6,989	0	60	0	477	0
1998	216	20.7	8,247	18.0	147	145.0	1,510	216.6
1999	221	2.3	9,115	10.5	186	26.5	1,897	25.6
2000	240	8.6	9,673	6.1	292	57.0	3,233	70.4
2001	247	2.9	10,804	11.7	370	26.7	3,899	20.6
2002	267	8.1	11,426	5.8	509	37.6	6,109	56.7
2003	292	9.4	13,201	15.5	549	7.9	6,497	6.4
2004	299	2.4	14,271	8.1	615	12.0	7,684	18.3
2005	317	6.0	15,465	8.4	684	11.2	9,000	17.1
2006	351	10.7	17,914	15.8	742	8.5	9,166	1.8
2007	395	12.5	20,470	14.3	891	20.1	11,563	26.2
2008	398	0.8	20,678	1.0	925	3.8	12,180	5.3
2009	451	13.3	23,010	11.3	1,018	10.1	14,512	19.1
2010	440	-2.4	24,393	6.0	1,087	6.8	15,321	5.6
2011	476	8.2	26,484	8.6	1,142	5.1	16,752	9.3
2012	490	2.9	27,117	2.4	1,296	13.5	19,329	15.4
2013	545	11.2	29,937	10.4	1,462	12.8	21,286	10.1

Tourism Services Statistics in 2013

No.	Destinations	Hotels		Guesthouses		Tours Operators	Tours Guides	Restaurant	Massage	Karaoke	Casino
		Numbers	Rooms	Numbers	Rooms						
I	Phnom Penh	164	7,722	422	6,393	325	387	340	94	159	1
II	Cultural Areas	175	11,768	302	4,558	264	3,689	265	59	63	3
	1 Kampong Thom	6	191	29	313			51	5	20	
	2 Oddar Meanchey	4	244	17	391			27	5	14	3
	3 Preah Vihear	2	52	27	357		14	9		12	
	4 Siem Reap	163	11,281	229	3,497	264	3,675	178	49	17	
III	Costal Areas	74	4,304	313	4,383	8	8	239	45	29	10
	1 Kampong Som	52	2,493	150	2,210	6		79	13	8	7
	2 Kampot	7	764	79	939		8	63	13	11	2
	3 Kep	7	253	46	522			77	4	6	
	4 Koh Kong	8	794	38	712	2		20	15	4	1
IV	Eco-tourism	33	1,247	108	1,578	0	10	123	15	40	3
	1 Kratie	11	435	24	262		10	31	2	9	2
	2 Mondul Kiri	4	169	28	480			43	5	14	1
	3 Rattanak Kiri	14	508	35	508			14	3	9	
	4 Stung Treng	4	135	21	328			35	5	8	
V	Battambang Areas	54	2,401	113	1,957	15	0	93	20	55	10
	1 Banteay Meanchey	17	579	44	805	11		36	9	15	5
	2 Battambang	29	1,406	39	750	4		35	5	19	
	3 Pailin	4	240	11	161			5		10	5
	4 Pursat	4	176	19	241			17	6	11	
VI	Others	45	2,495	204	2,417	1	0	276	14	149	20
	1 Kampong Cham	14	831	78	847			131	6	41	4
	2 Kampong Chhnang	7	206	12	96			26	1	7	
	3 Kampong Speu	4	123	15	197			29		17	
	4 Kandal			9	120			9		6	4
	5 Prey Veng	8	200	23	116			3	1	32	2
	6 Svay Rieng	12	1,135	28	552	1		28	5	14	9
	7 Takeo			39	489			50	1	32	1
	TOTAL	545	29,937	1,462	21,286	613	4,094	1,336	247	495	47

Tourism Supply Side: Tourism Services

Number of travel agencies and tours operators from 1996 - 2013

Years	Offices			change (%)
	head	branch	Total	
1996	81	35	116	0
1997	78	37	115	-0.9%
1998	103	34	137	19.1%
1999	117	43	160	16.8%
2000	140	64	204	27.5%
2001	166	70	236	15.7%
2002	186	73	259	9.7%
2003	186	84	270	4.2%
2004	208	94	302	11.9%
2005	237	99	336	11.3%
2006	277	105	382	13.7%
2007	333	118	451	18.1%
2008	354	119	473	4.9%
2009	372	113	485	2.5%
2010	392	115	507	4.5%
2011	404	185	589	16.2%
2012	457	108	565	-4.1%
2013	513	100	613	8.5%

Licensed Tour Guides in 2013

No.	Languages	2009				2010				2013			
		Phnom Penh		Siem Reap		Phnom Penh		Siem Reap		Phnom Penh		Siem Reap	
		Total	Females	Total	Females	Total	Females	Total	Females	Total	Females	Total	Females
1	English	133	33	1,081	59	143	34	1,101	60	227	52	1273	72
2	Japanese	46	13	651	147	46	13	659	147	60	17	757	163
3	French	52	19	191	30	54	20	192	31	94	32	246	45
4	Chinese	60	3	297	46	64	4	303	48	127	15	634	98
5	Korean	2	0	101	5	2	0	101	5	6	0	174	16
6	Thai	9	4	234	26	9	4	234	26	12	5	321	51
7	German	26	7	87	7	28	7	89	7	47	14	107	12
8	Spanish	12	1	100	5	13	1	103	6	22	3	112	8
9	Italian	1	0	22	1	1	0	22	1	11	2	25	1
10	Russian	6	1	38	4	6	1	39	4	22	4	70	8
11	Vietnam	5	1	16	2	5	1	16	2	47	10	100	13
12	English-Spanish									1		4	
13	French-Thai									1		1	
14	Malay									8		4	
	Total	352	82	2,818	332	371	85	2,859	337	685	154	3,828	487

Airlines
Domestic Airlines

No.	Airlines	Code	From / To	Flight	Time Travel	Address
1	Cambodia Angkor Air	K6	Ho Chi Minh	PNH: 14/week REP: 21/week	45mn	PNH: #206A, Preah Norodom Blvd., Tel.: +855 23 6666788 Fax: +855 23 224164
			PNH - REP	28/week		
			REP - KOS	7/week		
			PNH - PVG	3/week		
			REP - CAN	7/week		
2	Skywing Asia Airlines	ZA	PNH - HAN - ICN	3/week Charter		

International Airlines

No.	Airlines	Code	From / To	Flight	Time Travel	Address
3	Thai Airways International	TG	Bangkok	PNH: 14/week	1h10mn	PNH: #8B, 294 Mao Tse Toung Blvd., Tel.: +855 23 214359-61 Fax: +855 23 214369
4	Vietnam Airlines	VN	Ho Chi Minh Vientiane Ho Chi Minh Hanoi Luang Prabang	PNH: 10/week PNH: 7/week REP: 14/week REP: 28/week REP: 7/week	1h 2h35mn 2h40mn	PNH: #41, Street 214 Tel.: +855 (0)23 215998 REP: #342, National Road 6, Tel.: +855 (0)63 964488
5	Silk Air	MI	Singapore	PNH: 13/week REP: 8/week	2h15mn 1h55mn	PNH: #219-B, Himawari Hotel Apartments Tel.: +855 23 426808
6	Malaysian Airlines	MH	Kuala Lumpur	PNH: 14/week REP: 3/week	1h50mn 1h05mn	PNH: #172-184, Monivong Blvd., Tel.: +855 23 426688
7	Dragon Air	KA	Hong Kong	PNH: 7/week REP: 4/week	2h15mn	PNH: #168, Street 217, Tel.: +855 (0)23 424300
8	Eva Air	BR	Taiwan	PNH: 7/week	3h30mn	PNH: Suite 8A, #298, Mao Tse Toung Tel.: +855 (0)23 219911
9	Bangkok Airways	PG	Bangkok	PNH: 28/week REP: 35/week	1h10mn 1h	PNH: #61A, Street 214, Tel.: +855 23 722545 REP: #571, National Road 6 Tel.: +855 (0)63 720022
10	AIR Busan	BX	Seoul	REP: 4/week		
11	China Southern Airlines	CZ	Goangzhou	PNH: 10/week REP: 7/week	1h30mn	PNH: #168, Street Monireth, Tel.: +855 (0)23 424588
12	Lao Airlines	QV	Vientiane	PNH: 3/week REP: 8/week	2h30mn 2h35mn	PNH: #58B, Sihanouk Blvd., Tel.: +855 (0)23 222956 REP: #114, National Road 6 Tel.: +855 (0)63 963283
13	Air Asia Berhad	AK/FD	Kuala Lumpur Bangkok	PNH: 14/week REP: 7/week	2h10mn 2h10mn	PNH: #66, Mao Tse Toung Blvd., Tel.: +855 (0)23 356011
14	Thai Air Asia	FD	Bangkok	PNH: 7/week REP: 14/week		PNH: #32, Street 322, Norodom Blvd., Fax: +855 (0)23 222695
15	Jetstar Asia Airways	3K	Singapore	PNH: 7/week REP: 3/week	1h55mn 2h05mn	PNH: Tel: +855 (0)23 220909 REP: Tel: +855 (0)63 964388
16	China Airlines	CI	Taipei, Taiwan	PNH: 3/week	3h30mn	PNH: #32, Norodom Blvd., Tel.: +855 (0)223525
17	Korean Air	KE	Seoul Seoul Pusan	PNH: 7/week REP: 13/week REP: 4/week	5h	Room No. F3-R03, Intellingent Office, 254 Preah Monivong Blvd., Phnom Penh Tel.: +855 (0)23 224047-49 Fax: +855(0)23 224050
18	Asiana Airlines	OZ	Seoul	PNH: 7/week REP: 7/week	5h10mn 5h30mn	Tel.: +855 (0)23 890441-442
19	China Eastern Airlines	MU	Naning Shanghai	PNH: 3/week REP: 2/week	2h10mn	
20	Air China	CA	Beijing	REP: 2/week		
21	Myanmar Air		Yangoon	PNH: 2/week REP: 2/week		
22	Cebu Pacific	5J	Manila	REP: 4/week		
23	Qatar Airways	QR	Doha	PNH: 7/week		
24	Tiger Airways	TR	Singapore	PNH: 7/week		
25	Japan Airlnes	JL		REP: Charter		
26	Thomson Airways	BY		REP: Charter		
27	Tuifly Nordic	6B		PNH: Charter		
28	Jeju Air	7C		REP: Charter		
29	Transasia Airways	GE		REP: Charter		
30	Ice Landair	FI		REP: Charter		

Note: PNH: Phnom Penh; REP: Siem Reap; KOS: Sihanouk Ville; BBM: Battambang; KKZ: Koh Kong; MWV: Mondul Kiri; RBE: Rattanak Kiri; TNX: Stung Treng

Published by: Statistics and Tourism Information Department, Ministry of Tourism.

Sources: Immigration Department of the Ministry of Interior and Provincial Tourism Departments;

Compiled by:

1. Mr. KONG Sopheareak, Director, researcher and analyst
2. Mr. HORTH Vanny, Inbound and outbound tourism statistics
3. Mr. NUTH Nearak, Interview monitor
4. Mr. SUONG Mardy, Photographer
5. Mr. SANG Sithikun, Domestic tourism statistics
6. Mr. CHAK Vorleak, Monitoring and data entries
7. Mr. LANG Daravuth, Data collector
8. Mr. SOK Sokha, Data collector
9. Mr. LANG Solina, Designer

