



MINISTRY OF TOURISM

KINGDOM OF CAMBODIA
NATION RELIGION KING

ANNUAL TOURISM STATISTICS REPORT

2014



The RISING STAR
of the Southwest



Southeast Asia
feel the warmth

Bou Sra, Mondulkiri
Photo by: Suong Mardy

**ANNUAL REPORT
ON
TOURISM STATISTICS 2014**

**STATISTICS & TOURISM INFORMATION DEPARTMENT
MINISTRY OF TOURISM**

KINGDOM OF CAMBODIA



MINISTRY OF TOURISM

Statistics and Tourism Information Department

No. 3A, Street 169, Sangkat Veal Vong, Khan 7 Makara, Phnom Penh, Cambodia.

Tel.: +855 23 884972 | Fax: +855 23 885003

Email: info@mot.gov.kh

Website: www.mot.gov.kh

Message



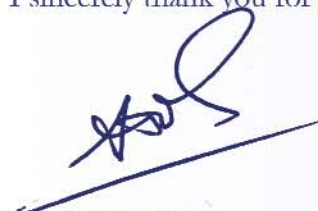
Dear all readers,

The Ministry of Tourism (MOT) of Cambodia has collated data and published tourism statistical reports annually by providing pivotal information related to the tourism industry. This statistical report has been received very well over the years. The strong commitments of the Statistics and Tourism Information Department and research team have generated the results of invaluable statistics by providing fundamental indicators, as well as valuable materials to benefit private sectors, all relevant stakeholders, and both national and international investors to invest in Cambodia.

I am immensely delighted to inform that our tourism sector has been enjoying a steady growth at a remarkable rate. In the year of 2014 there was an increase of 7.0% over last year with more than 4.5 million, international tourists of which Siem Reap - Angkor has welcomed over 2.3 million tourists with an increase of 5.1% and Phnom Penh has also received 2.2 million tourists with the increase of 9.1% as a whole. Moreover, the number of domestic tourists recorded approximately 9.0 million, increased by 5.7% over the previous year. Based on the ongoing rate, we are strongly optimistic that Cambodia will be able to attract more than 7 million international tourists by 2020. In order to accomplish the abovementioned rapidly growing trend, the Royal Government of Cambodia has further intensified the promotional campaign “**Cambodia Kingdom of Wonder**” where all the world heritages are exclusively assembled, namely Angkor Wat and Preah Vihear Temple, and has also promoted the competitive movement of “**Clean City, Clean Resort, Good Service, Best Hospitality**”, which is a potential tool for providing all the visitors with excellent tourism service quality and making Cambodia become Clean and Green and world-class tourism destination.

We sympathetically believe that this statistical report of 2014 will be a beneficially crucial instrument for academic purposes, documentation for researchers for the sake of private sectors and all relevant stakeholders as much as it may serve. Furthermore, it also acts as a key indicator for both national and international investors aiming to invest in tourism sector in Cambodia.

I sincerely thank you for your interest and wish you all contentment.



Dr. THONG Khon
Minister of Tourism

Disclaimer

All rights are reserved. No part of this publication may be reproduced or transmitted in any form or by any means, electronic or mechanical, photocopying, recording, scanning or any form information storage and retrieval systems without prior permission in writing of authorised personnel from the Department of Statistics and Tourism Information of the Ministry of Tourism.

Limit of liability/Disclaimed of Warranty: While the publisher and author have used their best efforts in preparing this book, they make no representations or warranties with respect to the accuracy or completeness of the contents other this book and specifically disclaim any implied warranties of merchantability or fitness for a particular purpose. No warranty may be created or extended by sales representatives or written sales materials. The publisher is not engaged in rendering professional services, and you should consult with a professional where appropriate. Neither the publisher nor author shall be liable for any loss of profit or other commercial damages, including but not limit to special, incidental, consequential, or other damages.

This publication is intended to provide accurate information, data, statistics as well as materials derived from Information of the Ministry of Tourism was established by the Royal Government of Cambodia. With the commitments of our department, we have collected data of international visitor arrivals from various international border check points in Cambodia.

Particularly, it is nationally recognised that this Annual Statistical Report has been following the Definition of Tourism Statistics which is adopted and approved by Minister of Tourism. Statistical data used was accurate at the time of compilation and printing some changes due to revisions and/or changing collection and weighting techniques may have occurred since then.

Please contact the Department of Statistics and Tourism Information of the Ministry of Tourism (admin@mot.gov.kh) for the detail.



General Information



Official Name	Kingdom of Cambodia
Area	181,035 km ²
National Independence Day	09 November, 1953
Population	15,184,116 (Projection 2014) Male: 48.6%; Female: 51.4%
Annual Population Growth Rate	1.54%
Cambodian Outbound Tourism	955,909 (2014)
Density	78
Language	Khmer
Religion	Buddhist 97%
Capital	Phnom Penh
Provinces	25
Cities	26
Khans	8
Districts	159
Communes	1,417
Sangkats	204
Country Code	+855
Time	GMT +7 hours

Khmer History

The Mon-Khmer race developed slowly during the first six centuries of the Christian era. Under Indian influence, a powerful maritime empire called “Funan” ruled over all the shores of the Gulf of Siam. Within a short time, this new power known as Chenla absorbed the Funanese Kingdom. In the late 7th century, Chenla broke into two parts: land Chenla (to the north) and water Chenla (to the south along the Gulf of Thailand). Land Chenla was fairly stable during the 8th century, whereas water Chenla was beset by dynastic rivalries.

At the beginning of the 9th century, the kings set up their capital in the present province of Siem Reap. For nearly six centuries, they erected two hundred temples as well as their sanctuaries in the Angkorian area of some 400 square kilometers in the Siem Reap Province.

King Suryavarman II (1113-1150) built the temples such as Angkor Wat, Thommanon, Chau Say Tevoda, Preah Palilay, Preah Pithu, and Banteay Samrè.

Jayavarman VII (1181-1220) was best known for his huge building program. Firstly, he built Ta Prohm (1186) and Preah Khan (1191) to dedicate to his parents. Secondly, he erected Banteay Kdei, Srah Srang, the Terrace of the Leper King, the Terrace of the Elephants, Neak Pean, Ta Som, Ta Nei, and some others in other parts of the country. Thirdly, he founded his great capital, Angkor Thom. Finally, in the center, he built the Bayon with its two hundred stone faces.

The decline of the Angkor era began after the death of King Jayavarman VII in the early 13th century. Due to the Siamese invasion and the limitation of the irrigation system, Khmer power declined so much that the king was finally obliged to move to the vicinity of Phnom Penh in 1431. Resulting from a series of Siamese and Cham invasions, the country was put as a French protectorate in 1863.

After regaining Independence in 1953, the country has had several names:

1. The Kingdom of Cambodia (under the Reachia Niyum Regime from 1953 to 1970);
2. The Khmer Republic (under the Lon Nol Regime from 1970 to 1975);
3. Democratic Kampuchea (under the Pol Pot Genocidal Regime from 1975 to 1979);
4. The People’s Republic of Kampuchea (1979-1989);
5. The State of Cambodia (1989-1993);
6. The Kingdom of Cambodia (1993 until now).

Acknowledgement

First, we would like to pay our deepest gratitude to all of the officials in the Statistics and Tourism Information Department, who honor their involvement in this fruitful achievement with their presence. You all have strongly contributed so much to this accomplishment over the years.

Special thanks to General Department of Immigration (GDI) of the Ministry of Interior, who has strongly cooperated with Department of Statistics and Tourism Information, which has always provided reports, data related to visitor arrivals at border checkpoints and all of 25 Provincial Tourism Departments, who has always assembled data on domestic tourism and tourism industry services and submitted to our department monthly. They play an important role in shaping our quality of our work and our publication to the max.

Special thanks to Mr. KONG Sopheareak, Director, Researcher and Analyst, whose work and mentorship have profoundly shaped the quality of our work towards this remarkable achievement like today. We are positively conscious of his influence and great contribution to our work on daily basis.

Thanks to Mr. HORTH Vanny, Inbound and Outbound Tourism Statistics, who observes closely to the prevalence of the inbound and outbound movement of statistics and Mr. CHAK Vorleak, Photographer and Designer, Survey Monitor and Data analyst, who tries his level best to creatively design the cover and styles within the book. Both of them have equally contributed their efforts to fasten the work to get this annual report done.

Thanks to Mr. SUONG Mardy, Photographer, Designer, who has provided photos of beautiful scenery of Cambodia's nature and other natural resorts to put on the cover of this report, which makes it more good-looking and attractive.

Thanks to Mr. NUTH Nearak, Interview Monitor, who has taken time to monitor the process of assembling the raw information and communicating with other interviewing sites without his interpersonal communication our raw data seems less productive.

Thanks to Mr. RAY Bora, Editor and Data Entries, who plays a role in editing the text and statement as well as assists in entering the data in this annual report. Also, Mr. OEUN Channthan, Data Entries and Data Collector, who equally puts much effort to this work by going to the sites to gather data and entering data into the report.

Thanks to Mr. SANG Sithikun, Domestic Tourism Statistics, who persistently strives to accomplish the domestic statistics to contribute to the achievement of this report as well as Mr. LANG Daravuth, Data Collector, who always involves in the process of data collection with much effort and passion in accomplishing this statistical report.

Thanks to Mrs. PHANG Nid Fairy, Data Collector, who is the only female in team, who shows strong commitment to the work and softens the work with communication and solution. Also, Mr. SOK Sokha, Data Collector, who always puts the effort and enthusiasm towards the work and obeys the rules firmly.

To everyone who has contributed their effort to the success of this annual statistics, especially our officials in the Department of Statistics and Tourism Information.

We would like to pay our deep thank to our family and deeply acknowledge the greatest teachers in my life, our parents. It would be impossible for us to express our deep gratitude in this small space and the depth of the appreciation we feel for our accomplishment.

Finally, the accomplishment of this annual report would not have been possible without the assistance of our good officials in the department. More importantly, we are immensely appreciated ambition, enthusiasm, strength, participation that we have embraced towards this prolific outcome. Wholeheartedly, we will be forever indebted in this priceless cooperation of our department.

Thank you.

CONTENTS

Minister Message	
Disclaimer	
General Information	
Acknowledgement	
Tourism Highlight 1993 – 2014	
Quick overview of key trends in 2014	
Map of International Border Check-Point	

Unit I – Inbound and Outbound Tourism Statistics

International Tourist Arrivals to Cambodia by Months in 2009 – 2014	1
International Tourist Arrivals to Cambodia by Country of Residence in 2014	2 – 3
<i>(by all mean of transports)</i>	
International Tourist Arrivals to Cambodia by Purpose of Visit in 2014	4 – 5
<i>(by all mean of transports)</i>	
International Tourist Arrivals to Cambodia by Regions in 2014	6
<i>(by all mean of transports)</i>	
International Tourist Arrivals to Cambodia by Mode of Arrivals in 2013 – 2014	7
International Tourist Arrivals to Cambodia by Mode of Arrivals in 2010 – 2014 <i>(by all mean of transports)</i>	7
Top ten Generating Market from 2008 – 2014	8
International Tourist Arrivals to Cambodia by International Border Check Points in 2014	9 – 10
Cambodian Outbound Tourism by Int'l Border Check-points in 2008 – 2014	11
International Outbound Tourist Departures by Int'l Border Check Points in 2009 – 2014.....	12
Major Data in 1993 – 2014	13
Profile of international Tourist Arrivals to Cambodia in 2010 – 2014 (Inbound Tourism Survey 2014).....	14

Section I: Phnom Penh International Airport

International Tourist Arrivals to Phnom Penh International Airport by Months in 2008 – 2014	15
International Tourist Arrivals to Phnom Penh International Airport by Country of Residences in 2014.....	16 – 17
Top Ten Generating Markets in 2014, Tourist Arrivals by Ranks	17
International Tourist Arrivals to Phnom Penh International Airport by Regions in 2014	18
International Tourist Arrivals to Phnom Penh International Airport by Purpose of Visit in 2008 – 2014	19
Int'l Tourist Departures from Phnom Penh International Airport by Months in 2008 – 2014	20

Section II: Siem Reap International Airport

International Tourist Arrivals to Siem Reap Angkor by Months in 2008 – 2014.....	21
<i>(by all mean of transports)</i>	
International Tourist Arrivals to Siem Reap International Airport by Months in 2008 – 2014	21
<i>(by air only)</i>	
International Tourist Arrivals to Siem Reap International Airport by Country of Residences in 2014	22 – 23
Top Ten Generating Markets in 2014, Tourist Arrivals by Ranks <i>(by air only)</i>	23
International Tourist arrivals to Siem Reap International Airport by Regions in 2014	24
International Tourist Arrivals to Siem Reap International Airport by Purpose of Visit in 2008 – 2014	25
International Tourist Arrivals to Siem Reap Angkor by Mode of Transports in 2013 – 2014.....	26
Top Ten Generating Markets in 2014, Int'l Tourist Arrivals <i>(by all mean of transports)</i>	26

Section III: International Border Check-points

International Tourist Arrivals to Cambodia by Land and Waterways in 2008 – 2014	27
Int'l Tourist Arrivals to Cambodia by Land and Waterways by Country of Residence in 2014.....	28 – 29
Top Ten Generating Markets in 2014, Tourist Arrivals by Ranks	29
International Tourist Arrivals to Cambodia by Land and Waterways by Regions in 2014	30
International Tourist Arrivals to Cambodia by Land and Waterways by Purpose of Visit in 2008 – 2014.....	30

Unit II – Domestic Tourism Statistics

Cambodian Visitor Arrivals to Provinces in 2010 – 2014	31
Foreigner Visitor Arrivals to Other Destinations in 2010 – 2014	31

Unit III – Tourism Supply

Tourism Supply: Accommodations

Number of Hotels and Guesthouses from 1997 – 2014	32
Tourism Services Statistics in 2014	32

Tourism Supply: Tourism services

Number of Travel agencies and Tour Operators from 1996 – 2014	33
Licensed Tour Guides in 2014	33

Airlines	34
----------------	----

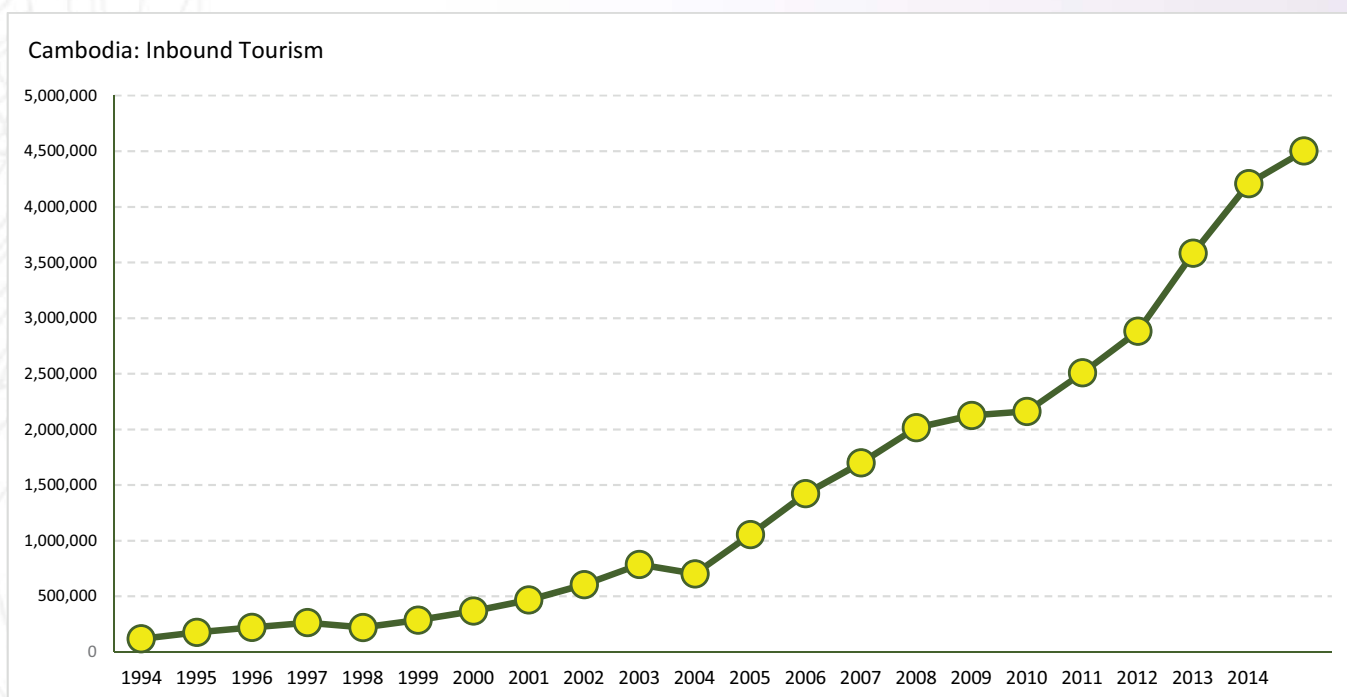
Definitions	35
-------------------	----



Tourism Highlights

International Tourist Arrivals, Average Length of Stay, Hotels Occupancy & Tourism Receipts 1993 - 2014

Years	Int'l Tourist Arrivals		Average Length	Hotels Occupancy	Tourism Receipts
	Number	Change (%)	of Stay (Days)	(%)	(Million US\$)
1993	118,183	-	N/A	N/A	N/A
1994	176,617	49.4	N/A	N/A	N/A
1995	219,680	24.4	8.00	37.00	100
1996	260,489	18.6	7.50	40.00	118
1997	218,843	-16.0	6.40	30.00	103
1998	286,524	30.9	5.20	40.00	166
1999	367,743	28.3	5.50	44.00	190
2000	466,365	26.8	5.50	45.00	228
2001	604,919	29.7	5.50	48.00	304
2002	786,524	30.0	5.80	50.00	379
2003	701,014	-10.9	5.50	50.00	347
2004	1,055,202	50.5	6.30	52.00	578
2005	1,421,615	34.7	6.30	52.00	832
2006	1,700,041	19.6	6.50	54.79	1,049
2007	2,015,128	18.5	6.50	54.79	1,400
2008	2,125,465	5.5	6.65	62.68	1,595
2009	2,161,577	1.7	6.45	63.57	1,561
2010	2,508,289	16.0	6.45	65.74	1,786
2011	2,881,862	14.9	6.50	66.15	1,912
2012	3,584,307	24.4	6.30	68.49	2,210
2013	4,210,165	17.5	6.75	69.53	2,547
2014	4,502,775	7.0	6.50	67.55	2,736



Quick overview of key trends

International tourism – 2014 result:

- A total of twenty two international border check points consists of two international airports, sixteen land international border check points, and three international ports which have been collected monthly reports on international tourist arrivals to Cambodia for 2014.
- International tourist arrivals to Cambodia was witnessed 4.5 million with an increase of 7.0%, from 4.2 million up in 2013, which demonstrated slight increase a bit lower than last year. Asia and the Pacific were seen as maintaining steady growth among regions with 8.3%, while by sub-region, the arrivals from ASEAN member countries reached (+8.3%), Europe (+1.5%), Americas (+5.1%), Middle East(+12.4%) and Africa (+5.3%).
- The number of international tourist arrivals, which is the first time that we could welcome 500,579 tourists in December equal to 11.1% of total arrivals. In January is still the second of month that welcome the most tourists after December, which consists of 442,045 tourists equating to 10.5% of total arrivals.
- In the fourth quarter of 2014, the international tourist arrivals to Cambodia accounted for 13.0% with an increase comparing to the same period in 2013, which was the peak period for Cambodia tourism. In the first quarter of 2014 there was an increase of 8.2% which was reported as the second rank in increasing rate. The third quarter there was an increase of 3.5% while the last quarter, second quarter, was witnessed the lowest increasing rate which amounted only 1.4%. In particular, we can see that the average length of stay was 6.50 days, and the hotel occupancy slightly dropped to 67.55%, from 69.53%.
- **Tourism receipts:**
Consequently, Cambodia tourism receipts improved significantly at USD 2,736 million for 2014, which represented a growth of 7.4% compared to 2013. The expenditure of tourists per trip was USD 612 and USD 94 per day.
- **By air:**
in 2014 the international tourist arrivals by air accounted for 2,273,493 tourists, equating to 50.5% of total arrivals, containing of 30.1% of air arrivals were listed at Siem Reap International Airport and another 20.4% was recorded at Phnom Penh international Airport. Furthermore, 12.7% was reported an increase from the arrivals to Cambodia by air comparing to the year.
- **By land and waterway:**
overland arrivals to Cambodia accounted for 2,132,332 tourists in 2014, equating to 47.4% of total arrivals, with an increase of 0.7% which is critically lower than the average line ever recorded. Surprisingly, waterway arrivals have become increased 29.2% noticeably, which accounted for 96,950, equating to 2.2% of total arrivals. Unexpectedly, international tourist arrivals by land and waterway in 2014 contradict to the international tourist arrivals by land and waterway in 2013.

- **Purpose of Visit:**

The pivotal purpose of tourist's visit is categorized into three activities. First of all, holiday consisted of leisure, recreation, sports, visiting friends and relatives (VFR), Health treatment, Religion or pilgrimages, was accounted for 94.5% of total arrivals. Second, business followed by 4.6%. Last, other pertinent activities covered 0.9%.

- **Visitor Profile:**

Surrounded by the 4.5 million international tourists to Cambodia in 2014, female accounted for 44.1% of total international arrivals. Noticeably, 82.6% of tourist arrivals to Cambodia as their first visit, and 17.4% of travelers recorded as returned tourists. Among international tourist arrivals to Cambodia, it is seen that the group age of 40-49 years old of tourists has taken the first place, which accounted for an average of 32.35% of total tourist arrivals and followed by the group age of 20-29 years old amounted for 24.8%. Moreover, tourists' occupational categories were characterized of 7.9% of tourists as retired persons, 17.1% teachers, 3.5% government officials, 23.2% business persons, 30.2% employees, 12.2% students, and 6.2% others. Besides, the travel arrangement covered 41.5% as free independent travelers (FIT) and 58.5% as group inclusive travelers (GIT) among all the international tourist arrivals.

- **Market Share:**

Vietnam 20.1%, china 12.4%, Laos PDR 10.2%, Republic of Korea 9.4%, Thailand 6.2%, Japan 4.8%, United States of America 4.2%, Australia 3.2% , France 3.1%, and Australia 3.0% were the top-ten market for Cambodia tourism in 2014.

- **Domestic Tourism:**

in 2014, Cambodia received an overall domestic tourist of 9.0 million from all tourist destinations, presenting a total growth of 5.7% comparing to the year 2013. The number of domestic tourists of 2.67 million saw a 21.9% increase to Siem Reap Province; whereas Phnom Penh received 2.26 million tourists with an increase of 2.4%. The coastal areas (lying 440 km in the provinces of Kampong Som, Kampot, Kep, and Koh Kong) received 2.12 million tourists, with an increase of 1.7% comparing to the previous year 2013. Furthermore, tourists travelled to the ecotourism destinations in Cambodia-the Northeast provinces including Kratie, Mondulkiri, Rattanakiri, and Stung Treng – received an overall number of tourists of 0.45 million, with an increase of 9.2%. Additionally, a potential region, Battambang Area, which plays a significant role in agriculture of Cambodia included Battambang, Banteay Meanchey, Pailin, and Pursat received a total domestic tourists of 0.77 million with an increase of 12.3% comparing to the year 2013.



UNIT I

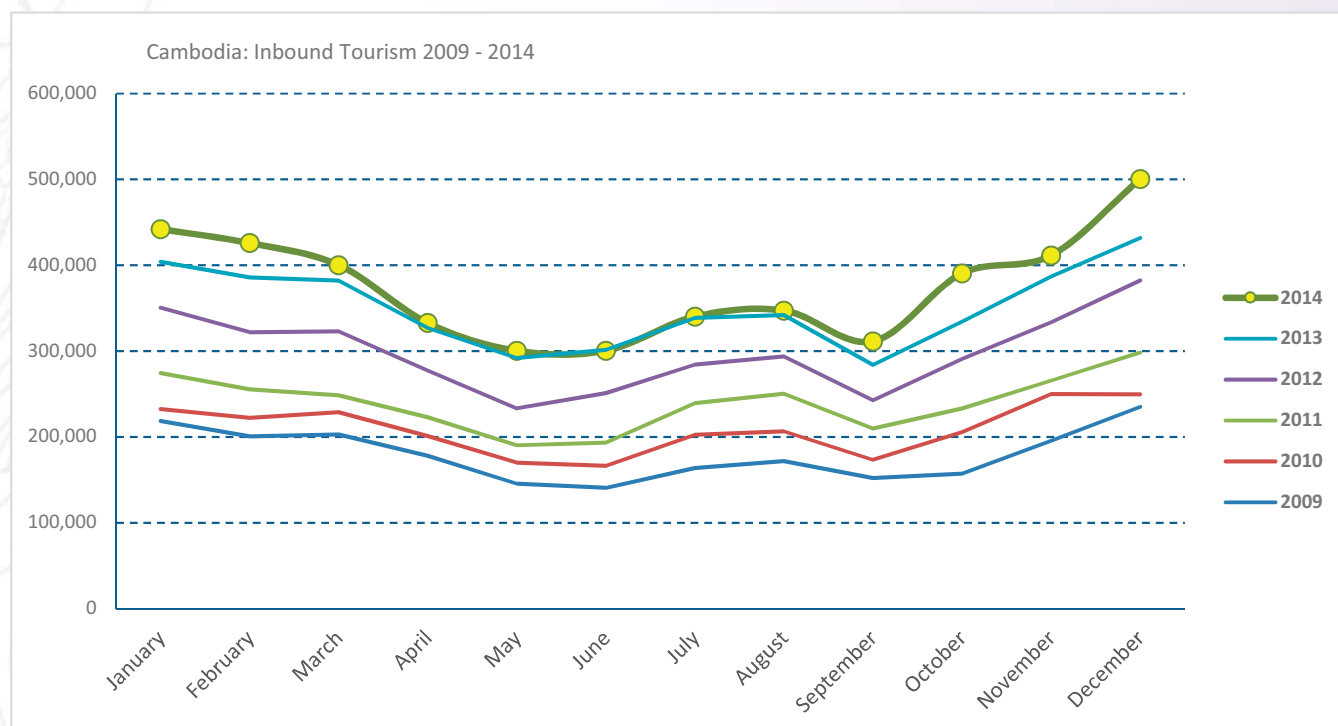


INBOUND AND OUTBOUND TOURISM



International Tourist Arrivals to Cambodia by Months in 2009 - 2014

Months	2009	2010	2011	2012	2013	2014	Change (%)				
							10/09	11/10	12/11	13/12	2014*/13
Q1	622,288	683,692	778,467	995,210	1,172,072	1,267,922	9.9	13.9	27.8	17.8	8.2
January	218,691	232,590	274,471	350,257	404,106	442,045	6.4	18.0	27.6	15.4	9.4
February	200,789	222,354	255,499	321,870	385,760	425,801	10.7	14.9	26.0	19.8	10.4
March	202,808	228,748	248,497	323,083	382,206	400,076	12.8	8.6	30.0	18.3	4.7
Q2	464,230	537,464	606,562	761,442	920,527	933,446	15.8	12.9	25.5	20.9	1.4
April	177,955	200,965	223,032	277,304	327,000	332,690	12.9	11.0	24.3	17.9	1.7
May	145,564	170,164	190,258	233,220	292,115	300,302	16.9	11.8	22.6	25.3	2.8
June	140,711	166,335	193,272	250,918	301,412	300,454	18.2	16.2	29.8	20.1	-0.3
Q3	487,422	582,024	699,760	820,888	964,612	998,690	19.4	20.2	17.3	17.5	3.5
July	163,817	202,349	239,527	284,282	338,761	340,091	23.5	18.4	18.7	19.2	0.4
August	171,668	206,563	250,429	293,859	342,064	347,211	20.3	21.2	17.3	16.4	1.5
September	151,937	173,112	209,804	242,747	283,787	311,388	13.9	21.2	15.7	16.9	9.7
Q4	587,637	705,109	797,073	1,006,767	1,152,954	1,302,717	20.0	13.0	26.3	14.5	13.0
October	157,105	205,515	233,190	290,959	334,410	390,637	30.8	13.5	24.8	14.9	16.8
November	195,570	249,892	265,539	333,482	386,737	411,501	27.8	6.3	25.6	16.0	6.4
December	234,962	249,702	298,344	382,326	431,807	500,579	6.3	19.5	28.1	12.9	15.9
Total	2,161,577	2,508,289	2,881,862	3,584,307	4,210,165	4,502,775	16.0	14.9	24.4	17.5	7.0



International Tourist Arrivals to Cambodia by Country of Residence in 2014 (by all mean of transportations)

Regions Country of Residence	2014												Total	Share (%)
	Jan	Feb	Mar	Apr	May	Jun	Jul	Aug	Sep	Oct	Nov	Dec		2014*
GRAND TOTAL	442,045	425,801	400,076	332,690	300,302	300,454	340,091	347,211	311,388	390,637	411,501	500,579	4,502,775	100.0
Asia and the Pacific	308,971	308,914	293,726	254,715	245,437	250,954	267,232	279,005	267,173	324,034	310,171	388,250	3,498,582	77.7
ASEAN	126,739	137,670	159,827	149,830	158,280	160,435	158,180	160,929	160,628	209,407	179,719	230,253	1,991,897	44.2
Brunei Darussalam	66	66	97	62	73	127	57	82	48	67	101	144	990	0.0
Indonesia	2,624	2,712	2,618	2,642	3,614	2,856	3,435	2,944	2,594	2,924	3,120	3,572	35,655	0.8
Lao PDR	33,840	30,828	34,355	23,566	31,452	33,649	43,009	34,924	41,924	51,704	44,851	56,089	460,191	10.2
Malaysia	9,059	10,733	12,978	11,413	12,182	12,857	11,604	10,594	10,625	13,533	12,519	16,340	144,437	3.2
Myanmar	388	326	464	799	589	487	400	439	414	394	655	681	6,036	0.1
Philippines	9,759	8,822	9,297	9,893	10,631	8,054	4,698	5,458	5,316	5,582	5,960	10,005	93,475	2.1
Singapore	4,054	3,754	5,387	4,180	5,625	7,304	4,824	4,695	4,865	5,809	7,463	7,895	65,855	1.5
Thailand	15,936	16,601	19,656	18,524	19,027	16,504	19,484	29,180	28,263	38,387	24,578	33,317	279,457	6.2
Vietnam	51,013	63,828	74,975	78,751	75,087	78,597	70,669	72,613	66,579	91,007	80,472	102,210	905,801	20.1
Eastern Asia	158,726	157,117	119,272	89,656	75,470	77,079	91,603	105,087	89,715	99,286	112,993	132,277	1,308,281	29.1
China (RPC)	51,200	61,597	50,071	41,870	35,919	34,373	43,215	46,637	42,448	48,135	52,395	52,475	560,335	12.4
Hong Kong SAR	708	547	464	465	553	924	572	734	758	843	1,318	1,961	9,847	0.2
Japan	20,699	21,760	24,434	13,685	13,282	13,607	14,212	21,950	17,494	13,958	17,967	22,740	215,788	4.8
Korea (ROK)	77,137	64,116	36,463	25,558	18,120	20,661	25,860	27,233	21,600	28,159	33,430	46,087	424,424	9.4
Mongolia	50	31	31	22	21	32	49	46	18	14	14	31	359	0.0
Taiwan, China	8,932	9,066	7,809	8,056	7,575	7,482	7,695	8,487	7,397	8,177	7,869	8,983	97,528	2.2
Southern Asia	3,142	2,286	2,686	2,596	2,723	2,623	2,796	3,094	2,938	3,401	3,428	4,017	35,730	0.8
Afghanistan	13	36	49	16	9	50	4	9	7	6	7	8	214	0.0
Bangladesh	129	117	88	121	122	168	184	253	204	264	236	111	1,997	0.0
Bhutan	16	3	4	4	16	14	4	5	10	8	9	17	110	0.0
India	2,635	1,786	2,211	2,013	2,145	2,043	2,262	2,373	2,325	2,702	2,661	3,373	28,529	0.6
Nepal	107	116	113	187	134	143	137	142	143	144	198	178	1,742	0.0
Pakistan	101	97	90	123	107	76	83	115	93	115	157	168	1,325	0.0
Srilanka	141	131	131	132	190	129	122	197	156	162	160	162	1,813	0.0
Western Asia	761	466	316	206	157	132	195	172	134	172	276	317	3,304	0.1
Kazakhstan	686	410	277	169	122	94	132	124	100	137	203	248	2,702	0.1
Uzbekistan	75	56	39	37	35	38	63	48	34	35	73	69	602	0.0
Oceania	19,350	11,207	11,324	12,187	8,584	10,274	14,225	9,405	13,406	11,245	13,413	20,958	155,578	3.5
Australia	16,893	9,883	9,881	10,562	7,204	8,799	12,032	7,989	11,926	9,578	11,623	17,797	134,167	3.0
Fiji	11	14	20	12	14	7	5	11	13	6	20	19	152	0.0
New Zealand	2,446	1,310	1,423	1,613	1,366	1,468	2,188	1,405	1,467	1,661	1,770	3,142	21,259	0.5
Other Asia & the Pacific	253	168	301	240	223	411	233	318	352	523	342	428	3,792	0.1
Europe	96,898	86,326	76,474	54,854	35,476	30,080	51,051	52,376	29,236	44,822	72,900	78,142	708,635	15.7
Northern Europe	23,694	21,235	19,879	15,699	11,071	10,713	15,749	11,821	8,055	12,794	17,577	21,339	189,626	4.2
Denmark	1,873	2,112	1,299	906	617	497	1,153	440	299	652	836	1,082	11,766	0.3
Finland	1,306	988	754	451	263	285	274	220	275	432	693	1,291	7,232	0.2
Iceland	73	54	153	39	33	37	40	25	64	145	81	88	832	0.0
Ireland	1,132	818	758	741	647	771	1,324	795	375	566	820	795	9,542	0.2
Norway	1,344	1,381	1,105	934	399	436	851	319	326	613	1,027	1,078	9,813	0.2
Sweden	3,176	2,714	1,962	1,166	663	490	863	434	485	864	1,608	2,710	17,135	0.4
United Kingdom	14,790	13,168	13,848	11,462	8,449	8,197	11,244	9,588	6,231	9,522	12,512	14,295	133,306	3.0
Western Europe	36,901	35,434	31,865	23,143	15,015	11,533	23,461	22,614	11,558	18,916	33,126	33,753	297,319	6.6
Austria	1,391	1,342	1,009	629	292	264	611	501	327	401	960	1,115	8,842	0.2
Belgium	1,687	1,652	1,316	1,333	872	640	2,015	1,109	605	902	2,126	1,634	15,891	0.4
France	16,168	16,476	14,866	11,059	7,699	6,214	12,159	12,635	5,001	8,889	14,836	15,050	141,052	3.1
Germany	10,901	10,560	10,581	6,650	3,824	2,601	3,817	5,151	3,955	5,515	10,544	10,044	84,143	1.9
Luxembourg	74	50	46	39	23	26	32	63	14	32	38	84	521	0.0
Monaco	20	1	8	3	1	1	5	2	14	37	4	14	110	0.0
Netherlands	3,450	2,936	2,365	1,849	1,397	1,114	3,264	2,271	1,034	1,707	2,232	2,934	26,553	0.6
Switzerland	3,210	2,417	1,674	1,581	907	673	1,558	882	608	1,433	2,386	2,878	20,207	0.4
Eastern Europe	28,899	23,464	18,922	10,700	6,321	4,409	5,963	4,703	4,703	7,288	14,723	15,029	145,124	3.2
Bulgaria	175	136	175	91	73	33	31	35	40	53	122	187	1,151	0.0
Czech Republic	934	839	655	379	147	150	365	247	114	191	701	680	5,402	0.1
Estonia	268	354	178	68	40	50	94	208	56	112	202	225	1,855	0.0
Hungary	562	550	330	257	104	91	87	108	179	190	465	553	3,476	0.1
Lithuania	287	221	267	83	61	47	34	46	43	103	241	196	1,629	0.0
Poland	1,946	1,973	1,430	566	431	353	560	457	443	738	2,208	1,771	12,876	0.3
Romania	251	223	196	154	110	94	84	105	79	142	240	316	1,994	0.0
Russian Federation	22,713	17,964	14,809	8,520	4,993	3,354	4,372	3,205	3,475	5,308	9,649	10,239	108,601	2.4
Slovakia	377	304	298	240	118	76	116	74	80	163	309	232	2,387	0.1
Ukraine	1,386	900	584	342	244	161	220	218	194	288	586	630	5,753	0.1

International Tourist Arrivals to Cambodia by Country of Residence in 2014

(by all mean of transportations)

Regions Country of Residence	2014												Total	Share (%) 2014*
	Jan	Feb	Mar	Apr	May	Jun	Jul	Aug	Sep	Oct	Nov	Dec		
GRAND TOTAL	442,045	425,801	400,076	332,690	300,302	300,454	340,091	347,211	311,388	390,637	411,501	500,579	4,502,775	100.0
Southern Europe	7,203	6,079	5,536	5,098	2,886	3,039	5,716	12,987	4,721	5,392	7,166	7,675	73,498	1.6
Croatia	149	106	89	54	17	11	34	45	32	28	111	161	837	0.0
Greece	191	215	76	67	50	42	79	154	34	63	108	193	1,272	0.0
Italy	3,789	3,081	2,999	2,066	1,083	1,059	1,510	4,871	1,154	1,542	2,764	3,630	29,548	0.7
Portugal	344	333	281	378	223	204	298	674	263	359	612	669	4,638	0.1
Serbia	108	99	49	42	25	20	21	105	63	36	56	83	707	0.0
Slovenia	171	160	128	58	27	29	63	34	29	65	77	176	1,017	0.0
Spain	1,844	1,573	1,471	1,941	1,233	1,488	3,394	6,833	2,877	2,818	2,989	2,217	30,678	0.7
Turkey	607	512	443	492	228	186	317	271	269	481	449	546	4,801	0.1
Other Europe	201	114	272	214	183	386	162	251	199	432	308	346	3,068	0.1
Americas	33,802	28,652	28,317	21,741	18,214	18,477	20,773	14,682	13,774	20,257	26,735	31,518	276,942	6.2
Argentina	1,197	892	849	572	324	226	184	183	179	307	469	355	5,737	0.1
Brazil	1,587	843	1,050	854	659	402	520	434	380	585	1,189	1,413	9,916	0.2
Canada	6,833	6,757	5,732	3,903	3,579	2,960	3,496	2,195	2,070	3,368	5,395	5,976	52,264	1.2
Chile	655	993	488	507	369	264	310	352	235	305	415	377	5,270	0.1
Colombia	268	106	119	150	138	218	235	163	140	199	229	266	2,231	0.0
Costa Rica	52	17	23	21	23	48	20	28	43	37	44	64	420	0.0
Ecuador	42	29	17	26	31	21	26	22	50	27	23	58	372	0.0
Mexico	393	293	371	501	427	460	680	335	417	474	475	761	5,587	0.1
Peru	70	77	49	78	60	53	84	80	55	76	101	119	902	0.0
United States	22,548	18,529	19,383	14,918	12,092	13,596	15,080	10,672	10,022	14,554	18,072	21,900	191,366	4.2
Uruguay	28	35	38	66	397	25	21	18	20	21	50	20	739	0.0
Other Americas	129	81	198	145	115	204	117	200	163	304	273	209	2,138	0.0
Africa	631	382	403	428	481	433	483	445	377	490	537	1,122	6,212	0.1
Cameroon	14	11	9	10	14	13	14	14	5	11	8	9	132	0.0
Congo	6	1	5	7	4	1	3	5	6	3	6	12	59	0.0
Ghana	6	43	1	5	5	3	1	6	2	5	10	8	95	0.0
Kenya	21	18	21	14	13	29	29	22	27	13	13	30	250	0.0
Liberia	6	3	1	2	0	1	2	0	7	1	9	17	49	0.0
Nigeria	48	36	44	61	45	54	50	46	59	63	84	54	644	0.0
Sudan	15	0	6	6	7	5	3	11	7	5	6	13	84	0.0
South Africa	465	244	282	285	361	274	359	302	228	336	333	905	4,374	0.1
Uganda	2	4	6	7	4	6	3	6	6	4	17	13	78	0.0
Other Africa	48	22	28	31	28	47	19	33	30	49	51	61	447	0.0
Middle East	1,743	1,527	1,156	952	694	510	552	703	828	1,034	1,158	1,547	12,404	0.3
Egypt	27	25	22	25	31	22	27	35	26	31	26	44	341	0.0
Iran	62	43	74	36	34	38	39	35	38	102	94	135	730	0.0
Iraq	3	5	8	6	13	7	4	20	11	12	10	7	106	0.0
Israel	1,459	1,296	911	717	445	268	386	427	558	753	907	1,190	9,317	0.2
Kuwait	87	102	56	88	86	81	32	111	99	58	36	40	876	0.0
Oman	28	10	13	6	14	11	18	13	10	6	10	21	160	0.0
Palestine	2	9	9	9	2	8	7	5	4	2	5	11	73	0.0
Qatar	2	6	2	2	5	0	1	3	28	3	7	8	67	0.0
Saudi Arabia	17	6	14	7	22	23	7	13	6	21	15	13	164	0.0
United Arab Emirates	7	2	6	4	11	7	17	13	19	4	1	13	104	0.0
Yemen	15	10	22	28	17	9	3	5	6	3	13	19	150	0.0
Other Middle East	34	13	19	24	14	36	11	23	23	39	34	46	316	0.0

International Tourist Arrivals to Cambodia by Purpose of Visit in 2014

(by all mean of transportations)

Regions Country of Residence	2013				2014		share	change
	Purpose of Visit				Total	Female	(%)	(%)
	Holiday	Business	Other				2014*	2014*/13
GRAND TOTAL	4,210,165	4,255,231	205,667	41,877	4,502,775	1,985,746	100.0	7.0
Asia and the Pacific	3,231,892	3,301,596	167,999	29,190	3,498,785	1,546,358	77.7	8.3
ASEAN (South-East Asia)	1,831,507	1,918,130	53,439	20,328	1,991,897	876,513	44.2	8.8
Brunei Darussalam	814	894	21	75	990	419	0.0	21.6
Indonesia	28,199	29,103	6,236	316	35,655	9,932	0.8	26.4
Lao PDR	414,531	457,615	302	2,274	460,191	248,793	10.2	11.0
Malaysia	130,704	135,192	9,021	224	144,437	49,871	3.2	10.5
Myanmar	5,089	5,392	454	190	6,036	2,434	0.1	18.6
Philippines	118,999	84,894	7,866	715	93,475	51,002	2.1	-21.4
Singapore	57,808	62,554	3,076	225	65,855	23,247	1.5	13.9
Thailand	221,259	262,127	12,223	5,107	279,457	104,931	6.2	26.3
Vietnam	854,104	880,359	14,240	11,202	905,801	385,884	20.1	6.1
North-East Asia	1,211,004	1,200,737	101,917	5,627	1,308,281	587,851	29.1	8.0
China (RPC)	463,123	499,999	58,166	2,170	560,335	255,628	12.4	21.0
Hong Kong SAR	8,576	9,624	203	20	9,847	4,828	0.2	14.8
Japan	206,932	199,196	14,749	1,843	215,788	86,853	4.8	4.3
Korea (ROK)	435,009	407,179	15,699	1,546	424,424	201,381	9.4	-2.4
Mongolia	372	320	15	24	359	171	0.0	-3.5
Taiwan, China	96,992	84,419	13,085	24	97,528	38,990	2.2	0.6
Southern Asia	29,910	30,641	4,132	957	35,730	10,255	0.8	19.5
Afghanistan	273	188	12	14	214	52	0.0	-21.6
Bangladesh	1,611	1,520	293	184	1,997	276	0.0	24.0
Bhutan	101	80	4	26	110	40	0.0	8.9
India	23,610	25,306	2,767	456	28,529	8,869	0.6	20.8
Nepal	1,475	1,402	246	94	1,742	371	0.0	18.1
Pakistan	1,180	867	363	95	1,325	207	0.0	12.3
Srilanka	1,660	1,278	447	88	1,813	440	0.0	9.2
Western Asia	3,125	3,058	218	28	3,304	1,760	0.1	5.7
Kazakhstan	2,511	2,518	173	11	2,702	1,417	0.1	7.6
Uzbekistan	614	540	45	17	602	343	0.0	-2.0
Oceania	152,712	146,053	7,756	1,769	155,578	68,183	3.5	1.9
Australia	132,028	126,233	6,389	1,545	134,167	59,202	3.0	1.6
Fiji	107	121	18	13	152	46	0.0	42.1
New Zealand	20,577	19,699	1,349	211	21,259	8,935	0.5	3.3
Other Asia & the Pacific	3,634	2,977	537	481	3,995	1,796	0.1	9.9
Europe	698,157	677,621	24,340	6,744	708,705	310,345	15.7	1.5
Northern Europe	178,063	180,723	7,188	1,715	189,626	77,372	4.2	6.5
Denmark	10,485	11,287	329	150	11,766	4,868	0.3	12.2
Finland	6,731	6,826	300	106	7,232	2,772	0.2	7.4
Iceland	788	791	28	13	832	317	0.0	5.6
Ireland	10,245	9,234	244	64	9,542	4,081	0.2	-6.9
Norway	9,482	9,471	258	84	9,813	4,132	0.2	3.5
Sweden	16,413	16,476	476	183	17,135	6,612	0.4	4.4
United Kingdom	123,919	126,638	5,553	1,115	133,306	54,590	3.0	7.6
Western Europe	287,434	281,162	12,388	3,769	297,319	125,090	6.6	3.4
Austria	9,091	8,628	180	34	8,842	3,642	0.2	-2.7
Belgium	16,171	14,952	654	285	15,891	6,408	0.4	-1.7
France	131,486	131,069	7,790	2,193	141,052	59,872	3.1	7.3
Germany	81,565	81,173	2,188	782	84,143	35,118	1.9	3.2
Luxembourg	571	498	12	11	521	188	0.0	-8.8
Monaco	103	94	12	4	110	47	0.0	6.8
Netherlands	28,076	25,442	818	293	26,553	11,239	0.6	-5.4
Switzerland	20,371	19,306	734	167	20,207	8,576	0.4	-0.8
Central / Eastern Europe	165,452	142,379	2,361	384	145,124	75,026	3.2	-12.3
Bulgaria	961	1,117	13	21	1,151	607	0.0	19.8
Czech Republic	4,845	5,284	84	34	5,402	2,291	0.1	11.5
Estonia	1,366	1,786	54	15	1,855	754	0.0	35.8
Hungary	2,947	3,371	66	39	3,476	1,514	0.1	18.0
Lithuania	1,608	1,604	19	6	1,629	825	0.0	1.3
Poland	12,507	12,709	109	58	12,876	6,347	0.3	3.0
Romania	1,526	1,879	98	17	1,994	1,041	0.0	30.7
Russian Federation	131,675	106,753	1,695	153	108,601	57,599	2.4	-17.5
Slovakia	2,098	2,269	88	30	2,387	1,056	0.1	13.8
Ukraine	5,919	5,607	135	11	5,753	2,992	0.1	-2.8

International Tourist Arrivals to Cambodia by Purpose of Visit in 2014

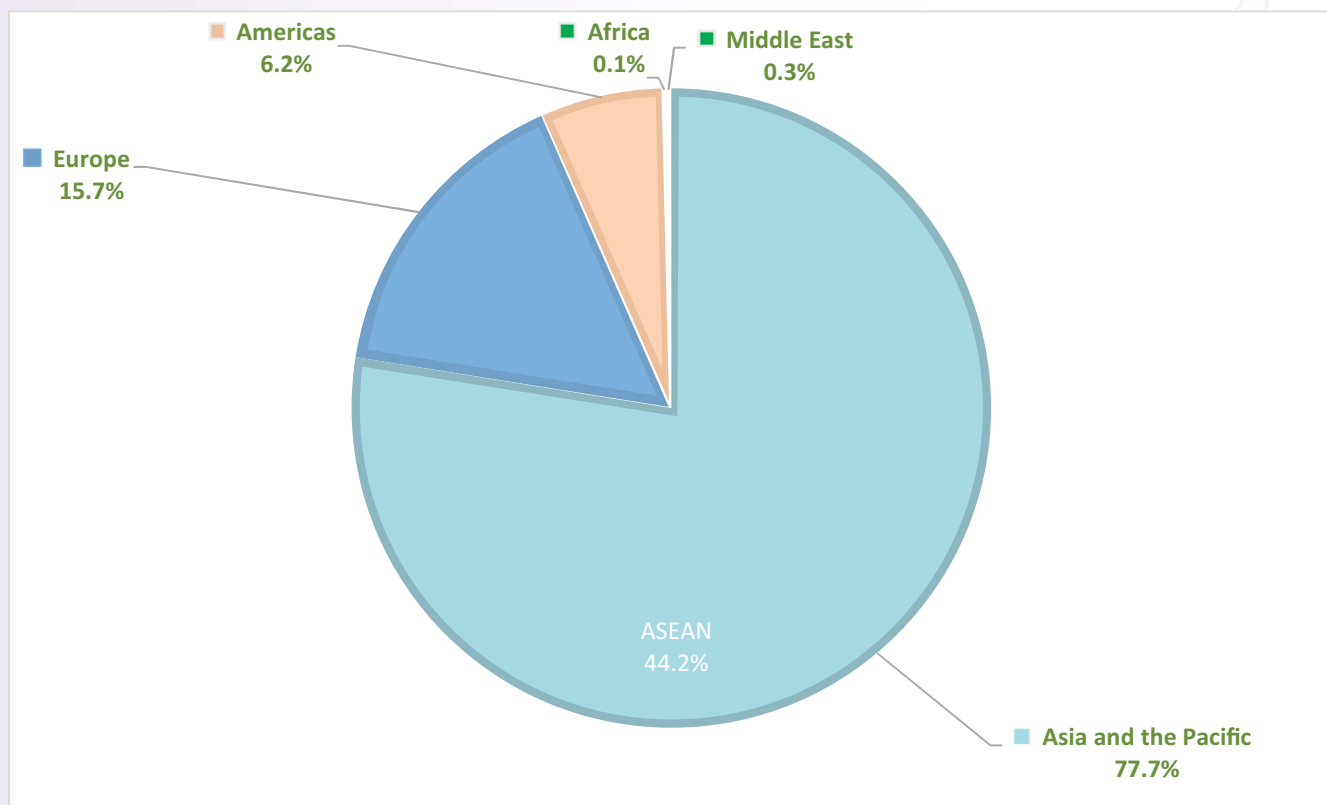
(by all mean of transportations)

Regions Country of Residence	2014						share	change
	2013	Purpose of Visit			Total	Female	(%)	(%)
		Holiday	Business	Other			2014*	2014*/13
GRAND TOTAL	4,210,165	4,255,231	205,667	41,877	4,502,775	1,985,746	100.0	7.0
Southern Europe	64,093	70,973	1,939	586	73,498	31,552	1.6	14.7
Croatia	798	801	25	11	837	403	0.0	4.9
Greece	1,135	1,210	53	9	1,272	488	0.0	12.1
Italy	25,196	28,481	842	225	29,548	12,010	0.7	17.3
Portugal	4,087	4,503	113	22	4,638	1,971	0.1	13.5
Serbia	613	668	25	14	707	352	0.0	15.3
Slovenia	1,221	989	25	3	1,017	440	0.0	-16.7
Spain	26,372	30,016	482	180	30,678	14,327	0.7	16.3
Turkey	4,671	4,305	374	122	4,801	1,561	0.1	2.8
Other Europe	3,115	2,384	464	290	3,138	1,305	0.1	0.7
Americas	263,175	258,806	12,370	5,493	276,669	122,121	6.1	5.1
Argentina	5,763	5,649	48	40	5,737	2,803	0.1	-0.5
Brazil	6,860	9,723	129	64	9,916	4,836	0.2	44.5
Canada	50,867	49,568	2,234	462	52,264	23,204	1.2	2.7
Chile	3,969	5,101	138	31	5,270	2,603	0.1	32.8
Colombia	1,803	2,165	34	32	2,231	1,115	0.0	23.7
Costa Rica	305	403	8	9	420	184	0.0	37.7
Ecuador	283	344	18	10	372	186	0.0	31.4
Mexico	4,966	5,510	43	34	5,587	2,757	0.1	12.5
Peru	677	819	37	46	902	432	0.0	33.2
United States	184,964	177,208	9,538	4,620	191,366	82,805	4.2	3.5
Uruguay	618	729	4	6	739	362	0.0	19.6
Other Americas	2,100	1,587	139	139	1,865	834	0.0	-11.2
Africa	5,902	5,413	561	238	6,212	2,495	0.1	5.3
Cameroon	147	109	8	15	132	29	0.0	-10.2
Congo	58	40	7	12	59	19	0.0	1.7
Ghana	134	77	7	11	95	30	0.0	-29.1
Kenya	298	198	16	36	250	119	0.0	-16.1
Liberia	52	43	4	2	49	8	0.0	-5.8
Nigeria	605	384	226	34	644	60	0.0	6.4
Sudan	60	61	5	18	84	21	0.0	40.0
South Africa	4,043	4,109	223	42	4,374	1,988	0.1	8.2
Uganda	66	65	9	4	78	26	0.0	18.2
Other Africa	439	327	56	64	447	195	0.0	1.8
Middle East	11,039	11,795	397	212	12,404	4,427	0.3	12.4
Egypt	329	290	36	15	341	73	0.0	3.6
Iran	655	666	48	16	730	188	0.0	11.5
Iraq	134	98	4	4	106	26	0.0	-20.9
Israel	7,684	8,996	242	79	9,317	3,847	0.2	21.3
Kuwait	1,121	845	3	28	876	50	0.0	-21.9
Oman	199	157	1	2	160	22	0.0	-19.6
Palestine	94	68	4	1	73	17	0.0	-22.3
Qatar	95	55	8	4	67	17	0.0	-29.5
Saudi Arabia	150	150	11	3	164	23	0.0	9.3
United Arab Emirates	146	101	2	1	104	10	0.0	-28.8
Yemen	144	140	4	6	150	33	0.0	4.2
Other Middle East	288	229	34	53	316	121	0.0	9.7

International Tourist Arrivals to Cambodia by Regions in 2014

(by all means of transportation)

Months	Asia & the Pacific		Europe	Americas	Africa	Middle East	Total
		ASEAN					
Q1	911,611	424,236	259,698	90,771	1,416	4,426	1,267,922
January	308,971	126,739	96,898	33,802	631	1,743	442,045
February	308,914	137,670	86,326	28,652	382	1,527	425,801
March	293,726	159,827	76,474	28,317	403	1,156	400,076
Q2	751,106	468,545	120,410	58,432	1,342	2,156	933,446
April	254,715	149,830	54,854	21,741	428	952	332,690
May	245,437	158,280	35,476	18,214	481	694	300,302
June	250,954	160,435	30,080	18,477	433	510	300,454
Q3	813,410	479,737	132,663	49,229	1,305	2,083	998,690
July	267,232	158,180	51,051	20,773	483	552	340,091
August	279,005	160,929	52,376	14,682	445	703	347,211
September	267,173	160,628	29,236	13,774	377	828	311,388
Q4	1,022,455	619,379	195,864	78,510	2,149	3,739	1,302,717
October	324,034	209,407	44,822	20,257	490	1,034	390,637
November	310,171	179,719	72,900	26,735	537	1,158	411,501
December	388,250	230,253	78,142	31,518	1,122	1,547	500,579
Total	3,498,582	1,991,897	708,635	276,942	6,212	12,404	4,502,775
share (%)	77.7	44.2	15.7	6.2	0.1	0.3	100.0



International Tourist Arrivals to Cambodia by Mode of Arrivals in 2013 - 2014

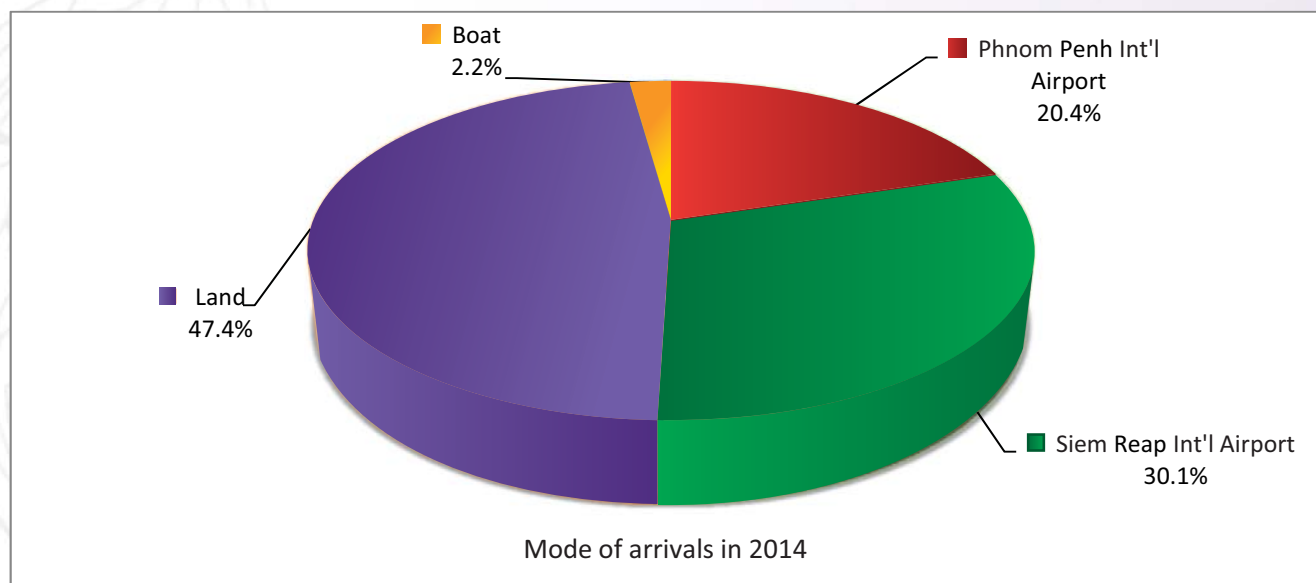
(by all means of transportation)

Months	2013				2014				Change (%) 2014*/13
	Air	Land	Boat	Total	Air	Land	Boat	Total	
Q1	611,160	535,718	25,194	1,172,072	698,969	536,588	32,365	1,267,922	8.2
January	215,210	179,273	9,623	404,106	253,930	177,854	10,261	442,045	9.4
February	203,453	174,036	8,271	385,760	240,606	175,369	9,826	425,801	10.4
March	192,497	182,409	7,300	382,206	204,433	183,365	12,278	400,076	4.7
Q2	398,055	510,162	12,310	920,527	438,215	482,358	12,873	933,446	1.4
April	145,348	175,812	5,840	327,000	161,320	165,739	5,631	332,690	1.7
May	126,255	161,411	4,449	292,115	137,432	160,139	2,731	300,302	2.8
June	126,452	172,939	2,021	301,412	139,463	156,480	4,511	300,454	-0.3
Q3	428,012	522,759	13,841	964,612	497,472	480,425	20,793	998,690	3.5
July	144,649	190,235	3,877	338,761	169,351	164,703	6,037	340,091	0.4
August	153,905	183,315	4,844	342,064	179,657	160,159	7,395	347,211	1.5
September	129,458	149,209	5,120	283,787	148,464	155,563	7,361	311,388	9.7
Q4	580,431	548,815	23,708	1,152,954	638,837	632,961	30,919	1,302,717	13.0
October	156,060	171,198	7,152	334,410	176,096	206,747	7,794	390,637	16.8
November	197,409	181,464	7,864	386,737	217,125	185,244	9,132	411,501	6.4
December	226,962	196,153	8,692	431,807	245,616	240,970	13,993	500,579	15.9
Total	2,017,658	2,117,454	75,053	4,210,165	2,273,493	2,132,332	96,950	4,502,775	7.0

International Tourist Arrivals to Cambodia by Mode of Arrivals in 2010 - 2014

(by all means of transportation)

Mode of arrivals						Share (%) 2014*	Change (%)			
	2010	2011	2012	2013	2014		11/10	12/11	13/12	2014*/13
Air	1,304,300	1,480,407	1,722,083	2,017,658	2,273,493	50.5	13.5	16.3	17.2	12.7
Phnom Penh Int'l Airport	591,628	645,235	716,584	836,377	917,800	20.4	9.1	11.1	16.7	9.7
Siem Reap Int'l Airport	712,672	835,172	1,005,499	1,181,281	1,355,693	30.1	17.2	20.4	17.5	14.8
Land & waterways	1,203,988	1,401,455	1,862,224	2,192,507	2,229,282	49.5	16.4	32.9	17.7	1.7
Land	1,125,974	1,320,311	1,785,726	2,117,454	2,132,332	47.4	17.3	35.3	18.6	0.7
Boat	78,014	81,144	76,498	75,053	96,950	2.2	4.0	-5.7	-1.9	29.2
Total	2,508,288	2,881,862	3,584,307	4,210,165	4,502,775	100.0	14.9	24.4	17.5	7.0



Top Ten Generating Market from 2008 - 2014

2008				
rank		arrivals	share (%)	change (%)
1	Korea	266,525	12.5	-19.2
2	Vietnam	209,516	9.9	67.0
3	Japan	163,806	7.7	1.1
4	USA	145,079	6.8	5.5
5	China	129,626	6.1	9.5
6	Thailand	109,020	5.1	7.3
7	United Kingdom	98,093	4.6	8.8
8	France	97,517	4.6	16.0
9	Australia	84,957	4.0	18.6
10	Taiwan, China	83,000	3.9	-29.8

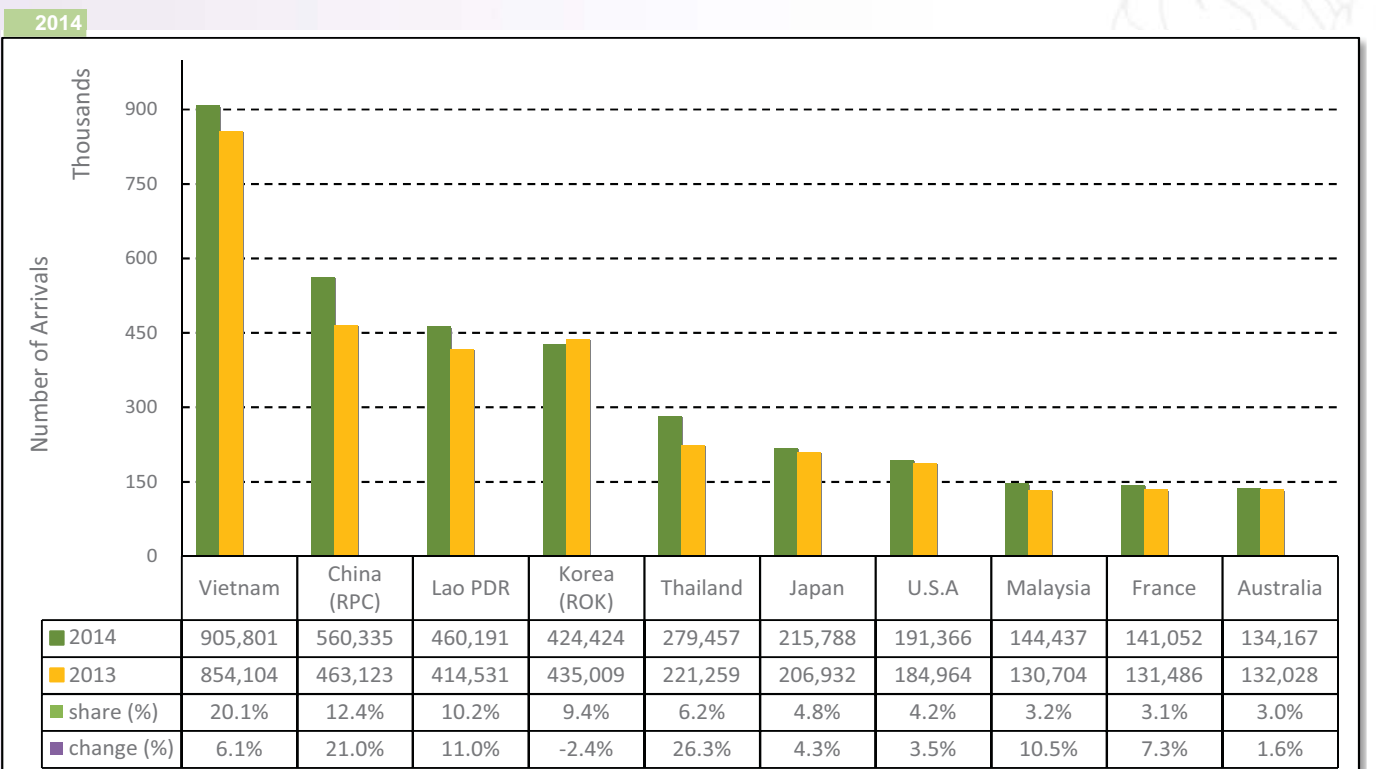
2009				
rank		arrivals	share (%)	change (%)
1	Vietnam	316,202	14.6	50.9
2	Korea	197,725	9.2	-25.8
3	U.S.A	148,482	6.9	2.4
4	Japan	146,286	6.8	-10.7
5	China	128,210	5.9	-1.1
6	United Kingdom	106,837	4.9	8.9
7	France	105,437	4.9	8.1
8	Thailand	102,018	4.7	-6.4
9	Lao PDR	94,181	4.4	54.6
10	Australia	84,581	3.9	-0.4

2010				
rank		arrivals	share (%)	change (%)
1	Vietnam	514,289	20.5	62.6
2	Korea	289,702	11.6	46.5
3	China	177,636	7.1	38.6
4	Japan	151,795	6.1	3.8
5	Thailand	149,108	5.9	16.3
6	U.S.A	146,005	5.8	-1.7
7	France	113,285	4.5	7.4
8	U.K	103,067	4.1	-3.5
9	Australia	93,598	3.7	10.7
10	Taiwan, China	91,229	3.6	26.5

2011				
rank		arrivals	share (%)	change (%)
1	Vietnam	614,090	21.3	19.4
2	Korea	342,810	11.9	18.3
3	China	247,197	8.6	39.2
4	Japan	161,804	5.6	6.6
5	U.S.A	153,953	5.3	5.4
6	Lao PDR	128,525	4.5	39.3
7	France	117,408	4.1	3.6
8	Thailand	116,758	4.1	-21.7
9	Australia	105,010	3.6	12.2
10	U.K	104,052	3.6	1.0

2012				
rank		arrivals	share (%)	change (%)
1	Vietnam	763,136	21.3	24.3
2	Korea (ROK)	411,491	11.5	20
3	China (RPC)	333,894	9.3	35.1
4	Lao PDR	254,022	7.1	97.6
5	Thailand	201,422	5.6	72.5
6	Japan	179,327	5	10.8
7	U.S.A	173,076	4.8	12.4
8	France	121,175	3.4	3.2
9	Australia	117,729	3.3	12.1
10	Malaysia	116,764	3.3	13.4

2013				
rank		arrivals	share (%)	change (%)
1	Vietnam	854,104	20.3	11.9
2	China (RPC)	463,123	11.0	38.7
3	Korea (ROK)	435,009	10.3	5.7
4	Lao PDR	414,531	9.8	63.2
5	Thailand	221,259	5.3	9.8
6	Japan	206,932	4.9	15.4
7	U.S.A	184,964	4.4	6.9
8	Australia	132,028	3.1	12.1
9	Russia	131,675	3.1	32.0
10	France	131,486	3.1	8.5



International Tourist Arrivals to Cambodia by International Border Check-points in 2014

No. International border check-points	Months												TOTAL	share (%)
	Jan	Feb	Mar	Apr	May	Jun	Jul	Aug	Sep	Oct	Nov	Dec		
Grand Total	442,045	425,801	400,076	332,690	300,302	300,454	340,091	347,211	311,388	390,637	411,501	500,579	4,502,775	100.0
Air	253,930	240,606	204,433	161,320	137,432	139,463	169,351	179,657	148,464	176,096	217,125	245,616	2,273,493	50.5
Phnom Penh Int'l Airport	84,436	83,167	77,468	67,435	64,217	68,530	76,980	73,895	66,614	75,375	87,488	92,195	917,800	20.4
Siem Reap Int'l Airport	169,494	157,439	126,965	93,885	73,215	70,933	92,371	105,762	81,850	100,721	129,637	153,421	1,355,693	30.1
Lands and Water ways	188,115	185,195	195,643	171,370	162,870	160,991	170,740	167,554	162,924	214,541	194,376	254,963	2,229,282	49.5
Lands	183,599	181,288	190,091	170,537	162,814	159,895	167,999	165,913	158,956	211,632	191,713	246,584	2,191,021	48.7
Water ways	4,516	3,907	5,552	833	56	1,096	2,741	1,641	3,968	2,909	2,663	8,379	38,261	0.8
1 Cambodia - Thailand	122,275	102,084	116,427	89,274	92,339	79,157	89,760	73,943	96,812	133,803	101,798	134,658	1,232,330	27.4
Poi Pet	58,538	48,891	45,876	34,910	31,050	23,996	38,040	27,120	47,251	63,827	52,243	65,071	536,813	11.9
Cham Yeam	8,153	6,061	8,207	7,078	4,729	2,041	2,731	3,864	3,633	5,530	4,666	5,691	62,384	1.4
Prom	16,939	14,294	17,704	14,841	17,766	16,195	17,515	12,740	9,526	22,321	10,085	16,415	186,341	4.1
Daung	31,388	25,850	35,736	29,090	35,205	34,081	26,493	26,791	26,434	32,103	30,815	31,338	365,324	8.1
O'Smach	2,847	2,285	2,772	2,044	2,064	1,987	1,800	1,508	2,635	2,638	1,955	3,503	28,038	0.6
Chorm	1,058	2,071	1,947	1,179	1,525	857	1,215	1,920	5,381	6,670	1,701	6,171	31,695	0.7
Sihanoukville (Int'l sea port)	3,352	2,632	4,185	132	0	0	1,966	0	1,952	714	333	6,469	21,735	0.5
2 Cambodia - Vietnam	62,525	77,019	74,744	78,279	66,453	78,559	77,633	89,757	63,181	77,291	87,497	115,378	948,316	21.1
Bavet	38,899	49,777	46,038	51,620	42,246	47,892	52,825	51,725	37,438	45,965	43,306	71,220	578,951	12.9
Phnom Den	2,763	2,942	3,237	2,813	3,013	4,844	3,954	4,518	3,400	4,675	5,631	4,252	46,042	1.0
Trapaing Plong	1,582	2,747	2,460	2,332	2,519	2,424	2,246	6,223	2,578	2,852	6,161	7,169	41,293	0.9
Trapaing Sré	3,315	3,644	3,861	4,218	3,791	5,247	4,507	5,775	4,505	4,885	4,625	5,590	53,963	1.2
Prek Chak	3,155	3,704	3,179	3,509	3,119	4,201	2,816	3,625	2,294	2,947	5,939	5,990	44,478	1.0
Oya Dao	3,638	4,359	5,062	5,368	6,166	5,393	4,317	5,922	3,609	4,324	8,845	8,669	65,672	1.5
Banteay Chak Krey	1,186	1,585	1,529	1,645	1,476	2,422	1,559	3,020	2,558	3,077	2,630	3,593	26,280	0.6
Prey Vor	1,078	1,067	1,285	1,275	1,392	1,625	1,338	1,554	1,390	1,486	1,561	1,371	16,422	0.4
Koh Rorka	5,745	5,919	6,726	4,798	2,675	3,415	3,296	5,754	3,393	4,885	6,469	5,614	58,689	1.3
Kaam Samnor	66	105	127	74	56	787	55	781	880	944	847	720	5,442	0.1
Phnom Penh Port	1,098	1,170	1,240	627	0	309	720	860	1,136	1,251	1,483	1,190	11,084	0.2
3 Cambodia - Lao	3,315	6,092	4,472	3,817	4,078	3,275	3,347	3,854	2,931	3,447	5,081	4,927	48,636	1.1
Trapaing Kreal	3,315	6,092	4,472	3,817	4,078	3,275	3,347	3,854	2,931	3,447	5,081	4,927	48,636	1.1

International Tourist Arrivals to Cambodia by International Border Check-points in 2014 (by purpose of visit)

International Border No. Check-points	2013	2014			Total	share (%) 2014*	change (%) 2014*/13
		Purpose of Visit					
		Holiday	Business	Other			
Grand Total	4,210,165	4,255,231	205,667	41,877	4,502,775	100.0	7.0
Air	2,017,658	2,102,783	154,905	15,805	2,273,493	50.5	12.7
Phnom Penh Int'l Airport	836,377	835,210	73,563	9,027	917,800	20.4	9.7
Siem Reap Int'l Airport	1,181,281	1,267,573	81,342	6,778	1,355,693	30.1	14.8
Lands and Water ways	2,192,507	2,152,448	50,762	26,072	2,229,282	49.5	1.7
Lands	2,165,570	2,115,500	50,214	25,307	2,191,021	48.7	1.2
Water ways	26,937	36,948	548	765	38,261	0.8	42.0
1 Cambodia - Thailand	1,026,655	1,180,767	32,481	19,082	1,232,330	27.4	20.0
Poi Pet	585,894	515,340	18,788	2,684	536,813	11.9	-8.4
Cham Yeam	93,174	59,265	1,248	1,872	62,384	1.4	-33.0
Prom	172,121	177,024	3,727	5,590	186,341	4.1	8.3
Daung	415,393	350,711	7,306	7,306	365,324	8.1	-12.1
O'Smach	26,794	26,916	561	561	28,038	0.6	4.6
Chorm	17,938	30,427	634	634	31,695	0.7	76.7
Sihanoukville (Int'l sea port)	16,408	21,083	217	435	21,735	0.5	32.5
2 Cambodia - Vietnam	791,621	923,531	18,086	6,698	948,316	21.1	19.8
Bavet	537,564	561,582	14,474	2,895	578,951	12.9	7.7
Phnom Den	38,227	44,661	921	460	46,042	1.0	20.4
Trapaing Plong	26,854	40,054	826	413	41,293	0.9	53.8
Trapaing Sré	42,458	52,344	1,079	540	53,963	1.2	27.1
Prek Chak	30,167	44,033	89	356	44,478	1.0	47.4
Oya Dao	57,118	65,015	131	525	65,672	1.5	15.0
Banteay Chak Krey	17,122	25,781	53	447	26,280	0.6	53.5
Prey Vor	9,670	16,094	66	263	16,422	0.4	69.8
Kaam Samnor	48,116	58,102	117	470	58,689	1.3	22.0
Koh Rorka	704	5,224	109	109	5,442	0.1	673.0
Phnom Penh Port	9,825	10,641	222	222	11,084	0.2	12.8
3 Cambodia - Lao	46,960	48,150	195	292	48,636	1.1	3.6
Trapaing Kreal	46,960	48,150	195	292	48,636	1.1	3.6

Cambodian Outbound Tourism by Int'l Border Check-points in 2014 (by mode of transports and purpose of visit)

International Border No. Check-points	2013	2014				Total	share	change
		Purpose of Visit			(%)		(%)	
		Holiday	Business	Other	2014*		2014*/13	
Grand Total	871,646	932,030	199	23,680	955,909	100.0	9.7	
Air	217,685	232,513	141	10,415	243,069	25.4	11.7	
Phnom Penh Int'l Airport	210,913	224,965	106	10,337	235,408	24.6	11.6	
Siem Reap Int'l Airport	6,772	7,548	35	78	7,661	0.8	13.1	
Lands and Water ways	653,961	699,517	58	13,265	712,840	74.6	9.0	
Lands	652,135	697,411	58	13,263	710,732	74.4	9.0	
Water ways	1,826	2,106	0	2	2,108	0.2	15.4	
1 Cambodia - Thailand	442,983	474,452	20	2,924	477,396	49.9	7.8	
Poi Pet	343,987	365,336	18	2,271	367,625	38.5	6.9	
Cham Yeam	25,100	26,261	1	265	26,527	2.8	5.7	
Prom	21,293	24,091	0	260	24,351	2.5	14.4	
Daung	36,677	41,221	1	1	41,223	4.3	12.4	
O'Smach	12,955	14,281	0	29	14,310	1.5	10.5	
Chorm	2,971	3,262	0	98	3,360	0.4	13.1	
2 Cambodia - Vietnam	206,072	218,850	36	10,175	229,061	24.0	11.2	
Bavet	185,825	196,270	32	9,519	205,821	21.5	10.8	
Phnom Den	5,716	6,177	1	192	6,370	0.7	11.4	
Trapaing Plong	4,784	5,240	2	106	5,348	0.6	11.8	
Trapaing Sré	1,103	1,294	0	115	1,409	0.1	27.7	
Prek Chak	2,930	3,247	0	66	3,313	0.3	13.1	
Oya Dao	1,409	1,636	1	112	1,749	0.2	24.1	
Banteay Chak Krey	1,936	2,287	0	36	2,323	0.2	20.0	
Prey Vor	494	538	0	27	565	0.1	14.4	
Koh Rorka	49	55	0	0	55	0.0	12.2	
Kaam Samnor	1,800	2,074	0	0	2,074	0.2	15.2	
Phnom Penh Port	26	32	0	2	34	0.0	30.8	
3 Cambodia - Lao	4,906	6,215	2	166	6,383	0.7	30.1	
Trapaing Kreal	4,906	6,215	2	166	6,383	0.7	30.1	

Cambodian Outbound Tourism by Months in 2008 - 2014

Months	Cambodian Outbound Tourism							Change (%)		
	2008	2009	2010	2011	2012	2013	2014	2012/11	2013/12	2014*/13
January	261,007	20,021	37,611	47,641	71,541	71,720	68,618	50.2	0.3	-4.3
February	236,375	19,871	32,818	42,124	59,042	65,259	67,924	40.2	10.5	4.1
March	101,342	21,558	35,666	47,552	57,684	64,565	72,430	21.3	11.9	12.2
April	26,791	29,481	46,323	52,138	70,738	81,998	90,794	35.7	15.9	10.7
May	23,610	30,699	42,055	52,907	63,872	83,715	84,366	20.7	31.1	0.8
June	19,430	24,426	37,844	50,671	66,070	74,035	70,654	30.4	12.1	-4.6
July	17,688	25,746	44,290	64,015	65,590	67,758	85,357	2.5	3.3	26.0
August	20,611	30,934	44,866	74,871	64,786	69,420	81,405	-13.5	7.2	17.3
September	20,860	34,452	45,822	77,264	66,002	65,923	86,031	-14.6	-0.1	30.5
October	19,027	36,550	49,932	64,256	70,435	78,287	81,933	9.6	11.1	4.7
November	20,231	31,857	43,981	66,045	69,977	76,657	86,560	6.0	9.5	12.9
December	18,924	34,103	43,782	70,132	66,181	72,309	79,837	-5.6	9.3	10.4
Total	785,896	339,698	504,990	709,616	791,918	871,646	955,909	11.6	10.1	9.7

International Outbound Tourist Departures by Int'l Border Check Points in 2014 (by mode of transports and purpose of visit)

International Border No. Check Points	2013	2014				Total	share (%) 2014*	change (%) 2014*/13
		Purpose of Visit			Total			
		Holiday	Business	Other				
Grand Total	4,173,597	3,948,017	230,118	33,289	4,211,424	100.0	0.9	
Air	2,012,516	1,870,079	140,080	22,777	2,032,936	48.3	1.0	
Phnom Penh Int'l Airport	853,722	713,586	131,504	19,236	864,326	20.5	1.2	
Siem Reap Int'l Airport	1,158,794	1,156,493	8,576	3,541	1,168,610	27.7	0.8	
Lands and Water ways	2,161,081	2,077,938	90,038	10,512	2,178,488	51.7	0.8	
Lands	2,109,176	2,024,984	90,015	10,438	2,125,437	50.5	0.8	
Water ways	51,905	52,954	23	74	53,051	1.3	2.2	
1 Cambodia - Thailand	1,215,234	1,184,482	34,557	5,431	1,224,470	29.1	0.8	
Poi Pet	648,910	618,503	30,567	4,520	653,590	15.5	0.7	
Cham Yeam	63,995	59,170	3,156	275	62,601	1.5	-2.2	
Prom	172,757	173,572	346	100	174,018	4.1	0.7	
Daung	270,201	272,803	139	256	273,198	6.5	1.1	
O'Smach	24,666	23,635	247	134	24,016	0.6	-2.6	
Chorm	18,168	19,114	97	122	19,333	0.5	6.4	
Sihanoukville (Int'l sea port)	16,537	17,685	5	24	17,714	0.4	7.1	
2 Cambodia - Vietnam	910,561	857,329	55,217	4,853	917,399	21.8	0.8	
Bavet	611,076	572,175	40,358	3,390	615,923	14.6	0.8	
Phnom Den	40,016	26,829	12,508	56	39,393	0.9	-1.6	
Trapaing Plong	30,640	31,231	635	52	31,918	0.8	4.2	
Trapaing Sré	63,354	62,941	256	342	63,539	1.5	0.3	
Prek Chak	40,258	39,016	431	175	39,622	0.9	-1.6	
Oya Dao	55,217	54,614	597	679	55,890	1.3	1.2	
Banteay Chak Krey	21,559	21,197	376	94	21,667	0.5	0.5	
Prey Vor	11,408	12,477	33	4	12,514	0.3	9.7	
Koh Rorka	1,665	1,580	5	11	1,596	0.0	-4.1	
Kaam Samnor	25,474	25,395	10	26	25,431	0.6	-0.2	
Phnom Penh Port	9,894	9,874	8	24	9,906	0.2	0.1	
3 Cambodia - Lao	35,286	36,127	264	228	36,619	0.9	3.8	
Trapaing Kreal	35,286	36,127	264	228	36,619	0.9	3.8	

International Outbound Tourist Departures by Months in 2009 - 2014

Months	International Outbound Tourist Departures						Change (%)		
	2009	2010	2011	2012	2013	2014	2012/11	2013/12	2014*/13
January	199,905	215,702	279,303	356,884	413,103	447,276	27.8	15.8	8.3
February	183,808	212,222	253,363	311,097	386,508	416,706	22.8	24.2	7.8
March	188,323	213,645	250,261	318,776	382,680	406,828	27.4	20.0	6.3
April	150,744	183,147	215,957	275,739	323,714	319,318	27.7	17.4	-1.4
May	146,758	174,019	191,274	245,791	301,372	320,101	28.5	22.6	6.2
June	125,746	155,291	188,863	246,741	295,284	287,128	30.6	19.7	-2.8
July	150,580	185,426	230,580	246,741	333,425	325,697	7.0	35.1	-2.3
August	169,034	206,427	257,499	297,916	346,436	340,519	15.7	16.3	-1.7
September	130,337	159,720	215,988	237,456	285,082	279,932	9.9	20.1	-1.8
October	143,354	188,208	220,797	278,170	318,058	307,931	26.0	14.3	-3.2
November	173,102	230,741	254,434	315,143	370,712	356,684	23.9	17.6	-3.8
December	190,136	230,275	288,990	374,130	417,223	403,304	29.5	11.5	-3.3
Total	1,951,827	2,354,823	2,847,309	3,504,584	4,173,597	4,211,424	23.1	19.1	0.9

Major Tourism Data in 1993 - 2014

Years	Visitor Arrivals		Average Length of Stay	Hotel Occupancy Rate	Tourism Receipts
	number	change (%)	(Days)	(%)	Million (US\$)
1993	118,183	-	N/A	N/A	N/A
1994	176,617	49.4	N/A	N/A	N/A
1995	219,680	24.4	8.00	37.00	100
1996	260,489	18.6	7.50	40.00	118
1997	218,843	-16.0	6.40	30.00	103
1998	289,524	32.3	5.20	40.00	166
1999	367,743	27.0	5.50	44.00	190
2000	466,365	26.8	5.50	45.00	228
2001	604,919	29.7	5.50	48.00	304
2002	786,524	30.0	5.80	50.00	379
2003	701,014	-10.9	5.50	50.00	347
2004	1,055,202	50.5	6.30	52.00	578
2005	1,421,615	34.7	6.30	52.00	832
2006	1,700,041	19.6	6.50	54.79	1,049
2007	2,015,128	18.5	6.50	54.79	1,403
2008	2,125,465	5.5	6.65	62.68	1,595
2009	2,161,577	1.7	6.45	63.57	1,561
2010	2,508,289	16.0	6.45	65.74	1,786
2011	2,881,862	14.9	6.50	66.15	1,912
2012	3,584,307	24.4	6.30	68.49	2,210
2013	4,210,165	17.5	6.75	69.53	2,547
2014	4,502,775	7.0	6.5	67.55	2,736

Average length of stay

Kind of tourist	Phnom Penh	Siem Reap	Expenditure
	(Days)	(Days)	(US\$ / Day)
GIT	4.15	4.10	
FIT	5.75	5.45	
Average	4.95	4.78	93.48

GIT: Group Inclusive Travelers

FIT: Free Independent Travelers

Average expenditure of FIT

Items	Expenditure (US\$)
Accommodation	127.50
Food & beverage	119.43
Shopping	90.00
Local transport	65.00
Others	80.00
Total	481.93

Average expenditure of GIT

Items	Expenditure (US\$)
Package Tours (Accommodation, F&B, Local transport, Ticket entrance)	345.00
Shopping	120.00
Others	100.00
Total	565.00

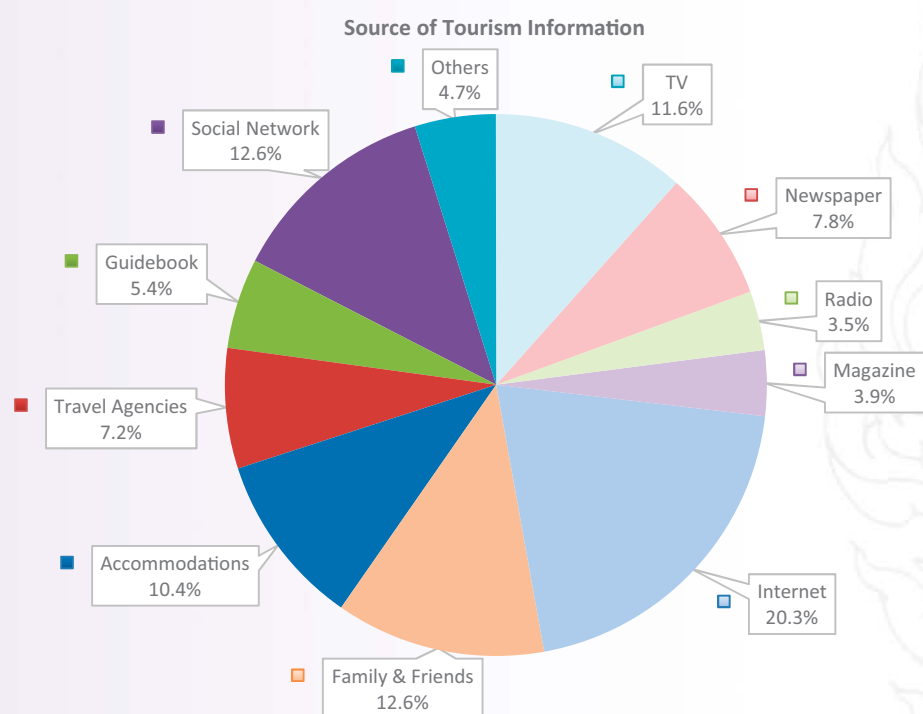
Profile of international Tourist Arrivals to Cambodia in 2010 - 2014 (Inbound Tourism Survey 2014)

Tourist Characteristic	2010		2011		2012		2013		2014	
	PNH (%)	REP (%)	PNH (%)	REP (%)	PNH (%)	REP (%)	PNH (%)	REP (%)	PNH (%)	REP (%)
Frequency of Visit	100.00	100.00	100.00	100.00	100.00	100.00	100.00	100.00	100.00	100.00
First Visit	80.54	93.11	82.47	78.65	84.57	81.63	84.16	83.49	82.5	82.8
Revisit	19.46	6.89	17.53	21.35	15.43	18.37	15.84	16.51	17.5	17.2
Travel Arrangement	100.00	100.00	100.00	100.00	100.00	100.00	100.00	100.00	100.00	100.00
GIT	31.14	47.78	35.19	62.32	45.29	63.51	49.62	67.38	50.3	66.8
FIT	68.86	52.22	64.81	37.68	54.71	36.49	50.38	32.62	49.7	33.2
Sex	100.00	100.00	100.00	100.00	100.00	100.00	100.00	100.00	100.00	100.00
Male	62.28	57.11	65.12	45.22	62.53	47.38	64.07	48.04	63.2	49.5
Female	37.72	42.89	34.88	54.78	37.47	52.62	35.93	51.96	36.8	50.5
Purpose of Visit	100.00	100.00	100.00	100.00	100.00	100.00	100.00	100.00	100.00	100.00
Holiday, Leisure	65.27	86.00	73.14	88.11	71.16	87.43	82.56	98.47	80.2	96.5
Business	8.08	4.00	9.27	4.56	10.31	4.32	14.68	0.63	15.7	2.3
Official	3.59	2.22	4.32	2.34	4.52	2.28	2.16	0.27	3.2	0.6
Friend/Parents (VFR)	15.87	5.56	9.72	3.64	10.70	5.09	0.24	0.05	0.4	0.2
Others	7.19	2.22	3.55	1.35	3.31	0.88	0.36	0.58	0.5	0.4
Age	100.00	100.00	100.00	100.00	100.00	100.00	100.00	100.00	100.00	100.00
Under - 19	11.08	12.56	13.97	12.29	12.74	11.94	10.21	12.19	9.6	11.5
20 - 29	21.45	23.81	28.42	27.35	22.56	24.14	24.13	25.34	23.2	26.4
30 - 39	11.08	13.45	23.73	27.97	13.08	27.84	14.12	26.13	16.3	25.2
40 - 49	28.50	29.73	21.61	26.52	31.57	28.36	33.46	34.16	34.5	30.2
50 - 59	19.34	17.46	9.11	3.34	17.26	4.87	17.27	1.47	15.4	5.6
60 - Over	8.55	2.99	3.16	2.53	2.79	2.85	0.81	0.71	1.0	1.1
Occupation	100.00	100.00	100.00	100.00	100.00	100.00	100.00	100.00	100.00	100.00
Employee	30.53	28.44	30.21	29.16	31.25	30.19	30.37	31.05	30.2	29.6
Business	12.57	12.44	23.36	13.98	19.42	14.25	19.52	16.51	20.1	17.2
Teacher	6.89	9.11	17.14	9.29	9.08	8.19	18.63	8.21	16.7	9.1
Retired	7.49	10.67	7.91	12.63	6.97	11.67	11.09	12.64	6.3	13.4
Official	2.10	2.44	6.52	5.34	5.16	4.38	7.94	4.97	8.5	5.4
Student	22.75	18.44	11.67	18.16	18.10	19.16	12.45	19.05	14.2	18.3
Others	17.67	18.46	3.19	11.44	10.02	12.16	8.52	7.57	4.0	7.0

Note:

PNH: Phnom Penh Area

REP: Siem Reap Area



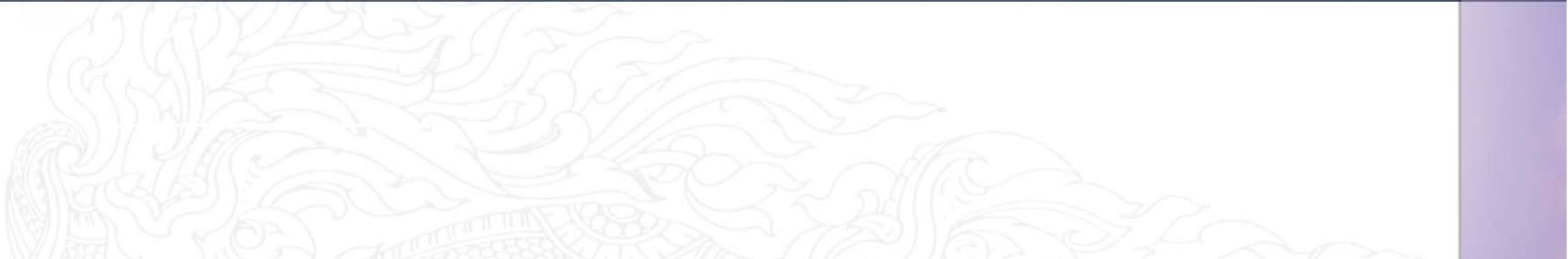
SECTION I



PHNOM PENH INTERNATIONAL AIRPORT

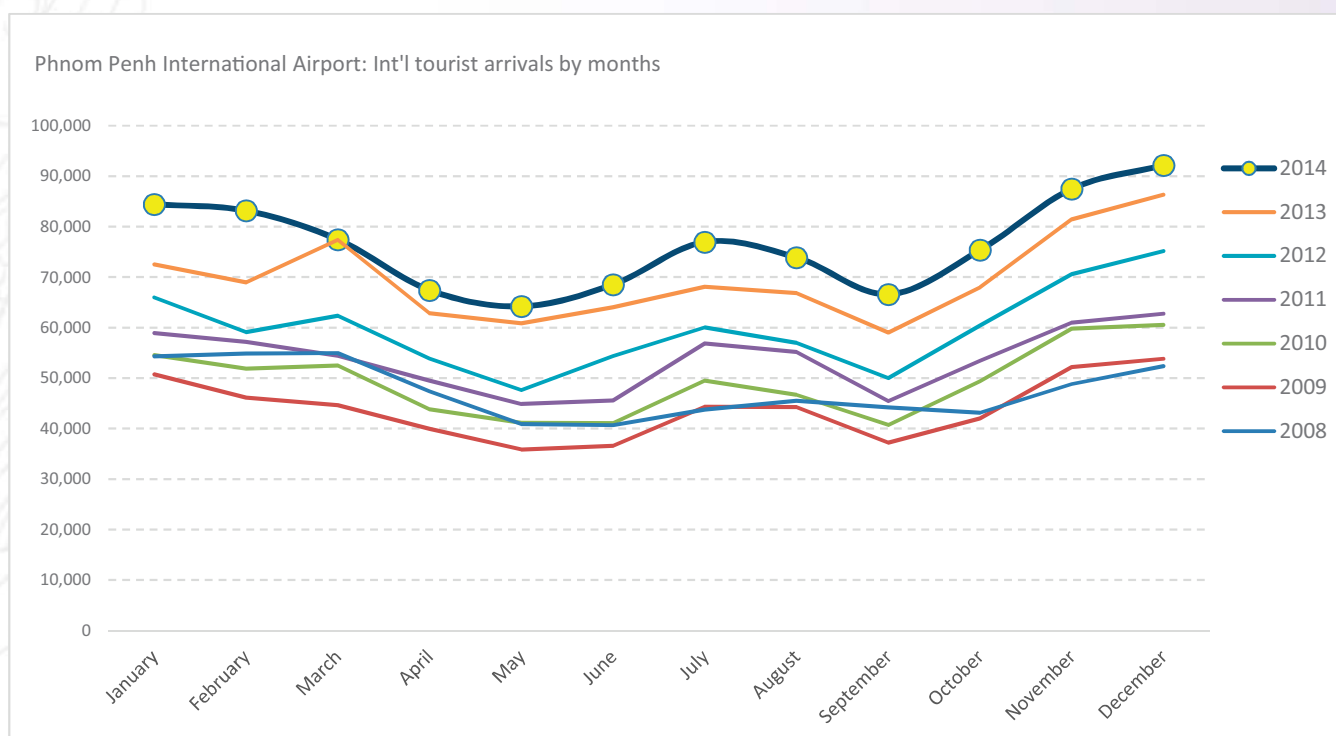


Phnom Penh Capital



Int'l Tourist Arrivals to Phnom Penh International Airport by Months in 2008 - 2014

Months	2008	2009	2010	2011	2012	2013	2014	Change (%)			
								2011/10	2012/11	2013/12	2014*/13
Q1	164,166	141,496	158,979	170,558	187,408	218,912	245,071	7.3	9.9	16.8	11.9
January	54,336	50,749	54,584	58,905	65,956	72,549	84,436	7.9	12.0	10.0	16.4
February	54,854	46,128	51,867	57,202	59,122	68,988	83,167	10.3	3.4	16.7	20.6
March	54,976	44,619	52,528	54,451	62,330	77,375	77,468	3.7	14.5	24.1	0.1
Q2	128,926	112,410	126,012	139,906	155,878	187,758	200,182	11.0	11.4	20.5	6.6
April	47,358	39,983	43,797	49,478	53,883	62,859	67,435	13.0	8.9	16.7	7.3
May	40,907	35,850	41,131	44,874	47,636	60,880	64,217	9.1	6.2	27.8	5.5
June	40,661	36,577	41,084	45,554	54,359	64,019	68,530	10.9	19.3	17.8	7.0
Q3	133,508	125,812	136,939	157,531	167,096	193,961	217,489	15.0	6.1	16.1	12.1
July	43,793	44,356	49,519	56,875	60,057	68,078	76,980	14.9	5.6	13.4	13.1
August	45,492	44,264	46,697	55,182	57,016	66,865	73,895	18.2	3.3	17.3	10.5
September	44,223	37,192	40,723	45,474	50,023	59,018	66,614	11.7	10.0	18.0	12.9
Q4	144,303	148,027	169,698	177,240	206,202	235,746	255,058	4.4	16.3	14.3	8.2
October	43,122	42,024	49,353	53,459	60,437	67,988	75,375	8.3	13.1	12.5	10.9
November	48,824	52,181	59,803	61,005	70,588	81,430	87,488	2.0	15.7	15.4	7.4
December	52,357	53,822	60,542	62,776	75,177	86,328	92,195	3.7	19.8	14.8	6.8
Total	570,903	527,745	591,628	645,235	716,584	836,377	917,800	9.1	11.1	16.7	9.7



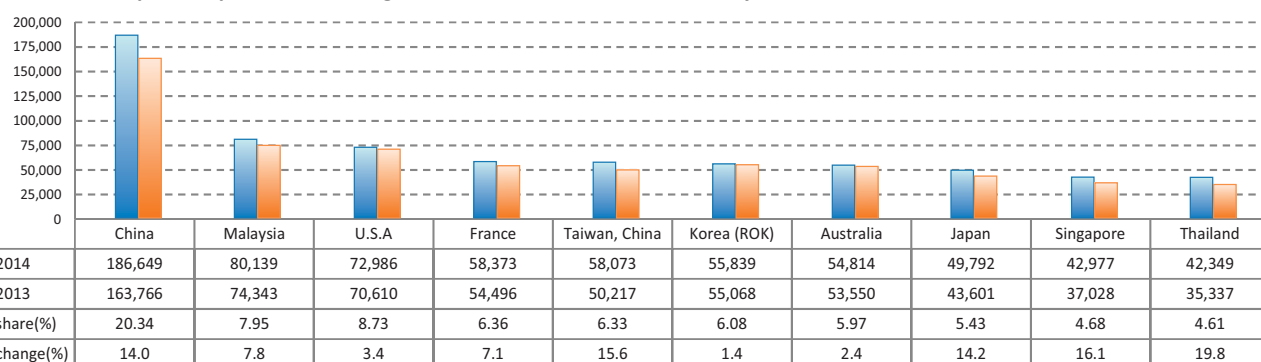
International Tourist Arrivals to Phnom Penh International Airport by Country of Residence in 2014 (by Air only)

Regions Country of Residence	2014												Total	Share (%) 2014*
	Jan	Feb	Mar	Apr	May	Jun	Jul	Aug	Sep	Oct	Nov	Dec		
GRAND TOTAL	84,436	83,167	77,468	67,435	64,217	68,530	76,980	73,895	66,614	75,375	87,488	92,195	917,800	100.0
Asia and the Pacific	53,648	56,502	52,591	47,515	47,691	51,129	54,058	54,436	51,713	54,275	58,866	62,817	645,241	70.3
ASEAN	13,979	16,049	17,084	15,909	18,186	19,576	17,267	16,633	16,830	19,540	19,654	19,756	210,463	22.9
Brunei Darussalam	30	26	40	35	31	61	26	54	42	38	34	28	445	0.0
Indonesia	846	914	654	703	1,141	784	955	902	658	795	763	817	9,932	1.1
Lao PDR	157	157	241	192	308	232	181	161	225	231	266	208	2,559	0.3
Malaysia	5,236	6,624	6,654	6,591	6,880	6,930	6,253	5,905	6,480	7,991	7,033	7,562	80,139	8.7
Myanmar	174	144	291	226	378	283	211	195	176	193	325	267	2,863	0.3
Philippines	697	632	641	807	596	741	676	711	782	773	771	580	8,407	0.9
Singapore	2,653	2,582	3,366	2,685	3,642	4,800	3,490	3,351	3,452	4,007	4,483	4,466	42,977	4.7
Thailand	2,826	3,140	3,548	3,035	3,569	3,504	3,457	3,763	3,477	3,829	4,271	3,930	42,349	4.6
Vietnam	1,360	1,830	1,649	1,635	1,641	2,241	2,018	1,591	1,538	1,683	1,708	1,898	20,792	2.3
Eastern Asia	30,424	34,369	28,940	24,842	24,086	25,208	30,111	31,956	28,297	28,182	31,227	33,092	350,734	38.2
China (RPC)	16,463	19,546	16,145	12,707	12,249	12,532	15,246	15,521	15,338	15,358	17,091	18,453	186,649	20.3
Hong Kong SAR	22	58	9	12	8	11	6	8	5	10	14	18	181	0.0
Japan	3,598	4,855	4,192	3,445	3,554	4,086	4,302	4,997	4,510	3,688	4,348	4,217	49,792	5.4
Korea (ROK)	5,822	4,663	3,871	3,807	3,785	4,024	5,938	5,990	3,859	4,080	4,950	5,050	55,839	6.1
Mongolia	21	14	21	11	11	24	31	29	14	8	5	11	200	0.0
Taiwan, China	4,498	5,233	4,702	4,860	4,479	4,531	4,588	5,411	4,571	5,038	4,819	5,343	58,073	6.3
Southern Asia	1,354	1,174	1,474	1,342	1,356	1,304	1,330	1,652	1,586	1,634	1,631	1,465	17,302	1.9
Afghanistan	9	26	40	15	5	16	2	8	5	3	2	4	135	0.0
Bangladesh	83	79	70	111	111	145	163	230	179	227	197	81	1,676	0.2
Bhutan	7	3	1	3	11	8	2	2	7	3	2	6	55	0.0
India	995	818	1,139	944	919	902	946	1,087	1,125	1,124	1,126	1,044	12,169	1.3
Nepal	60	68	53	62	77	74	66	81	72	75	72	93	853	0.1
Pakistan	85	81	72	103	95	54	73	84	83	87	118	136	1,071	0.1
Sri Lanka	115	99	99	104	138	105	78	160	115	115	114	101	1,343	0.1
Western Asia	77	62	60	46	66	58	83	72	35	34	41	94	728	0.1
Kazakhstan	59	47	45	36	59	48	56	55	25	29	27	60	546	0.1
Uzbekistan	18	15	15	10	7	10	27	17	10	5	14	34	182	0.0
Oceania	7,679	4,740	4,906	5,281	3,910	4,859	5,173	3,988	4,853	4,776	6,126	8,290	64,581	7.0
Australia	6,737	4,158	4,176	4,447	3,239	4,157	4,210	3,377	4,216	4,018	5,274	6,805	54,814	6.0
Fiji	8	11	10	8	10	3	1	5	12	4	5	8	85	0.0
New Zealand	934	571	720	826	661	699	962	606	625	754	847	1,477	9,682	1.1
Other Asia & the Pacific	135	108	127	95	87	124	94	135	112	109	187	120	1,433	0.2
Europe	20,568	18,505	15,833	12,165	9,645	9,769	14,641	13,359	8,665	12,815	18,378	19,145	173,488	18.9
Northern Europe	6,283	5,342	4,979	3,973	3,112	3,183	3,818	3,118	2,567	4,083	5,324	5,609	51,391	5.6
Denmark	363	358	262	150	169	165	273	163	113	186	192	256	2,650	0.3
Finland	448	303	258	132	110	94	108	97	107	277	275	397	2,606	0.3
Iceland	2	5	68	14	16	24	8	10	55	79	61	48	390	0.0
Ireland	295	181	147	139	180	184	208	148	47	89	144	180	1,942	0.2
Norway	250	274	254	227	108	156	152	92	147	249	324	341	2,574	0.3
Sweden	720	628	489	301	222	181	256	179	209	318	540	729	4,772	0.5
United Kingdom	4,205	3,593	3,501	3,010	2,307	2,379	2,813	2,429	1,889	2,885	3,788	3,658	36,457	4.0
Western Europe	10,541	9,960	8,463	6,458	5,102	5,154	8,820	7,510	4,411	6,676	9,972	10,065	93,132	10.1
Austria	239	237	110	96	29	50	92	67	25	36	79	193	1,253	0.1
Belgium	527	483	343	398	225	253	505	348	223	315	668	486	4,774	0.5
France	6,306	6,138	5,266	3,982	3,416	3,533	5,942	5,211	2,595	4,154	5,952	5,878	58,373	6.4
Germany	1,974	1,866	1,668	1,147	814	810	1,239	1,309	1,038	1,329	2,245	2,067	17,506	1.9
Luxembourg	11	12	9	15	9	7	13	15	4	11	5	29	140	0.0
Monaco	2	0	1	0	0	0	0	0	6	10	0	4	23	0.0
Netherlands	688	601	618	446	344	268	621	346	285	398	479	567	5,661	0.6
Switzerland	794	623	448	374	265	233	408	214	235	423	544	841	5,402	0.6
Eastern Europe	2,104	1,883	1,313	758	652	624	884	796	688	917	1,460	1,801	13,880	1.5
Bulgaria	66	23	22	15	8	11	8	20	5	8	15	22	223	0.0
Czech Republic	97	152	66	43	23	63	137	39	30	27	63	98	838	0.1
Estonia	77	99	37	9	16	33	77	175	15	34	38	51	661	0.1
Hungary	93	54	39	18	15	43	39	31	44	62	56	55	549	0.1
Lithuania	19	10	21	8	18	4	3	5	13	15	23	30	169	0.0
Poland	194	244	161	58	49	69	51	56	97	113	290	149	1,531	0.2
Romania	55	61	75	57	37	42	33	33	33	30	94	64	614	0.1
Russian Federation	1,330	1,066	808	453	406	288	451	357	371	525	733	1,175	7,963	0.9
Slovakia	70	92	49	67	40	23	35	24	30	44	65	73	612	0.1
Ukraine	103	82	35	30	40	48	50	56	50	59	83	84	720	0.1

International Tourist Arrivals to Phnom Penh International Airport by Country of Residence in 2014 (by Air only)

Regions Country of Residence	2014												Total	Share (%) 2014*
	Jan	Feb	Mar	Apr	May	Jun	Jul	Aug	Sep	Oct	Nov	Dec		
GRAND TOTAL	84,436	83,167	77,468	67,435	64,217	68,530	76,980	73,895	66,614	75,375	87,488	92,195	917,800	100.0
Southern Europe	1,535	1,224	992	895	715	746	1,013	1,844	925	1,074	1,429	1,598	13,990	1.5
Croatia	25	15	23	6	5	4	4	12	6	6	5	25	136	0.0
Greece	47	38	16	22	13	22	23	43	15	28	44	86	397	0.0
Italy	882	686	571	416	322	308	400	967	330	472	685	944	6,983	0.8
Portugal	56	36	38	44	38	35	38	62	52	46	77	49	571	0.1
Serbia	32	14	13	18	10	10	5	12	15	16	15	12	172	0.0
Slovenia	10	3	1	6	2	3	11	1	11	20	13	17	98	0.0
Spain	349	316	220	277	255	291	466	602	379	342	463	343	4,303	0.5
Turkey	134	116	110	106	70	73	66	145	117	144	127	122	1,330	0.1
Other Europe	105	96	86	81	64	62	106	91	74	65	193	72	1,095	0.1
Americas	9,823	7,770	8,657	7,360	6,524	7,322	7,937	5,804	5,824	7,858	9,739	9,663	94,281	10.3
Argentina	61	37	63	29	19	16	8	29	18	25	20	29	354	0.0
Brazil	185	77	191	73	57	58	111	74	76	54	134	125	1,215	0.1
Canada	1,988	1,839	1,547	1,193	1,184	1,123	1,267	819	925	1,405	1,741	1,853	16,884	1.8
Chile	25	105	55	116	68	26	51	176	23	46	105	86	882	0.1
Colombia	67	13	37	26	19	49	32	21	26	32	48	63	433	0.0
Costa Rica	4	4	6	6	5	33	4	3	3	5	6	3	82	0.0
Ecuador	6	4	6	8	4	9	7	10	6	9	5	13	87	0.0
Mexico	54	31	54	48	37	65	53	41	36	38	33	68	558	0.1
Peru	15	9	18	9	13	6	13	16	12	6	13	10	140	0.0
United States	7,393	5,587	6,615	5,797	5,063	5,875	6,348	4,563	4,653	6,198	7,516	7,378	72,986	8.0
Uruguay	9	1	3	3	12	5	2	2	2	1	3	1	42	0.0
Other Americas	16	63	62	52	43	57	41	50	46	39	115	34	618	0.1
Africa	203	129	177	192	138	144	154	134	143	163	259	255	2,091	0.2
Cameroon	8	2	2	5	2	3	3	5	2	2	2	2	38	0.0
Congo	1		1	7	3	1	3	4	3	1	3	6	33	0.0
Ghana	5	2	1	4	3	2	1	5	1	2	5	1	32	0.0
Kenya	15	12	16	9	11	13	16	16	21	8	9	12	158	0.0
Liberia	5	1	1	2		1			7	1	7		25	0.0
Nigeria	25	26	39	49	35	43	36	37	38	43	49	28	448	0.0
Sudan	14		5	6		2	1	10	3	1	2	7	51	0.0
South Africa	121	70	87	83	66	64	82	43	50	87	144	186	1,083	0.1
Uganda	1	4	6	6	3	4	3	3	6	2	14		52	0.0
Other Africa	8	12	19	21	15	11	9	11	12	16	24	13	171	0.0
Middle East	194	261	210	203	219	166	190	162	269	264	246	315	2,699	0.3
Egypt	15	13	14	10	17	15	19	24	16	19	15	14	191	0.0
Iran	21	22	27	10	9	22	22	23	23	62	72	104	417	0.0
Iraq	3	4	5	4	5	2	2	6	6	7	5	4	53	0.0
Israel	105	188	110	140	132	76	111	77	168	132	114	128	1,481	0.2
Kuwait	15	9	7	7	4	6	15	8	6	15	9	8	109	0.0
Oman	3	4	4	6	2	3	3	4	4	3	1	13	46	0.0
Palestine		9	9	8	2	5	5	4	1	2	3	9	57	0.0
Qatar	1		1	1	5		1	1	28	2	4	4	48	0.0
Saudi Arabia	12	2	12	6	14	22	2	6	5	10	3	7	101	0.0
United Arab Emirates	1	1	1		5	1		1		1		3	14	0.0
Yemen	11	4	10	4	11	8	2		4	1	8	13	76	0.0
Other Middle East	7	5	10	13	9	7	8	9	8	10	12	8	106	0.0

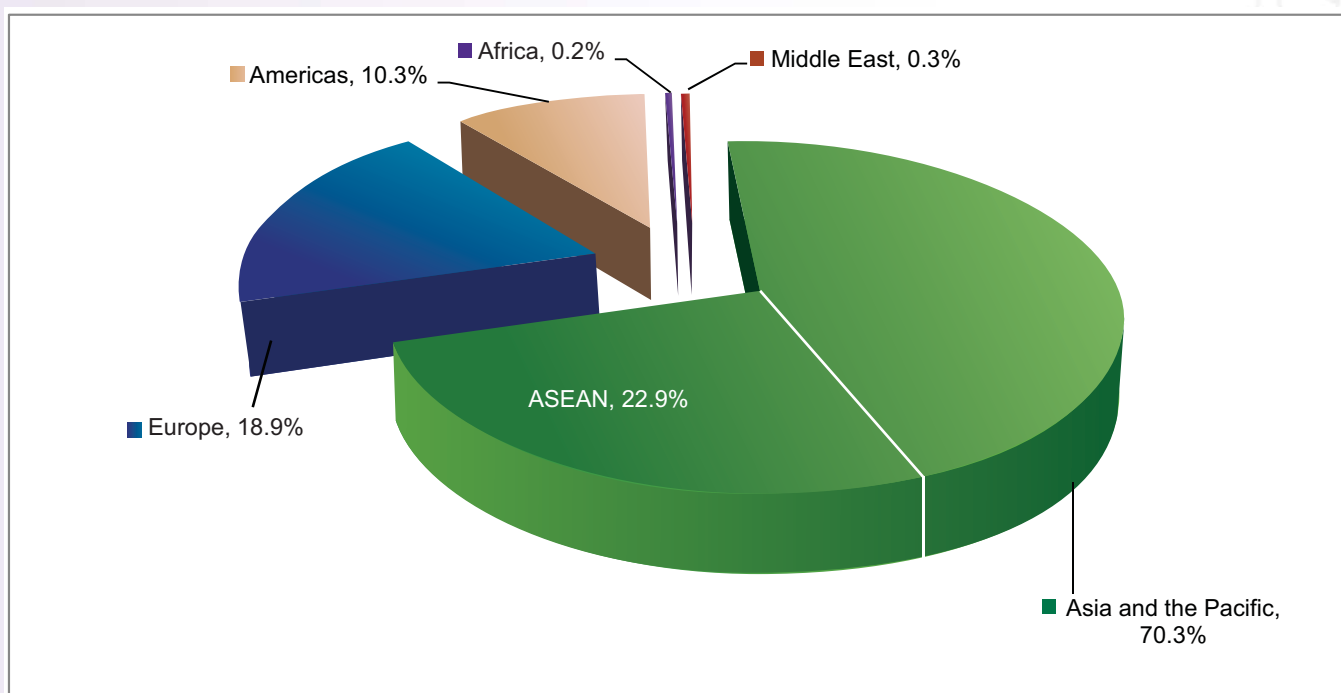
PNH Int'l Airport: Top Ten Generating markets in 2014, tourist arrivals by ranks



Int'l Tourist Arrivals to Phnom Penh International Airport by Regions in 2014

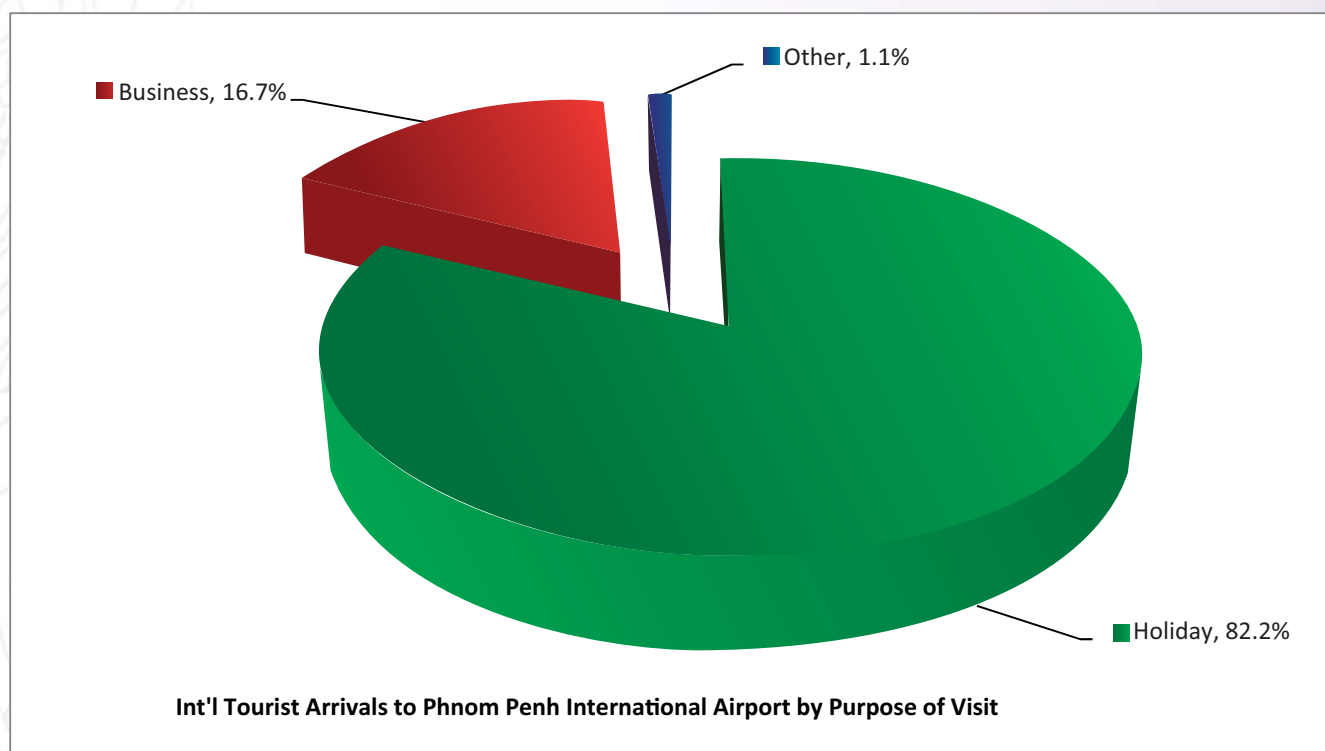
Months	Asia and the Pacific		Europe	Americas	Africa	Middle East	Total
		ASEAN					
Q1	162,741	47,112	54,906	26,250	509	665	245,071
January	53,648	13,979	20,568	9,823	203	194	84,436
February	56,502	16,049	18,505	7,770	129	261	83,167
March	52,591	17,084	15,833	8,657	177	210	77,468
Q2	146,335	53,671	31,579	21,206	474	588	200,182
April	47,515	15,909	12,165	7,360	192	203	67,435
May	47,691	18,186	9,645	6,524	138	219	64,217
June	51,129	19,576	9,769	7,322	144	166	68,530
Q3	160,207	50,730	36,665	19,565	431	621	217,489
July	54,058	17,267	14,641	7,937	154	190	76,980
August	54,436	16,633	13,359	5,804	134	162	73,895
September	51,713	16,830	8,665	5,824	143	269	66,614
Q4	175,958	58,950	50,338	27,260	677	825	255,058
October	54,275	19,540	12,815	7,858	163	264	75,375
November	58,866	19,654	18,378	9,739	259	246	87,488
December	62,817	19,756	19,145	9,663	255	315	92,195
Total	645,241	210,463	173,488	94,281	2,091	2,699	917,800
share (%)	70.3%	22.9%	18.9%	10.3%	0.2%	0.3%	100.0%

Note: ASEAN 10 countries was include in the Asia and the Pacific.



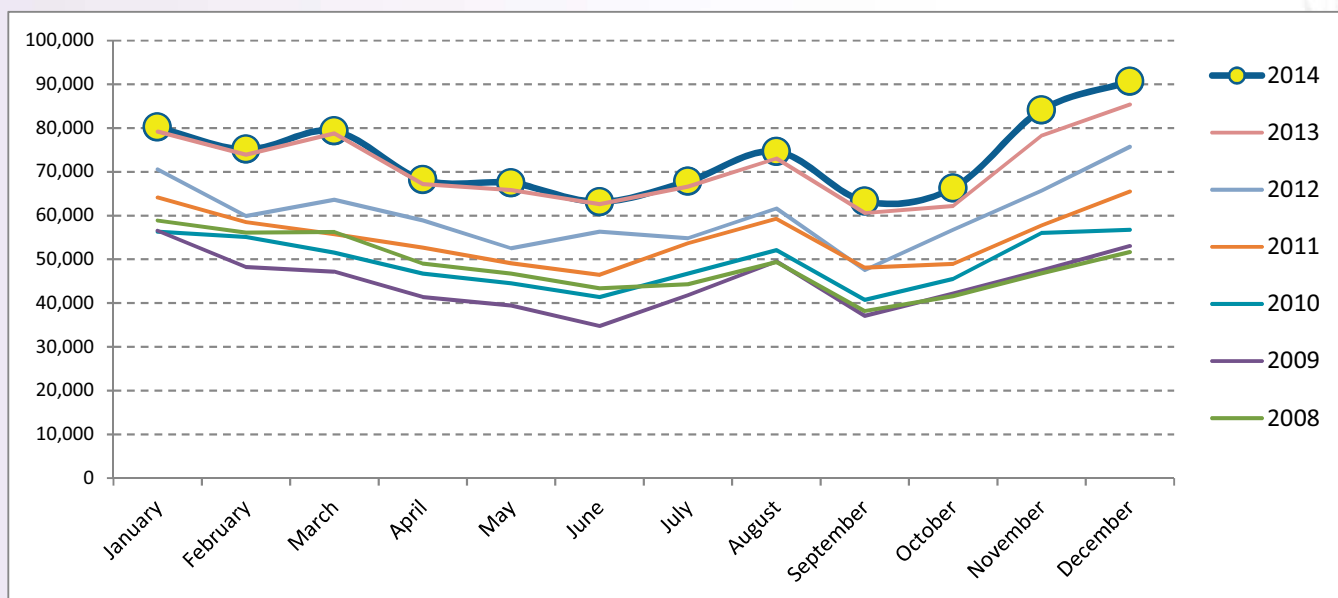
International Tourist Arrivals to Phnom Penh International Airport by Purpose of Visit in 2008 - 2014

Purpose of Visit	Int'l tourist arrivals							Change (%)		
	2008	2009	2010	2011	2012	2013	2014	12/11	13/12	2014*13
Total	570,903	527,745	591,628	645,233	716,584	836,377	917,800	11.1	16.7	9.7
Holiday	459,340	422,896	477,466	533,776	532,426	693,535	754,026	-0.3	30.3	8.7
Business	90,282	81,881	90,302	91,223	107,422	122,773	153,332	17.8	14.3	24.9
Other	21,281	22,968	23,860	20,234	76,736	20,069	10,442	279.2	-73.8	-48.0
Q1	164,166	141,496	158,979	170,558	187,408	218,912	245,071	9.9	16.8	11.9
Holiday	133,802	115,850	129,485	142,249	147,940	182,957	200,440	4.0	23.7	9.6
Business	24,736	20,343	23,563	23,277	25,432	31,082	41,132	9.3	22.2	32.3
Other	5,628	5,303	5,931	5,032	14,036	4,873	3,499	178.9	-65.3	-28.2
Q2	128,926	112,410	126,012	139,906	155,878	187,758	200,182	11.4	20.5	6.6
Holiday	99,893	86,273	97,701	112,361	111,187	151,740	161,187	-1.0	36.5	6.2
Business	23,840	20,356	22,184	22,680	25,356	31,060	36,056	11.8	22.5	16.1
Other	5,193	5,781	6,127	4,865	19,335	4,958	2,939	297.4	-74.4	-40.7
Q3	133,508	125,812	136,939	157,529	167,096	193,961	217,489	6.1	16.1	12.1
Holiday	107,264	98,668	109,381	128,916	120,170	158,673	179,270	-6.8	32.0	13.0
Business	20,909	21,084	21,635	23,380	27,198	29,990	35,908	16.3	10.3	19.7
Other	5,335	6,060	5,923	5,233	19,728	5,298	2,311	277.0	-73.1	-56.4
Q4	144,303	148,027	169,698	177,240	206,202	235,746	255,058	16.3	14.3	8.2
Holiday	118,381	122,105	140,899	150,250	153,129	200,165	213,129	1.9	30.7	6.5
Business	20,797	20,098	22,920	21,886	29,436	30,641	40,236	34.5	4.1	31.3
Other	5,125	5,824	5,879	5,104	23,637	4,940	1,693	363.1	-79.1	-65.7



Int'l Tourist Departures from Phnom Penh International Airport by Months in 2008 - 2014

Months	Int'l Tourists Departure							Change (%)		
	2008	2009	2010	2011	2012	2013	2014	12/11	13/12	2014*/13
Q1	171,257	151,938	162,931	178,353	193,993	231,907	234,594	8.8	19.5	1.2
January	58,882	56,536	56,288	64,141	70,533	79,240	80,190	10.0	12.3	1.2
February	56,140	48,257	55,117	58,444	59,870	73,885	75,128	2.4	23.4	1.7
March	56,235	47,145	51,526	55,768	63,590	78,782	79,276	14.0	23.9	0.6
Q2	139,102	115,543	132,678	148,240	167,732	195,706	198,771	13.1	16.7	1.6
April	49,002	41,362	46,771	52,650	58,895	67,214	68,184	11.9	14.1	1.4
May	46,736	39,416	44,500	49,130	52,543	65,861	67,435	6.9	25.3	2.4
June	43,364	34,765	41,407	46,460	56,294	62,631	63,152	21.2	11.3	0.8
Q3	131,832	128,455	139,581	161,037	163,927	200,275	205,800	1.8	22.2	2.8
July	44,297	41,831	46,736	53,686	54,794	66,601	67,864	2.1	21.5	1.9
August	49,354	49,540	52,122	59,221	61,592	73,082	74,643	4.0	18.7	2.1
September	38,181	37,084	40,723	48,130	47,541	60,592	63,293	-1.2	27.5	4.5
Q4	140,045	142,702	158,314	172,192	198,206	225,834	241,036	15.1	13.9	6.7
October	41,588	42,152	45,539	48,973	56,773	62,155	66,291	15.9	9.5	6.7
November	46,814	47,484	56,030	57,721	65,685	78,275	84,093	13.8	19.2	7.4
December	51,643	53,066	56,745	65,498	75,748	85,404	90,652	15.6	12.7	6.1
Total	582,236	538,638	593,504	659,822	723,858	853,722	880,201	9.7	17.9	3.1



SECTION II



SIEM REAP INTERNATIONAL AIRPORT

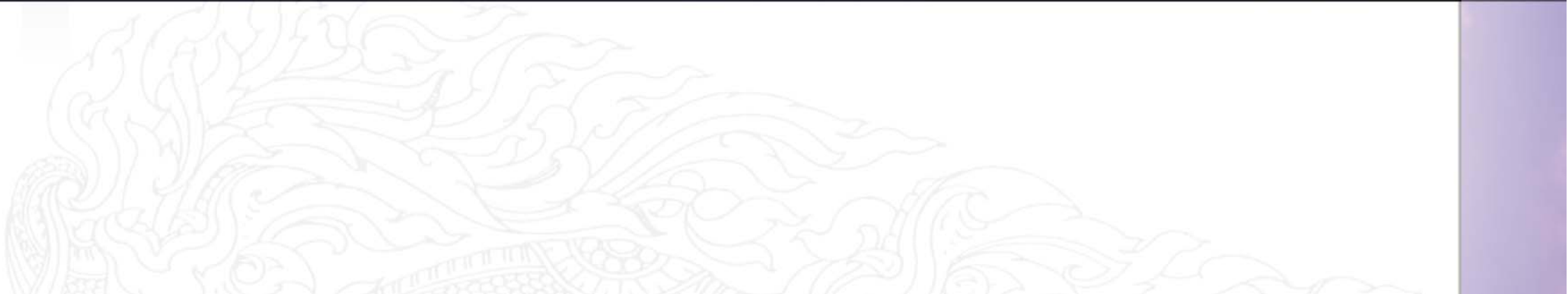


Angkor Wat Temple - ប្រាសាទអង្គរវត្ត
Heritage of Humanity and World Wonder
Cambodia's World Heritage Declared by UNESCO 1992

From the vivid memories of Angkor Sankranta 2014 and welcome for the year 2015

www.facebook.com/vorleakchak

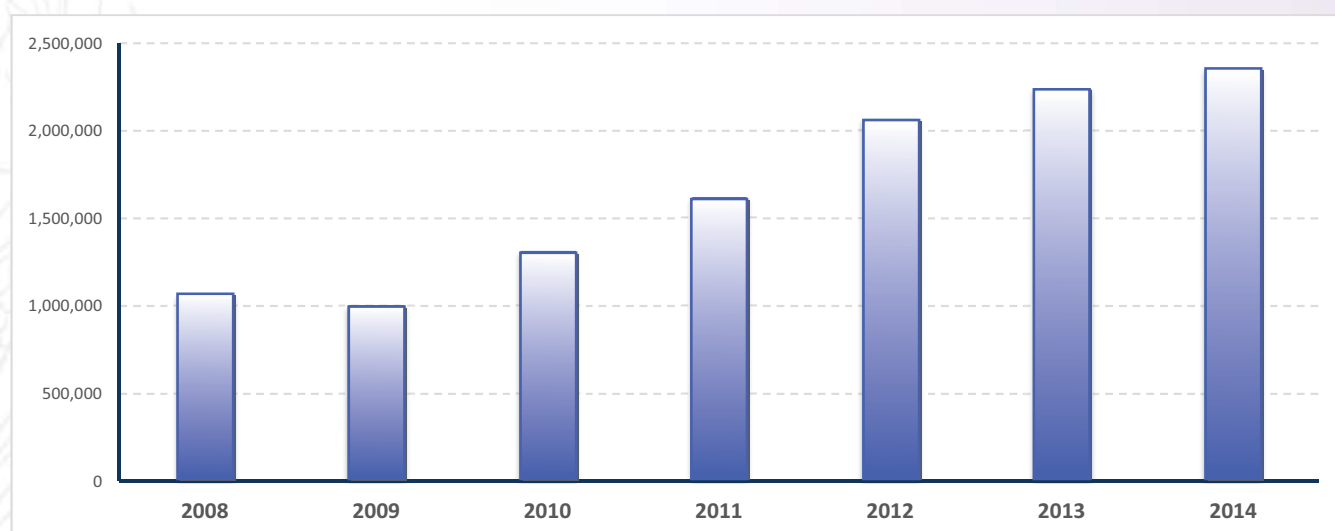
www.vorleakchak.com



International Tourist Arrivals to Siem Reap Angkor by Months in 2008 - 2014

(by all mean of transportations)

Months	2008	2009	2010	2011	2012	2013	2014	Change (%)			
								2011/10	2012/11	2013/12	2014*/13
Q1	356,390	298,164	366,102	435,972	639,874	694,729	778,737	19.1	46.8	8.6	12.1
January	121,975	105,701	122,163	166,354	224,145	248,614	286,331	36.2	34.7	10.9	15.2
February	120,657	94,241	126,057	146,593	217,132	231,369	262,226	16.3	48.1	6.6	13.3
March	113,758	98,222	117,882	123,025	198,597	214,746	230,180	4.4	61.4	8.1	7.2
Q2	222,404	204,864	274,842	348,537	418,783	427,546	460,807	26.8	20.2	2.1	7.8
April	91,105	86,465	109,799	129,953	179,778	166,451	191,102	18.4	38.3	-7.4	14.8
May	72,447	62,175	89,902	115,153	121,799	135,066	143,673	28.1	5.8	10.9	6.4
June	58,852	56,224	75,141	103,431	117,206	126,029	126,032	37.6	13.3	7.5	0.0
Q3	209,005	218,202	287,229	382,595	428,556	451,678	501,637	33.2	12.0	5.4	11.1
July	65,896	71,282	95,427	122,954	143,464	159,244	165,895	28.8	16.7	11.0	4.2
August	78,254	80,220	106,502	140,769	163,502	151,449	183,140	32.2	16.1	-7.4	20.9
September	64,855	66,700	85,300	118,872	121,590	140,985	152,602	39.4	2.3	16.0	8.2
Q4	272,071	276,854	377,083	442,972	576,123	663,363	609,756	17.5	30.1	15.1	-8.1
October	79,200	77,553	108,241	122,450	159,067	196,263	147,737	13.1	29.9	23.4	-24.7
November	95,984	90,472	136,468	148,656	190,614	214,731	212,203	8.9	28.2	12.7	-1.2
December	96,887	108,829	132,374	171,866	226,442	252,369	249,816	29.8	31.8	11.4	-1.0
Total	1,059,870	998,084	1,305,256	1,610,076	2,063,336	2,237,316	2,350,937	23.4	28.2	8.4	5.1



International Tourist Arrivals to Siem Reap International Airport by Months in 2008 - 2014

(by Air only)

Months	2008	2009	2010	2011	2012	2013	2014	Change (%)			
								2011/10	2012/11	2013/12	2014*/13
Q1	237,857	193,717	212,527	256,871	326,348	392,248	453,898	20.9	27.0	20.2	15.7
January	81,875	70,489	72,411	93,276	119,543	142,661	169,494	28.8	28.2	19.3	18.8
February	80,882	62,994	70,028	87,806	109,026	134,465	157,439	25.4	24.2	23.3	17.1
March	75,100	60,234	70,088	75,789	97,779	115,122	126,965	8.1	29.0	17.7	10.3
Q2	133,099	108,811	134,855	147,038	181,245	210,297	238,033	9.0	23.3	16.0	13.2
April	53,947	46,802	53,678	57,187	72,399	82,489	93,885	6.5	26.6	13.9	13.8
May	45,157	34,735	42,411	45,395	56,762	65,375	73,215	7.0	25.0	15.2	12.0
June	33,995	27,274	38,766	44,456	52,084	62,433	70,933	14.7	17.2	19.9	13.6
Q3	125,682	121,361	151,315	177,756	203,445	234,051	279,983	17.5	14.5	15.0	19.6
July	39,449	38,761	48,038	59,467	66,348	76,571	92,371	23.8	11.6	15.4	20.6
August	47,692	47,121	58,089	68,484	78,944	87,040	105,762	17.9	15.3	10.3	21.5
September	38,541	35,479	45,188	49,805	58,153	70,440	81,850	10.2	16.8	21.1	16.2
Q4	171,866	160,095	213,975	253,507	294,461	344,685	383,779	18.5	16.2	17.1	11.3
October	50,053	43,647	58,448	65,363	80,471	88,072	100,721	11.8	23.1	9.4	14.4
November	58,967	52,545	78,947	88,410	98,245	115,979	129,637	12.0	11.1	18.1	11.8
December	62,846	63,903	76,580	99,734	115,745	140,634	153,421	30.2	16.1	21.5	9.1
Total	668,504	583,984	712,672	835,172	1,005,499	1,181,281	1,355,693	17.2	20.4	17.5	14.8

International Tourist Arrivals to Siem Reap International Airport by Country of Residence in 2014

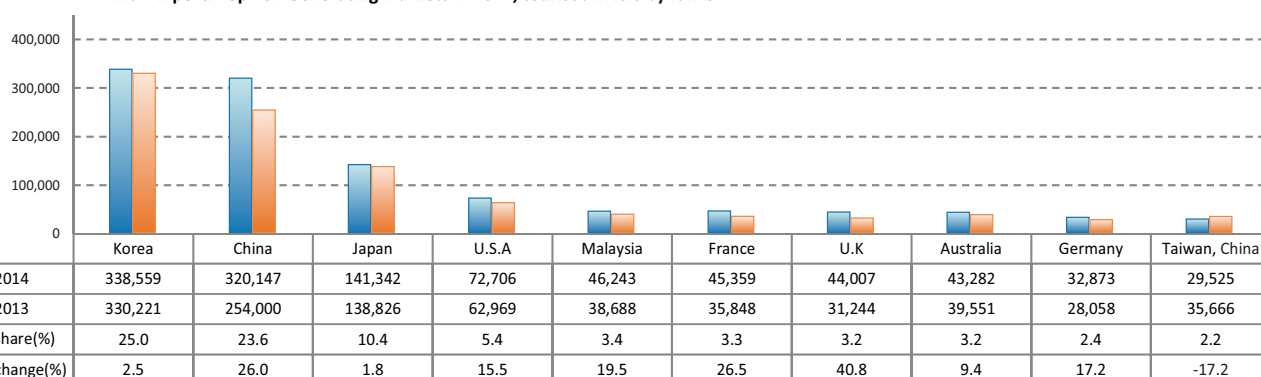
(by Air only)

Regions Country of Residence	2014												Total	Share (%) 2014*
	Jan	Feb	Mar	Apr	May	Jun	Jul	Aug	Sep	Oct	Nov	Dec		
GRAND TOTAL	169,494	157,439	126,965	93,885	73,215	70,933	92,371	105,762	81,850	100,721	129,637	153,421	1,355,693	100.0
Asia and the Pacific	130,906	122,251	91,515	66,820	56,234	53,905	69,476	78,950	67,327	75,933	90,691	111,811	1,015,819	74.9
ASEAN	6,802	7,257	8,810	7,428	10,438	11,604	9,956	8,928	7,940	9,635	12,260	14,820	115,878	8.5
Brunei Darussalam	36	40	51	19	33	58	25	28	6	28	36	44	404	0.0
Indonesia	221	224	369	218	429	329	450	384	213	394	377	403	4,011	0.3
Lao PDR	41	59	76	97	41	45	53	36	73	113	127	193	954	0.1
Malaysia	2,676	2,795	3,592	3,047	4,079	4,653	4,124	3,445	3,339	3,801	4,117	6,575	46,243	3.4
Myanmar	69	84	98	131	75	101	85	125	118	96	151	201	1,334	0.1
Philippines	1,633	1,582	1,436	1,272	2,085	1,787	1,505	1,657	1,597	1,750	2,167	1,555	20,026	1.5
Singapore	835	718	1,407	952	1,468	2,016	941	1,065	1,012	1,364	2,505	2,688	16,971	1.3
Thailand	919	952	1,030	924	1,176	1,342	1,262	1,247	894	1,415	1,839	2,348	15,348	1.1
Vietnam	372	803	751	768	1,052	1,273	1,511	941	688	674	941	813	10,587	0.8
Eastern Asia	117,322	110,883	77,601	55,296	41,939	38,205	54,237	65,468	53,969	60,681	72,521	89,135	837,257	61.8
China (RPC)	31,906	37,493	29,929	24,197	17,688	14,944	25,361	28,324	23,925	26,753	30,121	29,506	320,147	23.6
Hong Kong SAR	580	437	337	242	419	786	387	636	583	604	1,052	1,564	7,627	0.6
Japan	15,222	14,839	16,070	8,699	8,314	6,398	8,399	14,986	11,014	8,319	12,195	16,887	141,342	10.4
Korea (ROK)	65,880	55,019	28,600	20,096	13,276	14,161	17,914	19,326	16,327	22,699	26,803	38,458	338,559	25.0
Mongolia	6	8	3	4	4	3	2	9	1	4	3	10	57	0.0
Taiwan, China	3,728	3,087	2,662	2,058	2,238	1,913	2,174	2,187	2,119	2,302	2,347	2,710	29,525	2.2
Southern Asia	1,141	653	699	720	889	756	881	1,040	997	1,232	1,229	1,721	11,958	0.9
Afghanistan	3	0	4	0	2	4	1	0	2	0	3	2	21	0.0
Bangladesh	12	4	8	4	6	12	4	23	15	33	23	4	148	0.0
Bhutan	3	0	3	0	3	5	1	3	3	5	7	6	39	0.0
India	1,080	604	633	665	823	679	806	938	926	1,112	1,068	1,606	10,940	0.8
Nepal	20	13	26	23	12	21	25	28	19	33	61	33	314	0.0
Pakistan	10	10	10	13	8	16	8	18	8	16	31	25	173	0.0
Srilanka	13	22	15	15	35	19	36	30	24	33	36	45	323	0.0
Western Asia	54	78	28	33	16	29	27	25	19	23	33	44	409	0.0
Kazakhstan	46	75	27	30	13	20	25	21	17	15	32	39	360	0.0
Uzbekistan	8	3	1	3	3	9	2	4	2	8	1	5	49	0.0
Oceania	5,499	3,329	4,275	3,331	2,927	3,259	4,317	3,457	4,354	4,284	4,600	6,004	49,636	3.7
Australia	4,924	2,916	3,641	3,004	2,523	2,806	3,706	2,995	3,883	3,654	4,076	5,154	43,282	3.2
Fiji	1	1	1	0	4	4	4	5	0	2	14	6	42	0.0
New Zealand	486	361	531	315	375	397	549	425	423	550	462	757	5,631	0.4
Other Asia & the Pacific	88	51	102	12	25	52	58	32	48	78	48	87	681	0.1
Europe	23,665	23,214	23,733	18,185	10,221	9,844	15,251	20,129	9,079	15,982	26,486	27,218	223,007	16.4
Northern Europe	6,153	6,225	6,111	5,366	3,206	3,698	4,618	4,058	2,408	4,381	5,733	7,370	59,327	4.4
Denmark	520	661	399	241	144	287	346	240	146	263	231	352	3,830	0.3
Finland	206	222	140	78	46	50	54	53	81	50	174	360	1,514	0.1
Iceland	3	0	15	0	0	12	9	0	0	8	1	3	51	0.0
Ireland	303	241	216	231	161	293	359	200	113	216	198	257	2,788	0.2
Norway	303	330	246	239	94	136	340	106	62	119	381	415	2,771	0.2
Sweden	633	738	482	301	138	103	219	192	95	360	454	651	4,366	0.3
United Kingdom	4,185	4,033	4,613	4,276	2,623	2,817	3,291	3,267	1,911	3,365	4,294	5,332	44,007	3.2
Western Europe	10,917	12,017	12,108	8,712	4,732	4,011	6,161	7,409	3,272	7,074	13,440	12,805	102,658	7.6
Austria	429	484	451	203	109	99	253	252	114	175	534	504	3,607	0.3
Belgium	458	570	517	406	331	140	727	410	168	318	806	664	5,515	0.4
France	4,876	5,479	5,210	4,017	2,365	2,210	2,579	3,884	1,147	2,878	5,252	5,462	45,359	3.3
Germany	3,247	3,818	4,646	3,094	1,250	1,047	1,110	1,768	1,352	2,450	4,978	4,113	32,873	2.4
Luxembourg	38	28	20	20	8	14	9	26	5	12	19	28	227	0.0
Monaco	5	1	1	3	0	1	5	2	2	8	4	3	35	0.0
Netherlands	770	751	503	483	348	273	937	733	287	599	727	948	7,359	0.5
Switzerland	1,094	886	760	486	321	227	541	334	197	634	1,120	1,083	7,683	0.6
Eastern Europe	3,632	2,583	2,747	1,397	909	627	913	882	675	1,592	3,286	3,274	22,517	1.7
Bulgaria	52	57	86	59	48	15	15	9	26	30	69	115	581	0.0
Czech Republic	359	226	237	94	44	29	97	87	26	88	280	299	1,866	0.1
Estonia	53	72	34	16	9	5	11	19	7	63	107	61	457	0.0
Hungary	248	243	285	107	52	27	31	48	104	72	386	369	1,972	0.1
Lithuania	70	68	105	34	28	16	17	31	8	37	109	61	584	0.0
Poland	397	457	417	184	150	132	163	157	109	280	746	594	3,786	0.3
Romania	129	96	80	70	64	37	34	37	35	74	125	173	954	0.1
Russian Federation	1,926	1,172	1,341	679	410	319	482	405	277	793	1,181	1,333	10,318	0.8
Slovakia	157	62	75	73	26	17	20	28	37	90	112	86	783	0.1
Ukraine	241	130	87	81	78	30	43	61	46	65	171	183	1,216	0.1

International Tourist Arrivals to Siem Reap International Airport by Country of Residence in 2014 (by Air only)

Regions Country of Residence	2014													Share (%) 2014*
	Jan	Feb	Mar	Apr	May	Jun	Jul	Aug	Sep	Oct	Nov	Dec	Total	
GRAND TOTAL	169,494	157,439	126,965	93,885	73,215	70,933	92,371	105,762	81,850	100,721	129,637	153,421	1,355,693	100.0
Southern Europe	2,896	2,378	2,695	2,685	1,339	1,460	3,507	7,722	2,693	2,899	3,977	3,708	37,959	2.8
Croatia	32	39	17	24	7	2	8	15	16	11	49	57	277	0.0
Greece	88	131	27	27	17	10	42	61	9	22	48	38	520	0.0
Italy	1,332	1,011	1,393	1,081	387	470	954	2,249	442	483	1,355	1,546	12,703	0.9
Portugal	259	195	174	253	140	116	163	416	159	219	429	395	2,918	0.2
Serbia	30	27	14	13	6	8	1	85	43	10	22	19	278	0.0
Slovenia	54	41	41	30	6	11	21	9	4	16	22	30	285	0.0
Spain	824	695	784	941	672	751	2,131	4,780	1,890	1,878	1,792	1,306	18,444	1.4
Turkey	210	228	173	291	69	44	135	49	99	224	210	256	1,988	0.1
Other Europe	67	11	72	25	35	48	52	58	31	36	50	61	546	0.0
Americas	14,242	11,527	11,179	8,420	6,405	6,904	7,370	6,274	5,095	8,204	11,833	13,586	111,039	8.2
Argentina	645	529	541	387	181	150	65	77	62	178	344	184	3,343	0.2
Brazil	1,143	563	625	641	461	234	260	288	244	428	940	1,020	6,847	0.5
Canada	2,400	2,309	2,034	1,303	1,009	969	1,038	1,119	701	1,158	2,190	2,230	18,460	1.4
Chile	323	633	254	252	181	101	119	104	124	154	197	156	2,598	0.2
Colombia	152	60	58	82	91	103	156	100	91	153	137	150	1,333	0.1
Costa Rica	43	8	14	8	14	12	8	17	23	26	33	47	253	0.0
Ecuador	9	8	7	16	23	7	14	6	34	13	11	24	172	0.0
Mexico	205	223	264	352	337	353	536	260	339	395	394	520	4,178	0.3
Peru	42	42	17	50	29	33	43	40	33	57	58	51	495	0.0
United States	9,217	7,117	7,297	5,272	4,029	4,900	5,074	4,204	3,401	5,574	7,483	9,138	72,706	5.4
Uruguay	10	20	10	34	38	10	6	9	7	10	11	9	174	0.0
Other Americas	53	15	58	23	12	32	51	50	36	58	35	57	480	0.0
Africa	132	66	92	102	228	131	141	122	92	172	164	324	1,766	0.1
Cameroon	1	0	1	1	2	4	2	2	1	2	3	4	23	0.0
Congo	1	0	0	0	0	0	0	0	0	1	2	3	7	0.0
Ghana	1	0	0	1	2	1	0	1	1	2	2	1	12	0.0
Kenya	4	2	2	4	1	12	13	5	2	4	3	13	65	0.0
Liberia	1	0	0	0	0	0	0	0	0	0	1	0	2	0.0
Nigeria	2	5	3	7	6	3	8	4	9	3	8	10	68	0.0
Sudan	1	0	1	0	6	3	1	1	3	4	4	5	29	0.0
South Africa	112	54	79	86	205	99	114	105	70	146	125	256	1,451	0.1
Uganda	0	0	0	0	0	2	0	3	0	0	2	0	7	0.0
Other Africa	9	5	6	3	6	7	3	1	6	10	14	32	102	0.0
Middle East	549	381	446	358	127	149	133	287	257	430	463	482	4,062	0.3
Egypt	10	7	4	12	14	3	3	4	8	6	10	20	101	0.0
Iran	13	3	30	16	18	11	7	8	11	17	20	22	176	0.0
Iraq	0	1	3	2	8	5	2	12	4	3	4	1	45	0.0
Israel	507	362	389	299	78	120	106	236	219	378	388	401	3,483	0.3
Kuwait	1	0	5	6	0	2	4	2	1	3	4	1	29	0.0
Oman	4	2	2	1	2	1	2	7	2	3	5	2	33	0.0
Palestine	1	0	0	1	0	3	1	1	3	0	2	1	13	0.0
Qatar	1	3	0	1	0	0	0	0	0	1	2	0	8	0.0
Saudi Arabia	0	0	0	1	5	1	4	6	1	10	11	2	41	0.0
United Arab Emirates	2	0	1	2	0	1	1	3	3	0	1	2	16	0.0
Yemen	2	1	7	16	1	0	1	5	2	2	4	3	44	0.0
Other Middle East	8	2	5	1	1	2	2	3	3	7	12	27	73	0.0

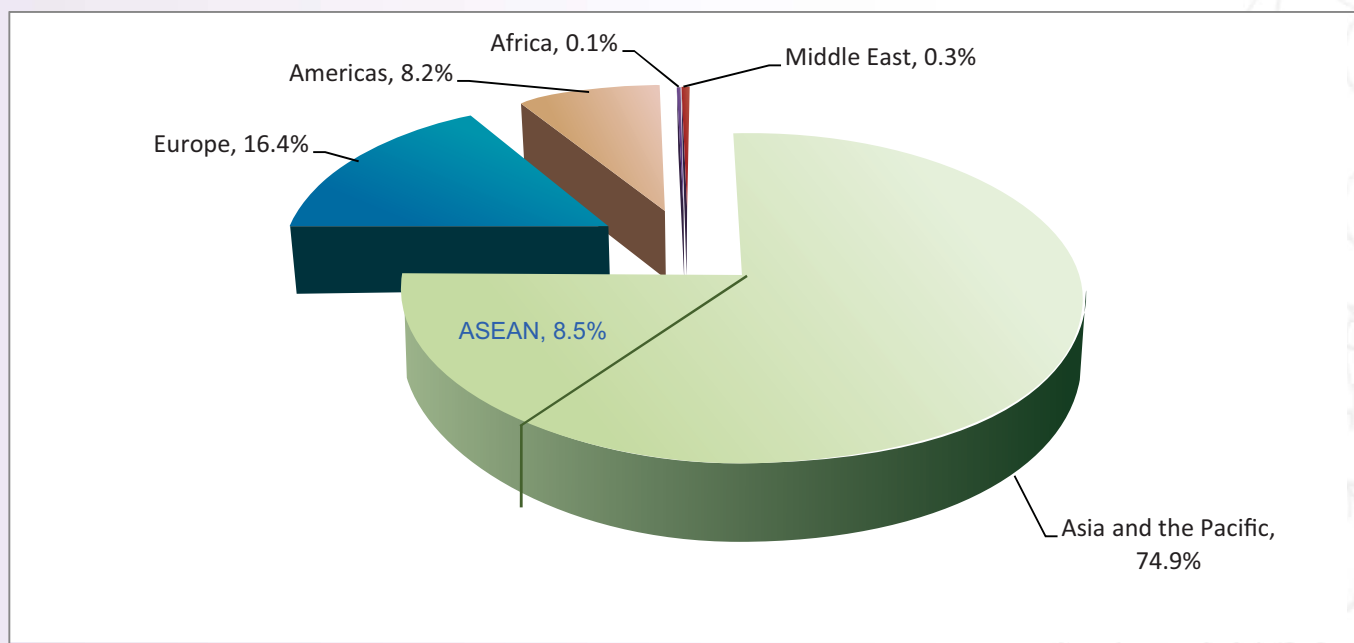
REP Int'l Airport: Top Ten Generating markets in 2014, tourist arrivals by ranks



International Tourist arrivals to Siem Reap International Airport by Regions in 2014

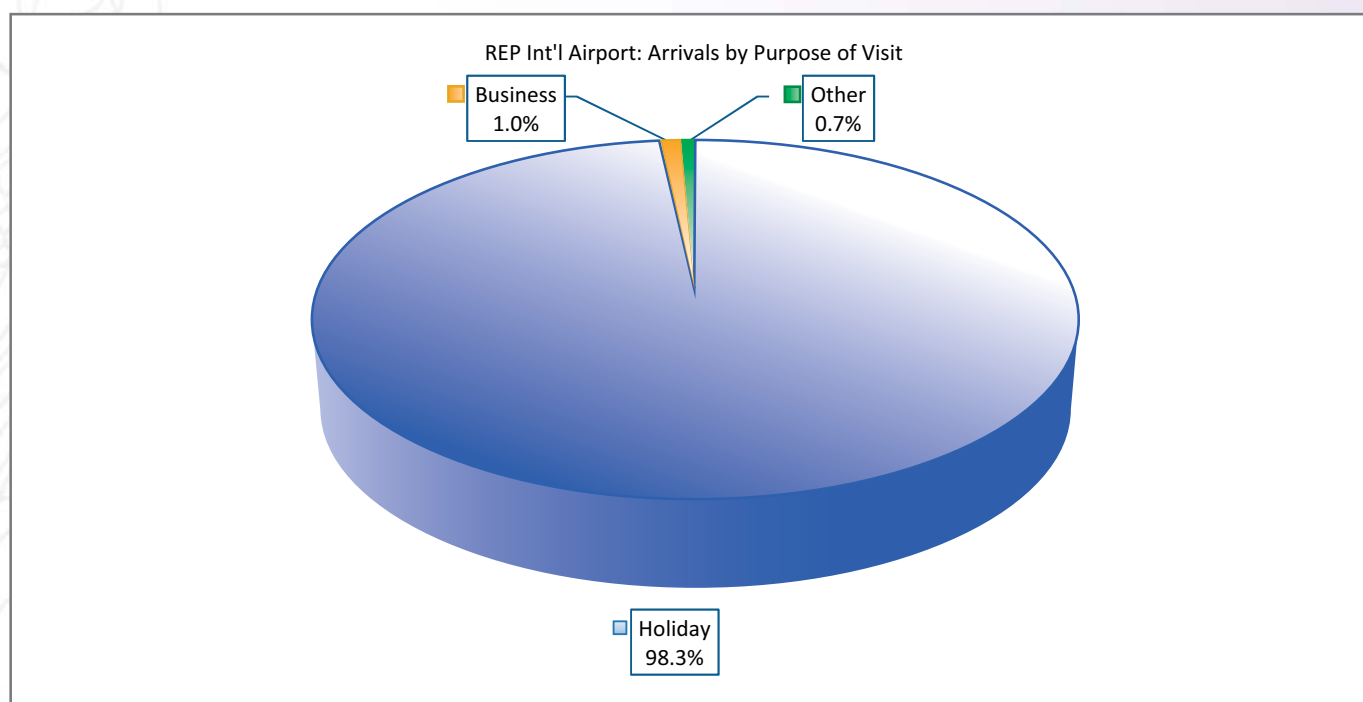
Months	Asia and the Pacific		Europe	Americas	Africa	Middle East	Total
		ASEAN					
Q1	344,672	22,869	70,612	36,948	290	1,376	453,898
January	130,906	6,802	23,665	14,242	132	549	169,494
February	122,251	7,257	23,214	11,527	66	381	157,439
March	91,515	8,810	23,733	11,179	92	446	126,965
Q2	176,959	29,470	38,250	21,729	461	634	238,033
April	66,820	7,428	18,185	8,420	102	358	93,885
May	56,234	10,438	10,221	6,405	228	127	73,215
June	53,905	11,604	9,844	6,904	131	149	70,933
Q3	215,753	26,824	44,459	18,739	355	677	279,983
July	69,476	9,956	15,251	7,370	141	133	92,371
August	78,950	8,928	20,129	6,274	122	287	105,762
September	67,327	7,940	9,079	5,095	92	257	81,850
Q4	278,435	36,715	69,686	33,623	660	1,375	383,779
October	75,933	9,635	15,982	8,204	172	430	100,721
November	90,691	12,260	26,486	11,833	164	463	129,637
December	111,811	14,820	27,218	13,586	324	482	153,421
Total	1,015,819	115,878	223,007	111,039	1,766	4,062	1,355,693
share (%)	74.9%	8.5%	16.4%	8.2%	0.1%	0.3%	100.0%

Note: ASEAN 10 countries was include in the Asia and the Pacific.



International Tourist Arrivals to Siem Reap International Airport by Purpose of Visit in 2008 - 2014

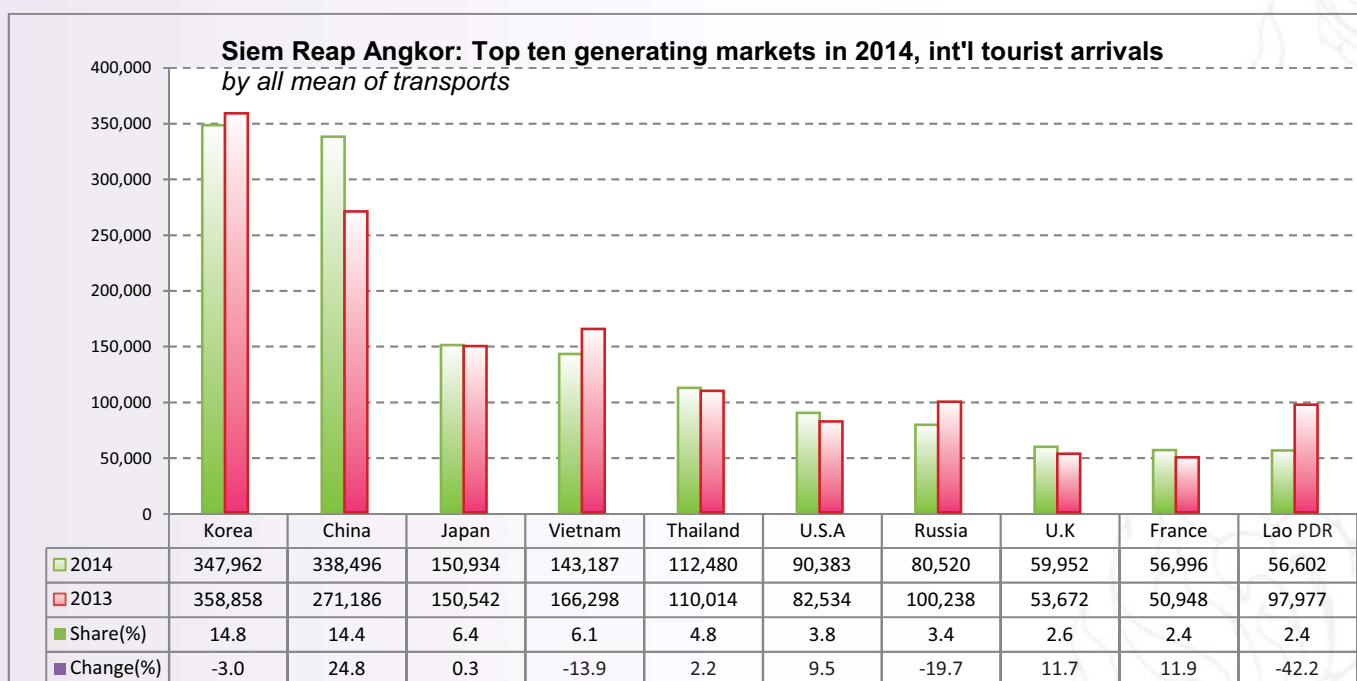
Purpose of Visit	Int'l tourist arrivals							Change (%)		
	2008	2009	2010	2011	2012	2013	2014	12/11	13/12	2014*/13
Total	668,504	583,984	712,672	835,172	1,005,499	1,181,281	1,355,693	20.4	17.5	14.8
Holiday	656,776	574,571	704,254	826,441	983,389	1,170,158	1,332,689	19.0	19.0	13.9
Business	7,063	4,720	4,658	5,316	6,929	7,385	13,840	30.3	6.6	87.4
Other	4,665	4,693	3,760	3,415	15,181	3,738	9,164	344.5	-75.4	145.2
Q1	237,857	193,717	212,527	256,871	326,348	392,248	453,898	27.0	20.2	15.7
Holiday	234,498	191,123	210,483	254,826	322,604	389,432	450,004	26.6	20.7	15.6
Business	2,036	1,533	1,111	1,296	1,672	1,959	2,380	29.0	17.2	21.5
Other	1,323	1,061	933	749	2,072	857	1,514	176.6	-58.6	76.7
Q2	133,099	108,811	134,855	147,038	181,245	210,297	238,033	23.3	16.0	13.2
Holiday	130,453	106,707	132,877	144,934	176,445	207,738	232,845	21.7	17.7	12.1
Business	1,741	1,079	1,222	1,187	1,682	1,719	3,265	41.7	2.2	89.9
Other	905	1,025	756	917	3,118	840	1,923	240.0	-73.1	128.9
Q3	125,682	121,361	151,315	177,756	203,445	234,051	279,983	14.5	15.0	19.6
Holiday	123,302	119,398	149,214	175,669	197,682	231,376	273,682	12.5	17.0	18.3
Business	1,526	978	1,123	1,308	1,729	1,864	3,689	32.2	7.8	97.9
Other	854	985	978	779	4,034	811	2,612	417.8	-79.9	222.1
Q4	171,866	160,095	213,975	253,507	294,461	344,685	383,779	16.2	17.1	11.3
Holiday	168,523	157,343	211,680	251,012	286,658	341,612	376,158	14.2	19.2	10.1
Business	1,760	1,130	1,202	1,525	1,846	1,843	4,506	21.0	-0.2	144.5
Other	1,583	1,622	1,093	970	5,957	1,230	3,115	514.1	-79.4	153.3



International Tourist Arrivals to Siem Reap Angkor by Mode of Transports in 2013 - 2014

(by all mean of transports)

Mode of Transports	2013	2014	Change (%)
			2014*/13
Air	1,368,057	1,611,076	17.8
International	1,181,281	1,355,693	14.8
Phnom Penh	186,776	255,383	36.7
Land	856,340	728,647	-14.9
Phnom Penh	267,845	273,742	2.2
Poi Pet	583,830	444,190	-23.9
O'Smach	2,846	6,690	135.1
Chorm	1,819	4,025	121.3
Waterways	13,089	11,214	-14.3
Phnom Penh	7,752	5,557	-28.3
Battambang	5,337	5,657	6.0
Total	2,237,486	2,350,937	5.1



SECTION III



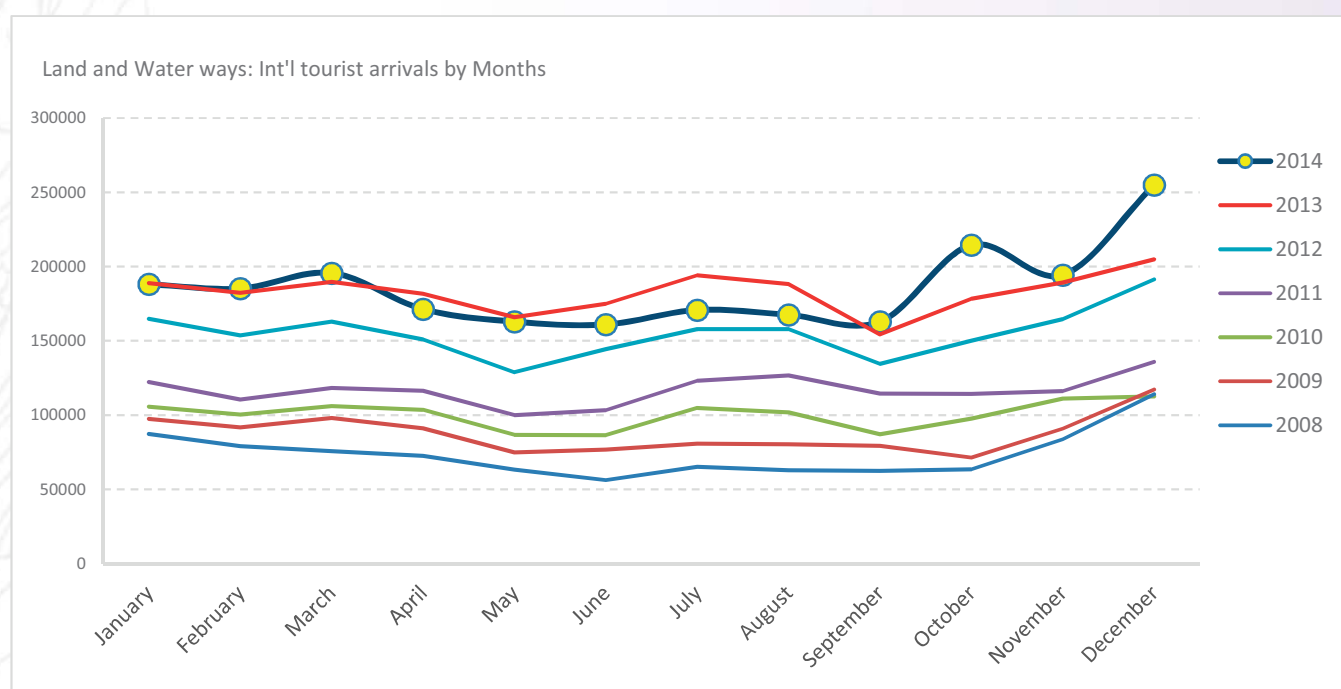
INTERNATIONAL BORDER CHECK POINTS



Kampong Speu Province

International Tourist Arrivals to Cambodia by Land and Water ways in 2008 - 2014

Months	2008	2009	2010	2011	2012	2013	2014	Change (%)			
								2011/10	2012/11	2013/12	2014*13
Q1	242,182	287,075	312,186	351,038	481,454	560,912	568,953	12.4	37.2	16.5	1.4
January	87,370	97,453	105,595	122,290	164,758	188,896	188115	15.8	34.7	14.7	-0.4
February	79,166	91,667	100,459	110,491	153,722	182,307	185195	10.0	39.1	18.6	1.6
March	75,646	97,955	106,132	118,257	162,974	189,709	195643	11.4	37.8	16.4	3.1
Q2	192,006	243,009	276,597	319,618	424,319	522,472	495,231	15.6	32.8	23.1	-5.2
April	72,598	91,170	103,490	116,367	151,022	181,652	171370	12.4	29.8	20.3	-5.7
May	63,211	74,979	86,622	99,989	128,822	165,860	162870	15.4	28.8	28.8	-1.8
June	56,197	76,860	86,485	103,262	144,475	174,960	160991	19.4	39.9	21.1	-8.0
Q3	190,503	240,249	293,770	364,473	450,347	536,600	501,218	24.1	23.6	19.2	-6.6
July	65,207	80,700	104,792	123,185	157,877	194,112	170740	17.6	28.2	23.0	-12.0
August	62,914	80,283	101,777	126,763	157,899	188,159	167554	24.5	24.6	19.2	-11.0
September	62,382	79,266	87,201	114,525	134,571	154,329	162924	31.3	17.5	14.7	5.6
Q4	261,367	279,515	321,436	366,326	506,104	572,523	663,880	14.0	38.2	13.1	16.0
October	63,543	71,434	97,714	114,368	150,051	178,350	214541	17.0	31.2	18.9	20.3
November	83,758	90,844	111,142	116,124	164,649	189,328	194376	4.5	41.8	15.0	2.7
December	114,066	117,237	112,580	135,834	191,404	204,845	254963	20.7	40.9	7.0	24.5
Total	886,058	1,049,848	1,203,989	1,401,455	1,862,224	2,192,507	2,229,282	16.4	32.9	17.7	1.7



Int'l Tourist Arrivals to Cambodia by Land and Waterways by Country of Residence in 2014

(by Land and waterway)

Regions Country of Residence	2014													Share (%)
	Jan	Feb	Mar	Apr	May	Jun	Jul	Aug	Sep	Oct	Nov	Dec	Total	2014*
GRAND TOTAL	188,115	185,195	195,643	171,370	162,870	160,991	170,740	167,554	162,924	214,541	194,376	254,963	2,229,282	100.0
Asia and the Pacific	124,505	130,212	149,722	140,392	141,537	145,972	143,756	145,651	148,181	193,904	160,662	213,709	1,838,203	82.5
ASEAN	105,958	114,364	133,933	126,493	129,656	129,255	130,957	135,368	135,858	180,232	147,805	195,677	1,665,556	74.7
Brunei Darussalam	0	0	6	8	9	8	6	0	0	1	31	72	141	0.0
Indonesia	1,557	1,574	1,595	1,721	2,044	1,743	2,030	1,658	1,723	1,735	1,980	2,352	21,712	1.0
Lao PDR	33,642	30,612	34,038	23,277	31,103	33,372	42,775	34,727	41,626	51,360	44,458	55,688	456,678	20.5
Malaysia	1,147	1,314	2,732	1,775	1,223	1,274	1,227	1,244	806	1,741	1,369	2,203	18,055	0.8
Myanmar	145	98	75	442	136	103	104	119	120	105	179	213	1,839	0.1
Philippines	7,429	6,608	7,220	7,814	7,950	5,526	2,517	3,090	2,937	3,059	3,022	7,870	65,042	2.9
Singapore	566	454	614	543	515	488	393	279	401	438	475	741	5,907	0.3
Thailand	12,191	12,509	15,078	14,565	14,282	11,658	14,765	24,170	23,892	33,143	18,468	27,039	221,760	9.9
Vietnam	49,281	61,195	72,575	76,348	72,394	75,083	67,140	70,081	64,353	88,650	77,823	99,499	874,422	39.2
Eastern Asia	10,980	11,865	12,731	9,518	9,445	13,666	7,255	7,663	7,449	10,423	9,245	10,050	120,290	5.4
China (RPC)	2,831	4,558	3,997	4,966	5,982	6,897	2,608	2,792	3,185	6,024	5,183	4,516	53,539	2.4
Hong Kong SAR	106	52	118	211	126	127	179	90	170	229	252	379	2,039	0.1
Japan	1,879	2,066	4,172	1,541	1,414	3,123	1,511	1,967	1,970	1,951	1,424	1,636	24,654	1.1
Korea (ROK)	5,435	4,434	3,992	1,655	1,059	2,476	2,008	1,917	1,414	1,380	1,677	2,579	30,026	1.3
Mongolia	23	9	7	7	6	5	16	8	3	2	6	10	102	0.0
Taiwan, China	706	746	445	1,138	858	1,038	933	889	707	837	703	930	9,930	0.4
Southern Asia	647	459	513	534	478	563	585	402	355	535	568	831	6,470	0.3
Afghanistan	1	10	5	1	2	30	1	1	0	3	2	2	58	0.0
Bangladesh	34	34	10	6	5	11	17	0	10	4	16	26	173	0.0
Bhutan	6	0	0	1	2	1	1	0	0	0	0	5	16	0.0
India	560	364	439	404	403	462	510	348	274	466	467	723	5,420	0.2
Nepal	27	35	34	102	45	48	46	33	52	36	65	52	575	0.0
Pakistan	6	6	8	7	4	6	2	13	2	12	8	7	81	0.0
Srilanka	13	10	17	13	17	5	8	7	17	14	10	16	147	0.0
Western Asia	630	326	228	127	75	45	85	75	80	115	202	179	2,167	0.1
Kazakhstan	581	288	205	103	50	26	51	48	58	93	144	149	1,796	0.1
Uzbekistan	49	38	23	24	25	19	34	27	22	22	58	30	371	0.0
Oceania	6,260	3,189	2,245	3,587	1,772	2,208	4,793	1,992	4,247	2,263	2,735	6,751	42,042	1.9
Australia	5,232	2,809	2,064	3,111	1,442	1,836	4,116	1,617	3,827	1,906	2,273	5,838	36,071	1.6
Fiji	2	2	9	4	0	0	0	1	1	0	1	5	25	0.0
New Zealand	1,026	378	172	472	330	372	677	374	419	357	461	908	5,946	0.3
Other Asia & the Pacific	30	9	72	133	111	235	81	151	192	336	107	221	1,678	0.1
Europe	52,732	44,618	36,980	24,529	15,645	10,515	21,211	18,946	11,523	16,061	28,086	31,840	312,686	14.0
Northern Europe	11,258	9,668	8,789	6,360	4,753	3,832	7,313	4,645	3,080	4,330	6,520	8,360	78,908	3.5
Denmark	990	1,093	638	515	304	45	534	37	40	203	413	474	5,286	0.2
Finland	652	463	356	241	107	141	112	70	87	105	244	534	3,112	0.1
Iceland	68	49	70	25	17	1	23	15	9	58	19	37	391	0.0
Ireland	534	396	395	371	306	294	757	447	215	261	478	358	4,812	0.2
Norway	791	777	605	468	197	144	359	121	117	245	322	322	4,468	0.2
Sweden	1,823	1,348	991	564	303	206	388	63	181	186	614	1,330	7,997	0.4
United Kingdom	6,400	5,542	5,734	4,176	3,519	3,001	5,140	3,892	2,431	3,272	4,430	5,305	52,842	2.4
Western Europe	15,443	13,457	11,294	7,973	5,181	2,368	8,480	7,695	3,875	5,166	9,714	10,883	101,529	4.6
Austria	723	621	448	330	154	115	266	182	188	190	347	418	3,982	0.2
Belgium	702	599	456	529	316	247	783	351	214	269	652	484	5,602	0.3
France	4,986	4,859	4,390	3,060	1,918	471	3,638	3,540	1,259	1,857	3,632	3,710	37,320	1.7
Germany	5,680	4,876	4,267	2,409	1,760	744	1,468	2,074	1,565	1,736	3,321	3,864	33,764	1.5
Luxembourg	25	10	17	4	6	5	10	22	5	9	14	27	154	0.0
Monaco	13	0	6	0	1	0	0	0	6	19	0	7	52	0.0
Netherlands	1,992	1,584	1,244	920	705	573	1,706	1,192	462	710	1,026	1,419	13,533	0.6
Switzerland	1,322	908	466	721	321	213	609	334	176	376	722	954	7,122	0.3
Eastern Europe	23,163	18,998	14,862	8,545	4,760	3,158	4,166	3,025	3,340	4,779	9,977	9,954	108,727	4.9
Bulgaria	57	56	67	17	17	7	8	6	9	15	38	50	347	0.0
Czech Republic	478	461	352	242	80	58	131	121	58	76	358	283	2,698	0.1
Estonia	138	183	107	43	15	12	6	14	34	15	57	113	737	0.0
Hungary	221	253	6	132	37	21	17	29	31	56	23	129	955	0.0
Lithuania	198	143	141	41	15	27	14	10	22	51	109	105	876	0.0
Poland	1,355	1,272	852	324	232	152	346	244	237	345	1,172	1,028	7,559	0.3
Romania	67	66	41	27	9	15	17	35	11	38	21	79	426	0.0
Russian Federation	19,457	15,726	12,660	7,388	4,177	2,747	3,439	2,443	2,827	3,990	7,735	7,731	90,320	4.1
Slovakia	150	150	174	100	52	36	61	22	13	29	132	73	992	0.0
Ukraine	1,042	688	462	231	126	83	127	101	98	164	332	363	3,817	0.2

Int'l Tourist Arrivals to Cambodia by Land and Waterways by Country of Residence in 2014 (by Land and waterway)

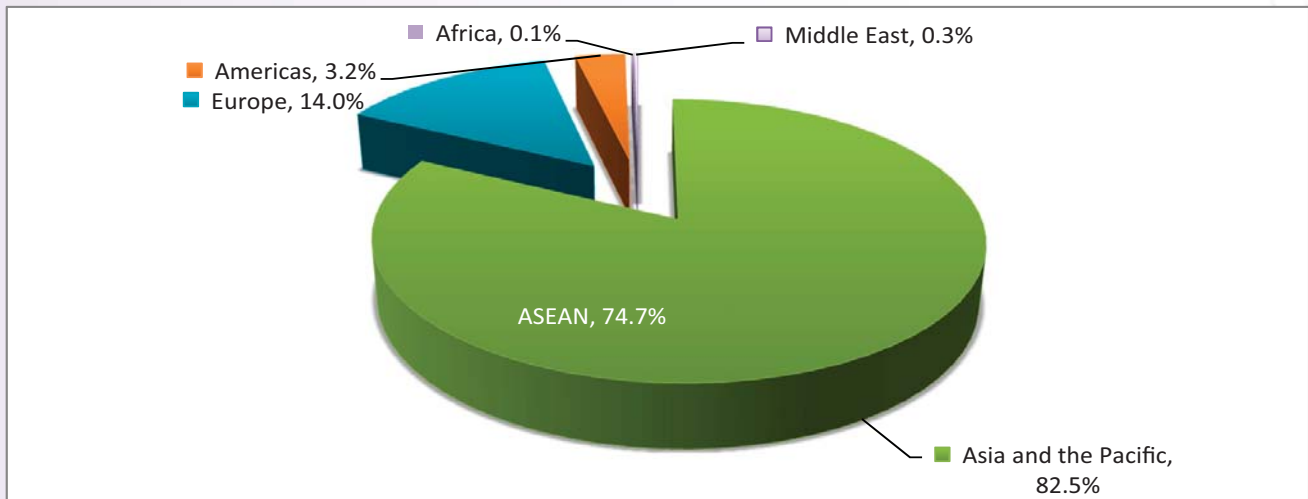
Regions Country of Residence	2014													Share (%) 2014*
	Jan	Feb	Mar	Apr	May	Jun	Jul	Aug	Sep	Oct	Nov	Dec	Total	
GRAND TOTAL	188,115	185,195	195,643	171,370	162,870	160,991	170,740	167,554	162,924	214,541	194,376	254,963	2,229,282	100.0
Southern Europe	2,839	2,488	1,921	1,543	867	881	1,248	3,479	1,134	1,455	1,810	2,430	22,095	1.0
Croatia	92	52	49	24	5	5	22	18	10	11	57	79	424	0.0
Greece	56	46	33	18	20	10	14	50	10	13	16	69	355	0.0
Italy	1,575	1,384	1,035	569	374	281	156	1,655	382	587	724	1,140	9,862	0.4
Portugal	29	102	69	81	45	53	97	196	52	94	106	225	1,149	0.1
Serbia	46	58	22	11	9	2	15	8	5	10	19	52	257	0.0
Slovenia	107	116	86	22	19	15	31	24	14	29	42	129	634	0.0
Spain	671	562	467	723	306	446	797	1,451	608	598	734	568	7,931	0.4
Turkey	263	168	160	95	89	69	116	77	53	113	112	168	1,483	0.1
Other Europe	29	7	114	108	84	276	4	102	94	331	65	213	1,427	0.1
Americas	9,737	9,355	8,481	5,961	5,285	4,251	5,466	2,604	2,855	4,195	5,163	8,269	71,622	3.2
Argentina	491	326	245	156	124	60	111	77	99	104	105	142	2,040	0.1
Brazil	259	203	234	140	141	110	149	72	60	103	115	268	1,854	0.1
Canada	2,445	2,609	2,151	1,407	1,386	868	1,191	257	444	805	1,464	1,893	16,920	0.8
Chile	307	255	179	139	120	137	140	72	88	105	113	135	1,790	0.1
Colombia	49	33	24	42	28	66	47	42	23	14	44	53	465	0.0
Costa Rica	5	5	3	7	4	3	8	8	17	6	5	14	85	0.0
Ecuador	27	17	4	2	4	5	5	6	10	5	7	21	113	0.0
Mexico	134	39	53	101	53	42	91	34	42	41	48	173	851	0.0
Peru	13	26	14	19	18	14	28	24	10	13	30	58	267	0.0
United States	5,938	5,825	5,471	3,849	3,000	2,821	3,658	1,905	1,968	2,782	3,073	5,384	45,674	2.0
Uruguay	9	14	25	29	347	10	13	7	13	10	36	10	523	0.0
Other Americas	60	3	78	70	60	115	25	100	81	207	123	118	1,040	0.0
Africa	296	187	134	134	115	158	188	189	142	155	114	543	2,355	0.1
Cameroon	5	9	6	4	10	6	9	7	2	7	3	3	71	0.0
Congo	4	1	4	0	1	0	0	1	3	1	1	3	19	0.0
Ghana	0	41	0	0	0	0	0	0	0	1	3	6	51	0.0
Kenya	2	4	3	1	1	4	0	1	4	1	1	5	27	0.0
Liberia	0	2	0	0	0	0	2	0	0	0	1	17	22	0.0
Nigeria	21	5	2	5	4	8	6	5	12	17	27	16	128	0.0
Sudan	0	0	0	0	1	0	1	0	1	0	0	1	4	0.0
South Africa	232	120	116	116	90	111	163	154	108	103	64	463	1,840	0.1
Uganda	1	0	0	1	1	0	0	0	0	2	1	13	19	0.0
Other Africa	31	5	3	7	7	29	7	21	12	23	13	16	174	0.0
Middle East	1,000	885	500	391	348	195	229	254	302	340	449	750	5,643	0.3
Egypt	2	5	4	3	0	4	5	7	2	6	1	10	49	0.0
Iran	28	18	17	10	7	5	10	4	4	23	2	9	137	0.0
Iraq	0	0	0	0	0	0	0	2	1	2	1	2	8	0.0
Israel	847	746	412	278	235	72	169	114	171	243	405	661	4,353	0.2
Kuwait	71	93	44	75	82	73	13	101	92	40	23	31	738	0.0
Oman	21	4	7	5	6	8	13	3	4	0	4	6	81	0.0
Palestine	1	0	0	0	0	0	1	0	0	0	0	1	3	0.0
Qatar	0	3	1	0	0	0	0	2	0	0	1	4	11	0.0
Saudi Arabia	5	4	2	0	3	0	1	1	0	1	1	4	22	0.0
United Arab Emirates	4	1	4	2	6	5	16	9	16	3	0	8	74	0.0
Yemen	2	5	5	8	5	1	0	0	0	0	1	3	30	0.0
Other Middle East	19	6	4	10	4	27	1	11	12	22	10	11	137	0.0



International Tourist Arrivals to Cambodia by Land and Water ways by Regions in 2014

Months	Asia and the Pacific		Europe	Americas	Africa	Middle East	Total
	ASEAN						
Q1	404,439	354,255	134,330	27,573	617	2,385	568,953
January	124,505	105,958	52,732	9,737	296	1,000	188,115
February	130,212	114,364	44,618	9,355	187	885	185,195
March	149,722	133,933	36,980	8,481	134	500	195,643
Q2	427,901	385,404	50,689	15,497	407	934	495,231
April	140,392	126,493	24,529	5,961	134	391	171,370
May	141,537	129,656	15,645	5,285	115	348	162,870
June	145,972	129,255	10,515	4,251	158	195	160,991
Q3	437,588	402,183	51,680	10,925	519	785	501,218
July	143,756	130,957	21,211	5,466	188	229	170,740
August	145,651	135,368	18,946	2,604	189	254	167,554
September	148,181	135,858	11,523	2,855	142	302	162,924
Q4	568,275	523,714	75,987	17,627	812	1,539	663,880
October	193,904	180,232	16,061	4,195	155	340	214,541
November	160,662	147,805	28,086	5,163	114	449	194,376
December	213,709	195,677	31,840	8,269	543	750	254,963
Total	1,838,203	1,665,556	312,686	71,622	2,355	5,643	2,229,282
share (%)	82.5%	74.7%	14.0%	3.2%	0.1%	0.3%	100.0%

Note: ASEAN 10 countries was include in the Asia and the Pacific.



International Tourist Arrivals to Cambodia by Land and Waterways by Purpose of Visit in 2008 - 2014

Purpose of Visit	Int'l tourist arrivals							Change (%)			
	2008	2009	2010	2011	2012	2013	2014	11/10	12/11	13/12	2014*/13
Total	886,058	1,049,848	1,203,989	1,401,455	1,862,224	2,192,507	2,229,282	16.4	32.9	17.7	1.7
Holiday	816,218	994,433	1,148,858	1,346,524	1,771,277	2,128,206	2,168,574	17.2	31.5	20.2	1.9
Business	61,431	46,179	45,987	46,846	53,364	55,426	38,452	1.9	13.9	3.9	-30.6
Other	8,409	9,236	9,144	8,085	37,583	8,875	22,256	-11.6	364.8	-76.4	150.8
Q1	242,182	287,075	312,186	351,038	481,454	560,912	568,953	12.4	37.2	16.5	1.4
Holiday	225,121	273,078	298,831	338,057	455,413	546,558	561,670	13.1	34.7	20.0	2.8
Business	14,938	11,834	11,257	11,032	10,747	12,264	5,313	-2.0	-2.6	14.1	-56.7
Other	2,123	2,163	2,098	1,949	15,294	2,090	1,970	-7.1	684.7	-86.3	-5.7
Q2	192,006	243,009	276,597	319,618	424,319	522,472	495,231	15.6	32.8	23.1	-5.2
Holiday	173,996	228,833	262,426	304,828	402,093	505,229	482,622	16.2	31.9	25.6	-4.5
Business	15,769	11,697	11,797	12,581	13,812	14,447	10,588	6.6	9.8	4.6	-26.7
Other	2,241	2,479	2,374	2,209	8,414	2,796	2,021	-7.0	280.9	-66.8	-27.7
Q3	190,503	240,249	293,770	364,473	450,347	536,600	501,218	24.1	23.6	19.2	-6.6
Holiday	173,112	227,026	281,572	350,709	429,512	521,200	486,973	24.6	22.5	21.3	-6.6
Business	15,498	11,073	10,183	11,801	13,303	13,072	12,023	15.9	12.7	-1.7	-8.0
Other	1,893	2,150	2,015	1,963	7,532	2,328	2,222	-2.6	283.7	-69.1	-4.6
Q4	261,367	279,515	321,436	366,326	506,104	572,523	663,880	14.0	38.2	13.1	16.0
Holiday	243,989	265,496	306,029	352,930	484,259	555,219	637,309	15.3	37.2	14.7	14.8
Business	15,226	11,575	12,750	11,432	15,502	15,643	10,528	-10.3	35.6	0.9	-32.7
Other	2,152	2,444	2,657	1,964	6,343	1,661	16,043	-26.1	223.0	-73.8	865.9

UNIT II



DOMESTIC TOURISM





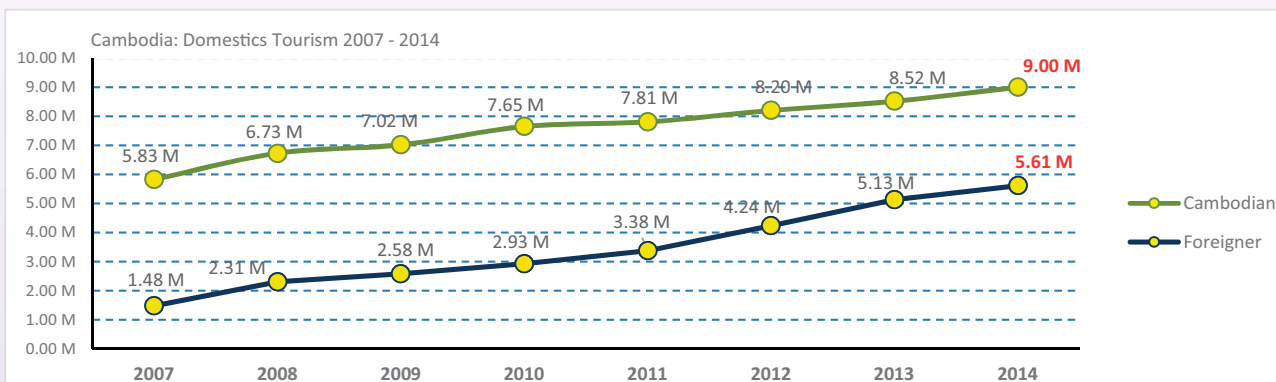
Leng Khen Waterfall, Mondulkiri Province

Domestic Tourism: Statistics Report in 2010 - 2014

No.	Destinations	2010		2011		2012		2013		2014		share (%)		change (%)	
		KHM	INT	KHM	INT	KHM	INT	KHM	INT	KHM	INT	2014*	2014*13		
													KHM	INT	KHM
I	1 Phnom Penh	2,001,850	1,203,033	2,124,065	1,307,498	1,984,612	1,520,971	2,204,573	1,972,879	2,257,498	2,151,838	25.1	38.3	2.4	9.1
II	Cultural Zone	1,744,768	1,333,642	1,815,755	1,644,267	2,125,322	2,107,982	2,345,567	2,290,778	2,865,457	2,414,737	31.8	43.0	22.2	5.4
	2 Kampong Thom	53,130	16,165	58,587	21,882	75,505	22,272	71,538	27,179	83,389	23,765	0.9	0.4	16.6	-12.6
	3 Oddar Meanchey	93,304	972	23,312	1,767	43,598	3,186	34,272	1,763	48,331	2,360	0.5	0.0	41.0	33.9
	4 Preah Vihear	21,087	11,249	32,506	10,542	48,361	19,188	46,757	24,550	60,787	37,675	0.7	0.7	30.0	53.5
	5 Siem Reap	1,577,247	1,305,256	1,701,350	1,610,076	1,957,858	2,063,336	2,193,000	2,237,286	2,672,950	2,350,937	29.7	41.9	21.9	5.1
III	Coastal Zone	1,200,413	162,080	1,691,829	193,093	1,827,927	280,658	2,080,790	513,891	2,115,489	600,367	23.5	10.7	1.7	16.8
	6 Kampong Som	491,134	133,532	558,287	153,736	657,821	212,643	731,604	302,325	969,109	358,639	10.8	6.4	32.5	18.6
	7 Kampot	238,147	16,940	316,376	17,198	401,528	24,972	614,610	117,280	679,933	131,468	7.6	2.3	10.6	12.1
	8 Kep	372,092	6,922	740,313	8,763	685,780	35,316	638,496	46,840	300,599	61,982	3.3	1.1	-52.9	32.3
	9 Koh Kong	99,040	4,686	76,853	13,396	82,798	7,727	96,080	47,446	165,848	48,278	1.8	0.9	72.6	1.8
IV	Eco-tourism	226,495	43,409	285,783	48,674	371,127	53,388	407,551	60,501	444,918	60,031	4.9	1.1	9.2	-0.8
	10 Kratie	22,408	13,733	35,941	17,296	48,412	19,714	46,546	22,766	67,757	23,662	0.8	0.4	45.6	3.9
	11 Mondul Kiri	40,652	3,916	58,757	4,879	78,784	5,138	95,059	5,215	108,716	6,498	1.2	0.1	14.4	24.6
	12 Rattanak Kiri	100,605	17,961	100,930	17,562	134,965	19,163	145,633	20,280	153,978	21,126	1.7	0.4	5.7	4.2
	13 Stung Treng	62,830	7,799	90,155	8,937	108,966	9,373	120,313	12,240	114,467	8,745	1.3	0.2	-4.9	-28.6
V	Battambang Zone	594,953	118,583	606,885	136,204	595,328	228,130	687,848	191,899	772,769	171,156	8.6	3.0	12.3	-10.8
	14 Banteay Meanchey	75,205	12,530	77,331	12,157	80,276	15,378	79,604	1,902	97,888	2,303	1.1	0.0	23.0	21.1
	15 Battambang	226,541	40,562	288,598	58,941	317,010	72,314	392,583	83,403	437,345	89,152	4.9	1.6	11.4	6.9
	16 Pailin	244,027	62,571	233,535	62,047	188,240	136,586	197,225	101,919	201,998	73,410	2.2	1.3	2.4	-28.0
	17 Pursat	49,180	2,920	7,421	3,059	9,802	3,852	18,436	4,675	35,538	6,291	0.4	0.1	92.8	34.6
VI	Others	1,794,220	67,494	1,286,748	48,034	1,349,544	49,581	792,424	97,619	548,306	214,138	6.1	3.8	-30.8	119.4
	18 Kampong Cham	286,820	27,487	233,439	11,222	276,194	10,976	403,684	54,865	347,869	31,554	3.9	0.6	-13.8	-42.5
	19 Kampong Chhnang	11,327	3,306	15,484	4,335	14,484	3,428	24,162	3,417	26,459	3,622	0.3	0.1	9.5	6.0
	20 Kampong Speu	23,265	14,341	17,060	12,127	22,701	13,511	22,632	12,545	23,391	12,628	0.3	0.2	3.4	0.7
	21 Kandal	1,407,725	7,687	958,491	5,186	963,128	7,552	253,784	12,564	54,266	9,536	0.6	0.2	-78.6	-24.1
	22 Prey Veng	14,254	2,343	10,761	1,602	9,682	3,046	8,634	2,730	7,783	2,208	0.1	0.0	-9.9	-19.1
	23 Svay Rieng	13,025	850	12,257	1,607	20,679	1,042	22,830	1,711	30,381	585	0.3	0.0	33.1	-65.8
	24 Takeo	37,804	11,480	39,256	11,955	42,676	10,026	56,698	9,787	42,706	9,224	0.5	0.2	-24.7	-5.8
	25 Thbong Khmum									15,451	144,781				
	TOTAL	7,562,699	2,928,241	7,811,065	3,377,770	8,253,860	4,240,710	8,518,753	5,127,567	9,004,437	5,612,267	100.0	100.0	5.7	9.5

Note:

KHM: Cambodian Visitors
INT: Foreign Visitors





Tsubasa Bridge,

UNIT III



TOURISM SUPPLY





Tourism Supply Side: Accommodations

Number of Hotels and Guesthouse from 1997 - 2014

Years	Hotels				Guesthouse			
	number	change (%)	rooms	change (%)	number	change (%)	rooms	change (%)
1997	179	0	6,989	0	60	0	477	0
1998	216	20.7	8,247	18.0	147	145.0	1,510	216.6
1999	221	2.3	9,115	10.5	186	26.5	1,897	25.6
2000	240	8.6	9,673	6.1	292	57.0	3,233	70.4
2001	247	2.9	10,804	11.7	370	26.7	3,899	20.6
2002	267	8.1	11,426	5.8	509	37.6	6,109	56.7
2003	292	9.4	13,201	15.5	549	7.9	6,497	6.4
2004	299	2.4	14,271	8.1	615	12.0	7,684	18.3
2005	317	6.0	15,465	8.4	684	11.2	9,000	17.1
2006	351	10.7	17,914	15.8	742	8.5	9,166	1.8
2007	395	12.5	20,470	14.3	891	20.1	11,563	26.2
2008	398	0.8	20,678	1.0	925	3.8	12,180	5.3
2009	451	13.3	23,010	11.3	1,018	10.1	14,512	19.1
2010	440	-2.4	24,393	6.0	1,087	6.8	15,321	5.6
2011	476	8.2	26,484	8.6	1,142	5.1	16,752	9.3
2012	490	2.9	27,117	2.4	1,296	13.5	19,329	15.4
2013	545	11.2	29,937	10.4	1,462	12.8	21,286	10.1
2014	554	1.7	29,729	-0.7	1,563	6.9	22,256	4.6

Tourism Services Statistics in 2014

No.	Destinations	Hotels		Guesthouses		Tours Operators	Tours Guides	Restaurant	Massage	Karaoke	Casino	Resorts
		Numbers	Rooms	Numbers	Rooms							
I	Phnom Penh	170	7,807	477	6,612	302	387	352	97	165	1	13
II	Cultural Areas	189	12,080	330	5,109	271	4,478	270	66	67	3	79
1	Kampong Thom	5	166	33	438		7	46	5	25		21
2	Oddar Meanchey	4	244	18	400			25	7	16	3	44
3	Preah Vihear	5	50	25	344		14	8		9		14
4	Siem Reap	175	11,620	254	3,927	271	4,457	191	54	17		
III	Costal Areas	75	4,340	345	4,864	17	8	190	43	46	10	53
1	Kampong Som	54	2,697	187	2,734	15		84	14	9	7	22
2	Kampot	8	796	98	1,166		8	64	14	12	2	14
3	Kep	6	70	22	302			22				13
4	Koh Kong	7	777	38	662	2		20	15	25	1	4
IV	Eco-tourism	32	1,296	109	1,773	1	21	126	10	45	2	51
1	Kratie	10	346	14	213	1	10	28	2	7	2	15
2	Mondul Kiri	4	191	40	535		11	41	3	17		7
3	Rattanak Kiri	14	508	35	508			37		12		12
4	Stung Treng	4	251	20	517			20	5	9		17
V	Battambang Areas	45	2,424	80	1,201	21	0	83	14	44	12	43
1	Banteay Meanchey	4	193	15	195	13		15	3	10	7	10
2	Battambang	32	1,620	34	614	8		31	4	13		18
3	Pailin	4	258	10	134			18		10	5	6
4	Pursat	5	353	21	258			19	7	11		9
VI	Others	43	1,782	222	2,697	1	1	199	10	152	23	39
1	Kampong Cham	12	783	59	804		1	18	4	23	4	1
2	Kampong Chhnang	8	234	17	200			34	1	9		
3	Kampong Speu	3	93	15	197			38		17		8
4	Kandal	1	29	16	191			11		8	4	7
5	Prey Veng	9	200	25	248			22	1	27	2	9
6	Svay Rieng	5	178	30	283	1		21	1	34	12	1
7	Takeo	1	5	36	424			13	2	13	1	13
8	Thbong Khmum	4	260	24	350			42	1	21		
	TOTAL	554	29,729	1,563	22,256	613	4,895	1,220	240	519	51	278

Tourism Supply Side: Tourism Services

Number of travel agencies and tours operators from 1996 - 2014

Years	Offices			change (%)
	head	branch	Total	
1996	81	35	116	0
1997	78	37	115	-0.9%
1998	103	34	137	19.1%
1999	117	43	160	16.8%
2000	140	64	204	27.5%
2001	166	70	236	15.7%
2002	186	73	259	9.7%
2003	186	84	270	4.2%
2004	208	94	302	11.9%
2005	237	99	336	11.3%
2006	277	105	382	13.7%
2007	333	118	451	18.1%
2008	354	119	473	4.9%
2009	372	113	485	2.5%
2010	392	115	507	4.5%
2011	404	185	589	16.2%
2012	457	108	565	-4.1%
2013	513	100	613	8.5%
2014	505	108	613	0.0%

Licensed Tour Guides in 2014

No.	Languages	2010				2013				2014			
		Phnom Penh		Siem Reap		Phnom Penh		Siem Reap		Phnom Penh		Siem Reap	
		Total	Females	Total	Females	Total	Females	Total	Females	Total	Females	Total	Females
1	English	143	34	1,101	60	227	52	1273	72	251	56	1275	72
2	Japanese	46	13	659	147	60	17	757	163	67	20	767	165
3	French	54	20	192	31	94	32	246	45	98	33	250	46
4	Chinese	64	4	303	48	127	15	634	98	156	21	669	102
5	Korean	2	0	101	5	6	0	174	16	9	1	199	22
6	Thai	9	4	234	26	12	5	321	51	14	5	358	61
7	German	28	7	89	7	47	14	107	12	50	15	107	12
8	Spanish	13	1	103	6	22	3	112	8	23	3	112	8
9	Italian	1	0	22	1	11	2	25	1	13	2	25	1
10	Russian	6	1	39	4	22	4	70	8	23	4	77	9
11	Vietnam	5	1	16	2	47	10	100	13	55	12	111	15
12	English-Spanish					1		4		1		4	
13	French-Thai					1		1		1		1	
14	Malay					8		4		9		4	
	Total	371	85	2,859	337	675	154	3,819	487	770	172	3,959	513

Definitions of Tourism Statistics

- Statistics are the data obtained by collecting, processing, compiling, analyzing, publishing and disseminating results, gathered from respondents through statistical collections or from administrative data sources.
- Data are information in the form of numbers.
- Tourism statistics are the designated official statistics produced by the Ministry of Tourism.
- Tourism refers to the activities of individuals travelling to and staying in places outside their usual environment for a specified period and not exceeding one consecutive year for leisure, recreation, business, and any other legal tourism purposes.
- Tourist refers to any persons who are Cambodian or non-Cambodian nationals travelling to other places outside their usual environment, staying at least overnight and not exceeding a specified period for leisure, recreation, business, and other legal tourism purposes; and not relevant to the purpose of permanent residence or any remunerated activities.
- Domestic tourist refers to any persons who are Cambodian citizens travelling within Cambodia and staying at least overnight and not exceeding a specified period for leisure, recreation, business and other legal tourism activities.
- International tourist refers to any foreign visitors to Cambodia who stay at least overnight but not more than a specified period for leisure, recreation, business and other legal tourism purposes; and not relevant to the purpose of permanent residence or any remunerated activities.
- Internal international tourist refers to any persons who are not Cambodian nationals, but have legal temporary residence in Cambodia, travelling to and staying overnight for leisure, recreation, business and other legal tourism purposes in the Kingdom of Cambodia.
- Cambodia outbound tourist refers to any Cambodian nationals who travel overseas (Cambodian nationals living abroad are excluded), staying at least overnight for leisure, recreation, business or other legal tourism purposes.
- Same-day visitor (Excursionist) refers to any individuals who are Cambodian or non-Cambodian nationals travelling to other places outside their usual environment for leisure, recreation, business, and other legal tourism purposes, but do not stay overnight there.
- Tourism survey is a scientific statistical collection of data from domestic or international tourism which statistics unit selects as samples.
- Tourism manpower refers to any persons who have been working in the tourism sector.
- Tourism skilled labor refers to any persons who have professionalism in tourism and have been working in the tourism sector.

Unofficial translation



CAMBODIA

Kingdom of Wonder

Clean City, Clean Resort, Good Service, Best Hospitality



2015 WINNER
SIEM REAP, CAMBODIA

#1 DESTINATION IN ASIA #2 DESTINATION IN THE WORLD