



MINISTRY OF TOURISM

KINGDOM OF CAMBODIA



# ANNUAL REPORT ON TOURISM STATISTICS



Southeast Asia  
*feel the warmth*

**ANNUAL REPORT  
ON  
TOURISM STATISTICS 2015**



**STATISTICS & TOURISM INFORMATION DEPARTMENT  
MINISTRY OF TOURISM**

**KINDOM OF CAMBODIA**







**MINISTRY OF TOURISM**

Statistics and Tourism Information Department

No. 3A, Street 169, Sangkat Veal Vong, Khan 7 Makara, Phnom Penh, Cambodia.

Tel.: +855 23 884972 | Fax: +855 23 885003

Email: [info@mot.gov.kh](mailto:info@mot.gov.kh)

Website: [www.mot.gov.kh](http://www.mot.gov.kh)



## Message

Dear all readers,



On behalf of the Ministry of Tourism of Cambodia, I would like to pay my respect to all visitors, tourists, investors, relevant stakeholders who have come to the Kingdom of Cambodia and I am delighted to welcome all perspective tourists, visitors as well as investors who intend to come to our country in the future.

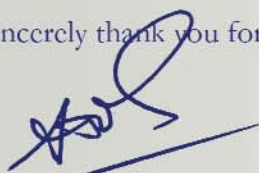
I am proudly pleased to inform that Cambodia's tourism sector has been benefiting a steady growth at a remarkable rate. In the year of 2015, there was an increase of 6.1% over last year with more than 4.78 million international tourists of which Siem Reap-Angkor has welcomed over 2.12 million tourists and Phnom Penh has also received 2.65 million tourists. Moreover, the number of domestic tourists recorded approximately 9.7 million, increased by 7.5% over the previous year.

Based on the increasing rate, we are optimistic that Cambodia will receive 7 million international tourists by 2020. However, In order to accomplish the above-pointed fast growing trend, the Royal Government of Cambodia has promoted the development of tourism sector as Cultural and Natural Tourism throughout ensuring the safety and security, social stability as well as emphasizing on development of infrastructure and land, air, waterways connectivity and opening opportunities to all foreign investors who aim to invest in tourism facility and infrastructure, which support Cambodia's tourism sector. Yet, this rapid increase of tourists is still hardly responded entirely to the soaring of the tourists to Cambodia, not to mention about Chinese tourists. In this regard, in order to accomplish the above-mentioned rapidly growing trend, Cambodia has further intensified the promotional campaign "**Cambodia Kingdom of Wonder**" where all world heritages are exclusively assembled, namely Angkor Wat and Preah Vihear Temple, and at the same time, has as well promoted the competitive movement of "**Clean City, Clean Resort, Good Service, Best Hospitality**", which is a potential tool for providing all visitors, tourists with unforgettable experiences and making Cambodia become a quality-clean and green tourism destination.

The Department of Statistics and Tourism Information has collected data and published annually of tourism statistical reports to provide pivotal and insightful information related to Cambodia's tourism industry. With commitments of our research team, we have generated the invaluable statistics in order to provide fundamental indicators, as well as supportive materials, documentary to benefit private sectors and all relevant stakeholders both local and global investors to invest in our country.

We strongly believe that this annually statistical report of 2015 will be a beneficially crucial instrument for academic purposes, document for researchers for the sake of private sectors and all relevant stakeholders as much as it may serve. Furthermore, it also acts as a key indicator for all investors aiming to invest in tourism sector in Cambodia.

I sincerely thank you for your interest and wish you all contentment.



**Dr. THONG Khon**  
Minister of Tourism



## **Disclaimer**

All rights are reserved. No part of this publication may be reproduced or transmitted in any form or by any means, electronic or mechanical, photocopying, recording, scanning or any form information storage and retrieval systems without prior permission in writing of authorised personnel from the Department of Statistics and Tourism Information of the Ministry of Tourism.

**Limit of liability/Disclaimed of Warranty:** While the publisher and author have used their best efforts in preparing this book, they make no representations or warranties with respect to the accuracy or completeness of the contents other this book and specifically disclaim any implied warranties of merchantability or fitness for a particular purpose. No warranty may be created or extended by sales representatives or written sales materials. The publisher is not engaged in rendering professional services, and you should consult with a professional where appropriate. Neither the publisher nor author shall be liable for any loss of profit or other commercial damages, including but not limit to special, incidental, consequential, or other damages.

This publication is intended to provide accurate information, data, statistics as well as materials derived from Information of the Ministry of Tourism was established by the Royal Government of Cambodia. With the commitments of our department, we have collected data of international visitor arrivals from various international border check points in Cambodia.

Particularly, it is nationally recognised that this Annual Statistical Report has been following the Definition of Tourism Statistics which is adopted and approved by Minister of Tourism. Statistical data used was accurate at the time of compilation and printing some changes due to revisions and/or changing collection and weighting techniques may have occurred since then.



## General Information



Official Name	Kingdom of Cambodia
Area	181,035 km <sup>2</sup>
National Independence Day	09 November, 1953
Population	15,635,242 (Projection 2015) Male: 48.6%; Female: 51.4%
Annual Population Growth Rate	1.54%
Cambodian Outbound Tourism	1,194,018 (2015)
Density	86
Language	Khmer
Religion	Buddhist 97%
Capital	1 (Phnom Penh)
Provinces	24
Cities	26
Khans	12
Districts	159
Communes	1,406
Sangkats	227
Village	14,184
Country Code	+855
Time	GMT +7 hours

## Khmer History

The Mon-Khmer race developed slowly during the first six centuries of the Christian era. Under Indian influence, a powerful maritime empire called “Funan” ruled over all the shores of the Gulf of Siam. Within a short time, this new power known as Chenla absorbed the Funanese Kingdom. In the late 7<sup>th</sup> century, Chenla broke into two parts: land Chenla (to the north) and water Chenla (to the south along the Gulf of Thailand). Land Chenla was fairly stable during the 8<sup>th</sup> century, whereas water Chenla was beset by dynastic rivalries.

At the beginning of the 9<sup>th</sup> century, the kings set up their capital in the present province of Siem Reap. For nearly six centuries, they erected two hundred temples as well as their sanctuaries in the Angkorian area of some 400 square kilometers in the Siem Reap Province.

King Suryavarman II (1113-1150) built the temples such as Angkor Wat, Thommanon, Chau Say Tevoda, Preah Palilay, Preah Pithu, and Banteay Samrè.

Jayavarman VII (1181-1220) was best known for his huge building program. Firstly, he built Ta Prohm (1186) and Preah Khan (1191) to dedicate to his parents. Secondly, he erected Banteay Kdei, Srah Srang, the Terrace of the Leper King, the Terrace of the Elephants, Neak Pean, Ta Som, Ta Nei, and some others in other parts of the country. Thirdly, he founded his great capital, Angkor Thom. Finally, in the center, he built the Bayon with its two hundred stone faces.

The decline of the Angkor era began after the death of King Jayavarman VII in the early 13<sup>th</sup> century. Due to the Siamese invasion and the limitation of the irrigation system, Khmer power declined so much that the king was finally obliged to move to the vicinity of Phnom Penh in 1431. Resulting from a series of Siamese and Cham invasions, the country was put as a French protectorate in 1863.

After regaining Independence in 1953, the country has had several names:

1. The Kingdom of Cambodia (under the Reachia Niyum Regime from 1953 to 1970);
2. The Khmer Republic (under the Lon Nol Regime from 1970 to 1975);
3. Democratic Kampuchea (under the Pol Pot Genocidal Regime from 1975 to 1979);
4. The People’s Republic of Kampuchea (1979-1989);
5. The State of Cambodia (1989-1993);
6. The Kingdom of Cambodia (1993 until now).



## Definitions of Tourism Statistics

- **Statistics** are the data obtained by collecting, processing, compiling, analyzing, publishing and disseminating results, gathered from respondents through statistical collections or from administrative data sources.
- **Data** are information in the form of numbers.
- **Tourism statistics** are the designated official statistics produced by the Ministry of Tourism.
- **Tourism** refers to the activities of individuals travelling to and staying in places outside their usual environment for a specified period and not exceeding one consecutive year for leisure, recreation, business, and any other legal tourism purposes.
- **Tourist** refers to any persons who are Cambodian or non-Cambodian nationals travelling to other places outside their usual environment, staying at least overnight and not exceeding a specified period for leisure, recreation, business, and other legal tourism purposes; and not relevant to the purpose of permanent residence or any remunerated activities.
- **Domestic tourist** refers to any persons who are Cambodian citizens travelling within Cambodia and staying at least overnight and not exceeding a specified period for leisure, recreation, business and other legal tourism activities.
- **International tourist** refers to any foreign visitors to Cambodia who stay at least overnight but not more than a specified period for leisure, recreation, business and other legal tourism purposes; and not relevant to the purpose of permanent residence or any remunerated activities.
- **Internal international tourist** refers to any persons who are not Cambodian nationals, but have legal temporary residence in Cambodia, travelling to and staying overnight for leisure, recreation, business and other legal tourism purposes in the Kingdom of Cambodia.
- **Cambodia outbound tourist** refers to any Cambodian nationals who travel overseas (Cambodian nationals living abroad are excluded), staying at least overnight for leisure, recreation, business or other legal tourism purposes.
- **Same-day visitor** (Excursionist) refers to any individuals who are Cambodian or non-Cambodian nationals travelling to other places outside their usual environment for leisure, recreation, business, and other legal tourism purposes, but do not stay overnight there.
- **Tourism survey** is a scientific statistical collection of data from domestic or international tourism which statistics unit selects as samples.
- **Tourism manpower** refers to any persons who have been working in the tourism sector.
- **Tourism skilled labor** refers to any persons who have professionalism in tourism and have been working in the tourism sector.

Adopted by Ministry of Tourism 2011

## CONTENTS

Minister Message	
Disclaimer	
General Information	
Definitions of Tourism Statistics	
Tourism Highlight 1993 – 2015	
Quick Overview of Key Trends in 2015	
Map of International Border Check-Point	

### Unit I – Inbound and Outbound Tourism Statistics

International Tourist Arrivals to Cambodia by Months in 2010 – 2015 .....	1
International Tourist Arrivals to Cambodia by Country of Residence in 2015 .....	2 – 3
<i>(by all means of transport)</i>	
International Tourist Arrivals to Cambodia by Purposes of Visit in 2015 .....	4 – 5
<i>(by all means of transport)</i>	
International Tourist Arrivals to Cambodia by Regions in 2015 .....	6
<i>(by all means of transport)</i>	
International Tourist Arrivals to Cambodia by Mode of Arrivals in 2014 – 2015 .....	7
International Tourist Arrivals to Cambodia by Mode of Arrivals in 2011 – 2015 <i>(by all means of transport)</i> .....	7
Top ten Generating Markets 2009 – 2015 .....	8
International Tourist Arrivals to Cambodia by International Border Check Points in 2015 .....	9 – 10
Cambodian Outbound Tourism by Int'l Border Check-points in 2008 – 2015 .....	11
International Outbound Tourist Departures by Int'l Border Check Points in 2009 – 2015.....	12
Major Data in 1993 – 2015 .....	13
Profile of International Tourist Arrivals to Cambodia in 2015 (Inbound Tourism Survey 2015) .....	14

#### Section I: Phnom Penh International Airport (PNH)

International Tourist Arrivals to Phnom Penh International Airport by Months in 2009 – 2015 .....	15
International Tourist Arrivals to Phnom Penh International Airport by Country of Residence in 2015 .....	16 – 17
Top Ten Generating Markets in 2015, Tourist Arrivals by Rank .....	17
International Tourist Arrivals to Phnom Penh International Airport by Regions in 2015 .....	18
International Tourist Arrivals to Phnom Penh International Airport by Purposes of Visit in 2009 – 2015....	19
Int'l Tourist Departures from Phnom Penh International Airport by Months in 2009 – 2015 .....	20

#### Section II: Siem Reap International Airport (REP)

International Tourist Arrivals to Siem Reap International Airport by Months in 2009 – 2015 .....	21
<i>(by air only)</i>	
International Tourist Arrivals to Siem Reap International Airport by Country of Residence in 2015.....	22 – 23
Top Ten Generating Markets in 2015, Tourist Arrivals by Rank <i>(by air only)</i> .....	23
International Tourist arrivals to Siem Reap International Airport by Regions in 2015 .....	24
International Tourist Arrivals to Siem Reap International Airport by Purposes of Visit in 2009 – 2015 .....	25
International Tourist Arrivals to Siem Reap Angkor by Months in 2009 – 2015 .....	26
<i>(by all means of transport)</i>	
International Tourist Arrivals to Siem Reap Angkor by Mode of Transport in 2013 – 2015.....	26
Top Ten Generating Markets in 2015, Int'l Tourist Arrivals <i>(by all means of transport)</i> .....	26



**Section III: International Border Check-points**

International Tourist Arrivals to Cambodia by Land and Waterways in 2009 – 2015 .....27  
 Int'l Tourist Arrivals to Cambodia by Land and Waterways by Country of Residence in 2015.....28 – 29  
 Top Ten Generating Markets in 2015, Tourist Arrivals by Rank .....29  
 International Tourist Arrivals to Cambodia by Land and Waterways by Regions in 2015 .....30  
 International Tourist Arrivals to Cambodia by Land and Waterways by Purposes of Visit in 2008 – 2015.....30

**Unit II – Domestic Tourism Statistics**

Cambodian Visitor Arrivals to Provinces in 2011 – 2015 .....31  
 Foreigner Visitor Arrivals to Other Destinations in 2011 – 2015 .....31

**Unit III – Tourism Supply**

**Tourism Supply: Accommodations**

Number of Hotels and Guesthouses in 1997 – 2015 .....32  
 Tourism Service Statistics in 2015 .....32

**Tourism Supply: Tourism services**

Number of Travel Agencies and Tour Operators in 1996 – 2015 .....33  
 Licensed Tour Guides in 2015 .....33  
 Airlines .....34  
 Published by.....35

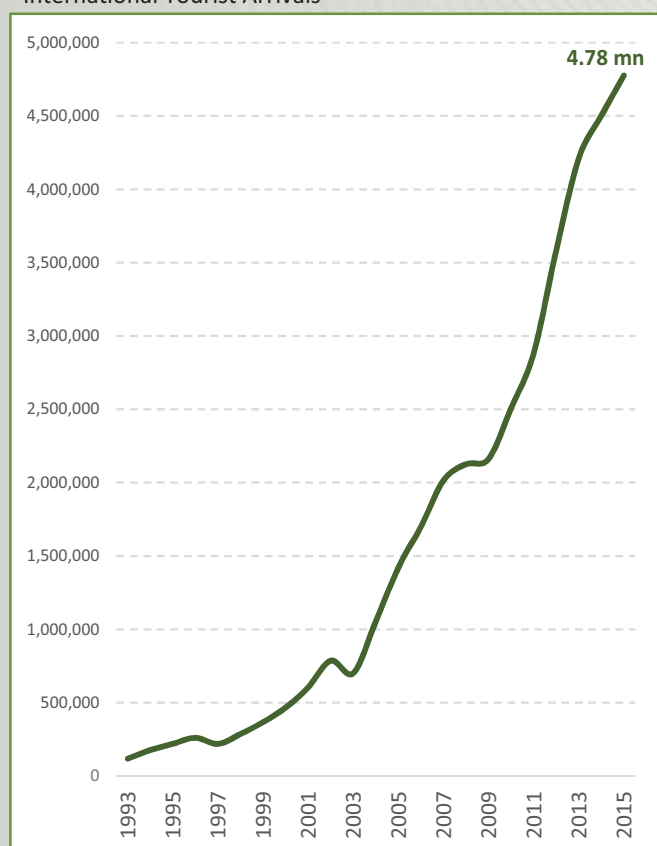


## Tourism Highlights

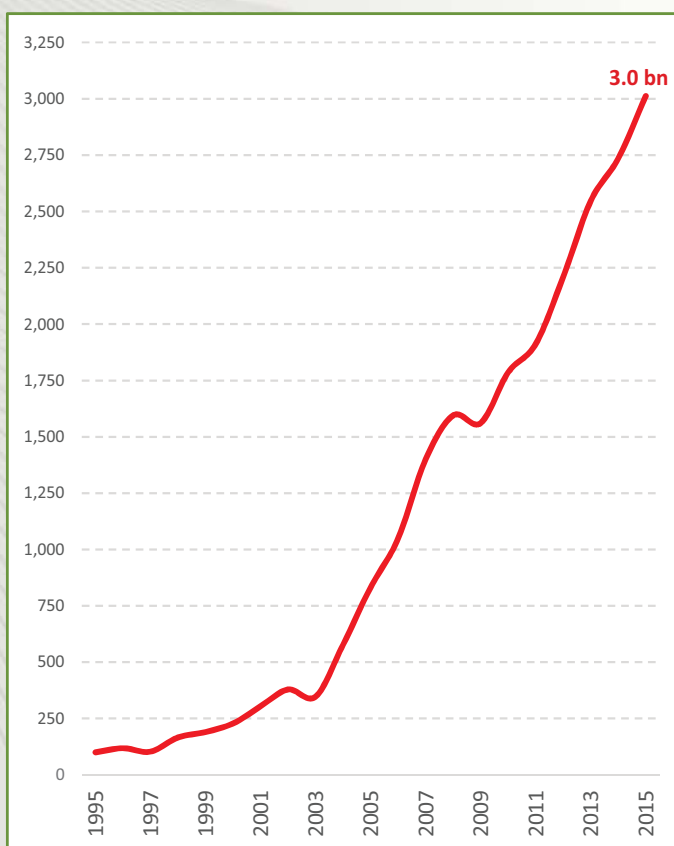
### International Tourist Arrivals, Average Length of Stays, Hotel Occupancy & Tourism Receipts 1993 - 2015

Years	Int'l Tourist Arrivals		Average Length	Hotel Occupancy	Tourism Receipts
	Number	Change (%)	of Stays (Days)	(%)	(Million US\$)
1993	118,183	-	N/A	N/A	N/A
1994	176,617	49.4	N/A	N/A	N/A
1995	219,680	24.4	8.00	37.0	100
1996	260,489	18.6	7.50	40.0	118
1997	218,843	-16.0	6.40	30.0	103
1998	286,524	30.9	5.20	40.0	166
1999	367,743	28.3	5.50	44.0	190
2000	466,365	26.8	5.50	45.0	228
2001	604,919	29.7	5.50	48.0	304
2002	786,524	30.0	5.80	50.0	379
2003	701,014	-10.9	5.50	50.0	347
2004	1,055,202	50.5	6.30	52.0	578
2005	1,421,615	34.7	6.30	52.0	832
2006	1,700,041	19.6	6.50	54.8	1,049
2007	2,015,128	18.5	6.50	54.8	1,400
2008	2,125,465	5.5	6.65	62.7	1,595
2009	2,161,577	1.7	6.45	63.6	1,561
2010	2,508,289	16.0	6.45	65.7	1,786
2011	2,881,862	14.9	6.50	66.2	1,912
2012	3,584,307	24.4	6.30	68.5	2,210
2013	4,210,165	17.5	6.75	69.5	2,547
2014	4,502,775	7.0	6.50	67.6	2,736
2015	4,775,231	6.1	6.80	70.2	3,012

Cambodia: Inbound Tourism  
International Tourist Arrivals



Cambodia: Tourism Receipts





## Quick Overview of Key Trends

### The Results of International Tourism 2015

- In Cambodia, there is a total of twenty two international border check points which consist of two international airports, sixteen land international border check points, and three international ports which have been collected monthly reports of international tourist arrivals to Cambodia.
- In 2015, Cambodia welcomed 4,775,231 (4.78 Million) international tourists grew by 6.1% compared to 2014.
- Asia and the Pacific increased by 6.3% lower than 2014 by 8.3 %. In this extent, ASEAN is seen slightly increased by 5.3% lower than 2014 by 8.8%. Europe decreased its capacity in attracting tourists in the first quarter, but increased in the second quarter which is seen to increase by 1.0% in 2015 and by 1.5% in 2014. Americas had a healthy growth by 14% higher than 2014 by 5.1%. Africa contributed to tourism's market by 0.2%. However, this is seen to increase, a remarkable increase, by 48.7% in which 2014 consisted of only 5.3%. The Middle East grew by 18.1% higher than 2014 increasing by 12.4%.

### Mode of Arrivals

- Air way received 2,476,001 international tourists equivalent to 51.9% increasing by 8.9% which maintained its growth well. On the one hand, Phnom Penh Airport attained 1,061,034 tourists equal 22.2% increased by 15.6%. By another hand, Siem Reap Airport gained 1,414,967 tourists which is equal to 29.6% grew by 4.4%.
- Land way obtained 2,151,138 tourists equivalent to 45.0% increasing by 0.9%. However, Cambodia-Thailand land way decreased by 11.9%. At the same time, Poi Pet's border checkpoint decreasing by 1.0% whereas Cambodia-Vietnam land way increased by 17.6%, which Bavet border checkpoint grew remarkably by 19.1%.
- Waterways received 148,092 tourists equal 3.1% increasing by 52.8% which is seen as a high growth. In this point, there are 33 international cruise ships which entered Sihanoukville's sea port, which held international tourists 43,598 grew by 100.6%.

### Top Arrivals

- Vietnamese tourists consisted of 987,792 which is equivalent to 20.7%. In 2015, the growing rate was seen to be well-grown in January by 50.4%. Besides, in August the number of tourists dropped by 5.1% and in September was also known to decrease by 3.7%. Additionally, 96% of Vietnamese tourists were seen to travel into Cambodia via land way.
- Chinese tourists consisted of 694,712 which is equivalent to 14.5% increasing by 24.0%. China is deemed to be the potential source of tourism market of Cambodia which is always seen to demonstrate the growing rate by more than 20%. In this rate, 90% of Chinese tourists, who come into Cambodia, are mainly by air.
- Laos's tourists consisted of 405,359 equal to 8.5% decreased by 11.9%. In this rate, Laos's tourists are surprisingly seen to decrease by the first time, which have been considered to increase so far. Approximately, 98% of Laos' tourists came into Cambodia mainly by Land way.
- Korean tourists consisted of 395,259 accounted for 8.3% decreased in 2015 and 2014 by 6.9% and 4.4%, respectively. In this rate, 87% of Korean tourists arrived Cambodia exclusively by air.
- Thai tourists amounted 349,908 equal to 7.3% grew by 25.2%. The total of 78% of Thai tourists came into Cambodia is by land way.
- American tourists amounted 217,510 which is equivalent to 4.6% increased by 13.7%. In this rate, 72% of American tourists arrived Cambodia by air.
- Japanese tourists consisted of 193,330 accounted for 4.0% dropped by 10.4%. Japanese tourists have been seen to drop once again in the last five years since 2009 due to the world crisis which made Japanese tourists decreased by 10.7%. The total of 88% of Japanese tourists came to Cambodia is exclusively by air.
- English tourists amounted 154,265 equal to 3.2% grew by 15.7%. In this rate, 54% of English tourists arrived Cambodia is mainly by air.
- Malaysian tourists consisted of 149,265 which is equivalent to 3.2% increased by 15.7%. The total of 54% of Malaysian tourists arrived Cambodia is mainly by air.
- French tourists amounted 145,724 equal to 3.1% grew by 3.3%. In this increasing rate, 68% of French tourists arrived Cambodia is mainly by air.
- Australian tourists consisted of 134,748 equal to 2.8% increased by 0.4%.

- Taiwanese tourists amounted 109,727 which is equivalent to 2.3% increasing by 12.5%
- Among Cambodia's 10 tourism markets, the highest increasing rate belongs to China, Thailand, English, USA, Vietnam, Malaysia, and France, which have been witnessed to possess a positive increasing rate in between 3% and 24%, yet Laos, Japan and Korea decreased from 7% to 12%.
- Russian tourists decreased sharply by 48.9% and were ranked 17.

### Outbound Tourism

- Cambodian outbound tourists amounted 1,194,018 (1.2 Million) grew by 24.9%.

### Tourism Receipts

- Based on the primary data of results of Inbound Tourism Survey 2015, Cambodia tourism sector had been reported to earn approximately USD 3,012 million grew by USD 276 million, or 10.1% compared to 2014 and at the meantime, contributed to GDP (Gross Domestic Products) by 13.0%.

### Purposes of Visit

- The pivotal purposes of tourists are composed of holiday and leisure, first target, which included recreation, sports, health treatment and Religion or pilgrimages equivalent 59.4%. Second target is on business purposes which is equal to 10.9%. Visiting friends and relatives (VFR) is the third target that accounted for 4.0%. The fourth target of visiting, Official Mission, accounted for 12.9%. Last of all, MICE (Meeting Incentive Convention Exhibition) which is equal to 2.0%. Not to mention other activities, this accounted for 10.8%.

### Visitor Profile

- Cambodia surrounded by 4.78 million international tourists in 2015, female accounted for 41.9% of total international arrivals. Noticeably, 75.5% of tourist arrivals to Cambodia as their first visit, and 24.5% of travelers recorded as revisited tourists. Among international tourist arrivals to Cambodia, it is seen that the group age of 15-24 years old of tourists has taken the first place, which accounted for an average of 34.7% of total tourist arrivals and followed by the group age of 45-54 years old amounted for 22.8%. Moreover, tourists' occupational categories were characterized of 25.6% of tourists as employees, 20.8% professional, 5.1% government officials, 9.9% businesspersons, 24.7% students, 5.0% retired persons, and 8.9% other occupations. Besides, the travel arrangement covered 23.2% as free independent travelers (FIT) and 76.8% as group inclusive travelers (GIT) among all the international tourist arrivals. In order to welcome tourists, Cambodia welcomes tourists with different types of accommodations. The first one is Hotel which is accounted for 69.5%. The second type is Guesthouse which is accounted for 25.6%. And, the other accommodations accounted for 4.9%.

### Entry Points

- Cambodia has welcomed international tourists via three vital entry points. The first important entry point is Thailand which is comprised of 40.9% of all tourist arrivals. The second pivotal entry point is Vietnam which is accounted for 39.6%. The last important entry point is Laos PDR is equal to 2.1% of all tourists arrived Kingdom of Cambodia. Nevertheless, other entry points are seen to serve the tourists by air which are accounted for 17.4%

### Internal Tourism

- Domestic tourists (KHM): Cambodia's citizens who travelled in the country amounted 9,678,992 (9.68 Million) were witnessed to increase by 7.5 % (in 2014 amounted 9.0 Million). Tourists are seen to keep increasing remarkably from year to year as a result of Ministry of Tourism, who has promoted as well as celebrated special events such as Sea Festival, River Festival, which are potential tools in attracting more tourists from others provinces in Cambodia to visit and tour into those tourism areas such as Coastal Zone, Eco-tourism areas. These activities are seen to increase tourists' population into provinces rather than Phnom Penh.
- Foreigner Visitors (INT): Foreigners who travelled within Cambodia consisted of approximately 5,799,427 (5.8 Million) grew by 3.3%.





# CAMBODIA INTERNATIONAL BORDER CHECK POINTS



Not to scale

## Legend

- Provincial / City
- International Airport
- Domestic Airport
- Port
- Check Point
- International Boundary
- Provincial Boundary
- District Center



# UNIT I

## INBOUND AND OUTBOUND TOURISM



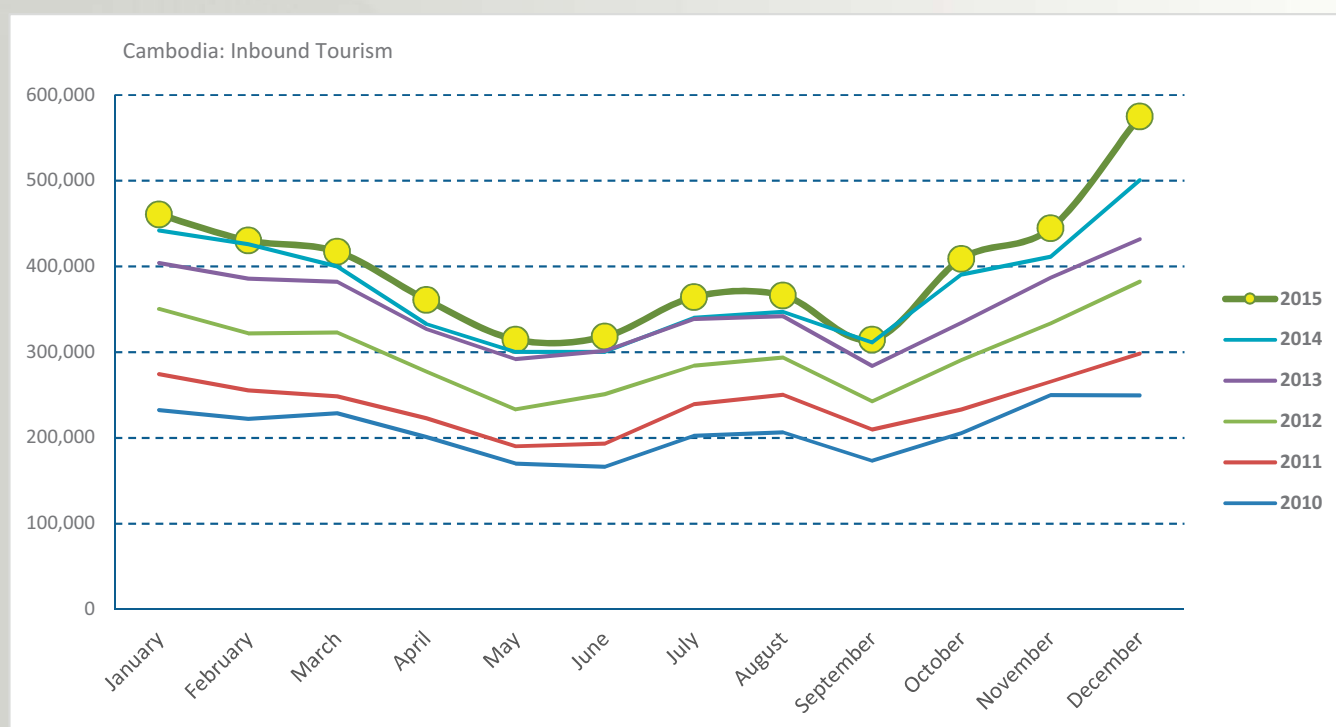




Photo by: Suong Mardy

## International Tourist Arrivals to Cambodia by Months in 2010 - 2015

Months	2010	2011	2012	2013	2014	2015	Change (%)				
							11/10	12/11	13/12	14/13	2015*14
<b>Q1</b>	<b>683,692</b>	<b>778,467</b>	<b>995,210</b>	<b>1,172,072</b>	<b>1,267,922</b>	<b>1,307,836</b>	<b>13.9</b>	<b>27.8</b>	<b>17.8</b>	<b>8.2</b>	<b>3.1</b>
January	232,590	274,471	350,257	404,106	442,045	460,577	18.0	27.6	15.4	9.4	4.2
February	222,354	255,499	321,870	385,760	425,801	430,207	14.9	26.0	19.8	10.4	1.0
March	228,748	248,497	323,083	382,206	400,076	417,052	8.6	30.0	18.3	4.7	4.2
<b>Q2</b>	<b>537,464</b>	<b>606,562</b>	<b>761,442</b>	<b>920,527</b>	<b>933,446</b>	<b>994,154</b>	<b>12.9</b>	<b>25.5</b>	<b>20.9</b>	<b>1.4</b>	<b>6.5</b>
April	200,965	223,032	277,304	327,000	332,690	361,139	11.0	24.3	17.9	1.7	8.6
May	170,164	190,258	233,220	292,115	300,302	314,748	11.8	22.6	25.3	2.8	4.8
June	166,335	193,272	250,918	301,412	300,454	318,267	16.2	29.8	20.1	-0.3	5.9
<b>Q3</b>	<b>582,024</b>	<b>699,760</b>	<b>820,888</b>	<b>964,612</b>	<b>998,690</b>	<b>1,044,880</b>	<b>20.2</b>	<b>17.3</b>	<b>17.5</b>	<b>3.5</b>	<b>4.6</b>
July	202,349	239,527	284,282	338,761	340,091	364,325	18.4	18.7	19.2	0.4	7.1
August	206,563	250,429	293,859	342,064	347,211	366,096	21.2	17.3	16.4	1.5	5.4
September	173,112	209,804	242,747	283,787	311,388	314,459	21.2	15.7	16.9	9.7	1.0
<b>Q4</b>	<b>705,109</b>	<b>797,073</b>	<b>1,006,767</b>	<b>1,152,954</b>	<b>1,302,717</b>	<b>1,428,361</b>	<b>13.0</b>	<b>26.3</b>	<b>14.5</b>	<b>13.0</b>	<b>9.6</b>
October	205,515	233,190	290,959	334,410	390,637	408,922	13.5	24.8	14.9	16.8	4.7
November	249,892	265,539	333,482	386,737	411,501	444,640	6.3	25.6	16.0	6.4	8.1
December	249,702	298,344	382,326	431,807	500,579	574,799	19.5	28.1	12.9	15.9	14.8
<b>Total</b>	<b>2,508,289</b>	<b>2,881,862</b>	<b>3,584,307</b>	<b>4,210,165</b>	<b>4,502,775</b>	<b>4,775,231</b>	<b>14.9</b>	<b>24.4</b>	<b>17.5</b>	<b>7.0</b>	<b>6.1</b>







## International Tourist Arrivals to Cambodia by Country of Residence in 2015

(by all means of transportation)

Regions Country of Residence	2015												Total	Share (%) 2015*
	Jan	Feb	Mar	Apr	May	Jun	Jul	Aug	Sep	Oct	Nov	Dec		
<b>Grand Total</b>	<b>460,577</b>	<b>430,207</b>	<b>417,052</b>	<b>361,139</b>	<b>314,748</b>	<b>318,267</b>	<b>364,325</b>	<b>366,096</b>	<b>314,459</b>	<b>408,922</b>	<b>444,640</b>	<b>574,799</b>	<b>4,775,231</b>	<b>100.0</b>
<b>Americas</b>	<b>36,706</b>	<b>33,908</b>	<b>31,147</b>	<b>24,009</b>	<b>21,011</b>	<b>20,653</b>	<b>23,863</b>	<b>17,925</b>	<b>14,898</b>	<b>23,552</b>	<b>32,054</b>	<b>35,800</b>	<b>315,526</b>	<b>6.6</b>
<b>North America</b>	<b>32,276</b>	<b>29,815</b>	<b>27,890</b>	<b>21,297</b>	<b>18,506</b>	<b>18,938</b>	<b>21,580</b>	<b>16,298</b>	<b>13,356</b>	<b>20,766</b>	<b>28,812</b>	<b>31,938</b>	<b>281,472</b>	<b>5.9</b>
Canada	7,330	7,430	6,467	4,329	3,723	3,003	3,592	2,615	2,087	3,993	6,170	6,095	56,834	1.2
Mexico	481	409	564	590	551	527	996	380	527	596	652	855	7,128	0.1
United States	24,465	21,976	20,859	16,378	14,232	15,408	16,992	13,303	10,742	16,177	21,990	24,988	217,510	4.6
<b>Central America</b>	<b>96</b>	<b>73</b>	<b>51</b>	<b>45</b>	<b>41</b>	<b>38</b>	<b>60</b>	<b>46</b>	<b>42</b>	<b>99</b>	<b>41</b>	<b>88</b>	<b>720</b>	<b>0.0</b>
Costa Rica	79	52	22	31	21	30	38	28	26	39	28	71	465	0.0
Honduras	9	9	22	6	11	4	7	6	7	22	3	6	112	0.0
Jamaica	8	12	7	8	9	4	15	12	9	38	10	11	143	0.0
<b>South America</b>	<b>4,140</b>	<b>3,895</b>	<b>2,930</b>	<b>2,437</b>	<b>2,329</b>	<b>1,305</b>	<b>2,062</b>	<b>1,327</b>	<b>1,215</b>	<b>2,129</b>	<b>2,832</b>	<b>3,105</b>	<b>29,706</b>	<b>0.6</b>
Argentina	1,141	1,013	1,225	792	477	217	346	337	270	456	795	801	7,870	0.2
Brazil	1,823	1,447	897	769	574	486	670	329	356	758	1,152	1,357	10,618	0.2
Chile	590	934	416	438	395	217	307	277	264	379	354	397	4,968	0.1
Colombia	308	237	198	207	307	230	285	178	173	247	262	271	2,903	0.1
Ecuador	82	77	47	46	30	40	31	37	26	37	48	59	560	0.0
Peru	86	103	54	55	83	51	85	86	53	159	133	112	1,060	0.0
Uruguay	81	49	64	88	433	30	22	38	32	69	52	46	1,004	0.0
Venezuela	29	35	29	42	30	34	316	45	41	24	36	62	723	0.0
Other America	194	125	276	230	135	372	161	254	285	558	369	669	3,628	0.1
<b>Africa</b>	<b>780</b>	<b>757</b>	<b>744</b>	<b>696</b>	<b>578</b>	<b>673</b>	<b>715</b>	<b>713</b>	<b>597</b>	<b>711</b>	<b>673</b>	<b>1,601</b>	<b>9,238</b>	<b>0.2</b>
<b>North Africa</b>	<b>73</b>	<b>104</b>	<b>52</b>	<b>49</b>	<b>80</b>	<b>48</b>	<b>54</b>	<b>102</b>	<b>60</b>	<b>55</b>	<b>66</b>	<b>100</b>	<b>843</b>	<b>0.0</b>
Morocco	46	55	37	34	42	25	36	67	38	27	41	57	505	0.0
Sudan	9	23	3	5	18	15	10	16	8	7	9	8	131	0.0
Tunisia	18	26	12	10	20	8	8	19	14	21	16	35	207	0.0
<b>Subsaharan Africa</b>	<b>654</b>	<b>619</b>	<b>648</b>	<b>589</b>	<b>462</b>	<b>553</b>	<b>625</b>	<b>548</b>	<b>478</b>	<b>552</b>	<b>531</b>	<b>1,283</b>	<b>7,542</b>	<b>0.2</b>
Cameroon	17	13	25	23	14	9	46	11	6	12	9	17	202	0.0
Congo	3	6	8	7	5	10	15	9	13	11	9	11	107	0.0
Ghana	5	9	8	4	6	9	10	8	7	14	6	7	93	0.0
Kenya	13	25	56	20	20	25	25	23	19	22	34	62	344	0.0
Liberia	4	1	2	3	9	4	10	10	3	2	4	3	55	0.0
Nigeria	106	79	85	83	102	88	72	98	89	90	96	81	1,069	0.0
South Africa	488	468	445	422	275	378	416	364	299	371	353	1,057	5,336	0.1
Tanzania	5	3	8	8	5	9	6	10	13	8	5	13	93	0.0
Uganda	2	6	4	6	13	14	19	6	21	13	5	12	121	0.0
Zimbabwe	11	9	7	13	13	7	6	9	8	9	10	20	122	0.0
Other Africa	53	34	44	58	36	72	36	63	59	104	76	218	853	0.0
<b>Middle East</b>	<b>1,776</b>	<b>1,727</b>	<b>1,287</b>	<b>948</b>	<b>769</b>	<b>625</b>	<b>1,022</b>	<b>986</b>	<b>1,153</b>	<b>1,089</b>	<b>1,329</b>	<b>1,934</b>	<b>14,645</b>	<b>0.3</b>
Egypt	77	52	28	62	41	33	42	37	76	37	36	66	587	0.0
Iran	61	40	87	18	19	22	63	23	36	29	36	91	525	0.0
Iraq	9	5	10	14	9	12	16	10	20	20	20	24	169	0.0
Israel	1,314	1,388	976	633	419	298	430	493	722	687	947	1,250	9,557	0.2
Jordan	24	26	42	24	30	39	22	32	28	30	18	25	340	0.0
Kuwait	133	68	38	47	109	52	103	189	53	52	37	35	916	0.0
Oman	20	33	25	14	15	12	16	25	10	7	17	20	214	0.0
Palestine	6	1	5	7	8	7	5	9	7	6	13	10	84	0.0
Qatar	28	16	13	6	6	5	8	5	7	8	5	10	117	0.0
Saudi Arabia	32	40	17	42	25	20	28	37	12	13	21	20	307	0.0
Syria	18	10	8	20	26	23	20	16	58	23	12	26	260	0.0
United Arab Emirates	6	7	9	8	15	7	204	45	15	23	16	12	367	0.0
Yemen	13	17	2	14	25	30	19	26	62	60	81	103	452	0.0
Other Middle East	35	24	27	39	22	65	46	39	47	94	70	242	750	0.0



## International Tourist Arrivals to Cambodia by Purposes of Visit in 2015

(by all means of transportation)

Regions Country of Residence	2014		2015				Share	Change	
			Purposes of Visit			Total	Female	(%)	(%)
			Holiday	Business	Others			2015*	2015*/14
<b>Grand Total</b>	<b>4,502,775</b>	<b>4,299,373</b>	<b>299,607</b>	<b>176,251</b>	<b>4,775,231</b>	<b>1,999,006</b>	<b>100.0</b>	<b>6.1</b>	
<b>Asia and the Pacific</b>	<b>3,495,481</b>	<b>3,320,271</b>	<b>256,802</b>	<b>139,615</b>	<b>3,716,688</b>	<b>1,532,043</b>	<b>77.8</b>	<b>6.3</b>	
<b>ASEAN (Southeast Asia)</b>	<b>1,991,897</b>	<b>1,887,646</b>	<b>97,390</b>	<b>112,722</b>	<b>2,097,758</b>	<b>849,133</b>	<b>43.9</b>	<b>5.3</b>	
Brunei Darussalam	990	711	25	116	852	350	0.0	-13.9	
Indonesia	35,655	27,787	12,853	2,507	43,147	11,946	0.9	21.0	
Lao PDR	460,191	396,954	154	8,251	405,359	166,888	8.5	-11.9	
Malaysia	144,437	139,549	8,820	1,020	149,389	47,971	3.1	3.4	
Myanmar	6,036	7,840	547	578	8,965	3,793	0.2	48.5	
Philippines	93,475	71,732	10,443	2,502	84,677	46,992	1.8	-9.4	
Singapore	65,855	64,234	2,847	588	67,669	22,696	1.4	2.8	
Thailand	279,457	315,960	16,972	16,976	349,908	138,411	7.3	25.2	
Vietnam	905,801	862,879	44,729	80,184	987,792	410,086	20.7	9.1	
<b>Northeast Asia</b>	<b>1,308,281</b>	<b>1,246,192</b>	<b>147,054</b>	<b>15,419</b>	<b>1,408,665</b>	<b>598,084</b>	<b>29.5</b>	<b>7.7</b>	
China	560,335	596,737	91,135	6,840	694,712	309,726	14.5	24.0	
Hong Kong (China)	9,847	14,537	198	52	14,787	6,952	0.3	50.2	
Japan	215,788	167,355	22,174	3,801	193,330	74,722	4.0	-10.4	
Korea (ROK)	424,424	374,497	16,768	3,994	395,259	162,969	8.3	-6.9	
Macau (China)		361	11	20	392	156	0.0		
Mongolia	359	391	33	34	458	250	0.0	27.6	
Taiwan (China)	97,528	92,314	16,735	678	109,727	43,309	2.3	12.5	
<b>Southern Asia</b>	<b>35,730</b>	<b>36,778</b>	<b>4,846</b>	<b>3,266</b>	<b>44,890</b>	<b>12,237</b>	<b>0.9</b>	<b>25.6</b>	
Afghanistan	214	75	9	37	121	30	0.0	-43.5	
Bangladesh	1,997	1,484	357	216	2,057	315	0.0	3.0	
Bhutan	110	163	9	57	229	88	0.0	108.2	
India	28,529	31,246	3,136	2,289	36,671	10,516	0.8	28.5	
Nepal	1,742	1,676	327	355	2,358	600	0.0	35.4	
Pakistan	1,325	968	401	152	1,521	270	0.0	14.8	
Sri Lanka	1,813	1,166	607	160	1,933	418	0.0	6.6	
<b>Oceania</b>	<b>155,578</b>	<b>144,326</b>	<b>6,975</b>	<b>6,659</b>	<b>157,960</b>	<b>69,583</b>	<b>3.3</b>	<b>1.5</b>	
Australia	134,167	123,390	5,889	5,469	134,748	59,341	2.8	0.4	
Fiji	152	124	44	23	191	62	0.0	25.7	
New Zealand	21,259	20,812	1,042	1,167	23,021	10,180	0.5	8.3	
Other Asia & the Pacific	3,995	5,329	537	1,549	7,415	3,006	0.2	85.6	
<b>Europe</b>	<b>712,009</b>	<b>672,703</b>	<b>28,883</b>	<b>17,548</b>	<b>719,134</b>	<b>314,534</b>	<b>15.1</b>	<b>1.0</b>	
<b>Northern Europe</b>	<b>189,626</b>	<b>198,045</b>	<b>10,712</b>	<b>2,900</b>	<b>211,657</b>	<b>88,285</b>	<b>4.4</b>	<b>11.6</b>	
Denmark	11,766	10,933	379	241	11,553	4,811	0.2	-1.8	
Finland	7,232	6,785	306	155	7,246	2,806	0.2	0.2	
Iceland	832	682	15	30	727	270	0.0	-12.6	
Ireland	9,542	10,676	390	134	11,200	4,970	0.2	17.4	
Norway	9,813	9,146	239	136	9,521	4,145	0.2	-3.0	
Sweden	17,135	16,277	567	301	17,145	6,982	0.4	0.1	
United Kingdom	133,306	143,546	8,816	1,903	154,265	64,301	3.2	15.7	
<b>Western Europe</b>	<b>297,319</b>	<b>296,783</b>	<b>12,700</b>	<b>9,586</b>	<b>319,069</b>	<b>138,202</b>	<b>6.7</b>	<b>7.3</b>	
Austria	8,842	9,673	256	151	10,080	4,262	0.2	14.0	
Belgium	15,891	16,291	673	488	17,452	7,259	0.4	9.8	
France	141,052	132,032	7,437	6,255	145,724	64,147	3.1	3.3	
Germany	84,143	90,117	2,286	1,637	94,040	40,261	2.0	11.8	
Luxembourg	521	654	12	24	690	289	0.0	32.4	
Monaco	110	64	8	17	89	30	0.0	-19.1	
Netherlands	26,553	27,164	1,284	567	29,015	12,497	0.6	9.3	
Switzerland	20,207	20,788	744	447	21,979	9,457	0.5	8.8	
<b>Central / Eastern Europe</b>	<b>148,428</b>	<b>93,878</b>	<b>2,780</b>	<b>2,441</b>	<b>99,099</b>	<b>49,320</b>	<b>2.1</b>	<b>-33.2</b>	
Bulgaria	1,151	1,570	35	166	1,771	797	0.0	53.9	
Czech Republic	5,402	5,419	80	104	5,603	2,377	0.1	3.7	
Estonia	1,855	1,879	43	30	1,952	875	0.0	5.2	
Hungary	3,476	3,916	127	147	4,190	1,812	0.1	20.5	
Kazakhstan	2,702	1,929	264	42	2,235	1,148	0.0	-17.3	
Kyrgyzstan		121	21	19	161	68	0.0		
Latvia		1,007	26	48	1,081	497	0.0		
Lithuania	1,629	1,783	28	50	1,861	906	0.0	14.2	
Poland	12,876	13,592	145	271	14,008	6,840	0.3	8.8	
Romania	1,994	2,047	74	293	2,414	1,145	0.1	21.1	
Russian Federation	108,601	53,161	1,596	743	55,500	28,850	1.2	-48.9	
Slovakia	2,387	2,132	55	79	2,266	957	0.0	-5.1	
Ukraine	5,753	4,692	214	416	5,322	2,588	0.1	-7.5	
Uzbekistan	602	630	72	33	735	460	0.0	22.1	

**International Tourist Arrivals to Cambodia by Purposes of Visit in 2015**
*(by all means of transportation)*

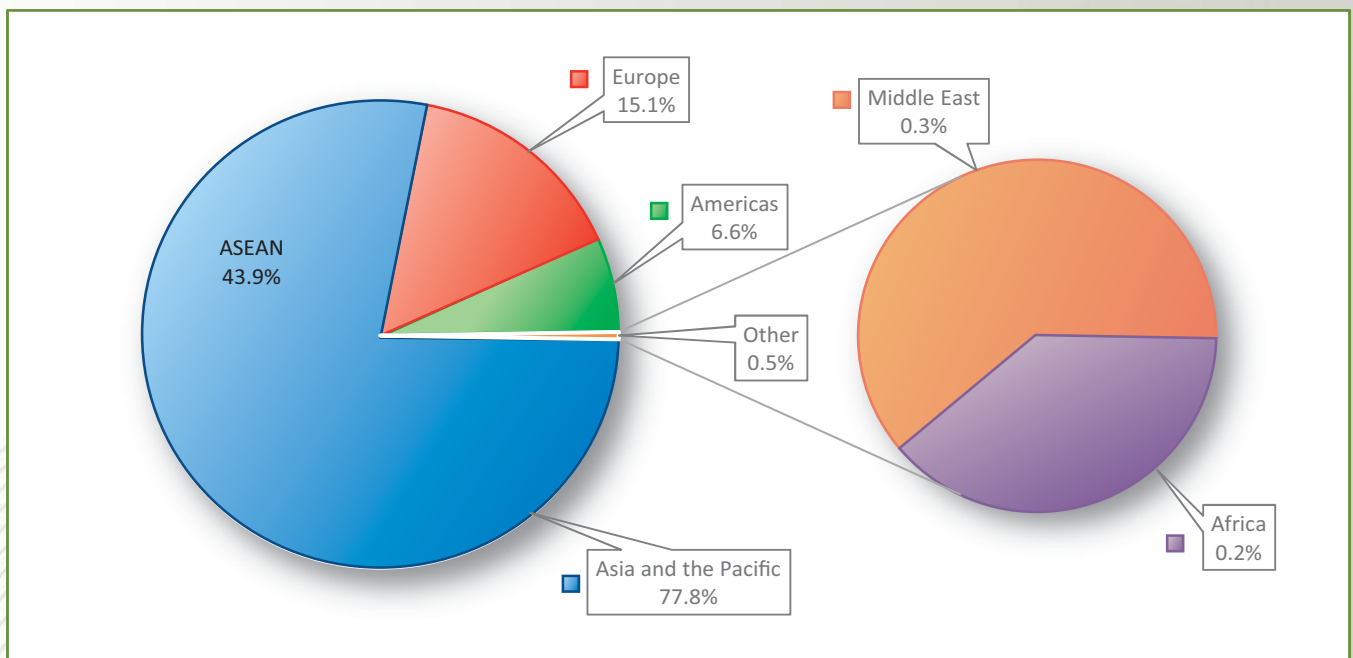
Regions Country of Residence	2014		2015			Share		Change
			Purposes of Visit			Total	Female	(%)
			Holiday	Business	Others			2015*
								2015*/14
<b>Grand Total</b>	<b>4,502,775</b>	<b>4,299,373</b>	<b>299,607</b>	<b>176,251</b>	<b>4,775,231</b>	<b>1,999,006</b>	<b>100.0</b>	<b>6.1</b>
<b>Southern Europe</b>	<b>73,498</b>	<b>80,355</b>	<b>2,354</b>	<b>1,545</b>	<b>84,254</b>	<b>36,510</b>	<b>1.8</b>	<b>14.6</b>
Croatia	837	1,059	36	209	1,304	512	0.0	55.8
Greece	1,272	1,473	71	51	1,595	632	0.0	25.4
Italy	29,548	30,812	963	402	32,177	13,376	0.7	8.9
Malta		422	11	29	462	173	0.0	
Portugal	4,638	5,638	178	131	5,947	2,706	0.1	28.2
Serbia	707	650	24	189	863	354	0.0	22.1
Slovenia	1,017	1,160	48	49	1,257	553	0.0	23.6
Spain	30,678	34,058	546	243	34,847	16,152	0.7	13.6
Turkey	4,801	5,083	477	242	5,802	2,052	0.1	20.8
Other Europe	3,138	3,642	337	1,076	5,055	2,217	0.1	61.1
<b>Americas</b>	<b>276,669</b>	<b>285,601</b>	<b>12,229</b>	<b>17,696</b>	<b>315,526</b>	<b>143,858</b>	<b>6.6</b>	<b>14.0</b>
<b>North America</b>	<b>249,217</b>	<b>253,747</b>	<b>11,501</b>	<b>16,224</b>	<b>281,472</b>	<b>127,934</b>	<b>5.9</b>	<b>12.9</b>
Canada	52,264	52,339	2,419	2,076	56,834	25,921	1.2	8.7
Mexico	5,587	6,943	55	130	7,128	3,765	0.1	27.6
United States	191,366	194,465	9,027	14,018	217,510	98,248	4.6	13.7
<b>Central America</b>	<b>420</b>	<b>536</b>	<b>35</b>	<b>149</b>	<b>720</b>	<b>295</b>	<b>0.0</b>	
Costa Rica	420	413	15	37	465	211	0.0	10.7
Honduras		40	11	61	112	43	0.0	
Jamaica		83	9	51	143	41	0.0	
<b>South America</b>	<b>25,167</b>	<b>28,762</b>	<b>432</b>	<b>512</b>	<b>29,706</b>	<b>14,179</b>	<b>0.6</b>	<b>18.0</b>
Argentina	5,737	7,762	50	58	7,870	3,716	0.2	37.2
Brazil	9,916	10,307	156	155	10,618	4,962	0.2	7.1
Chile	5,270	4,872	43	53	4,968	2,476	0.1	-5.7
Colombia	2,231	2,753	77	73	2,903	1,446	0.1	30.1
Ecuador	372	511	23	26	560	274	0.0	50.5
Peru	902	971	26	63	1,060	509	0.0	17.5
Uruguay	739	949	15	40	1,004	464	0.0	35.9
Venezuela		637	42	44	723	332	0.0	
Other America	1,865	2,556	261	811	3,628	1,450	0.1	94.5
<b>Africa</b>	<b>6,212</b>	<b>7,240</b>	<b>1,125</b>	<b>873</b>	<b>9,238</b>	<b>3,517</b>	<b>0.2</b>	<b>48.7</b>
<b>North Africa</b>	<b>84</b>	<b>687</b>	<b>63</b>	<b>93</b>	<b>843</b>	<b>312</b>	<b>0.0</b>	
Morocco		433	42	30	505	202	0.0	
Sudan	84	83	9	39	131	40	0.0	56.0
Tunisia		171	12	24	207	70	0.0	
<b>Subsaharan Africa</b>	<b>5,681</b>	<b>5,954</b>	<b>995</b>	<b>593</b>	<b>7,542</b>	<b>2,887</b>	<b>0.2</b>	<b>32.8</b>
Cameroon	132	153	14	35	202	56	0.0	53.0
Congo	59	70	9	28	107	27	0.0	81.4
Ghana	95	67	13	13	93	19	0.0	-2.1
Kenya	250	290	18	36	344	163	0.0	37.6
Liberia	49	35	8	12	55	12	0.0	12.2
Nigeria	644	465	557	47	1,069	113	0.0	66.0
South Africa	4,374	4,643	339	354	5,336	2,388	0.1	22.0
Tanzania		62	8	23	93	27	0.0	
Uganda	78	95	10	16	121	33	0.0	55.1
Zimbabwe		74	19	29	122	49	0.0	
Other Africa	447	599	67	187	853	318	0.0	90.8
<b>Middle East</b>	<b>12,404</b>	<b>13,558</b>	<b>568</b>	<b>519</b>	<b>14,645</b>	<b>5,054</b>	<b>0.3</b>	<b>18.1</b>
Egypt	341	490	68	29	587	156	0.0	72.1
Iran	730	458	45	22	525	165	0.0	-28.1
Iraq	106	123	19	27	169	36	0.0	59.4
Israel	9,317	9,234	267	56	9,557	3,977	0.2	2.6
Jordan		272	37	31	340	60	0.0	
Kuwait	876	852	9	55	916	50	0.0	4.6
Oman	160	185	6	23	214	31	0.0	33.8
Palestine	73	59	9	16	84	11	0.0	15.1
Qatar	67	83	8	26	117	33	0.0	74.6
Saudi Arabia	164	252	12	43	307	26	0.0	87.2
Syria		235	9	16	260	48	0.0	
United Arab Emirates	104	310	29	28	367	89	0.0	252.9
Yemen	150	414	10	28	452	135	0.0	201.3
Other Middle East	316	591	40	119	750	237	0.0	137.3



## International Tourist Arrivals to Cambodia by Regions in 2015

(by all means of transportation)

Months	Asia & the Pacific		Europe	Americas	Africa	Middle East	Total
		ASEAN					
<b>Q1</b>	<b>955,839</b>	<b>466,596</b>	<b>243,165</b>	<b>101,761</b>	<b>2,281</b>	<b>4,790</b>	<b>1,307,836</b>
January	335,849	157,923	85,466	36,706	780	1,776	460,577
February	309,712	144,068	84,103	33,908	757	1,727	430,207
March	310,278	164,605	73,596	31,147	744	1,287	417,052
<b>Q2</b>	<b>808,356</b>	<b>487,940</b>	<b>115,836</b>	<b>65,673</b>	<b>1,947</b>	<b>2,342</b>	<b>994,154</b>
April	284,555	163,818	50,931	24,009	696	948	361,139
May	258,680	155,450	33,710	21,011	578	769	314,748
June	265,121	168,672	31,195	20,653	673	625	318,267
<b>Q3</b>	<b>839,435</b>	<b>464,404</b>	<b>143,573</b>	<b>56,686</b>	<b>2,025</b>	<b>3,161</b>	<b>1,044,880</b>
July	284,548	160,918	54,177	23,863	715	1,022	364,325
August	287,793	149,021	58,679	17,925	713	986	366,096
September	267,094	154,465	30,717	14,898	597	1,153	314,459
<b>Q4</b>	<b>1,113,058</b>	<b>678,818</b>	<b>216,560</b>	<b>91,406</b>	<b>2,985</b>	<b>4,352</b>	<b>1,428,361</b>
October	333,539	204,320	50,031	23,552	711	1,089	408,922
November	329,512	196,896	81,072	32,054	673	1,329	444,640
December	450,007	277,602	85,457	35,800	1,601	1,934	574,799
<b>Total</b>	<b>3,716,688</b>	<b>2,097,758</b>	<b>719,134</b>	<b>315,526</b>	<b>9,238</b>	<b>14,645</b>	<b>4,775,231</b>
share (%)	77.8	43.9	15.1	6.6	0.2	0.3	100.0



## International Tourist Arrivals to Cambodia by Mode of Arrivals in 2014 - 2015

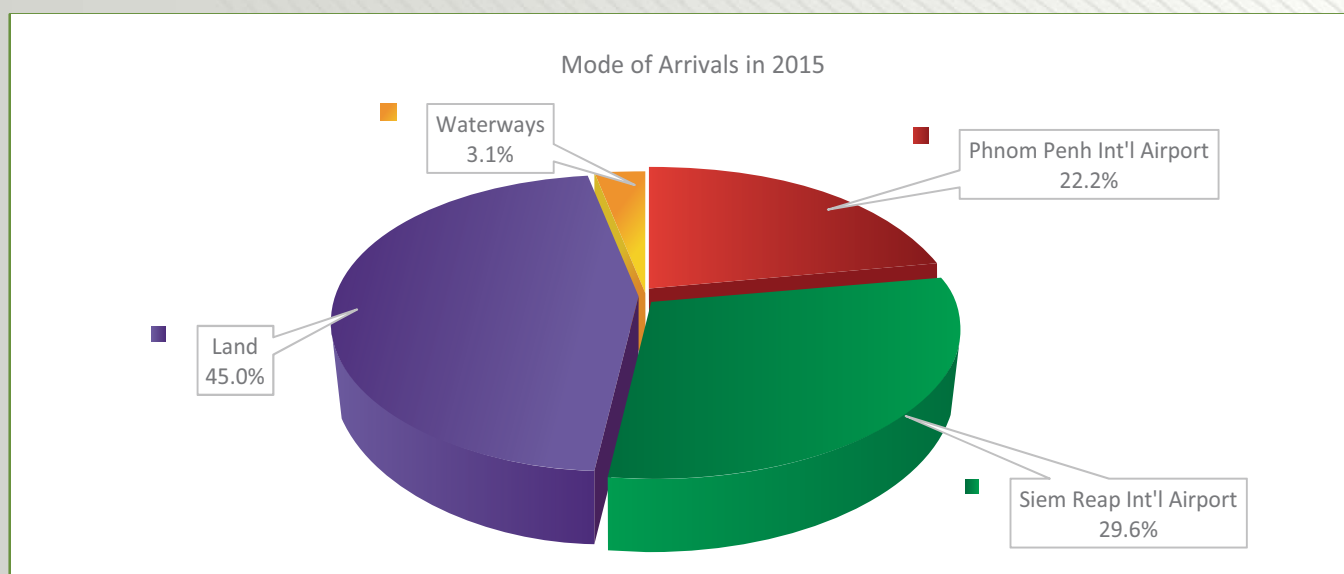
(by all means of transportation)

Months	2014				2015				Change (%) 2015*/14
	Air	Land	Waterways	Total	Air	Land	Waterways	Total	
<b>Q1</b>	<b>698,969</b>	<b>536,588</b>	<b>32,365</b>	<b>1,267,922</b>	<b>733,468</b>	<b>528,943</b>	<b>45,425</b>	<b>1,307,836</b>	<b>3.1</b>
January	253,930	177,854	10,261	442,045	262,356	185,550	12,671	460,577	4.2
February	240,606	175,369	9,826	425,801	241,755	171,267	17,185	430,207	1.0
March	204,433	183,365	12,278	400,076	229,357	172,126	15,569	417,052	4.2
<b>Q2</b>	<b>438,215</b>	<b>482,358</b>	<b>12,873</b>	<b>933,446</b>	<b>497,429</b>	<b>470,101</b>	<b>26,624</b>	<b>994,154</b>	<b>6.5</b>
April	161,320	165,739	5,631	332,690	181,474	167,098	12,567	361,139	8.6
May	137,432	160,139	2,731	300,302	161,003	147,968	5,777	314,748	4.8
June	139,463	156,480	4,511	300,454	154,952	155,035	8,280	318,267	5.9
<b>Q3</b>	<b>497,472</b>	<b>480,425</b>	<b>20,793</b>	<b>998,690</b>	<b>563,767</b>	<b>452,048</b>	<b>29,065</b>	<b>1,044,880</b>	<b>4.6</b>
July	169,351	164,703	6,037	340,091	193,639	160,973	9,713	364,325	7.1
August	179,657	160,159	7,395	347,211	204,276	149,180	12,640	366,096	5.4
September	148,464	155,563	7,361	311,388	165,852	141,895	6,712	314,459	1.0
<b>Q4</b>	<b>638,837</b>	<b>632,961</b>	<b>30,919</b>	<b>1,302,717</b>	<b>681,337</b>	<b>700,046</b>	<b>46,978</b>	<b>1,428,361</b>	<b>9.6</b>
October	176,096	206,747	7,794	390,637	191,602	205,223	12,097	408,922	4.7
November	217,125	185,244	9,132	411,501	234,678	195,897	14,065	444,640	8.1
December	245,616	240,970	13,993	500,579	255,057	298,926	20,816	574,799	14.8
<b>Total</b>	<b>2,273,493</b>	<b>2,132,332</b>	<b>96,950</b>	<b>4,502,775</b>	<b>2,476,001</b>	<b>2,151,138</b>	<b>148,092</b>	<b>4,775,231</b>	<b>6.1</b>

## International Tourist Arrivals to Cambodia by Mode of Arrivals in 2011 - 2015

(by all means of transportation)

Mode of Arrivals						Share (%) 2015*	Change (%)			2015*/14
	2011	2012	2013	2014	2015		12/11	13/12	14/13	
<b>Air</b>	<b>1,480,407</b>	<b>1,722,083</b>	<b>2,017,658</b>	<b>2,273,493</b>	<b>2,476,001</b>	<b>51.9</b>	<b>16.3</b>	<b>17.2</b>	<b>12.7</b>	<b>8.9</b>
Phnom Penh Int'l Airport	645,235	716,584	836,377	917,800	1,061,034	22.2	11.1	16.7	9.7	15.6
Siem Reap Int'l Airport	835,172	1,005,499	1,181,281	1,355,693	1,414,967	29.6	20.4	17.5	14.8	4.4
<b>Land &amp; Waterways</b>	<b>1,401,455</b>	<b>1,862,224</b>	<b>2,192,507</b>	<b>2,229,282</b>	<b>2,299,230</b>	<b>48.1</b>	<b>32.9</b>	<b>17.7</b>	<b>1.7</b>	<b>3.1</b>
Land	1,320,311	1,785,726	2,117,454	2,132,332	2,151,138	45.0	35.3	18.6	0.7	0.9
Waterways	81,144	76,498	75,053	96,950	148,092	3.1	-5.7	-1.9	29.2	52.8
<b>Total</b>	<b>2,881,862</b>	<b>3,584,307</b>	<b>4,210,165</b>	<b>4,502,775</b>	<b>4,775,231</b>	<b>100.0</b>	<b>24.4</b>	<b>17.5</b>	<b>7.0</b>	<b>6.1</b>





## Top Ten Generating Markets from 2009 - 2015

2009				
rank		arrivals	share (%)	change (%)
1	Vietnam	316,202	14.6	50.9
2	Korea	197,725	9.2	-25.8
3	U.S.A	148,482	6.9	2.4
4	Japan	146,286	6.8	-10.7
5	China	128,210	5.9	-1.1
6	United Kingdom	106,837	4.9	8.9
7	France	105,437	4.9	8.1
8	Thailand	102,018	4.7	-6.4
9	Lao PDR	94,181	4.4	54.6
10	Australia	84,581	3.9	-0.4

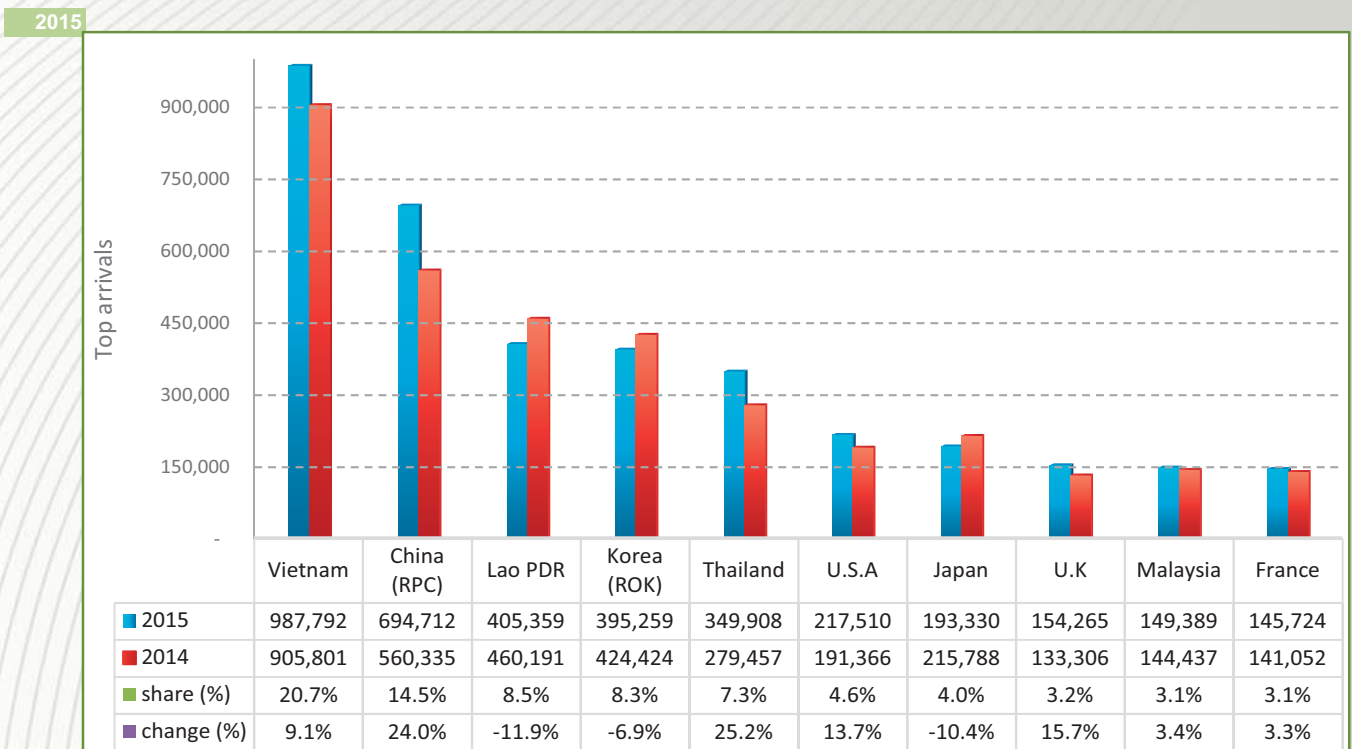
2010				
rank		arrivals	share (%)	change (%)
1	Vietnam	514,289	20.5	62.6
2	Korea	289,702	11.6	46.5
3	China	177,636	7.1	38.6
4	Japan	151,795	6.1	3.8
5	Thailand	149,108	5.9	16.3
6	U.S.A	146,005	5.8	-1.7
7	France	113,285	4.5	7.4
8	U.K	103,067	4.1	-3.5
9	Australia	93,598	3.7	10.7
10	Taiwan, China	91,229	3.6	26.5

2011				
rank		arrivals	share (%)	change (%)
1	Vietnam	614,090	21.3	19.4
2	Korea	342,810	11.9	18.3
3	China	247,197	8.6	39.2
4	Japan	161,804	5.6	6.6
5	U.S.A	153,953	5.3	5.4
6	Lao PDR	128,525	4.5	39.3
7	France	117,408	4.1	3.6
8	Thailand	116,758	4.1	-21.7
9	Australia	105,010	3.6	12.2
10	U.K	104,052	3.6	1.0

2012				
rank		arrivals	share (%)	change (%)
1	Vietnam	763,136	21.3	24.3
2	Korea (ROK)	411,491	11.5	20
3	China (RPC)	333,894	9.3	35.1
4	Lao PDR	254,022	7.1	97.6
5	Thailand	201,422	5.6	72.5
6	Japan	179,327	5	10.8
7	U.S.A	173,076	4.8	12.4
8	France	121,175	3.4	3.2
9	Australia	117,729	3.3	12.1
10	Malaysia	116,764	3.3	13.4

2013				
rank		arrivals	share (%)	change (%)
1	Vietnam	854,104	20.3	11.9
2	China (RPC)	463,123	11.0	38.7
3	Korea (ROK)	435,009	10.3	5.7
4	Lao PDR	414,531	9.8	63.2
5	Thailand	221,259	5.3	9.8
6	Japan	206,932	4.9	15.4
7	U.S.A	184,964	4.4	6.9
8	Australia	132,028	3.1	12.1
9	Russia	131,675	3.1	32.0
10	France	131,486	3.1	8.5

2014				
rank		arrivals	share (%)	change (%)
1	Vietnam	905,801	20.1	6.1
2	China (RPC)	560,335	12.4	21.0
3	Lao PDR	460,191	10.2	11.0
4	Korea (ROK)	424,424	9.4	-2.4
5	Thailand	279,457	6.2	26.3
6	Japan	215,788	4.8	4.3
7	U.S.A	191,366	4.2	5.3
8	Malaysia	144,437	3.2	10.5
9	France	141,052	3.1	7.3
10	Australia	134,167	3.0	1.6



## International Tourist Arrivals to Cambodia by International Border Check-points in 2015

No. International border check-points	Months													share (%)
	Jan	Feb	Mar	Apr	May	Jun	Jul	Aug	Sep	Oct	Nov	Dec	TOTAL	
<b>Grand Total</b>	<b>460,577</b>	<b>430,207</b>	<b>417,052</b>	<b>361,139</b>	<b>314,748</b>	<b>318,267</b>	<b>364,325</b>	<b>366,096</b>	<b>314,459</b>	<b>408,922</b>	<b>444,640</b>	<b>574,799</b>	<b>4,775,231</b>	<b>100.0</b>
<b>Air</b>	<b>262,356</b>	<b>241,755</b>	<b>229,357</b>	<b>181,474</b>	<b>161,003</b>	<b>154,952</b>	<b>193,639</b>	<b>204,276</b>	<b>165,852</b>	<b>191,602</b>	<b>234,678</b>	<b>255,057</b>	<b>2,476,001</b>	<b>51.9</b>
Phnom Penh Int'l Airport	93,817	84,319	94,424	79,805	79,166	80,095	93,931	92,880	78,669	87,099	97,726	99,103	1,061,034	22.2
Siem Reap Int'l Airport	168,539	157,436	134,933	101,669	81,837	74,857	99,708	111,396	87,183	104,503	136,952	155,954	1,414,967	29.6
<b>Lands and Waterways</b>	<b>198,221</b>	<b>188,452</b>	<b>187,695</b>	<b>179,665</b>	<b>153,745</b>	<b>163,315</b>	<b>170,686</b>	<b>161,820</b>	<b>148,607</b>	<b>217,320</b>	<b>209,962</b>	<b>319,742</b>	<b>2,299,230</b>	<b>48.1</b>
Lands	192,314	178,964	180,372	173,654	152,787	161,877	166,911	155,863	146,489	210,671	204,683	305,050	2,229,635	46.7
Waterways	5,907	9,488	7,323	6,011	958	1,438	3,775	5,957	2,118	6,649	5,279	14,692	69,595	1.5
<b>1 Cambodia - Thailand</b>	<b>100,822</b>	<b>96,559</b>	<b>93,332</b>	<b>75,479</b>	<b>71,329</b>	<b>72,740</b>	<b>79,457</b>	<b>77,509</b>	<b>60,940</b>	<b>104,849</b>	<b>92,215</b>	<b>185,442</b>	<b>1,110,673</b>	<b>23.3</b>
Poi Pet	45,293	44,060	43,135	31,088	29,814	26,580	33,960	29,937	34,278	64,605	64,104	84,327	531,181	11.1
Cham Yeam	5,776	6,199	3,928	3,497	2,790	3,386	3,246	3,037	3,775	4,496	4,208	15,624	59,962	1.3
Prom	15,408	9,127	9,894	11,639	11,643	12,032	11,862	9,764	4,245	13,362	4,319	24,688	137,983	2.9
Daung	26,464	21,899	26,593	21,910	24,026	23,375	25,274	26,495	11,196	8,452	7,739	35,912	259,335	5.4
O'Smach	2,574	2,511	3,293	2,339	2,199	2,147	1,864	2,984	1,836	2,982	3,681	6,271	34,681	0.7
Chorm	1,792	5,806	1,423	1,184	857	5,220	1,283	1,523	5,610	6,861	6,109	6,265	43,933	0.9
Sihanoukville (Int'l sea port)	3,515	6,957	5,066	3,822	0	0	1,968	3,769	0	4,091	2,055	12,355	43,598	0.9
<b>2 Cambodia - Vietnam</b>	<b>92,513</b>	<b>85,372</b>	<b>88,402</b>	<b>99,869</b>	<b>77,960</b>	<b>86,858</b>	<b>86,398</b>	<b>79,618</b>	<b>84,129</b>	<b>108,563</b>	<b>112,705</b>	<b>129,058</b>	<b>1,131,445</b>	<b>23.7</b>
Bavet	49,809	48,421	49,802	64,239	47,296	50,198	55,210	47,614	50,519	73,803	75,742	77,068	689,721	14.4
Phnom Den	4,322	4,574	6,598	5,740	5,899	5,861	5,464	5,602	4,082	5,064	5,823	5,266	64,295	1.3
Trapaing Plong	5,566	4,161	3,210	2,829	2,308	2,350	1,846	3,001	4,578	3,423	3,545	4,453	41,270	0.9
Trapaing Sré	5,419	4,535	5,390	5,039	3,909	5,112	4,424	3,865	4,503	4,047	4,006	4,232	54,481	1.1
Prek Chak	5,430	7,016	4,967	6,312	4,377	7,724	4,736	4,245	7,117	7,490	4,611	9,246	73,271	1.5
Oya Dao	7,747	3,376	4,709	3,136	3,715	3,370	3,330	3,006	3,097	2,642	3,235	16,447	57,810	1.2
Banteay Chak Krey	3,813	2,012	2,029	2,629	3,341	2,275	2,140	2,065	2,087	2,231	2,386	1,941	28,949	0.6
Prey Vor	1,251	1,049	1,194	1,200	1,338	1,688	1,503	1,349	1,434	1,857	1,347	1,944	17,154	0.4
Kaam Samnor	6,764	7,697	8,246	6,556	4,819	6,842	5,938	6,683	4,594	5,448	8,786	6,124	78,497	1.6
Koh Rorka	950	797	1,117	1,014	877	993	1,066	1,060	978	1,088	1,153	1,183	12,276	0.3
Phnom Penh Port	1,442	1,734	1,140	1,175	81	445	741	1,128	1,140	1,470	2,071	1,154	13,721	0.3
<b>3 Cambodia - Lao</b>	<b>4,886</b>	<b>6,521</b>	<b>5,961</b>	<b>4,317</b>	<b>4,456</b>	<b>3,717</b>	<b>4,831</b>	<b>4,693</b>	<b>3,538</b>	<b>3,908</b>	<b>5,042</b>	<b>5,242</b>	<b>57,112</b>	<b>1.2</b>
Trapaing Kreal	4,886	6,521	5,961	4,317	4,456	3,717	4,831	4,693	3,538	3,908	5,042	5,242	57,112	1.2



**International Tourist Arrivals to Cambodia by International Border Check-points in 2015**  
(by purposes of visit)

No.	International Border Check-points	2014	2015			Total	Share (%)	Change (%)
			Purposes of Visit					
			Holiday	Business	Others			
	<b>Grand Total</b>	<b>4,502,775</b>	<b>4,299,373</b>	<b>299,607</b>	<b>176,251</b>	<b>4,775,231</b>	<b>100.0</b>	<b>6.1</b>
	<b>Air</b>	<b>2,273,493</b>	<b>2,232,130</b>	<b>193,794</b>	<b>50,077</b>	<b>2,476,001</b>	<b>51.9</b>	<b>8.9</b>
	Phnom Penh Int'l Airport	917,800	856,181	181,170	23,683	1,061,034	22.2	15.6
	Siem Reap Int'l Airport	1,355,693	1,375,949	12,624	26,394	1,414,967	29.6	4.4
	<b>Lands and Waterways</b>	<b>2,229,282</b>	<b>2,067,243</b>	<b>105,813</b>	<b>126,174</b>	<b>2,299,230</b>	<b>48.1</b>	<b>3.1</b>
	Lands	2,191,021	2,005,551	105,781	118,303	2,229,635	46.7	1.8
	Waterways	38,261	61,692	32	7,871	69,595	1.5	81.9
<b>1</b>	<b>Cambodia - Thailand</b>	<b>1,026,655</b>	<b>1,037,562</b>	<b>35,674</b>	<b>37,437</b>	<b>1,110,673</b>	<b>23.3</b>	<b>8.2</b>
	Poi Pet	536,813	493,314	26,087	11,780	531,181	11.1	-1.0
	Cham Yeam	62,384	46,564	7,653	5,745	59,962	1.3	-3.9
	Prom	186,341	131,198	853	5,932	137,983	2.9	-26.0
	Daung	365,324	249,571	211	9,553	259,335	5.4	-29.0
	O'Smach	28,038	33,734	682	265	34,681	0.7	23.7
	Chorm	31,695	39,662	173	4,098	43,933	0.9	38.6
	Sihanoukville (Int'l sea port)	21,735	43,519	15	64	43,598	0.9	100.6
<b>2</b>	<b>Cambodia - Vietnam</b>	<b>791,621</b>	<b>974,448</b>	<b>68,684</b>	<b>88,313</b>	<b>1,131,445</b>	<b>23.7</b>	<b>42.9</b>
	Bavet	578,951	626,217	48,781	14,723	689,721	14.4	19.1
	Phnom Den	46,042	49,173	868	14,254	64,295	1.3	39.6
	Trapaing Plong	41,293	30,905	3,966	6,399	41,270	0.9	-0.1
	Trapaing Sré	53,963	43,056	2,976	8,449	54,481	1.1	1.0
	Prek Chak	44,478	61,026	1,514	10,731	73,271	1.5	64.7
	Oya Dao	65,672	44,265	8,416	5,129	57,810	1.2	-12.0
	Banteay Chak Krey	26,280	24,521	511	3,917	28,949	0.6	10.2
	Prey Vor	16,422	13,572	472	3,110	17,154	0.4	4.5
	Kaam Samnor	58,689	63,540	1,163	13,794	78,497	1.6	33.8
	Koh Rorka	5,442	4,493	4	7,779	12,276	0.3	125.6
	Phnom Penh Port	11,084	13,680	13	28	13,721	0.3	23.8
<b>3</b>	<b>Cambodia - Lao</b>	<b>48,636</b>	<b>55,233</b>	<b>1,455</b>	<b>424</b>	<b>57,112</b>	<b>1.2</b>	<b>17.4</b>
	Trapaing Kreal	48,636	55,233	1,455	424	57,112	1.2	17.4

## Cambodian Outbound Tourism by Int'l Border Check-points in 2015

(by mode of transport and purposes of visit)

No. Check-points	International Border	2014		2015			share	change
		Purposes of Visit					(%)	(%)
		Holiday	Business	Others	Total	2015*	2015*/14	
<b>Grand Total</b>		<b>955,909</b>	<b>1,122,123</b>	<b>1,779</b>	<b>70,116</b>	<b>1,194,018</b>	<b>100.0</b>	<b>24.9</b>
<b>Air</b>		<b>243,069</b>	<b>262,257</b>	<b>911</b>	<b>12,549</b>	<b>275,717</b>	<b>23.1</b>	<b>13.4</b>
Phnom Penh Int'l Airport		235,408	253,612	836	12,467	266,915	22.4	13.4
Siem Reap Int'l Airport		7,661	8,645	75	82	8,802	0.7	14.9
<b>Lands and Waterways</b>		<b>712,840</b>	<b>859,866</b>	<b>868</b>	<b>57,567</b>	<b>918,301</b>	<b>76.9</b>	<b>28.8</b>
Lands		710,732	857,568	867	57,562	915,997	76.7	28.9
Waterways		2,108	2,298	1	5	2,304	0.2	9.3
<b>1 Cambodia - Thailand</b>		<b>477,396</b>	<b>581,298</b>	<b>393</b>	<b>46,358</b>	<b>628,049</b>	<b>52.6</b>	<b>31.6</b>
Poi Pet		367,625	428,467	342	45,902	474,711	39.8	29.1
Cham Yeam		26,527	32,259	22	177	32,458	2.7	22.4
Prom		24,351	37,736	14	164	37,914	3.2	55.7
Daung		41,223	54,317	2	25	54,344	4.6	31.8
O'Smach		14,310	23,039	3	12	23,054	1.9	61.1
Chorm		3,360	5,480	10	78	5,568	0.5	65.7
<b>2 Cambodia - Vietnam</b>		<b>229,061</b>	<b>272,847</b>	<b>463</b>	<b>9,196</b>	<b>282,506</b>	<b>23.7</b>	<b>23.3</b>
Bavet		205,821	246,268	441	5,069	251,778	21.1	22.3
Phnom Den		6,370	6,952	1	42	6,995	0.6	9.8
Trapaing Plong		5,348	7,896	1	264	8,161	0.7	52.6
Trapaing Sré		1,409	1,023	0	1,508	2,531	0.2	79.6
Prek Chak		3,313	3,894	4	51	3,949	0.3	19.2
Oya Dao		1,749	1,002	10	2,232	3,244	0.3	85.5
Banteay Chak Krey		2,323	2,841	5	17	2,863	0.2	23.2
Prey Vor		565	597	0	6	603	0.1	6.7
Koh Rorka		55	76	0	2	78	0.0	41.8
Kaam Samnor		2,074	2,134	1	5	2,140	0.2	3.2
Phnom Penh Port		34	164	0	0	164	0.0	382.4
<b>3 Cambodia - Lao</b>		<b>6,383</b>	<b>5,721</b>	<b>12</b>	<b>2,013</b>	<b>7,746</b>	<b>0.6</b>	<b>21.4</b>
Trapaing Kreal		6,383	5,721	12	2,013	7,746	0.6	21.4

## Cambodian Outbound Tourism by Months in 2008 - 2015

Months	Cambodian Outbound Tourism								Change (%)		
	2008	2009	2010	2011	2012	2013	2014	2015	2013/12	2014/13	2015*/14
January	261,007	20,021	37,611	47,641	71,541	71,720	68,618	82,107	0.3	-4.3	19.7
February	236,375	19,871	32,818	42,124	59,042	65,259	67,924	77,358	10.5	4.1	13.9
March	101,342	21,558	35,666	47,552	57,684	64,565	72,430	87,447	11.9	12.2	20.7
April	26,791	29,481	46,323	52,138	70,738	81,998	90,794	106,444	15.9	10.7	17.2
May	23,610	30,699	42,055	52,907	63,872	83,715	84,366	108,225	31.1	0.8	28.3
June	19,430	24,426	37,844	50,671	66,070	74,035	70,654	91,433	12.1	-4.6	29.4
July	17,688	25,746	44,290	64,015	65,590	67,758	85,357	96,692	3.3	26.0	13.3
August	20,611	30,934	44,866	74,871	64,786	69,420	81,405	108,335	7.2	17.3	33.1
September	20,860	34,452	45,822	77,264	66,002	65,923	86,031	106,196	-0.1	30.5	23.4
October	19,027	36,550	49,932	64,256	70,435	78,287	81,933	121,502	11.1	4.7	48.3
November	20,231	31,857	43,981	66,045	69,977	76,657	86,560	108,859	9.5	12.9	25.8
December	18,924	34,103	43,782	70,132	66,181	72,309	79,837	99,420	9.3	10.4	24.5
<b>Total</b>	<b>785,896</b>	<b>339,698</b>	<b>504,990</b>	<b>709,616</b>	<b>791,918</b>	<b>871,646</b>	<b>955,909</b>	<b>1,194,018</b>	<b>10.1</b>	<b>9.7</b>	<b>24.9</b>



## International Outbound Tourist Departures by Int'l Border Check Points in 2015 (by mode of transport and purposes of visit)

No.	International Border Check Points	2014	2015			Total	Share (%)	Change (%)
			Purposes of Visit					
			Holiday	Business	Others		2015*	2015*/14
	<b>Grand Total</b>	<b>4,211,424</b>	<b>3,930,734</b>	<b>245,157</b>	<b>49,728</b>	<b>4,225,619</b>	<b>100.0</b>	<b>0.3</b>
	<b>Air</b>	<b>2,032,936</b>	<b>2,258,713</b>	<b>167,971</b>	<b>28,686</b>	<b>2,455,370</b>	<b>58.1</b>	<b>20.8</b>
	Phnom Penh Int'l Airport	864,326	879,102	156,659	24,613	1,060,374	25.1	22.7
	Siem Reap Int'l Airport	1,168,610	1,379,611	11,312	4,073	1,394,996	33.0	19.4
	<b>Lands and Waterways</b>	<b>2,178,488</b>	<b>1,672,021</b>	<b>77,186</b>	<b>21,042</b>	<b>1,770,249</b>	<b>41.9</b>	<b>-18.7</b>
	Lands	2,125,437	1,598,779	77,178	19,717	1,695,674	40.1	-20.2
	Waterways	53,051	73,242	8	1,325	74,575	1.8	40.6
<b>1</b>	<b>Cambodia - Thailand</b>	<b>1,224,470</b>	<b>1,049,511</b>	<b>37,883</b>	<b>8,344</b>	<b>1,095,738</b>	<b>25.9</b>	<b>-10.5</b>
	Poi Pet	653,590	632,524	32,167	5,739	670,430	15.9	2.6
	Cham Yeam	62,601	58,727	4,664	605	63,996	1.5	2.2
	Prom	174,018	109,238	253	773	110,264	2.6	-36.6
	Daung	273,198	173,209	47	763	174,019	4.1	-36.3
	O'Smach	24,016	24,932	640	310	25,882	0.6	7.8
	Chorm	19,333	13,298	111	102	13,511	0.3	-30.1
	Sihanoukville (Int'l sea port)	17,714	37,583	1	52	37,636	0.9	112.5
<b>2</b>	<b>Cambodia - Vietnam</b>	<b>917,399</b>	<b>588,393</b>	<b>39,053</b>	<b>12,538</b>	<b>639,984</b>	<b>15.1</b>	<b>-30.2</b>
	Bavet	615,923	412,908	29,447	3,301	445,656	10.5	-27.6
	Phnom Den	39,393	29,158	176	1,293	30,627	0.7	-22.3
	Trapaing Plong	31,918	14,190	1,942	637	16,769	0.4	-47.5
	Trapaing Sré	63,539	25,332	1,243	1,815	28,390	0.7	-55.3
	Prek Chak	39,622	27,757	599	1,767	30,123	0.7	-24.0
	Oya Dao	55,890	18,791	5,087	185	24,063	0.6	-56.9
	Banteay Chak Krey	21,667	15,638	239	728	16,605	0.4	-23.4
	Prey Vor	12,514	7,693	313	640	8,646	0.2	-30.9
	Koh Rorka	1,596	1,267	0	899	2,166	0.1	35.7
	Kaam Samnor	25,431	24,952	7	1,273	26,232	0.6	3.1
	Phnom Penh Port	9,906	10,707	0	0	10,707	0.3	8.1
<b>3</b>	<b>Cambodia - Lao</b>	<b>36,619</b>	<b>34,117</b>	<b>250</b>	<b>160</b>	<b>34,527</b>	<b>0.8</b>	<b>-5.7</b>
	Trapaing Kreal	36,619	34,117	250	160	34,527	0.8	-5.7

## International Outbound Tourist Departures by Months in 2009 - 2015

Months	International Outbound Tourist Departures							Change (%)		
	2009	2010	2011	2012	2013	2014	2015	2013/12	2014/13	2015*/14
January	199,905	215,702	279,303	356,884	413,103	447,276	447,259	15.8	8.3	0.0
February	183,808	212,222	253,363	311,097	386,508	416,706	418,965	24.2	7.8	0.5
March	188,323	213,645	250,261	318,776	382,680	406,828	400,925	20.0	6.3	-1.5
April	150,744	183,147	215,957	275,739	323,714	319,318	337,825	17.4	-1.4	5.8
May	146,758	174,019	191,274	245,791	301,372	320,101	331,254	22.6	6.2	3.5
June	125,746	155,291	188,863	246,741	295,284	287,128	292,957	19.7	-2.8	2.0
July	150,580	185,426	230,580	246,741	333,425	325,697	331,103	35.1	-2.3	1.7
August	169,034	206,427	257,499	297,916	346,436	340,519	369,558	16.3	-1.7	8.5
September	130,337	159,720	215,988	237,456	285,082	279,932	261,036	20.1	-1.8	-6.8
October	143,354	188,208	220,797	278,170	318,058	307,931	297,967	14.3	-3.2	-3.2
November	173,102	230,741	254,434	315,143	370,712	356,684	350,634	17.6	-3.8	-1.7
December	190,136	230,275	288,990	374,130	417,223	403,304	386,136	11.5	-3.3	-4.3
<b>Total</b>	<b>1,951,827</b>	<b>2,354,823</b>	<b>2,847,309</b>	<b>3,504,584</b>	<b>4,173,597</b>	<b>4,211,424</b>	<b>4,225,619</b>	<b>19.1</b>	<b>0.9</b>	<b>0.3</b>

## Major Tourism Data in 1993 - 2015

Years	Arrivals		Average Length of Stays	Hotel Occupancy Rates	Tourism Receipts
	number	change (%)	(Days)	(%)	Million (US\$)
1993	118,183	-	N/A	N/A	N/A
1994	176,617	49.4	N/A	N/A	N/A
1995	219,680	24.4	8.00	37.0	100
1996	260,489	18.6	7.50	40.0	118
1997	218,843	-16.0	6.40	30.0	103
1998	289,524	32.3	5.20	40.0	166
1999	367,743	27.0	5.50	44.0	190
2000	466,365	26.8	5.50	45.0	228
2001	604,919	29.7	5.50	48.0	304
2002	786,524	30.0	5.80	50.0	379
2003	701,014	-10.9	5.50	50.0	347
2004	1,055,202	50.5	6.30	52.0	578
2005	1,421,615	34.7	6.30	52.0	832
2006	1,700,041	19.6	6.50	54.8	1,049
2007	2,015,128	18.5	6.50	54.8	1,403
2008	2,125,465	5.5	6.65	62.7	1,595
2009	2,161,577	1.7	6.45	63.6	1,561
2010	2,508,289	16.0	6.45	65.7	1,786
2011	2,881,862	14.9	6.50	66.2	1,912
2012	3,584,307	24.4	6.30	68.5	2,210
2013	4,210,165	17.5	6.75	69.5	2,547
2014	4,502,775	7.0	6.50	67.6	2,736
2015	4,775,231	6.1	6.80	70.2	3,012

### Average length of stays

Kind of tourists	Phnom Penh	Siem Reap	Expenditures
	(Days)	(Days)	(US\$ / Day)
GIT	4.45	4.30	
FIT	6.15	5.90	
<b>Average</b>	<b>5.30</b>	<b>5.10</b>	<b>95.10</b>

GIT: Group Inclusive Travelers

FIT: Free Independent Travelers

### Average expenditure of FIT

Items	Expenditure (US\$)
Accommodation	129.00
Food & beverage	123.50
Shopping	88.60
Local transport	64.50
Others	79.50
<b>Total</b>	<b>485.10</b>

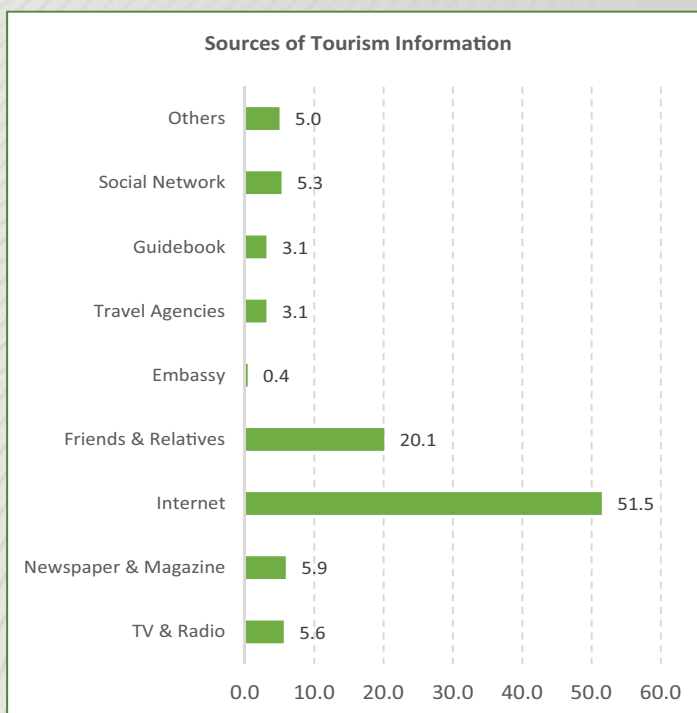
### Average expenditure of GIT

Items	Expenditure (US\$)
Package Tours	355.00
(Accommodation, F&B, Local transport, Ticket entrance...)	
Shopping	118.00
Others	101.00
<b>Total</b>	<b>574.00</b>



## Profile of international Tourist Arrivals to Cambodia in 2015 Inbound Tourism Survey 2015

<b>Tourist Characteristics</b>	
<b>Mode of Arrivals</b>	(%)
Air	51.9
Land	45.0
Waterways	3.1
<b>Sex</b>	(%)
Male	58.1
Female	41.9
<b>Frequency of Visit</b>	(%)
First Visit	75.5
Revisit	24.5
<b>Travel Arrangement</b>	(%)
GIT (Group Inclusive Travelers)	23.2
FIT (Free Independent Travelers)	76.8
<b>Type of Accommodations</b>	(%)
Hotel	69.5
Guesthouses	25.6
Others	4.9
<b>Age Group</b>	(%)
15 - 24	34.7
25 - 34	21.8
35 - 44	12.7
45 - 54	22.8
55 - 64	4.0
65 - Over	4.0
<b>Purposes of visit</b>	(%)
Holiday & Leisure	59.4
Business	10.9
VFR (Visiting Friends & Relatives)	4.0
Official Mission	12.9
MICE (Meeting Incentive Convention Exhibition)	2.0
Others	10.8
<b>Occupation</b>	(%)
Employee	25.6
Professional	20.8
Official	5.1
Business Person	9.9
Student	24.7
Retired	5.0
Others	8.9
<b>Entry Points</b>	(%)
Thailand	40.9
Vietnam	39.6
Laos PDR	2.1
Others (by Air) (Singapore, Malaysia, Korea, China, Japan, Taiwan (China), Hong Kong SAR, Myanmar Philippines, Others)	17.4
<b>Sources of Tourism Information</b>	(%)
TV & Radio	5.6
Newspaper & Magazine	5.9
Internet	51.5
Friends & Relatives	20.1
Embassy	0.4
Travel Agencies	3.1
Guidebook	3.1
Social Network	5.3
Others	5.0



# SECTION I

## PHNOM PENH INTERNATIONAL AIRPORT



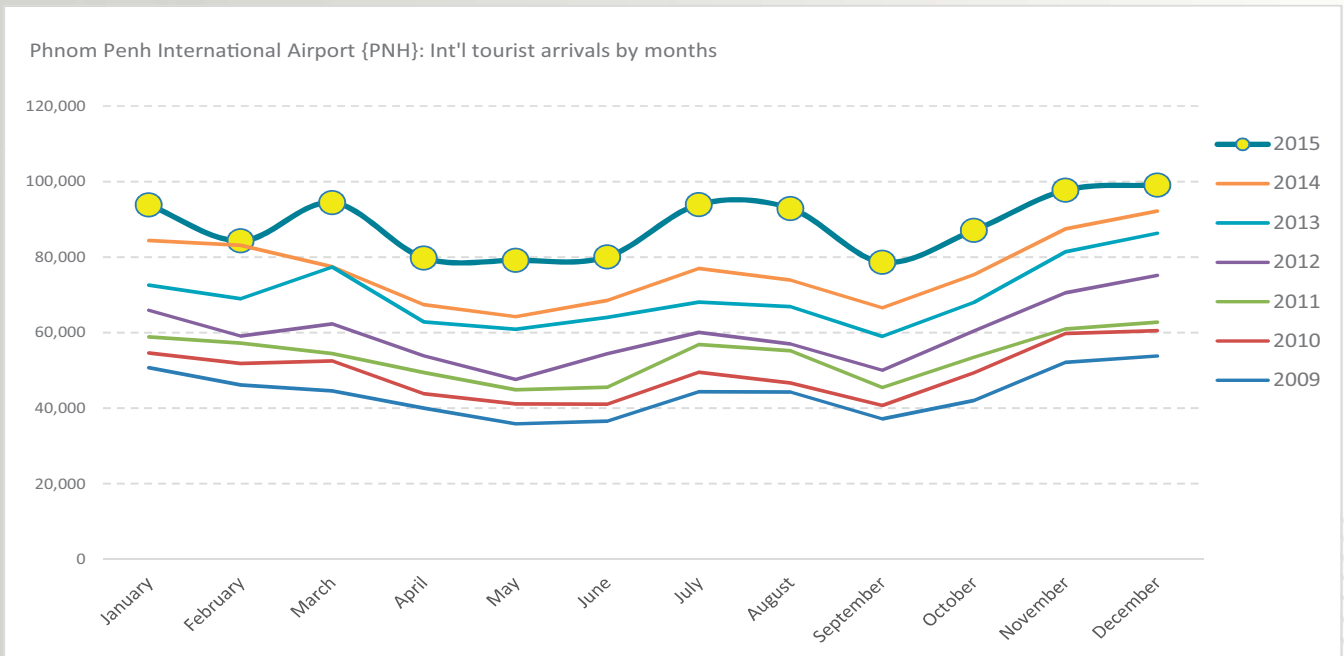




Photo by: Lang Solina

**Int'l Tourist Arrivals to Phnom Penh International Airport (PNH) by Months in 2009 - 2015**

Months	2009	2010	2011	2012	2013	2014	2015	Change (%)			
								2012/11	2013/12	2014/13	2015*/14
<b>Q1</b>	<b>141,496</b>	<b>158,979</b>	<b>170,558</b>	<b>187,408</b>	<b>218,912</b>	<b>245,071</b>	<b>272,560</b>	<b>9.9</b>	<b>16.8</b>	<b>11.9</b>	<b>11.2</b>
January	50,749	54,584	58,905	65,956	72,549	84,436	93,817	12.0	10.0	16.4	11.1
February	46,128	51,867	57,202	59,122	68,988	83,167	84,319	3.4	16.7	20.6	1.4
March	44,619	52,528	54,451	62,330	77,375	77,468	94,424	14.5	24.1	0.1	21.9
<b>Q2</b>	<b>112,410</b>	<b>126,012</b>	<b>139,906</b>	<b>155,878</b>	<b>187,758</b>	<b>200,182</b>	<b>239,066</b>	<b>11.4</b>	<b>20.5</b>	<b>6.6</b>	<b>19.4</b>
April	39,983	43,797	49,478	53,883	62,859	67,435	79,805	8.9	16.7	7.3	18.3
May	35,850	41,131	44,874	47,636	60,880	64,217	79,166	6.2	27.8	5.5	23.3
June	36,577	41,084	45,554	54,359	64,019	68,530	80,095	19.3	17.8	7.0	16.9
<b>Q3</b>	<b>125,812</b>	<b>136,939</b>	<b>157,531</b>	<b>167,096</b>	<b>193,961</b>	<b>217,489</b>	<b>265,480</b>	<b>6.1</b>	<b>16.1</b>	<b>12.1</b>	<b>22.1</b>
July	44,356	49,519	56,875	60,057	68,078	76,980	93,931	5.6	13.4	13.1	22.0
August	44,264	46,697	55,182	57,016	66,865	73,895	92,880	3.3	17.3	10.5	25.7
September	37,192	40,723	45,474	50,023	59,018	66,614	78,669	10.0	18.0	12.9	18.1
<b>Q4</b>	<b>148,027</b>	<b>169,698</b>	<b>177,240</b>	<b>206,202</b>	<b>235,746</b>	<b>255,058</b>	<b>283,928</b>	<b>16.3</b>	<b>14.3</b>	<b>8.2</b>	<b>11.3</b>
October	42,024	49,353	53,459	60,437	67,988	75,375	87,099	13.1	12.5	10.9	15.6
November	52,181	59,803	61,005	70,588	81,430	87,488	97,726	15.7	15.4	7.4	11.7
December	53,822	60,542	62,776	75,177	86,328	92,195	99,103	19.8	14.8	6.8	7.5
<b>Total</b>	<b>527,745</b>	<b>591,628</b>	<b>645,235</b>	<b>716,584</b>	<b>836,377</b>	<b>917,800</b>	<b>1,061,034</b>	<b>11.1</b>	<b>16.7</b>	<b>9.7</b>	<b>15.6</b>



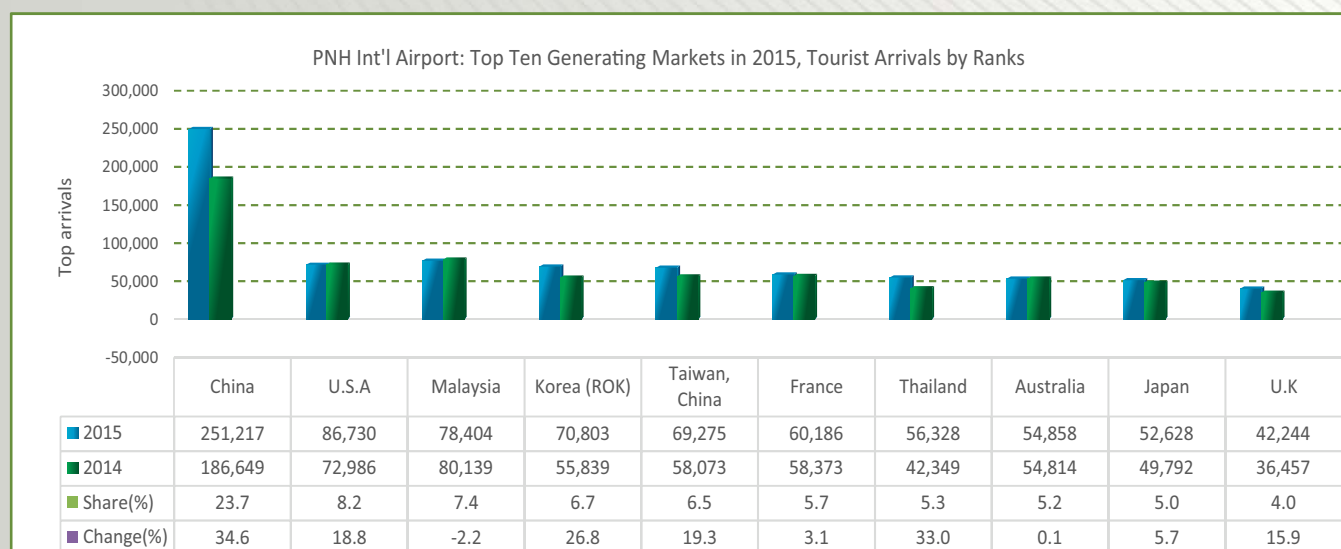


## International Tourist Arrivals to Phnom Penh International Airport by Country of Residence in 2015 (by Air Only)

Regions Country of Residence	2015												Total	Share (%) 2015*
	Jan	Feb	Mar	Apr	May	Jun	Jul	Aug	Sep	Oct	Nov	Dec		
<b>Grand Total</b>	<b>93,817</b>	<b>84,319</b>	<b>94,424</b>	<b>79,805</b>	<b>79,166</b>	<b>80,095</b>	<b>93,931</b>	<b>92,880</b>	<b>78,669</b>	<b>87,099</b>	<b>97,726</b>	<b>99,103</b>	<b>1,061,034</b>	<b>100.0</b>
<b>Asia and the Pacific</b>	<b>61,469</b>	<b>54,194</b>	<b>66,951</b>	<b>58,181</b>	<b>60,363</b>	<b>60,724</b>	<b>68,173</b>	<b>69,872</b>	<b>62,077</b>	<b>63,311</b>	<b>64,091</b>	<b>66,958</b>	<b>756,364</b>	<b>71.3</b>
<b>ASEAN (South-East Asia)</b>	<b>17,039</b>	<b>14,618</b>	<b>20,105</b>	<b>17,415</b>	<b>20,070</b>	<b>20,289</b>	<b>19,575</b>	<b>19,357</b>	<b>19,962</b>	<b>17,903</b>	<b>20,278</b>	<b>22,012</b>	<b>228,623</b>	<b>21.5</b>
Brunei Darussalam	35	26	47	35	48	22	74	44	35	42	49	56	513	0.0
Indonesia	844	891	1,045	1,016	930	835	1,081	1,080	904	1,013	1,026	1,148	11,813	1.1
Lao PDR	199	234	225	267	275	274	373	235	266	202	284		2,834	0.3
Malaysia	6,208	4,850	7,293	6,127	7,210	6,843	6,252	6,633	7,445	5,886	6,651	7,006	78,404	7.4
Myanmar	313	160	325	284	217	293	231	238	328	271	398	237	3,295	0.3
Philippines	689	637	655	741	814	634	704	792	674	843	730	675	8,588	0.8
Singapore	2,822	2,138	3,632	2,635	3,882	3,866	2,971	3,082	3,485	2,752	3,999	5,229	40,493	3.8
Thailand	4,001	3,880	4,745	4,102	4,592	5,254	4,856	4,771	4,653	4,940	5,142	5,392	56,328	5.3
Vietnam	1,928	1,802	2,138	2,208	2,102	2,268	3,033	2,482	2,172	1,954	1,999	2,269	26,355	2.5
<b>North-East Asia</b>	<b>35,919</b>	<b>34,012</b>	<b>40,062</b>	<b>34,650</b>	<b>34,924</b>	<b>34,223</b>	<b>41,103</b>	<b>44,016</b>	<b>35,788</b>	<b>38,767</b>	<b>35,895</b>	<b>34,804</b>	<b>444,163</b>	<b>41.9</b>
China	17,862	19,266	23,412	19,961	20,201	19,249	23,265	24,446	21,468	23,266	19,479	19,342	251,217	23.7
Hong Kong (China)									1				1	0.0
Japan	4,066	4,280	4,887	3,658	3,825	3,992	4,257	5,414	4,466	3,834	5,383	4,566	52,628	5.0
Korea (ROK)	7,922	5,400	5,144	4,962	4,992	5,383	7,439	7,836	4,790	5,924	5,605	5,406	70,803	6.7
Macau (China)	1	1	2	2	2	11	1	1	2	2	3	2	30	0.0
Mongolia	11	17	23	14	13	12	17	17	19	25	16	25	209	0.0
Taiwan (China)	6,057	5,048	6,594	6,053	5,891	5,576	6,124	6,302	5,042	5,716	5,409	5,463	69,275	6.5
<b>Southern Asia</b>	<b>1,559</b>	<b>1,076</b>	<b>1,483</b>	<b>1,363</b>	<b>1,381</b>	<b>1,396</b>	<b>1,702</b>	<b>1,734</b>	<b>1,683</b>	<b>1,646</b>	<b>1,693</b>	<b>1,889</b>	<b>18,605</b>	<b>1.8</b>
Afghanistan	6	2	2	4	7	10	7	4	3	1		12	58	0.0
Bangladesh	102	86	145	106	100	147	122	157	151	125	133	114	1,488	0.1
Bhutan	8	5	16	2	4	7	4	32	3	2	5	42	130	0.0
India	1,160	772	963	949	1,000	959	1,311	1,195	1,241	1,206	1,266	1,426	13,448	1.3
Nepal	94	64	148	88	76	68	99	88	65	68	65	87	1,010	0.1
Pakistan	71	71	84	87	89	116	79	141	95	101	121	103	1,158	0.1
Sri Lanka	118	76	125	127	105	89	80	117	125	143	103	105	1,313	0.1
<b>Oceania</b>	<b>6,893</b>	<b>4,411</b>	<b>5,253</b>	<b>4,711</b>	<b>3,937</b>	<b>4,744</b>	<b>5,708</b>	<b>4,673</b>	<b>4,591</b>	<b>4,933</b>	<b>6,137</b>	<b>8,157</b>	<b>64,148</b>	<b>6.0</b>
Australia	5,898	3,776	4,494	4,006	3,295	4,175	4,917	3,977	4,008	4,233	5,235	6,844	54,858	5.2
Fiji	13	7	7	6	12	6	13	11	14	22	6	9	126	0.0
New Zealand	982	628	752	699	630	563	778	685	569	678	896	1,304	9,164	0.9
Other Asia & the Pacific	59	77	48	42	51	72	85	92	53	62	88	96	825	0.1
<b>Europe</b>	<b>20,184</b>	<b>20,220</b>	<b>16,732</b>	<b>13,050</b>	<b>10,326</b>	<b>10,682</b>	<b>16,155</b>	<b>14,969</b>	<b>9,649</b>	<b>14,800</b>	<b>21,777</b>	<b>20,551</b>	<b>189,095</b>	<b>17.8</b>
<b>Northern Europe</b>	<b>6,185</b>	<b>5,779</b>	<b>5,778</b>	<b>4,276</b>	<b>3,612</b>	<b>3,734</b>	<b>4,449</b>	<b>3,760</b>	<b>3,224</b>	<b>4,782</b>	<b>6,191</b>	<b>6,144</b>	<b>57,914</b>	<b>5.5</b>
Denmark	377	327	362	188	163	162	242	150	173	205	261	307	2,917	0.3
Finland	344	248	234	114	211	88	45	105	92	141	247	368	2,237	0.2
Iceland	14	6	10	9	9	7	2	1	4	7	9	10	88	0.0
Ireland	259	247	251	190	175	219	269	213	179	227	265	260	2,754	0.3
Norway	291	313	332	173	120	190	181	77	131	260	291	364	2,723	0.3
Sweden	708	559	523	364	214	203	184	176	215	432	511	862	4,951	0.5
United Kingdom	4,192	4,079	4,066	3,238	2,720	2,865	3,526	3,038	2,430	3,510	4,607	3,973	42,244	4.0
<b>Western Europe</b>	<b>10,534</b>	<b>10,849</b>	<b>8,506</b>	<b>6,903</b>	<b>5,196</b>	<b>5,491</b>	<b>9,628</b>	<b>8,353</b>	<b>4,885</b>	<b>7,576</b>	<b>11,378</b>	<b>10,354</b>	<b>99,653</b>	<b>9.4</b>
Austria	284	280	234	117	88	125	232	163	121	148	260	277	2,329	0.2
Belgium	611	519	373	421	269	299	670	390	298	417	609	714	5,590	0.5
France	6,224	6,688	4,854	4,306	3,102	3,593	6,124	5,632	2,802	4,582	6,609	5,670	60,186	5.7
Germany	1,882	1,991	1,961	1,086	919	761	1,054	1,261	974	1,379	2,317	2,036	17,621	1.7
Luxembourg	20	19	12	15	9	9	10	14	8	9	17	25	167	0.0
Monaco	1	1				1			1	1	2	5	12	0.0
Netherlands	769	679	547	452	474	427	858	553	394	559	774	806	7,292	0.7
Switzerland	743	672	525	506	335	276	680	340	287	481	790	821	6,456	0.6
<b>Central / Eastern Europe</b>	<b>1,961</b>	<b>2,073</b>	<b>1,250</b>	<b>875</b>	<b>666</b>	<b>591</b>	<b>653</b>	<b>659</b>	<b>530</b>	<b>1,219</b>	<b>2,379</b>	<b>2,163</b>	<b>15,019</b>	<b>1.4</b>
Bulgaria	25	32	32	20	15	25	23	19	19	20	38	28	296	0.0
Czech Republic	94	93	103	47	34	37	26	32	39	63	132	110	810	0.1
Estonia	114	86	46	27	15	16	10	20	9	32	80	95	550	0.1
Hungary	66	61	43	23	29	33	30	37	26	88	55	40	531	0.1
Kazakhstan	63	63	41	32	42	42	58	42	29	32	63	83	590	0.1
Kyrgyzstan	6	6	5	1	2	2	2	8	3	3	4	4	46	0.0
Latvia	12	19	15	21	5	11	8	9	3	14	19	12	148	0.0
Lithuania	20	38	32	12	5	16	8	13	22	14	23	33	236	0.0
Poland	158	178	108	106	61	46	64	75	87	84	286	144	1,397	0.1
Romania	51	56	129	66	39	15	20	24	20	43	75	58	596	0.1
Russian Federation	1,126	1,144	528	400	320	257	316	306	217	703	1,479	1,414	8,210	0.8
Slovakia	67	66	54	48	23	29	16	21	9	29	34	30	426	0.0
Ukraine	142	215	99	57	71	46	38	34	42	73	74	102	993	0.1
Uzbekistan	17	16	15	15	5	16	34	19	5	21	17	10	190	0.0
<b>Southern Europe</b>	<b>1,420</b>	<b>1,472</b>	<b>1,126</b>	<b>948</b>	<b>809</b>	<b>815</b>	<b>1,375</b>	<b>2,132</b>	<b>978</b>	<b>1,179</b>	<b>1,742</b>	<b>1,809</b>	<b>15,805</b>	<b>1.5</b>
Croatia	19	24	22	12	8	11	19	16	11	13	20	20	195	0.0
Greece	37	53	26	36	24	17	18	22	18	16	42	48	357	0.0
Italy	830	682	549	471	364	306	461	1,077	347	521	887	1,085	7,580	0.7
Malta	14	13	13	21	5	8	17	9	12	33	14	6	165	0.0
Portugal	53	89	69	56	59	51	89	114	69	76	93	109	927	0.1
Serbia	27	21	21	10	9	9	9	6	9	14	6	16	157	0.0
Slovenia	24	23	18	15	19	27	36	11	24	42	57	47	343	0.0
Spain	241	321	296	226	205	258	628	736	325	364	418	366	4,384	0.4
Turkey	175	246	112	101	116	128	98	141	163	100	205	112	1,697	0.2
Other Europe	84	47	72	48	43	51	50	65	32	44	87	81	704	0.1

## International Tourist Arrivals to Phnom Penh International Airport by Country of Residence in 2015 (by Air Only)

Regions Country of Residence	2015												Total	Share (%) 2015*
	Jan	Feb	Mar	Apr	May	Jun	Jul	Aug	Sep	Oct	Nov	Dec		
<b>Grand Total</b>	<b>93,817</b>	<b>84,319</b>	<b>94,424</b>	<b>79,805</b>	<b>79,166</b>	<b>80,095</b>	<b>93,931</b>	<b>92,880</b>	<b>78,669</b>	<b>87,099</b>	<b>97,726</b>	<b>99,103</b>	<b>1,061,034</b>	<b>100.0</b>
<b>Americas</b>	<b>11,518</b>	<b>9,283</b>	<b>10,193</b>	<b>8,102</b>	<b>7,955</b>	<b>8,185</b>	<b>9,030</b>	<b>7,469</b>	<b>6,401</b>	<b>8,417</b>	<b>11,205</b>	<b>10,793</b>	<b>108,551</b>	<b>10.2</b>
<b>North America</b>	<b>11,087</b>	<b>8,840</b>	<b>9,925</b>	<b>7,858</b>	<b>7,681</b>	<b>7,970</b>	<b>8,736</b>	<b>7,226</b>	<b>6,174</b>	<b>8,165</b>	<b>10,894</b>	<b>10,408</b>	<b>104,964</b>	<b>9.9</b>
Canada	2,208	1,883	1,745	1,337	1,251	1,010	1,340	980	887	1,340	2,007	1,666	17,654	1.7
Mexico	44	41	53	27	39	54	74	37	60	46	47	58	580	0.1
United States	8,835	6,916	8,127	6,494	6,391	6,906	7,322	6,209	5,227	6,779	8,840	8,684	86,730	8.2
<b>Central America</b>	<b>13</b>	<b>9</b>	<b>7</b>	<b>8</b>	<b>17</b>	<b>8</b>	<b>15</b>	<b>8</b>	<b>12</b>	<b>13</b>	<b>8</b>	<b>9</b>	<b>127</b>	<b>0.0</b>
Costa Rica	6	7	4	2	2	5	7	3	5	7	5	3	56	0.0
Honduras	5		1	4	8	1	2	2	3	1	1	2	30	0.0
Jamaica	2	2	2	2	7	2	6	3	4	5	2	4	41	0.0
<b>South America</b>	<b>366</b>	<b>402</b>	<b>213</b>	<b>208</b>	<b>232</b>	<b>175</b>	<b>237</b>	<b>196</b>	<b>194</b>	<b>210</b>	<b>226</b>	<b>308</b>	<b>2,967</b>	<b>0.3</b>
Argentina	73	72	44	31	15	16	19	28	26	26	31	49	430	0.0
Brazil	164	150	76	66	94	74	112	61	66	95	74	143	1,175	0.1
Chile	47	74	22	24	25	16	17	24	24	32	26	37	368	0.0
Colombia	49	69	41	50	61	46	64	44	44	26	51	48	593	0.1
Ecuador	13	9	4	10	3	5	3	8	2	8	9	17	91	0.0
Peru	9	12	6	11	9	7	11	15	13	17	20	6	136	0.0
Uruguay	6	5	12	4	21	7	1	10	7	3	8	4	88	0.0
Venezuela	5	11	8	12	4	4	10	6	12	3	7	4	86	0.0
Other America	52	32	48	28	25	32	42	39	21	29	77	68	493	0.0
<b>Africa</b>	<b>307</b>	<b>257</b>	<b>281</b>	<b>239</b>	<b>295</b>	<b>270</b>	<b>300</b>	<b>318</b>	<b>243</b>	<b>294</b>	<b>302</b>	<b>415</b>	<b>3,521</b>	<b>0.3</b>
<b>North Africa</b>	<b>32</b>	<b>49</b>	<b>23</b>	<b>20</b>	<b>39</b>	<b>27</b>	<b>28</b>	<b>38</b>	<b>15</b>	<b>31</b>	<b>35</b>	<b>51</b>	<b>388</b>	<b>0.0</b>
Morocco	21	33	16	16	16	11	21	21	10	17	19	29	230	0.0
Sudan	8	9	3	2	16	13	4	11	3	2	6	3	80	0.0
Tunisia	3	7	4	2	7	3	3	6	2	12	10	19	78	0.0
<b>Subsaharan Africa</b>	<b>251</b>	<b>193</b>	<b>242</b>	<b>208</b>	<b>242</b>	<b>226</b>	<b>254</b>	<b>260</b>	<b>216</b>	<b>246</b>	<b>235</b>	<b>335</b>	<b>2,908</b>	<b>0.3</b>
Cameroon	5	5	4	3	3	2	12	11	5	6	5	11	72	0.0
Congo	1	1	4	5	4	1	8	9	7	9	7	7	63	0.0
Ghana	4	9	3	2	2	5	7	6	4	4	5	3	54	0.0
Kenya	8	7	13	15	11	11	11	17	12	15	19	21	160	0.0
Liberia	3	1	1	1	5	4	5	6	1				27	0.0
Nigeria	94	64	73	70	85	66	60	86	67	70	84	68	887	0.1
South Africa	123	96	131	104	106	118	127	110	107	120	107	200	1,449	0.1
Tanzania	4	3	4	1	2	8	3	8	4	6	1	9	53	0.0
Uganda	2	4	3	1	12	9	17	3	5	10	1	8	75	0.0
Zimbabwe	7	3	6	6	12	2	4	4	4	6	6	8	68	0.0
Other Africa	24	15	16	11	14	17	18	20	12	17	32	29	225	0.0
<b>Middle East</b>	<b>339</b>	<b>365</b>	<b>267</b>	<b>233</b>	<b>227</b>	<b>234</b>	<b>273</b>	<b>252</b>	<b>299</b>	<b>277</b>	<b>351</b>	<b>386</b>	<b>3,503</b>	<b>0.3</b>
Egypt	25	28	16	24	27	21	31	17	26	23	18	28	284	0.0
Iran	26	27	23	8	13	15	37	10	7	15	14	28	223	0.0
Iraq	7	3	9	6	6	8	11	5	5	13	9	23	105	0.0
Israel	148	195	136	100	77	83	100	104	134	108	173	115	1,473	0.1
Jordan	13	14	16	13	19	17	9	19	18	20	10	21	189	0.0
Kuwait	43	9	10	15	11	7	9	13	9	14	5	16	161	0.0
Oman	4	19	16	4	8	8	3	5	3	1	2	1	74	0.0
Palestine	3	1	5	2	3	3	2	6	6	2	8	5	46	0.0
Qatar	26	13	7	3	2	2	3	2	1			3	62	0.0
Saudi Arabia	15	22	15	31	18	18	23	26	11	8	10	17	214	0.0
Syria	4	9	5	10	20	20	11	5	47	14	6	18	169	0.0
United Arab Emirates		5		3	1	4	6	10	5	5	5	4	48	0.0
Yemen	8	15	2	6	14	19	13	14	23	41	64	83	302	0.0
Other Middle East	17	5	7	8	8	9	15	16	4	13	27	24	153	0.0

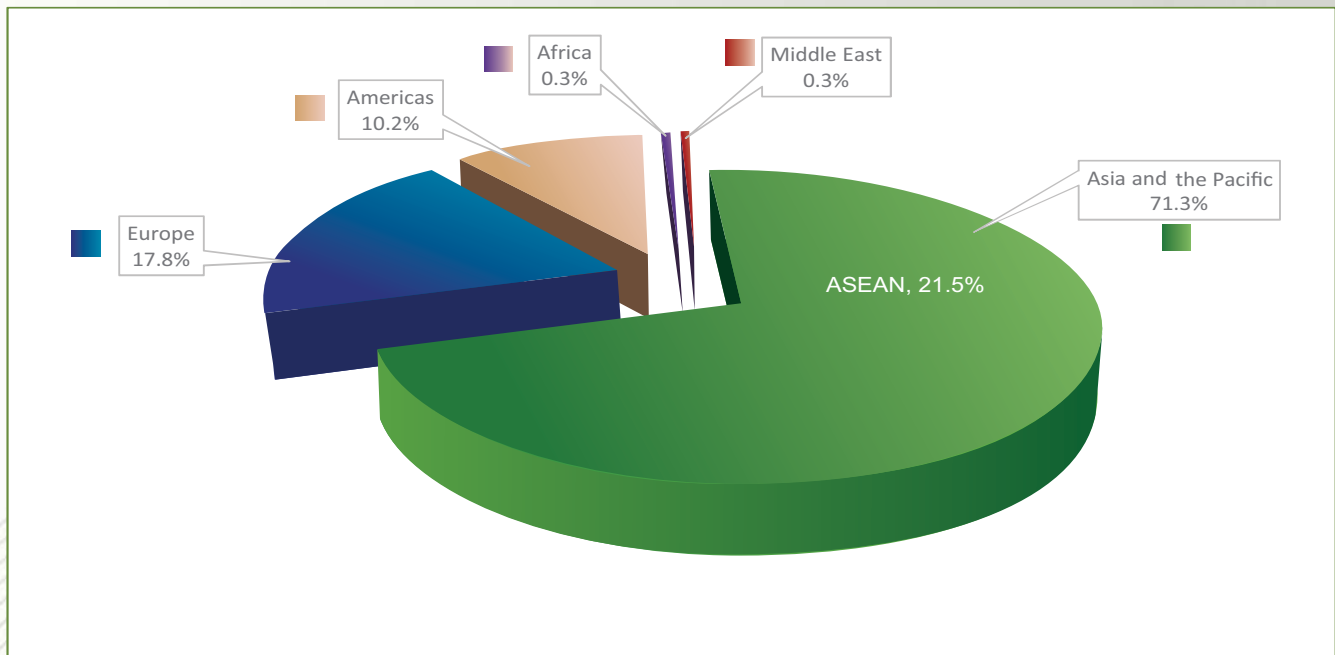




### Int'l Tourist Arrivals to Phnom Penh International Airport (PNH) by Regions in 2015

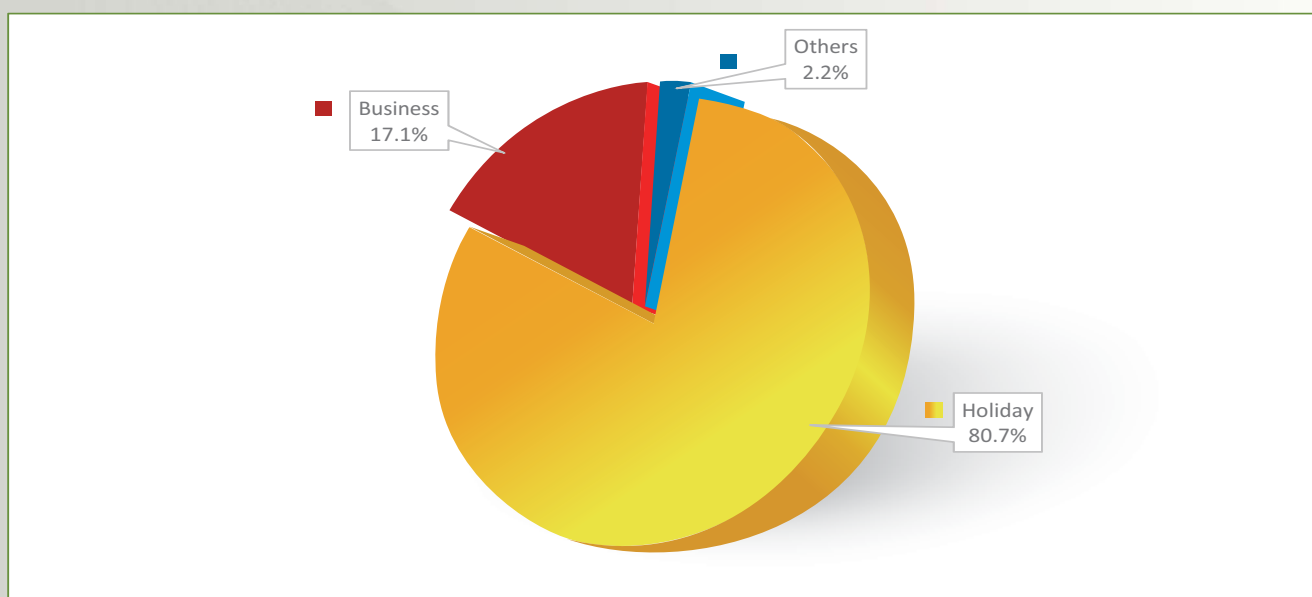
Months	Asia and the Pacific		Europe	Americas	Africa	Middle East	Total
		ASEAN					
<b>Q1</b>	<b>182,614</b>	<b>51,762</b>	<b>57,136</b>	<b>30,994</b>	<b>845</b>	<b>971</b>	<b>272,560</b>
January	61,469	17,039	20,184	11,518	307	339	93,817
February	54,194	14,618	20,220	9,283	257	365	84,319
March	66,951	20,105	16,732	10,193	281	267	94,424
<b>Q2</b>	<b>179,268</b>	<b>57,774</b>	<b>34,058</b>	<b>24,242</b>	<b>804</b>	<b>694</b>	<b>239,066</b>
April	58,181	17,415	13,050	8,102	239	233	79,805
May	60,363	20,070	10,326	7,955	295	227	79,166
June	60,724	20,289	10,682	8,185	270	234	80,095
<b>Q3</b>	<b>200,122</b>	<b>58,894</b>	<b>40,773</b>	<b>22,900</b>	<b>861</b>	<b>824</b>	<b>265,480</b>
July	68,173	19,575	16,155	9,030	300	273	93,931
August	69,872	19,357	14,969	7,469	318	252	92,880
September	62,077	19,962	9,649	6,401	243	299	78,669
<b>Q4</b>	<b>194,360</b>	<b>60,193</b>	<b>57,128</b>	<b>30,415</b>	<b>1,011</b>	<b>1,014</b>	<b>283,928</b>
October	63,311	17,903	14,800	8,417	294	277	87,099
November	64,091	20,278	21,777	11,205	302	351	97,726
December	66,958	22,012	20,551	10,793	415	386	99,103
<b>Total</b>	<b>756,364</b>	<b>228,623</b>	<b>189,095</b>	<b>108,551</b>	<b>3,521</b>	<b>3,503</b>	<b>1,061,034</b>
share (%)	71.3%	21.5%	17.8%	10.2%	0.3%	0.3%	100.0%

Note: 10 countries of ASEAN were included in Asia and the Pacific.



### International Tourist Arrivals to Phnom Penh International Airport by Purposes of Visit in 2009 - 2015

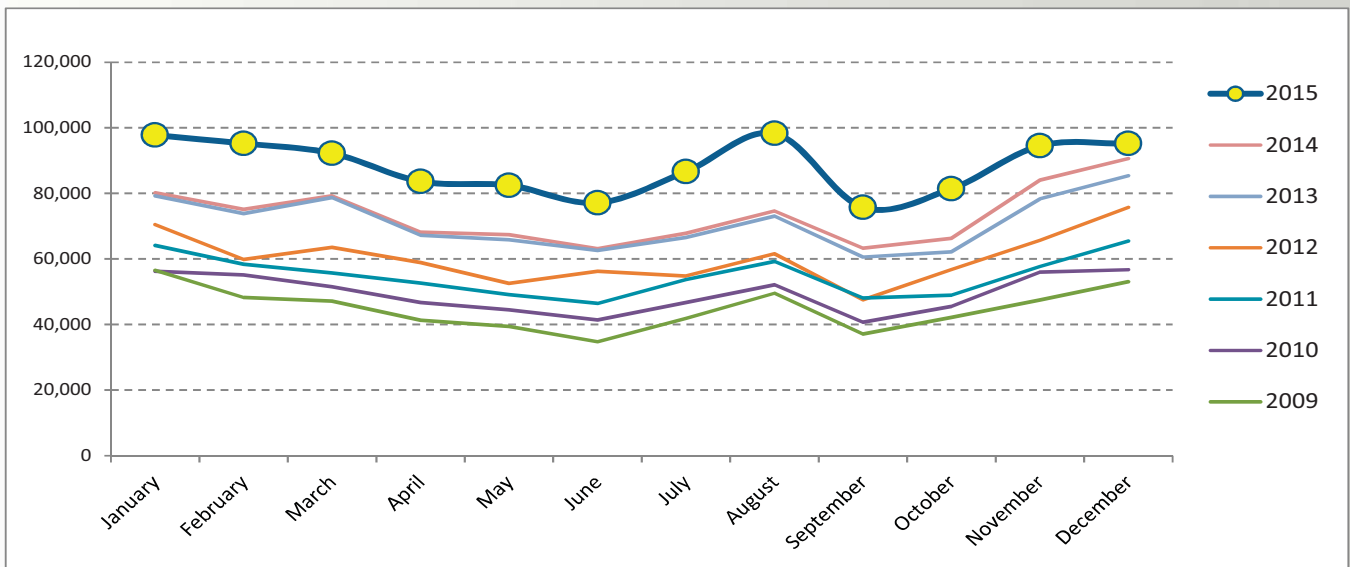
Purposes of Visit	Int'l tourist arrivals							Change (%)		
	2009	2010	2011	2012	2013	2014	2015	13/12	14/13	2015*/14
<b>Total</b>	<b>527,745</b>	<b>591,628</b>	<b>645,233</b>	<b>716,584</b>	<b>836,377</b>	<b>917,800</b>	<b>1,061,034</b>	<b>16.7</b>	<b>9.7</b>	<b>15.6</b>
Holiday	422,896	477,466	533,776	532,426	693,535	754,026	856,181	30.3	8.7	13.5
Business	81,881	90,302	91,223	107,422	122,773	153,332	181,170	14.3	24.9	18.2
Others	22,968	23,860	20,234	76,736	20,069	10,442	23,683	-73.8	-48.0	126.8
<b>Q1</b>	<b>141,496</b>	<b>158,979</b>	<b>170,558</b>	<b>187,408</b>	<b>218,912</b>	<b>245,071</b>	<b>272,560</b>	<b>16.8</b>	<b>11.9</b>	<b>11.2</b>
Holiday	115,850	129,485	142,249	147,940	182,957	200,440	224,834	23.7	9.6	12.2
Business	20,343	23,563	23,277	25,432	31,082	41,132	40,867	22.2	32.3	-0.6
Others	5,303	5,931	5,032	14,036	4,873	3,499	6,859	-65.3	-28.2	96.0
<b>Q2</b>	<b>112,410</b>	<b>126,012</b>	<b>139,906</b>	<b>155,878</b>	<b>187,758</b>	<b>200,182</b>	<b>239,066</b>	<b>20.5</b>	<b>6.6</b>	<b>19.4</b>
Holiday	86,273	97,701	112,361	111,187	151,740	161,187	189,202	36.5	6.2	17.4
Business	20,356	22,184	22,680	25,356	31,060	36,056	45,131	22.5	16.1	25.2
Others	5,781	6,127	4,865	19,335	4,958	2,939	4,733	-74.4	-40.7	61.0
<b>Q3</b>	<b>125,812</b>	<b>136,939</b>	<b>157,529</b>	<b>167,096</b>	<b>193,961</b>	<b>217,489</b>	<b>265,480</b>	<b>16.1</b>	<b>12.1</b>	<b>22.1</b>
Holiday	98,668	109,381	128,916	120,170	158,673	179,270	212,618	32.0	13.0	18.6
Business	21,084	21,635	23,380	27,198	29,990	35,908	47,617	10.3	19.7	32.6
Others	6,060	5,923	5,233	19,728	5,298	2,311	5,245	-73.1	-56.4	127.0
<b>Q4</b>	<b>148,027</b>	<b>169,698</b>	<b>177,240</b>	<b>206,202</b>	<b>235,746</b>	<b>255,058</b>	<b>283,928</b>	<b>14.3</b>	<b>8.2</b>	<b>11.3</b>
Holiday	122,105	140,899	150,250	153,129	200,165	213,129	229,527	30.7	6.5	7.7
Business	20,098	22,920	21,886	29,436	30,641	40,236	47,555	4.1	31.3	18.2
Others	5,824	5,879	5,104	23,637	4,940	1,693	6,846	-79.1	-65.7	304.4





### Int'l Tourist Departures from Phnom Penh International Airport by Months in 2009 - 2015

Months	Int'l Tourist Departures							Change (%)		
	2009	2010	2011	2012	2013	2014	2015	13/12	14/13	2015*/14
<b>Q1</b>	<b>151,938</b>	<b>162,931</b>	<b>178,353</b>	<b>193,993</b>	<b>231,907</b>	<b>234,594</b>	<b>285,257</b>	<b>19.5</b>	<b>1.2</b>	<b>21.6</b>
January	56,536	56,288	64,141	70,533	79,240	80,190	97,780	12.3	1.2	21.9
February	48,257	55,117	58,444	59,870	73,885	75,128	95,250	23.4	1.7	26.8
March	47,145	51,526	55,768	63,590	78,782	79,276	92,227	23.9	0.6	16.3
<b>Q2</b>	<b>115,543</b>	<b>132,678</b>	<b>148,240</b>	<b>167,732</b>	<b>195,706</b>	<b>198,771</b>	<b>243,248</b>	<b>16.7</b>	<b>1.6</b>	<b>22.4</b>
April	41,362	46,771	52,650	58,895	67,214	68,184	83,651	14.1	1.4	22.7
May	39,416	44,500	49,130	52,543	65,861	67,435	82,458	25.3	2.4	22.3
June	34,765	41,407	46,460	56,294	62,631	63,152	77,139	11.3	0.8	22.1
<b>Q3</b>	<b>128,455</b>	<b>139,581</b>	<b>161,037</b>	<b>163,927</b>	<b>200,275</b>	<b>205,800</b>	<b>260,703</b>	<b>22.2</b>	<b>2.8</b>	<b>26.7</b>
July	41,831	46,736	53,686	54,794	66,601	67,864	86,639	21.5	1.9	27.7
August	49,540	52,122	59,221	61,592	73,082	74,643	98,306	18.7	2.1	31.7
September	37,084	40,723	48,130	47,541	60,592	63,293	75,758	27.5	4.5	19.7
<b>Q4</b>	<b>142,702</b>	<b>158,314</b>	<b>172,192</b>	<b>198,206</b>	<b>225,834</b>	<b>241,036</b>	<b>271,166</b>	<b>13.9</b>	<b>6.7</b>	<b>12.5</b>
October	42,152	45,539	48,973	56,773	62,155	66,291	81,420	9.5	6.7	22.8
November	47,484	56,030	57,721	65,685	78,275	84,093	94,521	19.2	7.4	12.4
December	53,066	56,745	65,498	75,748	85,404	90,652	95,225	12.7	6.1	5.0
<b>Total</b>	<b>538,638</b>	<b>593,504</b>	<b>659,822</b>	<b>723,858</b>	<b>853,722</b>	<b>880,201</b>	<b>1,060,374</b>	<b>17.9</b>	<b>3.1</b>	<b>20.5</b>



## SECTION II

# SIEM REAP INTERNATIONAL AIRPORT







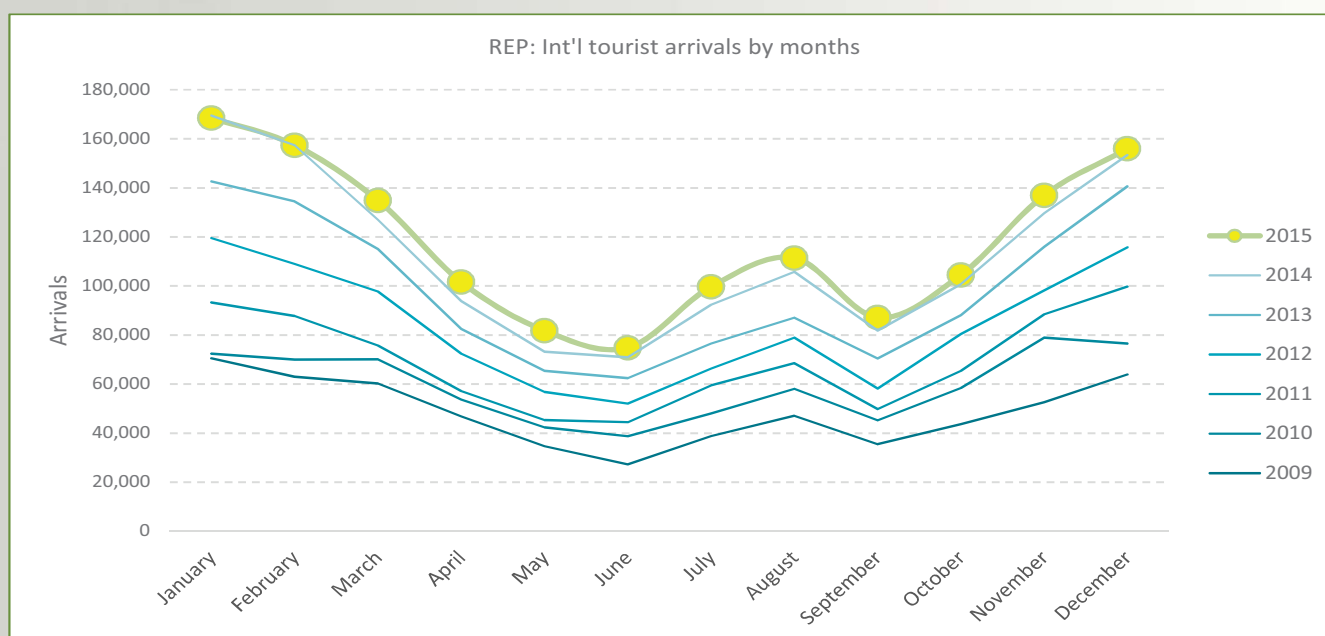
Photo by: Chak Vorleak



### International Tourist Arrivals to Siem Reap International Airport (REP) by Months in 2009 - 2015

(by Air only)

Months	2009	2010	2011	2012	2013	2014	2015	Change (%)			
								2012/11	2013/12	2014/13	2015*/14
<b>Q1</b>	<b>193,717</b>	<b>212,527</b>	<b>256,871</b>	<b>326,348</b>	<b>392,248</b>	<b>453,898</b>	<b>460,908</b>	<b>27.0</b>	<b>20.2</b>	<b>15.7</b>	<b>1.5</b>
January	70,489	72,411	93,276	119,543	142,661	169,494	168,539	28.2	19.3	18.8	-0.6
February	62,994	70,028	87,806	109,026	134,465	157,439	157,436	24.2	23.3	17.1	0.0
March	60,234	70,088	75,789	97,779	115,122	126,965	134,933	29.0	17.7	10.3	6.3
<b>Q2</b>	<b>108,811</b>	<b>134,855</b>	<b>147,038</b>	<b>181,245</b>	<b>210,297</b>	<b>238,033</b>	<b>258,363</b>	<b>23.3</b>	<b>16.0</b>	<b>13.2</b>	<b>8.5</b>
April	46,802	53,678	57,187	72,399	82,489	93,885	101,669	26.6	13.9	13.8	8.3
May	34,735	42,411	45,395	56,762	65,375	73,215	81,837	25.0	15.2	12.0	11.8
June	27,274	38,766	44,456	52,084	62,433	70,933	74,857	17.2	19.9	13.6	5.5
<b>Q3</b>	<b>121,361</b>	<b>151,315</b>	<b>177,756</b>	<b>203,445</b>	<b>234,051</b>	<b>279,983</b>	<b>298,287</b>	<b>14.5</b>	<b>15.0</b>	<b>19.6</b>	<b>6.5</b>
July	38,761	48,038	59,467	66,348	76,571	92,371	99,708	11.6	15.4	20.6	7.9
August	47,121	58,089	68,484	78,944	87,040	105,762	111,396	15.3	10.3	21.5	5.3
September	35,479	45,188	49,805	58,153	70,440	81,850	87,183	16.8	21.1	16.2	6.5
<b>Q4</b>	<b>160,095</b>	<b>213,975</b>	<b>253,507</b>	<b>294,461</b>	<b>344,685</b>	<b>383,779</b>	<b>397,409</b>	<b>16.2</b>	<b>17.1</b>	<b>11.3</b>	<b>3.6</b>
October	43,647	58,448	65,363	80,471	88,072	100,721	104,503	23.1	9.4	14.4	3.8
November	52,545	78,947	88,410	98,245	115,979	129,637	136,952	11.1	18.1	11.8	5.6
December	63,903	76,580	99,734	115,745	140,634	153,421	155,954	16.1	21.5	9.1	1.7
<b>Total</b>	<b>583,984</b>	<b>712,672</b>	<b>835,172</b>	<b>1,005,499</b>	<b>1,181,281</b>	<b>1,355,693</b>	<b>1,414,967</b>	<b>20.4</b>	<b>17.5</b>	<b>14.8</b>	<b>4.4</b>





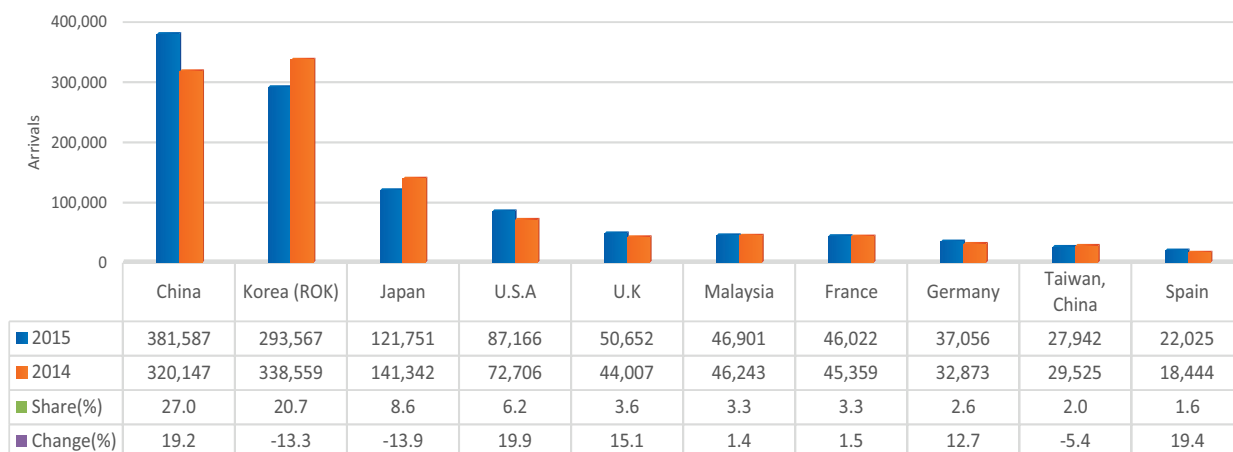


## International Tourist Arrivals to Siem Reap International Airport by Country of Residence in 2015

(by Air Only)

Regions Country of Residence	2015												Total	Share (%) 2015*	
	Jan	Feb	Mar	Apr	May	Jun	Jul	Aug	Sep	Oct	Nov	Dec			
<b>Grand Total</b>	<b>168,539</b>	<b>157,436</b>	<b>134,933</b>	<b>101,669</b>	<b>81,837</b>	<b>74,857</b>	<b>99,708</b>	<b>111,396</b>	<b>87,183</b>	<b>104,503</b>	<b>136,952</b>	<b>155,954</b>	<b>1,414,967</b>	<b>100.0</b>	
<b>Americas</b>	<b>16,049</b>	<b>13,623</b>	<b>12,955</b>	<b>9,626</b>	<b>8,040</b>	<b>7,716</b>	<b>9,121</b>	<b>6,674</b>	<b>6,203</b>	<b>10,464</b>	<b>15,078</b>	<b>16,920</b>	<b>132,469</b>	<b>9.4</b>	
<b>North America</b>	<b>13,246</b>	<b>11,153</b>	<b>10,772</b>	<b>7,831</b>	<b>6,729</b>	<b>6,843</b>	<b>8,047</b>	<b>5,959</b>	<b>5,406</b>	<b>8,998</b>	<b>12,959</b>	<b>15,032</b>	<b>112,975</b>	<b>8.0</b>	
Canada	2,753	2,495	2,390	1,421	1,311	965	1,213	827	753	1,601	2,451	2,265	20,445	1.4	
Mexico	365	260	437	487	461	405	703	216	411	451	524	644	5,364	0.4	
United States	10,128	8,398	7,945	5,923	4,957	5,473	6,131	4,916	4,242	6,946	9,984	12,123	87,166	6.2	
<b>Central America</b>	<b>54</b>	<b>29</b>	<b>13</b>	<b>17</b>	<b>15</b>	<b>22</b>	<b>23</b>	<b>14</b>	<b>18</b>	<b>22</b>	<b>20</b>	<b>57</b>	<b>304</b>	<b>0.0</b>	
Costa Rica	50	28	12	17	13	20	20	11	16	19	17	53	276	0.0	
Honduras	1	1			2	1	1	1		2	1	1	11	0.0	
Jamaica	3		1			1	2	2	2	1	2	3	17	0.0	
<b>South America</b>	<b>2,704</b>	<b>2,363</b>	<b>2,119</b>	<b>1,746</b>	<b>1,278</b>	<b>835</b>	<b>1,006</b>	<b>663</b>	<b>763</b>	<b>1,413</b>	<b>2,054</b>	<b>1,791</b>	<b>18,735</b>	<b>1.3</b>	
Argentina	746	614	955	581	274	146	230	182	164	301	619	513	5,325	0.4	
Brazil	1,343	985	688	591	385	337	339	155	247	492	909	715	7,186	0.5	
Chile	258	537	272	307	267	116	146	133	170	225	200	239	2,870	0.2	
Colombia	208	96	120	127	140	138	174	86	93	178	152	164	1,676	0.1	
Ecuador	38	43	9	33	21	22	18	21	19	22	31	29	306	0.0	
Peru	38	51	35	34	56	36	51	54	33	129	88	55	660	0.0	
Uruguay	59	21	26	48	111	17	6	9	16	51	34	25	423	0.0	
Venezuela	14	16	14	25	24	23	42	23	21	15	21	51	289	0.0	
Other America	45	78	51	32	18	16	45	38	16	31	45	40	455	0.0	
<b>Africa</b>	<b>237</b>	<b>198</b>	<b>233</b>	<b>254</b>	<b>145</b>	<b>207</b>	<b>185</b>	<b>213</b>	<b>184</b>	<b>206</b>	<b>204</b>	<b>457</b>	<b>2,723</b>	<b>0.2</b>	
<b>North Africa</b>	<b>29</b>	<b>35</b>	<b>19</b>	<b>18</b>	<b>36</b>	<b>12</b>	<b>11</b>	<b>50</b>	<b>20</b>	<b>13</b>	<b>23</b>	<b>23</b>	<b>289</b>	<b>0.0</b>	
Morocco	18	15	14	15	24	10	8	42	12	6	19	17	200	0.0	
Sudan		14		3	1		2	3	2	4			29	0.0	
Tunisia	11	6	5		11	2	1	5	6	3	4	6	60	0.0	
<b>Subsaharan Africa</b>	<b>181</b>	<b>151</b>	<b>204</b>	<b>224</b>	<b>102</b>	<b>183</b>	<b>158</b>	<b>127</b>	<b>145</b>	<b>165</b>	<b>147</b>	<b>395</b>	<b>2,182</b>	<b>0.2</b>	
Cameroon		5	1	1	1					1			9	0.0	
Congo		3	4						1				8	0.0	
Ghana	1		3	1	1	4	3	1	2	7		1	24	0.0	
Kenya	5	12	39	4	6	11	13	4	6	5	8	26	139	0.0	
Liberia													0	0.0	
Nigeria	4	8	7	4	6	12	11	8	13	14	9	7	103	0.0	
South Africa	167	122	147	208	87	146	125	108	116	134	125	360	1,845	0.1	
Tanzania	1		1	4	1	1	2	2	4	1	2	1	20	0.0	
Uganda			1			5	2	1	1	2	3		15	0.0	
Zimbabwe	3	1	1	2		4	2	3	2	1			19	0.0	
Other Africa	27	12	10	12	7	12	16	36	19	28	34	39	252	0.0	
<b>Middle East</b>	<b>435</b>	<b>394</b>	<b>341</b>	<b>255</b>	<b>187</b>	<b>92</b>	<b>205</b>	<b>260</b>	<b>444</b>	<b>346</b>	<b>428</b>	<b>563</b>	<b>3,950</b>	<b>0.3</b>	
Egypt	35	10	8	33	6	8	1	13	12	8	14	32	180	0.0	
Iran	24	11	61	8	4	5	21	8	9	13	19	51	234	0.0	
Iraq		2	1	4	2		4	2	12	1	6	1	35	0.0	
Israel	343	319	229	186	141	47	144	197	344	269	308	420	2,947	0.2	
Jordan	5	11	21	5	5	18	9	2	5	4	6	4	95	0.0	
Kuwait	2		1		4		3	5	3	1	2	6	27	0.0	
Oman	2	10	5			1	3	5	2	2	10	2	42	0.0	
Palestine				2	3	1		1	1	1	2	1	12	0.0	
Qatar	1	1			1				3	1		1	8	0.0	
Saudi Arabia	5	14	2	3	4	1		4	1	1	10	1	46	0.0	
Syria	1	1	2	4	1	2	6	8	10	9	5	5	54	0.0	
United Arab Emirates		1			3			4		4			2	14	0.0
Yemen	3	1		2	8	5	5	3	35	18	17	17	114	0.0	
Other Middle East	14	13	11	8	5	4	9	8	7	14	29	20	142	0.0	

REP Int'l Airport: Top Ten Generating Markets in 2015, Tourist Arrivals by Ranks

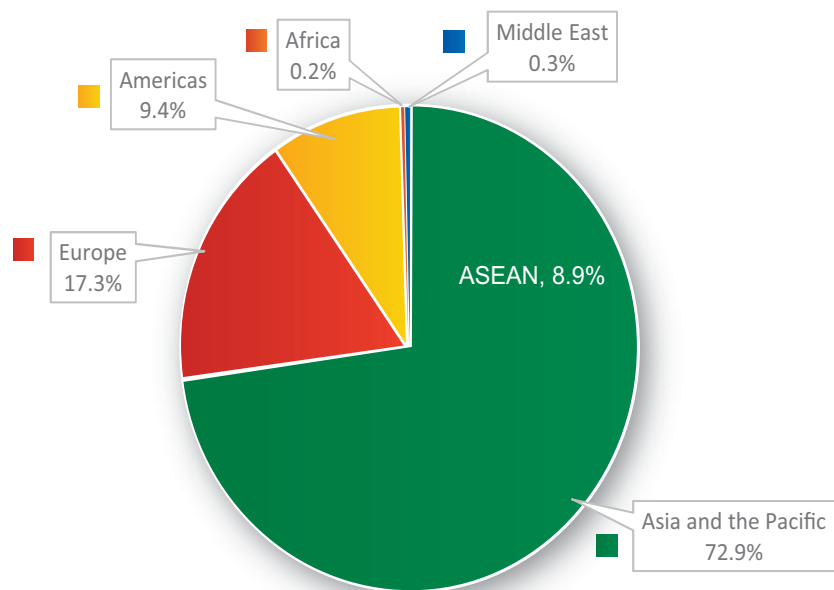




## International Tourist arrivals to Siem Reap International Airport by Regions in 2015

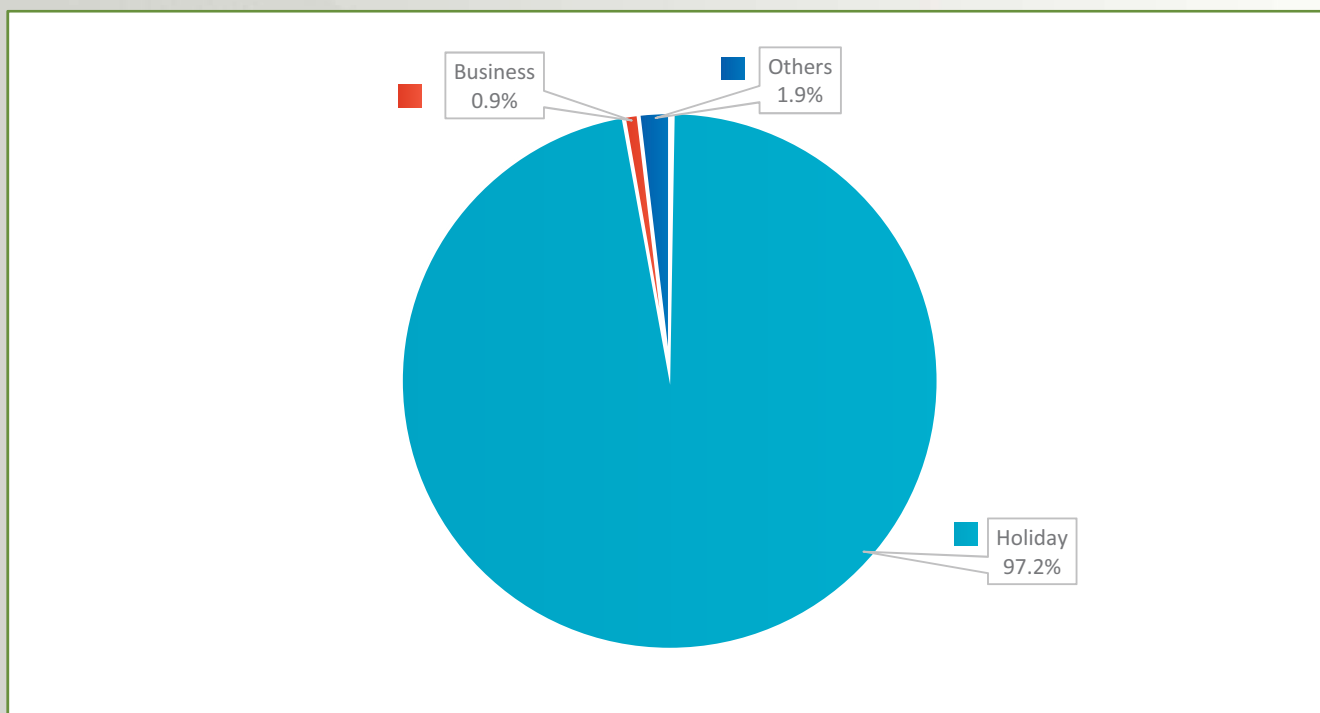
Months	Asia and the Pacific		Europe	Americas	Africa	Middle East	Total
		ASEAN					
<b>Q1</b>	<b>338,021</b>	<b>26,341</b>	<b>78,422</b>	<b>42,627</b>	<b>668</b>	<b>1,170</b>	<b>460,908</b>
January	124,373	9,095	27,445	16,049	237	435	168,539
February	116,864	7,705	26,357	13,623	198	394	157,436
March	96,784	9,541	24,620	12,955	233	341	134,933
<b>Q2</b>	<b>194,978</b>	<b>30,874</b>	<b>36,863</b>	<b>25,382</b>	<b>606</b>	<b>534</b>	<b>258,363</b>
April	74,760	10,040	16,774	9,626	254	255	101,669
May	62,656	10,072	10,809	8,040	145	187	81,837
June	57,562	10,762	9,280	7,716	207	92	74,857
<b>Q3</b>	<b>223,568</b>	<b>31,414</b>	<b>51,230</b>	<b>21,998</b>	<b>582</b>	<b>909</b>	<b>298,287</b>
July	72,317	10,371	17,880	9,121	185	205	99,708
August	81,863	10,768	22,386	6,674	213	260	111,396
September	69,388	10,275	10,964	6,203	184	444	87,183
<b>Q4</b>	<b>275,060</b>	<b>36,836</b>	<b>77,683</b>	<b>42,462</b>	<b>867</b>	<b>1,337</b>	<b>397,409</b>
October	74,956	10,197	18,531	10,464	206	346	104,503
November	90,811	13,054	30,431	15,078	204	428	136,952
December	109,293	13,585	28,721	16,920	457	563	155,954
<b>Total</b>	<b>1,031,627</b>	<b>125,465</b>	<b>244,198</b>	<b>132,469</b>	<b>2,723</b>	<b>3,950</b>	<b>1,414,967</b>
share (%)	72.9%	8.9%	17.3%	9.4%	0.2%	0.3%	100.0%

Note: 10 countries of ASEAN were included in Asia and the Pacific.



### International Tourist Arrivals to Siem Reap International Airport by Purposes of Visit in 2009 - 2015

Purposes of Visit	Int'l tourist arrivals							Change (%)		
	2009	2010	2011	2012	2013	2014	2015	13/12	14/13	2015*/14
<b>Total</b>	<b>583,984</b>	<b>712,672</b>	<b>835,172</b>	<b>1,005,499</b>	<b>1,181,281</b>	<b>1,355,693</b>	<b>1,414,967</b>	<b>17.5</b>	<b>14.8</b>	<b>4.4</b>
Holiday	574,571	704,254	826,441	983,389	1,170,158	1,332,689	1,375,949	19.0	13.9	3.2
Business	4,720	4,658	5,316	6,929	7,385	13,840	12,624	6.6	87.4	-8.8
Others	4,693	3,760	3,415	15,181	3,738	9,164	26,394	-75.4	145.2	188.0
<b>Q1</b>	<b>193,717</b>	<b>212,527</b>	<b>256,871</b>	<b>326,348</b>	<b>392,248</b>	<b>453,898</b>	<b>460,908</b>	<b>20.2</b>	<b>15.7</b>	<b>1.5</b>
Holiday	191,123	210,483	254,826	322,604	389,432	450,004	454,127	20.7	15.6	0.9
Business	1,533	1,111	1,296	1,672	1,959	2,380	2,300	17.2	21.5	-3.4
Others	1,061	933	749	2,072	857	1,514	4,481	-58.6	76.7	196.0
<b>Q2</b>	<b>108,811</b>	<b>134,855</b>	<b>147,038</b>	<b>181,245</b>	<b>210,297</b>	<b>238,033</b>	<b>258,363</b>	<b>16.0</b>	<b>13.2</b>	<b>8.5</b>
Holiday	106,707	132,877	144,934	176,445	207,738	232,845	245,054	17.7	12.1	5.2
Business	1,079	1,222	1,187	1,682	1,719	3,265	4,683	2.2	89.9	43.4
Others	1,025	756	917	3,118	840	1,923	8,626	-73.1	128.9	348.6
<b>Q3</b>	<b>121,361</b>	<b>151,315</b>	<b>177,756</b>	<b>203,445</b>	<b>234,051</b>	<b>279,983</b>	<b>298,287</b>	<b>15.0</b>	<b>19.6</b>	<b>6.5</b>
Holiday	119,398	149,214	175,669	197,682	231,376	273,682	292,352	17.0	18.3	6.8
Business	978	1,123	1,308	1,729	1,864	3,689	2,430	7.8	97.9	-34.1
Others	985	978	779	4,034	811	2,612	3,505	-79.9	222.1	34.2
<b>Q4</b>	<b>160,095</b>	<b>213,975</b>	<b>253,507</b>	<b>294,461</b>	<b>344,685</b>	<b>383,779</b>	<b>397,409</b>	<b>17.1</b>	<b>11.3</b>	<b>3.6</b>
Holiday	157,343	211,680	251,012	286,658	341,612	376,158	384,416	19.2	10.1	2.2
Business	1,130	1,202	1,525	1,846	1,843	4,506	3,211	-0.2	144.5	-28.7
Others	1,622	1,093	970	5,957	1,230	3,115	9,782	-79.4	153.3	214.0





## International Tourist Arrivals to Siem Reap Angkor by Months in 2009 - 2015

(by all means of transportation)

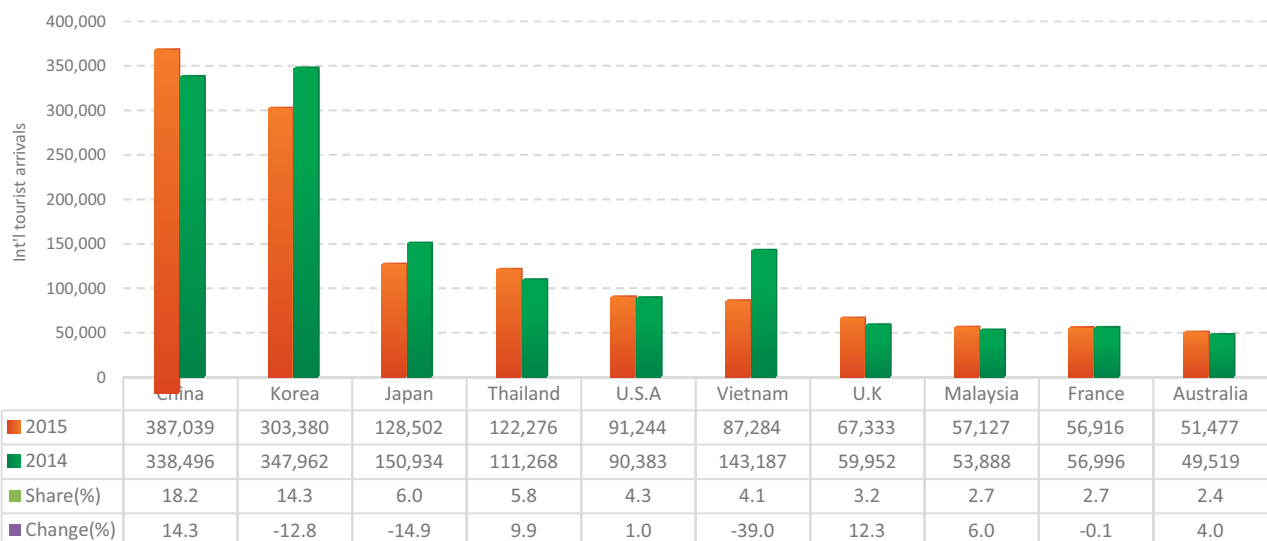
Months	2009	2010	2011	2012	2013	2014	2015	Change (%)			
								2012/11	2013/12	2014/13	2015*/14
<b>Q1</b>	<b>298,164</b>	<b>366,102</b>	<b>435,972</b>	<b>639,874</b>	<b>694,729</b>	<b>778,737</b>	<b>688,994</b>	<b>46.8</b>	<b>8.6</b>	<b>12.1</b>	<b>-11.5</b>
January	105,701	122,163	166,354	224,145	248,614	286,331	245,491	34.7	10.9	15.2	-14.3
February	94,241	126,057	146,593	217,132	231,369	262,226	237,729	48.1	6.6	13.3	-9.3
March	98,222	117,882	123,025	198,597	214,746	230,180	205,774	61.4	8.1	7.2	-10.6
<b>Q2</b>	<b>204,864</b>	<b>274,842</b>	<b>348,537</b>	<b>418,783</b>	<b>427,546</b>	<b>460,807</b>	<b>416,686</b>	<b>20.2</b>	<b>2.1</b>	<b>7.8</b>	<b>-9.6</b>
April	86,465	109,799	129,953	179,778	166,451	191,102	174,187	38.3	-7.4	14.8	-8.9
May	62,175	89,902	115,153	121,799	135,066	143,673	127,815	5.8	10.9	6.4	-11.0
June	56,224	75,141	103,431	117,206	126,029	126,032	114,684	13.3	7.5	0.0	-9.0
<b>Q3</b>	<b>218,202</b>	<b>287,229</b>	<b>382,595</b>	<b>428,556</b>	<b>451,678</b>	<b>501,637</b>	<b>441,246</b>	<b>12.0</b>	<b>5.4</b>	<b>11.1</b>	<b>-12.0</b>
July	71,282	95,427	122,954	143,464	159,244	165,895	154,642	16.7	11.0	4.2	-6.8
August	80,220	106,502	140,769	163,502	151,449	183,140	166,098	16.1	-7.4	20.9	-9.3
September	66,700	85,300	118,872	121,590	140,985	152,602	120,506	2.3	16.0	8.2	-21.0
<b>Q4</b>	<b>276,854</b>	<b>377,083</b>	<b>442,972</b>	<b>576,123</b>	<b>663,363</b>	<b>609,756</b>	<b>577,937</b>	<b>30.1</b>	<b>15.1</b>	<b>-8.1</b>	<b>-5.2</b>
October	77,553	108,241	122,450	159,067	196,263	147,737	154,208	29.9	23.4	-24.7	4.4
November	90,472	136,468	148,656	190,614	214,731	212,203	200,512	28.2	12.7	-1.2	-5.5
December	108,829	132,374	171,866	226,442	252,369	249,816	223,217	31.8	11.4	-1.0	-10.6
<b>Total</b>	<b>998,084</b>	<b>1,305,256</b>	<b>1,610,076</b>	<b>2,063,336</b>	<b>2,237,316</b>	<b>2,350,937</b>	<b>2,124,863</b>	<b>28.2</b>	<b>8.4</b>	<b>5.1</b>	<b>-9.6</b>

## International Tourist Arrivals to Siem Reap Angkor by Mode of Transport in 2013 - 2015

(by all means of transport)

Mode of Transport	2013	2014	2015	Change (%)	
				2014/13	2015*/14
<b>Air</b>	<b>1,368,057</b>	<b>1,611,076</b>	<b>1,623,156</b>	<b>17.8</b>	<b>0.7</b>
International Airport	1,181,281	1,355,693	1,414,967	14.8	4.4
Phnom Penh	186,776	255,383	208,189	36.7	-18.5
<b>Land</b>	<b>856,340</b>	<b>728,647</b>	<b>487,666</b>	<b>-14.9</b>	<b>-33.1</b>
Phnom Penh	267,845	273,742	163,511	2.2	-40.3
Poi Pet	583,830	444,190	314,435	-23.9	-29.2
O'Smach	2,846	6,690	6,499	135.1	-2.9
Chorm	1,819	4,025	3,221	121.3	-20.0
<b>Waterways</b>	<b>13,089</b>	<b>11,214</b>	<b>14,041</b>	<b>-14.3</b>	<b>25.2</b>
Phnom Penh	7,752	5,557	6,127	-28.3	10.3
Battambang	5,337	5,657	7,914	6.0	39.9
<b>Total</b>	<b>2,237,486</b>	<b>2,350,937</b>	<b>2,124,863</b>	<b>5.1</b>	<b>-9.6</b>

Siem Reap Angkor: top ten generating markets in 2015  
(by all means of transport)



## SECTION III

# INTERNATIONAL BORDER CHECK POINTS



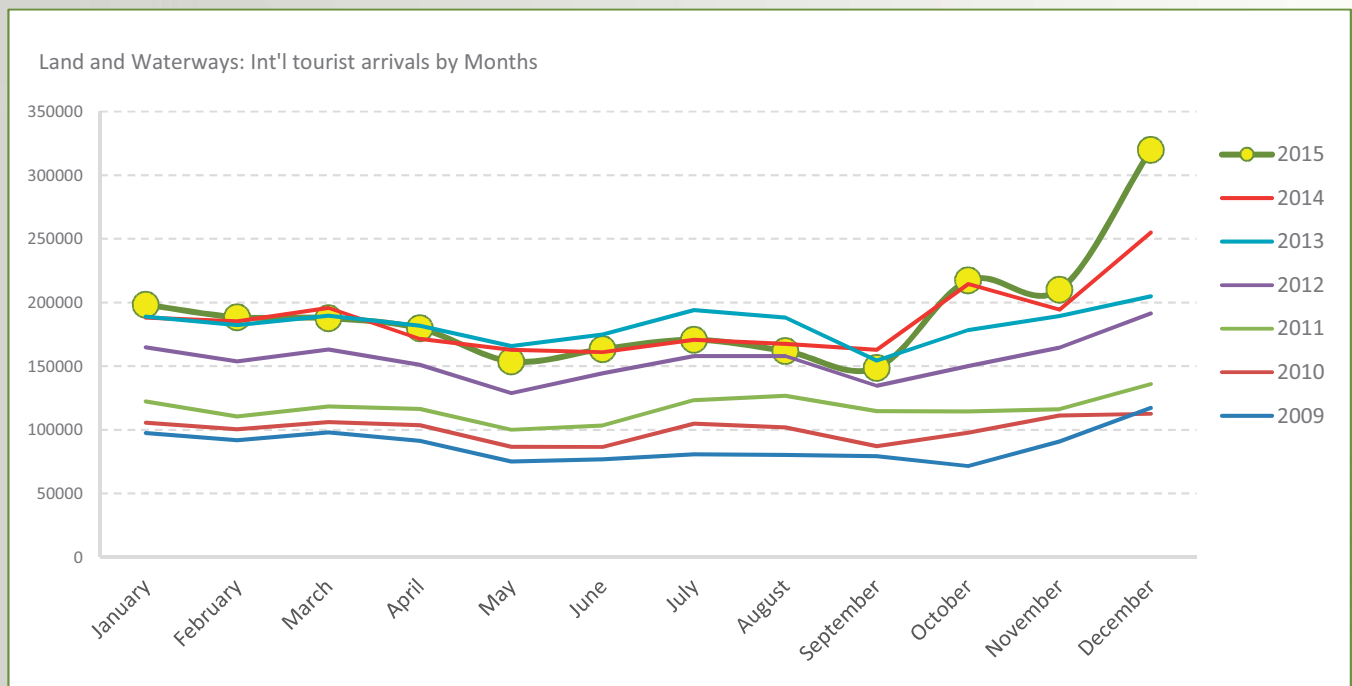




Photo by: Chak Vorleak

### International Tourist Arrivals to Cambodia by Land and Waterways in 2009 - 2015

Months	2009	2010	2011	2012	2013	2014	2015	Change (%)			
								2012/11	2013/12	2014/13	2015*/14
<b>Q1</b>	<b>287,075</b>	<b>312,186</b>	<b>351,038</b>	<b>481,454</b>	<b>560,912</b>	<b>568,953</b>	<b>574,368</b>	<b>37.2</b>	<b>16.5</b>	<b>1.4</b>	<b>1.0</b>
January	97,453	105,595	122,290	164,758	188,896	188115	198221	34.7	14.7	-0.4	5.4
February	91,667	100,459	110,491	153,722	182,307	185195	188452	39.1	18.6	1.6	1.8
March	97,955	106,132	118,257	162,974	189,709	195643	187695	37.8	16.4	3.1	-4.1
<b>Q2</b>	<b>243,009</b>	<b>276,597</b>	<b>319,618</b>	<b>424,319</b>	<b>522,472</b>	<b>495,231</b>	<b>496,725</b>	<b>32.8</b>	<b>23.1</b>	<b>-5.2</b>	<b>0.3</b>
April	91,170	103,490	116,367	151,022	181,652	171370	179665	29.8	20.3	-5.7	4.8
May	74,979	86,622	99,989	128,822	165,860	162870	153745	28.8	28.8	-1.8	-5.6
June	76,860	86,485	103,262	144,475	174,960	160991	163315	39.9	21.1	-8.0	1.4
<b>Q3</b>	<b>240,249</b>	<b>293,770</b>	<b>364,473</b>	<b>450,347</b>	<b>536,600</b>	<b>501,218</b>	<b>481,113</b>	<b>23.6</b>	<b>19.2</b>	<b>-6.6</b>	<b>-4.0</b>
July	80,700	104,792	123,185	157,877	194,112	170740	170686	28.2	23.0	-12.0	0.0
August	80,283	101,777	126,763	157,899	188,159	167554	161820	24.6	19.2	-11.0	-3.4
September	79,266	87,201	114,525	134,571	154,329	162924	148607	17.5	14.7	5.6	-8.8
<b>Q4</b>	<b>279,515</b>	<b>321,436</b>	<b>366,326</b>	<b>506,104</b>	<b>572,523</b>	<b>663,880</b>	<b>747,024</b>	<b>38.2</b>	<b>13.1</b>	<b>16.0</b>	<b>12.5</b>
October	71,434	97,714	114,368	150,051	178,350	214541	217320	31.2	18.9	20.3	1.3
November	90,844	111,142	116,124	164,649	189,328	194376	209962	41.8	15.0	2.7	8.0
December	117,237	112,580	135,834	191,404	204,845	254963	319742	40.9	7.0	24.5	25.4
<b>Total</b>	<b>1,049,848</b>	<b>1,203,989</b>	<b>1,401,455</b>	<b>1,862,224</b>	<b>2,192,507</b>	<b>2,229,282</b>	<b>2,299,230</b>	<b>32.9</b>	<b>17.7</b>	<b>1.7</b>	<b>3.1</b>





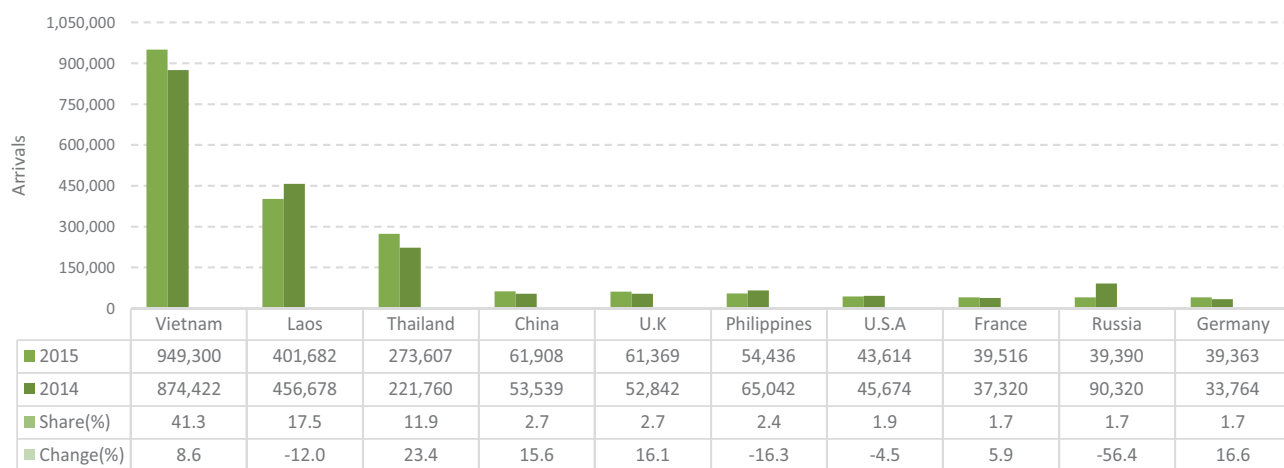


## Int'l Tourist Arrivals to Cambodia by Land and Waterways by Country of Residence in 2015

(by Land and Waterways)

Regions Country of Residence	2015												Total	Share (%) 2015*
	Jan	Feb	Mar	Apr	May	Jun	Jul	Aug	Sep	Oct	Nov	Dec		
<b>Grand Total</b>	<b>198,221</b>	<b>188,452</b>	<b>187,695</b>	<b>179,665</b>	<b>153,745</b>	<b>163,315</b>	<b>170,686</b>	<b>161,820</b>	<b>148,607</b>	<b>217,320</b>	<b>209,962</b>	<b>319,742</b>	<b>2,299,230</b>	<b>100.0</b>
<b>Americas</b>	<b>9,139</b>	<b>11,002</b>	<b>7,999</b>	<b>6,281</b>	<b>5,016</b>	<b>4,752</b>	<b>5,712</b>	<b>3,782</b>	<b>2,294</b>	<b>4,671</b>	<b>5,771</b>	<b>8,087</b>	<b>74,506</b>	<b>3.2</b>
<b>North America</b>	<b>7,943</b>	<b>9,822</b>	<b>7,193</b>	<b>5,608</b>	<b>4,096</b>	<b>4,125</b>	<b>4,797</b>	<b>3,113</b>	<b>1,776</b>	<b>3,603</b>	<b>4,959</b>	<b>6,498</b>	<b>63,533</b>	<b>2.8</b>
Canada	2,369	3,052	2,332	1,571	1,161	1,028	1,039	808	447	1,052	1,712	2,164	18,735	0.8
Mexico	72	108	74	76	51	68	219	127	56	99	81	153	1,184	0.1
United States	5,502	6,662	4,787	3,961	2,884	3,029	3,539	2,178	1,273	2,452	3,166	4,181	43,614	1.9
<b>Central America</b>	<b>29</b>	<b>35</b>	<b>31</b>	<b>20</b>	<b>9</b>	<b>8</b>	<b>22</b>	<b>24</b>	<b>12</b>	<b>64</b>	<b>13</b>	<b>22</b>	<b>289</b>	<b>0.0</b>
Costa Rica	23	17	6	12	6	5	11	14	5	13	6	15	133	0.0
Honduras	3	8	21	2	1	2	4	3	4	19	1	3	71	0.0
Jamaica	3	10	4	6	2	1	7	7	3	32	6	4	85	0.0
<b>South America</b>	<b>1,070</b>	<b>1,130</b>	<b>598</b>	<b>483</b>	<b>819</b>	<b>295</b>	<b>819</b>	<b>468</b>	<b>258</b>	<b>506</b>	<b>552</b>	<b>1,006</b>	<b>8,004</b>	<b>0.3</b>
Argentina	322	327	226	180	188	55	97	127	80	129	145	239	2,115	0.1
Brazil	316	312	133	112	95	75	219	113	43	171	169	499	2,257	0.1
Chile	285	323	122	107	103	85	144	120	70	122	128	121	1,730	0.1
Colombia	51	72	37	30	106	46	47	48	36	43	59	59	634	0.0
Ecuador	31	25	34	3	6	13	10	8	5	7	8	13	163	0.0
Peru	39	40	13	10	18	8	23	17	7	13	25	51	264	0.0
Uruguay	16	23	26	36	301	6	15	19	9	15	10	17	493	0.0
Venezuela	10	8	7	5	2	7	264	16	8	6	8	7	348	0.0
Other America	97	15	177	170	92	324	74	177	248	498	247	561	2,680	0.1
<b>Africa</b>	<b>236</b>	<b>302</b>	<b>230</b>	<b>203</b>	<b>138</b>	<b>196</b>	<b>230</b>	<b>182</b>	<b>170</b>	<b>211</b>	<b>167</b>	<b>729</b>	<b>2,994</b>	<b>0.1</b>
<b>North Africa</b>	<b>12</b>	<b>20</b>	<b>10</b>	<b>11</b>	<b>5</b>	<b>9</b>	<b>15</b>	<b>14</b>	<b>25</b>	<b>11</b>	<b>8</b>	<b>26</b>	<b>166</b>	<b>0.0</b>
Morocco	7	7	7	3	2	4	7	4	16	4	3	11	75	0.0
Sudan	1	0	0	0	1	2	4	2	3	1	3	5	22	0.0
Tunisia	4	13	3	8	2	3	4	8	6	6	2	10	69	0.0
<b>Subsaharan Africa</b>	<b>222</b>	<b>275</b>	<b>202</b>	<b>157</b>	<b>118</b>	<b>144</b>	<b>213</b>	<b>161</b>	<b>117</b>	<b>141</b>	<b>149</b>	<b>553</b>	<b>2,452</b>	<b>0.1</b>
Cameroon	12	3	20	19	10	7	34	0	1	5	4	6	121	0.0
Congo	2	2	0	2	1	9	7	0	5	2	2	4	36	0.0
Ghana	0	0	2	1	3	0	0	1	1	3	1	3	15	0.0
Kenya	0	6	4	1	3	3	1	2	1	2	7	15	45	0.0
Liberia	1	0	1	2	4	0	5	4	2	2	4	3	28	0.0
Nigeria	8	7	5	9	11	10	1	4	9	6	3	6	79	0.0
South Africa	198	250	167	110	82	114	164	146	76	117	121	497	2,042	0.1
Tanzania	0	0	3	3	2	0	1	0	5	1	2	3	20	0.0
Uganda	0	2	0	5	1	0	0	2	15	1	1	4	31	0.0
Zimbabwe	1	5	0	5	1	1	0	2	2	2	4	12	35	0.0
Other Africa	2	7	18	35	15	43	2	7	28	59	10	150	376	0.0
<b>Middle East</b>	<b>1,002</b>	<b>968</b>	<b>679</b>	<b>460</b>	<b>355</b>	<b>299</b>	<b>544</b>	<b>474</b>	<b>410</b>	<b>466</b>	<b>550</b>	<b>985</b>	<b>7,192</b>	<b>0.3</b>
Egypt	17	14	4	5	8	4	10	7	38	6	4	6	123	0.0
Iran	11	2	3	2	2	2	5	5	20	1	3	12	68	0.0
Iraq	2	0	0	4	1	4	1	3	3	6	5	0	29	0.0
Israel	823	874	611	347	201	168	186	192	244	310	466	715	5,137	0.2
Jordan	6	1	5	6	6	4	4	11	5	6	2	0	56	0.0
Kuwait	88	59	27	32	94	45	91	171	41	37	30	13	728	0.0
Oman	14	4	4	10	7	3	10	15	5	4	5	17	98	0.0
Palestine	3	0	0	3	2	3	3	2	0	3	3	4	26	0.0
Qatar	1	2	6	3	3	3	5	3	3	7	5	6	47	0.0
Saudi Arabia	12	4	0	8	3	1	5	7	0	4	1	2	47	0.0
Syria	13	0	1	6	5	1	3	3	1	0	1	3	37	0.0
United Arab Emirates	6	1	9	5	11	3	198	31	10	14	11	6	305	0.0
Yemen	2	1	0	6	3	6	1	9	4	1	0	3	36	0.0
Other Middle East	4	6	9	23	9	52	22	15	36	67	14	198	455	0.0

Land and Waterways: top ten generating markets in 2015, int'l tourist arrivals by ranks

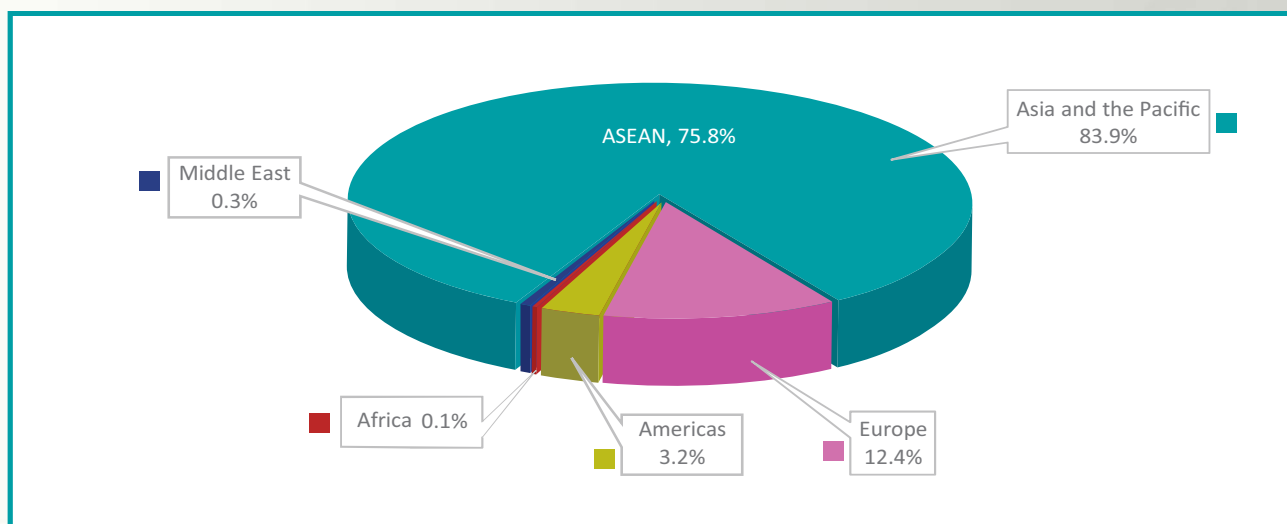




### International Tourist Arrivals to Cambodia by Land and Waterways by Regions in 2015

Months	Asia and the Pacific		Europe	Americas	Africa	Middle East	Total
		ASEAN					
<b>Q1</b>	<b>435,204</b>	<b>388,493</b>	<b>107,607</b>	<b>28,140</b>	<b>768</b>	<b>2,649</b>	<b>574,368</b>
January	150,007	131,789	37,837	9,139	236	1,002	198,221
February	138,654	121,745	37,526	11,002	302	968	188,452
March	146,543	134,959	32,244	7,999	230	679	187,695
<b>Q2</b>	<b>434,110</b>	<b>399,292</b>	<b>44,915</b>	<b>16,049</b>	<b>537</b>	<b>1,114</b>	<b>496,725</b>
April	151,614	136,363	21,107	6,281	203	460	179,665
May	135,661	125,308	12,575	5,016	138	355	153,745
June	146,835	137,621	11,233	4,752	196	299	163,315
<b>Q3</b>	<b>415,745</b>	<b>374,096</b>	<b>51,570</b>	<b>11,788</b>	<b>582</b>	<b>1,428</b>	<b>481,113</b>
July	144,058	130,972	20,142	5,712	230	544	170,686
August	136,058	118,896	21,324	3,782	182	474	161,820
September	135,629	124,228	10,104	2,294	170	410	148,607
<b>Q4</b>	<b>643,638</b>	<b>581,789</b>	<b>81,749</b>	<b>18,529</b>	<b>1,107</b>	<b>2,001</b>	<b>747,024</b>
October	195,272	176,220	16,700	4,671	211	466	217,320
November	174,610	163,564	28,864	5,771	167	550	209,962
December	273,756	242,005	36,185	8,087	729	985	319,742
<b>Total</b>	<b>1,928,697</b>	<b>1,743,670</b>	<b>285,841</b>	<b>74,506</b>	<b>2,994</b>	<b>7,192</b>	<b>2,299,230</b>
share (%)	83.9%	75.8%	12.4%	3.2%	0.1%	0.3%	100.0%

Note: 10 countries of ASEAN were included in Asia and the Pacific.



### International Tourist Arrivals to Cambodia by Land and Waterways by Purposes of Visit in 2009 - 2015

Purposes of Visit	Int'l tourist arrivals							Change (%)			
	2009	2010	2011	2012	2013	2014	2015	12/11	13/12	14/13	2015*/14
<b>Total</b>	<b>1,049,848</b>	<b>1,203,989</b>	<b>1,401,455</b>	<b>1,862,224</b>	<b>2,192,507</b>	<b>2,229,282</b>	<b>2,299,230</b>	<b>32.9</b>	<b>17.7</b>	<b>1.7</b>	<b>3.1</b>
Holiday	994,433	1,148,858	1,346,524	1,771,277	2,128,206	2,168,574	2,067,243	31.5	20.2	1.9	-4.7
Business	46,179	45,987	46,846	53,364	55,426	38,452	105,813	13.9	3.9	-30.6	175.2
Others	9,236	9,144	8,085	37,583	8,875	22,256	126,174	364.8	-76.4	150.8	466.9
<b>Q1</b>	<b>287,075</b>	<b>312,186</b>	<b>351,038</b>	<b>481,454</b>	<b>560,912</b>	<b>568,953</b>	<b>574,368</b>	<b>37.2</b>	<b>16.5</b>	<b>1.4</b>	<b>1.0</b>
Holiday	273,078	298,831	338,057	455,413	546,558	561,670	511,230	34.7	20.0	2.8	-9.0
Business	11,834	11,257	11,032	10,747	12,264	5,313	22,419	-2.6	14.1	-56.7	322.0
Others	2,163	2,098	1,949	15,294	2,090	1,970	40,719	684.7	-86.3	-5.7	1967.0
<b>Q2</b>	<b>243,009</b>	<b>276,597</b>	<b>319,618</b>	<b>424,319</b>	<b>522,472</b>	<b>495,231</b>	<b>496,725</b>	<b>32.8</b>	<b>23.1</b>	<b>-5.2</b>	<b>0.3</b>
Holiday	228,833	262,426	304,828	402,093	505,229	482,622	455,609	31.9	25.6	-4.5	-5.6
Business	11,697	11,797	12,581	13,812	14,447	10,588	26,892	9.8	4.6	-26.7	154.0
Others	2,479	2,374	2,209	8,414	2,796	2,021	14,224	280.9	-66.8	-27.7	603.8
<b>Q3</b>	<b>240,249</b>	<b>293,770</b>	<b>364,473</b>	<b>450,347</b>	<b>536,600</b>	<b>501,218</b>	<b>481,113</b>	<b>23.6</b>	<b>19.2</b>	<b>-6.6</b>	<b>-4.0</b>
Holiday	227,026	281,572	350,709	429,512	521,200	486,973	433,764	22.5	21.3	-6.6	-10.9
Business	11,073	10,183	11,801	13,303	13,072	12,023	26,282	12.7	-1.7	-8.0	118.6
Others	2,150	2,015	1,963	7,532	2,328	2,222	21,067	283.7	-69.1	-4.6	848.1
<b>Q4</b>	<b>279,515</b>	<b>321,436</b>	<b>366,326</b>	<b>506,104</b>	<b>572,523</b>	<b>663,880</b>	<b>747,024</b>	<b>38.2</b>	<b>13.1</b>	<b>16.0</b>	<b>12.5</b>
Holiday	265,496	306,029	352,930	484,259	555,219	637,309	666,640	37.2	14.7	14.8	4.6
Business	11,575	12,750	11,432	15,502	15,643	10,528	30,220	35.6	0.9	-32.7	187.0
Others	2,444	2,657	1,964	6,343	1,661	16,043	50,164	223.0	-73.8	865.9	212.7

# UNIT II

## DOMESTIC TOURISM







Photo by: Suong Mardy



## Domestic Tourism Statistics Report in 2011 - 2015

No.	Destinations	2011		2012		2013		2014		2015		share (%)		change (%)	
		KHM	INT	KHM	INT	KHM	INT	KHM	INT	KHM	INT	2015*	2015*/14	KHM	INT
<b>I</b>	<b>1 Phnom Penh</b>	<b>2,124,065</b>	<b>1,307,498</b>	<b>1,984,612</b>	<b>1,520,971</b>	<b>2,204,573</b>	<b>1,972,879</b>	<b>2,257,498</b>	<b>2,151,838</b>	<b>2,273,150</b>	<b>2,650,368</b>	<b>23.5</b>	<b>45.7</b>	<b>0.7</b>	<b>23.2</b>
<b>II</b>	<b>Cultural Zone</b>	<b>1,815,755</b>	<b>1,644,267</b>	<b>2,125,322</b>	<b>2,107,982</b>	<b>2,345,567</b>	<b>2,290,778</b>	<b>2,865,457</b>	<b>2,414,737</b>	<b>3,106,482</b>	<b>2,198,107</b>	<b>32.1</b>	<b>37.9</b>	<b>8.4</b>	<b>-9.0</b>
	2 Kampong Thom	58,587	21,882	75,505	22,272	71,538	27,179	83,389	23,765	86,296	27,235	0.9	0.5	3.5	14.6
	3 Oddar Meanchey	23,312	1,767	43,598	3,186	34,272	1,763	48,331	2,360	47,633	3,851	0.5	0.1	-1.4	63.2
	4 Preah Vihear	32,506	10,542	48,361	19,188	46,757	24,550	60,787	37,675	86,100	42,158	0.9	0.7	41.6	11.9
	5 Siem Reap	1,701,350	1,610,076	1,957,858	2,063,336	2,193,000	2,237,286	2,672,950	2,350,937	2,886,453	2,124,863	29.8	36.6	8.0	-9.6
<b>III</b>	<b>Coastal Zone</b>	<b>1,691,829</b>	<b>193,093</b>	<b>1,827,927</b>	<b>280,658</b>	<b>2,080,790</b>	<b>513,891</b>	<b>2,115,489</b>	<b>600,367</b>	<b>2,403,570</b>	<b>610,458</b>	<b>24.8</b>	<b>10.5</b>	<b>13.6</b>	<b>1.7</b>
	6 Kampong Som	558,287	153,736	657,821	212,643	731,604	302,325	969,109	358,639	1,156,813	362,061	12.0	6.2	19.4	1.0
	7 Kampot	316,376	17,198	401,528	24,972	614,610	117,280	679,933	131,468	683,027	176,435	7.1	3.0	0.5	34.2
	8 Kep	740,313	8,763	685,780	35,316	638,496	46,840	300,599	61,982	428,485	51,008	4.4	0.9	42.5	-17.7
	9 Koh Kong	76,853	13,396	82,798	7,727	96,080	47,446	165,848	48,278	135,245	20,954	1.4	0.4	-18.5	-56.6
<b>IV</b>	<b>Eco-tourism</b>	<b>285,783</b>	<b>48,674</b>	<b>371,127</b>	<b>53,388</b>	<b>407,551</b>	<b>60,501</b>	<b>444,918</b>	<b>60,031</b>	<b>720,463</b>	<b>63,261</b>	<b>7.4</b>	<b>1.1</b>	<b>61.9</b>	<b>5.4</b>
	10 Kratie	35,941	17,296	48,412	19,714	46,546	22,766	67,757	23,662	316,482	24,304	3.3	0.4	367.1	2.7
	11 Mondul Kiri	58,757	4,879	78,784	5,138	95,059	5,215	108,716	6,498	129,712	7,253	1.3	0.1	19.3	11.6
	12 Rattanak Kiri	100,930	17,562	134,965	19,163	145,633	20,280	153,978	21,126	156,716	22,596	1.6	0.4	1.8	7.0
	13 Stung Treng	90,155	8,937	108,966	9,373	120,313	12,240	114,467	8,745	117,553	9,108	1.2	0.2	2.7	4.2
<b>V</b>	<b>Battambang Zone</b>	<b>606,885</b>	<b>136,204</b>	<b>595,328</b>	<b>228,130</b>	<b>687,848</b>	<b>191,899</b>	<b>772,769</b>	<b>171,156</b>	<b>646,003</b>	<b>162,893</b>	<b>6.7</b>	<b>2.8</b>	<b>-16.4</b>	<b>-4.8</b>
	14 Banteay Meanchey	77,331	12,157	80,276	15,378	79,604	1,902	97,888	2,303	92,943	4,533	1.0	0.1	-5.1	96.8
	15 Battambang	288,598	58,941	317,010	72,314	392,583	83,403	437,345	89,152	501,260	94,448	5.2	1.6	14.6	5.9
	16 Pailin	233,535	62,047	188,240	136,586	197,225	101,919	201,998	73,410	21,913	55,279	0.2	1.0	-89.2	-24.7
	17 Pursat	7,421	3,059	9,802	3,852	18,436	4,675	35,538	6,291	29,887	8,633	0.3	0.1	-15.9	37.2
<b>VI</b>	<b>Others</b>	<b>1,286,748</b>	<b>48,034</b>	<b>1,349,544</b>	<b>49,581</b>	<b>792,424</b>	<b>97,619</b>	<b>548,306</b>	<b>214,138</b>	<b>529,324</b>	<b>114,340</b>	<b>5.5</b>	<b>2.0</b>	<b>-3.5</b>	<b>-46.6</b>
	18 Kampong Cham	233,439	11,222	276,194	10,976	403,684	54,865	347,869	31,554	264,064	28,794	2.7	0.5	-24.1	-8.7
	19 Kampong Chhnang	15,484	4,335	14,484	3,428	24,162	3,417	26,459	3,622	22,158	3,394	0.2	0.1	-16.3	-6.3
	20 Kampong Speu	17,060	12,127	22,701	13,511	22,632	12,545	23,391	12,628	22,600	11,937	0.2	0.2	-3.4	-5.5
	21 Kandal	958,491	5,186	963,128	7,552	253,784	12,564	54,266	9,536	49,116	10,307	0.5	0.2	-9.5	8.1
	22 Prey Veng	10,761	1,602	9,682	3,046	8,634	2,730	7,783	2,208	8,019	2,175	0.1	0.0	3.0	-1.5
	23 Svay Rieng	12,257	1,607	20,679	1,042	22,830	1,711	30,381	585	42,742	614	0.4	0.0	40.7	5.0
	24 Takeo	39,256	11,955	42,676	10,026	56,698	9,787	42,706	9,224	38,994	10,949	0.4	0.2	-8.7	18.7
	25 Thbong Khmum							15,451	144,781	81,631	46,170	0.8	0.8	428.3	-68.1
	<b>TOTAL</b>	<b>7,811,065</b>	<b>3,377,770</b>	<b>8,253,860</b>	<b>4,240,710</b>	<b>8,518,753</b>	<b>5,127,567</b>	<b>9,004,437</b>	<b>5,612,267</b>	<b>9,678,992</b>	<b>5,799,427</b>	<b>100.0</b>	<b>100.0</b>	<b>7.5</b>	<b>3.3</b>

**Note:**

KHM: Cambodian Visitors

INT: Foreign Visitors

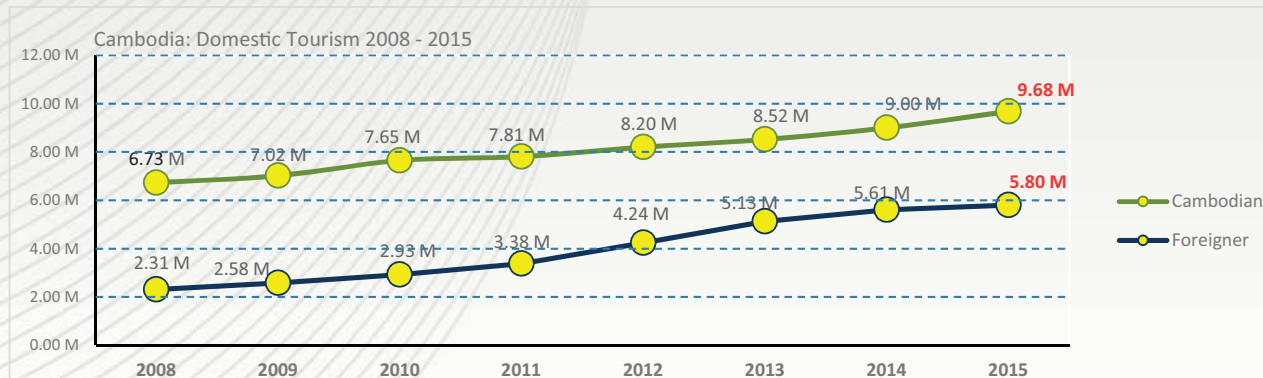






Photo by: Chak Vorleak



# UNIT III

## TOURISM SUPPLY







Photo by: Chak Vorleak

## Tourism Supply: Accommodations

### Number of Hotels and Guesthouses in 1997 - 2015

Years	Hotels				Guesthouses			
	Number	Change (%)	Rooms	Change (%)	Number	Change (%)	Rooms	Change (%)
1997	179	0	6,989	0	60	0	477	0
1998	216	20.7	8,247	18.0	147	145.0	1,510	216.6
1999	221	2.3	9,115	10.5	186	26.5	1,897	25.6
2000	240	8.6	9,673	6.1	292	57.0	3,233	70.4
2001	247	2.9	10,804	11.7	370	26.7	3,899	20.6
2002	267	8.1	11,426	5.8	509	37.6	6,109	56.7
2003	292	9.4	13,201	15.5	549	7.9	6,497	6.4
2004	299	2.4	14,271	8.1	615	12.0	7,684	18.3
2005	317	6.0	15,465	8.4	684	11.2	9,000	17.1
2006	351	10.7	17,914	15.8	742	8.5	9,166	1.8
2007	395	12.5	20,470	14.3	891	20.1	11,563	26.2
2008	398	0.8	20,678	1.0	925	3.8	12,180	5.3
2009	451	13.3	23,010	11.3	1,018	10.1	14,512	19.1
2010	440	-2.4	24,393	6.0	1,087	6.8	15,321	5.6
2011	476	8.2	26,484	8.6	1,142	5.1	16,752	9.3
2012	490	2.9	27,117	2.4	1,296	13.5	19,329	15.4
2013	545	11.2	29,937	10.4	1,462	12.8	21,286	10.1
2014	554	1.7	29,729	-0.7	1,563	6.9	22,256	4.6
2015	668	20.6	34,619	16.4	2,229	42.6	28,660	28.8

### Tourism Service Statistics in 2015

No.	Destinations	Hotels		Guesthouses		Restaurants	Massage	Karaoke	Casino
		No.	Rooms	No.	Rooms				
I	1 Phnom Penh	223	10,000	668	7,568	1,310	154	248	1
II	<b>Cultural Zone</b>	<b>199</b>	<b>12,543</b>	<b>394</b>	<b>5,922</b>	<b>311</b>	<b>72</b>	<b>77</b>	<b>3</b>
	2 Kampong Thom	6	186	42	644	64	7	30	
	3 Oddar Meanchey	4	244	22	380	21	11	11	3
	4 Preah Vihear	1	20	36	453	37	3	17	
	5 Siem Reap	188	12,093	294	4,445	189	51	19	
III	<b>Costal Zone</b>	<b>94</b>	<b>5,060</b>	<b>554</b>	<b>6,802</b>	<b>345</b>	<b>62</b>	<b>40</b>	<b>20</b>
	6 Kampong Som	69	3,213	269	3,641	123	25	10	15
	7 Kampot	8	789	120	1,396	80	15	13	4
	8 Kep	8	226	76	885	77	7	12	
	9 Koh Kong	9	832	89	880	65	15	5	1
IV	<b>Eco-tourism Zone</b>	<b>39</b>	<b>1,553</b>	<b>144</b>	<b>1,898</b>	<b>139</b>	<b>16</b>	<b>49</b>	<b>3</b>
	10 Kratie	14	547	34	392	39	4	12	2
	11 Mondul Kiri	6	273	43	576	40	5	17	
	12 Rattanak Kiri	14	548	36	541	38	3	13	1
	13 Stung Treng	5	185	31	389	22	4	7	
V	<b>Battambang Zone</b>	<b>66</b>	<b>3,068</b>	<b>189</b>	<b>2,974</b>	<b>241</b>	<b>49</b>	<b>85</b>	<b>16</b>
	14 Banteay Meanchey	19	568	63	1,141	68	21	19	9
	15 Battambang	37	1,748	86	1,084	47	15	37	
	16 Pailin	5	399	20	501	109	3	16	7
	17 Pursat	5	353	20	248	17	10	13	
VI	<b>Others</b>	<b>47</b>	<b>2,395</b>	<b>280</b>	<b>3,496</b>	<b>274</b>	<b>25</b>	<b>182</b>	<b>14</b>
	18 Kampong Cham	12	641	74	759	86	14	57	
	19 Kampong Chhnang	8	244	21	267	34		6	
	20 Kampong Speu	4	64	15	112	13		7	
	21 Kandal	1	29	18	219	8			
	22 Prey Veng	7	158	35	352	17	1	38	2
	23 Svay Rieng	12	1,104	36	625	34	5	17	12
	24 Takeo	1	30	59	675	65	3	46	
	25 Tboung Khmum	2	125	22	487	17	2	11	
	<b>TOTAL</b>	<b>668</b>	<b>34,619</b>	<b>2,229</b>	<b>28,660</b>	<b>2,620</b>	<b>378</b>	<b>681</b>	<b>57</b>



## Tourism Supply: Tourism Services

### Number of travel agencies and tour operators from 1996 - 2015

Years	Offices			Change (%)
	Head	Branch	Total	
1996	81	35	116	0
1997	78	37	115	-0.9%
1998	103	34	137	19.1%
1999	117	43	160	16.8%
2000	140	64	204	27.5%
2001	166	70	236	15.7%
2002	186	73	259	9.7%
2003	186	84	270	4.2%
2004	208	94	302	11.9%
2005	237	99	336	11.3%
2006	277	105	382	13.7%
2007	333	118	451	18.1%
2008	354	119	473	4.9%
2009	372	113	485	2.5%
2010	392	115	507	4.5%
2011	404	185	589	16.2%
2012	457	108	565	-4.1%
2013	513	100	613	8.5%
2014	505	108	613	0.0%
2015	517	115	632	3.1%

### Licensed Tour Guides in 2015

No.	Languages	2013				2014				2015			
		Phnom Penh		Siem Reap		Phnom Penh		Siem Reap		Phnom Penh		Siem Reap	
		Total	Females	Total	Females	Total	Females	Total	Females	Total	Females	Total	Females
1	English	227	52	1273	72	251	56	1275	72	261	56	1278	72
2	Japanese	60	17	757	163	67	20	767	165	69	20	783	165
3	French	94	32	246	45	98	33	250	46	101	33	251	46
4	Chinese	127	15	634	98	156	21	669	102	160	21	717	102
5	Korean	6	0	174	16	9	1	199	22	10	1	219	22
6	Thai	12	5	321	51	14	5	358	61	14	5	371	61
7	German	47	14	107	12	50	15	107	12	50	15	107	12
8	Spanish	22	3	112	8	23	3	112	8	23	3	113	8
9	Italian	11	2	25	1	13	2	25	1	13	2	25	1
10	Russian	22	4	70	8	23	4	77	9	24	4	77	9
11	Vietnam	47	10	100	13	55	12	111	15	57	12	114	15
12	English-Span	1		4		1		4		1		4	
13	French-Thai	1		1		1		1		1		1	
14	Malay	8		4		9		4		10		4	
	<b>Total</b>	<b>675</b>	<b>154</b>	<b>3,819</b>	<b>487</b>	<b>759</b>	<b>172</b>	<b>3,950</b>	<b>513</b>	<b>794</b>	<b>172</b>	<b>4,064</b>	<b>513</b>

## Airlines

### Domestic Airlines

No.	Airlines	Code	From / To	Flight	Time Travel	Address
1	Cambodia Angkor Air	K6	PNH-REP PNH-SGN PNH-PVG PNH-CAN PNH-FOC PNH-ICN REP-PNH REP-KOS REP-SGN REP-CAN REP-HGH REP-FOC REP-XIY	35/WEEK 21/WEEK 28/WEEK 21/WEEK 1/WEEK 4/week 35/WEEK 7/WEEK 23/WEEK 7/WEEK 2/WEEK 1/WEEK 1/WEEK	45 MN 45 MN 4H 2H35 MN 3H05 MN 5H10 45 MN 50 MN 1H20 2H45 3H45 3H05 MN 3H25	PNH: #206A, Preah Norodom Blvd., Tel.: +855 23 6666788 Fax: +855 23 224164            FOC FUZHOU XIY XIANYANG
2	Cambodian Bayon Airlines	BD	PNH-REP PNH-KOS REP-PNH REP-KOS KOS-REP	7/WEEK 2/WEEK 7/WEEK 7/WEEK 7/WEEK	50MN 35MN 50MN 50MN 50MN	
3	Bassaka Air	5B	PNH-REP REP-PNH PNH-MFM	7/WEEK 7/WEEK 2/WEEK	55MN 55MN 2H30	
4	Skywing Angkor Airlines	ZA	REP-ICN REP-PUS REP-NNG REP-KWE REP-KMG	2/WEEK 1/WEEK 1/WEEK 1/WEEK 3/WEEK	5H20MN 5H35MN 2H10MN 1H35MN 1H55MN	Re-branding    KWE GUIYANG

### International Airlines

No.	Airlines	Code	From / To	Flight	Time Travel	Address
5	Air Asia Berhad	AK/FD	Kuala Lumpur	PNH: 14/week REP: 14/week	2h10mn 4h45	PNH: #66, Mao Tse Toung Blvd.,
6	Air Busan	BX	Pusan	REP: 4/week	4h45	
7	Air China	CA	Peking	REP: 2/week		
8	Asiana Airlines	OZ	Seoul	PNH: 7/week REP: 7/week	5h 10mn 5h30mn	Tel.: +855 (0)23 890441-442
9	Bangkok Airways	PG	Bangkok	PNH: 35/week REP: 32/week	1h10mn 1h	PNH: #61A, Street 214, Tel.: +855 23 722545 REP: #571, National Road 6 Tel.: +855 (0)63 720022
10	Cebu Pacific	5J	Manila	REP: 4/week		
11	China Airlines	CI	Taipei, Taiwan	PNH: 3/week	3h30mn	PNH: #32, Norodom Blvd., Tel.: +855 (0)223525
12	China Eastern Airlines	MU	Naning Shanghai	PNH: 3/week REP: 2/week	2h10mn	
13	China Southern Airlines	CZ	Goangzhou	PNH: 10/week REP: 7/week	1h30mn	PNH: #168, Street Monireth, Tel.: +855 (0)23 424588
14	Dragon Air	KA	Hong Kong	PNH: 7/week REP: 4/week	2h15mn	PNH: #168, Street 217, Tel.: +855 (0)23 424300
15	Estar Jet	ZE				
16	Eva Air	BR	Taiwan	PNH: 7/week	3h30mn	PNH: Suite 8A, #298, Mao Tse Toung Tel.: +855 (0)23 219911
17	Hong Kong Airlines	HX	Hong Kong	PNH: 3/WEEK	2H50	
18	Hong Kong Express Airways	UO	Hong Kong	REP: 3/week	2H35	
19	Jetstar Asia Airways	3K	Singapore	PNH: 7/week REP: 3/week	1h55mn 2h05mn	PNH: Tel.: +855 (0)23 220909 REP: Tel.: +855 (0)63 964388
20	Korean Air	KE	Seoul Seoul Pusan	PNH: 7/week REP: 13/week REP: 4/week	5h	Room No. F3-R03, Intelligent Office, 254 Preah Monivong Blvd., Phnom Penh Tel.: +855 (0)23 224047-49
21	Lao Airlines	QV	Vientiane	PNH: 3/week REP: 8/week	2h30mn 2h35mn	PNH: #58B, Sihanouk Blvd., Tel.: +855 (0)23 222956 REP: #114, National Road 6 Tel.: +855 (0)63 963283
22	Malaysian Airlines	MH	Kuala Lumpur	PNH: 14/week REP: 3/week	1h50mn 1h05mn	PNH: #172-184, Monivong Blvd., Tel.: +855 23 426688
23	Qatar Airways	QR	Doha	PNH: 7/week		
24	Silk Air	MI	Singapore	PNH: 13/week REP: 8/week	2h15mn 1h55mn	PNH: #219-B, Himawari Hotel Apartments Tel.: +855 23 426808
25	Shandong Airlines	SC	ChongQing	PNH: 1/week	3H30	
26	Thai Air Asia	FD	Bangkok	PNH: 7/week REP: 14/week		PNH: #32, Street 322, Norodom Blvd., Fax: +855 (0)23 222695
27	Thai Airways International	TG	Bangkok	PNH: 14/week	1h10mn	PNH: #8B, 294 Mao Tse Toung Blvd., Tel.: +855 23 214359-61 Fax: +855 23 214369
28	Thai Smile Airways	WE	Bangkok	REP: 5/week	1h 20 mn	
29	Vietnam Airlines	VN	Ho Chi Minh Vientiane Ho Chi Minh Hanoi Lung Prabang	PNH: 10/week PNH: 7/week REP: 14/week REP: 28/week REP: 7/week	1h 2h35mn 2h40mn	PNH: #41, Street 214 Tel.: +855 (0)23 215998 REP: #342, National Road 6, Tel.: +855 (0)63 964488
30	Xiemen Airlines	MF				

### Charter International Airlines

No.	Airlines	Code	From / To	Flight	Time Travel	Address
31	Japan Airlines	JL		REP: Charter		
32	Thomson Airways	BY		REP: Charter		
33	Tuifly Nordic	6B		PNH: Charter		
34	Jeju Air	7C		REP: Charter		
35	Transasia Airways	GE		REP: Charter		
36	Ice Landair	FI		REP: Charter		
37	Spring Airlines	9C	Shanghai			

Last up date: 30 March 2016



**Published by:** Statistics and Tourism Information Department, Ministry of Tourism.

**Sources:**

- General Department of Immigration (GDI), Ministry of Interior.
- 25 Provincial Tourism Departments.

**Compiled by:**

Mr. KONG Sopheareak - Director, Researcher and analyst

Mr. HORTH Vanny - Deputy Director, Inbound and outbound tourism statistics

Mr. CHAK Vorleak - Chief Officer, Survey monitor and photographer

Mr. SENG Sithikun - Chief Officer, Survey and domestic tourism statistics

Mr. LENG Daravuth - Chief Officer, Survey and data collector

Mr. OEUN Channthan - Officer, Survey and data entries

Mr. RAY Bora - Officer, Editor and data entries





# CAMBODIA

*Kingdom of Wonder*

Clean City, Clean Resort, Good Service, Best Hospitality



2015 WINNER  
SIEM REAP, CAMBODIA

#1 DESTINATION IN ASIA #2 DESTINATION IN THE WORLD