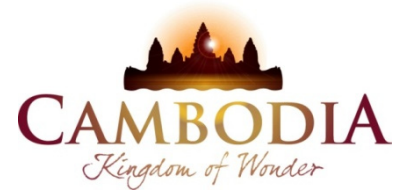




KINGDOM OF CAMBODIA  
NATION RELIGION KING



# TOURISM STATISTICS REPORT

# May 2019

**MINISTRY OF TOURISM**

Statistics and Tourism Information Department

No. A3, Street 169, Sangkat Veal Vong, Khan 7 Makara, Phnom Penh, Cambodia.

Fax: +855 23 885003

E-mail: [kong@tourism.gov.kh](mailto:kong@tourism.gov.kh)

Web site: [www.tourism.gov.kh](http://www.tourism.gov.kh)

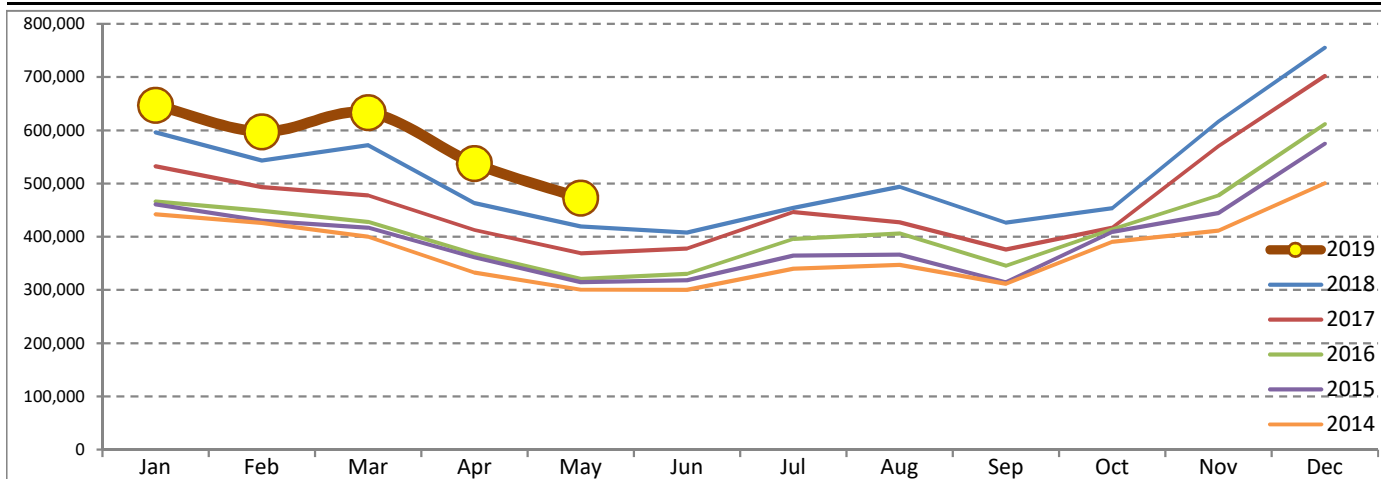
# Tourism Highlights

## Int'l Tourist Arrivals, Average Length of Stays, Hotel Occupancy & Int'l Tourism Receipts 1993 - 2018

Years	Int'l Tourist Arrivals		Average Length	Hotel Occupancy	Int'l Tourism Receipts
	Number	Change (%)	of Stays (Days)	(%)	(Million US\$)
1993	118,183	-	N/A	N/A	N/A
1994	176,617	49.4	N/A	N/A	N/A
1995	219,680	24.4	8.00	37.0	100
1996	260,489	18.6	7.50	40.0	118
1997	218,843	-16.0	6.40	30.0	103
1998	286,524	30.9	5.20	40.0	166
1999	367,743	28.3	5.50	44.0	190
2000	466,365	26.8	5.50	45.0	228
2001	604,919	29.7	5.50	48.0	304
2002	786,524	30.0	5.80	50.0	379
2003	701,014	-10.9	5.50	50.0	347
2004	1,055,202	50.5	6.30	52.0	578
2005	1,421,615	34.7	6.30	52.0	832
2006	1,700,041	19.6	6.50	54.8	1,049
2007	2,015,128	18.5	6.50	54.8	1,400
2008	2,125,465	5.5	6.65	62.7	1,595
2009	2,161,577	1.7	6.45	63.6	1,561
2010	2,508,289	16.0	6.45	65.7	1,786
2011	2,881,862	14.9	6.50	66.2	1,912
2012	3,584,307	24.4	6.30	68.5	2,210
2013	4,210,165	17.5	6.75	69.5	2,547
2014	4,502,775	7.0	6.50	67.6	2,736
2015	4,775,231	6.1	6.80	70.2	3,012
2016	5,011,712	5.0	6.30	68.9	3,212
2017	5,602,157	11.8	6.60	71.3	3,638
2018	6,201,077	10.7	7.00	72.2	4,375

### International Tourist Arrivals to Cambodia

Months	2014	2015	2016	2017	2018	2019	Change (%)				
							15/14	16/15	17/16	18/17	19*/18
<b>Q1</b>	<b>1,267,922</b>	<b>1,307,836</b>	<b>1,342,477</b>	<b>1,502,896</b>	<b>1,711,253</b>	<b>1,877,853</b>	<b>3.1</b>	<b>2.6</b>	<b>11.9</b>	<b>13.9</b>	<b>9.7</b>
Jan	442,045	460,577	466,086	532,206	596,241	647,206	4.2	1.2	14.2	12.0	8.5
Feb	425,801	430,207	448,468	493,316	542,937	597,483	1.0	4.2	10.0	10.1	10.0
Mar	400,076	417,052	427,923	477,374	572,075	633,164	4.2	2.6	11.6	19.8	10.7
<b>Q2</b>	<b>933,446</b>	<b>994,154</b>	<b>1,018,455</b>	<b>1,159,783</b>	<b>1,290,407</b>	<b>1,010,608</b>	<b>6.5</b>	<b>2.4</b>	<b>13.9</b>	<b>11.3</b>	
Apr	332,690	361,139	367,684	412,925	463,423	537,656	8.6	1.8	12.3	12.2	16.0
May	300,302	314,748	320,601	368,809	419,171	472,952	4.8	1.9	15.0	13.7	12.8
Jun	300,454	318,267	330,170	378,049	407,813		5.9	3.7	14.5	7.9	
<b>Q3</b>	<b>998,690</b>	<b>1,044,880</b>	<b>1,147,483</b>	<b>1,250,082</b>	<b>1,374,373</b>	<b>0</b>	<b>4.6</b>	<b>9.8</b>	<b>8.9</b>	<b>9.9</b>	
Jul	340,091	364,325	395,761	446,627	454,056		7.1	8.6	12.9	1.7	
Aug	347,211	366,096	406,214	427,224	494,043		5.4	11.0	5.2	15.6	
Sep	311,388	314,459	345,508	376,231	426,274		1.0	9.9	8.9	13.3	
<b>Q4</b>	<b>1,302,717</b>	<b>1,428,361</b>	<b>1,503,297</b>	<b>1,689,396</b>	<b>1,825,044</b>	<b>0</b>	<b>9.6</b>	<b>5.2</b>	<b>12.4</b>	<b>8.0</b>	
Oct	390,637	408,922	414,077	417,039	453,370		4.7	1.3	0.7	8.7	
Nov	411,501	444,640	477,686	570,471	616,549		8.1	7.4	19.4	8.1	
Dec	500,579	574,799	611,534	701,886	755,125		14.8	6.4	14.8	7.6	
<b>Total</b>	<b>4,502,775</b>	<b>4,775,231</b>	<b>5,011,712</b>	<b>5,602,157</b>	<b>6,201,077</b>	<b>2,888,461</b>	<b>6.1</b>	<b>5.0</b>	<b>11.8</b>	<b>10.7</b>	<b>11.4</b>



Source: Tourism Statistics Department, MOT

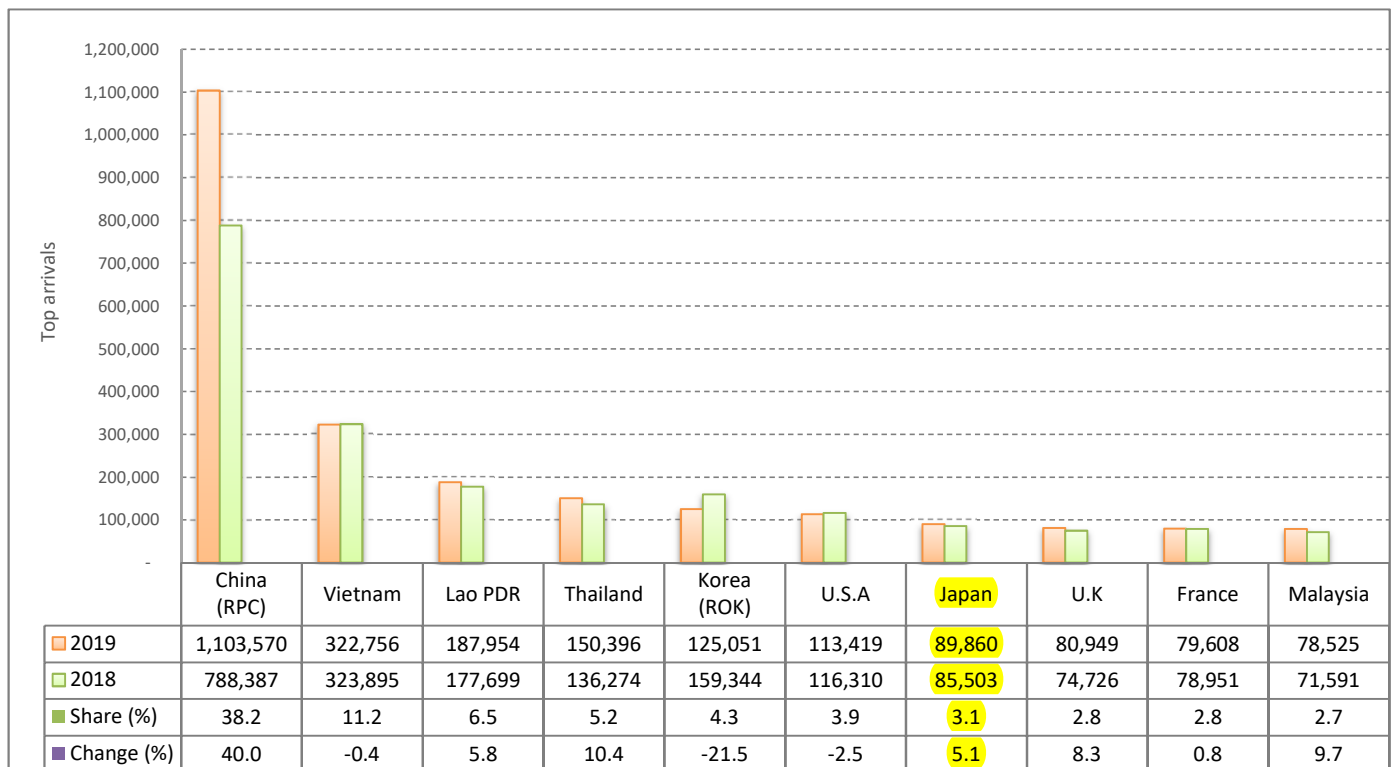
# CAMBODIA: TOURISM STATISTICS REPORT IN THE FIRST FIVE MONTHS 2019

## I. INBOUND TOURISM

### 1. International tourist arrivals in January - May 2019

	Inbound tourism			Share (%) 2019*	Change (%)	
	2017	2018	2019		18/17	2019*/18
<b>Air</b>	<b>1,382,555</b>	<b>1,726,944</b>	<b>2,018,935</b>	<b>69.9</b>	<b>24.9</b>	<b>16.9</b>
Phnom Penh Int'l Airport (PNH)	559,759	785,266	923,771	32.0	40.3	17.6
Siem Reap Int'l Airport (REP)	793,186	885,731	846,267	29.3	11.7	-4.5
Kong Keng (KOS)	29,610	55,947	248,897	8.6	88.9	344.9
<b>Land and Waterways</b>	<b>902,075</b>	<b>866,903</b>	<b>869,526</b>	<b>30.1</b>	<b>-3.9</b>	<b>0.3</b>
Land	816,894	794,314	785,774	27.2	-2.8	-1.1
Waterways	85,181	72,589	83,752	2.9	-14.8	15.4
<b>Total</b>	<b>2,284,630</b>	<b>2,593,847</b>	<b>2,888,461</b>	<b>100.0</b>	<b>13.5</b>	<b>11.4</b>

### 2. Top ten markets arrivals in January - May 2019



## II. OUTBOUND TOURISM

### Outbound tourism in January - May 2019

	Outbound tourism			Change (%)	
	2017	2018	2019	18/17	2019*/18
Cambodian Outbound Tourists	700,027	811,064	842,754	15.9	3.9
International Tourists Departure	2,139,490	2,503,223	2,650,350	17.0	5.9

## III. INTERNAL TOURISM

### Foreign visitor arrivals to the regions in January - May 2019

	Arrivals			Share (%) 2019*	Change (%)	
	2017	2018	2019		18/17	2019*/18
Phnom Penh & Surrounding	1,191,994	1,387,649	1,770,620	51.6	16.4	27.6
Siem Reap Angkor	1,092,636	1,206,188	1,117,841	32.6	10.4	-7.3
Coastal Areas	339,014	413,583	504,494	14.7	22.0	22.0
Eco-tourism Areas	33,737	34,648	38,432	1.1	2.7	10.9
<b>Total</b>	<b>2,657,381</b>	<b>3,042,068</b>	<b>3,431,387</b>	<b>100.0</b>	<b>14.5</b>	<b>12.8</b>

## International Tourist Arrivals to Cambodia by Country of Residence in January - May 2019

(by all means of transportation)

Regions Country of Residence	2018	2019			Total	Female	Share	Change
		Purposes of Visit					2019*	2019*/18
		Holiday	Business	Others			(%)	(%)
<b>Grand Total</b>	<b>2,593,847</b>	<b>2,238,751</b>	<b>567,357</b>	<b>82,353</b>	<b>2,888,461</b>	<b>1,175,035</b>	<b>100.0</b>	<b>11.4</b>
<b>Asia and the Pacific</b>	<b>2,009,902</b>	<b>1,740,960</b>	<b>545,842</b>	<b>43,023</b>	<b>2,329,825</b>	<b>917,687</b>	<b>80.7</b>	<b>15.9</b>
<b>ASEAN (Southeast Asia)</b>	<b>807,277</b>	<b>761,310</b>	<b>66,561</b>	<b>21,241</b>	<b>849,112</b>	<b>343,983</b>	<b>29.4</b>	<b>5.2</b>
Brunei Darussalam	305	524	10	15	549	279	0.0	80.0
Indonesia	22,063	14,534	10,310	866	25,710	7,340	0.9	16.5
Lao PDR	177,699	181,437	452	6,065	187,954	73,683	6.5	5.8
Malaysia	71,591	68,454	8,723	1,348	78,525	23,297	2.7	9.7
Myanmar	9,096	7,786	2,549	446	10,781	4,298	0.4	18.5
Philippines	35,546	33,685	6,292	785	40,762	24,348	1.4	14.7
Singapore	30,808	28,746	2,260	673	31,679	9,408	1.1	2.8
Thailand	136,274	133,068	11,588	5,740	150,396	51,616	5.2	10.4
Vietnam	323,895	293,076	24,377	5,303	322,756	149,714	11.2	-0.4
<b>Northeast Asia</b>	<b>1,096,431</b>	<b>898,390</b>	<b>471,886</b>	<b>11,382</b>	<b>1,381,658</b>	<b>536,814</b>	<b>47.8</b>	<b>26.0</b>
China	788,387	661,019	438,549	4,002	1,103,570	423,617	38.2	40.0
Hong Kong (China)	4,145	1,232	70	52	1,354	284	0.0	-67.3
<b>Japan</b>	<b>85,503</b>	<b>76,349</b>	<b>11,526</b>	<b>1,985</b>	<b>89,860</b>	<b>35,409</b>	<b>3.1</b>	<b>5.1</b>
Korea (ROK)	159,344	112,683	8,954	3,414	125,051	53,254	4.3	-21.5
Macau (China)	193	93	27	18	138	25	0.0	-28.5
Mongolia	372	581	32	31	644	297	0.0	73.1
Taiwan (China)	58,487	46,433	12,728	1,880	61,041	23,928	2.1	4.4
<b>Southern Asia</b>	<b>31,540</b>	<b>30,690</b>	<b>3,977</b>	<b>498</b>	<b>35,165</b>	<b>9,529</b>	<b>1.2</b>	<b>11.5</b>
Afghanistan	105	94	15	11	120	33	0.0	14.3
Bangladesh	1,203	1,745	359	75	2,179	239	0.1	81.1
Bhutan	60	101	7	17	125	45	0.0	108.3
India	25,781	24,283	2,640	184	27,107	7,955	0.9	5.1
Iran	595	542	23	24	589	217	0.0	-1.0
Nepal	1,106	1,214	219	114	1,547	470	0.1	39.9
Pakistan	1,253	1,455	251	36	1,742	213	0.1	39.0
Sri Lanka	1,437	1,256	463	37	1,756	357	0.1	22.2
<b>Oceania</b>	<b>67,611</b>	<b>49,661</b>	<b>3,173</b>	<b>9,628</b>	<b>62,462</b>	<b>26,811</b>	<b>2.2</b>	<b>-7.6</b>
Australia	56,781	42,319	2,717	7,553	52,589	22,657	1.8	-7.4
Fiji	108	115	33	34	182	54	0.0	68.5
New Zealand	10,722	7,227	423	2,041	9,691	4,100	0.3	-9.6
Other Asia & the Pacific	7,043	909	245	274	1,428	550	0.0	-79.7
<b>Europe</b>	<b>399,763</b>	<b>354,342</b>	<b>13,904</b>	<b>14,492</b>	<b>382,738</b>	<b>173,535</b>	<b>13.3</b>	<b>-4.3</b>
<b>Northern Europe</b>	<b>106,052</b>	<b>102,579</b>	<b>4,253</b>	<b>1,260</b>	<b>108,092</b>	<b>47,083</b>	<b>3.7</b>	<b>1.9</b>
Denmark	6,930	6,531	183	78	6,792	3,214	0.2	-2.0
Finland	3,871	3,027	128	60	3,215	1,419	0.1	-16.9
Iceland	504	415	14	21	450	209	0.0	-10.7
Ireland	5,284	4,495	258	59	4,812	2,023	0.2	-8.9
Norway	5,582	3,952	126	91	4,169	1,983	0.1	-25.3
Sweden	9,155	7,197	298	210	7,705	3,268	0.3	-15.8
United Kingdom	74,726	76,962	3,246	741	80,949	34,967	2.8	8.3
<b>Western Europe</b>	<b>168,061</b>	<b>145,212</b>	<b>6,531</b>	<b>11,776</b>	<b>163,519</b>	<b>71,271</b>	<b>5.7</b>	<b>-2.7</b>
Austria	5,565	5,242	126	117	5,485	2,510	0.2	-1.4
Belgium	8,406	7,846	343	309	8,498	3,941	0.3	1.1
France	78,951	66,003	3,960	9,645	79,608	34,540	2.8	0.8
Germany	51,415	45,496	1,118	755	47,369	20,358	1.6	-7.9
Luxembourg	383	281	23	20	324	133	0.0	-15.4
Monaco	47	22	7	9	38	9	0.0	-19.1
Netherlands	12,991	11,982	568	348	12,898	5,748	0.4	-0.7
Switzerland	10,303	8,340	386	573	9,299	4,032	0.3	-9.7
<b>Central / Eastern Europe</b>	<b>71,676</b>	<b>59,286</b>	<b>1,544</b>	<b>798</b>	<b>61,628</b>	<b>32,004</b>	<b>2.1</b>	<b>-14.0</b>
Bulgaria	1,369	1,610	46	45	1,701	719	0.1	24.3
Czech Republic	4,272	3,671	55	51	3,777	1,661	0.1	-11.6
Estonia	1,577	649	32	20	701	310	0.0	-55.5
Hungary	3,115	3,454	62	29	3,545	1,742	0.1	13.8
Kazakhstan	1,091	986	149	39	1,174	551	0.0	7.6
Kyrgyzstan	159	126	19	15	160	96	0.0	0.6
Latvia	772	441	33	14	488	252	0.0	-36.8
Lithuania	1,351	1,206	24	14	1,244	676	0.0	-7.9
Poland	10,344	9,798	121	53	9,972	4,938	0.3	-3.6
Romania	1,893	1,756	80	68	1,904	955	0.1	0.6
Russian Federation	39,716	29,780	614	339	30,733	16,765	1.1	-22.6
Slovakia	2,026	1,606	46	38	1,690	796	0.1	-16.6
Ukraine	3,709	3,989	221	38	4,248	2,418	0.1	14.5
Uzbekistan	282	214	42	35	291	125	0.0	3.2

Source: Tourism Statistics Department, MOT.

## International Tourist Arrivals to Cambodia by Country of Residence in January - May 2019

(by all means of transportation)

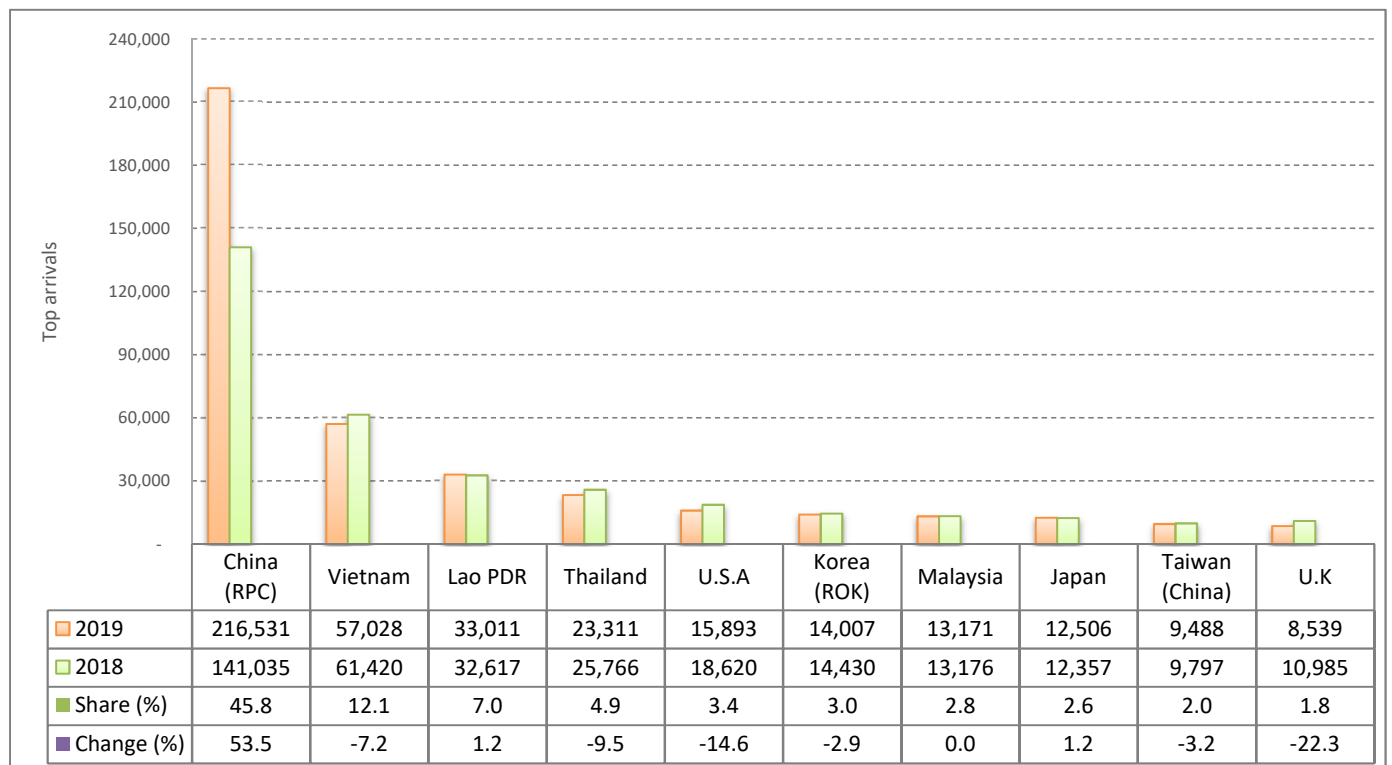
Regions Country of Residence	2018	2019			Total	Female	Share	Change
		Purposes of Visit					2019*	2019*/18
		Holiday	Business	Others			(%)	(%)
<b>Grand Total</b>	<b>2,593,847</b>	<b>2,238,751</b>	<b>567,357</b>	<b>82,353</b>	<b>2,888,461</b>	<b>1,175,035</b>	<b>100.0</b>	<b>11.4</b>
<b>Southern Europe</b>	<b>37,989</b>	<b>35,715</b>	<b>1,213</b>	<b>429</b>	<b>37,357</b>	<b>17,664</b>	<b>1.3</b>	<b>-1.7</b>
Croatia	1,116	794	39	24	857	396	0.0	-23.2
Greece	930	842	43	33	918	399	0.0	-1.3
Italy	16,974	17,683	577	165	18,425	8,663	0.6	8.5
Malta	188	205	11	11	227	95	0.0	20.7
Portugal	3,076	3,453	86	34	3,573	1,803	0.1	16.2
Serbia	673	646	26	31	703	396	0.0	4.5
Slovenia	840	806	45	24	875	319	0.0	4.2
Spain	14,192	11,286	386	107	11,779	5,593	0.4	-17.0
<b>East Mediterranean Europe</b>	<b>11,820</b>	<b>11,127</b>	<b>255</b>	<b>144</b>	<b>11,526</b>	<b>5,265</b>	<b>0.4</b>	<b>-2.5</b>
Israel	7,607	8,462	102	52	8,616	4,021	0.3	13.3
Turkey	4,213	2,665	153	92	2,910	1,244	0.1	-30.9
Other Europe	4,165	423	108	85	616	248	0.0	-85.2
<b>Americas</b>	<b>177,232</b>	<b>136,585</b>	<b>6,720</b>	<b>24,462</b>	<b>167,767</b>	<b>80,694</b>	<b>5.8</b>	<b>-5.3</b>
<b>North America</b>	<b>152,150</b>	<b>119,080</b>	<b>6,304</b>	<b>24,153</b>	<b>149,537</b>	<b>70,841</b>	<b>5.2</b>	<b>-1.7</b>
Canada	32,104	27,227	1,438	3,445	32,110	14,834	1.1	0.0
Mexico	3,736	3,871	71	66	4,008	2,063	0.1	7.3
United States of America	116,310	87,982	4,795	20,642	113,419	53,944	3.9	-2.5
<b>Central America</b>	<b>793</b>	<b>518</b>	<b>37</b>	<b>32</b>	<b>587</b>	<b>290</b>	<b>0.0</b>	<b>-26.0</b>
Costa Rica	591	390	13	15	418	195	0.0	-29.3
Honduras	85	77	15	8	100	60	0.0	17.6
Jamaica	117	51	9	9	69	35	0.0	-41.0
<b>South America</b>	<b>22,417</b>	<b>16,777</b>	<b>318</b>	<b>234</b>	<b>17,329</b>	<b>9,434</b>	<b>0.6</b>	<b>-22.7</b>
Argentina	7,837	3,667	32	31	3,730	1,964	0.1	-52.4
Brazil	6,919	5,546	91	45	5,682	3,049	0.2	-17.9
Chile	3,152	3,042	78	30	3,150	1,673	0.1	-0.1
Colombia	2,152	1,678	55	39	1,772	967	0.1	-17.7
Ecuador	325	260	14	26	300	152	0.0	-7.7
Peru	913	669	14	22	705	458	0.0	-22.8
Uruguay	954	1,735	12	21	1,768	1,048	0.1	85.3
Venezuela	165	180	22	20	222	123	0.0	34.5
Other America	1,872	210	61	43	314	129	0.0	-83.2
<b>Africa</b>	<b>4,978</b>	<b>4,802</b>	<b>700</b>	<b>196</b>	<b>5,698</b>	<b>2,576</b>	<b>0.2</b>	<b>14.5</b>
<b>North Africa</b>	<b>684</b>	<b>957</b>	<b>36</b>	<b>28</b>	<b>1,021</b>	<b>478</b>	<b>0.0</b>	<b>49.3</b>
Morocco	433	324	17	9	350	134	0.0	-19.2
Sudan	92	65	7	9	81	24	0.0	-12.0
Tunisia	159	568	12	10	590	320	0.0	271.1
<b>Subsaharan Africa</b>	<b>3,968</b>	<b>3,757</b>	<b>638</b>	<b>146</b>	<b>4,541</b>	<b>2,047</b>	<b>0.2</b>	<b>14.4</b>
Cameroon	100	106	18	19	143	38	0.0	43.0
Congo	42	86	9	8	103	27	0.0	145.2
Ghana	83	127	19	15	161	21	0.0	94.0
Kenya	187	143	19	26	188	94	0.0	0.5
Liberia	44	141	9	9	159	31	0.0	261.4
Nigeria	257	79	167	26	272	38	0.0	5.8
South Africa	3,095	2,743	362	19	3,124	1,616	0.1	0.9
Tanzania	44	108	9	7	124	25	0.0	181.8
Uganda	46	155	14	11	180	93	0.0	291.3
Zimbabwe	70	69	12	6	87	64	0.0	24.3
Other Africa	326	88	26	22	136	51	0.0	-58.3
<b>Middle East</b>	<b>1,972</b>	<b>2,062</b>	<b>191</b>	<b>180</b>	<b>2,433</b>	<b>543</b>	<b>0.1</b>	<b>23.4</b>
Egypt	343	377	34	14	425	102	0.0	23.9
Iraq	129	105	16	54	175	20	0.0	35.7
Jordan	217	212	33	13	258	47	0.0	18.9
Kuwait	206	153	19	23	195	46	0.0	-5.3
Oman	80	120	7	7	134	30	0.0	67.5
Palestine	57	31	7	6	44	4	0.0	-22.8
Qatar	52	30	9	6	45	4	0.0	-13.5
Saudi Arabia	115	132	10	12	154	23	0.0	33.9
Syria	201	229	13	9	251	51	0.0	24.9
United Arab Emirates	97	348	20	9	377	142	0.0	288.7
Yemen	208	263	10	14	287	40	0.0	38.0
Other Middle East	267	62	13	13	88	34	0.0	-67.0

**I. INBOUND TOURISM**

1. International tourist arrivals in May 2019

	Inbound tourism			Share (%) 2019*	Change (%)	
	2017	2018	2019		18/17	2019*/18
<b>Air</b>	<b>217,354</b>	<b>271,761</b>	<b>342,877</b>	<b>72.5</b>	<b>25.0</b>	<b>26.2</b>
Phnom Penh Int'l Airport (PNH)	104,084	142,286	164,985	34.9	36.7	16.0
Siem Reap Int'l Airport (REP)	110,706	116,930	116,193	24.6	5.6	-0.6
Kong Keng (KOS)	2,564	12,545	61,699	13.0	389.3	391.8
<b>Land and Waterways</b>	<b>151,455</b>	<b>147,410</b>	<b>130,075</b>	<b>27.5</b>	<b>-2.7</b>	<b>-11.8</b>
Land	146,416	140,481	126,213	26.7	-4.1	-10.2
Waterways	5,039	6,929	3,862	0.8	37.5	-44.3
<b>Total</b>	<b>368,809</b>	<b>419,171</b>	<b>472,952</b>	<b>100.0</b>	<b>13.7</b>	<b>12.8</b>

2. Top ten markets arrivals in May 2019



**II. OUTBOUND TOURISM**

Outbound tourism in May 2019

	Outbound tourism			Change (%)	
	2017	2018	2019	18/17	2019*/18
Cambodian Outbound Tourists	154,811	158,498	182,390	2.4	15.1
International Tourists Departure	375,228	419,564	481,321	11.8	14.7

**III. INTERNAL TOURISM**

Foreign visitor arrivals to the regions in May 2019

	Arrivals			Share (%) 2019*	Change (%)	
	2017	2018	2019		18/17	2019*/18
Phnom Penh & Surrounding	221,798	263,975	328,416	57.5	19.0	24.4
Siem Reap Angkor	147,011	155,196	144,536	25.3	5.6	-6.9
Coastal Areas	54,392	82,150	92,391	16.2	51.0	12.5
Eco-tourism Areas	5,381	6,238	6,073	1.1	15.9	-2.6
<b>Total</b>	<b>428,582</b>	<b>507,559</b>	<b>571,416</b>	<b>100.0</b>	<b>18.4</b>	<b>12.6</b>

## International Tourist Arrivals to Cambodia by Country of Residence in May 2019

(by all means of transportation)

Regions Country of Residence	2018	2019			Total	Female	Share	Change
		Purposes of Visit					2019*	2019*/18
		Holiday	Business	Others			(%)	(%)
<b>Grand Total</b>	<b>419,171</b>	<b>336,175</b>	<b>125,880</b>	<b>10,897</b>	<b>472,952</b>	<b>194,407</b>	<b>100.0</b>	<b>12.8</b>
<b>Asia and the Pacific</b>	<b>346,117</b>	<b>288,885</b>	<b>121,657</b>	<b>4,291</b>	<b>414,833</b>	<b>168,300</b>	<b>87.7</b>	<b>19.9</b>
<b>ASEAN (Southeast Asia)</b>	<b>151,308</b>	<b>132,818</b>	<b>12,722</b>	<b>1,095</b>	<b>146,635</b>	<b>73,190</b>	<b>31.0</b>	<b>-3.1</b>
Brunei Darussalam	35	46	2	2	50	20	0.0	42.9
Indonesia	3,799	2,294	2,134	39	4,467	1,262	0.9	17.6
Lao PDR	32,617	32,930	39	42	33,011	22,666	7.0	1.2
Malaysia	13,176	11,219	1,848	104	13,171	4,071	2.8	0.0
Myanmar	1,397	972	603	18	1,593	714	0.3	14.0
Philippines	7,210	6,807	1,607	59	8,473	5,094	1.8	17.5
Singapore	5,888	5,024	468	39	5,531	1,788	1.2	-6.1
Thailand	25,766	20,760	2,120	431	23,311	9,380	4.9	-9.5
Vietnam	61,420	52,766	3,901	361	57,028	28,195	12.1	-7.2
<b>Northeast Asia</b>	<b>178,285</b>	<b>143,654</b>	<b>107,373</b>	<b>1,663</b>	<b>252,690</b>	<b>89,476</b>	<b>53.4</b>	<b>41.7</b>
China	141,035	115,820	100,040	671	216,531	75,618	45.8	53.5
Hong Kong (China)	547	58	19	7	84	20	0.0	-84.6
Japan	12,357	9,817	2,405	284	12,506	4,682	2.6	1.2
Korea (ROK)	14,430	11,458	2,077	472	14,007	5,647	3.0	-2.9
Macau (China)	76	6	3	5	14	3	0.0	-81.6
Mongolia	43	51	6	3	60	27	0.0	39.5
Taiwan (China)	9,797	6,444	2,823	221	9,488	3,479	2.0	-3.2
<b>Southern Asia</b>	<b>5,977</b>	<b>5,798</b>	<b>858</b>	<b>124</b>	<b>6,780</b>	<b>1,896</b>	<b>1.4</b>	<b>13.4</b>
Afghanistan	22	9	4	3	16	1	0.0	-27.3
Bangladesh	230	272	80	11	363	40	0.1	57.8
Bhutan	12	4	1	2	7	3	0.0	-41.7
India	4,913	4,722	579	36	5,337	1,611	1.1	8.6
Iran	52	63	2	13	78	25	0.0	50.0
Nepal	194	245	44	51	340	99	0.1	75.3
Pakistan	258	203	38	4	245	27	0.1	-5.0
Sri Lanka	296	280	110	4	394	90	0.1	33.1
<b>Oceania</b>	<b>9,981</b>	<b>6,440</b>	<b>639</b>	<b>1,388</b>	<b>8,467</b>	<b>3,651</b>	<b>1.8</b>	<b>-15.2</b>
Australia	8,381	5,319	544	1,098	6,961	3,002	1.5	-16.9
Fiji	23	23	10	7	40	17	0.0	73.9
New Zealand	1,577	1,098	85	283	1,466	632	0.3	-7.0
Other Asia & the Pacific	566	175	65	21	261	87	0.1	-53.9
<b>Europe</b>	<b>45,354</b>	<b>29,757</b>	<b>2,721</b>	<b>2,213</b>	<b>34,691</b>	<b>15,305</b>	<b>7.3</b>	<b>-23.5</b>
<b>Northern Europe</b>	<b>14,025</b>	<b>9,727</b>	<b>804</b>	<b>170</b>	<b>10,701</b>	<b>4,433</b>	<b>2.3</b>	<b>-23.7</b>
Denmark	638	470	27	9	506	221	0.1	-20.7
Finland	337	169	25	11	205	79	0.0	-39.2
Iceland	84	17	2	2	21	6	0.0	-75.0
Ireland	840	641	64	8	713	288	0.2	-15.1
Norway	422	209	22	14	245	93	0.1	-41.9
Sweden	719	381	61	30	472	166	0.1	-34.4
United Kingdom	10,985	7,840	603	96	8,539	3,580	1.8	-22.3
<b>Western Europe</b>	<b>19,422</b>	<b>11,771</b>	<b>1,314</b>	<b>1,869</b>	<b>14,954</b>	<b>6,418</b>	<b>3.2</b>	<b>-23.0</b>
Austria	581	263	17	23	303	115	0.1	-47.8
Belgium	917	580	70	44	694	263	0.1	-24.3
France	9,548	5,612	814	1,593	8,019	3,542	1.7	-16.0
Germany	5,512	3,117	221	114	3,452	1,420	0.7	-37.4
Luxembourg	35	20	2	1	23	11	0.0	-34.3
Monaco	6	3	1	1	5	1	0.0	-16.7
Netherlands	1,788	1,502	113	40	1,655	757	0.3	-7.4
Switzerland	1,035	674	76	53	803	309	0.2	-22.4
<b>Central / Eastern Europe</b>	<b>6,050</b>	<b>4,017</b>	<b>281</b>	<b>87</b>	<b>4,385</b>	<b>2,378</b>	<b>0.9</b>	<b>-27.5</b>
Bulgaria	121	49	3	4	56	27	0.0	-53.7
Czech Republic	306	199	11	2	212	111	0.0	-30.7
Estonia	82	27	2	3	32	11	0.0	-61.0
Hungary	223	111	10	4	125	52	0.0	-43.9
Kazakhstan	141	75	31	5	111	67	0.0	-21.3
Kyrgyzstan	55	11	2	2	15	5	0.0	-72.7
Latvia	72	34	8	3	45	24	0.0	-37.5
Lithuania	119	52	3	2	57	29	0.0	-52.1
Poland	1,089	487	19	7	513	274	0.1	-52.9
Romania	179	109	12	9	130	65	0.0	-27.4
Russian Federation	3,021	2,387	120	38	2,545	1,420	0.5	-15.8
Slovakia	157	130	8	3	141	62	0.0	-10.2
Ukraine	446	322	48	4	374	212	0.1	-16.1
Uzbekistan	39	24	4	1	29	19	0.0	-25.6

## International Tourist Arrivals to Cambodia by Country of Residence in May 2019

(by all means of transportation)

Regions Country of Residence	2018	2019			Total	Female	Share	Change
		Purposes of Visit					2019*	2019*/18
		Holiday	Business	Others			(%)	(%)
<b>Grand Total</b>	<b>419,171</b>	<b>336,175</b>	<b>125,880</b>	<b>10,897</b>	<b>472,952</b>	<b>194,407</b>	<b>100.0</b>	<b>12.8</b>
<b>Southern Europe</b>	<b>4,378</b>	<b>3,353</b>	<b>246</b>	<b>59</b>	<b>3,658</b>	<b>1,697</b>	<b>0.8</b>	<b>-16.4</b>
Croatia	106	28	4	1	33	17	0.0	-68.9
Greece	54	123	5	4	132	55	0.0	144.4
Italy	1,541	1,010	133	20	1,163	478	0.2	-24.5
Malta	14	14	1	1	16	9	0.0	14.3
Portugal	355	346	15	4	365	182	0.1	2.8
Serbia	42	37	6	2	45	20	0.0	7.1
Slovenia	74	53	5	3	61	22	0.0	-17.6
Spain	2,192	1,742	77	24	1,843	914	0.4	-15.9
<b>East Mediterranean Europe</b>	<b>1,070</b>	<b>842</b>	<b>52</b>	<b>15</b>	<b>909</b>	<b>348</b>	<b>0.2</b>	<b>-15.0</b>
Israel	752	632	27	6	665	263	0.1	-11.6
Turkey	318	210	25	9	244	85	0.1	-23.3
Other Europe	409	47	24	13	84	31	0.0	-79.5
<b>Americas</b>	<b>26,679</b>	<b>16,700</b>	<b>1,331</b>	<b>4,311</b>	<b>22,342</b>	<b>10,416</b>	<b>4.7</b>	<b>-16.3</b>
<b>North America</b>	<b>24,029</b>	<b>14,451</b>	<b>1,261</b>	<b>4,269</b>	<b>19,981</b>	<b>9,232</b>	<b>4.2</b>	<b>-16.8</b>
Canada	4,736	2,754	256	447	3,457	1,592	0.7	-27.0
Mexico	673	616	13	2	631	339	0.1	-6.2
United States of America	18,620	11,081	992	3,820	15,893	7,301	3.4	-14.6
<b>Central America</b>	<b>128</b>	<b>54</b>	<b>5</b>	<b>4</b>	<b>63</b>	<b>27</b>	<b>0.0</b>	<b>-50.8</b>
Costa Rica	39	44	1	2	47	20	0.0	20.5
Honduras	19	9	3	1	13	6	0.0	-31.6
Jamaica	70	1	1	1	3	1	0.0	-95.7
<b>South America</b>	<b>2,387</b>	<b>2,172</b>	<b>53</b>	<b>30</b>	<b>2,255</b>	<b>1,147</b>	<b>0.5</b>	<b>-5.5</b>
Argentina	600	302	8	1	311	150	0.1	-48.2
Brazil	727	576	14	8	598	264	0.1	-17.7
Chile	437	348	6	4	358	178	0.1	-18.1
Colombia	346	225	14	5	244	135	0.1	-29.5
Ecuador	37	36	1	3	40	16	0.0	8.1
Peru	163	91	1	2	94	51	0.0	-42.3
Uruguay	48	555	4	3	562	330	0.1	1070.8
Venezuela	29	39	5	4	48	23	0.0	65.5
Other America	135	23	12	8	43	10	0.0	-68.1
<b>Africa</b>	<b>746</b>	<b>643</b>	<b>134</b>	<b>40</b>	<b>817</b>	<b>348</b>	<b>0.2</b>	<b>9.5</b>
<b>North Africa</b>	<b>81</b>	<b>72</b>	<b>10</b>	<b>8</b>	<b>90</b>	<b>31</b>	<b>0.0</b>	<b>11.1</b>
Morocco	43	35	5	3	43	12	0.0	0.0
Sudan	21	15	1	2	18	6	0.0	-14.3
Tunisia	17	22	4	3	29	13	0.0	70.6
<b>Subsaharan Africa</b>	<b>642</b>	<b>562</b>	<b>117</b>	<b>28</b>	<b>707</b>	<b>312</b>	<b>0.1</b>	<b>10.1</b>
Cameroon	19	16	3	3	22	9	0.0	15.8
Congo	8	14	2	2	18	3	0.0	125.0
Ghana	33	13	2	3	18	1	0.0	-45.5
Kenya	39	22	5	4	31	16	0.0	-20.5
Liberia	15	19	3	2	24	5	0.0	60.0
Nigeria	45	17	25	6	48	12	0.0	6.7
South Africa	448	428	71	5	504	245	0.1	12.5
Tanzania	4	6	1	1	8	4	0.0	100.0
Uganda	13	16	3	1	20	9	0.0	53.8
Zimbabwe	18	11	2	1	14	8	0.0	-22.2
Other Africa	23	9	7	4	20	5	0.0	-13.0
<b>Middle East</b>	<b>275</b>	<b>190</b>	<b>37</b>	<b>42</b>	<b>269</b>	<b>38</b>	<b>0.1</b>	<b>-2.2</b>
Egypt	43	40	10	3	53	6	0.0	23.3
Iraq	12	21	4	20	45	4	0.0	275.0
Jordan	37	23	5	2	30	2	0.0	-18.9
Kuwait	23	13	4	3	20	3	0.0	-13.0
Oman	8	6	1	1	8	1	0.0	0.0
Palestine	15	8	1	2	11	1	0.0	-26.7
Qatar	8	4	1	1	6	1	0.0	-25.0
Saudi Arabia	13	9	1	2	12	2	0.0	-7.7
Syria	44	39	3	1	43	7	0.0	-2.3
United Arab Emirates	15	3	2	2	7	1	0.0	-53.3
Yemen	44	18	2	3	23	7	0.0	-47.7
Other Middle East	13	6	3	2	11	3	0.0	-15.4