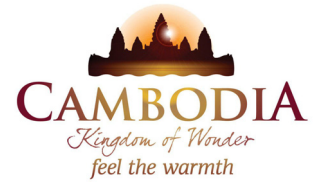




KINGDOM OF CAMBODIA  
NATION RELIGION KING



# TOURISM STATISTICS REPORT

# June 2019

**MINISTRY OF TOURISM**  
NATIONAL INSTITUTE OF TOURISM  
TOURISM STATISTICS DEPARTMENT  
No. A3, Street 169, Sangkat Veal Vong, Khan 7 Makara, Phnom Penh, Cambodia.  
Fax: +855 23 885003  
E-mail: [kong@tourism.gov.kh](mailto:kong@tourism.gov.kh)  
Website: [www.tourism.gov.kh](http://www.tourism.gov.kh)

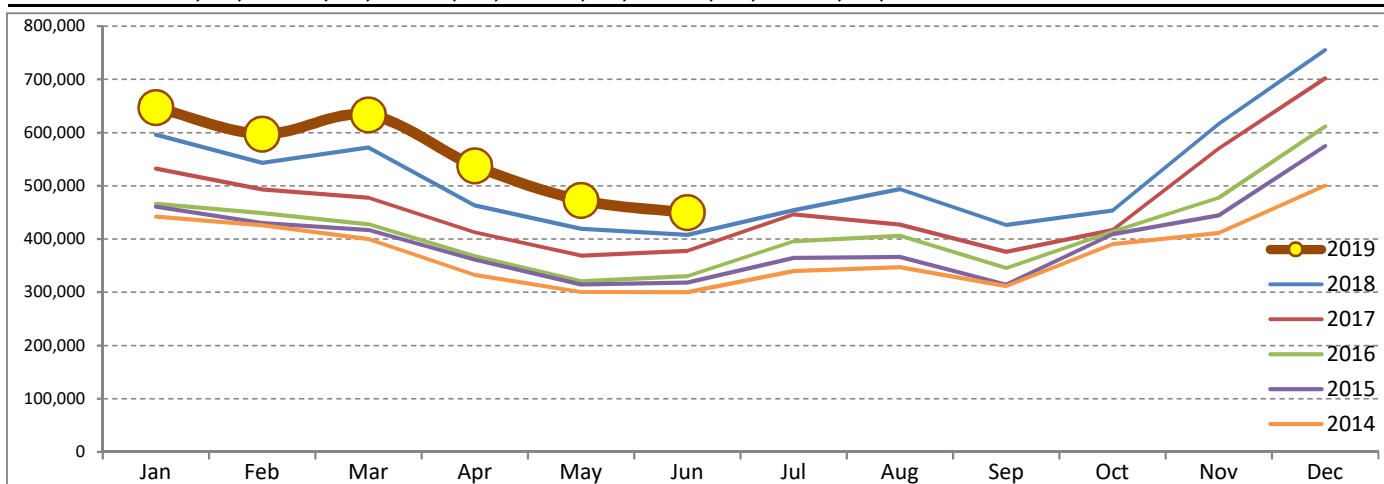
# Tourism Highlights

## Int'l Tourist Arrivals, Average Length of Stays, Hotel Occupancy & Int'l Tourism Receipts 1993 - 2018

Years	Int'l Tourist Arrivals		Average Length	Hotel Occupancy	Int'l Tourism Receipts
	Number	Change (%)	of Stays (Days)	(%)	(Million US\$)
1993	118,183	-	N/A	N/A	N/A
1994	176,617	49.4	N/A	N/A	N/A
1995	219,680	24.4	8.00	37.0	100
1996	260,489	18.6	7.50	40.0	118
1997	218,843	-16.0	6.40	30.0	103
1998	286,524	30.9	5.20	40.0	166
1999	367,743	28.3	5.50	44.0	190
2000	466,365	26.8	5.50	45.0	228
2001	604,919	29.7	5.50	48.0	304
2002	786,524	30.0	5.80	50.0	379
2003	701,014	-10.9	5.50	50.0	347
2004	1,055,202	50.5	6.30	52.0	578
2005	1,421,615	34.7	6.30	52.0	832
2006	1,700,041	19.6	6.50	54.8	1,049
2007	2,015,128	18.5	6.50	54.8	1,400
2008	2,125,465	5.5	6.65	62.7	1,595
2009	2,161,577	1.7	6.45	63.6	1,561
2010	2,508,289	16.0	6.45	65.7	1,786
2011	2,881,862	14.9	6.50	66.2	1,912
2012	3,584,307	24.4	6.30	68.5	2,210
2013	4,210,165	17.5	6.75	69.5	2,547
2014	4,502,775	7.0	6.50	67.6	2,736
2015	4,775,231	6.1	6.80	70.2	3,012
2016	5,011,712	5.0	6.30	68.9	3,212
2017	5,602,157	11.8	6.60	71.3	3,638
2018	6,201,077	10.7	7.00	72.2	4,375

### International Tourist Arrivals to Cambodia

Months	2014	2015	2016	2017	2018	2019	Change (%)				
							15/14	16/15	17/16	18/17	2019*/18
<b>Q1</b>	<b>1,267,922</b>	<b>1,307,836</b>	<b>1,342,477</b>	<b>1,502,896</b>	<b>1,711,253</b>	<b>1,877,853</b>	<b>3.1</b>	<b>2.6</b>	<b>11.9</b>	<b>13.9</b>	<b>9.7</b>
Jan	442,045	460,577	466,086	532,206	596,241	647,206	4.2	1.2	14.2	12.0	8.5
Feb	425,801	430,207	448,468	493,316	542,937	597,483	1.0	4.2	10.0	10.1	10.0
Mar	400,076	417,052	427,923	477,374	572,075	633,164	4.2	2.6	11.6	19.8	10.7
<b>Q2</b>	<b>933,446</b>	<b>994,154</b>	<b>1,018,455</b>	<b>1,159,783</b>	<b>1,290,407</b>	<b>1,460,621</b>	<b>6.5</b>	<b>2.4</b>	<b>13.9</b>	<b>11.3</b>	<b>13.2</b>
Apr	332,690	361,139	367,684	412,925	463,423	537,656	8.6	1.8	12.3	12.2	16.0
May	300,302	314,748	320,601	368,809	419,171	472,952	4.8	1.9	15.0	13.7	12.8
Jun	300,454	318,267	330,170	378,049	407,813	450,013	5.9	3.7	14.5	7.9	10.3
<b>Q3</b>	<b>998,690</b>	<b>1,044,880</b>	<b>1,147,483</b>	<b>1,250,082</b>	<b>1,374,373</b>	<b>0</b>	<b>4.6</b>	<b>9.8</b>	<b>8.9</b>	<b>9.9</b>	
Jul	340,091	364,325	395,761	446,627	454,056		7.1	8.6	12.9	1.7	
Aug	347,211	366,096	406,214	427,224	494,043		5.4	11.0	5.2	15.6	
Sep	311,388	314,459	345,508	376,231	426,274		1.0	9.9	8.9	13.3	
<b>Q4</b>	<b>1,302,717</b>	<b>1,428,361</b>	<b>1,503,297</b>	<b>1,689,396</b>	<b>1,825,044</b>	<b>0</b>	<b>9.6</b>	<b>5.2</b>	<b>12.4</b>	<b>8.0</b>	
Oct	390,637	408,922	414,077	417,039	453,370		4.7	1.3	0.7	8.7	
Nov	411,501	444,640	477,686	570,471	616,549		8.1	7.4	19.4	8.1	
Dec	500,579	574,799	611,534	701,886	755,125		14.8	6.4	14.8	7.6	
<b>Total</b>	<b>4,502,775</b>	<b>4,775,231</b>	<b>5,011,712</b>	<b>5,602,157</b>	<b>6,201,077</b>	<b>3,338,474</b>	<b>6.1</b>	<b>5.0</b>	<b>11.8</b>	<b>10.7</b>	<b>11.2</b>



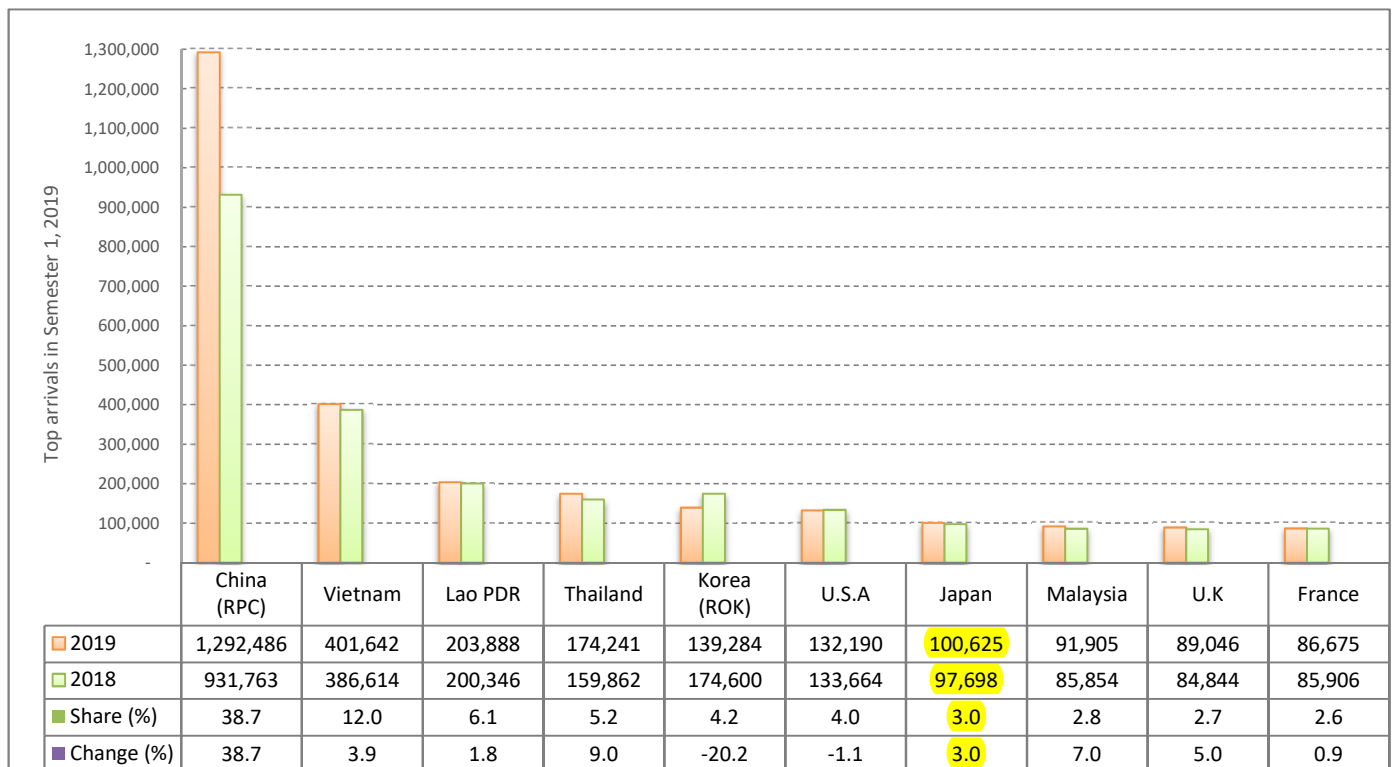
Source: Tourism Statistics Department, MOT

**I. INBOUND TOURISM**

1. International tourist arrivals in January - June 2019

	Inbound tourism			Share (%) 2019*	Change (%)	
	2017	2018	2019		18/17	2019*/18
<b>Air</b>	<b>1,605,664</b>	<b>2,004,123</b>	<b>2,353,947</b>	<b>70.5</b>	<b>24.8</b>	<b>17.5</b>
Phnom Penh Int'l Airport (PNH)	667,529	927,542	1,081,960	32.4	39.0	16.6
Siem Reap Int'l Airport (REP)	904,384	1,006,504	951,353	28.5	11.3	-5.5
Kong Keng (KOS)	33,751	70,077	320,634	9.6	107.6	357.5
<b>Land and Waterways</b>	<b>1,057,015</b>	<b>997,537</b>	<b>984,527</b>	<b>29.5</b>	<b>-5.6</b>	<b>-1.3</b>
Land	967,490	918,609	897,615	26.9	-5.1	-2.3
Waterways	89,525	78,928	86,912	2.6	-11.8	10.1
<b>Total</b>	<b>2,662,679</b>	<b>3,001,660</b>	<b>3,338,474</b>	<b>100.0</b>	<b>12.7</b>	<b>11.2</b>

2. Top ten markets arrivals in January - June 2019



**II. OUTBOUND TOURISM**

Outbound tourism in January - June 2019

	Outbound tourism			Change (%)	
	2017	2018	2019	18/17	2019*/18
Cambodian Outbound Tourists	842,008	964,276	1,005,067	14.5	4.2
International Tourists Departure	2,544,911	2,892,692	3,104,546	13.7	7.3

**III. INTERNAL TOURISM**

Foreign visitor arrivals to the regions in January - June 2019

	Arrivals			Share (%) 2019*	Change (%)	
	2017	2018	2019		18/17	2019*/18
Phnom Penh & Surrounding	1,429,283	1,644,689	2,094,031	52.6	15.1	27.3
Siem Reap Angkor	1,233,396	1,356,961	1,244,443	31.2	10.0	-8.3
Coastal Areas	389,741	470,939	598,046	15.0	20.8	27.0
Eco-tourism Areas	39,368	42,056	46,192	1.2	6.8	9.8
<b>Total</b>	<b>3,091,788</b>	<b>3,514,645</b>	<b>3,982,712</b>	<b>100.0</b>	<b>13.7</b>	<b>13.3</b>

## International Tourist Arrivals to Cambodia by Country of Residence in January - June 2019

(by all means of transportation)

Regions Country of Residence	2018		2019			Share		Change
	Purposes of Visit			Total	Female	2019*	2019*/18	
	Holiday	Business	Others					(%)
<b>Grand Total</b>	<b>3,001,660</b>	<b>2,545,483</b>	<b>696,557</b>	<b>96,434</b>	<b>3,338,474</b>	<b>1,364,331</b>	<b>100.0</b>	<b>11.2</b>
<b>Asia and the Pacific</b>	<b>2,351,044</b>	<b>2,005,022</b>	<b>671,034</b>	<b>47,758</b>	<b>2,723,814</b>	<b>1,081,937</b>	<b>81.6</b>	<b>15.9</b>
<b>ASEAN (Southeast Asia)</b>	<b>948,754</b>	<b>901,783</b>	<b>78,530</b>	<b>22,610</b>	<b>1,002,923</b>	<b>422,105</b>	<b>30.0</b>	<b>5.7</b>
Brunei Darussalam	367	613	11	17	641	319	0.0	74.7
Indonesia	25,618	17,330	12,539	940	30,809	8,890	0.9	20.3
Lao PDR	200,346	197,196	528	6,164	203,888	81,755	6.1	1.8
Malaysia	85,854	79,685	10,695	1,525	91,905	27,562	2.8	7.0
Myanmar	10,647	8,544	3,168	472	12,184	4,957	0.4	14.4
Philippines	42,628	40,919	7,569	848	49,336	29,512	1.5	15.7
Singapore	36,818	34,813	2,727	737	38,277	11,844	1.1	4.0
Thailand	159,862	153,825	14,010	6,406	174,241	61,212	5.2	9.0
Vietnam	386,614	368,858	27,283	5,501	401,642	196,054	12.0	3.9
<b>Northeast Asia</b>	<b>1,279,967</b>	<b>1,008,599</b>	<b>583,516</b>	<b>13,214</b>	<b>1,605,329</b>	<b>617,033</b>	<b>48.1</b>	<b>25.4</b>
China	931,763	744,782	542,989	4,715	1,292,486	490,670	38.7	38.7
Hong Kong (China)	6,689	1,241	85	55	1,381	289	0.0	-79.4
<b>Japan</b>	<b>97,698</b>	<b>84,236</b>	<b>14,073</b>	<b>2,316</b>	<b>100,625</b>	<b>39,143</b>	<b>3.0</b>	<b>3.0</b>
Korea (ROK)	174,600	124,457	10,968	3,859	139,284	58,806	4.2	-20.2
Macau (China)	280	97	29	19	145	27	0.0	-48.2
Mongolia	415	634	37	32	703	325	0.0	69.4
Taiwan (China)	68,522	53,152	15,335	2,218	70,705	27,773	2.1	3.2
<b>Southern Asia</b>	<b>37,074</b>	<b>36,846</b>	<b>4,960</b>	<b>597</b>	<b>42,403</b>	<b>11,338</b>	<b>1.3</b>	<b>14.4</b>
Afghanistan	151	115	16	13	144	39	0.0	-4.6
Bangladesh	1,408	2,243	432	83	2,758	319	0.1	95.9
Bhutan	107	120	9	23	152	56	0.0	42.1
India	30,233	28,936	3,363	219	32,518	9,420	1.0	7.6
Iran	661	609	28	26	663	233	0.0	0.3
Nepal	1,327	1,512	264	125	1,901	573	0.1	43.3
Pakistan	1,472	1,821	311	56	2,188	281	0.1	48.6
Sri Lanka	1,715	1,490	537	52	2,079	417	0.1	21.2
<b>Oceania</b>	<b>77,618</b>	<b>56,784</b>	<b>3,751</b>	<b>10,994</b>	<b>71,529</b>	<b>30,839</b>	<b>2.1</b>	<b>-7.8</b>
Australia	65,050	48,167	3,216	8,666	60,049	25,971	1.8	-7.7
Fiji	130	122	39	35	196	60	0.0	50.8
New Zealand	12,438	8,495	496	2,293	11,284	4,808	0.3	-9.3
Other Asia & the Pacific	7,631	1,010	277	343	1,630	622	0.0	-78.6
<b>Europe</b>	<b>438,744</b>	<b>380,146</b>	<b>16,419</b>	<b>17,506</b>	<b>414,071</b>	<b>187,150</b>	<b>12.4</b>	<b>-5.6</b>
<b>Northern Europe</b>	<b>119,532</b>	<b>112,125</b>	<b>5,012</b>	<b>1,541</b>	<b>118,678</b>	<b>51,579</b>	<b>3.6</b>	<b>-0.7</b>
Denmark	8,110	6,837	215	94	7,146	3,334	0.2	-11.9
Finland	4,303	3,257	141	79	3,477	1,529	0.1	-19.2
Iceland	541	451	19	22	492	226	0.0	-9.1
Ireland	6,019	5,401	291	75	5,767	2,485	0.2	-4.2
Norway	5,982	4,290	143	128	4,561	2,145	0.1	-23.8
Sweden	9,733	7,577	349	263	8,189	3,446	0.2	-15.9
United Kingdom	84,844	84,312	3,854	880	89,046	38,414	2.7	5.0
<b>Western Europe</b>	<b>182,103</b>	<b>154,356</b>	<b>7,734</b>	<b>14,355</b>	<b>176,445</b>	<b>76,629</b>	<b>5.3</b>	<b>-3.1</b>
Austria	6,305	5,481	157	148	5,786	2,624	0.2	-8.2
Belgium	9,148	8,523	424	420	9,367	4,311	0.3	2.4
France	85,906	70,150	4,687	11,838	86,675	37,526	2.6	0.9
Germany	54,613	47,913	1,308	877	50,098	21,407	1.5	-8.3
Luxembourg	395	301	26	21	348	141	0.0	-11.9
Monaco	51	24	8	10	42	10	0.0	-17.6
Netherlands	14,469	13,094	675	393	14,162	6,307	0.4	-2.1
Switzerland	11,216	8,870	449	648	9,967	4,303	0.3	-11.1
<b>Central / Eastern Europe</b>	<b>77,627</b>	<b>62,244</b>	<b>1,809</b>	<b>866</b>	<b>64,919</b>	<b>33,771</b>	<b>1.9</b>	<b>-16.4</b>
Bulgaria	1,885	1,673	52	48	1,773	754	0.1	-5.9
Czech Republic	4,470	3,863	64	58	3,985	1,750	0.1	-10.9
Estonia	2,420	683	36	22	741	326	0.0	-69.4
Hungary	3,351	3,579	69	38	3,686	1,798	0.1	10.0
Kazakhstan	1,186	1,061	182	40	1,283	614	0.0	8.2
Kyrgyzstan	171	149	26	16	191	110	0.0	11.7
Latvia	871	479	35	15	529	273	0.0	-39.3
Lithuania	1,433	1,267	30	16	1,313	703	0.0	-8.4
Poland	11,031	10,237	139	56	10,432	5,176	0.3	-5.4
Romania	2,037	1,810	87	71	1,968	993	0.1	-3.4
Russian Federation	42,245	31,342	730	366	32,438	17,738	1.0	-23.2
Slovakia	2,149	1,675	53	40	1,768	836	0.1	-17.7
Ukraine	4,057	4,197	259	43	4,499	2,566	0.1	10.9
Uzbekistan	321	229	47	37	313	134	0.0	-2.5

## International Tourist Arrivals to Cambodia by Country of Residence in January - June 2019

(by all means of transportation)

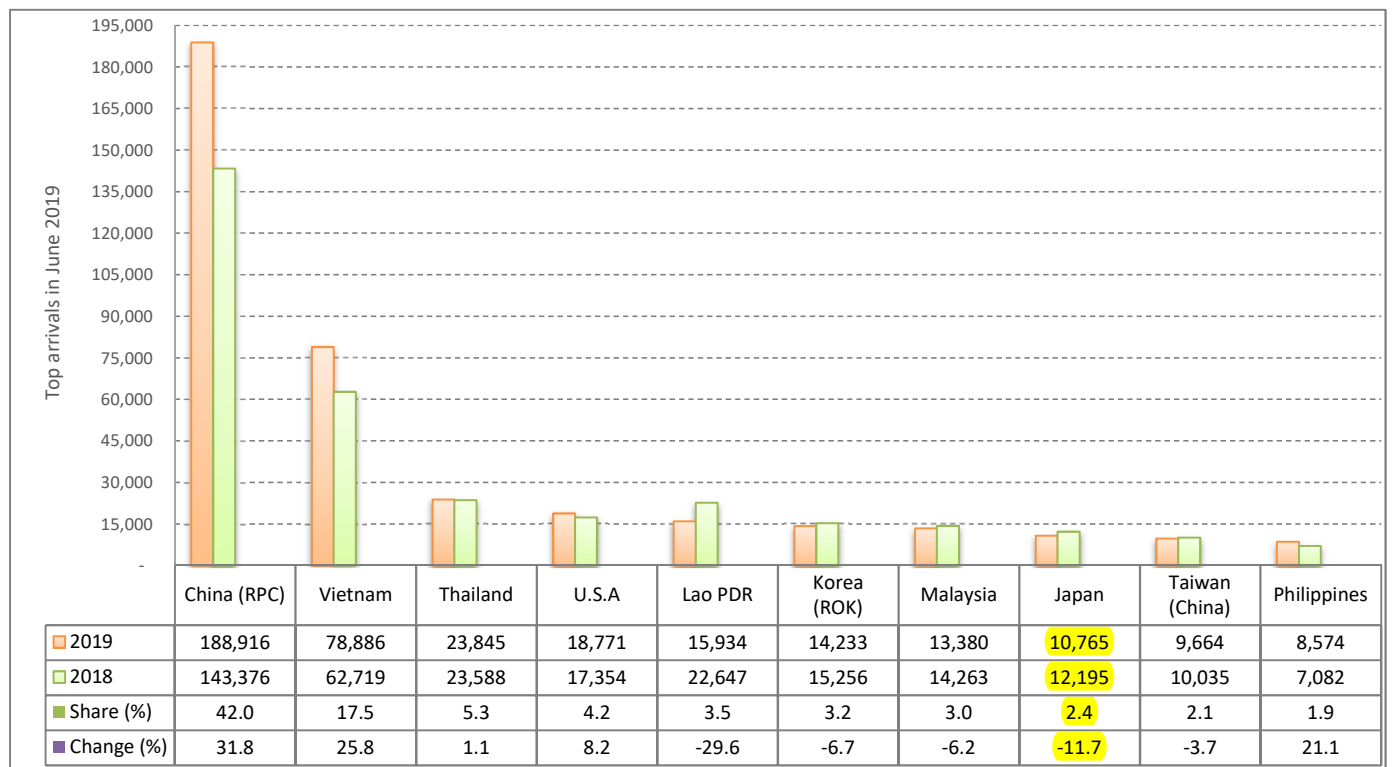
Regions Country of Residence	2018		2019				Share	Change
	Purposes of Visit			Total	Female	2019*	2019*/18	
	Holiday	Business	Others			(%)	(%)	
<b>Grand Total</b>	<b>3,001,660</b>	<b>2,545,483</b>	<b>696,557</b>	<b>96,434</b>	<b>3,338,474</b>	<b>1,364,331</b>	<b>100.0</b>	<b>11.2</b>
<b>Southern Europe</b>	<b>42,303</b>	<b>39,023</b>	<b>1,437</b>	<b>487</b>	<b>40,947</b>	<b>19,277</b>	<b>1.2</b>	<b>-3.2</b>
Croatia	1,225	819	41	27	887	411	0.0	-27.6
Greece	1,121	893	45	35	973	422	0.0	-13.2
Italy	18,201	18,639	696	192	19,527	9,070	0.6	7.3
Malta	207	218	12	12	242	100	0.0	16.9
Portugal	3,437	3,807	109	37	3,953	1,981	0.1	15.0
Serbia	699	676	30	32	738	408	0.0	5.6
Slovenia	905	844	53	26	923	340	0.0	2.0
Spain	16,508	13,127	451	126	13,704	6,545	0.4	-17.0
<b>East Mediterranean Europe</b>	<b>12,633</b>	<b>11,956</b>	<b>308</b>	<b>160</b>	<b>12,424</b>	<b>5,630</b>	<b>0.4</b>	<b>-1.7</b>
Israel	8,025	8,902	122	55	9,079	4,189	0.3	13.1
Turkey	4,608	3,054	186	105	3,345	1,441	0.1	-27.4
Other Europe	4,546	442	119	97	658	264	0.0	-85.5
<b>Americas</b>	<b>201,904</b>	<b>152,353</b>	<b>8,057</b>	<b>30,737</b>	<b>191,147</b>	<b>91,684</b>	<b>5.7</b>	<b>-5.3</b>
<b>North America</b>	<b>172,918</b>	<b>133,518</b>	<b>7,567</b>	<b>30,373</b>	<b>171,458</b>	<b>81,106</b>	<b>5.1</b>	<b>-0.8</b>
Canada	34,943	29,049	1,654	3,918	34,621	15,941	1.0	-0.9
Mexico	4,311	4,488	90	69	4,647	2,369	0.1	7.8
United States of America	133,664	99,981	5,823	26,386	132,190	62,796	4.0	-1.1
<b>Central America</b>	<b>1,266</b>	<b>560</b>	<b>42</b>	<b>35</b>	<b>637</b>	<b>312</b>	<b>0.0</b>	<b>-49.7</b>
Costa Rica	961	421	14	16	451	210	0.0	-53.1
Honduras	105	79	18	9	106	62	0.0	1.0
Jamaica	200	60	10	10	80	40	0.0	-60.0
<b>South America</b>	<b>25,725</b>	<b>18,055</b>	<b>380</b>	<b>278</b>	<b>18,713</b>	<b>10,130</b>	<b>0.6</b>	<b>-27.3</b>
Argentina	8,208	3,839	38	33	3,910	2,049	0.1	-52.4
Brazil	8,083	5,927	113	51	6,091	3,254	0.2	-24.6
Chile	3,789	3,251	89	36	3,376	1,789	0.1	-10.9
Colombia	3,034	1,968	65	63	2,096	1,143	0.1	-30.9
Ecuador	384	292	16	28	336	162	0.0	-12.5
Peru	1,060	802	17	24	843	533	0.0	-20.5
Uruguay	989	1,767	17	22	1,806	1,065	0.1	82.6
Venezuela	178	209	25	21	255	135	0.0	43.3
Other America	1,995	220	68	51	339	136	0.0	-83.0
<b>Africa</b>	<b>7,342</b>	<b>5,523</b>	<b>801</b>	<b>231</b>	<b>6,555</b>	<b>2,930</b>	<b>0.2</b>	<b>-10.7</b>
<b>North Africa</b>	<b>743</b>	<b>1,041</b>	<b>40</b>	<b>38</b>	<b>1,119</b>	<b>516</b>	<b>0.0</b>	<b>50.6</b>
Morocco	466	383	19	10	412	160	0.0	-11.6
Sudan	105	80	8	17	105	31	0.0	0.0
Tunisia	172	578	13	11	602	325	0.0	250.0
<b>Subsaharan Africa</b>	<b>6,248</b>	<b>4,388</b>	<b>731</b>	<b>168</b>	<b>5,287</b>	<b>2,359</b>	<b>0.2</b>	<b>-15.4</b>
Cameroon	129	129	23	20	172	45	0.0	33.3
Congo	195	98	10	9	117	32	0.0	-40.0
Ghana	317	140	21	16	177	26	0.0	-44.2
Kenya	277	172	22	28	222	116	0.0	-19.9
Liberia	1,280	177	10	10	197	38	0.0	-84.6
Nigeria	295	94	192	28	314	46	0.0	6.4
South Africa	3,550	3,207	414	24	3,645	1,849	0.1	2.7
Tanzania	66	114	10	8	132	29	0.0	100.0
Uganda	53	178	15	18	211	109	0.0	298.1
Zimbabwe	86	79	14	7	100	69	0.0	16.3
Other Africa	351	94	30	25	149	55	0.0	-57.5
<b>Middle East</b>	<b>2,626</b>	<b>2,439</b>	<b>246</b>	<b>202</b>	<b>2,887</b>	<b>630</b>	<b>0.1</b>	<b>9.9</b>
Egypt	385	444	49	17	510	123	0.0	32.5
Iraq	420	132	18	56	206	27	0.0	-51.0
Jordan	288	277	41	16	334	65	0.0	16.0
Kuwait	239	194	26	25	245	51	0.0	2.5
Oman	95	136	13	8	157	39	0.0	65.3
Palestine	64	46	9	7	62	6	0.0	-3.1
Qatar	56	35	10	8	53	5	0.0	-5.4
Saudi Arabia	155	165	12	14	191	27	0.0	23.2
Syria	238	262	16	11	289	58	0.0	21.4
United Arab Emirates	113	378	24	10	412	145	0.0	264.6
Yemen	292	303	12	15	330	47	0.0	13.0
Other Middle East	281	67	16	15	98	37	0.0	-65.1

I. INBOUND TOURISM

1. International tourist arrivals in June 2019

	Inbound tourism			Share (%) 2019*	Change (%)	
	2017	2018	2019		18/17	2019*/18
<b>Air</b>	<b>223,109</b>	<b>277,179</b>	<b>335,012</b>	<b>74.4</b>	<b>24.2</b>	<b>20.9</b>
Phnom Penh Int'l Airport (PNH)	107,770	142,276	158,189	35.2	32.0	11.2
Siem Reap Int'l Airport (REP)	111,198	120,773	105,086	23.4	8.6	-13.0
Kong Keng (KOS)	4,141	14,130	71,737	15.9	241.2	407.7
<b>Land and Waterways</b>	<b>154,940</b>	<b>130,634</b>	<b>115,001</b>	<b>25.6</b>	<b>-15.7</b>	<b>-12.0</b>
Land	150,596	124,295	111,841	24.9	-17.5	-10.0
Waterways	4,344	6,339	3,160	0.7	45.9	-50.1
<b>Total</b>	<b>378,049</b>	<b>407,813</b>	<b>450,013</b>	<b>100.0</b>	<b>7.9</b>	<b>10.3</b>

2. Top ten markets arrivals in June 2019



II. OUTBOUND TOURISM

Outbound tourism in June 2019

	Outbound tourism			Change (%)	
	2017	2018	2019	18/17	2019*/18
Cambodian Outbound Tourists	141,981	153,212	162,313	7.9	5.9
International Tourists Departure	405,421	389,469	454,196	-3.9	16.6

III. INTERNAL TOURISM

Foreign visitor arrivals to the regions in June 2019

	Arrivals			Share (%) 2019*	Change (%)	
	2017	2018	2019		18/17	2019*/18
Phnom Penh & Surrounding	237,289	257,040	346,350	60.3	8.3	34.7
Siem Reap Angkor	140,760	150,773	126,602	22.1	7.1	-16.0
Coastal Areas	50,727	57,356	93,552	16.3	13.1	63.1
Eco-tourism Areas	5,631	7,408	7,637	1.3	31.6	3.1
<b>Total</b>	<b>434,407</b>	<b>472,577</b>	<b>574,141</b>	<b>100.0</b>	<b>8.8</b>	<b>21.5</b>

## International Tourist Arrivals to Cambodia by Country of Residence in June 2019

(by all means of transportation)

Regions Country of Residence	2018	2019			Total	Female	Share	Change
		Purposes of Visit					2019*	2019*/18
		Holiday	Business	Others			(%)	(%)
<b>Grand Total</b>	<b>407,813</b>	<b>306,732</b>	<b>129,200</b>	<b>14,081</b>	<b>450,013</b>	<b>189,296</b>	<b>100.0</b>	<b>10.3</b>
<b>Asia and the Pacific</b>	<b>341,142</b>	<b>264,062</b>	<b>125,192</b>	<b>4,735</b>	<b>393,989</b>	<b>164,250</b>	<b>87.6</b>	<b>15.5</b>
<b>ASEAN (Southeast Asia)</b>	<b>141,477</b>	<b>140,473</b>	<b>11,969</b>	<b>1,369</b>	<b>153,811</b>	<b>78,122</b>	<b>34.2</b>	<b>8.7</b>
Brunei Darussalam	62	89	1	2	92	40	0.0	48.4
Indonesia	3,555	2,796	2,229	74	5,099	1,550	1.1	43.4
Lao PDR	22,647	15,759	76	99	15,934	8,072	3.5	-29.6
Malaysia	14,263	11,231	1,972	177	13,380	4,265	3.0	-6.2
Myanmar	1,551	758	619	26	1,403	659	0.3	-9.5
Philippines	7,082	7,234	1,277	63	8,574	5,164	1.9	21.1
Singapore	6,010	6,067	467	64	6,598	2,436	1.5	9.8
Thailand	23,588	20,757	2,422	666	23,845	9,596	5.3	1.1
Vietnam	62,719	75,782	2,906	198	78,886	46,340	17.5	25.8
<b>Northeast Asia</b>	<b>183,536</b>	<b>110,209</b>	<b>111,630</b>	<b>1,832</b>	<b>223,671</b>	<b>80,219</b>	<b>49.7</b>	<b>21.9</b>
China	143,376	83,763	104,440	713	188,916	67,053	42.0	31.8
Hong Kong (China)	2,544	9	15	3	27	5	0.0	-98.9
<b>Japan</b>	<b>12,195</b>	<b>7,887</b>	<b>2,547</b>	<b>331</b>	<b>10,765</b>	<b>3,734</b>	<b>2.4</b>	<b>-11.7</b>
Korea (ROK)	15,256	11,774	2,014	445	14,233	5,552	3.2	-6.7
Macau (China)	87	4	2	1	7	2	0.0	-92.0
Mongolia	43	53	5	1	59	28	0.0	37.2
Taiwan (China)	10,035	6,719	2,607	338	9,664	3,845	2.1	-3.7
<b>Southern Asia</b>	<b>5,534</b>	<b>6,156</b>	<b>983</b>	<b>99</b>	<b>7,238</b>	<b>1,809</b>	<b>1.6</b>	<b>30.8</b>
Afghanistan	46	21	1	2	24	6	0.0	-47.8
Bangladesh	205	498	73	8	579	80	0.1	182.4
Bhutan	47	19	2	6	27	11	0.0	-42.6
India	4,452	4,653	723	35	5,411	1,465	1.2	21.5
Iran	66	67	5	2	74	16	0.0	12.1
Nepal	221	298	45	11	354	103	0.1	60.2
Pakistan	219	366	60	20	446	68	0.1	103.7
Sri Lanka	278	234	74	15	323	60	0.1	16.2
<b>Oceania</b>	<b>10,007</b>	<b>7,123</b>	<b>578</b>	<b>1,366</b>	<b>9,067</b>	<b>4,028</b>	<b>2.0</b>	<b>-9.4</b>
Australia	8,269	5,848	499	1,113	7,460	3,314	1.7	-9.8
Fiji	22	7	6	1	14	6	0.0	-36.4
New Zealand	1,716	1,268	73	252	1,593	708	0.4	-7.2
Other Asia & the Pacific	588	101	32	69	202	72	0.0	-65.6
<b>Europe</b>	<b>38,981</b>	<b>25,804</b>	<b>2,515</b>	<b>3,014</b>	<b>31,333</b>	<b>13,615</b>	<b>7.0</b>	<b>-19.6</b>
<b>Northern Europe</b>	<b>13,480</b>	<b>9,546</b>	<b>759</b>	<b>281</b>	<b>10,586</b>	<b>4,496</b>	<b>2.4</b>	<b>-21.5</b>
Denmark	1,180	306	32	16	354	120	0.1	-70.0
Finland	432	230	13	19	262	110	0.1	-39.4
Iceland	37	36	5	1	42	17	0.0	13.5
Ireland	735	906	33	16	955	462	0.2	29.9
Norway	400	338	17	37	392	162	0.1	-2.0
Sweden	578	380	51	53	484	178	0.1	-16.3
United Kingdom	10,118	7,350	608	139	8,097	3,447	1.8	-20.0
<b>Western Europe</b>	<b>14,042</b>	<b>9,144</b>	<b>1,203</b>	<b>2,579</b>	<b>12,926</b>	<b>5,358</b>	<b>2.9</b>	<b>-7.9</b>
Austria	740	239	31	31	301	114	0.1	-59.3
Belgium	742	677	81	111	869	370	0.2	17.1
France	6,955	4,147	727	2,193	7,067	2,986	1.6	1.6
Germany	3,198	2,417	190	122	2,729	1,049	0.6	-14.7
Luxembourg	12	20	3	1	24	8	0.0	100.0
Monaco	4	2	1	1	4	1	0.0	0.0
Netherlands	1,478	1,112	107	45	1,264	559	0.3	-14.5
Switzerland	913	530	63	75	668	271	0.1	-26.8
<b>Central / Eastern Europe</b>	<b>5,951</b>	<b>2,958</b>	<b>265</b>	<b>68</b>	<b>3,291</b>	<b>1,767</b>	<b>0.7</b>	<b>-44.7</b>
Bulgaria	516	63	6	3	72	35	0.0	-86.0
Czech Republic	198	192	9	7	208	89	0.0	5.1
Estonia	843	34	4	2	40	16	0.0	-95.3
Hungary	236	125	7	9	141	56	0.0	-40.3
Kazakhstan	95	75	33	1	109	63	0.0	14.7
Kyrgyzstan	12	23	7	1	31	14	0.0	158.3
Latvia	99	38	2	1	41	21	0.0	-58.6
Lithuania	82	61	6	2	69	27	0.0	-15.9
Poland	687	439	18	3	460	238	0.1	-33.0
Romania	144	54	7	3	64	38	0.0	-55.6
Russian Federation	2,529	1,562	116	27	1,705	973	0.4	-32.6
Slovakia	123	69	7	2	78	40	0.0	-36.6
Ukraine	348	208	38	5	251	148	0.1	-27.9
Uzbekistan	39	15	5	2	22	9	0.0	-43.6

## International Tourist Arrivals to Cambodia by Country of Residence in June 2019

(by all means of transportation)

Regions Country of Residence	2018	2019			Total	Female	Share	Change
		Purposes of Visit					2019*	2019*/18
		Holiday	Business	Others			(%)	(%)
<b>Grand Total</b>	<b>407,813</b>	<b>306,732</b>	<b>129,200</b>	<b>14,081</b>	<b>450,013</b>	<b>189,296</b>	<b>100.0</b>	<b>10.3</b>
<b>Southern Europe</b>	<b>4,314</b>	<b>3,308</b>	<b>224</b>	<b>58</b>	<b>3,590</b>	<b>1,613</b>	<b>0.8</b>	<b>-16.8</b>
Croatia	109	25	2	3	30	15	0.0	-72.5
Greece	191	51	2	2	55	23	0.0	-71.2
Italy	1,227	956	119	27	1,102	407	0.2	-10.2
Malta	19	13	1	1	15	5	0.0	-21.1
Portugal	361	354	23	3	380	178	0.1	5.3
Serbia	26	30	4	1	35	12	0.0	34.6
Slovenia	65	38	8	2	48	21	0.0	-26.2
Spain	2,316	1,841	65	19	1,925	952	0.4	-16.9
<b>East Mediterranean Europe</b>	<b>813</b>	<b>829</b>	<b>53</b>	<b>16</b>	<b>898</b>	<b>365</b>	<b>0.2</b>	<b>10.5</b>
Israel	418	440	20	3	463	168	0.1	10.8
Turkey	395	389	33	13	435	197	0.1	10.1
Other Europe	381	19	11	12	42	16	0.0	-89.0
<b>Americas</b>	<b>24,672</b>	<b>15,768</b>	<b>1,337</b>	<b>6,275</b>	<b>23,380</b>	<b>10,990</b>	<b>5.2</b>	<b>-5.2</b>
<b>North America</b>	<b>20,768</b>	<b>14,438</b>	<b>1,263</b>	<b>6,220</b>	<b>21,921</b>	<b>10,265</b>	<b>4.9</b>	<b>5.6</b>
Canada	2,839	1,822	216	473	2,511	1,107	0.6	-11.6
Mexico	575	617	19	3	639	306	0.1	11.1
United States of America	17,354	11,999	1,028	5,744	18,771	8,852	4.2	8.2
<b>Central America</b>	<b>473</b>	<b>42</b>	<b>5</b>	<b>3</b>	<b>50</b>	<b>22</b>	<b>0.0</b>	<b>-89.4</b>
Costa Rica	370	31	1	1	33	15	0.0	-91.1
Honduras	20	2	3	1	6	2	0.0	-70.0
Jamaica	83	9	1	1	11	5	0.0	-86.7
<b>South America</b>	<b>3,308</b>	<b>1,278</b>	<b>62</b>	<b>44</b>	<b>1,384</b>	<b>696</b>	<b>0.3</b>	<b>-58.2</b>
Argentina	371	172	6	2	180	85	0.0	-51.5
Brazil	1,164	381	22	6	409	205	0.1	-64.9
Chile	637	209	11	6	226	116	0.1	-64.5
Colombia	882	290	10	24	324	176	0.1	-63.3
Ecuador	59	32	2	2	36	10	0.0	-39.0
Peru	147	133	3	2	138	75	0.0	-6.1
Uruguay	35	32	5	1	38	17	0.0	8.6
Venezuela	13	29	3	1	33	12	0.0	153.8
Other America	123	10	7	8	25	7	0.0	-79.7
<b>Africa</b>	<b>2,364</b>	<b>721</b>	<b>101</b>	<b>35</b>	<b>857</b>	<b>354</b>	<b>0.2</b>	<b>-63.7</b>
<b>North Africa</b>	<b>59</b>	<b>84</b>	<b>4</b>	<b>10</b>	<b>98</b>	<b>38</b>	<b>0.0</b>	<b>66.1</b>
Morocco	33	59	2	1	62	26	0.0	87.9
Sudan	13	15	1	8	24	7	0.0	84.6
Tunisia	13	10	1	1	12	5	0.0	-7.7
<b>Subsaharan Africa</b>	<b>2,280</b>	<b>631</b>	<b>93</b>	<b>22</b>	<b>746</b>	<b>312</b>	<b>0.2</b>	<b>-67.3</b>
Cameroon	29	23	5	1	29	7	0.0	0.0
Congo	153	12	1	1	14	5	0.0	-90.8
Ghana	234	13	2	1	16	5	0.0	-93.2
Kenya	90	29	3	2	34	22	0.0	-62.2
Liberia	1,236	36	1	1	38	7	0.0	-96.9
Nigeria	38	15	25	2	42	8	0.0	10.5
South Africa	455	464	52	5	521	233	0.1	14.5
Tanzania	22	6	1	1	8	4	0.0	-63.6
Uganda	7	23	1	7	31	16	0.0	342.9
Zimbabwe	16	10	2	1	13	5	0.0	-18.8
Other Africa	25	6	4	3	13	4	0.0	-48.0
<b>Middle East</b>	<b>654</b>	<b>377</b>	<b>55</b>	<b>22</b>	<b>454</b>	<b>87</b>	<b>0.1</b>	<b>-30.6</b>
Egypt	42	67	15	3	85	21	0.0	102.4
Iraq	291	27	2	2	31	7	0.0	-89.3
Jordan	71	65	8	3	76	18	0.0	7.0
Kuwait	33	41	7	2	50	5	0.0	51.5
Oman	15	16	6	1	23	9	0.0	53.3
Palestine	7	15	2	1	18	2	0.0	157.1
Qatar	4	5	1	2	8	1	0.0	100.0
Saudi Arabia	40	33	2	2	37	4	0.0	-7.5
Syria	37	33	3	2	38	7	0.0	2.7
United Arab Emirates	16	30	4	1	35	3	0.0	118.8
Yemen	84	40	2	1	43	7	0.0	-48.8
Other Middle East	14	5	3	2	10	3	0.0	-28.6