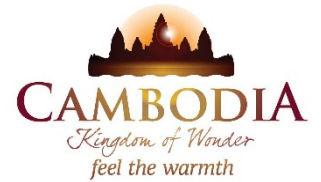




KINGDOM OF CAMBODIA
NATION RELIGION KING



TOURISM STATISTICS REPORT

September 2019

MINISTRY OF TOURISM
NATIONAL INSTITUTE OF TOURISM
TOURISM STATISTICS DEPARTMENT
No. A3, Street 169, Sangkat Veal Vong, Khan 7 Makara, Phnom Penh, Cambodia.
Fax: +855 23 885003
E-mail: kong@tourism.gov.kh
Website: www.tourism.gov.kh

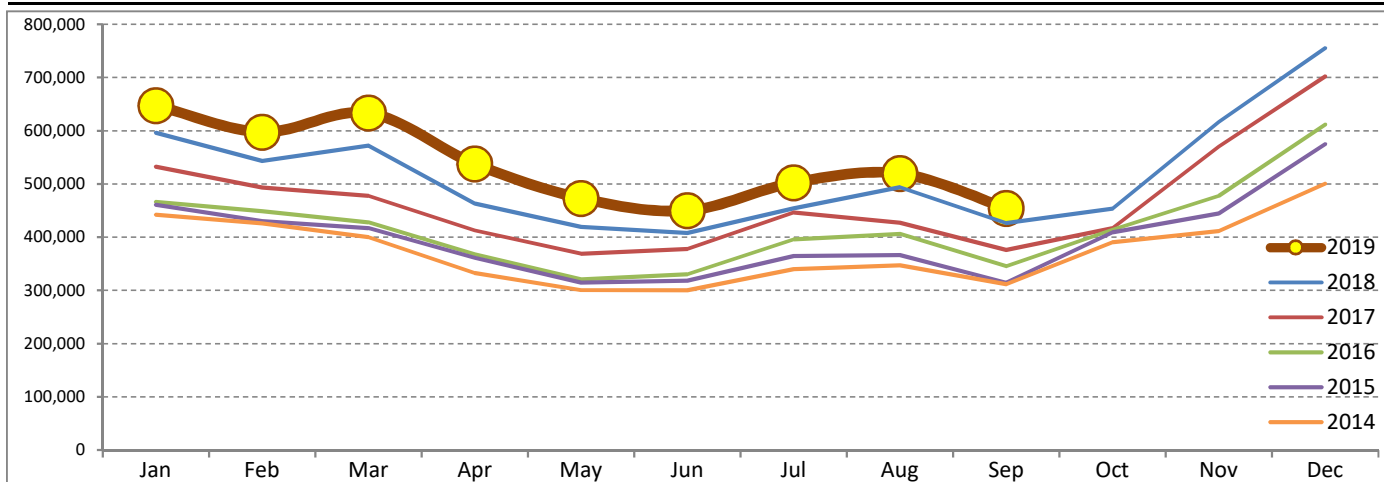
Tourism Highlights

Int'l Tourist Arrivals, Average Length of Stays, Hotel Occupancy & Int'l Tourism Receipts 1993 - 2018

Years	Int'l Tourist Arrivals		Average Length	Hotel Occupancy	Int'l Tourism Receipts
	Number	Change (%)	of Stays (Days)	(%)	(Million US\$)
1993	118,183	-	N/A	N/A	N/A
1994	176,617	49.4	N/A	N/A	N/A
1995	219,680	24.4	8.00	37.0	100
1996	260,489	18.6	7.50	40.0	118
1997	218,843	-16.0	6.40	30.0	103
1998	286,524	30.9	5.20	40.0	166
1999	367,743	28.3	5.50	44.0	190
2000	466,365	26.8	5.50	45.0	228
2001	604,919	29.7	5.50	48.0	304
2002	786,524	30.0	5.80	50.0	379
2003	701,014	-10.9	5.50	50.0	347
2004	1,055,202	50.5	6.30	52.0	578
2005	1,421,615	34.7	6.30	52.0	832
2006	1,700,041	19.6	6.50	54.8	1,049
2007	2,015,128	18.5	6.50	54.8	1,400
2008	2,125,465	5.5	6.65	62.7	1,595
2009	2,161,577	1.7	6.45	63.6	1,561
2010	2,508,289	16.0	6.45	65.7	1,786
2011	2,881,862	14.9	6.50	66.2	1,912
2012	3,584,307	24.4	6.30	68.5	2,210
2013	4,210,165	17.5	6.75	69.5	2,547
2014	4,502,775	7.0	6.50	67.6	2,736
2015	4,775,231	6.1	6.80	70.2	3,012
2016	5,011,712	5.0	6.30	68.9	3,212
2017	5,602,157	11.8	6.60	71.3	3,638
2018	6,201,077	10.7	7.00	72.2	4,375

International Tourist Arrivals to Cambodia

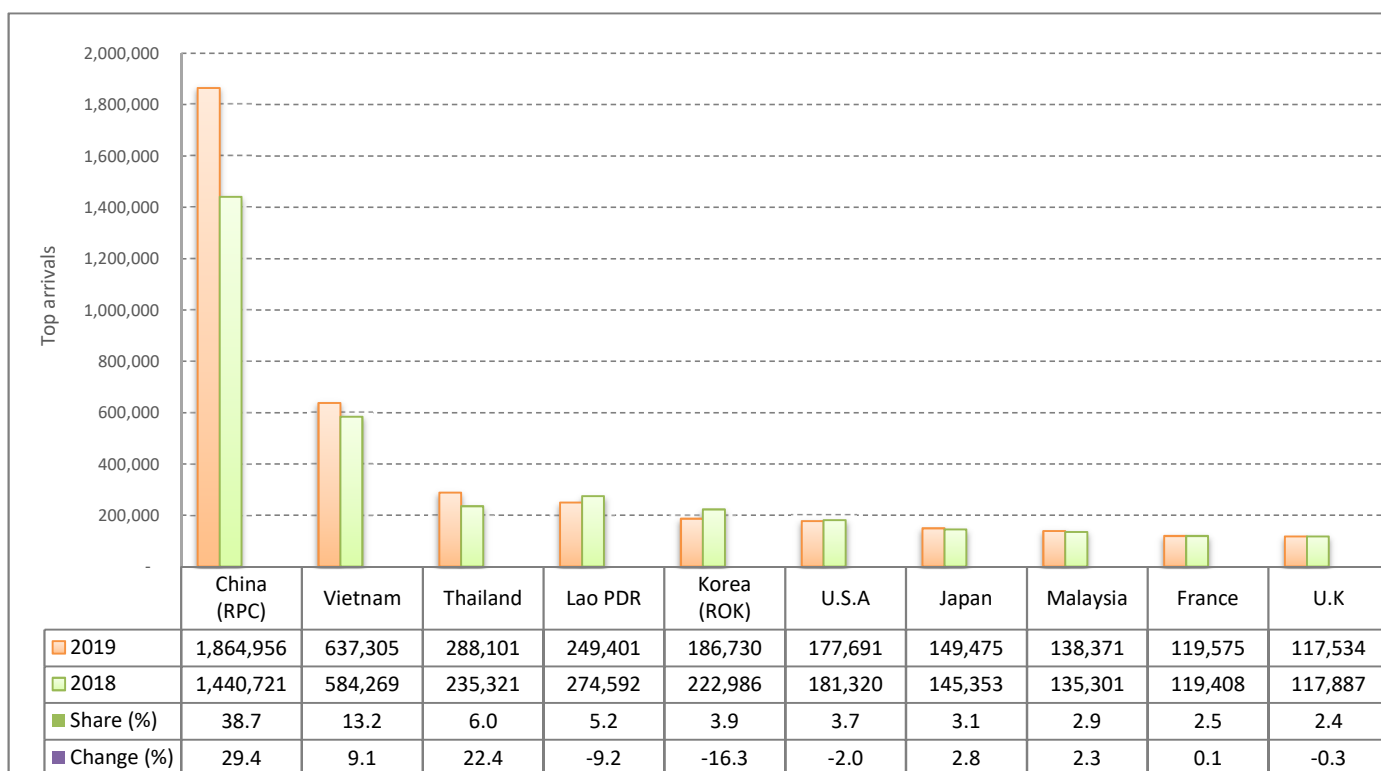
Months	2014	2015	2016	2017	2018	2019	Change (%)				
							15/14	16/15	17/16	18/17	2019*/18
Q1	1,267,922	1,307,836	1,342,477	1,502,896	1,711,253	1,877,853	3.1	2.6	11.9	13.9	9.7
Jan	442,045	460,577	466,086	532,206	596,241	647,206	4.2	1.2	14.2	12.0	8.5
Feb	425,801	430,207	448,468	493,316	542,937	597,483	1.0	4.2	10.0	10.1	10.0
Mar	400,076	417,052	427,923	477,374	572,075	633,164	4.2	2.6	11.6	19.8	10.7
Q2	933,446	994,154	1,018,455	1,159,783	1,290,407	1,460,621	6.5	2.4	13.9	11.3	13.2
Apr	332,690	361,139	367,684	412,925	463,423	537,656	8.6	1.8	12.3	12.2	16.0
May	300,302	314,748	320,601	368,809	419,171	472,952	4.8	1.9	15.0	13.7	12.8
Jun	300,454	318,267	330,170	378,049	407,813	450,013	5.9	3.7	14.5	7.9	10.3
Q3	998,690	1,044,880	1,147,483	1,250,082	1,374,373	1,475,832	4.6	9.8	8.9	9.9	7.4
Jul	340,091	364,325	395,761	446,627	454,056	502,421	7.1	8.6	12.9	1.7	10.7
Aug	347,211	366,096	406,214	427,224	494,043	519,502	5.4	11.0	5.2	15.6	5.2
Sep	311,388	314,459	345,508	376,231	426,274	453,909	1.0	9.9	8.9	13.3	6.5
Q4	1,302,717	1,428,361	1,503,297	1,689,396	1,825,044	0	9.6	5.2	12.4	8.0	
Oct	390,637	408,922	414,077	417,039	453,370		4.7	1.3	0.7	8.7	
Nov	411,501	444,640	477,686	570,471	616,549		8.1	7.4	19.4	8.1	
Dec	500,579	574,799	611,534	701,886	755,125		14.8	6.4	14.8	7.6	
Total	4,502,775	4,775,231	5,011,712	5,602,157	6,201,077	4,814,306	6.1	5.0	11.8	10.7	10.0



Source: Tourism Statistics Department, MOT

I. INBOUND TOURISM
1. International tourist arrivals in January - September 2019

	Inbound tourism			Share (%) 2019*	Change (%)	
	2017	2018	2019		18/17	2019*/18
Air	2,383,409	2,958,921	3,393,809	70.5	24.1	14.7
Phnom Penh Int'l Airport (PNH)	1,026,720	1,391,759	1,567,927	32.6	35.6	12.7
Siem Reap Int'l Airport (REP)	1,298,351	1,432,499	1,276,401	26.5	10.3	-10.9
Kong Keng (KOS)	58,338	134,663	549,481	11.4	130.8	308.0
Land and Waterways	1,529,352	1,417,112	1,420,497	29.5	-7.3	0.2
Land	1,421,083	1,315,090	1,317,846	27.4	-7.5	0.2
Waterways	108,269	102,022	102,651	2.1	-5.8	0.6
Total	3,912,761	4,376,033	4,814,306	100.0	11.8	10.0

2. Top ten markets arrivals in January - September 2019

II. OUTBOUND TOURISM
Outbound tourism in January - September 2019

	Outbound tourism			Change (%)	
	2017	2018	2019	18/17	2019*/18
Cambodian Outbound Tourists	1,319,472	1,459,507	1,531,216	10.6	4.9
International Tourists Departure	3,751,590	4,227,150	4,638,346	12.7	9.7

III. INTERNAL TOURISM
Foreign visitor arrivals to the regions in January - September 2019

	Arrivals			Share (%) 2019*	Change (%)	
	2017	2018	2019		18/17	2019*/18
Phnom Penh & Surrounding	2,159,489	2,474,454	3,151,793	54.5	14.6	27.4
Siem Reap Angkor	1,753,272	1,901,569	1,662,513	28.7	8.5	-12.6
Coastal Areas	554,965	650,202	910,175	15.7	17.2	40.0
Eco-tourism Areas	55,082	57,115	62,195	1.1	3.7	8.9
Total	4,522,808	5,083,340	5,786,676	100.0	12.4	13.8

International Tourist Arrivals to Cambodia by Country of Residence in January - September 2019

(by all means of transportation)

Regions Country of Residence	2018		2019				Share	Change	
			Purposes of Visit			Total	Female	2019*	2019*/18
			Holiday	Business	Others			(%)	(%)
Grand Total	4,376,033	3,573,492	1,100,921	139,893	4,814,306	1,989,307	100.0	10.0	
Asia and the Pacific	3,494,140	2,858,536	1,061,732	64,026	3,984,294	1,606,948	82.8	14.0	
ASEAN (Southeast Asia)	1,400,235	1,352,537	127,373	26,563	1,506,473	673,665	31.3	7.6	
Brunei Darussalam	581	786	18	31	835	392	0.0	43.7	
Indonesia	38,336	25,259	19,976	1,242	46,477	13,539	1.0	21.2	
Lao PDR	274,592	241,995	868	6,538	249,401	103,838	5.2	-9.2	
Malaysia	135,301	119,028	17,314	2,029	138,371	42,614	2.9	2.3	
Myanmar	14,555	11,148	4,907	576	16,631	7,064	0.3	14.3	
Philippines	61,340	59,651	11,185	1,052	71,888	43,632	1.5	17.2	
Singapore	55,940	52,195	4,303	966	57,464	18,134	1.2	2.7	
Thailand	235,321	247,317	33,069	7,715	288,101	111,825	6.0	22.4	
Vietnam	584,269	595,158	35,733	6,414	637,305	332,627	13.2	9.1	
Northeast Asia	1,917,789	1,365,716	919,965	20,715	2,306,396	870,169	47.9	20.3	
China	1,440,721	1,001,386	855,791	7,779	1,864,956	691,138	38.7	29.4	
Hong Kong (China)	8,094	1,359	122	81	1,562	341	0.0	-80.7	
Japan	145,353	123,474	22,561	3,440	149,475	59,355	3.1	2.8	
Korea (ROK)	222,986	163,337	17,583	5,810	186,730	78,317	3.9	-16.3	
Macau (China)	452	107	35	25	167	32	0.0	-63.1	
Mongolia	584	798	52	47	897	424	0.0	53.6	
Taiwan (China)	99,599	75,255	23,821	3,533	102,609	40,562	2.1	3.0	
Southern Asia	54,804	57,075	8,082	1,001	66,158	16,762	1.4	20.7	
Afghanistan	197	233	29	24	286	91	0.0	45.2	
Bangladesh	2,157	3,817	867	164	4,848	618	0.1	124.8	
Bhutan	138	137	14	34	185	64	0.0	34.1	
India	44,220	44,468	5,355	364	50,187	13,758	1.0	13.5	
Iran	873	809	52	34	895	295	0.0	2.5	
Nepal	2,135	2,322	418	150	2,890	792	0.1	35.4	
Pakistan	2,460	2,841	497	90	3,428	447	0.1	39.3	
Sri Lanka	2,624	2,448	850	141	3,439	697	0.1	31.1	
Oceania	112,630	82,062	5,933	15,301	103,296	45,610	2.1	-8.3	
Australia	94,265	69,158	5,029	12,076	86,263	38,202	1.8	-8.5	
Fiji	178	328	52	44	424	156	0.0	138.2	
New Zealand	18,187	12,576	852	3,181	16,609	7,252	0.3	-8.7	
Other Asia & the Pacific	8,682	1,146	379	446	1,971	742	0.0	-77.3	
Europe	598,132	508,155	24,780	29,693	562,628	256,860	11.7	-5.9	
Northern Europe	162,471	145,785	7,761	2,386	155,932	67,856	3.2	-4.0	
Denmark	10,079	8,467	353	167	8,987	4,155	0.2	-10.8	
Finland	5,563	3,790	224	111	4,125	1,774	0.1	-25.8	
Iceland	605	552	37	31	620	271	0.0	2.5	
Ireland	9,444	8,523	445	114	9,082	4,099	0.2	-3.8	
Norway	7,410	5,550	207	193	5,950	2,699	0.1	-19.7	
Sweden	11,483	8,702	545	387	9,634	3,921	0.2	-16.1	
United Kingdom	117,887	110,201	5,950	1,383	117,534	50,937	2.4	-0.3	
Western Europe	248,052	202,528	11,165	25,019	238,712	105,311	5.0	-3.8	
Austria	8,254	7,053	270	367	7,690	3,480	0.2	-6.8	
Belgium	13,511	12,799	638	725	14,162	6,568	0.3	4.8	
France	119,408	92,518	6,448	20,609	119,575	53,229	2.5	0.1	
Germany	70,321	58,866	1,990	1,610	62,466	26,698	1.3	-11.2	
Luxembourg	542	632	45	32	709	308	0.0	30.8	
Monaco	64	35	11	14	60	17	0.0	-6.3	
Netherlands	21,360	19,395	1,061	596	21,052	9,424	0.4	-1.4	
Switzerland	14,592	11,230	702	1,066	12,998	5,587	0.3	-10.9	
Central / Eastern Europe	94,258	73,953	2,916	1,166	78,035	40,991	1.6	-17.2	
Bulgaria	2,216	1,877	75	56	2,008	859	0.0	-9.4	
Czech Republic	5,387	4,671	116	75	4,862	2,175	0.1	-9.7	
Estonia	2,703	756	44	28	828	359	0.0	-69.4	
Hungary	3,816	3,977	103	66	4,146	2,014	0.1	8.6	
Kazakhstan	1,531	1,252	304	46	1,602	807	0.0	4.6	
Kyrgyzstan	238	186	56	22	264	139	0.0	10.9	
Latvia	1,114	761	53	22	836	428	0.0	-25.0	
Lithuania	1,646	1,464	53	22	1,539	827	0.0	-6.5	
Poland	14,295	12,166	214	90	12,470	6,259	0.3	-12.8	
Romania	2,693	2,074	116	101	2,291	1,173	0.0	-14.9	
Russian Federation	50,258	37,436	1,208	472	39,116	21,601	0.8	-22.2	
Slovakia	2,690	1,993	83	55	2,131	1,005	0.0	-20.8	
Ukraine	5,218	5,023	396	62	5,481	3,130	0.1	5.0	
Uzbekistan	453	317	95	49	461	215	0.0	1.8	

International Tourist Arrivals to Cambodia by Country of Residence in January - September 2019

(by all means of transportation)

Regions Country of Residence	2018	2019			Total	Female	Share	Change
		Purposes of Visit					2019*	2019*/18
		Holiday	Business	Others			(%)	(%)
Grand Total	4,376,033	3,573,492	1,100,921	139,893	4,814,306	1,989,307	100.0	10.0
Southern Europe	71,280	70,414	2,190	742	73,346	35,400	1.5	2.9
Croatia	1,714	944	54	43	1,041	478	0.0	-39.3
Greece	1,518	1,304	61	52	1,417	619	0.0	-6.7
Italy	27,224	27,769	1,070	299	29,138	13,435	0.6	7.0
Malta	354	350	15	17	382	161	0.0	7.9
Portugal	4,943	5,529	166	52	5,747	2,899	0.1	16.3
Serbia	953	799	39	41	879	445	0.0	-7.8
Slovenia	1,131	1,030	90	41	1,161	440	0.0	2.7
Spain	33,443	32,689	695	197	33,581	16,923	0.7	0.4
East Mediterranean Europe	16,915	14,975	587	242	15,804	6,988	0.3	-6.6
Israel	10,778	10,718	281	77	11,076	5,051	0.2	2.8
Turkey	6,137	4,257	306	165	4,728	1,937	0.1	-23.0
Other Europe	5,156	500	161	138	799	314	0.0	-84.5
Americas	270,139	195,462	12,754	45,519	253,735	120,508	5.3	-6.1
North America	232,468	170,681	11,804	45,032	227,517	106,579	4.7	-2.1
Canada	44,868	34,848	2,560	5,478	42,886	19,646	0.9	-4.4
Mexico	6,280	6,687	142	111	6,940	3,554	0.1	10.5
United States of America	181,320	129,146	9,102	39,443	177,691	83,379	3.7	-2.0
Central America	1,565	824	69	52	945	458	0.0	-39.6
Costa Rica	1,194	572	21	21	614	291	0.0	-48.6
Honduras	145	100	32	13	145	78	0.0	0.0
Jamaica	226	152	16	18	186	89	0.0	-17.7
South America	33,943	23,704	788	364	24,856	13,310	0.5	-26.8
Argentina	9,345	4,444	72	43	4,559	2,341	0.1	-51.2
Brazil	10,012	6,895	173	68	7,136	3,767	0.1	-28.7
Chile	4,896	5,479	312	48	5,839	3,139	0.1	19.3
Colombia	6,307	2,859	102	74	3,035	1,653	0.1	-51.9
Ecuador	565	434	29	35	498	237	0.0	-11.9
Peru	1,460	1,316	33	41	1,390	816	0.0	-4.8
Uruguay	1,115	1,920	30	29	1,979	1,141	0.0	77.5
Venezuela	243	357	37	26	420	216	0.0	72.8
Other America	2,163	253	93	71	417	161	0.0	-80.7
Africa	9,827	7,876	1,270	352	9,498	4,147	0.2	-3.3
North Africa	1,110	1,488	69	68	1,625	744	0.0	46.4
Morocco	702	692	36	19	747	320	0.0	6.4
Sudan	161	133	13	30	176	55	0.0	9.3
Tunisia	247	663	20	19	702	369	0.0	184.2
Subsaharan Africa	8,314	6,278	1,160	249	7,687	3,337	0.2	-7.5
Cameroon	203	218	38	28	284	85	0.0	39.9
Congo	245	147	15	13	175	49	0.0	-28.6
Ghana	369	193	41	22	256	39	0.0	-30.6
Kenya	374	313	44	41	398	209	0.0	6.4
Liberia	1,333	282	17	13	312	55	0.0	-76.6
Nigeria	401	156	258	44	458	67	0.0	14.2
South Africa	5,070	4,455	685	40	5,180	2,548	0.1	2.2
Tanzania	84	136	15	12	163	43	0.0	94.0
Uganda	109	270	24	26	320	158	0.0	193.6
Zimbabwe	126	108	23	10	141	84	0.0	11.9
Other Africa	403	110	41	35	186	66	0.0	-53.8
Middle East	3,795	3,463	385	303	4,151	844	0.1	9.4
Egypt	614	698	80	31	809	186	0.0	31.8
Iraq	510	213	34	89	336	52	0.0	-34.1
Jordan	368	391	61	20	472	82	0.0	28.3
Kuwait	364	271	43	37	351	64	0.0	-3.6
Oman	200	174	16	11	201	44	0.0	0.5
Palestine	110	63	13	11	87	9	0.0	-20.9
Qatar	76	56	14	11	81	10	0.0	6.6
Saudi Arabia	235	273	19	22	314	48	0.0	33.6
Syria	349	356	25	16	397	72	0.0	13.8
United Arab Emirates	174	469	34	16	519	161	0.0	198.3
Yemen	482	421	22	18	461	72	0.0	-4.4
Other Middle East	313	78	24	21	123	44	0.0	-60.7

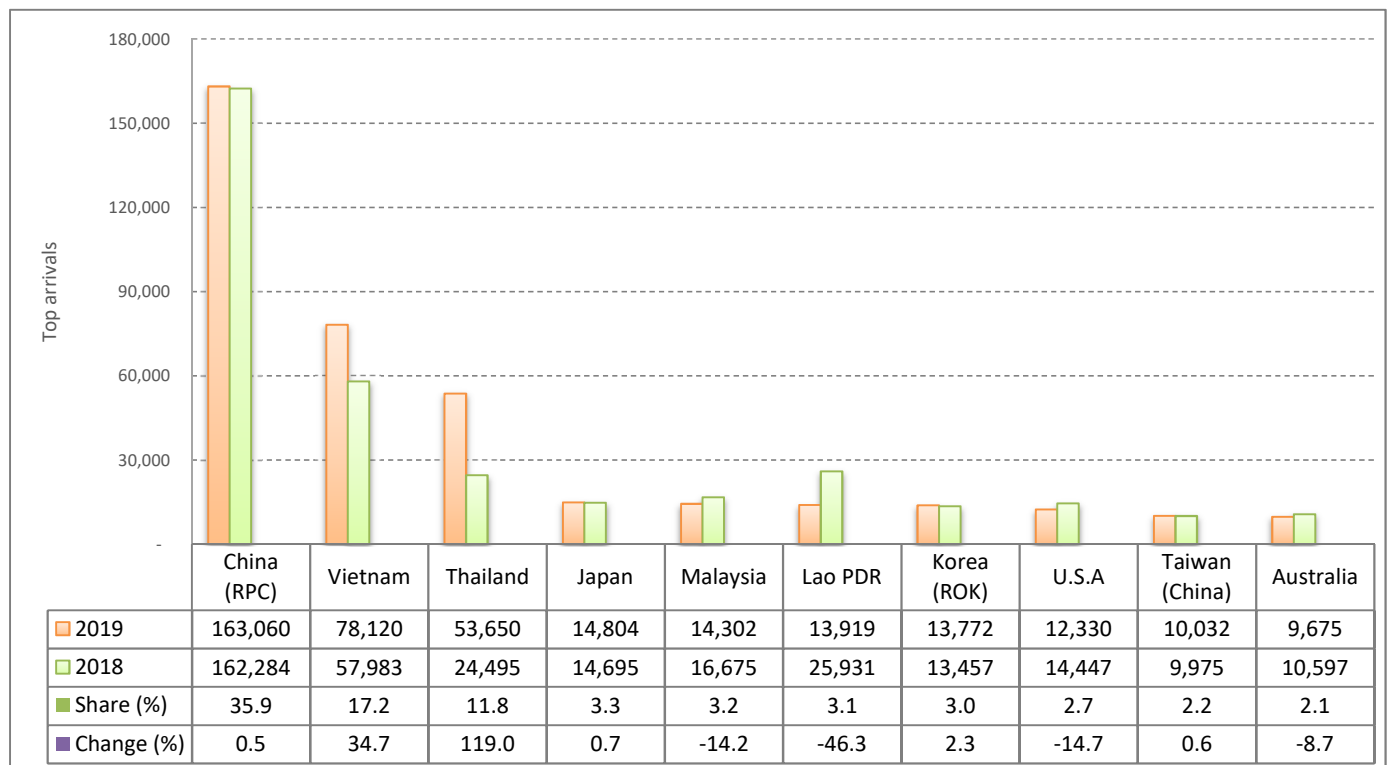
CAMBODIA: TOURISM STATISTICS REPORT IN SEPTEMBER 2019

I. INBOUND TOURISM

1. International tourist arrivals in September 2019

	Inbound tourism			Share (%) 2019*	Change (%)	
	2017	2018	2019		18/17	2019*/18
Air	232,453	297,105	289,320	63.7	27.8	-2.6
Phnom Penh Int'l Airport (PNH)	110,827	147,515	140,440	30.9	33.1	-4.8
Siem Reap Int'l Airport (REP)	115,281	125,141	88,147	19.4	8.6	-29.6
Kong Keng (KOS)	6,345	24,449	60,733	13.4	285.3	148.4
Land and Waterways	143,778	129,169	164,589	36.3	-10.2	27.4
Land	138,323	119,637	157,100	34.6	-13.5	31.3
Waterways	5,455	9,532	7,489	1.6	74.7	-21.4
Total	376,231	426,274	453,909	100.0	13.3	6.5

2. Top ten markets arrivals in September 2019



II. OUTBOUND TOURISM

Outbound tourism in September 2019

	Outbound tourism			Change (%)	
	2017	2018	2019	18/17	2019*/18
Cambodian Outbound Tourists	166,372	173,111	184,156	4.1	6.4
International Tourists Departure	357,870	413,947	498,487	15.7	20.4

III. INTERNAL TOURISM

Foreign visitor arrivals to the regions in September 2019

	Arrivals			Share (%) 2019*	Change (%)	
	2017	2018	2019		18/17	2019*/18
Phnom Penh & Surrounding	231,390	269,409	343,232	60.7	16.4	27.4
Siem Reap Angkor	144,841	156,865	110,677	19.6	8.3	-29.4
Coastal Areas	62,780	60,936	105,638	18.7	-2.9	73.4
Eco-tourism Areas	6,539	5,137	5,472	1.0	-21.4	6.5
Total	445,550	492,347	565,019	100.0	10.5	14.8

International Tourist Arrivals to Cambodia by Country of Residence in September 2019

(by all means of transportation)

Regions Country of Residence	2018	2019			Total	Female	Share	Change
		Purposes of Visit					2019*	2019*/18
		Holiday	Business	Others			(%)	(%)
Grand Total	426,274	324,218	118,652	11,039	453,909	185,500	100.0	6.5
Asia and the Pacific	363,812	282,867	113,698	5,025	401,590	162,831	88.5	10.4
ASEAN (Southeast Asia)	143,970	164,364	14,986	1,185	180,535	85,321	39.8	25.4
Brunei Darussalam	59	53	3	4	60	24	0.0	1.7
Indonesia	4,416	2,470	2,183	45	4,698	1,408	1.0	6.4
Lao PDR	25,931	13,616	154	149	13,919	6,780	3.1	-46.3
Malaysia	16,675	11,952	2,221	129	14,302	4,750	3.2	-14.2
Myanmar	1,251	913	526	34	1,473	731	0.3	17.7
Philippines	5,609	6,025	1,205	58	7,288	4,661	1.6	29.9
Singapore	7,551	6,436	519	70	7,025	2,494	1.5	-7.0
Thailand	24,495	47,909	5,297	444	53,650	23,059	11.8	119.0
Vietnam	57,983	74,990	2,878	252	78,120	41,414	17.2	34.7
Northeast Asia	200,919	102,330	97,088	2,389	201,807	70,046	44.5	0.4
China	162,284	73,191	88,813	1,056	163,060	54,700	35.9	0.5
Hong Kong (China)	413	47	13	5	65	23	0.0	-84.3
Japan	14,695	11,577	2,900	327	14,804	5,992	3.3	0.7
Korea (ROK)	13,457	10,792	2,313	667	13,772	5,402	3.0	2.3
Macau (China)	49	3	2	1	6	2	0.0	-87.8
Mongolia	46	56	4	8	68	32	0.0	47.8
Taiwan (China)	9,975	6,664	3,043	325	10,032	3,895	2.2	0.6
Southern Asia	6,315	6,857	939	96	7,892	1,909	1.7	25.0
Afghanistan	7	12	4	2	18	2	0.0	157.1
Bangladesh	261	424	131	16	571	56	0.1	118.8
Bhutan	7	2	1	6	9	1	0.0	28.6
India	4,989	5,477	567	34	6,078	1,652	1.3	21.8
Iran	72	73	9	2	84	19	0.0	16.7
Nepal	305	174	61	9	244	62	0.1	-20.0
Pakistan	331	342	50	13	405	41	0.1	22.4
Sri Lanka	343	353	116	14	483	76	0.1	40.8
Oceania	12,382	9,299	672	1,345	11,316	5,541	2.5	-8.6
Australia	10,597	8,021	590	1,064	9,675	4,764	2.1	-8.7
Fiji	16	18	5	3	26	7	0.0	62.5
New Zealand	1,769	1,260	77	278	1,615	770	0.4	-8.7
Other Asia & the Pacific	226	17	13	10	40	14	0.0	-82.3
Europe	41,218	28,271	3,301	2,290	33,862	14,778	7.5	-17.8
Northern Europe	11,560	8,433	972	249	9,654	3,916	2.1	-16.5
Denmark	526	294	56	14	364	137	0.1	-30.8
Finland	357	252	30	14	296	114	0.1	-17.1
Iceland	29	31	5	2	38	15	0.0	31.0
Ireland	740	710	60	8	778	337	0.2	5.1
Norway	291	335	29	13	377	138	0.1	29.6
Sweden	569	346	73	30	449	149	0.1	-21.1
United Kingdom	9,048	6,465	719	168	7,352	3,026	1.6	-18.7
Western Europe	16,803	9,717	1,518	1,822	13,057	5,438	2.9	-22.3
Austria	495	315	29	19	363	144	0.1	-26.7
Belgium	902	751	78	61	890	400	0.2	-1.3
France	7,908	3,717	909	1,508	6,134	2,565	1.4	-22.4
Germany	5,059	3,356	255	111	3,722	1,566	0.8	-26.4
Luxembourg	28	29	8	7	44	14	0.0	57.1
Monaco	4	2	1	2	5	1	0.0	25.0
Netherlands	1,524	1,059	157	54	1,270	501	0.3	-16.7
Switzerland	883	488	81	60	629	247	0.1	-28.8
Central / Eastern Europe	4,871	3,713	458	95	4,266	2,296	0.9	-12.4
Bulgaria	97	67	15	3	85	31	0.0	-12.4
Czech Republic	213	186	23	5	214	96	0.0	0.5
Estonia	84	18	5	3	26	9	0.0	-69.0
Hungary	116	89	12	18	119	46	0.0	2.6
Kazakhstan	88	52	48	2	102	64	0.0	15.9
Kyrgyzstan	22	14	11	3	28	12	0.0	27.3
Latvia	61	85	10	2	97	41	0.0	59.0
Lithuania	67	61	8	1	70	34	0.0	4.5
Poland	926	527	33	5	565	298	0.1	-39.0
Romania	252	106	15	14	135	73	0.0	-46.4
Russian Federation	2,406	2,151	182	23	2,356	1,322	0.5	-2.1
Slovakia	104	77	12	7	96	41	0.0	-7.7
Ukraine	405	243	70	5	318	193	0.1	-21.5
Uzbekistan	30	37	14	4	55	36	0.0	83.3

International Tourist Arrivals to Cambodia by Country of Residence in September 2019

(by all means of transportation)

Regions Country of Residence	2018	2019			Total	Female	Share	Change
		Purposes of Visit					2019*	2019*/18
		Holiday	Business	Others			(%)	(%)
Grand Total	426,274	324,218	118,652	11,039	453,909	185,500	100.0	6.5
Southern Europe	6,183	5,428	280	86	5,794	2,718	1.3	-6.3
Croatia	137	38	6	11	55	24	0.0	-59.9
Greece	111	91	7	6	104	35	0.0	-6.3
Italy	1,452	1,056	137	37	1,230	468	0.3	-15.3
Malta	50	59	1	2	62	19	0.0	24.0
Portugal	369	331	25	4	360	171	0.1	-2.4
Serbia	68	44	4	3	51	18	0.0	-25.0
Slovenia	80	52	11	3	66	31	0.0	-17.5
Spain	3,916	3,757	89	20	3,866	1,952	0.9	-1.3
East Mediterranean Europe	1,740	964	62	31	1,057	398	0.2	-39.3
Israel	1,296	635	17	8	660	294	0.1	-49.1
Turkey	444	329	45	23	397	104	0.1	-10.6
Other Europe	61	16	11	7	34	12	0.0	-44.3
Americas	20,085	11,985	1,462	3,662	17,109	7,446	3.8	-14.8
North America	18,075	10,480	1,410	3,622	15,512	6,670	3.4	-14.2
Canada	2,956	1,673	320	444	2,437	1,016	0.5	-17.6
Mexico	672	712	20	13	745	394	0.2	10.9
United States of America	14,447	8,095	1,070	3,165	12,330	5,260	2.7	-14.7
Central America	75	95	7	6	108	51	0.0	44.0
Costa Rica	58	71	2	1	74	38	0.0	27.6
Honduras	9	5	4	2	11	2	0.0	22.2
Jamaica	8	19	1	3	23	11	0.0	187.5
South America	1,911	1,403	42	29	1,474	721	0.3	-22.9
Argentina	365	226	3	5	234	92	0.1	-35.9
Brazil	637	335	19	9	363	167	0.1	-43.0
Chile	357	312	6	4	322	163	0.1	-9.8
Colombia	339	282	6	2	290	158	0.1	-14.5
Ecuador	47	30	2	2	34	16	0.0	-27.7
Peru	106	167	1	3	171	96	0.0	61.3
Uruguay	44	31	1	2	34	14	0.0	-22.7
Venezuela	16	20	4	2	26	15	0.0	62.5
Other America	24	7	3	5	15	4	0.0	-37.5
Africa	783	742	149	35	926	377	0.2	18.3
North Africa	110	100	16	7	123	55	0.0	11.8
Morocco	77	54	11	2	67	35	0.0	-13.0
Sudan	17	18	2	3	23	7	0.0	35.3
Tunisia	16	28	3	2	33	13	0.0	106.3
Subsaharan Africa	660	639	132	25	796	320	0.2	20.6
Cameroon	16	49	6	3	58	23	0.0	262.5
Congo	19	15	1	1	17	4	0.0	-10.5
Ghana	18	9	7	2	18	5	0.0	0.0
Kenya	24	61	3	4	68	33	0.0	183.3
Liberia	21	34	2	1	37	6	0.0	76.2
Nigeria	30	21	18	3	42	5	0.0	40.0
South Africa	489	410	85	5	500	219	0.1	2.2
Tanzania	4	3	1	1	5	1	0.0	25.0
Uganda	23	26	7	4	37	19	0.0	60.9
Zimbabwe	16	11	2	1	14	5	0.0	-12.5
Other Africa	13	3	1	3	7	2	0.0	-46.2
Middle East	376	353	42	27	422	68	0.1	12.2
Egypt	89	105	10	3	118	28	0.0	32.6
Iraq	27	27	11	3	41	10	0.0	51.9
Jordan	28	50	2	2	54	5	0.0	92.9
Kuwait	19	22	3	7	32	4	0.0	68.4
Oman	49	12	1	1	14	2	0.0	-71.4
Palestine	14	5	1	2	8	1	0.0	-42.9
Qatar	5	4	1	1	6	1	0.0	20.0
Saudi Arabia	28	33	1	2	36	4	0.0	28.6
Syria	34	33	5	1	39	6	0.0	14.7
United Arab Emirates	10	17	3	2	22	3	0.0	120.0
Yemen	64	42	2	1	45	3	0.0	-29.7
Other Middle East	9	3	2	2	7	1	0.0	-22.2