



KINGDOM OF CAMBODIA
NATION RELIGION KING



TOURISM STATISTICS REPORT

November 2019

MINISTRY OF TOURISM
NATIONAL INSTITUTE OF TOURISM
TOURISM STATISTICS DEPARTMENT
No. A3, Street 169, Sangkat Veal Vong, Khan 7 Makara, Phnom Penh, Cambodia.
Fax: +855 23 885003
E-mail: kong@tourism.gov.kh
Website: www.tourism.gov.kh

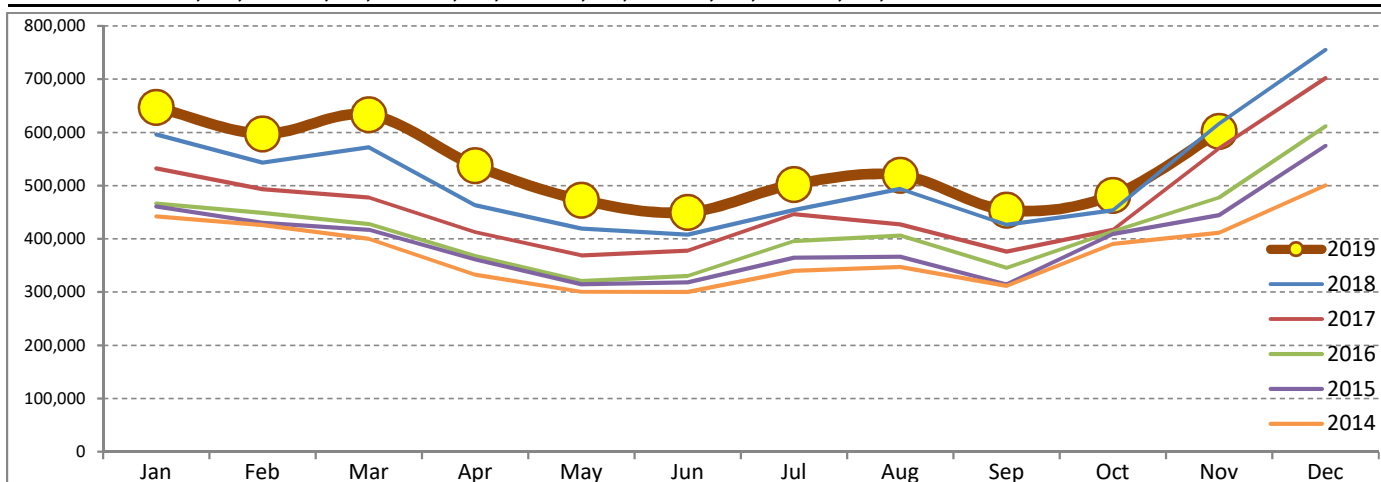
Tourism Highlights

Int'l Tourist Arrivals, Average Length of Stays, Hotel Occupancy & Int'l Tourism Receipts 1993 - 2018

Years	Int'l Tourist Arrivals		Average Length	Hotel Occupancy	Int'l Tourism Receipts
	Number	Change (%)	of Stays (Days)	(%)	(Million US\$)
1993	118,183	-	N/A	N/A	N/A
1994	176,617	49.4	N/A	N/A	N/A
1995	219,680	24.4	8.00	37.0	100
1996	260,489	18.6	7.50	40.0	118
1997	218,843	-16.0	6.40	30.0	103
1998	286,524	30.9	5.20	40.0	166
1999	367,743	28.3	5.50	44.0	190
2000	466,365	26.8	5.50	45.0	228
2001	604,919	29.7	5.50	48.0	304
2002	786,524	30.0	5.80	50.0	379
2003	701,014	-10.9	5.50	50.0	347
2004	1,055,202	50.5	6.30	52.0	578
2005	1,421,615	34.7	6.30	52.0	832
2006	1,700,041	19.6	6.50	54.8	1,049
2007	2,015,128	18.5	6.50	54.8	1,400
2008	2,125,465	5.5	6.65	62.7	1,595
2009	2,161,577	1.7	6.45	63.6	1,561
2010	2,508,289	16.0	6.45	65.7	1,786
2011	2,881,862	14.9	6.50	66.2	1,912
2012	3,584,307	24.4	6.30	68.5	2,210
2013	4,210,165	17.5	6.75	69.5	2,547
2014	4,502,775	7.0	6.50	67.6	2,736
2015	4,775,231	6.1	6.80	70.2	3,012
2016	5,011,712	5.0	6.30	68.9	3,212
2017	5,602,157	11.8	6.60	71.3	3,638
2018	6,201,077	10.7	7.00	72.2	4,375

International Tourist Arrivals to Cambodia

Months	2014	2015	2016	2017	2018	2019	Change (%)				
							15/14	16/15	17/16	18/17	2019*/18
Q1	1,267,922	1,307,836	1,342,477	1,502,896	1,711,253	1,877,853	3.1	2.6	11.9	13.9	9.7
Jan	442,045	460,577	466,086	532,206	596,241	647,206	4.2	1.2	14.2	12.0	8.5
Feb	425,801	430,207	448,468	493,316	542,937	597,483	1.0	4.2	10.0	10.1	10.0
Mar	400,076	417,052	427,923	477,374	572,075	633,164	4.2	2.6	11.6	19.8	10.7
Q2	933,446	994,154	1,018,455	1,159,783	1,290,407	1,460,621	6.5	2.4	13.9	11.3	13.2
Apr	332,690	361,139	367,684	412,925	463,423	537,656	8.6	1.8	12.3	12.2	16.0
May	300,302	314,748	320,601	368,809	419,171	472,952	4.8	1.9	15.0	13.7	12.8
Jun	300,454	318,267	330,170	378,049	407,813	450,013	5.9	3.7	14.5	7.9	10.3
Q3	998,690	1,044,880	1,147,483	1,250,082	1,374,373	1,475,832	4.6	9.8	8.9	9.9	7.4
Jul	340,091	364,325	395,761	446,627	454,056	502,421	7.1	8.6	12.9	1.7	10.7
Aug	347,211	366,096	406,214	427,224	494,043	519,502	5.4	11.0	5.2	15.6	5.2
Sep	311,388	314,459	345,508	376,231	426,274	453,909	1.0	9.9	8.9	13.3	6.5
Q4	1,302,717	1,428,361	1,503,297	1,689,396	1,825,044	1,083,824	9.6	5.2	12.4	8.0	
Oct	390,637	408,922	414,077	417,039	453,370	481,782	4.7	1.3	0.7	8.7	6.3
Nov	411,501	444,640	477,686	570,471	616,549	602,042	8.1	7.4	19.4	8.1	-2.4
Dec	500,579	574,799	611,534	701,886	755,125		14.8	6.4	14.8	7.6	
Total	4,502,775	4,775,231	5,011,712	5,602,157	6,201,077	5,898,130	6.1	5.0	11.8	10.7	8.3



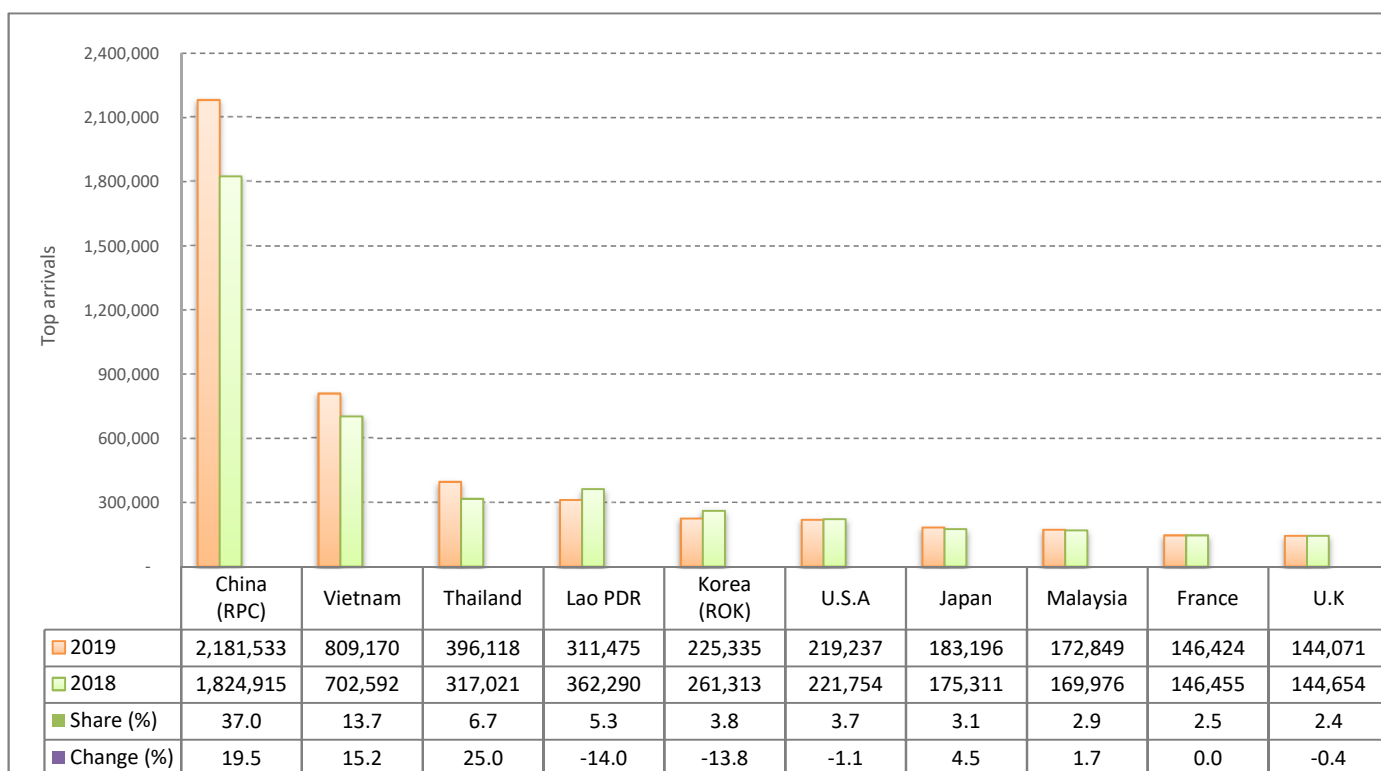
CAMBODIA: TOURISM STATISTICS REPORT IN THE FIRST ELEVEN MONTHS 2019

I. INBOUND TOURISM

1. International tourist arrivals in January - November 2019

	Inbound tourism			Share (%) 2019*	Change (%)	
	2017	2018	2019		18/17	2019*/18
Air	2,977,493	3,683,783	4,051,221	68.7	23.7	10.0
Phnom Penh Int'l Airport (PNH)	1,280,247	1,738,767	1,896,773	32.2	35.8	9.1
Siem Reap Int'l Airport (REP)	1,624,137	1,745,983	1,517,226	25.7	7.5	-13.1
Kong Keng (KOS)	73,109	199,033	637,222	10.8	172.2	220.2
Land and Waterways	1,922,778	1,762,169	1,846,909	31.3	-8.4	4.8
Land	1,793,905	1,633,937	1,717,061	29.1	-8.9	5.1
Waterways	128,873	128,232	129,848	2.2	-0.5	1.3
Total	4,900,271	5,445,952	5,898,130	100.0	11.1	8.3

2. Top ten markets arrivals in January - November 2019



II. OUTBOUND TOURISM

Outbound tourism in January - November 2019

	Outbound tourism			Change (%)	
	2017	2018	2019	18/17	2019*/18
Cambodian Outbound Tourists	1,612,525	1,814,336	1,872,500	12.5	3.2
International Tourists Departure	4,590,230	5,141,545	5,633,921	12.0	9.6

III. INTERNAL TOURISM

Foreign visitor arrivals to the regions in January - November 2019

	Arrivals			Share (%) 2019*	Change (%)	
	2017	2018	2019		18/17	2019*/18
Phnom Penh & Surrounding	2,710,208	3,122,774	3,900,863	55.1	15.2	24.9
Siem Reap Angkor	2,190,063	2,323,168	1,997,267	28.2	6.1	-14.0
Coastal Areas	666,939	796,267	1,111,031	15.7	19.4	39.5
Eco-tourism Areas	65,373	68,336	74,014	1.0	4.5	8.3
Total	5,632,583	6,310,545	7,083,175	100.0	12.0	12.2

International Tourist Arrivals to Cambodia by Country of Residence in January - November 2019

(by all means of transportation)

Regions Country of Residence	2018	2019			Total	Female	Share	Change
		Purposes of Visit					2019*	2019*/18
		Holiday	Business	Others			(%)	(%)
Grand Total	5,445,952	4,422,384	1,299,602	176,144	5,898,130	2,439,422	100.0	8.3
Asia and the Pacific	4,374,241	3,531,571	1,250,051	84,308	4,865,930	1,960,766	82.5	11.2
ASEAN (Southeast Asia)	1,764,090	1,743,863	152,039	34,759	1,930,661	861,321	32.7	9.4
Brunei Darussalam	677	949	24	46	1,019	473	0.0	50.5
Indonesia	47,256	31,826	24,523	1,496	57,845	17,074	1.0	22.4
Lao PDR	362,290	302,662	1,091	7,722	311,475	129,575	5.3	-14.0
Malaysia	169,976	148,413	21,671	2,765	172,849	54,450	2.9	1.7
Myanmar	18,674	13,642	5,969	1,033	20,644	8,580	0.4	10.5
Philippines	76,024	73,955	13,637	1,610	89,202	54,263	1.5	17.3
Singapore	69,580	65,399	5,328	1,612	72,339	23,628	1.2	4.0
Thailand	317,021	348,038	38,444	9,636	396,118	155,407	6.7	25.0
Vietnam	702,592	758,979	41,352	8,839	809,170	417,871	13.7	15.2
Northeast Asia	2,395,021	1,610,865	1,079,770	28,876	2,719,511	1,019,308	46.1	13.5
China	1,824,915	1,170,221	999,018	12,294	2,181,533	802,651	37.0	19.5
Hong Kong (China)	10,301	1,560	157	102	1,819	385	0.0	-82.3
Japan	175,311	149,972	28,456	4,768	183,196	71,748	3.1	4.5
Korea (ROK)	261,313	195,612	22,107	7,616	225,335	94,006	3.8	-13.8
Macau (China)	508	129	41	31	201	44	0.0	-60.4
Mongolia	673	1,025	65	58	1,148	514	0.0	70.6
Taiwan (China)	122,000	92,346	29,926	4,007	126,279	49,960	2.1	3.5
Southern Asia	69,540	73,767	10,343	1,354	85,464	22,033	1.4	22.9
Afghanistan	240	262	40	33	335	99	0.0	39.6
Bangladesh	2,792	4,799	1,260	227	6,286	750	0.1	125.1
Bhutan	164	164	23	48	235	82	0.0	43.3
India	55,361	57,892	6,696	489	65,077	18,300	1.1	17.6
Iran	1,411	1,024	83	45	1,152	378	0.0	-18.4
Nepal	2,816	2,891	530	227	3,648	1,010	0.1	29.5
Pakistan	3,180	3,625	635	120	4,380	560	0.1	37.7
Sri Lanka	3,576	3,110	1,076	165	4,351	854	0.1	21.7
Oceania	136,593	101,575	7,328	18,597	127,500	57,071	2.2	-6.7
Australia	114,630	85,996	6,242	14,677	106,915	48,002	1.8	-6.7
Fiji	234	374	69	56	499	186	0.0	113.2
New Zealand	21,729	15,205	1,017	3,864	20,086	8,883	0.3	-7.6
Other Asia & the Pacific	8,997	1,501	571	722	2,794	1,033	0.0	-68.9
Europe	725,970	634,956	31,599	35,405	701,960	323,295	11.9	-3.3
Northern Europe	197,107	178,338	9,737	2,865	190,940	83,593	3.2	-3.1
Denmark	11,733	10,022	437	203	10,662	4,916	0.2	-9.1
Finland	6,623	4,615	308	137	5,060	2,205	0.1	-23.6
Iceland	689	710	57	45	812	350	0.0	17.9
Ireland	11,204	10,381	545	137	11,063	5,014	0.2	-1.3
Norway	8,602	6,971	246	219	7,436	3,405	0.1	-13.6
Sweden	13,602	10,665	688	483	11,836	4,851	0.2	-13.0
United Kingdom	144,654	134,974	7,456	1,641	144,071	62,852	2.4	-0.4
Western Europe	304,197	255,985	14,459	29,637	300,081	134,030	5.1	-1.4
Austria	9,955	8,812	336	431	9,579	4,380	0.2	-3.8
Belgium	16,423	15,556	821	845	17,222	7,890	0.3	4.9
France	146,455	113,544	8,440	24,440	146,424	65,814	2.5	0.0
Germany	86,975	78,936	2,554	1,898	83,388	36,802	1.4	-4.1
Luxembourg	649	747	60	40	847	362	0.0	30.5
Monaco	81	48	14	17	79	24	0.0	-2.5
Netherlands	25,730	23,544	1,338	708	25,590	11,375	0.4	-0.5
Switzerland	17,929	14,798	896	1,258	16,952	7,383	0.3	-5.4
Central / Eastern Europe	112,734	94,461	3,733	1,486	99,680	52,618	1.7	-11.6
Bulgaria	2,555	2,424	100	73	2,597	1,164	0.0	1.6
Czech Republic	6,248	5,964	143	89	6,196	2,773	0.1	-0.8
Estonia	2,973	1,098	51	35	1,184	542	0.0	-60.2
Hungary	4,882	5,101	148	109	5,358	2,674	0.1	9.8
Kazakhstan	1,789	1,431	370	56	1,857	948	0.0	3.8
Kyrgyzstan	266	240	70	35	345	163	0.0	29.7
Latvia	1,329	1,098	68	26	1,192	634	0.0	-10.3
Lithuania	1,977	1,910	65	28	2,003	1,091	0.0	1.3
Poland	18,104	16,949	297	106	17,352	8,808	0.3	-4.2
Romania	3,416	2,868	144	107	3,119	1,622	0.1	-8.7
Russian Federation	58,685	46,380	1,535	626	48,541	26,805	0.8	-17.3
Slovakia	3,401	2,567	102	66	2,735	1,306	0.0	-19.6
Ukraine	6,595	6,047	520	76	6,643	3,829	0.1	0.7
Uzbekistan	514	384	120	54	558	259	0.0	8.6

International Tourist Arrivals to Cambodia by Country of Residence in January - November 2019

(by all means of transportation)

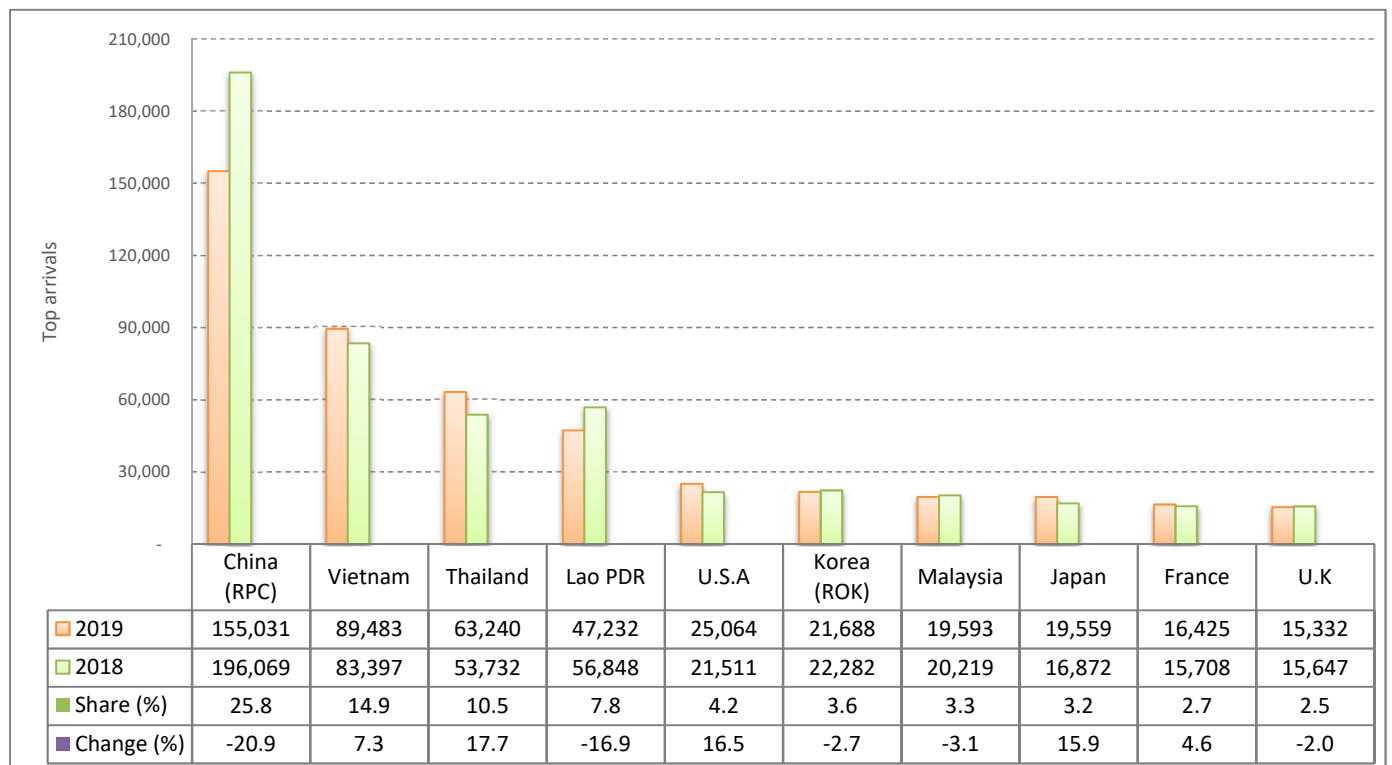
Regions Country of Residence	2018		2019			Share		Change
	Purposes of Visit			Total	Female	2019*	2019*/18	
	Holiday	Business	Others					(%)
Grand Total	5,445,952	4,422,384	1,299,602	176,144	5,898,130	2,439,422	100.0	8.3
Southern Europe	86,845	86,466	2,756	887	90,109	43,754	1.5	3.8
Croatia	2,074	1,136	65	50	1,251	575	0.0	-39.7
Greece	1,737	1,670	77	61	1,808	811	0.0	4.1
Italy	31,077	32,989	1,363	359	34,711	15,973	0.6	11.7
Malta	405	430	18	21	469	200	0.0	15.8
Portugal	6,299	7,160	212	60	7,432	3,801	0.1	18.0
Serbia	1,125	963	57	48	1,068	533	0.0	-5.1
Slovenia	1,378	1,313	113	51	1,477	590	0.0	7.2
Spain	42,750	40,805	851	237	41,893	21,271	0.7	-2.0
East Mediterranean Europe	19,741	19,088	720	348	20,156	8,905	0.3	2.1
Israel	12,820	13,924	345	109	14,378	6,519	0.2	12.2
Turkey	6,921	5,164	375	239	5,778	2,386	0.1	-16.5
Other Europe	5,346	618	194	182	994	395	0.0	-81.4
Americas	329,687	241,942	15,900	55,626	313,468	149,219	5.3	-4.9
North America	284,547	212,320	14,789	54,994	282,103	132,570	4.8	-0.9
Canada	54,815	43,731	3,249	6,825	53,805	24,979	0.9	-1.8
Mexico	7,978	8,727	192	142	9,061	4,733	0.2	13.6
United States of America	221,754	159,862	11,348	48,027	219,237	102,858	3.7	-1.1
Central America	1,791	1,003	86	62	1,151	557	0.0	-35.7
Costa Rica	1,364	715	27	26	768	370	0.0	-43.7
Honduras	167	125	38	15	178	92	0.0	6.6
Jamaica	260	163	21	21	205	95	0.0	-21.2
South America	41,027	28,285	913	472	29,670	15,883	0.5	-27.7
Argentina	10,430	5,259	92	63	5,414	2,793	0.1	-48.1
Brazil	11,800	8,688	222	90	9,000	4,753	0.2	-23.7
Chile	7,488	5,971	322	60	6,353	3,406	0.1	-15.2
Colombia	7,206	3,733	119	98	3,950	2,156	0.1	-45.2
Ecuador	730	560	36	45	641	315	0.0	-12.2
Peru	1,768	1,612	39	54	1,705	997	0.0	-3.6
Uruguay	1,269	2,043	38	33	2,114	1,214	0.0	66.6
Venezuela	336	419	45	29	493	249	0.0	46.7
Other America	2,322	334	112	98	544	209	0.0	-76.6
Africa	11,474	9,558	1,569	449	11,576	5,079	0.2	0.9
North Africa	1,271	1,706	99	80	1,885	846	0.0	48.3
Morocco	796	823	48	23	894	384	0.0	12.3
Sudan	201	151	22	36	209	62	0.0	4.0
Tunisia	274	732	29	21	782	400	0.0	185.4
Subsaharan Africa	9,750	7,720	1,419	323	9,462	4,150	0.2	-3.0
Cameroon	239	257	49	33	339	100	0.0	41.8
Congo	282	337	28	25	390	167	0.0	38.3
Ghana	478	247	49	28	324	58	0.0	-32.2
Kenya	456	376	51	51	478	258	0.0	4.8
Liberia	1,373	347	19	17	383	65	0.0	-72.1
Nigeria	498	194	292	54	540	84	0.0	8.4
South Africa	6,033	5,346	860	52	6,258	3,074	0.1	3.7
Tanzania	97	159	18	16	193	52	0.0	99.0
Uganda	146	318	28	34	380	186	0.0	160.3
Zimbabwe	148	139	25	13	177	106	0.0	19.6
Other Africa	453	132	51	46	229	83	0.0	-49.4
Middle East	4,580	4,357	483	356	5,196	1,063	0.1	13.4
Egypt	758	891	95	37	1,023	235	0.0	35.0
Iraq	551	324	57	93	474	73	0.0	-14.0
Jordan	453	486	81	24	591	98	0.0	30.5
Kuwait	429	317	48	41	406	75	0.0	-5.4
Oman	237	220	19	14	253	52	0.0	6.8
Palestine	133	74	17	13	104	15	0.0	-21.8
Qatar	107	62	18	18	98	14	0.0	-8.4
Saudi Arabia	286	344	24	29	397	55	0.0	38.8
Syria	449	408	29	18	455	81	0.0	1.3
United Arab Emirates	222	654	40	22	716	231	0.0	222.5
Yemen	611	488	25	20	533	85	0.0	-12.8
Other Middle East	344	89	30	27	146	49	0.0	-57.6

I. INBOUND TOURISM

1. International tourist arrivals in November 2019

	Inbound tourism			Share (%) 2019*	Change (%)	
	2017	2018	2019		18/17	2019*/18
Air	324,897	379,733	339,886	56.5	16.9	-10.5
Phnom Penh Int'l Airport (PNH)	136,034	177,774	170,858	28.4	30.7	-3.9
Siem Reap Int'l Airport (REP)	181,471	167,666	134,561	22.4	-7.6	-19.7
Kong Keng (KOS)	7,392	34,293	34,467	5.7	363.9	0.5
Land and Waterways	245,574	236,816	262,156	43.5	-3.6	10.7
Land	233,247	218,832	243,330	40.4	-6.2	11.2
Waterways	12,327	17,984	18,826	3.1	45.9	4.7
Total	570,471	616,549	602,042	100.0	8.1	-2.4

2. Top ten markets arrivals in November 2019



II. OUTBOUND TOURISM

Outbound tourism in November 2019

	Outbound tourism			Change (%)	
	2017	2018	2019	18/17	2019*/18
Cambodian Outbound Tourists	146,254	171,628	164,608	17.3	-4.1
International Tourists Departure	443,539	492,390	521,486	11.0	5.9

III. INTERNAL TOURISM

Foreign visitor arrivals to the regions in November 2019

	Arrivals			Share (%) 2019*	Change (%)	
	2017	2018	2019		18/17	2019*/18
Phnom Penh & Surrounding	321,240	383,424	408,782	57.7	19.4	6.6
Siem Reap Angkor	249,231	233,125	193,260	27.3	-6.5	-17.1
Coastal Areas	59,159	84,292	99,554	14.0	42.5	18.1
Eco-tourism Areas	6,550	6,935	7,005	1.0	5.9	1.0
Total	636,180	707,776	708,601	100.0	11.3	0.1

International Tourist Arrivals to Cambodia by Country of Residence in November 2019

(by all means of transportation)

Regions Country of Residence	2018	2019			Total	Female	Share	Change
		Purposes of Visit					2019*	2019*/18
		Holiday	Business	Others			(%)	(%)
Grand Total	616,549	486,846	91,038	24,158	602,042	250,773	100.0	-2.4
Asia and the Pacific	507,740	376,323	85,687	15,090	477,100	190,111	79.2	-6.0
ASEAN (Southeast Asia)	238,774	226,676	12,055	6,878	245,609	104,594	40.8	2.9
Brunei Darussalam	56	89	3	8	100	49	0.0	78.6
Indonesia	5,003	3,577	2,200	195	5,972	1,928	1.0	19.4
Lao PDR	56,848	45,944	182	1,106	47,232	19,489	7.8	-16.9
Malaysia	20,219	16,869	2,166	558	19,593	6,818	3.3	-3.1
Myanmar	2,570	1,519	543	390	2,452	788	0.4	-4.6
Philippines	9,037	7,673	1,296	497	9,466	5,656	1.6	4.7
Singapore	7,912	6,985	501	585	8,071	3,134	1.3	2.0
Thailand	53,732	59,278	2,510	1,452	63,240	24,159	10.5	17.7
Vietnam	83,397	84,742	2,654	2,087	89,483	42,573	14.9	7.3
Northeast Asia	248,546	130,443	71,584	6,107	208,134	76,339	34.6	-16.3
China	196,069	88,360	63,116	3,555	155,031	55,457	25.8	-20.9
Hong Kong (China)	1,736	143	12	8	163	19	0.0	-90.6
Japan	16,872	15,504	3,041	1,014	19,559	7,460	3.2	15.9
Korea (ROK)	22,282	18,065	2,336	1,287	21,688	8,926	3.6	-2.7
Macau (China)	37	15	2	3	20	7	0.0	-45.9
Mongolia	51	162	10	9	181	61	0.0	254.9
Taiwan (China)	11,499	8,194	3,067	231	11,492	4,409	1.9	-0.1
Southern Asia	8,009	8,071	1,202	241	9,514	2,570	1.6	18.8
Afghanistan	28	17	5	7	29	5	0.0	3.6
Bangladesh	319	451	210	37	698	60	0.1	118.8
Bhutan	7	13	4	10	27	7	0.0	285.7
India	5,979	6,534	734	76	7,344	2,213	1.2	22.8
Iran	496	105	15	8	128	36	0.0	-74.2
Nepal	360	296	53	66	415	117	0.1	15.3
Pakistan	366	350	66	22	438	55	0.1	19.7
Sri Lanka	454	305	115	15	435	77	0.1	-4.2
Oceania	12,191	10,941	706	1,680	13,327	6,433	2.2	9.3
Australia	10,374	9,543	618	1,320	11,481	5,562	1.9	10.7
Fiji	27	21	4	7	32	11	0.0	18.5
New Zealand	1,790	1,377	84	353	1,814	860	0.3	1.3
Other Asia & the Pacific	220	192	140	184	516	175	0.1	134.5
Europe	75,182	80,329	3,500	3,089	86,918	42,273	14.4	15.6
Northern Europe	20,144	19,180	984	259	20,423	9,303	3.4	1.4
Denmark	887	859	40	22	921	410	0.2	3.8
Finland	615	555	35	15	605	284	0.1	-1.6
Iceland	55	93	13	9	115	50	0.0	109.1
Ireland	995	1,065	51	12	1,128	505	0.2	13.4
Norway	740	920	19	13	952	466	0.2	28.6
Sweden	1,205	1,249	74	47	1,370	565	0.2	13.7
United Kingdom	15,647	14,439	752	141	15,332	7,023	2.5	-2.0
Western Europe	33,329	35,274	1,704	2,421	39,399	18,873	6.5	18.2
Austria	1,050	1,304	33	45	1,382	659	0.2	31.6
Belgium	1,801	1,770	98	68	1,936	841	0.3	7.5
France	15,708	13,414	1,032	1,979	16,425	7,879	2.7	4.6
Germany	10,165	13,748	295	168	14,211	7,028	2.4	39.8
Luxembourg	58	68	8	5	81	36	0.0	39.7
Monaco	9	11	1	2	14	6	0.0	55.6
Netherlands	2,581	2,552	142	60	2,754	1,204	0.5	6.7
Switzerland	1,957	2,407	95	94	2,596	1,220	0.4	32.7
Central / Eastern Europe	11,318	14,176	438	219	14,833	8,063	2.5	31.1
Bulgaria	230	371	11	6	388	218	0.1	68.7
Czech Republic	581	885	16	7	908	409	0.2	56.3
Estonia	175	262	4	5	271	151	0.0	54.9
Hungary	673	779	18	7	804	445	0.1	19.5
Kazakhstan	117	113	41	8	162	94	0.0	38.5
Kyrgyzstan	16	10	5	9	24	7	0.0	50.0
Latvia	130	161	8	3	172	105	0.0	32.3
Lithuania	184	328	6	5	339	195	0.1	84.2
Poland	2,572	3,699	36	12	3,747	1,986	0.6	45.7
Romania	371	505	18	4	527	286	0.1	42.0
Russian Federation	5,007	5,969	187	133	6,289	3,486	1.0	25.6
Slovakia	472	369	11	9	389	195	0.1	-17.6
Ukraine	752	671	63	7	741	450	0.1	-1.5
Uzbekistan	38	54	14	4	72	36	0.0	89.5

International Tourist Arrivals to Cambodia by Country of Residence in November 2019

(by all means of transportation)

Regions Country of Residence	2018	2019			Total	Female	Share	Change
		Purposes of Visit					2019*	2019*/18
		Holiday	Business	Others			(%)	(%)
Grand Total	616,549	486,846	91,038	24,158	602,042	250,773	100.0	-2.4
Southern Europe	8,765	9,708	298	80	10,086	5,062	1.7	15.1
Croatia	197	136	4	2	142	66	0.0	-27.9
Greece	144	258	12	6	276	143	0.0	91.7
Italy	2,386	3,584	156	32	3,772	1,749	0.6	58.1
Malta	16	31	2	2	35	13	0.0	118.8
Portugal	787	991	21	5	1,017	543	0.2	29.2
Serbia	110	126	12	5	143	75	0.0	30.0
Slovenia	160	180	15	8	203	98	0.0	26.9
Spain	4,965	4,402	76	20	4,498	2,375	0.7	-9.4
East Mediterranean Europe	1,499	1,900	58	84	2,042	915	0.3	36.2
Israel	1,043	1,295	28	26	1,349	589	0.2	29.3
Turkey	456	605	30	58	693	326	0.1	52.0
Other Europe	127	91	18	26	135	57	0.0	6.3
Americas	32,282	28,743	1,665	5,879	36,287	17,691	6.0	12.4
North America	28,030	25,799	1,577	5,771	33,147	16,011	5.5	18.3
Canada	5,634	5,812	379	748	6,939	3,465	1.2	23.2
Mexico	885	1,099	29	16	1,144	639	0.2	29.3
United States of America	21,511	18,888	1,169	5,007	25,064	11,907	4.2	16.5
Central America	122	70	8	6	84	35	0.0	-31.1
Costa Rica	91	51	2	3	56	24	0.0	-38.5
Honduras	11	12	3	1	16	7	0.0	45.5
Jamaica	20	7	3	2	12	4	0.0	-40.0
South America	4,002	2,810	71	84	2,965	1,610	0.5	-25.9
Argentina	632	530	15	14	559	307	0.1	-11.6
Brazil	1,049	1,238	23	18	1,279	682	0.2	21.9
Chile	1,341	289	6	11	306	168	0.1	-77.2
Colombia	506	449	10	18	477	256	0.1	-5.7
Ecuador	95	60	5	7	72	42	0.0	-24.2
Peru	193	170	3	11	184	107	0.0	-4.7
Uruguay	115	42	4	3	49	27	0.0	-57.4
Venezuela	71	32	5	2	39	21	0.0	-45.1
Other America	128	64	9	18	91	35	0.0	-28.9
Africa	929	928	146	65	1,139	541	0.2	22.6
North Africa	95	130	18	8	156	65	0.0	64.2
Morocco	52	83	9	2	94	40	0.0	80.8
Sudan	22	8	5	5	18	5	0.0	-18.2
Tunisia	21	39	4	1	44	20	0.0	109.5
Subsaharan Africa	805	784	123	50	957	465	0.2	18.9
Cameroon	16	24	6	3	33	10	0.0	106.3
Congo	22	186	11	11	208	115	0.0	845.5
Ghana	96	20	4	5	29	7	0.0	-69.8
Kenya	44	24	2	4	30	22	0.0	-31.8
Liberia	30	27	1	3	31	6	0.0	3.3
Nigeria	43	24	14	6	44	10	0.0	2.3
South Africa	510	429	81	7	517	259	0.1	1.4
Tanzania	9	12	1	3	16	5	0.0	77.8
Uganda	20	21	2	6	29	18	0.0	45.0
Zimbabwe	15	17	1	2	20	13	0.0	33.3
Other Africa	29	14	5	7	26	11	0.0	-10.3
Middle East	416	523	40	35	598	157	0.1	43.8
Egypt	82	107	4	4	115	32	0.0	40.2
Iraq	19	26	2	3	31	7	0.0	63.2
Jordan	58	53	13	2	68	6	0.0	17.2
Kuwait	37	23	2	3	28	9	0.0	-24.3
Oman	14	29	2	2	33	7	0.0	135.7
Palestine	13	6	3	1	10	4	0.0	-23.1
Qatar	23	4	2	6	12	3	0.0	-47.8
Saudi Arabia	24	34	3	4	41	3	0.0	70.8
Syria	44	28	1	1	30	7	0.0	-31.8
United Arab Emirates	29	170	3	4	177	68	0.0	510.3
Yemen	52	35	2	1	38	8	0.0	-26.9
Other Middle East	21	8	3	4	15	3	0.0	-28.6