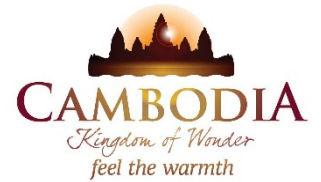




KINGDOM OF CAMBODIA
NATION RELIGION KING



TOURISM STATISTICS REPORT

February 2020

MINISTRY OF TOURISM
NATIONAL INSTITUTE OF TOURISM
TOURISM STATISTICS DEPARTMENT
No. A3, Street 169, Sangkat Veal Vong, Khan 7 Makara, Phnom Penh, Cambodia.
Fax: +855 23 885003
E-mail: kong@tourism.gov.kh
Website: www.tourism.gov.kh

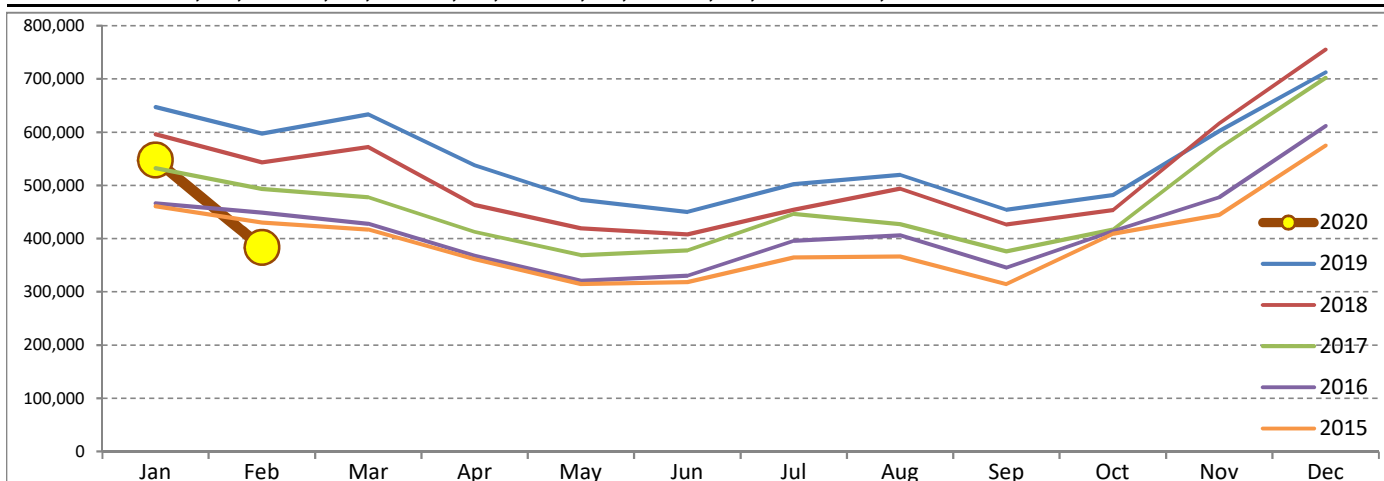
Tourism Highlights

Int'l Tourist Arrivals, Average Length of Stays, Hotel Occupancy & Int'l Tourism Receipts 1993 - 2019

Years	Int'l Tourist Arrivals		Average Length of Stays (Days)	Hotel Occupancy (%)	Int'l Tourism Receipts (Million US\$)
	Number	Change (%)			
1993	118,183	-	N/A	N/A	N/A
1994	176,617	49.4	N/A	N/A	N/A
1995	219,680	24.4	8.0	37.0	100
1996	260,489	18.6	7.5	40.0	118
1997	218,843	-16.0	6.4	30.0	103
1998	286,524	30.9	5.2	40.0	166
1999	367,743	28.3	5.5	44.0	190
2000	466,365	26.8	5.5	45.0	228
2001	604,919	29.7	5.5	48.0	304
2002	786,524	30.0	5.8	50.0	379
2003	701,014	-10.9	5.5	50.0	347
2004	1,055,202	50.5	6.3	52.0	578
2005	1,421,615	34.7	6.3	52.0	832
2006	1,700,041	19.6	6.5	54.8	1,049
2007	2,015,128	18.5	6.5	54.8	1,400
2008	2,125,465	5.5	6.7	62.7	1,595
2009	2,161,577	1.7	6.5	63.6	1,561
2010	2,508,289	16.0	6.5	65.7	1,786
2011	2,881,862	14.9	6.5	66.2	1,912
2012	3,584,307	24.4	6.3	68.5	2,210
2013	4,210,165	17.5	6.8	69.5	2,547
2014	4,502,775	7.0	6.5	67.6	2,736
2015	4,775,231	6.1	6.8	70.2	3,012
2016	5,011,712	5.0	6.3	68.9	3,212
2017	5,602,157	11.8	6.6	71.3	3,638
2018	6,201,077	10.7	7.0	72.2	4,375
2019	6,610,592	6.6	6.2	63.5	4,919

International Tourist Arrivals to Cambodia

Months	2015	2016	2017	2018	2019	2020	Change (%)				
							16/15	17/16	18/17	19/18	2020*/19
Q1	1,307,836	1,342,477	1,502,896	1,711,253	1,877,853	931,826	2.6	11.9	13.9	9.7	-50.4
Jan	460,577	466,086	532,206	596,241	647,206	547,963	1.2	14.2	12.0	8.5	-15.3
Feb	430,207	448,468	493,316	542,937	597,483	383,863	4.2	10.0	10.1	10.0	-35.8
Mar	417,052	427,923	477,374	572,075	633,164		2.6	11.6	19.8	10.7	
Q2	994,154	1,018,455	1,159,783	1,290,407	1,460,621	0	2.4	13.9	11.3	13.2	
Apr	361,139	367,684	412,925	463,423	537,656		1.8	12.3	12.2	16.0	
May	314,748	320,601	368,809	419,171	472,952		1.9	15.0	13.7	12.8	
Jun	318,267	330,170	378,049	407,813	450,013		3.7	14.5	7.9	10.3	
Q3	1,044,880	1,147,483	1,250,082	1,374,373	1,475,832	0	9.8	8.9	9.9	7.4	
Jul	364,325	395,761	446,627	454,056	502,421		8.6	12.9	1.7	10.7	
Aug	366,096	406,214	427,224	494,043	519,502		11.0	5.2	15.6	5.2	
Sep	314,459	345,508	376,231	426,274	453,909		9.9	8.9	13.3	6.5	
Q4	1,428,361	1,503,297	1,689,396	1,825,044	1,796,286	0	5.2	12.4	8.0	-1.6	
Oct	408,922	414,077	417,039	453,370	481,782		1.3	0.7	8.7	6.3	
Nov	444,640	477,686	570,471	616,549	602,042		7.4	19.4	8.1	-2.4	
Dec	574,799	611,534	701,886	755,125	712,462		6.4	14.8	7.6	-5.6	
Total	4,775,231	5,011,712	5,602,157	6,201,077	6,610,592	931,826	5.0	11.8	10.7	6.6	25.1



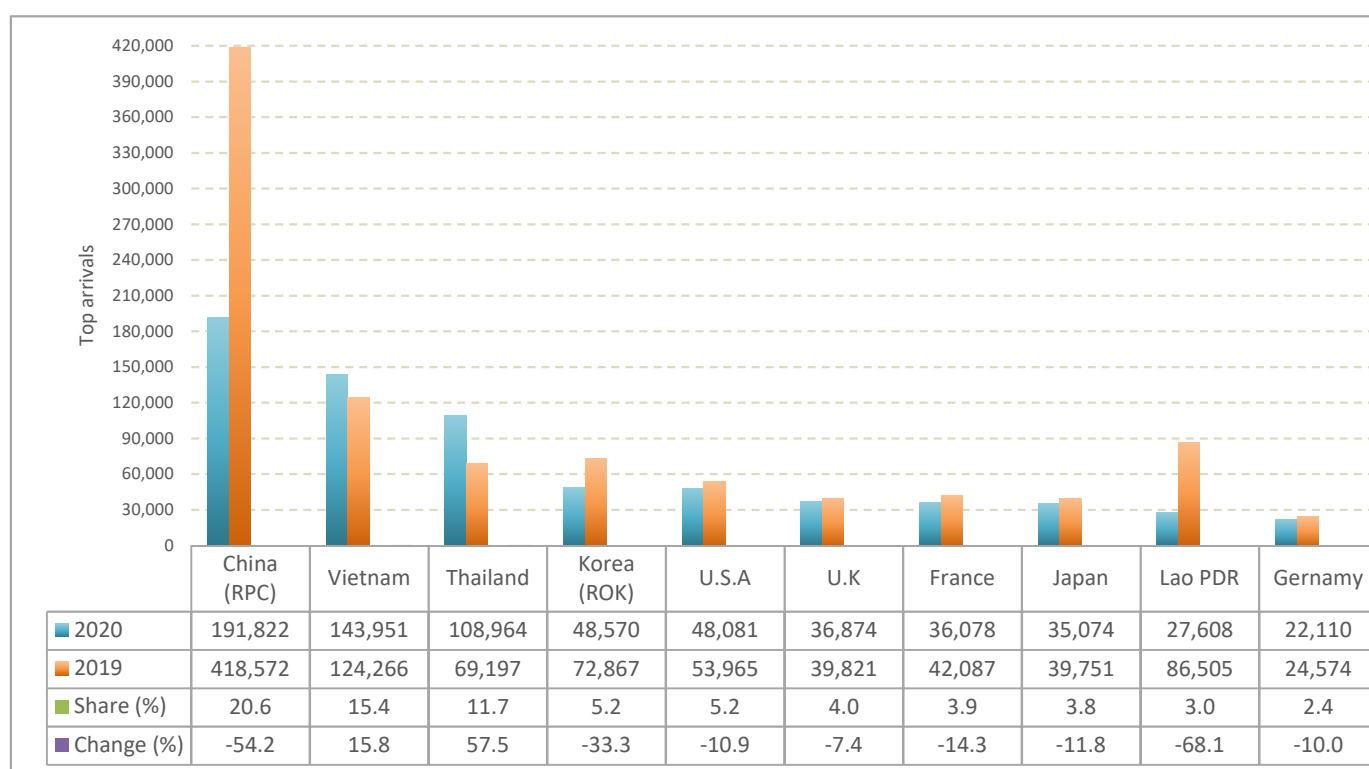
CAMBODIA: TOURISM STATISTICS REPORT IN THE FIRST TWO MONTHS 2020

I. INBOUND TOURISM

1. International tourist arrivals in January - February 2020

	Inbound tourism			Share (%) 2020*	Change (%)	
	2018	2019	2020		19/18	2020*/19
Air	762,518	842,679	542,585	58.2	10.5	-35.6
Phnom Penh Int'l Airport (PNH)	311,112	367,134	289,553	31.1	18.0	-21.1
Siem Reap Int'l Airport (REP)	431,788	400,442	217,738	23.4	-7.3	-45.6
Kong Keng (KOS)	19,618	75,103	35,294	3.8	282.8	-53.0
Land and Waterways	376,660	402,010	389,241	41.8	6.7	-3.2
Land	337,682	355,990	343,693	36.9	5.4	-3.5
Waterways	38,978	46,020	45,548	4.9	18.1	-1.0
Total	1,139,178	1,244,689	931,826	100.0	9.3	-25.1

2. Top ten markets arrivals in January - February 2020



II. OUTBOUND TOURISM

Outbound tourism in January - February 2020

	Outbound tourism			Change (%)	
	2018	2019	2020	19/18	2020*/19
Cambodian Outbound Tourists	289,279	300,749	258,537	4.0	-14.0
International Tourists Departure	1,103,939	1,137,882	961,205	3.1	-15.5

III. INTERNAL TOURISM

Domestic and foreign visitors' arrivals to the regions in January - February 2020

	Jan - Feb 2019		Jan - Feb 2020		Change 2020*/19 (%)	
	KHM	FOR	KHM	FOR	KHM	FOR
Phnom Penh	412,557	700,380	409,456	590,332	-0.8	-15.7
Siem Reap Angkor	264,208	544,309	212,571	341,494	-19.5	-37.3
Coastal Zone	857,179	204,434	902,180	218,829	5.2	7.0
Preah Sihanouk	296,110	130,105	213,138	129,370	-28.0	-0.6
Eco-tourism Zone	95,601	17,632	130,495	16,901	36.5	-4.1
Total	1,629,545	1,466,755	1,654,702	1,167,556	1.5	-20.4

Note:

KHM: Cambodia visitors

FOR: Foreign visitors

International Tourist Arrivals to Cambodia by Country of Residence in January - February 2020

(by all means of transportation)

Regions Country of Residence	2019		2020			Share 2020* (%)	Change 2020*/19 (%)	
	Purposes of Visit			Total	Female			
	Holiday	Business	Others					
Grand Total	1,244,689	762,767	126,642	42,417	931,826	405,948	100.0	-25.1
Asia and the Pacific	955,126	525,861	116,883	26,049	668,793	280,447	71.8	-30.0
ASEAN (Southeast Asia)	353,464	290,094	27,607	17,237	334,938	146,559	35.9	-5.2
Brunei Darussalam	311	123	5	6	134	36	0.0	-56.9
Indonesia	10,423	4,692	5,822	289	10,803	3,139	1.2	3.6
Lao PDR	86,505	25,730	177	1,701	27,608	14,465	3.0	-68.1
Malaysia	32,162	15,706	4,278	959	20,943	6,114	2.2	-34.9
Myanmar	3,967	1,467	355	369	2,191	743	0.2	-44.8
Philippines	14,169	8,449	2,452	751	11,652	7,204	1.3	-17.8
Singapore	12,416	7,248	998	430	8,676	2,335	0.9	-30.1
Thailand	69,197	98,386	6,976	3,602	108,964	43,907	11.7	57.5
Timor Leste	48	6	6	4	16	8	0.0	-66.7
Vietnam	124,266	128,287	6,538	9,126	143,951	68,608	15.4	15.8
Northeast Asia	557,899	204,041	86,005	4,459	294,505	119,216	31.6	-47.2
China	418,572	117,598	72,736	1,488	191,822	75,321	20.6	-54.2
Hong Kong (China)	772	209	13	40	262	116	0.0	-66.1
Japan	39,751	29,096	4,997	981	35,074	14,381	3.8	-11.8
Korea (ROK)	72,867	43,907	3,448	1,215	48,570	21,573	5.2	-33.3
Macau (China)	52	16	3	7	26	9	0.0	-50.0
Mongolia	369	240	12	13	265	135	0.0	-28.2
Taiwan (China)	25,516	12,975	4,796	715	18,486	7,681	2.0	-27.6
Southern Asia	14,102	12,850	1,965	207	15,022	3,831	1.6	6.5
Afghanistan	68	26	5	10	41	4	0.0	-39.7
Bangladesh	824	890	362	34	1,286	117	0.1	56.1
Bhutan	76	28	4	5	37	16	0.0	-51.3
India	10,963	9,986	1,174	90	11,250	3,189	1.2	2.6
Iran	185	225	12	13	250	96	0.0	35.1
Nepal	589	454	109	18	581	151	0.1	-1.4
Pakistan	784	793	134	17	944	131	0.1	20.4
Sri Lanka	613	448	165	20	633	127	0.1	3.3
Oceania	29,000	18,740	1,271	4,104	24,115	10,761	2.6	-16.8
Australia	24,782	16,130	1,071	2,969	20,170	9,085	2.2	-18.6
Fiji	82	39	13	13	65	17	0.0	-20.7
New Zealand	4,136	2,571	187	1,122	3,880	1,659	0.4	-6.2
Other Asia & the Pacific	661	136	35	42	213	80	0.0	-67.8
Europe	204,681	175,768	6,440	5,919	188,127	89,565	20.2	-8.1
Northern Europe	55,225	48,412	1,885	688	50,985	23,325	5.5	-7.7
Denmark	3,830	3,512	74	46	3,632	1,848	0.4	-5.2
Finland	1,977	1,669	67	25	1,761	728	0.2	-10.9
Iceland	287	180	3	9	192	103	0.0	-33.1
Ireland	2,231	1,973	105	42	2,120	917	0.2	-5.0
Norway	2,434	2,287	56	32	2,375	1,192	0.3	-2.4
Sweden	4,645	3,801	141	89	4,031	1,695	0.4	-13.2
United Kingdom	39,821	34,990	1,439	445	36,874	16,842	4.0	-7.4
Western Europe	86,214	67,083	3,057	4,620	74,760	33,969	8.0	-13.3
Austria	3,317	2,897	63	58	3,018	1,378	0.3	-9.0
Belgium	4,451	3,127	181	120	3,428	1,563	0.4	-23.0
France	42,087	30,627	1,805	3,646	36,078	16,900	3.9	-14.3
Germany	24,574	21,168	561	381	22,110	9,561	2.4	-10.0
Luxembourg	162	133	10	7	150	62	0.0	-7.4
Monaco	20	16	3	4	23	10	0.0	15.0
Netherlands	6,383	4,777	266	199	5,242	2,368	0.6	-17.9
Switzerland	5,220	4,338	168	205	4,711	2,127	0.5	-9.8
Central / Eastern Europe	36,569	36,089	846	192	37,127	19,887	4.0	1.5
Bulgaria	767	720	24	7	751	394	0.1	-2.1
Czech Republic	2,308	1,868	39	17	1,924	903	0.2	-16.6
Estonia	457	438	8	8	454	219	0.0	-0.7
Hungary	2,331	2,355	30	15	2,400	1,236	0.3	3.0
Kazakhstan	671	470	69	13	552	338	0.1	-17.7
Kyrgyzstan	101	98	13	8	119	71	0.0	17.8
Latvia	249	294	11	4	309	157	0.0	24.1
Lithuania	740	740	17	6	763	408	0.1	3.1
Poland	6,410	6,620	80	17	6,717	3,481	0.7	4.8
Romania	1,196	1,142	25	16	1,183	646	0.1	-1.1
Russian Federation	17,539	17,699	337	50	18,086	9,903	1.9	3.1
Slovakia	869	937	16	9	962	467	0.1	10.7
Ukraine	2,732	2,501	140	16	2,657	1,545	0.3	-2.7
Uzbekistan	199	207	37	6	250	119	0.0	25.6

International Tourist Arrivals to Cambodia by Country of Residence in January - February 2020

(by all means of transportation)

Regions Country of Residence	2019	2020			Total	Female	Share 2020* (%)	Change 2020*/19 (%)
		Purposes of Visit						
		Holiday	Business	Others				
Grand Total	1,244,689	762,767	126,642	42,417	931,826	405,948	100.0	-25.1
Southern Europe	20,091	17,847	523	183	18,553	9,078	2.0	-7.7
Croatia	560	490	13	17	520	260	0.1	-7.1
Greece	457	475	14	8	497	221	0.1	8.8
Italy	11,391	9,935	234	63	10,232	4,991	1.1	-10.2
Malta	111	98	2	6	106	46	0.0	-4.5
Portugal	1,633	1,446	33	12	1,491	763	0.2	-8.7
Serbia	470	439	6	4	449	243	0.0	-4.5
Slovenia	546	338	91	22	451	160	0.0	-17.4
Spain	4,923	4,626	130	51	4,807	2,394	0.5	-2.4
East Mediterranean Europe	6,272	6,242	115	216	6,573	3,253	0.7	4.8
Israel	4,683	4,319	49	41	4,409	2,147	0.5	-5.9
Turkey	1,589	1,923	66	175	2,164	1,106	0.2	36.2
Other Europe	310	95	14	20	129	53	0.0	-58.4
Americas	80,786	58,113	2,858	10,274	71,245	34,512	7.6	-11.8
North America	71,151	49,708	2,700	10,101	62,509	29,683	6.7	-12.1
Canada	15,615	10,810	585	1,752	13,147	6,121	1.4	-15.8
Mexico	1,571	1,208	39	34	1,281	680	0.1	-18.5
United States of America	53,965	37,690	2,076	8,315	48,081	22,882	5.2	-10.9
Central America	243	155	18	18	191	83	0.0	-21.4
Costa Rica	167	115	6	7	128	49	0.0	-23.4
Honduras	35	20	8	6	34	9	0.0	-2.9
Jamaica	41	20	4	5	29	25	0.0	-29.3
South America	9,207	8,180	132	141	8,453	4,712	0.9	-8.2
Argentina	2,289	2,179	17	21	2,217	1,201	0.2	-3.1
Brazil	3,141	3,292	45	38	3,375	1,886	0.4	7.4
Chile	1,974	1,353	20	14	1,387	783	0.1	-29.7
Colombia	865	730	20	23	773	417	0.1	-10.6
Ecuador	137	87	9	17	113	48	0.0	-17.5
Peru	330	262	5	10	277	228	0.0	-16.1
Uruguay	361	194	3	7	204	104	0.0	-43.5
Venezuela	110	83	13	11	107	45	0.0	-2.7
Other America	185	70	8	14	92	34	0.0	-50.3
Africa	2,813	2,145	376	111	2,632	1,253	0.3	-6.4
North Africa	713	353	21	16	390	151	0.0	-45.3
Morocco	185	243	8	5	256	97	0.0	38.4
Sudan	42	23	3	8	34	7	0.0	-19.0
Tunisia	486	87	10	3	100	47	0.0	-79.4
Subsaharan Africa	2,014	1,779	350	88	2,217	1,094	0.2	10.1
Cameroon	54	53	9	6	68	13	0.0	25.9
Congo	52	11	2	3	16	4	0.0	-69.2
Ghana	79	231	7	8	246	106	0.0	211.4
Kenya	66	85	5	13	103	65	0.0	56.1
Liberia	74	72	2	4	78	13	0.0	5.4
Nigeria	124	53	79	10	142	15	0.0	14.5
South Africa	1,438	1,172	236	28	1,436	797	0.2	-0.1
Tanzania	34	21	4	3	28	11	0.0	-17.6
Uganda	61	42	2	8	52	26	0.0	-14.8
Zimbabwe	32	39	4	5	48	44	0.0	50.0
Other Africa	86	13	5	7	25	8	0.0	-70.9
Middle East	1,283	880	85	64	1,029	171	0.1	-19.8
Egypt	172	211	23	5	239	64	0.0	39.0
Iraq	77	80	8	4	92	7	0.0	19.5
Jordan	119	102	17	6	125	18	0.0	5.0
Kuwait	83	50	7	13	70	5	0.0	-15.7
Oman	64	40	2	4	46	4	0.0	-28.1
Palestine	14	22	3	7	32	8	0.0	128.6
Qatar	17	8	2	4	14	2	0.0	-17.6
Saudi Arabia	84	75	3	4	82	6	0.0	-2.4
Syria	87	63	5	3	71	12	0.0	-18.4
United Arab Emirates	323	20	6	6	32	3	0.0	-90.1
Yemen	184	200	6	3	209	37	0.0	13.6
Other Middle East	59	9	3	5	17	5	0.0	-71.2

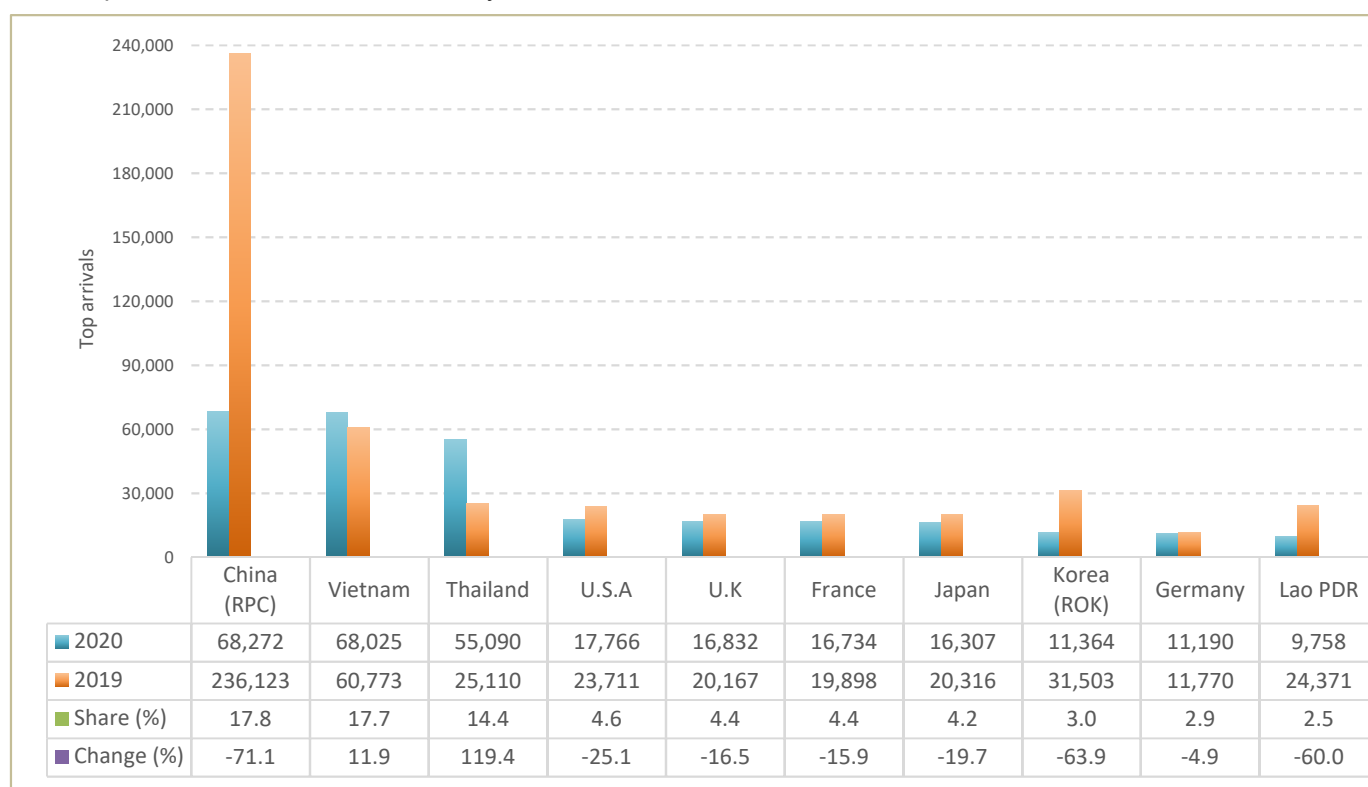
CAMBODIA: TOURISM STATISTICS REPORT IN FEBRUARY 2020

I. INBOUND TOURISM

1. International tourist arrivals in February 2020

	Inbound tourism			Share (%) 2020*	Change (%)	
	2018	2019	2020		19/18	2020*/19
Air	373,963	439,273	210,451	54.8	17.5	-52.1
Phnom Penh Int'l Airport (PNH)	152,132	194,439	117,605	30.6	27.8	-39.5
Siem Reap Int'l Airport (REP)	211,920	197,172	74,961	19.5	-7.0	-62.0
Kong Keng (KOS)	9,911	47,662	17,885	4.7	380.9	-62.5
Land and Waterways	168,974	158,210	173,412	45.2	-6.4	9.6
Land	149,717	136,654	154,281	40.2	-8.7	12.9
Waterways	19,257	21,556	19,131	5.0	11.9	-11.2
Total	542,937	597,483	383,863	100.0	10.0	-35.8

2. Top ten markets arrivals in February 2020



II. OUTBOUND TOURISM

Outbound tourism in February 2020

	Outbound tourism			Change (%)	
	2018	2019	2020	19/18	2020*/19
Cambodian Outbound Tourists	142,332	146,448	106,132	2.9	-27.5
International Tourists Departure	551,588	527,257	352,801	-4.4	-33.1

III. INTERNAL TOURISM

Domestic and foreign visitors' arrivals to the regions in February 2020

	Feb 2019		Feb 2020		Change 2020*/19 (%)	
	KHM	FOR	KHM	FOR	KHM	FOR
Phnom Penh	205,947	324,224	209,249	264,930	1.6	-18.3
Siem Reap Angkor	132,931	273,259	50,214	118,933	-62.2	-56.5
Coastal Zone	451,747	113,246	392,888	96,039	-13.0	-15.2
Preah Sihanouk	172,009	65,891	93,000	58,800	-45.9	-10.8
Eco-tourism Zone	50,456	10,092	42,066	9,355	-16.6	-7.3
Total	841,081	720,821	694,417	489,257	-17.4	-32.1

Note:

KHM: Cambodia visitors

FOR: Foreign visitors

Source: Tourism Statistics Department, MOT.

International Tourist Arrivals to Cambodia by Country of Residence in February 2020

(by all means of transportation)

Regions Country of Residence	2019		2020			Total	Female	Share 2020* (%)	Change 2020*/19 (%)
	Purposes of Visit			Total	Female				
	Holiday	Business	Others						
Grand Total	597,483	298,603	67,717	17,543	383,863	156,782	100.0	-35.8	
Asia and the Pacific	462,039	193,349	63,846	11,787	268,982	100,797	70.1	-41.8	
ASEAN (Southeast Asia)	143,804	131,137	13,282	9,431	153,850	65,578	40.1	7.0	
Brunei Darussalam	69	36	3	1	40	14	0.0	-42.0	
Indonesia	5,295	1,767	3,124	32	4,923	1,309	1.3	-7.0	
Lao PDR	24,371	9,520	67	171	9,758	5,943	2.5	-60.0	
Malaysia	14,514	5,691	2,196	92	7,979	2,296	2.1	-45.0	
Myanmar	1,858	438	147	44	629	303	0.2	-66.1	
Philippines	6,745	3,735	705	42	4,482	3,064	1.2	-33.6	
Singapore	5,028	2,432	436	49	2,917	738	0.8	-42.0	
Thailand	25,110	50,263	3,214	1,613	55,090	22,609	14.4	119.4	
Timor Leste	41	2	4	1	7	3	0.0	-82.9	
Vietnam	60,773	57,253	3,386	7,386	68,025	29,299	17.7	11.9	
Northeast Asia	301,007	52,042	49,141	1,383	102,566	30,947	26.7	-65.9	
China	236,123	24,456	43,240	576	68,272	16,622	17.8	-71.1	
Hong Kong (China)	248	24	3	29	56	26	0.0	-77.4	
Japan	20,316	13,810	2,266	231	16,307	7,119	4.2	-19.7	
Korea (ROK)	31,503	9,502	1,511	351	11,364	4,473	3.0	-63.9	
Macau (China)	22	2	1	2	5	2	0.0	-77.3	
Mongolia	131	78	7	3	88	46	0.0	-32.8	
Taiwan (China)	12,664	4,170	2,113	191	6,474	2,659	1.7	-48.9	
Southern Asia	6,261	4,503	914	66	5,483	1,203	1.4	-12.4	
Afghanistan	21	9	3	7	19	1	0.0	-9.5	
Bangladesh	418	369	200	6	575	40	0.1	37.6	
Bhutan	17	3	1	1	5	1	0.0	-70.6	
India	4,730	3,401	546	25	3,972	962	1.0	-16.0	
Iran	93	93	5	2	100	46	0.0	7.5	
Nepal	304	177	44	9	230	61	0.1	-24.3	
Pakistan	375	330	49	5	384	54	0.1	2.4	
Sri Lanka	303	121	66	11	198	38	0.1	-34.7	
Oceania	10,714	5,639	507	902	7,048	3,057	1.8	-34.2	
Australia	9,042	4,953	436	694	6,083	2,637	1.6	-32.7	
Fiji	27	8	5	1	14	6	0.0	-48.1	
New Zealand	1,645	678	66	207	951	414	0.2	-42.2	
Other Asia & the Pacific	253	28	2	5	35	12	0.0	-86.2	
Europe	98,439	81,606	2,569	2,371	86,546	42,530	22.5	-12.1	
Northern Europe	27,837	22,524	720	318	23,562	11,126	6.1	-15.4	
Denmark	1,964	1,782	29	23	1,834	948	0.5	-6.6	
Finland	994	799	32	11	842	369	0.2	-15.3	
Iceland	136	62	1	1	64	35	0.0	-52.9	
Ireland	1,100	811	37	22	870	385	0.2	-20.9	
Norway	1,274	1,187	27	17	1,231	637	0.3	-3.4	
Sweden	2,202	1,780	74	35	1,889	833	0.5	-14.2	
United Kingdom	20,167	16,103	520	209	16,832	7,919	4.4	-16.5	
Western Europe	41,161	32,776	1,244	1,897	35,917	17,118	9.4	-12.7	
Austria	1,751	1,594	33	31	1,658	775	0.4	-5.3	
Belgium	2,007	1,541	83	43	1,667	777	0.4	-16.9	
France	19,898	14,604	696	1,434	16,734	8,200	4.4	-15.9	
Germany	11,770	10,790	248	152	11,190	5,214	2.9	-4.9	
Luxembourg	84	79	5	3	87	42	0.0	3.6	
Monaco	6	5	1	1	7	4	0.0	16.7	
Netherlands	3,160	2,155	98	136	2,389	1,092	0.6	-24.4	
Switzerland	2,485	2,008	80	97	2,185	1,014	0.6	-12.1	
Central / Eastern Europe	16,824	15,985	341	62	16,388	8,986	4.3	-2.6	
Bulgaria	469	376	11	2	389	205	0.1	-17.1	
Czech Republic	1,262	916	15	2	933	444	0.2	-26.1	
Estonia	227	213	3	1	217	108	0.1	-4.4	
Hungary	1,062	1,238	16	4	1,258	657	0.3	18.5	
Kazakhstan	332	195	25	1	221	138	0.1	-33.4	
Kyrgyzstan	46	15	9	2	26	18	0.0	-43.5	
Latvia	112	131	1	1	133	70	0.0	18.8	
Lithuania	359	339	3	1	343	184	0.1	-4.5	
Poland	2,978	3,050	32	6	3,088	1,616	0.8	3.7	
Romania	440	363	9	11	383	213	0.1	-13.0	
Russian Federation	7,802	7,672	139	27	7,838	4,486	2.0	0.5	
Slovakia	425	468	5	2	475	224	0.1	11.8	
Ukraine	1,230	947	60	1	1,008	593	0.3	-18.0	
Uzbekistan	80	62	13	1	76	30	0.0	-5.0	

International Tourist Arrivals to Cambodia by Country of Residence in February 2020

(by all means of transportation)

Regions Country of Residence	2019	2020			Total	Female	Share 2020* (%)	Change 2020*/19 (%)
		Purposes of Visit						
		Holiday	Business	Others				
Grand Total	597,483	298,603	67,717	17,543	383,863	156,782	100.0	-35.8
Southern Europe	9,569	7,757	209	50	8,016	4,057	2.1	-16.2
Croatia	241	158	6	2	166	98	0.0	-31.1
Greece	194	230	5	1	236	98	0.1	21.6
Italy	5,365	4,103	104	18	4,225	2,135	1.1	-21.2
Malta	59	64	1	4	69	29	0.0	16.9
Portugal	849	627	16	7	650	320	0.2	-23.4
Serbia	204	205	4	1	210	111	0.1	2.9
Slovenia	310	181	19	1	201	95	0.1	-35.2
Spain	2,347	2,189	54	16	2,259	1,171	0.6	-3.7
East Mediterranean Europe	2,913	2,553	53	42	2,648	1,236	0.7	-9.1
Israel	2,217	1,853	24	6	1,883	904	0.5	-15.1
Turkey	696	700	29	36	765	332	0.2	9.9
Other Europe	135	11	2	2	15	7	0.0	-88.9
Americas	35,598	22,667	1,126	3,347	27,140	13,024	7.1	-23.8
North America	31,449	19,316	1,069	3,309	23,694	11,063	6.2	-24.7
Canada	7,216	4,702	191	622	5,515	2,555	1.4	-23.6
Mexico	522	391	14	8	413	232	0.1	-20.9
United States of America	23,711	14,223	864	2,679	17,766	8,276	4.6	-25.1
Central America	89	38	3	3	44	15	0.0	-50.6
Costa Rica	59	31	1	1	33	12	0.0	-44.1
Honduras	14	3	1	1	5	1	0.0	-64.3
Jamaica	16	4	1	1	6	2	0.0	-62.5
South America	4,000	3,306	53	34	3,393	1,944	0.9	-15.2
Argentina	889	818	6	2	826	449	0.2	-7.1
Brazil	1,246	1,290	22	16	1,328	758	0.3	6.6
Chile	1,167	735	7	3	745	431	0.2	-36.2
Colombia	269	222	6	4	232	140	0.1	-13.8
Ecuador	62	35	2	5	42	19	0.0	-32.3
Peru	137	124	2	2	128	100	0.0	-6.6
Uruguay	189	53	1	1	55	31	0.0	-70.9
Venezuela	41	29	7	1	37	16	0.0	-9.8
Other America	60	7	1	1	9	2	0.0	-85.0
Africa	983	678	147	25	850	375	0.2	-13.5
North Africa	158	130	7	3	140	56	0.0	-11.4
Morocco	90	90	1	1	92	33	0.0	2.2
Sudan	18	6	1	1	8	2	0.0	-55.6
Tunisia	50	34	5	1	40	21	0.0	-20.0
Subsaharan Africa	805	545	139	21	705	318	0.2	-12.4
Cameroon	18	26	3	1	30	5	0.0	66.7
Congo	28	5	1	1	7	2	0.0	-75.0
Ghana	43	12	4	1	17	5	0.0	-60.5
Kenya	33	40	1	7	48	29	0.0	45.5
Liberia	32	31	1	2	34	7	0.0	6.3
Nigeria	69	23	38	2	63	7	0.0	-8.7
South Africa	536	366	87	4	457	237	0.1	-14.7
Tanzania	9	13	2	1	16	6	0.0	77.8
Uganda	25	19	1	1	21	12	0.0	-16.0
Zimbabwe	12	10	1	1	12	8	0.0	0.0
Other Africa	20	3	1	1	5	1	0.0	-75.0
Middle East	424	303	29	13	345	56	0.1	-18.6
Egypt	61	68	9	2	79	14	0.0	29.5
Iraq	24	24	2	1	27	2	0.0	12.5
Jordan	65	45	4	1	50	5	0.0	-23.1
Kuwait	40	18	2	1	21	2	0.0	-47.5
Oman	19	18	1	1	20	1	0.0	5.3
Palestine	8	9	1	1	11	4	0.0	37.5
Qatar	7	4	1	1	6	1	0.0	-14.3
Saudi Arabia	36	9	1	1	11	1	0.0	-69.4
Syria	37	28	1	1	30	4	0.0	-18.9
United Arab Emirates	25	7	3	1	11	2	0.0	-56.0
Yemen	88	71	3	1	75	19	0.0	-14.8
Other Middle East	14	2	1	1	4	1	0.0	-71.4