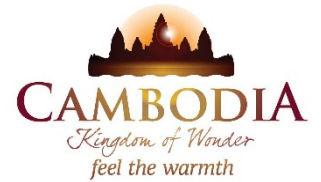




KINGDOM OF CAMBODIA  
NATION RELIGION KING



# TOURISM STATISTICS REPORT

# March 2020

**MINISTRY OF TOURISM**  
NATIONAL INSTITUTE OF TOURISM  
TOURISM STATISTICS DEPARTMENT  
No. A3, Street 169, Sangkat Veal Vong, Khan 7 Makara, Phnom Penh, Cambodia.  
Fax: +855 23 885003  
E-mail: [kong@tourism.gov.kh](mailto:kong@tourism.gov.kh)  
Website: [www.tourism.gov.kh](http://www.tourism.gov.kh)

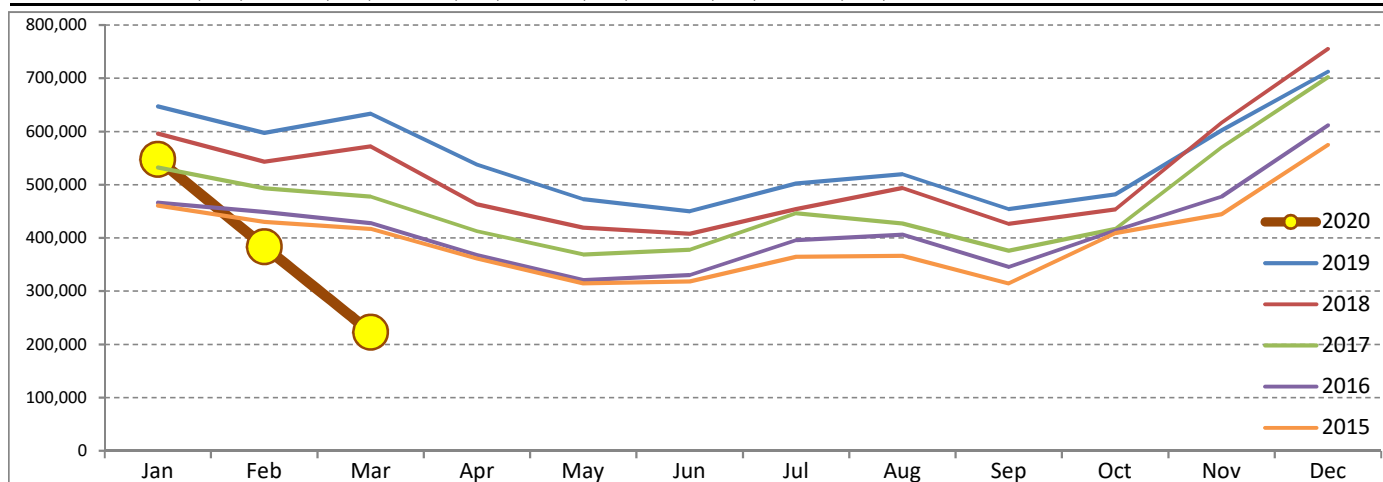
# Tourism Highlights

## Int'l Tourist Arrivals, Average Length of Stays, Hotel Occupancy & Int'l Tourism Receipts 1993 - 2019

Years	Int'l Tourist Arrivals		Average Length of Stays (Days)	Hotel Occupancy (%)	Int'l Tourism Receipts (Million US\$)
	Number	Change (%)			
1993	118,183	-	N/A	N/A	N/A
1994	176,617	49.4	N/A	N/A	N/A
1995	219,680	24.4	8.0	37.0	100
1996	260,489	18.6	7.5	40.0	118
1997	218,843	-16.0	6.4	30.0	103
1998	286,524	30.9	5.2	40.0	166
1999	367,743	28.3	5.5	44.0	190
2000	466,365	26.8	5.5	45.0	228
2001	604,919	29.7	5.5	48.0	304
2002	786,524	30.0	5.8	50.0	379
2003	701,014	-10.9	5.5	50.0	347
2004	1,055,202	50.5	6.3	52.0	578
2005	1,421,615	34.7	6.3	52.0	832
2006	1,700,041	19.6	6.5	54.8	1,049
2007	2,015,128	18.5	6.5	54.8	1,400
2008	2,125,465	5.5	6.7	62.7	1,595
2009	2,161,577	1.7	6.5	63.6	1,561
2010	2,508,289	16.0	6.5	65.7	1,786
2011	2,881,862	14.9	6.5	66.2	1,912
2012	3,584,307	24.4	6.3	68.5	2,210
2013	4,210,165	17.5	6.8	69.5	2,547
2014	4,502,775	7.0	6.5	67.6	2,736
2015	4,775,231	6.1	6.8	70.2	3,012
2016	5,011,712	5.0	6.3	68.9	3,212
2017	5,602,157	11.8	6.6	71.3	3,638
2018	6,201,077	10.7	7.0	72.2	4,375
2019	6,610,592	6.6	6.2	63.5	4,919

## International Tourist Arrivals to Cambodia

Months	2015	2016	2017	2018	2019	2020	Change (%)				
							16/15	17/16	18/17	19/18	2020*/19
<b>Q1</b>	<b>1,307,836</b>	<b>1,342,477</b>	<b>1,502,896</b>	<b>1,711,253</b>	<b>1,877,853</b>	<b>1,155,226</b>	<b>2.6</b>	<b>11.9</b>	<b>13.9</b>	<b>9.7</b>	<b>-38.5</b>
Jan	460,577	466,086	532,206	596,241	647,206	547,963	1.2	14.2	12.0	8.5	-15.3
Feb	430,207	448,468	493,316	542,937	597,483	383,863	4.2	10.0	10.1	10.0	-35.8
Mar	417,052	427,923	477,374	572,075	633,164	223,400	2.6	11.6	19.8	10.7	-64.7
<b>Q2</b>	<b>994,154</b>	<b>1,018,455</b>	<b>1,159,783</b>	<b>1,290,407</b>	<b>1,460,621</b>	<b>0</b>	<b>2.4</b>	<b>13.9</b>	<b>11.3</b>	<b>13.2</b>	
Apr	361,139	367,684	412,925	463,423	537,656		1.8	12.3	12.2	16.0	
May	314,748	320,601	368,809	419,171	472,952		1.9	15.0	13.7	12.8	
Jun	318,267	330,170	378,049	407,813	450,013		3.7	14.5	7.9	10.3	
<b>Q3</b>	<b>1,044,880</b>	<b>1,147,483</b>	<b>1,250,082</b>	<b>1,374,373</b>	<b>1,475,832</b>	<b>0</b>	<b>9.8</b>	<b>8.9</b>	<b>9.9</b>	<b>7.4</b>	
Jul	364,325	395,761	446,627	454,056	502,421		8.6	12.9	1.7	10.7	
Aug	366,096	406,214	427,224	494,043	519,502		11.0	5.2	15.6	5.2	
Sep	314,459	345,508	376,231	426,274	453,909		9.9	8.9	13.3	6.5	
<b>Q4</b>	<b>1,428,361</b>	<b>1,503,297</b>	<b>1,689,396</b>	<b>1,825,044</b>	<b>1,796,286</b>	<b>0</b>	<b>5.2</b>	<b>12.4</b>	<b>8.0</b>	<b>-1.6</b>	
Oct	408,922	414,077	417,039	453,370	481,782		1.3	0.7	8.7	6.3	
Nov	444,640	477,686	570,471	616,549	602,042		7.4	19.4	8.1	-2.4	
Dec	574,799	611,534	701,886	755,125	712,462		6.4	14.8	7.6	-5.6	
<b>Total</b>	<b>4,775,231</b>	<b>5,011,712</b>	<b>5,602,157</b>	<b>6,201,077</b>	<b>6,610,592</b>	<b>1,155,226</b>	<b>5.0</b>	<b>11.8</b>	<b>10.7</b>	<b>6.6</b>	<b>-38.5</b>



Source: Tourism Statistics Department, MOT

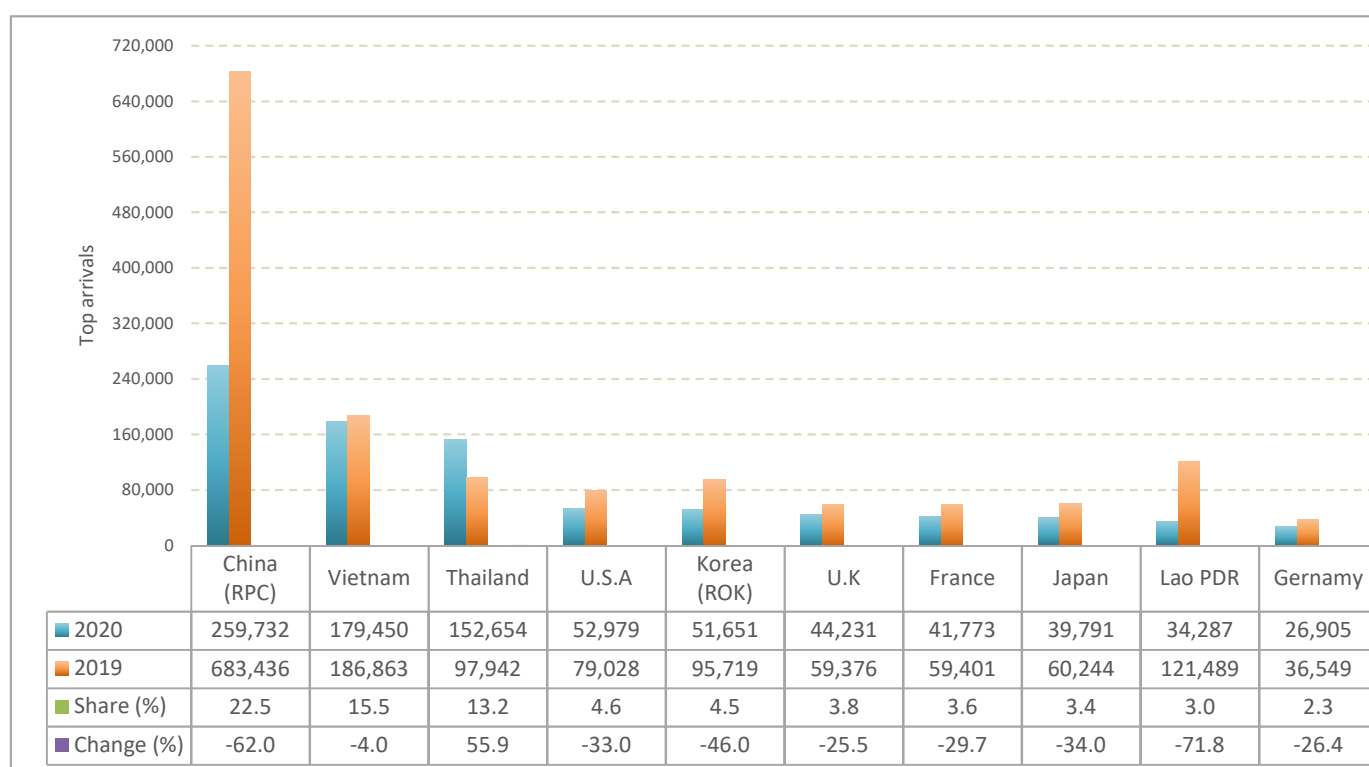
# CAMBODIA: TOURISM STATISTICS REPORT IN THE FIRST QUARTER 2020

## I. INBOUND TOURISM

### 1. International tourist arrivals in January - March 2020

	Inbound tourism			Share (%) 2020*	Change (%)	
	2018	2019	2020		19/18	2020*/19
<b>Air</b>	<b>1,157,632</b>	<b>1,299,122</b>	<b>663,641</b>	<b>57.4</b>	<b>12.2</b>	<b>-48.9</b>
Phnom Penh Int'l Airport (PNH)	495,215	581,709	365,315	31.6	17.5	-37.2
Siem Reap Int'l Airport (REP)	631,444	583,879	240,785	20.8	-7.5	-58.8
Kong Keng (KOS)	30,973	133,534	57,541	5.0	331.1	-56.9
<b>Land and Waterways</b>	<b>553,621</b>	<b>578,731</b>	<b>491,585</b>	<b>42.6</b>	<b>4.5</b>	<b>-15.1</b>
Land	498,016	512,309	440,096	38.1	2.9	-14.1
Waterways	55,605	66,422	51,489	4.5	19.5	-22.5
<b>Total</b>	<b>1,711,253</b>	<b>1,877,853</b>	<b>1,155,226</b>	<b>100.0</b>	<b>9.7</b>	<b>-38.5</b>

### 2. Top ten markets arrivals in January - March 2020



## II. OUTBOUND TOURISM

### Outbound tourism in January - March 2020

	Outbound tourism			Change (%)	
	2018	2019	2020	19/18	2020*/19
Cambodian Outbound Tourists	439,905	456,876	308,350	3.9	-32.5
International Tourists Departure	1,628,923	1,697,629	1,193,072	4.2	-29.7

## III. INTERNAL TOURISM

### Domestic and foreign visitors' arrivals to the regions in January - March 2020

	Jan - Mar 2019		Jan - Mar 2020		Change 2020*/19 (%)	
	KHM	FOR	KHM	FOR	KHM	FOR
Phnom Penh	609,318	1,089,953	592,379	771,563	-2.8	-29.2
Siem Reap Angkor	380,166	787,900	215,371	383,663	-43.3	-51.3
Coastal Zone	1,106,512	297,944	1,010,579	270,030	-8.7	-9.4
Preah Sihanouk	464,073	197,555	244,269	161,750	-47.4	-18.1
Eco-tourism Zone	128,649	25,981	162,023	20,547	25.9	-20.9
<b>Total</b>	<b>2,224,645</b>	<b>2,201,778</b>	<b>1,980,352</b>	<b>1,445,803</b>	<b>-11.0</b>	<b>-34.3</b>

#### Note:

KHM: Cambodia visitors

FOR: Foreign visitors

Source: Tourism Statistics Department, MOT.

## International Tourist Arrivals to Cambodia by Country of Residence in January - March 2020

(by all means of transportation)

Regions Country of Residence	2019		2020				Share 2020*	Change 2020*/19
			Purposes of Visit			Total		
			Holiday	Business	Others		Female	(%)
<b>Grand Total</b>	<b>1,877,853</b>	<b>918,909</b>	<b>186,696</b>	<b>49,621</b>	<b>1,155,226</b>	<b>486,840</b>	<b>100.0</b>	<b>-38.5</b>
<b>Asia and the Pacific</b>	<b>1,461,738</b>	<b>643,727</b>	<b>174,370</b>	<b>31,858</b>	<b>849,955</b>	<b>341,565</b>	<b>73.6</b>	<b>-41.9</b>
<b>ASEAN (Southeast Asia)</b>	<b>517,727</b>	<b>374,031</b>	<b>36,589</b>	<b>21,702</b>	<b>432,322</b>	<b>186,805</b>	<b>37.4</b>	<b>-16.5</b>
Brunei Darussalam	440	130	7	7	144	39	0.0	-67.3
Indonesia	15,411	5,544	7,325	348	13,217	3,717	1.1	-14.2
Lao PDR	121,489	32,191	279	1,817	34,287	17,992	3.0	-71.8
Malaysia	48,704	18,430	5,334	1,132	24,896	7,044	2.2	-48.9
Myanmar	6,071	1,720	840	384	2,944	1,095	0.3	-51.5
Philippines	21,421	10,536	2,892	877	14,305	8,684	1.2	-33.2
Singapore	19,319	8,630	1,269	506	10,405	2,710	0.9	-46.1
Thailand	97,942	135,938	9,556	7,160	152,654	60,832	13.2	55.9
Timor Leste	67	8	7	5	20	9	0.0	-70.1
Vietnam	186,863	160,904	9,080	9,466	179,450	84,683	15.5	-4.0
<b>Northeast Asia</b>	<b>879,732</b>	<b>233,352</b>	<b>133,584</b>	<b>5,428</b>	<b>372,364</b>	<b>138,153</b>	<b>32.2</b>	<b>-57.7</b>
China	683,436	140,509	117,090	2,133	259,732	91,209	22.5	-62.0
Hong Kong (China)	979	213	16	42	271	119	0.0	-72.3
Japan	60,244	32,547	6,157	1,087	39,791	16,108	3.4	-34.0
Korea (ROK)	95,719	45,933	4,348	1,370	51,651	22,356	4.5	-46.0
Macau (China)	88	18	4	8	30	10	0.0	-65.9
Mongolia	497	253	15	14	282	139	0.0	-43.3
Taiwan (China)	38,769	13,879	5,954	774	20,607	8,212	1.8	-46.8
<b>Southern Asia</b>	<b>21,540</b>	<b>14,436</b>	<b>2,469</b>	<b>241</b>	<b>17,146</b>	<b>4,131</b>	<b>1.5</b>	<b>-20.4</b>
Afghanistan	96	30	6	11	47	5	0.0	-51.0
Bangladesh	1,318	1,046	526	37	1,609	138	0.1	22.1
Bhutan	102	30	6	6	42	18	0.0	-58.8
India	16,587	11,159	1,411	105	12,675	3,417	1.1	-23.6
Iran	387	248	13	15	276	99	0.0	-28.7
Nepal	984	506	141	26	673	170	0.1	-31.6
Pakistan	1,119	911	170	18	1,099	148	0.1	-1.8
Sri Lanka	947	506	196	23	725	136	0.1	-23.4
<b>Oceania</b>	<b>41,701</b>	<b>21,667</b>	<b>1,603</b>	<b>4,371</b>	<b>27,641</b>	<b>12,292</b>	<b>2.4</b>	<b>-33.7</b>
Australia	35,369	18,690	1,362	3,178	23,230	10,398	2.0	-34.3
Fiji	120	43	16	14	73	19	0.0	-39.2
New Zealand	6,212	2,934	225	1,179	4,338	1,875	0.4	-30.2
Other Asia & the Pacific	1,038	241	125	116	482	184	0.0	-53.6
<b>Europe</b>	<b>291,578</b>	<b>206,273</b>	<b>8,172</b>	<b>6,621</b>	<b>221,066</b>	<b>105,272</b>	<b>19.1</b>	<b>-24.2</b>
<b>Northern Europe</b>	<b>80,605</b>	<b>57,669</b>	<b>2,414</b>	<b>756</b>	<b>60,839</b>	<b>27,796</b>	<b>5.3</b>	<b>-24.5</b>
Denmark	5,328	4,157	104	48	4,309	2,179	0.4	-19.1
Finland	2,626	1,961	83	30	2,074	849	0.2	-21.0
Iceland	384	208	5	11	224	116	0.0	-41.7
Ireland	3,196	2,398	136	45	2,579	1,096	0.2	-19.3
Norway	3,359	2,668	67	37	2,772	1,409	0.2	-17.5
Sweden	6,336	4,384	167	99	4,650	1,986	0.4	-26.6
United Kingdom	59,376	41,893	1,852	486	44,231	20,161	3.8	-25.5
<b>Western Europe</b>	<b>123,265</b>	<b>79,450</b>	<b>3,853</b>	<b>5,151</b>	<b>88,454</b>	<b>40,400</b>	<b>7.7</b>	<b>-28.2</b>
Austria	4,580	3,360	77	64	3,501	1,605	0.3	-23.6
Belgium	6,161	3,785	248	137	4,170	1,885	0.4	-32.3
France	59,401	35,480	2,245	4,048	41,773	19,574	3.6	-29.7
Germany	36,549	25,767	697	441	26,905	11,872	2.3	-26.4
Luxembourg	226	164	12	8	184	76	0.0	-18.6
Monaco	26	18	4	5	27	12	0.0	3.8
Netherlands	9,281	5,824	354	220	6,398	2,901	0.6	-31.1
Switzerland	7,041	5,052	216	228	5,496	2,475	0.5	-21.9
<b>Central / Eastern Europe</b>	<b>50,146</b>	<b>42,472</b>	<b>1,075</b>	<b>232</b>	<b>43,779</b>	<b>23,439</b>	<b>3.8</b>	<b>-12.7</b>
Bulgaria	1,423	882	34	10	926	492	0.1	-34.9
Czech Republic	3,110	2,253	45	21	2,319	1,074	0.2	-25.4
Estonia	608	510	10	9	529	253	0.0	-13.0
Hungary	3,175	2,723	33	17	2,773	1,437	0.2	-12.7
Kazakhstan	922	520	84	15	619	373	0.1	-32.9
Kyrgyzstan	135	116	15	9	140	80	0.0	3.7
Latvia	376	348	15	5	368	184	0.0	-2.1
Lithuania	1,081	909	23	7	939	499	0.1	-13.1
Poland	8,449	7,441	100	19	7,560	3,900	0.7	-10.5
Romania	1,537	1,272	28	17	1,317	718	0.1	-14.3
Russian Federation	24,302	21,246	453	65	21,764	11,958	1.9	-10.4
Slovakia	1,301	1,104	23	13	1,140	547	0.1	-12.4
Ukraine	3,501	2,924	171	17	3,112	1,796	0.3	-11.1
Uzbekistan	226	224	41	8	273	128	0.0	20.8

## International Tourist Arrivals to Cambodia by Country of Residence in January - March 2020

(by all means of transportation)

Regions Country of Residence	2019	2020					Share 2020* (%)	Change 2020*/19 (%)
		Purposes of Visit			Total			
		Holiday	Business	Others	Total	Female		
<b>Grand Total</b>	<b>1,877,853</b>	<b>918,909</b>	<b>186,696</b>	<b>49,621</b>	<b>1,155,226</b>	<b>486,840</b>	<b>100.0</b>	<b>-38.5</b>
<b>Southern Europe</b>	<b>27,822</b>	<b>19,829</b>	<b>631</b>	<b>204</b>	<b>20,664</b>	<b>10,066</b>	<b>1.8</b>	<b>-25.7</b>
Croatia	740	521	14	19	554	271	0.0	-25.1
Greece	645	533	16	9	558	242	0.0	-13.5
Italy	15,227	10,592	289	73	10,954	5,309	0.9	-28.1
Malta	164	115	3	7	125	51	0.0	-23.8
Portugal	2,365	1,683	38	14	1,735	877	0.2	-26.6
Serbia	587	500	7	5	512	282	0.0	-12.8
Slovenia	700	403	95	23	521	193	0.0	-25.6
Spain	7,394	5,482	169	54	5,705	2,841	0.5	-22.8
<b>East Mediterranean Europe</b>	<b>9,252</b>	<b>6,712</b>	<b>151</b>	<b>230</b>	<b>7,093</b>	<b>3,476</b>	<b>0.6</b>	<b>-23.3</b>
Israel	6,913	4,685	66	44	4,795	2,316	0.4	-30.6
Turkey	2,339	2,027	85	186	2,298	1,160	0.2	-1.8
Other Europe	488	141	48	48	237	95	0.0	-51.4
<b>Americas</b>	<b>118,862</b>	<b>65,368</b>	<b>3,590</b>	<b>10,928</b>	<b>79,886</b>	<b>38,339</b>	<b>6.9</b>	<b>-32.8</b>
<b>North America</b>	<b>105,438</b>	<b>55,554</b>	<b>3,378</b>	<b>10,724</b>	<b>69,656</b>	<b>32,716</b>	<b>6.0</b>	<b>-33.9</b>
Canada	24,027	12,517	759	1,864	15,140	6,986	1.3	-37.0
Mexico	2,383	1,449	51	37	1,537	794	0.1	-35.5
United States of America	79,028	41,588	2,568	8,823	52,979	24,936	4.6	-33.0
<b>Central America</b>	<b>367</b>	<b>178</b>	<b>23</b>	<b>21</b>	<b>222</b>	<b>93</b>	<b>0.0</b>	<b>-39.5</b>
Costa Rica	254	130	7	8	145	56	0.0	-42.9
Honduras	58	25	9	7	41	11	0.0	-29.3
Jamaica	55	23	7	6	36	26	0.0	-34.5
<b>South America</b>	<b>12,812</b>	<b>9,548</b>	<b>174</b>	<b>154</b>	<b>9,876</b>	<b>5,480</b>	<b>0.9</b>	<b>-22.9</b>
Argentina	2,935	2,578	20	22	2,620	1,410	0.2	-10.7
Brazil	4,325	3,826	56	43	3,925	2,182	0.3	-9.2
Chile	2,454	1,518	31	15	1,564	878	0.1	-36.3
Colombia	1,153	857	29	24	910	495	0.1	-21.1
Ecuador	217	95	11	18	124	56	0.0	-42.9
Peru	508	324	8	12	344	262	0.0	-32.3
Uruguay	1,073	258	4	8	270	147	0.0	-74.8
Venezuela	147	92	15	12	119	50	0.0	-19.0
Other America	245	88	15	29	132	50	0.0	-46.1
<b>Africa</b>	<b>3,897</b>	<b>2,521</b>	<b>461</b>	<b>131</b>	<b>3,113</b>	<b>1,465</b>	<b>0.3</b>	<b>-20.1</b>
<b>North Africa</b>	<b>849</b>	<b>425</b>	<b>27</b>	<b>21</b>	<b>473</b>	<b>187</b>	<b>0.0</b>	<b>-44.3</b>
Morocco	267	290	10	8	308	120	0.0	15.4
Sudan	54	26	4	9	39	9	0.0	-27.8
Tunisia	528	109	13	4	126	58	0.0	-76.1
<b>Subsaharan Africa</b>	<b>2,948</b>	<b>2,078</b>	<b>426</b>	<b>99</b>	<b>2,603</b>	<b>1,265</b>	<b>0.2</b>	<b>-11.7</b>
Cameroon	86	64	10	7	81	16	0.0	-5.8
Congo	68	13	3	4	20	5	0.0	-70.6
Ghana	111	235	8	9	252	108	0.0	127.0
Kenya	118	101	8	14	123	78	0.0	4.2
Liberia	103	83	4	5	92	16	0.0	-10.7
Nigeria	179	68	101	11	180	18	0.0	0.6
South Africa	2,036	1,385	279	30	1,694	923	0.1	-16.8
Tanzania	99	24	5	4	33	13	0.0	-66.7
Uganda	88	59	3	9	71	38	0.0	-19.3
Zimbabwe	60	46	5	6	57	50	0.0	-5.0
Other Africa	100	18	8	11	37	13	0.0	-63.0
<b>Middle East</b>	<b>1,778</b>	<b>1,020</b>	<b>103</b>	<b>83</b>	<b>1,206</b>	<b>199</b>	<b>0.1</b>	<b>-32.2</b>
Egypt	255	246	26	6	278	66	0.0	9.0
Iraq	109	90	11	6	107	10	0.0	-1.8
Jordan	177	125	18	8	151	20	0.0	-14.7
Kuwait	143	56	8	14	78	8	0.0	-45.5
Oman	95	42	3	5	50	5	0.0	-47.4
Palestine	23	26	4	8	38	10	0.0	65.2
Qatar	33	9	3	5	17	3	0.0	-48.5
Saudi Arabia	115	80	4	5	89	8	0.0	-22.6
Syria	177	73	6	5	84	15	0.0	-52.5
United Arab Emirates	352	25	8	7	40	4	0.0	-88.6
Yemen	234	237	7	6	250	43	0.0	6.8
Other Middle East	65	11	5	8	24	7	0.0	-63.1

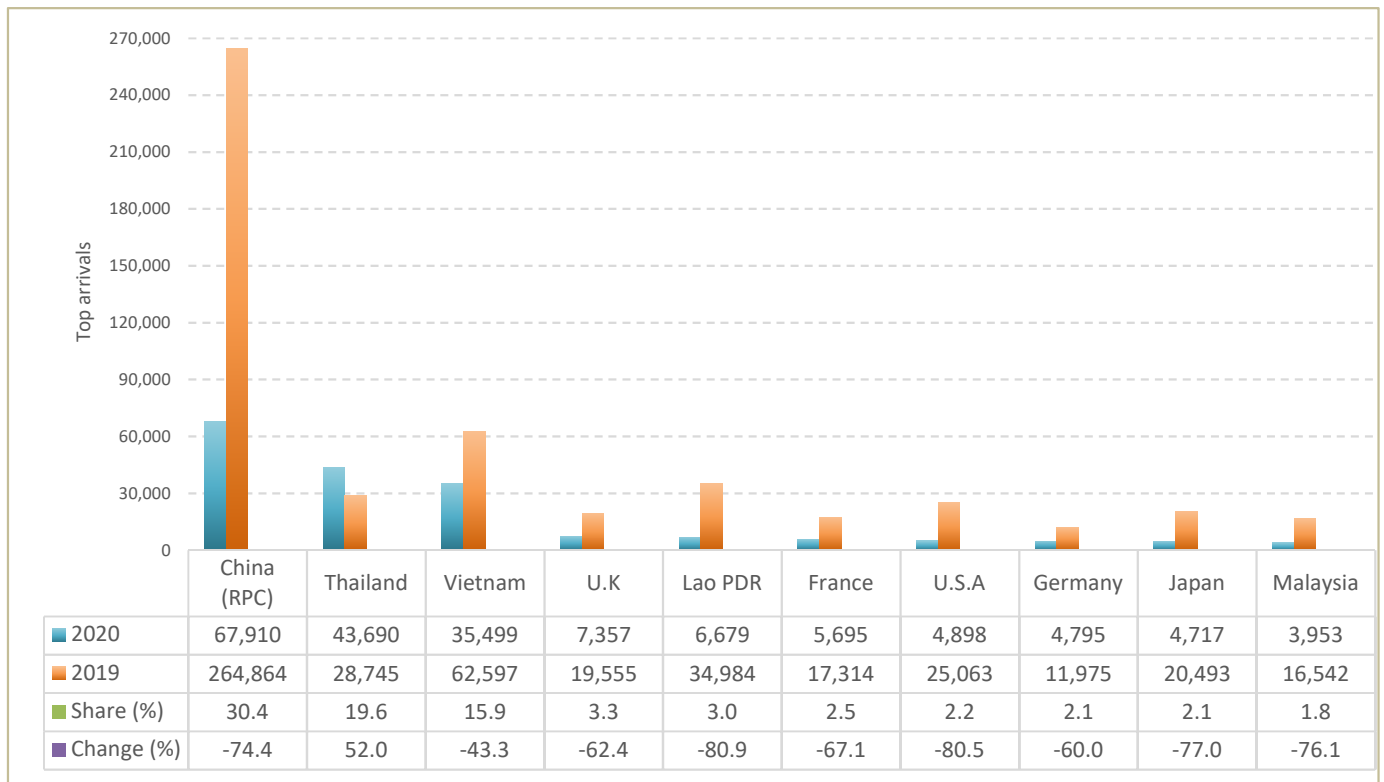
# CAMBODIA: TOURISM STATISTICS REPORT IN MARCH 2020

## I. INBOUND TOURISM

### 1. International tourist arrivals in March 2020

	Inbound tourism			Share (%) 2020*	Change (%)	
	2018	2019	2020		19/18	2020*/19
<b>Air</b>	<b>395,114</b>	<b>456,443</b>	<b>121,056</b>	<b>54.2</b>	<b>15.5</b>	<b>-73.5</b>
Phnom Penh Int'l Airport (PNH)	184,103	214,575	75,762	33.9	16.6	-64.7
Siem Reap Int'l Airport (REP)	199,656	183,437	23,047	10.3	-8.1	-87.4
Kong Keng (KOS)	11,355	58,431	22,247	10.0	414.6	-61.9
<b>Land and Waterways</b>	<b>176,961</b>	<b>176,721</b>	<b>102,344</b>	<b>45.8</b>	<b>-0.1</b>	<b>-42.1</b>
Land	160,334	156,319	96,403	43.2	-2.5	-38.3
Waterways	16,627	20,402	5,941	2.7	22.7	-70.9
<b>Total</b>	<b>572,075</b>	<b>633,164</b>	<b>223,400</b>	<b>100.0</b>	<b>10.7</b>	<b>-64.7</b>

### 2. Top ten markets arrivals in March 2020



## II. OUTBOUND TOURISM

### Outbound tourism in March 2020

	Outbound tourism			Change (%)	
	2018	2019	2020	19/18	2020*/19
Cambodian Outbound Tourists	150,626	156,127	49,813	3.7	-68.1
International Tourists Departure	524,984	559,747	231,867	6.6	-58.6

## III. INTERNAL TOURISM

### Domestic and foreign visitors' arrivals to the regions in March 2020

	Mar 2019		Mar 2020		Change 2020*/19 (%)	
	KHM	FOR	KHM	FOR	KHM	FOR
Phnom Penh	196,761	389,573	182,923	181,231	-7.0	-53.5
Siem Reap Angkor	115,958	243,591	2,800	42,169	-97.6	-82.7
Coastal Zone	249,333	93,510	108,399	51,201	-56.5	-45.2
Preah Sihanouk	167,963	67,450	31,131	32,380	-81.5	-52.0
Eco-tourism Zone	33,048	8,349	31,528	3,646	-4.6	-56.3
<b>Total</b>	<b>595,100</b>	<b>735,023</b>	<b>325,650</b>	<b>278,247</b>	<b>-45.3</b>	<b>-62.1</b>

#### Note:

KHM: Cambodia visitors

FOR: Foreign visitors

Source: Tourism Statistics Department, MOT.

## International Tourist Arrivals to Cambodia by Country of Residence in March 2020

(by all means of transportation)

Regions Country of Residence	2019	2020					Share 2020* (%)	Change 2020*/19 (%)
		Purposes of Visit			Total			
		Holiday	Business	Others	Female			
<b>Grand Total</b>	<b>633,164</b>	<b>156,142</b>	<b>60,054</b>	<b>7,204</b>	<b>223,400</b>	<b>80,892</b>	<b>100.0</b>	<b>-64.7</b>
<b>Asia and the Pacific</b>	<b>506,612</b>	<b>117,866</b>	<b>57,487</b>	<b>5,809</b>	<b>181,162</b>	<b>61,118</b>	<b>81.1</b>	<b>-64.2</b>
<b>ASEAN (Southeast Asia)</b>	<b>164,263</b>	<b>83,937</b>	<b>8,982</b>	<b>4,465</b>	<b>97,384</b>	<b>40,246</b>	<b>43.6</b>	<b>-40.7</b>
Brunei Darussalam	129	7	2	1	10	3	0.0	-92.2
Indonesia	4,988	852	1,503	59	2,414	578	1.1	-51.6
Lao PDR	34,984	6,461	102	116	6,679	3,527	3.0	-80.9
Malaysia	16,542	2,724	1,056	173	3,953	930	1.8	-76.1
Myanmar	2,104	253	485	15	753	352	0.3	-64.2
Philippines	7,252	2,087	440	126	2,653	1,480	1.2	-63.4
Singapore	6,903	1,382	271	76	1,729	375	0.8	-75.0
Thailand	28,745	37,552	2,580	3,558	43,690	16,925	19.6	52.0
Timor Leste	19	2	1	1	4	1	0.0	-78.9
Vietnam	62,597	32,617	2,542	340	35,499	16,075	15.9	-43.3
<b>Northeast Asia</b>	<b>321,833</b>	<b>29,311</b>	<b>47,579</b>	<b>969</b>	<b>77,859</b>	<b>18,937</b>	<b>34.9</b>	<b>-75.8</b>
China	264,864	22,911	44,354	645	67,910	15,888	30.4	-74.4
Hong Kong (China)	207	4	3	2	9	3	0.0	-95.7
Japan	20,493	3,451	1,160	106	4,717	1,727	2.1	-77.0
Korea (ROK)	22,852	2,026	900	155	3,081	783	1.4	-86.5
Macau (China)	36	2	1	1	4	1	0.0	-88.9
Mongolia	128	13	3	1	17	4	0.0	-86.7
Taiwan (China)	13,253	904	1,158	59	2,121	531	0.9	-84.0
<b>Southern Asia</b>	<b>7,438</b>	<b>1,586</b>	<b>504</b>	<b>34</b>	<b>2,124</b>	<b>300</b>	<b>1.0</b>	<b>-71.4</b>
Afghanistan	28	4	1	1	6	1	0.0	-78.6
Bangladesh	494	156	164	3	323	21	0.1	-34.6
Bhutan	26	2	2	1	5	2	0.0	-80.8
India	5,624	1,173	237	15	1,425	228	0.6	-74.7
Iran	202	23	1	2	26	3	0.0	-87.1
Nepal	395	52	32	8	92	19	0.0	-76.7
Pakistan	335	118	36	1	155	17	0.1	-53.7
Sri Lanka	334	58	31	3	92	9	0.0	-72.5
<b>Oceania</b>	<b>12,701</b>	<b>2,927</b>	<b>332</b>	<b>267</b>	<b>3,526</b>	<b>1,531</b>	<b>1.6</b>	<b>-72.2</b>
Australia	10,587	2,560	291	209	3,060	1,313	1.4	-71.1
Fiji	38	4	3	1	8	2	0.0	-78.9
New Zealand	2,076	363	38	57	458	216	0.2	-77.9
Other Asia & the Pacific	377	105	90	74	269	104	0.1	-28.6
<b>Europe</b>	<b>86,897</b>	<b>30,505</b>	<b>1,732</b>	<b>702</b>	<b>32,939</b>	<b>15,707</b>	<b>14.7</b>	<b>-62.1</b>
<b>Northern Europe</b>	<b>25,380</b>	<b>9,257</b>	<b>529</b>	<b>68</b>	<b>9,854</b>	<b>4,471</b>	<b>4.4</b>	<b>-61.2</b>
Denmark	1,498	645	30	2	677	331	0.3	-54.8
Finland	649	292	16	5	313	121	0.1	-51.8
Iceland	97	28	2	2	32	13	0.0	-67.0
Ireland	965	425	31	3	459	179	0.2	-52.4
Norway	925	381	11	5	397	217	0.2	-57.1
Sweden	1,691	583	26	10	619	291	0.3	-63.4
United Kingdom	19,555	6,903	413	41	7,357	3,319	3.3	-62.4
<b>Western Europe</b>	<b>37,051</b>	<b>12,367</b>	<b>796</b>	<b>531</b>	<b>13,694</b>	<b>6,431</b>	<b>6.1</b>	<b>-63.0</b>
Austria	1,263	463	14	6	483	227	0.2	-61.8
Belgium	1,710	658	67	17	742	322	0.3	-56.6
France	17,314	4,853	440	402	5,695	2,674	2.5	-67.1
Germany	11,975	4,599	136	60	4,795	2,311	2.1	-60.0
Luxembourg	64	31	2	1	34	14	0.0	-46.9
Monaco	6	2	1	1	4	2	0.0	-33.3
Netherlands	2,898	1,047	88	21	1,156	533	0.5	-60.1
Switzerland	1,821	714	48	23	785	348	0.4	-56.9
<b>Central / Eastern Europe</b>	<b>13,577</b>	<b>6,383</b>	<b>229</b>	<b>40</b>	<b>6,652</b>	<b>3,552</b>	<b>3.0</b>	<b>-51.0</b>
Bulgaria	656	162	10	3	175	98	0.1	-73.3
Czech Republic	802	385	6	4	395	171	0.2	-50.7
Estonia	151	72	2	1	75	34	0.0	-50.3
Hungary	844	368	3	2	373	201	0.2	-55.8
Kazakhstan	251	50	15	2	67	35	0.0	-73.3
Kyrgyzstan	34	18	2	1	21	9	0.0	-38.2
Latvia	127	54	4	1	59	27	0.0	-53.5
Lithuania	341	169	6	1	176	91	0.1	-48.4
Poland	2,039	821	20	2	843	419	0.4	-58.7
Romania	341	130	3	1	134	72	0.1	-60.7
Russian Federation	6,763	3,547	116	15	3,678	2,055	1.6	-45.6
Slovakia	432	167	7	4	178	80	0.1	-58.8
Ukraine	769	423	31	1	455	251	0.2	-40.8
Uzbekistan	27	17	4	2	23	9	0.0	-14.8

## International Tourist Arrivals to Cambodia by Country of Residence in March 2020

(by all means of transportation)

Regions Country of Residence	2019	2020					Share 2020* (%)	Change 2020*/19 (%)
		Purposes of Visit			Total			
		Holiday	Business	Others	Total	Female		
<b>Grand Total</b>	<b>633,164</b>	<b>156,142</b>	<b>60,054</b>	<b>7,204</b>	<b>223,400</b>	<b>80,892</b>	<b>100.0</b>	<b>-64.7</b>
<b>Southern Europe</b>	<b>7,731</b>	<b>1,982</b>	<b>108</b>	<b>21</b>	<b>2,111</b>	<b>988</b>	<b>0.9</b>	<b>-72.7</b>
Croatia	180	31	1	2	34	11	0.0	-81.1
Greece	188	58	2	1	61	21	0.0	-67.6
Italy	3,836	657	55	10	722	318	0.3	-81.2
Malta	53	17	1	1	19	5	0.0	-64.2
Portugal	732	237	5	2	244	114	0.1	-66.7
Serbia	117	61	1	1	63	39	0.0	-46.2
Slovenia	154	65	4	1	70	33	0.0	-54.5
Spain	2,471	856	39	3	898	447	0.4	-63.7
<b>East Mediterranean Europe</b>	<b>2,980</b>	<b>470</b>	<b>36</b>	<b>14</b>	<b>520</b>	<b>223</b>	<b>0.2</b>	<b>-82.6</b>
Israel	2,230	366	17	3	386	169	0.2	-82.7
Turkey	750	104	19	11	134	54	0.1	-82.1
Other Europe	178	46	34	28	108	42	0.0	-39.3
<b>Americas</b>	<b>38,076</b>	<b>7,255</b>	<b>732</b>	<b>654</b>	<b>8,641</b>	<b>3,827</b>	<b>3.9</b>	<b>-77.3</b>
<b>North America</b>	<b>34,287</b>	<b>5,846</b>	<b>678</b>	<b>623</b>	<b>7,147</b>	<b>3,033</b>	<b>3.2</b>	<b>-79.2</b>
Canada	8,412	1,707	174	112	1,993	865	0.9	-76.3
Mexico	812	241	12	3	256	114	0.1	-68.5
United States of America	25,063	3,898	492	508	4,898	2,054	2.2	-80.5
<b>Central America</b>	<b>124</b>	<b>23</b>	<b>5</b>	<b>3</b>	<b>31</b>	<b>10</b>	<b>0.0</b>	<b>-75.0</b>
Costa Rica	87	15	1	1	17	7	0.0	-80.5
Honduras	23	5	1	1	7	2	0.0	-69.6
Jamaica	14	3	3	1	7	1	0.0	-50.0
<b>South America</b>	<b>3,605</b>	<b>1,368</b>	<b>42</b>	<b>13</b>	<b>1,423</b>	<b>768</b>	<b>0.6</b>	<b>-60.5</b>
Argentina	646	399	3	1	403	209	0.2	-37.6
Brazil	1,184	534	11	5	550	296	0.2	-53.5
Chile	480	165	11	1	177	95	0.1	-63.1
Colombia	288	127	9	1	137	78	0.1	-52.4
Ecuador	80	8	2	1	11	8	0.0	-86.3
Peru	178	62	3	2	67	34	0.0	-62.4
Uruguay	712	64	1	1	66	43	0.0	-90.7
Venezuela	37	9	2	1	12	5	0.0	-67.6
Other America	60	18	7	15	40	16	0.0	-33.3
<b>Africa</b>	<b>1,084</b>	<b>376</b>	<b>85</b>	<b>20</b>	<b>481</b>	<b>212</b>	<b>0.2</b>	<b>-55.6</b>
<b>North Africa</b>	<b>136</b>	<b>72</b>	<b>6</b>	<b>5</b>	<b>83</b>	<b>36</b>	<b>0.0</b>	<b>-39.0</b>
Morocco	82	47	2	3	52	23	0.0	-36.6
Sudan	12	3	1	1	5	2	0.0	-58.3
Tunisia	42	22	3	1	26	11	0.0	-38.1
<b>Subsaharan Africa</b>	<b>934</b>	<b>299</b>	<b>76</b>	<b>11</b>	<b>386</b>	<b>171</b>	<b>0.2</b>	<b>-58.7</b>
Cameroon	32	11	1	1	13	3	0.0	-59.4
Congo	16	2	1	1	4	1	0.0	-75.0
Ghana	32	4	1	1	6	2	0.0	-81.3
Kenya	52	16	3	1	20	13	0.0	-61.5
Liberia	29	11	2	1	14	3	0.0	-51.7
Nigeria	55	15	22	1	38	3	0.0	-30.9
South Africa	598	213	43	2	258	126	0.1	-56.9
Tanzania	65	3	1	1	5	2	0.0	-92.3
Uganda	27	17	1	1	19	12	0.0	-29.6
Zimbabwe	28	7	1	1	9	6	0.0	-67.9
Other Africa	14	5	3	4	12	5	0.0	-14.3
<b>Middle East</b>	<b>495</b>	<b>140</b>	<b>18</b>	<b>19</b>	<b>177</b>	<b>28</b>	<b>0.1</b>	<b>-64.2</b>
Egypt	83	35	3	1	39	2	0.0	-53.0
Iraq	32	10	3	2	15	3	0.0	-53.1
Jordan	58	23	1	2	26	2	0.0	-55.2
Kuwait	60	6	1	1	8	3	0.0	-86.7
Oman	31	2	1	1	4	1	0.0	-87.1
Palestine	9	4	1	1	6	2	0.0	-33.3
Qatar	16	1	1	1	3	1	0.0	-81.3
Saudi Arabia	31	5	1	1	7	2	0.0	-77.4
Syria	90	10	1	2	13	3	0.0	-85.6
United Arab Emirates	29	5	2	1	8	1	0.0	-72.4
Yemen	50	37	1	3	41	6	0.0	-18.0
Other Middle East	6	2	2	3	7	2	0.0	16.7