



MINISTRY OF TOURISM

KINGDOM OF CAMBODIA
NATION RELIGION KING

ANNUAL TOURISM STATISTICS REPORT



The Long-Necked Khmer Lute is Humanity's Intangible Cultural Heritage.

2019



Southeast Asia
feel the warmth

**ANNUAL REPORT
ON
TOURISM STATISTICS 2019**



**TOURISM STATISTICS DEPARTMENT
NATIONAL INSTITUTE OF TOURISM
MINISTRY OF TOURISM**

KINGDOM OF CAMBODIA

MESSAGE

Dr. THONG Khon Minister of Tourism



Dear Readers,

On behalf of the Ministry of Tourism, I have the honor and privilege to convey my heartfelt gratitude to the Royal Government of Cambodia, under the sound and brilliant leadership of **Samdech Akka Moha Sena Padei Techo HUN Sen, Prime Minister of the Kingdom of Cambodia**, who has been paying close attention in leading, supporting, and fostering tourism development by rolling out policies, measures, and strategies to accomplish various achievements, especially the open sky policy and rectangular strategy of the Royal Government. Moreover, I would like to extend my profound appreciation to all visitors, tourists, investors, and all stakeholders who have chosen the Kingdom of Cambodia as the **World Class Cultural and Natural Tourism Destination** which is considered as the **"Green Gold"** by the government. The Royal Government has always been very supportive and strongly encouraged the competitive movement of **"Clean City, Clean Resort, Good Service, Best Hospitality"** along with annual celebration of River and Sea Festivals in order to develop

the areas around the river and coastal as well as raising public awareness to relevant partners about the importance of Cambodia's tourism potential.

Our strategy is to continue developing Cambodia as a clean and green tourist destination with high quality service standards and cordial welcomes based on sustainable development and environmental friendly of Angkor temple, Preah Vihear temple, Som Bor Preykok temple and thousands of temples both tangible and intangible heritage treasures, natural resources, beautiful beaches, dynamic of Mekong river, Khmer culinary arts and the genuine smiles of Cambodian people deserved of the renowned title **"Cambodia - Kingdom of Wonder, Feel the Warmth!"**

In the beginning of 2020, the world's tourism is devastated by the COVID-19 pandemic and Cambodia is no different, our tourism industry contribution to the nation's GDP is at most 13% in previous year. However, we are very optimistic that the world's tourism will recover fast and shows promising growth in many years ahead as part of the recovery process by providing direct jobs to help alleviate poverty and accelerate national economic growth toward responsible, sustainable and inclusive tourism development.

In 2019, Cambodia received 6.6 million international tourists increasing 6.6% compared to 2018 by three main passages such as air accounted for 4.40 million, and land and waterways accounted for 2.21 million arrivals. Based on this report to realize our strategic plan for 2012-2020 to welcome 7 million international arrivals will face some difficulties and challenges due to COVID-19 pandemic. In this tough situation of Covid-19 and the uncertainty of world's economy, the Royal Government has taken measures and several tourism campaigns in response to the circumstances of the tourism hardship in compliance with World Health Organization and Cambodian Ministry of Health.

2021 marks 40 years of active collaboration between ASEAN member states to promote Southeast Asia as a single destination and drive the region's sustainable travel and tourism sector. It is with great pride that we host ASEAN Tourism Forum (ATF) with the theme **"ASEAN - A Community of Peace and Shared Future"**. The ATF 2021 echoes the vision of tourism playing a key role to foster a unified and collaborative ASEAN. Tourism sows the seeds of a shared future of peace that can bring about economic growth, social, cultural development and progress in the region. We are proud to this significant milestone again Phnom Penh Capital City "The Pearl of Asia", **Cambodia - Kingdom of Wonder, Feel the Warmth** from 17th - 23rd January 2021

The Ministry of Tourism, the National Institute of Tourism and the Department of Tourism Statistics have thoroughly collected data and published tourism statistical reports annually to provide pivotal and insightful information related to Cambodia's tourism industry, number of tourists' arrivals, services and other vital information to the public. Along with the commitments of our research team, we have generated invaluable statistics in order to provide fundamental indicators, as well as supportive materials to encourage private sectors and all relevant stakeholders both local and international to invest in Cambodia. Moreover, we have been actively supporting educational reform in Cambodia by bestowing this annual report as a document for research, reference, and study materials for all academic purposes for educators and learners, and researchers. We strongly believe that this annual statistic report 2019 will be a beneficially crucial instrument for all purposes.

I sincerely thank you for your interest and wish you all the four Buddhist gems: longevity, nobility, health and strength.

A handwritten signature in blue ink, appearing to be 'Thong Khon', written over a horizontal line.

Dr. THONG Khon
Minister of Tourism

Disclaimer

All rights are reserved. No part of this publication may be reproduced or transmitted in any form or by any means, electronic or mechanical, photocopying, recording, scanning or any form information storage and retrieval systems without prior permission in writing of authorised personnel from the Department of Statistics and Tourism Information of the Ministry of Tourism.

Limited of liability / Disclaimed of Warranty: While the publisher and author have used their best efforts in preparing this book, they make no representations or warranties with respect to the accuracy or completeness of the contents other this book and specifically disclaim any implied warranties of merchantability or fitness for a particular purpose. No warranty may be created or extended by sales representatives or written sales materials. The publisher is not engaged in rendering professional services, and you should consult with a professional where appropriate. Neither the publisher nor author shall be liable for any loss of profit or other commercial damages, including but not limit to special, incidental, consequential, or other damages.

This publication is intended to provide accurate information, data, statistics as well as materials derived from Information of the Ministry of Tourism was established by the Royal Government of Cambodia. With the commitments of our department, we have collected data of international visitor arrivals from various international border check points in Cambodia.

Particularly, it is nationality recognised that this Annual Statistical Report has been following the Definition of Tourism Statistics which is adopted and approved by Minister of Tourism. Statistical data used was accurate at the time of compilation and printing some changes due to revisions and / or changing collection and weighting techniques may have occurred since then.



General Information



Official Name	Kingdom of Cambodia
Area	181,035 km ²
National Independence Day	09 November, 1953
Population	15,288,489 (Census 2019) Male: 48.52%; Female: 51.47% Exclude Oversea Workers
Annual Population Growth Rate	1.2%
Cambodian Outbound Tourism	2,038,284 (2019)
Density	86
Language	Khmer
Religion	Buddhist 97%
Capital	1 (Phnom Penh)
Provinces	24
Cities	26
Khans	14
Districts	165
Communes	1,646
Sangkats	240
Village	14,073
Country Code	+855
Time	GMT +7 hours

Khmer History

The Mon-Khmer race developed slowly during the first six centuries of the Christian era. Under Indian influence, a powerful maritime empire called “Funan” ruled over all the shores of the Gulf of Siam. Within a short time, this new power known as Chenla absorbed the Funanese Kingdom. In the late 7th century, Chenla broke into two parts: land Chenla (to the north) and water Chenla (to the south along the Gulf of Thailand). Land Chenla was fairly stable during the 8th century, whereas water Chenla was beset by dynastic rivalries.

At the beginning of the 9th century, the kings set up their capital in the present province of Siem Reap. For nearly six centuries, they erected two hundred temples as well as their sanctuaries in the Angkorian area of some 400 square kilometers in the Siem Reap Province.

King Suryavarman II (1113-1150) built the temples such as Angkor Wat, Thommanon, Chau Say Tevoda, Preah Palilay, Preah Pithu, and Banteay Samrè.

Jayavarman VII (1181-1220) was best known for his huge building program. Firstly, he built Ta Prohm (1186) and Preah Khan (1191) to dedicate to his parents. Secondly, he erected Banteay Kdei, Srah Srang, the Terrace of the Leper King, the Terrace of the Elephants, Neak Pean, Ta Som, Ta Nei, and some others in other parts of the country. Thirdly, he founded his great capital, Angkor Thom. Finally, in the center, he built the Bayon with its two hundred stone faces.

The decline of the Angkor era began after the death of King Jayavarman VII in the early 13th century. Due to the Siamese invasion and the limitation of the irrigation system, Khmer power declined so much that the king was finally obliged to move to the vicinity of Phnom Penh in 1431. Resulting from a series of Siamese and Cham invasions, the country was put as a French protectorate in 1863.

After regaining Independence in 1953, the country has had several names:

1. The Kingdom of Cambodia (under the Reachia Niyum Regime from 1953 to 1970);
2. The Khmer Republic (under the Lon Nol Regime from 1970 to 1975);
3. Democratic Kampuchea (under the Pol Pot Genocidal Regime from 1975 to 1979);
4. The People’s Republic of Kampuchea (1979-1989);
5. The State of Cambodia (1989-1993);
6. The Kingdom of Cambodia (1993 until now).

Definitions of Tourism Statistics

- **Statistics** are the data obtained by collecting, processing, compiling, analyzing, publishing and disseminating results, gathered from respondents through statistical collections or from administrative data sources.
- **Data** are information in the form of numbers.
- **Tourism statistics** are the designated official statistics produced by the Ministry of Tourism.
- **Tourism** refers to the activities of individuals travelling to and staying in places outside their usual environment for a specified period and not exceeding one consecutive year for leisure, recreation, business, and any other legal tourism purposes.
- **Tourist** refers to any persons who are Cambodian or non-Cambodian nationals travelling to other places outside their usual environment, staying at least overnight and not exceeding a specified period for leisure, recreation, business, and other legal tourism purposes; and not relevant to the purpose of permanent residence or any remunerated activities.
- **Domestic tourist** refers to any persons who are Cambodian citizens travelling within Cambodia and staying at least overnight and not exceeding a specified period for leisure, recreation, business and other legal tourism activities.
- **International tourist** refers to any foreign visitors to Cambodia who stay at least overnight but not more than a specified period for leisure, recreation, business and other legal tourism purposes; and not relevant to the purpose of permanent residence or any remunerated activities.
- **Internal international tourist** refers to any persons who are not Cambodian nationals, but have legal temporary residence in Cambodia, travelling to and staying overnight for leisure, recreation, business and other legal tourism purposes in the Kingdom of Cambodia.
- **Cambodia outbound tourist** refers to any Cambodian nationals who travel overseas (Cambodian nationals living abroad are excluded), staying at least overnight for leisure, recreation, business or other legal tourism purposes.
- **Same-day visitor** (Excursionist) refers to any individuals who are Cambodian or non-Cambodian nationals travelling to other places outside their usual environment for leisure, recreation, business, and other legal tourism purposes, but do not stay overnight there.
- **Tourism survey** is a scientific statistical collection of data from domestic or international tourism which statistics unit selects as samples.
- **Tourism manpower** refers to any persons who have been working in the tourism sector.
- **Tourism skilled labor** refers to any persons who have professionalism in tourism and have been working in the tourism sector.

Adopted by Ministry of Tourism 2011

CONTENTS

Minister Message	
Disclaimer	
General Information	
Definitions of Tourism Statistics	
Tourism Highlight 1993 – 2018	
Quick Overview of Key Trends in 2018	
Map of International Border Check-Point	

Unit I – Inbound and Outbound Tourism Statistics

International Tourist Arrivals to Cambodia by Months in 2013 – 2018	1
International Tourist Arrivals to Cambodia by Country of Residence in 2018	2 – 3
<i>(by all means of transport)</i>	
International Tourist Arrivals to Cambodia by Purposes of Visit in 2018	4 – 5
<i>(by all means of transport)</i>	
International Tourist Arrivals to Cambodia by Regions in 2018	6
<i>(by all means of transport)</i>	
International Tourist Arrivals to Cambodia by Mode of Arrivals in 2017 – 2018	7
International Tourist Arrivals to Cambodia by Mode of Arrivals in 2014 – 2018 <i>(by all means of transport)</i>	7
Top ten Generating Markets 2012 – 2018	8
International Tourist Arrivals to Cambodia by International Border Check-points in 2018	9 – 10
Cambodian Outbound Tourism by Int'l Border Check-points in 2008 – 2018	11
International Outbound Tourist Departures by Int'l Border Check-points in 2010 – 2018.....	12
Major Data in 1993 – 2018	13
Profile of International Tourist Arrivals to Cambodia in 2018 (Inbound Tourism Survey 2018)	14

Section I: Phnom Penh International Airport (PNH)

International Tourist Arrivals to Phnom Penh International Airport by Months in 2011 – 2018	15
International Tourist Arrivals to Phnom Penh International Airport by Country of Residence in 2018.....	16 – 17
Top Ten Generating Markets in 2018, Int'l Tourist Arrivals by Rank.....	17
International Tourist Arrivals to Phnom Penh International Airport by Regions in 2018	18
International Tourist Arrivals to Phnom Penh International Airport by Purposes of Visit in 2011 – 2018....	19
Int'l Tourist Departures from Phnom Penh International Airport (PNH) by Months in 2011 – 2018.....	20

Section II: Siem Reap International Airport (REP)

International Tourist Arrivals to Siem Reap International Airport by Months in 2011 – 2018	21
<i>(by air only)</i>	
International Tourist Arrivals to Siem Reap International Airport by Country of Residence in 2018.....	22 – 23
Top Ten Generating Markets in 2018, Tourist Arrivals by Rank <i>(by air only)</i>	23
International Tourist arrivals to Siem Reap International Airport by Regions in 2018	24
International Tourist Arrivals to Siem Reap International Airport by Purposes of Visit in 2011 – 2018	25
International Tourist Arrivals to Siem Reap Angkor by Months in 2011 – 2018.....	26
<i>(by all means of transport)</i>	
International Tourist Arrivals to Siem Reap Angkor by Mode of Transport in 2013 – 2018.....	26
Top Ten Generating Markets in 2018, Int'l Tourist Arrivals <i>(by all means of transport)</i>	26

Section III: International Border Check-points

International Tourist Arrivals to Cambodia by Land and Waterways in 2011 – 2019	27
Int'l Tourist Arrivals to Cambodia by Land and Waterways by Country of Residence in 2019	28 – 29
Top Ten Generating Markets in 2019, Tourist Arrivals by Rank	29
International Tourist Arrivals to Cambodia by Land and Waterways by Regions in 2019	30
International Tourist Arrivals to Cambodia by Land and Waterways by Purposes of Visit in 2012 – 2019	30

Unit II – Domestic Tourism Statistics

Cambodia Visitor Arrivals to Provinces in 2008 – 2019	31
Foreign Visitor Arrivals to Provinces in 2008 – 2019	31

Unit III – Tourism Supply

Tourism Supply: Accommodations

Number of Hotels, Guesthouses, Restaurant and Massage in 1997 – 2019	32
Tourism Service Statistics in 2019	32

Tourism Supply: Tourism services

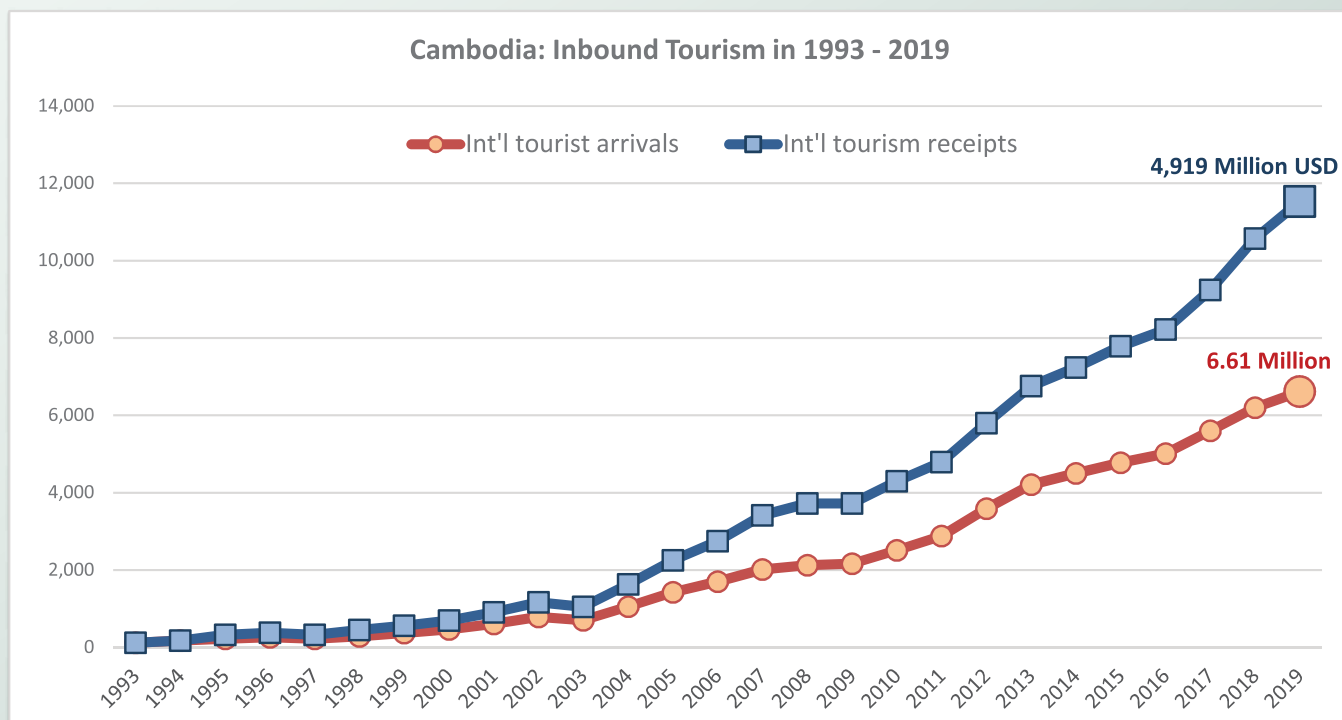
Number of Tour Operators and Travel Agent in 1996 – 2019	33
Number of Tourist Guides License in 2019	33
Hotels Classifications in 2019	34
Published by	35



Tourism Highlights

Int'l Tourist Arrivals, Average Length of Stays, Hotel Occupancy & Int'l Tourism Receipts 1993 - 2019

Years	Int'l Tourist Arrivals		Average Length of Stays (Days)	Hotel Occupancy (%)	Int'l Tourism Receipts (Million US\$)
	Number	Change (%)			
1993	118,183	-	N/A	N/A	N/A
1994	176,617	49.4	N/A	N/A	N/A
1995	219,680	24.4	8.0	37.0	100
1996	260,489	18.6	7.5	40.0	118
1997	218,843	-16.0	6.4	30.0	103
1998	286,524	30.9	5.2	40.0	166
1999	367,743	28.3	5.5	44.0	190
2000	466,365	26.8	5.5	45.0	228
2001	604,919	29.7	5.5	48.0	304
2002	786,524	30.0	5.8	50.0	379
2003	701,014	-10.9	5.5	50.0	347
2004	1,055,202	50.5	6.3	52.0	578
2005	1,421,615	34.7	6.3	52.0	832
2006	1,700,041	19.6	6.5	54.8	1,049
2007	2,015,128	18.5	6.5	54.8	1,400
2008	2,125,465	5.5	6.7	62.7	1,595
2009	2,161,577	1.7	6.5	63.6	1,561
2010	2,508,289	16.0	6.5	65.7	1,786
2011	2,881,862	14.9	6.5	66.2	1,912
2012	3,584,307	24.4	6.3	68.5	2,210
2013	4,210,165	17.5	6.8	69.5	2,547
2014	4,502,775	7.0	6.5	67.6	2,736
2015	4,775,231	6.1	6.8	70.2	3,012
2016	5,011,712	5.0	6.3	68.9	3,212
2017	5,602,157	11.8	6.6	71.3	3,638
2018	6,201,077	10.7	7.0	72.2	4,375
2019	6,610,592	6.6	6.2	63.5	4,919



Quick Overview of Key Trends

International Tourism – 2019 Results

- In Cambodia, there are a total of 25 international border checkpoints including 3 primary international airports, 16 international border checkpoints, and 4 international sea and river ports.
- In 2019, Cambodia welcomed 6,610,592 (6.61 Million) international tourists which increased by 6.6% comparing to year 2018.
- Asia and the Pacific were recorded an increase in international tourist arrivals by +9% (from 4,995,504 to 5,442,942). To a certain extent, ASEAN region was reported an increase by 7.8% (from 2,067,504 to 2,228,185). European tourists decreased by -3.0% (from 818,661 to 793,937). Americas were recorded a decrease by -4.2% (from 369,319 to 353,963). Africa was reported an increase by 9.7% (from 12,435 to 13,646). For the Middle East, international tourist arrivals increased by 21.4% (from 5,029 to 6,104).

Mode of Arrivals

- By Air, Cambodia received 4,403,995 international tourists, equal to 66.6%, with a growth of 7.5%. Under this category, Phnom Penh International Airport received 2,071,907 tourists equal to 31.3%, increased by 7.7%. Siem Reap International Airport received 1,665,365 tourists, equal to 25.2%, decreased by -14.1%. Kong Keng International Airport welcomed 666,723 tourists equal to 10.1%, with a noticeable growth of 185.5%.
- By land, Cambodia received 2,049,748 tourists, equal to 31.0%, increased by 4.6%. Under this category, Cambodia–Thailand border checkpoints welcomed 981,121 tourists equal to 14.8%, decreased by -2.5%. Poi Pet border checkpoint recorded 574,433 tourists, equal to 8.7%, increased by 1.1%. Cambodia– Vietnam border checkpoints welcomed 1,177,047 tourists, equal to 17.8%, with an increase of 11.5%. Bavet border checkpoint recorded 869,177 tourists, equal to 13.1%, increased by 26.6%. Cambodia–Laos PDR border checkpoint received 48,429 tourists, equal to 0.7%, increased by 15.6%.
- By waterways, Cambodia received 156,849 tourists, equal to 2.4%, increased by 8.8%. For waterways, there were 37 international cruise ships entering Sihanoukville sea port, which received 77,881 international tourists, equal to 1.2%, increased by 59.8%.

Top Arrivals

- Chinese tourists accounted for 2,361,849 equal to 35.7%, which was increased by 16.7%. China is currently deemed to be the most potential market for Cambodia tourism. 96.8% of Chinese tourists mainly came to Cambodia by air.
- Vietnamese tourists accounted for 908,803, equal to 13.7%, increased by 13.6%. However, 95% of Vietnamese tourists travelled into Cambodia by land mainly.
- Thailand’s tourists consisted of 466,493, equal to 7.1%, increased by 22.0%. The total of 73.8% of Thai tourists travelled into Cambodia by land.
- Laos tourists consisted of 363,951, equal to 5.5 %, decreased by -14.6%. Approximately, 98.5% of Laos tourists travelled into Cambodia by land.
- Korean tourists accounted for 254,874 equal to 3.9%, decreased by -15.5%. With this figure, 89.9% of Korean tourists came to Cambodia by air.
- American tourists consisted of 248,863 equal to 3.8%, decreased by -0.8%. With this rate, 83.5% of American tourists travelled into Cambodia by air.
- Japanese tourists consisted of 207,636, equal to 3.1%, decreased by -1.3%. The total of 90.1% of Japanese tourists visited Cambodia by air.
- Malaysian tourists accounted for 203,008, equal to 3.1%, which increased by 0.9%. The total of 78.6% of Malaysian tourists arrived in Cambodia by air.
- French tourists accounted for 164,117, equal to 2.5%, decreased by -3.9%. With this growth rate, 78.3% of French tourists arrived in Cambodia by air.
- U.K tourists accounted for 163,177, equal to 2.5%, increased by 0.5%. With this figure, 64.9% of U.K tourists travelled into Cambodia by air.

Cambodian Outbound Tourism

- Cambodian outbound tourists accounted for 2,038,284, with a growth rate of 2.1%.

International Tourism Receipts and Employment

- Based on the primary data of the results of Inbound Tourism Survey 2019 and travel credits, Cambodia had been reported to approximately earn USD 4,919 Million from tourism sector, increased by +12.4%, compared to year 2018.
- Tourism receipts contributed 12.1% to Gross Domestic Products (GDP) of Cambodia in 2019.
- Approximately 630K direct jobs were created in tourism sector including accommodation, food and beverage, transportation, entertainment and recreation, hospitality and others.

Purposes of Visit

- The primary purposes of tourists were holiday and leisure. The first target included recreation, sports, medical treatment and religion or pilgrimages, which was equal to 71.1%. The second target was business purposes, equal to 18.7%. Visiting Friends and Relatives (VFR) was the third target, accounted for 5.1%. The official mission accounted for 1.5%. Last of all, MICE (Meetings, Incentives, Conventions, and Exhibitions) was equal to 0.5%. For not-mentioning activities, these accounted for 3.1%.

Visitor Profile:

- Cambodia received 6.61 million international tourists in 2019, which female accounted for 41.4% of total international arrivals. Noticeably, 77.4% of tourist arrivals was the first visit, and 22.6% of tourists recorded as revisited tourists. Among international tourist arrivals, it is seen that the group ages of 25-34 took the first place, accounted for an average of 34.6% of total arrivals, and followed by the group ages of 35-44, consisted of 18.6%. Moreover, for international tourist occupations, 28.4% of the tourists were employees, 24.3% professionals, 2.5% government officials, 19.3% businesspersons, 18.6% students, 4.6% retired persons and 2.3% others. Besides, the travel arrangements among all international arrivals covered 78.7% by Free Independent Travelers (FIT) and 21.3% by Group Inclusive Travelers (GIT). Cambodia has been welcoming all tourists with different types of accommodations including hotels and guesthouses, accounted for 77.4% and 20.5%, respectively, and other accommodations accounted for 2.1%.

Internal Tourism:

- Domestic Tourists (KHM): Cambodian citizens who travelled within the country accounted for 11.32 million, with a slight increase of 2.3%. Tourists are seen to keep remarkably increasing from year to year as a result of promotion as well as celebration of special events such as Sea Festivals and River Festivals, which are potential tools to attract more tourists from other provinces to visit those areas. Particularly, Coastal Zones and Eco-tourism Zones. These activities are the key factors that push domestic tourists to increase in each province rather than Phnom Penh.
- Foreign Visitors (FOR): Foreigners who travelled within Cambodia approximately accounted for 8.34 million, with a growth rate of 11.2%.

Entry Points

- Cambodia welcomed international tourists via 4 primary entry points. Cambodia-Thailand border checkpoints accounted for 31.7% of all international arrivals. Cambodia-Vietnam border checkpoints accounted for 31.2%, and Laos PDR accounted for 0.8%. Other entry points accounted for 36.3% mainly by air.



UNIT 1

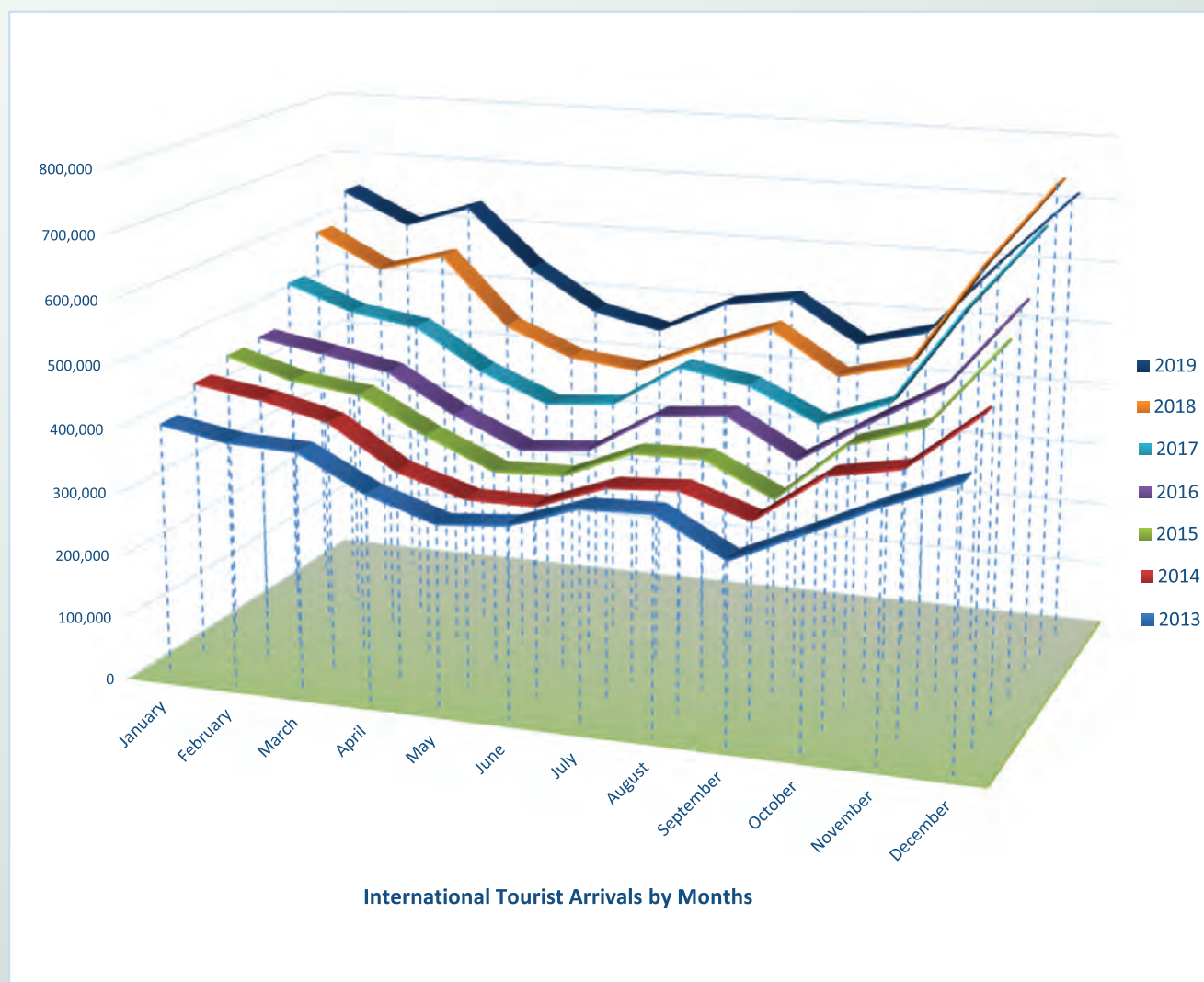
**INBOUND TOURISM
AND
OUTBOUND TOURISM**



Prohok Khtis

International Tourist Arrivals to Cambodia by Months in 2013 - 2019

Months	2013	2014	2015	2016	2017	2018	2019	Change (%)				
								15/14	16/15	17/16	18/17	2019*/18
Q1	1,172,072	1,267,922	1,307,836	1,342,477	1,502,896	1,711,253	1,877,853	3.1	2.6	11.9	13.9	9.7
January	404,106	442,045	460,577	466,086	532,206	596,241	647,206	4.2	1.2	14.2	12.0	8.5
February	385,760	425,801	430,207	448,468	493,316	542,937	597,483	1.0	4.2	10.0	10.1	10.0
March	382,206	400,076	417,052	427,923	477,374	572,075	633,164	4.2	2.6	11.6	19.8	10.7
Q2	920,527	933,446	994,154	1,018,455	1,159,783	1,290,407	1,460,621	6.5	2.4	13.9	11.3	13.2
April	327,000	332,690	361,139	367,684	412,925	463,423	537,656	8.6	1.8	12.3	12.2	16.0
May	292,115	300,302	314,748	320,601	368,809	419,171	472,952	4.8	1.9	15.0	13.7	12.8
June	301,412	300,454	318,267	330,170	378,049	407,813	450,013	5.9	3.7	14.5	7.9	10.3
Q3	964,612	998,690	1,044,880	1,147,483	1,250,082	1,374,373	1,475,832	4.6	9.8	8.9	9.9	7.4
July	338,761	340,091	364,325	395,761	446,627	454,056	502,421	7.1	8.6	12.9	1.7	10.7
August	342,064	347,211	366,096	406,214	427,224	494,043	519,502	5.4	11.0	5.2	15.6	5.2
September	283,787	311,388	314,459	345,508	376,231	426,274	453,909	1.0	9.9	8.9	13.3	6.5
Q4	1,152,954	1,302,717	1,428,361	1,503,297	1,689,396	1,825,044	1,796,286	9.6	5.2	12.4	8.0	-1.6
October	334,410	390,637	408,922	414,077	417,039	453,370	481,782	4.7	1.3	0.7	8.7	6.3
November	386,737	411,501	444,640	477,686	570,471	616,549	602,042	8.1	7.4	19.4	8.1	-2.4
December	431,807	500,579	574,799	611,534	701,886	755,125	712,462	14.8	6.4	14.8	7.6	-5.6
Total	4,210,165	4,502,775	4,775,231	5,011,712	5,602,157	6,201,077	6,610,592	6.1	5.0	11.8	10.7	6.6



International Tourist Arrivals to Cambodia by Country of Residence in 2019

(by all means of transportation)

Regions Country of Residence	2019												Total	Share (%) 2019*
	Jan	Feb	Mar	Apr	May	Jun	Jul	Aug	Sep	Oct	Nov	Dec		
Grand Total	647,206	597,483	633,164	537,656	472,952	450,013	502,421	519,502	453,909	481,782	602,042	712,462	6,610,592	100.0
Americas	45,188	35,598	38,076	26,563	22,342	23,380	26,346	19,133	17,109	23,446	36,287	40,495	353,963	5.4
North America	39,702	31,449	34,287	24,118	19,981	21,921	24,763	15,784	15,512	21,439	33,147	37,451	319,554	4.8
Canada	8,399	7,216	8,412	4,626	3,457	2,511	3,343	2,485	2,437	3,980	6,939	6,384	60,189	0.9
Mexico	1,049	522	812	994	631	639	1,111	437	745	977	1,144	1,441	10,502	0.2
United States of America	30,254	23,711	25,063	18,498	15,893	18,771	20,309	12,862	12,330	16,482	25,064	29,626	248,863	3.8
Central America	154	89	124	157	63	50	137	63	108	122	84	82	1,233	0.0
Costa Rica	108	59	87	117	47	33	49	40	74	98	56	53	821	0.0
Honduras	21	14	23	29	13	6	17	11	11	17	16	11	189	0.0
Jamaica	25	16	14	11	3	11	71	12	23	7	12	18	223	0.0
South America	5,207	4,000	3,605	2,262	2,255	1,384	1,419	3,250	1,474	1,849	2,965	2,857	32,527	0.5
Argentina	1,400	889	646	484	311	180	217	198	234	296	559	485	5,899	0.1
Brazil	1,895	1,246	1,184	759	598	409	333	349	363	585	1,279	1,454	10,454	0.2
Chile	807	1,167	480	338	358	226	219	1,922	322	208	306	258	6,611	0.1
Colombia	596	269	288	375	244	324	342	307	290	438	477	402	4,352	0.1
Ecuador	75	62	80	43	40	36	61	67	34	71	72	48	689	0.0
Peru	193	137	178	103	94	138	122	254	171	131	184	118	1,823	0.0
Uruguay	172	189	712	133	562	38	90	49	34	86	49	56	2,170	0.0
Venezuela	69	41	37	27	48	33	35	104	26	34	39	36	529	0.0
Other America	125	60	60	26	43	25	27	36	15	36	91	105	649	0.0
Africa	1,830	983	1,084	984	817	857	988	1,029	926	939	1,139	2,070	13,646	0.2
North Africa	555	158	136	82	90	98	178	205	123	104	156	195	2,080	0.0
Morocco	95	90	82	40	43	62	116	152	67	53	94	99	993	0.0
Sudan	24	18	12	9	18	24	25	23	23	15	18	34	243	0.0
Tunisia	436	50	42	33	29	12	37	30	33	36	44	62	844	0.0
Subsaharan Africa	1,209	805	934	886	707	746	797	807	796	818	957	1,845	11,307	0.2
Cameroon	36	18	32	35	22	29	34	20	58	22	33	33	372	0.0
Congo	24	28	16	17	18	14	23	18	17	7	208	44	434	0.0
Ghana	36	43	32	32	18	16	33	28	18	39	29	61	385	0.0
Kenya	33	33	52	39	31	34	37	71	68	50	30	83	561	0.0
Liberia	42	32	29	32	24	38	46	32	37	40	31	42	425	0.0
Nigeria	55	69	55	45	48	42	60	42	42	38	44	55	595	0.0
South Africa	902	536	598	584	504	521	506	529	500	561	517	1,453	7,711	0.1
Tanzania	25	9	65	17	8	8	9	17	5	14	16	20	213	0.0
Uganda	36	25	27	72	20	31	28	44	37	31	29	32	412	0.0
Zimbabwe	20	12	28	13	14	13	21	6	14	16	20	22	199	0.0
Other Africa	66	20	14	16	20	13	13	17	7	17	26	30	259	0.0
Middle East	859	424	495	386	269	454	387	455	422	447	598	908	6,104	0.1
Egypt	111	61	83	117	53	85	84	97	118	99	115	414	1,437	0.0
Iraq	53	24	32	21	45	31	30	59	41	107	31	76	550	0.0
Jordan	54	65	58	51	30	76	40	44	54	51	68	86	677	0.0
Kuwait	43	40	60	32	20	50	38	36	32	27	28	60	466	0.0
Oman	45	19	31	31	8	23	22	8	14	19	33	12	265	0.0
Palestine	6	8	9	10	11	18	8	9	8	7	10	10	114	0.0
Qatar	10	7	16	6	6	8	12	10	6	5	12	13	111	0.0
Saudi Arabia	48	36	31	27	12	37	33	54	36	42	41	96	493	0.0
Syria	50	37	90	31	43	38	38	31	39	28	30	44	499	0.0
United Arab Emirates	298	25	29	18	7	35	38	47	22	20	177	38	754	0.0
Yemen	96	88	50	30	23	43	37	49	45	34	38	43	576	0.0
Other Middle East	45	14	6	12	11	10	7	11	7	8	15	16	162	0.0

International Tourist Arrivals to Cambodia by Country of Residence by Purposes of Visit in 2019

(by all means of transportation)

Regions Country of Residence	2018		2019				Share	Change
		Purposes of Visit			Total	Female	2019*	2019*/18
		Holiday	Business	Others				
Grand Total	6,201,077	5,034,903	1,371,363	204,326	6,610,592	2,734,398	100.0	6.6
Asia and the Pacific	4,995,633	4,023,412	1,317,337	102,193	5,442,942	2,194,333	82.3	9.0
ASEAN (Southeast Asia)	2,067,504	2,024,045	163,186	40,954	2,228,185	981,118	33.7	7.8
Brunei Darussalam	790	1,046	27	58	1,131	503	0.0	43.2
Indonesia	55,753	38,530	26,410	1,864	66,804	20,189	1.0	19.8
Lao PDR	426,180	353,782	1,162	9,007	363,951	147,479	5.5	-14.6
Malaysia	201,116	175,693	23,675	3,640	203,008	63,713	3.1	0.9
Myanmar	22,518	16,864	6,279	1,271	24,414	10,366	0.4	8.4
Philippines	92,451	88,564	14,495	1,958	105,017	61,560	1.6	13.6
Singapore	86,251	80,681	5,796	2,087	88,564	28,380	1.3	2.7
Thailand	382,317	414,079	41,214	11,200	466,493	185,470	7.1	22.0
Vietnam	800,128	854,806	44,128	9,869	908,803	463,458	13.7	13.6
Northeast Asia	2,684,908	1,796,139	1,134,307	36,162	2,966,608	1,119,652	44.9	10.5
China	2,024,443	1,299,382	1,046,213	16,254	2,361,849	874,972	35.7	16.7
Hong Kong (China)	12,221	1,898	168	125	2,191	563	0.0	-82.1
Japan	210,471	170,613	31,109	5,914	207,636	82,117	3.1	-1.3
Korea (ROK)	301,770	221,153	24,176	9,545	254,874	106,838	3.9	-15.5
Macau (China)	640	141	45	33	219	51	0.0	-65.8
Mongolia	726	1,304	68	65	1,437	679	0.0	97.9
Taiwan (China)	134,637	101,648	32,528	4,226	138,402	54,432	2.1	2.8
Southern Asia	81,620	85,272	11,298	1,483	98,053	25,808	1.5	20.1
Afghanistan	276	302	41	36	379	112	0.0	37.3
Bangladesh	3,206	5,394	1,440	247	7,081	866	0.1	120.9
Bhutan	174	184	25	56	265	97	0.0	52.3
India	65,882	67,480	7,249	557	75,286	21,557	1.1	14.3
Iran	1,515	1,231	92	50	1,373	458	0.0	-9.4
Nepal	3,102	3,161	606	244	4,011	1,098	0.1	29.3
Pakistan	3,567	4,014	699	122	4,835	613	0.1	35.5
Sri Lanka	3,898	3,506	1,146	171	4,823	1,007	0.1	23.7
Oceania	152,212	116,353	7,931	22,816	147,100	66,639	2.2	-3.4
Australia	127,430	98,890	6,752	17,611	123,253	55,981	1.9	-3.3
Fiji	262	409	75	59	543	209	0.0	107.3
New Zealand	24,520	17,054	1,104	5,146	23,304	10,449	0.4	-5.0
Other Asia & the Pacific	9,389	1,603	615	778	2,996	1,116	0.0	-68.1
Europe	818,661	720,440	34,502	38,995	793,937	363,839	12.0	-3.0
Northern Europe	219,964	202,542	10,624	3,179	216,345	92,963	3.3	-1.6
Denmark	12,688	11,131	481	231	11,843	5,422	0.2	-6.7
Finland	7,375	5,499	379	167	6,045	2,643	0.1	-18.0
Iceland	761	776	59	50	885	380	0.0	16.3
Ireland	12,142	11,254	600	155	12,009	5,408	0.2	-1.1
Norway	9,463	7,795	263	248	8,306	3,748	0.1	-12.2
Sweden	15,140	12,791	759	530	14,080	5,837	0.2	-7.0
United Kingdom	162,395	153,296	8,083	1,798	163,177	69,525	2.5	0.5
Western Europe	349,469	289,046	15,789	32,625	337,460	150,096	5.1	-3.4
Austria	11,374	9,880	356	471	10,707	4,910	0.2	-5.9
Belgium	18,499	17,466	900	904	19,270	8,834	0.3	4.2
France	170,844	128,073	9,210	26,834	164,117	73,589	2.5	-3.9
Germany	98,976	89,488	2,799	2,084	94,371	41,148	1.4	-4.7
Luxembourg	690	817	69	45	931	399	0.0	34.9
Monaco	93	51	15	18	84	25	0.0	-9.7
Netherlands	28,911	26,063	1,459	762	28,284	12,578	0.4	-2.2
Switzerland	20,082	17,208	981	1,507	19,696	8,613	0.3	-1.9
Central / Eastern Europe	125,989	108,402	4,092	1,582	114,076	60,400	1.7	-9.5
Bulgaria	2,817	2,752	112	77	2,941	1,346	0.0	4.4
Czech Republic	7,000	6,821	158	94	7,073	3,176	0.1	1.0
Estonia	3,240	1,353	59	38	1,450	669	0.0	-55.2
Hungary	5,460	5,900	157	116	6,173	3,100	0.1	13.1
Kazakhstan	1,989	1,694	398	58	2,150	1,132	0.0	8.1
Kyrgyzstan	293	273	75	37	385	197	0.0	31.4
Latvia	1,495	1,248	78	29	1,355	711	0.0	-9.4
Lithuania	2,250	2,186	69	30	2,285	1,247	0.0	1.6
Poland	20,758	19,182	321	115	19,618	9,960	0.3	-5.5
Romania	3,866	3,423	159	119	3,701	1,954	0.1	-4.3
Russian Federation	64,726	53,307	1,688	658	55,653	30,754	0.8	-14.0
Slovakia	4,120	2,929	111	75	3,115	1,491	0.0	-24.4
Ukraine	7,424	6,815	581	80	7,476	4,337	0.1	0.7
Uzbekistan	551	519	126	56	701	326	0.0	27.2

International Tourist Arrivals to Cambodia by Country of Residence by Purposes of Visit in 2019

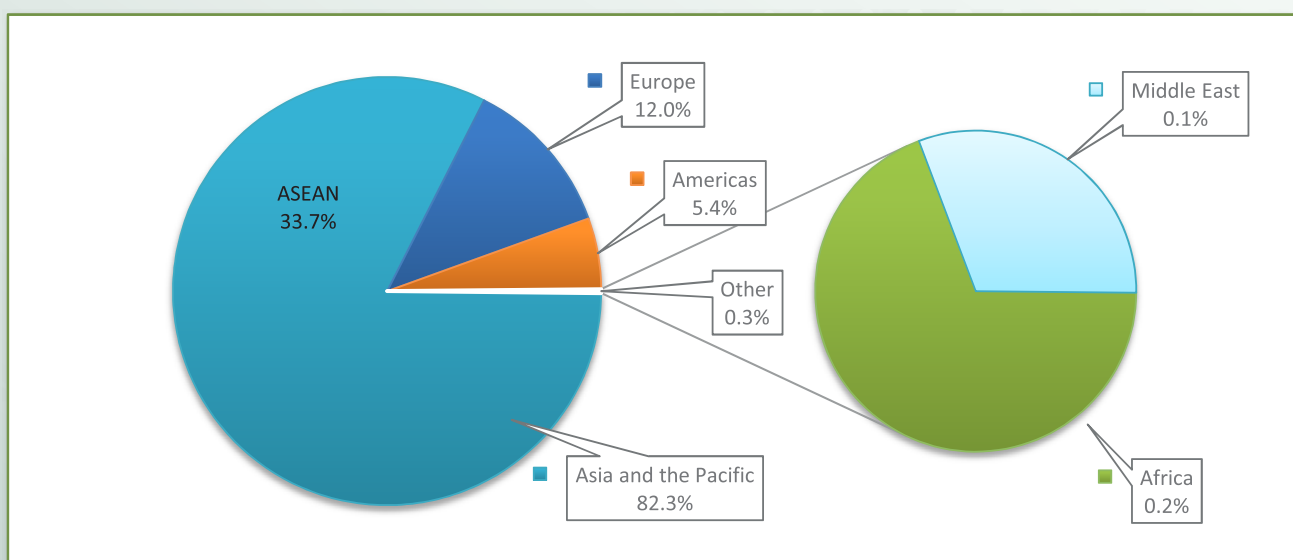
(by all means of transportation)

Regions Country of Residence	2018	2019			Total	Female	Share	Change
		Purposes of Visit					2019*	2019*/18
		Holiday	Business	Others			(%)	(%)
Grand Total	6,201,077	5,034,903	1,371,363	204,326	6,610,592	2,734,398	100.0	6.6
Southern Europe	95,518	97,851	2,996	983	101,830	49,737	1.5	6.6
Croatia	2,363	1,402	73	52	1,527	736	0.0	-35.4
Greece	1,924	2,060	81	66	2,207	998	0.0	14.7
Italy	33,979	39,034	1,472	410	40,916	19,147	0.6	20.4
Malta	439	464	20	23	507	206	0.0	15.5
Portugal	7,164	8,005	228	66	8,299	4,289	0.1	15.8
Serbia	1,249	1,085	66	51	1,202	617	0.0	-3.8
Slovenia	1,565	1,570	133	53	1,756	717	0.0	12.2
Spain	46,835	44,231	923	262	45,416	23,027	0.7	-3.0
East Mediterranean Europe	22,154	21,896	791	423	23,110	10,195	0.3	4.3
Israel	14,727	15,946	373	125	16,444	7,392	0.2	11.7
Turkey	7,427	5,950	418	298	6,666	2,803	0.1	-10.2
Other Europe	5,567	703	210	203	1,116	448	0.0	-80.0
Americas	369,319	274,404	17,295	62,264	353,963	168,694	5.4	-4.2
North America	321,069	241,868	16,126	61,560	319,554	150,409	4.8	-0.5
Canada	61,551	48,872	3,542	7,775	60,189	27,889	0.9	-2.2
Mexico	8,705	10,143	212	147	10,502	5,518	0.2	20.6
United States of America	250,813	182,853	12,372	53,638	248,863	117,002	3.8	-0.8
Central America	1,945	1,075	90	68	1,233	595	0.0	-36.6
Costa Rica	1,490	764	29	28	821	395	0.0	-44.9
Honduras	187	134	39	16	189	96	0.0	1.1
Jamaica	268	177	22	24	223	104	0.0	-16.8
South America	43,799	31,043	959	525	32,527	17,435	0.5	-25.7
Argentina	10,972	5,736	98	65	5,899	3,042	0.1	-46.2
Brazil	12,937	10,102	245	107	10,454	5,509	0.2	-19.2
Chile	7,838	6,211	323	77	6,611	3,535	0.1	-15.7
Colombia	7,605	4,127	123	102	4,352	2,385	0.1	-42.8
Ecuador	805	601	41	47	689	346	0.0	-14.4
Peru	1,939	1,720	42	61	1,823	1,113	0.0	-6.0
Uruguay	1,347	2,094	41	35	2,170	1,239	0.0	61.1
Venezuela	356	452	46	31	529	266	0.0	48.6
Other America	2,506	418	120	111	649	255	0.0	-74.1
Africa	12,435	11,440	1,711	495	13,646	6,134	0.2	9.7
North Africa	1,394	1,880	109	91	2,080	939	0.0	49.2
Morocco	868	914	51	28	993	436	0.0	14.4
Sudan	224	179	24	40	243	71	0.0	8.5
Tunisia	302	787	34	23	844	432	0.0	179.5
Subsaharan Africa	10,529	9,404	1,548	355	11,307	5,103	0.2	7.4
Cameroon	258	283	52	37	372	102	0.0	44.2
Congo	305	367	32	35	434	181	0.0	42.3
Ghana	502	301	54	30	385	84	0.0	-23.3
Kenya	485	454	55	52	561	303	0.0	15.7
Liberia	1,399	384	22	19	425	74	0.0	-69.6
Nigeria	535	228	309	58	595	92	0.0	11.2
South Africa	6,599	6,706	949	56	7,711	3,880	0.1	16.9
Tanzania	107	177	19	17	213	61	0.0	99.1
Uganda	166	346	30	36	412	206	0.0	148.2
Zimbabwe	173	158	26	15	199	120	0.0	15.0
Other Africa	512	156	54	49	259	92	0.0	-49.4
Middle East	5,029	5,207	518	379	6,104	1,398	0.1	21.4
Egypt	846	1,295	103	39	1,437	424	0.0	69.9
Iraq	577	391	63	96	550	96	0.0	-4.7
Jordan	495	566	85	26	677	133	0.0	36.8
Kuwait	472	370	51	45	466	84	0.0	-1.3
Oman	259	229	20	16	265	53	0.0	2.3
Palestine	193	82	18	14	114	18	0.0	-40.9
Qatar	117	71	20	20	111	18	0.0	-5.1
Saudi Arabia	321	437	26	30	493	90	0.0	53.6
Syria	480	447	32	20	499	87	0.0	4.0
United Arab Emirates	248	689	42	23	754	243	0.0	204.0
Yemen	653	528	27	21	576	98	0.0	-11.8
Other Middle East	368	102	31	29	162	54	0.0	-56.0

International Tourist Arrivals to Cambodia by Regions in 2019

(by all means of transportation)

Months	Asia & the Pacific		Europe	Americas	Africa	Middle East	Total
		ASEAN					
Q1	1,461,738	517,660	291,578	118,862	3,897	1,778	1,877,853
January	493,087	209,653	106,242	45,188	1,830	859	647,206
February	462,039	143,763	98,439	35,598	983	424	597,483
March	506,612	164,244	86,897	38,076	1,084	495	633,164
Q2	1,262,076	485,263	122,493	72,285	2,658	1,109	1,460,621
April	453,254	184,817	56,469	26,563	984	386	537,656
May	414,833	146,635	34,691	22,342	817	269	472,952
June	393,989	153,811	31,333	23,380	857	454	450,013
Q3	1,260,480	503,550	148,557	62,588	2,943	1,264	1,475,832
July	419,714	151,863	54,986	26,346	988	387	502,421
August	439,176	171,152	59,709	19,133	1,029	455	519,502
September	401,590	180,535	33,862	17,109	926	422	453,909
Q4	1,458,648	721,712	231,309	100,228	4,148	1,953	1,796,286
October	404,536	178,579	52,414	23,446	939	447	481,782
November	477,100	245,609	86,918	36,287	1,139	598	602,042
December	577,012	297,524	91,977	40,495	2,070	908	712,462
Total	5,442,942	2,228,185	793,937	353,963	13,646	6,104	6,610,592
share (%)	82.3	33.7	12.0	5.4	0.2	0.1	100.0



International Tourist Arrivals to Cambodia by Mode of Arrivals in 2018 - 2019

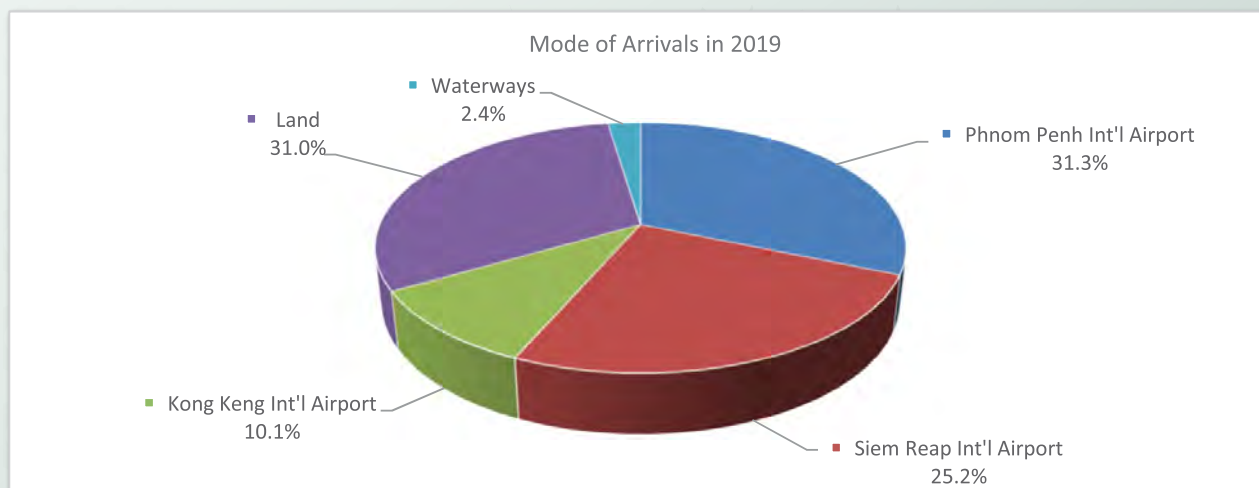
(by all means of transportation)

Months	2018				2019				Change (%) 2019*/18
	Air	Land	Waterways	Total	Air	Land	Waterways	Total	
Q1	1,157,632	498,016	55,605	1,711,253	1,299,122	512,309	66,422	1,877,853	9.7
January	388,555	187,965	19,721	596,241	403,406	219,336	24,464	647,206	8.5
February	373,963	149,717	19,257	542,937	439,273	136,654	21,556	597,483	10.0
March	395,114	160,334	16,627	572,075	456,443	156,319	20,402	633,164	10.7
Q2	846,491	420,593	23,323	1,290,407	1,054,825	385,306	20,490	1,460,621	13.2
April	297,551	155,817	10,055	463,423	376,936	147,252	13,468	537,656	16.0
May	271,761	140,481	6,929	419,171	342,877	126,213	3,862	472,952	12.8
June	277,179	124,295	6,339	407,813	335,012	111,841	3,160	450,013	10.3
Q3	954,798	396,481	23,094	1,374,373	1,039,862	420,231	15,739	1,475,832	7.4
July	308,675	138,271	7,110	454,056	381,095	117,750	3,576	502,421	10.7
August	349,018	138,573	6,452	494,043	369,447	145,381	4,674	519,502	5.2
September	297,105	119,637	9,532	426,274	289,320	157,100	7,489	453,909	6.5
Q4	1,137,949	644,921	42,174	1,825,044	1,010,186	731,902	54,198	1,796,286	-1.6
October	345,129	100,015	8,226	453,370	317,526	155,885	8,371	481,782	6.3
November	379,733	218,832	17,984	616,549	339,886	243,330	18,826	602,042	-2.4
December	413,087	326,074	15,964	755,125	352,774	332,687	27,001	712,462	-5.6
Total	4,096,870	1,960,011	144,196	6,201,077	4,403,995	2,049,748	156,849	6,610,592	6.6

International Tourist Arrivals to Cambodia by Mode of Arrivals in 2015 - 2019

(by all means of transportation)

Mode of Arrivals						Share (%)	Change (%)			
	2015	2016	2017	2018	2019	2019*	16/15	17/16	18/17	2019*/18
Air	2,476,001	2,704,367	3,312,738	4,096,870	4,403,995	66.6	9.2	22.5	23.7	7.5
Phnom Penh Int'l Airport	1,061,034	1,164,240	1,409,833	1,923,773	2,071,907	31.3	9.7	21.1	36.5	7.7
Siem Reap Int'l Airport	1,414,967	1,507,039	1,820,687	1,939,550	1,665,365	25.2	6.5	20.8	6.5	-14.1
Kong Keng (KOS)		33,088	82,218	233,547	666,723	10.1			184.1	185.5
Land & Waterways	2,299,230	2,307,345	2,289,419	2,104,207	2,206,597	33.4	0.4	-0.8	-8.1	4.9
Land	2,151,138	2,153,932	2,144,009	1,960,011	2,049,748	31.0	0.1	-0.5	-8.6	4.6
Waterways	148,092	153,413	145,410	144,196	156,849	2.4	3.6	-5.2	-0.8	8.8
Total	4,775,231	5,011,712	5,602,157	6,201,077	6,610,592	100.0	5.0	11.8	10.7	6.6



Top Ten Generating Markets from 2013 - 2019

2013				
Rank		Arrivals	Share (%)	Change (%)
1	Vietnam	854,104	20.3	11.9
2	China (RPC)	463,123	11.0	38.7
3	Korea (ROK)	435,009	10.3	5.7
4	Lao PDR	414,531	9.8	63.2
5	Thailand	221,259	5.3	9.8
6	Japan	206,932	4.9	15.4
7	U.S.A	184,964	4.4	6.9
8	Australia	132,028	3.1	12.1
9	Russia	131,675	3.1	32.0
10	France	131,486	3.1	8.5

2014				
Rank		Arrivals	Share (%)	Change (%)
1	Vietnam	905,801	20.1	6.1
2	China (RPC)	560,335	12.4	21.0
3	Lao PDR	460,191	10.2	11.0
4	Korea (ROK)	424,424	9.4	-2.4
5	Thailand	279,457	6.2	26.3
6	Japan	215,788	4.8	4.3
7	U.S.A	191,366	4.2	5.3
8	Malaysia	144,437	3.2	10.5
9	France	141,052	3.1	7.3
10	Australia	134,167	3.0	1.6

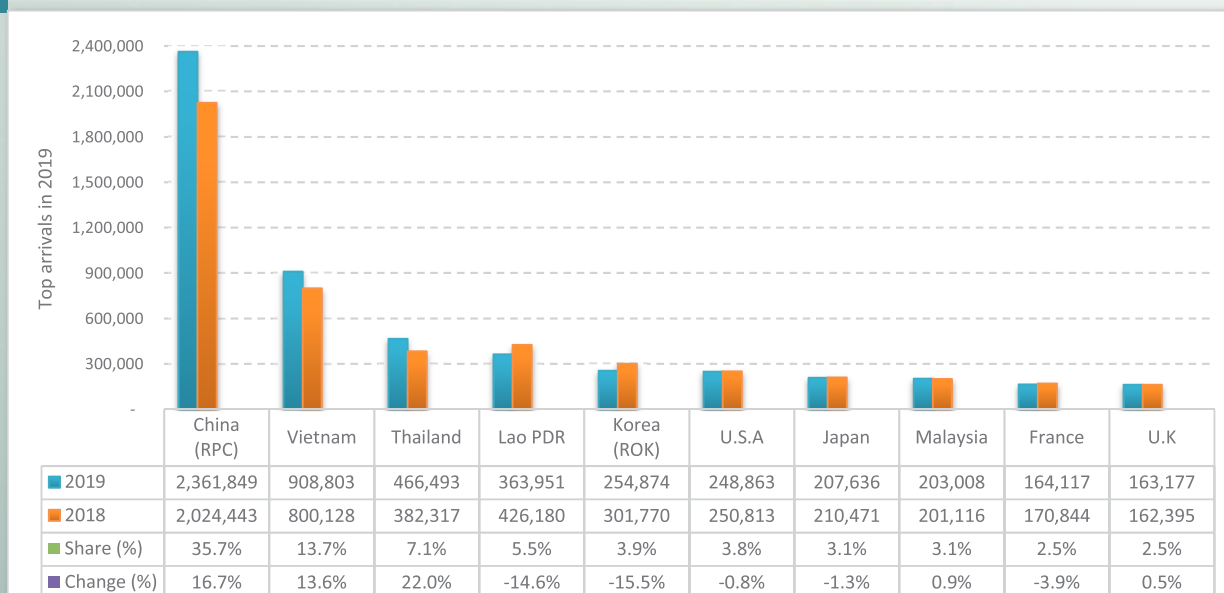
2015				
Rank		Arrivals	Share (%)	Change (%)
1	Vietnam	987,792	20.7	9.1
2	China (RPC)	694,712	14.5	24.0
3	Lao PDR	405,359	8.5	-11.9
4	Korea (ROK)	395,259	8.3	-6.9
5	Thailand	349,908	7.3	25.2
6	U.S.A	217,510	4.6	13.7
7	Japan	193,330	4.0	-10.4
8	U.K	154,265	3.2	15.7
9	Malaysia	149,389	3.1	3.4
10	France	145,724	3.1	3.3

2016				
Rank		Arrivals	Share (%)	Change (%)
1	Vietnam	959,663	19.1	-2.8
2	China (RPC)	830,003	16.6	19.5
3	Thailand	398,081	7.9	13.8
4	Lao PDR	369,335	7.4	-8.9
5	Korea (ROK)	357,194	7.1	-9.6
6	U.S.A	238,658	4.8	9.7
7	Japan	191,577	3.8	-0.9
8	U.K	159,489	3.2	3.4
9	Malaysia	152,843	3.0	2.3
10	France	150,294	3.0	3.1

2017				
Rank		Arrivals	Share (%)	Change (%)
1	China (RPC)	1,210,782	21.6	45.9
2	Vietnam	835,355	14.9	-13.0
3	Lao PDR	502,219	9.0	36.0
4	Thailand	394,934	7.0	-0.8
5	Korea (ROK)	345,081	6.2	-3.4
6	U.S.A	256,544	4.6	7.5
7	Japan	203,373	3.6	6.2
8	Malaysia	179,316	3.2	17.3
9	U.K	171,162	3.1	7.3
10	France	166,356	3.0	10.7

2018				
Rank		Arrivals	Share (%)	Change (%)
1	China (RPC)	2,024,443	32.6	67.2
2	Vietnam	800,128	12.9	-4.2
3	Lao PDR	426,180	6.9	-15.1
4	Thailand	382,317	6.2	-3.2
5	Korea (ROK)	301,770	4.9	-12.6
6	U.S.A	250,813	4.0	-2.2
7	Japan	210,471	3.4	3.5
8	Malaysia	201,116	3.2	12.2
9	France	170,844	2.8	2.7
10	U.K	162,395	2.6	-5.1

2019



International Tourist Arrivals to Cambodia by International Border Check-points in 2019

No. International border check-points	Months													Share (%)
	Jan	Feb	Mar	Apr	May	Jun	Jul	Aug	Sep	Oct	Nov	Dec	TOTAL	
Grand Total	647,206	597,483	633,164	537,656	472,952	450,013	502,421	519,502	453,909	481,782	602,042	712,462	6,610,592	100.0
Air	403,406	439,273	456,443	376,936	342,877	335,012	381,095	369,447	289,320	317,526	339,886	352,774	4,403,995	66.6
Phnom Penh Int'l Airport	172,695	194,439	214,575	177,077	164,985	158,189	176,454	169,073	140,440	157,988	170,858	175,134	2,071,907	31.3
Siem Reap Int'l Airport	203,270	197,172	183,437	146,195	116,193	105,086	116,564	120,337	88,147	106,264	134,561	148,139	1,665,365	25.2
Kong Keng Int'l Airport	27,441	47,662	58,431	53,664	61,699	71,737	88,077	80,037	60,733	53,274	34,467	29,501	666,723	10.1
Lands and Waterways	243,800	158,210	176,721	160,720	130,075	115,001	121,326	150,055	164,589	164,256	262,156	359,688	2,206,597	33.4
Lands	219,336	136,654	156,319	147,252	126,213	111,841	117,750	145,381	157,100	155,885	243,330	332,687	2,049,748	31.0
Waterways	24,464	21,556	20,402	13,468	3,862	3,160	3,576	4,674	7,489	8,371	18,826	27,001	156,849	2.4
1 Cambodia - Thailand	133,555	77,091	80,458	68,416	58,292	45,092	49,079	65,400	76,343	65,063	108,311	154,021	981,121	14.8
Poi Pet	77,014	37,572	40,974	34,610	35,048	20,875	24,857	40,075	48,342	36,377	73,385	105,304	574,433	8.7
Cham Yeam	5,216	4,442	3,894	3,470	2,804	2,279	2,226	2,320	2,346	2,336	2,628	3,291	37,252	0.6
Prom	6,240	6,225	6,736	5,375	5,218	4,987	5,003	5,336	5,163	4,949	5,170	5,327	65,729	1.0
Daung	13,061	12,121	13,973	12,319	12,089	12,441	12,712	12,954	12,557	12,030	11,806	13,742	151,805	2.3
O'Smach	8,556	729	2,955	3,201	79	2,671	2,671	2,476	2,663	3,309	2,872	3,375	35,557	0.5
Chorm	6,990	1,074	941	1,086	1,110	869	729	735	512	1,085	771	1,147	17,049	0.3
Phnom Dei	1,995	1,563	1,759	1,090	1,172	960	881	1,504	1,166	2,039	3,074	4,212	21,415	0.3
Sihanoukville (Int'l sea port)	14,483	13,365	9,226	7,265	772	10	0	0	3,594	2,938	8,605	17,623	77,881	1.2
2 Cambodia - Vietnam	106,608	76,503	92,480	89,206	69,582	67,611	69,064	81,068	86,206	96,777	145,971	195,971	1,177,047	17.8
Bavet	77,397	50,057	56,262	58,430	49,581	47,169	47,602	60,106	67,099	75,820	114,951	164,703	869,177	13.1
Phnom Den	5,484	4,545	5,683	5,856	3,109	4,018	5,001	3,634	2,489	3,682	5,578	6,035	55,114	0.8
Trapaing Plong	1,815	1,233	1,879	1,666	1,263	1,991	1,534	1,569	1,476	1,511	1,679	2,193	19,809	0.3
Trapaing Sré	5,012	2,267	4,359	3,293	2,246	3,046	2,823	2,770	2,967	2,755	3,219	3,324	38,081	0.6
Prek Chak	1,118	5,484	6,733	8,523	4,853	3,779	4,052	4,053	3,910	2,972	4,776	4,396	54,649	0.8
Oya Dao	2,030	2,137	2,720	2,311	2,448	2,335	2,380	2,002	2,050	2,449	2,582	2,817	28,261	0.4
Banteay Chak Krey	1,997	1,763	2,276	1,786	1,782	1,316	1,320	1,487	1,550	1,444	1,725	1,891	20,337	0.3
Prey Vor	1,774	826	1,392	1,138	1,210	807	776	773	770	711	1,240	1,234	12,651	0.2
Kaam Samnor	6,964	5,527	7,958	4,106	2,712	2,812	2,921	3,306	2,428	3,148	7,189	6,743	55,814	0.8
Koh Rorka	1,169	519	1,223	491	299	234	203	265	230	275	994	1,073	6,975	0.1
Phnom Penh Port	1,848	2,145	1,995	1,606	79	104	452	1,103	1,237	2,010	2,038	1,562	16,179	0.2
3 Cambodia - Lao	3,637	4,616	3,783	3,098	2,201	2,298	3,183	3,587	2,040	2,416	7,874	9,696	48,429	0.7
Trapaing Kreal	3,637	4,616	3,783	3,098	2,201	2,298	3,183	3,587	2,040	2,416	7,874	9,696	48,429	0.7

International Tourist Arrivals to Cambodia by International Border Check-points in 2019

(by purposes of visit)

International Border No. Check-points	2018	2019			Total	Share (%) 2019*	Change (%) 2019*/18
		Purposes of Visit					
		Holiday	Business	Others			
Grand Total	6,201,077	5,034,903	1,371,363	204,326	6,610,592	100.0	6.6
Air	4,096,870	3,013,005	1,241,670	149,320	4,403,995	66.6	7.5
Phnom Penh Int'l Airport	1,923,773	1,237,082	697,642	137,183	2,071,907	31.3	7.7
Siem Reap Int'l Airport	1,939,550	1,571,978	81,271	12,116	1,665,365	25.2	-14.1
Kong Keng Int'l Airport	233,547	203,945	462,757	21	666,723	10.1	185.5
Lands and Waterways	2,104,207	2,021,898	129,693	55,006	2,206,597	33.4	4.9
Lands	1,960,011	1,872,250	129,574	47,924	2,049,748	31.0	4.6
Waterways	144,196	149,648	119	7,082	156,849	2.4	8.8
1 Cambodia - Thailand	1,006,527	915,997	49,109	16,015	981,121	14.8	-2.5
Poi Pet	568,333	528,969	37,561	7,903	574,433	8.7	1.1
Cham Yeum	37,041	26,783	7,147	3,322	37,252	0.6	0.6
Prom	81,426	63,080	1,657	992	65,729	1.0	-19.3
Daung	171,842	150,461	220	1,124	151,805	2.3	-11.7
O'Smach	61,412	32,469	1,919	1,169	35,557	0.5	-42.1
Chorm	28,553	16,279	560	210	17,049	0.3	-40.3
Phnom Dei	9,179	20,075	45	1,295	21,415	0.3	133.3
Sihanoukville (Int'l sea port)	48,741	77,881	0	0	77,881	1.2	59.8
2 Cambodia - Vietnam	1,055,796	1,059,589	78,853	38,605	1,177,047	17.8	11.5
Bavet	686,289	805,743	54,898	8,536	869,177	13.1	26.6
Phnom Den	59,974	45,289	1,362	8,463	55,114	0.8	-8.1
Trapaing Plong	22,839	14,571	3,902	1,336	19,809	0.3	-13.3
Trapaing Sré	48,496	31,086	2,133	4,862	38,081	0.6	-21.5
Prek Chak	71,716	43,218	7,654	3,777	54,649	0.8	-23.8
Oya Dao	27,682	20,693	6,775	793	28,261	0.4	2.1
Banteay Chak Krey	25,438	17,670	606	2,061	20,337	0.3	-20.1
Prey Vor	17,907	9,552	1,404	1,695	12,651	0.2	-29.4
Kaam Samnor	65,519	51,763	92	3,959	55,814	0.8	-14.8
Koh Rorka	13,018	3,825	27	3,123	6,975	0.1	-46.4
Phnom Penh Port	16,918	16,179	0	0	16,179	0.2	-4.4
3 Cambodia - Lao	41,884	46,312	1,731	386	48,429	0.7	15.6
Trapaing Kreal	41,884	46,312	1,731	386	48,429	0.7	15.6

Cambodia Outbound Tourists by Int'l Border Check-points in 2019

(by mode of transport and purposes of visit)

No. Check-points	International Border	2019				Total	Share	Change
		Purposes of Visit			2019*		2019*/18	
		Holiday	Business	Others				
Grand Total	1,995,499	2,004,369	3,383	30,532	2,038,284	100.0	2.1	
Air	644,406	756,299	742	17,328	774,369	38.0	20.2	
Phnom Penh Int'l Airport (PNH)	603,774	707,135	706	17,061	724,902	35.6	20.1	
Siem Reap Int'l Airport (REP)	39,926	41,407	28	267	41,702	2.0	4.4	
Kong Keng (KOS)	706	7,757	8	0	7,765	0.4	999.9	
Lands and Waterways	1,351,093	1,248,070	2,641	13,204	1,263,915	62.0	-6.5	
Land	1,341,026	1,241,829	770	7,406	1,250,005	61.3	-6.8	
Waterways	10,067	6,241	1,871	5,798	13,910	0.7	38.2	
1 Cambodia - Thailand	1,098,544	960,351	1,965	6,104	968,420	47.5	-11.8	
Land	1,093,269	958,313	94	306	958,713	47.0	-12.3	
Poi Pet	708,979	553,470	93	278	553,841	27.2	-21.9	
Cham Yeam	60,884	68,372	0	0	68,372	3.4	12.3	
Prom	59,282	81,360	0	0	81,360	4.0	37.2	
Daung	123,881	117,277	0	1	117,278	5.8	-5.3	
O'Smach	127,397	98,506	0	0	98,506	4.8	-22.7	
Chorm	10,322	31,290	1	24	31,315	1.5	203.4	
Phnom Dei	2,524	8,038	0	3	8,041	0.4	218.6	
Waterways	5,275	2,038	1,871	5,798	9,707	0.5	84.0	
Sihanouk Int'l Sea Port	5,275	2,038	1,871	5,798	9,707	0.5	84.0	
2 Cambodia - Vietnam	250,119	286,304	676	5,876	292,856	14.4	17.1	
Land	240,535	277,898	676	5,876	284,450	14.0	18.3	
Bavet	198,768	227,044	253	1,087	228,384	11.2	14.9	
Phnom Den	12,669	16,604	0	0	16,604	0.8	31.1	
Trapaing Plong	4,490	5,341	1	2	5,344	0.3	19.0	
Trapaing Sré	2,715	7,998	418	481	8,897	0.4	227.7	
Prek Chak	9,605	11,040	3	9	11,052	0.5	15.1	
Oya Dao	5,896	2,564	0	4,288	6,852	0.3	16.2	
Banteay Chak Krey	5,810	6,396	1	2	6,399	0.3	10.1	
Prey Vor	582	911	0	7	918	0.0	57.7	
Waterways	4,792	4,203	0	0	4,203	0.2	-12.3	
Kaam Samnor	3,934	3,435	0	0	3,435	0.2	-12.7	
Koh Rorka	503	569	0	0	569	0.0	13.1	
Phnom Penh Port	355	199	0	0	199	0.0	-43.9	
3 Cambodia - Lao	7,222	5,618	0	1,224	6,842	0.3	-5.3	
Trapaing Kreal	7,222	5,618	0	1,224	6,842	0.3	-5.3	

Cambodia Outbound Tourists by Months in 2008 - 2019

Months	Cambodia Outbound Tourists												Change (%) 2019*/18
	2008	2009	2010	2011	2012	2013	2014	2015	2016	2017	2018	2019	
Q1	598,724	61,450	106,095	137,317	188,267	201,544	208,972	246,912	328,347	368,345	439,905	456,876	3.9
Jan	261,007	20,021	37,611	47,641	71,541	71,720	68,618	82,107	108,449	123,142	146,947	154,301	5.0
Feb	236,375	19,871	32,818	42,124	59,042	65,259	67,924	77,358	115,962	121,874	142,332	146,448	2.9
Mar	101,342	21,558	35,666	47,552	57,684	64,565	72,430	87,447	103,936	123,329	150,626	156,127	3.7
Q2	69,831	84,606	126,222	155,716	200,680	239,748	245,814	306,102	371,307	473,663	524,371	548,191	4.5
Apr	26,791	29,481	46,323	52,138	70,738	81,998	90,794	106,444	133,574	176,871	212,661	203,488	-4.3
May	23,610	30,699	42,055	52,907	63,872	83,715	84,366	108,225	127,260	154,811	158,498	182,390	15.1
Jun	19,430	24,426	37,844	50,671	66,070	74,035	70,654	91,433	110,473	141,981	153,212	162,313	5.9
Q3	59,159	91,132	134,978	216,150	196,378	203,101	252,793	311,223	359,867	477,464	495,231	526,149	6.2
Jul	17,688	25,746	44,290	64,015	65,590	67,758	85,357	96,692	115,403	156,701	140,724	166,379	18.2
Aug	20,611	30,934	44,866	74,871	64,786	69,420	81,405	108,335	122,531	154,391	181,396	175,614	-3.2
Sep	20,860	34,452	45,822	77,264	66,002	65,923	86,031	106,196	121,933	166,372	173,111	184,156	6.4
Q4	58,182	102,510	137,695	200,433	206,593	227,253	248,330	329,781	374,509	432,797	535,992	507,068	-5.4
Oct	19,027	36,550	49,932	64,256	70,435	78,287	81,933	121,502	123,149	146,799	183,201	176,676	-3.6
Nov	20,231	31,857	43,981	66,045	69,977	76,657	86,560	108,859	123,723	146,254	171,628	164,608	-4.1
Dec	18,924	34,103	43,782	70,132	66,181	72,309	79,837	99,420	127,637	139,744	181,163	165,784	-8.5
Total	785,896	339,698	504,990	709,616	791,918	871,646	955,909	1,194,018	1,434,030	1,752,269	1,995,499	2,038,284	2.1

International Outbound Tourist Departures by Int'l Border Check Points in 2019

(by mode of transport and purposes of visit)

International Border No. Check-points	2018	2019				Total	Share	Change
		Purposes of Visit			2019*		2019*/18	
		Holiday	Business	Others				(%)
Grand Total	5,659,839	4,757,317	1,293,572	171,945	6,222,834	100.0	9.9	
Air	3,919,431	3,044,145	1,182,743	144,176	4,371,064	70.2	11.5	
Phnom Penh Int'l Airport (PNH)	1,838,839	1,331,946	584,504	131,432	2,047,882	32.9	11.4	
Siem Reap Int'l Airport (REP)	1,864,813	1,509,283	72,262	12,707	1,594,252	25.6	-14.5	
Kong Keng (KOS)	215,779	202,916	525,977	37	728,930	11.7	237.8	
Lands and Waterways	1,740,408	1,713,172	110,829	27,769	1,851,770	29.8	6.4	
Land	1,637,568	1,585,596	110,757	27,743	1,724,096	27.7	5.3	
Waterways	102,840	127,576	72	26	127,674	2.1	24.1	
1 Cambodia - Thailand	829,470	777,725	42,968	17,734	838,427	13.5	1.1	
Land	782,627	700,004	42,968	17,734	760,706	12.2	-2.8	
Poi Pet	469,834	406,885	30,360	6,144	443,389	7.1	-5.6	
Cham Yeam	43,265	30,109	8,488	5,497	44,094	0.7	1.9	
Prom	52,902	61,672	1,298	932	63,902	1.0	20.8	
Daung	159,413	145,817	161	948	146,926	2.4	-7.8	
O'Smach	35,717	25,522	2,050	1,602	29,174	0.5	-18.3	
Chorm	12,304	10,472	596	196	11,264	0.2	-8.5	
Phnom Dei	9,192	19,527	15	2,415	21,957	0.4		
Waterways	46,843	77,721	0	0	77,721	1.2	65.9	
Sihanouk Int'l Sea Port	46,843	77,721	0	0	77,721	1.2	65.9	
2 Cambodia - Vietnam	932,296	956,182	67,000	9,655	1,032,837	16.6	10.8	
Land	820,302	856,472	66,856	9,603	932,931	15.0	13.7	
Bavet	611,781	688,925	50,418	4,303	743,646	12.0	21.6	
Phnom Den	46,896	40,476	1,013	769	42,258	0.7	-9.9	
Trapaing Plong	14,053	9,713	3,107	176	12,996	0.2	-7.5	
Trapaing Sré	33,133	23,318	1,664	482	25,464	0.4	-23.1	
Prek Chak	60,075	51,323	2,808	722	54,853	0.9	-8.7	
Oya Dao	23,487	17,180	5,946	2,990	26,116	0.4	11.2	
Banteay Chak Krey	18,688	16,191	539	86	16,816	0.3	-10.0	
Prey Vor	12,189	9,346	1,361	75	10,782	0.2	-11.5	
Waterways	55,997	49,855	72	26	49,953	0.8	-10.8	
Kaam Samnor	36,180	31,418	51	21	31,490	0.5	-13.0	
Koh Rorka	3,929	3,920	21	5	3,946	0.1	0.4	
Phnom Penh Port	15,888	14,517	0	0	14,517	0.2	-8.6	
3 Cambodia - Lao	34,639	29,120	933	406	30,459	0.5	-12.1	
Trapaing Kreal	34,639	29,120	933	406	30,459	0.5	-12.1	

International Outbound Tourist Departures by Months in 2011 - 2019

Months	International Outbound Tourist Departures										Change (%)	
	2011	2012	2013	2014	2015	2016	2017	2018	2019	18/17	2019*/18	
Q1	782,927	986,757	1,182,291	1,270,810	1,267,149	1,283,278	1,366,465	1,628,923	1,697,629	19.2	4.2	
January	279,303	356,884	413,103	447,276	447,259	448,849	457,302	552,351	610,625	20.8	10.6	
February	253,363	311,097	386,508	416,706	418,965	435,291	441,289	551,588	527,257	25.0	-4.4	
March	250,261	318,776	382,680	406,828	400,925	399,138	467,874	524,984	559,747	12.2	6.6	
Q2	596,094	768,271	920,370	926,547	962,036	940,628	1,178,446	1,263,769	1,406,917	7.2	11.3	
April	215,957	275,739	323,714	319,318	337,825	331,549	397,797	454,736	471,400	14.3	3.7	
May	191,274	245,791	301,372	320,101	331,254	319,112	375,228	419,564	481,321	11.8	14.7	
June	188,863	246,741	295,284	287,128	292,957	289,967	405,421	389,469	454,196	-3.9	16.6	
Q3	704,067	782,113	964,943	946,148	961,697	1,071,411	1,206,679	1,334,458	1,533,800	10.6	14.9	
July	230,580	246,741	333,425	325,697	331,103	361,376	418,524	445,720	502,542	6.5	12.7	
August	257,499	297,916	346,436	340,519	369,558	384,249	430,285	474,791	532,771	10.3	12.2	
September	215,988	237,456	285,082	279,932	261,036	325,786	357,870	413,947	498,487	15.7	20.4	
Q4	764,221	967,443	1,105,993	1,067,919	1,034,737	1,178,000	1,307,420	1,432,689	1,584,488	9.6	10.6	
October	220,797	278,170	318,058	307,931	297,967	345,779	395,101	422,005	474,089	6.8	12.3	
November	254,434	315,143	370,712	356,684	350,634	401,042	443,539	492,390	521,486	11.0	5.9	
December	288,990	374,130	417,223	403,304	386,136	431,179	468,780	518,294	588,913	10.6	13.6	
Total	2,847,309	3,504,584	4,173,597	4,211,424	4,225,619	4,473,317	5,059,010	5,659,839	6,222,834	11.9	9.9	

Tourism Highlights

Int'l Tourist Arrivals, Average Length of Stays, Hotel Occupancy & Int'l Tourism Receipts 1993 - 2019

Years	Int'l Tourist Arrivals		Average Length of Stays (Days)	Hotel Occupancy (%)	Int'l Tourism Receipts (Million US\$)
	Number	Change (%)			
1993	118,183	-	N/A	N/A	N/A
1994	176,617	49.4	N/A	N/A	N/A
1995	219,680	24.4	8.0	37.0	100
1996	260,489	18.6	7.5	40.0	118
1997	218,843	-16.0	6.4	30.0	103
1998	286,524	30.9	5.2	40.0	166
1999	367,743	28.3	5.5	44.0	190
2000	466,365	26.8	5.5	45.0	228
2001	604,919	29.7	5.5	48.0	304
2002	786,524	30.0	5.8	50.0	379
2003	701,014	-10.9	5.5	50.0	347
2004	1,055,202	50.5	6.3	52.0	578
2005	1,421,615	34.7	6.3	52.0	832
2006	1,700,041	19.6	6.5	54.8	1,049
2007	2,015,128	18.5	6.5	54.8	1,400
2008	2,125,465	5.5	6.7	62.7	1,595
2009	2,161,577	1.7	6.5	63.6	1,561
2010	2,508,289	16.0	6.5	65.7	1,786
2011	2,881,862	14.9	6.5	66.2	1,912
2012	3,584,307	24.4	6.3	68.5	2,210
2013	4,210,165	17.5	6.8	69.5	2,547
2014	4,502,775	7.0	6.5	67.6	2,736
2015	4,775,231	6.1	6.8	70.2	3,012
2016	5,011,712	5.0	6.3	68.9	3,212
2017	5,602,157	11.8	6.6	71.3	3,638
2018	6,201,077	10.7	7.0	72.2	4,375
2019	6,610,592	6.6	6.2	63.5	4,919

Average length of stay

Kind of tourist	Phnom Penh	Siem Reap	Expenditure (US\$ / Day)
	(Days)	(Days)	
GIT	4.20	4.10	
FIT	5.80	5.50	
Average	5.00	4.80	100.78

GIT: Group Inclusive Travelers

FIT: Free Independent Travelers

Average expenditure of FIT

Items	Expenditure (US\$)
Accommodation	128.90
Food & beverage	128.90
Shopping	85.93
Local transport	77.24
Others	76.73
Total	497.69

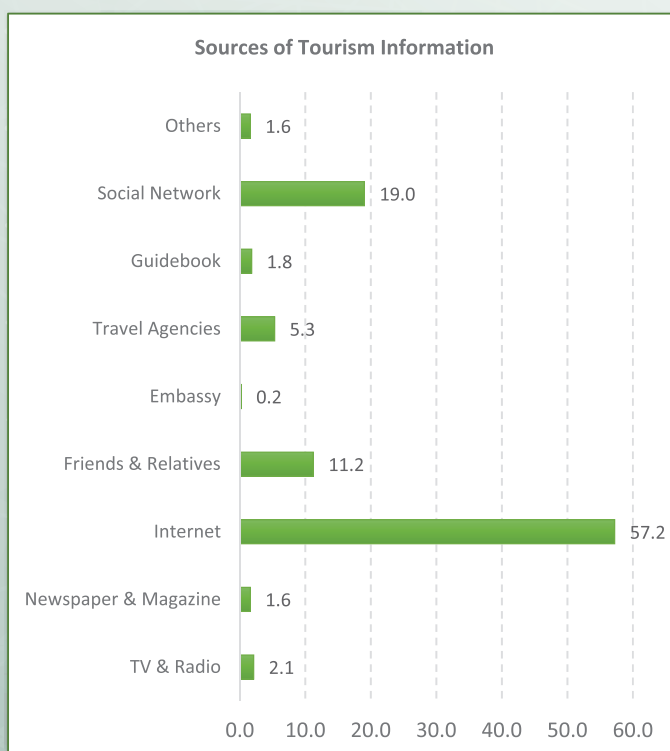
Average expenditure of GIT

Items	Expenditure (US\$)
Package Tours	384.50
(Accommodation, F&B, Local transport, Entrance fee,...)	
Shopping	115.00
Others	98.50
Total	598.00

Profile of international Tourist Arrivals to Cambodia in 2019

Inbound Tourism Survey 2019

Tourist Characteristics	
Mode of Arrivals	(%)
Air	66.6
Land	31.0
Waterways	2.4
Sex	(%)
Male	58.6
Female	41.4
Frequency of Visit	(%)
First Visit	77.4
Revisit	22.6
Travel Arrangement	(%)
GIT (Group Inclusive Travelers)	21.3
FIT (Free Independent Travelers)	78.7
Type of Accommodations	(%)
Hotel	77.4
Guesthouses	20.5
Others	2.1
Age Group	(%)
15 - 24	15.4
25 - 34	34.6
35 - 44	18.6
45 - 54	15.7
55 - 64	11.6
65 - Over	4.1
Purposes of visit	(%)
Holiday & Leisure	71.1
Business	18.7
VFR (Visiting Friends & Relatives)	5.1
Official Mission	1.5
MICE (Meeting Incentive Convention Exhibition)	0.5
Others	3.1
Occupation	(%)
Employee	28.4
Professional	24.3
Official	2.5
Business Person	19.3
Student	18.6
Retired	4.6
Others	2.3
Entry Points	(%)
Thailand	31.7
Vietnam	31.2
Laos PDR	0.8
Others (by Air)	36.3
<i>(Singapore, Malaysia, Korea, China, Japan, Taiwan (China), Hong Kong SAR, Myanmar, Philippines, Others)</i>	
Sources of Tourism Information	(%)
TV & Radio	2.1
Newspaper & Magazine	1.6
Internet	57.2
Friends & Relatives	11.2
Embassy	0.2
Travel Agencies	5.3
Guidebook	1.8
Social Network	19.0
Others	1.6



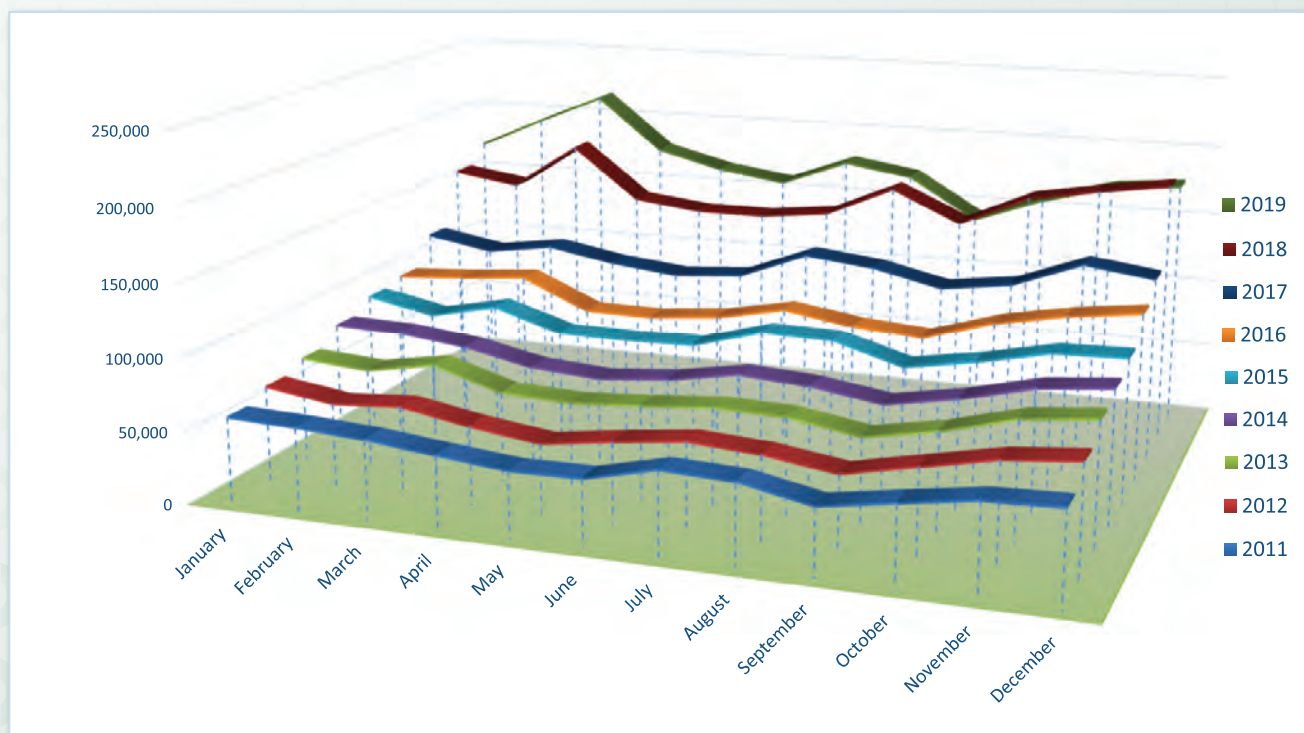
SECTION I

**PHNOM PENH INTERNATIONAL
AIRPORT**



Int'l Tourist Arrivals to Phnom Penh International Airport (PNH) by Months in 2011 - 2019

Months	2011	2012	2013	2014	2015	2016	2017	2018	2019	Change (%)		
										17/16	18/17	2019*/18
Q1	170,558	187,408	218,912	245,071	272,560	303,281	346,603	495,215	581,709	14.3	42.9	17.5
January	58,905	65,956	72,549	84,436	93,817	97,712	118,682	158,980	172,695	21.5	34.0	8.6
February	57,202	59,122	68,988	83,167	84,319	100,709	110,503	152,132	194,439	9.7	37.7	27.8
March	54,451	62,330	77,375	77,468	94,424	104,860	117,418	184,103	214,575	12.0	56.8	16.6
Q2	139,906	155,878	187,758	200,182	239,066	256,048	320,926	432,327	500,251	25.3	34.7	15.7
April	49,478	53,883	62,859	67,435	79,805	84,094	109,072	147,765	177,077	29.7	35.5	19.8
May	44,874	47,636	60,880	64,217	79,166	83,697	104,084	142,286	164,985	24.4	36.7	16.0
June	45,554	54,359	64,019	68,530	80,095	88,257	107,770	142,276	158,189	22.1	32.0	11.2
Q3	157,531	167,096	193,961	217,489	265,480	274,857	359,191	464,217	485,967	30.7	29.2	4.7
July	56,875	60,057	68,078	76,980	93,931	97,789	126,733	147,577	176,454	29.6	16.4	19.6
August	55,182	57,016	66,865	73,895	92,880	90,387	121,631	169,125	169,073	34.6	39.0	0.0
September	45,474	50,023	59,018	66,614	78,669	86,681	110,827	147,515	140,440	27.9	33.1	-4.8
Q4	177,240	206,202	235,746	255,058	283,928	330,054	383,113	532,014	503,980	16.1	38.9	-5.3
October	53,459	60,437	67,988	75,375	87,099	101,708	117,493	169,234	157,988	15.5	44.0	-6.6
November	61,005	70,588	81,430	87,488	97,726	111,098	136,034	177,774	170,858	22.4	30.7	-3.9
December	62,776	75,177	86,328	92,195	99,103	117,248	129,586	185,006	175,134	10.5	42.8	-5.3
Total	645,235	716,584	836,377	917,800	1,061,034	1,164,240	1,409,833	1,923,773	2,071,907	21.1	36.5	7.7

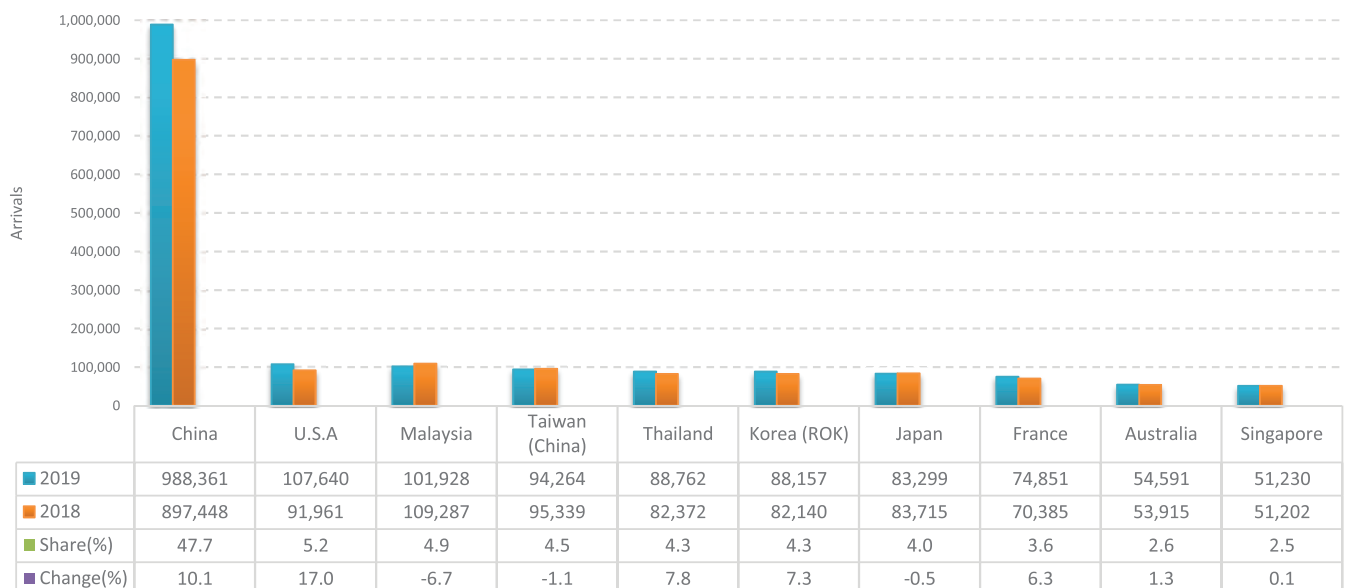


International Tourist Arrivals to Phnom Penh International Airport (PNH) by Country of Residence in 2019

(by Air Only)

Regions Country of Residence	2019												Total	Share (%) 2019*
	Jan	Feb	Mar	Apr	May	Jun	Jul	Aug	Sep	Oct	Nov	Dec		
Grand Total	172,695	194,439	214,575	177,077	164,985	158,189	176,454	169,073	140,440	157,988	170,858	175,134	2,071,907	100.0
Americas	14,259	11,349	12,916	10,980	9,810	11,478	13,805	7,997	7,672	9,512	12,498	14,107	136,383	6.6
North America	13,703	10,917	12,565	10,654	9,163	11,167	13,521	7,694	7,446	9,215	12,085	13,577	131,707	6.4
Canada	2,680	2,235	2,962	2,302	1,359	1,212	1,633	1,191	1,226	1,631	2,246	2,352	23,029	1.1
Mexico	88	85	72	90	77	53	90	67	84	99	100	133	1,038	0.1
United States of America	10,935	8,597	9,531	8,262	7,727	9,902	11,798	6,436	6,136	7,485	9,739	11,092	107,640	5.2
Central America	20	13	34	23	12	14	16	26	18	18	18	33	245	0.0
Costa Rica	8	8	18	13	5	5	4	15	8	4	6	15	109	0.0
Honduras	9	4	15	6	6	3	7	7	4	10	8	6	85	0.0
Jamaica	3	1	1	4	1	6	5	4	6	4	4	12	51	0.0
South America	504	404	297	295	621	292	261	272	203	267	343	435	4,194	0.2
Argentina	82	82	55	38	29	23	24	34	29	17	40	33	486	0.0
Brazil	186	141	116	95	120	153	86	109	78	103	158	213	1,558	0.1
Chile	42	56	19	34	19	28	23	28	25	31	16	24	345	0.0
Colombia	96	76	69	80	45	55	75	58	40	65	74	90	823	0.0
Ecuador	20	19	3	11	10	8	12	21	9	7	11	14	145	0.0
Peru	33	7	12	21	13	13	29	12	10	25	17	23	215	0.0
Uruguay	15	6	4	3	371	1	1	3	2	7	11	18	442	0.0
Venezuela	30	17	19	13	14	11	11	7	10	12	16	20	180	0.0
Other America	32	15	20	8	14	5	7	5	5	12	52	62	237	0.0
Africa	550	486	514	506	338	396	482	436	393	415	421	681	5,618	0.3
North Africa	75	74	66	45	45	60	86	94	72	56	106	123	902	0.0
Morocco	33	40	38	20	20	42	47	51	38	19	58	55	461	0.0
Sudan	14	12	10	9	14	10	24	22	16	10	14	27	182	0.0
Tunisia	28	22	18	16	11	8	15	21	18	27	34	41	259	0.0
Subsaharan Africa	434	404	443	460	291	331	395	337	320	358	308	546	4,627	0.2
Cameroon	21	11	25	26	19	26	26	9	23	16	17	27	246	0.0
Congo	9	16	11	2	6	12	7	7	4	3	4	7	88	0.0
Ghana	35	36	19	23	11	15	26	21	12	21	19	58	296	0.0
Kenya	19	20	41	31	25	15	32	43	27	29	16	46	344	0.0
Liberia	34	20	14	19	9	12	21	11	16	11	11	15	193	0.0
Nigeria	39	62	52	39	40	28	47	36	30	33	30	39	475	0.0
South Africa	243	210	179	270	151	194	196	192	175	213	180	324	2,527	0.1
Tanzania	5	5	63	11	3	0	7	10	2	6	9	5	126	0.0
Uganda	22	19	20	29	15	19	17	8	25	16	10	18	218	0.0
Zimbabwe	7	5	19	10	12	10	16	0	6	10	12	7	114	0.0
Other Africa	41	8	5	1	2	5	1	5	1	1	7	12	89	0.0
Middle East	349	267	267	226	142	269	247	250	220	290	243	665	3,435	0.2
Egypt	45	34	41	78	22	60	56	62	49	67	44	309	867	0.0
Iraq	48	11	22	11	38	18	20	25	17	75	26	62	373	0.0
Jordan	31	35	30	33	11	40	21	20	38	31	39	63	392	0.0
Kuwait	22	25	43	14	5	20	29	8	7	8	14	23	218	0.0
Oman	15	9	12	16	3	2	9	3	5	10	9	7	100	0.0
Palestine	4	3	7	7	5	15	4	6	6	4	3	9	73	0.0
Qatar	6	3	7	1	1	7	4	4	3	1	10	1	48	0.0
Saudi Arabia	30	20	16	13	9	19	23	34	27	33	32	80	336	0.0
Syria	35	23	32	20	24	29	29	21	28	21	21	36	319	0.0
United Arab Emirates	10	17	19	9	3	22	26	24	10	14	7	28	189	0.0
Yemen	78	79	38	23	20	31	26	38	29	26	32	40	460	0.0
Other Middle East	25	8	0	1	1	6	0	5	1	0	6	7	60	0.0

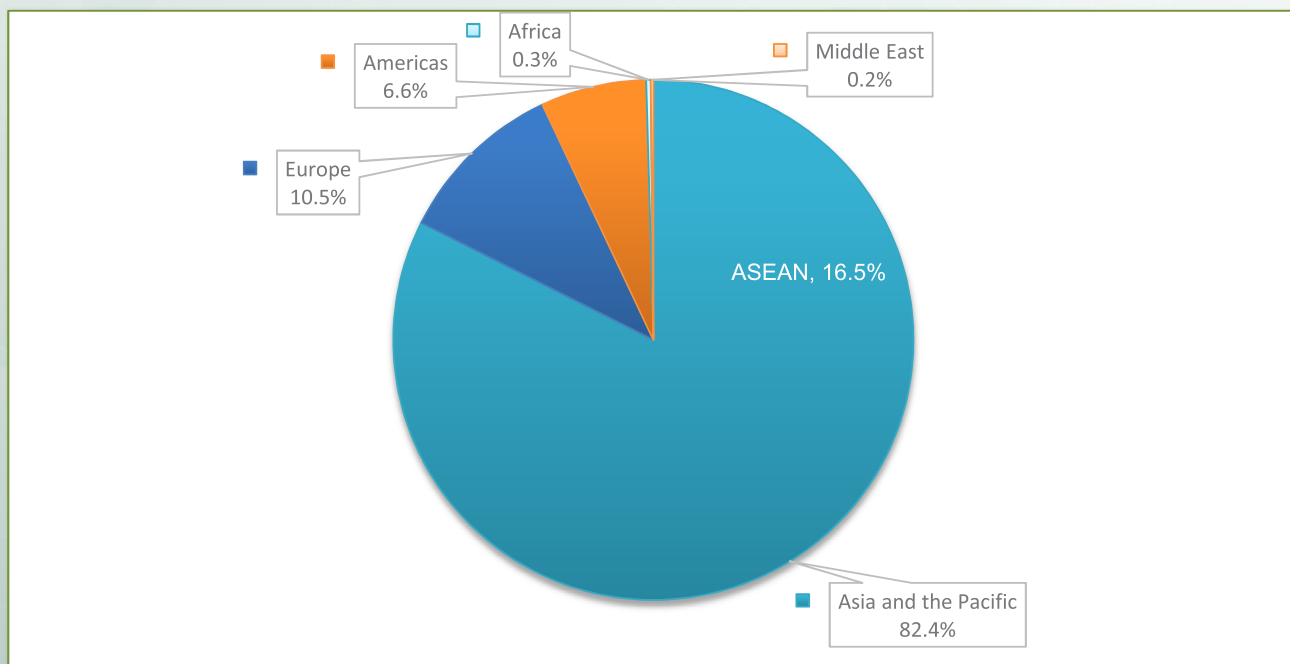
PNH Int'l Airport: Top Ten Generating Markets in 2019



Int'l Tourist Arrivals to Phnom Penh International Airport (PNH) by Regions in 2019

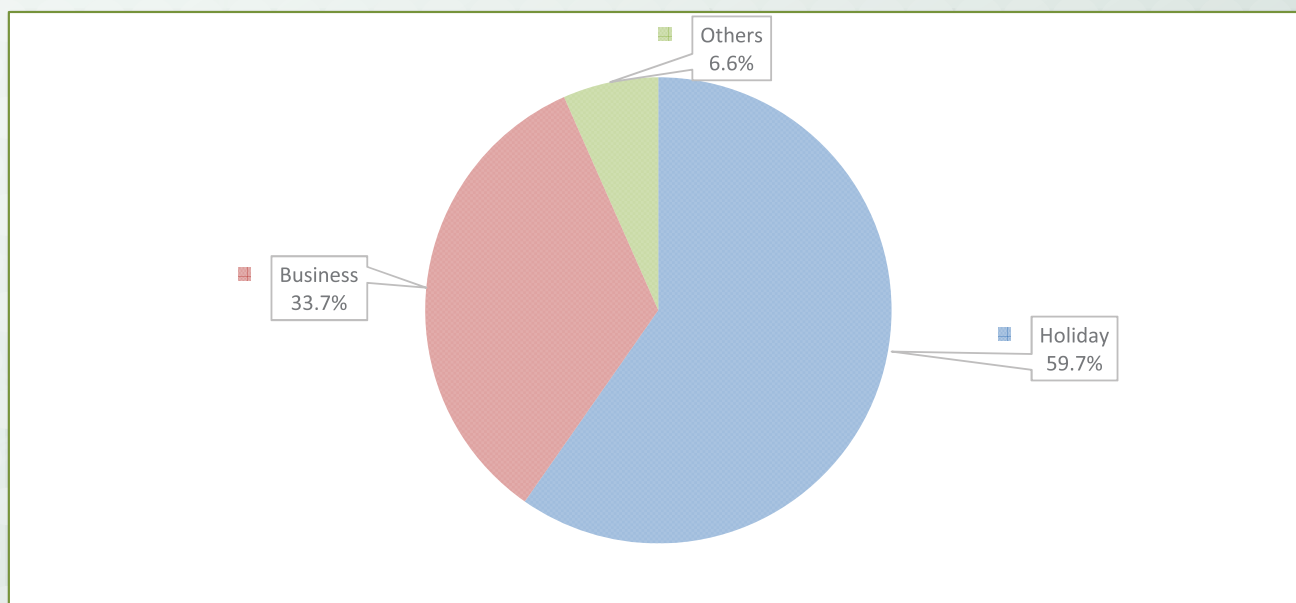
Months	Asia and the Pacific		Europe	Americas	Africa	Middle East	Total
		ASEAN					
Q1	471,200	78,483	69,552	38,524	1,550	883	581,709
January	132,781	25,638	24,756	14,259	550	349	172,695
February	158,068	25,749	24,269	11,349	486	267	194,439
March	180,351	27,096	20,527	12,916	514	267	214,575
Q2	424,528	89,384	41,578	32,268	1,240	637	500,251
April	148,290	31,871	17,075	10,980	506	226	177,077
May	143,161	25,373	11,534	9,810	338	142	164,985
June	133,077	32,140	12,969	11,478	396	269	158,189
Q3	406,968	87,124	47,497	29,474	1,311	717	485,967
July	142,157	32,418	19,763	13,805	482	247	176,454
August	143,967	29,909	16,423	7,997	436	250	169,073
September	120,844	24,797	11,311	7,672	393	220	140,440
Q4	405,452	86,018	59,696	36,117	1,517	1,198	503,980
October	132,617	27,524	15,154	9,512	415	290	157,988
November	135,490	29,014	22,206	12,498	421	243	170,858
December	137,345	29,480	22,336	14,107	681	665	175,134
Total	1,708,148	341,009	218,323	136,383	5,618	3,435	2,071,907
share (%)	82.4%	16.5%	10.5%	6.6%	0.3%	0.2%	100.0%

Note: 10 countries of ASEAN were included in Asia and the Pacific.



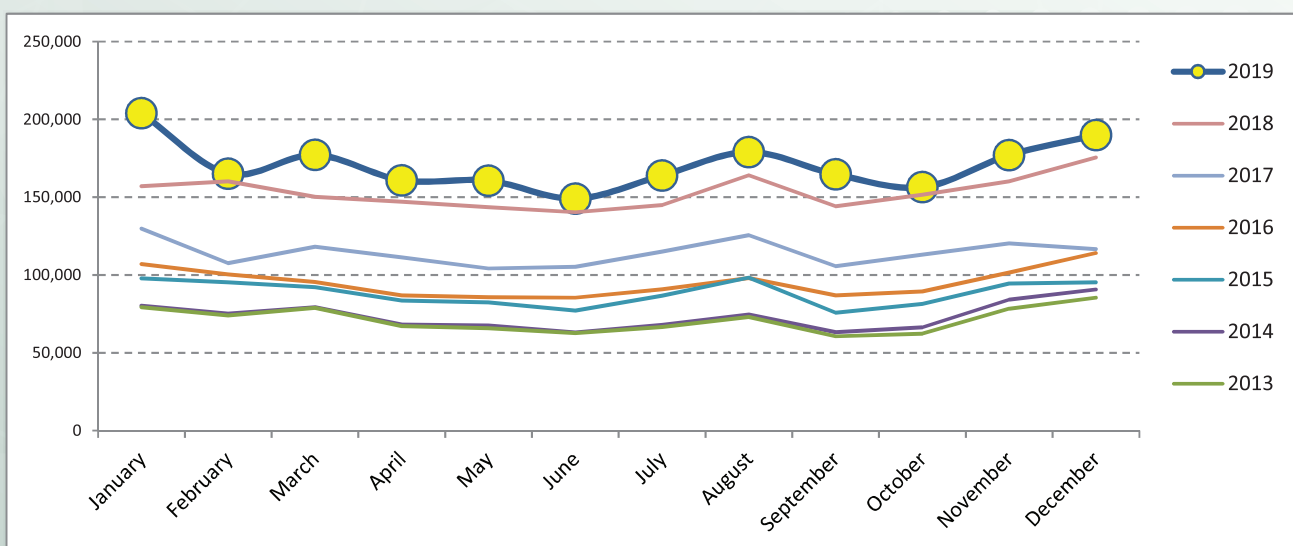
International Tourist Arrivals to Phnom Penh International Airport by Purposes of Visit in 2012 - 2019

Purposes of Visit	Int'l tourist arrivals								Change (%)		
	2012	2013	2014	2015	2016	2017	2018	2019	17/16	18/17	2019*/18
Total	716,584	836,377	917,800	1,061,034	1,164,240	1,409,833	1,923,773	2,071,907	21.1	36.5	7.7
Holiday	532,426	693,535	754,026	856,181	853,704	1,078,041	1,343,310	1,237,082	26.3	24.6	-7.9
Business	107,422	122,773	153,332	181,170	207,144	239,814	483,424	697,642	15.8	101.6	44.3
Others	76,736	20,069	10,442	23,683	103,392	91,978	97,039	137,183	-11.0	5.5	41.4
Q1	187,408	218,912	245,071	272,560	303,281	346,603	495,215	581,709	14.3	42.9	17.5
Holiday	147,940	182,957	200,440	224,834	224,877	270,099	376,198	377,566	20.1	39.3	0.4
Business	25,432	31,082	41,132	40,867	52,337	51,826	93,002	172,160	-1.0	79.5	85.1
Others	14,036	4,873	3,499	6,859	26,067	24,678	26,015	31,983	-5.3	5.4	22.9
Q2	155,878	187,758	200,182	239,066	256,048	320,926	432,327	500,251	25.3	34.7	15.7
Holiday	111,187	151,740	161,187	189,202	180,202	237,317	292,733	278,289	31.7	23.4	-4.9
Business	25,356	31,060	36,056	45,131	51,569	60,653	116,753	190,599	17.6	92.5	63.2
Others	19,335	4,958	2,939	4,733	24,277	22,956	22,841	31,363	-5.4	-0.5	37.3
Q3	167,096	193,961	217,489	265,480	274,857	359,191	464,217	485,967	30.7	29.2	4.7
Holiday	120,170	158,673	179,270	212,618	201,163	265,053	312,737	267,790	31.8	18.0	-14.4
Business	27,198	29,990	35,908	47,617	49,927	70,333	130,431	182,073	40.9	85.4	39.6
Others	19,728	5,298	2,311	5,245	23,767	23,805	21,049	36,104	0.2	-11.6	71.5
Q4	206,202	235,746	255,058	283,928	330,054	383,113	532,014	503,980	16.1	38.9	-5.3
Holiday	153,129	200,165	213,129	229,527	247,462	305,572	361,642	313,437	23.5	18.3	-13.3
Business	29,436	30,641	40,236	47,555	53,311	57,002	143,238	152,810	6.9	151.3	6.7
Others	23,637	4,940	1,693	6,846	29,281	20,539	27,134	37,733	-29.9	32.1	39.1



Int'l Tourist Departures from Phnom Penh International Airport (PNH) by Months in 2012 - 2019

Months	Int'l Tourist Departures									Change (%)		
	2012	2013	2014	2015	2016	2017	2018	2019	17/16	18/17	2019*/18	
Q1	193,993	231,907	234,594	285,257	302,827	355,700	467,619	546,355	17.5	31.5	16.8	
January	70,533	79,240	80,190	97,780	107,103	129,836	157,081	204,007	21.2	21.0	29.9	
February	59,870	73,885	75,128	95,250	100,297	107,684	160,252	165,146	7.4	48.8	3.1	
March	63,590	78,782	79,276	92,227	95,427	118,180	150,286	177,202	23.8	27.2	17.9	
Q2	167,732	195,706	198,771	243,248	257,965	320,714	430,803	470,545	24.3	34.3	9.2	
April	58,895	67,214	68,184	83,651	86,856	111,398	147,014	160,865	28.3	32.0	9.4	
May	52,543	65,861	67,435	82,458	85,650	104,140	143,483	160,604	21.6	37.8	11.9	
June	56,294	62,631	63,152	77,139	85,459	105,176	140,306	149,076	23.1	33.4	6.3	
Q3	163,927	200,275	205,800	260,703	275,775	346,284	453,104	507,628	25.6	30.8	12.0	
July	54,794	66,601	67,864	86,639	90,880	114,954	144,978	163,968	26.5	26.1	13.1	
August	61,592	73,082	74,643	98,306	97,986	125,664	164,045	178,952	28.2	30.5	9.1	
September	47,541	60,592	63,293	75,758	86,909	105,666	144,081	164,708	21.6	36.4	14.3	
Q4	198,206	225,834	241,036	271,166	305,142	350,032	487,313	523,354	14.7	39.2	7.4	
October	56,773	62,155	66,291	81,420	89,509	113,079	151,572	156,451	26.3	34.0	3.2	
November	65,685	78,275	84,093	94,521	101,555	120,314	160,222	177,026	18.5	33.2	10.5	
December	75,748	85,404	90,652	95,225	114,078	116,639	175,519	189,877	2.2	50.5	8.2	
Total	723,858	853,722	880,201	1,060,374	1,141,709	1,372,730	1,838,839	2,047,882	20.2	34.0	11.4	



SECTION II

**SIEM REAP INTERNATIONAL
AIRPORT**

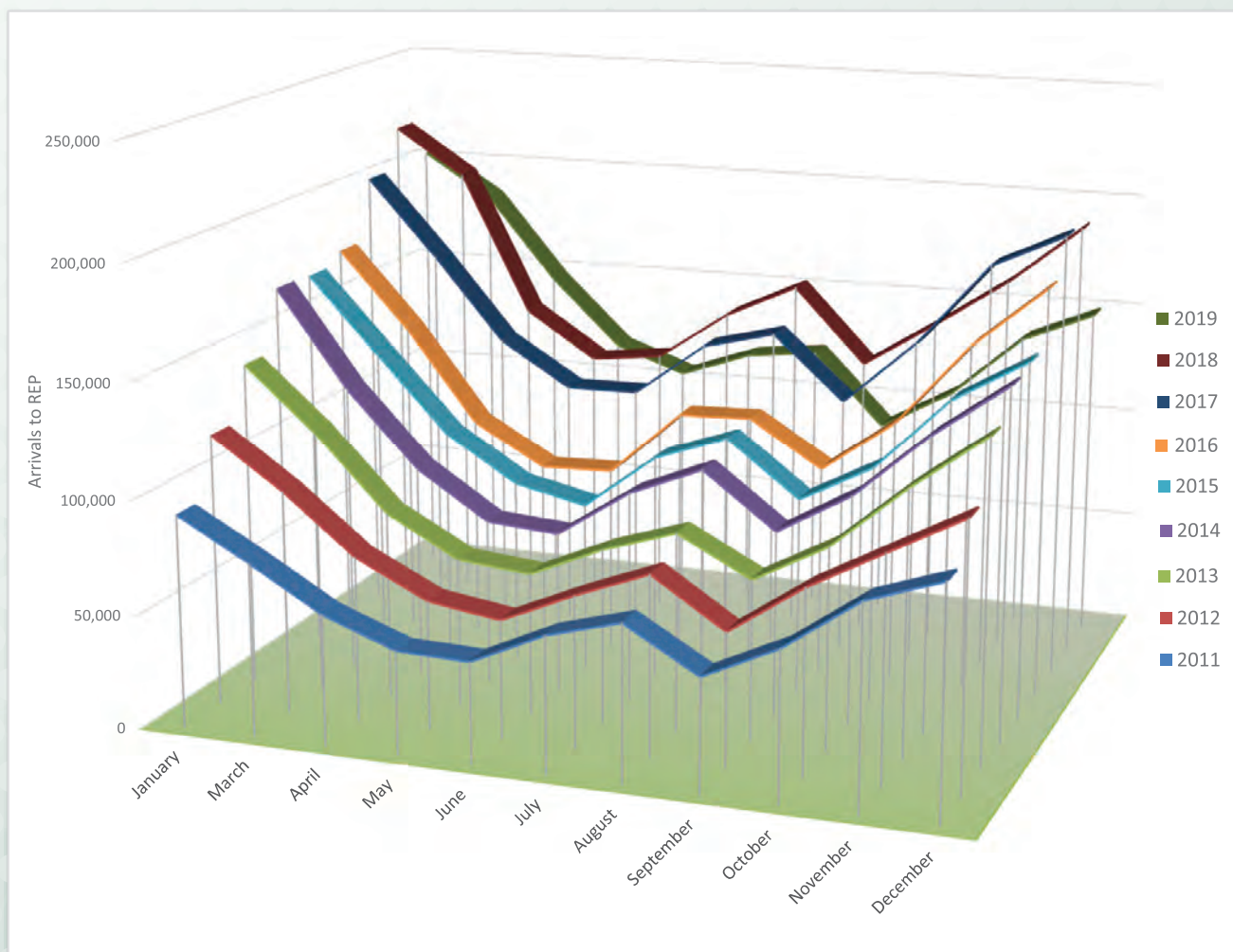


Num Plea Eye

International Tourist Arrivals to Siem Reap International Airport (REP) by Months in 2011 - 2019

(by Air only)

Months	2011	2012	2013	2014	2015	2016	2017	2018	2019	Change (%)		
										17/16	18/17	2019*18
Q1	256,871	326,348	392,248	453,898	460,908	479,395	552,477	631,444	583,879	15.2	14.3	-7.5
January	93,276	119,543	142,661	169,494	168,539	173,825	201,347	219,868	203,270	15.8	9.2	-7.5
February	87,806	109,026	134,465	157,439	157,436	165,871	184,112	211,920	197,172	11.0	15.1	-7.0
March	75,789	97,779	115,122	126,965	134,933	139,699	167,018	199,656	183,437	19.6	19.5	-8.1
Q2	147,038	181,245	210,297	238,033	258,363	262,276	351,907	375,060	367,474	34.2	6.6	-2.0
April	57,187	72,399	82,489	93,885	101,669	99,012	130,003	137,357	146,195	31.3	5.7	6.4
May	45,395	56,762	65,375	73,215	81,837	81,096	110,706	116,930	116,193	36.5	5.6	-0.6
June	44,456	52,084	62,433	70,933	74,857	82,168	111,198	120,773	105,086	35.3	8.6	-13.0
Q3	177,756	203,445	234,051	279,983	298,287	315,794	393,967	425,995	325,048	24.8	8.1	-23.7
July	59,467	66,348	76,571	92,371	99,708	111,266	135,281	142,832	116,564	21.6	5.6	-18.4
August	68,484	78,944	87,040	105,762	111,396	112,271	143,405	158,022	120,337	27.7	10.2	-23.8
September	49,805	58,153	70,440	81,850	87,183	92,257	115,281	125,141	88,147	25.0	8.6	-29.6
Q4	253,507	294,461	344,685	383,779	397,409	449,574	522,336	507,051	388,964	16.2	-2.9	-23.3
October	65,363	80,471	88,072	100,721	104,503	116,182	144,315	145,818	106,264	24.2	1.0	-27.1
November	88,410	98,245	115,979	129,637	136,952	153,090	181,471	167,666	134,561	18.5	-7.6	-19.7
December	99,734	115,745	140,634	153,421	155,954	180,302	196,550	193,567	148,139	9.0	-1.5	-23.5
Total	835,172	1,005,499	1,181,281	1,355,693	1,414,967	1,507,039	1,820,687	1,939,550	1,665,365	20.8	6.5	-14.1

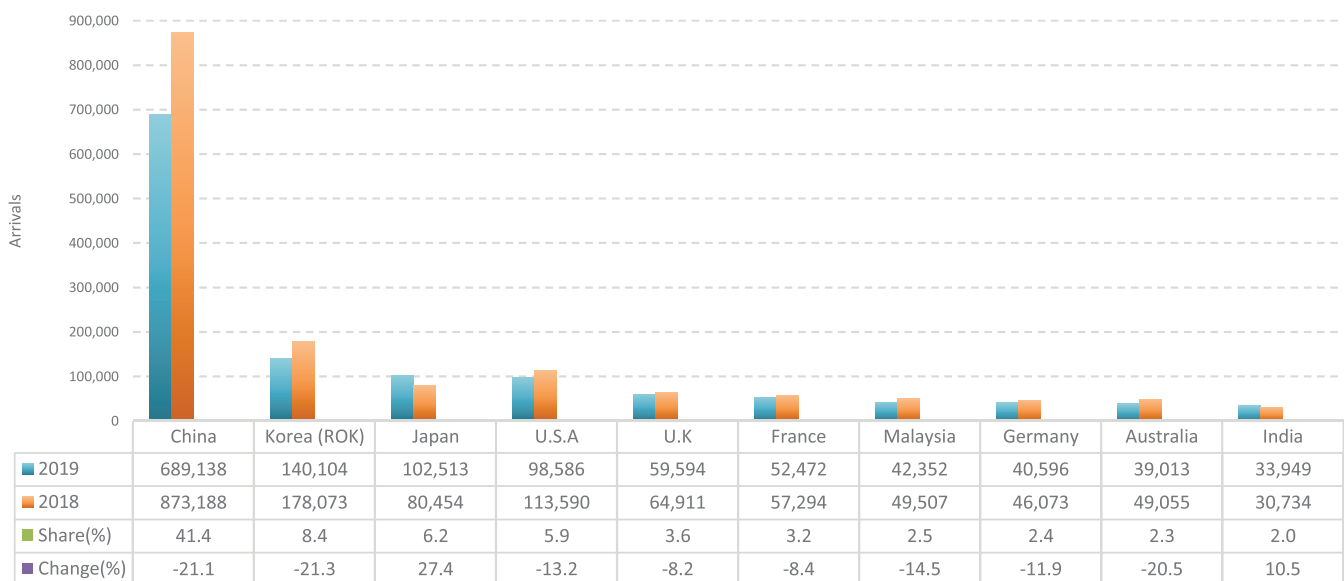


International Tourist Arrivals to Siem Reap International Airport (REP) by Country of Residence in 2019

(by Air Only)

Regions Country of Residence	2019												Total	Share (%) 2019*
	Jan	Feb	Mar	Apr	May	Jun	Jul	Aug	Sep	Oct	Nov	Dec		
Grand Total	203,270	197,172	183,437	146,195	116,193	105,086	116,564	120,337	88,147	106,264	134,561	148,139	1,665,365	100.0
Americas	20,195	16,442	16,073	11,668	8,626	9,564	9,795	8,016	6,692	10,235	16,147	17,468	150,921	9.1
North America	16,468	13,494	13,709	10,074	7,315	8,752	8,805	5,356	5,684	8,854	13,906	15,626	128,043	7.7
Canada	2,980	2,782	2,832	1,482	1,292	952	1,047	786	880	1,556	2,622	2,248	21,459	1.3
Mexico	645	334	702	726	472	582	962	322	651	788	910	904	7,998	0.5
United States of America	12,843	10,378	10,175	7,866	5,551	7,218	6,796	4,248	4,153	6,510	10,374	12,474	98,586	5.9
Central America	101	44	65	73	35	25	107	22	49	88	48	38	695	0.0
Costa Rica	93	42	56	49	30	21	41	18	37	83	43	30	543	0.0
Honduras	5	1	4	21	5	1	3	0	3	4	4	3	54	0.0
Jamaica	3	1	5	3	0	3	63	4	9	1	1	5	98	0.0
South America	3,575	2,881	2,282	1,511	1,252	769	868	2,624	950	1,275	2,181	1,776	21,944	1.3
Argentina	907	617	471	309	212	123	126	87	151	202	400	303	3,908	0.2
Brazil	1,356	903	856	534	392	123	177	155	123	405	1,007	923	6,954	0.4
Chile	573	881	302	226	259	144	113	1,830	252	123	175	161	5,039	0.3
Colombia	430	178	153	251	163	236	236	197	208	321	371	249	2,993	0.2
Ecuador	37	38	39	24	26	20	44	33	24	50	46	28	409	0.0
Peru	132	88	130	63	71	81	81	201	153	87	131	79	1,297	0.1
Uruguay	123	159	316	97	109	22	77	32	28	69	31	22	1,085	0.1
Venezuela	17	17	15	7	20	20	14	89	11	18	20	11	259	0.0
Other America	51	23	17	10	24	18	15	14	9	18	12	28	239	0.0
Africa	347	275	296	236	230	189	222	272	277	218	228	603	3,393	0.2
North Africa	77	47	46	21	30	21	75	90	36	28	34	42	547	0.0
Morocco	51	36	32	12	17	15	57	83	24	18	27	26	398	0.0
Sudan	7	1	2	0	1	5	0	1	5	3	4	5	34	0.0
Tunisia	19	10	12	9	12	1	18	6	7	7	3	11	115	0.0
Subsaharan Africa	255	219	243	203	192	161	141	177	239	190	182	553	2,755	0.2
Cameroon	2	3	3	4	2	0	1	3	29	0	8	1	56	0.0
Congo	0	0	3	0	1	1	0	0	0	0	0	0	5	0.0
Ghana	1	3	2	4	4	0	3	1	3	15	2	1	39	0.0
Kenya	10	9	5	2	4	7	2	19	29	16	11	23	137	0.0
Liberia	0	2	1	0	1	0	0	1	1	1	1	3	11	0.0
Nigeria	4	1	1	0	4	2	3	1	4	0	1	7	28	0.0
South Africa	220	198	220	149	173	141	127	126	163	147	147	491	2,302	0.1
Tanzania	4	1	0	2	3	5	2	1	2	5	3	12	40	0.0
Uganda	8	0	5	41	0	3	1	25	4	2	5	4	98	0.0
Zimbabwe	6	2	3	1	0	2	2	0	4	4	4	11	39	0.0
Other Africa	15	9	7	12	8	7	6	5	2	0	12	8	91	0.0
Middle East	304	115	95	81	54	112	71	100	98	61	273	83	1,447	0.1
Egypt	37	24	21	20	13	13	7	15	55	16	45	28	294	0.0
Iraq	4	10	6	7	2	8	6	34	0	6	0	4	87	0.0
Jordan	20	24	11	3	11	29	14	14	4	7	21	15	173	0.0
Kuwait	10	9	6	7	1	3	0	6	4	9	7	9	71	0.0
Oman	9	5	8	8	2	17	8	2	1	3	15	0	78	0.0
Palestine	0	1	0	1	1	3	2	0	0	1	3	0	12	0.0
Qatar	1	2	4	0	3	0	2	2	0	0	0	2	16	0.0
Saudi Arabia	9	12	10	9	3	15	9	12	5	7	3	7	101	0.0
Syria	7	11	10	8	13	8	4	4	6	5	7	3	86	0.0
United Arab Emirates	181	8	6	5	2	3	8	6	7	2	162	6	396	0.0
Yemen	8	4	10	5	3	11	10	4	13	5	3	3	79	0.0
Other Middle East	18	5	3	8	0	2	1	1	3	0	7	6	54	0.0

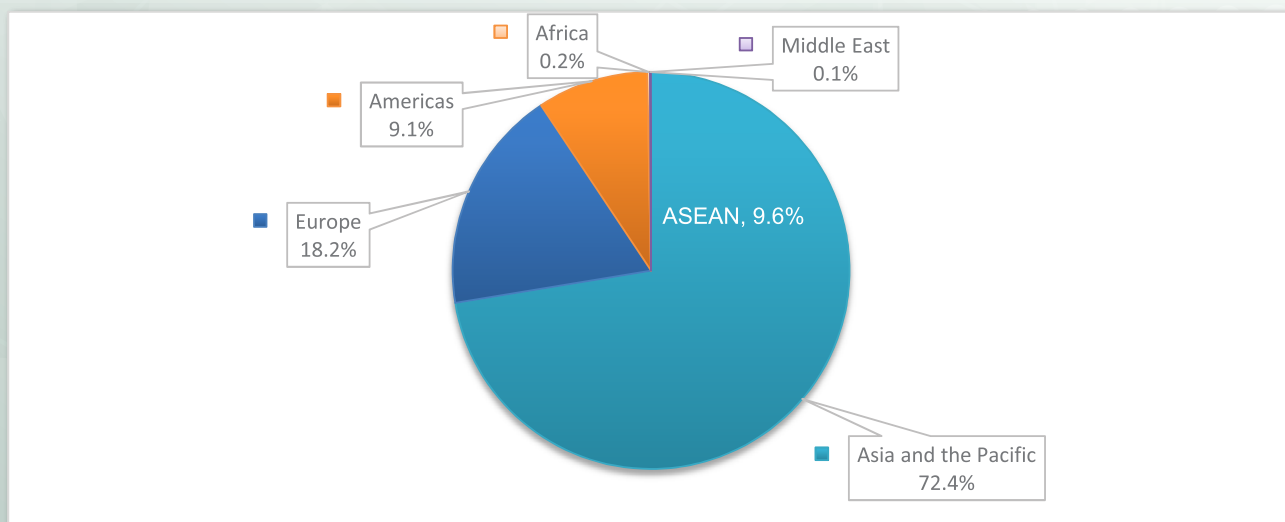
REP Int'l Airport: Top Ten Generating Markets in 2019



International Tourist arrivals to Siem Reap International Airport by Regions in 2019

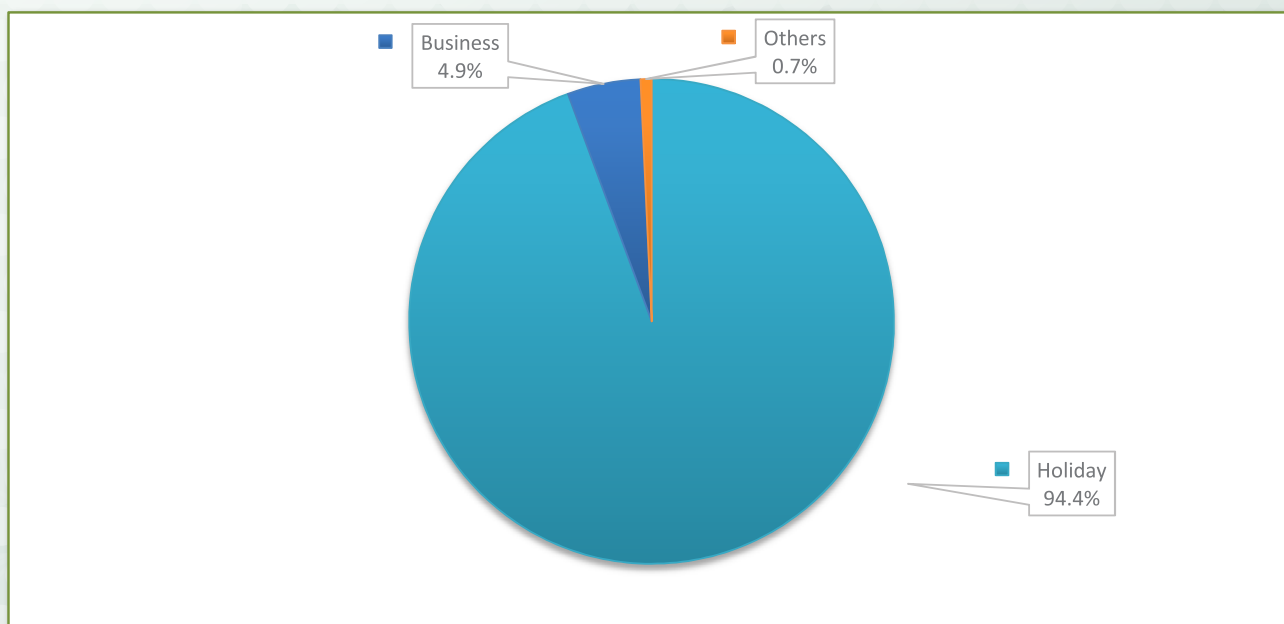
Months	Asia and the Pacific		Europe	Americas	Africa	Middle East	Total
		ASEAN					
Q1	427,226	38,212	102,511	52,710	918	514	583,879
January	146,415	12,159	36,009	20,195	347	304	203,270
February	146,330	12,584	34,010	16,442	275	115	197,172
March	134,481	13,469	32,492	16,073	296	95	183,437
Q2	290,506	43,373	46,208	29,858	655	247	367,474
April	112,280	15,967	21,930	11,668	236	81	146,195
May	94,886	10,793	12,397	8,626	230	54	116,193
June	83,340	16,613	11,881	9,564	189	112	105,086
Q3	234,254	37,124	65,251	24,503	771	269	325,048
July	84,505	14,595	21,971	9,795	222	71	116,564
August	83,257	11,523	28,692	8,016	272	100	120,337
September	66,492	11,006	14,588	6,692	277	98	88,147
Q4	253,761	40,630	89,887	43,850	1,049	417	388,964
October	73,395	12,366	22,355	10,235	218	61	106,264
November	82,157	14,144	35,756	16,147	228	273	134,561
December	98,209	14,120	31,776	17,468	603	83	148,139
Total	1,205,747	159,339	303,857	150,921	3,393	1,447	1,665,365
share (%)	72.4%	9.6%	18.2%	9.1%	0.2%	0.1%	100.0%

Note: 10 countries of ASEAN were included in Asia and the Pacific.



International Tourist Arrivals to Siem Reap International Airport by Purposes of Visit in 2012 - 2019

Purposes of Visit	Int'l tourist arrivals									Change (%)		
	2012	2013	2014	2015	2016	2017	2018	2019	17/16	18/17	2019*/18	
Total	1,005,499	1,181,281	1,355,693	1,414,967	1,507,039	1,820,687	1,939,550	1,665,365	20.8	6.5	-14.1	
Holiday	983,389	1,170,158	1,332,689	1,375,949	1,477,697	1,781,749	1,896,171	1,571,978	20.6	6.4	-17.1	
Business	6,929	7,385	13,840	12,624	15,801	21,404	32,886	81,271	35.5	53.6	147.1	
Others	15,181	3,738	9,164	26,394	13,541	17,534	10,493	12,116	29.5	-40.2	15.5	
Q1	326,348	392,248	453,898	460,908	479,395	552,477	631,444	583,879	15.2	14.3	-7.5	
Holiday	322,604	389,432	450,004	454,127	469,446	542,691	621,805	560,278	15.6	14.6	-9.9	
Business	1,672	1,959	2,380	2,300	4,303	4,186	6,500	20,901	-2.7	55.3	221.6	
Others	2,072	857	1,514	4,481	5,646	5,600	3,139	2,700	-0.8	-43.9	-14.0	
Q2	181,245	210,297	238,033	258,363	262,276	351,907	375,060	367,474	34.2	6.6	-2.0	
Holiday	176,445	207,738	232,845	245,054	255,855	340,275	365,921	342,624	33.0	7.5	-6.4	
Business	1,682	1,719	3,265	4,683	4,261	6,138	6,520	22,464	44.1	6.2	244.5	
Others	3,118	840	1,923	8,626	2,160	5,494	2,619	2,386	154.4	-52.3	-8.9	
Q3	203,445	234,051	279,983	298,287	315,794	393,967	425,995	325,048	24.8	8.1	-23.7	
Holiday	197,682	231,376	273,682	292,352	310,173	385,131	416,018	299,654	24.2	8.0	-28.0	
Business	1,729	1,864	3,689	2,430	3,552	5,859	7,747	22,506	64.9	32.2	190.5	
Others	4,034	811	2,612	3,505	2,069	2,977	2,230	2,888	43.9	-25.1	29.5	
Q4	294,461	344,685	383,779	397,409	449,574	522,336	507,051	388,964	16.2	-2.9	-23.3	
Holiday	286,658	341,612	376,158	384,416	442,223	513,652	492,427	369,422	16.2	-4.1	-25.0	
Business	1,846	1,843	4,506	3,211	3,685	5,221	12,119	15,400	41.7	132.1	27.1	
Others	5,957	1,230	3,115	9,782	3,666	3,463	2,505	4,142	-5.5	-27.7	65.3	



International Tourist Arrivals to Siem Reap Angkor by Months in 2012 - 2019

(by all means of transportation)

Months	2012	2013	2014	2015	2016	2017	2018	2019	Change (%)			
									16/15	17/16	18/17	2019*/18
Q1	639,874	694,729	778,737	688,994	702,754	764,405	858,580	787,900	2.0	8.8	12.3	-8.2
January	224,145	248,614	286,331	245,491	248,563	287,154	294,813	271,050	1.3	15.5	2.7	-8.1
February	217,132	231,369	262,226	237,729	246,212	251,900	295,389	273,259	3.6	2.3	17.3	-7.5
March	198,597	214,746	230,180	205,774	207,979	225,351	268,378	243,591	1.1	8.4	19.1	-9.2
Q2	418,783	427,546	460,807	416,686	392,928	468,991	498,381	456,543	-5.7	19.4	6.3	-8.4
April	179,778	166,451	191,102	174,187	146,942	181,220	192,412	185,405	-15.6	23.3	6.2	-3.6
May	121,799	135,066	143,673	127,815	125,947	147,011	155,196	144,536	-1.5	16.7	5.6	-6.9
June	117,206	126,029	126,032	114,684	120,039	140,760	150,773	126,602	4.7	17.3	7.1	-16.0
Q3	428,556	451,678	501,637	441,246	472,550	519,876	544,608	418,070	7.1	10.0	4.8	-23.2
July	143,464	159,244	165,895	154,642	168,730	182,632	185,878	149,269	9.1	8.2	1.8	-19.7
August	163,502	151,449	183,140	166,098	172,636	192,403	201,865	158,124	3.9	11.5	4.9	-21.7
September	121,590	140,985	152,602	120,506	131,184	144,841	156,865	110,677	8.9	10.4	8.3	-29.4
Q4	576,123	663,363	609,756	577,937	637,042	704,010	689,246	543,184	10.2	10.5	-2.1	-21.2
October	159,067	196,263	147,737	154,208	166,199	187,560	188,474	141,494	7.8	12.9	0.5	-24.9
November	190,614	214,731	212,203	200,512	219,917	249,231	233,125	193,260	9.7	13.3	-6.5	-17.1
December	226,442	252,369	249,816	223,217	250,926	267,219	267,647	208,430	12.4	6.5	0.2	-22.1
Total	2,063,336	2,237,316	2,350,937	2,124,863	2,205,274	2,457,282	2,590,815	2,205,697	3.8	11.4	5.4	-14.9

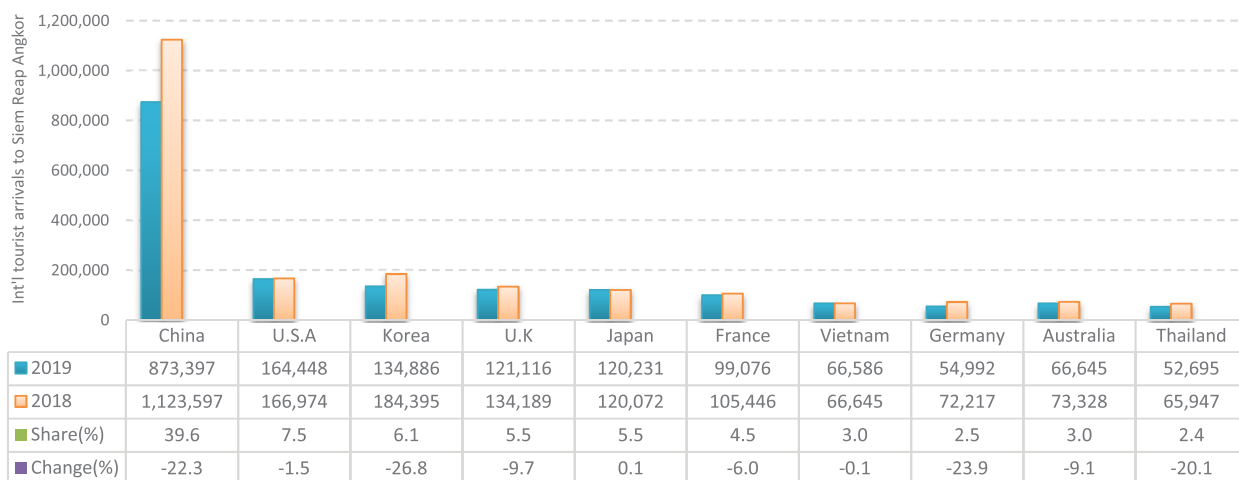
International Tourist Arrivals to Siem Reap Angkor by Mode of Transport in 2014 - 2019

(by all means of transport)

Mode of Transport	2014	2015	2016	2017	2018	2019	Change (%)		
							17/16	18/17	2019*/18
Air	1,611,076	1,623,156	1,701,569	2,000,168	2,185,731	1,815,953	17.5	9.3	-16.9
International Flight	1,355,693	1,414,967	1,512,186	1,752,367	1,939,548	1,665,365	15.9	10.7	-14.1
Local Flight	255,383	208,189	189,383	247,801	246,183	150,588	30.8	-0.7	-38.8
Land	728,647	487,666	491,747	444,260	395,812	386,711	-9.7	-10.9	-2.3
Phnom Penh	273,742	163,511	171,764	161,173	149,148	150,753	-6.2	-7.5	1.1
Poi Pet	444,190	314,435	314,587	274,093	235,828	229,007	-12.9	-14.0	-2.9
Oddar Meanchey	10,715	9,720	5,396	8,994	10,836	6,951	66.7	20.5	-35.9
Waterways	11,214	14,041	11,958	12,854	9,272	3,033	7.5	-27.9	-67.3
Phnom Penh	5,557	6,127	5,179	5,142	2,899	0	-0.7	-43.6	-100.0
Battambang	5,657	7,914	6,779	7,712	6,373	3,033	13.8	-17.4	-52.4
Total	2,350,937	2,124,863	2,205,274	2,457,282	2,590,815	2,205,697	11.4	5.4	-14.9

Siem Reap Angkor: Top Ten Arrivals in 2019

(by all means of transport)



SECTION III

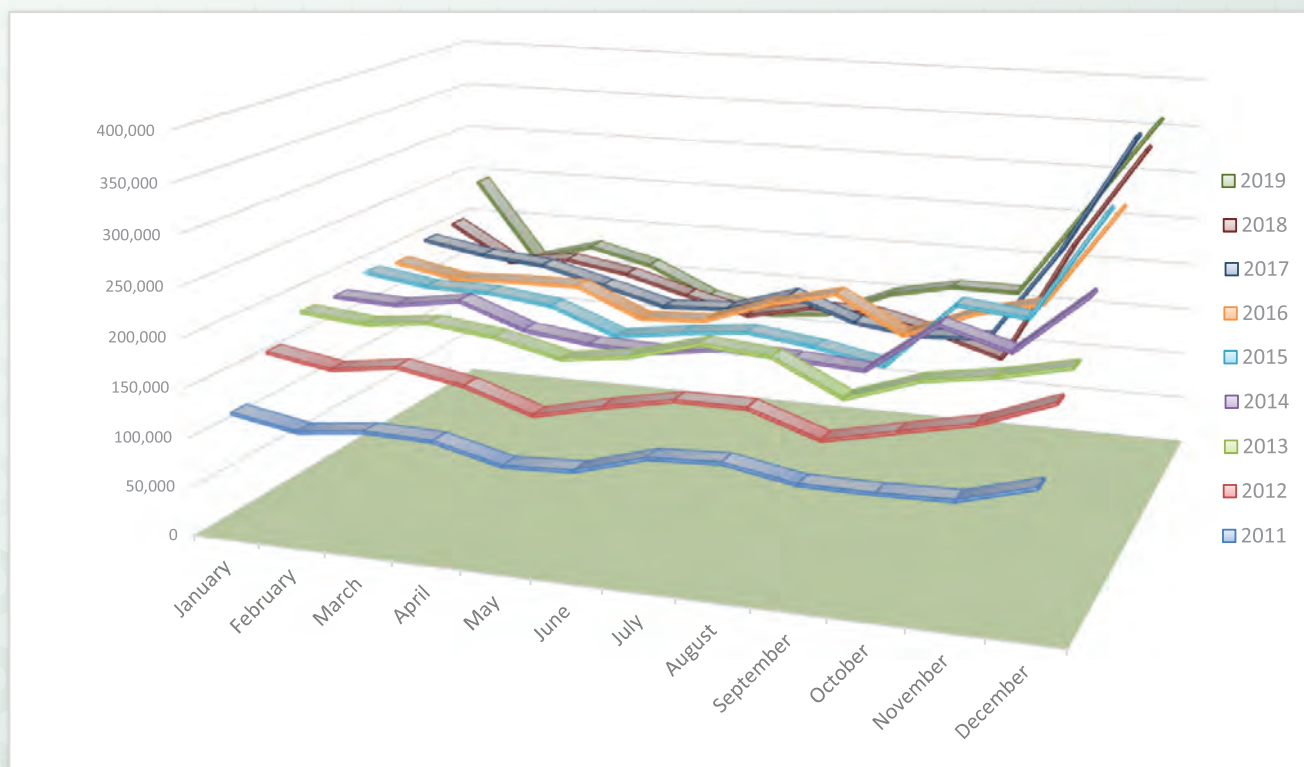
INTERNATIONAL BORDER CHECK POINTS



Num Banh Chok Samlor Khmer

International Tourist Arrivals to Cambodia by Land and Waterways in 2011 - 2019

Months	2011	2012	2013	2014	2015	2016	2017	2018	2019	Change (%)		
										17/16	18/17	2019*/18
Q1	351,038	481,454	560,912	568,953	574,368	557,440	581,486	553,621	578,731	4.3	-4.8	4.5
January	122,290	164,758	188,896	188,115	198,221	193,379	203,603	207,686	243,800	5.3	2.0	17.4
February	110,491	153,722	182,307	185,195	188,452	180,697	191,992	168,974	158,210	6.3	-12.0	-6.4
March	118,257	162,974	189,709	195,643	187,695	183,364	185,891	176,961	176,721	1.4	-4.8	-0.1
Q2	319,618	424,319	522,472	495,231	496,725	498,666	475,529	443,916	405,796	-4.6	-6.6	-8.6
April	116,367	151,022	181,652	171,370	179,665	184,121	169,134	165,872	160,720	-8.1	-1.9	-3.1
May	99,989	128,822	165,860	162,870	153,745	155,261	151,455	147,410	130,075	-2.5	-2.7	-11.8
June	103,262	144,475	174,960	160,991	163,315	159,284	154,940	130,634	115,001	-2.7	-15.7	-12.0
Q3	364,473	450,347	536,600	501,218	481,113	545,333	472,337	419,575	435,970	-13.4	-11.2	3.9
July	123,185	157,877	194,112	170,740	170,686	183,026	176,252	145,381	121,326	-3.7	-17.5	-16.5
August	126,763	157,899	188,159	167,554	161,820	199,738	152,307	145,025	150,055	-23.7	-4.8	3.5
September	114,525	134,571	154,329	162,924	148,607	162,569	143,778	129,169	164,589	-11.6	-10.2	27.4
Q4	366,326	506,104	572,523	663,880	747,024	705,906	760,067	687,095	786,100	7.7	-9.6	14.4
October	114,368	150,051	178,350	214,541	217,320	190,674	147,852	108,241	164,256	-22.5	-26.8	51.8
November	116,124	164,649	189,328	194,376	209,962	207,847	245,574	236,816	262,156	18.2	-3.6	10.7
December	135,834	191,404	204,845	254,963	319,742	307,385	366,641	342,038	359,688	19.3	-6.7	5.2
Total	1,401,455	1,862,224	2,192,507	2,229,282	2,299,230	2,307,345	2,289,419	2,104,207	2,206,597	-0.8	-8.1	4.9

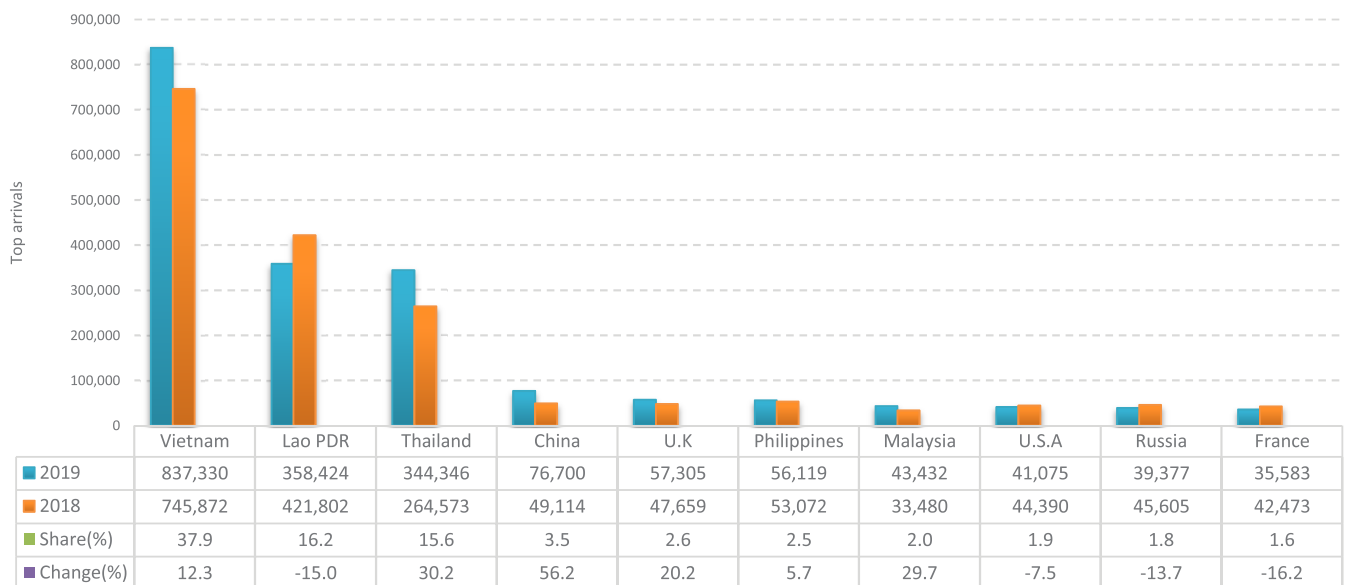


Int'l Tourist Arrivals to Cambodia by Land and Waterways by Country of Residence in 2019

(by Land and Waterways)

Regions Country of Residence	2019												Total	Share (%) 2019*
	Jan	Feb	Mar	Apr	May	Jun	Jul	Aug	Sep	Oct	Nov	Dec		
Grand Total	243,800	158,210	176,721	160,720	130,075	115,001	121,326	150,055	164,589	164,256	262,156	359,688	2,206,597	100.0
Americas	10,414	7,528	8,922	3,738	3,740	2,180	2,499	2,897	2,530	3,399	7,460	8,675	63,982	2.9
North America	9,295	6,808	7,859	3,243	3,350	1,862	2,217	2,540	2,197	3,122	6,995	8,036	57,524	2.6
Canada	2,645	2,119	2,583	794	750	314	609	462	289	734	2,025	1,724	15,048	0.7
Mexico	311	99	36	171	79	2	55	43	9	65	133	398	1,401	0.1
United States of America	6,339	4,590	5,240	2,278	2,521	1,546	1,553	2,035	1,899	2,323	4,837	5,914	41,075	1.9
Central America	33	31	25	57	16	10	13	13	39	12	17	11	277	0.0
Costa Rica	7	8	13	52	12	7	4	7	29	8	7	8	162	0.0
Honduras	7	9	4	1	2	1	6	2	2	2	3	2	41	0.0
Jamaica	19	14	8	4	2	2	3	4	8	2	7	1	74	0.0
South America	1,045	668	1,015	431	369	306	264	328	293	259	421	613	6,012	0.3
Argentina	367	183	115	123	69	32	60	69	47	70	112	143	1,390	0.1
Brazil	324	195	208	128	79	123	67	76	156	63	107	300	1,826	0.1
Chile	185	209	158	72	80	53	80	62	33	51	109	71	1,163	0.1
Colombia	67	12	65	43	34	31	23	50	39	38	32	61	495	0.0
Ecuador	18	4	38	8	4	7	4	11	1	9	15	4	123	0.0
Peru	28	39	36	19	10	43	11	41	8	17	36	16	304	0.0
Uruguay	34	22	392	32	79	15	11	14	4	9	7	13	632	0.0
Venezuela	22	4	3	6	14	2	8	5	5	2	3	5	79	0.0
Other America	41	21	23	7	5	2	5	16	1	6	27	15	169	0.0
Africa	925	212	270	219	242	261	266	306	233	279	485	757	4,455	0.2
North Africa	401	34	22	13	12	16	15	16	11	16	16	22	594	0.0
Morocco	10	12	12	6	4	4	11	13	2	12	9	12	107	0.0
Sudan	3	5	0	0	2	9	0	0	2	0	0	2	25	0.0
Tunisia	388	17	10	7	6	3	4	3	7	2	7	8	462	0.0
Subsaharan Africa	515	175	246	203	220	244	245	283	220	248	462	725	3,786	0.2
Cameroon	13	4	4	5	1	3	7	8	6	6	8	5	70	0.0
Congo	15	12	2	15	11	1	16	11	13	4	204	37	341	0.0
Ghana	0	4	11	5	3	1	4	6	3	2	8	2	49	0.0
Kenya	4	2	6	6	2	12	3	8	11	3	3	14	74	0.0
Liberia	8	10	14	13	14	26	25	20	20	27	19	24	220	0.0
Nigeria	12	6	2	6	4	12	10	5	8	5	13	9	92	0.0
South Africa	435	123	197	146	176	177	167	202	147	185	185	617	2,757	0.1
Tanzania	16	3	2	4	2	3	0	6	1	2	4	3	46	0.0
Uganda	6	6	2	2	5	9	10	11	8	12	14	10	95	0.0
Zimbabwe	6	5	6	1	2	0	3	6	3	2	4	4	42	0.0
Other Africa	9	3	2	3	10	1	6	7	2	15	7	10	75	0.0
Middle East	197	33	128	74	64	67	63	87	100	86	79	148	1,126	0.1
Egypt	24	1	21	19	17	8	21	19	12	16	26	77	261	0.0
Iraq	0	2	4	1	0	4	3	0	24	23	5	10	76	0.0
Jordan	3	6	16	15	8	7	5	8	12	11	7	6	104	0.0
Kuwait	11	6	11	11	14	27	9	22	21	10	7	28	177	0.0
Oman	21	5	11	7	3	4	5	3	8	6	9	3	85	0.0
Palestine	2	4	2	2	5	0	2	3	2	2	4	1	29	0.0
Qatar	3	2	5	5	2	1	6	4	3	4	2	10	47	0.0
Saudi Arabia	9	4	5	5	0	3	1	4	4	2	6	3	46	0.0
Syria	5	1	47	2	3	1	3	3	4	1	2	4	76	0.0
United Arab Emirates	107	0	4	4	2	10	4	17	5	4	8	4	169	0.0
Yemen	10	1	1	1	0	0	1	1	2	3	1	0	21	0.0
Other Middle East	2	1	1	2	10	2	3	3	3	4	2	2	35	0.0

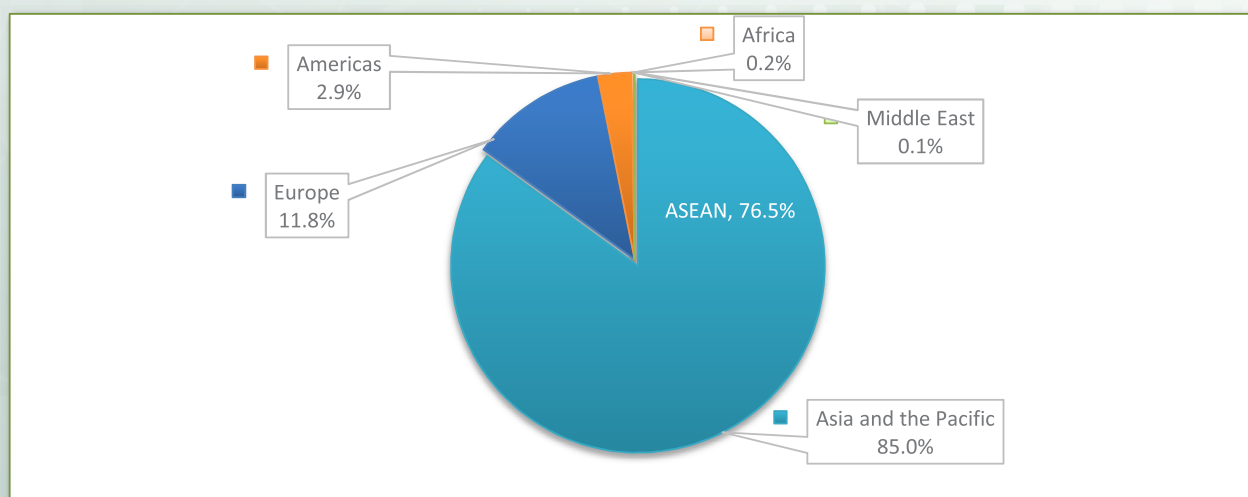
Land and Waterways: Top Ten Generating Markets in 2019



International Tourist Arrivals to Cambodia by Land and Waterways by Regions in 2019

Months	Asia and the Pacific		Europe	Americas	Africa	Middle East	Total
		ASEAN					
Q1	433,849	394,670	116,253	26,864	1,407	358	578,731
January	188,250	169,948	44,014	10,414	925	197	243,800
February	111,422	102,794	39,015	7,528	212	33	158,210
March	134,177	121,928	33,224	8,922	270	128	176,721
Q2	362,007	341,782	33,204	9,658	722	205	405,796
April	139,846	132,781	16,843	3,738	219	74	160,720
May	115,729	107,735	10,300	3,740	242	64	130,075
June	106,432	101,266	6,061	2,180	261	67	115,001
Q3	393,523	367,056	33,466	7,926	805	250	435,970
July	105,944	100,726	12,554	2,499	266	63	121,326
August	133,108	125,066	13,657	2,897	306	87	150,055
September	154,471	141,264	7,255	2,530	233	100	164,589
Q4	686,467	585,266	78,265	19,534	1,521	313	786,100
October	146,719	135,221	13,773	3,399	279	86	164,256
November	226,078	199,261	28,054	7,460	485	79	262,156
December	313,670	250,784	36,438	8,675	757	148	359,688
Total	1,875,846	1,688,774	261,188	63,982	4,455	1,126	2,206,597
share (%)	85.0%	76.5%	11.8%	2.9%	0.2%	0.1%	100.0%

Note: 10 countries of ASEAN were included in Asia and the Pacific.



International Tourist Arrivals to Cambodia by Land and Waterways by Purposes of Visit in 2012 - 2019

Purposes of Visit	Int'l tourist arrivals								Change (%)		
	2012	2013	2014	2015	2016	2017	2018	2019	17/16	18/17	2019*/18
Total	1,862,224	2,192,507	2,229,282	2,299,230	2,307,345	2,289,419	2,104,207	2,206,597	-0.8	-8.1	4.9
Holiday	1,771,277	2,128,206	2,168,574	2,067,243	2,050,563	2,051,311	1,922,541	2,021,898	0.0	-6.3	5.2
Business	53,364	55,426	38,452	105,813	118,854	111,911	109,663	129,693	-5.8	-2.0	18.3
Others	37,583	8,875	22,256	126,174	137,928	126,197	72,003	55,006	-8.5	-42.9	-23.6
Q1	481,454	560,912	568,953	574,368	557,440	581,486	553,621	578,731	4.3	-4.8	4.5
Holiday	455,413	546,558	561,670	511,230	491,564	517,561	504,006	520,774	5.3	-2.6	3.3
Business	10,747	12,264	5,313	22,419	30,450	27,995	25,729	35,176	-8.1	-8.1	36.7
Others	15,294	2,090	1,970	40,719	35,426	35,930	23,886	22,781	1.4	-33.5	-4.6
Q2	424,319	522,472	495,231	496,725	498,666	475,529	443,916	405,796	-4.6	-6.6	-8.6
Holiday	402,093	505,229	482,622	455,609	435,335	415,684	401,470	367,837	-4.5	-3.4	-8.4
Business	13,812	14,447	10,588	26,892	31,088	27,858	27,792	32,759	-10.4	-0.2	17.9
Others	8,414	2,796	2,021	14,224	32,243	31,987	14,654	5,200	-0.8	-54.2	-64.5
Q3	450,347	536,600	501,218	481,113	545,333	472,337	419,575	435,970	-13.4	-11.2	3.9
Holiday	429,512	521,200	486,973	433,764	487,160	418,160	377,723	394,117	-14.2	-9.7	4.3
Business	13,303	13,072	12,023	26,282	27,607	26,853	27,322	37,386	-2.7	1.7	36.8
Others	7,532	2,328	2,222	21,067	30,566	27,324	14,530	4,467	-10.6	-46.8	-69.3
Q4	506,104	572,523	663,880	747,024	705,906	760,067	687,095	786,100	7.7	-9.6	14.4
Holiday	484,259	555,219	637,309	666,640	636,504	699,906	639,342	739,170	10.0	-8.7	15.6
Business	15,502	15,643	10,528	30,220	29,709	29,205	28,820	24,372	-1.7	-1.3	-15.4
Others	6,343	1,661	16,043	50,164	39,693	30,956	18,933	22,558	-22.0	-38.8	19.1

UNIT II

DOMESTIC TOURISM

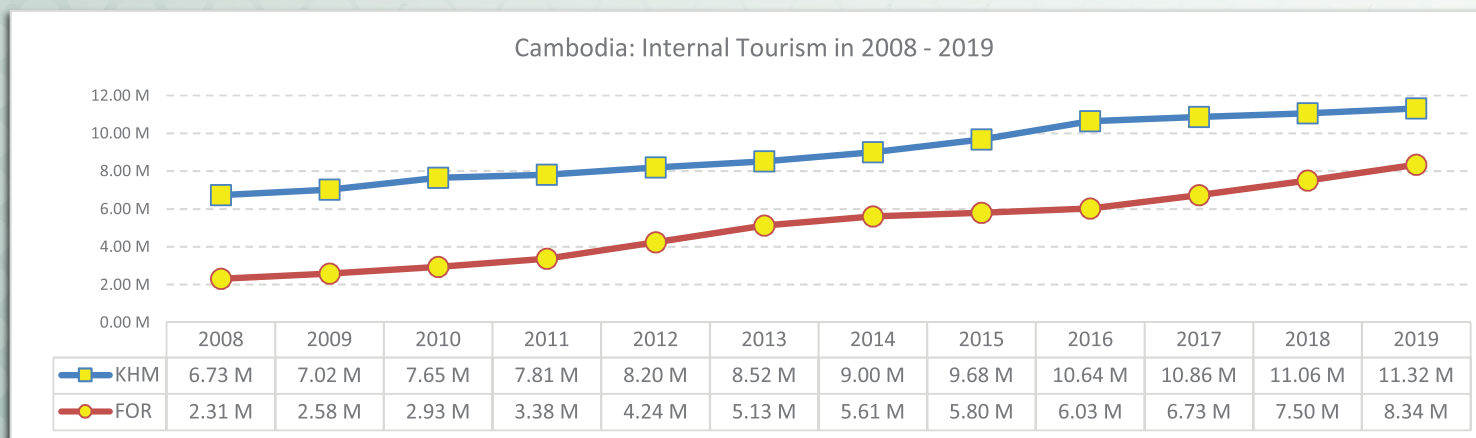


Num Banh Chok Samlor Khmer

Cambodia: Internal Tourism Report in 2015 - 2019

No.	Destinations	2015		2016		2017		2018		2019		Share (%)		Change (%)	
		KHM	FOR	KHM	FOR	KHM	FOR	KHM	FOR	KHM	FOR	2019*		2019*/18	
												KHM	FOR	KHM	FOR
I	1 Phnom Penh	2,273,150	2,650,368	2,538,157	2,806,438	2,656,869	3,144,875	2,354,240	3,610,262	2,381,301	4,404,895	21.0	52.8	1.1	22.0
II	Cultural Zone	3,106,482	2,198,107	3,253,955	2,296,096	3,313,958	2,554,258	3,510,425	2,688,680	2,330,248	2,294,818	20.6	27.5	-33.6	-14.6
	2 Kampong Thom	86,296	27,235	73,825	31,313	87,114	32,136	76,418	36,223	96,491	30,755	0.9	0.4	26.3	-15.1
	3 Oddar Meanchey	47,633	3,851	62,496	2,702	37,125	3,508	42,264	5,027	52,115	3,760	0.5	0.0	23.3	-25.2
	4 Preah Vihear	86,100	42,158	109,260	56,807	103,567	61,332	141,996	56,615	125,033	54,606	1.1	0.7	-11.9	-3.5
	5 Siem Reap	2,886,453	2,124,863	3,008,374	2,205,274	3,086,152	2,457,282	3,249,747	2,590,815	2,056,609	2,205,697	18.2	26.4	-36.7	-14.9
III	Coastal Zone	2,403,570	610,458	3,044,451	643,289	3,139,447	739,884	3,279,025	877,236	3,175,780	1,204,374	28.1	14.4	-3.1	37.3
	6 Preah Sihanouk	1,156,813	362,061	1,648,099	404,939	1,525,286	469,918	1,466,590	581,180	1,343,690	885,792	11.9	10.6	-8.4	52.4
	7 Kampot	683,027	176,435	717,178	156,596	94,223	162,171	165,815	167,735	393,970	176,463	3.5	2.1	137.6	5.2
	8 Kep	428,485	51,008	516,442	53,733	1,266,197	50,619	1,347,524	51,685	1,183,009	64,613	10.5	0.8	-12.2	25.0
	9 Koh Kong	135,245	20,954	162,732	28,021	253,741	57,176	299,096	76,636	255,111	77,506	2.3	0.9	-14.7	1.1
IV	Eco-tourism Zone	720,463	63,261	510,381	66,349	497,651	71,697	559,484	75,096	656,029	81,588	5.8	1.0	17.3	8.6
	10 Kratie	316,482	24,304	67,669	24,350	70,194	24,947	71,636	25,990	74,405	26,878	0.7	0.3	3.9	3.4
	11 Mondul Kiri	129,712	7,253	142,104	8,679	102,590	11,759	117,719	13,276	164,607	14,530	1.5	0.2	39.8	9.4
	12 Rattanak Kiri	156,716	22,596	165,977	23,692	179,274	22,844	197,292	24,917	208,133	25,191	1.8	0.3	5.5	1.1
	13 Stung Treng	117,553	9,108	134,631	9,628	145,593	12,147	172,837	10,913	208,884	14,989	1.8	0.2	20.9	37.3
V	Battambang Zone	646,003	162,893	777,635	119,964	688,051	109,925	740,059	117,920	1,234,166	118,727	10.9	1.4	66.8	0.7
	14 Banteay Meanchey	92,943	4,533	106,007	4,116	117,813	3,187	121,021	4,833	231,299	5,324	2.0	0.1	91.1	10.2
	15 Battambang	501,260	94,448	513,300	96,460	519,835	98,304	567,588	100,744	580,314	101,473	5.1	1.2	2.2	0.7
	16 Pailin	21,913	55,279	129,477	12,749	10,684	1,415	11,203	1,224	58,326	3,919	0.5	0.0	420.6	220.2
	17 Pursat	29,887	8,633	28,851	6,639	39,719	7,019	40,247	11,119	364,227	8,011	3.2	0.1	805.0	-28.0
VI	Others	529,324	114,340	517,502	93,607	568,392	116,849	616,400	128,102	1,541,999	235,330	13.6	2.8	150.2	83.7
	18 Kampong Cham	264,064	28,794	232,620	25,615	278,400	14,819	337,741	15,629	317,153	22,974	2.8	0.3	-6.1	47.0
	19 Kampong Chhnang	22,158	3,394	36,339	4,959	64,048	4,477	32,300	5,092	929,838	114,878	8.2	1.4	2778.8	2156.0
	20 Kampong Speu	22,600	11,937	27,284	13,019	31,443	14,336	26,979	14,923	34,836	15,790	0.3	0.2	29.1	5.8
	21 Kandal	49,116	10,307	35,573	8,251	28,401	10,619	29,480	16,136	30,786	12,311	0.3	0.1	4.4	-23.7
	22 Prey Veng	8,019	2,175	15,115	1,617	20,532	2,567	14,685	8,941	16,399	3,682	0.1	0.0	11.7	-58.8
	23 Svay Rieng	42,742	614	42,955	891	50,845	1,583	62,469	5,107	60,173	6,614	0.5	0.1	-3.7	29.5
	24 Takeo	38,994	10,949	58,627	13,932	36,338	13,466	48,708	14,852	48,004	13,321	0.4	0.2	-1.4	-10.3
	25 Thbong Khmum	81,631	46,170	68,989	25,323	58,385	54,982	64,038	47,422	104,810	45,760	0.9	0.5	63.7	-3.5
	TOTAL	9,678,992	5,799,427	10,642,081	6,025,743	10,864,368	6,737,488	11,059,633	7,497,296	11,319,523	8,339,732	100.0	100.0	2.3	11.2

Note:
KHM: Cambodia Visitors
FOR: Foreign Visitors





Bong Em Ple Lapov

UNIT III

TOURISM SUPPLY



Bong Em Lort

Tourism Supply: Number of Hotels, Guesthouses, Restaurant and Massage in 1997 - 2019

Years	Hotels				Guesthouses				Restaurant		Massage	
	Number	Change (%)	Rooms	Change (%)	Number	Change (%)	Rooms	Change (%)	Number	Chairs	Number	Beds
1997	179		6,989		60		477					
1998	216	20.7	8,247	18.0	147	145.0	1,510	216.6	356	34,589	35	812
1999	221	2.3	9,115	10.5	186	26.5	1,897	25.6	402	35,601	39	854
2000	240	8.6	9,673	6.1	292	57.0	3,233	70.4	458	41,589	42	964
2001	247	2.9	10,804	11.7	370	26.7	3,899	20.6	505	43,786	44	975
2002	267	8.1	11,426	5.8	509	37.6	6,109	56.7	624	45,310	47	984
2003	292	9.4	13,201	15.5	549	7.9	6,497	6.4	695	45,810	52	1,098
2004	299	2.4	14,271	8.1	615	12.0	7,684	18.3	713	51,254	56	1,150
2005	317	6.0	15,465	8.4	684	11.2	9,000	17.1	719	54,210	56	1,150
2006	351	10.7	17,914	15.8	742	8.5	9,166	1.8	747	65,210	53	1,045
2007	395	12.5	20,470	14.3	891	20.1	11,563	26.2	920	77,560	190	1,540
2008	398	0.8	20,678	1.0	925	3.8	12,180	5.3	934	78,563	111	1,030
2009	451	13.3	23,010	11.3	1,018	10.1	14,512	19.1	986	98,520	126	1,854
2010	440	-2.4	24,393	6.0	1,087	6.8	15,321	5.6	1,010	100,758	158	1,985
2011	476	8.2	26,484	8.6	1,142	5.1	16,752	9.3	1,142	103,692	191	2,015
2012	490	2.9	27,117	2.4	1,296	13.5	19,329	15.4	1,156	104,250	195	2,104
2013	545	11.2	29,937	10.4	1,462	12.8	21,286	10.1	1,336	111,320	247	2,213
2014	554	1.7	29,729	-0.7	1,563	6.9	22,256	4.6	1,220	108,158	240	2,156
2015	668	20.6	34,619	16.4	2,229	42.6	28,660	28.8	2,620	125,652	378	2,458
2016	760	13.8	40,160	16.0	2,170	-2.6	32,463	13.3	1,982	117,193	307	2,237
2017	731	-3.8	39,328	-2.1	2,405	10.8	35,228	8.5	2,437	130,885	411	2,779
2018	846	15.7	46,696	18.7	2,313	-3.8	33,819	-4.0	2,199	131,873	286	2,851
2019	1,050	24.1	49,185	5.3	2,705	16.9	35,343	4.5	3,415	167,289	566	4,834

Tourism Service Statistics in 2019

No.	Destinations	Hotels		Guesthouses		Restaurants		Massage	
		No.	Rooms	No.	Rooms	Number	Chairs	Number	Beds
I	1 Phnom Penh	343	14,223	712	10,460	1,091	63,065	187	2,250
II	Cultural Zone	254	15,927	444	6,500	363	21,263	90	845
	2 Kampong Thom	9	393	58	852	77	3,776	8	37
	3 Oddar Meanchey	5	322	37	511	40	1,749	24	71
	4 Preah Vihear	6	238	39	458	50	1,845	8	27
	5 Siem Reap	234	14,974	310	4,679	196	13,893	50	710
III	Coastal Zone	243	10,033	594	6,722	649	25,823	111	793
	6 Preah Sihanouk	133	7,752	216	2,613	301	13,464	66	573
	7 Kampot	63	1,437	221	2,258	202	6,910	26	136
	8 Kep	37	528	61	654	36	1,544	4	20
	9 Koh Kong	10	316	96	1,197	110	3,905	15	64
IV	Eco-tourism Zone	44	1,908	170	2,095	188	7,700	26	184
	10 Kratie	16	661	47	395	60	2,740	11	75
	11 Mondul Kiri	8	364	46	700	39	1,841		
	12 Rattanak Kiri	14	625	36	504	39	500	3	7
	13 Stung Treng	6	258	41	496	50	2,619	12	102
V	Battambang Zone	90	4,066	236	4,102	362	15,566	68	339
	14 Banteay Meanchey	25	942	83	1,477	99	5,205	28	166
	15 Battambang	49	1,866	81	1,416	77	6,080	4	32
	16 Pailin	10	895	26	707	98	1,011	16	68
	17 Pursat	6	363	46	502	88	3,270	20	73
VI	Others	76	3,028	549	5,464	762	33,872	84	423
	18 Kampong Cham	18	326	109	818	103	4,542	27	143
	19 Kampong Chhnang	9	300	57	568	72	3,149	4	20
	20 Kampong Speu	6	206	20	313	113	4,406	10	40
	21 Kandal	3	83	76	999	193	10,776	2	17
	22 Prey Veng	7	159	71	664	92	2,403	8	24
	23 Svay Rieng	25	1,673	62	303	52	3,008	21	117
	24 Takeo	2	40	100	1,007	104	4,004	4	19
	25 Tboung Khmum	6	241	54	792	33	1,584	8	43
	TOTAL	1,050	49,185	2,705	35,343	3,415	167,289	566	4,834

Tourism Supply: Tourism Services

Number of Tour Operators and Travel Agent from 1996 - 2019

Years	Offices			Change (%)
	Head	Branch	Total	
1996	81	35	116	
1997	78	37	115	-0.9
1998	103	34	137	19.1
1999	117	43	160	16.8
2000	140	64	204	27.5
2001	166	70	236	15.7
2002	186	73	259	9.7
2003	186	84	270	4.2
2004	208	94	302	11.9
2005	237	99	336	11.3
2006	277	105	382	13.7
2007	333	118	451	18.1
2008	354	119	473	4.9
2009	372	113	485	2.5
2010	392	115	507	4.5
2011	404	185	589	16.2
2012	457	108	565	-4.1
2013	513	100	613	8.5
2014	505	108	613	0.0
2015	517	115	632	3.1
2016	573	92	665	5.2
2017	595	87	682	2.6
2018	538	99	637	-6.6
2019	666	86	752	18.1

Number of Tourist Guides in 2019

No.	Languages	2019			
		Phnom Penh	Siem Reap	Coastal Zone	National Guides
1	English	374	1659	33	58
2	Japanese	87	833	0	24
3	French	142	318	0	40
4	Chinese	254	1191	5	16
5	Korean	12	257	0	2
6	Thai	15	430	1	5
7	German	54	112	0	6
8	Spanish	30	149	0	4
9	Italian	13	29	0	4
10	Russian	27	81	0	3
11	Vietnamese	81	122	12	7
16	Malay	10	5	0	0
	Total	1,099	5,186	51	169

Hotels classifications by MOT in 2019

Destinations	★ 1 Star		★★ 2 Stars		★★★ 3 Stars		★★★★ 4 Stars		★★★★★ 5 Stars	
	Number	Rooms	Number	Rooms	Number	Rooms	Number	Rooms	Number	Rooms
1 Phnom Penh	7	389	7	422	15	1,446	8	1,434	8	3,451
Cultural Zone										
2 Kampong Thom	2	103								
3 Siem Reap	2	75	2	77	6	310	23	2,375	21	4,545
Coastal Zone										
4 Preah Sihanouk	6	204	2	52	3	206	3	312	5	1,496
5 Kampot	1	40			1	43	2	173	1	564
6 Kep					1	100	1	12	2	34
Eco-tourism Zone										
7 Mondul Kiri	1	47	1	73	3	151				
Battambang Zone										
8 Banteay Meanchey	1	42	1	58						
9 Battambang	3	125	1	56	4	414	1	128		
10 Pursat	1	40			1	144				
Others										
11 Kampong Cham	7	372	3	185						
12 Kandal					2	73				
13 Svay Rieng							1	184		
TOTAL	31	1,437	17	923	36	2,887	39	4,618	37	10,090

Published by: Tourism Statistics Department, Ministry of Tourism.

Sources:

- General Department of Immigration (GDI), Ministry of Interior.
- 25 Provincial and Municipal Tourism Departments.

Compiled by:

Mr. KONG Sopheareak, Researcher and analyst

Mr. CHAK Vorleak, Survey monitor and photographer

Mr. HORTH Vanny, Inbound and outbound tourism statistics

Mr. SENG Sithikun, Survey and domestic tourism statistics

Mr. LENG Daravuth, Survey and data collector

Mr. CHHANN Dimang, Editor and data collector

Mr. RAY Bora, Text editor

Mr. OEUN Channthan, Survey and data entries

Ms. THOEUN Kunthea, Survey and data entries

Mr. LENG Thearithratna, Survey and data entries





CAMBODIA

*Kingdom of Wonder
feel the warmth*

Clean City, Clean Resort, Good Service, Best Hospitality