



MINISTRY OF TOURISM

KINGDOM OF CAMBODIA
NATION RELIGION KING

ANNUAL TOURISM STATISTICS REPORT

2021



Southeast Asia
A DESTINATION FOR EVERY DREAM

**ANNUAL REPORT
ON
TOURISM STATISTICS 2021**

**TOURISM STATISTICS DEPARTMENT
NATIONAL INSTITUTE OF TOURISM
MINISTRY OF TOURISM**

KINGDOM OF CAMBODIA

MINISTRY OF TOURISM

Tourism Statistics Department

No. 3A, Street 169, Sangkat Veal Vong, Khan 7 Makara, Phnom Penh, Cambodia.

Tel.: +855 23 884972 | Fax: +855 23 885003

Email: info@tourism.gov.kh

Website: www.tourism.gov.kh

MESSAGE

Dr. THONG Khon Minister of Tourism



Dear Readers,

On behalf of the Ministry of Tourism of the Kingdom of Cambodia, I have the honor and privilege to convey my heartfelt gratitude to the Royal Government of Cambodia (RGC), under the sound and brilliant leadership of **Samdech Akka Moha Sena Padei Techo HUN Sen, Prime Minister of the Kingdom of Cambodia**, who has been paying close attention in leading, supporting and fostering tourism development by rolling out policies, measures and strategies to accomplish various achievements. I would also like to extend my sincere thanks to all visitors who have chosen the Kingdom of Cambodia as one of the World Class Cultural and Natural Tourism and my special appreciation to relevant stakeholders who have put a lot of effort to bolster tourism businesses in Cambodia.

Under the brand and promotion campaign "**Cambodia – Kingdom of Wonder, Feel the Warmth**", our mission and commitment are to continue developing Cambodia as safe, warm, clean, and green with trust and confidence, the right price, good service quality and sustainable tourism, responsible and inclusive tourist destinations of the UNESCO world heritage sites, gastronomy, eco-tourism, and sports tourism, etc. These tourist destinations include Angkor Wat temple, Preah Vihear temple, Sambor Prei Kuk temple and thousands of temples, tangible and intangible patrimony, beautiful nature and beaches, the dynamic Mekong river, Khmer culinary arts, and most importantly the genuine smiles of Cambodian people.

World tourism has been devastated by an unprecedented global pandemic of COVID-19, and Cambodia is no exception. In 2021, Cambodia received only 200 thousand international tourist arrivals with a decrease of more than 85 percent compared to 2020. Currently, the RGC has done many national campaigns to promote awareness and prevent the spread of COVID-19, which are in line with the World Health Organization (WHO) in collaboration with the Ministry of Health's Guidelines, the Ministry of Tourism's Safety Measures, and Standard Operating Procedures (SOPs).

Additionally, a nationwide COVID-19 vaccination scheme has been rolled out to stop the spread of the global pandemic of COVID-19. Over 94% of the Cambodian population has been vaccinated and the fifth dose has been administered from 9th June 2022 to ensure Cambodia as a "Safe Tourist Destination". Since the fourth quarter of 2021, a new chapter of Cambodia's tourism has been initiated with the ASEAN Tourism Forum (ATF) 2022, held from 16th – 22nd January, in Preah Sihanouk province, where **Samdech Techo HUN SEN** supporting the ASEAN Tourism Ministers to unanimously announce a gradual reopening of ASEAN Tourism based on the rate of vaccination as a benchmark indicator. In terms of moving forward, the future of Cambodia's tourism looks promising with some of the most significant conferences and exciting mega sporting events such as the ASEAN Summit 2022, **the 32nd SEA GAMES from 5th – 17th May 2023, and the 12th ASEAN PARA GAMES from 1st – 10th June 2023 in Phnom Penh** – Cambodia is the host of SEA GAMES for the first time in 64 years – and the Asian Youth Games 2029.

Facing an uncertainty of the world economy posed by the global pandemic of COVID-19, the RGC has taken necessary measures by developing and adopting Tourism Strategic Master Plans including the Roadmap of Cambodia's Tourism Recovery 2020-2025, the 2021-2035 Tourism Development Master Plans for Siem Reap and Mondulkiri, and soon-to-be 2022-2035 Kep's Tourism Development Master Plan. Once these Tourism Development Master Plans have been in place, we expect to increase both domestic and international tourists by 12 million and 5 million respectively by 2027. Moreover, The RGC has been tirelessly tackling several challenges, including waste management, electricity, clean water, infrastructure for the eco-tourism sites, telecommunication, and internet coverage throughout the country during this industrial revolution 4.0.

This volume of the Annual Tourism Statistics Report consists of three main important sectors on a wide range of topics which include Inbound and Outbound Tourism, International Border Checkpoints, Domestic Tourism, and Tourism Supply. It is believed that the publishing of this Annual Tourism Statistics Report 2022, which covers a variety of figures and information will help all tourism stakeholders to support their policies including marketing, academic, and other purposes.

I sincerely thank you for your interest and wish you all the four gems of Buddha's blessings: longevity, nobility, health, and strength.



Dr. THONG Khon
Minister of Tourism

Disclaimer

All rights are reserved. No part of this publication may be reproduced or transmitted in any form or by any means, electronic or mechanical, photocopying, recording, scanning or any form information storage and retrieval systems without prior permission in writing of authorised personnel from the Department of Statistics and Tourism Information of the Ministry of Tourism.

Limited of liability / Disclaimed of Warranty: While the publisher and author have used their best efforts in preparing this book, they make no representations or warranties with respect to the accuracy or completeness of the contents other this book and specifically disclaim any implied warranties of merchantability or fitness for a particular purpose. No warranty may be created or extended by sales representatives or written sales materials. The publisher is not engaged in rendering professional services, and you should consult with a professional where appropriate. Neither the publisher nor author shall be liable for any loss of profit or other commercial damages, including but not limit to special, incidental, consequential, or other damages.

This publication is intended to provide accurate information, data, statistics as well as materials derived from Information of the Ministry of Tourism was established by the Royal Government of Cambodia. With the commitments of our department, we have collected data of international visitor arrivals from various international border check points in Cambodia.

Particularly, it is nationality recognised that this Annual Statistical Report has been following the Definition of Tourism Statistics which is adopted and approved by Minister of Tourism. Statistical data used was accurate at the time of compilation and printing some changes due to revisions and / or changing collection and weighting techniques may have occurred since then.



General Information



Official Name	Kingdom of Cambodia
Area	181,035 km ²
National Independence Day	09 November, 1953
Population	15,288,489 (Census 2019) Male: 48.52%, Female: 51.47% Exclude Oversea Workers
Annual Population Growth Rate	1.2%
Cambodian Outbound Tourism	30,517; -90.6% (2021)
Density	86
Language	Khmer
Religion	Buddhist 97%
Capital	1 (Phnom Penh)
Provinces	24
Cities	26
Khans	14
Districts	165
Communes	1,646
Sangkats	240
Village	14,073
Country Code	+855
Time	GMT +7 hours

Khmer History

The Mon-Khmer race developed slowly during the first six centuries of the Christian era. Under Indian influence, a powerful maritime empire called “Funan” ruled over all the shores of the Gulf of Siam. Within a short time, this new power known as Chenla absorbed the Funanese Kingdom. In the late 7th century, Chenla broke into two parts: land Chenla (to the north) and water Chenla (to the south along the Gulf of Thailand). Land Chenla was fairly stable during the 8th century, whereas water Chenla was beset by dynastic rivalries.

At the beginning of the 9th century, the kings set up their capital in the present province of Siem Reap. For nearly six centuries, they erected two hundred temples as well as their sanctuaries in the Angkorian area of some 400 square kilometers in the Siem Reap Province.

King Suryavarman II (1113-1150) built the temples such as Angkor Wat, Thommanon, Chau Say Tevoda, Preah Palilay, Preah Pithu, and Banteay Samrè.

Jayavarman VII (1181-1220) was best known for his huge building program. Firstly, he built Ta Prohm (1186) and Preah Khan (1191) to dedicate to his parents. Secondly, he erected Banteay Kdei, Srah Srang, the Terrace of the Leper King, the Terrace of the Elephants, Neak Pean, Ta Som, Ta Nei, and some others in other parts of the country. Thirdly, he founded his great capital, Angkor Thom. Finally, in the center, he built the Bayon with its two hundred stone faces.

The decline of the Angkor era began after the death of King Jayavarman VII in the early 13th century. Due to the Siamese invasion and the limitation of the irrigation system, Khmer power declined so much that the king was finally obliged to move to the vicinity of Phnom Penh in 1431. Resulting from a series of Siamese and Cham invasions, the country was put as a French protectorate in 1863.

After regaining Independence in 1953, the country has had several names:

1. The Kingdom of Cambodia (under the Reachia Niyum Regime from 1953 to 1970);
2. The Khmer Republic (under the Lon Nol Regime from 1970 to 1975);
3. Democratic Kampuchea (under the Pol Pot Genocidal Regime from 1975 to 1979);
4. The People’s Republic of Kampuchea (1979-1989);
5. The State of Cambodia (1989-1993);
6. The Kingdom of Cambodia (1993 until now).

Definitions of Tourism Statistics

- **Statistics** are the data obtained by collecting, processing, compiling, analyzing, publishing and disseminating results, gathered from respondents through statistical collections or from administrative data sources.
- **Data** may be quantitative data and qualitative data.
- **Quantitative data** are information in the form of numbers.
- **Qualitative data** are textual information.
- **Tourism statistics data** is statistical data have been produced by the Department of Tourism Statistics of the National Institute of Tourism, Ministry of Tourism.
- **Tourism** refers to the activities of individuals travelling to and staying in places outside their usual environment for a specified period and not exceeding one consecutive year for leisure, recreation, business, and any other legal tourism purposes.
- **Tourist** refers to any persons who are Cambodian or non-Cambodian nationals travelling to other places outside their usual environment, staying at least overnight and not exceeding a specified period for leisure, recreation, business, and other legal tourism purposes; and not relevant to the purpose of permanent residence or any remunerated activities.
- **International tourist** refers to any foreign visitors to Cambodia who stay at least overnight but not more than a specified period for leisure, recreation, business and other legal tourism purposes; and not relevant to the purpose of permanent residence or any remunerated activities.
- **Internal tourists** may be domestic tourists and foreign visitors.
- **Domestic tourists** refers to any persons who are Cambodian citizens travelling within Cambodia and staying at least overnight and not exceeding a specified period for leisure, recreation, business and other legal tourism activities.
- **Foreign visitors** refer to any persons who are not Cambodian nationals, but have legal temporary residence in Cambodia, travelling within Cambodia and staying overnight for leisure, recreation, business and other legal tourism activities.
- **Cambodia outbound tourists** refers to any Cambodian nationals who travel overseas (Cambodian nationals living abroad are excluded), staying at least overnight for leisure, recreation, business or other legal tourism purposes.
- **Same-day visitor** (Excursionist) refers to any individuals who are Cambodian or non-Cambodian nationals travelling to other places outside their usual environment for leisure, recreation, business, and other legal tourism purposes, but do not stay overnight there.
- **Tourism survey** is a scientific statistical collection of data on domestic tourist, international tourist, tourism establishments or other tourism organizational which statistics unit selects as samples.
- **Tourism manpower** refers to any persons who have been working in the tourism sector.
- **Tourism skilled labor** refers to any persons who have professionalism in tourism and have been working in the tourism sector.

CONTENTS

Minister Message	
Disclaimer	
General Information	
Definitions of Tourism Statistics	
Tourism Highlight 1993 – 2021	
Quick Overview of Key Trends in 2021	
Map of International Border Check-Point	

Unit I – Inbound and Outbound Tourism Statistics

International Tourist Arrivals to Cambodia by Months in 2015 – 2021	1
International Tourist Arrivals to Cambodia by Country of Residence in 2021	2 – 3
<i>(by all means of transport)</i>	
International Tourist Arrivals to Cambodia by Purposes of Visit in 2021	4 – 5
<i>(by all means of transport)</i>	
International Tourist Arrivals to Cambodia by Regions in 2021	6
<i>(by all means of transport)</i>	
International Tourist Arrivals to Cambodia by Mode of Arrivals in 2020 – 2021	7
International Tourist Arrivals to Cambodia by Mode of Arrivals in 2017 – 2021 <i>(by all means of transport)</i>	7
Top ten Generating Markets 2015 – 2021	8
International Tourist Arrivals to Cambodia by International Border Check-points in 2021	9 – 10
Cambodia Outbound Tourists by Int'l Border Check-points in 2009 – 2021	11
International Outbound Tourist Departures by Int'l Border Check-points in 2012 – 2021	12
Major Data in 1993 – 2021	13
Profile of International Tourist Arrivals to Cambodia in 2019 (Inbound Tourism Survey 2019)	14

Section I: Phnom Penh International Airport (PNH)

International Tourist Arrivals to Phnom Penh International Airport by Months in 2013 – 2021	13
International Tourist Arrivals to Phnom Penh International Airport by Country of Residence in 2021	14 – 15
Top Ten Generating Markets in 2021, Int'l Tourist Arrivals by Rank.....	15
International Tourist Arrivals to Phnom Penh International Airport by Regions in 2021	16
International Tourist Arrivals to Phnom Penh International Airport by Purposes of Visit in 2014 – 2021	17
Int'l Tourist Departures from Phnom Penh International Airport (PNH) by Months in 2014 – 2021	18

Section II: Siem Reap International Airport (REP)

International Tourist Arrivals to Siem Reap International Airport by Months in 2013 – 2021	19
<i>(by air only)</i>	
International Tourist Arrivals to Siem Reap International Airport by Country of Residence in 2021	20 – 21
Top Ten Generating Markets in 2021, Tourist Arrivals by Rank <i>(by air only)</i>	21
International Tourist arrivals to Siem Reap International Airport by Regions in 2021	22
International Tourist Arrivals to Siem Reap International Airport by Purposes of Visit in 2014 – 2021	23
Foreign Visitor Arrivals to Siem Reap Angkor by Months in 2014 – 2021	24
<i>(by all means of transport)</i>	
Foreign Visitor Arrivals to Siem Reap Angkor by Mode of Transport in 2016 – 2021	24
Top Ten Foreign Visitor Arrivals to Siem Reap Angkor in 2021 <i>(by all means of transport)</i>	24

Section III: International Border Check-points

International Tourist Arrivals to Cambodia by Land and Waterways in 2013 – 2021	25
Int'l Tourist Arrivals to Cambodia by Land and Waterways by Country of Residence in 2021	26 – 27
Top Ten Generating Markets in 2021, Tourist Arrivals by Rank	27
International Tourist Arrivals to Cambodia by Land and Waterways by Regions in 2021	28
International Tourist Arrivals to Cambodia by Land and Waterways by Purposes of Visit in 2014 – 2021	28

Unit II – Domestic Tourism Statistics

Cambodia Visitor Arrivals to Provinces in 2008 – 2021	29
Foreign Visitor Arrivals to Provinces in 2008 – 2021	29

Unit III – Tourism Supply Side

Tourism supply side: Accommodations

Number of Hotels, Guesthouses, Restaurant and Massage in 1997 – 2021	30
Tourism Service Statistics in 2021	30

Tourism supply side: Tourism services

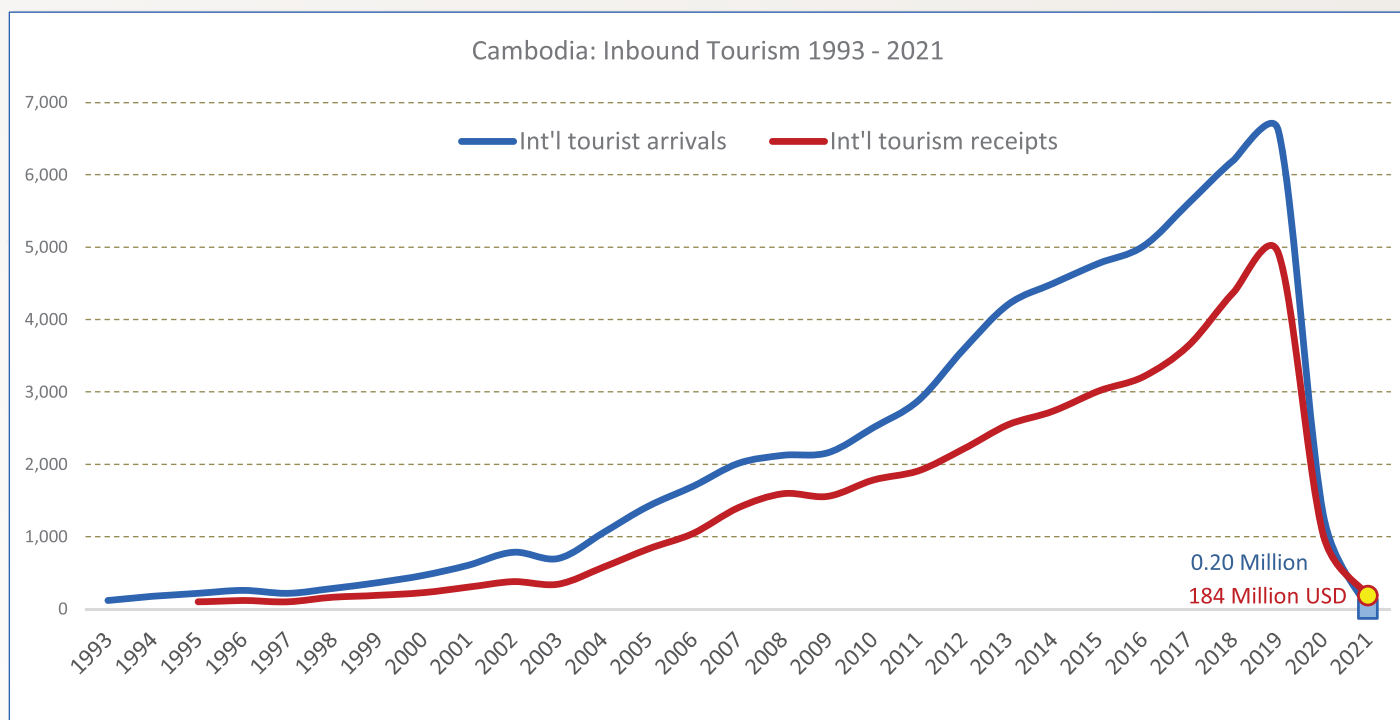
Number of Tour Operators and Travel Agent in 1996 – 2021	31
Number of Tourist Guides License in 2021	31
សូចនាករគន្លឹះទេសចរណ៍ឆ្នាំ ២០២១ (Key tourism indicators 2021)	32
Published by	33



Tourism Highlights

Int'l Tourist Arrivals, Average Length of Stays, Hotel Occupancy & Int'l Tourism Receipts in 1993 - 2021

Years	Int'l Tourist Arrivals		Average Length	Hotel Occupancy	Int'l Tourism Receipts
	Number	Change (%)	of Stays (Days)	(%)	(Million USD)
1993	118,183	-	N/A	N/A	N/A
1994	176,617	49.4	N/A	N/A	N/A
1995	219,680	24.4	8.0	37.0	100
1996	260,489	18.6	7.5	40.0	118
1997	218,843	-16.0	6.4	30.0	103
1998	286,524	30.9	5.2	40.0	166
1999	367,743	28.3	5.5	44.0	190
2000	466,365	26.8	5.5	45.0	228
2001	604,919	29.7	5.5	48.0	304
2002	786,524	30.0	5.8	50.0	379
2003	701,014	-10.9	5.5	50.0	347
2004	1,055,202	50.5	6.3	52.0	578
2005	1,421,615	34.7	6.3	52.0	832
2006	1,700,041	19.6	6.5	54.8	1,049
2007	2,015,128	18.5	6.5	54.8	1,400
2008	2,125,465	5.5	6.7	62.7	1,595
2009	2,161,577	1.7	6.5	63.6	1,561
2010	2,508,289	16.0	6.5	65.7	1,786
2011	2,881,862	14.9	6.5	66.2	1,912
2012	3,584,307	24.4	6.3	68.5	2,210
2013	4,210,165	17.5	6.8	69.5	2,547
2014	4,502,775	7.0	6.5	67.6	2,736
2015	4,775,231	6.1	6.8	70.2	3,012
2016	5,011,712	5.0	6.3	68.9	3,212
2017	5,602,157	11.8	6.6	71.3	3,638
2018	6,201,077	10.7	7.0	72.2	4,375
2019	6,610,592	6.6	6.2	63.5	4,919
2020	1,306,143	-80.2	Jan - Mar: 6.2 Apr - Dec: 30.0	Jan - Mar: 78.9 Apr - Dec: 8.3	1,023
2021	196,495	-85.0	30.0	15.5	184



របាយការណ៍ស្ថិតិទេសចរណ៍ឆ្នាំ២០២១

នាយកដ្ឋានស្ថិតិទេសចរណ៍ នៃវិទ្យាស្ថានជាតិទេសចរណ៍ ក្រសួងទេសចរណ៍ បានប្រមូល រៀបចំ ចងក្រងទិន្នន័យស្ថិតិទេសចរណ៍ពីបណ្តាប្រកាសអន្តរជាតិ រួមមាន អាកាសយានដ្ឋានអន្តរជាតិ ចំនួន ៣, ប្រកាសព្រំដែនគោក ចំនួន ១៥, ប្រកាសព្រំដែនទឹក ចំនួន ៤ និងទូទាំង២៥ រាជធានី ខេត្ត រួមបញ្ចូលការសិក្សាស្ទង់មតិ (Field Observation Study) លើការចំណាយទេសចរណ៍ ដែលទទួលបានលទ្ធផលសរុប រួមមានដូចខាងក្រោម ៖

1. វិស័យទេសចរណ៍កម្ពុជា មានការរីកចម្រើនគួរឲ្យកត់សម្គាល់រយៈពេលដប់ឆ្នាំកន្លងមក ដែលមានអត្រាកំណើនទេសចរណ៍អន្តរជាតិជាមធ្យម ១២% ក្នុងមួយឆ្នាំ។ ឆ្នាំ២០១៩ ចាត់ទុកជាឆ្នាំកំពូល នៃវិស័យទេសចរណ៍កម្ពុជា ដែលសម្រេចបានមានដូចជា៖ (១) ទេសចរណ៍អន្តរជាតិ ៦,៦ លាននាក់ កើនឡើង ៦,៦%, (២) ចំណូលទេសចរណ៍អន្តរជាតិ ប្រមាណ ៤.៩១៩ លានដុល្លារអាមេរិក បានចាក់បញ្ចូលដោយផ្ទាល់ក្នុងចរន្តសេដ្ឋកិច្ចជាតិ, (៣) បានរួមចំណែកប្រមាណ ១២,១% នៃផលិតផលក្នុងស្រុកសរុប, (៤) ទេសចរណ៍ ប្រមាណ ១១,៣ លាននាក់ កើនឡើង ២,៣% បានធ្វើដំណើរកម្សាន្តទូទាំងប្រទេស, (៥) មូលដ្ឋានអាជីវកម្មទេសចរណ៍ មានចំនួន ១៦.២២១ អាជ្ញាប័ណ្ណ និង (៦) បានបង្កើតមុខរបរ និងការងារទេសចរណ៍ ប្រមាណ ៦៣ ម៉ឺននាក់។

2. ឆ្នាំ២០២១ កម្ពុជាទទួលបានទេសចរណ៍អន្តរជាតិ ២០ ម៉ឺននាក់ (១៩៦.៤៩៥) ថយចុះ ៨៥% ធៀបឆ្នាំ២០២០។ ក្នុងនោះ មធ្យោបាយធ្វើដំណើរ ៖

- ផ្លូវអាកាស ៩៩.៨២៩ នាក់ ស្មើនឹង ៥០,៨% នៃចំនួនសរុប ថយចុះ ៨៦,៨%
- ផ្លូវគោក ៩៦.៤៧៨ នាក់ ស្មើនឹង ៤៩,១% នៃចំនួនសរុប ថយចុះ ៨០,៦%
- ផ្លូវទឹក ១៨៨ នាក់ ស្មើនឹង ០,១% នៃចំនួនសរុប ថយចុះ ៩៩,៦%

និងប្រភពទីផ្សារទេសចរណ៍សំខាន់ៗ ៖

- ទ្វីបអាស៊ីប៉ាស៊ីហ្វិក ១៧៩.៥២៨ នាក់ ស្មើនឹង ៩១,៤% នៃចំនួនសរុប ថយចុះ ៨១,៩% ក្នុងនោះ អាស៊ាន ១១៨.៥៧២ នាក់ ស្មើនឹង ៦០,៣% នៃចំនួនសរុប ថយចុះ ៧៦,១%
- ទ្វីបអឺរ៉ុប ៩.០០០ នាក់ ស្មើនឹង ៤,៦% នៃចំនួនសរុប ថយចុះ ៩៦,០%
- ទ្វីបអាមេរិក ៧.៥០៧ នាក់ ស្មើនឹង ៣,៨% នៃចំនួនសរុប ថយចុះ ៩១,០%
- ទ្វីបអាហ្វ្រិក ៣១៧ នាក់ ស្មើនឹង ០,២% នៃចំនួនសរុប ថយចុះ ៩០,១%
- មជ្ឈិមបូព៌ា ១៤៣ នាក់ ស្មើនឹង ០,១% នៃចំនួនសរុប ថយចុះ ៨៨,៩%
- សំគាល់ពីគោលបំណងទេសចរណ៍ ៖ ឆ្នាំ២០១៩ ទេសចរសម្រាកលំហែកម្សាន្ត (Holiday and Leisure) មានរហូតដល់ ៧៦,២%; ទេសចរធុរកិច្ច និងទេសចរការទូត (Business) មាន ២០,៧%; និងផ្សេងៗ (Others) មាន ៣,១%។ ក្នុងបរិការណ៍ នៃជំងឺកូវីដ-១៩ ឆ្នាំ២០២១ គោលបំណងទេសចរណ៍មានការប្រែប្រួល ជាក់ស្តែងទេសចរសម្រាកលំហែកម្សាន្ត មាន ៤៨,៩%; ទេសចរធុរកិច្ច និងការទូត មាន ៤៦,៤%; និងផ្សេងៗ ៤,៧%។

3. ទេសចរជាតិចេញទៅក្រៅ (Cambodia outbound tourists) ចំនួន ៣០.៥១៧ នាក់ (៣ ម៉ឺននាក់) ថយចុះ ៩០,៦% ធៀបឆ្នាំ២០២០។

4. ចំណូលទេសចរណ៍អន្តរជាតិ (International Tourism Receipts) ទទួលបាន ១៨៤ លានដុល្លារអាមេរិក ថយចុះ ៨២,០% ធៀបឆ្នាំ២០២០។

5. វិស័យទេសចរណ៍កម្ពុជា បានរួមចំណែកក្នុងផលិតផលក្នុងស្រុកសរុប (GDP) ប្រមាណ ១,៨%។

6. ទេសចរផ្ទៃក្នុង (Internal tourists) បានធ្វើដំណើរកម្សាន្តទូទាំងប្រទេស រួមមាន ៖ (១) ទេសចរជាតិ (Domestic tourists - KHM) ប្រមាណ ៤,៦៦ លាននាក់ (៤.៦៦៣.០៨២ នាក់) ថយចុះ ៣៥,៥% និង (២) ទេសចរវេនទេស (Foreign visitors - FOR) ប្រមាណ ០,២៨ លាននាក់ (២៧៩.២៧៨ នាក់) ថយចុះ ៨៤,៦% ធៀបឆ្នាំ២០២០។ ក្នុងនោះតំបន់ទេសចរណ៍អាទិភាព ៖

- តំបន់ភ្នំពេញ ៖ KHM: ១.២២០.៩៧៥ នាក់ ថយចុះ ៣៣,៥%; FOR: ១១៤.១៧៥ នាក់ ថយចុះ ៨៤,១%
 - សៀមរាបអង្គរ៖ KHM: ៣៧២.៦៧១ នាក់ ថយចុះ ៤៧,០%; FOR: ១០.៨៨៦ នាក់ ថយចុះ ៩៧,៣%
 - តំបន់ឆ្នេរសមុទ្រ៖ KHM: ២.០៥០.៨៦៥ នាក់ ថយចុះ ២៨,៦%; FOR: ១០៥.៨៩២ នាក់ ថយចុះ ៧០,៣%
- ក្នុងនោះខេត្តព្រះសីហនុ៖ KHM: ១.១១៤.៣៨៣ នាក់ កើនឡើង ៤០,៤%; FOR: ៨៩.៣៧៧ នាក់ ថយចុះ ៦០,៣%
- តំបន់អេកូទេសចរណ៍ភូមិភាគឦសាន៖ KHM: ៤៣៨.៧៣៧ នាក់ ថយចុះ ២៤,៧%; FOR: ៤.៣១៥ នាក់ ថយចុះ ៨២,៧%។

7. ចំណាយទេសចរជាតិសរុបប្រមាណ ២៣០ លានដុល្លារអាមេរិក រយៈពេលស្នាក់នៅមធ្យម ៣ថ្ងៃ ២យប់ និង ចំណាយមធ្យមសម្រាប់ទេសចរជាតិម្នាក់ ៥០ ដុល្លារអាមេរិក។

8. មូលដ្ឋានអាជីវកម្មទេសចរណ៍ ចំនួន ១៤.៤៣៥ អាជ្ញាប័ណ្ណ ដែលត្រូវបានផ្តល់ដោយក្រសួងទេសចរណ៍។

9. នៅទូទាំងប្រទេស យើងមានបន្ទប់សម្រាប់បម្រើឲ្យសេវាកម្មស្នាក់នៅសរុបចំនួន ៨៦.៤៩៩ បន្ទប់។

10. មុខរបរ និងការងារទេសចរណ៍ (Tourism direct jobs) មានប្រមាណ ២២,៥ ម៉ឺននាក់។

11. មូលដ្ឋានអាជីវកម្មទេសចរណ៍ ដែលត្រូវបានផ្អាកបញ្ឈប់ដោយសារវិបត្តិ នៃជំងឺកូវីដ-១៩ សរុបទូទាំងប្រទេស ២.៦១៤ ទីតាំង និងបុគ្គលិកបម្រើការងារដែលបានរងផលប៉ះពាល់រាប់ម៉ឺននាក់ទៀត។

សន្និដ្ឋានរួម ៖

- វិបត្តិ នៃជំងឺកូវីដ-១៩ បានជះឥទ្ធិពលយ៉ាងខ្លាំងមកលើការអភិវឌ្ឍរបស់ពិភពលោកលើគ្រប់វិស័យ ដោយឡែកវិស័យ ទេសចរណ៍កម្ពុជា ត្រូវរង់ចាំរយៈពេលពី ០៣ ទៅ ០៥ ឆ្នាំ ទើបអាចស្តារមកស្ថានភាពដូចដើមវិញ ប៉ុន្តែបើបរិការណ៍ ជំងឺកូវីដ-១៩នៅអូសបន្លាយ នោះអាចត្រូវរង់ចាំរយៈពេលរហូតដល់ ០៧ ឆ្នាំ

- បន្ទាប់ពីជំងឺកូវីដ-១៩បានធូរស្រាល ទេសចរអន្តរជាតិនឹងមានអត្រាកំណើនយឺតក្រោមទម្រង់ជាអក្សរ " U " ដែល អាចត្រូវរង់ចាំរយៈពេល ០៥ ឆ្នាំ។ ដោយឡែក ទេសចរជាតិនឹងមានអត្រាកំណើនលឿនក្រោមទម្រង់ជាអក្សរ " V " ដែល អាចត្រូវរង់ចាំរយៈពេល ០២ ឆ្នាំ

- ឆ្នាំ២០២២ ដោយសារឥទ្ធិពល នៃជំងឺកូវីដ-១៩បានធូរស្រាល សម្រាប់ទេសចរណ៍កម្ពុជា ត្រូវបានព្យាករថា នឹង មានអត្រាកំណើនវិជ្ជមាន ដែលអាចទទួលបានទេសចរអន្តរជាតិប្រមាណពី ៨០ ម៉ឺននាក់ ទៅ ១ លាននាក់

- ឆ្នាំ២០២៣ កម្ពុជានឹងធ្វើជាម្ចាស់ផ្ទះរៀបចំ SEA GAME លើកទី៣២ នេះជាព្រឹត្តិការណ៍មួយអាចទាក់ទាញ ទេសចរអន្តរជាតិយ៉ាងខ្លាំង ដែលត្រូវបានព្យាករថា នឹងមានអត្រាកំណើនល្អអាចទទួលបានទេសចរអន្តរជាតិបានប្រមាណ ២,២ លាននាក់

- ចលនាទេសចរផ្ទៃក្នុងដែលបានធ្វើដំណើរកម្សាន្តទូទាំងប្រទេស ជាស្នូល នៃការគាំទ្រចរន្តសេដ្ឋកិច្ចទេសចរណ៍ជាតិ ពិសេសដោយផ្ទាល់ដល់មូលដ្ឋានសហគមន៍ទេសចរណ៍ និងមានកំណើនឆាប់រហ័សក្នុងរយៈពេលពីរឆ្នាំប៉ុណ្ណោះ

- ជំងឺកូវីដ-១៩ បានផ្តល់ជាឱកាសសម្រាប់អប់រំប្រជាពលរដ្ឋត្រូវប្រកាន់ខ្ជាប់ក្នុងបរិបទគន្លងថ្មីនៃការរស់នៅ (New Normal Life)

- វិបត្តិ នៃជំងឺកូវីដ-១៩ បានឆ្លុះបញ្ចាំងឲ្យឃើញពីសារៈសំខាន់របស់វិស័យទេសចរណ៍ ជាឆ្លឹងខ្នងសេដ្ឋកិច្ចជាតិ។

Quick Overview of Key Trends

Tourism Report in 2021:

The Department of Tourism Statistics (DTS) of the National Institute of Tourism, Ministry of Tourism, has collected, processed and compiled tourism statistics data from all international border checkpoints (3 international airports, 15 international land border checkpoints and 4 waterway checkpoints) and across 25 capital cities and provinces. The DTS also conducted field observation studies on tourist expenditures which brought about the following outcomes:

1. Cambodia tourism sector has remarkably grown over the past ten years, with the average annual growth rate of international tourist arrivals of 12%. Cambodia tourism reached the peak in 2019 with the following achievements: (1) International Tourists: 6.6 M increased by +6.6%, (2) International Tourism Receipts: USD 4,919 M injected directly into national economic flows, (3) contributed approx. 12.1% to GDP, (4) Domestic Tourists: 11.3 M increased by +2.3%, (5) 16,221 licenses for Tourism Establishments, (6) created approximately 630,000 tourism direct jobs.

2. In 2021, Cambodia received 200 thousand international tourist arrivals with a decreasing rate of 85% compared to 2020, based on the following modes of arrivals:

- Air: 99,829 pax, equivalent to 50.8% of the total, decreased by 86.8%.
- Land: 96,478 pax, equivalent to 49.1%, decreased by 80.6%.
- Waterways: 188 pax, equivalent to 0.1%, decreased by 99.6%.

For the sources of major tourist markets:

- Asia-Pacific: 179,528 pax, equivalent to 91.4% of the total, decreased by 81.9%.
From ASEAN, 118,572 pax, equivalent to 60.3%, decreased by 76.1%.
- Europe: 9,000 pax, equivalent to 4.6%, decreased by 96%.
- Americas: 7,507 pax, equivalent to 3.8%, decreased by 91%.
- Africa: 317 pax, equivalent to 0.2%, decreased by 90.1%.
- Middle East: 143 pax, equivalent to 0.1%, decreased by 88.9%.

Purposes of Visit: For 2019, Holiday and Leisure shared up to 76.2%, Business and Professionals accounted for 20.7%, and others accounted for 3.1%. In the context of COVID-19 pandemic, tourism objectives have changed dramatically; as a result, leisure tourism accounted for 48.9%; business and professionals accounted for 46.4%; and others accounted for 4.7%.

3. Cambodia outbound tourists: 30,517 (0.03 M) decreased by 90.6% compared to 2020.

4. International Tourism Receipts: USD 184 Million decreased by 82.0% compared to 2020.

5. Cambodia tourism sector contributed about 1.8% to GDP.

6. Internal tourists travelled across the country including (1) Domestic tourists (KHM) accounted for 4.66 M (4,663,082 pax), decreased by 35.5%, (2) Foreign visitors (FOR) accounted for 0.28M (279,278 pax), decreased by 84.6% compared to 2020.

Prioritized tourist zones welcomed tourists as follows:

- Phnom Penh: KHM: 1,220,975 pax, decreased by 33.5%; FOR: 114,175 pax decreased by 84.1%.
- Siem Reap Angkor: KHM: 372,671 pax, decreased by 47.0%; FOR: 10,886 pax, decreased by 97.3%.
- Coastal areas: KHM: 2,050,865 pax, decreased by 28.6%; FOR: 105,892 pax, decreased by 70.3%.
In Sihanoukville: KHM: 1,114,383 pax, increased by +40.4%; FOR: 89,377 pax, decreased by 60.3%.
- Northeastern zones (Eco-tourism): KHM: 438,737 pax, decreased by 24.7%; FOR: 4,315 pax, decreased by 82.7%.

7. Total domestic tourist expenditure: approximately USD 230 Million, with an average length of stay, 3 days and 2 nights and the average expenses of USD50 per tourist.

8. 14,435 tourism business licenses were issued by the Ministry of Tourism.

9. 86,499 rooms are available to welcome tourists across the country.

10. Approximately 22.5K tourism direct jobs have been created in tourism industry.

11. Due to the COVID-19 crisis, 2,614 tourism establishments have been suspended and hundred of thousands of workers and staffs have lost their jobs.

Conclusions:

- The crisis of COVID-19 pandemic has strongly affected the development of all sectors including tourism. Cambodia tourism may need 2 to 5 years to fully recover; however, it may need up to 7 years if the risks of COVID-19 have not been controlled yet.
- After the gradual recovery of COVID-19, international tourists will increase slowly under the form of “U” letter, which may need 5 years to recover. Domestic tourists will grow rapidly under the form of “V” letter, which may need 2 years to recover.
- In 2022, due to the fact that the effects of covid-19 pandemic alleviated, Cambodia’s tourism is predicted to have a positive growth that will be capable of welcoming international tourists 0.8 million up to 1.0 million.
- In 2023, Cambodia will be hosting the 32nd SEA GAME, a major international tourist attraction, which is estimated to have a positive growth, approximately 2.2 million of international tourist arrivals.
- The internal tourists’ movement, which is traveled throughout the country, is the core support to the national tourism economic movement, especially, the tourism community base that will grow rapidly in just two years’ time.
- COVID-19 has provided an opportunity to educate people to adapt to new ways of **New Normal Life**.
- The COVID-19 crisis underscores the importance of tourism sector as the backbone of the national economy.





THAILAND

LAOS

VIETNAM

Legend

- Provincial / City
- International Airport
- Domestic Airport
- Port
- Railway Track
- Check Point
- International Boundary
- Provincial Boundary
- District Center



UNIT I

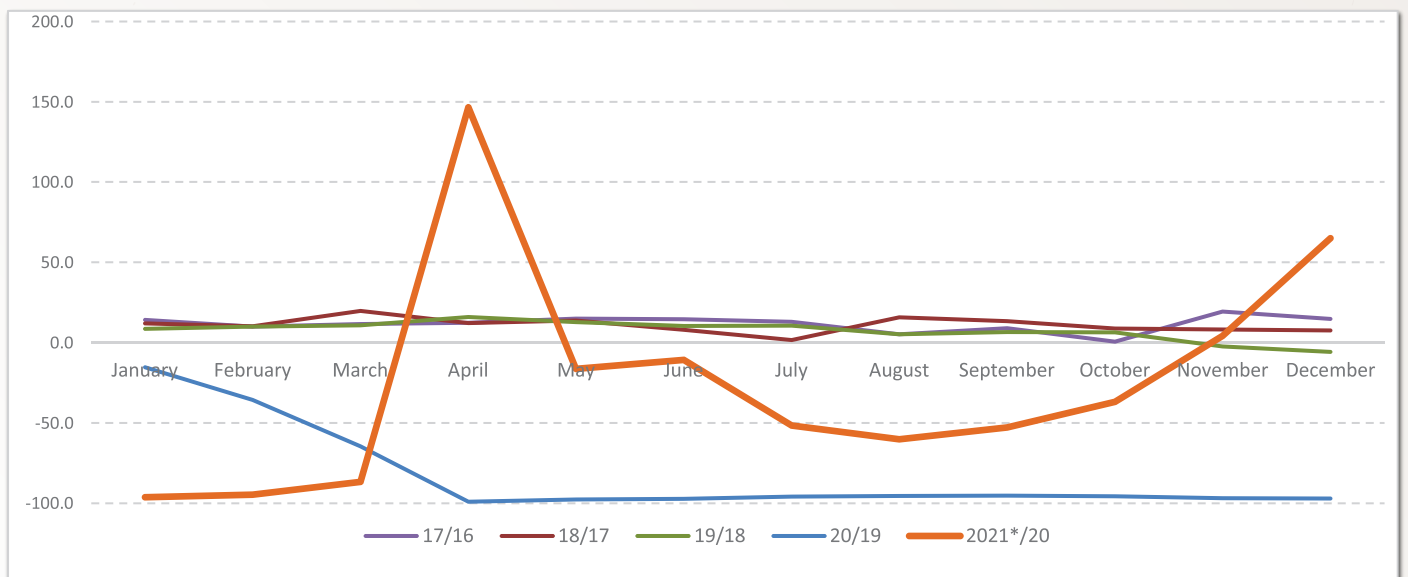
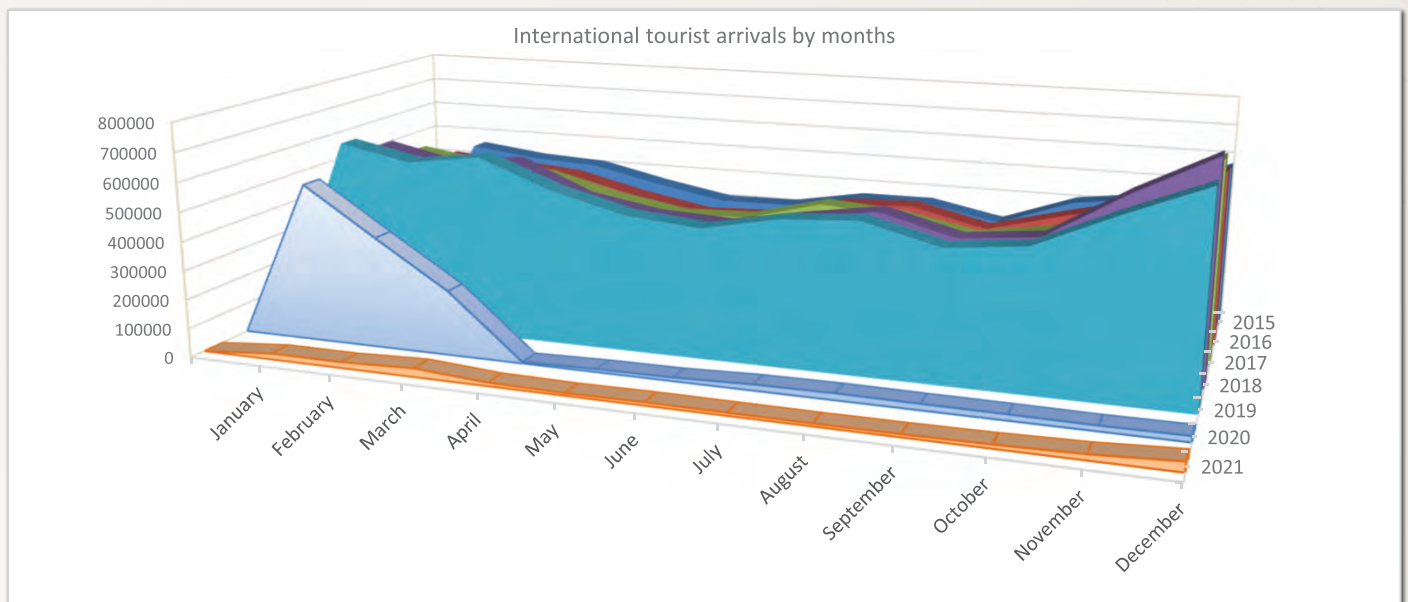
**INBOUND & OUTBOUND
TOURISM**



Royal Palace in Phnom Penh Capital

International Tourist Arrivals to Cambodia by Months in 2015 - 2021

Months	2015	2016	2017	2018	2019	2020	2021	Change (%)				
								17/16	18/17	19/18	20/19	2021*/20
Q1	1,307,836	1,342,477	1,502,896	1,711,253	1,877,853	1,155,226	70,901	11.9	13.9	9.7	-38.5	-93.9
January	460,577	466,086	532,206	596,241	647,206	547,963	20,567	14.2	12.0	8.5	-15.3	-96.2
February	430,207	448,468	493,316	542,937	597,483	383,863	20,580	10.0	10.1	10.0	-35.8	-94.6
March	417,052	427,923	477,374	572,075	633,164	223,400	29,754	11.6	19.8	10.7	-64.7	-86.7
Q2	994,154	1,018,455	1,159,783	1,290,407	1,460,621	27,600	31,659	13.9	11.3	13.2	-98.1	14.7
April	361,139	367,684	412,925	463,423	537,656	4,841	11,938	12.3	12.2	16.0	-99.1	146.6
May	314,748	320,601	368,809	419,171	472,952	10,475	8,757	15.0	13.7	12.8	-97.8	-16.4
June	318,267	330,170	378,049	407,813	450,013	12,284	10,964	14.5	7.9	10.3	-97.3	-10.7
Q3	1,044,880	1,147,483	1,250,082	1,374,373	1,475,832	64,854	29,114	8.9	9.9	7.4	-95.6	-55.1
July	364,325	395,761	446,627	454,056	502,421	20,689	9,984	12.9	1.7	10.7	-95.9	-51.7
August	366,096	406,214	427,224	494,043	519,502	23,028	9,163	5.2	15.6	5.2	-95.6	-60.2
September	314,459	345,508	376,231	426,274	453,909	21,137	9,967	8.9	13.3	6.5	-95.3	-52.8
Q4	1,428,361	1,503,297	1,689,396	1,825,044	1,796,286	58,463	64,821	12.4	8.0	-1.6	-96.7	10.9
October	408,922	414,077	417,039	453,370	481,782	20,210	12,759	0.7	8.7	6.3	-95.8	-36.9
November	444,640	477,686	570,471	616,549	602,042	18,184	18,933	19.4	8.1	-2.4	-97.0	4.1
December	574,799	611,534	701,886	755,125	712,462	20,069	33,129	14.8	7.6	-5.6	-97.2	65.1
Total	4,775,231	5,011,712	5,602,157	6,201,077	6,610,592	1,306,143	196,495	11.8	10.7	6.6	-80.2	-85.0



International Tourist Arrivals to Cambodia by Country of Residence in 2021

(by all means of transportation)

Regions Country of Residence	2021												Total	Share (%) 2021*
	Jan	Feb	Mar	Apr	May	Jun	Jul	Aug	Sep	Oct	Nov	Dec		
Grand Total	20,567	20,580	29,754	11,938	8,757	10,964	9,984	9,163	9,967	12,759	18,933	33,129	196,495	100.0
Asia and the Pacific	19,602	19,905	29,246	11,524	8,355	10,314	8,797	7,685	8,801	11,603	16,609	27,087	179,528	91.4
ASEAN (South-East Asia)	13,929	14,184	13,963	8,609	6,104	7,603	5,216	4,544	5,074	7,787	11,594	19,965	118,572	60.3
Brunei Darussalam	0	0	0	0	0	0	7	3	0	0	1	0	11	0.0
Indonesia	449	790	1,092	602	205	277	177	113	506	518	1,345	2,336	8,410	4.3
Lao PDR	3	19	11	0	0	3	24	10	13	20	116	63	282	0.1
Malaysia	143	169	172	146	119	134	122	162	169	359	542	752	2,989	1.5
Myanmar	28	9	13	20	32	49	40	26	62	24	65	125	493	0.3
Philippines	71	61	65	72	99	82	113	184	134	119	194	268	1,462	0.7
Singapore	38	47	40	17	29	40	30	41	36	47	157	438	960	0.5
Thailand	12,757	11,684	10,853	6,500	4,601	5,895	4,141	3,967	4,061	5,451	4,441	7,493	81,844	41.7
Timor Leste	0	0	0	0	0	0	0	0	0	0	1	0	1	0.0
Vietnam	440	1,405	1,717	1,252	1,019	1,123	562	38	93	1,249	4,732	8,490	22,120	11.3
North-East Asia	5,528	5,589	15,142	2,807	2,197	2,643	3,458	2,975	3,539	3,635	4,450	5,835	57,798	29.4
China	4,770	4,789	14,278	2,149	1,707	2,058	2,731	2,158	2,557	2,594	2,604	3,380	45,775	23.3
Hong Kong (China)	2	0	0	1	0	0	0	0	0	0	0	0	3	0.0
Japan	242	121	117	133	74	103	96	163	171	207	274	310	2,011	1.0
Korea (ROK)	400	381	343	257	195	257	338	380	438	445	1,119	1,521	6,074	3.1
Macau (China)	0	0	0	0	0	0	0	0	0	0	0	0	0	0.0
Mongolia	6	2	2	0	6	9	0	2	8	5	8	42	90	0.0
Taiwan (China)	108	296	402	267	215	216	293	272	365	384	445	582	3,845	2.0
Southern Asia	71	70	100	67	26	35	43	116	119	120	312	518	1,597	0.8
Afghanistan	0	1	0	0	0	0	0	0	0	0	44	40	85	0.0
Bangladesh	3	21	11	10	1	7	0	12	11	12	39	68	195	0.1
Bhutan	1	0	0	0	0	0	0	0	0	0	0	1	2	0.0
India	24	30	45	37	7	10	19	80	82	72	129	311	846	0.4
Iran	3	0	2	4	8	5	15	10	5	7	8	3	70	0.0
Nepal	2	1	5	3	1	0	0	0	6	15	38	30	101	0.1
Pakistan	3	6	12	3	0	8	4	6	7	3	20	28	100	0.1
Sri Lanka	35	11	25	10	9	5	5	8	8	11	34	37	198	0.1
Oceania	71	62	41	41	28	33	80	50	53	46	220	754	1,479	0.8
Australia	49	41	35	32	27	25	71	47	45	36	195	673	1,276	0.6
Fiji	0	0	0	0	0	0	1	0	1	0	0	1	3	0.0
New Zealand	22	21	6	9	1	8	8	3	7	10	25	80	200	0.1
Other Asia & the Pacific	3	0	0	0	0	0	0	0	16	15	33	15	82	0.0
Europe	492	275	246	205	154	283	614	949	610	581	1,085	3,506	9,000	4.6
Northern Europe	98	52	52	34	34	57	163	160	76	104	248	695	1,773	0.9
Denmark	8	5	10	1	1	2	6	22	6	4	16	45	126	0.1
Finland	5	1	1	0	0	1	3	18	3	6	13	36	87	0.0
Iceland	0	0	0	0	0	0	1	0	0	0	2	0	3	0.0
Ireland	4	4	1	1	3	2	8	4	2	1	9	43	82	0.0
Norway	0	2	2	1	0	1	3	9	1	1	15	33	68	0.0
Sweden	9	3	6	5	2	3	32	19	11	6	21	70	187	0.1
United Kingdom	72	37	32	26	28	48	110	88	53	86	172	468	1,220	0.6
Western Europe	321	168	135	132	90	160	311	629	389	376	674	2,184	5,569	2.8
Austria	6	1	0	1	0	3	3	6	5	6	15	44	90	0.0
Belgium	11	1	10	6	1	3	10	19	9	12	23	121	226	0.1
France	217	124	65	76	67	99	222	494	260	221	469	1,328	3,642	1.9
Germany	56	28	40	31	15	44	52	71	69	68	93	375	942	0.5
Luxembourg	0	0	0	0	0	1	0	2	0	2	1	3	9	0.0
Monaco	0	0	0	0	0	0	0	0	0	0	0	0	0	0.0
Netherlands	11	4	11	15	3	4	13	17	21	32	29	142	302	0.2
Switzerland	20	10	9	3	4	6	11	20	25	35	44	171	358	0.2
Central / Eastern Europe	37	36	24	24	19	49	73	82	76	43	81	369	913	0.5
Bulgaria	1	2	1	0	1	0	4	0	1	0	0	15	25	0.0
Czech Republic	2	4	2	0	1	1	4	9	1	5	42	72	72	0.0
Estonia	0	0	0	0	0	0	0	0	1	0	0	10	11	0.0
Hungary	2	1	0	2	2	0	6	2	1	0	0	19	35	0.0
Kazakhstan	6	3	0	1	3	2	8	6	15	7	9	14	74	0.0
Kyrgyzstan	0	0	0	0	0	0	12	7	2	3	2	1	27	0.0
Latvia	0	1	0	0	0	0	0	0	0	0	1	1	3	0.0
Lithuania	0	0	0	0	0	0	0	2	0	0	1	6	9	0.0
Poland	5	5	1	6	2	3	1	6	6	15	10	52	112	0.1
Romania	4	3	2	0	2	2	4	8	9	3	7	16	60	0.0
Russian Federation	3	10	13	10	7	29	30	32	30	9	35	149	357	0.2
Slovakia	13	1	1	1	0	0	0	1	0	0	2	6	25	0.0
Ukraine	1	6	3	2	0	8	1	9	7	5	7	27	76	0.0
Uzbekistan	0	0	1	2	1	4	3	0	3	0	2	11	27	0.0
Southern Europe	26	18	27	11	10	14	50	73	49	46	64	186	574	0.3
Croatia	0	0	2	1	2	0	2	2	0	0	3	6	18	0.0
Greece	0	1	1	1	0	0	1	1	3	0	2	7	17	0.0
Italy	12	11	13	4	4	5	29	40	21	27	30	97	293	0.1
Malta	0	0	0	0	0	0	0	0	0	2	0	2	4	0.0
Portugal	3	1	3	2	1	1	4	1	5	4	9	9	43	0.0
Serbia	0	1	3	0	1	2	0	8	1	0	0	2	18	0.0
Slovenia	2	1	0	1	1	4	0	0	0	1	1	10	21	0.0
Spain	9	3	5	2	1	2	14	21	19	12	19	53	160	0.1

International Tourist Arrivals to Cambodia by Country of Residence in 2021

(by all means of transportation)

Regions Country of Residence	2021												Total	Share (%) 2021*
	Jan	Feb	Mar	Apr	May	Jun	Jul	Aug	Sep	Oct	Nov	Dec		
Grand Total	20,567	20,580	29,754	11,938	8,757	10,964	9,984	9,163	9,967	12,759	18,933	33,129	196,495	100.0
East Mediterranean Europe	9	1	8	4	1	3	17	5	10	8	15	55	136	0.1
Israel	1	0	3	1	0	3	3	3	2	4	9	31	60	0.0
Turkey	8	1	5	3	1	0	14	2	8	4	6	24	76	0.0
Other Europe	1	0	0	0	0	0	0	0	10	4	3	17	35	0.0
Americas	433	365	241	169	224	346	548	493	518	536	1,190	2,444	7,507	3.8
North America	424	348	240	167	221	342	525	481	512	528	1,184	2,403	7,375	3.8
Canada	35	37	31	9	8	17	45	45	48	84	174	235	768	0.4
Mexico	0	3	3	4	3	2	9	17	10	5	6	10	72	0.0
United States of America	389	308	206	154	210	323	471	419	454	439	1,004	2,158	6,535	3.3
Central America	0	0	0	2	0	0	0	0	0	0	0	0	2	0.0
Costa Rica	0	0	0	0	0	0	0	0	0	0	0	0	0	0.0
Honduras	0	0	0	1	0	0	0	0	0	0	0	0	1	0.0
Jamaica	0	0	0	1	0	0	0	0	0	0	0	0	1	0.0
South America	8	17	1	0	3	4	23	12	6	5	6	31	116	0.1
Argentina	0	2	0	0	0	0	0	0	3	0	0	3	8	0.0
Brazil	5	9	1	0	2	4	12	7	1	1	1	14	57	0.0
Chile	0	1	0	0	0	0	1	0	0	0	1	4	7	0.0
Colombia	1	2	0	0	1	0	8	4	2	2	1	8	29	0.0
Ecuador	1	1	0	0	0	0	0	1	0	0	0	0	3	0.0
Peru	0	0	0	0	0	0	0	0	0	0	0	0	0	0.0
Uruguay	1	1	0	0	0	0	0	0	0	0	1	0	3	0.0
Venezuela	0	1	0	0	0	0	2	0	0	2	2	2	9	0.0
Other America	1	0	0	0	0	0	0	0	0	3	0	10	14	0.0
Africa	23	26	19	26	12	14	22	30	28	28	40	49	317	0.2
North Africa	3	0	2	0	1	0	0	5	2	2	2	6	23	0.0
Morocco	1	0	2	0	1	0	0	0	0	1	0	2	7	0.0
Sudan	0	0	0	0	0	0	0	4	2	1	1	0	8	0.0
Tunisia	2	0	0	0	0	0	0	1	0	0	1	4	8	0.0
Subsaharan Africa	20	26	17	26	11	14	22	25	17	21	25	30	254	0.1
Cameroon	2	1	0	0	1	1	0	0	2	4	0	3	14	0.0
Congo	0	0	0	0	0	0	0	0	0	0	0	0	0	0.0
Ghana	0	0	0	0	0	0	1	0	0	0	0	1	2	0.0
Kenya	2	3	6	0	0	0	0	3	1	0	1	2	18	0.0
Liberia	0	0	0	0	0	0	0	1	0	1	0	0	2	0.0
Nigeria	4	9	7	6	3	4	4	3	2	5	4	6	57	0.0
South Africa	10	11	3	13	7	9	16	16	9	4	19	17	134	0.1
Tanzania	0	1	0	1	0	0	0	0	0	2	0	0	4	0.0
Uganda	1	0	1	6	0	0	0	0	2	0	1	0	11	0.0
Zimbabwe	1	1	0	0	0	0	1	2	1	5	0	1	12	0.0
Other Africa	0	0	0	0	0	0	0	0	9	5	13	13	40	0.0
Middle East	17	9	2	14	12	7	3	6	10	11	9	43	143	0.1
Egypt	2	1	0	1	2	0	1	1	4	2	3	17	34	0.0
Iraq	0	1	0	1	1	0	0	1	0	2	0	4	10	0.0
Jordan	3	3	1	0	3	1	0	1	4	2	3	9	30	0.0
Kuwait	1	2	0	0	0	1	0	1	1	2	1	3	12	0.0
Oman	1	0	0	0	0	0	0	0	0	0	0	1	2	0.0
Palestine	0	0	0	0	0	0	0	0	0	0	0	2	2	0.0
Qatar	0	1	0	0	0	0	0	0	0	0	0	1	2	0.0
Saudi Arabia	0	0	0	0	0	0	0	2	0	1	0	3	6	0.0
Syria	0	1	0	1	1	0	1	0	0	0	0	3	7	0.0
United Arab Emirates	10	0	1	11	5	2	1	0	0	0	0	0	30	0.0
Yemen	0	0	0	0	0	3	0	0	0	0	2	0	5	0.0
Other Middle East	0	0	0	0	0	0	0	0	1	2	0	0	3	0.0

International Tourist Arrivals to Cambodia by Country of Residence by Purposes of Visit in 2021

(by all means of transportation)

Regions Country of Residence	2020	2021			Total	Female	Share 2021* (%)	Change 2021*/20 (%)
		Purposes of Visit						
		Holiday	Business	Others				
Grand Total	1,306,143	96,137	91,138	9,220	196,495	33,958	100.0	-85.0
Asia and the Pacific	993,226	92,656	83,915	2,957	179,528	27,866	91.4	-81.9
ASEAN (Southeast Asia)	496,486	90,361	26,736	1,475	118,572	15,087	60.3	-76.1
Brunei Darussalam	150	0	11	0	11	4	0.0	-92.7
Indonesia	14,564	1,764	6,634	12	8,410	1,698	4.3	-42.3
Lao PDR	34,352	45	213	24	282	95	0.1	-99.2
Malaysia	25,734	601	2,329	59	2,989	514	1.5	-88.4
Myanmar	3,100	67	421	5	493	198	0.3	-84.1
Philippines	14,760	212	1,225	25	1,462	512	0.7	-90.1
Singapore	10,731	401	533	26	960	232	0.5	-91.1
Thailand	210,876	77,239	3,325	1,280	81,844	2,548	41.7	-61.2
Timor Leste	20	0	1	0	1	0	0.0	-95.0
Vietnam	182,199	10,032	12,044	44	22,120	9,286	11.3	-87.9
Northeast Asia	450,429	1,677	55,275	846	57,798	11,919	29.4	-87.2
China	329,673	588	44,939	248	45,775	9,124	23.3	-86.1
Hong Kong (China)	273	0	3	0	3	1	0.0	-98.9
Japan	41,257	93	1,840	78	2,011	459	1.0	-95.1
Korea (ROK)	55,935	670	4,924	480	6,074	1,528	3.1	-89.1
Macau (China)	30	0	0	0	0	0	0.0	-100.0
Mongolia	322	37	49	4	90	21	0.0	-72.0
Taiwan (China)	22,939	289	3,520	36	3,845	786	2.0	-83.2
Southern Asia	17,606	252	1,319	26	1,597	322	0.8	-90.9
Afghanistan	50	5	80	0	85	43	0.0	70.0
Bangladesh	1,621	20	166	9	195	23	0.1	-88.0
Bhutan	43	0	2	0	2	1	0.0	-95.3
India	12,919	134	706	6	846	191	0.4	-93.5
Iran	304	12	55	3	70	4	0.0	-77.0
Nepal	680	22	77	2	101	18	0.1	-85.1
Pakistan	1,125	18	80	2	100	14	0.1	-91.1
Srilanka	864	41	153	4	198	28	0.1	-77.1
Oceania	28,211	353	518	608	1,479	504	0.8	-94.8
Australia	23,687	320	448	508	1,276	436	0.6	-94.6
Fiji	78	0	3	0	3	1	0.0	-96.2
New Zealand	4,446	33	67	100	200	67	0.1	-95.5
Other Asia & the Pacific	494	13	67	2	82	34	0.0	-83.4
Europe	225,006	2,489	4,565	1,946	9,000	3,159	4.6	-96.0
Northern Europe	61,661	647	1,015	111	1,773	501	0.9	-97.1
Denmark	4,366	44	69	13	126	34	0.1	-97.1
Finland	2,132	29	46	12	87	27	0.0	-95.9
Iceland	225	1	2	0	3	1	0.0	-98.7
Ireland	2,614	37	41	4	82	21	0.0	-96.9
Norway	2,812	30	28	10	68	18	0.0	-97.6
Sweden	4,728	65	113	9	187	54	0.1	-96.0
United Kingdom	44,784	441	716	63	1,220	346	0.6	-97.3
Western Europe	90,745	1,379	2,423	1,767	5,569	2,037	2.8	-93.9
Austria	3,560	37	35	18	90	25	0.0	-97.5
Belgium	4,278	84	103	39	226	78	0.1	-94.7
France	43,174	742	1,415	1,485	3,642	1,424	1.9	-91.6
Germany	27,280	295	561	86	942	271	0.5	-96.5
Luxembourg	186	2	5	2	9	2	0.0	-95.2
Monaco	27	0	0	0	0	0	0.0	-100.0
Netherlands	6,556	114	151	37	302	112	0.2	-95.4
Switzerland	5,684	105	153	100	358	125	0.2	-93.7
Central / Eastern Europe	44,187	253	626	34	913	367	0.5	-97.9
Bulgaria	943	12	13	0	25	9	0.0	-97.3
Czech Republic	2,341	29	35	8	72	29	0.0	-96.9
Estonia	532	10	1	0	11	2	0.0	-97.9
Hungary	2,809	12	18	5	35	18	0.0	-98.8
Kazakhstan	639	13	60	1	74	36	0.0	-88.4
Kyrgyzstan	149	2	25	0	27	12	0.0	-81.9
Latvia	371	0	3	0	3	2	0.0	-99.2
Lithuania	946	5	4	0	9	6	0.0	-99.0
Poland	7,610	36	70	6	112	37	0.1	-98.5
Romania	1,334	14	44	2	60	20	0.0	-95.5
Russian Federation	21,944	76	275	6	357	144	0.2	-98.4
Slovakia	1,146	7	17	1	25	8	0.0	-97.8
Ukraine	3,131	32	39	5	76	31	0.0	-97.6
Uzbekistan	292	5	22	0	27	13	0.0	-90.8
Southern Europe	20,959	151	389	34	574	203	0.3	-97.3
Croatia	559	8	10	0	18	7	0.0	-96.8
Greece	573	6	11	0	17	4	0.0	-97.0

International Tourist Arrivals to Cambodia by Country of Residence by Purposes of Visit in 2021

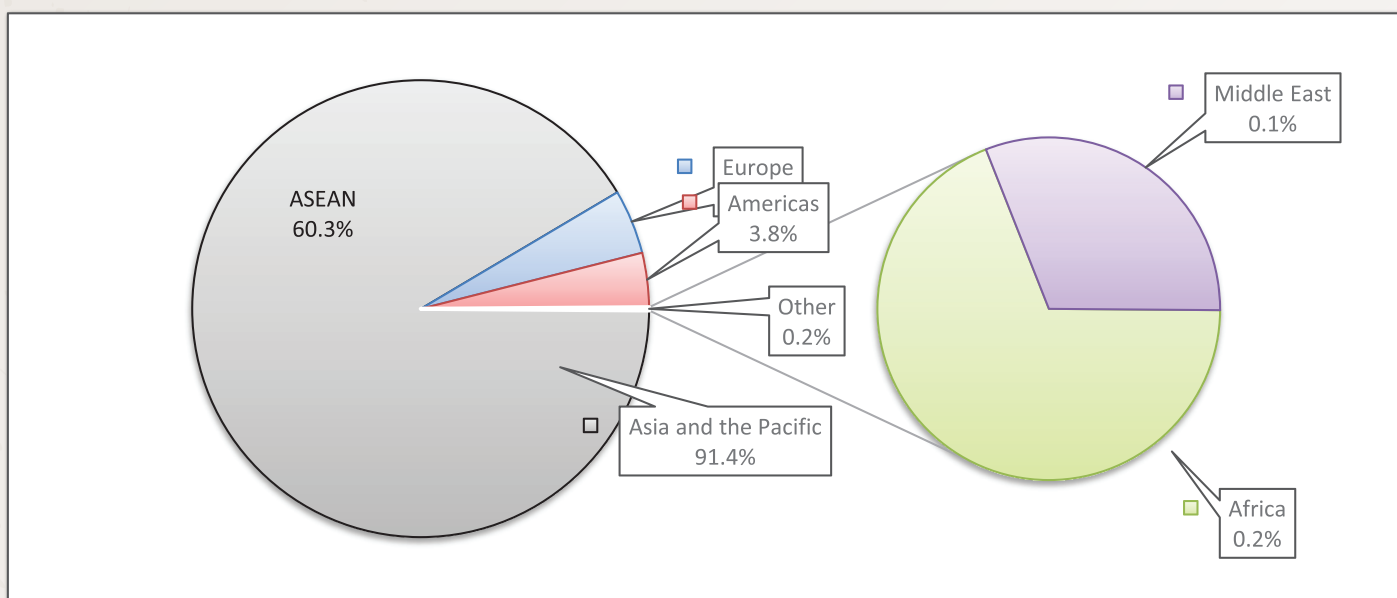
(by all means of transportation)

Regions Country of Residence	2020	2021					Share 2021* (%)	Change 2021*/20 (%)
		Purposes of Visit			Total			
		Holiday	Business	Others	Total	Female		
Grand Total	1,306,143	96,137	91,138	9,220	196,495	33,958	100.0	-85.0
Italy	11,058	65	205	23	293	89	0.1	-97.4
Malta	128	2	0	2	4	4	0.0	-96.9
Portugal	1,768	13	28	2	43	23	0.0	-97.6
Serbia	523	1	17	0	18	4	0.0	-96.6
Slovenia	545	12	9	0	21	9	0.0	-96.1
Spain	5,805	44	109	7	160	63	0.1	-97.2
East Mediterranean Europe	7,197	46	90	0	136	38	0.1	-98.1
Israel	4,812	28	32	0	60	14	0.0	-98.8
Turkey	2,385	18	58	0	76	24	0.0	-96.8
Other Europe	257	13	22	0	35	13	0.0	-86.4
Americas	83,412	882	2,333	4,292	7,507	2,814	3.8	-91.0
North America	73,117	845	2,250	4,280	7,375	2,762	3.8	-89.9
Canada	15,580	123	313	332	768	253	0.4	-95.1
Mexico	1,564	4	68	0	72	8	0.0	-95.4
United States of America	55,973	718	1,869	3,948	6,535	2,501	3.3	-88.3
Central America	224	0	2	0	2	2	0.0	-99.1
Costa Rica	145	0	0	0	0	0	0.0	-100.0
Honduras	41	0	1	0	1	1	0.0	-97.6
Jamaica	38	0	1	0	1	1	0.0	-97.4
South America	9,934	31	73	12	116	44	0.1	-98.8
Argentina	2,624	3	5	0	8	2	0.0	-99.7
Brazil	3,959	13	34	10	57	23	0.0	-98.6
Chile	1,568	5	2	0	7	2	0.0	-99.6
Colombia	919	5	23	1	29	12	0.0	-96.8
Ecuador	126	0	3	0	3	1	0.0	-97.6
Peru	347	0	0	0	0	0	0.0	-100.0
Uruguay	271	1	1	1	3	0	0.0	-98.9
Venezuela	120	4	5	0	9	4	0.0	-92.5
Other America	137	6	8	0	14	6	0.0	-89.8
Africa	3,210	53	245	19	317	99	0.2	-90.1
North Africa	483	8	11	4	23	12	0.0	-95.2
Morocco	310	3	4	0	7	5	0.0	-97.7
Sudan	43	1	3	4	8	1	0.0	-81.4
Tunisia	130	4	4	0	8	6	0.0	-93.8
Subsaharan Africa	2,682	30	210	14	254	84	0.1	-90.5
Cameroon	81	1	13	0	14	4	0.0	-82.7
Congo	20	0	0	0	0	0	0.0	-100.0
Ghana	254	1	1	0	2	0	0.0	-99.2
Kenya	128	4	7	7	18	10	0.0	-85.9
Liberia	92	0	2	0	2	0	0.0	-97.8
Nigeria	187	0	56	1	57	1	0.0	-69.5
South Africa	1,757	23	108	3	134	60	0.1	-92.4
Tanzania	34	0	2	2	4	0	0.0	-88.2
Uganda	71	0	10	1	11	5	0.0	-84.5
Zimbabwe	58	1	11	0	12	4	0.0	-79.3
Other Africa	45	15	24	1	40	3	0.0	-11.1
Middle East	1,289	57	80	6	143	20	0.1	-88.9
Egypt	280	9	24	1	34	14	0.0	-87.9
Iraq	111	2	5	3	10	1	0.0	-91.0
Jordan	157	6	24	0	30	3	0.0	-80.9
Kuwait	83	3	9	0	12	1	0.0	-85.5
Oman	51	2	0	0	2	0	0.0	-96.1
Palestine	38	1	1	0	2	0	0.0	-94.7
Qatar	17	1	1	0	2	0	0.0	-88.2
Saudi Arabia	90	3	3	0	6	0	0.0	-93.3
Syria	85	4	3	0	7	0	0.0	-91.8
United Arab Emirates	102	26	2	2	30	0	0.0	-70.6
Yemen	251	0	5	0	5	0	0.0	-98.0
Other Middle East	24	0	3	0	3	1	0.0	-87.5

International Tourist Arrivals to Cambodia by Regions in 2021

(by all means of transportation)

Months	Asia & the Pacific		Europe	Americas	Africa	Middle East	Total
		ASEAN					
Q1	68,753	42,076	1,013	1,039	68	28	70,901
January	19,602	13,929	492	433	23	17	20,567
February	19,905	14,184	275	365	26	9	20,580
March	29,246	13,963	246	241	19	2	29,754
Q2	30,193	22,316	642	739	52	33	31,659
April	11,524	8,609	205	169	26	14	11,938
May	8,355	6,104	154	224	12	12	8,757
June	10,314	7,603	283	346	14	7	10,964
Q3	25,283	14,834	2,173	1,559	80	19	29,114
July	8,797	5,216	614	548	22	3	9,984
August	7,685	4,544	949	493	30	6	9,163
September	8,801	5,074	610	518	28	10	9,967
Q4	55,299	39,346	5,172	4,170	117	63	64,821
October	11,603	7,787	581	536	28	11	12,759
November	16,609	11,594	1,085	1,190	40	9	18,933
December	27,087	19,965	3,506	2,444	49	43	33,129
Total	179,528	118,572	9,000	7,507	317	143	196,495
share (%)	91.4	60.3	4.6	3.8	0.2	0.1	100.0



International Tourist Arrivals to Cambodia by Mode of Arrivals in 2020 - 2021

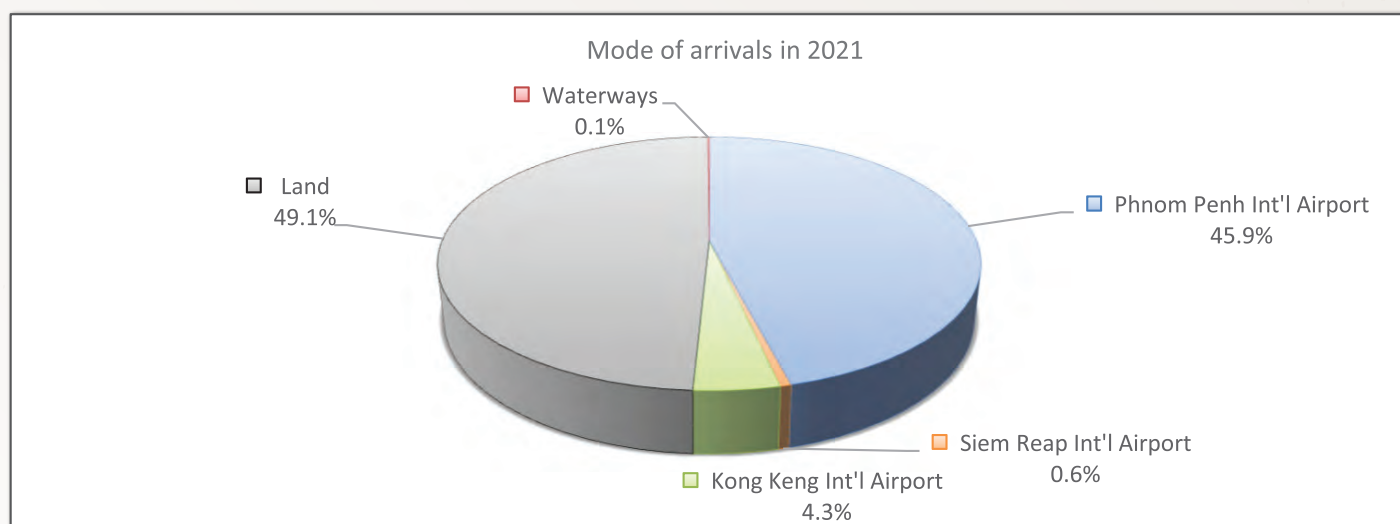
(by all means of transportation)

Months	2020				2021				Change (%) 2021*/20
	Air	Land	Waterways	Total	Air	Land	Waterways	Total	
Q1	663,641	440,096	51,489	1,155,226	33,535	37,366	0	70,901	-93.9
January	332,134	189,412	26,417	547,963	7,841	12,726	0	20,567	-96.2
February	210,451	154,281	19,131	383,863	7,902	12,678	0	20,580	-94.6
March	121,056	96,403	5,941	223,400	17,792	11,962	0	29,754	-86.7
Q2	19,211	8,389	0	27,600	12,714	18,943	2	31,659	14.7
April	3,746	1,095	0	4,841	4,811	7,125	2	11,938	146.6
May	7,187	3,288	0	10,475	3,565	5,192	0	8,757	-16.4
June	8,278	4,006	0	12,284	4,338	6,626	0	10,964	-10.7
Q3	36,325	28,524	5	64,854	16,801	12,313	0	29,114	-55.1
July	10,212	10,473	4	20,689	5,480	4,504	0	9,984	-51.7
August	12,118	10,909	1	23,028	5,337	3,826	0	9,163	-60.2
September	13,995	7,142	0	21,137	5,984	3,983	0	9,967	-52.8
Q4	37,088	21,375	0	58,463	36,779	27,856	186	64,821	10.9
October	15,132	5,078	0	20,210	6,363	6,396	0	12,759	-36.9
November	11,824	6,360	0	18,184	10,661	8,264	8	18,933	4.1
December	10,132	9,937	0	20,069	19,755	13,196	178	33,129	65.1
Total	756,265	498,384	51,494	1,306,143	99,829	96,478	188	196,495	-85.0

International Tourist Arrivals to Cambodia by Mode of Arrivals in 2017 - 2021

(by all means of transportation)

Mode of Arrivals						Share (%) 2021*	Change (%)			2021*/20
	2017	2018	2019	2020	2021		18/17	19/18	20/19	
Air	3,312,738	4,096,870	4,403,995	756,265	99,829	50.8	23.7	7.5	-82.8	-86.8
Phnom Penh Int'l Airport	1,409,833	1,923,773	2,071,907	441,851	90,244	45.9	36.5	7.7	-78.7	-79.6
Siem Reap Int'l Airport	1,820,687	1,939,550	1,665,365	240,917	1,085	0.6	6.5	-14.1	-85.5	-99.5
Kong Keng (KOS)	82,218	233,547	666,723	73,497	8,500	4.3			-89.0	-88.4
Land & Waterways	2,289,419	2,104,207	2,206,597	549,878	96,666	49.2	-8.1	4.9	-75.1	-82.4
Land	2,144,009	1,960,011	2,049,748	498,384	96,478	49.1	-8.6	4.6	-75.7	-80.6
Waterways	145,410	144,196	156,849	51,494	188	0.1	-0.8	8.8	-67.2	-99.6
Total	5,602,157	6,201,077	6,610,592	1,306,143	196,495	100.0	10.7	6.6	-80.2	-85.0



Top Ten Generating Markets in 2015 - 2021

2015				
Rank		Arrivals	Share (%)	Change (%)
1	Vietnam	987,792	20.7	9.1
2	China (RPC)	694,712	14.5	24.0
3	Lao PDR	405,359	8.5	-11.9
4	Korea (ROK)	395,259	8.3	-6.9
5	Thailand	349,908	7.3	25.2
6	U.S.A	217,510	4.6	13.7
7	Japan	193,330	4.0	-10.4
8	U.K	154,265	3.2	15.7
9	Malaysia	149,389	3.1	3.4
10	France	145,724	3.1	3.3

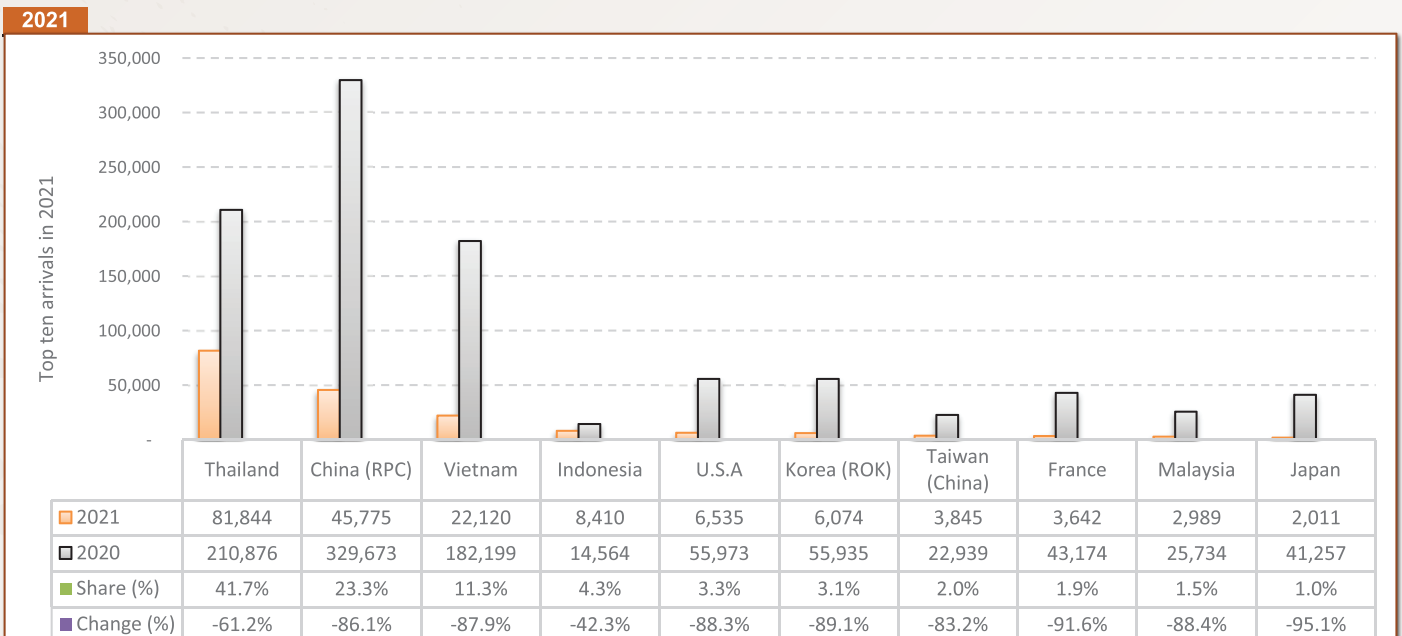
2016				
Rank		Arrivals	Share (%)	Change (%)
1	Vietnam	959,663	19.1	-2.8
2	China (RPC)	830,003	16.6	19.5
3	Thailand	398,081	7.9	13.8
4	Lao PDR	369,335	7.4	-8.9
5	Korea (ROK)	357,194	7.1	-9.6
6	U.S.A	238,658	4.8	9.7
7	Japan	191,577	3.8	-0.9
8	U.K	159,489	3.2	3.4
9	Malaysia	152,843	3.0	2.3
10	France	150,294	3.0	3.1

2017				
Rank		Arrivals	Share (%)	Change (%)
1	China (RPC)	1,210,782	21.6	45.9
2	Vietnam	835,355	14.9	-13.0
3	Lao PDR	502,219	9.0	36.0
4	Thailand	394,934	7.0	-0.8
5	Korea (ROK)	345,081	6.2	-3.4
6	U.S.A	256,544	4.6	7.5
7	Japan	203,373	3.6	6.2
8	Malaysia	179,316	3.2	17.3
9	U.K	171,162	3.1	7.3
10	France	166,356	3.0	10.7

2018				
Rank		Arrivals	Share (%)	Change (%)
1	China (RPC)	2,024,443	32.6	67.2
2	Vietnam	800,128	12.9	-4.2
3	Lao PDR	426,180	6.9	-15.1
4	Thailand	382,317	6.2	-3.2
5	Korea (ROK)	301,770	4.9	-12.6
6	U.S.A	250,813	4.0	-2.2
7	Japan	210,471	3.4	3.5
8	Malaysia	201,116	3.2	12.2
9	France	170,844	2.8	2.7
10	U.K	162,395	2.6	-5.1

2019				
Rank		Arrivals	Share (%)	Change (%)
1	China (RPC)	2,361,849	35.7	16.7
2	Vietnam	908,803	13.7	13.6
3	Thailand	466,493	7.1	22.0
4	Lao PDR	363,951	5.5	-14.6
5	Korea (ROK)	254,874	3.9	-15.5
6	U.S.A	248,863	3.8	-0.8
7	Japan	207,636	3.1	-1.3
8	Malaysia	203,008	3.1	0.9
9	France	164,117	2.5	-3.9
10	U.K	163,177	2.5	0.5

2020				
Rank		Arrivals	Share (%)	Change (%)
1	China (RPC)	329,673	25.2	-86.0
2	Thailand	210,876	16.1	-54.8
3	Vietnam	182,199	13.9	-80.0
4	U.S.A	55,973	4.3	-77.5
5	Korea (ROK)	55,935	4.3	-78.1
6	U.K	44,784	3.4	-72.6
7	France	43,174	3.3	-73.7
8	Japan	41,257	3.2	-80.1
9	Lao PDR	34,352	2.6	-90.6
10	Germany	27,280	2.1	-71.1



International Tourist Arrivals to Cambodia by International Border Check-points in 2021

No. International border check-points	Months													Share (%)
	Jan	Feb	Mar	Apr	May	Jun	Jul	Aug	Sep	Oct	Nov	Dec	TOTAL	
Grand Total	20,567	20,580	29,754	11,938	8,757	10,964	9,984	9,163	9,967	12,759	18,933	33,129	196,495	100.0
Air	7,841	7,902	17,792	4,811	3,565	4,338	5,480	5,337	5,984	6,363	10,661	19,755	99,829	50.8
Phnom Penh Int'l Airport	6,016	6,737	14,302	4,314	3,099	3,961	5,480	5,337	5,860	6,217	10,537	18,384	90,244	45.9
Siem Reap Int'l Airport	0	0	2	0	2	0	0	0	0	0	0	1,081	1,085	0.6
Kong Keng Int'l Airport	1,825	1,165	3,488	497	464	377	0	0	124	146	124	290	8,500	4.3
Lands and Waterways	12,726	12,678	11,962	7,127	5,192	6,626	4,504	3,826	3,983	6,396	8,272	13,374	96,666	49.2
Lands	12,726	12,678	11,962	7,125	5,192	6,626	4,504	3,826	3,983	6,396	8,264	13,196	96,478	49.1
Waterways	0	0	0	2	0	0	0	0	0	0	8	178	188	0.1
1 Cambodia - Thailand	12,557	11,495	10,636	6,366	4,505	5,760	3,993	3,815	3,955	5,368	4,055	6,833	79,338	40.4
Poi Pet	2	9	0	4	2	0	4	0	2	5	1	2	31	0.0
Cham Yeam	0	0	0	0	0	0	0	0	0	0	0	0	0	0.0
Prom	2,575	2,406	2,566	3,025	1,389	3,030	1,526	1,261	1,229	2,802	1,298	2,921	26,028	13.2
Daung	2,609	2,662	3,029	1,558	2,023	2,016	1,838	1,982	2,130	2,088	2,049	2,182	26,166	13.3
O'Smach	0	0	0	0	0	0	0	0	0	0	0	2	2	0.0
Chorm	0	0	0	0	0	0	0	0	0	0	0	0	0	0.0
Phnom Dei	7,371	6,418	5,041	1,779	1,091	714	625	572	594	473	707	1,726	27,111	13.8
Sihanoukville (Int'l sea port)	0	0	0	0	0	0	0	0	0	0	0	0	0	0.0
2 Cambodia - Vietnam	98	1,085	1,312	761	687	864	488	6	22	1,013	4,159	6,475	16,970	8.6
Bavet	53	470	749	465	310	270	84	0	1	426	2,811	5,156	10,795	5.5
Phnom Den	0	3	4	0	2	2	2	1	0	0	22	214	250	0.1
Trapaing Plong	6	8	52	41	78	458	371	0	0	327	875	344	2,560	1.3
Trapaing Sré	2	324	275	165	282	30	6	0	2	86	122	146	1,440	0.7
Prek Chak	2	2	9	0	0	6	9	0	0	3	39	91	161	0.1
Oya Dao	35	278	223	88	15	98	16	5	19	166	84	152	1,179	0.6
Banteay Chak Krey	0	0	0	0	0	0	0	0	0	0	5	35	40	0.0
Prey Vor	0	0	0	0	0	0	0	0	0	5	193	159	357	0.2
Kaam Samnor	0	0	0	0	0	0	0	0	0	0	0	145	145	0.1
Koh Rorka	0	0	0	2	0	0	0	0	0	0	8	33	43	0.0
Phnom Penh Port	0	0	0	0	0	0	0	0	0	0	0	0	0	0.0
3 Cambodia - Lao	71	98	14	0	0	2	23	5	6	15	58	66	358	0.2
Trapaing Kreal	71	98	14	0	0	2	23	5	6	15	58	66	358	0.2

International Tourist Arrivals to Cambodia by International Border Check-points in 2021
(by purposes of visit)

International Border No. Check-points	2020	2021				Share (%) 2021*	Change (%) 2021*/20
		Purposes of Visit			Total		
		Holiday	Business	Others			
Grand Total	1,306,143	96,137	91,138	9,220	196,495	100.0	-85.0
Air	756,265	11,139	80,759	7,931	99,829	50.8	-86.8
Phnom Penh Int'l Airport	441,851	10,048	72,305	7,891	90,244	45.9	-79.6
Siem Reap Int'l Airport	240,917	894	151	40	1,085	0.6	-99.5
Kong Keng Int'l Airport	73,497	197	8,303	0	8,500	4.3	-88.4
Lands and Waterways	549,878	84,998	10,379	1,289	96,666	49.2	-82.4
Lands	498,384	84,814	10,375	1,289	96,478	49.1	-80.6
Waterways	51,494	184	4	0	188	0.1	-99.6
1 Cambodia - Thailand	305,161	76,808	1,283	1,247	79,338	40.4	-74.0
Poi Pet	143,788	1	22	8	31	0.0	-100.0
Cham Yeam	10,009	0	0	0	0	0.0	-100.0
Prom	32,582	24,767	1,261	0	26,028	13.2	-20.1
Daung	49,008	26,166	0	0	26,166	13.3	-46.6
O'Smach	7,537	2	0	0	2	0.0	-100.0
Chorm	1,871	0	0	0	0	0.0	-100.0
Phnom Dei	32,722	25,872	0	1,239	27,111	13.8	-17.1
Sihanoukville (Int'l sea port)	27,644	0	0	0	0	0.0	-100.0
2 Cambodia - Vietnam	233,696	8,156	8,794	20	16,970	8.6	-92.7
Bavet	158,146	6,074	4,710	11	10,795	5.5	-93.2
Phnom Den	7,947	219	26	5	250	0.1	-96.9
Trapaing Plong	6,966	1,233	1,327	0	2,560	1.3	-63.3
Trapaing Sré	10,863	68	1,370	2	1,440	0.7	-86.7
Prek Chak	9,676	123	38	0	161	0.1	-98.3
Oya Dao	9,003	47	1,131	1	1,179	0.6	-86.9
Banteay Chak Krey	4,490	38	1	1	40	0.0	-99.1
Prey Vor	2,755	170	187	0	357	0.2	-87.0
Kaam Samnor	16,073	145	0	0	145	0.1	-99.1
Koh Rorka	2,698	39	4	0	43	0.0	-98.4
Phnom Penh Port	5,079	0	0	0	0	0.0	-100.0
3 Cambodia - Lao	11,021	34	302	22	358	0.2	-96.8
Trapaing Kreal	11,021	34	302	22	358	0.2	-96.8

Cambodia Outbound Tourists by Int'l Border Check-points in 2021

(by mode of transport and purposes of visit)

No. Check-points	International Border	2021				Total	Share	Change
		Purposes of Visit			Total		(%)	(%)
		Holiday	Business	Others			2021*	2021*/20
Grand Total	326,199	28,600	1,659	258	30,517	100.0	-90.6	
Air	124,339	27,847	946	0	28,793	94.4	-76.8	
Phnom Penh Int'l Airport (PNH)	116,539	27,586	940	0	28,526	93.5	-75.5	
Siem Reap Int'l Airport (REP)	6,431	32	2	0	34	0.1	-99.5	
Kong Keng (KOS)	1,369	229	4	0	233	0.8	-83.0	
Lands and Waterways	201,860	753	713	258	1,724	5.6	-99.1	
Land	199,001	753	713	258	1,724	5.6	-99.1	
Waterways	2,859	0	0	0	0	0.0	-100.0	
1 Cambodia - Thailand	154,099	675	2	258	935	3.1	-99.4	
Land	152,076	675	2	258	935	3.1	-99.4	
Poi Pet	88,183	586	2	258	846	2.8	-99.0	
Cham Yeam	13,240	0	0	0	0	0.0	-100.0	
Prom	18,596	0	0	0	0	0.0	-100.0	
Daung	8,012	22	0	0	22	0.1	-99.7	
O'Smach	15,068	67	0	0	67	0.2	-99.6	
Chorm	6,798	0	0	0	0	0.0	-100.0	
Phnom Dei	2,179	0	0	0	0	0.0	-100.0	
Waterways	2,023	0	0	0	0	0.0	-100.0	
Sihanouk Int'l Sea Port	2,023	0	0	0	0	0.0	-100.0	
2 Cambodia - Vietnam	46,835	23	705	0	728	2.4	-98.4	
Land	45,163	23	705	0	728	2.4	-98.4	
Bavet	37,002	6	696	0	702	2.3	-98.1	
Phnom Den	3,057	0	1	0	1	0.0	-100.0	
Trapaing Plong	1,733	0	0	0	0	0.0	-100.0	
Trapaing Sré	342	13	8	0	21	0.1	-93.9	
Prek Chak	1,609	4	0	0	4	0.0	-99.8	
Oya Dao	443	0	0	0	0	0.0	-100.0	
Banteay Chak Krey	815	0	0	0	0	0.0	-100.0	
Prey Vor	162	0	0	0	0	0.0	-100.0	
Waterways	836	0	0	0	0	0.0	-100.0	
Kaam Samnor	676	0	0	0	0	0.0	-100.0	
Koh Rorka	134	0	0	0	0	0.0	-100.0	
Phnom Penh Port	26	0	0	0	0	0.0	-100.0	
3 Cambodia - Lao	1,762	55	6	0	61	0.2	-96.5	
Trapaing Kreal	1,762	55	6	0	61	0.2	-96.5	

Cambodia Outbound Tourists by Months in 2009 - 2021

Months	Cambodia Outbound Tourists													Change (%)
	2009	2010	2011	2012	2013	2014	2015	2016	2017	2018	2019	2020	2021	2021*/20
Q1	61,450	106,095	137,317	188,267	201,544	208,972	246,912	328,347	368,345	456,876	308,350	308,350	5,509	-98.2
Jan	20,021	37,611	47,641	71,541	71,720	68,618	82,107	108,449	123,142	154,301	152,405	152,405	2,308	-98.5
Feb	19,871	32,818	42,124	59,042	65,259	67,924	77,358	115,962	121,874	146,448	106,132	106,132	1,375	-98.7
Mar	21,558	35,666	47,552	57,684	64,565	72,430	87,447	103,936	123,329	156,127	49,813	49,813	1,826	-96.3
Q2	84,606	126,222	155,716	200,680	239,748	245,814	306,102	371,307	473,663	524,371	548,191	2,817	5,029	78.5
Apr	29,481	46,323	52,138	70,738	81,998	90,794	106,444	133,574	176,871	212,661	203,488	1,081	1,460	35.1
May	30,699	42,055	52,907	63,872	83,715	84,366	108,225	127,260	154,811	158,498	182,390	853	1,680	97.0
Jun	24,426	37,844	50,671	66,070	74,035	70,654	91,433	110,473	141,981	153,212	162,313	883	1,889	113.9
Q3	91,132	134,978	216,150	196,378	203,101	252,793	311,223	359,867	477,464	495,231	526,149	6,335	6,521	2.9
Jul	25,746	44,290	64,015	65,590	67,758	85,357	96,692	115,403	156,701	140,724	166,379	2,501	1,951	-22.0
Aug	30,934	44,866	74,871	64,786	69,420	81,405	108,335	122,531	154,391	181,396	175,614	1,493	2,067	38.4
Sep	34,452	45,822	77,264	66,002	65,923	86,031	106,196	121,933	166,372	173,111	184,156	2,341	2,503	6.9
Q4	102,510	137,695	200,433	206,593	227,253	248,330	329,781	374,509	432,797	535,992	507,068	8,697	13,458	54.7
Oct	36,550	49,932	64,256	70,435	78,287	81,933	121,502	123,149	146,799	183,201	176,676	3,514	2,521	-28.3
Nov	31,857	43,981	66,045	69,977	76,657	86,560	108,859	123,723	146,254	171,628	164,608	3,192	4,219	32.2
Dec	34,103	43,782	70,132	66,181	72,309	79,837	99,420	127,637	139,744	181,163	165,784	1,991	6,718	237.4
Total	339,698	504,990	709,616	791,918	871,646	955,909	1,194,018	1,434,030	1,752,269	2,012,470	1,889,758	326,199	30,517	-90.6

International Outbound Tourist Departures by Int'l Border Check Points in 2021

(by mode of transport and purposes of visit)

No. Check-points	International Border	2020	2021			Total	Share	Change
			Purposes of Visit				(%)	(%)
			Holiday	Business	Others		2021*	2021*/20
Grand Total		1,367,253	87,381	85,969	10,258	183,608	100.0	-86.6
Air		860,291	8,989	78,252	7,868	95,109	51.8	-88.9
Phnom Penh Int'l Airport (PNH)		508,127	8,758	73,569	7,864	90,191	49.1	-82.3
Siem Reap Int'l Airport (REP)		264,252	160	25	4	189	0.1	-99.9
Kong Keng (KOS)		87,912	71	4,658	0	4,729	2.6	-94.6
Lands and Waterways		506,962	78,392	7,717	2,390	88,499	48.2	-82.5
Land		485,651	78,322	7,706	2,390	88,418	48.2	-81.8
Waterways		21,311	70	11	0	81	0.0	-99.6
1 Cambodia - Thailand		299,861	74,631	862	1,673	77,166	42.0	-74.3
Land		291,142	74,631	862	1,673	77,166	42.0	-73.5
Poi Pet		155,894	601	498	213	1,312	0.7	-99.2
Cham Yeam		12,342	22	154	0	176	0.1	-98.6
Prom		32,726	24,730	0	0	24,730	13.5	-24.4
Daung		48,453	24,107	20	3	24,130	13.1	-50.2
O'Smach		7,595	5	146	6	157	0.1	-97.9
Chorm		2,270	1	44	0	45	0.0	-98.0
Phnom Dei		31,862	25,165	0	1,451	26,616	14.5	-
Waterways		8,719	0	0	0	0	0.0	-100.0
Sihanouk Int'l Sea Port		8,719	0	0	0	0	0.0	-100.0
2 Cambodia - Vietnam		210,789	3,798	5,372	697	9,867	5.4	-95.3
Land		185,605	3,658	5,350	697	9,705	5.3	-94.8
Bavet		141,470	2,991	2,867	67	5,925	3.2	-95.8
Phnom Den		7,909	97	315	3	415	0.2	-94.8
Trapaing Plong		5,915	83	323	13	419	0.2	-92.9
Trapaing Sré		7,341	120	579	2	701	0.4	-90.5
Prek Chak		9,605	47	167	580	794	0.4	-91.7
Oya Dao		8,153	267	977	0	1,244	0.7	-84.7
Banteay Chak Krey		3,467	33	68	32	133	0.1	-96.2
Prey Vor		1,745	20	54	0	74	0.0	-95.8
Waterways		12,592	70	11	0	81	0.0	-99.4
Kaam Samnor		7,370	49	3	0	52	0.0	-99.3
Koh Rorka		931	12	8	0	20	0.0	-97.9
Phnom Penh Port		4,291	9	0	0	9	0.0	-99.8
3 Cambodia - Lao		8,904	33	1,494	20	1,547	0.8	-82.6
Trapaing Kreal		8,904	33	1,494	20	1,547	0.8	-82.6

International Outbound Tourist Departures by Months in 2012 - 2021

Months	International Outbound Tourist Departures										Change (%)	
	2012	2013	2014	2015	2016	2017	2018	2019	2020	2021	20/19	2021*/20
Q1	986,757	1,182,291	1,270,810	1,267,149	1,283,278	1,366,465	1,628,923	1,697,629	1,193,072	63,666	-29.7	-94.7
January	356,884	413,103	447,276	447,259	448,849	457,302	552,351	610,625	608,404	27,131	-0.4	-95.5
February	311,097	386,508	416,706	418,965	435,291	441,289	551,588	527,257	352,801	18,371	-33.1	-94.8
March	318,776	382,680	406,828	400,925	399,138	467,874	524,984	559,747	231,867	18,164	-58.6	-92.2
Q2	768,271	920,370	926,547	962,036	940,628	1,178,446	1,263,769	1,406,917	39,545	53,548	-97.2	35.4
April	275,739	323,714	319,318	337,825	331,549	397,797	454,736	471,400	13,366	17,082	-97.2	27.8
May	245,791	301,372	320,101	331,254	319,112	375,228	419,564	481,321	11,594	17,041	-97.6	47.0
June	246,741	295,284	287,128	292,957	289,967	405,421	389,469	454,196	14,585	19,425	-96.8	33.2
Q3	782,113	964,943	946,148	961,697	1,071,411	1,206,679	1,334,458	1,533,800	68,074	28,235	-95.6	-58.5
July	246,741	333,425	325,697	331,103	361,376	418,524	445,720	502,542	22,480	10,545	-95.5	-53.1
August	297,916	346,436	340,519	369,558	384,249	430,285	474,791	532,771	23,980	9,152	-95.5	-61.8
September	237,456	285,082	279,932	261,036	325,786	357,870	413,947	498,487	21,614	8,538	-95.7	-60.5
Q4	967,443	1,105,993	1,067,919	1,034,737	1,178,000	1,307,420	1,432,689	1,584,488	66,562	38,159	-95.8	-42.7
October	278,170	318,058	307,931	297,967	345,779	395,101	422,005	474,089	18,611	10,275	-96.1	-44.8
November	315,143	370,712	356,684	350,634	401,042	443,539	492,390	521,486	19,986	5,044	-96.2	-74.8
December	374,130	417,223	403,304	386,136	431,179	468,780	518,294	588,913	27,965	22,840	-95.3	-18.3
Total	3,504,584	4,173,597	4,211,424	4,225,619	4,473,317	5,059,010	5,659,839	6,222,834	1,367,253	183,608	-78.0	-86.6

SECTION I

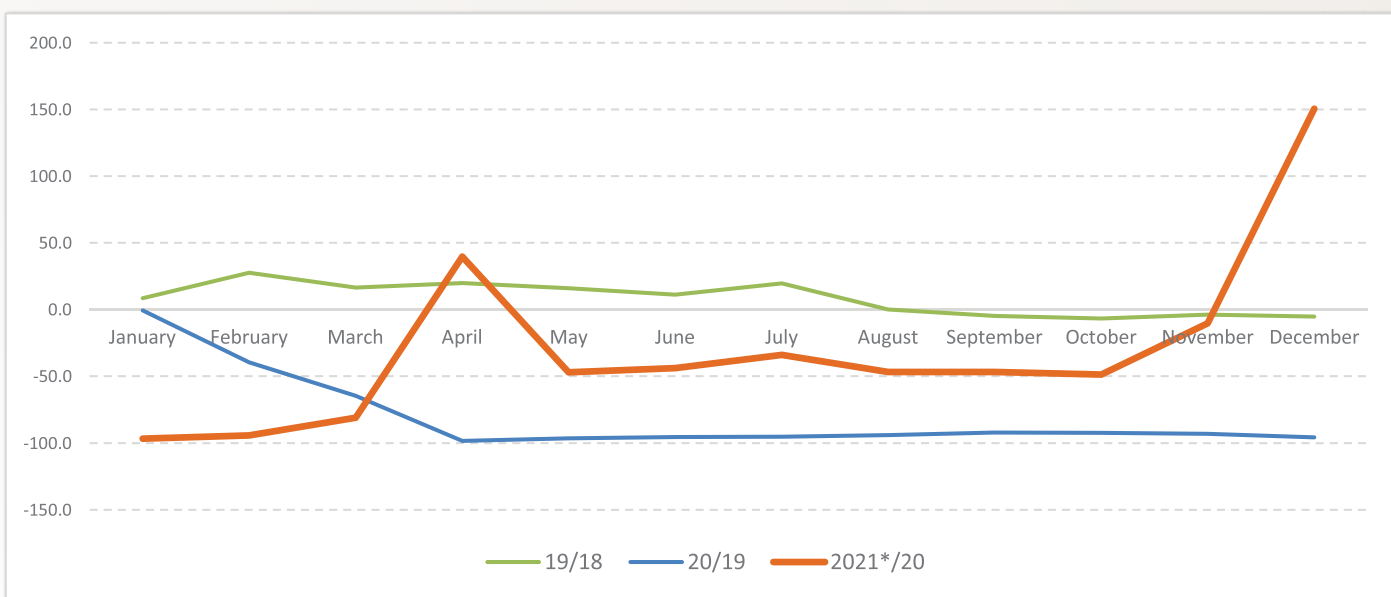
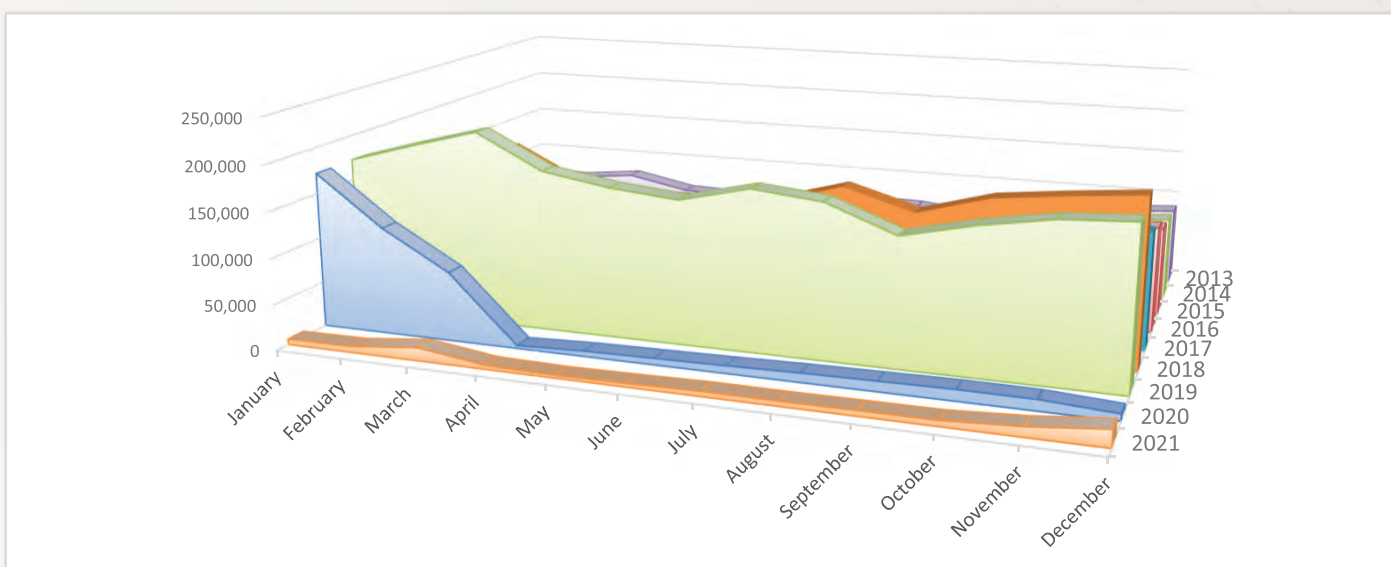
**PHNOM PENH INTERNATIONAL
AIRPORT**



Lonle Sap

Int'l Tourist Arrivals to Phnom Penh International Airport (PNH) by Months in 2013 - 2021

Months	2013	2014	2015	2016	2017	2018	2019	2020	2021	Change (%)		
										19/18	20/19	2021*/20
Q1	218,912	245,071	272,560	303,281	346,603	495,215	581,709	365,315	27,055	17.5	-37.2	-92.6
January	72,549	84,436	93,817	97,712	118,682	158,980	172,695	171,948	6,016	8.6	-0.4	-96.5
February	68,988	83,167	84,319	100,709	110,503	152,132	194,439	117,605	6,737	27.8	-39.5	-94.3
March	77,375	77,468	94,424	104,860	117,418	184,103	214,575	75,762	14,302	16.6	-64.7	-81.1
Q2	187,758	200,182	239,066	256,048	320,926	432,327	500,251	15,995	11,374	15.7	-96.8	-28.9
April	62,859	67,435	79,805	84,094	109,072	147,765	177,077	3,088	4,314	19.8	-98.3	39.7
May	60,880	64,217	79,166	83,697	104,084	142,286	164,985	5,857	3,099	16.0	-96.4	-47.1
June	64,019	68,530	80,095	88,257	107,770	142,276	158,189	7,050	3,961	11.2	-95.5	-43.8
Q3	193,961	217,489	265,480	274,857	359,191	464,217	485,967	29,351	16,677	4.7	-94.0	-43.2
July	68,078	76,980	93,931	97,789	126,733	147,577	176,454	8,311	5,480	19.6	-95.3	-34.1
August	66,865	73,895	92,880	90,387	121,631	169,125	169,073	10,012	5,337	0.0	-94.1	-46.7
September	59,018	66,614	78,669	86,681	110,827	147,515	140,440	11,028	5,860	-4.8	-92.1	-46.9
Q4	235,746	255,058	283,928	330,054	383,113	532,014	503,980	31,190	35,138	-5.3	-93.8	12.7
October	67,988	75,375	87,099	101,708	117,493	169,234	157,988	12,096	6,217	-6.6	-92.3	-48.6
November	81,430	87,488	97,726	111,098	136,034	177,774	170,858	11,758	10,537	-3.9	-93.1	-10.4
December	86,328	92,195	99,103	117,248	129,586	185,006	175,134	7,336	18,384	-5.3	-95.8	150.6
Total	836,377	917,800	1,061,034	1,164,240	1,409,833	1,923,773	2,071,907	441,851	90,244	7.7	-78.7	-79.6



International Tourist Arrivals to Phnom Penh International Airport (PNH) by Country of Residence in 2021

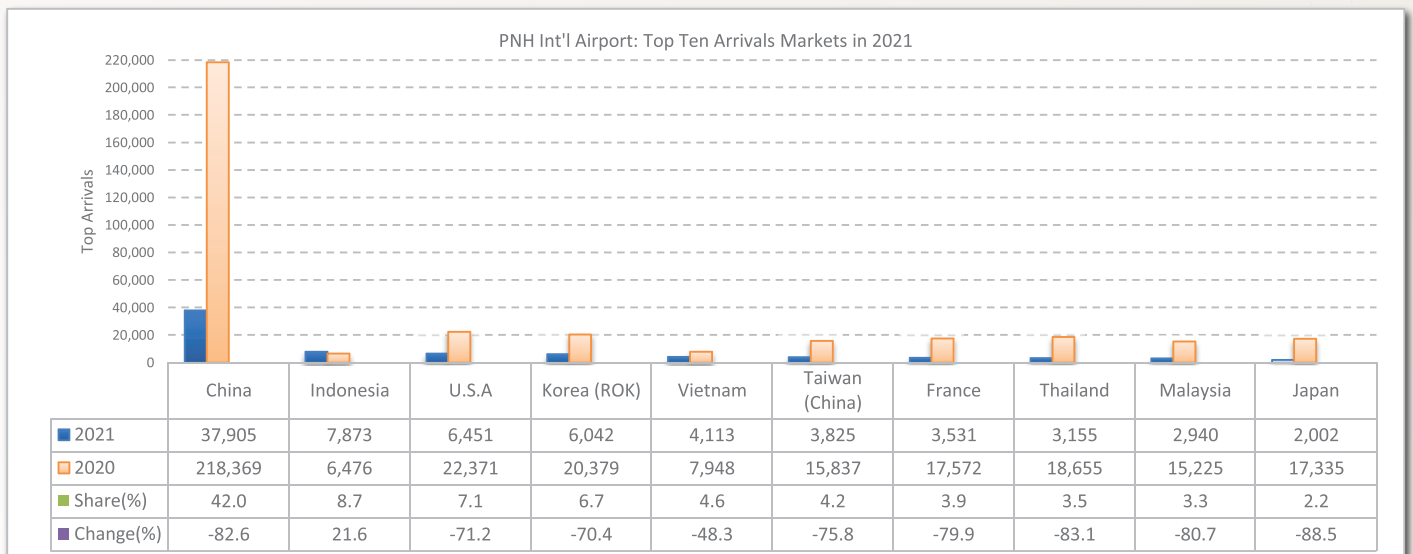
(by Air Only)

Regions Country of Residence	2021												Total	Share (%) 2021*
	Jan	Feb	Mar	Apr	May	Jun	Jul	Aug	Sep	Oct	Nov	Dec		
Grand Total	6,016	6,737	14,302	4,314	3,099	3,961	5,480	5,337	5,860	6,217	10,537	18,384	90,244	100.0
Asia and the Pacific	5,074	6,064	13,815	3,900	2,701	3,312	4,298	3,859	4,720	5,077	8,233	12,770	73,823	81.8
ASEAN (South-East Asia)	1,277	1,583	2,015	1,208	684	787	717	718	1,128	1,407	3,303	6,188	21,015	23.3
Brunei Darussalam	0	0	0	0	0	0	7	3	0	0	1	0	11	0.0
Indonesia	445	789	1,083	601	204	272	177	113	506	502	1,329	1,852	7,873	8.7
Lao PDR	1	1	0	0	0	1	1	5	7	5	70	27	118	0.1
Malaysia	143	167	172	146	119	134	122	162	169	359	540	707	2,940	3.3
Myanmar	28	6	13	19	32	49	40	26	57	24	65	123	482	0.5
Philippines	70	61	65	72	99	82	113	183	134	119	194	260	1,452	1.6
Singapore	38	47	40	17	29	40	30	41	36	47	153	352	870	1.0
Thailand	212	189	240	133	117	135	153	153	148	112	503	1,060	3,155	3.5
Timor Leste	0	0	0	0	0	0	0	0	0	0	1	0	1	0.0
Vietnam	340	323	402	220	84	74	74	32	71	239	447	1,807	4,113	4.6
North-East Asia	3,653	4,350	11,659	2,584	1,963	2,457	3,458	2,975	3,420	3,504	4,402	5,442	49,867	55.3
China	2,901	3,552	10,804	1,927	1,473	1,872	2,731	2,158	2,440	2,463	2,565	3,019	37,905	42.0
Hong Kong (China)	2	0	0	1	0	0	0	0	0	0	0	0	3	0.0
Japan	242	121	117	133	74	103	96	163	171	207	272	303	2,002	2.2
Korea (ROK)	394	380	334	256	195	257	338	380	438	445	1,115	1,510	6,042	6.7
Macau (China)	0	0	0	0	0	0	0	0	0	0	0	0	0	0.0
Mongolia	6	2	2	0	6	9	0	2	8	5	8	42	90	0.1
Taiwan (China)	108	295	402	267	215	216	293	272	363	384	442	568	3,825	4.2
Southern Asia	72	70	100	67	26	35	43	116	119	120	308	450	1,526	1.7
Afghanistan	0	1	0	0	0	0	0	0	0	0	44	39	84	0.1
Bangladesh	3	21	11	10	1	7	0	12	11	12	39	64	191	0.2
Bhutan	1	0	0	0	0	0	0	0	0	0	0	1	2	0.0
India	24	30	45	37	7	10	19	80	82	72	129	254	789	0.9
Iran	3	0	2	4	8	5	15	10	5	7	8	2	69	0.1
Nepal	2	1	5	3	1	0	0	0	6	15	38	29	100	0.1
Pakistan	4	6	12	3	0	8	4	6	7	3	18	28	99	0.1
Srilanka	35	11	25	10	9	5	5	8	8	11	32	33	192	0.2
Oceania	71	61	41	41	28	33	80	50	53	46	220	679	1,403	1.6
Australia	49	41	35	32	27	25	71	47	45	36	195	609	1,212	1.3
Fiji	0	0	0	0	0	0	1	0	1	0	0	1	3	0.0
New Zealand	22	20	6	9	1	8	8	3	7	10	25	69	188	0.2
Other Asia & the Pacific	1	0	0	0	0	0	0	0	0	0	0	11	12	0.0
Europe	473	273	245	205	152	282	609	949	594	575	1,080	3,168	8,605	9.5
Northern Europe	96	52	52	34	34	57	163	160	76	102	247	622	1,695	1.9
Denmark	8	5	10	1	1	2	6	22	6	2	16	38	117	0.1
Finland	4	1	1	0	0	1	3	18	3	6	13	36	86	0.1
Iceland	0	0	0	0	0	0	1	0	0	0	2	0	3	0.0
Ireland	4	4	1	1	3	2	8	4	2	1	9	42	81	0.1
Norway	0	2	2	1	0	1	3	9	1	1	15	29	64	0.1
Sweden	9	3	6	5	2	3	32	19	11	6	21	63	180	0.2
United Kingdom	71	37	32	26	28	48	110	88	53	86	171	414	1,164	1.3
Western Europe	318	167	135	132	90	160	311	629	389	376	674	1,982	5,363	5.9
Austria	6	1	0	1	0	3	3	6	5	6	15	43	89	0.1
Belgium	10	1	10	6	1	3	10	19	9	12	23	104	208	0.2
France	215	123	65	76	67	99	222	494	260	221	469	1,220	3,531	3.9
Germany	56	28	40	31	15	44	52	71	69	68	93	330	897	1.0
Luxembourg	0	0	0	0	0	1	0	2	0	2	1	3	9	0.0
Monaco	0	0	0	0	0	0	0	0	0	0	0	0	0	0.0
Netherlands	11	4	11	15	3	4	13	17	21	32	29	130	290	0.3
Switzerland	20	10	9	3	4	6	11	20	25	35	44	152	339	0.4
Central / Eastern Europe	26	36	23	24	17	48	68	82	70	43	81	336	854	0.9
Bulgaria	1	2	1	0	1	0	4	0	1	0	0	15	25	0.0
Czech Republic	2	4	2	0	1	1	4	9	1	1	5	40	70	0.1
Estonia	0	0	0	0	0	0	0	0	1	0	0	10	11	0.0
Hungary	2	1	0	2	2	0	6	2	1	0	0	19	35	0.0
Kazakhstan	5	3	0	1	1	2	8	6	15	7	9	12	69	0.1
Kyrgyzstan	0	0	0	0	0	0	12	7	2	3	2	1	27	0.0
Latvia	0	1	0	0	0	0	0	0	0	0	1	1	3	0.0
Lithuania	0	0	0	0	0	0	0	2	0	0	1	5	8	0.0
Poland	5	5	1	6	2	3	1	6	6	15	10	39	99	0.1
Romania	4	3	2	0	2	2	4	8	3	3	7	16	54	0.1
Russian Federation	3	10	13	10	7	29	25	32	30	9	35	142	345	0.4
Slovakia	3	1	1	1	0	0	0	1	0	0	2	5	14	0.0
Ukraine	1	6	3	2	0	8	1	9	7	5	7	20	69	0.1
Uzbekistan	0	0	0	2	1	3	3	0	3	0	2	11	25	0.0
Southern Europe	24	17	27	11	10	14	50	73	49	46	63	161	545	0.6
Croatia	0	0	2	1	2	0	2	2	0	0	3	6	18	0.0
Greece	0	1	1	1	0	0	1	1	3	0	2	6	16	0.0
Italy	12	11	13	4	4	5	29	40	21	27	30	83	279	0.3
Malta	0	0	0	0	0	0	0	0	0	2	0	0	2	0.0
Portugal	3	1	3	2	1	1	4	1	5	4	9	6	40	0.0
Serbia	0	1	3	0	1	2	0	8	1	0	0	2	18	0.0
Slovenia	0	0	0	1	1	4	0	0	0	1	1	9	17	0.0
Spain	9	3	5	2	1	2	14	21	19	12	18	49	155	0.2

International Tourist Arrivals to Phnom Penh International Airport (PNH) by Country of Residence in 2021

(by Air Only)

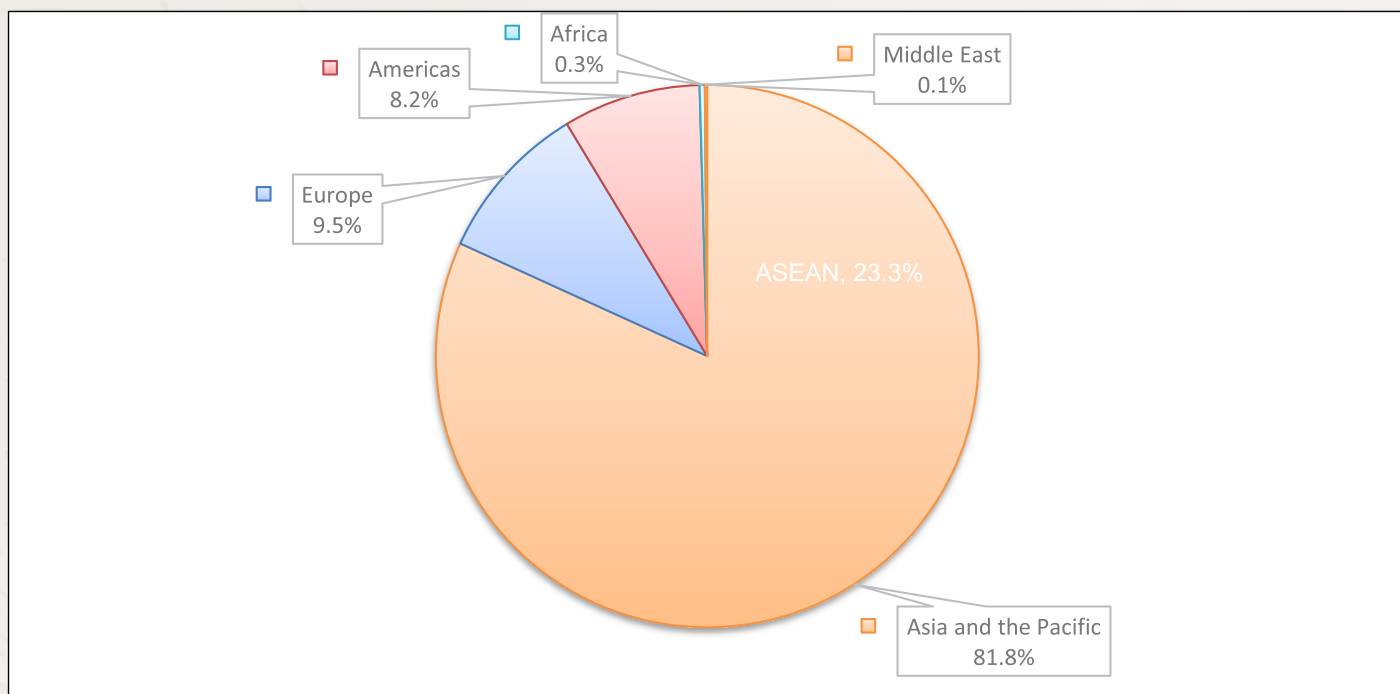
Regions Country of Residence	2021												Total	Share (%) 2021*
	Jan	Feb	Mar	Apr	May	Jun	Jul	Aug	Sep	Oct	Nov	Dec		
Grand Total	6,016	6,737	14,302	4,314	3,099	3,961	5,480	5,337	5,860	6,217	10,537	18,384	90,244	100.0
East Mediterranean Europe	9	1	8	4	1	3	17	5	10	8	15	51	132	0.1
Israel	1	0	3	1	0	3	3	3	2	4	9	28	57	0.1
Turkey	8	1	5	3	1	0	14	2	8	4	6	23	75	0.1
Other Europe	0	0	0	0	0	0	0	0	0	0	0	16	16	0.0
Americas	432	365	221	169	224	346	548	493	518	533	1,189	2,362	7,400	8.2
North America	424	348	220	167	221	342	525	481	512	528	1,183	2,330	7,281	8.1
Canada	35	37	31	9	8	17	45	45	48	84	174	227	760	0.8
Mexico	0	3	3	4	3	2	9	17	10	5	6	8	70	0.1
United States of America	389	308	186	154	210	323	471	419	454	439	1,003	2,095	6,451	7.1
Central America	0	0	0	2	0	0	0	0	0	0	0	0	2	0.0
Costa Rica	0	0	0	0	0	0	0	0	0	0	0	0	0	0.0
Honduras	0	0	0	1	0	0	0	0	0	0	0	0	1	0.0
Jamaica	0	0	0	1	0	0	0	0	0	0	0	0	1	0.0
South America	8	17	1	0	3	4	23	12	6	5	6	22	107	0.1
Argentina	0	2	0	0	0	0	0	0	3	0	0	3	8	0.0
Brazil	5	9	1	0	2	4	12	7	1	1	1	9	52	0.1
Chile	0	1	0	0	0	0	1	0	0	0	1	1	4	0.0
Colombia	1	2	0	0	1	0	8	4	2	2	1	7	28	0.0
Ecuador	1	1	0	0	0	0	0	1	0	0	0	0	3	0.0
Peru	0	0	0	0	0	0	0	0	0	0	0	0	0	0.0
Uruguay	1	1	0	0	0	0	0	0	0	0	1	0	3	0.0
Venezuela	0	1	0	0	0	0	2	0	0	2	2	2	9	0.0
Other America	0	0	0	0	0	0	0	0	0	0	0	10	10	0.0
Africa	23	26	19	26	12	14	22	30	19	23	26	43	283	0.3
North Africa	3	0	2	0	1	0	0	5	2	2	2	6	23	0.0
Morocco	1	0	2	0	1	0	0	0	0	1	0	2	7	0.0
Sudan	0	0	0	0	0	0	0	4	2	1	1	0	8	0.0
Tunisia	2	0	0	0	0	0	0	1	0	0	1	4	8	0.0
Subsaharan Africa	20	26	17	26	11	14	22	25	17	21	24	24	247	0.3
Cameroon	2	1	0	0	1	1	0	0	2	4	0	3	14	0.0
Congo	0	0	0	0	0	0	0	0	0	0	0	0	0	0.0
Ghana	0	0	0	0	0	0	1	0	0	0	0	1	2	0.0
Kenya	2	3	6	0	0	0	0	3	1	0	1	2	18	0.0
Liberia	0	0	0	0	0	0	0	1	0	1	0	0	2	0.0
Nigeria	4	9	7	6	3	4	4	3	2	5	4	6	57	0.1
South Africa	10	11	3	13	7	9	16	16	9	4	19	11	128	0.1
Tanzania	0	1	0	1	0	0	0	0	0	2	0	0	4	0.0
Uganda	1	0	1	6	0	0	0	0	2	0	0	0	10	0.0
Zimbabwe	1	1	0	0	0	0	1	2	1	5	0	1	12	0.0
Other Africa	0	0	0	0	0	0	0	0	0	0	0	13	13	0.0
Middle East	14	9	2	14	10	7	3	6	9	9	9	41	133	0.1
Egypt	2	1	0	1	2	0	1	1	4	2	3	16	33	0.0
Iraq	0	1	0	1	0	0	0	1	0	2	0	3	8	0.0
Jordan	0	3	1	0	3	1	0	1	4	2	3	9	27	0.0
Kuwait	1	2	0	0	0	1	0	1	1	2	1	3	12	0.0
Oman	1	0	0	0	0	0	0	0	0	0	0	1	2	0.0
Palestine	0	0	0	0	0	0	0	0	0	0	0	2	2	0.0
Qatar	0	1	0	0	0	0	0	0	0	0	0	1	2	0.0
Saudi Arabia	0	0	0	0	0	0	0	2	0	1	0	3	6	0.0
Syria	0	1	0	1	0	0	1	0	0	0	0	3	6	0.0
United Arab Emirates	10	0	1	11	5	2	1	0	0	0	0	0	30	0.0
Yemen	0	0	0	0	0	3	0	0	0	0	2	0	5	0.0
Other Middle East	0	0	0	0	0	0	0	0	0	0	0	0	0	0.0



Int'l Tourist Arrivals to Phnom Penh International Airport (PNH) by Regions in 2021

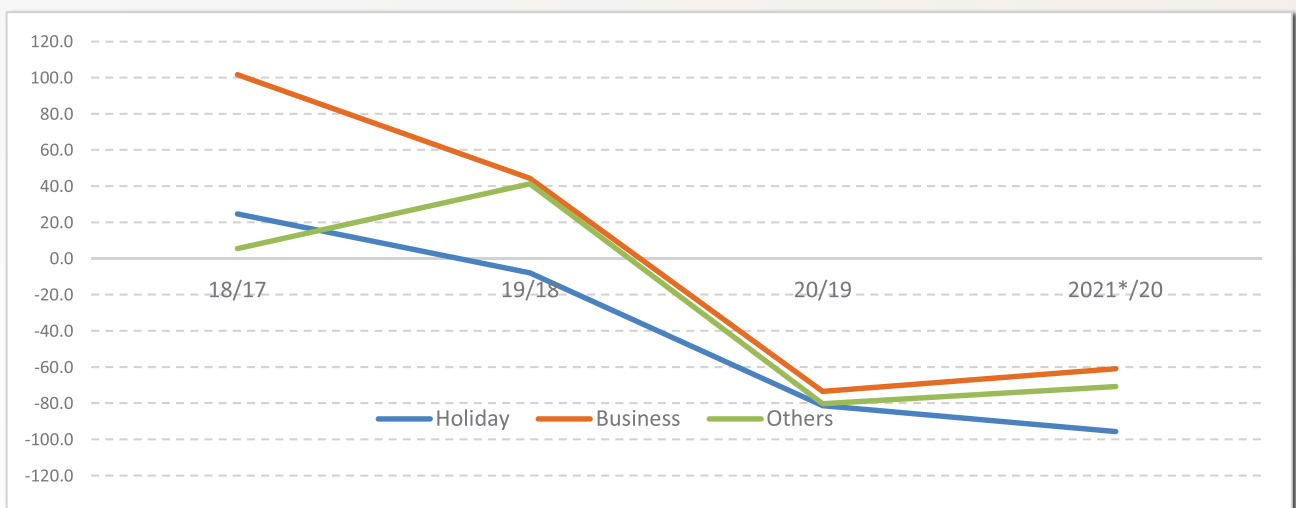
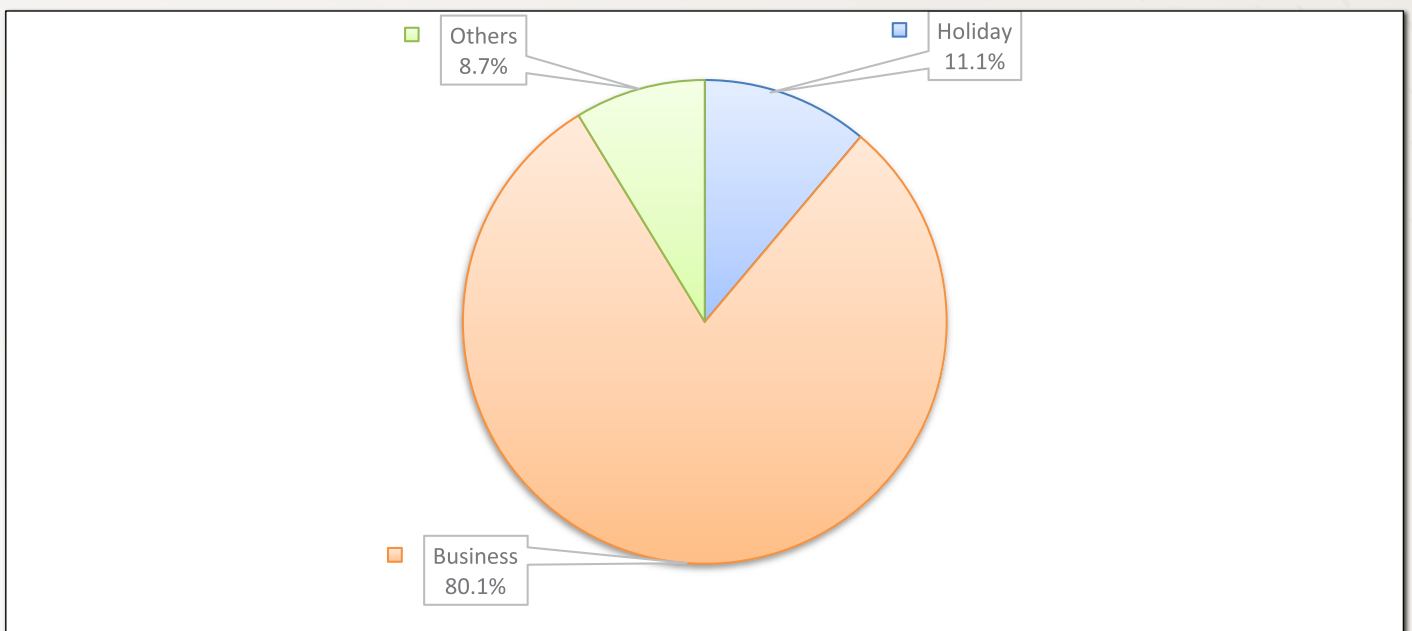
Months	Asia and the Pacific		Europe	Americas	Africa	Middle East	Total
		ASEAN					
Q1	24,953	4,875	991	1,018	68	25	27,055
January	5,074	1,277	473	432	23	14	6,016
February	6,064	1,583	273	365	26	9	6,737
March	13,815	2,015	245	221	19	2	14,302
Q2	9,913	2,679	639	739	52	31	11,374
April	3,900	1,208	205	169	26	14	4,314
May	2,701	684	152	224	12	10	3,099
June	3,312	787	282	346	14	7	3,961
Q3	12,877	2,563	2,152	1,559	71	18	16,677
July	4,298	717	609	548	22	3	5,480
August	3,859	718	949	493	30	6	5,337
September	4,720	1,128	594	518	19	9	5,860
Q4	26,080	10,898	4,823	4,084	92	59	35,138
October	5,077	1,407	575	533	23	9	6,217
November	8,233	3,303	1,080	1,189	26	9	10,537
December	12,770	6,188	3,168	2,362	43	41	18,384
Total	73,823	21,015	8,605	7,400	283	133	90,244
share (%)	81.8%	23.3%	9.5%	8.2%	0.3%	0.1%	100.0%

Note: 10 countries of ASEAN were included in Asia and the Pacific.



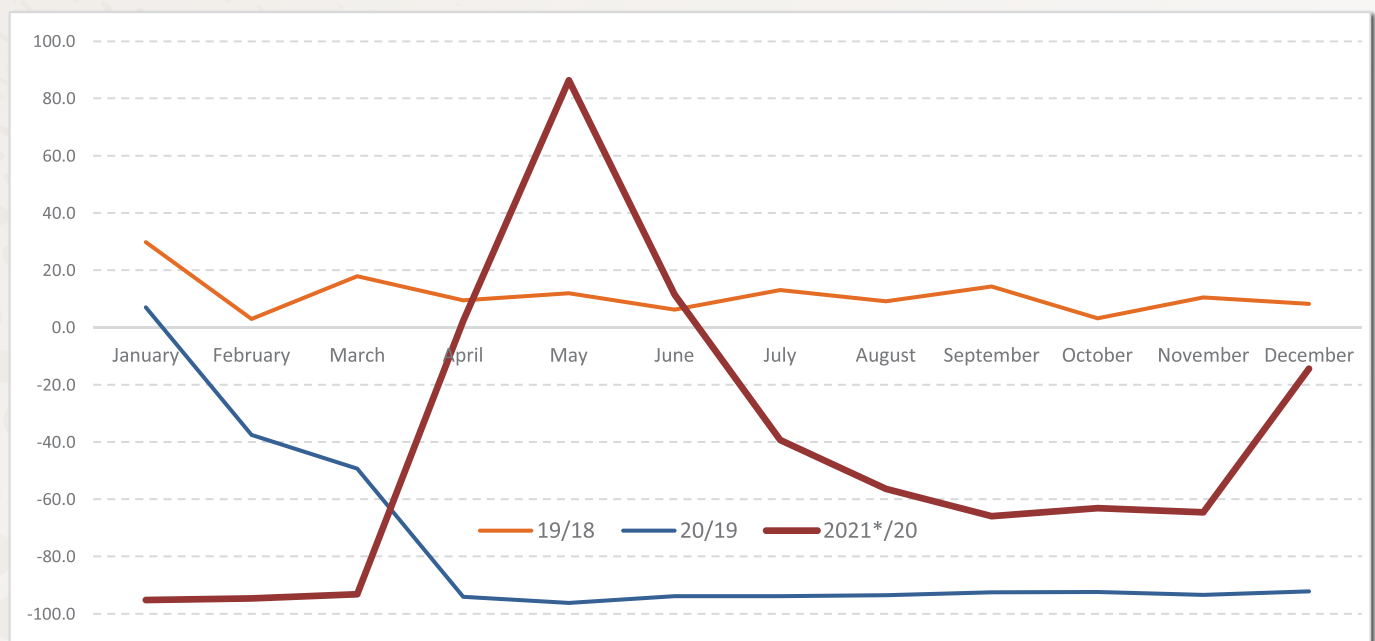
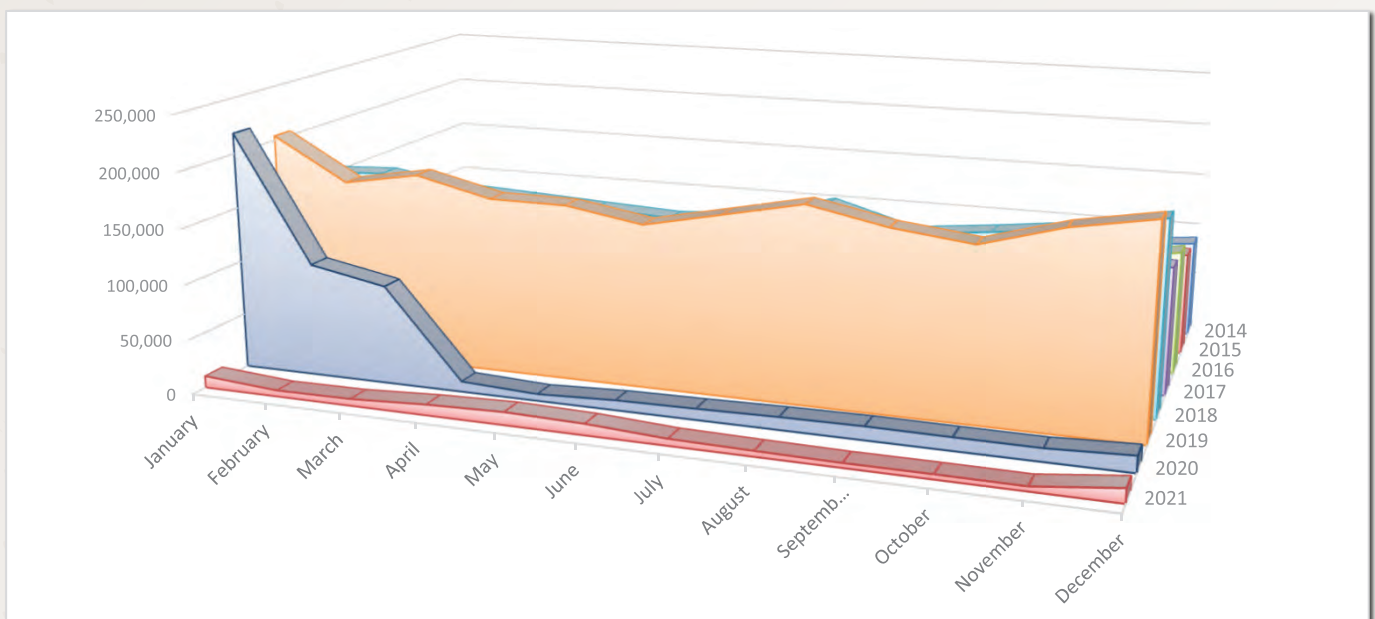
International Tourist Arrivals to Phnom Penh International Airport by Purposes of Visit in 2014 - 2021

Purposes of Visit	Int'l tourist arrivals									Change (%)		
	2014	2015	2016	2017	2018	2019	2020	2021	19/18	20/19	2021*/20	
Total	917,800	1,061,034	1,164,240	1,409,833	1,923,773	2,071,907	441,851	90,244	7.7	-78.7	-79.6	
Holiday	754,026	856,181	853,704	1,078,041	1,343,310	1,237,082	229,698	10,048	-7.9	-81.4	-95.6	
Business	153,332	181,170	207,144	239,814	483,424	697,642	185,102	72,305	44.3	-73.5	-60.9	
Others	10,442	23,683	103,392	91,978	97,039	137,183	27,051	7,891	41.4	-80.3	-70.8	
Q1	245,071	272,560	303,281	346,603	495,215	581,709	365,315	27,055	17.5	-37.2	-92.6	
Holiday	200,440	224,834	224,877	270,099	376,198	377,566	224,837	379	0.4	-40.5	-99.8	
Business	41,132	40,867	52,337	51,826	93,002	172,160	117,432	25,484	85.1	-31.8	-78.3	
Others	3,499	6,859	26,067	24,678	26,015	31,983	23,046	1,192	22.9	-27.9	-94.8	
Q2	200,182	239,066	256,048	320,926	432,327	500,251	15,995	11,374	15.7	-96.8	-28.9	
Holiday	161,187	189,202	180,202	237,317	292,733	278,289	2,542	393	-4.9	-99.1	-84.5	
Business	36,056	45,131	51,569	60,653	116,753	190,599	13,022	10,285	63.2	-93.2	-21.0	
Others	2,939	4,733	24,277	22,956	22,841	31,363	431	696	37.3	-98.6	61.5	
Q3	217,489	265,480	274,857	359,191	464,217	485,967	29,351	16,677	4.7	-94.0	-43.2	
Holiday	179,270	212,618	201,163	265,053	312,737	267,790	1,425	90	-14.4	-99.5	-93.7	
Business	35,908	47,617	49,927	70,333	130,431	182,073	26,281	15,002	39.6	-85.6	-42.9	
Others	2,311	5,245	23,767	23,805	21,049	36,104	1,645	1,585	71.5	-95.4	-3.6	
Q4	255,058	283,928	330,054	383,113	532,014	503,980	31,190	35,138	-5.3	-93.8	12.7	
Holiday	213,129	229,527	247,462	305,572	361,642	313,437	894	9,186	-13.3	-99.7	927.5	
Business	40,236	47,555	53,311	57,002	143,238	152,810	28,367	21,534	6.7	-81.4	-24.1	
Others	1,693	6,846	29,281	20,539	27,134	37,733	1,929	4,418	39.1	-94.9	129.0	



Int'l Tourist Departures from Phnom Penh International Airport (PNH) by Months in 2014 - 2021

Months	Int'l Tourist Departures								Change (%)		
	2014	2015	2016	2017	2018	2019	2020	2021	19/18	20/19	2021*/20
Q1	234,594	285,257	302,827	355,700	467,619	546,355	411,247	22,352	16.8	-24.7	-94.6
January	80,190	97,780	107,103	129,836	157,081	204,007	218,323	10,665	29.9	7.0	-95.1
February	75,128	95,250	100,297	107,684	160,252	165,146	103,076	5,544	3.1	-37.6	-94.6
March	79,276	92,227	95,427	118,180	150,286	177,202	89,848	6,143	17.9	-49.3	-93.2
Q2	198,771	243,248	257,965	320,714	430,803	470,545	24,754	31,395	9.2	-94.7	26.8
April	68,184	83,651	86,856	111,398	147,014	160,865	9,430	9,649	9.4	-94.1	2.3
May	67,435	82,458	85,650	104,140	143,483	160,604	6,229	11,611	11.9	-96.1	86.4
June	63,152	77,139	85,459	105,176	140,306	149,076	9,095	10,135	6.3	-93.9	11.4
Q3	205,800	260,703	275,775	346,284	453,104	507,628	33,833	15,311	12.0	-93.3	-54.7
July	67,864	86,639	90,880	114,954	144,978	163,968	10,095	6,127	13.1	-93.8	-39.3
August	74,643	98,306	97,986	125,664	164,045	178,952	11,493	5,007	9.1	-93.6	-56.4
September	63,293	75,758	86,909	105,666	144,081	164,708	12,245	4,177	14.3	-92.6	-65.9
Q4	241,036	271,166	305,142	350,032	487,313	523,354	38,293	21,133	7.4	-92.7	-44.8
October	66,291	81,420	89,509	113,079	151,572	156,451	11,833	4,365	3.2	-92.4	-63.1
November	84,093	94,521	101,555	120,314	160,222	177,026	11,708	4,145	10.5	-93.4	-64.6
December	90,652	95,225	114,078	116,639	175,519	189,877	14,752	12,623	8.2	-92.2	-14.4
Total	880,201	1,060,374	1,141,709	1,372,730	1,838,839	2,047,882	508,127	90,191	11.4	-75.2	-82.3



SECTION II

**SIEM REAP INTERNATIONAL
AIRPORT**

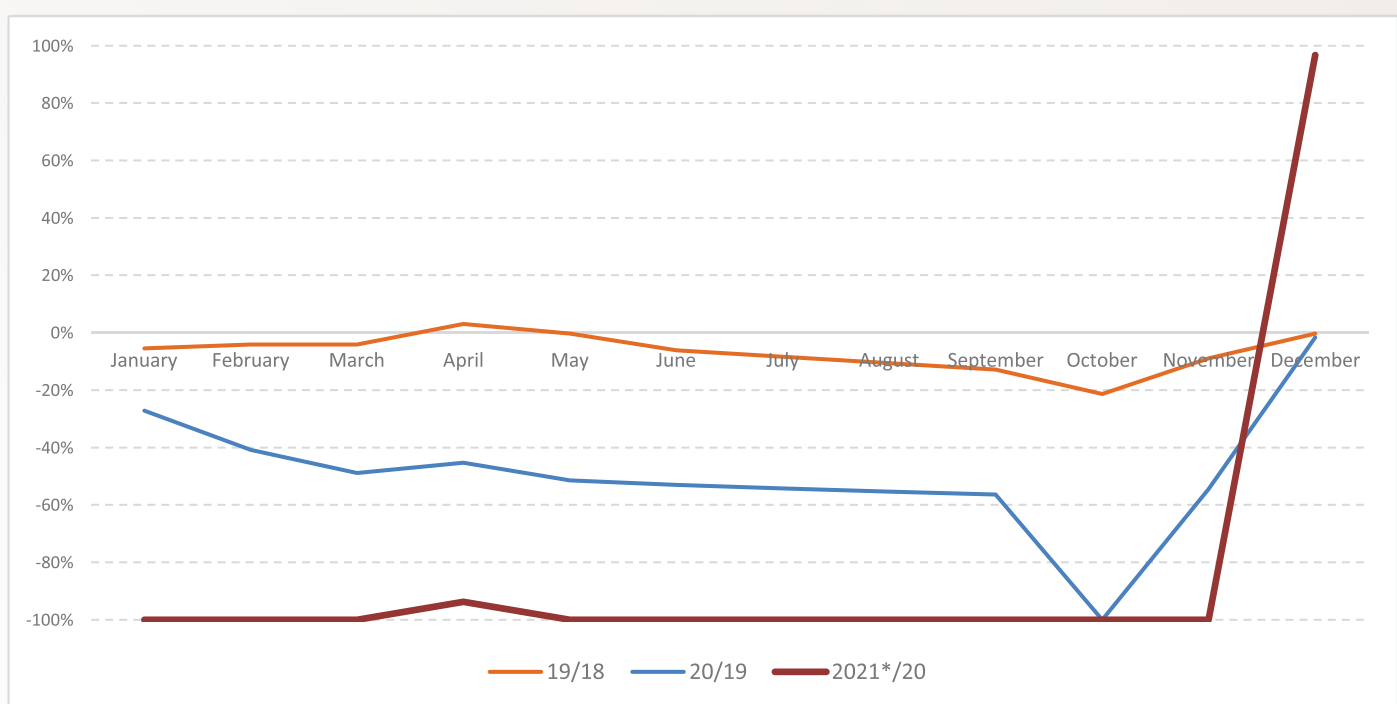
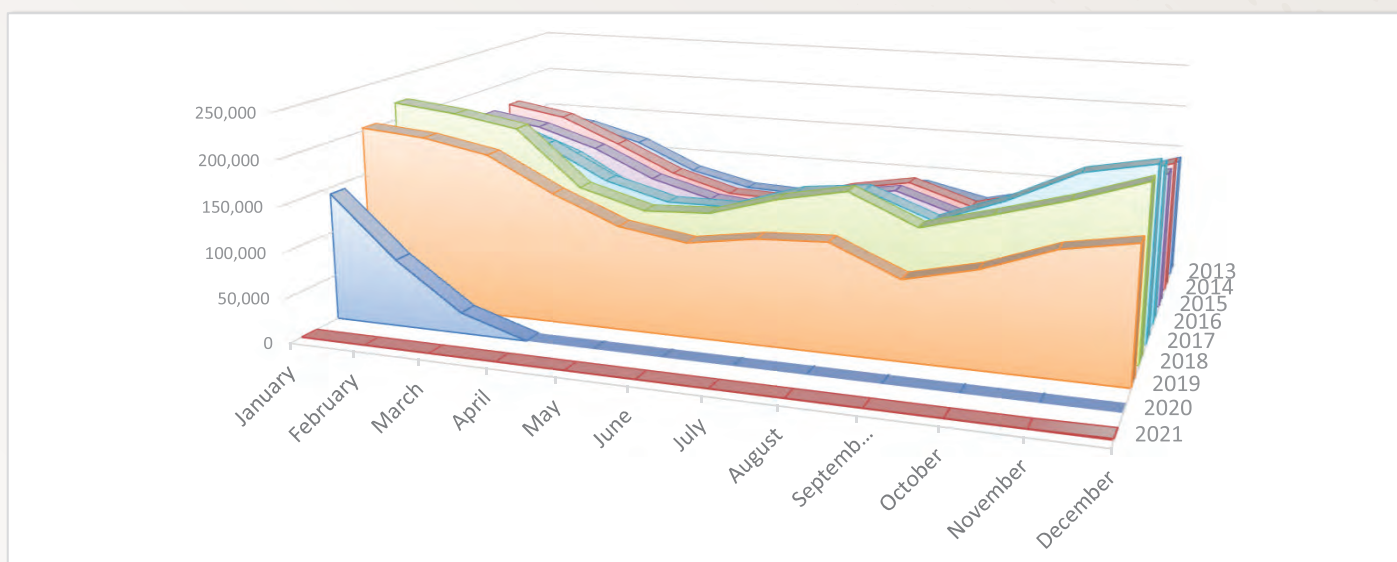


Wat Sampov Pram

International Tourist Arrivals to Siem Reap International Airport (REP) by Months in 2013 - 2021

(by Air only)

Months	2013	2014	2015	2016	2017	2018	2019	2020	2021	Change (%)		
										19/18	20/19	2021*/20
Q1	392,248	453,898	460,908	479,395	552,477	631,444	583,879	240,785	2	-7.5	-58.8	-100.0
January	142,661	169,494	168,539	173,825	201,347	219,868	203,270	142,777	0	-7.5	-29.8	-100.0
February	134,465	157,439	157,436	165,871	184,112	211,920	197,172	74,961	0	-7.0	-62.0	-100.0
March	115,122	126,965	134,933	139,699	167,018	199,656	183,437	23,047	2	-8.1	-87.4	-100.0
Q2	210,297	238,033	258,363	262,276	351,907	375,060	367,474	92	2	-2.0	-100.0	-97.8
April	82,489	93,885	101,669	99,012	130,003	137,357	146,195	26	0	6.4	-100.0	-100.0
May	65,375	73,215	81,837	81,096	110,706	116,930	116,193	38	2	-0.6	-100.0	-94.7
June	62,433	70,933	74,857	82,168	111,198	120,773	105,086	28	0	-13.0	-100.0	-100.0
Q3	234,051	279,983	298,287	315,794	393,967	425,995	325,048	7	0	-23.7	-100.0	-100.0
July	76,571	92,371	99,708	111,266	135,281	142,832	116,564	3	0	-18.4	-100.0	-100.0
August	87,040	105,762	111,396	112,271	143,405	158,022	120,337	2	0	-23.8	-100.0	-100.0
September	70,440	81,850	87,183	92,257	115,281	125,141	88,147	2	0	-29.6	-100.0	-100.0
Q4	344,685	383,779	397,409	449,574	522,336	507,051	388,964	33	1,081	-23.3	-100.0	3175.8
October	88,072	100,721	104,503	116,182	144,315	145,818	106,264	0	0	-27.1	-100.0	-100.0
November	115,979	129,637	136,952	153,090	181,471	167,666	134,561	19	0	-19.7	-100.0	-100.0
December	140,634	153,421	155,954	180,302	196,550	193,567	148,139	14	1,081	-23.5	-100.0	7621.4
Total	1,181,281	1,355,693	1,414,967	1,507,039	1,820,687	1,939,550	1,665,365	240,917	1,085	-14.1	-85.5	-99.5



International Tourist Arrivals to Siem Reap International Airport (REP) by Country of Residence in 2021

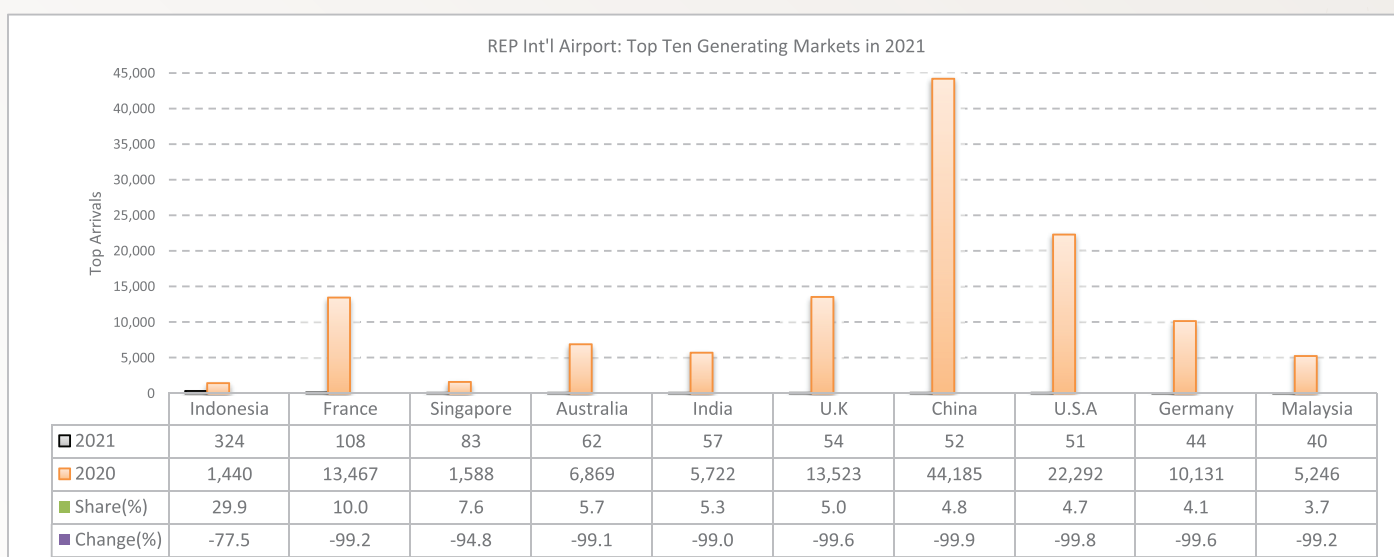
(by Air Only)

Regions Country of Residence	2021												Total	Share (%) 2021*	
	Jan	Feb	Mar	Apr	May	Jun	Jul	Aug	Sep	Oct	Nov	Dec			
Grand Total	0	0	2	0	2	0	0	0	0	0	0	0	1,081	1,085	100.0
Asia and the Pacific	0	0	2	0	2	0	0	0	0	0	0	0	676	680	62.7
ASEAN (South-East Asia)	0	0	2	0	2	0	0	0	0	0	0	0	464	468	43.1
Brunei Darussalam	0	0	0	0	0	0	0	0	0	0	0	0	0	0	0.0
Indonesia	0	0	0	0	0	0	0	0	0	0	0	0	324	324	29.9
Lao PDR	0	0	0	0	0	0	0	0	0	0	0	0	0	0	0.0
Malaysia	0	0	0	0	0	0	0	0	0	0	0	0	40	40	3.7
Myanmar	0	0	0	0	0	0	0	0	0	0	0	0	2	2	0.2
Philippines	0	0	0	0	0	0	0	0	0	0	0	0	8	8	0.7
Singapore	0	0	0	0	0	0	0	0	0	0	0	0	83	83	7.6
Thailand	0	0	2	0	2	0	0	0	0	0	0	0	3	7	0.6
Timor Leste	0	0	0	0	0	0	0	0	0	0	0	0	0	0	0.0
Vietnam	0	0	0	0	0	0	0	0	0	0	0	0	4	4	0.4
North-East Asia	0	0	0	0	0	0	0	0	0	0	0	0	71	71	6.5
China	0	0	0	0	0	0	0	0	0	0	0	0	52	52	4.8
Hong Kong (China)	0	0	0	0	0	0	0	0	0	0	0	0	0	0	0.0
Japan	0	0	0	0	0	0	0	0	0	0	0	0	6	6	0.6
Korea (ROK)	0	0	0	0	0	0	0	0	0	0	0	0	5	5	0.5
Macau (China)	0	0	0	0	0	0	0	0	0	0	0	0	0	0	0.0
Mongolia	0	0	0	0	0	0	0	0	0	0	0	0	0	0	0.0
Taiwan (China)	0	0	0	0	0	0	0	0	0	0	0	0	8	8	0.7
Southern Asia	0	0	0	0	0	0	0	0	0	0	0	0	68	68	6.3
Afghanistan	0	0	0	0	0	0	0	0	0	0	0	0	1	1	0.1
Bangladesh	0	0	0	0	0	0	0	0	0	0	0	0	4	4	0.4
Bhutan	0	0	0	0	0	0	0	0	0	0	0	0	0	0	0.0
India	0	0	0	0	0	0	0	0	0	0	0	0	57	57	5.3
Iran	0	0	0	0	0	0	0	0	0	0	0	0	1	1	0.1
Nepal	0	0	0	0	0	0	0	0	0	0	0	0	1	1	0.1
Pakistan	0	0	0	0	0	0	0	0	0	0	0	0	0	0	0.0
Sri Lanka	0	0	0	0	0	0	0	0	0	0	0	0	4	4	0.4
Oceania	0	0	0	0	0	0	0	0	0	0	0	0	73	73	6.7
Australia	0	0	0	0	0	0	0	0	0	0	0	0	62	62	5.7
Fiji	0	0	0	0	0	0	0	0	0	0	0	0	0	0	0.0
New Zealand	0	0	0	0	0	0	0	0	0	0	0	0	11	11	1.0
Other Asia & the Pacific	0	0	0	0	0	0	0	0	0	0	0	0	0	0	0.0
Europe	0	0	0	0	0	0	0	0	0	0	0	0	330	330	30.4
Northern Europe	0	0	0	0	0	0	0	0	0	0	0	0	73	73	6.7
Denmark	0	0	0	0	0	0	0	0	0	0	0	0	7	7	0.6
Finland	0	0	0	0	0	0	0	0	0	0	0	0	0	0	0.0
Iceland	0	0	0	0	0	0	0	0	0	0	0	0	0	0	0.0
Ireland	0	0	0	0	0	0	0	0	0	0	0	0	1	1	0.1
Norway	0	0	0	0	0	0	0	0	0	0	0	0	4	4	0.4
Sweden	0	0	0	0	0	0	0	0	0	0	0	0	7	7	0.6
United Kingdom	0	0	0	0	0	0	0	0	0	0	0	0	54	54	5.0
Western Europe	0	0	0	0	0	0	0	0	0	0	0	0	197	197	18.2
Austria	0	0	0	0	0	0	0	0	0	0	0	0	1	1	0.1
Belgium	0	0	0	0	0	0	0	0	0	0	0	0	15	15	1.4
France	0	0	0	0	0	0	0	0	0	0	0	0	108	108	10.0
Germany	0	0	0	0	0	0	0	0	0	0	0	0	44	44	4.1
Luxembourg	0	0	0	0	0	0	0	0	0	0	0	0	0	0	0.0
Monaco	0	0	0	0	0	0	0	0	0	0	0	0	0	0	0.0
Netherlands	0	0	0	0	0	0	0	0	0	0	0	0	12	12	1.1
Switzerland	0	0	0	0	0	0	0	0	0	0	0	0	17	17	1.6
Central / Eastern Europe	0	0	0	0	0	0	0	0	0	0	0	0	32	32	2.9
Bulgaria	0	0	0	0	0	0	0	0	0	0	0	0	0	0	0.0
Czech Republic	0	0	0	0	0	0	0	0	0	0	0	0	2	2	0.2
Estonia	0	0	0	0	0	0	0	0	0	0	0	0	0	0	0.0
Hungary	0	0	0	0	0	0	0	0	0	0	0	0	0	0	0.0
Kazakhstan	0	0	0	0	0	0	0	0	0	0	0	0	2	2	0.2
Kyrgyzstan	0	0	0	0	0	0	0	0	0	0	0	0	0	0	0.0
Latvia	0	0	0	0	0	0	0	0	0	0	0	0	0	0	0.0
Lithuania	0	0	0	0	0	0	0	0	0	0	0	0	1	1	0.1
Poland	0	0	0	0	0	0	0	0	0	0	0	0	13	13	1.2
Romania	0	0	0	0	0	0	0	0	0	0	0	0	0	0	0.0
Russian Federation	0	0	0	0	0	0	0	0	0	0	0	0	6	6	0.6
Slovakia	0	0	0	0	0	0	0	0	0	0	0	0	1	1	0.1
Ukraine	0	0	0	0	0	0	0	0	0	0	0	0	7	7	0.6
Uzbekistan	0	0	0	0	0	0	0	0	0	0	0	0	0	0	0.0
Southern Europe	0	0	0	0	0	0	0	0	0	0	0	0	24	24	2.2
Croatia	0	0	0	0	0	0	0	0	0	0	0	0	0	0	0.0
Greece	0	0	0	0	0	0	0	0	0	0	0	0	1	1	0.1
Italy	0	0	0	0	0	0	0	0	0	0	0	0	14	14	1.3
Malta	0	0	0	0	0	0	0	0	0	0	0	0	2	2	0.2
Portugal	0	0	0	0	0	0	0	0	0	0	0	0	2	2	0.2
Serbia	0	0	0	0	0	0	0	0	0	0	0	0	0	0	0.0
Slovenia	0	0	0	0	0	0	0	0	0	0	0	0	1	1	0.1
Spain	0	0	0	0	0	0	0	0	0	0	0	0	4	4	0.4

International Tourist Arrivals to Siem Reap International Airport (REP) by Country of Residence in 2021

(by Air Only)

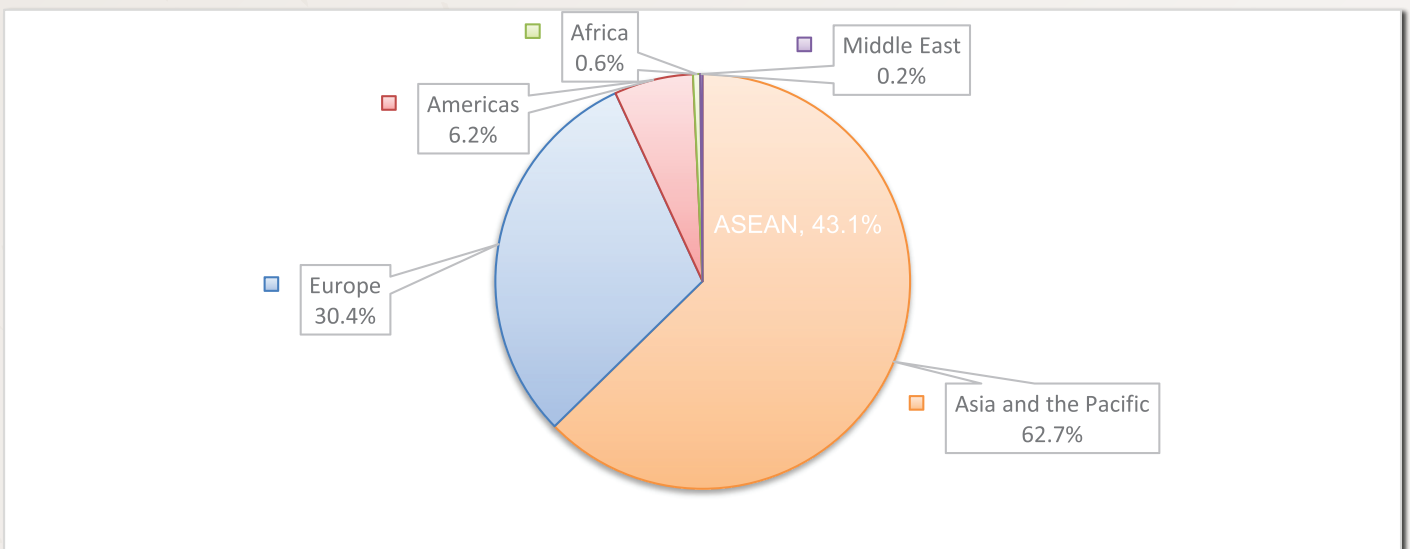
Regions Country of Residence	2021												Total	Share (%) 2021*	
	Jan	Feb	Mar	Apr	May	Jun	Jul	Aug	Sep	Oct	Nov	Dec			
Grand Total	0	0	2	0	2	0	0	0	0	0	0	0	1,081	1,085	100.0
East Mediterranean Europe	0	0	0	0	0	0	0	0	0	0	0	0	3	3	0.3
Israel	0	0	0	0	0	0	0	0	0	0	0	0	2	2	0.2
Turkey	0	0	0	0	0	0	0	0	0	0	0	0	1	1	0.1
Other Europe	0	0	0	0	0	0	0	0	0	0	0	0	1	1	0.1
Americas	0	0	0	0	0	0	0	0	0	0	0	0	67	67	6.2
North America	0	0	0	0	0	0	0	0	0	0	0	0	58	58	5.3
Canada	0	0	0	0	0	0	0	0	0	0	0	0	5	5	0.5
Mexico	0	0	0	0	0	0	0	0	0	0	0	0	2	2	0.2
United States of America	0	0	0	0	0	0	0	0	0	0	0	0	51	51	4.7
Central America	0	0	0	0	0	0	0	0	0	0	0	0	0	0	0.0
Costa Rica	0	0	0	0	0	0	0	0	0	0	0	0	0	0	0.0
Honduras	0	0	0	0	0	0	0	0	0	0	0	0	0	0	0.0
Jamaica	0	0	0	0	0	0	0	0	0	0	0	0	0	0	0.0
South America	0	0	0	0	0	0	0	0	0	0	0	0	9	9	0.8
Argentina	0	0	0	0	0	0	0	0	0	0	0	0	0	0	0.0
Brazil	0	0	0	0	0	0	0	0	0	0	0	0	5	5	0.5
Chile	0	0	0	0	0	0	0	0	0	0	0	0	3	3	0.3
Colombia	0	0	0	0	0	0	0	0	0	0	0	0	1	1	0.1
Ecuador	0	0	0	0	0	0	0	0	0	0	0	0	0	0	0.0
Peru	0	0	0	0	0	0	0	0	0	0	0	0	0	0	0.0
Uruguay	0	0	0	0	0	0	0	0	0	0	0	0	0	0	0.0
Venezuela	0	0	0	0	0	0	0	0	0	0	0	0	0	0	0.0
Other America	0	0	0	0	0	0	0	0	0	0	0	0	0	0	0.0
Africa	0	0	0	0	0	0	0	0	0	0	0	0	6	6	0.6
North Africa	0	0	0	0	0	0	0	0	0	0	0	0	0	0	0.0
Morocco	0	0	0	0	0	0	0	0	0	0	0	0	0	0	0.0
Sudan	0	0	0	0	0	0	0	0	0	0	0	0	0	0	0.0
Tunisia	0	0	0	0	0	0	0	0	0	0	0	0	0	0	0.0
Subsaharan Africa	0	0	0	0	0	0	0	0	0	0	0	0	6	6	0.6
Cameroon	0	0	0	0	0	0	0	0	0	0	0	0	0	0	0.0
Congo	0	0	0	0	0	0	0	0	0	0	0	0	0	0	0.0
Ghana	0	0	0	0	0	0	0	0	0	0	0	0	0	0	0.0
Kenya	0	0	0	0	0	0	0	0	0	0	0	0	0	0	0.0
Liberia	0	0	0	0	0	0	0	0	0	0	0	0	0	0	0.0
Nigeria	0	0	0	0	0	0	0	0	0	0	0	0	0	0	0.0
South Africa	0	0	0	0	0	0	0	0	0	0	0	0	6	6	0.6
Tanzania	0	0	0	0	0	0	0	0	0	0	0	0	0	0	0.0
Uganda	0	0	0	0	0	0	0	0	0	0	0	0	0	0	0.0
Zimbabwe	0	0	0	0	0	0	0	0	0	0	0	0	0	0	0.0
Other Africa	0	0	0	0	0	0	0	0	0	0	0	0	0	0	0.0
Middle East	0	0	0	0	0	0	0	0	0	0	0	0	2	2	0.2
Egypt	0	0	0	0	0	0	0	0	0	0	0	0	1	1	0.1
Iraq	0	0	0	0	0	0	0	0	0	0	0	0	1	1	0.1
Jordan	0	0	0	0	0	0	0	0	0	0	0	0	0	0	0.0
Kuwait	0	0	0	0	0	0	0	0	0	0	0	0	0	0	0.0
Oman	0	0	0	0	0	0	0	0	0	0	0	0	0	0	0.0
Palestine	0	0	0	0	0	0	0	0	0	0	0	0	0	0	0.0
Qatar	0	0	0	0	0	0	0	0	0	0	0	0	0	0	0.0
Saudi Arabia	0	0	0	0	0	0	0	0	0	0	0	0	0	0	0.0
Syria	0	0	0	0	0	0	0	0	0	0	0	0	0	0	0.0
United Arab Emirates	0	0	0	0	0	0	0	0	0	0	0	0	0	0	0.0
Yemen	0	0	0	0	0	0	0	0	0	0	0	0	0	0	0.0
Other Middle East	0	0	0	0	0	0	0	0	0	0	0	0	0	0	0.0



International Tourist arrivals to Siem Reap International Airport by Regions in 2021

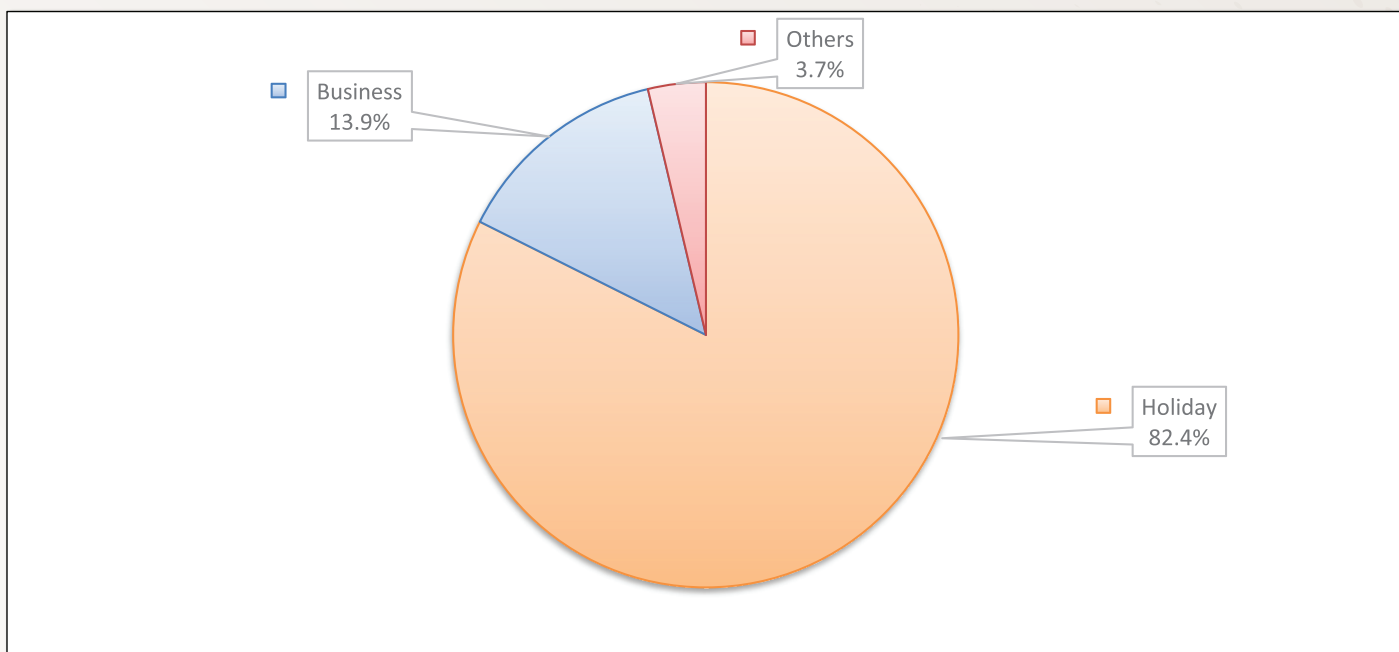
Months	Asia and the Pacific		Europe	Americas	Africa	Middle East	Total
	ASEAN						
Q1	2	2	0	0	0	0	2
January	0	0	0	0	0	0	0
February	0	0	0	0	0	0	0
March	2	2	0	0	0	0	2
Q2	2	2	0	0	0	0	2
April	0	0	0	0	0	0	0
May	2	2	0	0	0	0	2
June	0	0	0	0	0	0	0
Q3	0	0	0	0	0	0	0
July	0	0	0	0	0	0	0
August	0	0	0	0	0	0	0
September	0	0	0	0	0	0	0
Q4	676	464	330	67	6	2	1,081
October	0	0	0	0	0	0	0
November	0	0	0	0	0	0	0
December	676	464	330	67	6	2	1,081
Total	680	468	330	67	6	2	1,085
share (%)	62.7%	43.1%	30.4%	6.2%	0.6%	0.2%	100.0%

Note: 10 countries of ASEAN were included in Asia and the Pacific.



International Tourist Arrivals to Siem Reap International Airport by Purposes of Visit in 2014 - 2021

Purposes of Visit	Int'l tourist arrivals								Change (%)		
	2014	2015	2016	2017	2018	2019	2020	2021	19/18	20/19	2021*/20
Total	1,355,693	1,414,967	1,507,039	1,820,687	1,939,550	1,665,365	240,917	1,085	-14.1	-85.5	-99.5
Holiday	1,332,689	1,375,949	1,477,697	1,781,749	1,896,171	1,571,978	230,914	894	-17.1	-85.3	-99.6
Business	13,840	12,624	15,801	21,404	32,886	81,271	7,719	151	147.1	-90.5	-98.0
Others	9,164	26,394	13,541	17,534	10,493	12,116	2,284	40	15.5	-81.1	-98.2
Q1	453,898	460,908	479,395	552,477	631,444	583,879	240,785	2	-7.5	-58.8	-100.0
Holiday	450,004	454,127	469,446	542,691	621,805	560,278	230,826	0	-9.9	-58.8	-100.0
Business	2,380	2,300	4,303	4,186	6,500	20,901	7,679	2	221.6	-63.3	-100.0
Others	1,514	4,481	5,646	5,600	3,139	2,700	2,280	0	-14.0	-15.6	-100.0
Q2	238,033	258,363	262,276	351,907	375,060	367,474	92	2	-2.0	-100.0	-97.8
Holiday	232,845	245,054	255,855	340,275	365,921	342,624	88	0	-6.4	-100.0	-100.0
Business	3,265	4,683	4,261	6,138	6,520	22,464	0	2	244.5	-100.0	
Others	1,923	8,626	2,160	5,494	2,619	2,386	4	0	-8.9	-99.8	-100.0
Q3	279,983	298,287	315,794	393,967	425,995	325,048	7	0	-23.7	-100.0	-100.0
Holiday	273,682	292,352	310,173	385,131	416,018	299,654	0	0	-28.0	-100.0	
Business	3,689	2,430	3,552	5,859	7,747	22,506	7	0	190.5	-100.0	-100.0
Others	2,612	3,505	2,069	2,977	2,230	2,888	0	0	29.5	-100.0	
Q4	383,779	397,409	449,574	522,336	507,051	388,964	33	1,081	-23.3	-100.0	3175.8
Holiday	376,158	384,416	442,223	513,652	492,427	369,422	0	894	-25.0	-100.0	
Business	4,506	3,211	3,685	5,221	12,119	15,400	33	147	27.1	-99.8	345.5
Others	3,115	9,782	3,666	3,463	2,505	4,142	0	40	65.3	-100.0	



Foreign Visitor Arrivals to Siem Reap Angkor by Months in 2014 - 2021

(by all means of transportation)

Months	2014	2015	2016	2017	2018	2019	2020	2021	Change (%)			
									18/17	19/18	20/19	2021*/20
Q1	778,737	688,994	702,754	764,405	858,580	787,900	383,664	4,482	12.3	-8.2	-51.3	-98.8
January	286,331	245,491	248,563	287,154	294,813	271,050	222,562	1,213	2.7	-8.1	-17.9	-99.5
February	262,226	237,729	246,212	251,900	295,389	273,259	118,933	2,981	17.3	-7.5	-56.5	-97.5
March	230,180	205,774	207,979	225,351	268,378	243,591	42,169	288	19.1	-9.2	-82.7	-99.3
Q2	460,807	416,686	392,928	468,991	498,381	456,543	4,176	847	6.3	-8.4	-99.1	-79.7
April	191,102	174,187	146,942	181,220	192,412	185,405	654	46	6.2	-3.6	-99.6	-93.0
May	143,673	127,815	125,947	147,011	155,196	144,536	1,776	246	5.6	-6.9	-98.8	-86.1
June	126,032	114,684	120,039	140,760	150,773	126,602	1,746	555	7.1	-16.0	-98.6	-68.2
Q3	501,637	441,246	472,550	519,876	544,608	418,070	8,401	838	4.8	-23.2	-98.0	-90.0
July	165,895	154,642	168,730	182,632	185,878	149,269	1,790	447	1.8	-19.7	-98.8	-75.0
August	183,140	166,098	172,636	192,403	201,865	158,124	3,663	163	4.9	-21.7	-97.7	-95.6
September	152,602	120,506	131,184	144,841	156,865	110,677	2,948	228	8.3	-29.4	-97.3	-92.3
Q4	609,756	577,937	637,042	704,010	689,246	543,184	4,648	4,719	-2.1	-21.2	-99.1	1.5
October	147,737	154,208	166,199	187,560	188,474	141,494	2,244	1,119	0.5	-24.9	-98.4	-50.1
November	212,203	200,512	219,917	249,231	233,125	193,260	1,235	2,202	-6.5	-17.1	-99.4	78.3
December	249,816	223,217	250,926	267,219	267,647	208,430	1,169	1,398	0.2	-22.1	-99.4	19.6
Total	2,350,937	2,124,863	2,205,274	2,457,282	2,590,815	2,205,697	400,889	10,886	5.4	-14.9	-81.8	-97.3

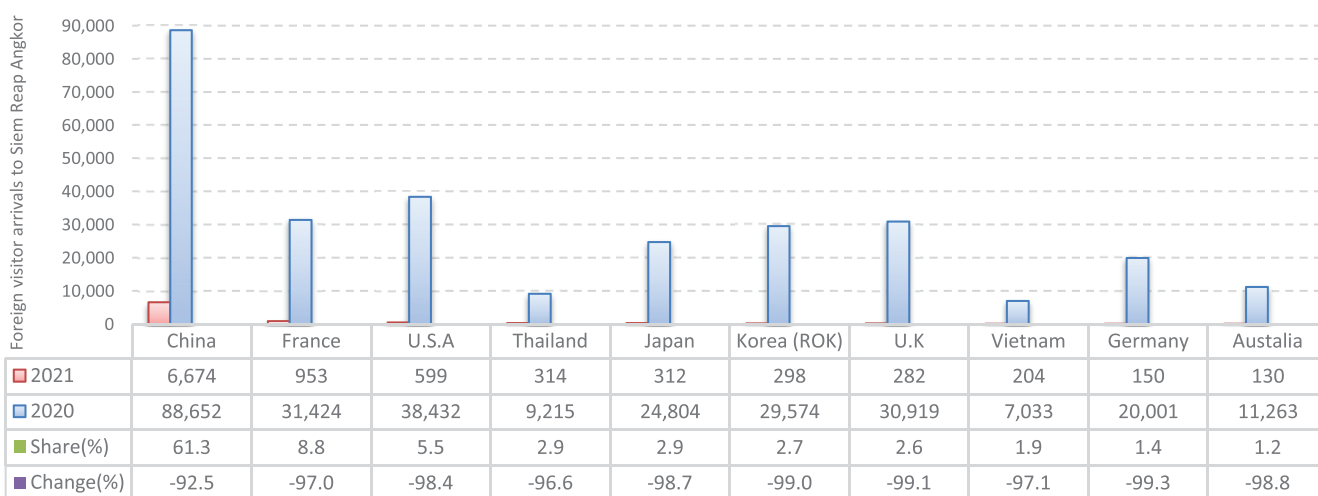
Foreign Visitor Arrivals to Siem Reap Angkor by Mode of Transport in 2016 - 2021

(by all means of transport)

Mode of Transport	2016	2017	2018	2019	2020	2021	Change (%)		
							19/18	20/19	2021*/20
Air	1,701,569	2,000,168	2,185,731	1,815,953	272,728	126	-16.9	-85.0	-100.0
International Flight	1,512,186	1,752,367	1,939,548	1,665,365	240,838	4	-14.1	-85.5	-100.0
Local Flight	189,383	247,801	246,183	150,588	31,890	122	-38.8	-78.8	-99.6
Land	491,747	444,260	395,812	386,711	127,418	10,760	-2.3	-67.1	-91.6
Phnom Penh	171,764	161,173	149,148	150,753	70,854	10,760	1.1	-53.0	-84.8
Poi Pet	314,587	274,093	235,828	229,007	55,876	0	-2.9	-75.6	-100.0
Oddar Meanchey	5,396	8,994	10,836	6,951	688	0	-35.9	-90.1	-100.0
Waterways	11,958	12,854	9,272	3,033	743	0	-67.3	-75.5	-100.0
Phnom Penh	5,179	5,142	2,899	0	0	0	-100.0		
Battambang	6,779	7,712	6,373	3,033	743	0	-52.4	-75.5	-100.0
Total	2,205,274	2,457,282	2,590,815	2,205,697	400,889	10,886	-14.9	-81.8	-97.3

Siem Reap Angkor: Top Ten Arrivals in 2021

(by all means of transport)



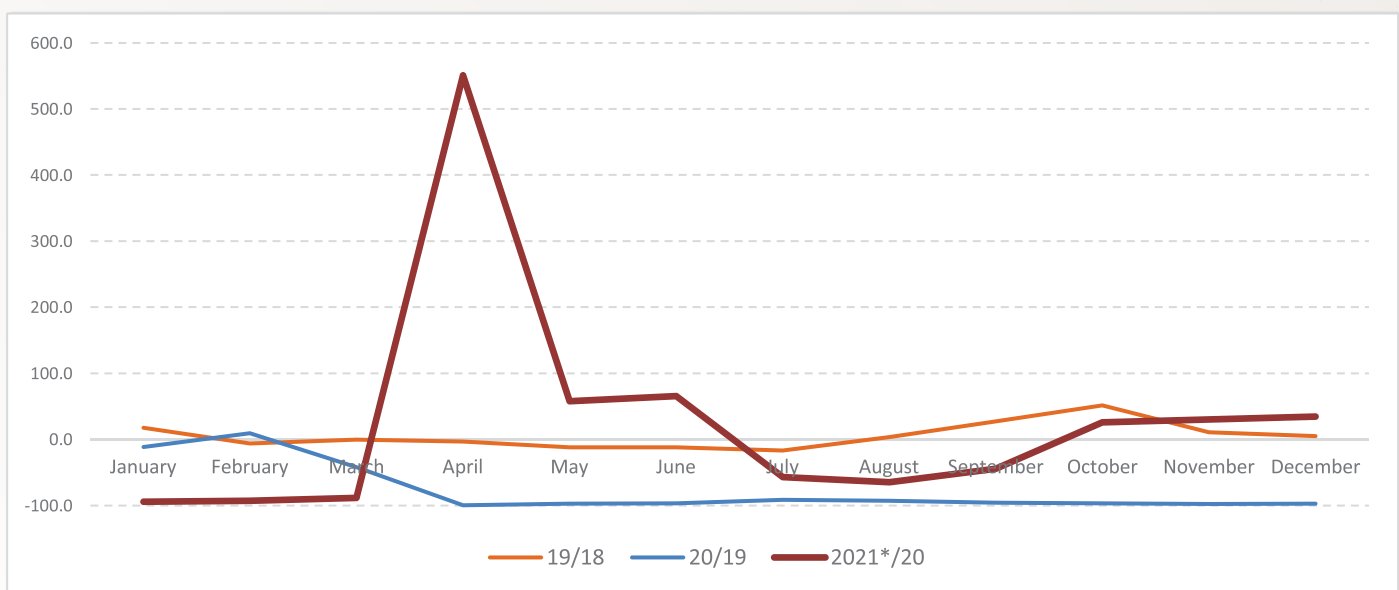
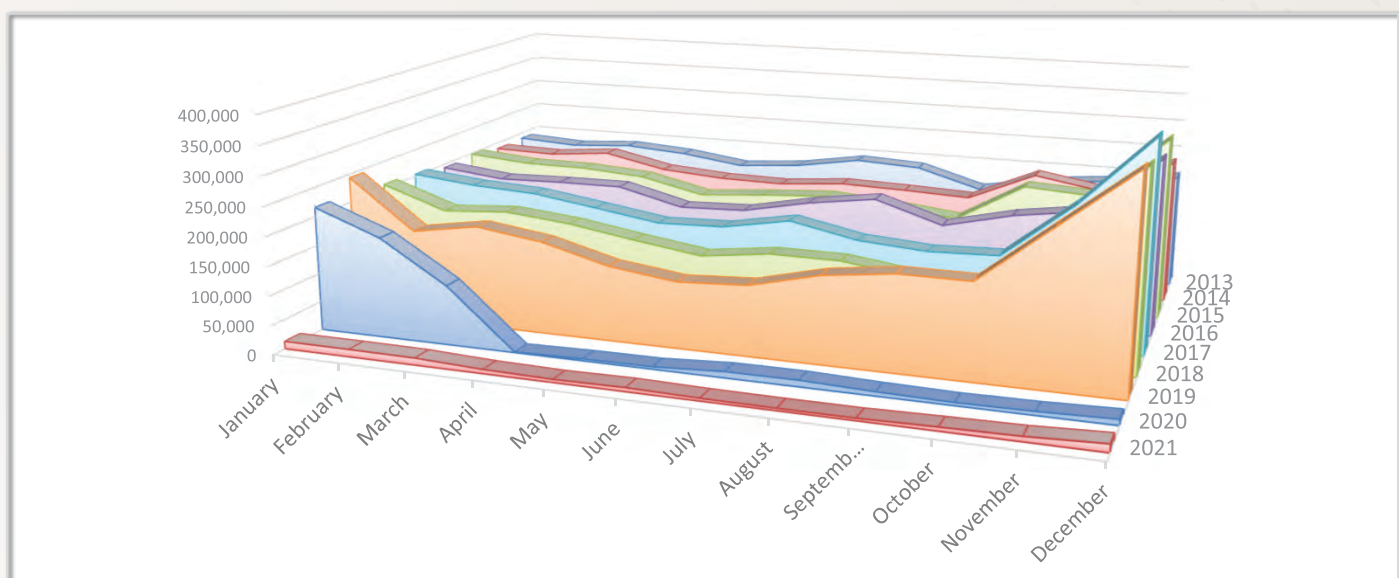
SECTION III

**INTERNATIONAL BORDER
CHECK POINTS**



International Tourist Arrivals to Cambodia by Land and Waterways in 2013 - 2021

Months	2013	2014	2015	2016	2017	2018	2019	2020	2021	Change (%)		
										19/18	20/19	2021*/20
Q1	560,912	568,953	574,368	557,440	581,486	553,621	578,731	491,585	37,366	4.5	-15.1	-92.4
January	188,896	188,115	198,221	193,379	203,603	207,686	243,800	215,829	12,726	17.4	-11.5	-94.1
February	182,307	185,195	188,452	180,697	191,992	168,974	158,210	173,412	12,678	-6.4	9.6	-92.7
March	189,709	195,643	187,695	183,364	185,891	176,961	176,721	102,344	11,962	-0.1	-42.1	-88.3
Q2	522,472	495,231	496,725	498,666	475,529	443,916	405,796	8,389	18,945	-8.6	-97.9	125.8
April	181,652	171,370	179,665	184,121	169,134	165,872	160,720	1,095	7,127	-3.1	-99.3	550.9
May	165,860	162,870	153,745	155,261	151,455	147,410	130,075	3,288	5,192	-11.8	-97.5	57.9
June	174,960	160,991	163,315	159,284	154,940	130,634	115,001	4,006	6,626	-12.0	-96.5	65.4
Q3	536,600	501,218	481,113	545,333	472,337	419,575	435,970	28,529	12,313	3.9	-93.5	-56.8
July	194,112	170,740	170,686	183,026	176,252	145,381	121,326	10,477	4,504	-16.5	-91.4	-57.0
August	188,159	167,554	161,820	199,738	152,307	145,025	150,055	10,910	3,826	3.5	-92.7	-64.9
September	154,329	162,924	148,607	162,569	143,778	129,169	164,589	7,142	3,983	27.4	-95.7	-44.2
Q4	572,523	663,880	747,024	705,906	760,067	687,095	786,100	21,375	28,042	14.4	-97.3	31.2
October	178,350	214,541	217,320	190,674	147,852	108,241	164,256	5,078	6,396	51.8	-96.9	26.0
November	189,328	194,376	209,962	207,847	245,574	236,816	262,156	6,360	8,272	10.7	-97.6	30.1
December	204,845	254,963	319,742	307,385	366,641	342,038	359,688	9,937	13,374	5.2	-97.2	34.6
Total	2,192,507	2,229,282	2,299,230	2,307,345	2,289,419	2,104,207	2,206,597	549,878	96,666	4.9	-75.1	-82.4



Int'l Tourist Arrivals to Cambodia by Land and Waterways by Country of Residence in 2021

(by Land and Waterways)

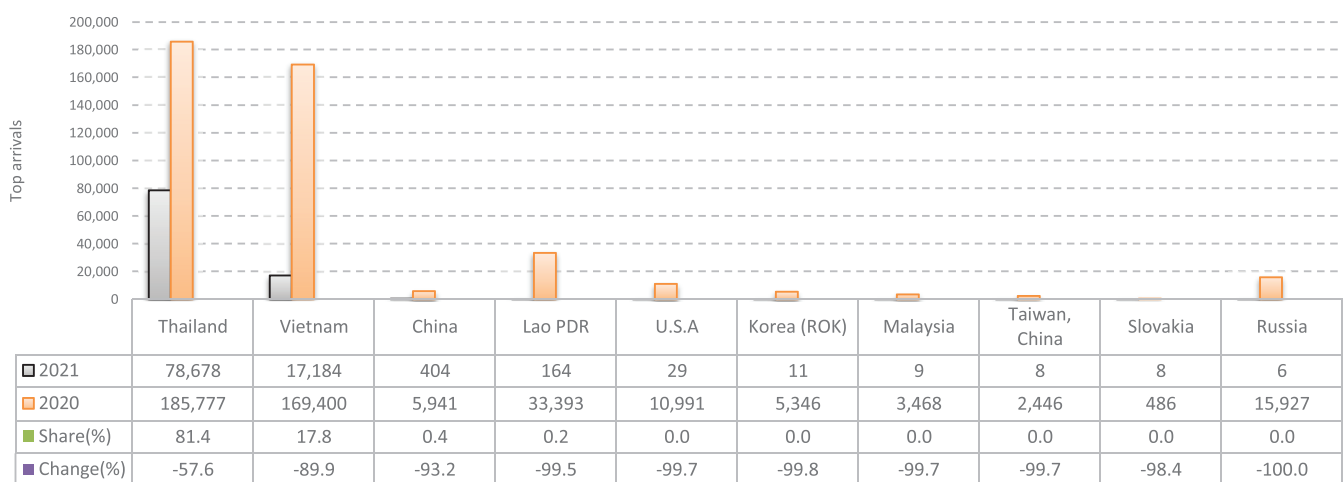
Regions Country of Residence	2021												Total	Share (%) 2021*
	Jan	Feb	Mar	Apr	May	Jun	Jul	Aug	Sep	Oct	Nov	Dec		
Grand Total	12,726	12,678	11,962	7,127	5,192	6,626	4,504	3,826	3,983	6,396	8,272	13,374	96,666	100.0
Asia and the Pacific	12,706	12,677	11,942	7,127	5,190	6,626	4,499	3,826	3,957	6,382	8,253	13,358	96,543	99.9
ASEAN (South-East Asia)	12,648	12,600	11,936	7,127	5,169	6,626	4,499	3,826	3,941	6,364	8,209	13,098	96,043	99.4
Brunei Darussalam	0	0	0	0	0	0	0	0	0	0	0	0	0	0.0
Indonesia	0	0	0	0	0	0	0	0	0	0	0	2	2	0.0
Lao PDR	2	18	11	0	0	2	23	5	6	15	46	36	164	0.2
Malaysia	0	2	0	0	0	0	0	0	0	0	2	5	9	0.0
Myanmar	0	3	0	0	0	0	0	0	0	0	0	0	3	0.0
Philippines	1	0	0	0	0	0	0	1	0	0	0	0	2	0.0
Singapore	0	0	0	0	0	0	0	0	0	0	0	1	1	0.0
Thailand	12,545	11,495	10,611	6,367	4,482	5,760	3,988	3,814	3,913	5,339	3,938	6,426	78,678	81.4
Timor Leste	0	0	0	0	0	0	0	0	0	0	0	0	0	0.0
Vietnam	100	1,082	1,314	760	687	864	488	6	22	1,010	4,223	6,628	17,184	17.8
North-East Asia	57	76	6	0	21	0	0	0	0	3	9	254	426	0.4
China	57	76	5	0	21	0	0	0	0	3	0	242	404	0.4
Hong Kong (China)	0	0	0	0	0	0	0	0	0	0	0	0	0	0.0
Japan	0	0	0	0	0	0	0	0	0	0	2	1	3	0.0
Korea (ROK)	0	0	1	0	0	0	0	0	0	0	4	6	11	0.0
Macau (China)	0	0	0	0	0	0	0	0	0	0	0	0	0	0.0
Mongolia	0	0	0	0	0	0	0	0	0	0	0	0	0	0.0
Taiwan (China)	0	0	0	0	0	0	0	0	0	0	3	5	8	0.0
Southern Asia	-1	0	0	0	0	0	0	0	0	0	2	0	1	0.0
Afghanistan	0	0	0	0	0	0	0	0	0	0	0	0	0	0.0
Bangladesh	0	0	0	0	0	0	0	0	0	0	0	0	0	0.0
Bhutan	0	0	0	0	0	0	0	0	0	0	0	0	0	0.0
India	0	0	0	0	0	0	0	0	0	0	0	0	0	0.0
Iran	0	0	0	0	0	0	0	0	0	0	0	0	0	0.0
Nepal	0	0	0	0	0	0	0	0	0	0	0	0	0	0.0
Pakistan	-1	0	0	0	0	0	0	0	0	0	2	0	1	0.0
Srilanka	0	0	0	0	0	0	0	0	0	0	0	0	0	0.0
Oceania	0	1	0	0	0	0	0	0	0	0	0	2	3	0.0
Australia	0	0	0	0	0	0	0	0	0	0	0	2	2	0.0
Fiji	0	0	0	0	0	0	0	0	0	0	0	0	0	0.0
New Zealand	0	1	0	0	0	0	0	0	0	0	0	0	1	0.0
Other Asia & the Pacific	2	0	0	0	0	0	0	0	16	15	33	4	70	0.1
Europe	16	1	0	0	0	0	5	0	16	4	4	5	51	0.1
Northern Europe	2	0	0	0	0	0	0	0	0	0	1	0	3	0.0
Denmark	0	0	0	0	0	0	0	0	0	0	0	0	0	0.0
Finland	1	0	0	0	0	0	0	0	0	0	0	0	1	0.0
Iceland	0	0	0	0	0	0	0	0	0	0	0	0	0	0.0
Ireland	0	0	0	0	0	0	0	0	0	0	0	0	0	0.0
Norway	0	0	0	0	0	0	0	0	0	0	0	0	0	0.0
Sweden	0	0	0	0	0	0	0	0	0	0	0	0	0	0.0
United Kingdom	1	0	0	0	0	0	0	0	0	0	1	0	2	0.0
Western Europe	3	1	0	0	0	0	0	0	0	0	0	3	7	0.0
Austria	0	0	0	0	0	0	0	0	0	0	0	0	0	0.0
Belgium	1	0	0	0	0	0	0	0	0	0	0	2	3	0.0
France	2	1	0	0	0	0	0	0	0	0	0	0	3	0.0
Germany	0	0	0	0	0	0	0	0	0	0	0	1	1	0.0
Luxembourg	0	0	0	0	0	0	0	0	0	0	0	0	0	0.0
Monaco	0	0	0	0	0	0	0	0	0	0	0	0	0	0.0
Netherlands	0	0	0	0	0	0	0	0	0	0	0	0	0	0.0
Switzerland	0	0	0	0	0	0	0	0	0	0	0	0	0	0.0
Central / Eastern Europe	8	0	0	0	0	0	5	0	6	0	0	1	20	0.0
Bulgaria	0	0	0	0	0	0	0	0	0	0	0	0	0	0.0
Czech Republic	0	0	0	0	0	0	0	0	0	0	0	0	0	0.0
Estonia	0	0	0	0	0	0	0	0	0	0	0	0	0	0.0
Hungary	0	0	0	0	0	0	0	0	0	0	0	0	0	0.0
Kazakhstan	0	0	0	0	0	0	0	0	0	0	0	0	0	0.0
Kyrgyzstan	0	0	0	0	0	0	0	0	0	0	0	0	0	0.0
Latvia	0	0	0	0	0	0	0	0	0	0	0	0	0	0.0
Lithuania	0	0	0	0	0	0	0	0	0	0	0	0	0	0.0
Poland	0	0	0	0	0	0	0	0	0	0	0	0	0	0.0
Romania	0	0	0	0	0	0	0	0	6	0	0	0	6	0.0
Russian Federation	0	0	0	0	0	0	5	0	0	0	0	1	6	0.0
Slovakia	8	0	0	0	0	0	0	0	0	0	0	0	8	0.0
Ukraine	0	0	0	0	0	0	0	0	0	0	0	0	0	0.0
Uzbekistan	0	0	0	0	0	0	0	0	0	0	0	0	0	0.0
Southern Europe	2	0	0	0	0	0	0	0	0	0	0	0	2	0.0
Croatia	0	0	0	0	0	0	0	0	0	0	0	0	0	0.0
Greece	0	0	0	0	0	0	0	0	0	0	0	0	0	0.0
Italy	0	0	0	0	0	0	0	0	0	0	0	0	0	0.0
Malta	0	0	0	0	0	0	0	0	0	0	0	0	0	0.0
Portugal	0	0	0	0	0	0	0	0	0	0	0	0	0	0.0
Serbia	0	0	0	0	0	0	0	0	0	0	0	0	0	0.0
Slovenia	2	0	0	0	0	0	0	0	0	0	0	0	2	0.0
Spain	0	0	0	0	0	0	0	0	0	0	0	0	0	0.0

Int'l Tourist Arrivals to Cambodia by Land and Waterways by Country of Residence in 2021

(by Land and Waterways)

Regions Country of Residence	2021												Total	Share (%) 2021*
	Jan	Feb	Mar	Apr	May	Jun	Jul	Aug	Sep	Oct	Nov	Dec		
Grand Total	12,726	12,678	11,962	7,127	5,192	6,626	4,504	3,826	3,983	6,396	8,272	13,374	96,666	100.0
East Mediterranean Europe	0	0	0	0	0	0	0	0	0	0	0	1	1	0.0
Israel	0	0	0	0	0	0	0	0	0	0	0	1	1	0.0
Turkey	0	0	0	0	0	0	0	0	0	0	0	0	0	0.0
Other Europe	1	0	0	0	0	0	0	0	10	4	3	0	18	0.0
Americas	1	0	20	0	0	0	0	0	0	3	1	11	36	0.0
North America	0	0	20	0	0	0	0	0	0	0	1	11	32	0.0
Canada	0	0	0	0	0	0	0	0	0	0	0	3	3	0.0
Mexico	0	0	0	0	0	0	0	0	0	0	0	0	0	0.0
United States of America	0	0	20	0	0	0	0	0	0	0	1	8	29	0.0
Central America	0	0	0	0	0	0	0	0	0	0	0	0	0	0.0
Costa Rica	0	0	0	0	0	0	0	0	0	0	0	0	0	0.0
Honduras	0	0	0	0	0	0	0	0	0	0	0	0	0	0.0
Jamaica	0	0	0	0	0	0	0	0	0	0	0	0	0	0.0
South America	0	0	0	0	0	0	0	0	0	0	0	0	0	0.0
Argentina	0	0	0	0	0	0	0	0	0	0	0	0	0	0.0
Brazil	0	0	0	0	0	0	0	0	0	0	0	0	0	0.0
Chile	0	0	0	0	0	0	0	0	0	0	0	0	0	0.0
Colombia	0	0	0	0	0	0	0	0	0	0	0	0	0	0.0
Ecuador	0	0	0	0	0	0	0	0	0	0	0	0	0	0.0
Peru	0	0	0	0	0	0	0	0	0	0	0	0	0	0.0
Uruguay	0	0	0	0	0	0	0	0	0	0	0	0	0	0.0
Venezuela	0	0	0	0	0	0	0	0	0	0	0	0	0	0.0
Other America	1	0	0	0	0	0	0	0	0	3	0	0	4	0.0
Africa	0	0	0	0	0	0	0	0	9	5	14	0	28	0.0
North Africa	0	0	0	0	0	0	0	0	0	0	0	0	0	0.0
Morocco	0	0	0	0	0	0	0	0	0	0	0	0	0	0.0
Sudan	0	0	0	0	0	0	0	0	0	0	0	0	0	0.0
Tunisia	0	0	0	0	0	0	0	0	0	0	0	0	0	0.0
Subsaharan Africa	0	0	0	0	0	0	0	0	0	0	1	0	1	0.0
Cameroon	0	0	0	0	0	0	0	0	0	0	0	0	0	0.0
Congo	0	0	0	0	0	0	0	0	0	0	0	0	0	0.0
Ghana	0	0	0	0	0	0	0	0	0	0	0	0	0	0.0
Kenya	0	0	0	0	0	0	0	0	0	0	0	0	0	0.0
Liberia	0	0	0	0	0	0	0	0	0	0	0	0	0	0.0
Nigeria	0	0	0	0	0	0	0	0	0	0	0	0	0	0.0
South Africa	0	0	0	0	0	0	0	0	0	0	0	0	0	0.0
Tanzania	0	0	0	0	0	0	0	0	0	0	0	0	0	0.0
Uganda	0	0	0	0	0	0	0	0	0	0	1	0	1	0.0
Zimbabwe	0	0	0	0	0	0	0	0	0	0	0	0	0	0.0
Other Africa	0	0	0	0	0	0	0	0	9	5	13	0	27	0.0
Middle East	3	0	0	0	2	0	0	0	1	2	0	0	8	0.0
Egypt	0	0	0	0	0	0	0	0	0	0	0	0	0	0.0
Iraq	0	0	0	0	1	0	0	0	0	0	0	0	1	0.0
Jordan	3	0	0	0	0	0	0	0	0	0	0	0	3	0.0
Kuwait	0	0	0	0	0	0	0	0	0	0	0	0	0	0.0
Oman	0	0	0	0	0	0	0	0	0	0	0	0	0	0.0
Palestine	0	0	0	0	0	0	0	0	0	0	0	0	0	0.0
Qatar	0	0	0	0	0	0	0	0	0	0	0	0	0	0.0
Saudi Arabia	0	0	0	0	0	0	0	0	0	0	0	0	0	0.0
Syria	0	0	0	0	1	0	0	0	0	0	0	0	1	0.0
United Arab Emirates	0	0	0	0	0	0	0	0	0	0	0	0	0	0.0
Yemen	0	0	0	0	0	0	0	0	0	0	0	0	0	0.0
Other Middle East	0	0	0	0	0	0	0	0	1	2	0	0	3	0.0

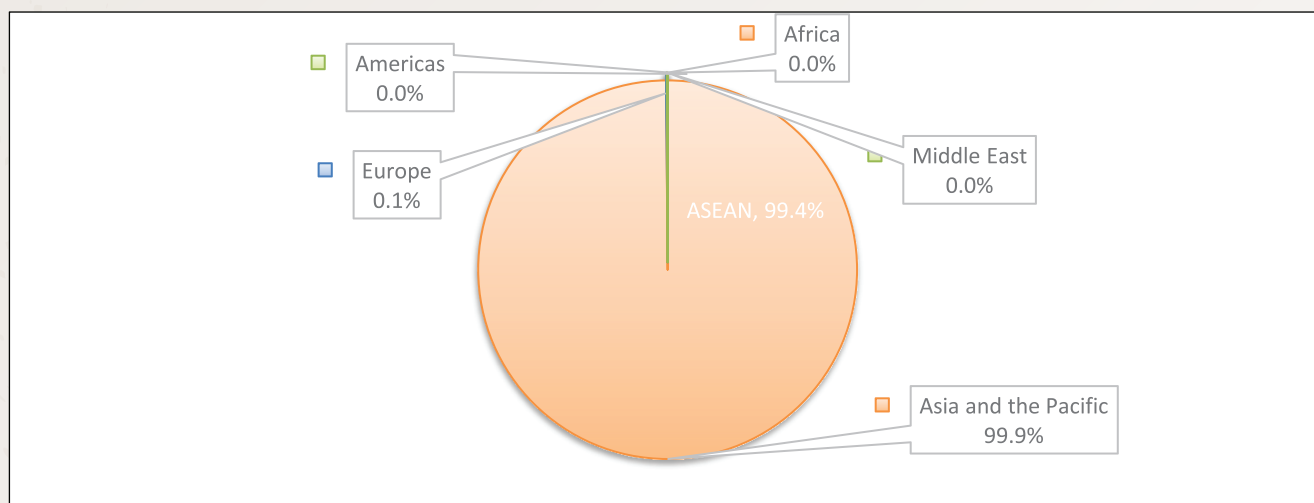
Land and Waterways: Top Ten Generating Markets in 2021



International Tourist Arrivals to Cambodia by Land and Waterways by Regions in 2021

Months	Asia and the Pacific		Europe	Americas	Africa	Middle East	Total
		ASEAN					
Q1	37,325	37,184	17	21	0	3	37,366
January	12,706	12,648	16	1	0	3	12,726
February	12,677	12,600	1	0	0	0	12,678
March	11,942	11,936	0	20	0	0	11,962
Q2	18,943	18,922	0	0	0	2	18,945
April	7,127	7,127	0	0	0	0	7,127
May	5,190	5,169	0	0	0	2	5,192
June	6,626	6,626	0	0	0	0	6,626
Q3	12,282	12,266	21	0	9	1	12,313
July	4,499	4,499	5	0	0	0	4,504
August	3,826	3,826	0	0	0	0	3,826
September	3,957	3,941	16	0	9	1	3,983
Q4	27,993	27,671	13	15	19	2	28,042
October	6,382	6,364	4	3	5	2	6,396
November	8,253	8,209	4	1	14	0	8,272
December	13,358	13,098	5	11	0	0	13,374
Total	96,543	96,043	51	36	28	8	96,666
share (%)	99.9%	99.4%	0.1%	0.0%	0.0%	0.0%	100.0%

Note: 10 countries of ASEAN were included in Asia and the Pacific.



International Tourist Arrivals to Cambodia by Land and Waterways by Purposes of Visit in 2014 - 2021

Purposes of Visit	Int'l tourist arrivals								Change (%)		
	2014	2015	2016	2017	2018	2019	2020	2021	19/18	20/19	2021*/20
Total	2,229,282	2,299,230	2,307,345	2,289,419	2,104,207	2,206,597	549,878	96,666	4.9	-75.1	-82.4
Holiday	2,168,574	2,067,243	2,050,563	2,051,311	1,922,541	2,021,898	500,970	84,998	5.2	-75.2	-83.0
Business	38,452	105,813	118,854	111,911	109,663	129,693	24,140	10,379	18.3	-81.4	-57.0
Others	22,256	126,174	137,928	126,197	72,003	55,006	24,768	1,289	-23.6	-55.0	-94.8
Q1	568,953	574,368	557,440	581,486	553,621	578,731	491,585	37,366	4.5	-15.1	-92.4
Holiday	561,670	511,230	491,564	517,561	504,006	520,774	444,905	33,441	3.3	-14.6	-92.5
Business	5,313	22,419	30,450	27,995	25,729	35,176	22,385	2,673	36.7	-36.4	-88.1
Others	1,970	40,719	35,426	35,930	23,886	22,781	24,295	1,252	-4.6	6.6	-94.8
Q2	495,231	496,725	498,666	475,529	443,916	405,796	8,389	18,945	-8.6	-97.9	125.8
Holiday	482,622	455,609	435,335	415,684	401,470	367,837	8,312	16,626	-8.4	-97.7	100.0
Business	10,588	26,892	31,088	27,858	27,792	32,759	71	2,319	17.9	-99.8	3166.2
Others	2,021	14,224	32,243	31,987	14,654	5,200	6	0	-64.5	-99.9	-100.0
Q3	501,218	481,113	545,333	472,337	419,575	435,970	28,529	12,313	3.9	-93.5	-56.8
Holiday	486,973	433,764	487,160	418,160	377,723	394,117	27,599	10,496	4.3	-93.0	-62.0
Business	12,023	26,282	27,607	26,853	27,322	37,386	920	1,795	36.8	-97.5	95.1
Others	2,222	21,067	30,566	27,324	14,530	4,467	10	22	-69.3	-99.8	120.0
Q4	663,880	747,024	705,906	760,067	687,095	786,100	21,375	28,042	14.4	-97.3	31.2
Holiday	637,309	666,640	636,504	699,906	639,342	739,170	20,154	24,435	15.6	-97.3	21.2
Business	10,528	30,220	29,709	29,205	28,820	24,372	764	3,592	-15.4	-96.9	370.2
Others	16,043	50,164	39,693	30,956	18,933	22,558	457	15	19.1	-98.0	-96.7

UNIT II

DOMESTIC TOURISM



Tiks Kroeung Battambang

Cambodia: Internal tourism report in 2017 - 2021

No.	Destinations	2017		2018		2019		2020		2021		Share (%)		Change (%)	
		KHM	FOR	KHM	FOR	KHM	FOR	KHM	FOR	KHM	FOR	2021*		2021*/20	
												KHM	FOR	KHM	FOR
I	1 Phnom Penh	2,656,869	3,144,875	2,354,240	3,610,262	2,381,301	4,404,895	1,835,414	905,254	1,220,975	144,175	26.2	51.6	-33.5	-84.1
II	Cultural Zone	3,313,958	2,554,258	3,510,425	2,688,680	2,330,248	2,294,818	990,455	432,114	500,608	11,636	10.7	4.2	-49.5	-97.3
	2 Kampong Thom	87,114	32,136	76,418	36,223	96,491	30,755	123,952	11,673	66,341	685	1.4	0.2	-46.5	-94.1
	3 Oddar Meanchey	37,125	3,508	42,264	5,027	52,115	3,760	42,569	5,434	14,494	4	0.3	0.0	-66.0	-99.9
	4 Preah Vihear	103,567	61,332	141,996	56,615	125,033	54,606	120,787	14,118	47,102	61	1.0	0.0	-61.0	-99.6
	5 Siem Reap	3,086,152	2,457,282	3,249,747	2,590,815	2,056,609	2,205,697	703,147	400,889	372,671	10,886	8.0	3.9	-47.0	-97.3
III	Coastal Zone	3,139,447	739,884	3,279,025	877,236	3,175,780	1,204,374	2,873,483	356,863	2,050,865	105,892	44.0	37.9	-28.6	-70.3
	6 Preah Sihanouk	1,525,286	469,918	1,466,590	581,180	1,343,690	885,792	793,607	225,316	1,114,383	89,377	23.9	32.0	40.4	-60.3
	7 Kampot	94,223	162,171	165,815	167,735	393,970	176,463	426,904	66,651	225,861	9,875	4.8	3.5	-47.1	-85.2
	8 Kep	1,266,197	50,619	1,347,524	51,685	1,183,009	64,613	1,365,631	30,503	536,030	5,829	11.5	2.1	-60.7	-80.9
	9 Koh Kong	253,741	57,176	299,096	76,636	255,111	77,506	287,341	34,393	174,591	811	3.7	0.3	-39.2	-97.6
IV	Eco-tourism Zone	497,651	71,697	559,484	75,096	656,029	81,588	582,423	24,887	438,737	4,315	9.4	1.5	-24.7	-82.7
	10 Kratie	70,194	24,947	71,636	25,990	74,405	26,878	49,700	8,433	24,918	903	0.5	0.3	-49.9	-89.3
	11 Mondul Kiri	102,590	11,759	117,719	13,276	164,607	14,530	228,211	4,738	233,815	1,856	5.0	0.7	2.5	-60.8
	12 Rattanak Kiri	179,274	22,844	197,292	24,917	208,133	25,191	187,376	5,953	121,059	550	2.6	0.2	-35.4	-90.8
	13 Stung Treng	145,593	12,147	172,837	10,913	208,884	14,989	117,136	5,763	58,945	1,006	1.3	0.4	-49.7	-82.5
V	Battambang Zone	688,051	109,925	740,059	117,920	1,234,166	118,727	580,477	37,448	250,510	4,558	5.4	1.6	-56.8	-87.8
	14 Banteay Meanchey	117,813	3,187	121,021	4,833	231,299	5,324	69,533	760	17,918	45	0.4	0.0	-74.2	-94.1
	15 Battambang	519,835	98,304	567,588	100,744	580,314	101,473	470,872	33,887	158,563	2,988	3.4	1.1	-66.3	-91.2
	16 Pailin	10,684	1,415	11,203	1,224	58,326	3,919	22,210	425	9,437	100	0.2	0.0	-57.5	-76.5
	17 Pursat	39,719	7,019	40,247	11,119	364,227	8,011	17,862	2,376	64,592	1,425	1.4	0.5	261.6	-40.0
VI	Others	568,392	116,849	616,400	128,102	1,541,999	235,330	365,717	57,060	201,387	8,702	4.3	3.1	-44.9	-84.7
	18 Kampong Cham	278,400	14,819	337,741	15,629	317,153	22,974	212,093	8,201	153,036	598	3.3	0.2	-27.8	-92.7
	19 Kampong Chhnang	64,048	4,477	32,300	5,092	929,838	114,878	7,844	1,602	1,782	31	0.0	0.0	-77.3	-98.1
	20 Kampong Speu	31,443	14,336	26,979	14,923	34,836	15,790	28,456	12,428	5,326	2,602	0.1	0.9	-81.3	-79.1
	21 Kandal	28,401	10,619	29,480	16,136	30,786	12,311	20,744	6,227	5,887	1,535	0.1	0.5	-71.6	-75.3
	22 Prey Veng	20,532	2,567	14,685	8,941	16,399	3,682	4,652	1,799	1,831	37	0.0	0.0	-60.6	-97.9
	23 Svay Rieng	50,845	1,583	62,469	5,107	60,173	6,614	20,844	610	2,852	70	0.1	0.0	-86.3	-88.5
	24 Takeo	36,338	13,466	48,708	14,852	48,004	13,321	33,635	4,656	17,179	1,007	0.4	0.4	-48.9	-78.4
	25 Thbong Khmum	58,385	54,982	64,038	47,422	104,810	45,760	37,449	21,537	13,494	2,822	0.3	1.0	-64.0	-86.9
	TOTAL	10,864,368	6,737,488	11,059,633	7,497,296	11,319,523	8,339,732	7,227,969	1,813,626	4,663,082	279,278	100.0	100.0	-35.5	-84.6

Note:

KHM: Cambodia Visitors
FOR: Foreign Visitors





Apsara

UNIT III

TOURISM SUPPLY



Busra Waterfall Mondulkiri Province

Tourism Supply Side:

Number of Hotels, Guesthouses, Restaurant and Massage & SPA in 1997 - 2021

Years	Hotels				Guesthouses				Restaurant		Massage & SPA	
	Number	Change (%)	Rooms	Change (%)	Number	Change (%)	Rooms	Change (%)	Number	Chairs	Number	Beds
1997	179		6,989		60		477					
1998	216	20.7	8,247	18.0	147	145.0	1,510	216.6	356	34,589	35	812
1999	221	2.3	9,115	10.5	186	26.5	1,897	25.6	402	35,601	39	854
2000	240	8.6	9,673	6.1	292	57.0	3,233	70.4	458	41,589	42	964
2001	247	2.9	10,804	11.7	370	26.7	3,899	20.6	505	43,786	44	975
2002	267	8.1	11,426	5.8	509	37.6	6,109	56.7	624	45,310	47	984
2003	292	9.4	13,201	15.5	549	7.9	6,497	6.4	695	45,810	52	1,098
2004	299	2.4	14,271	8.1	615	12.0	7,684	18.3	713	51,254	56	1,150
2005	317	6.0	15,465	8.4	684	11.2	9,000	17.1	719	54,210	56	1,150
2006	351	10.7	17,914	15.8	742	8.5	9,166	1.8	747	65,210	53	1,045
2007	395	12.5	20,470	14.3	891	20.1	11,563	26.2	920	77,560	190	1,540
2008	398	0.8	20,678	1.0	925	3.8	12,180	5.3	934	78,563	111	1,030
2009	451	13.3	23,010	11.3	1,018	10.1	14,512	19.1	986	98,520	126	1,854
2010	440	-2.4	24,393	6.0	1,087	6.8	15,321	5.6	1,010	100,758	158	1,985
2011	476	8.2	26,484	8.6	1,142	5.1	16,752	9.3	1,142	103,692	191	2,015
2012	490	2.9	27,117	2.4	1,296	13.5	19,329	15.4	1,156	104,250	195	2,104
2013	545	11.2	29,937	10.4	1,462	12.8	21,286	10.1	1,336	111,320	247	2,213
2014	554	1.7	29,729	-0.7	1,563	6.9	22,256	4.6	1,220	108,158	240	2,156
2015	668	20.6	34,619	16.4	2,229	42.6	28,660	28.8	2,620	125,652	378	2,458
2016	760	13.8	40,160	16.0	2,170	-2.6	32,463	13.3	1,982	117,193	307	2,237
2017	731	-3.8	39,328	-2.1	2,405	10.8	35,228	8.5	2,437	130,885	411	2,779
2018	846	15.7	46,696	18.7	2,313	-3.8	33,819	-4.0	2,199	131,873	286	2,851
2019	1,050	24.1	49,185	5.3	2,705	16.9	35,343	4.5	3,415	167,289	566	4,834
2020	1,028	-2.1	44,428	-9.7	2,755	1.8	35,791	1.3	3,359	185,258	651	5,556
2021	856	-16.7	46,363	4.4	2,428	-11.9	32,876	-8.1	2,589	150,607	466	3,447

Tourism Supply: Tourism Service Statistics in 2021

No.	Destinations	Hotels		Guesthouses		Restaurants		Massage & SPA		Karaoke	Resorts
		No.	Rooms	No.	Rooms	Number	Chairs	Number	Beds		
I	Phnom Penh	220	15,734	518	8,096	549	49,586	116	1,436	282	9
II	Cultural Zone	245	15,527	384	6,574	341	24,597	78	767	98	39
	2 Kampong Thom	8	309	46	807	42	2,853	9	40	34	13
	3 Oddar Meanchey	1	20	38	514	31	1,482	6	22	24	17
	4 Preah Vihear	6	212	39	493	60	2,782	9	30	24	4
	5 Siem Reap	230	14,986	261	4,760	208	17,480	54	675	16	5
III	Coastal Zone	165	6,031	570	5,806	486	16,841	67	271	97	33
	6 Preah Sihanouk	118	4,107	185	1,475	201	6,019	17	-	28	4
	7 Kamptot	24	1,170	302	3,246	213	8,148	35	199	34	15
	8 Kep	11	302	34	340	30	1,042	3	18	6	13
	9 Koh Kong	12	452	49	745	42	1,632	12	54	29	1
IV	Eco-tourism Zone	65	1,934	152	1,879	134	5,414	19	76	55	52
	10 Kratie	16	621	48	450	58	2,189	10	43	21	12
	11 Mondul Kiri	35	699	52	659	37	1,801	4	13	13	9
	12 Rattanak Kiri	10	405	36	476	13	375	0	0	10	17
	13 Stung Treng	4	209	16	294	26	1,049	5	20	11	14
V	Battambang Zone	88	3,755	235	4,036	365	22,657	77	298	84	61
	14 Banteay Meanchey	26	1,023	87	1,410	113	6,095	41	129	27	12
	15 Battambang	46	1,867	78	1,388	117	10,582	4	40	29	31
	16 Pailin	10	502	26	707	98	4,326	16	68	7	5
	17 Pursat	6	363	44	531	37	1,654	16	61	21	13
VI	Others	73	3,382	569	6,485	714	31,512	109	599	348	60
	18 Kampong Cham	17	832	108	1,289	144	7,833	26	154	62	11
	19 Kampong Chhnang	10	330	69	622	100	3,754	6	21	20	16
	20 Kampong Speu	6	206	27	125	129	4,300	2	15	19	8
	21 Kandal	1	20	77	1,051	133	6,119	8	100	63	6
	22 Prey Veng	5	109	84	795	40	1,461	15	48	66	4
	23 Svay Rieng	26	1,622	73	1,132	78	4,244	33	166	31	3
	24 Takeo	2	60	75	797	55	2,341	4	19	64	7
	25 Tboung Khmum	6	203	56	674	35	1,460	15	76	23	5
	TOTAL	856	46,363	2,428	32,876	2,589	150,607	466	3,447	964	254

Tourism Supply Side:**Number of Tour Operators and Travel Agent from 1996 - 2021**

Years	Offices			Change (%)
	Head	Branch	Total	
1996	81	35	116	
1997	78	37	115	-0.9
1998	103	34	137	19.1
1999	117	43	160	16.8
2000	140	64	204	27.5
2001	166	70	236	15.7
2002	186	73	259	9.7
2003	186	84	270	4.2
2004	208	94	302	11.9
2005	237	99	336	11.3
2006	277	105	382	13.7
2007	333	118	451	18.1
2008	354	119	473	4.9
2009	372	113	485	2.5
2010	392	115	507	4.5
2011	404	185	589	16.2
2012	457	108	565	-4.1
2013	513	100	613	8.5
2014	505	108	613	0.0
2015	517	115	632	3.1
2016	573	92	665	5.2
2017	595	87	682	2.6
2018	538	99	637	-6.6
2019	666	86	752	18.1
2020	607	79	686	-8.8
2021	602	36	638	-7.0

Number of Tourist Guides in 2021

No.	Languages	2021			
		Phnom Penh	Siem Reap	Coastal Zone	National Guides
1	English	385	1705	33	73
2	Japanese	87	835	-	26
3	French	147	324	-	45
4	Chinese	266	1250	5	25
5	Korean	12	261	-	2
6	Thai	15	434	1	5
7	German	54	112	-	9
8	Spanish	29	153	-	4
9	Italian	13	29	-	4
10	Russian	27	81	-	4
11	Vietnamese	84	123	12	10
16	Malay	10	5	-	3
	Total	1,129	5,312	51	210

**សូចនាករគន្លឹះទេសចរណ៍ និងស្ថិតិទេសចរណ៍ឆ្លុះបញ្ចាំងការដែលបានចាត់តាំង
ដែលវិស័យទេសចរណ៍សម្រេចបាន
ឆ្នាំ២០២១**

1. ទេសចរអន្តរជាតិ 20 ម៉ឺននាក់ (196.495 នាក់) ថយចុះ 85,0%
(International Tourists)
 2. ទេសចរជាតិ 4,66 លាននាក់ (4.663.082 នាក់) ថយចុះ 35,5%
(Domestic Tourists)
- បញ្ជាក់៖** ទេសចរផ្ទៃក្នុង (Internal tourists) បានធ្វើដំណើរកម្សាន្តទូទាំងប្រទេស រួមមាន៖ (១) ទេសចរជាតិ
(Domestic tourists - KHM) ប្រមាណ ៤,៦៦ លាននាក់ (៤.៦៦៣.០៨២ នាក់) ថយចុះ ៣៥,៥% និង
(២) ទេសចរបរទេស (Foreign visitors - FOR) ប្រមាណ ០,២៨ លាននាក់ (២៧៩.២៧៨ នាក់) ថយចុះ ៨៤,៦%។
3. ទេសចរជាតិចេញក្រៅ 3 ម៉ឺននាក់ (30.517 នាក់) ថយចុះ 90,6%
(Cambodia Outbound Tourists)
 4. មូលដ្ឋានអាជីវកម្មទេសចរណ៍ 14.435 អាជ្ញាប័ណ្ណ
(Tourism Establishments)
 5. សេវាកម្មស្នាក់នៅ 86.499 បន្ទប់
(Accommodations)
 6. ចំណូលទេសចរណ៍អន្តរជាតិ 184 លានដុល្លារអាមេរិក ថយចុះ 82,0%
(International Tourism Receipts)
 7. មុខរបរ និងការងារទេសចរណ៍ 22,5 ម៉ឺននាក់
(Tourism Direct Jobs)
 8. ចំណាយទេសចរជាតិសរុបប្រមាណ 230 លានដុល្លារអាមេរិក
(Domestic tourists expenditure)
 9. រយៈពេលស្នាក់នៅមធ្យម 3 ថ្ងៃ, 2 យប់ និងចំណាយមធ្យមទេសចរជាតិម្នាក់ 50 ដុល្លារអាមេរិក
(Average length of stay and average expenditure)
 10. វិស័យទេសចរណ៍បានរួមចំណែកក្នុងផលិតផលក្នុងស្រុកសរុប (GDP) ប្រមាណ 1,8%
(Tourism sector contributed to gross domestic products)



Published by: Department of Tourism Statistics, National Institute Tourism, Ministry of Tourism.

Sources:

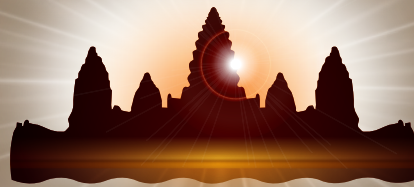
- General Department of Immigration (GDI), Ministry of Interior.
- 25 Provincial and Municipal Tourism Departments.

Compiled by:

Mr. KONG Sopheareak, Researcher and analyst
Mr. CHAK Vorleak, Survey monitor and photographer
Mr. HORTH Vanny, Inbound and outbound tourism statistics
Mr. SENG Sithikun, Survey and domestic tourism statistics
Mr. LENG Daravuth, Survey and data collector
Mr. CHHANN Dimang, Editor and data collector
Ms. THOEUN Kunthea, Survey and data entries
Mr. OEUN Channthan, Survey and data entries
Mr. RAY Bora, Text editor
Mr. LENG Thearithratna, Survey and data entries
Mr. HEM Polin, Survey and data entries

Front Page: A picture of Gupura III Gate, Preah Vihear Temple. Special thanks to Mr. Suong Mardy, Deputy of Rewards and Incentive Department of Ministry of Environment for his consultation and giving this picture.





CAMBODIA

Kingdom of Wonder

feel the warmth

Clean City, Clean Resort, Good Service, Best Hospitality